



DIGITAL LOG (785) 625-3858

Microresistivity Log

API No.	15-039-21,114-00-00		
Company	Murfin Drilling Company, Inc.		
Well	Krizek No. 1-28		
Field	Wildcat		
County	Decatur	State	Kansas
Location	1680' FSL & 1280' FEL		
Sec: 28	Twp: 3 S	Rge: 27 W	Elevation 2617
Permanent Datum	Ground Level	Log Measured From	Kelly Bushing
Drilling Measured From	Kelly Bushing	5	Ft. Above Perm. Datum
			Other Services CNL/CDL DIL/BHCS
			Elevation K.B. 2622 D.F. 2617 G.L. 2617

Date	3/30/2010
Run Number	Two
Depth Driller	3830
Depth Logger	3834
Bottom Logged Interval	3833
Top Log Interval	3200
Casing Driller	8.625 @ 218
Casing Logger	218
Bit Size	7.875
Type Fluid in Hole	Chemical
Salinity, ppm CL	3.700
Density / Viscosity	9.3 57
pH / Fluid Loss	10.5 6.8
Source of Sample	Flowline
Rm @ Meas. Temp	.85 @ 60
Rmf @ Meas. Temp	.64 @ 60
Rmc @ Meas. Temp	.15 @ 60
Source of Rmf / Rmc	Charts
Rm @ BHT	.44 @ 116
Operating Rig Time	4 Hours
Max Rec. Temp. F	116
Equipment Number	4
Location	Hays
Recorded By	K. Bange
Witnessed By	Brad Rine

<<< Fold Here >>>

All interpretations are opinions based on inferences from electrical or other measurements and we cannot and do not guarantee the accuracy or correctness of any interpretation, and we shall not, except in the case of gross or willful negligence on our part, be liable or responsible for any loss, costs, damages, or expenses incurred or sustained by anyone resulting from any interpretation made by any of our officers, agents or employees. These interpretations are also subject to our general terms and conditions set out in our current Price Schedule.

Comments

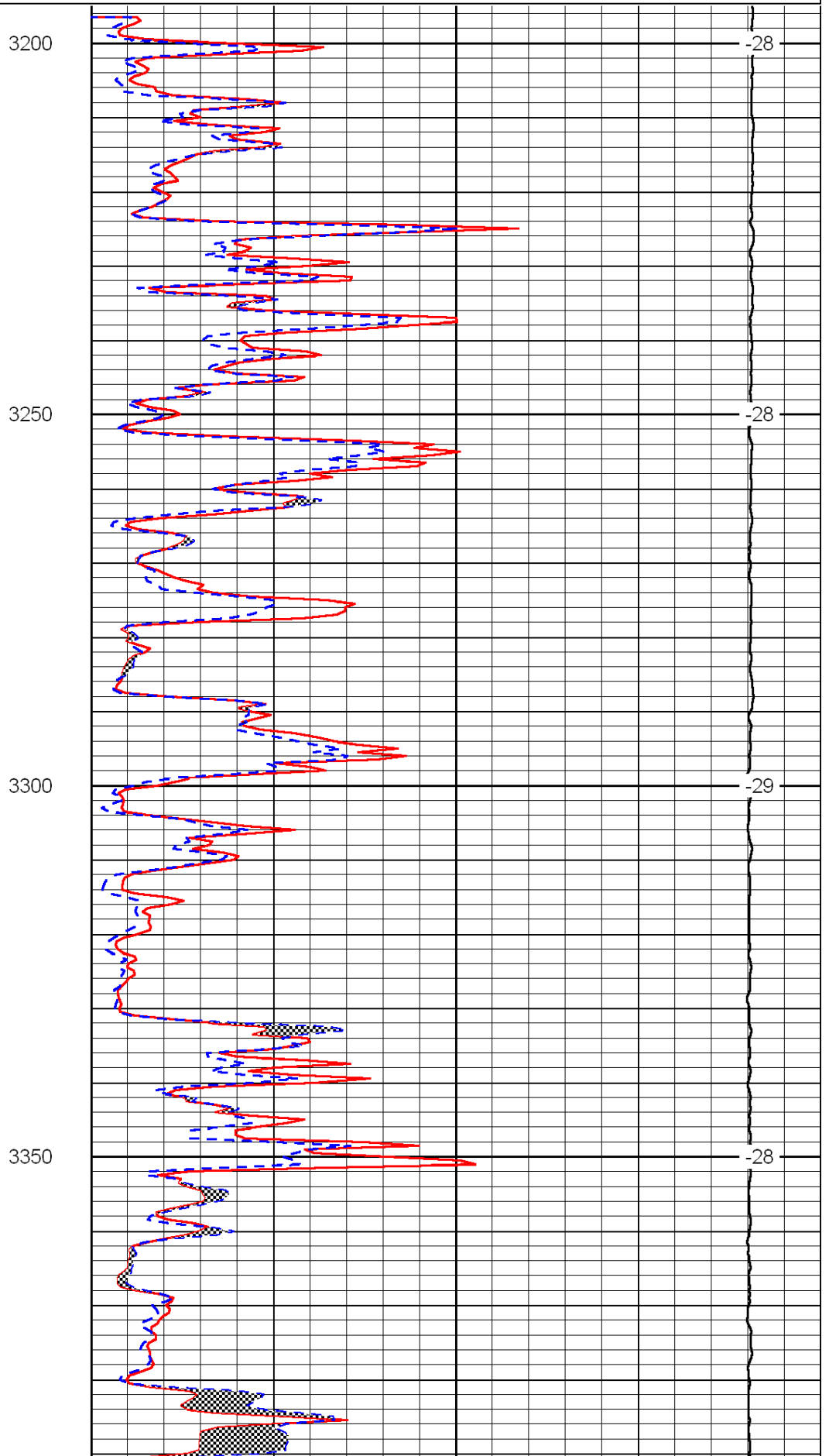
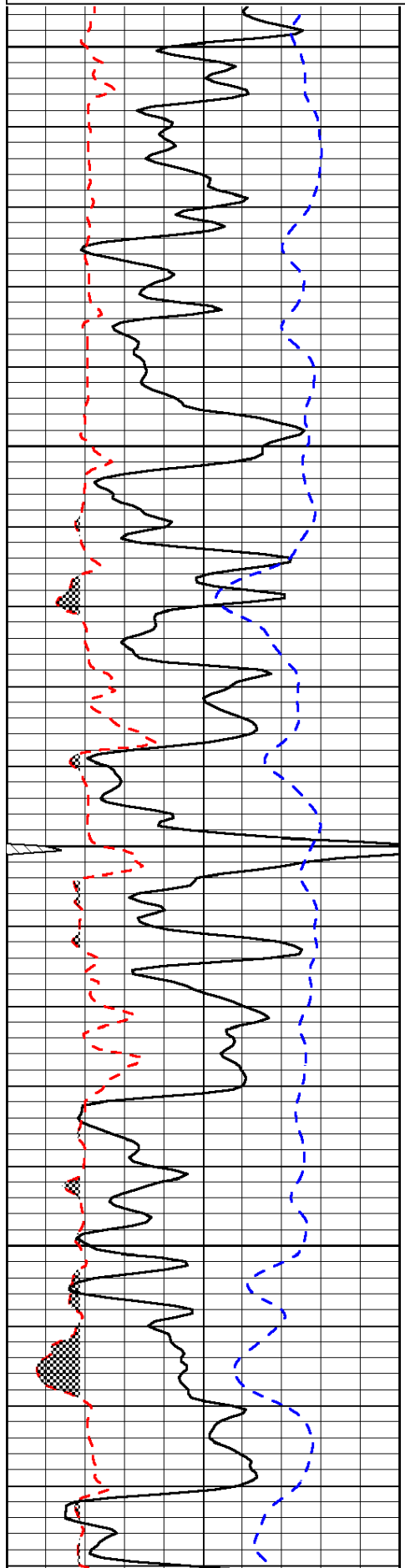
Thank you for using Log-Tech, Inc.
 (785) 625-3858
 Norcatur, 10 W to Kanona rd, 5 S to stop sign,
 2 E, 1/2 N, W into

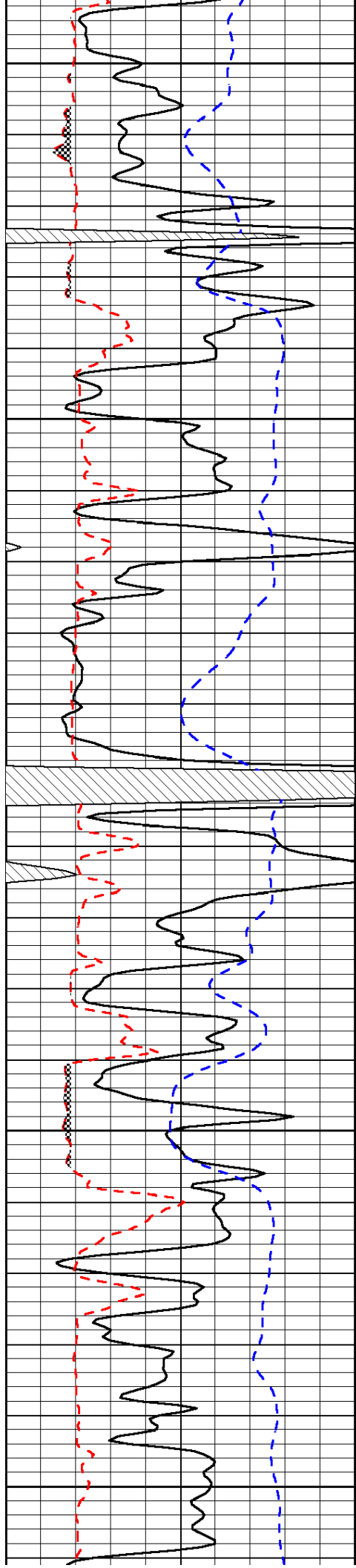
Database File: c:\warrior\data\murfin_krizek no. 1-28\murfhd.db
 Dataset Pathname: dil/murf2in
 Presentation Format: micro
 Dataset Creation: Tue Mar 30 11:45:38 2010
 Charted by: Depth in Feet scaled 1:240

0	Gamma Ray	150
6	Micro Log Caliper (GAPI)	16
-200	SP (mV)	0

0	Micro Inverse 1 X 1	40
0	Micro Normal 2"	40
15000	Line Weight	0

LSPD





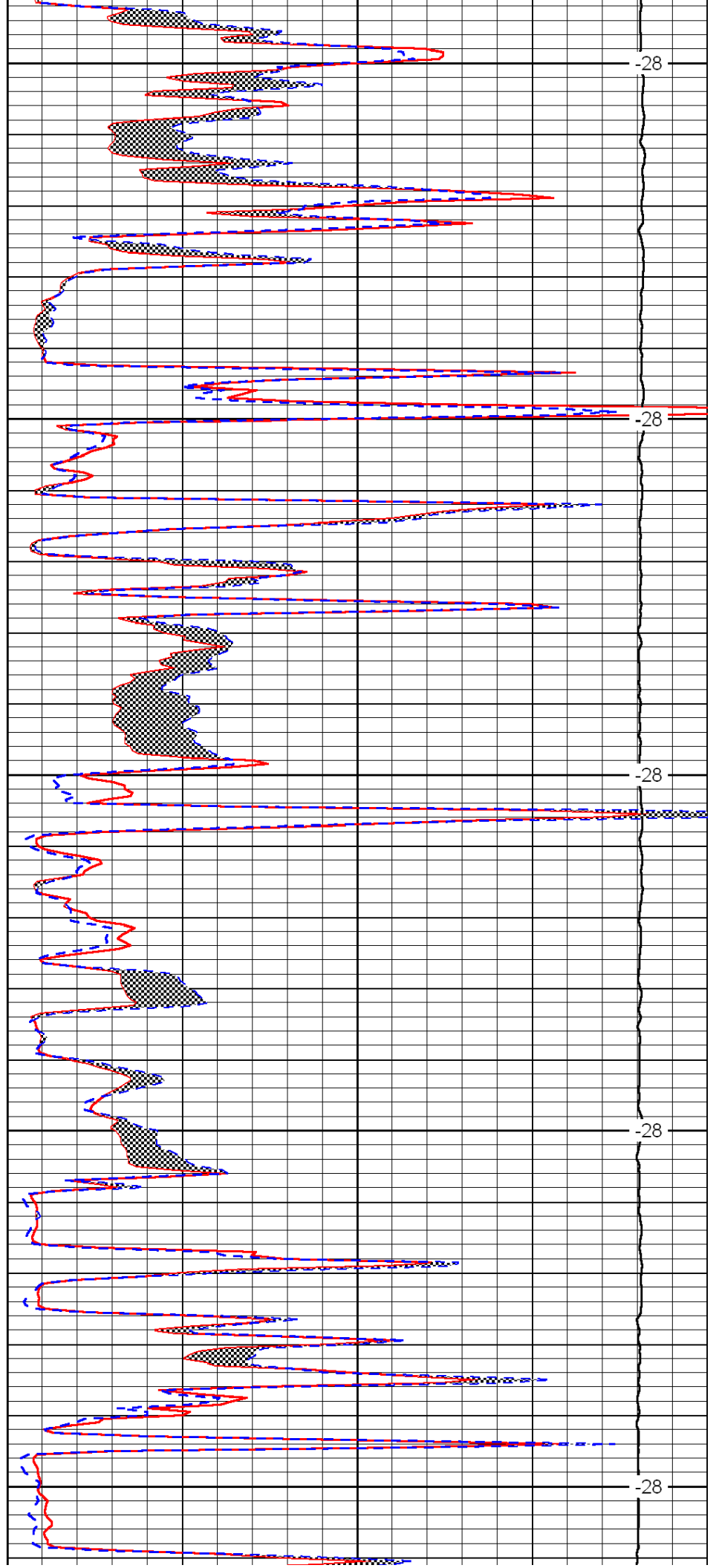
3400

3450

3500

3550

3600



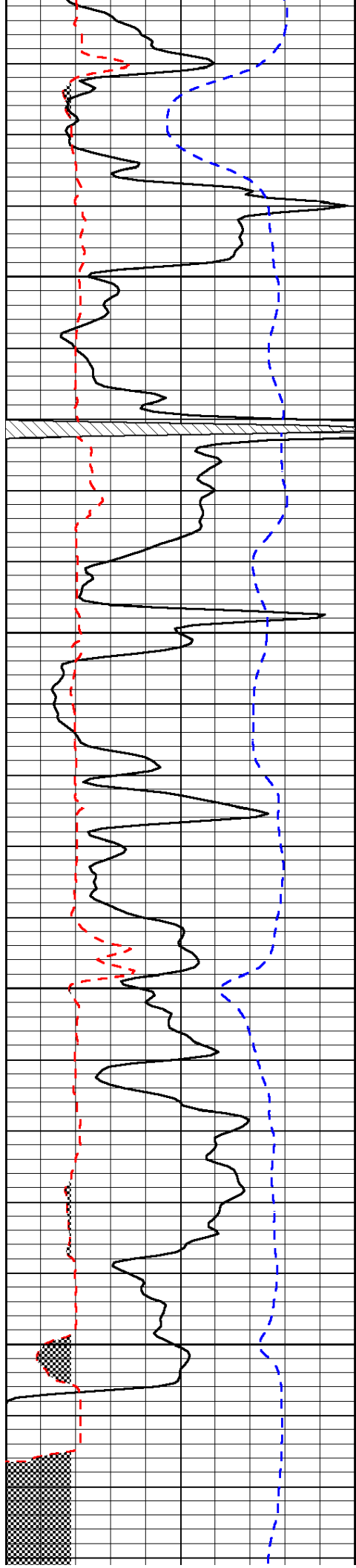
-28

-28

-28

-28

-28

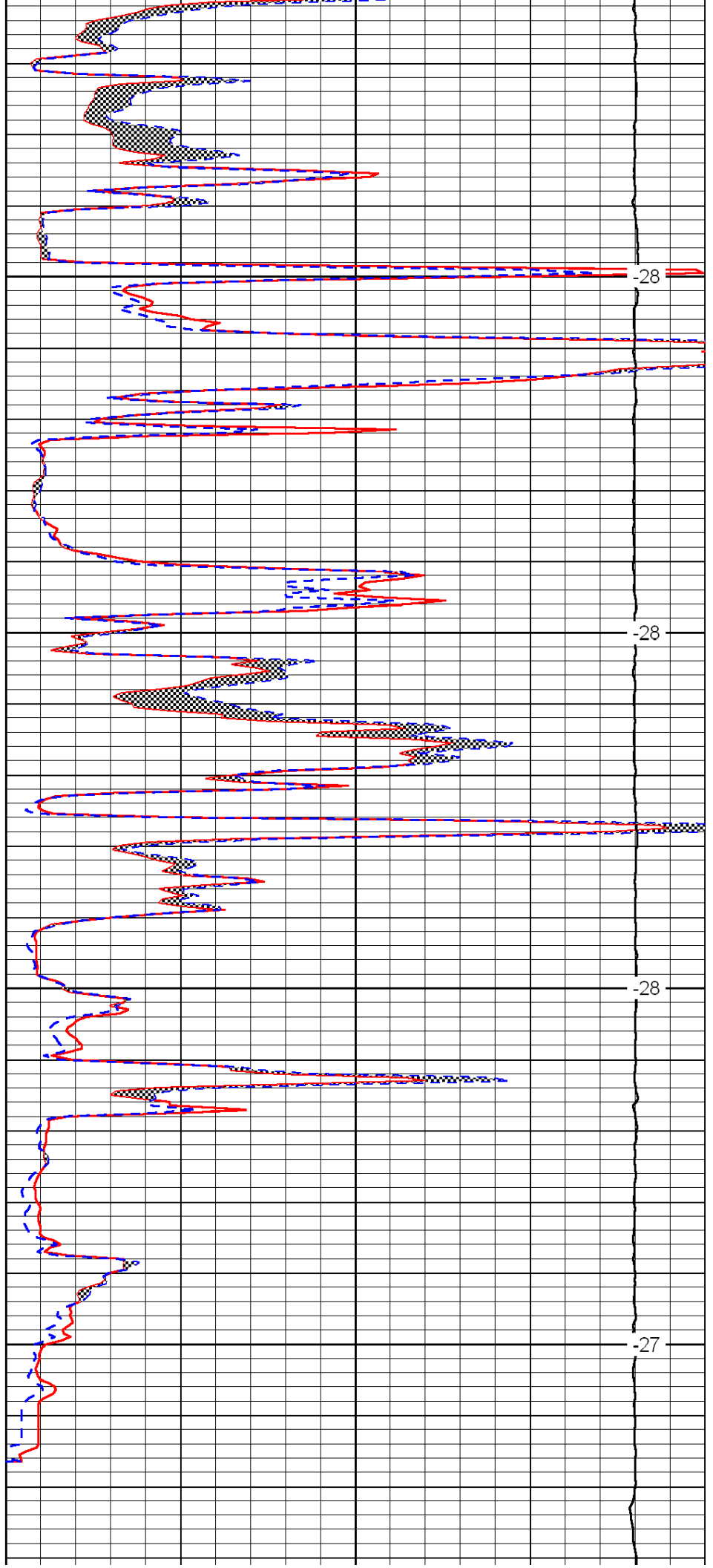


3650

3700

3750

3800

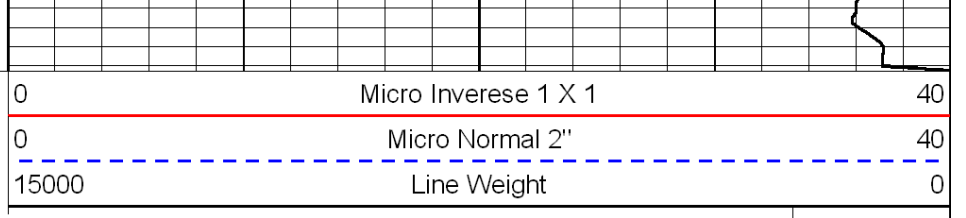
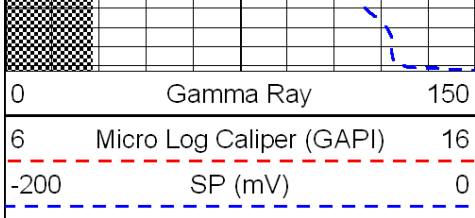


-28

-28

-28

-27



LSPD