



Dual Compensated Porosity Log

DIGITAL LOG (785) 625-3858

API No.	15-039-21,114-00-00		
Company	Murfin Drilling Company, Inc.		
Well	Krizek No. 1-28		
Field	Wildcat		
County	Decatur		
Location	1680' FSL & 1280' FEL		
State	Kansas		
Other Services	DIL MEI/BHCS		
Sec: 28	Twp: 3 S	Rge: 27 W	
Permanent Datum	Ground Level	Elevation 2617	
Log Measured From	Kelly Bushing	5 Ft. Above Perm. Datum	
Drilling Measured From	Kelly Bushing		
Date	3/30/2010		
Run Number	One		
Type Log	CNL / CDL		
Depth Driller	3830		
Depth Logger	3834		
Bottom Logged Interval	3833		
Top Logged Interval	3200		
Type Fluid In Hole	Chemical		
Salinity, PPM CL	3,700		
Density	9.3		
Level	Full		
Max. Rec. Temp. F	116		
Operating Rig Time	4 Hours		
Equipment -- Location	4 Hays		
Recorded By	K. Bange		
Witnessed By	Brad Rine		

Borehole Record				Casing Record			
Run No.	Bit	From	To	Size	Wgt.	From	To
1	12.25	00	218	8.625	24#	00	218
2	7.875	218	3830				

<<< Fold Here >>>

All interpretations are opinions based on inferences from electrical or other measurements and we cannot and do not guarantee the accuracy or correctness of any interpretation, and we shall not, except in the case of gross or willful negligence on our part, be liable or responsible for any loss, costs, damages, or expenses incurred or sustained by anyone resulting from any interpretation made by any of our officers, agents or employees. These interpretations are also subject to our general terms and conditions set out in our current Price Schedule.

Comments

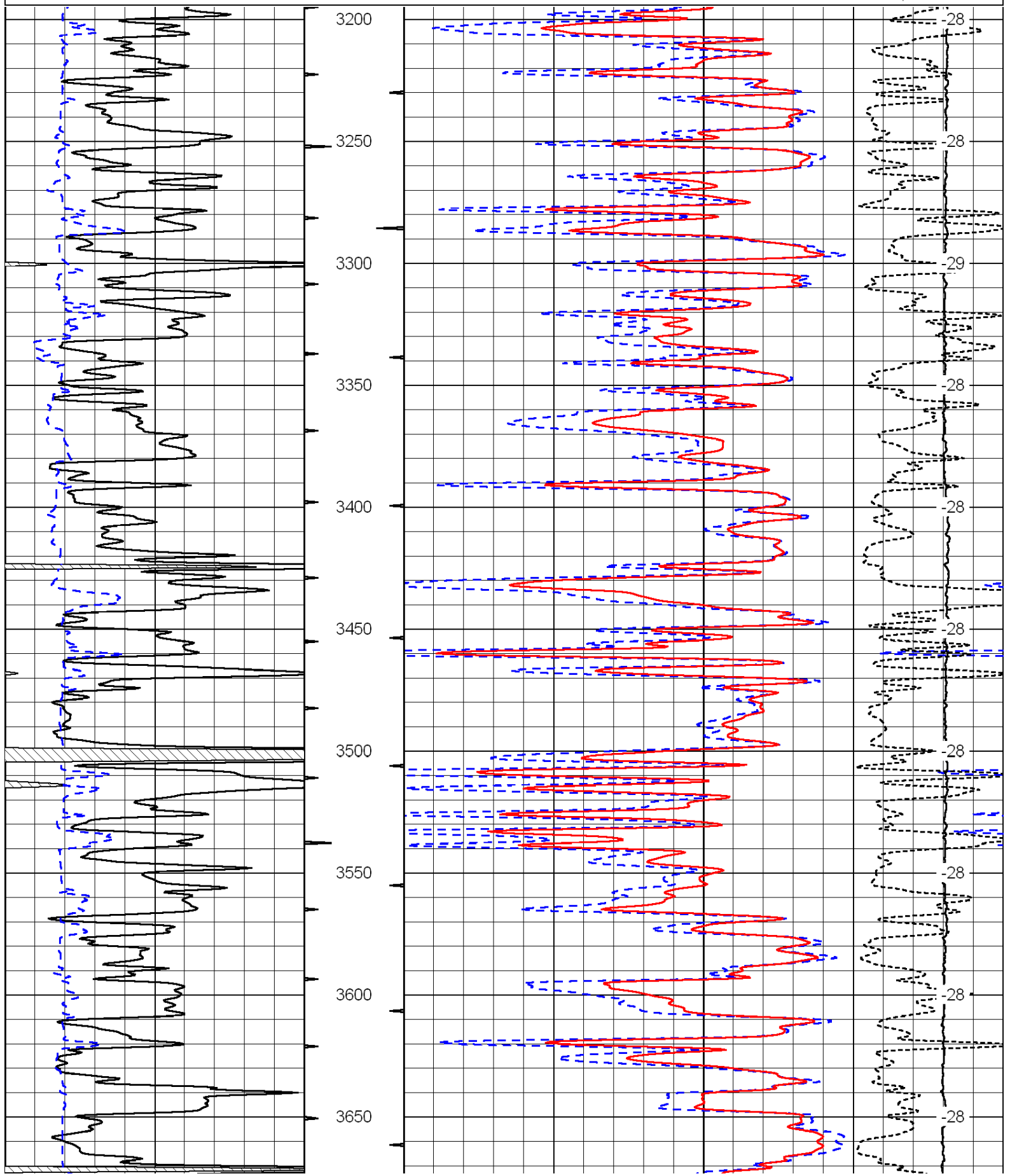
Thank you for using Log-Tech, Inc.
 (785) 625-3858

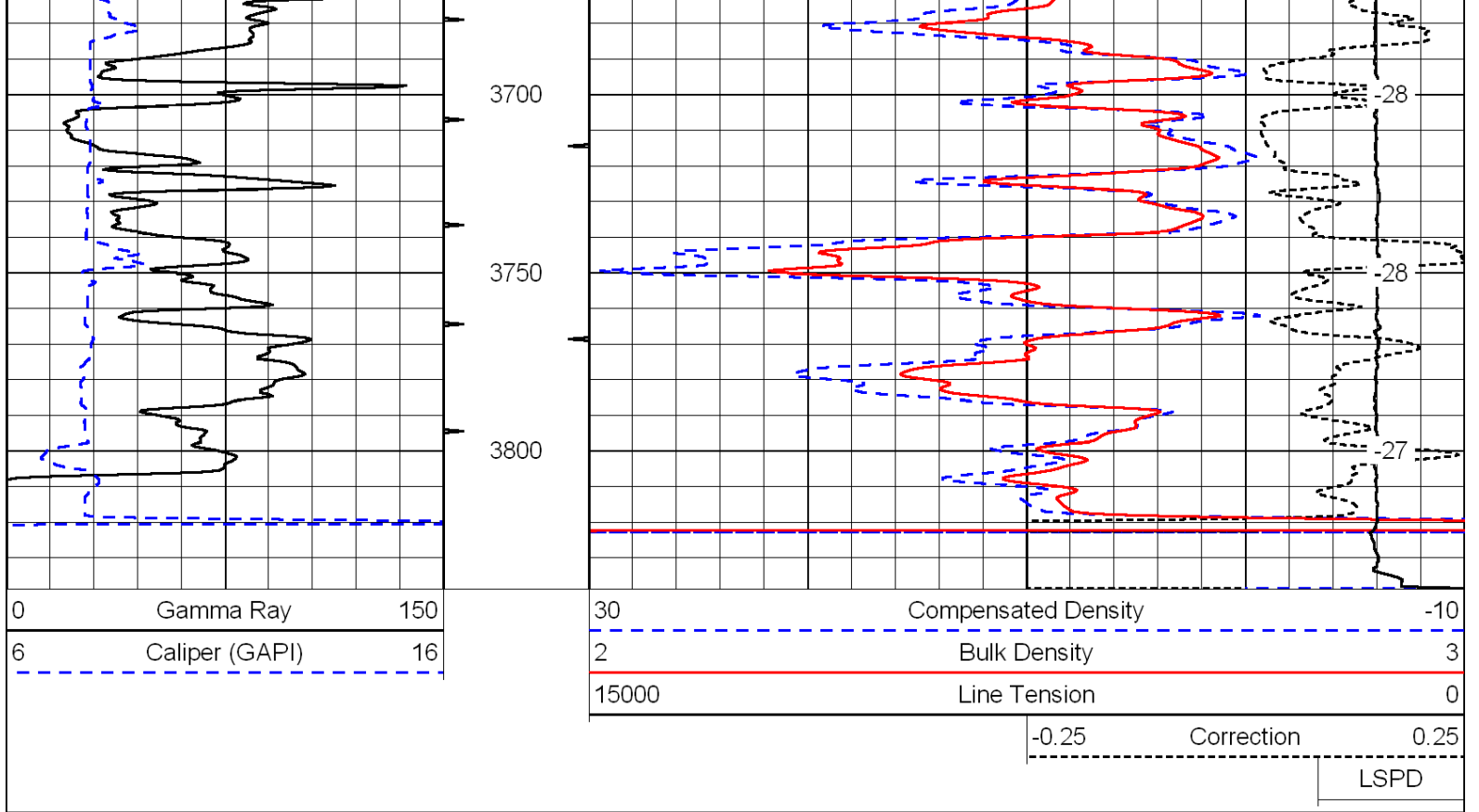
 Norcatur, 10 W to Kanona rd, 5 S to stop sign,
 2 E, 1/2 N, W into

Database File: c:\warrior\data\murfin_krizek no. 1-28\murfhd.db
 Dataset Pathname: dil\murf2in
 Presentation Format: cdl
 Dataset Creation: Tue Mar 30 11:45:38 2010
 Charted by: Depth in Feet scaled 1:600

0	Gamma Ray	150
6	Caliper (GAPI)	16

30	Compensated Density	-10
2	Bulk Density	3
15000	Line Tension	0
-0.25	Correction	0.25
LSPD		





Database File: c:\warrior\data\murfin_krizek no. 1-28\murfhd.db
 Dataset Pathname: dil/murf2in
 Presentation Format: cndlspec
 Dataset Creation: Tue Mar 30 11:45:38 2010
 Charted by: Depth in Feet scaled 1:240

