



Dual Induction Log

DIGITAL LOG (785) 625-3858

API No.	15-197-20,284-00-00	
Company	Blake Production Company, Inc.	
Well	Miller No.1	
Field	Davis Ranch	
County	Wabaunsee State	Kansas
Location	SW SW SW 330' FSL & 330' FWL	
Sec: 34	Twp: 13S	Rge: 10E
Permanent Datum	Ground Level	Elevation 1391
Log Measured From	Kelly Bushing	10 Ft. Above Perm. Datum
Drilling Measured From	Froth Kelly Bushing	
		Other Services CNL/CDL
		Elevation K.B. 1401 D.F. 1391 G.L. 1391

Date	1/24/2010	
Run Number	One	
Depth Driller	3315	
Depth Logger	3315	
Bottom Logged Interval	3314	
Top Log Interval	300	
Casing Driller	10.75 @ 309	
Casing Logger	306	
Bit Size	9.5	
Type Fluid in Hole	Chemical	
Salinity, ppm CL	19,000	
Density / Viscosity	8.6	43
pH / Fluid Loss	8.0	8
Source of Sample	Flowline	
Rm @ Meas. Temp	.23 @	58
Rmf @ Meas. Temp	.17 @	58
Rmc @ Meas. Temp	.31 @	58
Source of Rmf / Rmc	Charts	
Rm @ BHT	.12 @	111
Operating Rig Time	2 1/2 Hours	
Max Rec. Temp. F	111	
Equipment Number	17	
Location	Hays	
Recorded By	C. Desaire	
Witnessed By	Justin Craig	

<<< Fold Here >>>

All interpretations are opinions based on inferences from electrical or other measurements and we cannot and do not guarantee the accuracy or correctness of any interpretation, and we shall not, except in the case of gross or willful negligence on our part, be liable or responsible for any loss, costs, damages, or expenses incurred or sustained by anyone resulting from any interpretation made by any of our officers, agents or employees. These interpretations are also subject to our general terms and conditions set out in our current Price Schedule.

Comments

Thank you for using Log-Tech, Inc.
(785) 625-3858

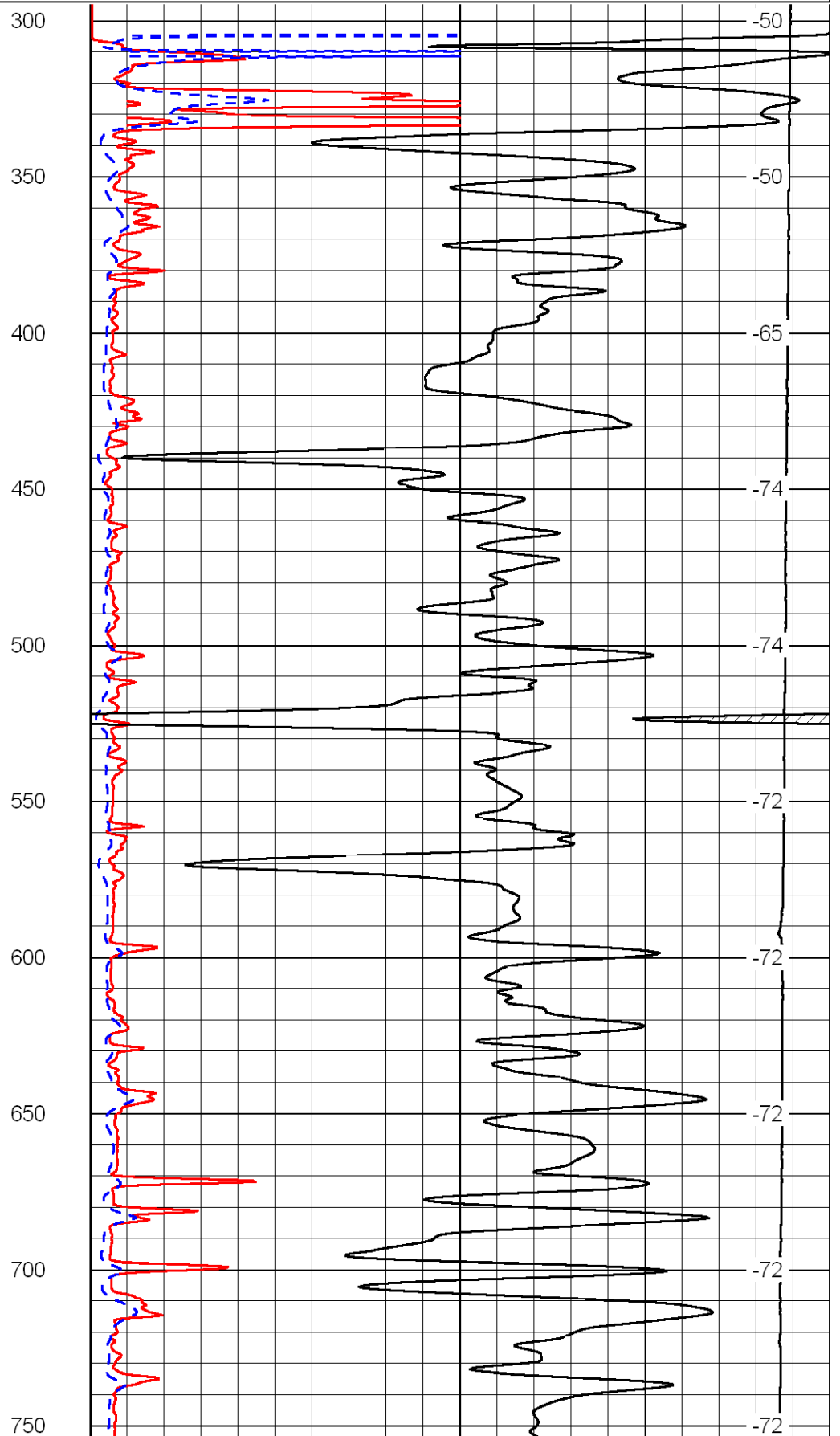
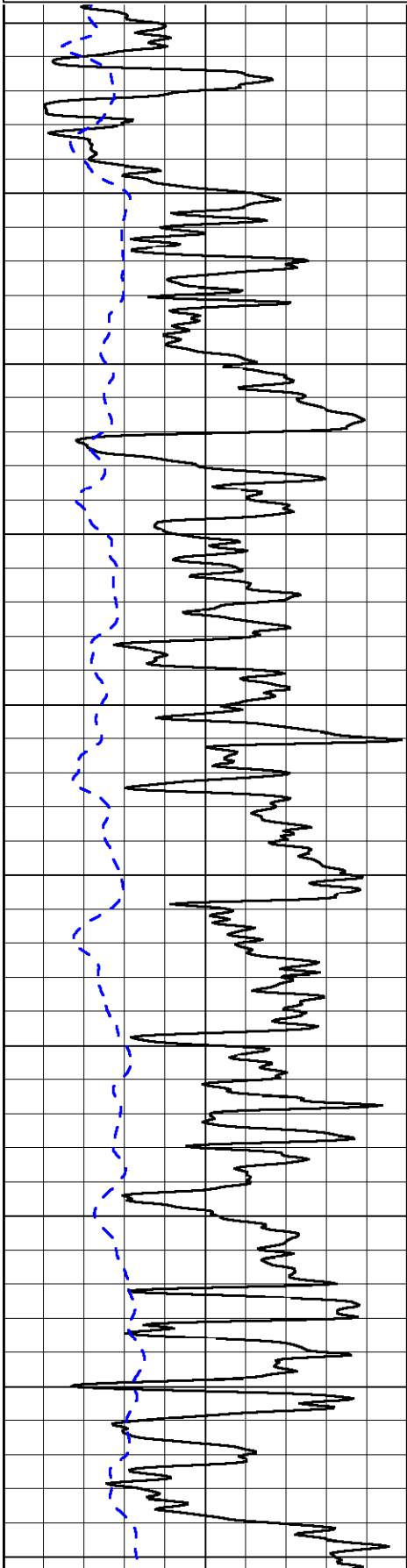
Alma, 14 S on Hwy 4, W Into

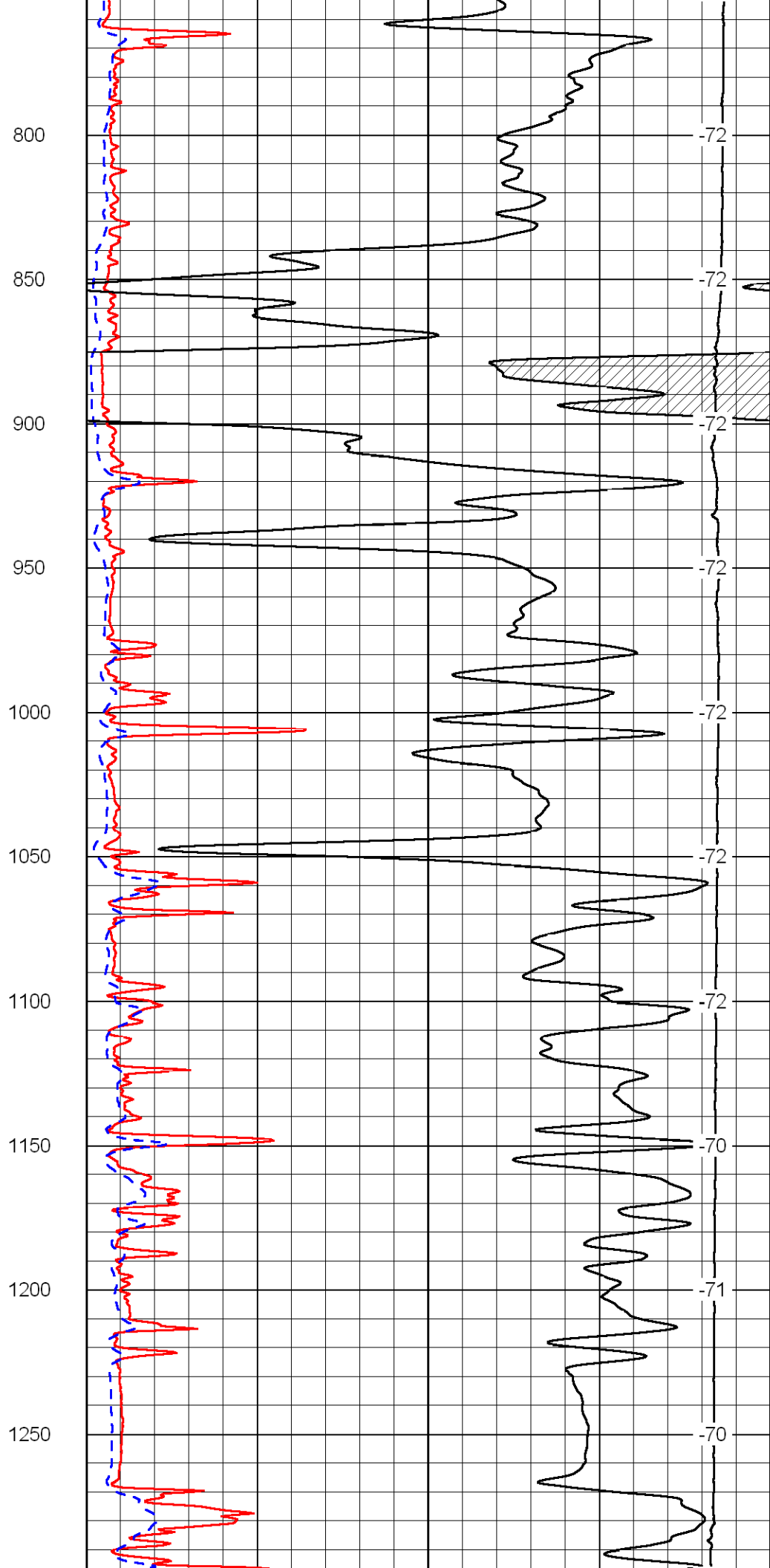
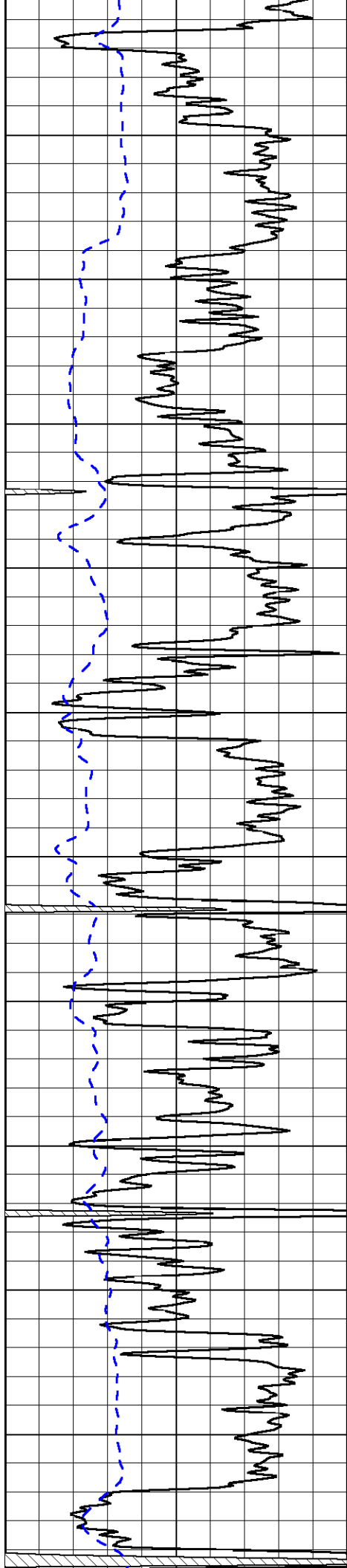
Database File: c:\warrior\data\blake production_miller no.1\blakehd.db
 Dataset Pathname: dil/blakestk6
 Presentation Format: dil2in
 Dataset Creation: Sun Jan 24 09:46:22 2010
 Charted by: Depth in Feet scaled 1:600

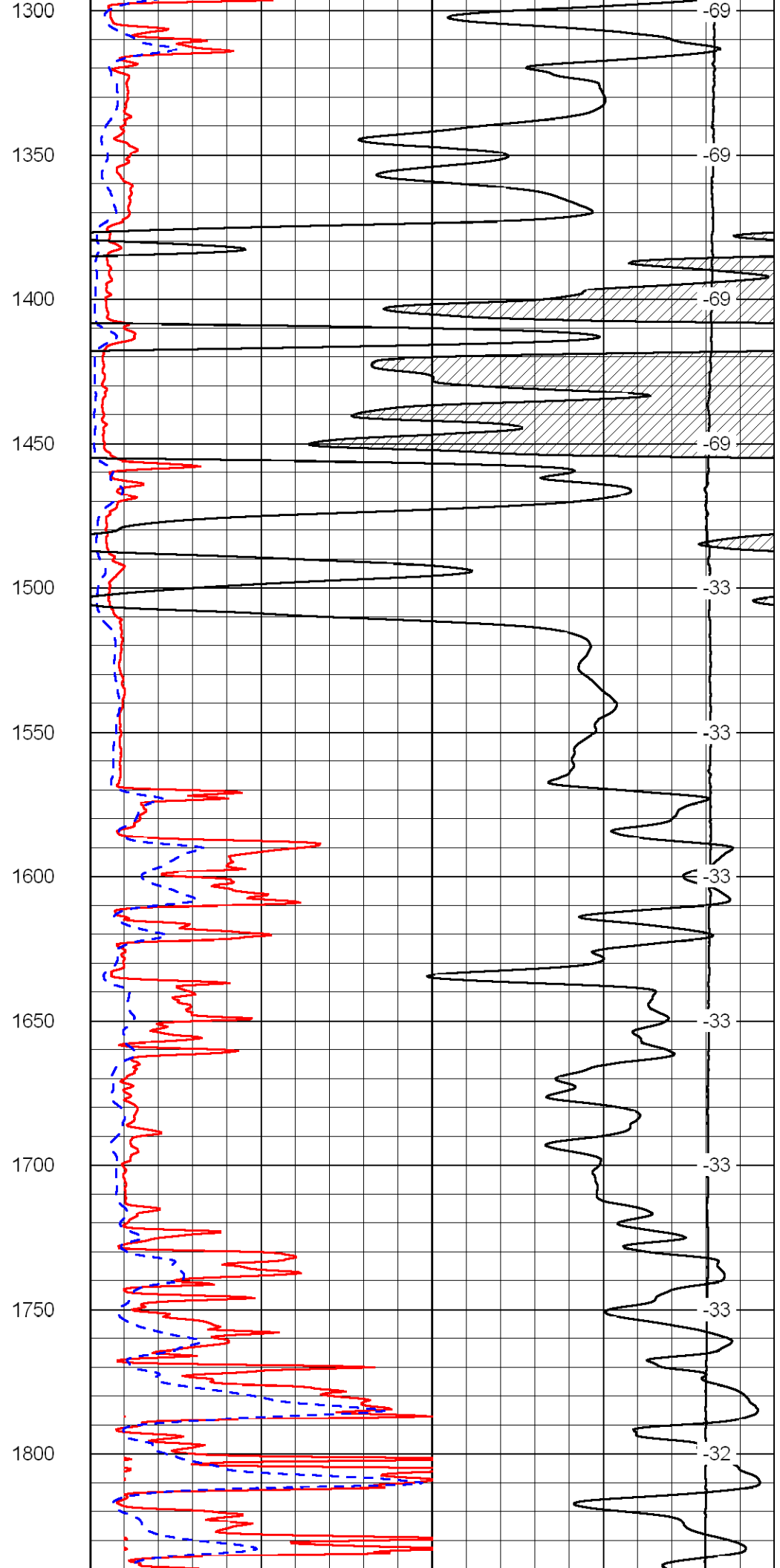
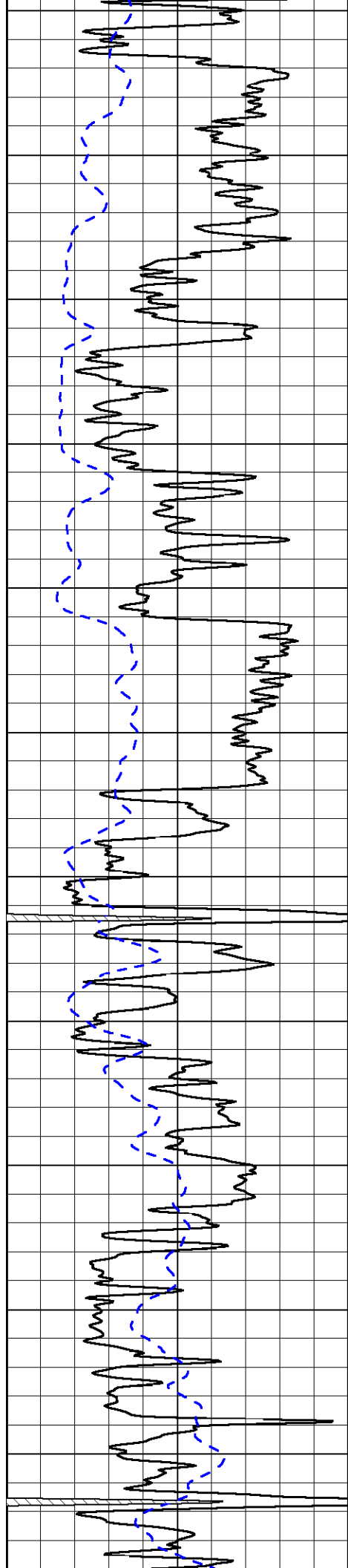
0 Gamma Ray 150
-200 SP (MV) 0

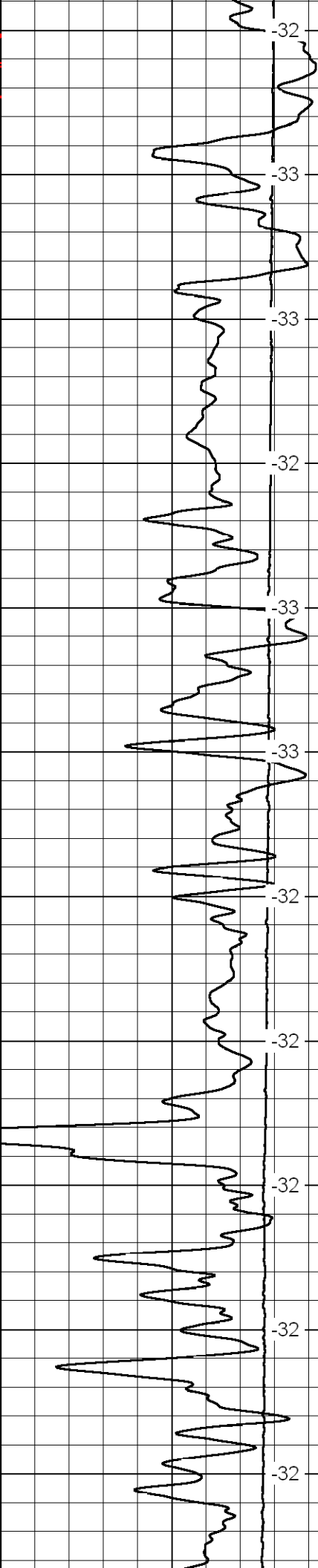
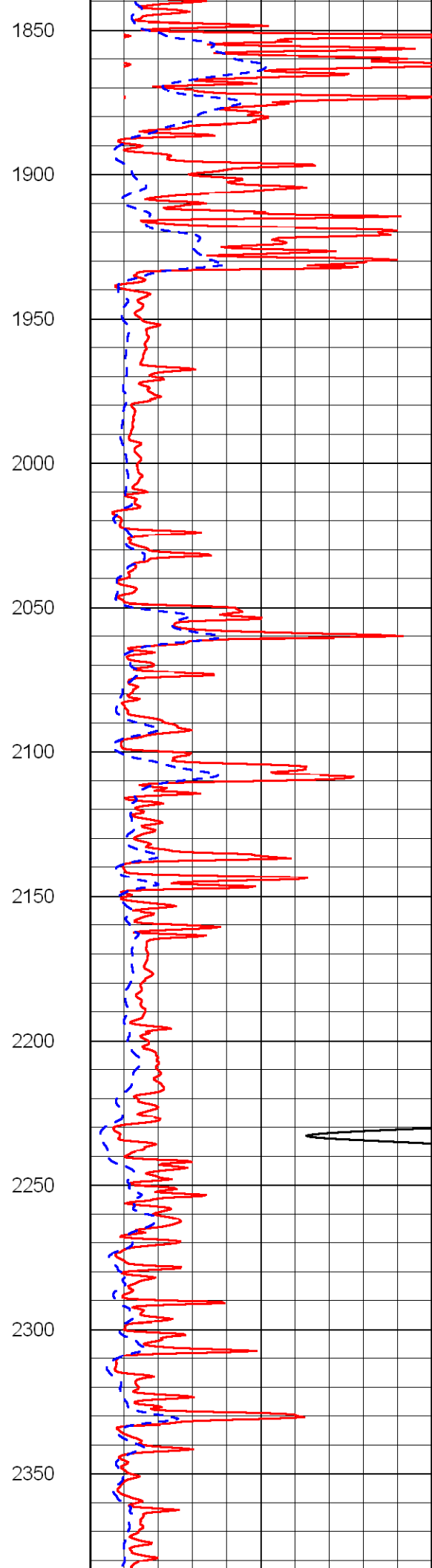
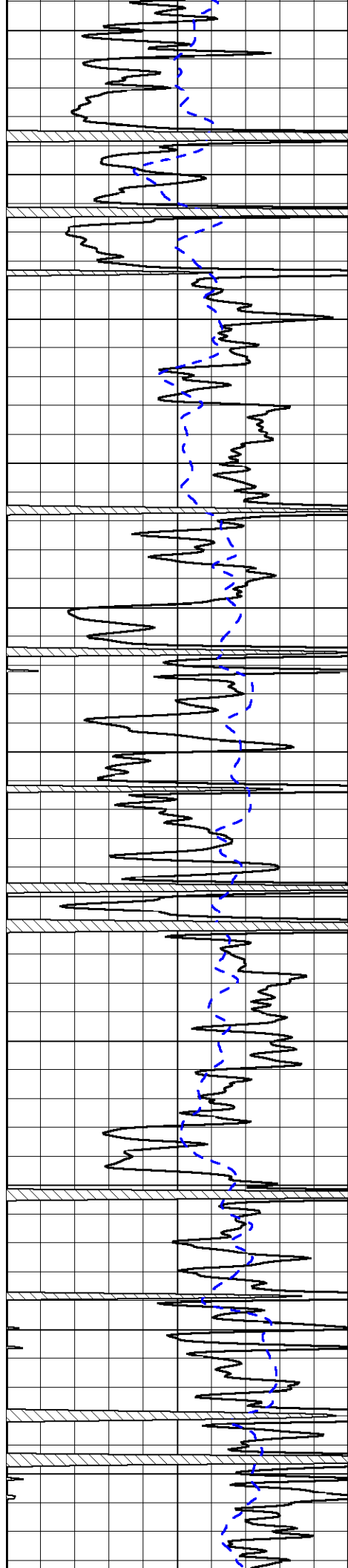
0 Shallow Resistivity (Ohm-m) 50
0 Deep Resistivity (Ohm-m) 50
1000 Conductivity (mmho/m) 0
15000 Line Tension (lb) 0
50 Shallow Resistivity (Ohm-m) 500
50 Deep Resistivity (Ohm-m) 500

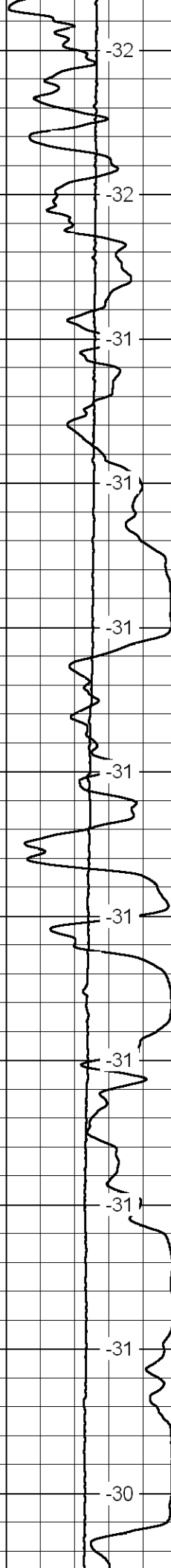
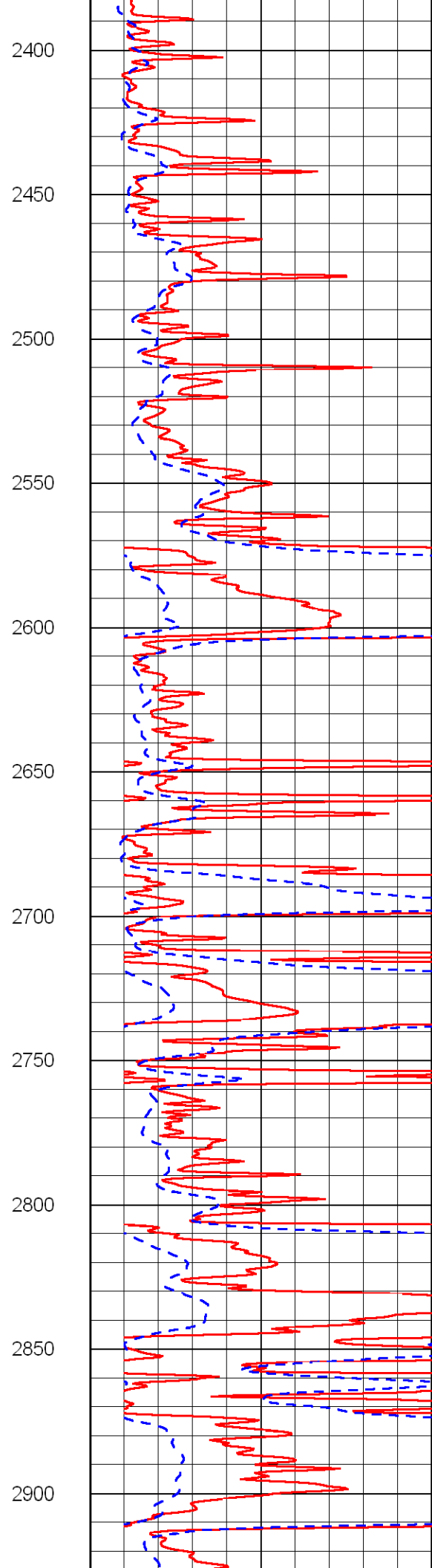
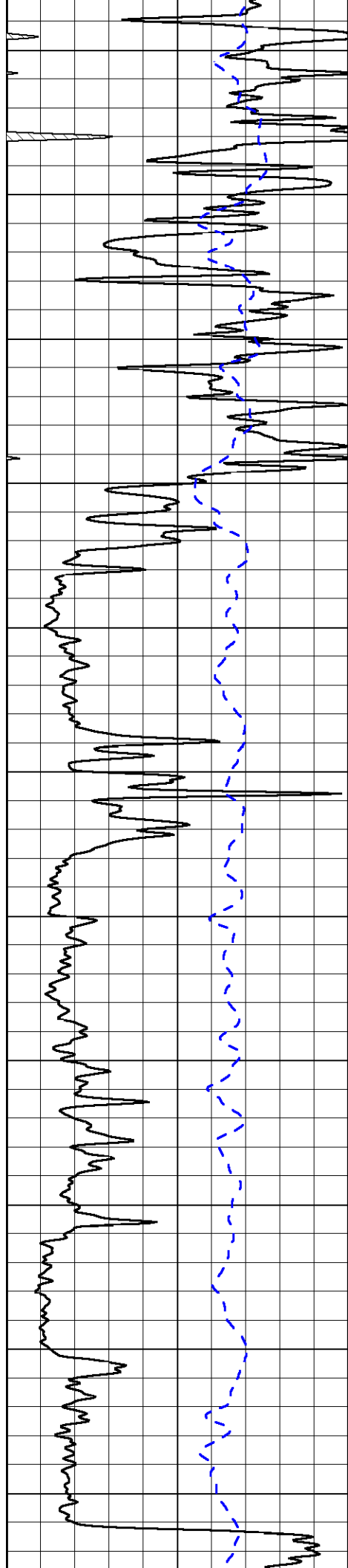
LSPD
(ft/min)

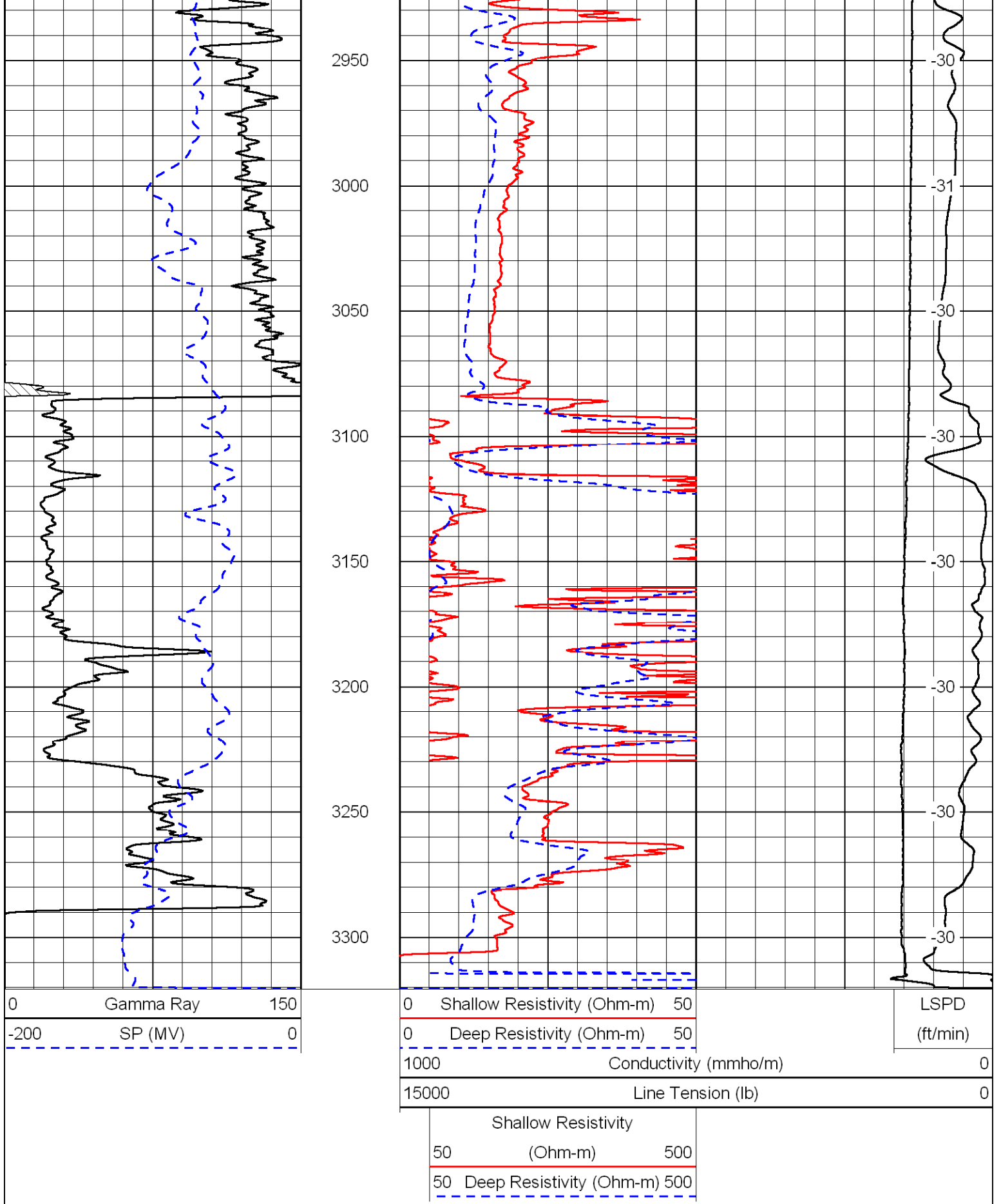










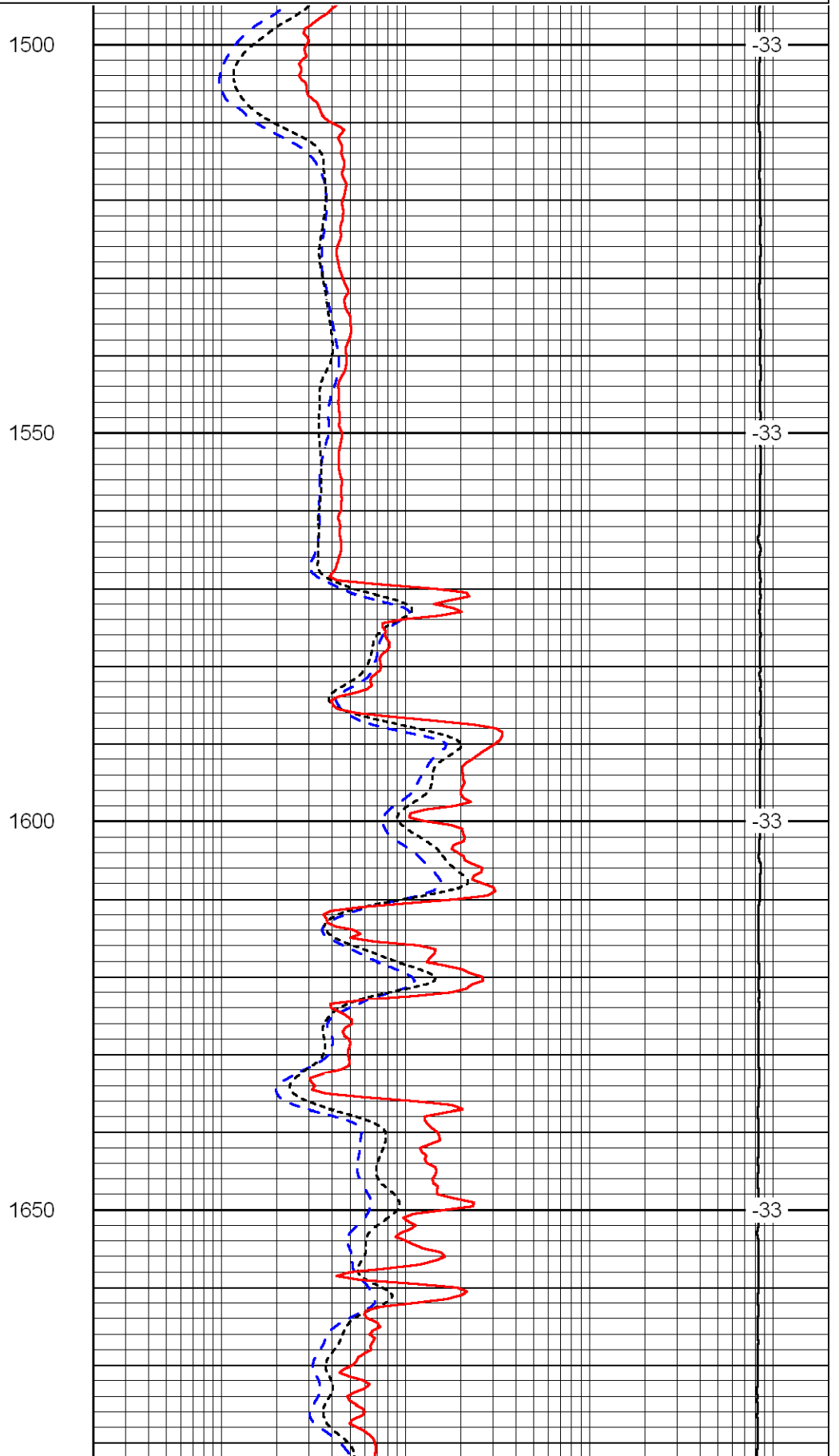
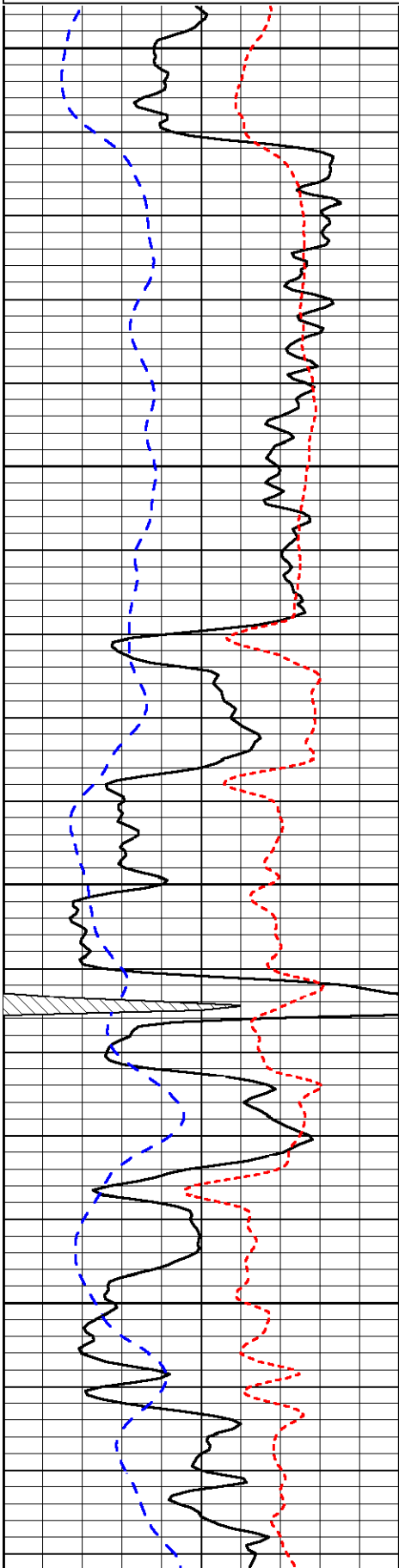


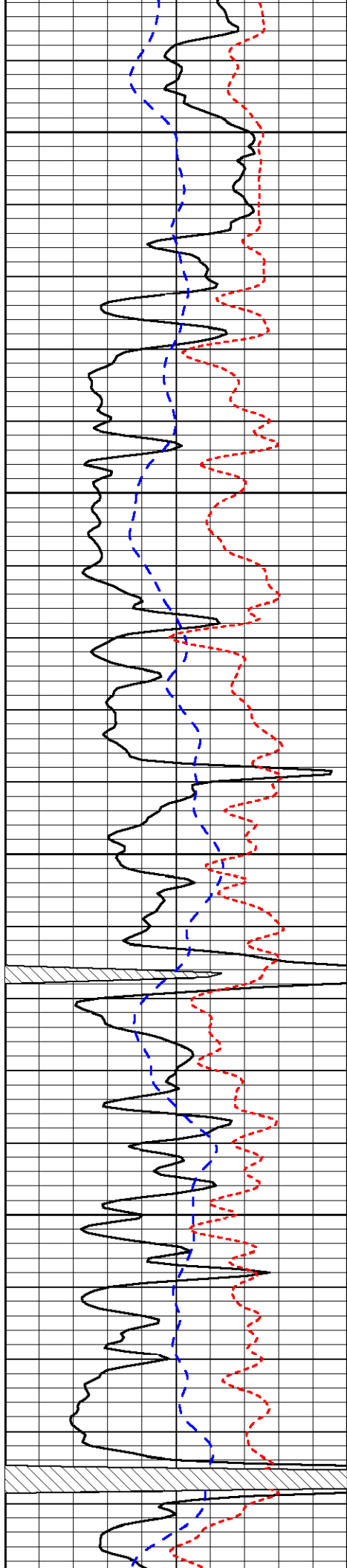
Database File: c:\warrior\data\blake production_miller no.1\blakehd.db
 Dataset Pathname: dil/blakestk6
 Presentation Format: dil
 Dataset Creation: Sun Jan 24 09:46:22 2010
 Charted by: Depth in Feet scaled 1:240

0	Gamma Ray	150
-200	SP (MV)	0
-160	Rxo / Rt	40

0.2	Deep Resistivity (Ohm-m)	2000
0.2	Medium Resistivity (Ohm-m)	2000
0.2	Shallow Resistivity (Ohm-m)	2000
15000	Line Tension (lb)	0

LSPD
(ft/min)



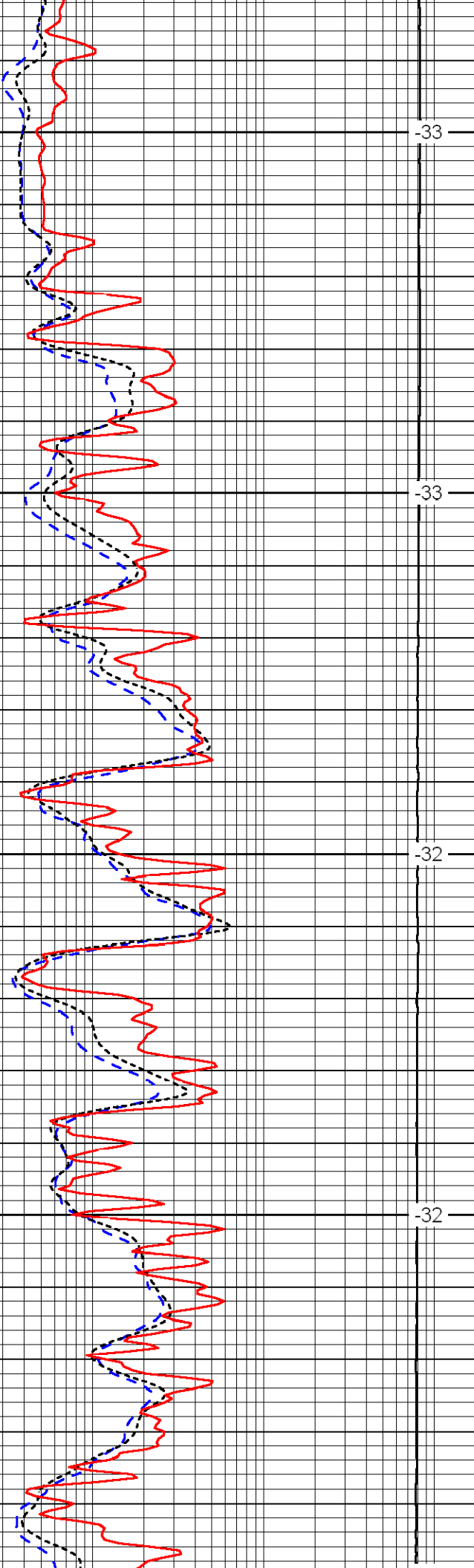


1700

1750

1800

1850

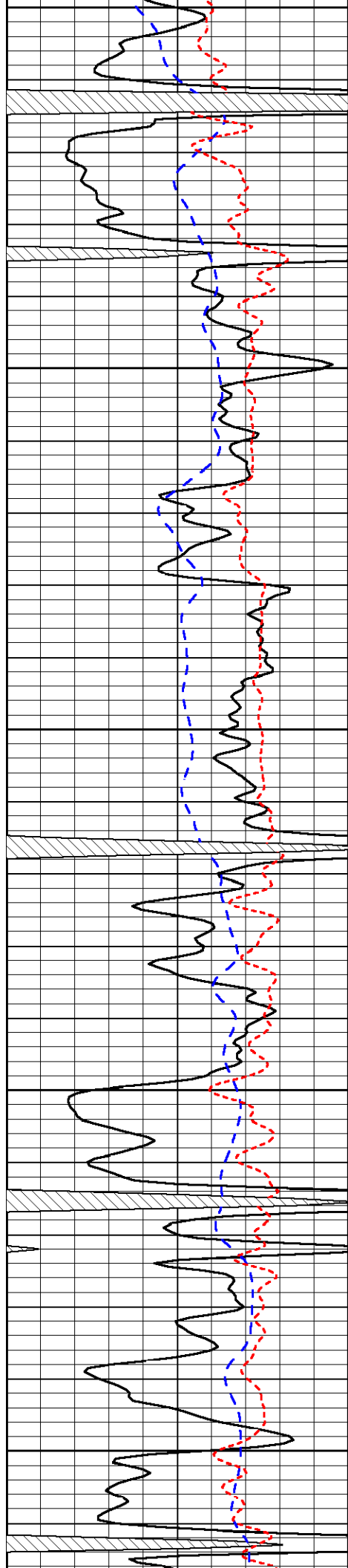


-33

-33

-32

-32



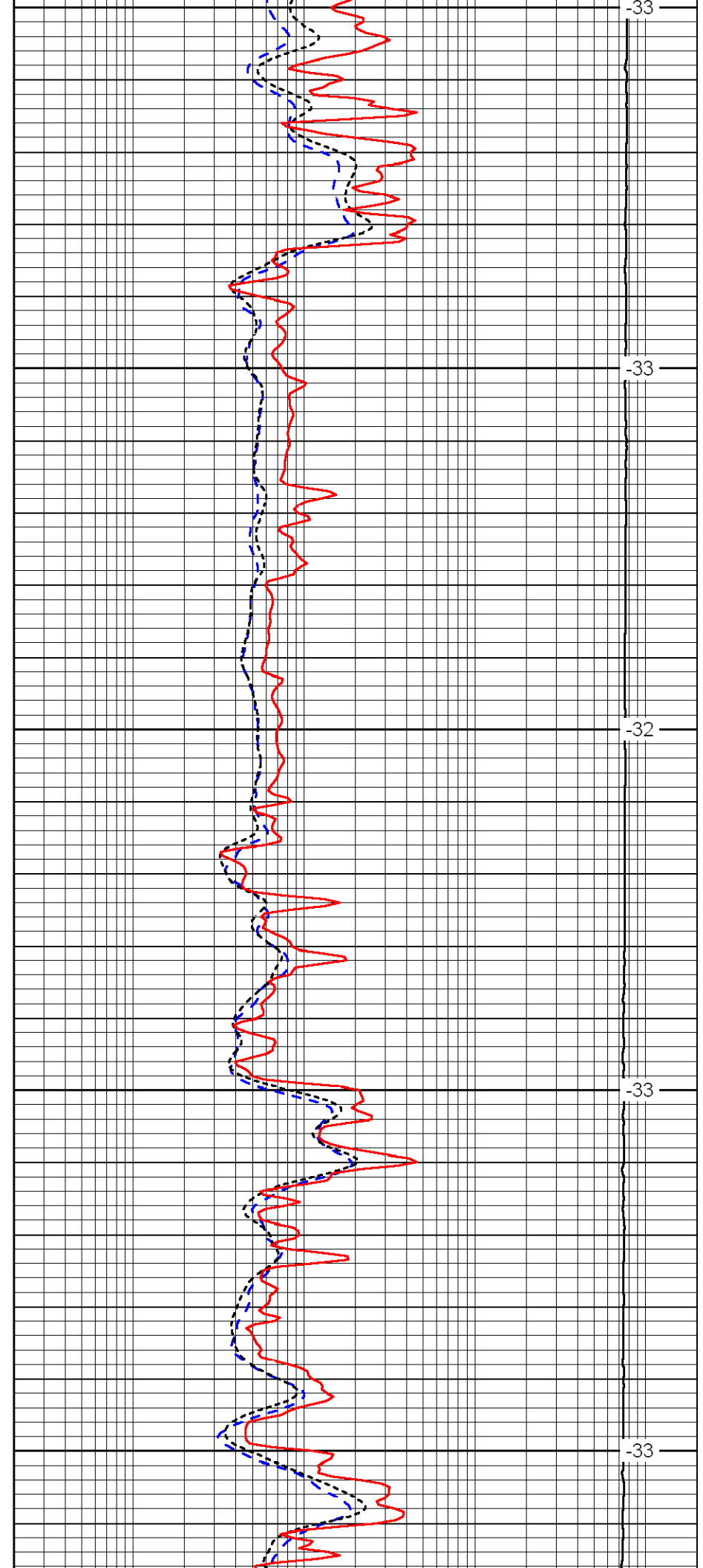
1900

1950

2000

2050

2100



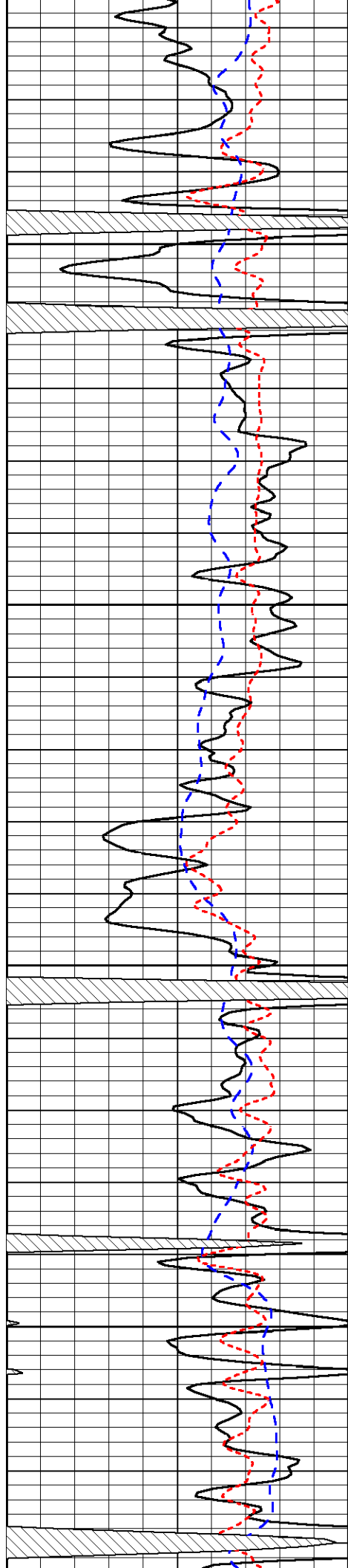
-33

-33

-32

-33

-33

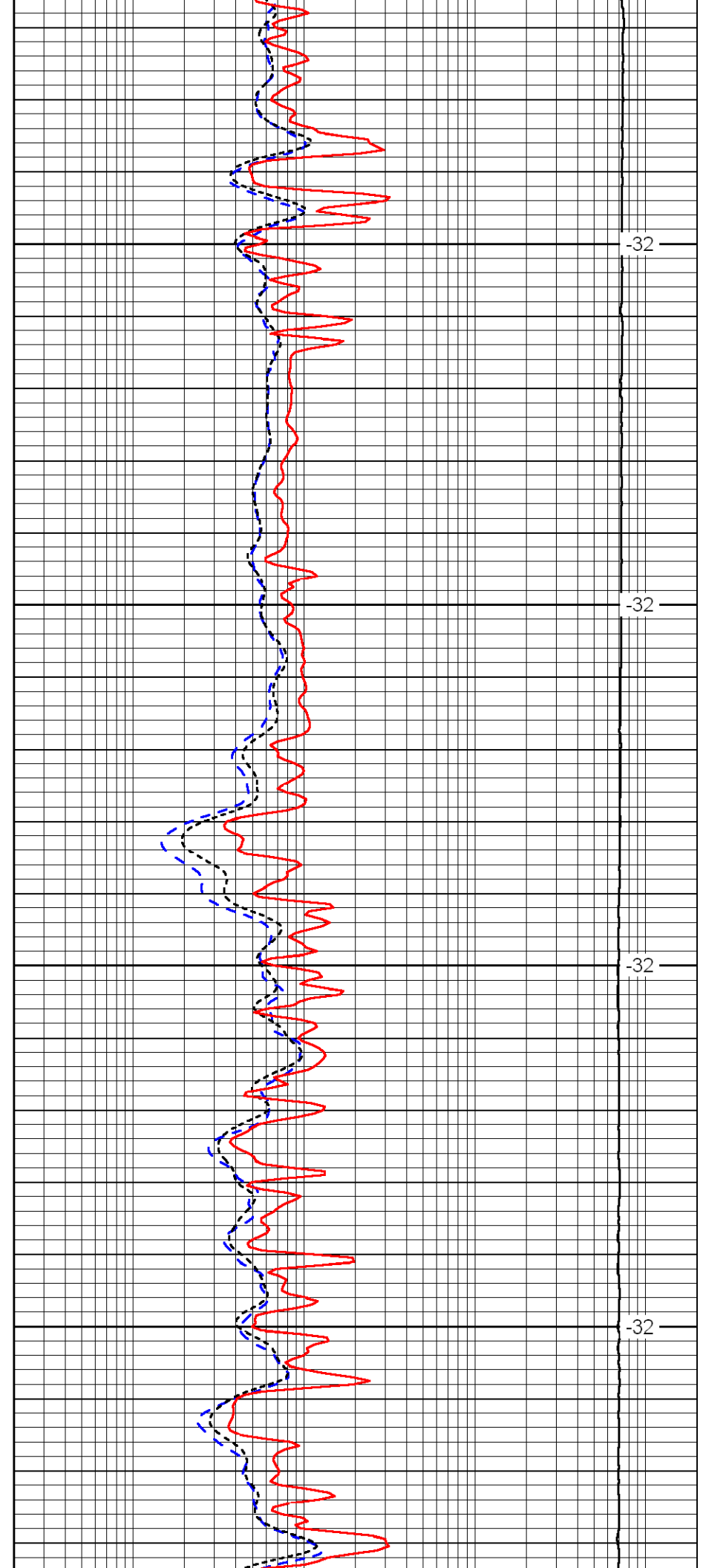


2150

2200

2250

2300

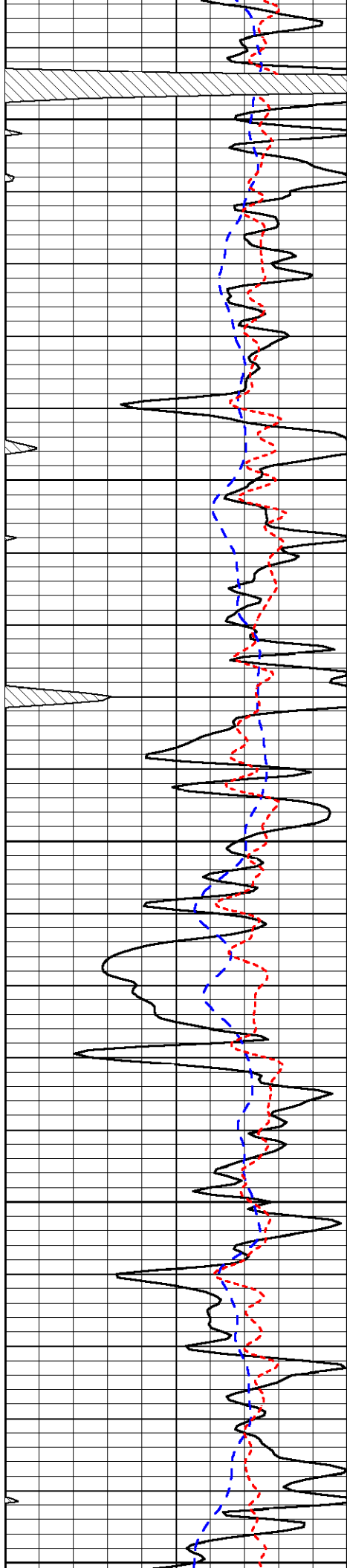


32

32

32

32



2350

2400

2450

2500

2550

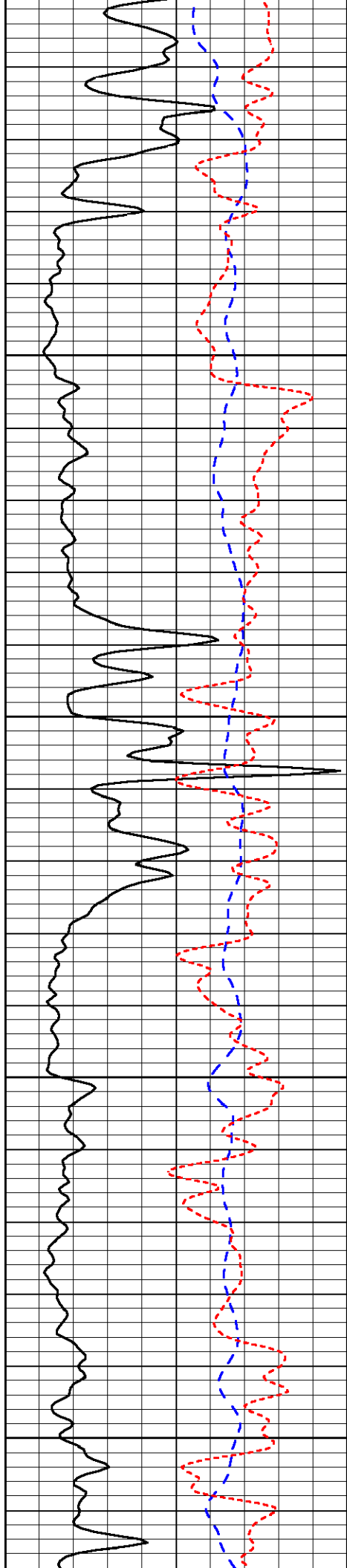
-32

-32

-32

-31

-31

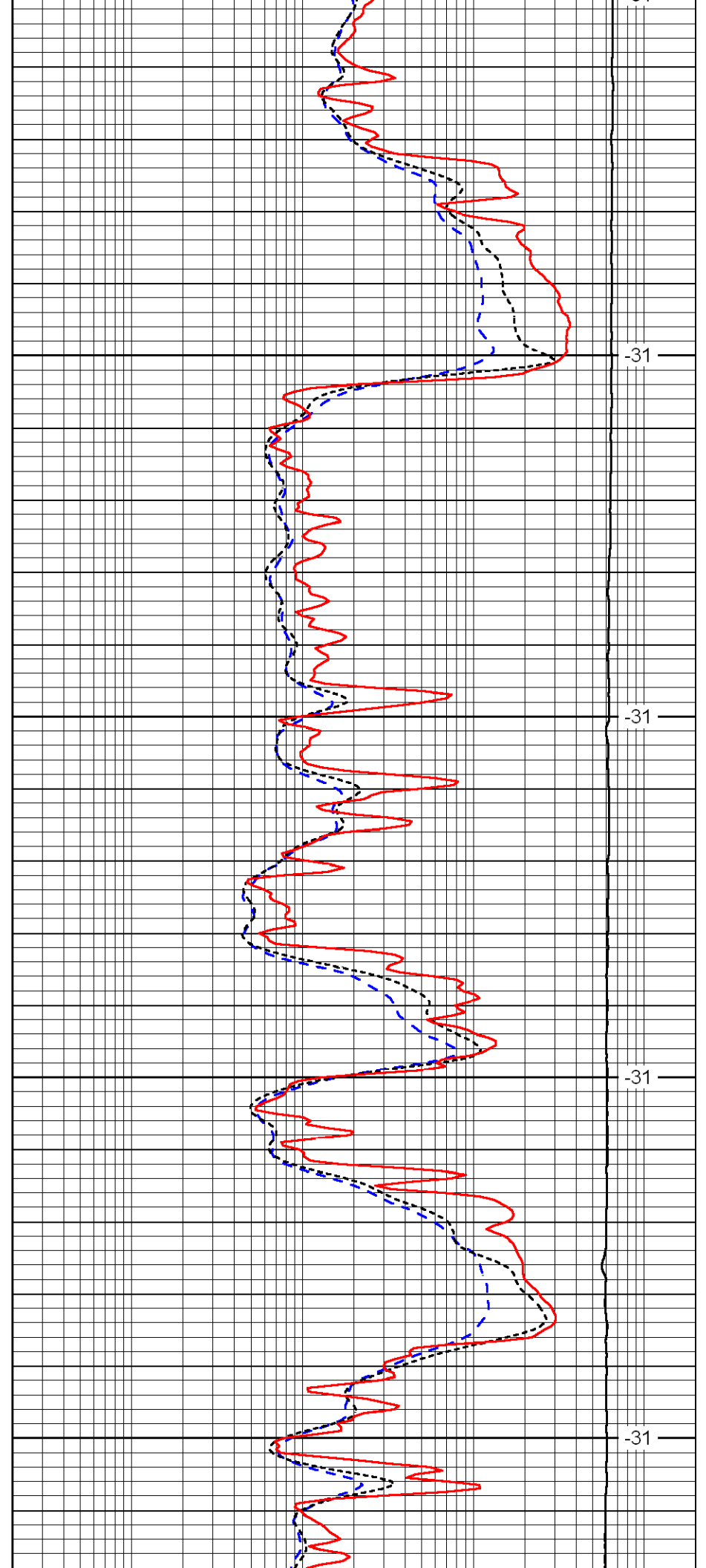


2600

2650

2700

2750

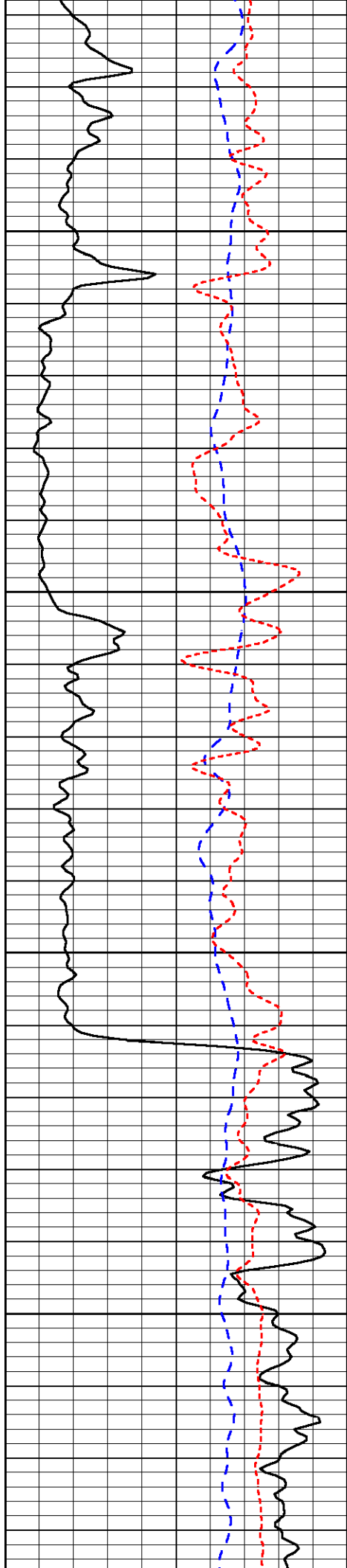


-31

-31

-31

-31

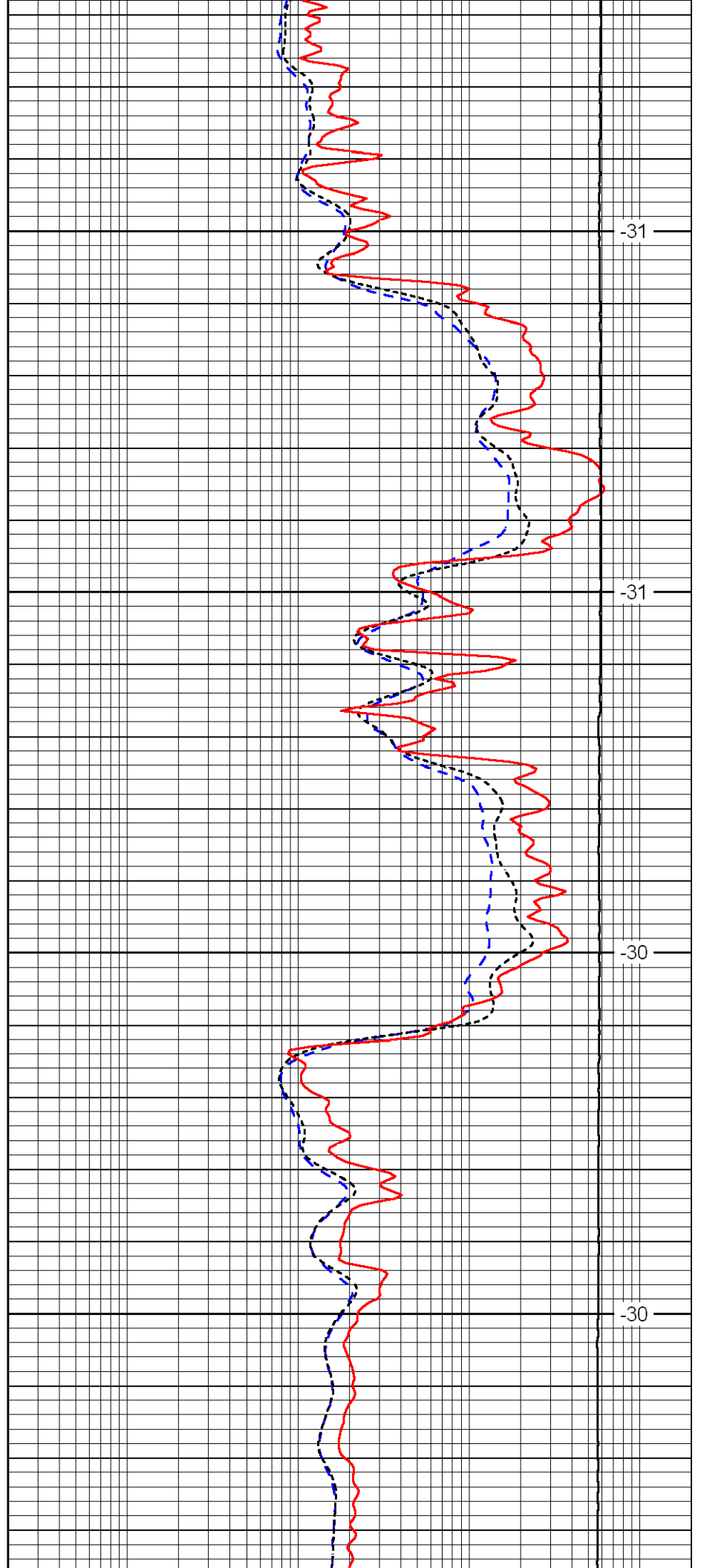


2800

2850

2900

2950

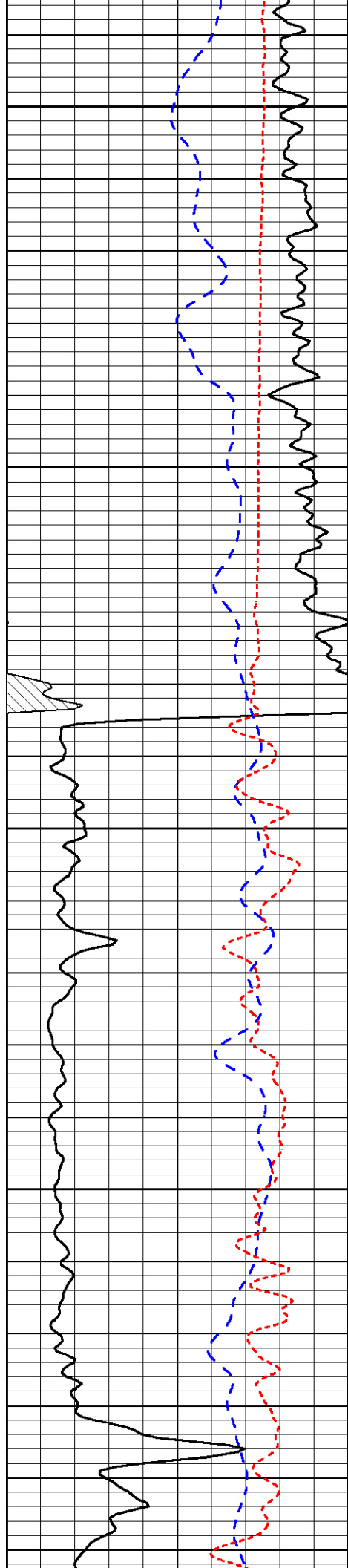


-31

-31

-30

-30



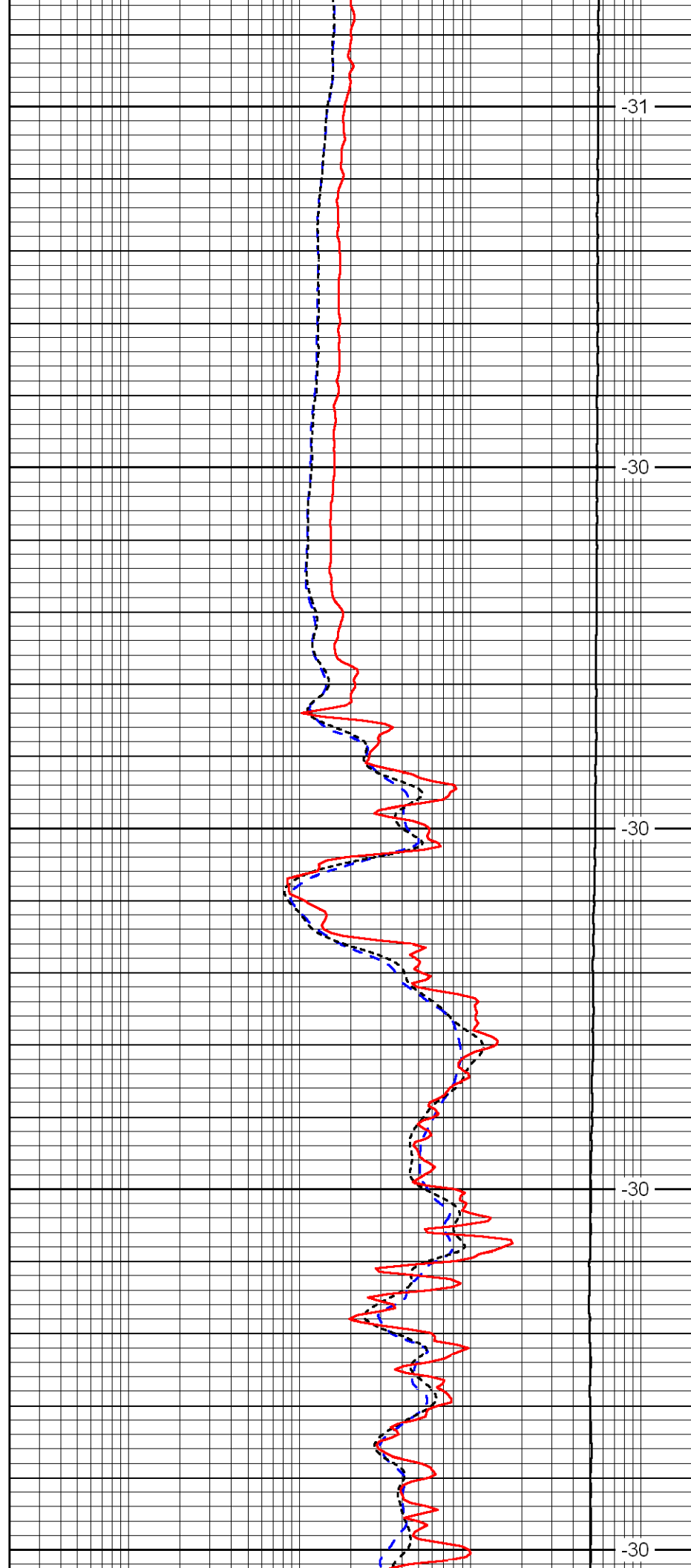
3000

3050

3100

3150

3200



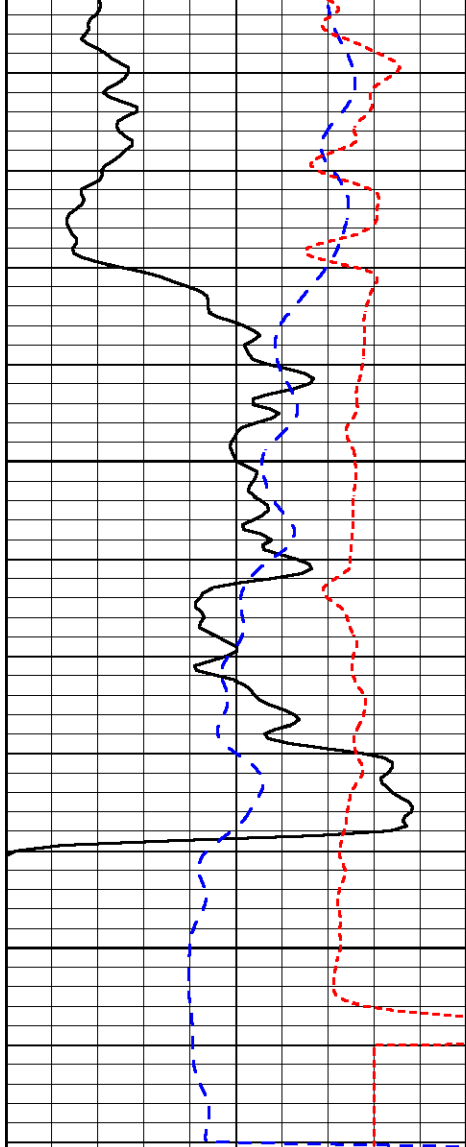
-31

-30

-30

-30

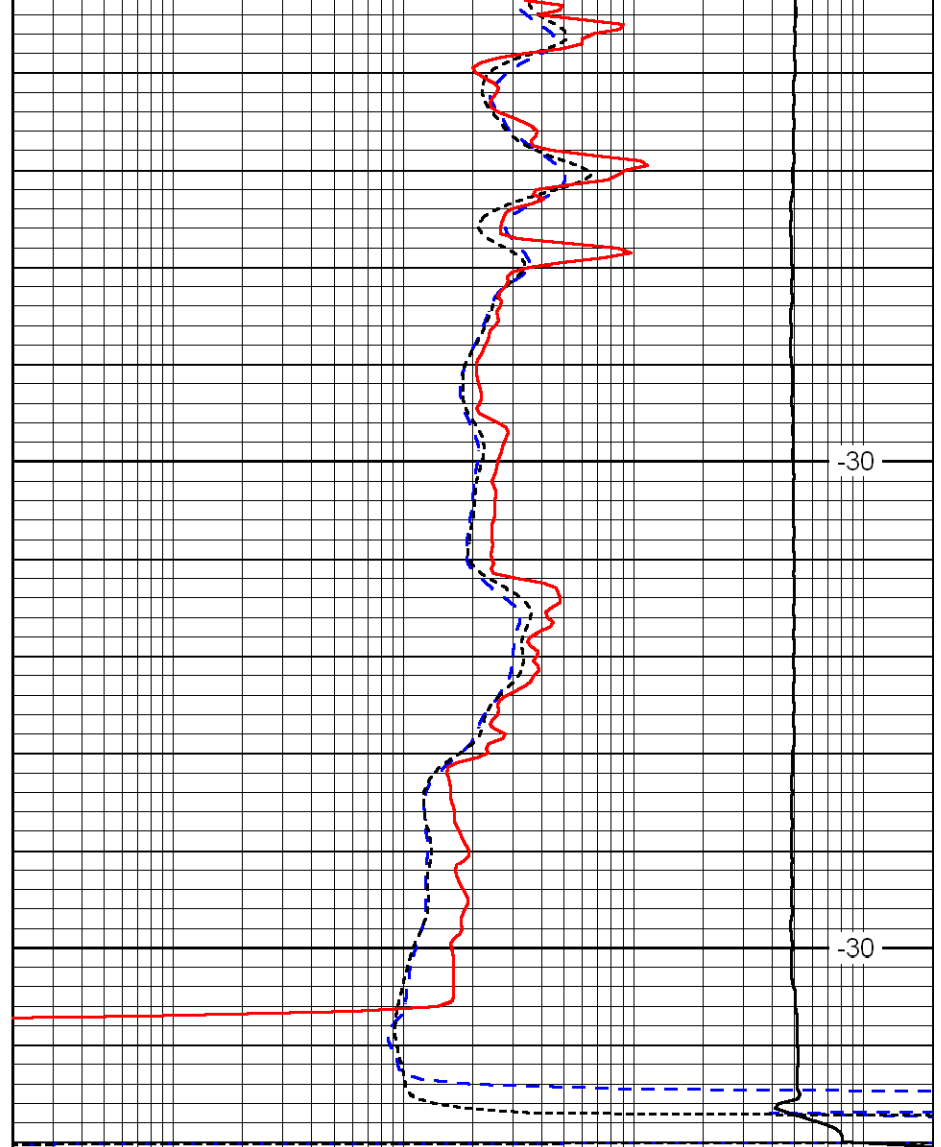
-30



3250

3300

0	Gamma Ray	150
-200	SP (MV)	0
-160	Rxo / Rt	40



-30

-30

0.2	Deep Resistivity (Ohm-m)	2000
0.2	Medium Resistivity (Ohm-m)	2000
0.2	Shallow Resistivity (Ohm-m)	2000
15000	Line Tension (lb)	0

LSPD
(ft/min)