



Dual Compensated Porosity Log

DIGITAL LOG (785) 625-3858

API No. 15-197-20,284-00-00

Company **Blake Production Company, Inc.**
 Well **Miller No.1**
 Field **Davis Ranch**
 County **Wabaunsee** State **Kansas**

Location **SW SW SW
330' FSL & 330' FWL**

Sec: **34** Twp: **13S** Rge: **10E**

Other Services
DIL

Permanent Datum **Ground Level** Elevation **1391**
 Log Measured From **Kelly Bushing** 10 Ft. Above Perm. Datum
 Drilling Measured From **Kelly Bushing**

K.B. 1401
 D.F. 1391

Date **1/24/2010**

Run Number **One**

Type Log **CNL / CDL**

Depth Driller **3315**

Depth Logger **3315**

Bottom Logged Interval **3294**

Top Logged Interval **1500**

Type Fluid In Hole **Chemical**

Salinity, PPM CL **19,000**

Density **1500**

Level **Full**

Max. Rec. Temp. F **111**

Operating Rig Time **2 1/2 Hours**

Equipment -- Location **17 Hays**

Recorded By **C. Desaire**

Witnessed By **Justin Craig**

Run No	Bit	Borehole Record		Size	Wgt.	Casing Record	
		From	To			From	To
1	9.5	00	309	10.75		00	309
2	9.5	309	3315				

<<< Fold Here >>>

All interpretations are opinions based on inferences from electrical or other measurements and we cannot and do not guarantee the accuracy or correctness of any interpretation, and we shall not, except in the case of gross or willful negligence on our part, be liable or responsible for any loss, costs, damages, or expenses incurred or sustained by anyone resulting from any interpretation made by any of our officers, agents or employees. These interpretations are also subject to our general terms and conditions set out in our current Price Schedule.

Comments

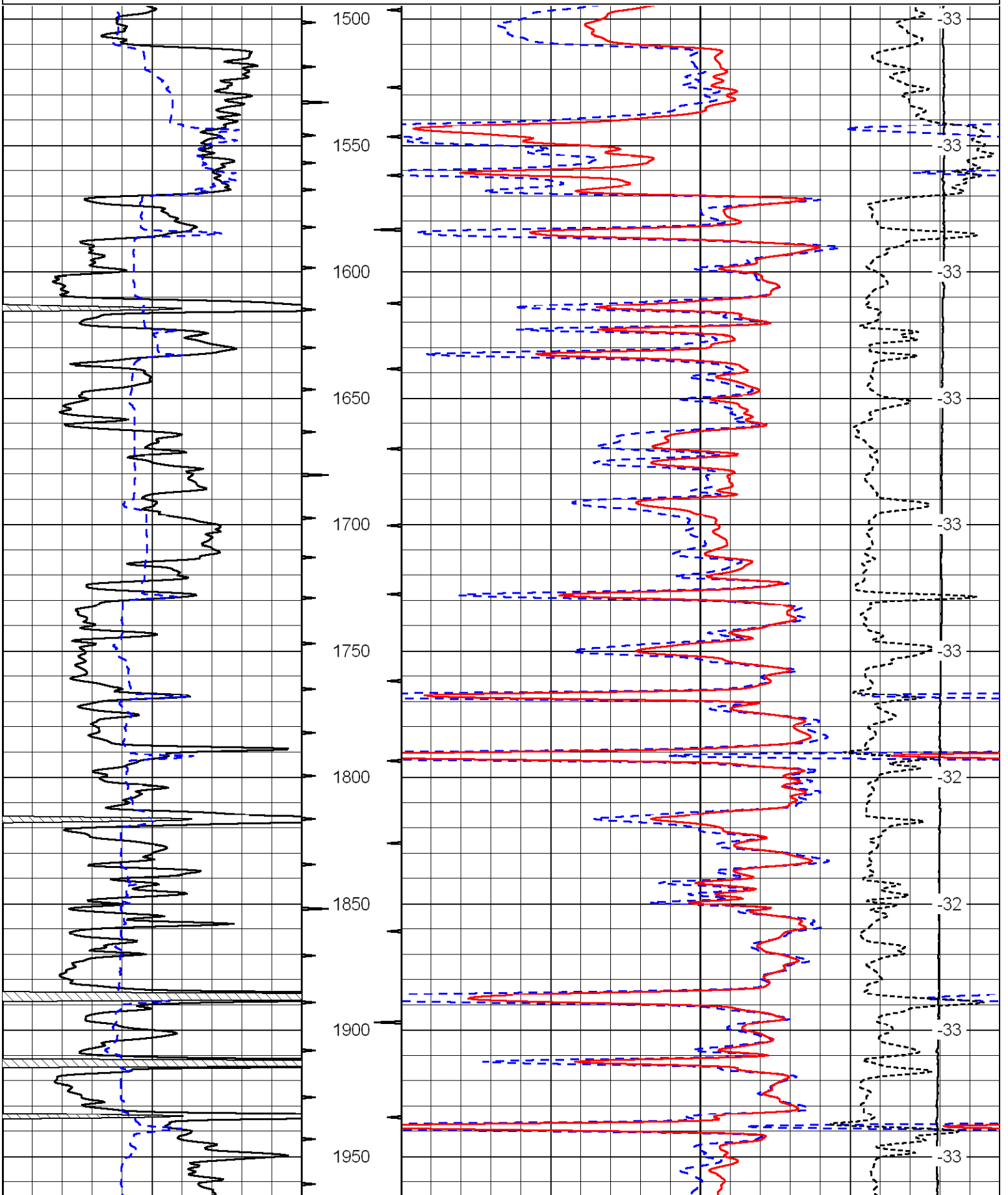
Thank you for using Log-Tech, Inc.
(785) 625-3858

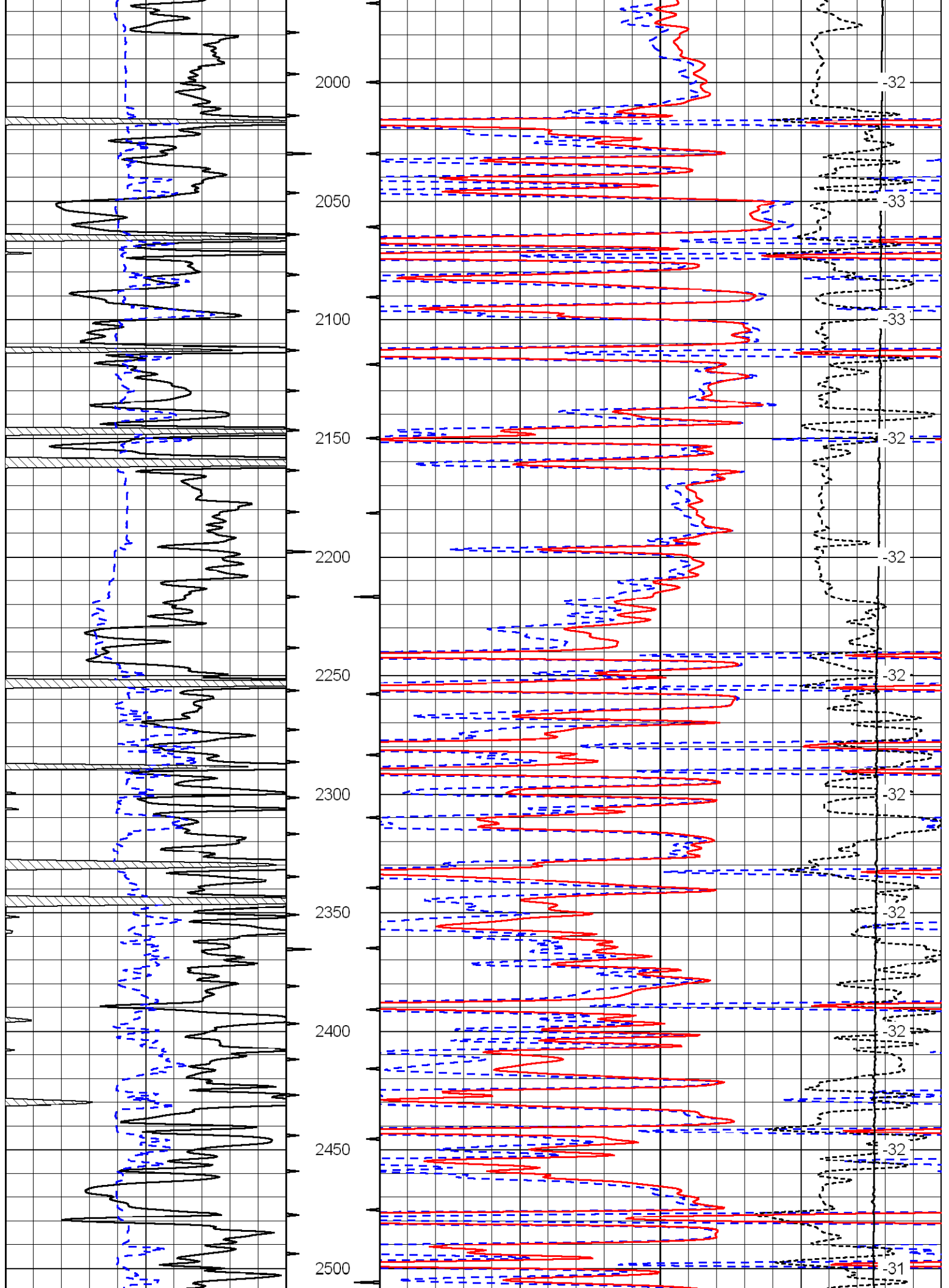
Alma, 14 S on Hwy 4, W Into

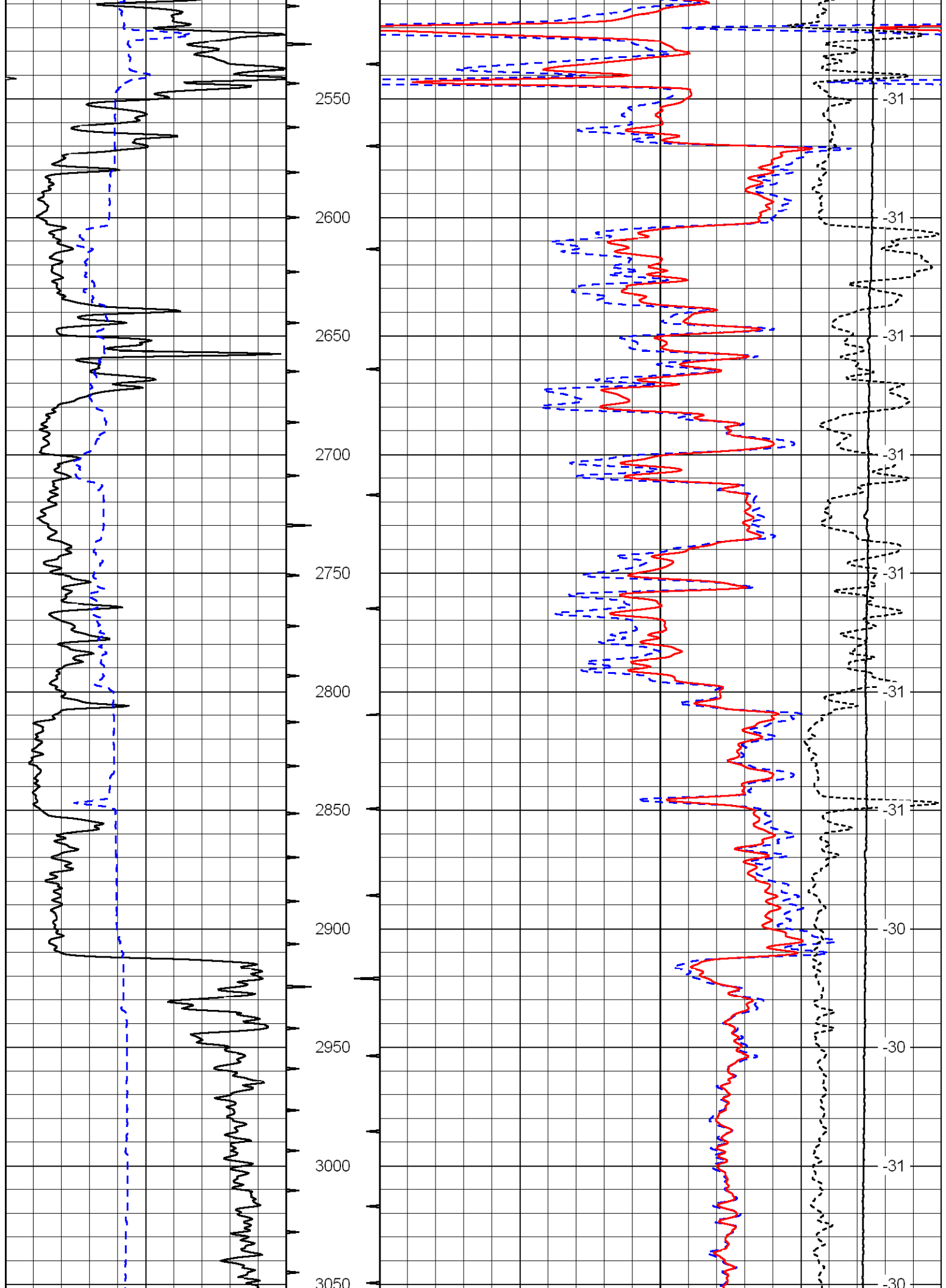
Database File: c:\warrior\data\blake production_miller no.1\blakehd.db
 Dataset Pathname: dil/blakestk6
 Presentation Format: cdl
 Dataset Creation: Sun Jan 24 09:46:22 2010
 Charted by: Depth in Feet scaled 1:600

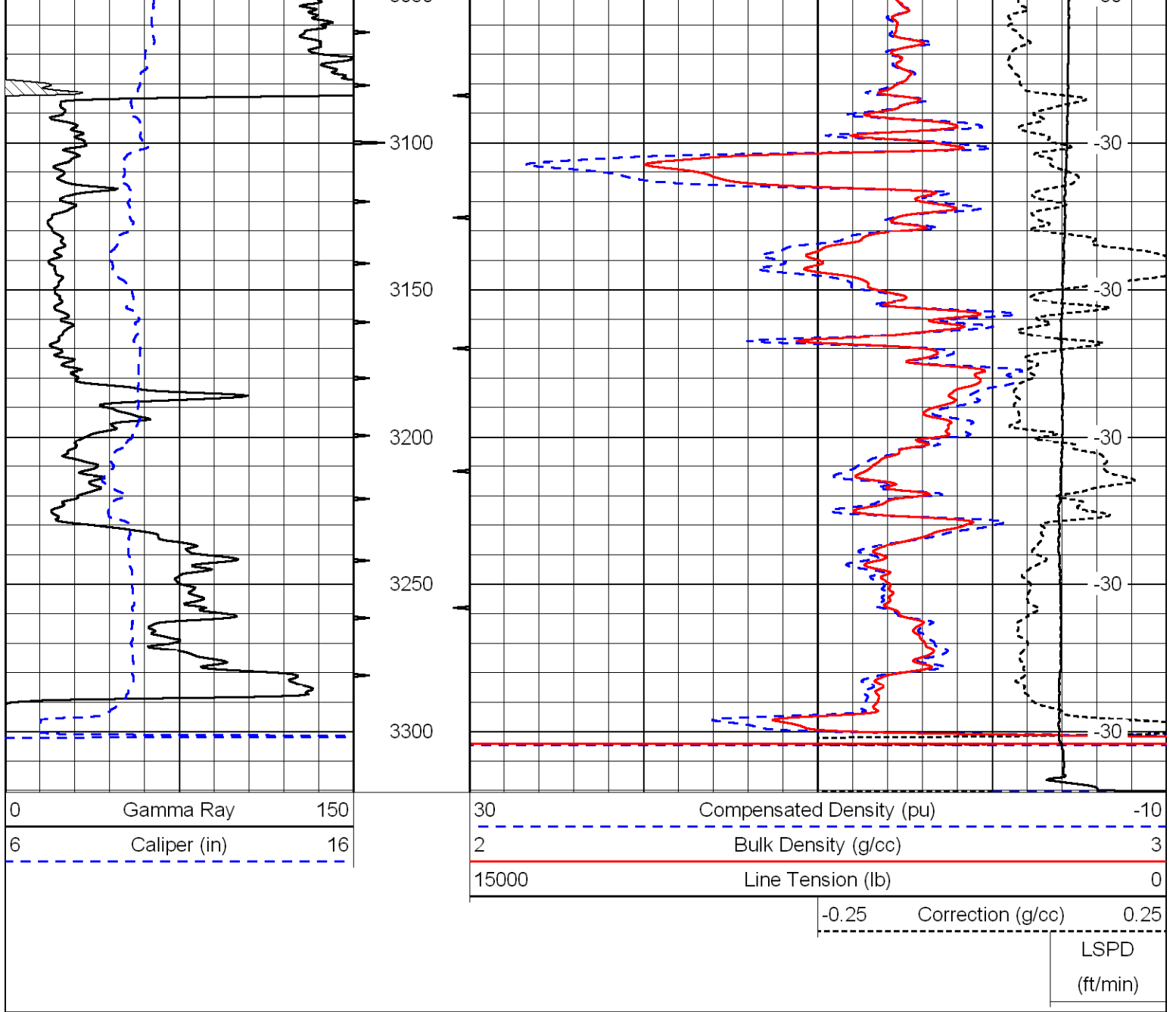
0	Gamma Ray	150
6	Caliper (in)	16

30	Compensated Density (pu)	-10
2	Bulk Density (g/cc)	3
15000	Line Tension (lb)	0
-0.25	Correction (g/cc)	0.25
		LSPD (ft/min)









Database File: c:\warrior\data\blake production_miller no.1\blakehd.db
 Dataset Pathname: dil/blakestk6
 Presentation Format: cndlspec
 Dataset Creation: Sun Jan 24 09:46:22 2010
 Charted by: Depth in Feet scaled 1:240

