



**Borehole Compensated
Sonic Log**

DIGITAL LOG (785) 625-3858

API No.	15-109-20939-00-00
Company	Hartman Oil Co., Inc.
Well	Zerr No. 1
Field	Wildcat
County	Logan
Location	1829' FSL & 1817' FWL
State	Kansas
Sec: 32	Twp: 11S Rge: 33W
Other Services	CNL / CDL MEL / DIL

Permanent Datum	Ground Level	Elevation 3143
Log Measured From	Kelly Bushing	10 Ft. Above Perm. Datum
Drilling Measured From	Kelly Bushing	
Date	9/15/2010	Elevation K.B. 3153 D.F. 3143 G.L. 3143

Run Number	Two
Type Log	BHC Sonic
Depth Driller	4760
Depth Logger	4764
Bottom Logged Interval	4753
Top Logged Interval	300
Type Fluid In Hole	Chemical
Salinity, PPM CL	3400
Density	9.2
Level	Full
Max. Rec. Temp. F	126
Operating Rig Time	4 Hours
Equipment -- Location	17 Days
Recorded By	R. Barnhart
Witnessed By	Steve Murphy

Borehole Record				Casing Record			
Run No.	Bit	From	To	Size	Wgt.	From	To
1	12.25	00	353	8.625	24#	00	353
2	7.875	353	4760				

<<< Fold Here >>>

All interpretations are opinions based on inferences from electrical or other measurements and we cannot and do not guarantee the accuracy or correctness of any interpretation, and we shall not, except in the case of gross or willful negligence on our part, be liable or responsible for any loss, costs, damages, or expenses incurred or sustained by anyone resulting from any interpretation made by any of our officers, agents or employees. These interpretations are also subject to our general terms and conditions set out in our current Price Schedule.

Comments

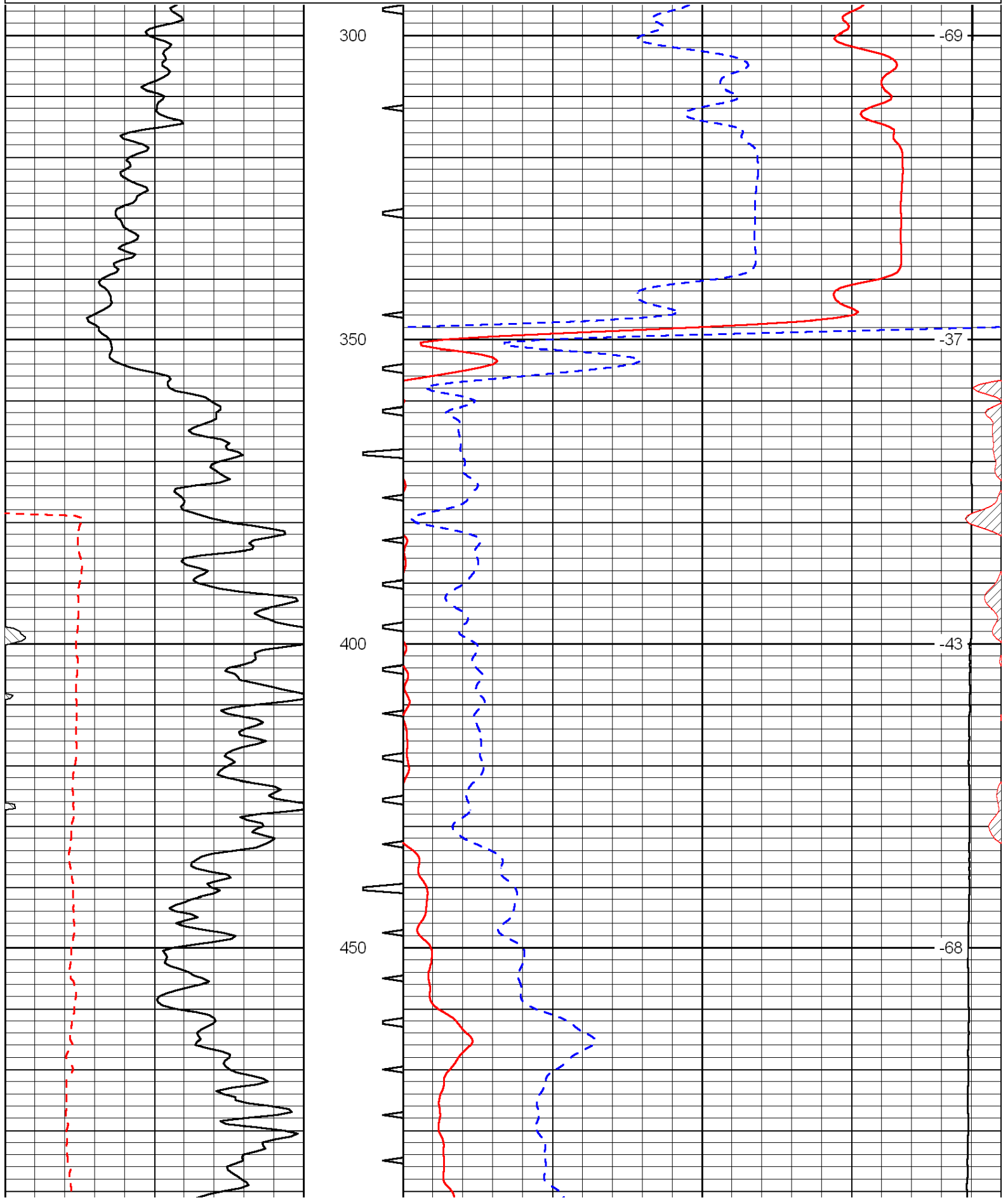
Thank you for using Log-Tech, Inc.
(785) 625-3858

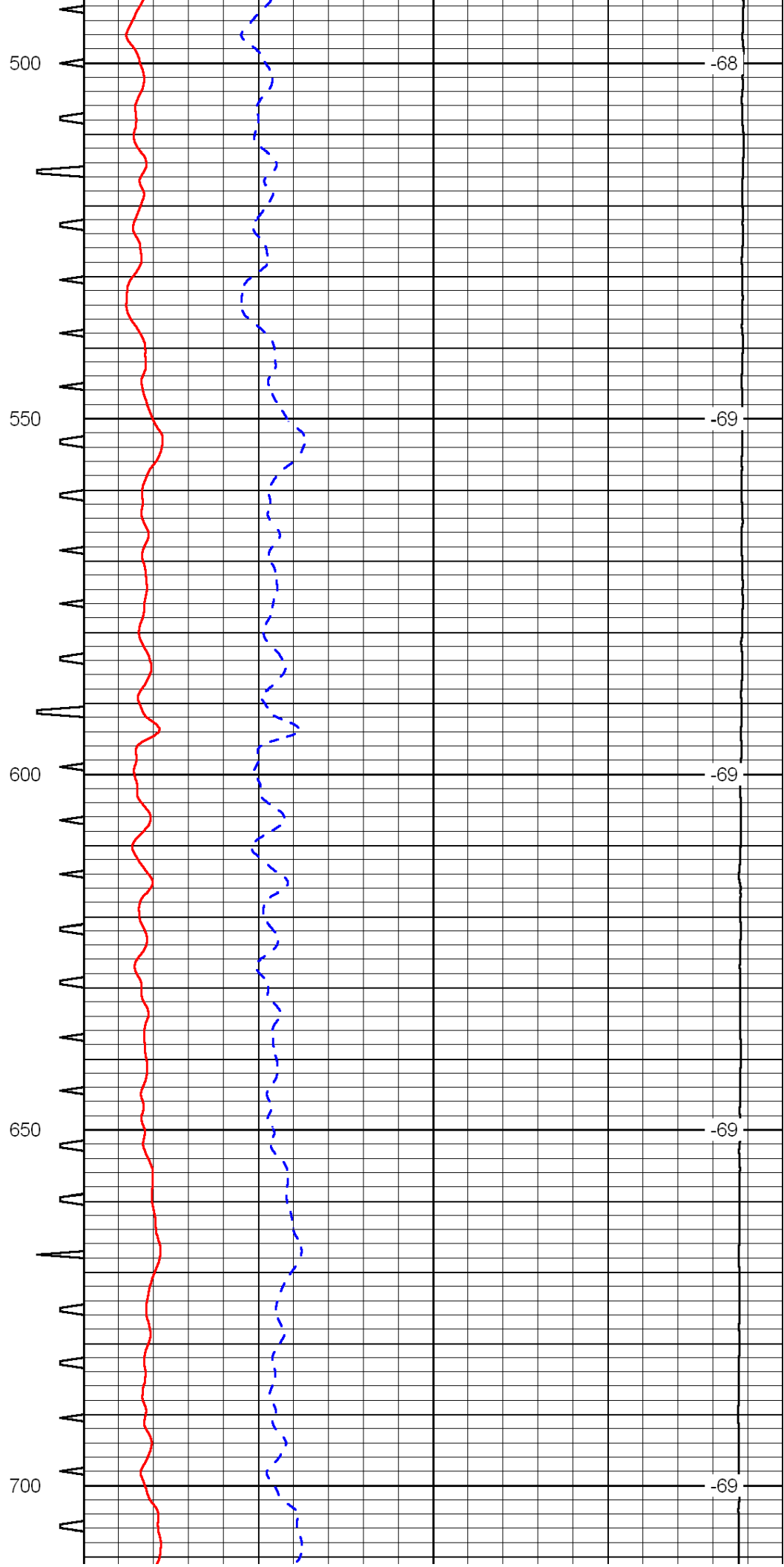
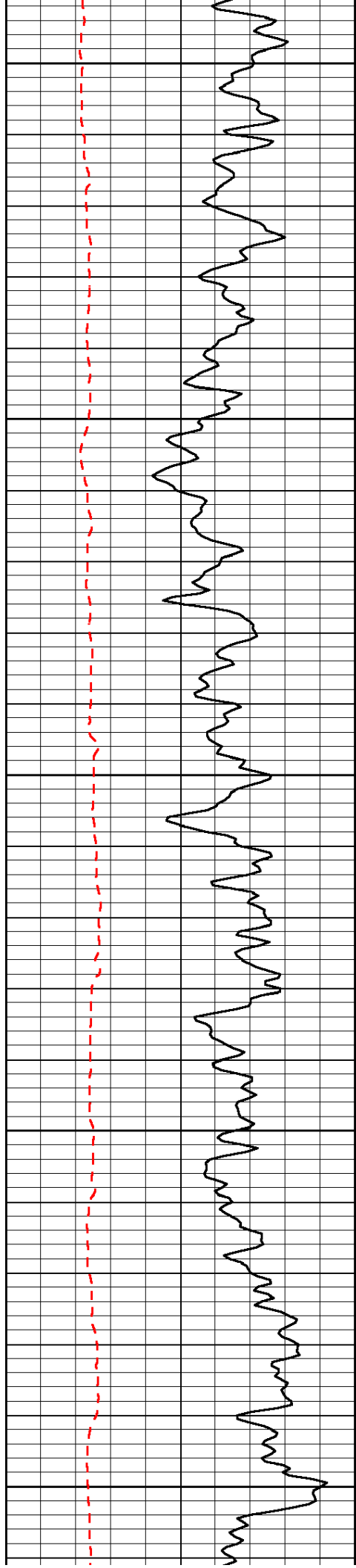
Monument, KS
4S, 1/2E, N into

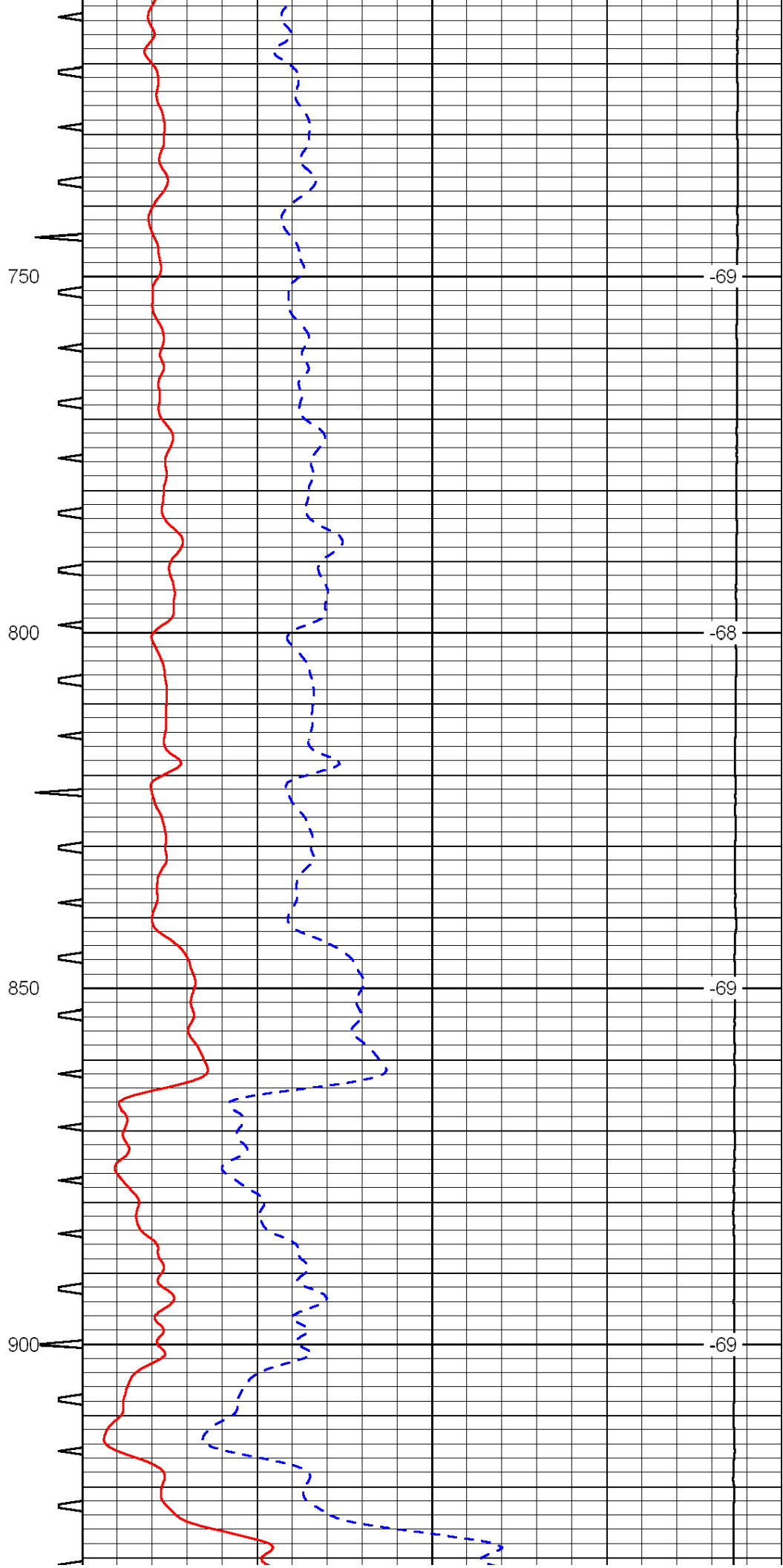
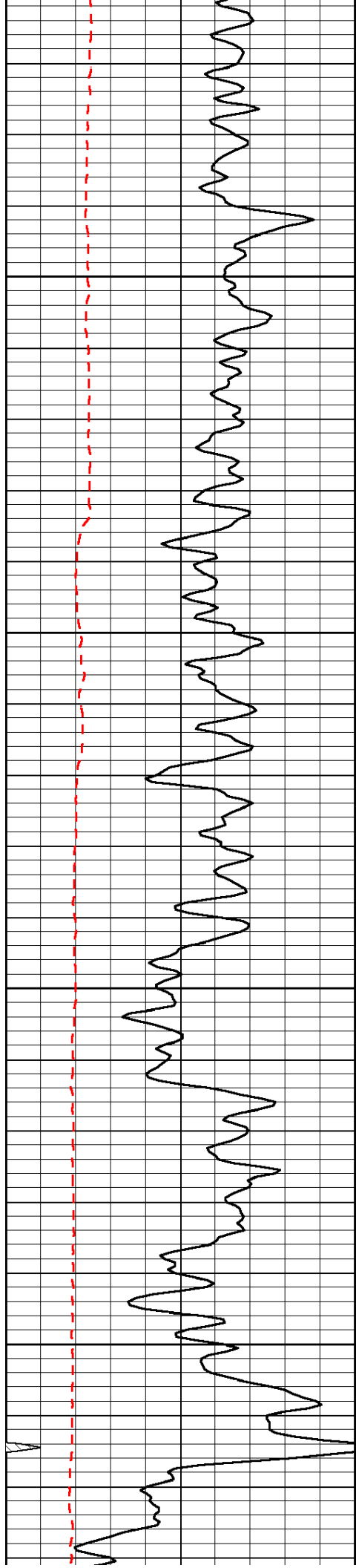
Database File: c:\warrior\data\hartman_zerr no. 1\hartman.db
 Dataset Pathname: stack/zerrstk
 Presentation Format: sonic
 Dataset Creation: Thu Sep 16 00:39:35 2010
 Charted by: Depth in Feet scaled 1:240

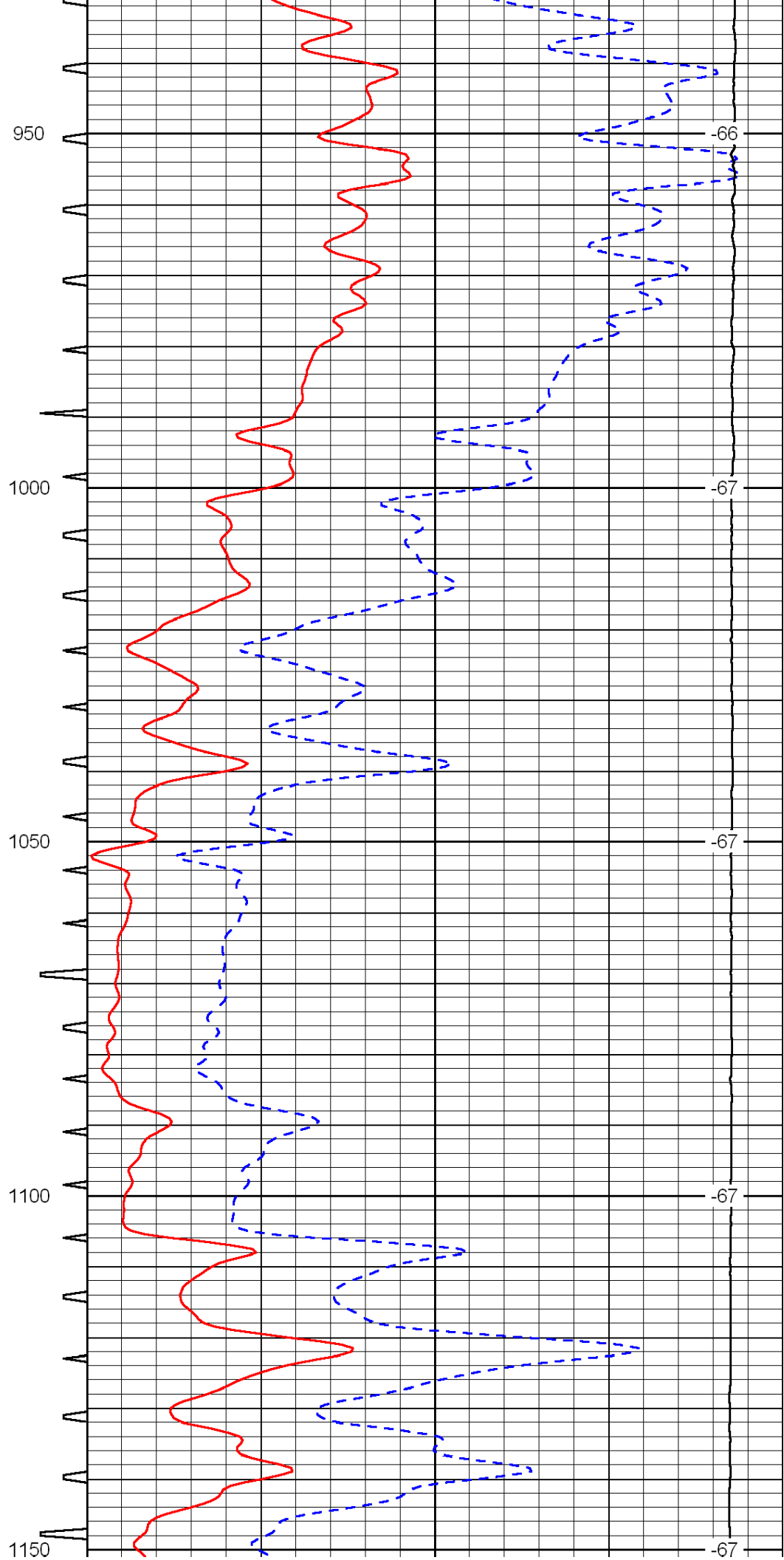
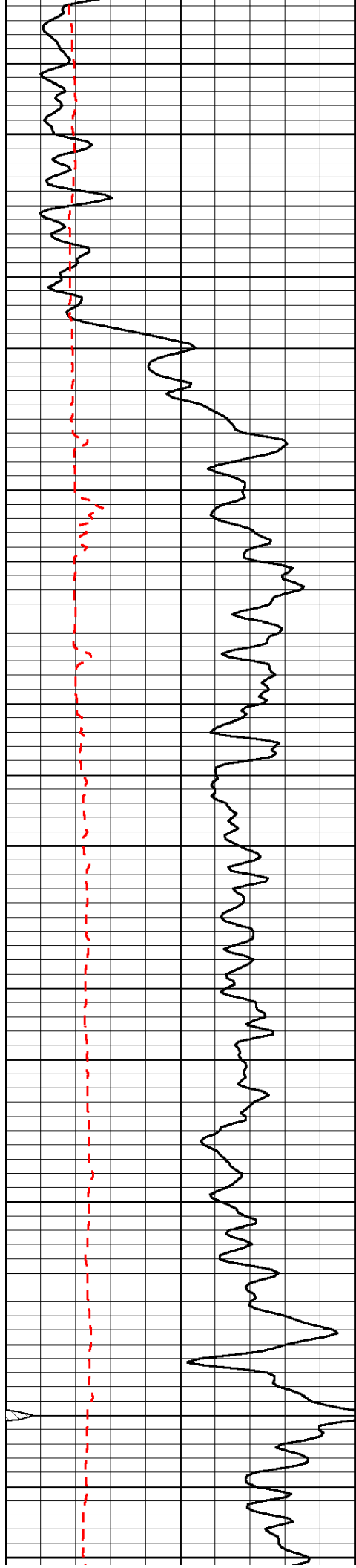
0	Gamma Ray	150	Sonic Int	140	Delta Time (usec/ft)	40
150	Gamma Ray	300	5	0	SPOR	-10
6	Caliper (GAPI)	16		15000	LTEN (lb)	0

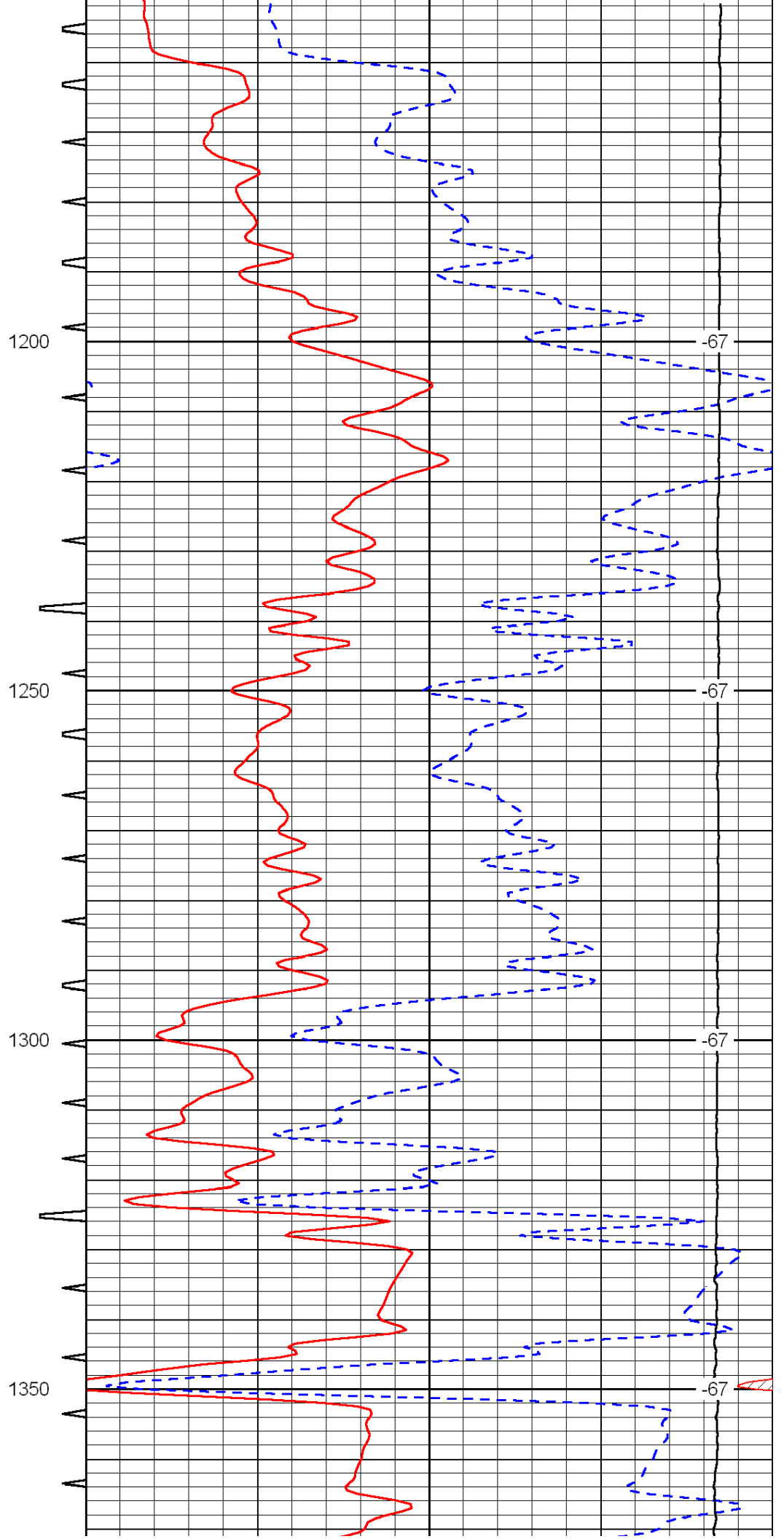
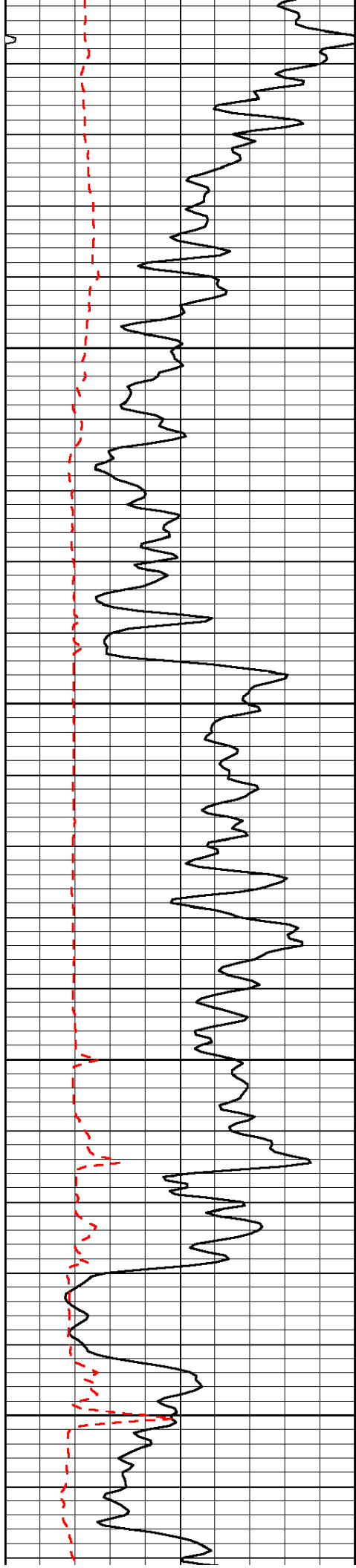
LSPD

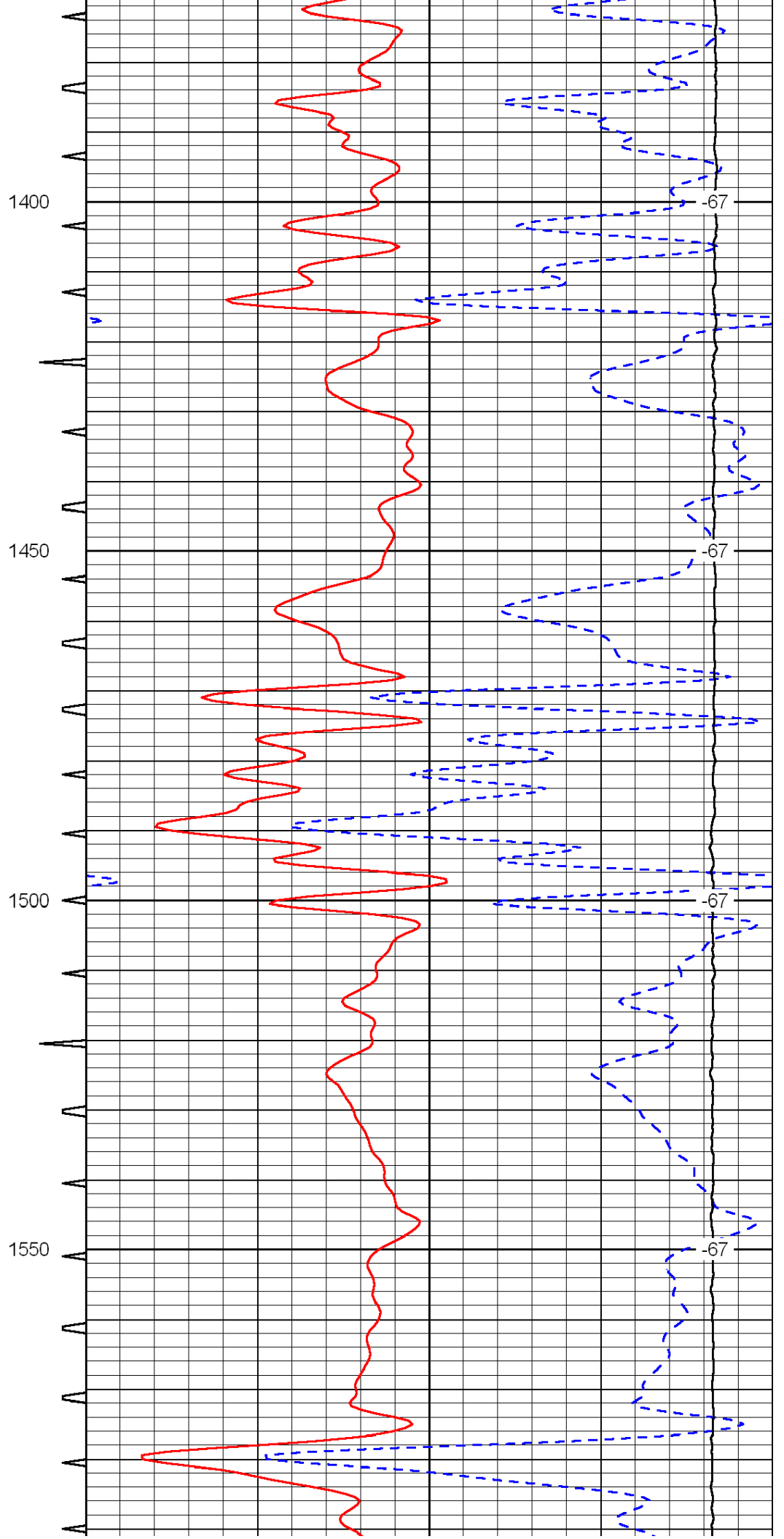
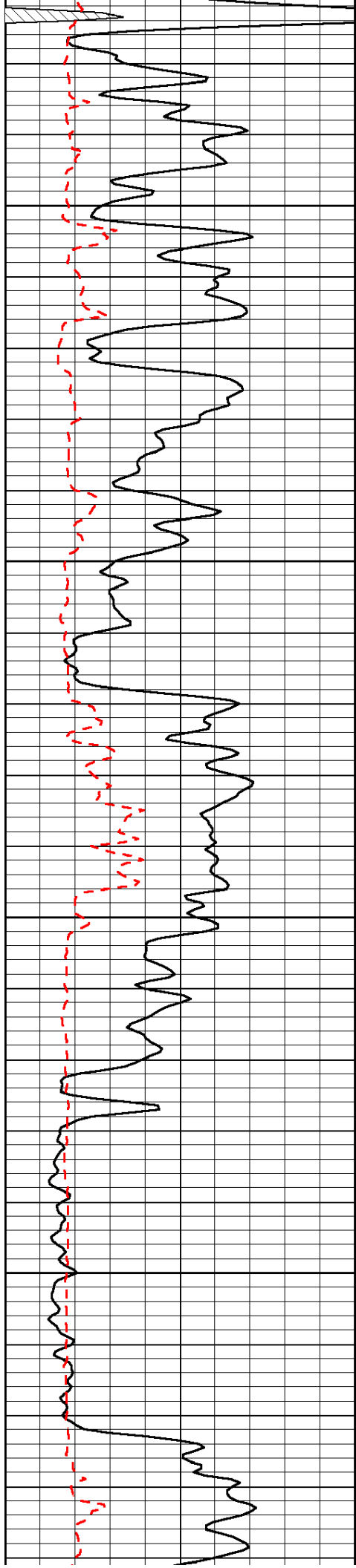


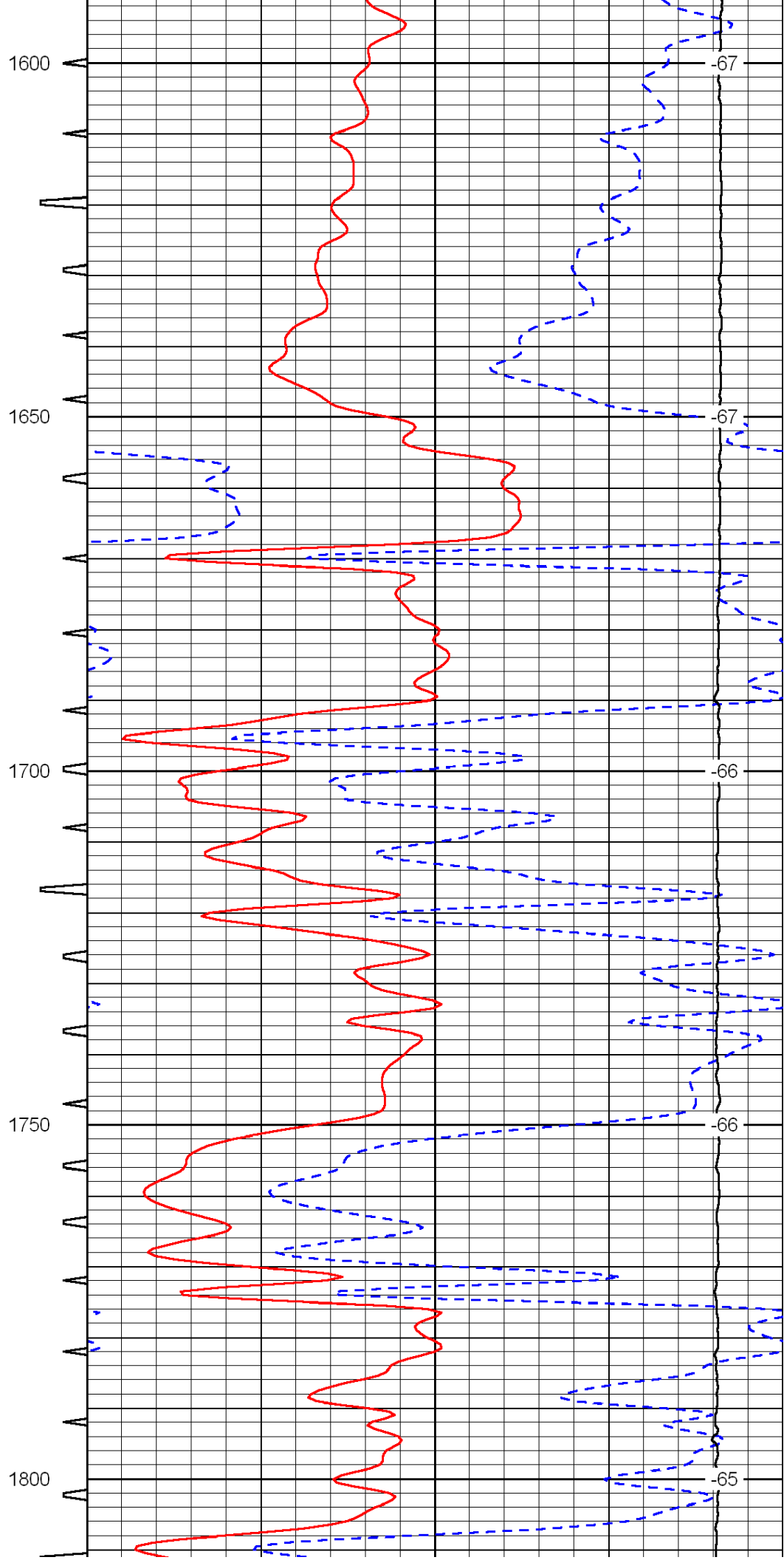
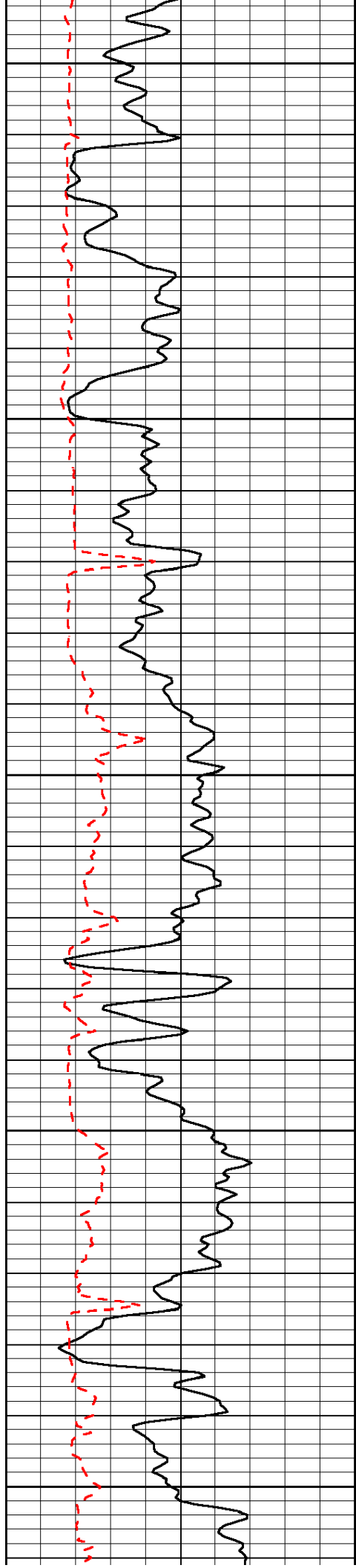


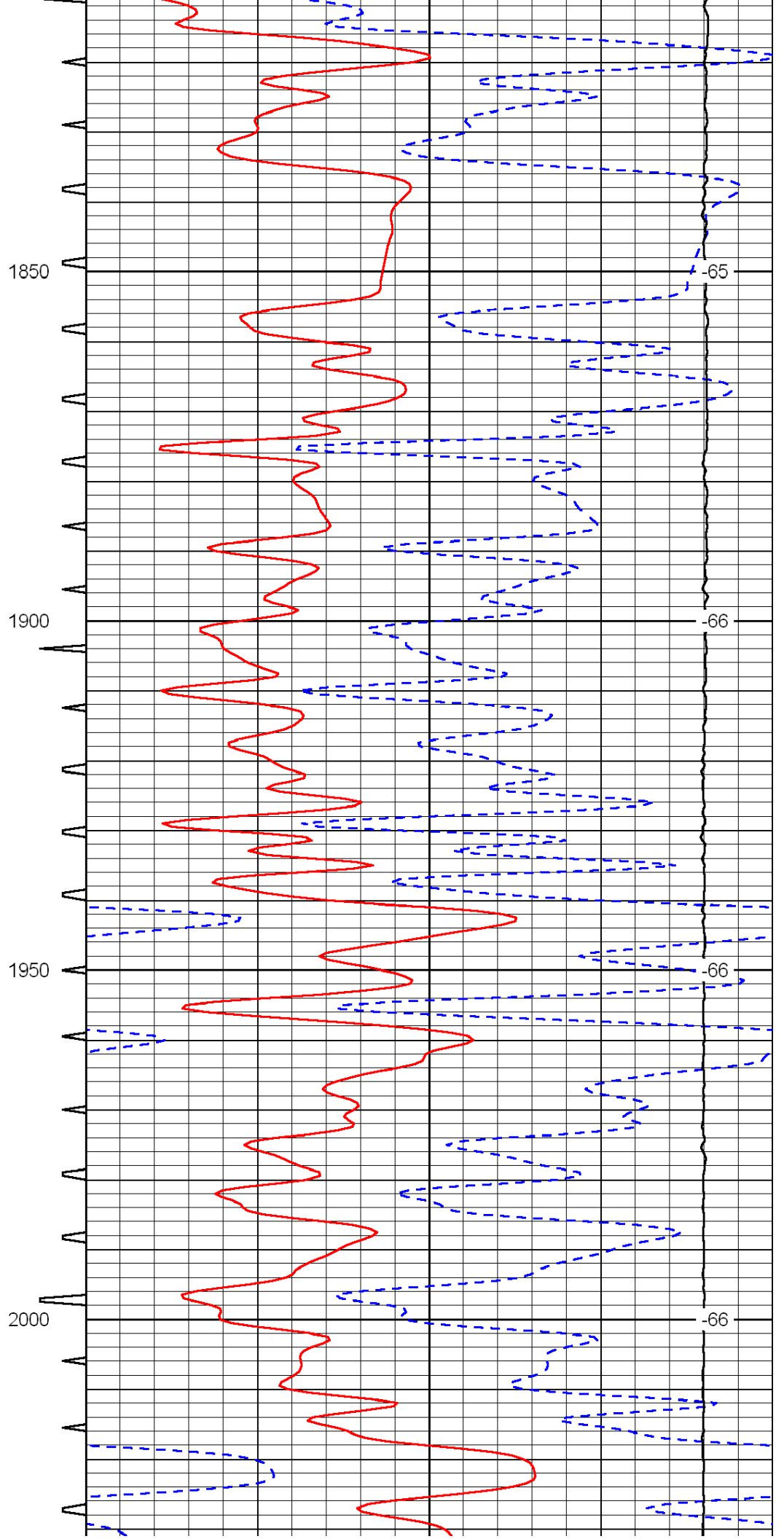
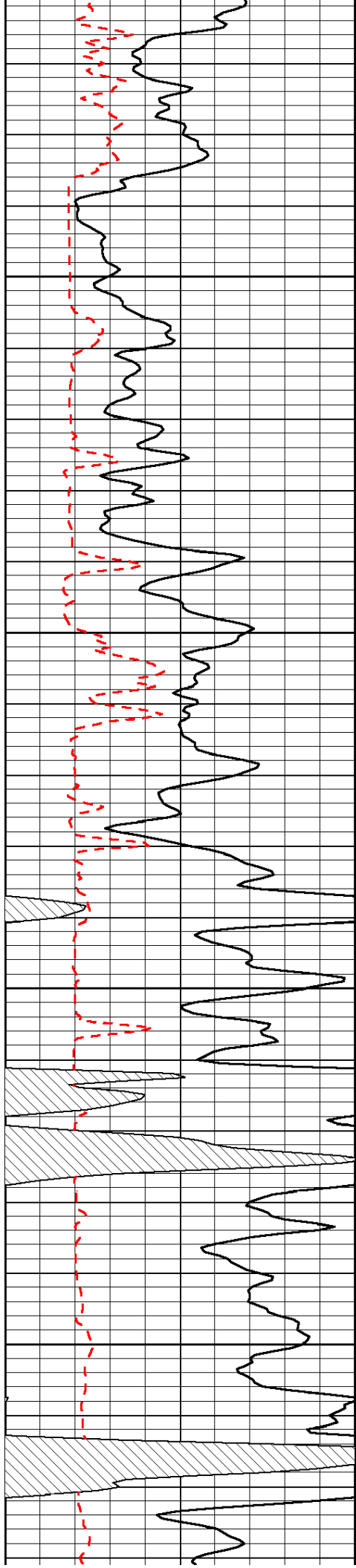


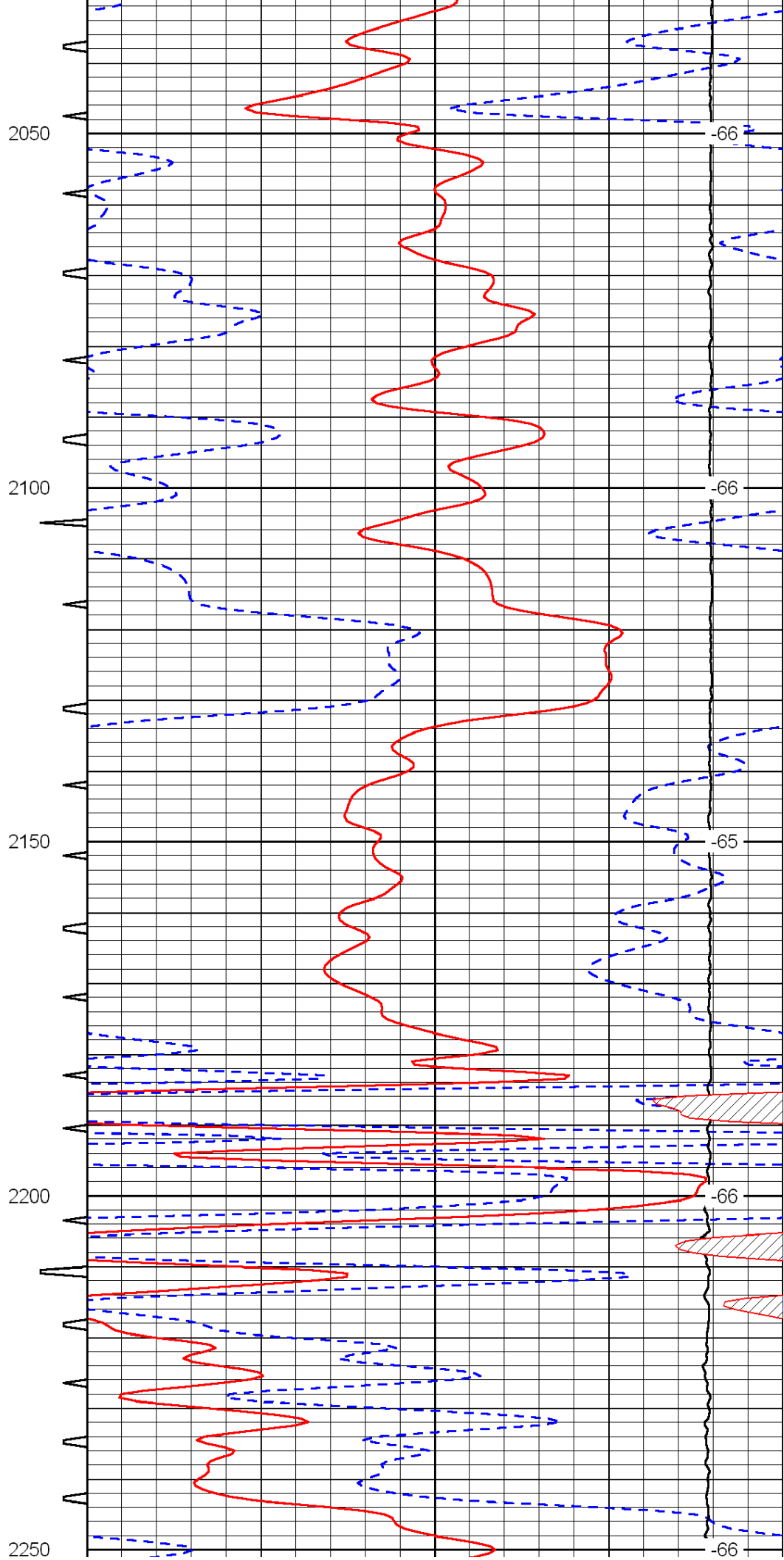
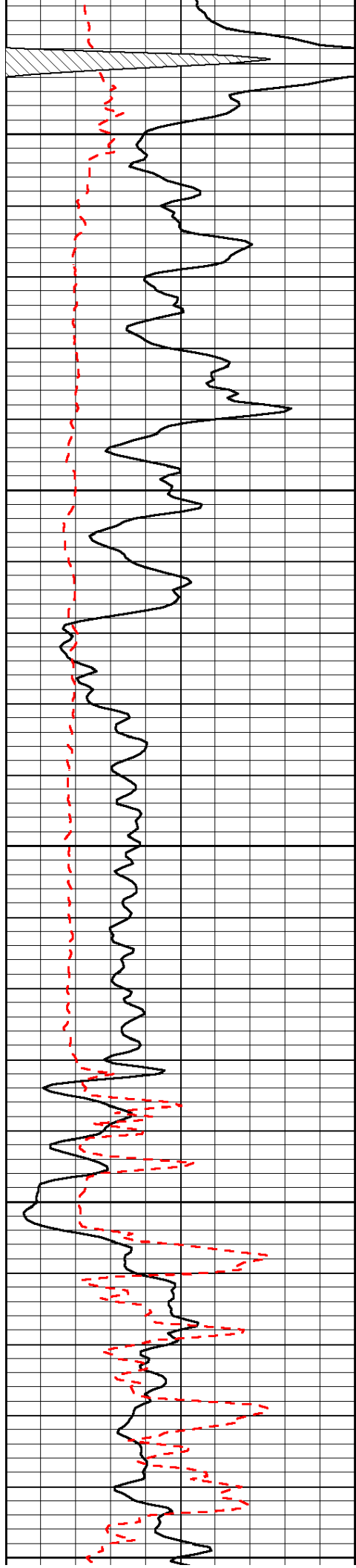


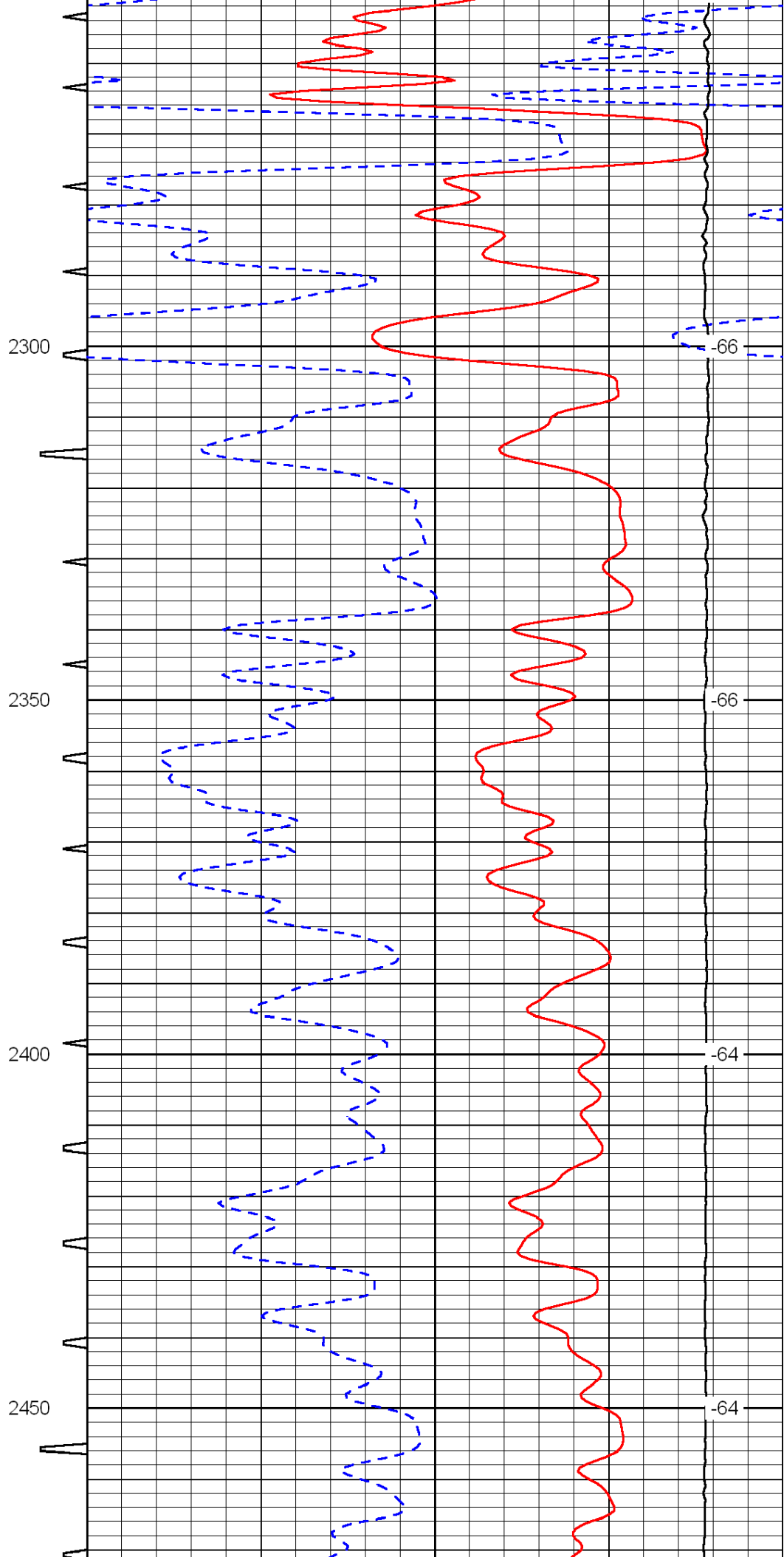
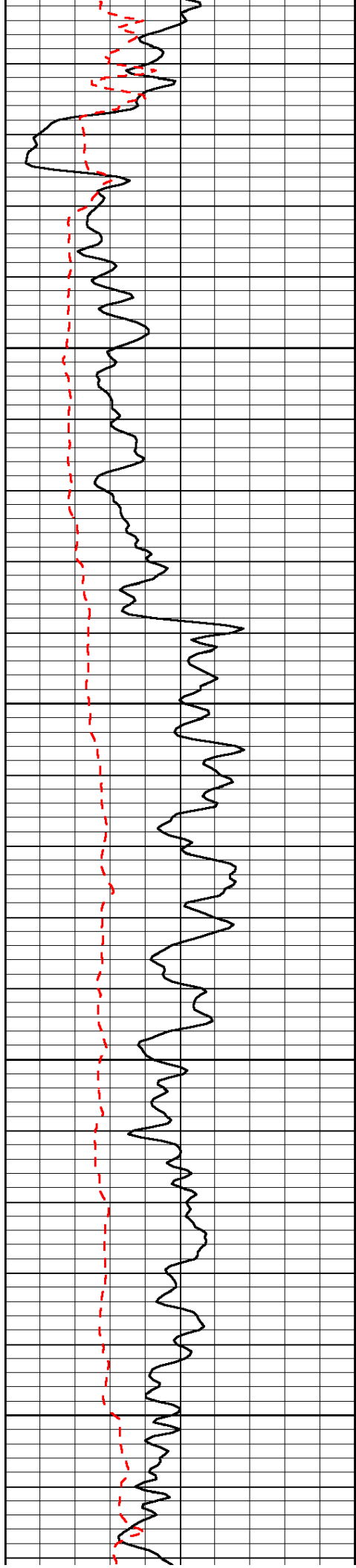


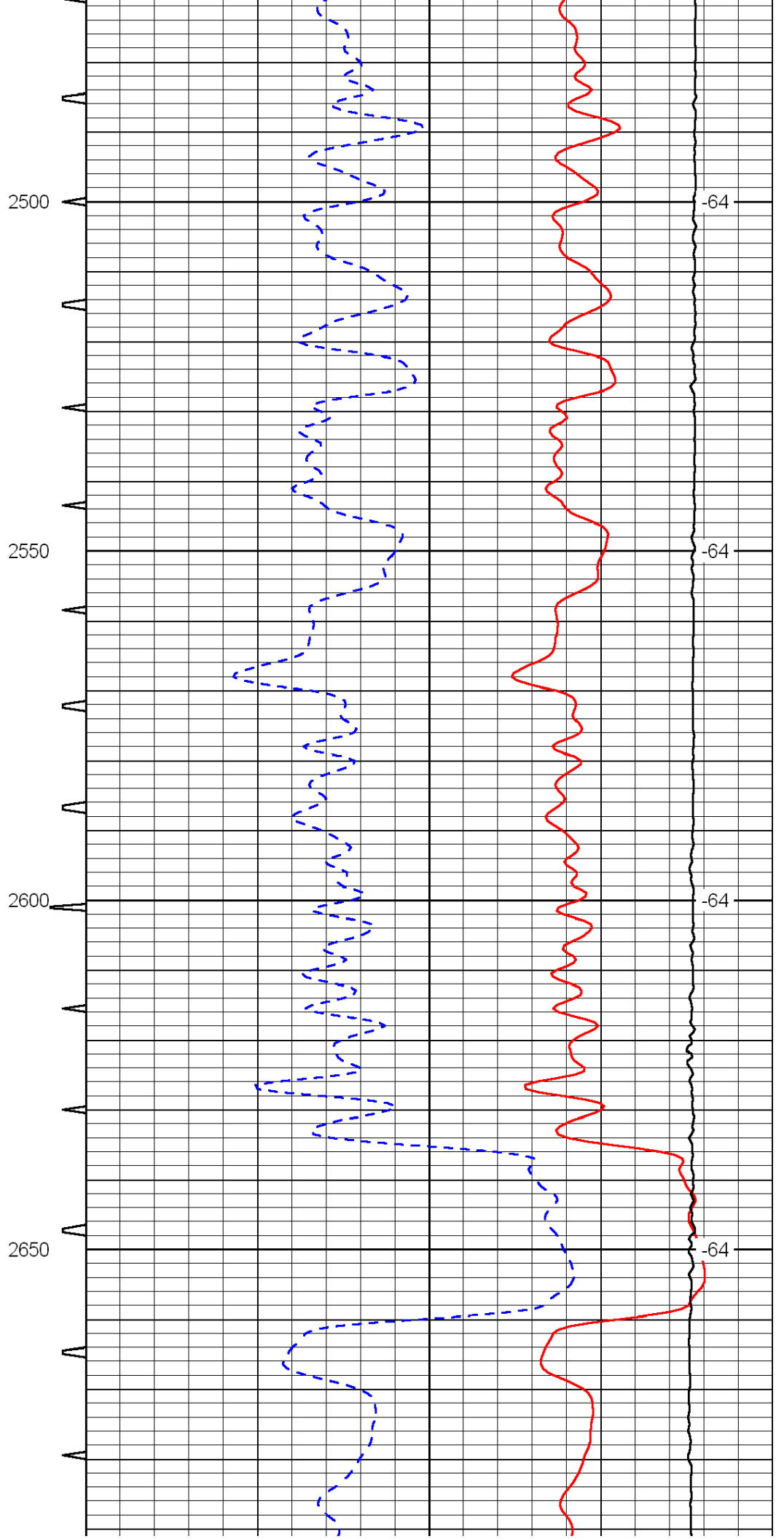
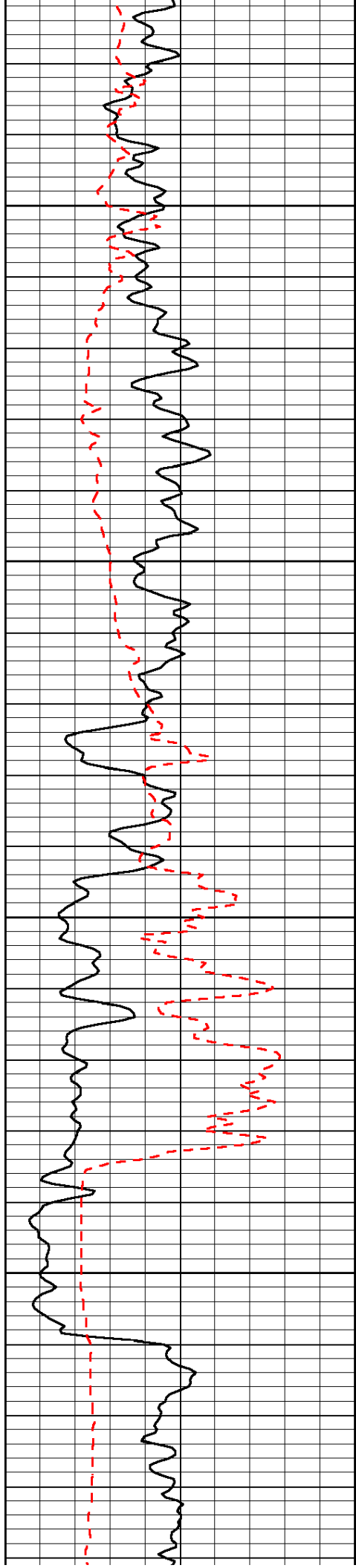


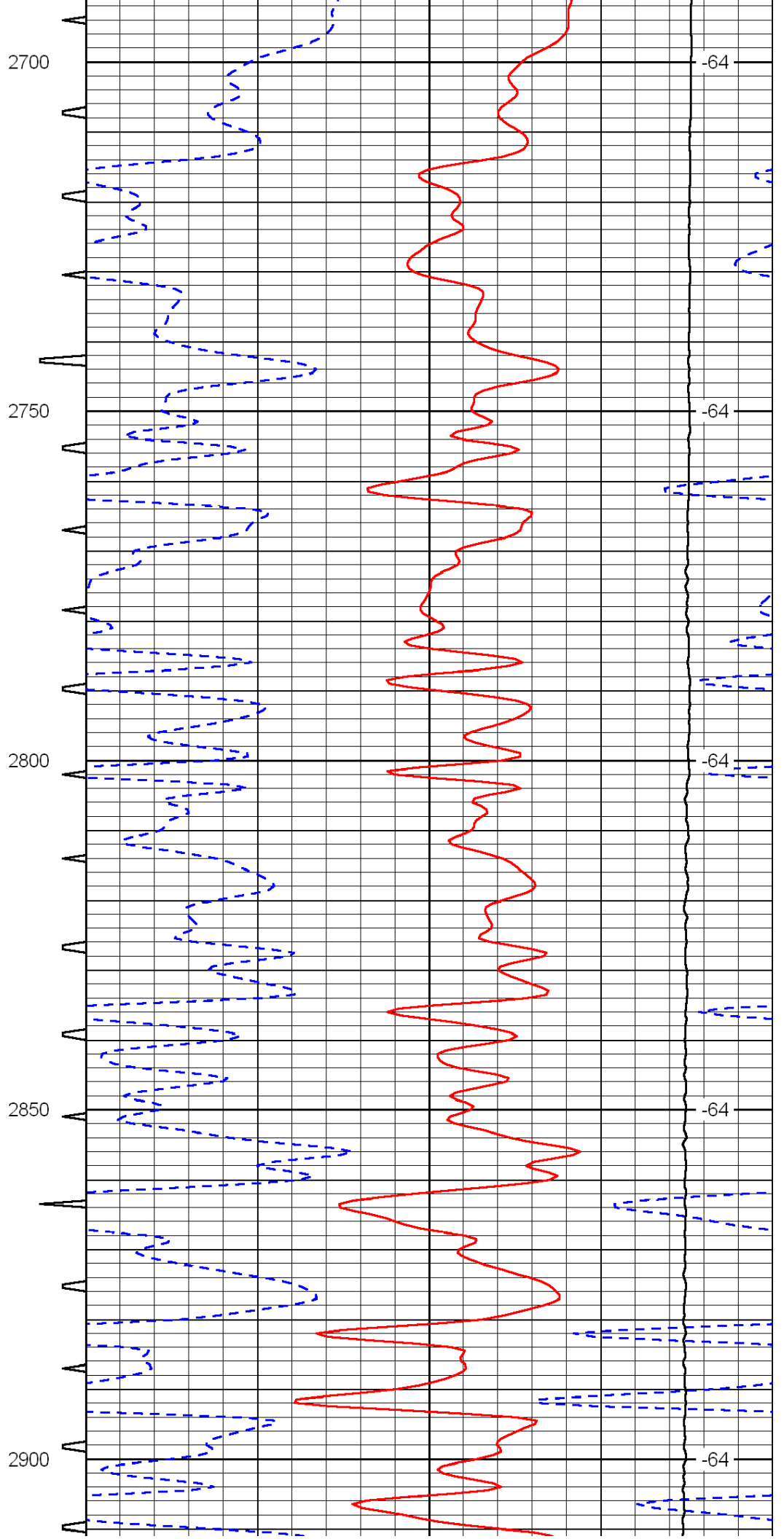
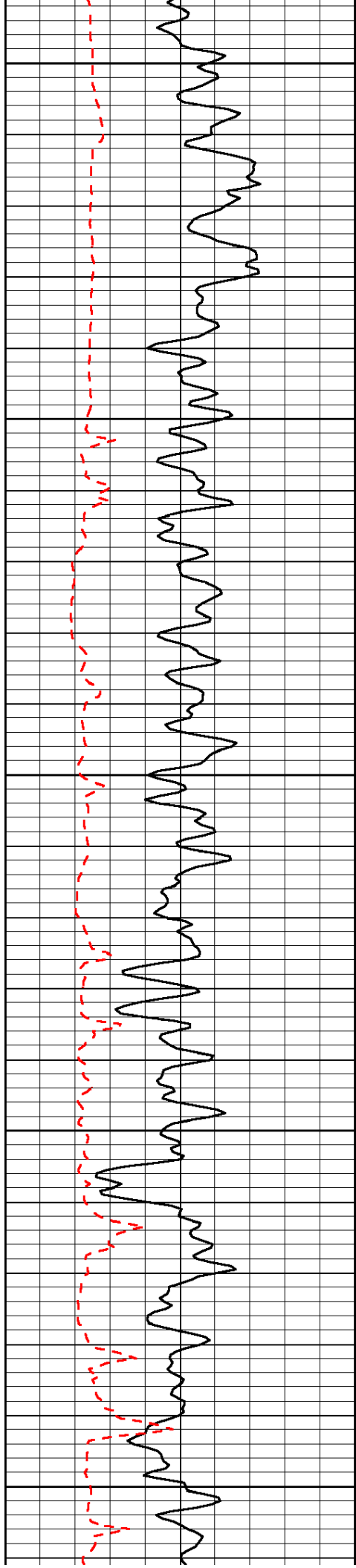


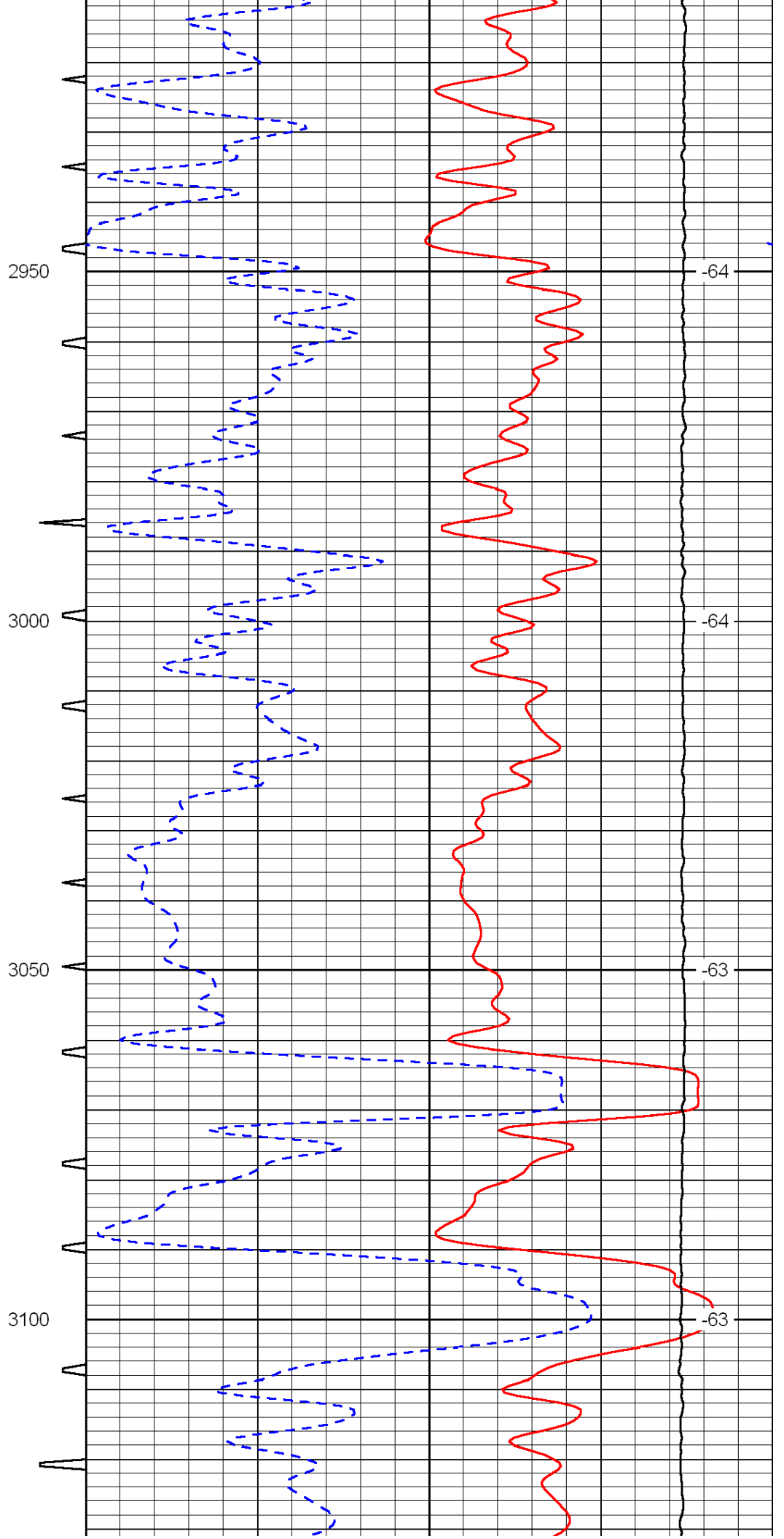
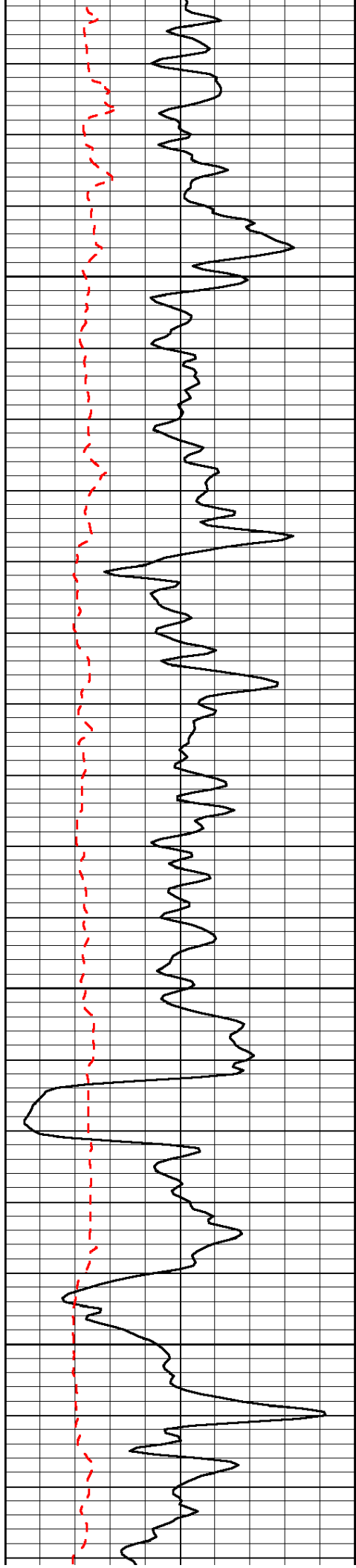


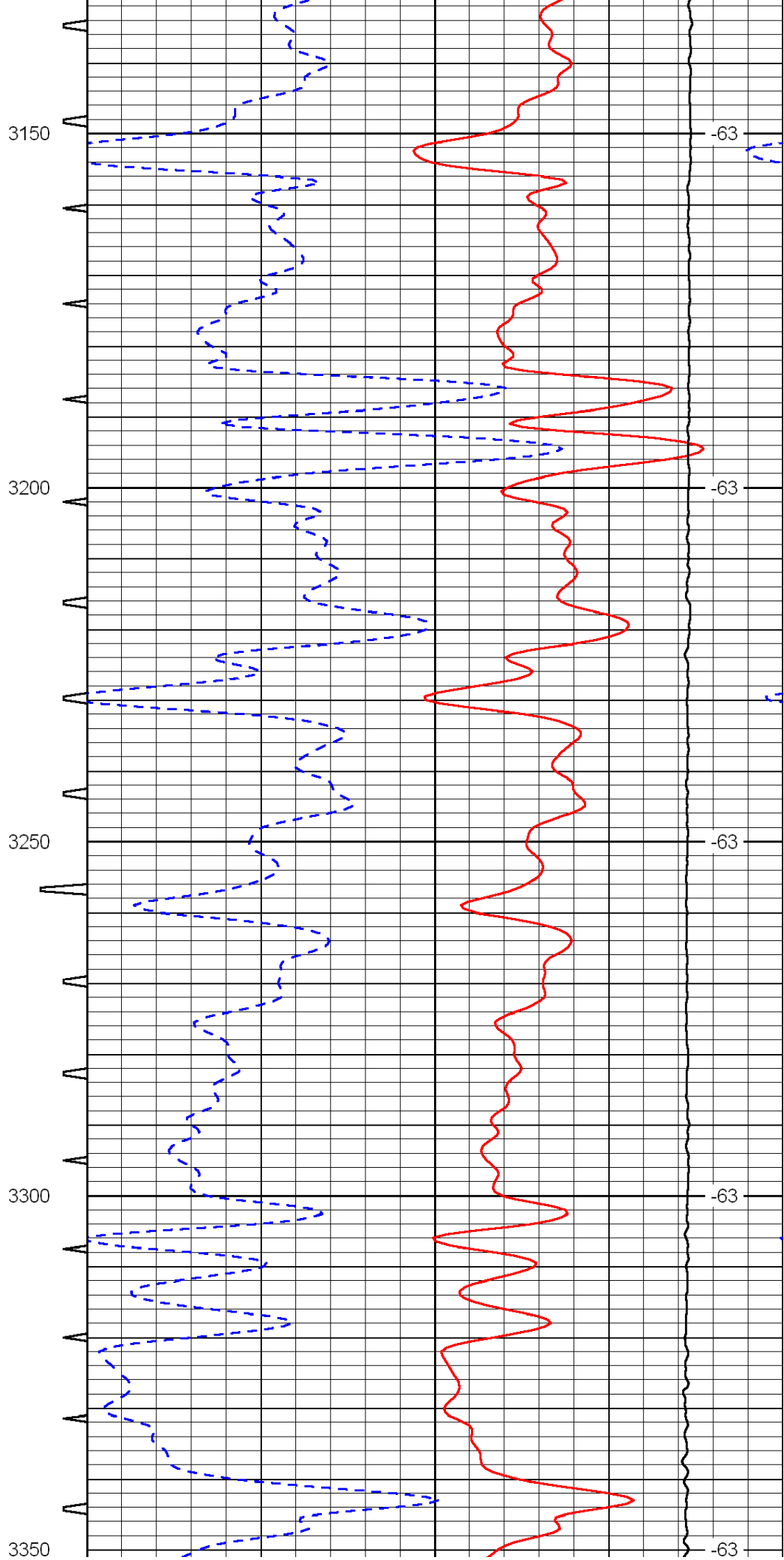
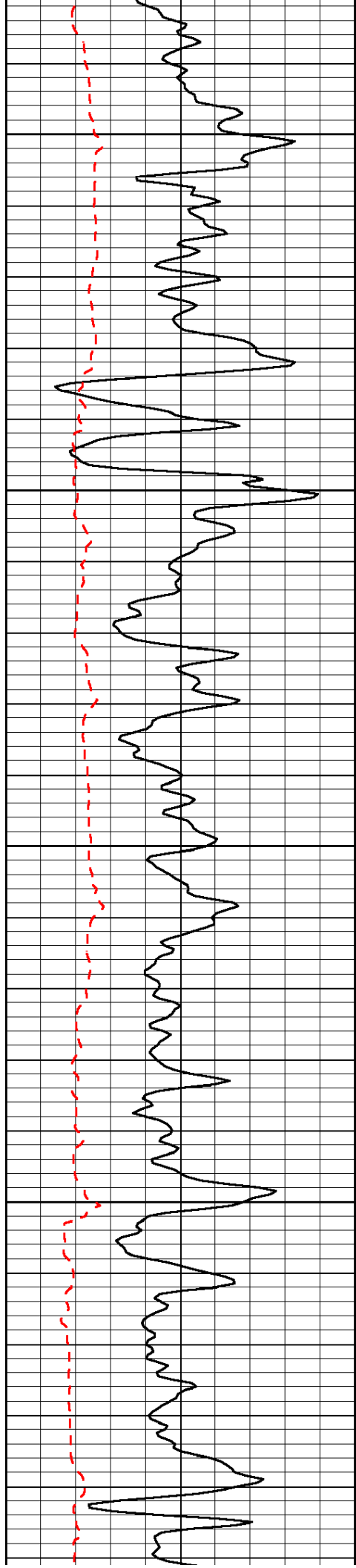


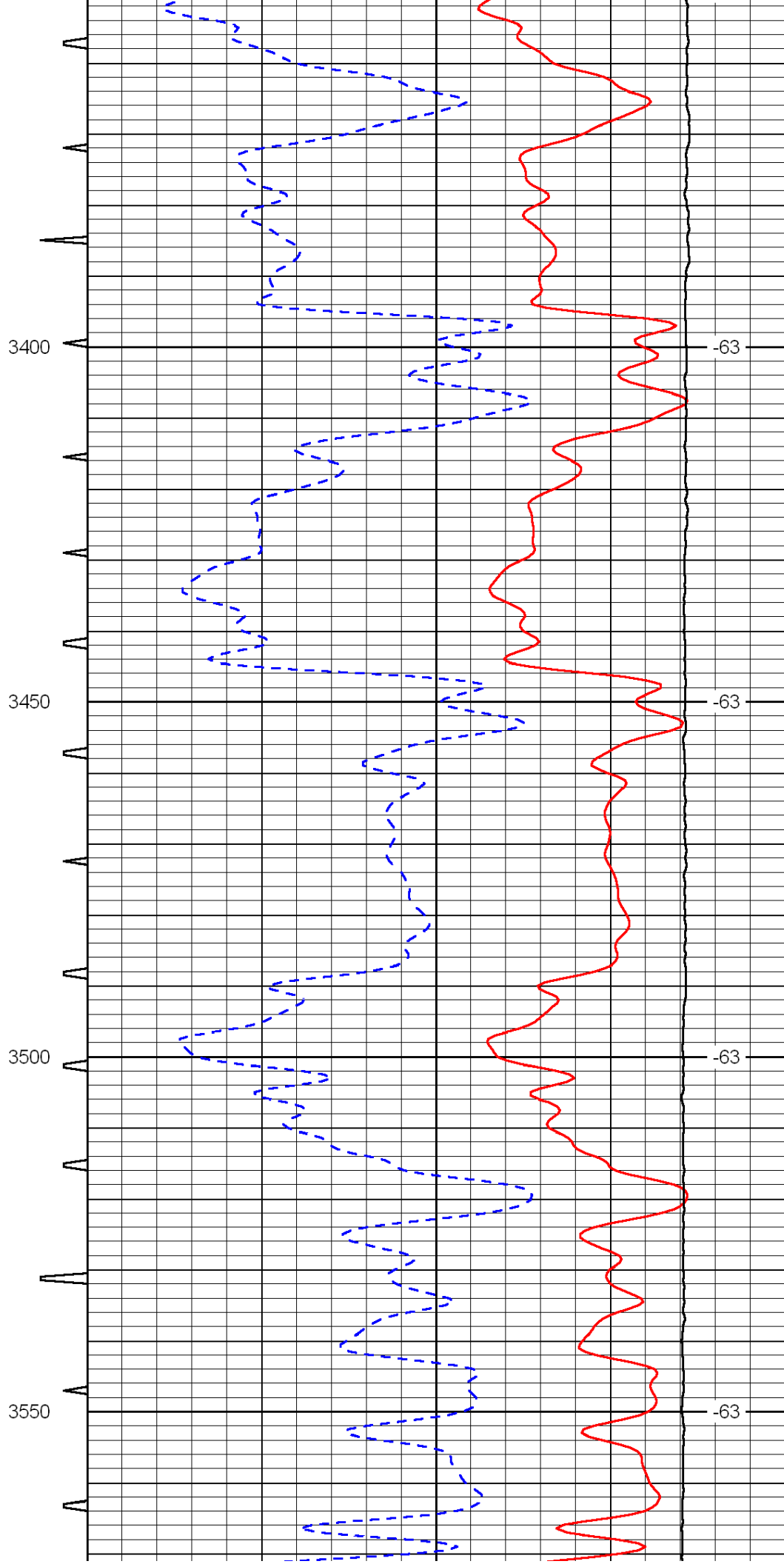
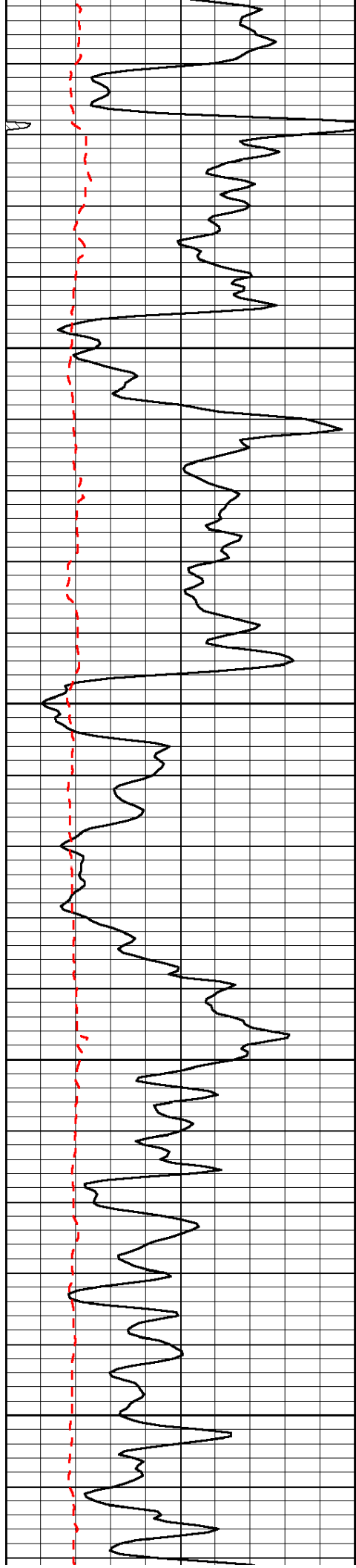


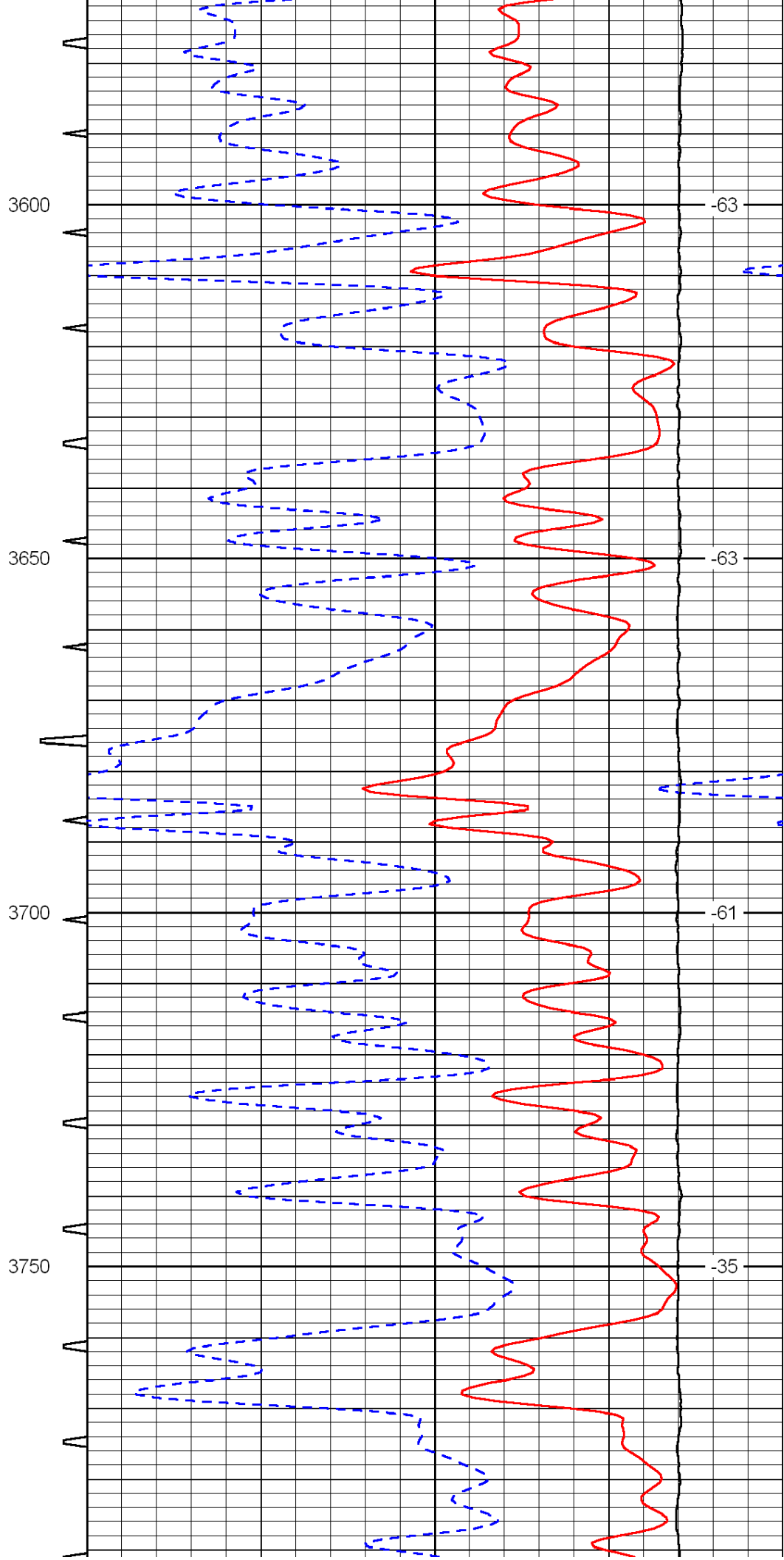
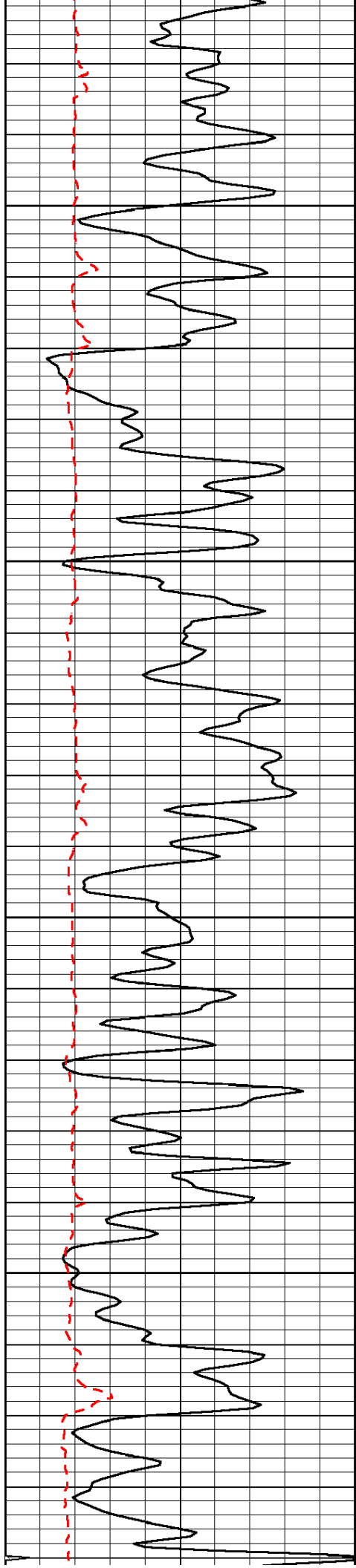


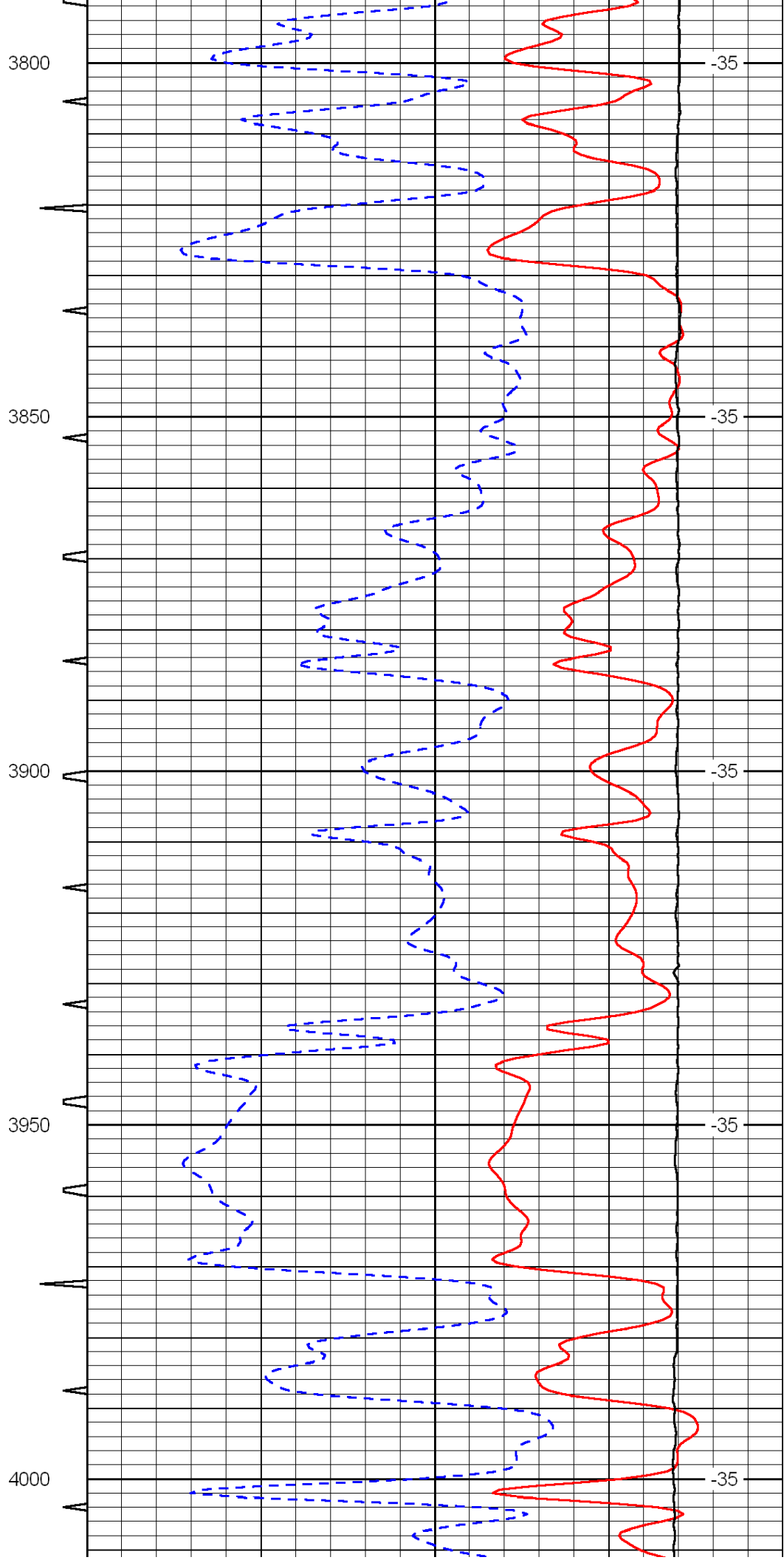
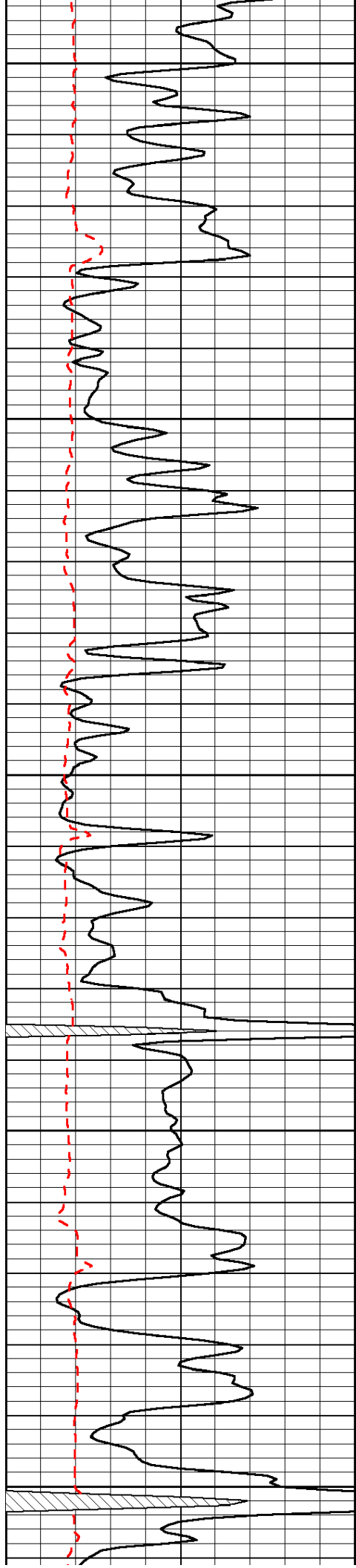


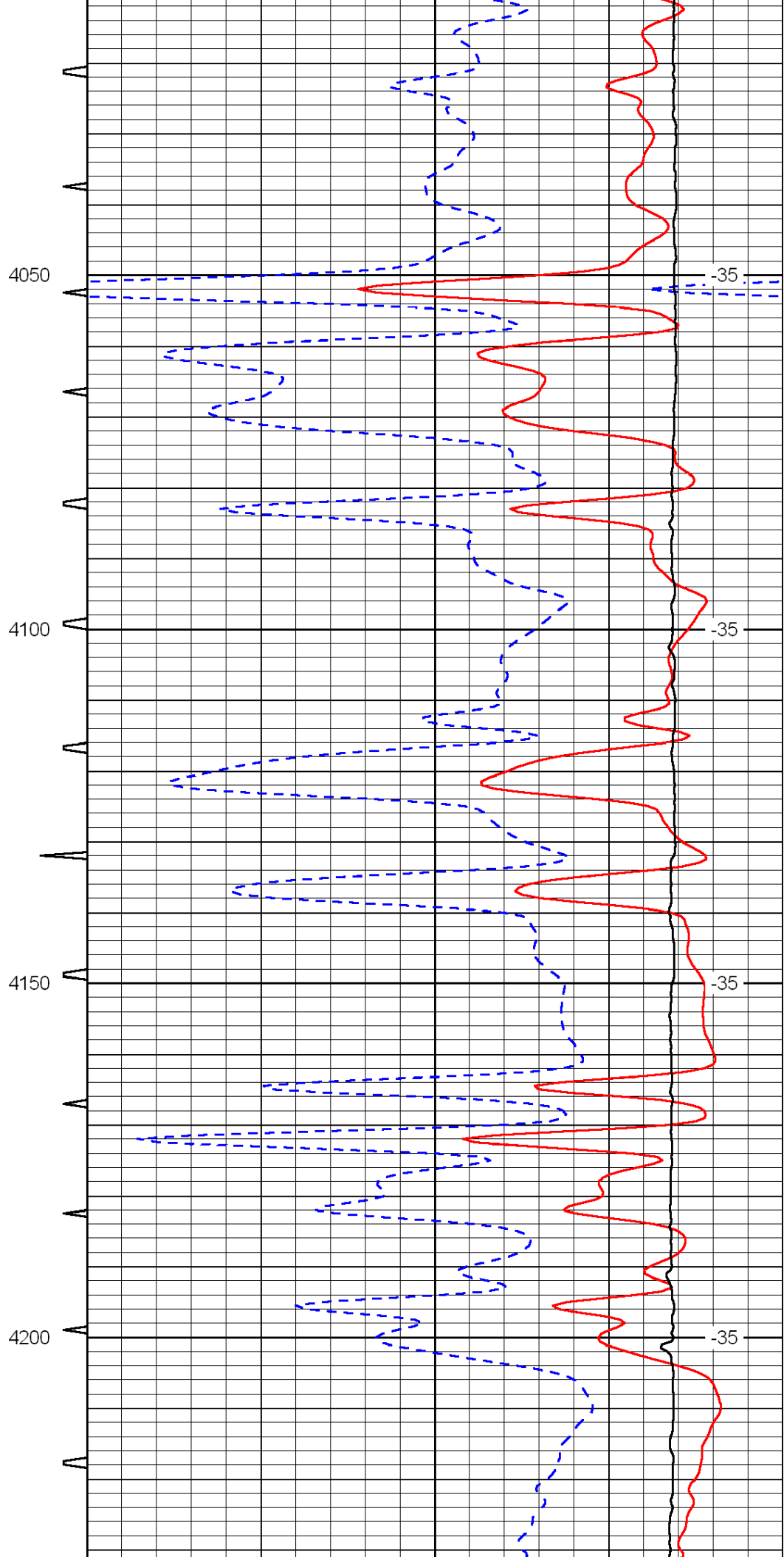
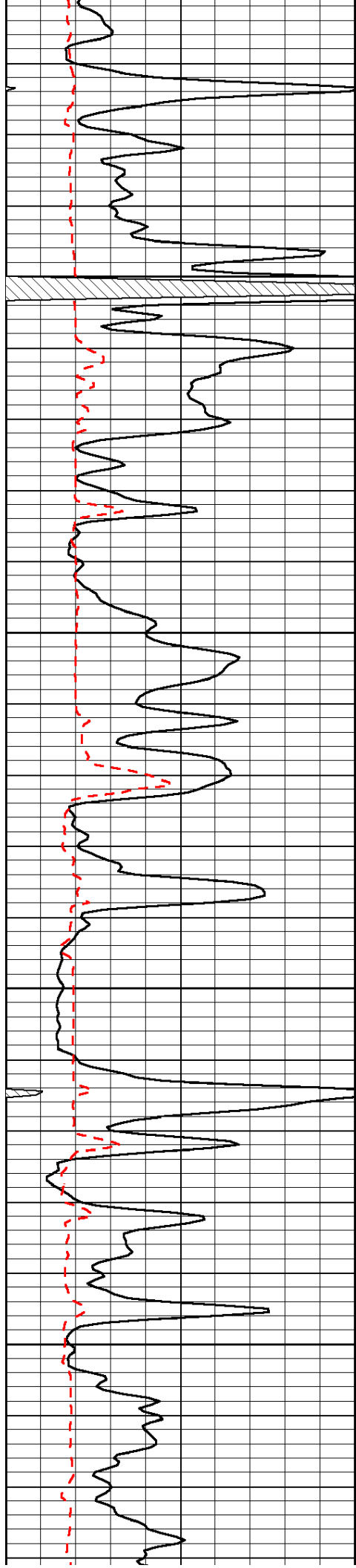


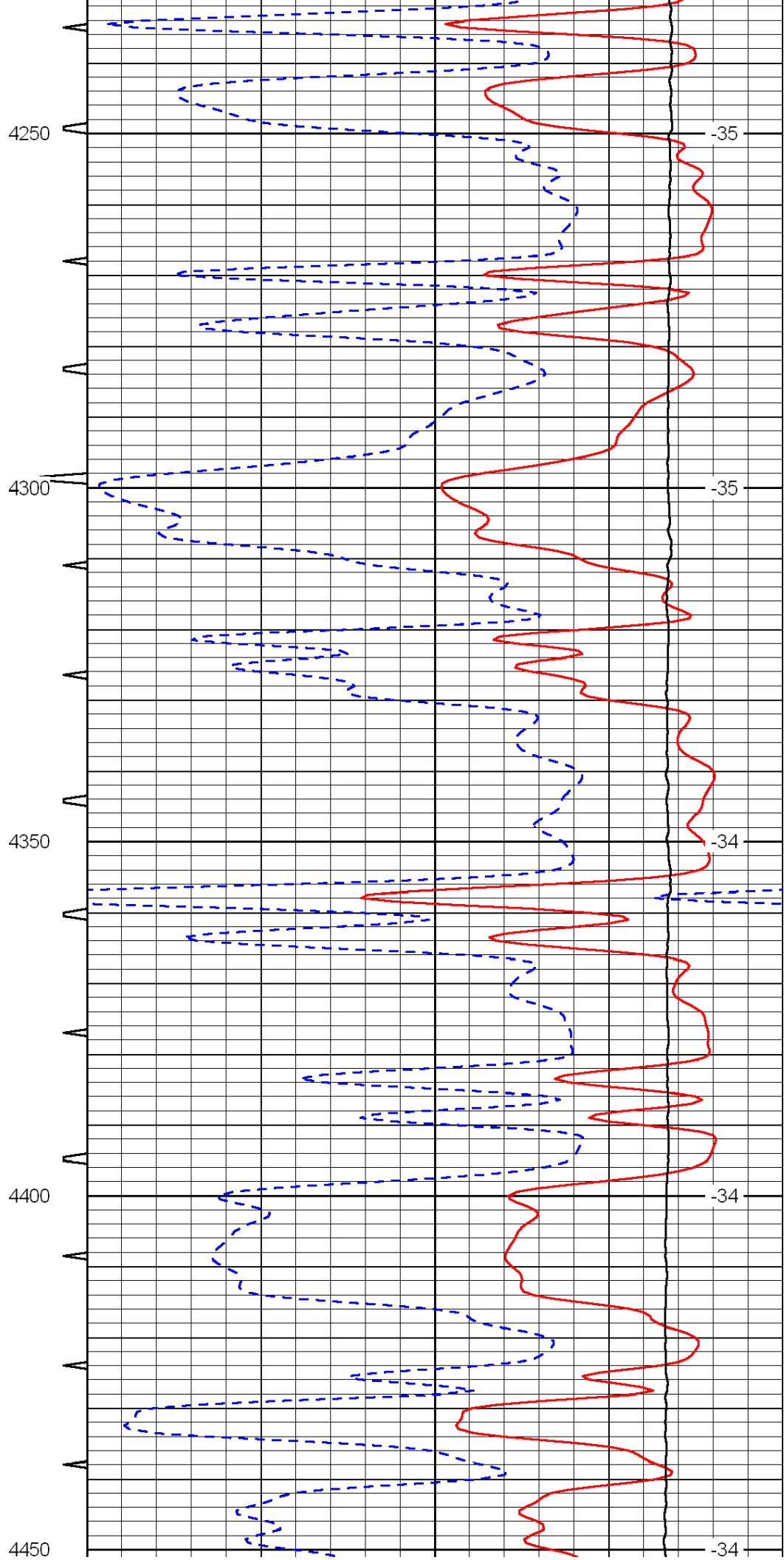
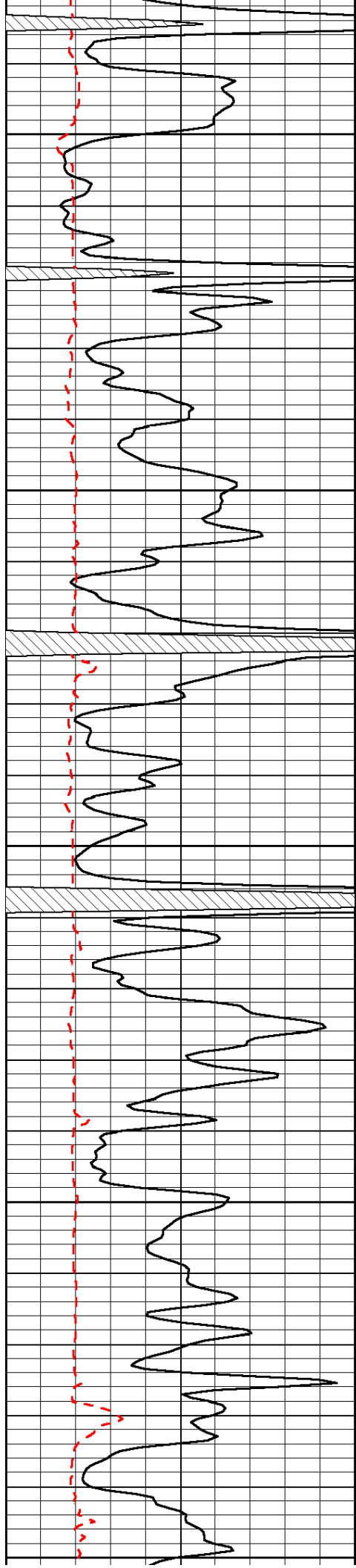


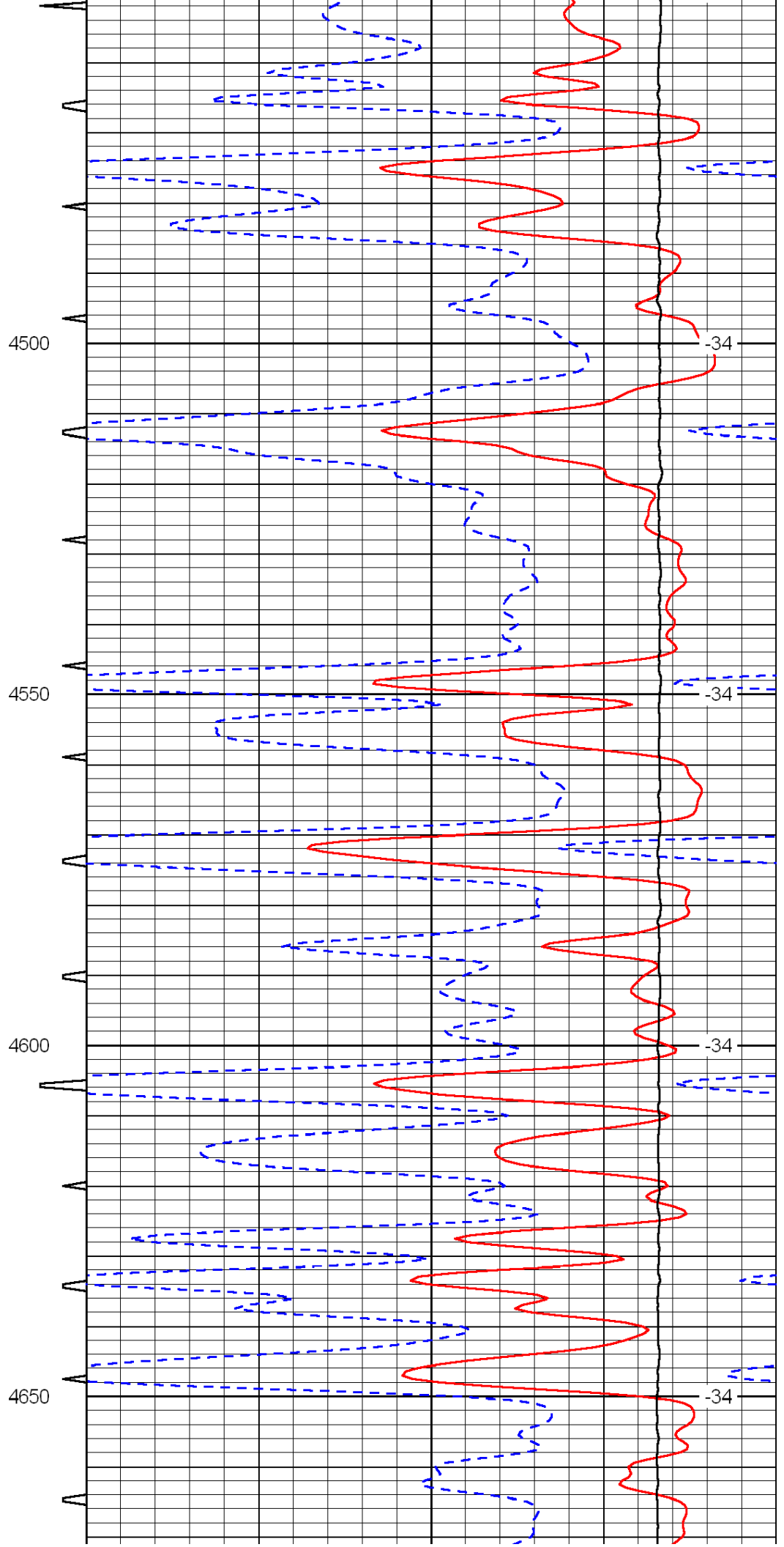
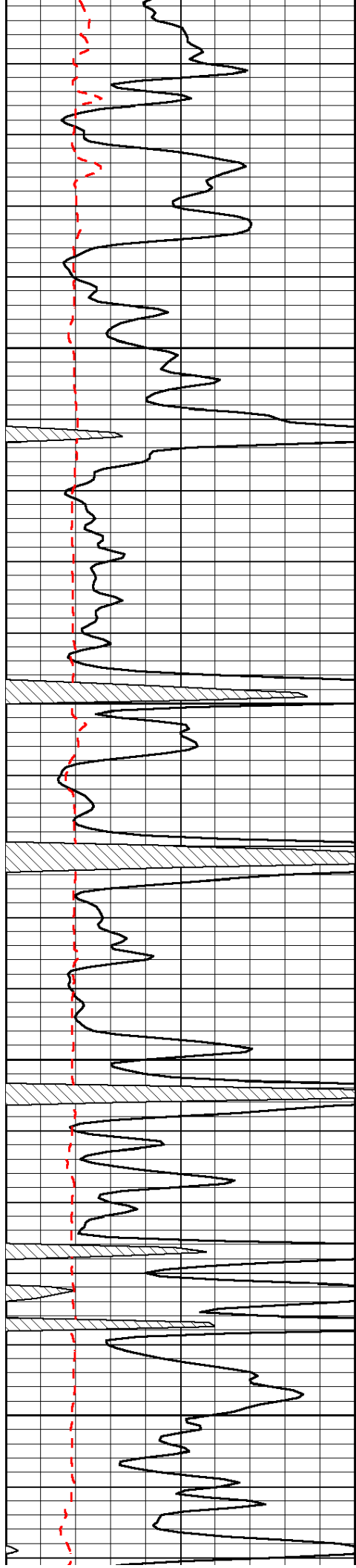


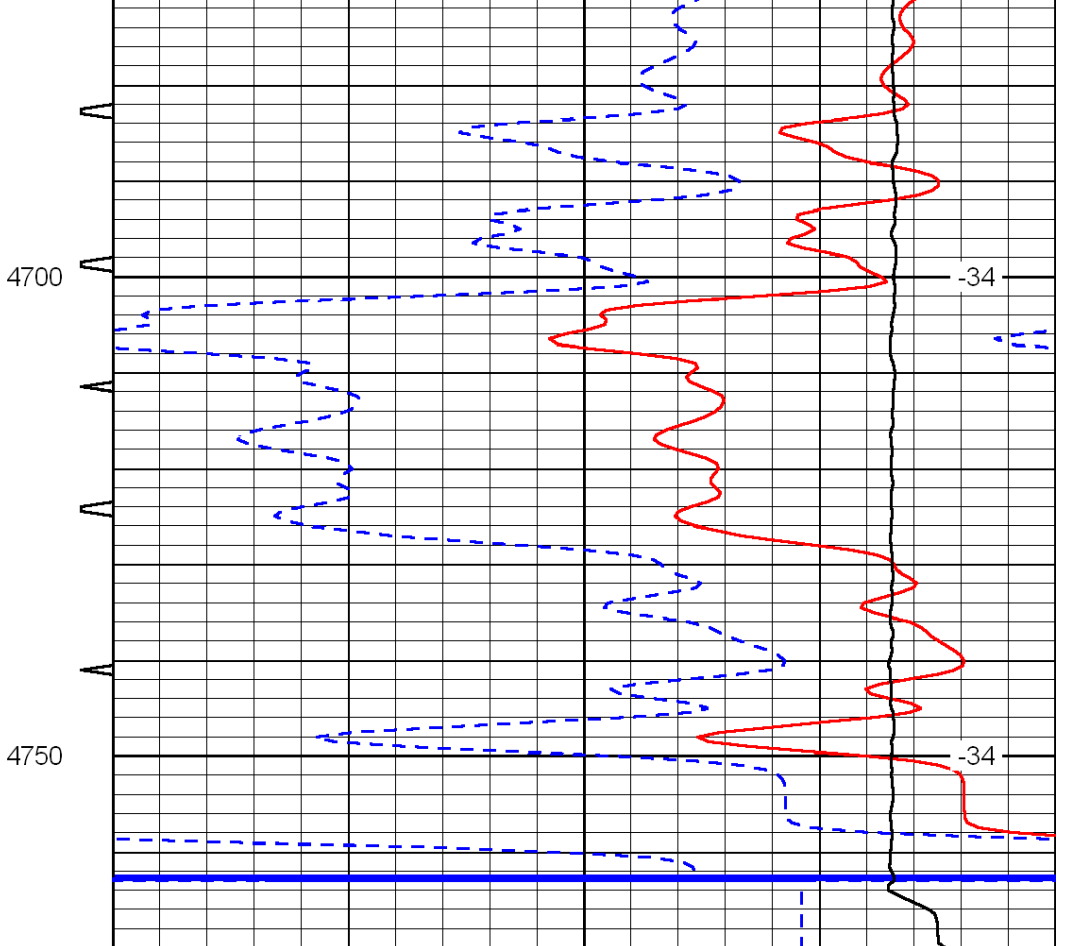
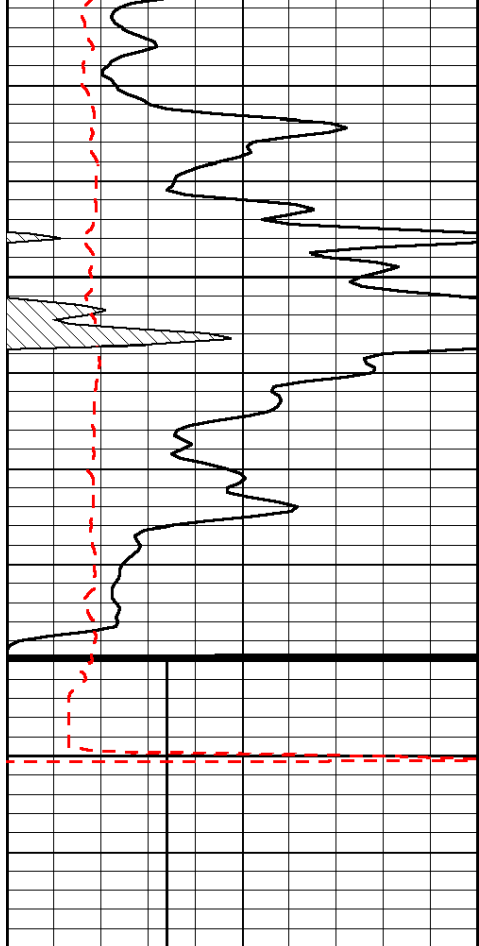












0	Gamma Ray	150
150	Gamma Ray	300
6	Caliper (GAPI)	16

Sonic Int	140	Delta Time (usec/ft)	40
5	0	SPOR	-10
	30	LTEN (lb)	0
	15000		

LSPD