



**Borehole Compensated
Sonic Log**

DIGITAL LOG (785) 625-3858

API No.	15-083-21,666-00-00
Company	American Warrior, Inc.
Well	Miner "C" No. 5-13
Field	Stairrett
County	Hodgeman
State	Kansas
Location	NW SW NE SW 1,793' FSL & 1,485' FWL
Sec: 13	Twp: 21S Rge: 25W
Other Services	CNL/CDL MEL/DIL

Permanent Datum	Ground Level	Elevation 2355
Log Measured From	Kelly Bushing	11 Ft. Above Perm. Datum
Drilling Measured From	Kelly Bushing	
Date	8/23/2010	K.B. 2366 D.F. 2355 G.L. 2355

Run Number	Two
Type Log	BHC Sonic
Depth Driller	4552
Depth Logger	4554
Bottom Logged Interval	4543
Top Logged Interval	200
Type Fluid In Hole	Chemical
Salinity, PPM CL	8500
Density	9.4
Level	Full
Max. Rec. Temp. F	122
Operating Rig Time	4 1/2 Hours
Equipment -- Location	10 Hays
Recorded By	J. Long
Witnessed By	Jim Musgrove

Borehole Record				Casing Record			
Run No.	Bit	From	To	Size	Wgt.	From	To
1	12.25	00	222	8.625	24#	00	222
2	7.875	222	4552				

<<< Fold Here >>>

All interpretations are opinions based on inferences from electrical or other measurements and we cannot and do not guarantee the accuracy or correctness of any interpretation, and we shall not, except in the case of gross or willful negligence on our part, be liable or responsible for any loss, costs, damages, or expenses incurred or sustained by anyone resulting from any interpretation made by any of our officers, agents or employees. These interpretations are also subject to our general terms and conditions set out in our current Price Schedule.

Comments

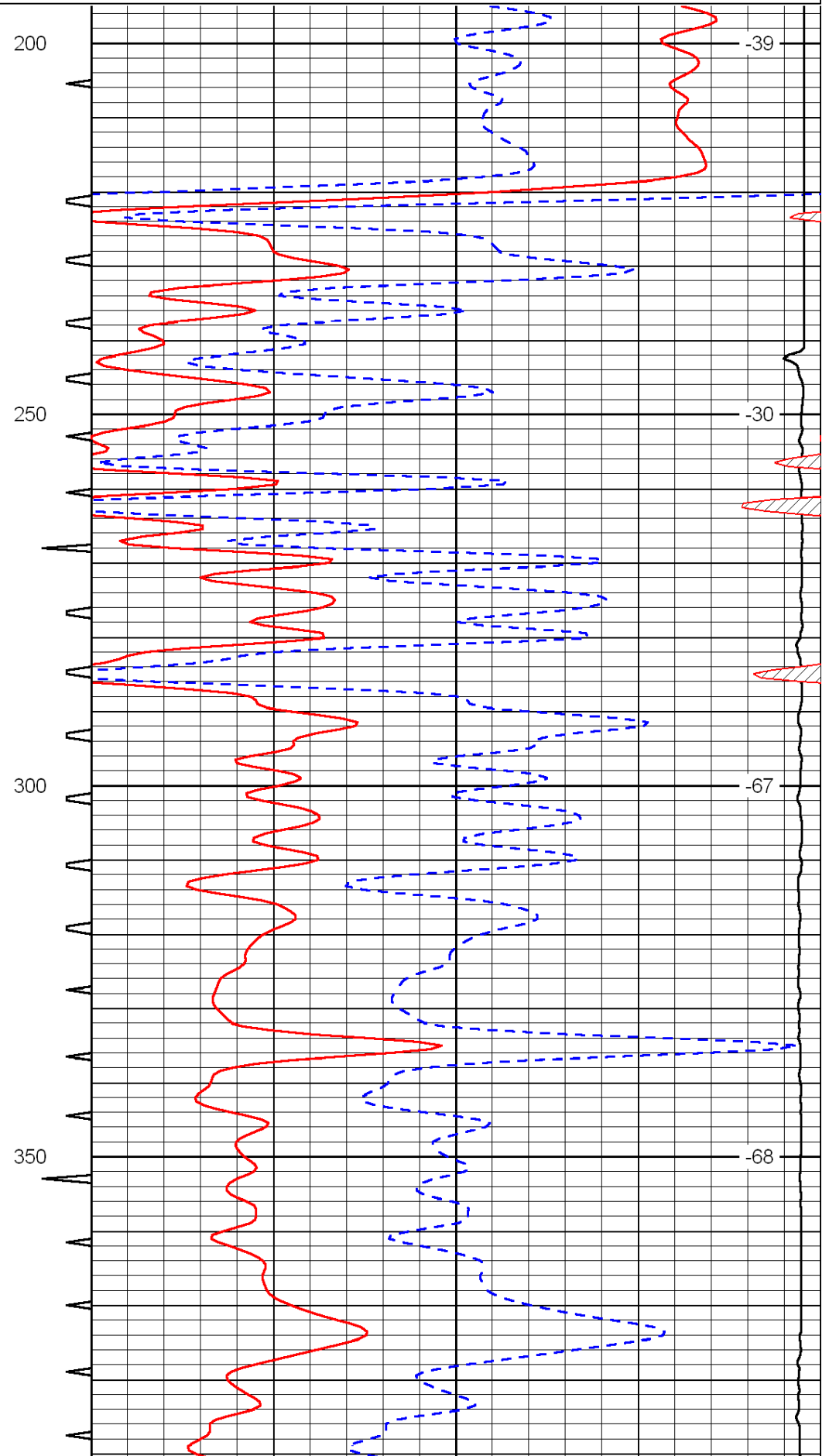
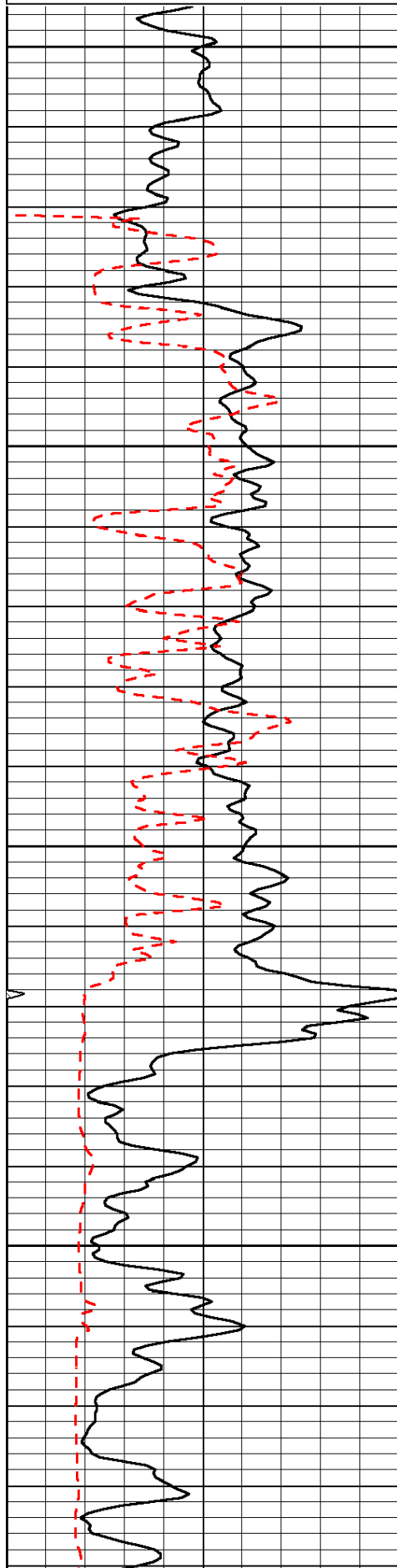
Thank you for using Log-Tech, Inc.
(785) 625-3858

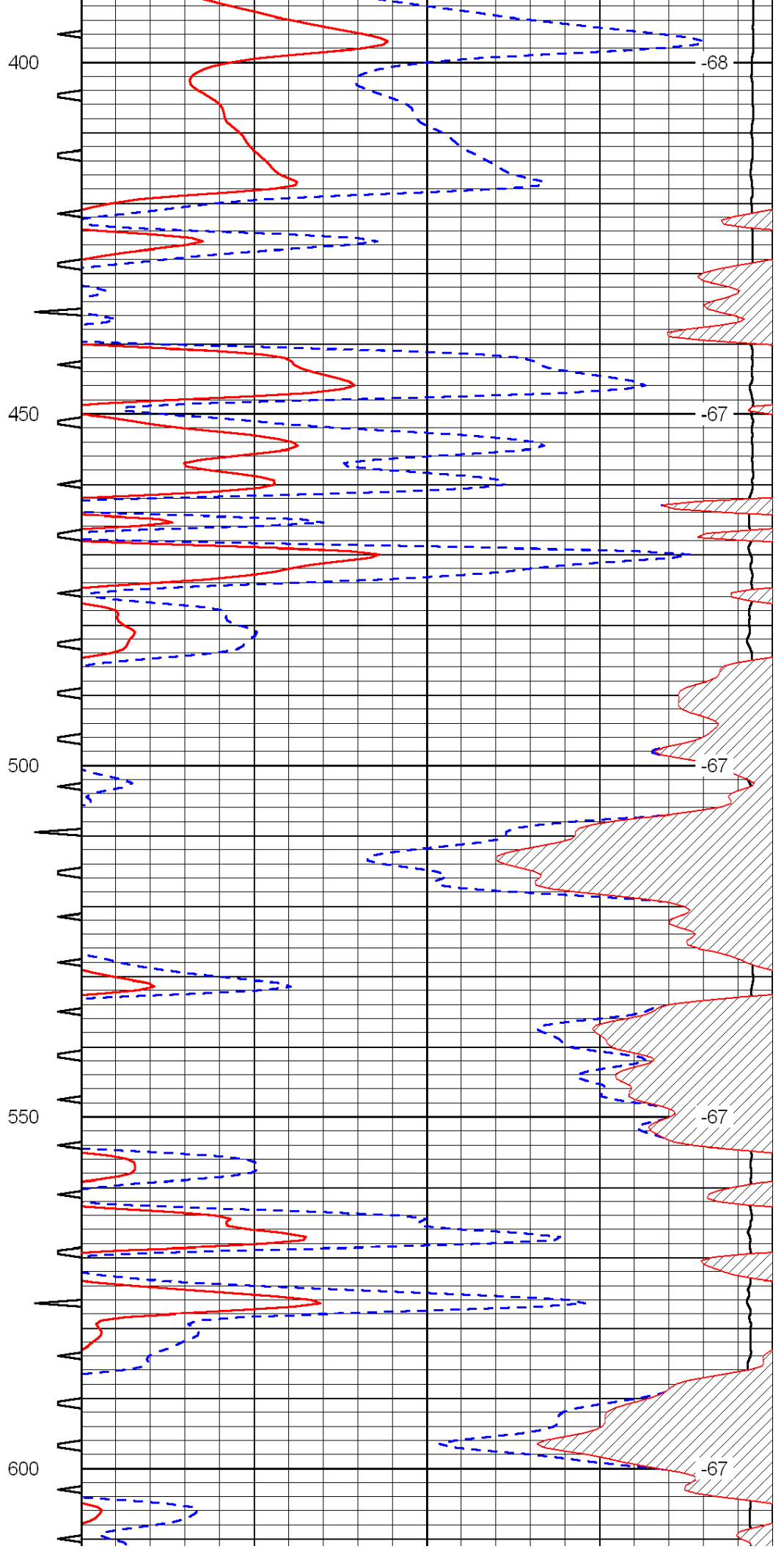
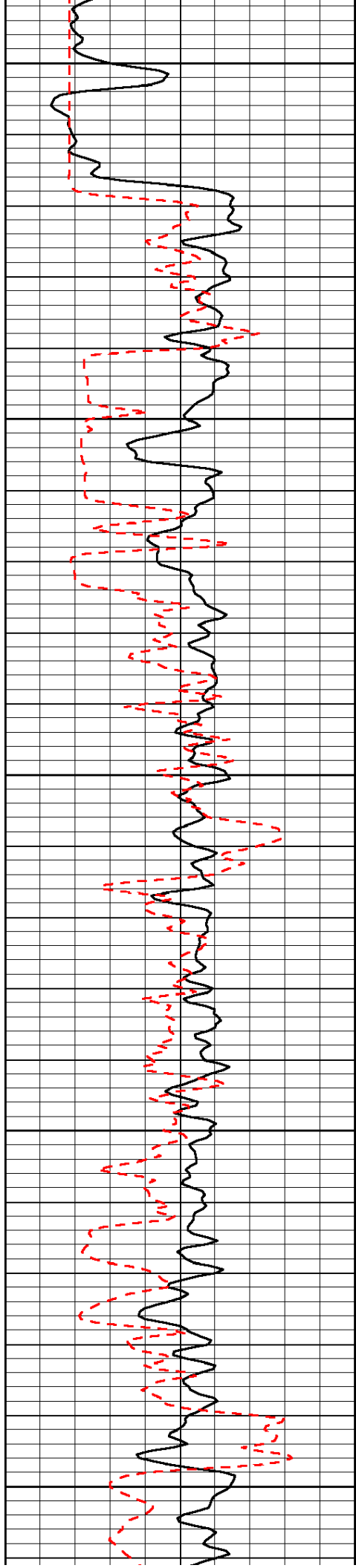
Jetmore, West to 210 Rd, 10 North to V Rd, 1 1/2 East, North Into

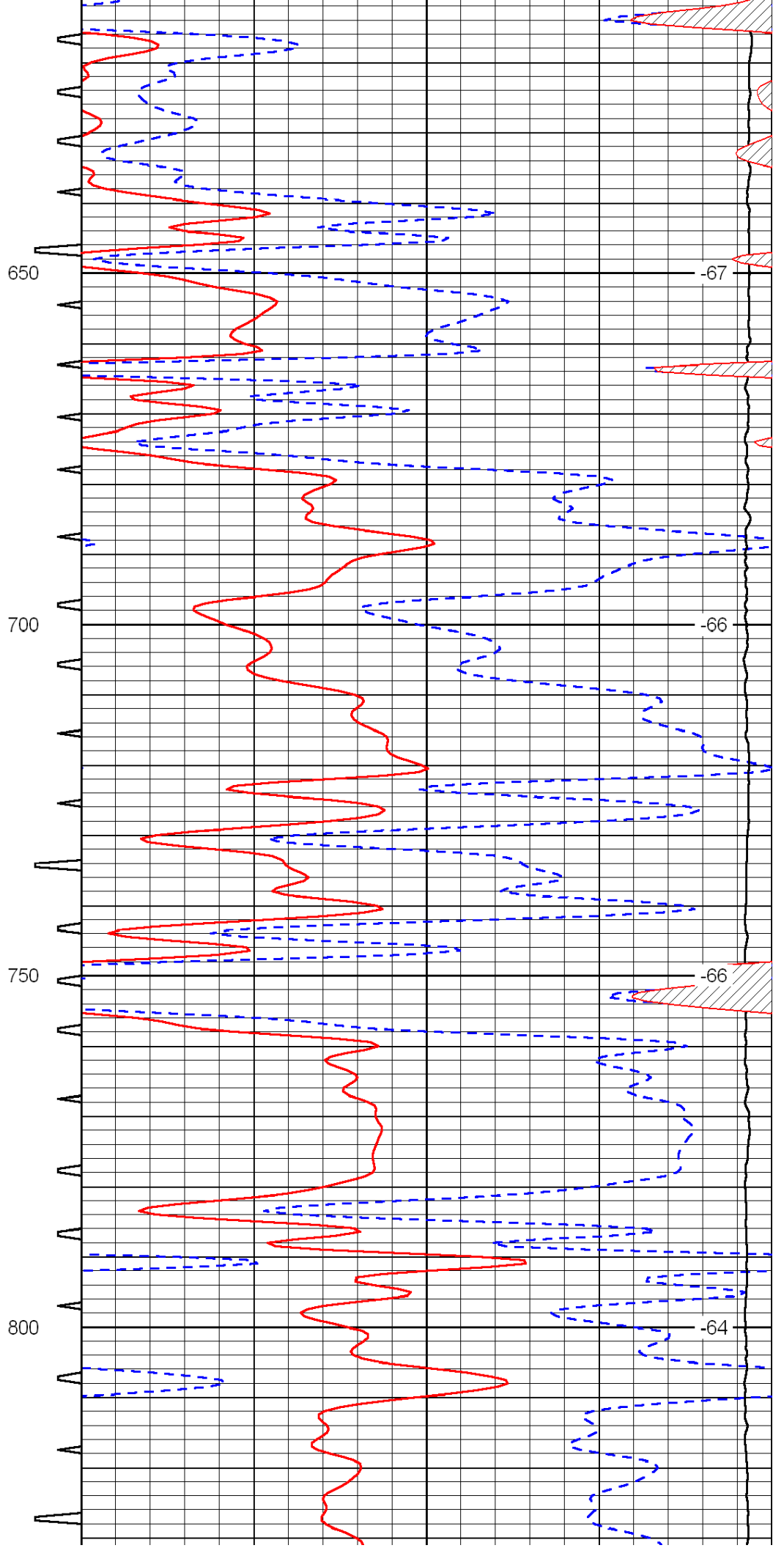
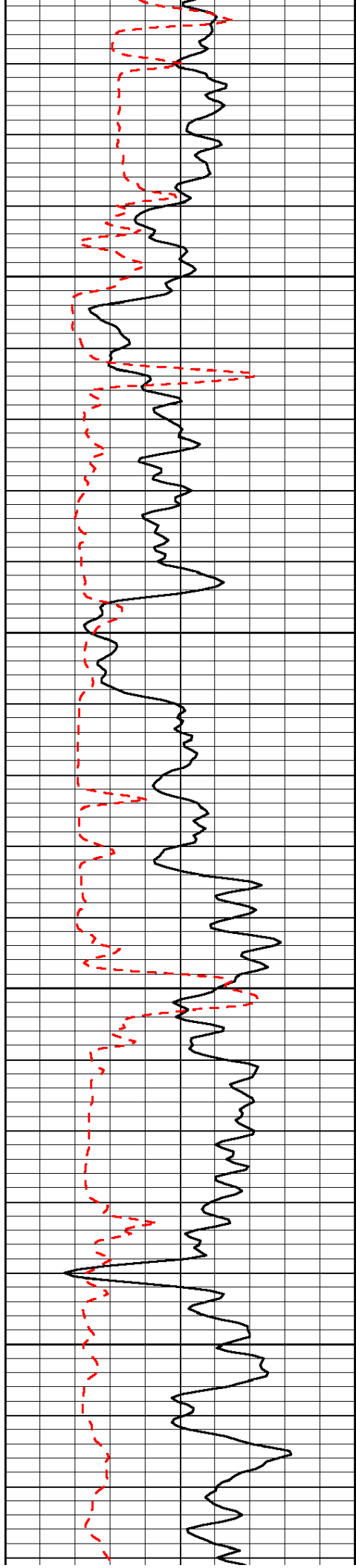
Database File: c:\warrior\data\amwar_miner c no. 5-13\amwarrhd.db
 Dataset Pathname: dil/awstck
 Presentation Format: sonic
 Dataset Creation: Mon Aug 23 08:41:24 2010
 Charted by: Depth in Feet scaled 1:240

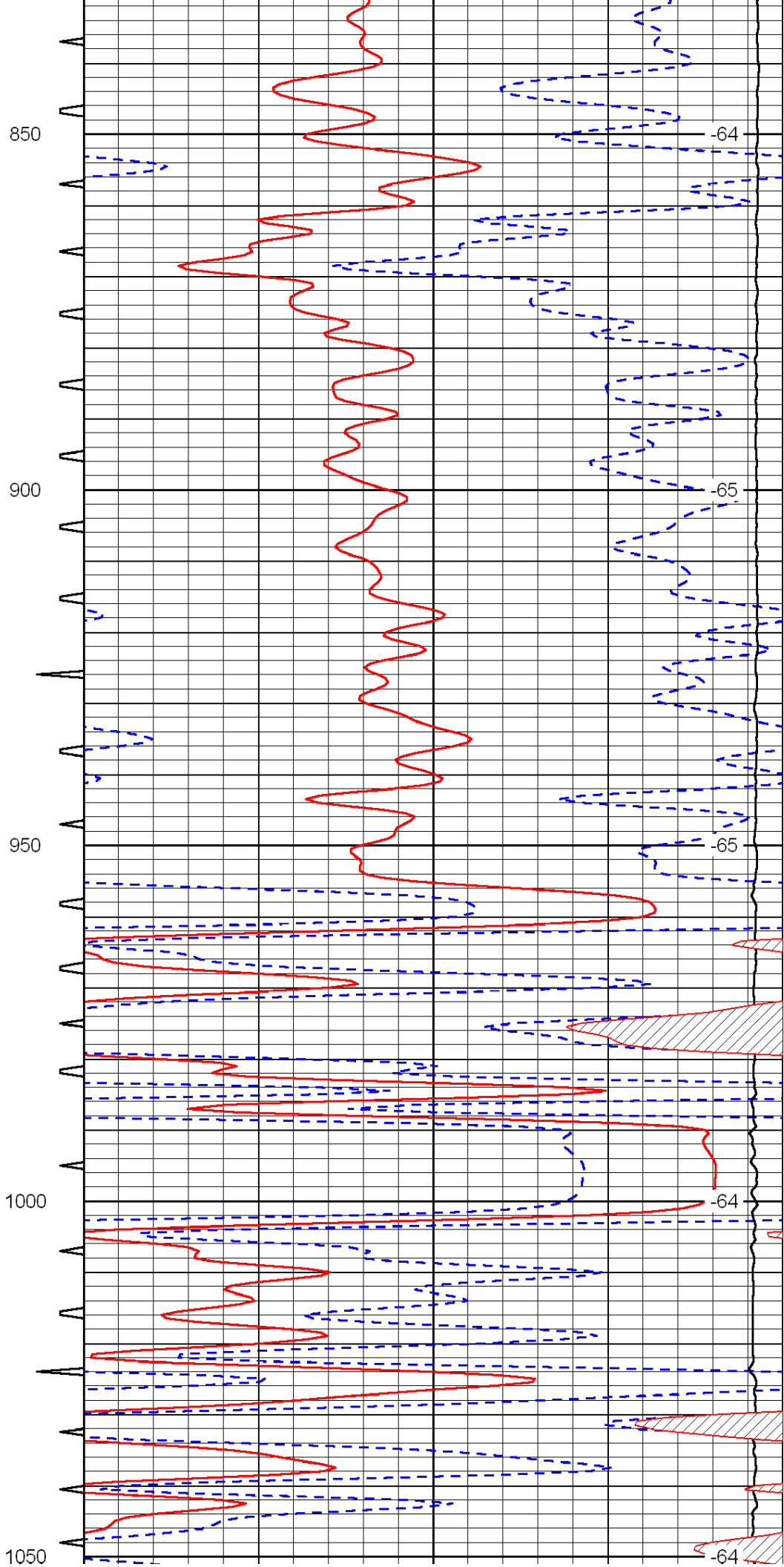
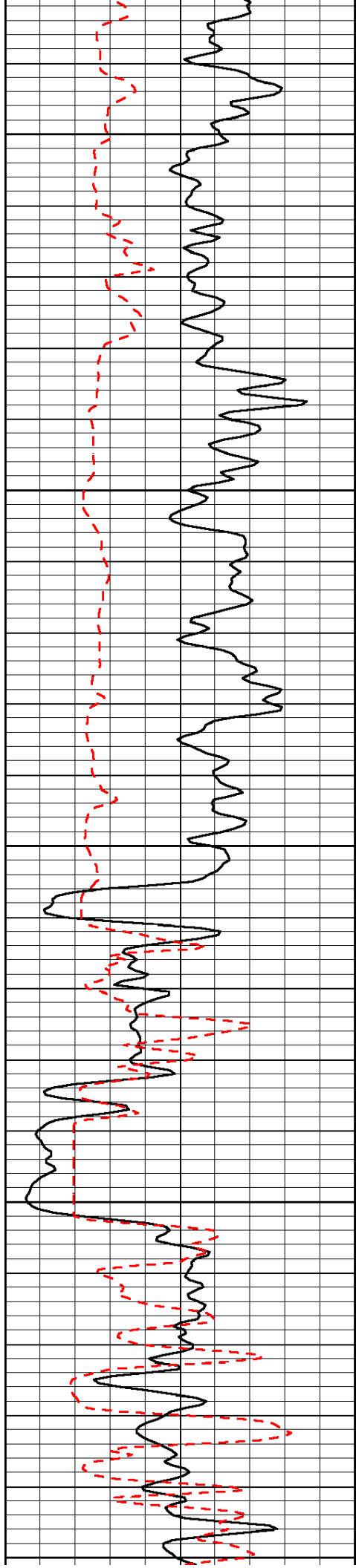
0	Gamma Ray	150	Sonic Int	140	Delta Time (usec/ft)	40
150	Gamma Ray	300	5	0	SPOR	-10
6	Caliper (GAPI)	16		15000	LTEN (lb)	0

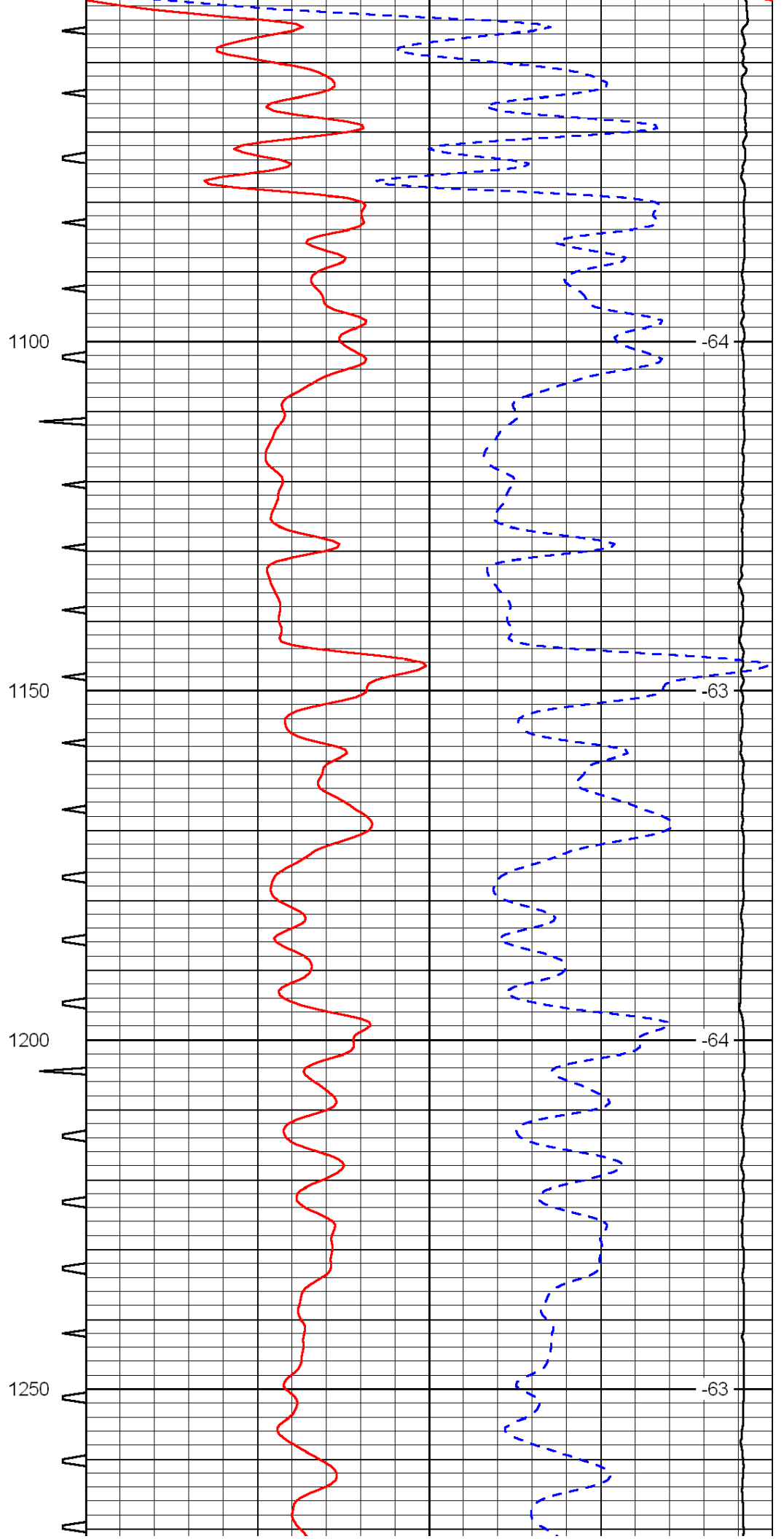
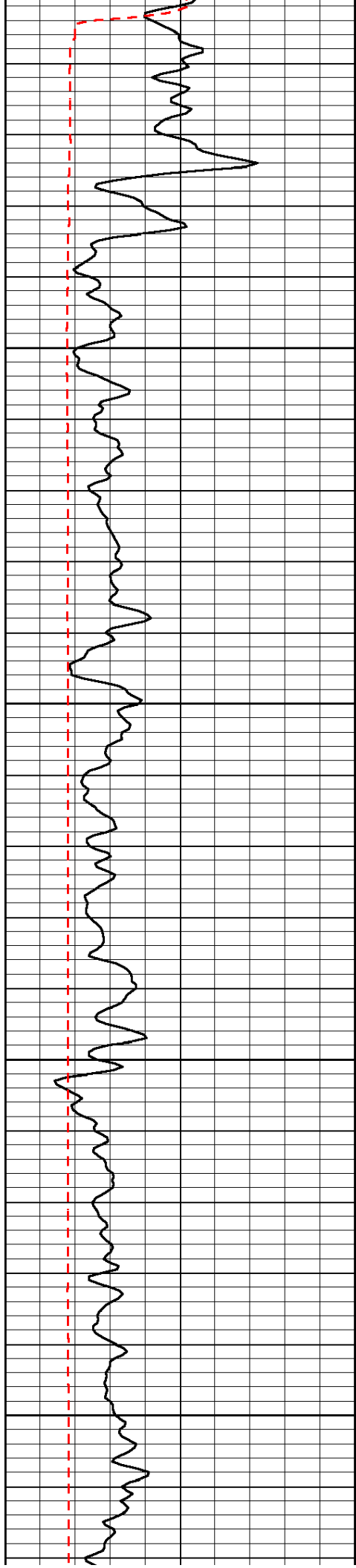
LSPD

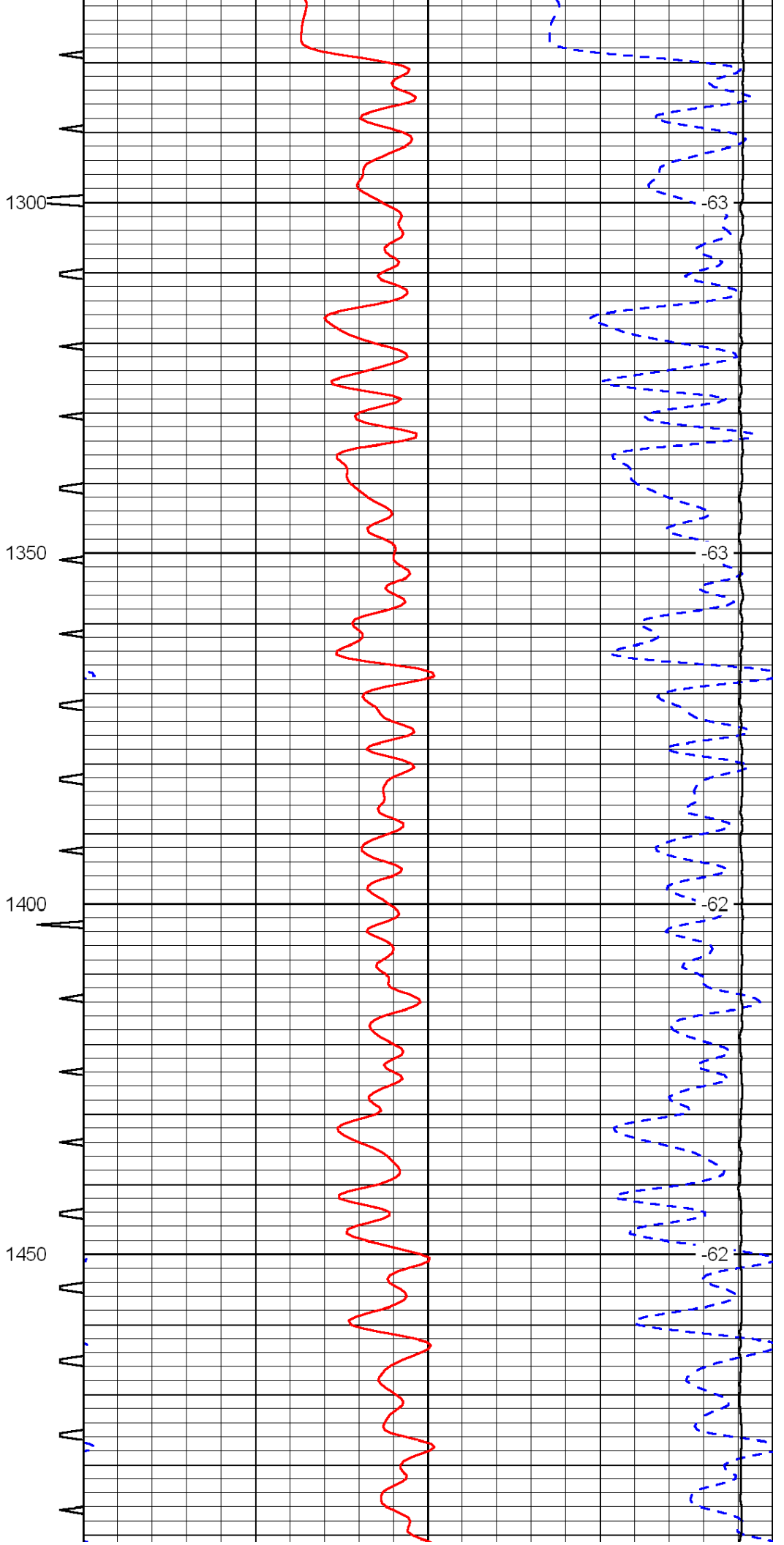
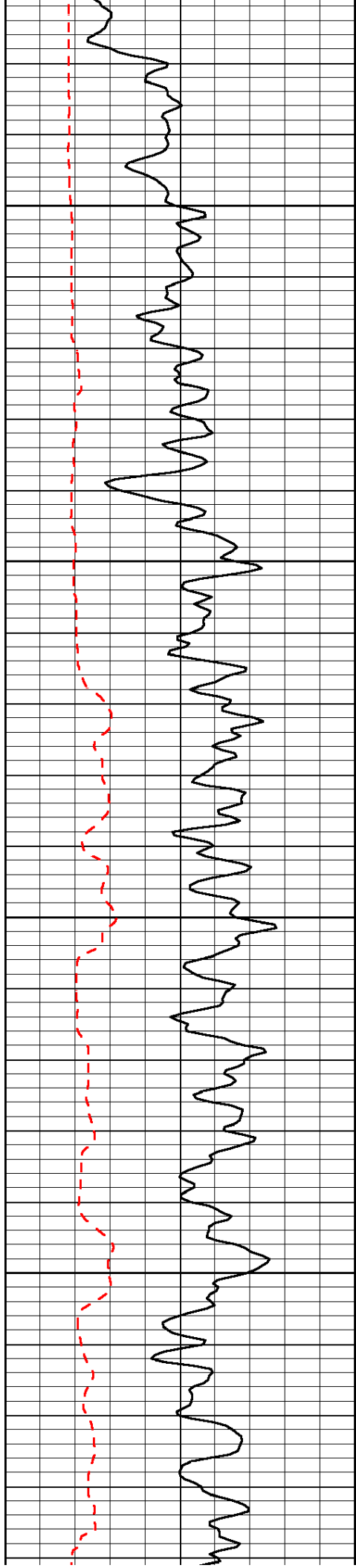


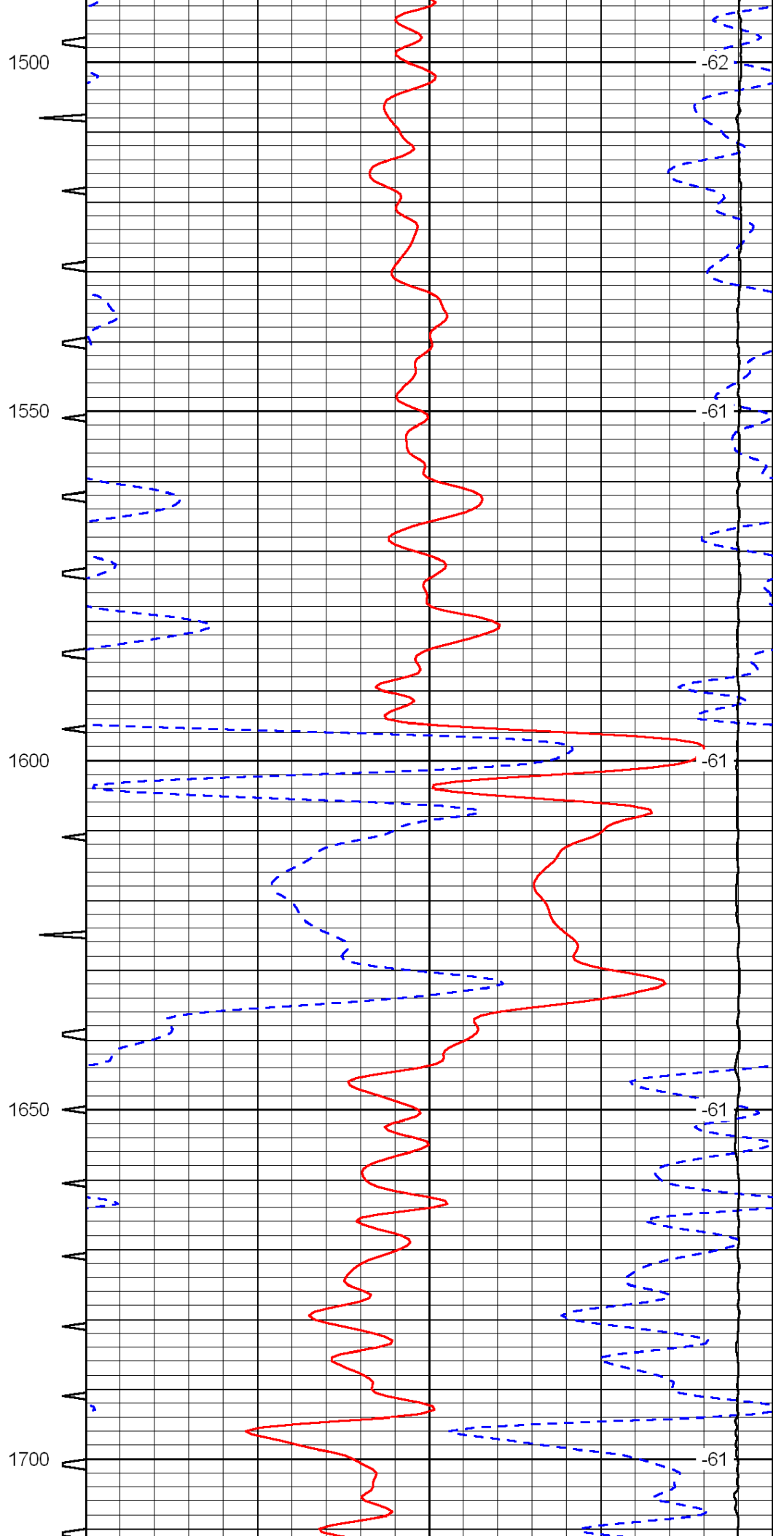
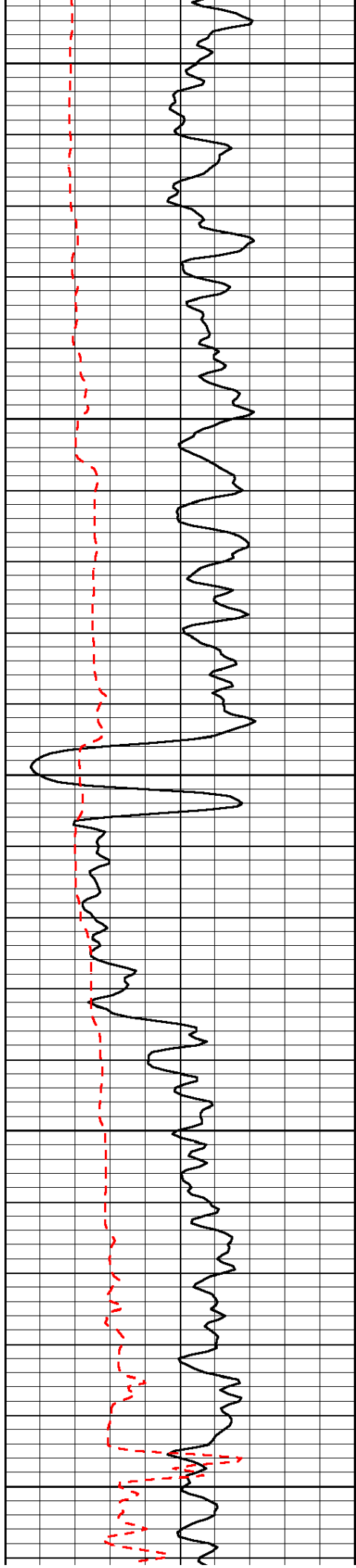


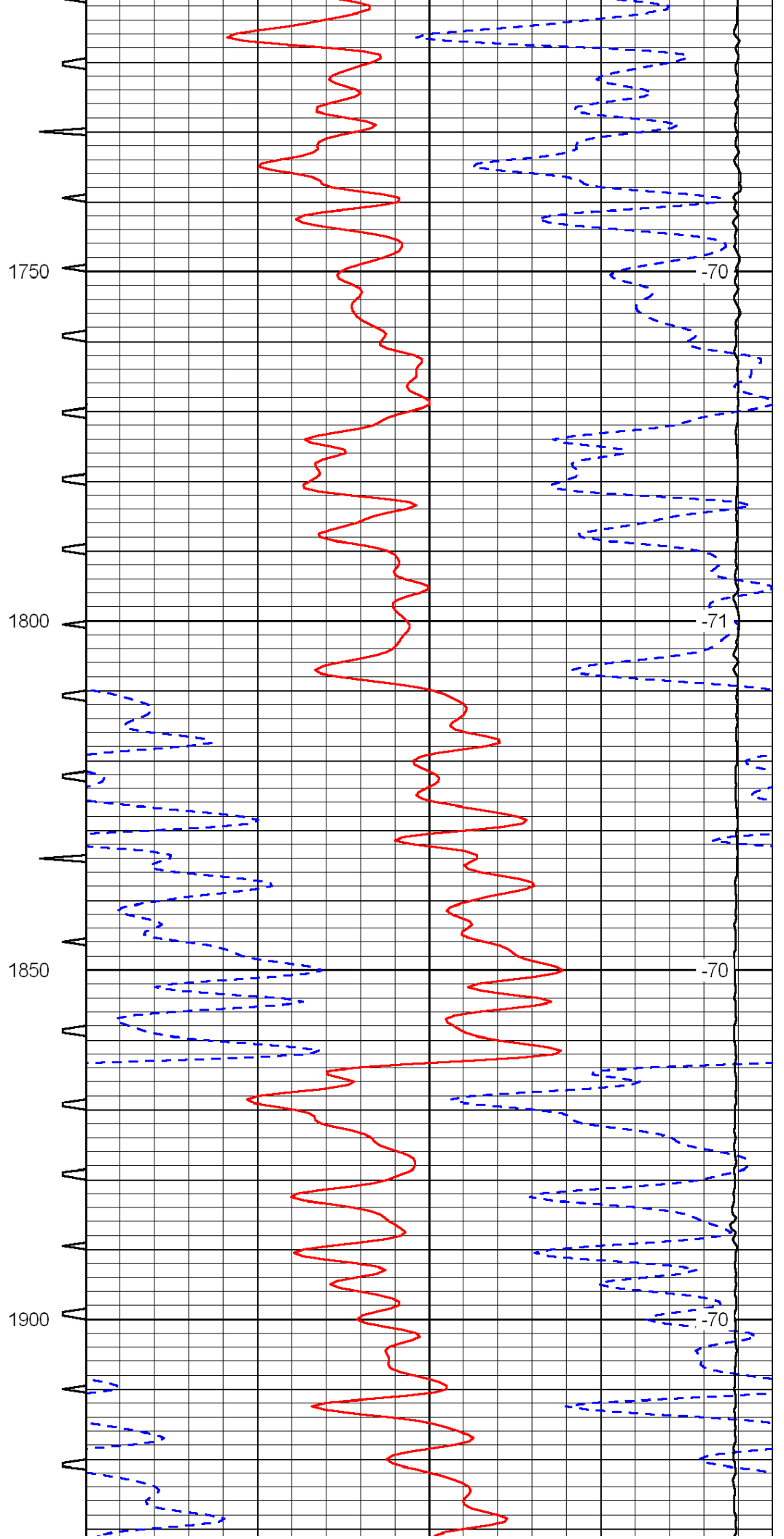
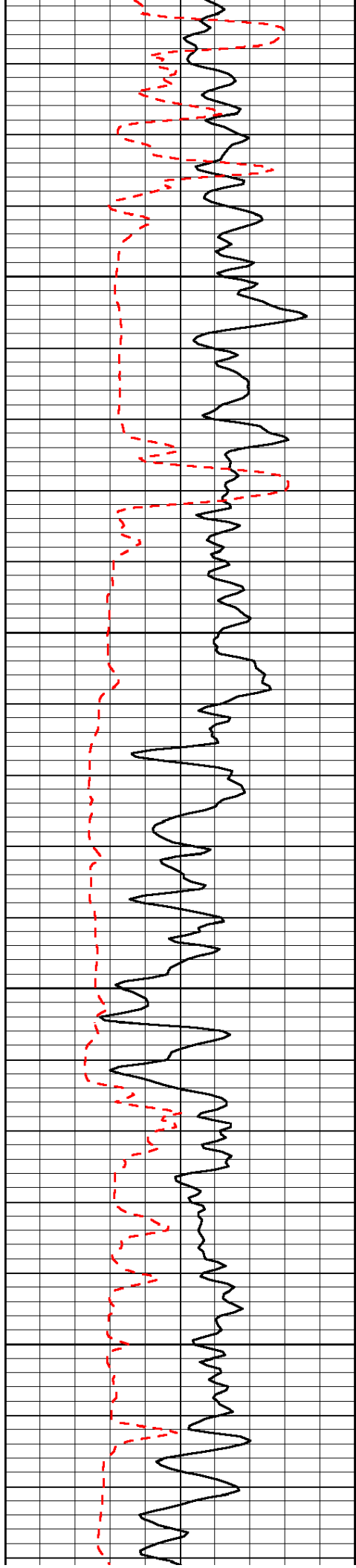


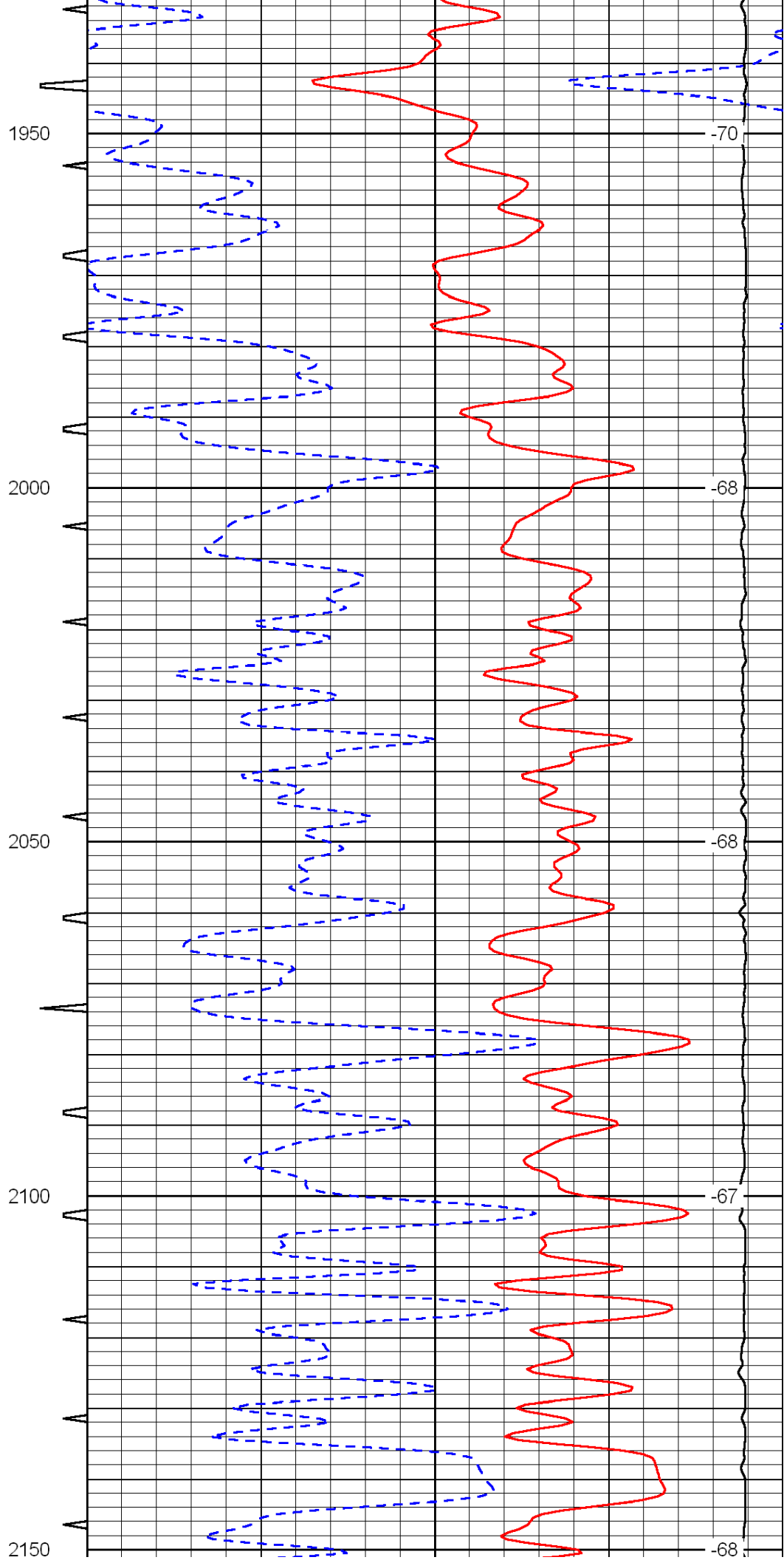
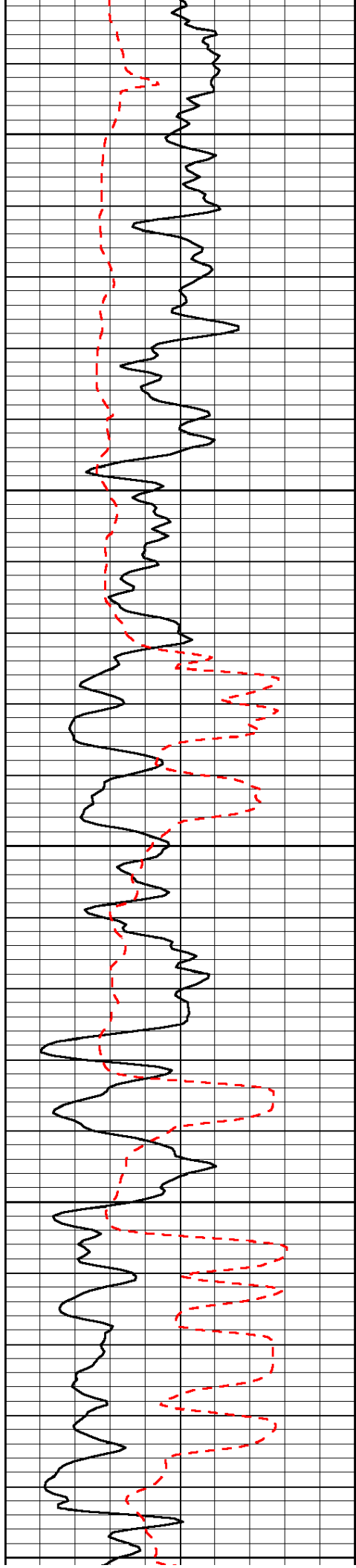


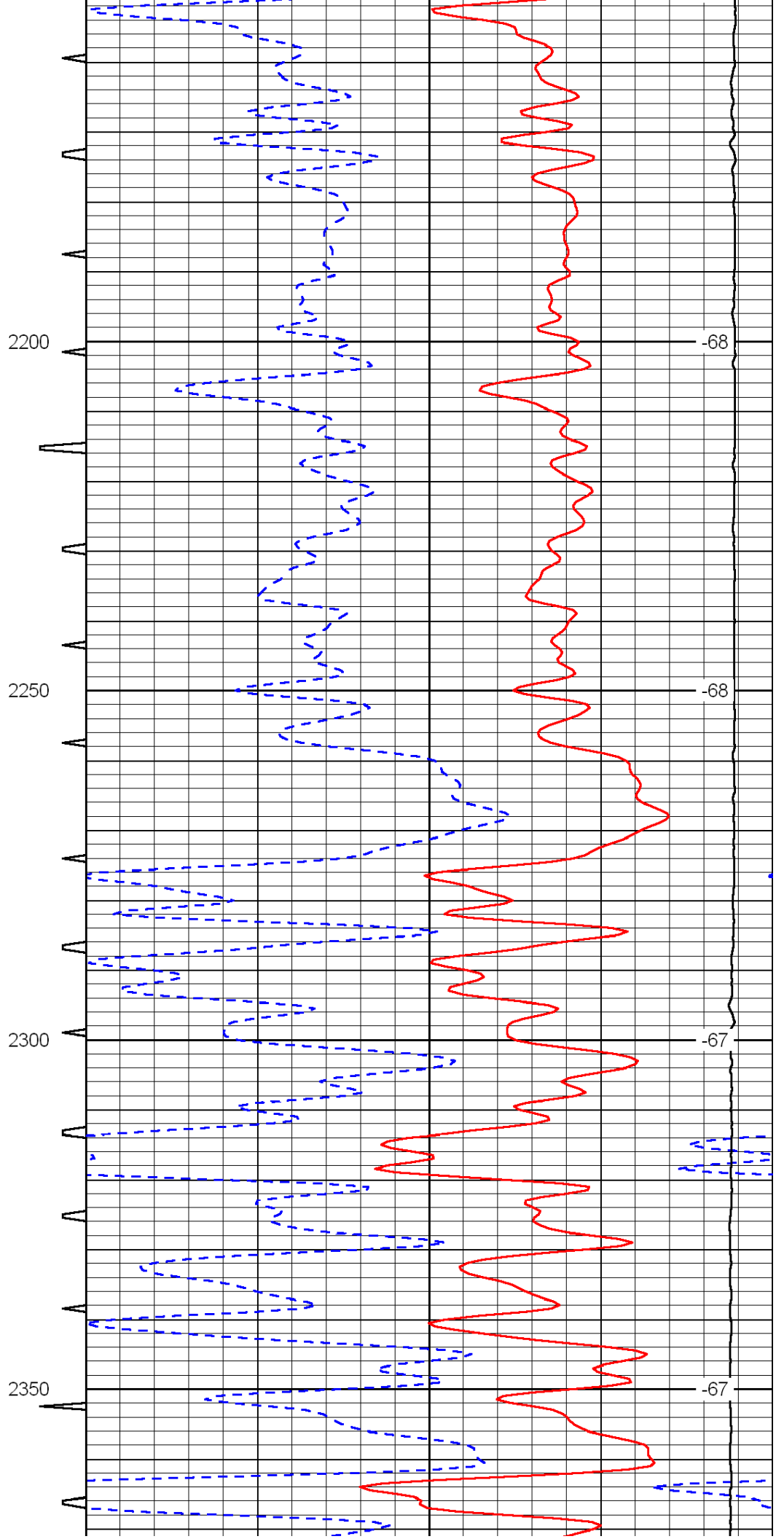
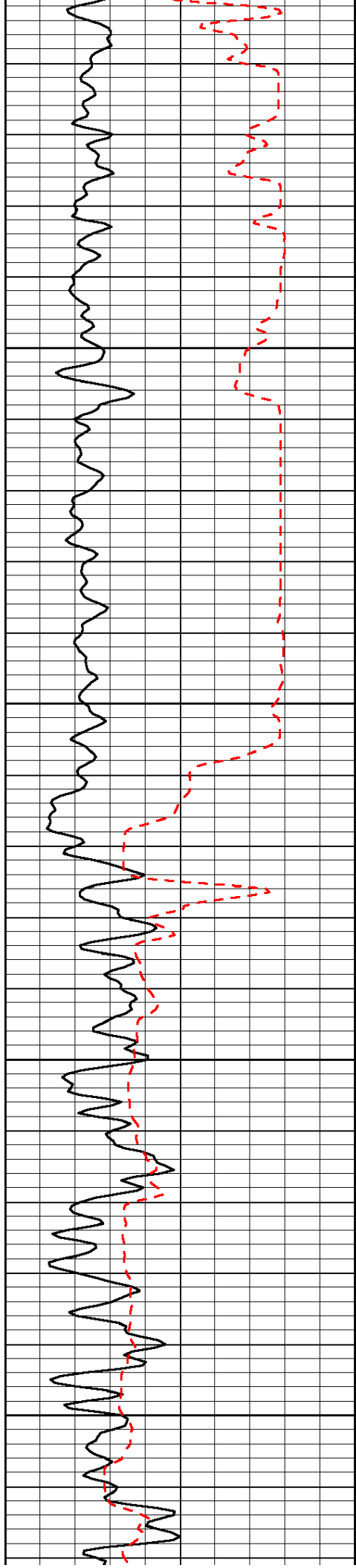


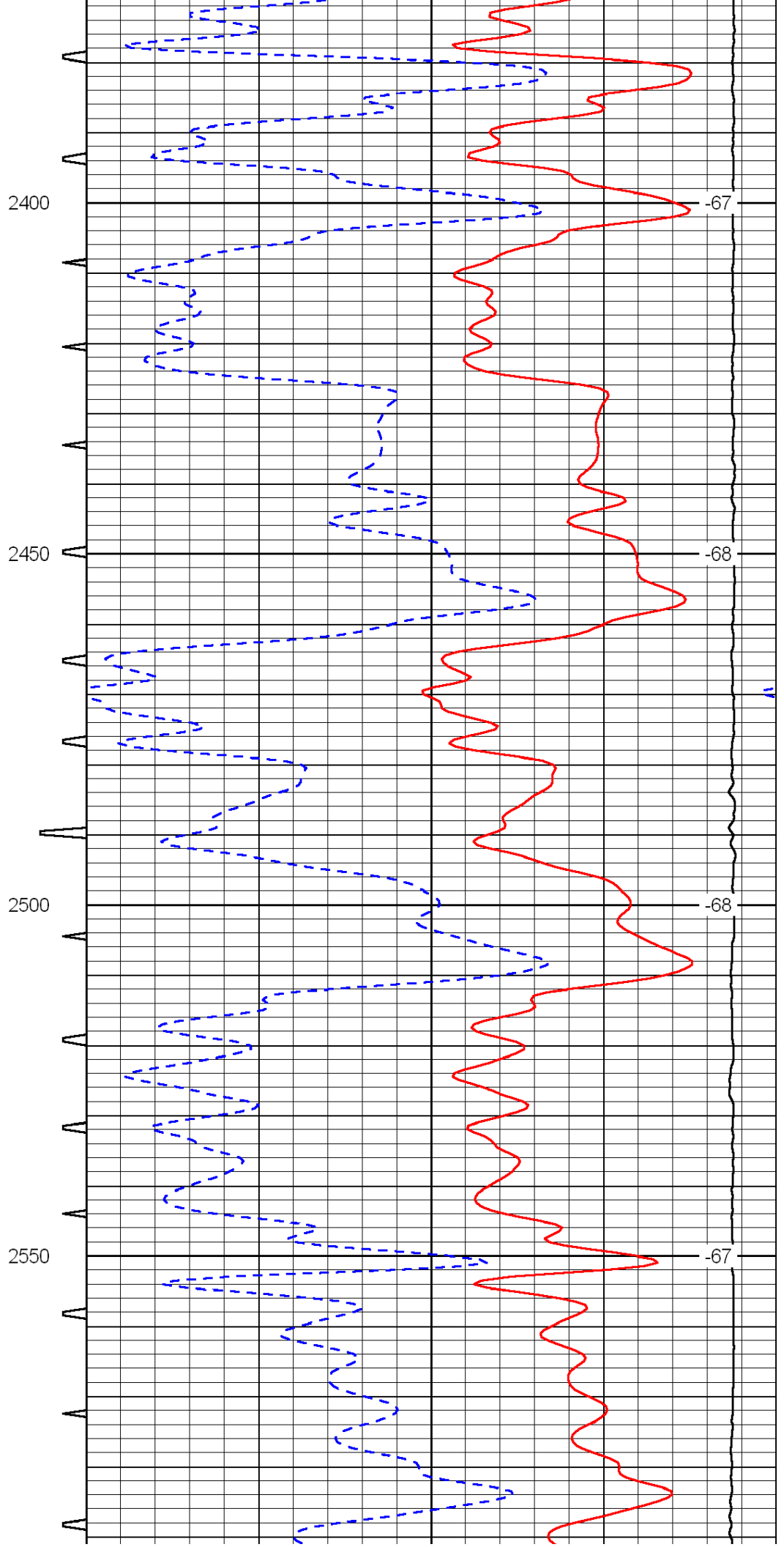
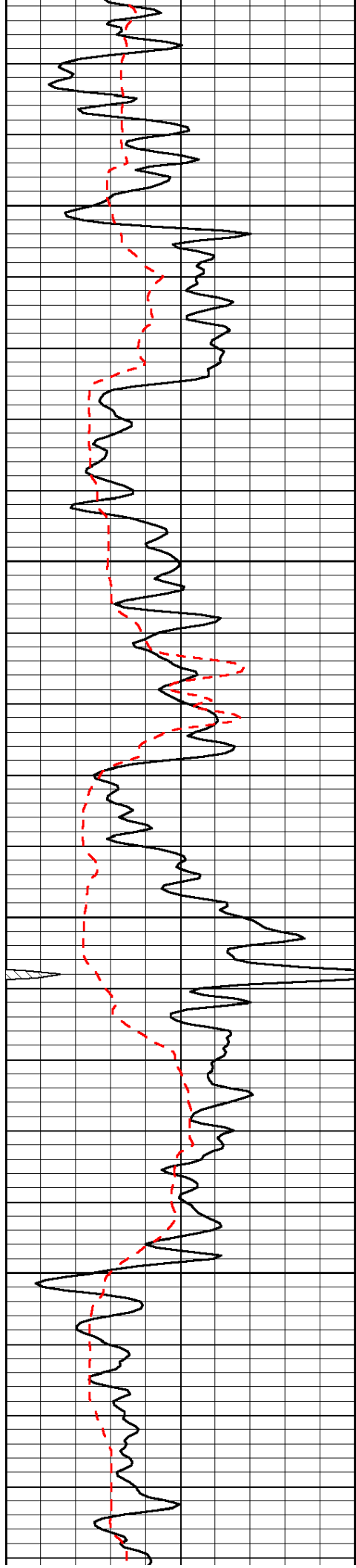


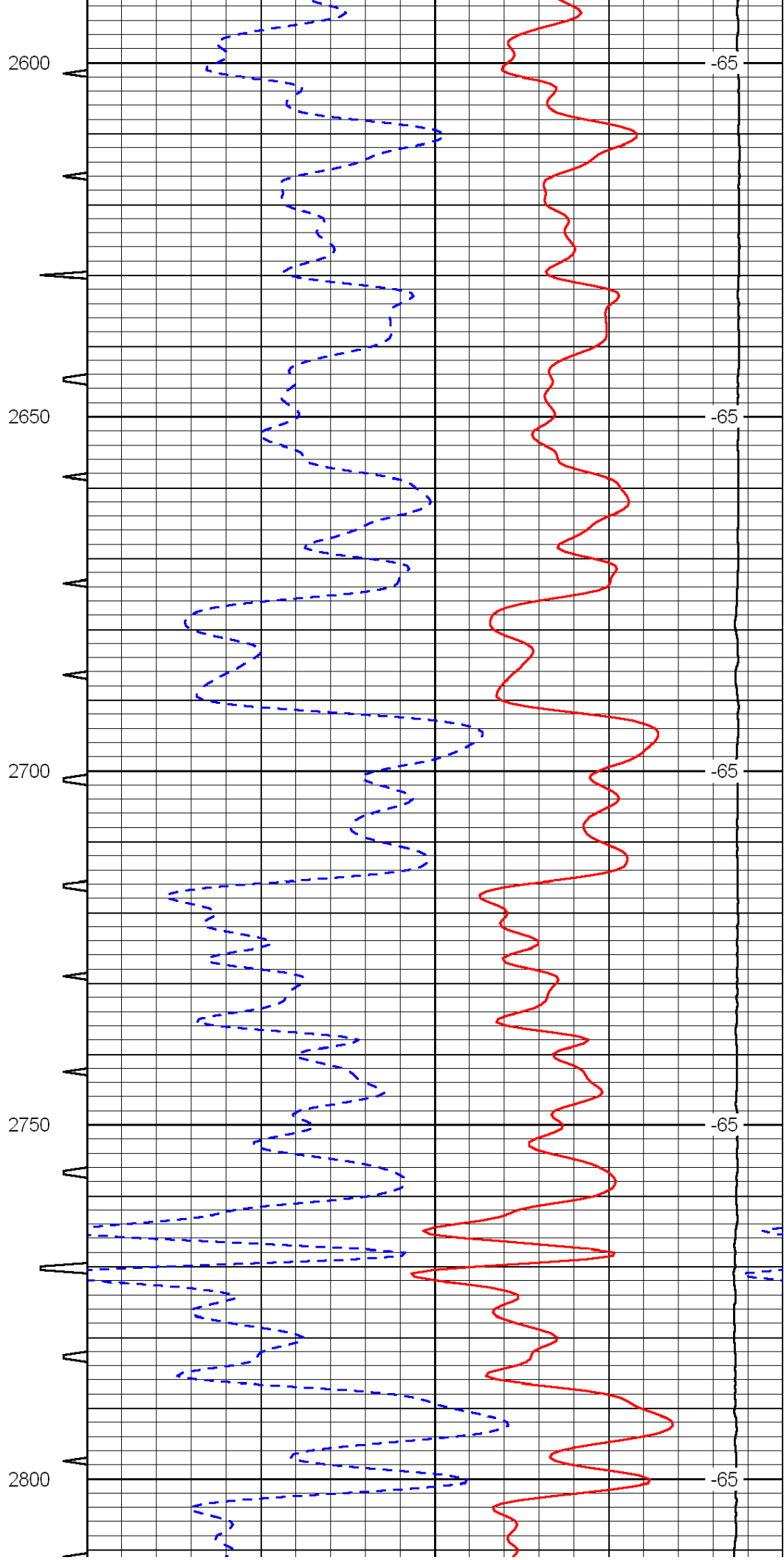
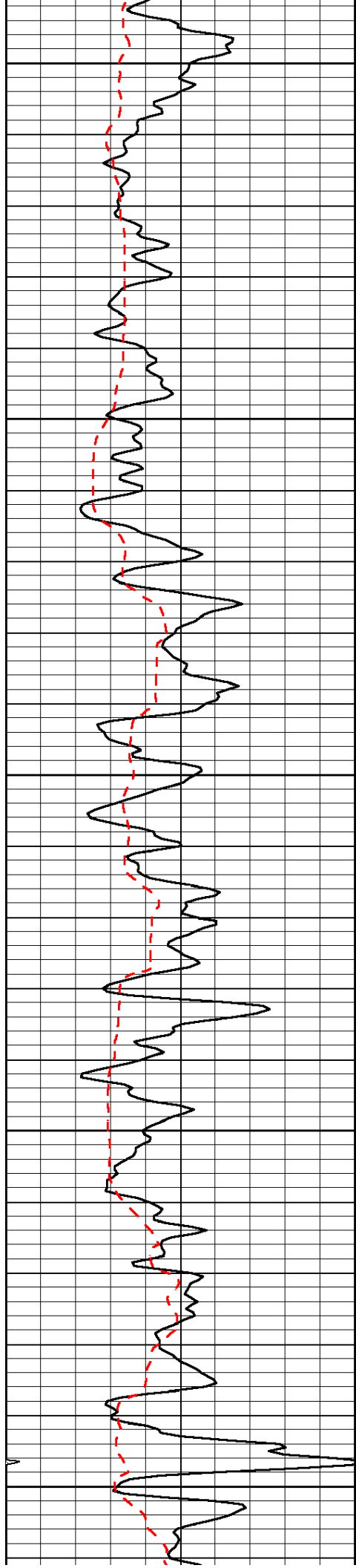


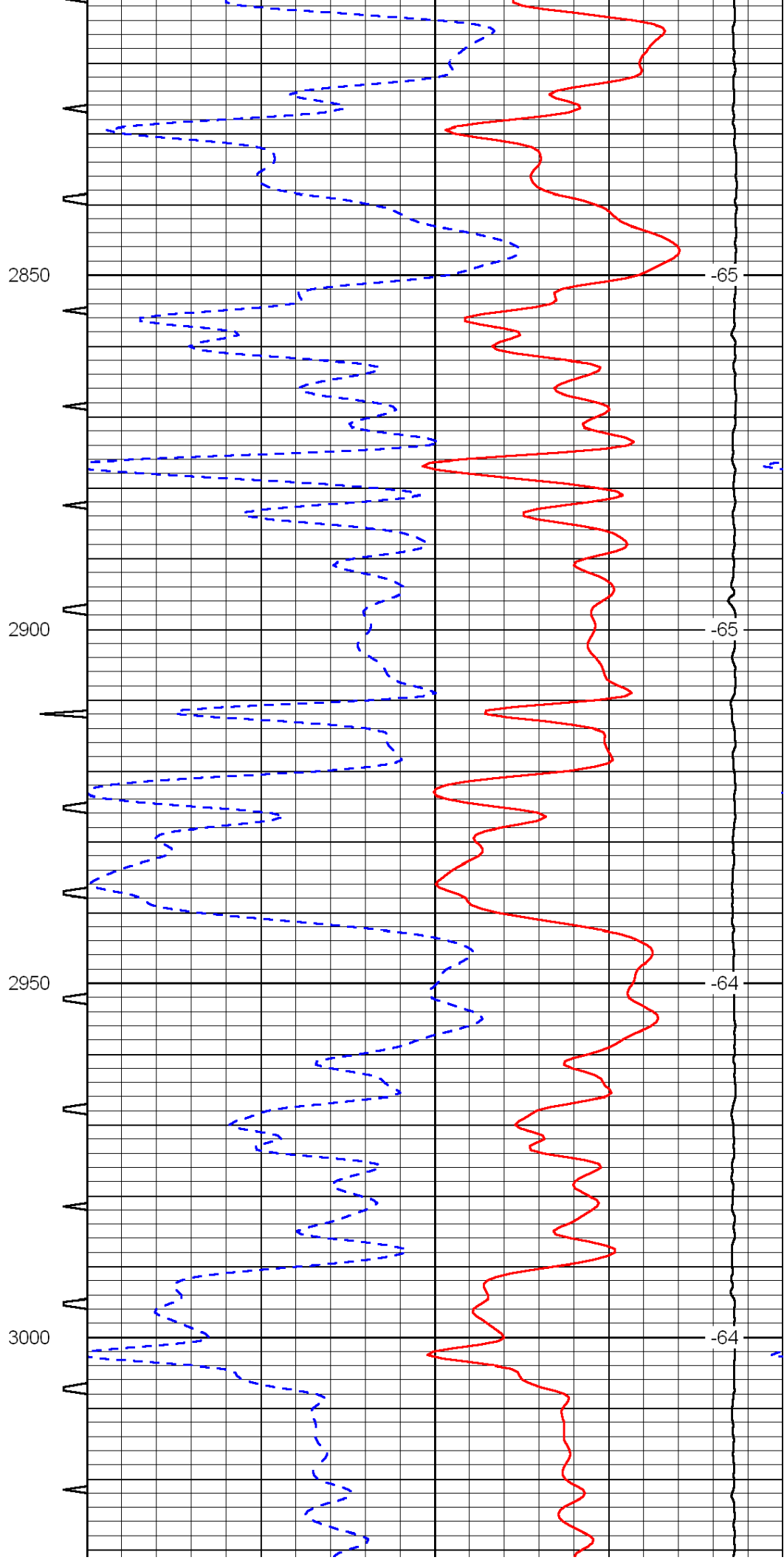
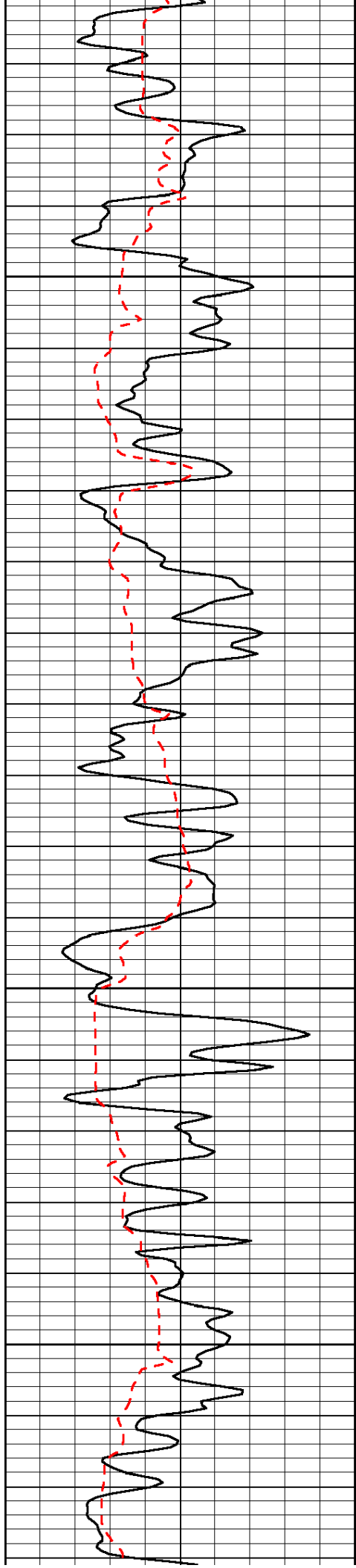


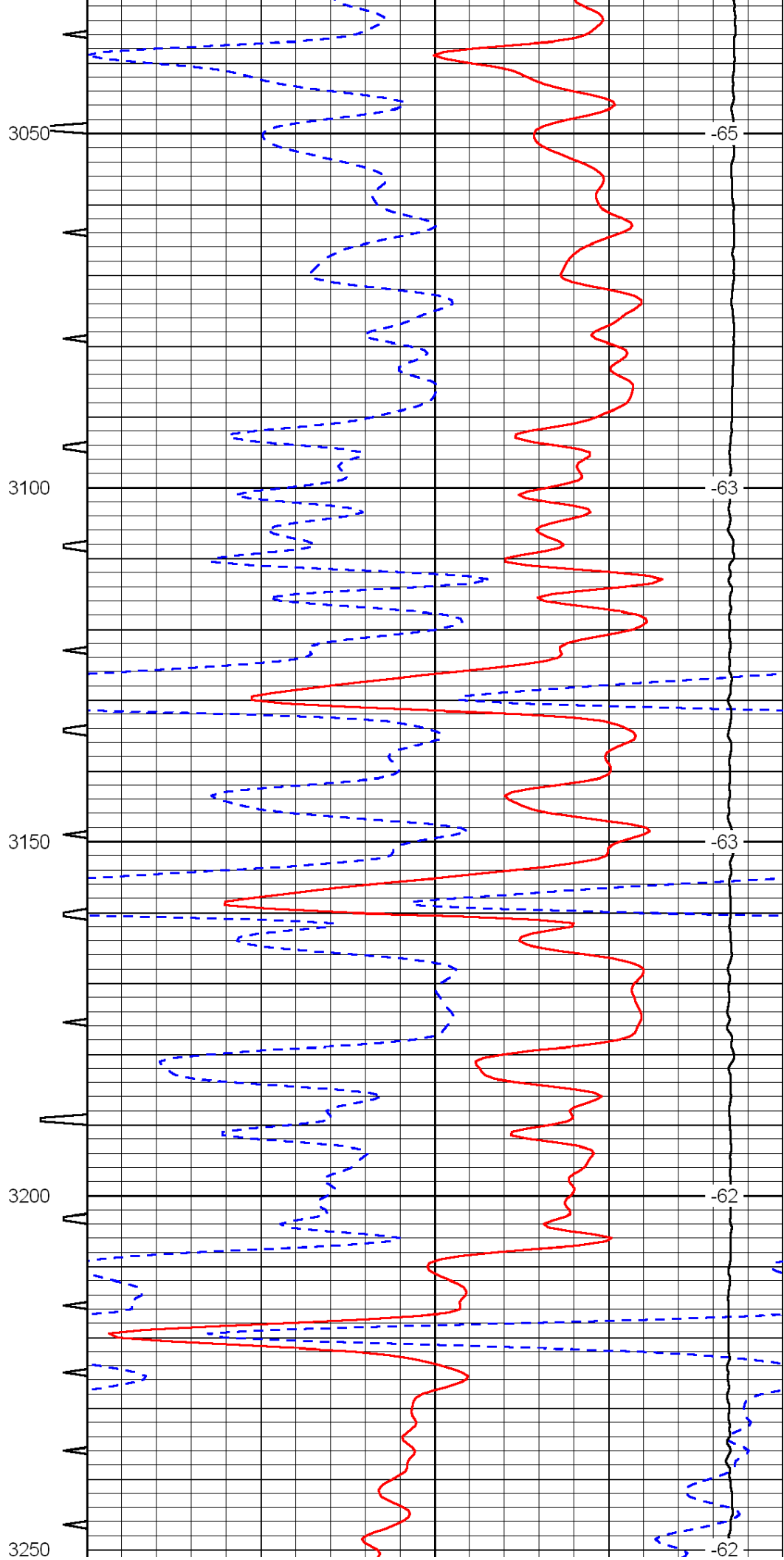
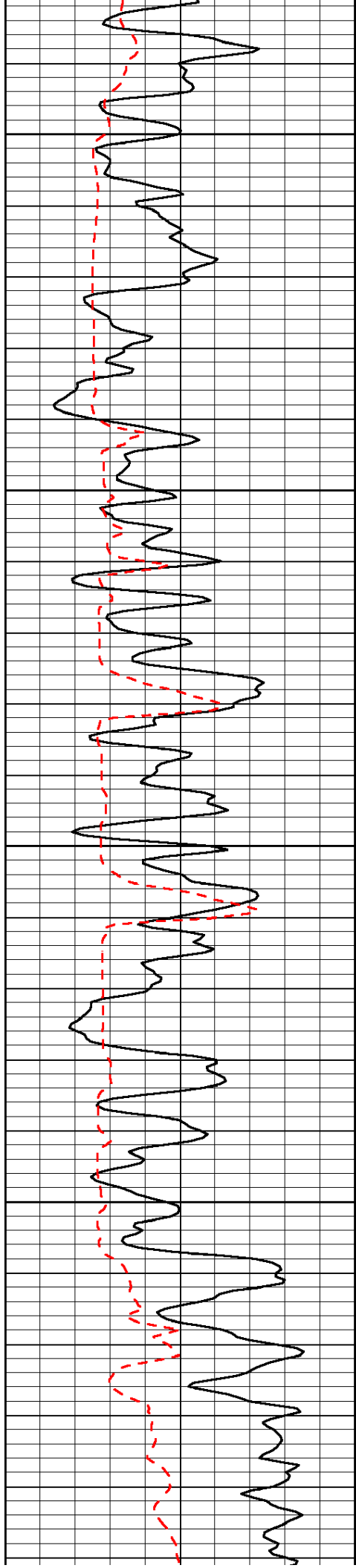


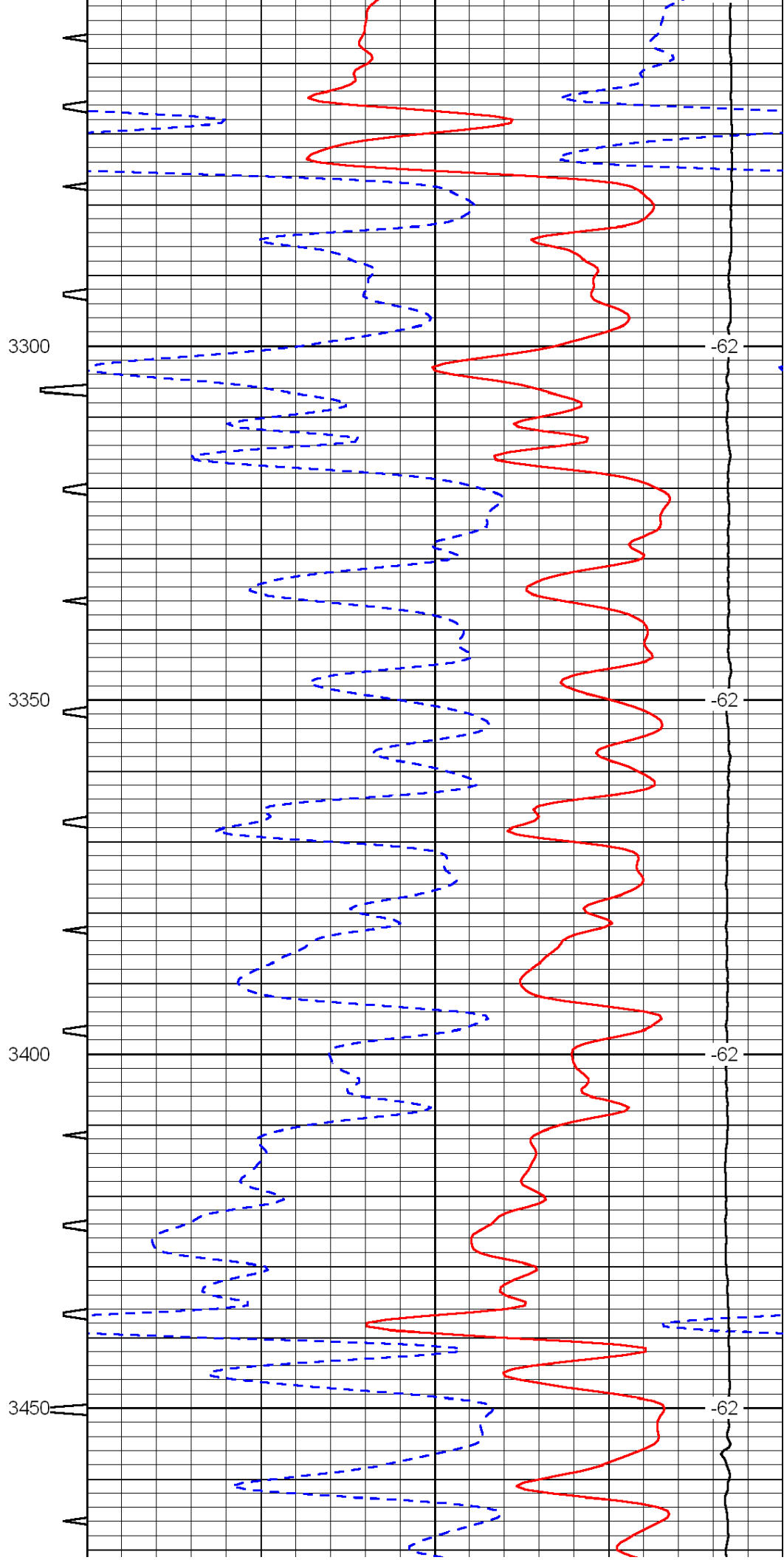
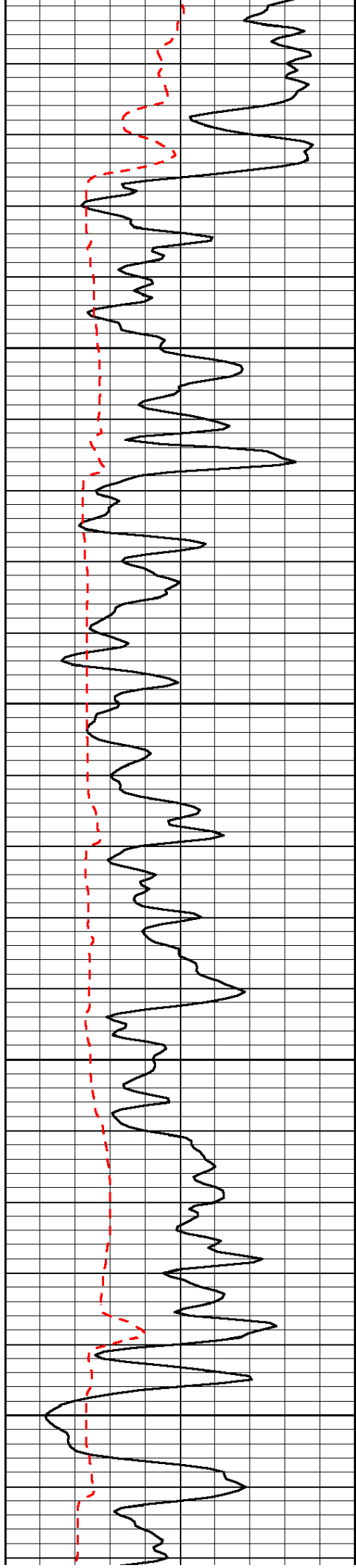


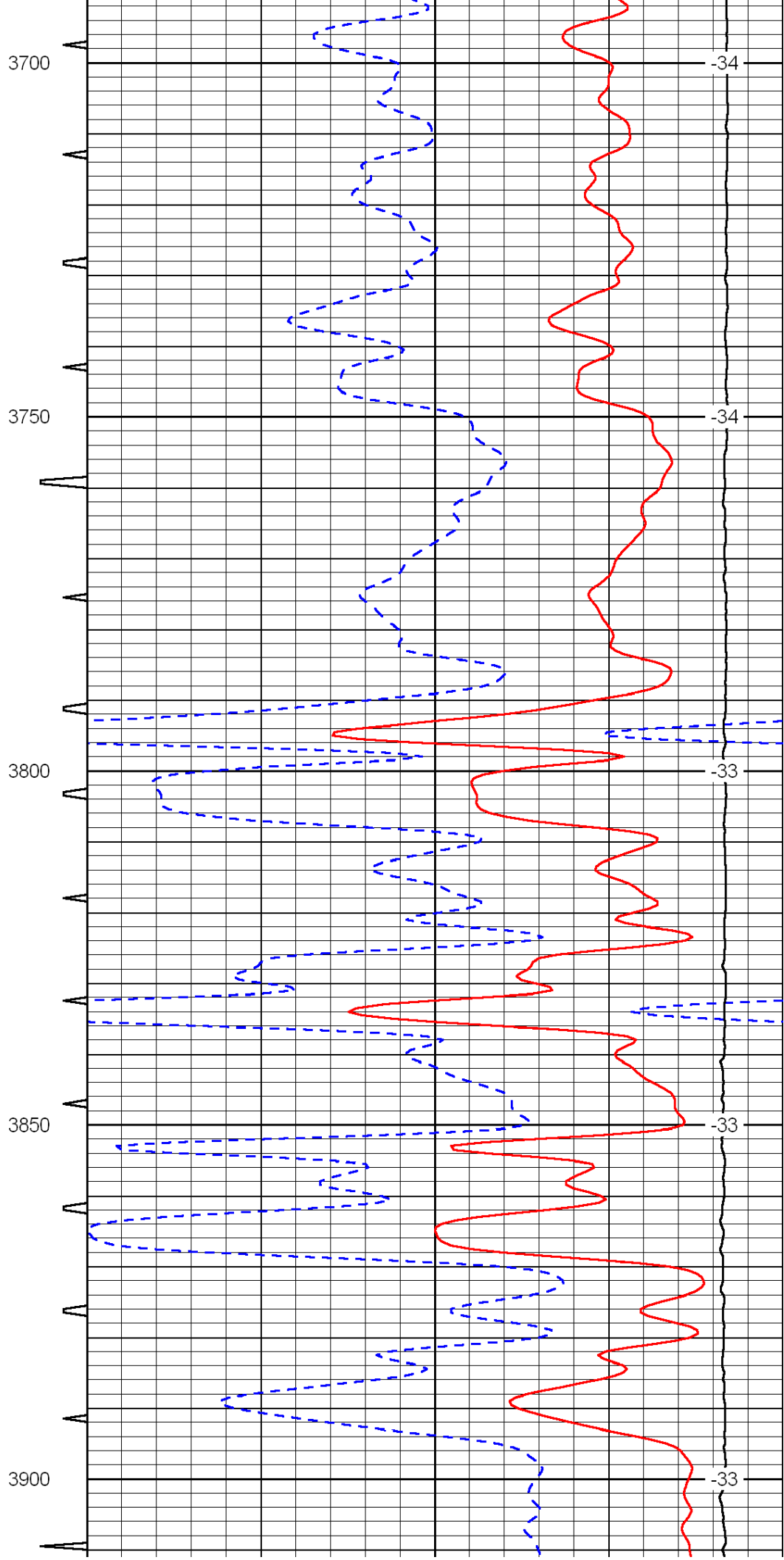
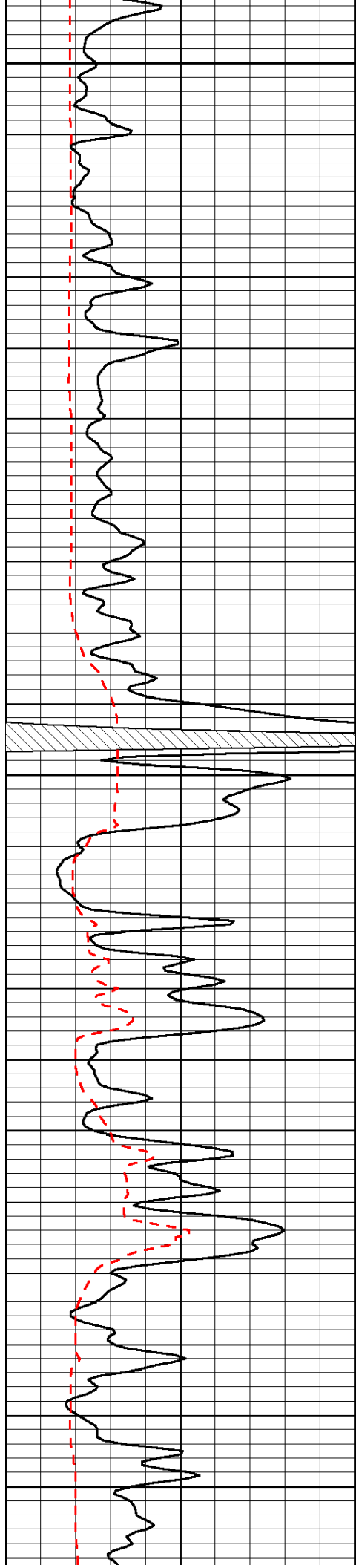


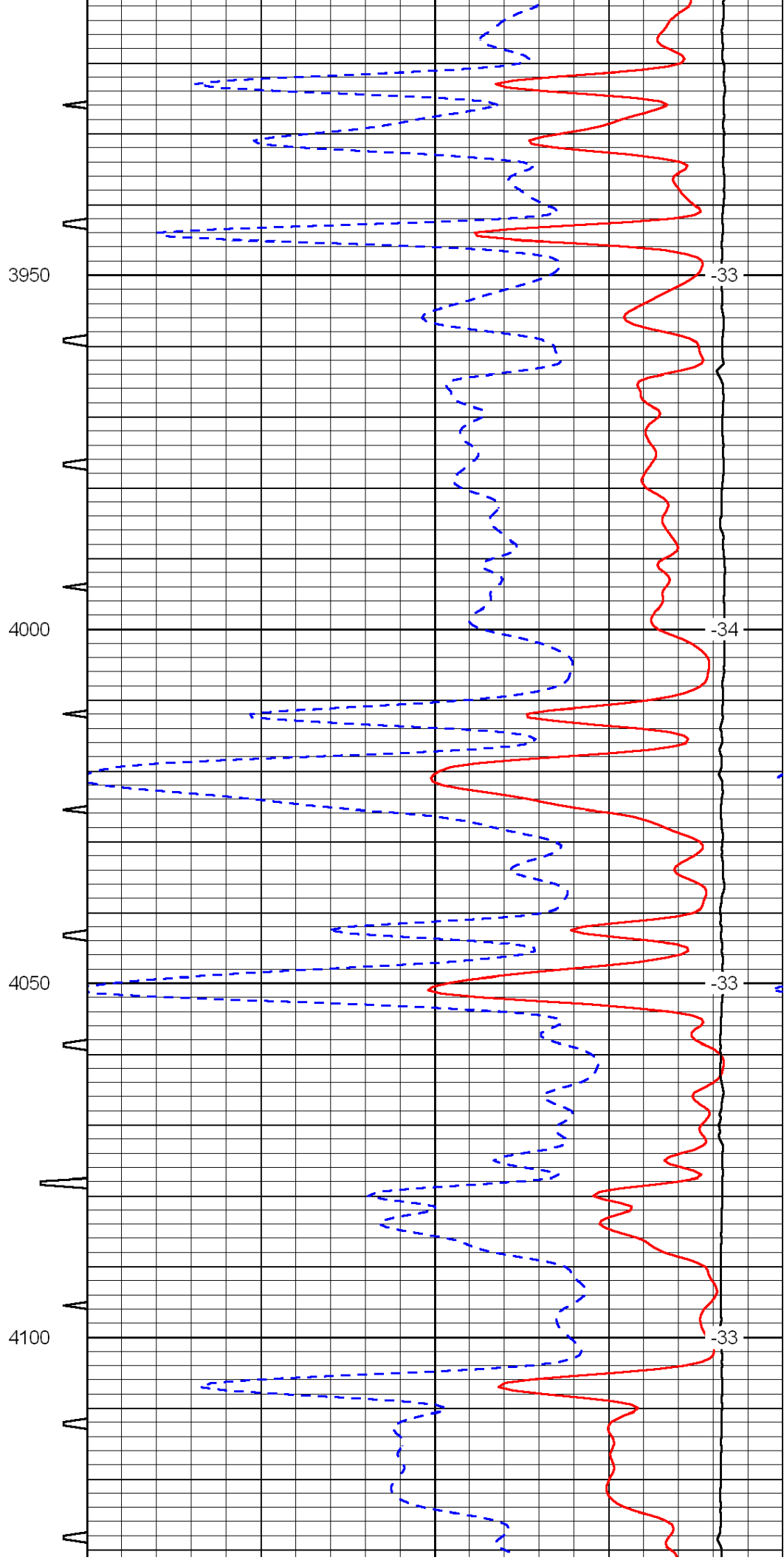
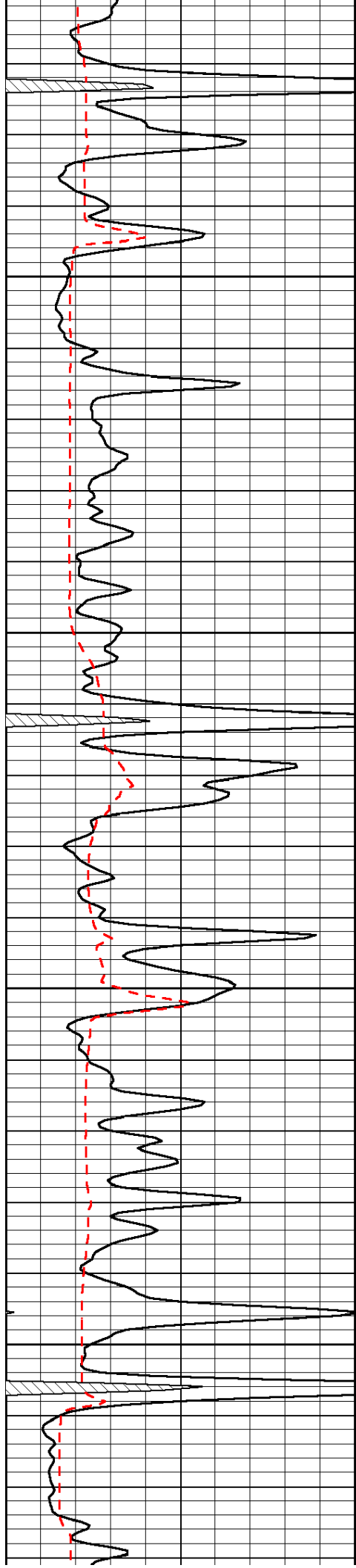


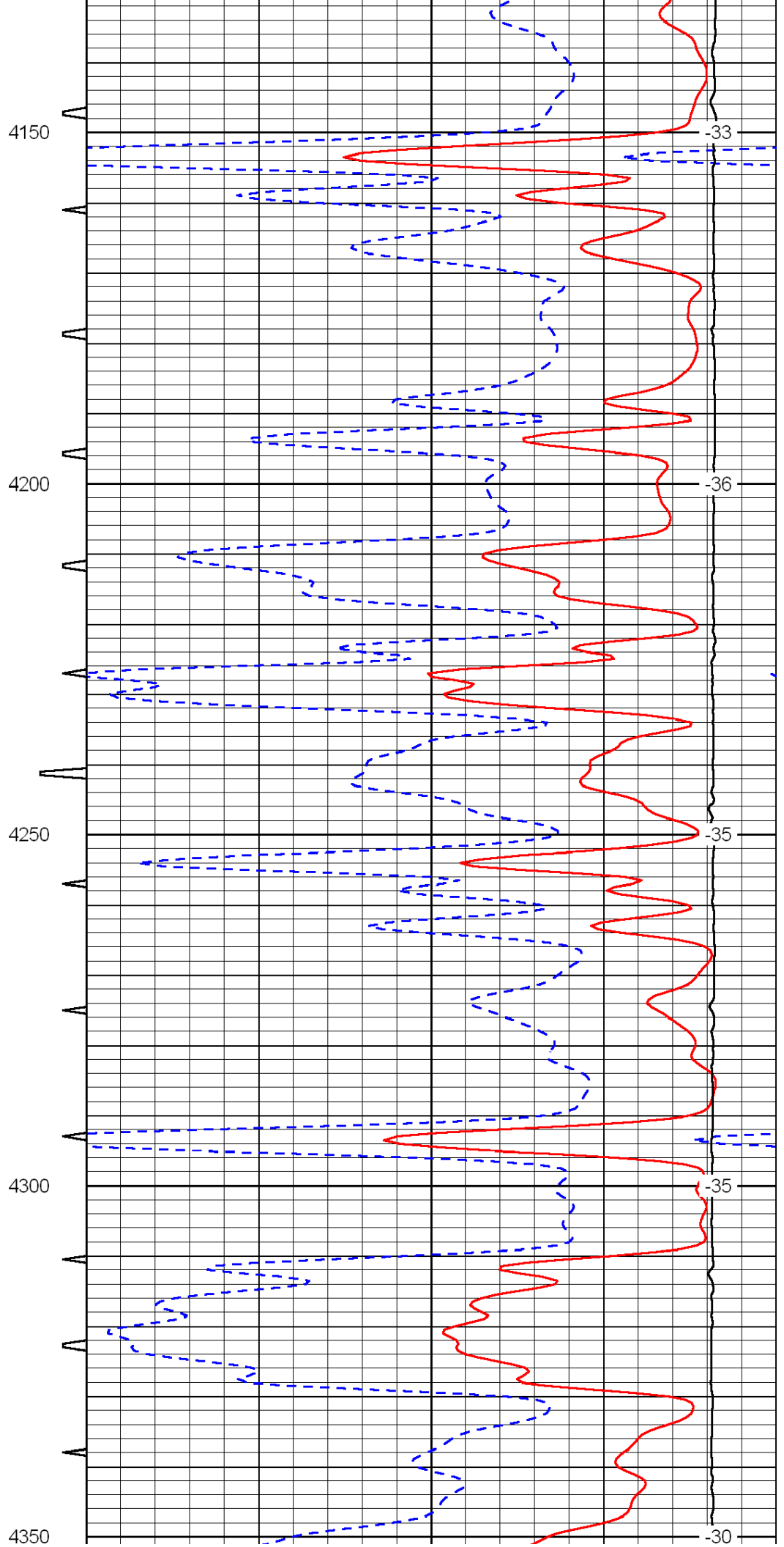
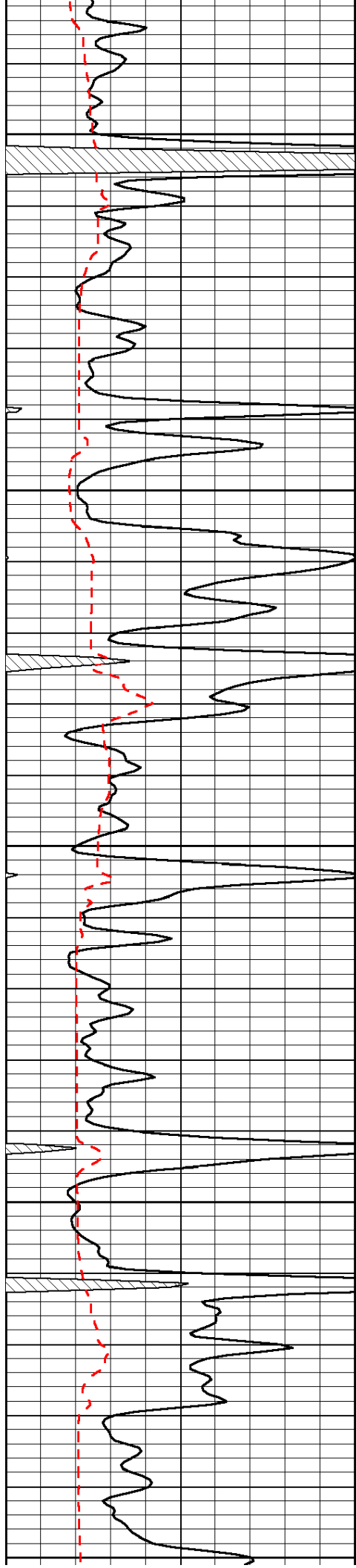


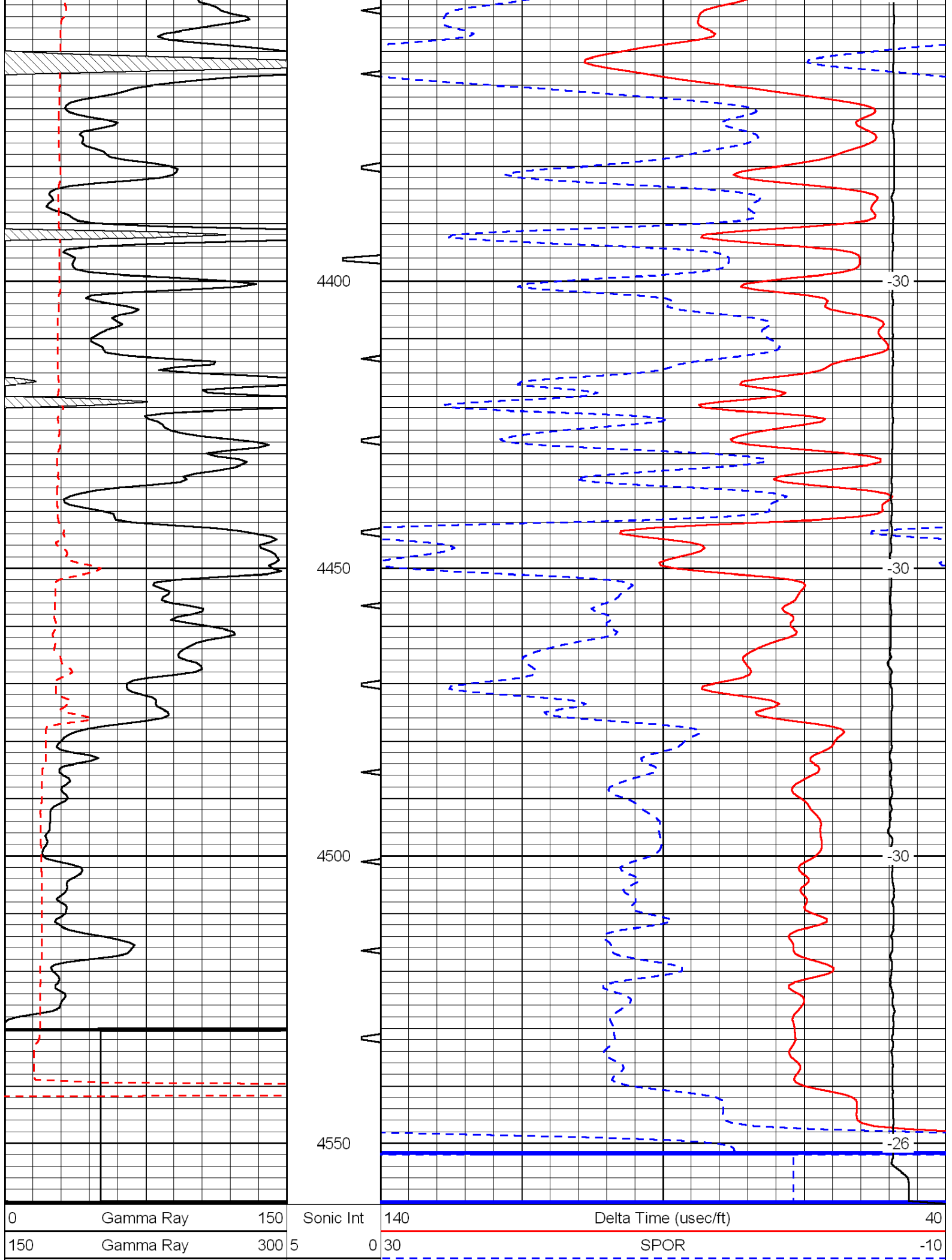












6

Caliper (GAPI)

16

15000

LTEN (lb)

0

LSPD