



Microresistivity Log

DIGITAL LOG (785) 625-3858

API No. 15-083-21,666-00-00	Company American Warrior, Inc.	Other Services CNL/CDL DIL/BHCS
	Well Miner "C" No. 5-13	
	Field Stairrett	
	County Hodgeman State	
		Kansas
	Location NW SW NE SW 1,793' FSL & 1,485' FWL	
	Sec: 13 Twp: 21S Rge: 25W	

Permanent Datum Ground Level	Kelly Bushing	Elevation 2355
Log Measured From	Kelly Bushing	11 Ft. Above Perm. Datum
Drilling Measured From	Kelly Bushing	
Date	8/23/2010	
Run Number	Two	
Depth Driller	4552	
Depth Logger	4554	
Bottom Logged Interval	4553	
Top Log Interval	3650	
Casing Driller	8.625 @ 222	
Casing Logger	222	
Bit Size	7.875	
Type Fluid in Hole	Chemical	
Salinity, ppm CL	8500	
Density / Viscosity	9.4 59	
pH / Fluid Loss	10.5 9.6	
Source of Sample	Flowline	
Rm @ Meas. Temp	.34 @ 82	
Rmf @ Meas. Temp	.26 @ 82	
Rmc @ Meas. Temp	.46 @ 82	
Source of Rmf / Rmc	Charts	
Rm @ BHT	.23 @ 122	
Operating Rig Time	4 1/2 Hours	
Max Rec. Temp. F	122	
Equipment Number	10	
Location	Hays	
Recorded By	J. Long	
Witnessed By	Jim Musgrove	

<<< Fold Here >>>

All interpretations are opinions based on inferences from electrical or other measurements and we cannot and do not guarantee the accuracy or correctness of any interpretation, and we shall not, except in the case of gross or willful negligence on our part, be liable or responsible for any loss, costs, damages, or expenses incurred or sustained by anyone resulting from any interpretation made by any of our officers, agents or employees. These interpretations are also subject to our general terms and conditions set out in our current Price Schedule.

Comments

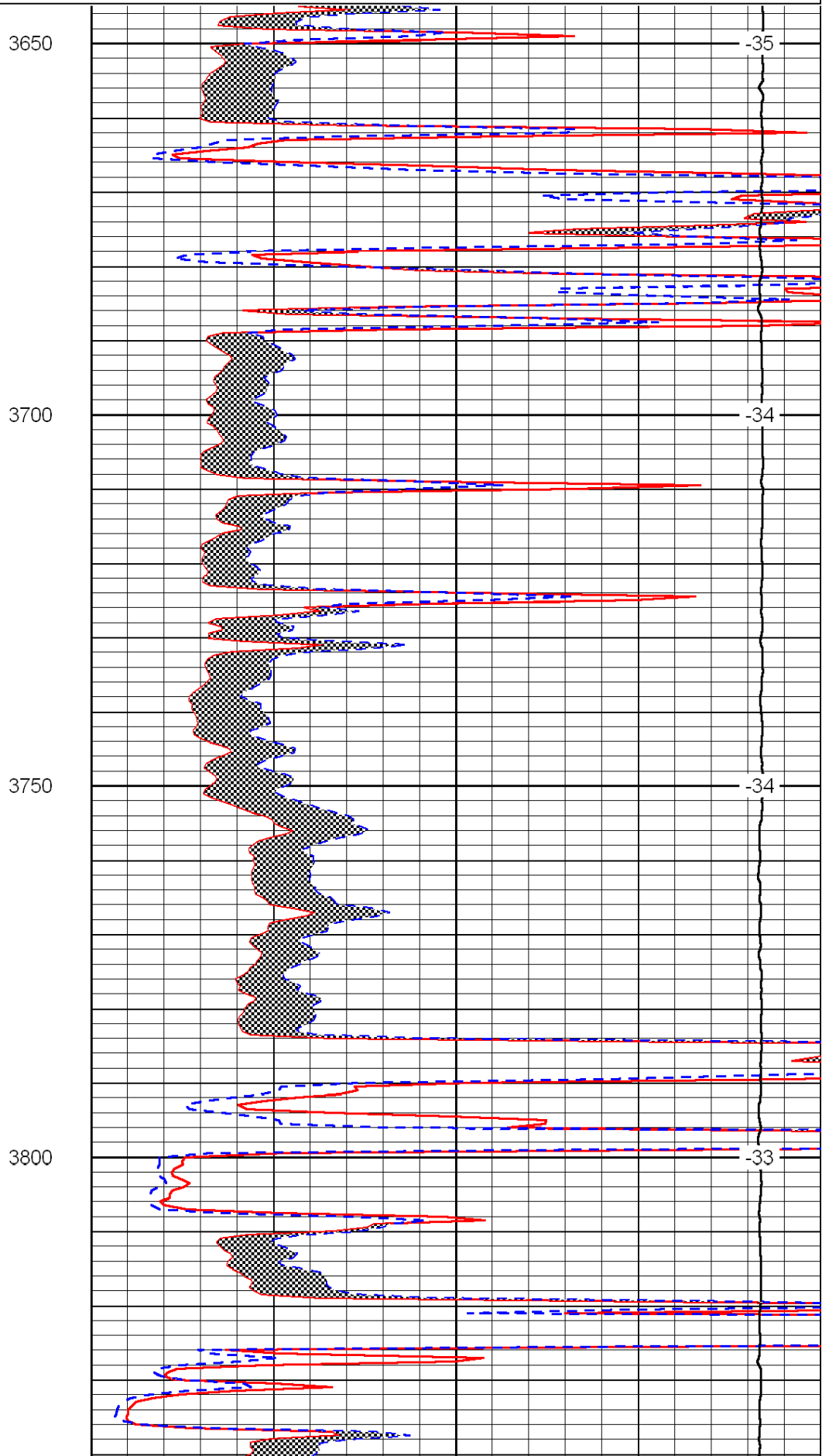
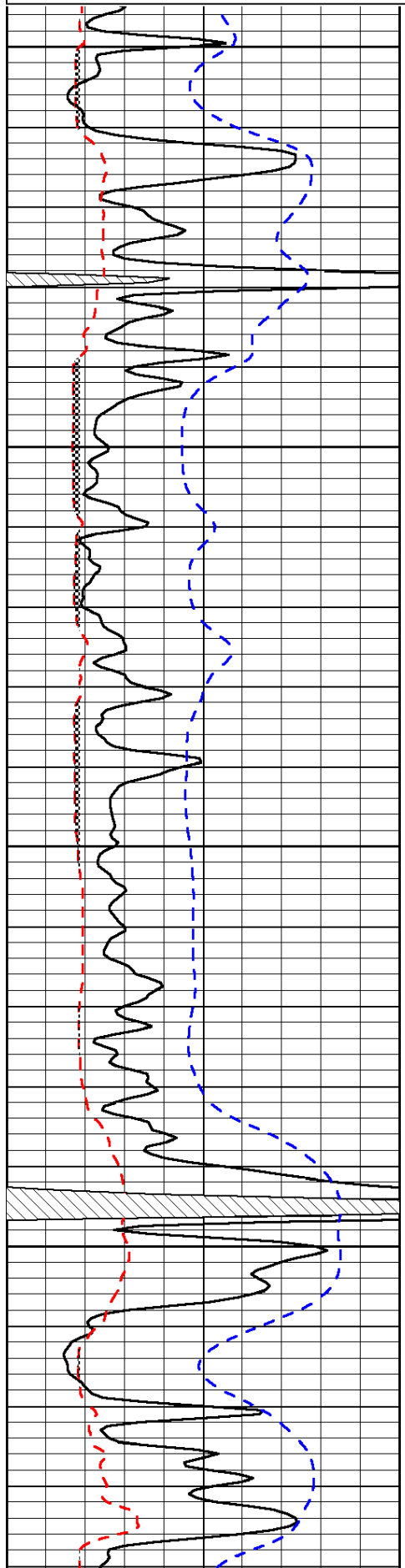
Thank you for using Log-Tech, Inc.
(785) 625-3858

Jetmore, West to 210 Rd, 10 North to V Rd, 1 1/2 East, North Into

0	Gamma Ray	150
6	Micro Log Caliper (GAPI)	16
-200	SP (mV)	0

0	Micro Inverse 1 X 1	40
0	Micro Normal 2"	40
15000	Line Weight	0

LSPD



3650

-35

3700

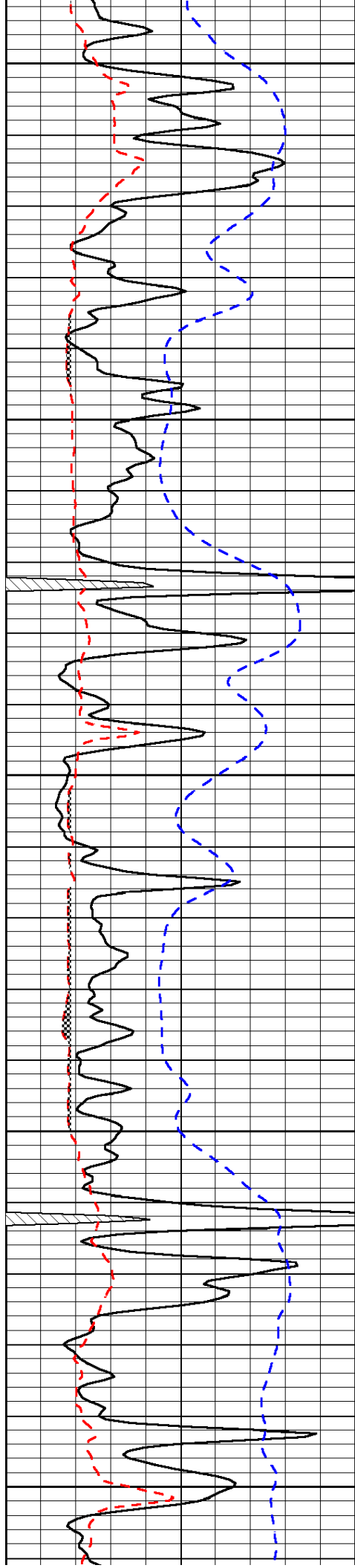
-34

3750

-34

3800

-33



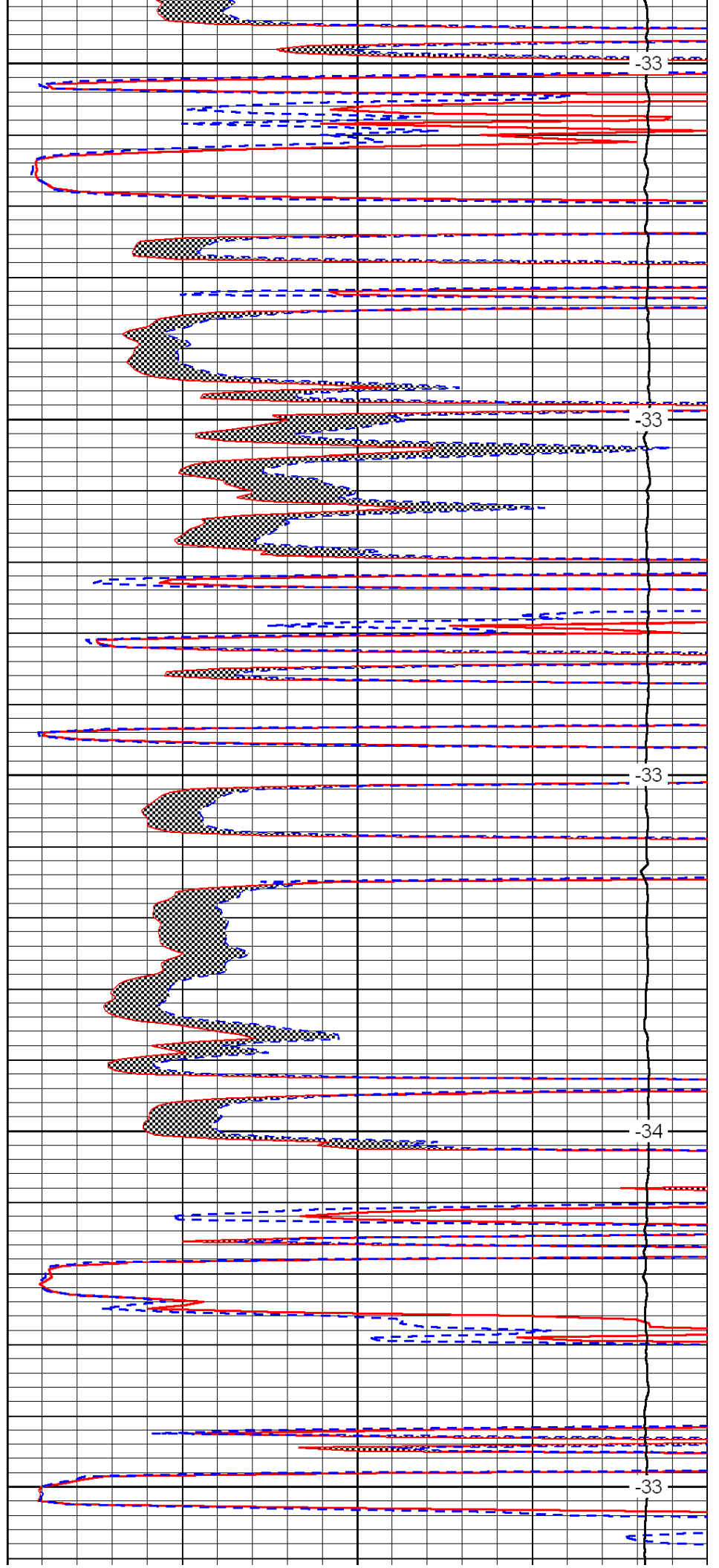
3850

3900

3950

4000

4050



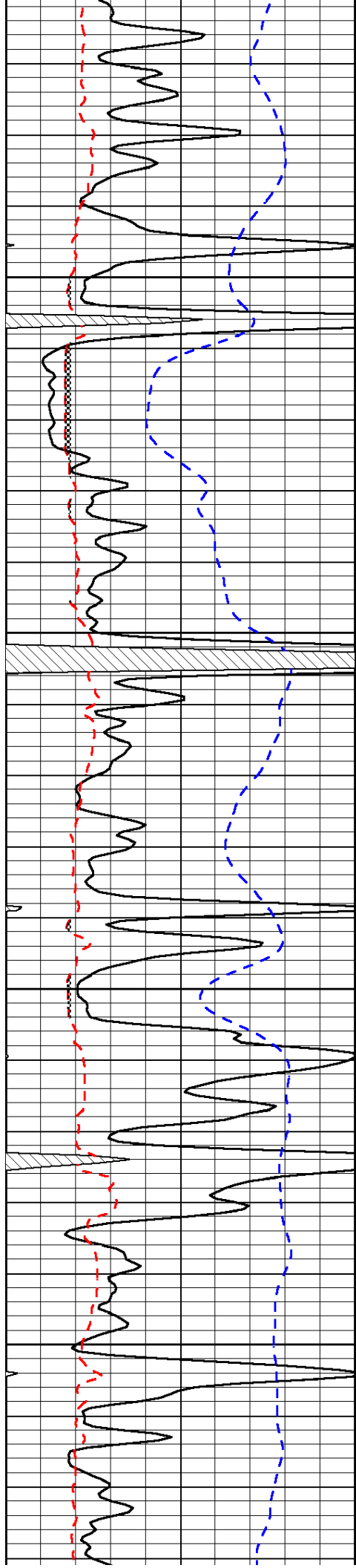
-33

-33

-33

-34

-33

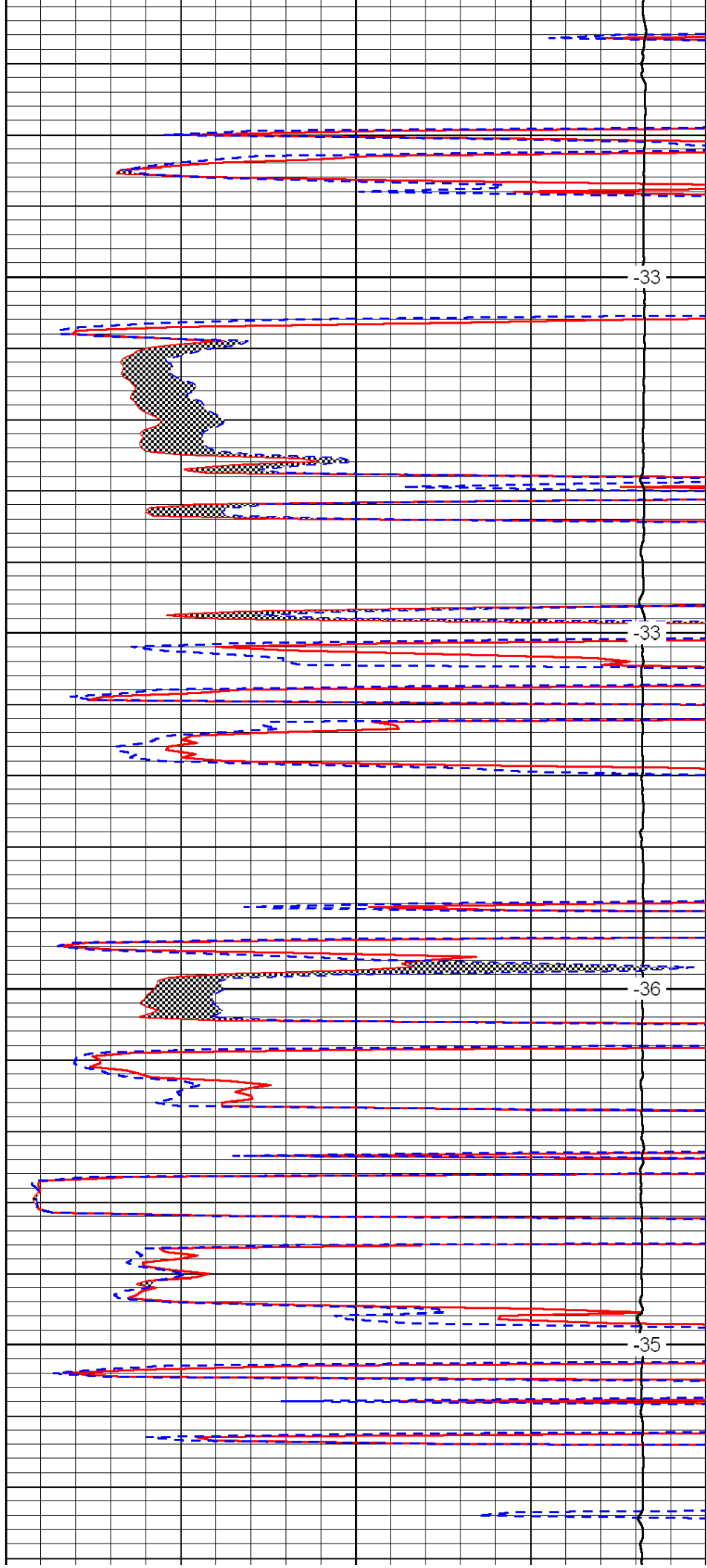


4100

4150

4200

4250

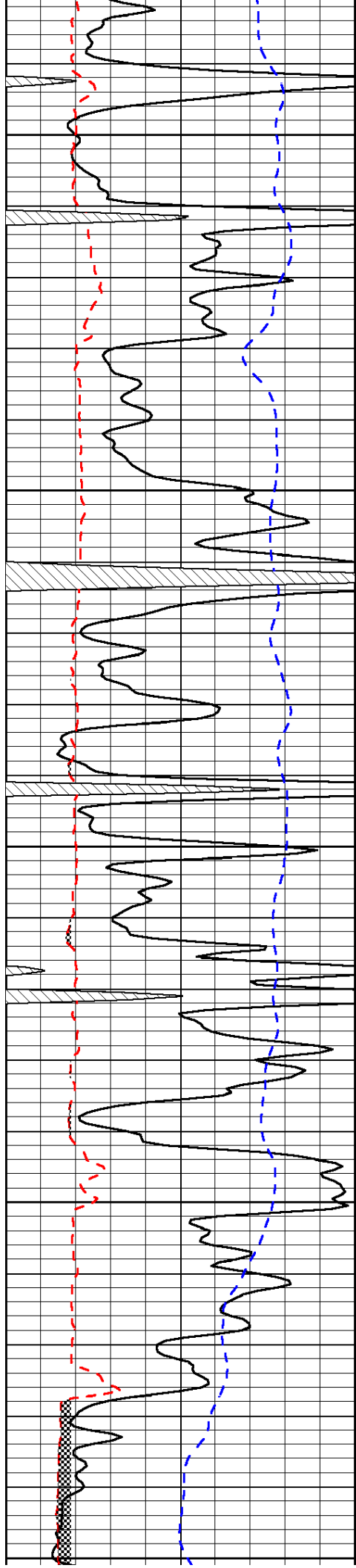


-33

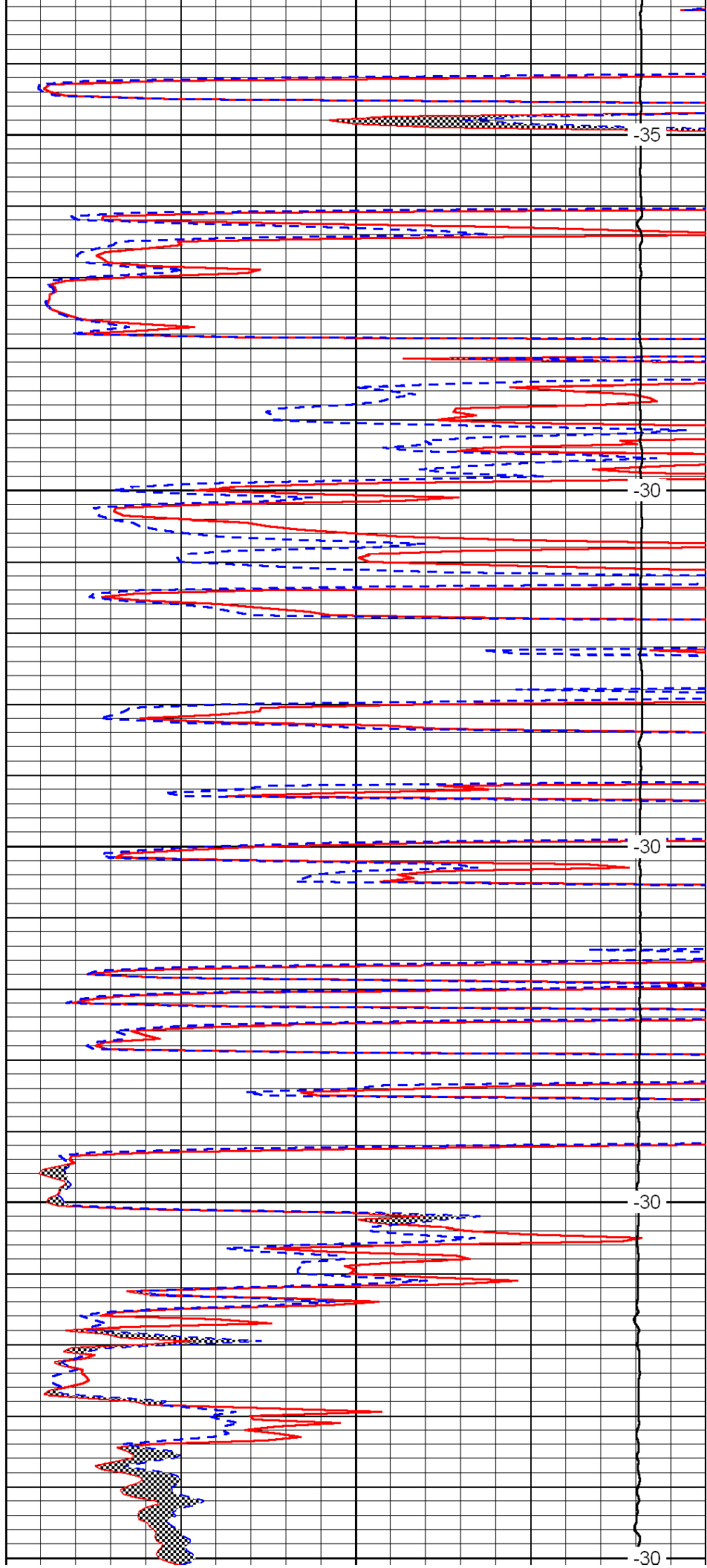
-33

-36

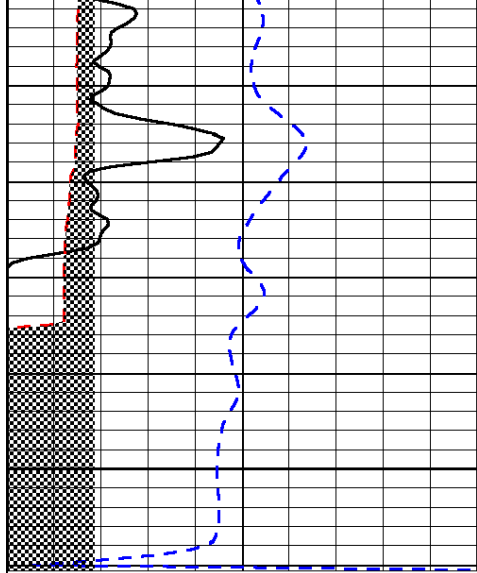
-35



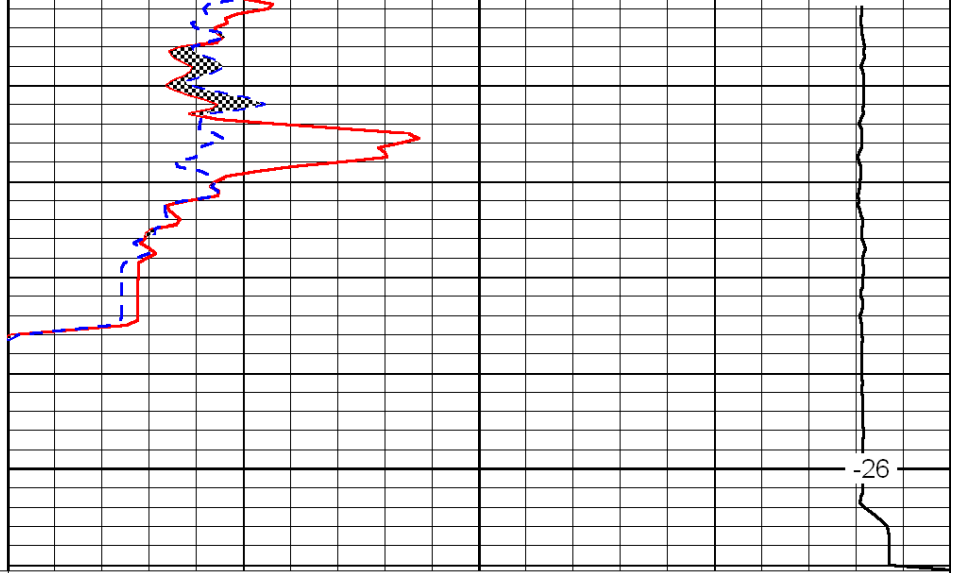
4300
4350
4400
4450
4500



-35
-30
-30
-30
-30



4550



-26

0	Gamma Ray	150
6	Micro Log Caliper (GAPI)	16
-200	SP (mV)	0

0	Micro Inverse 1 X 1	40
0	Micro Normal 2''	40
15000	Line Weight	0

LSPD