



Dual Induction Log

DIGITAL LOG (785) 625-3858

API No.	15-083-21,666-00-00	
Company	American Warrior, Inc.	
Well	Miner "C" No. 5-13	
Field	Stairrett	
County	Hodgeman State	Kansas
Location	NW SW NE SW 1,793' FSL & 1,485' FWL	
Sec: 13	Twp: 21S	Rge: 25W
Other Services	CNL/CDL MEL/BHCS	

Permanent Datum	Ground Level	Elevation 2355
Log Measured From	Kelly Bushing	11 Ft. Above Perm. Datum
Drilling Measured From	Kelly Bushing	
Date	8/23/2010	
Run Number	One	
Depth Driller	4552	
Depth Logger	4554	
Bottom Logged Interval	4553	
Top Log Interval	200	
Casing Driller	8.625 @ 222	
Casing Logger	222	
Bit Size	7.875	
Type Fluid in Hole	Chemical	
Salinity, ppm CL	8500	
Density / Viscosity	9.4	59
pH / Fluid Loss	10.5	9.6
Source of Sample	Flowline	
Rm @ Meas. Temp	.34 @	82
Rmf @ Meas. Temp	.26 @	82
Rmc @ Meas. Temp	.46 @	82
Source of Rmf / Rmc	Charts	
Rm @ BHT	.23 @	122
Operating Rig Time	4 1/2 Hours	
Max Rec. Temp. F	122	
Equipment Number	10	
Location	Hays	
Recorded By	J. Long	
Witnessed By	Jim Musgrove	

<<< Fold Here >>>

All interpretations are opinions based on inferences from electrical or other measurements and we cannot and do not guarantee the accuracy or correctness of any interpretation, and we shall not, except in the case of gross or willful negligence on our part, be liable or responsible for any loss, costs, damages, or expenses incurred or sustained by anyone resulting from any interpretation made by any of our officers, agents or employees. These interpretations are also subject to our general terms and conditions set out in our current Price Schedule.

Comments

Thank you for using Log-Tech, Inc.
(785) 625-3858

Jetmore, West to 210 Rd, 10 North to V Rd, 1 1/2 East, North Into

Database File: c:\warrior\data\amwar_miner c no. 5-13\amwarrhd.db
 Dataset Pathname: dil/awstck
 Presentation Format: dil2in
 Dataset Creation: Mon Aug 23 08:41:24 2010
 Charted by: Depth in Feet scaled 1:600

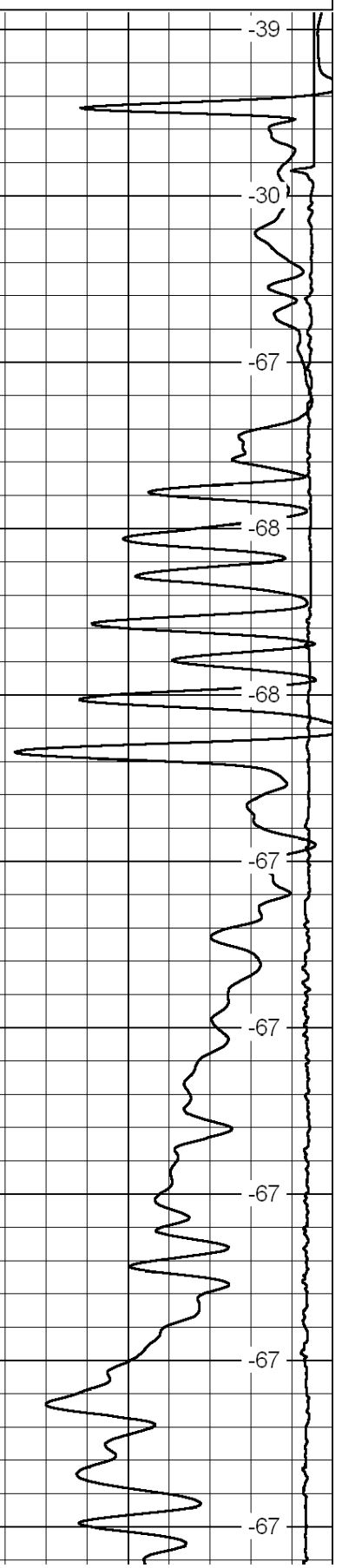
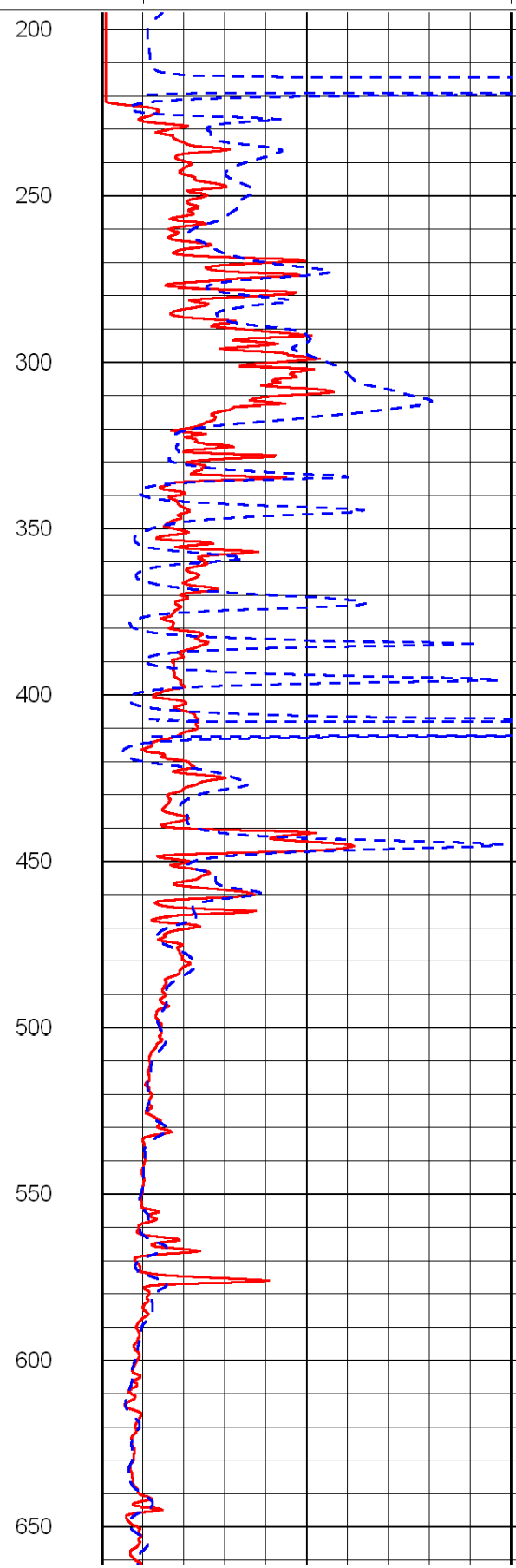
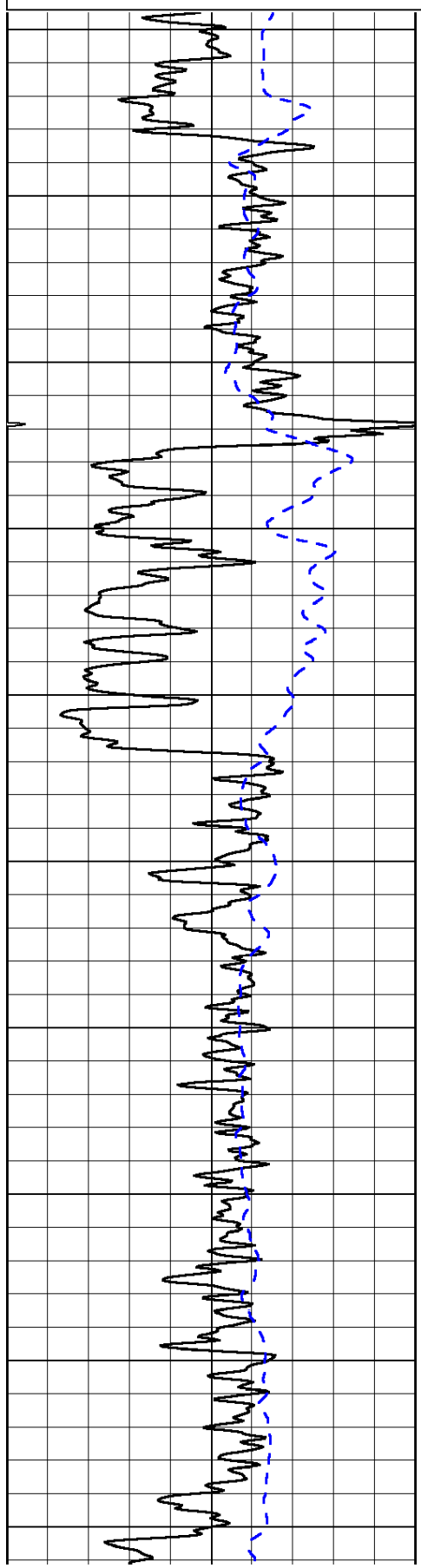
0	Gamma Ray	150
-200	SP (mV)	0

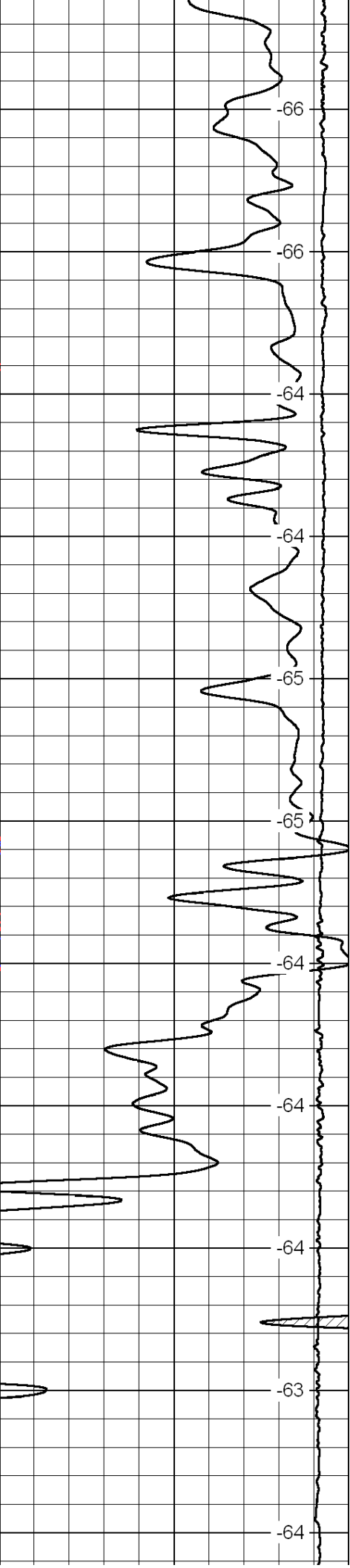
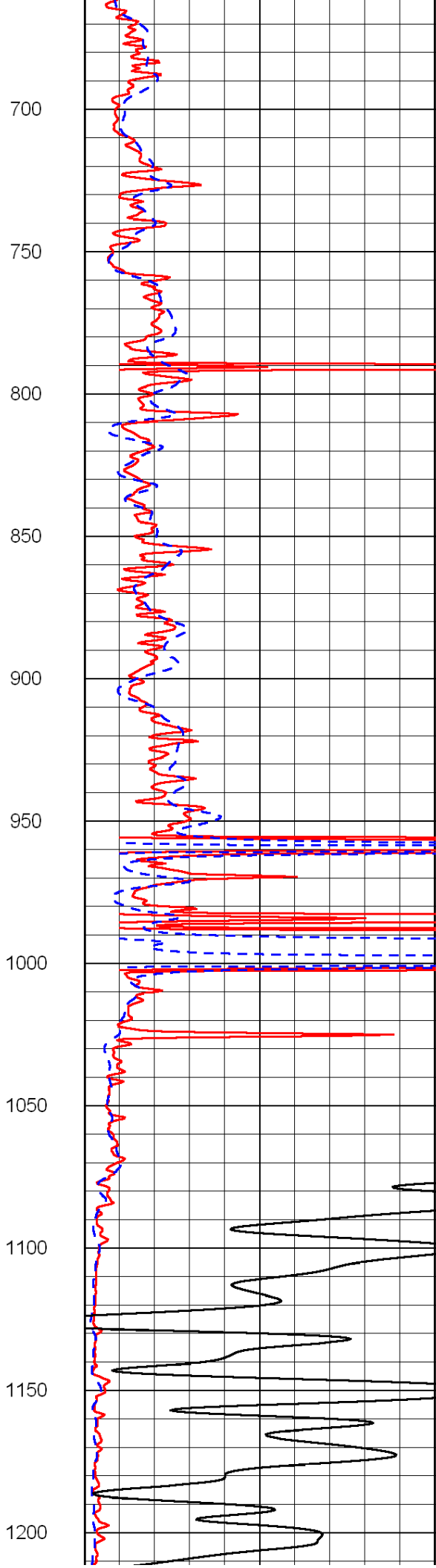
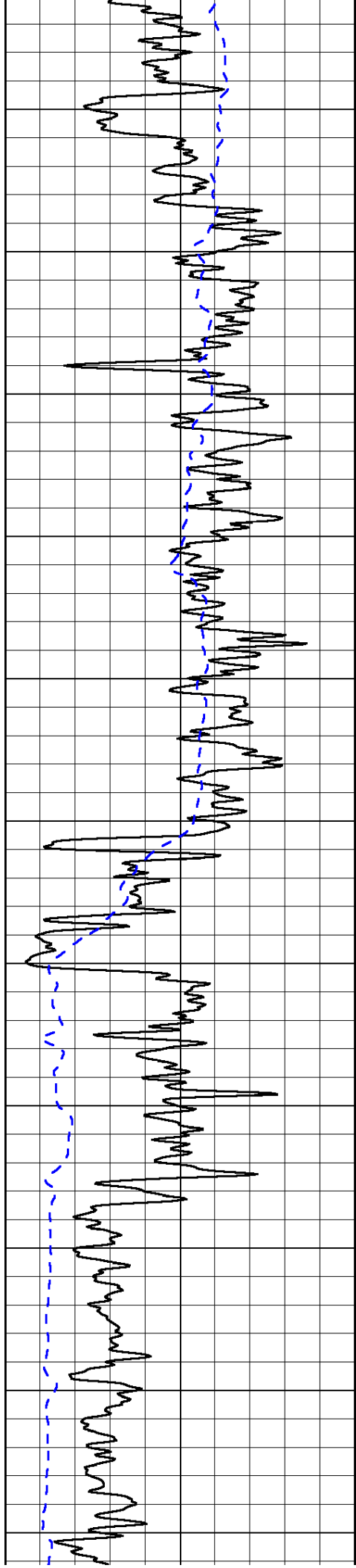
0	Shallow Resistivity	50
0	Deep Resistivity	50

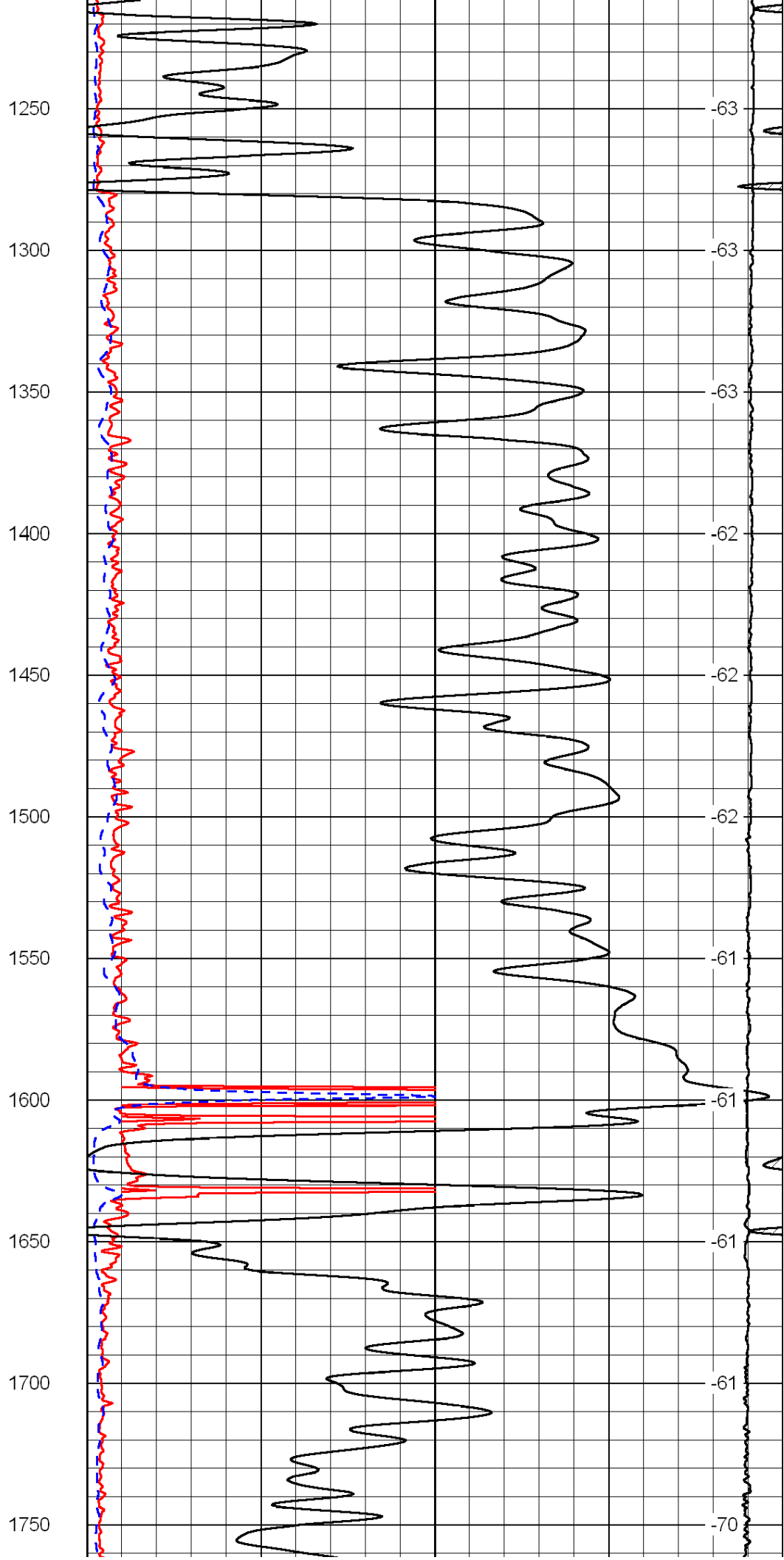
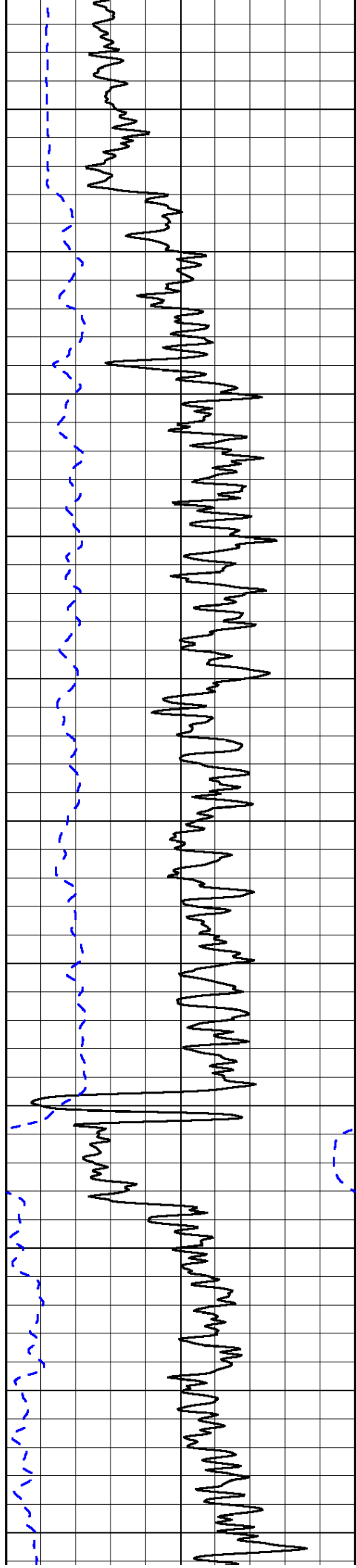
LSPD

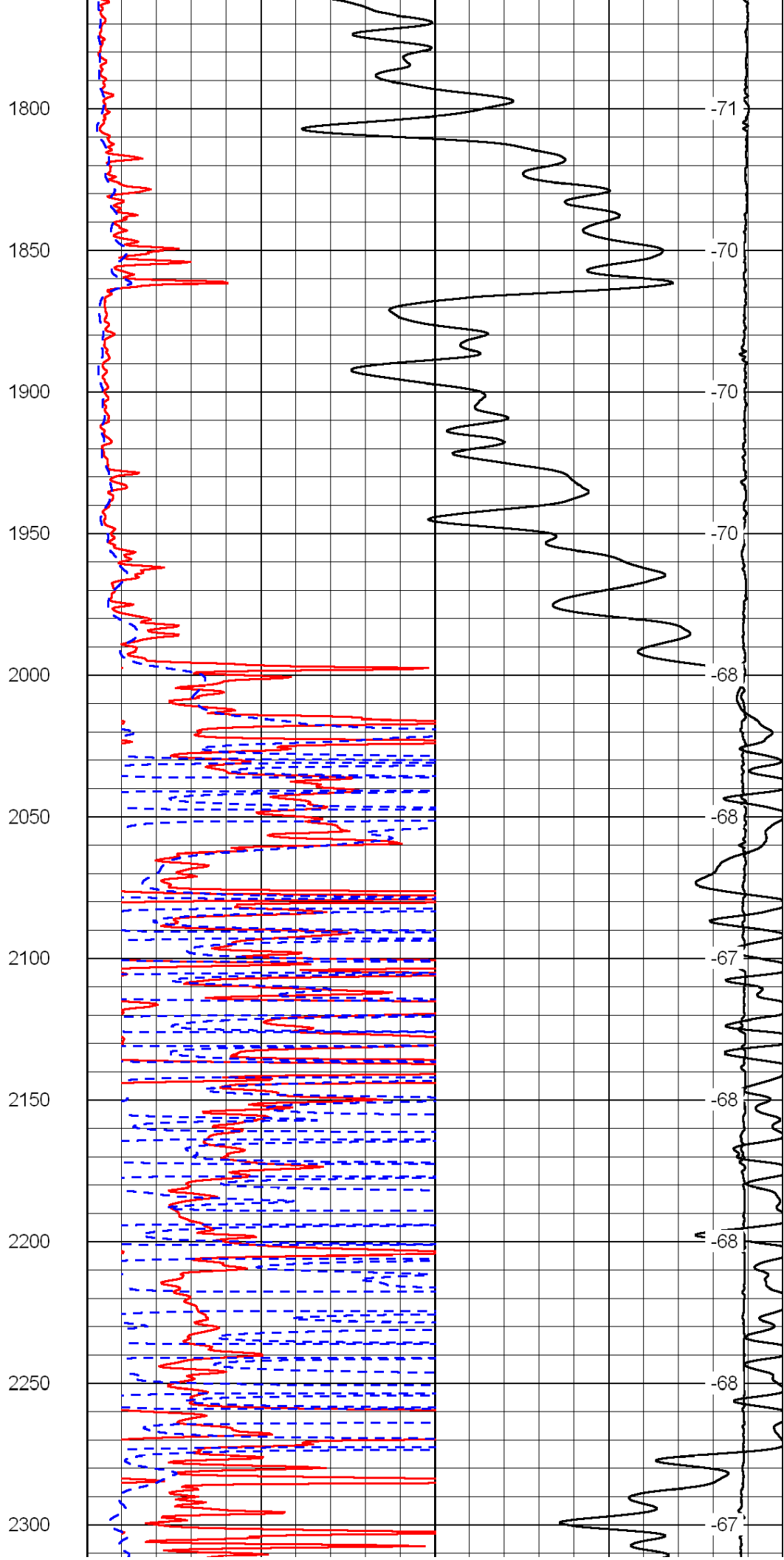
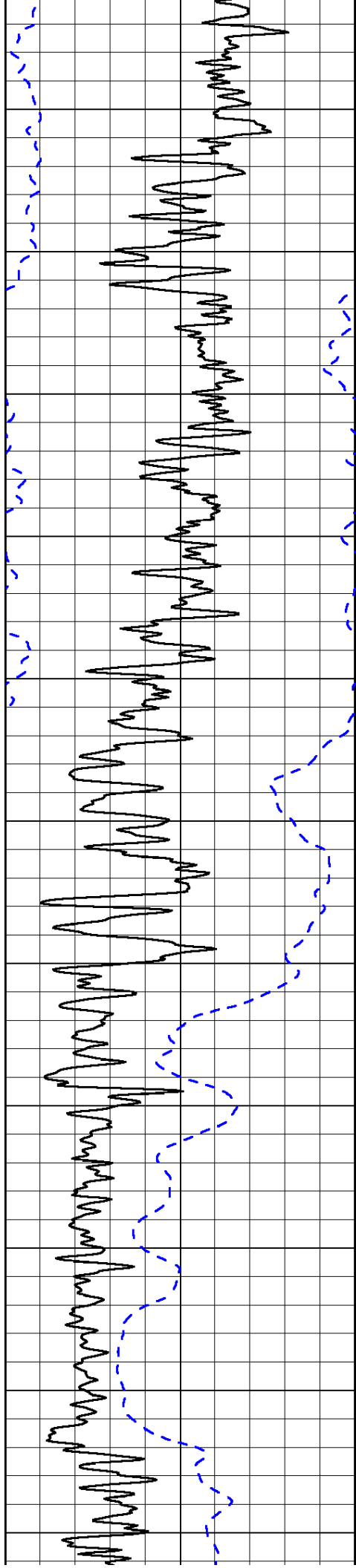
1000	Conductivity	0
15000	Line Tension	0

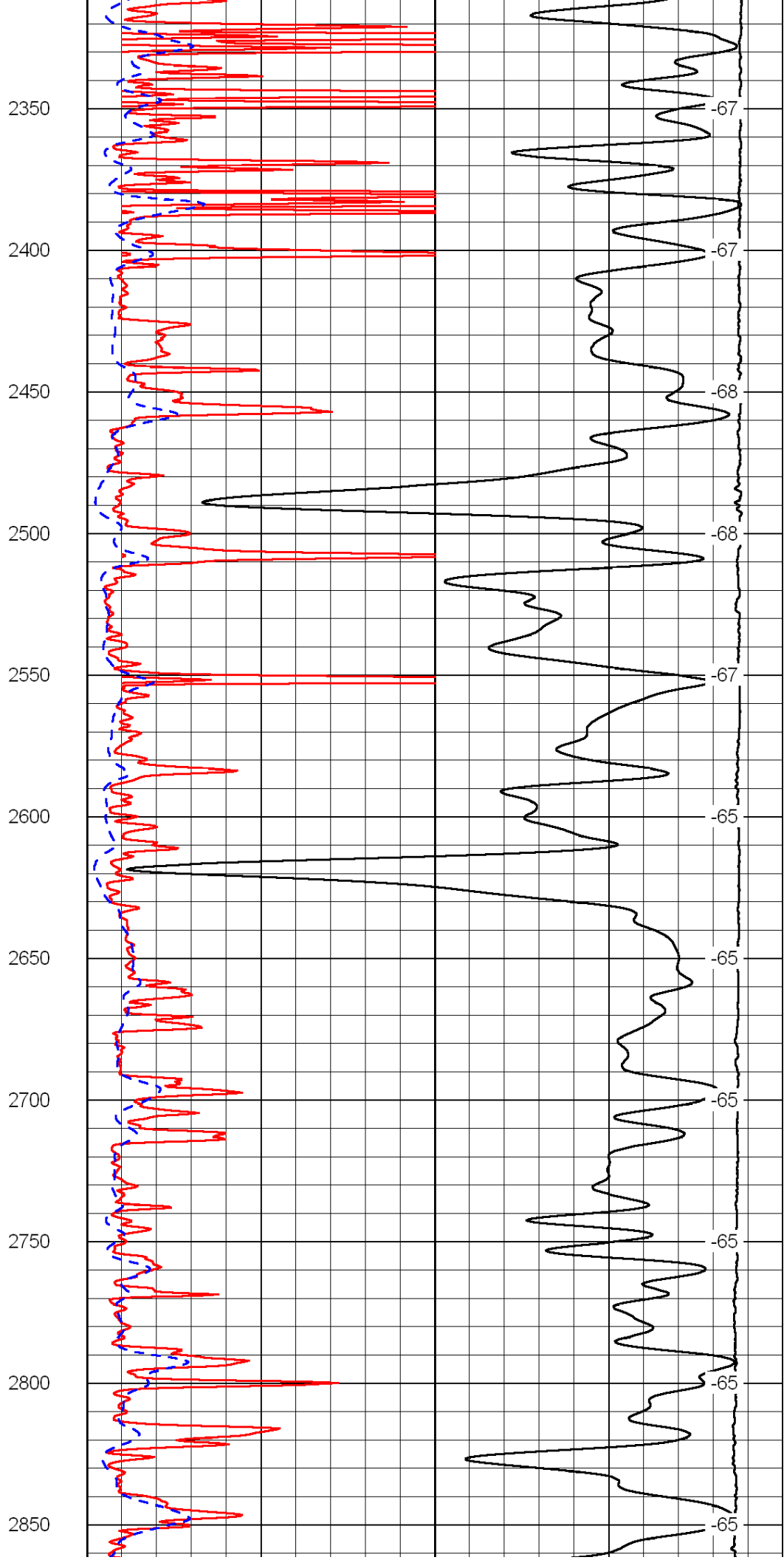
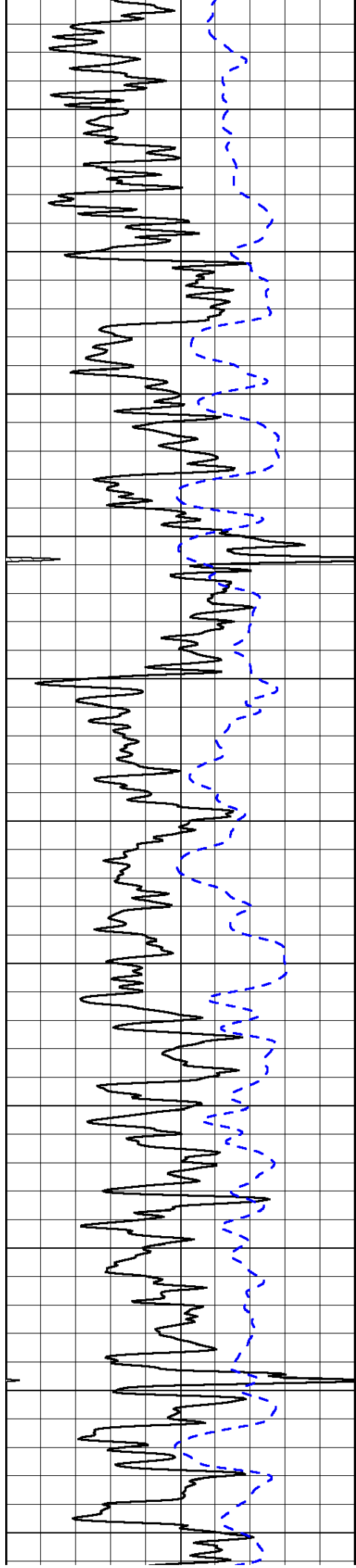
50	Shallow Resistivity	500
50	Deep Resistivity	500

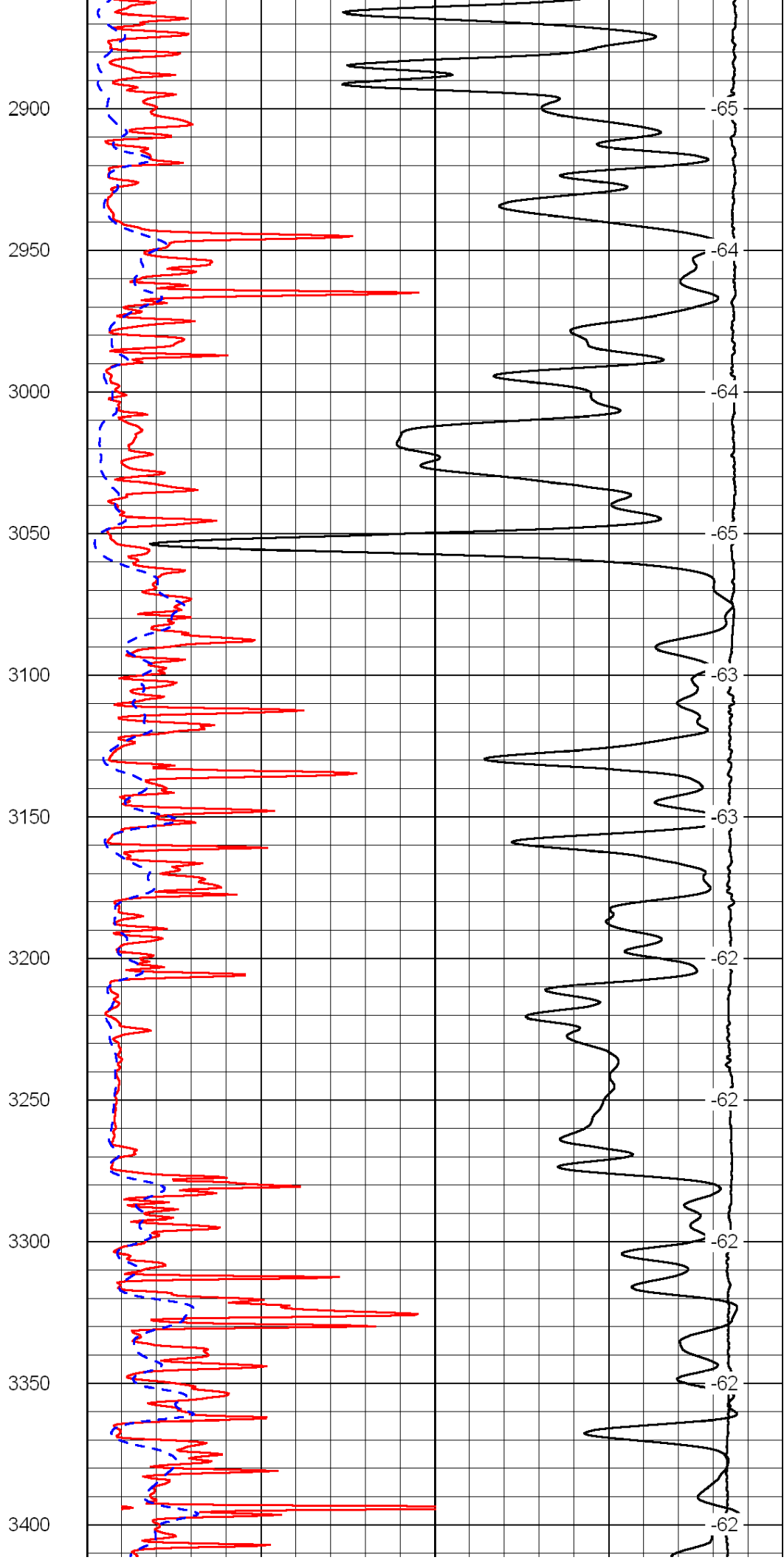
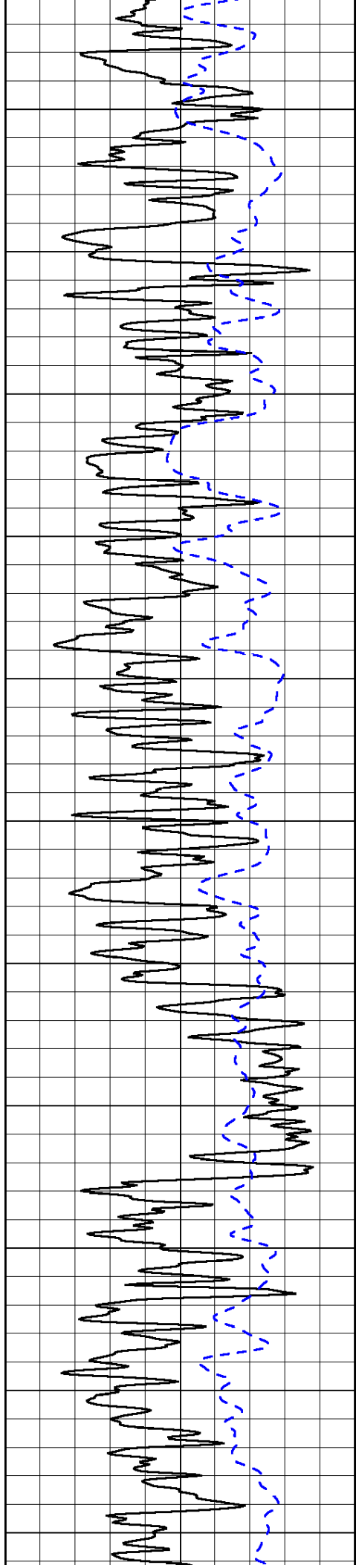


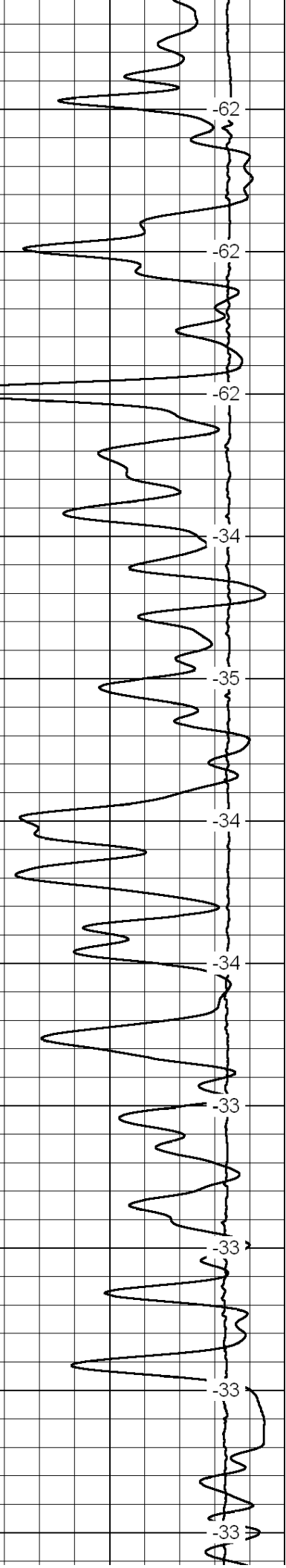
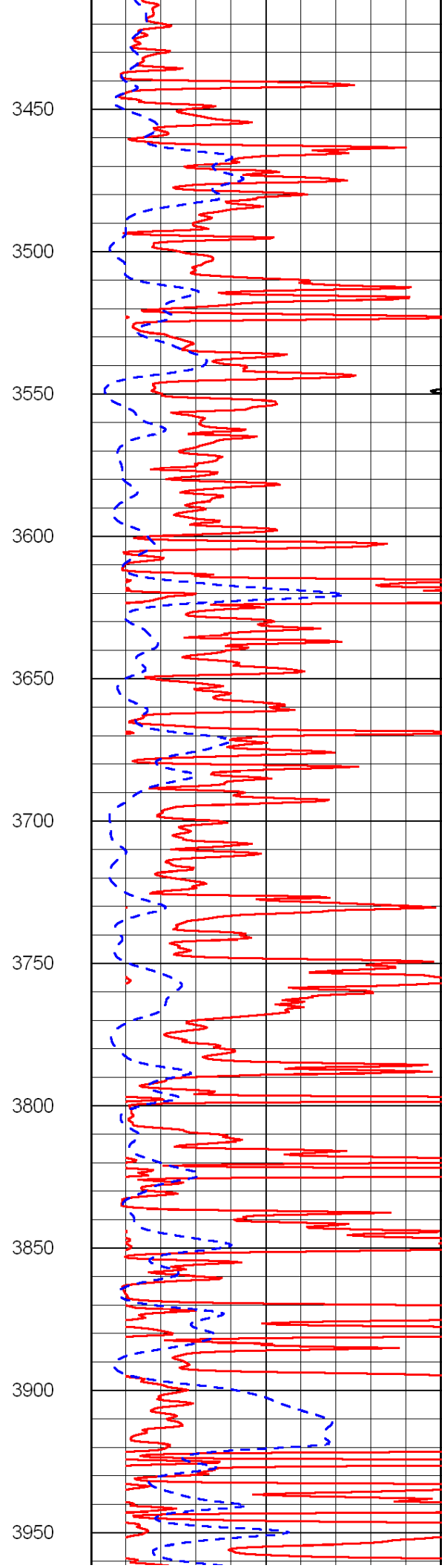
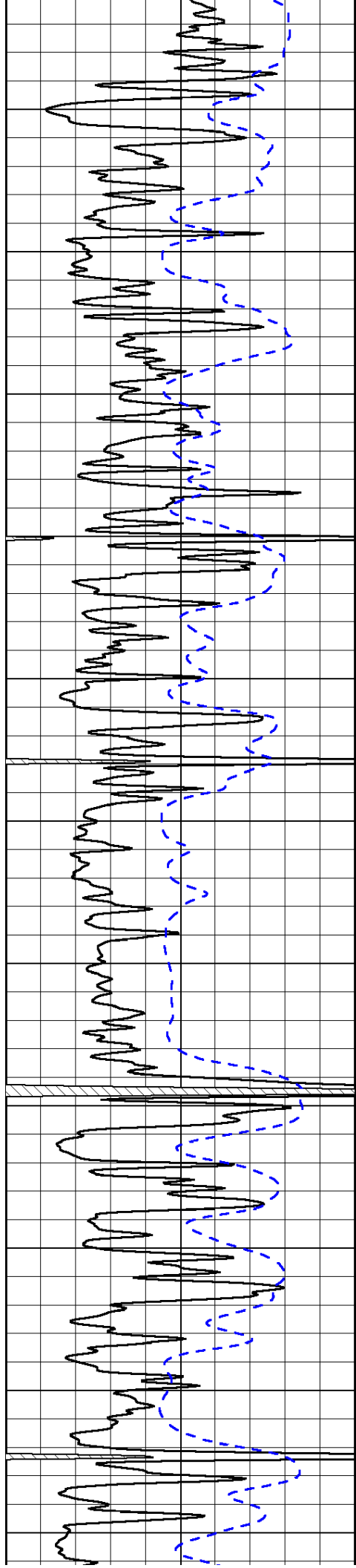


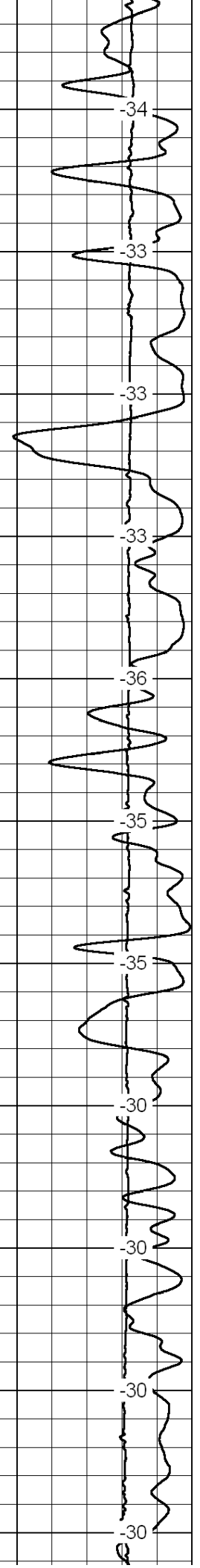
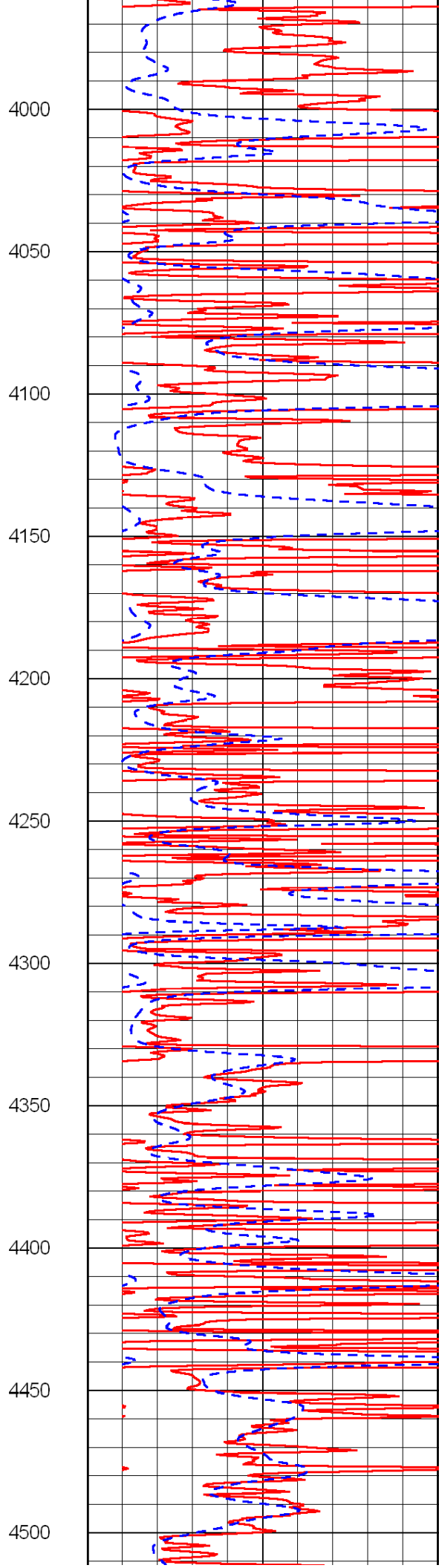
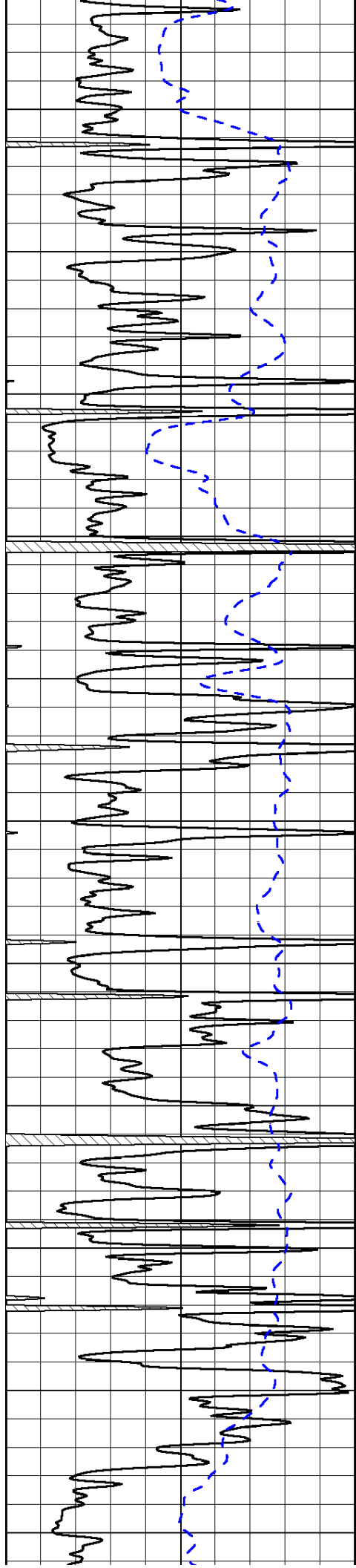


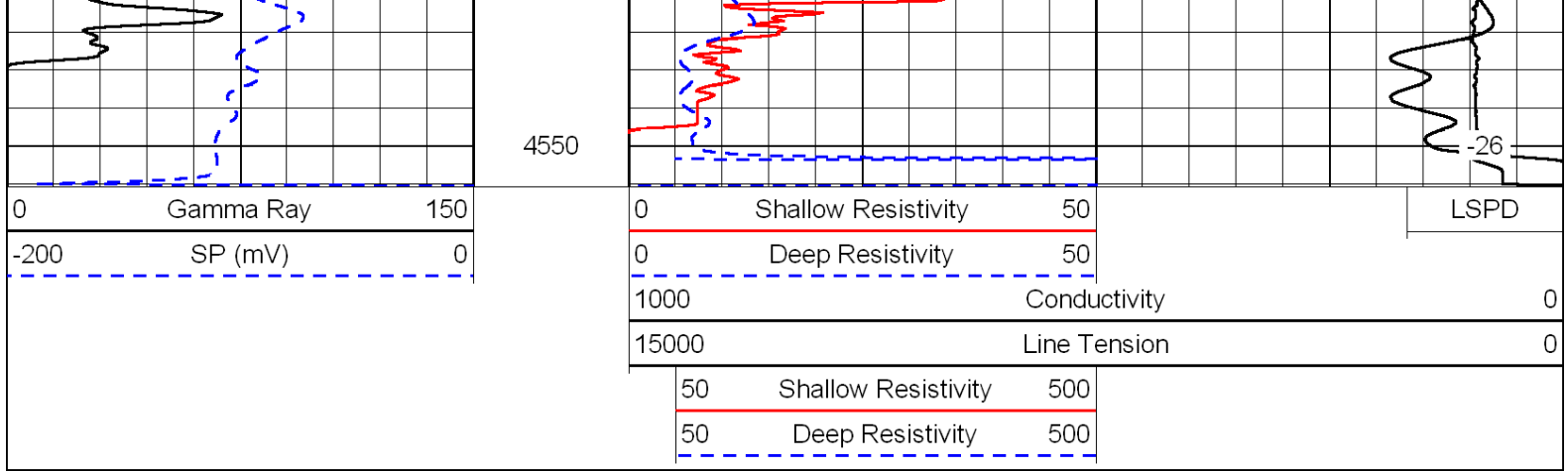




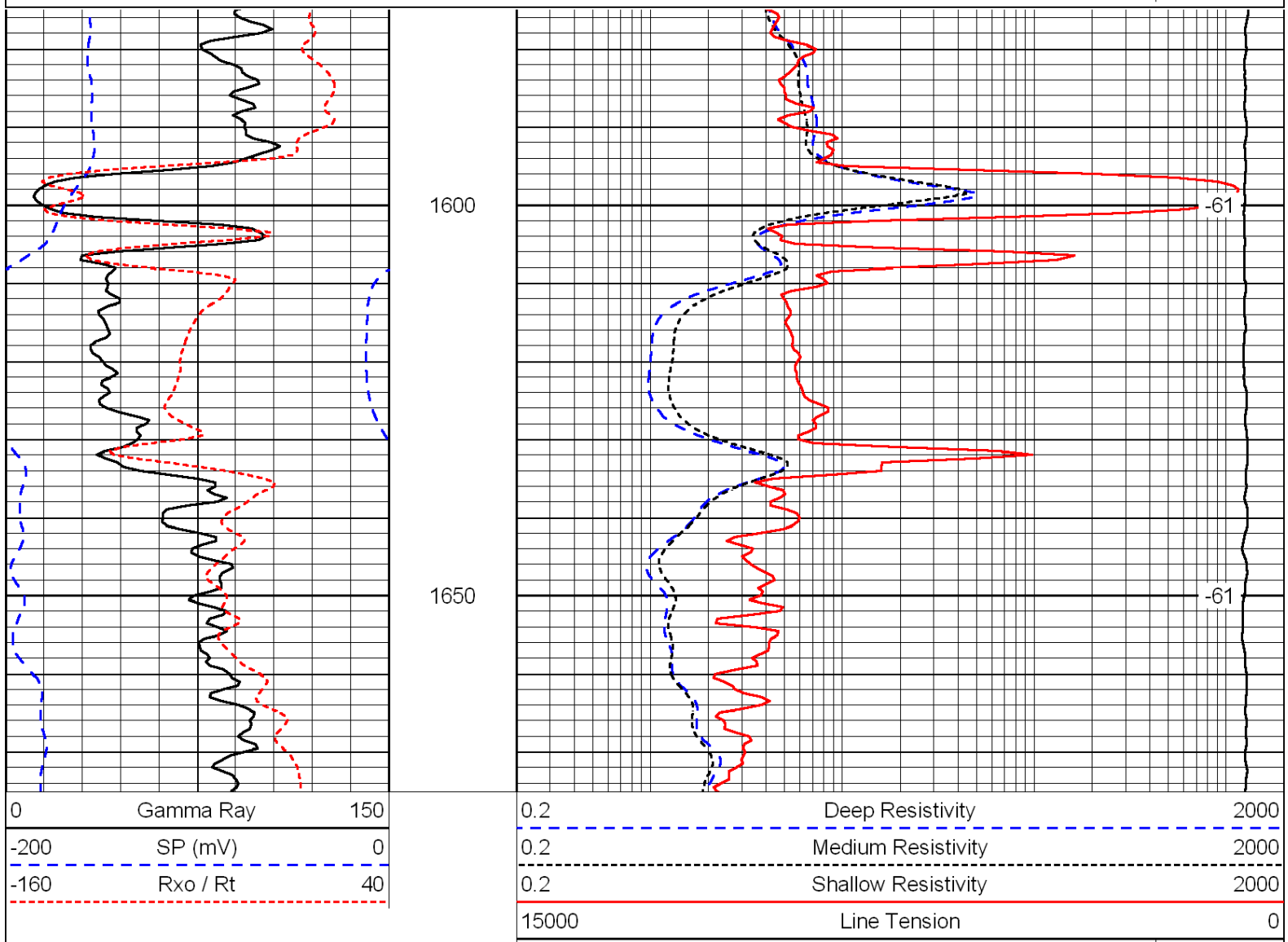
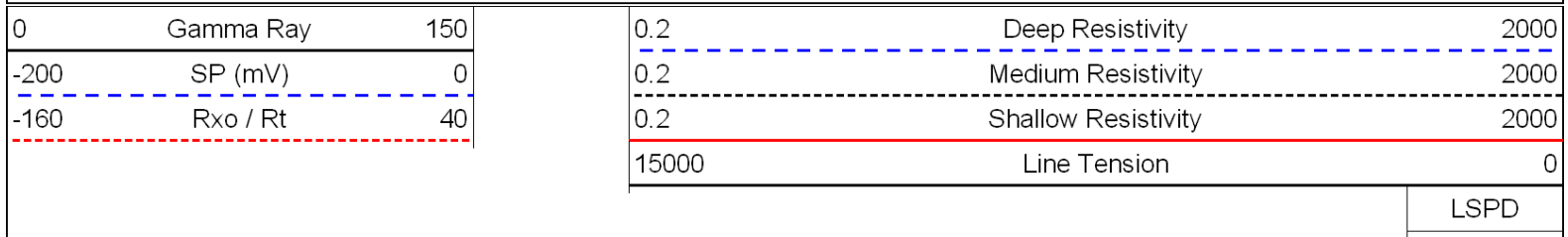








Database File: c:\warrior\data\amwar_miner c no. 5-13\amwarrhd.db
 Dataset Pathname: dil/awstck
 Presentation Format: dil
 Dataset Creation: Mon Aug 23 08:41:24 2010
 Charted by: Depth in Feet scaled 1:240

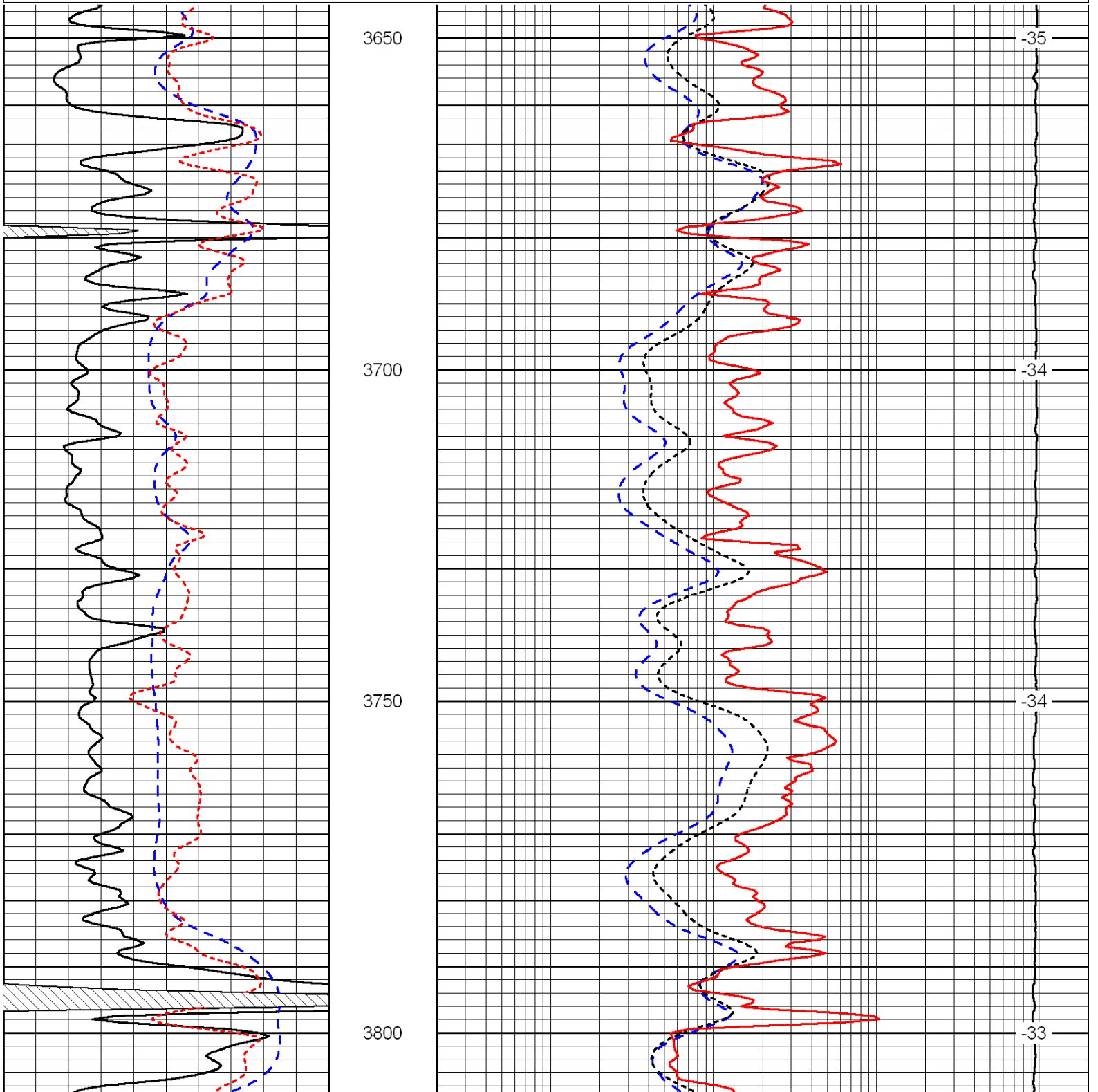


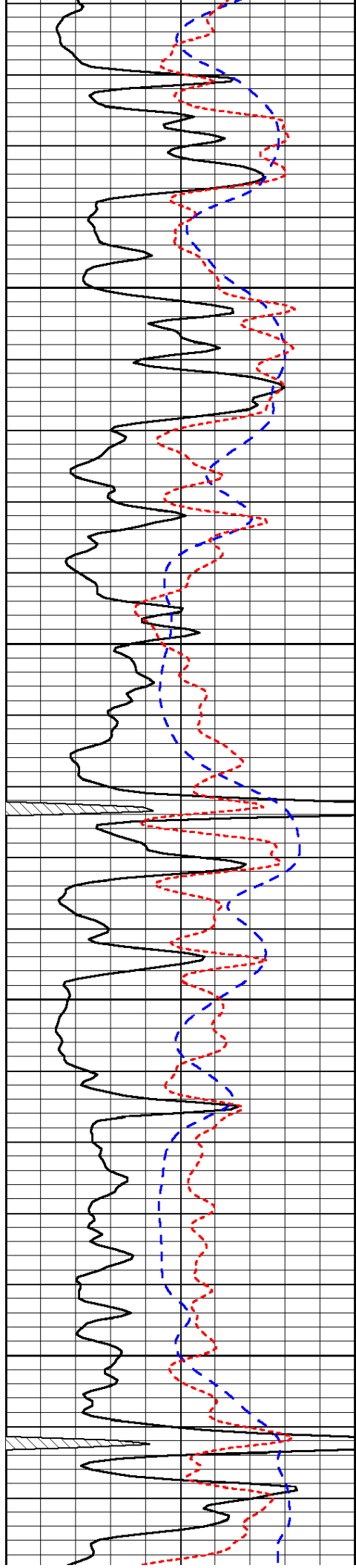
Database File: c:\warrior\data\amwar_miner c no. 5-13\amwarrhd.db
 Dataset Pathname: dil/awstck
 Presentation Format: dil
 Dataset Creation: Mon Aug 23 08:41:24 2010
 Charted by: Depth in Feet scaled 1:240

0	Gamma Ray	150
-200	SP (mV)	0
-160	Rxo / Rt	40

0.2	Deep Resistivity	2000
0.2	Medium Resistivity	2000
0.2	Shallow Resistivity	2000
15000	Line Tension	0

LSPD



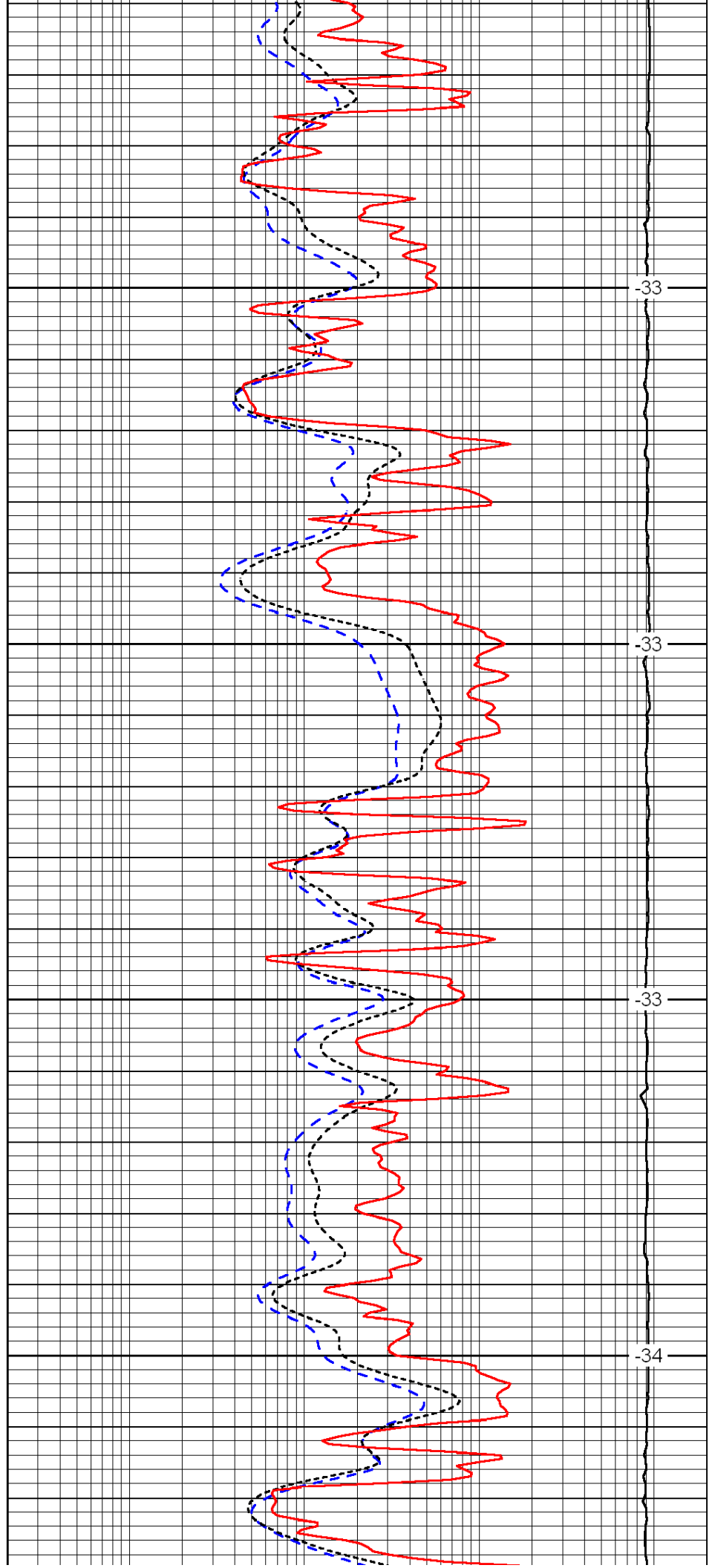


3850

3900

3950

4000

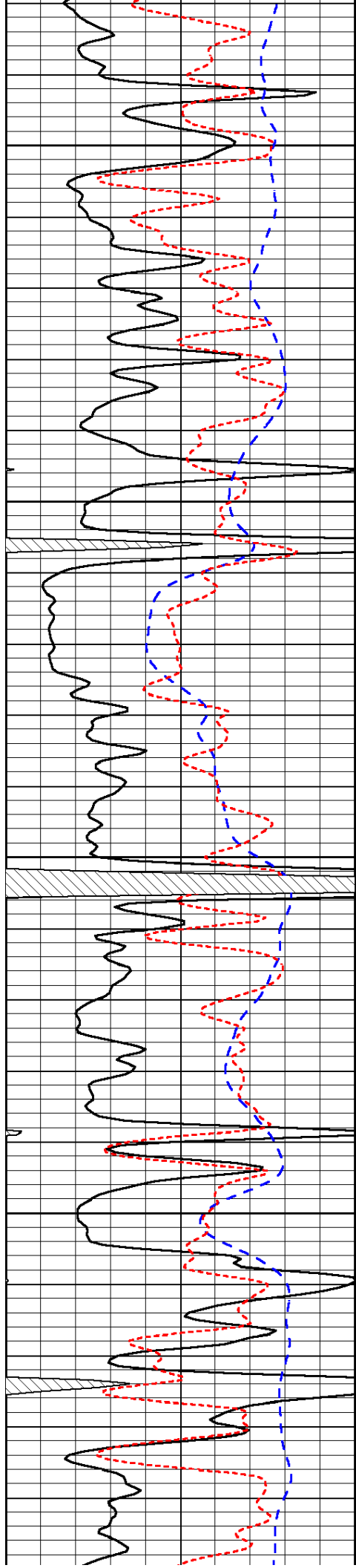


-33

-33

-33

-34



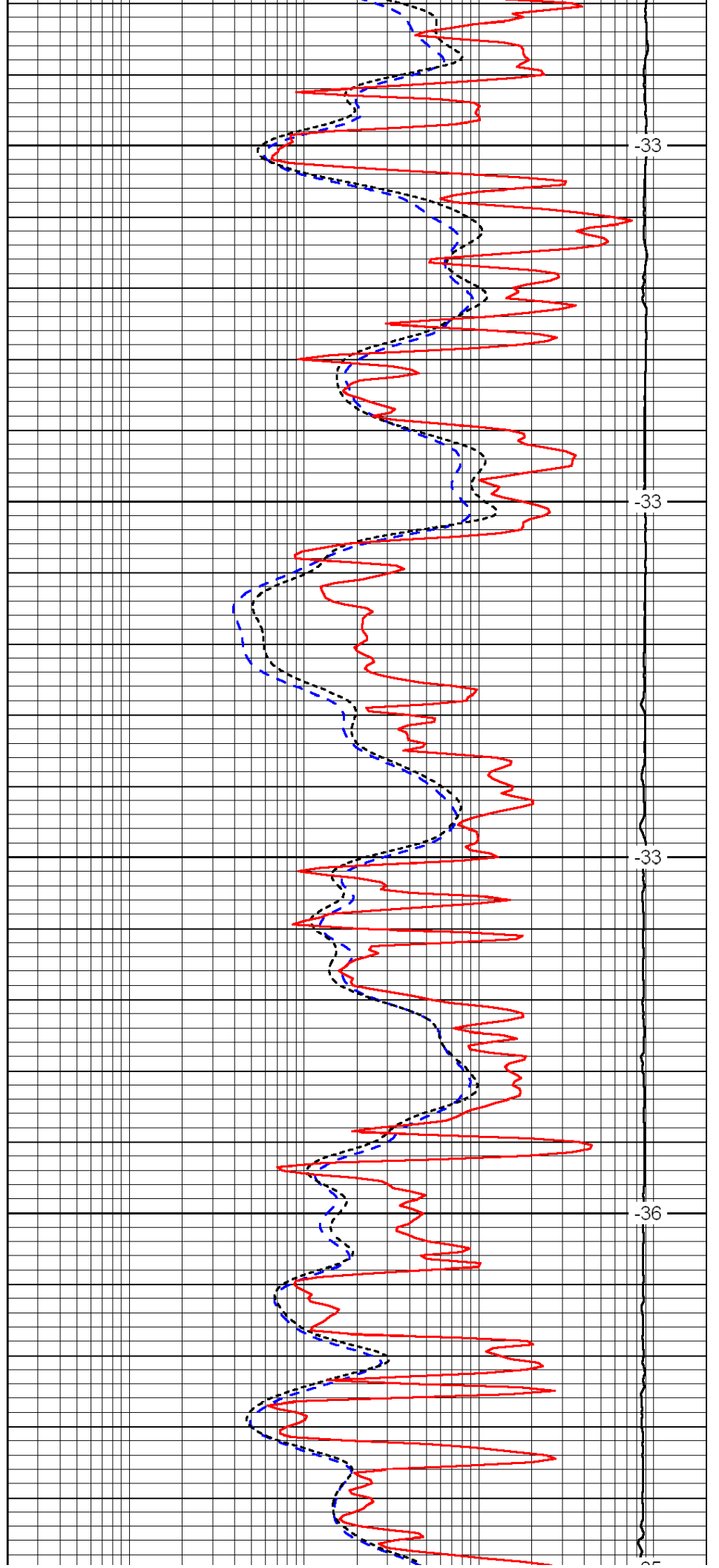
4050

4100

4150

4200

4250



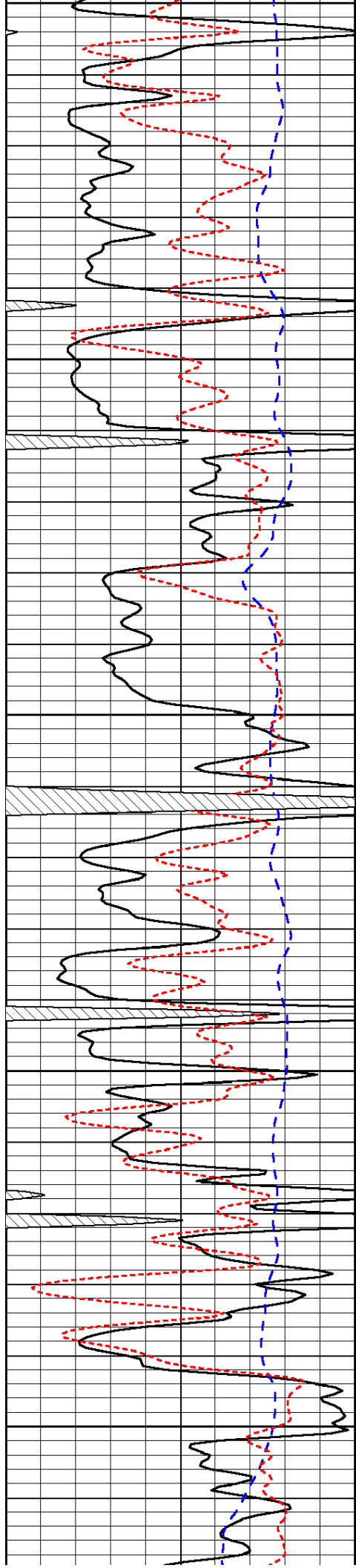
-33

-33

-33

-36

-31



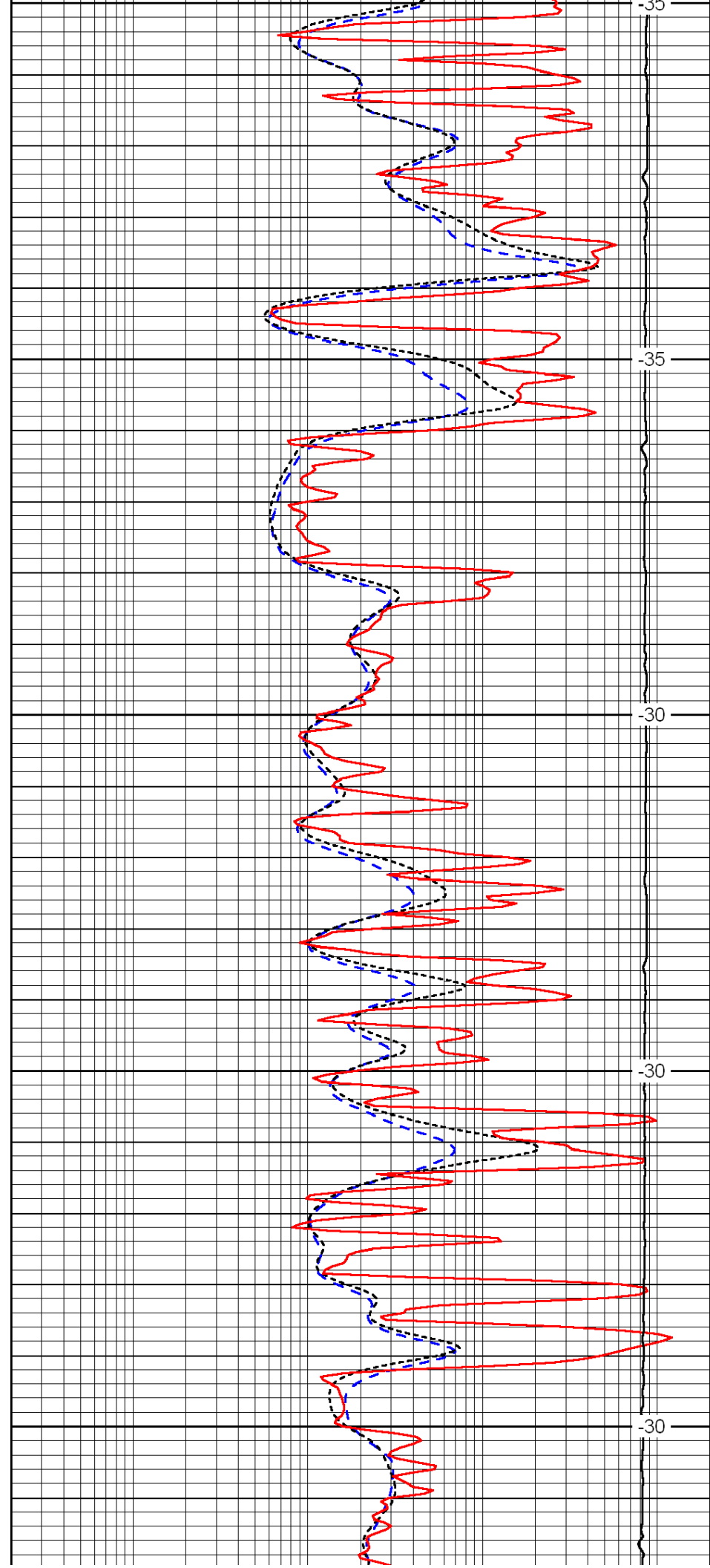
4250

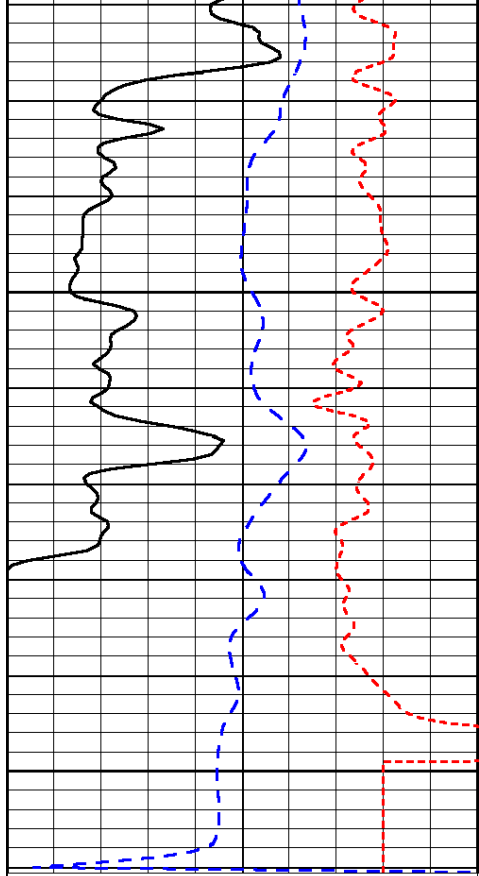
4300

4350

4400

4450

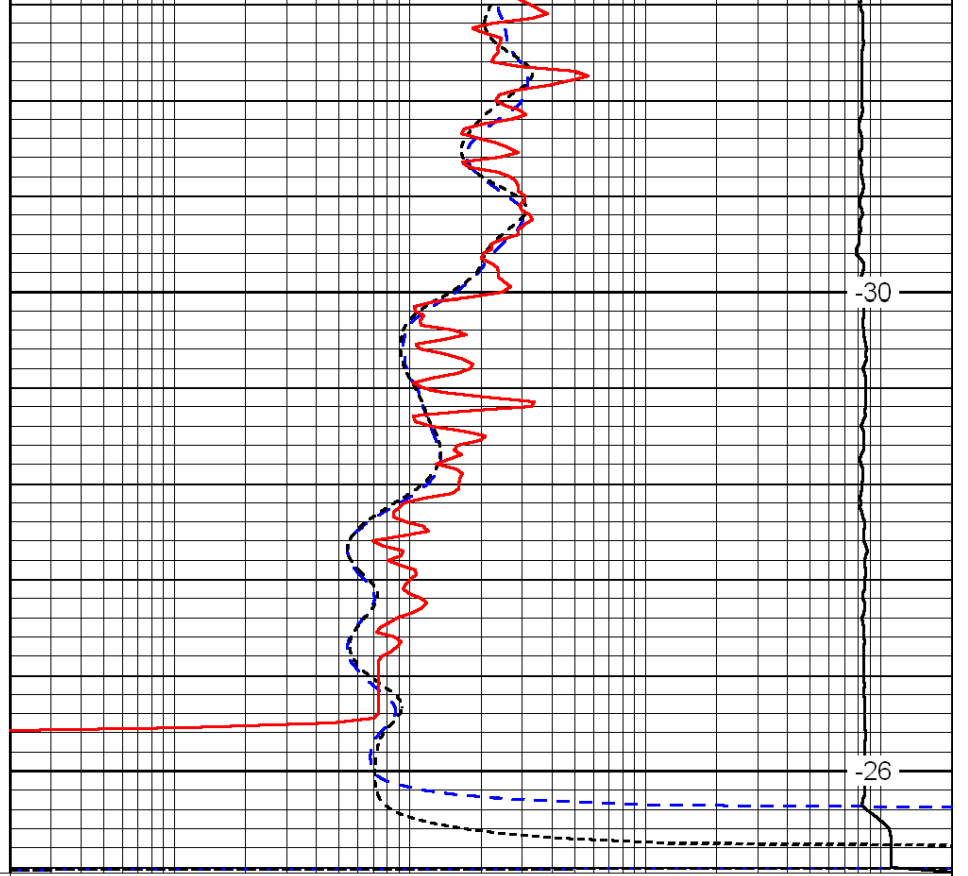




0	Gamma Ray	150
-200	SP (mV)	0
-160	Rxo / Rt	40

4500

4550



0.2	Deep Resistivity	2000
0.2	Medium Resistivity	2000
0.2	Shallow Resistivity	2000
15000	Line Tension	0

-30

-26

LSPD