



Microresistivity Log

DIGITAL LOG (785) 625-3858

API No.	15-065-23,664-00-00		
Company	McCoy Petroleum Corporation		
Well	Riedel "A" No. 1-33		
Field	Wildcat		
County	Graham	State	Kansas
Location	330' FNL & 1650' FWL		
Sec: 33	Twp: 10S	Rge: 25W	
Permanent Datum	Ground Level	Elevation	2458
Log Measured From	Kelly Bushing	11 Ft. Above Perm. Datum	
Drilling Measured From	Kelly Bushing		
		Other Services	CNL/CDL DIL
		Elevation	K.B. 2469 D.F. 2458 G.L. 2458

Date	07/24/2010
Run Number	Two
Depth Driller	4079
Depth Logger	4077
Bottom Logged Interval	4076
Top Log Interval	3400
Casing Driller	8.625 @ 215
Casing Logger	214
Bit Size	7.875
Type Fluid in Hole	Chemical
Salinity, ppm CL	2,500
Density / Viscosity	9.3 70
pH / Fluid Loss	9.0 8.8
Source of Sample	Flowline
Rm @ Meas. Temp	1.1 @ 80
Rmf @ Meas. Temp	.82 @ 80
Rmc @ Meas. Temp	1.48 @ 80
Source of Rmf / Rmc	Charts
Rm @ BHT	.08 @ 119
Operating Rig Time	3 Hours
Max Rec. Temp. F	119
Equipment Number	17
Location	Hays
Recorded By	Jason Wellbrock
Witnessed By	Robert Hendrix

<<< Fold Here >>>

All interpretations are opinions based on inferences from electrical or other measurements and we cannot and do not guarantee the accuracy or correctness of any interpretation, and we shall not, except in the case of gross or willful negligence on our part, be liable or responsible for any loss, costs, damages, or expenses incurred or sustained by anyone resulting from any interpretation made by any of our officers, agents or employees. These interpretations are also subject to our general terms and conditions set out in our current Price Schedule.

Comments

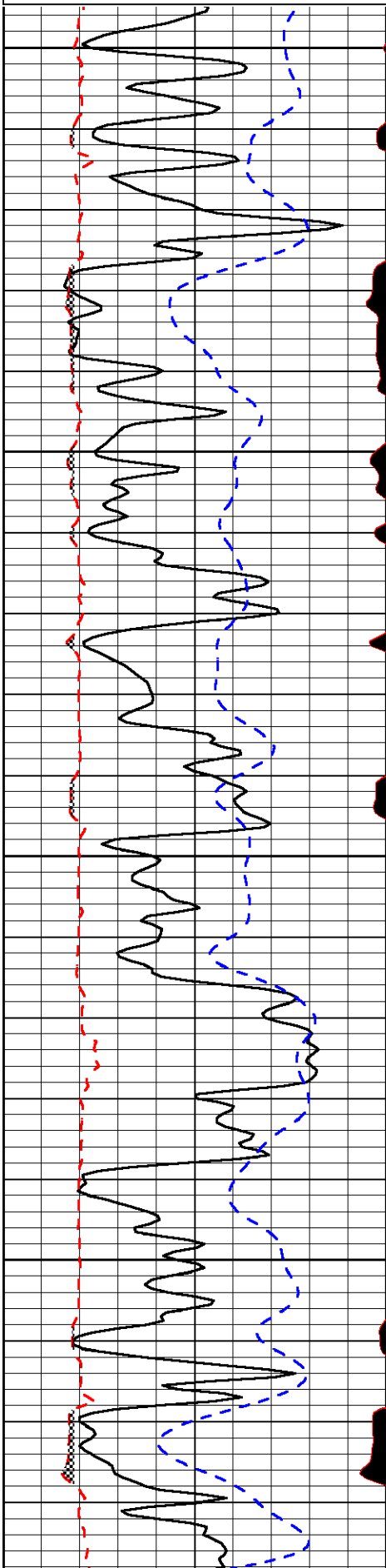
Thank you for using Log-Tech, Inc.
(785) 625-3858

Collyer and I-70 Exit, 1/2N, 1 1/2E, 7N, 1 1/2W, S Into

Database File: mccoymhd.db
 Dataset Pathname: dil/mccoym2in
 Presentation Format: micro
 Dataset Creation: Sat Jul 24 13:13:54 2010
 Charted by: Depth in Feet scaled 1:240

0	Gamma Ray	150
6	MCAL (GAPI)	16
2.875	Mud Cake (GAPI)	7.875
-200	SP	0

0	Micro Inverse 1 X 1	40
0	Micro Normal 2"	40
10000	Line Weight	0
		LSPD

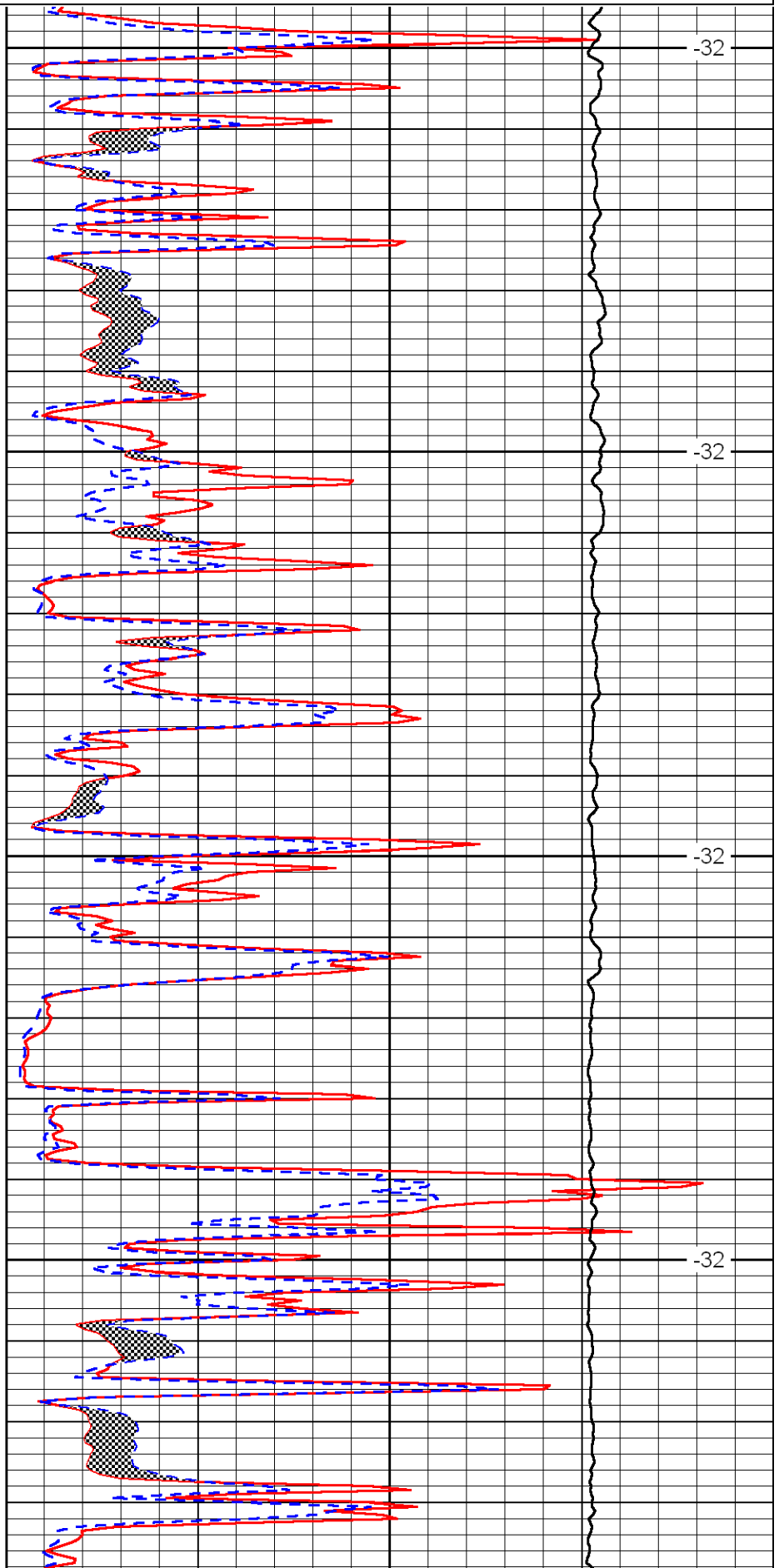


3400

3450

3500

3550

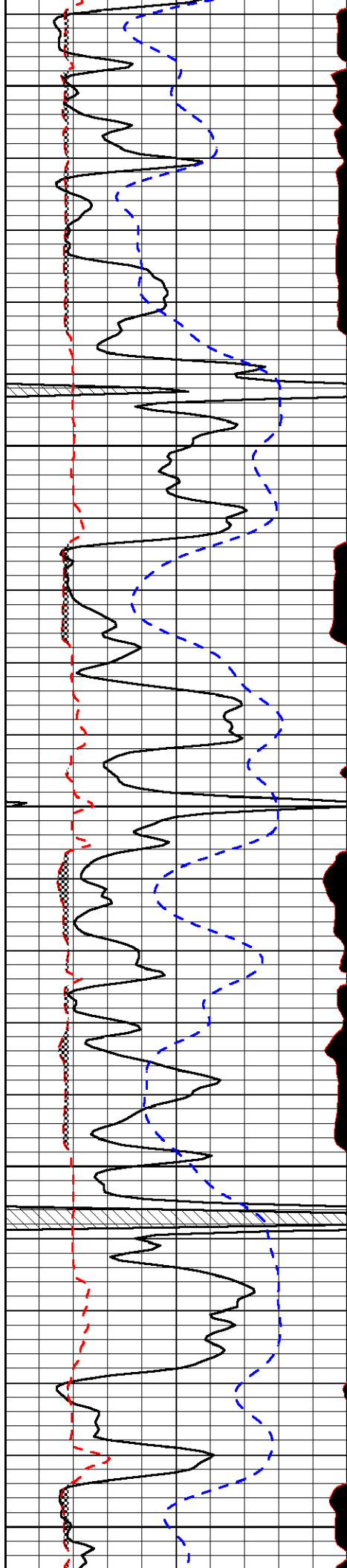


-32

-32

-32

-32



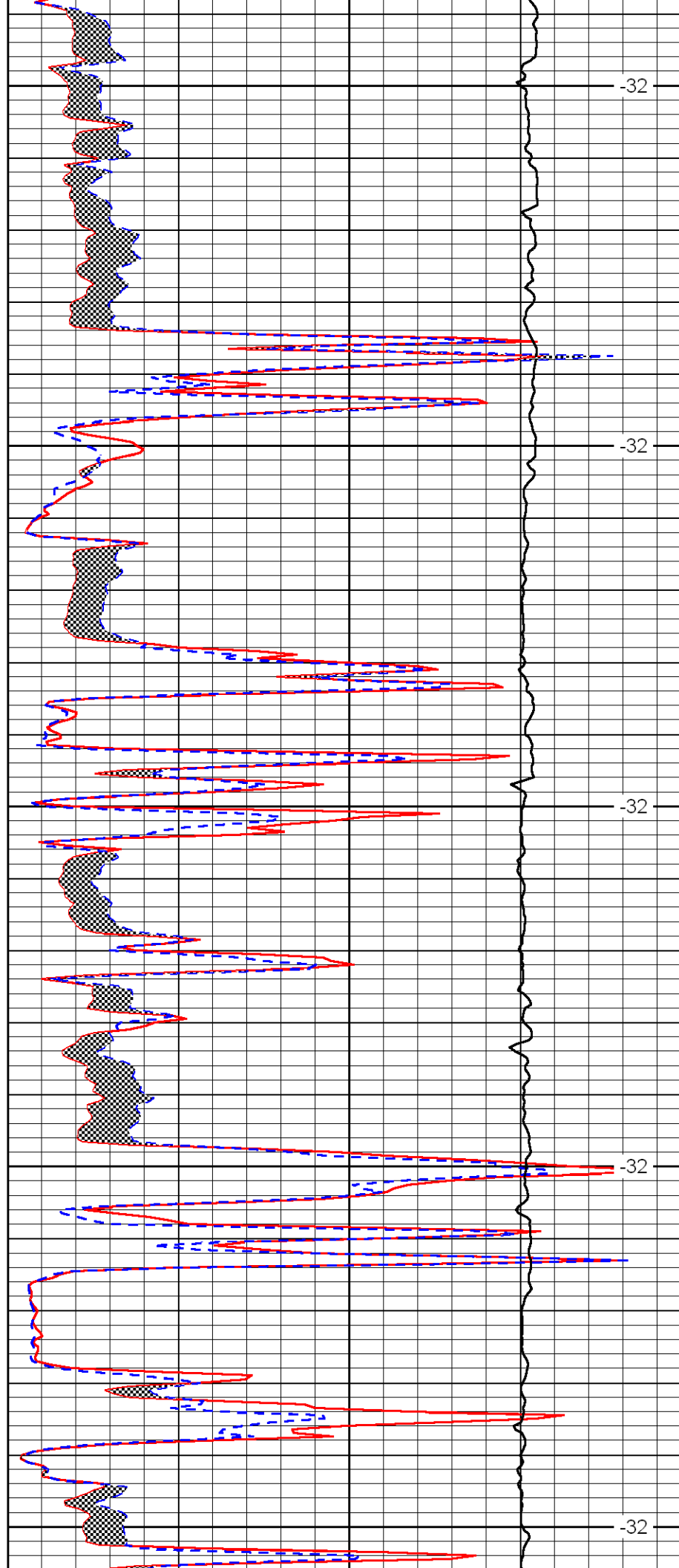
3600

3650

3700

3750

3800



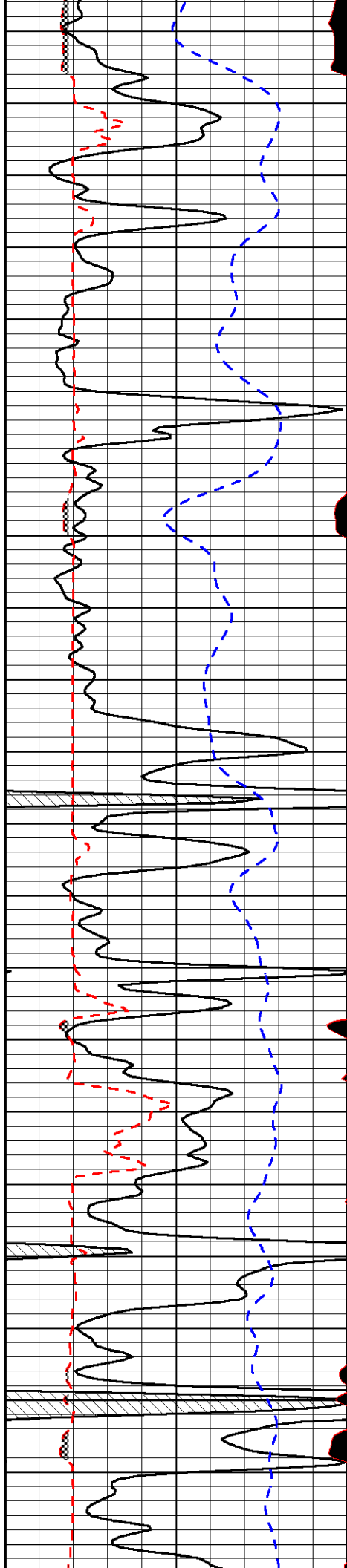
-32

-32

-32

-32

-32

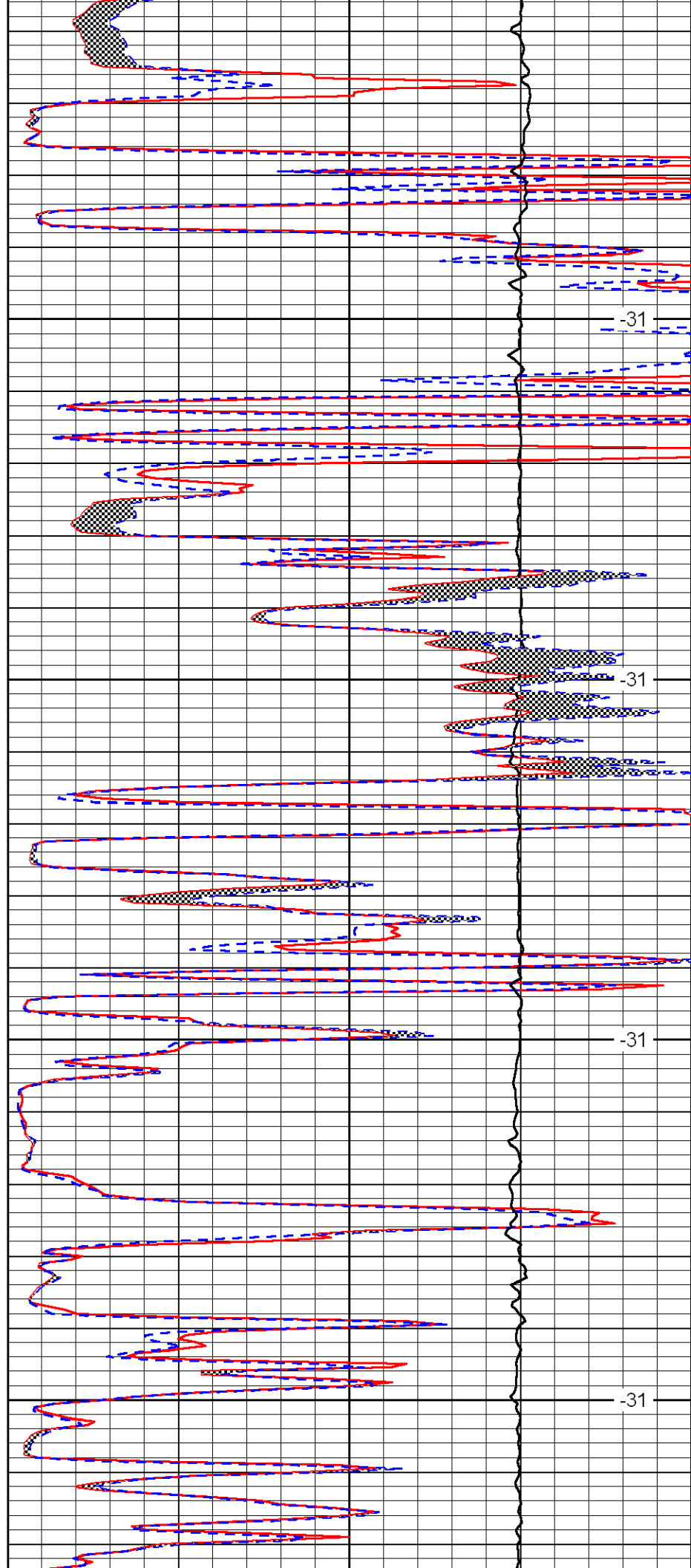


3850

3900

3950

4000

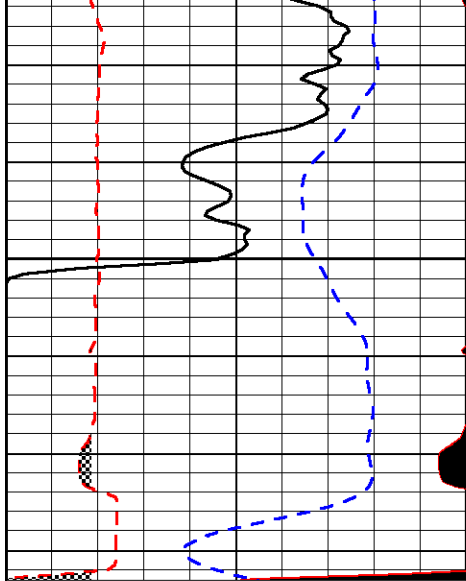


-31

-31

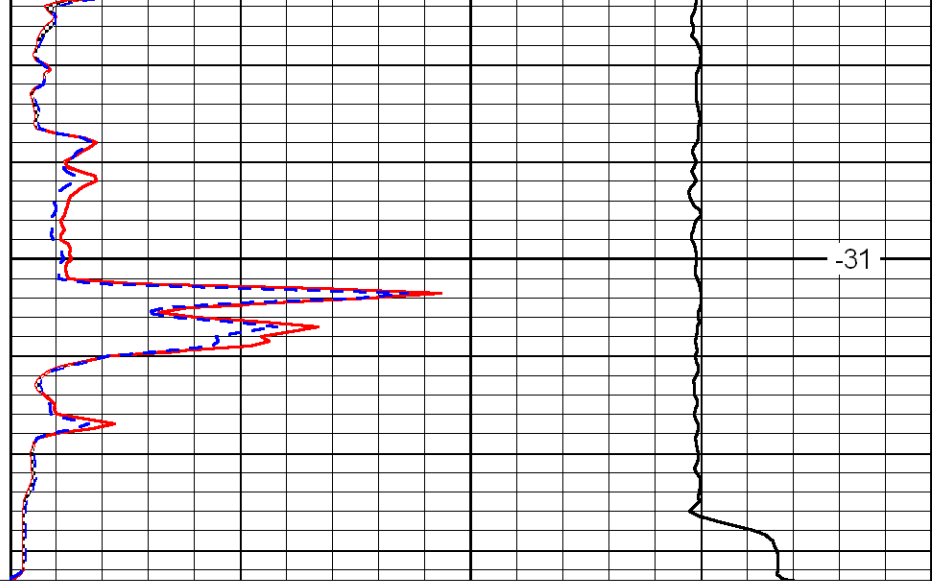
-31

-31



0	Gamma Ray	150
6	MCAL (GAPI)	16
2.875	Mud Cake (GAPI)	7.875
-200	SP	0

4050



0	Micro Inverse 1 X 1	40
0	Micro Normal 2''	40
10000	Line Weight	0

-31

LSPD