



Dual Compensated  
Porosity Log

DIGITAL LOG (785) 625-3858

API No. 15-065-23,664-00-00

Company **McCoy Petroleum Corporation**  
 Well **Riedel "A" No. 1-33**  
 Field **Wildcat**  
 County **Graham** State **Kansas**

Location **330' FNL & 1650' FWL**

Sec: **33** Twp: **10S** Rge: **25W**

Other Services  
DIL/MEL

Permanent Datum **Ground Level** Elevation **2458**  
 Log Measured From **Kelly Bushing** 11 Ft. Above Perm. Datum  
 Drilling Measured From **Kelly Bushing**

K.B. 2469  
 D.F. G.L. 2458

Date **07/24/2010**

Run Number **One**

Type Log **CNL / CDL**

Depth Driller **4079**

Depth Logger **4077**

Bottom Logged Interval **4056**

Top Logged Interval **3400**

Type Fluid In Hole **Chemical**

Salinity, PPM CL **2,500**

Density **9.3**

Level **Full**

Max. Rec. Temp. F **119**

Operating Rig Time **3 Hours**

Equipment -- Location **17 Hays**

Recorded By **Jason Wellbrock**

Witnessed By **Robert Hendrix**

Borehole Record				Casing Record			
Run No	Bit	From	To	Size	Wgt.	From	To
One	12.25	00	215	8.625	23#	00	215
Two	7.875	215	TD				

<<< Fold Here >>>

All interpretations are opinions based on inferences from electrical or other measurements and we cannot and do not guarantee the accuracy or correctness of any interpretation, and we shall not, except in the case of gross or willful negligence on our part, be liable or responsible for any loss, costs, damages, or expenses incurred or sustained by anyone resulting from any interpretation made by any of our officers, agents or employees. These interpretations are also subject to our general terms and conditions set out in our current Price Schedule.

Comments

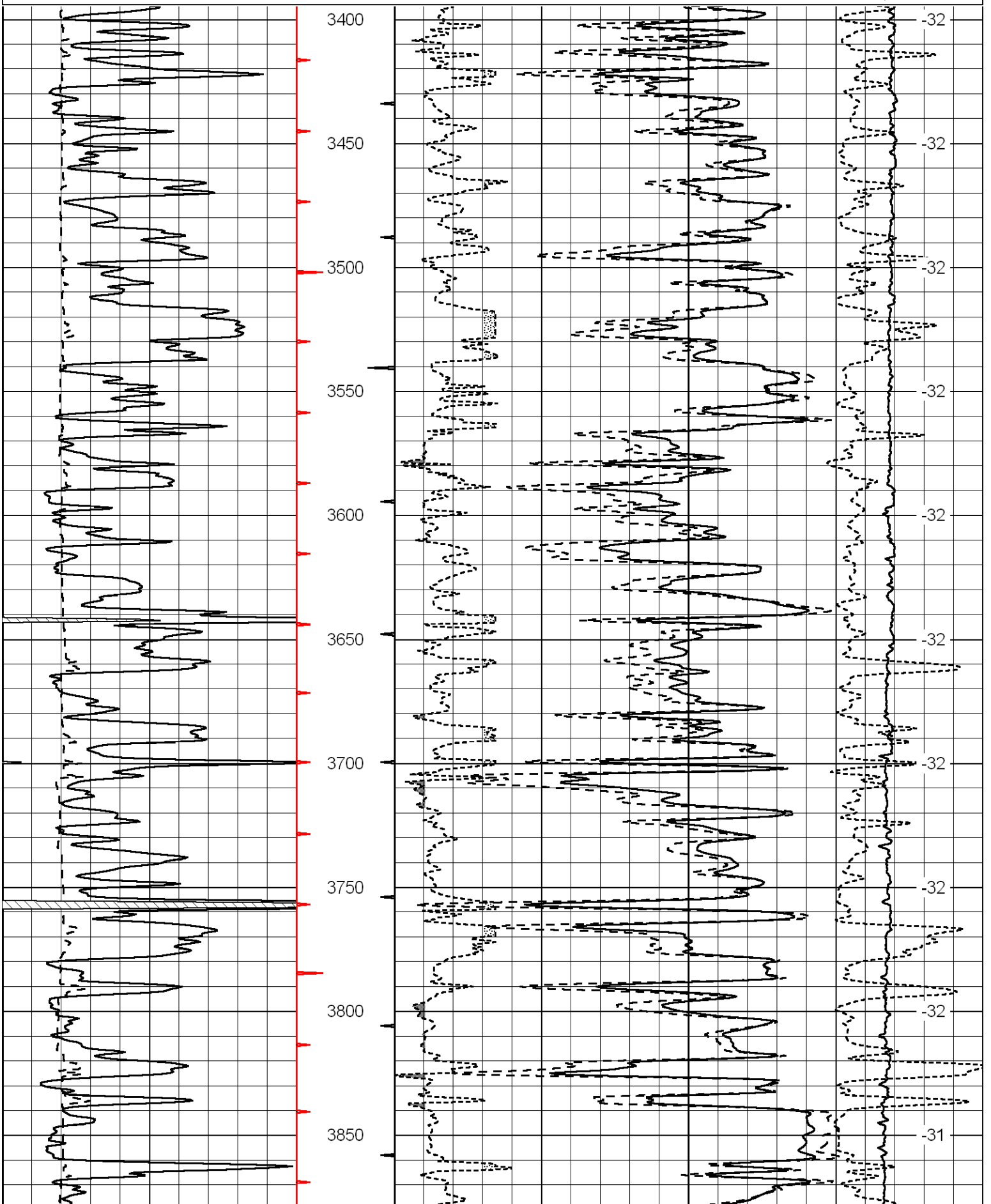
Thank you for using Log-Tech, Inc.  
 (785) 625-3858

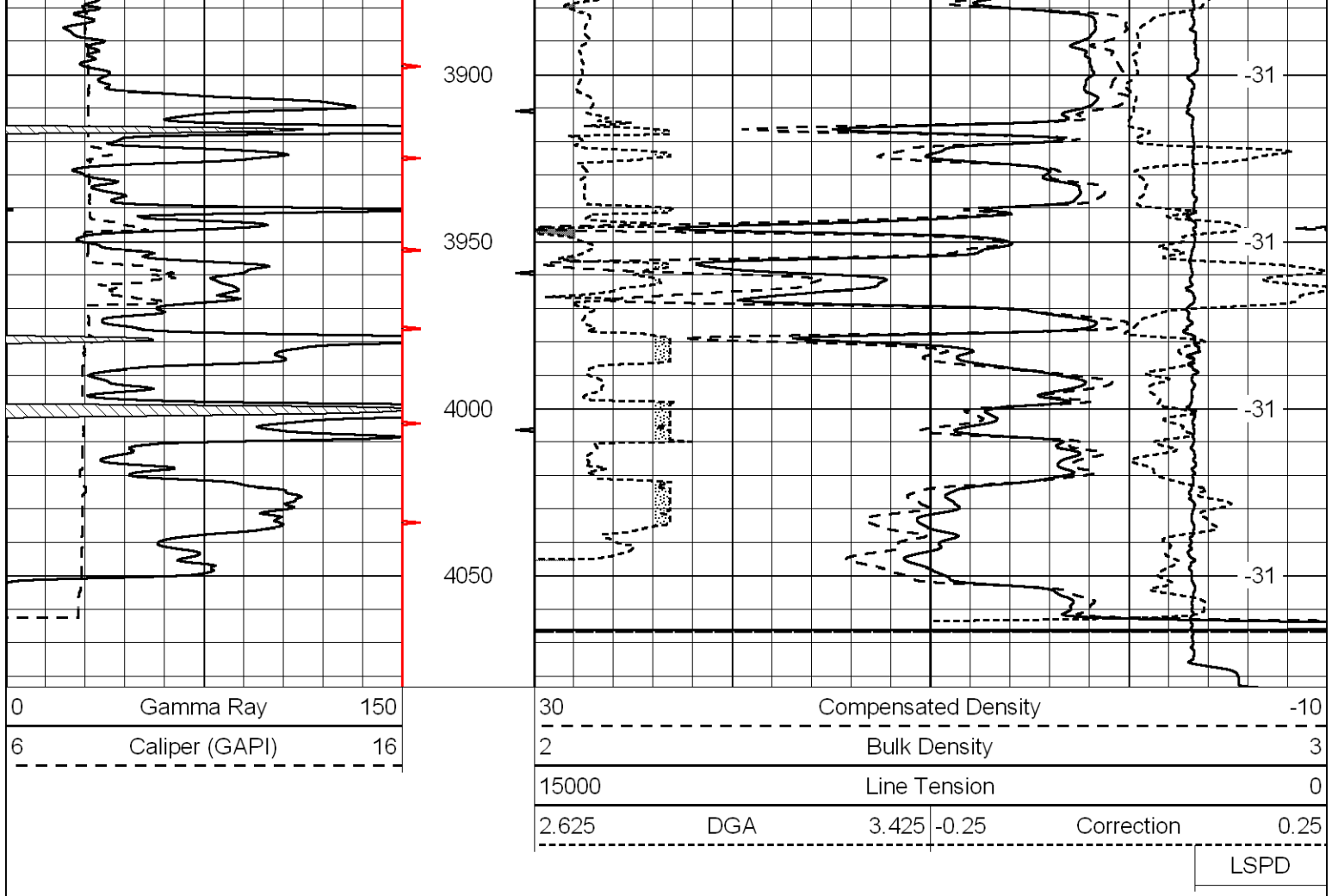
Collyer and I-70 Exit, 1/2N, 1 1/2E, 7N, 1 1/2W, S Into

Database File: mccoymhd.db  
 Dataset Pathname: dil/mccoym2in  
 Presentation Format: cdl  
 Dataset Creation: Sat Jul 24 13:13:54 2010  
 Charted by: Depth in Feet scaled 1:600

0	Gamma Ray	150
6	Caliper (GAPI)	16

30	Compensated Density		-10
2	Bulk Density		3
15000	Line Tension		0
2.625	DGA	3.425	-0.25
Correction			0.25
LSPD			





Database File: mccoysdb  
 Dataset Pathname: dil/mccoys2in  
 Presentation Format: cndlspec  
 Dataset Creation: Sat Jul 24 13:13:54 2010  
 Charted by: Depth in Feet scaled 1:240

