



Microresistivity Log

DIGITAL LOG (785) 625-3858

API No. 15-025-21,507-00-00	Company Falcon Exploration, Inc.	Location SW NW SE NW 1,880' FNL & 1,330' FWL	Other Services CNL/CDL DIL/BHCS
	Well Giles Land No. 1-27		
	Field WC		
	County Clark	State Kansas	
		Sec: 27 Twp: 30S Rge: 22W	
		Elevation 2337	
		10 Ft. Above Perm. Datum	

Date	6/20/2010		
Run Number	Two		
Depth Driller	6025		
Depth Logger	6031		
Bottom Logged Interval	6030		
Top Log Interval	4000		
Casing Driller	8,625 @ 694		
Casing Logger	694		
Bit Size	7.875		
Type Fluid in Hole	Chemical		
Salinity, ppm CL	8100		
Density / Viscosity	9.3 47		
pH / Fluid Loss	10.5 9.6		
Source of Sample	Flowline		
Rm @ Meas. Temp	.48 @ 80		
Rmf @ Meas. Temp	.36 @ 80		
Rmc @ Meas. Temp	.65 @ 80		
Source of Rmf / Rmc	Charts		
Rm @ BHT	.27 @ 138		
Operating Rig Time	6 Hours		
Max Rec. Temp. F	138		
Equipment Number	10		
Location	Hays		
Recorded By	J. Long		
Witnessed By	Keith Reavis		

<<< Fold Here >>>

All interpretations are opinions based on inferences from electrical or other measurements and we cannot and do not guarantee the accuracy or correctness of any interpretation, and we shall not, except in the case of gross or willful negligence on our part, be liable or responsible for any loss, costs, damages, or expenses incurred or sustained by anyone resulting from any interpretation made by any of our officers, agents or employees. These interpretations are also subject to our general terms and conditions set out in our current Price Schedule.

Comments

Thank you for using Log-Tech, Inc.
(785) 625-3858

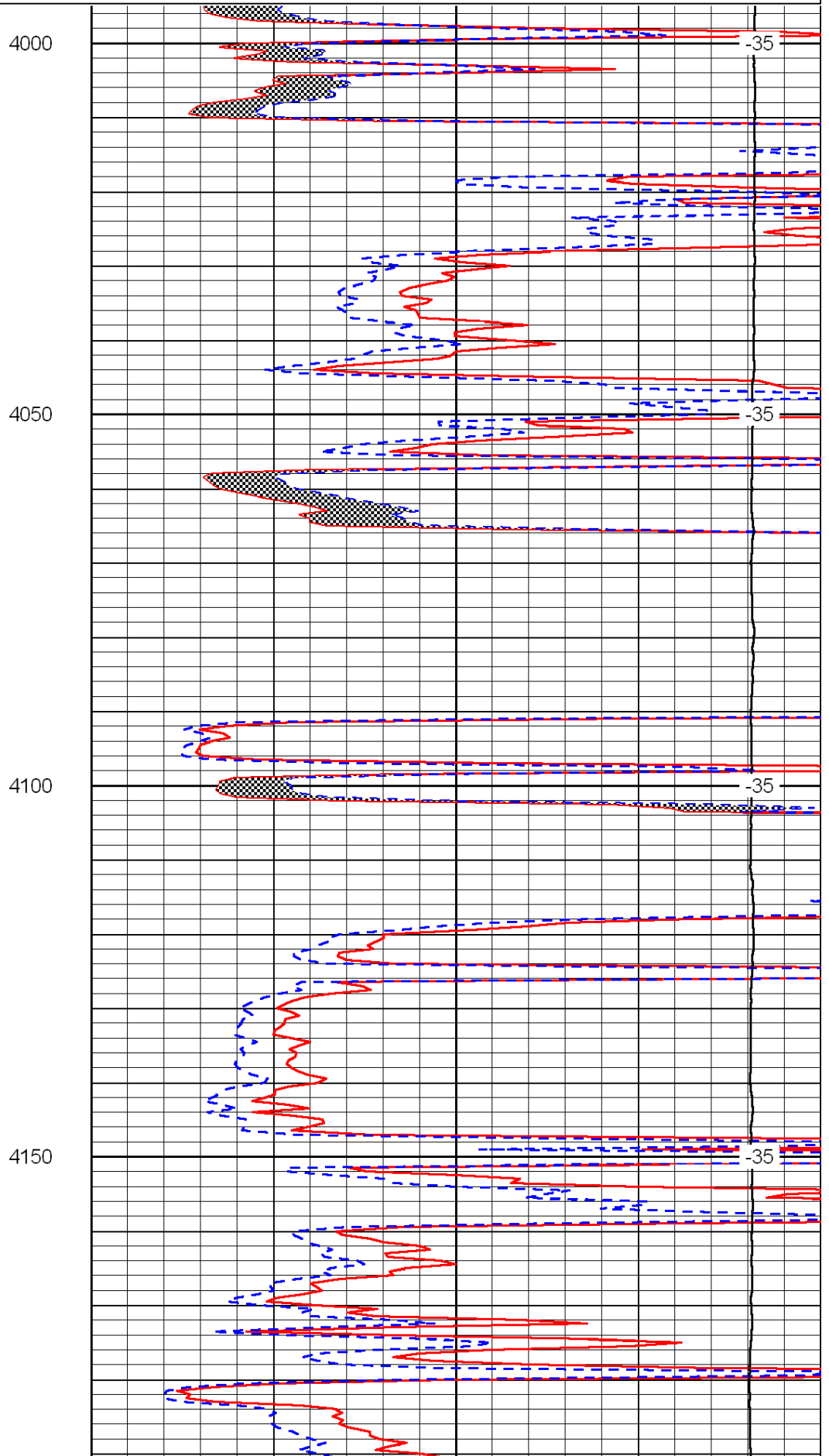
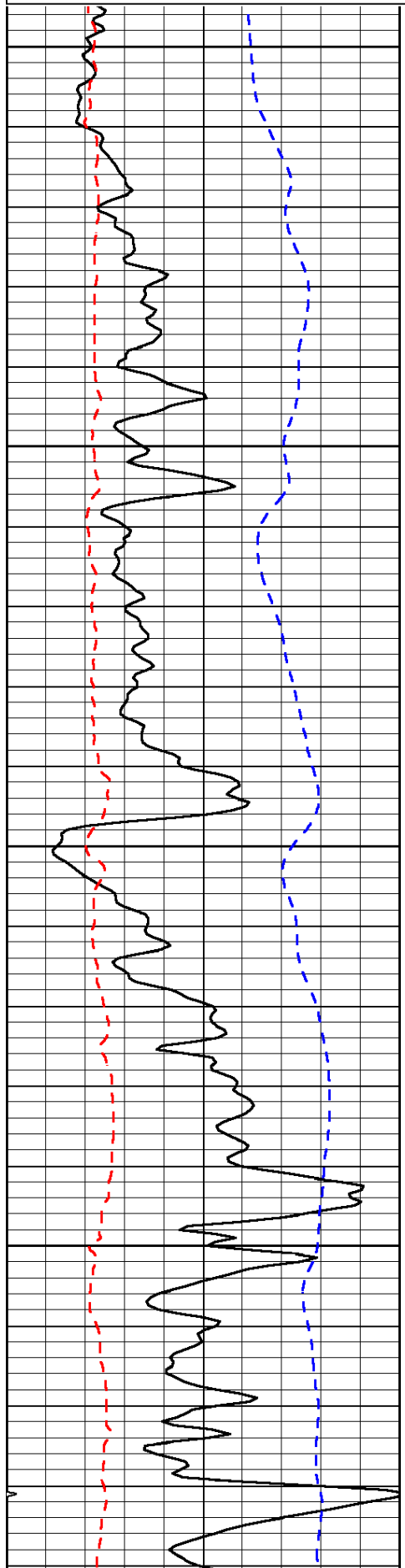
Kingsdown, 8 South to Rd E, 2 East, South Into

Database File: c:\warrior\data\falcon_giles land #1-27\falcon.db
 Dataset Pathname: dil/flcnstck
 Presentation Format: micro
 Dataset Creation: Sun Jun 20 09:12:45 2010
 Charted by: Depth in Feet scaled 1:240

0	Gamma Ray	150
6	Micro Log Caliper (GAPI)	16
-200	SP (mV)	0

0	Micro Inverse 1 X 1	40
0	Micro Normal 2"	40
15000	Line Weight	0

LSPD



4000

4050

4100

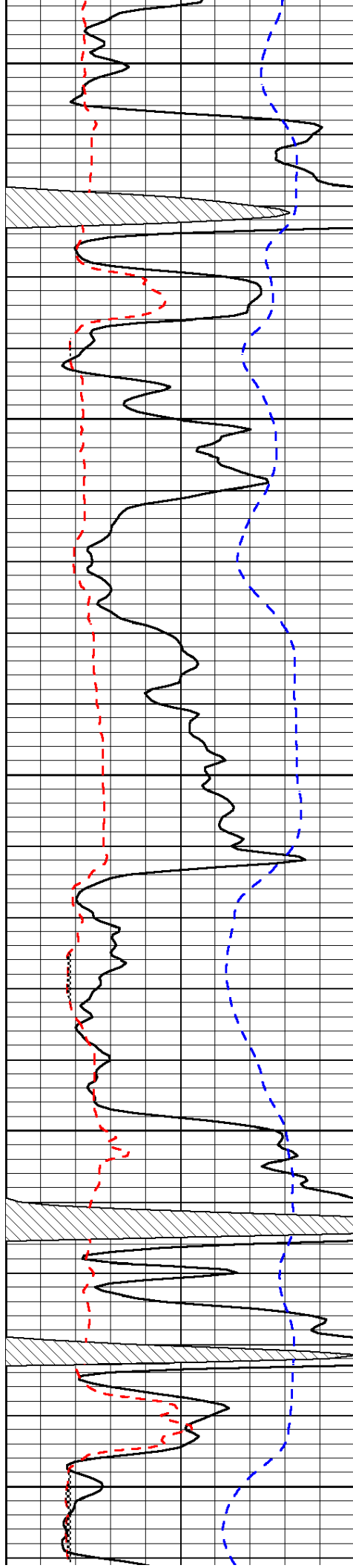
4150

-35

-35

-35

-35



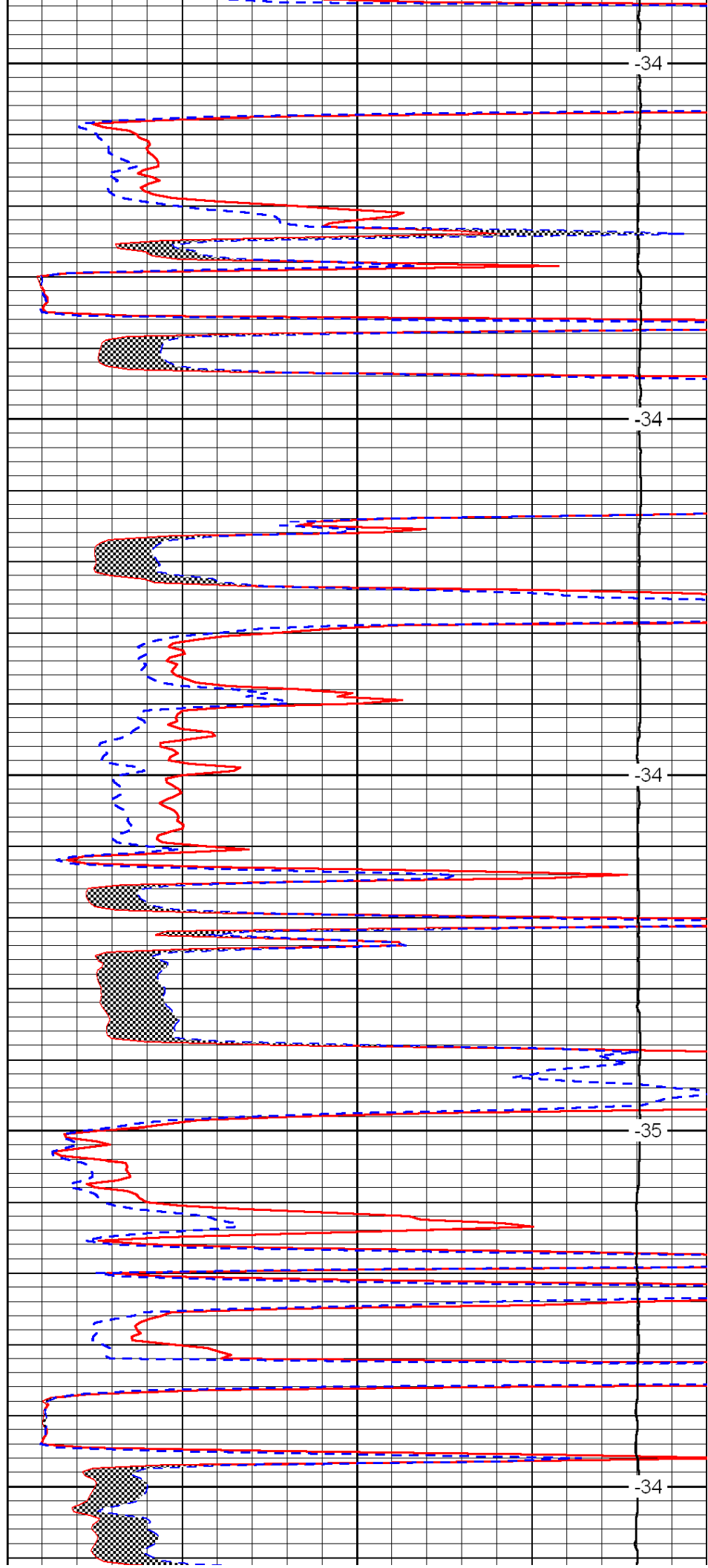
4200

4250

4300

4350

4400



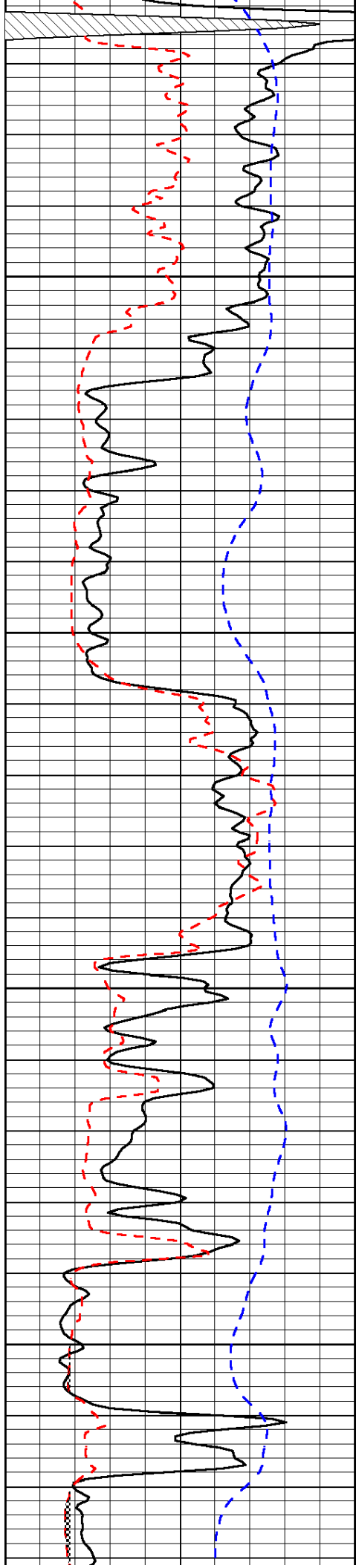
-34

-34

-34

-35

-34

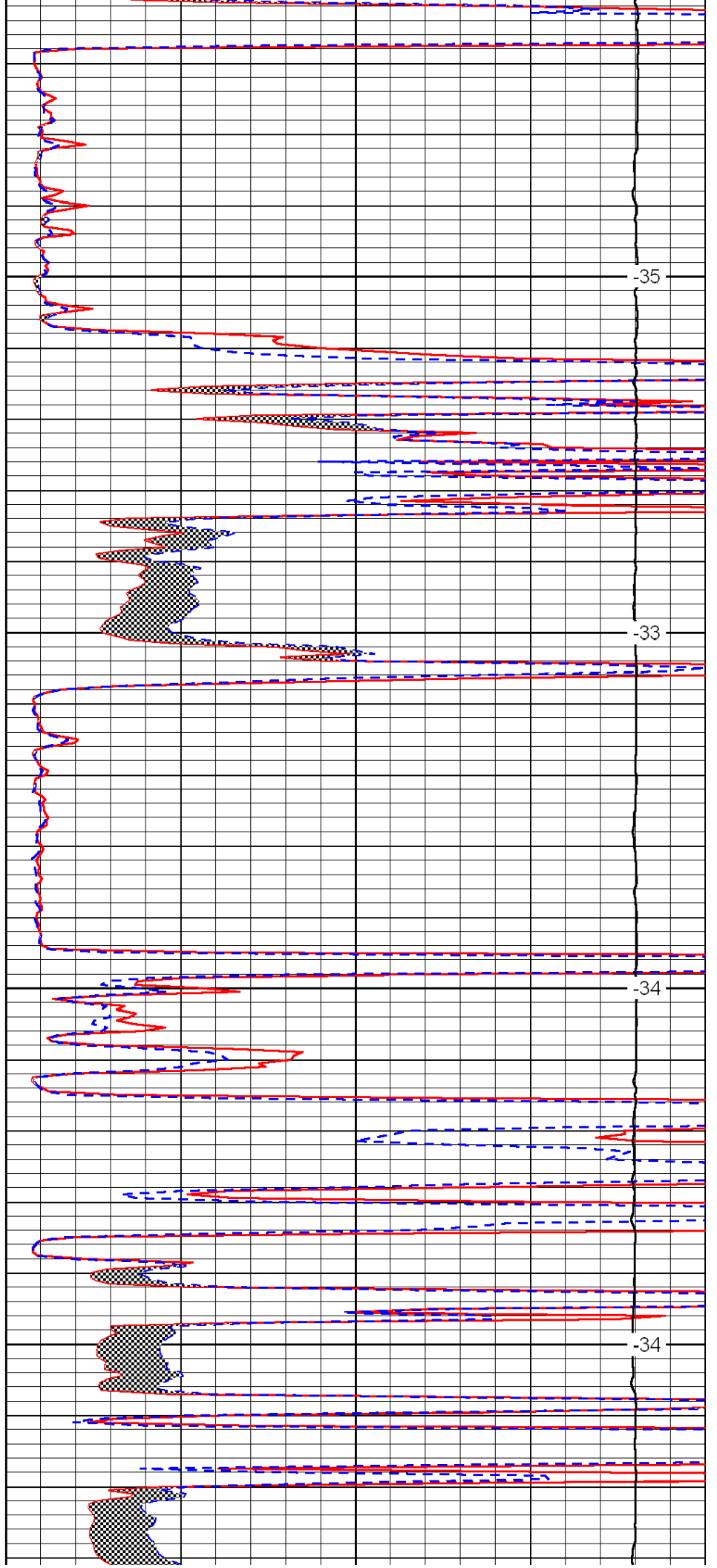


4450

4500

4550

4600

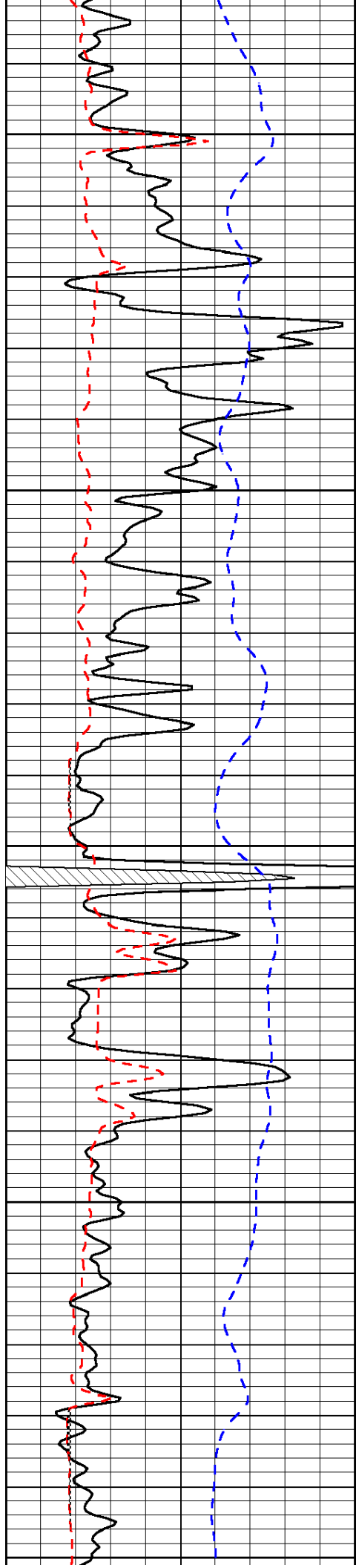


-35

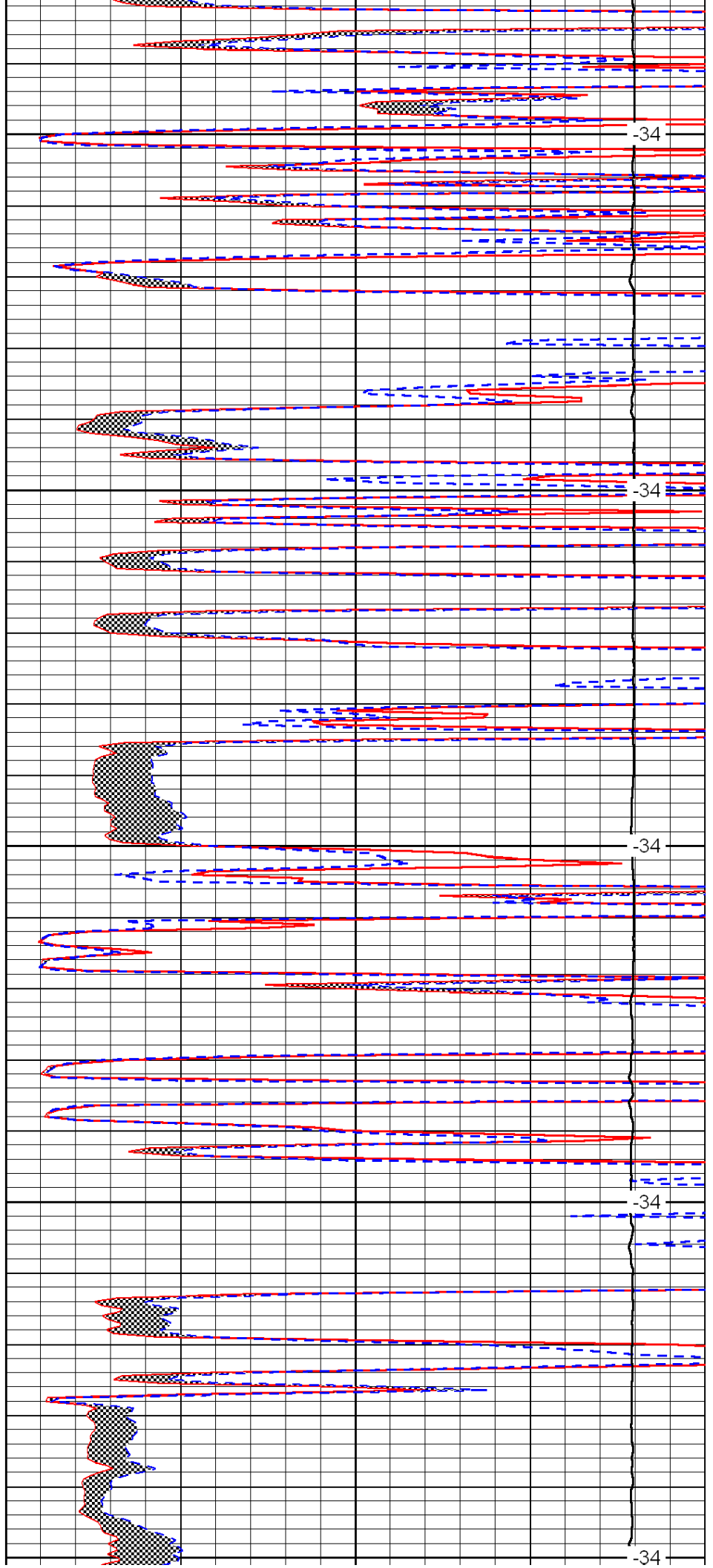
-33

-34

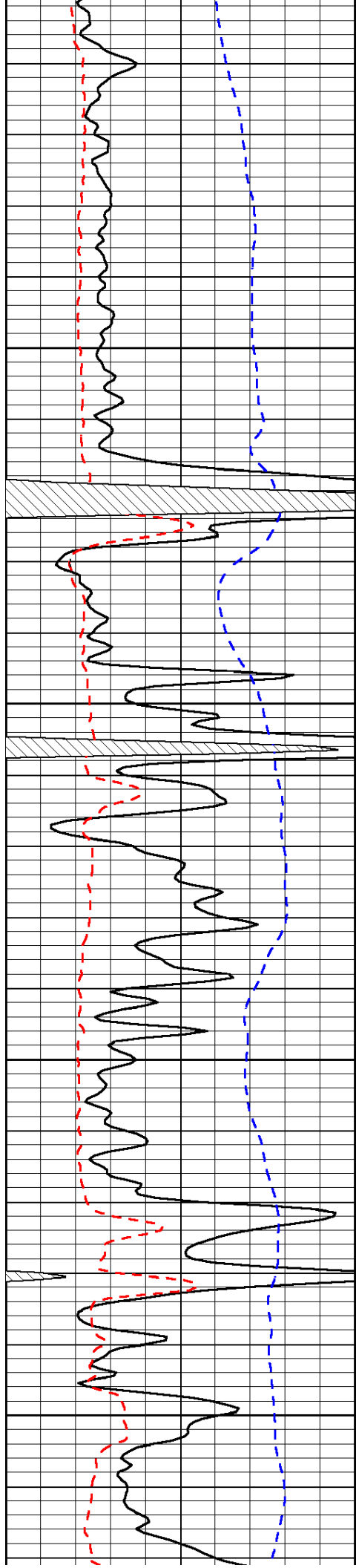
-34



4650
4700
4750
4800
4850



-34
-34
-34
-34
-34

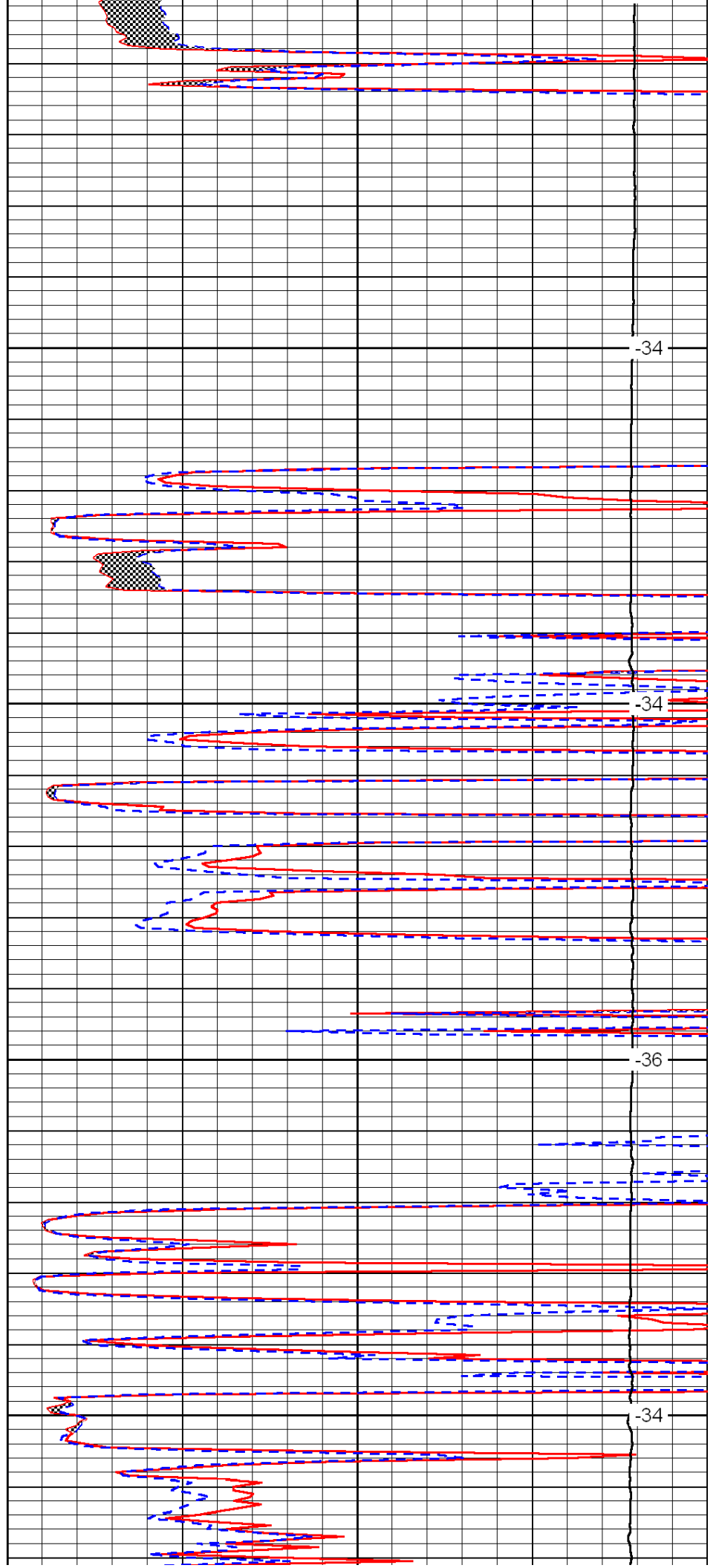


4900

4950

5000

5050

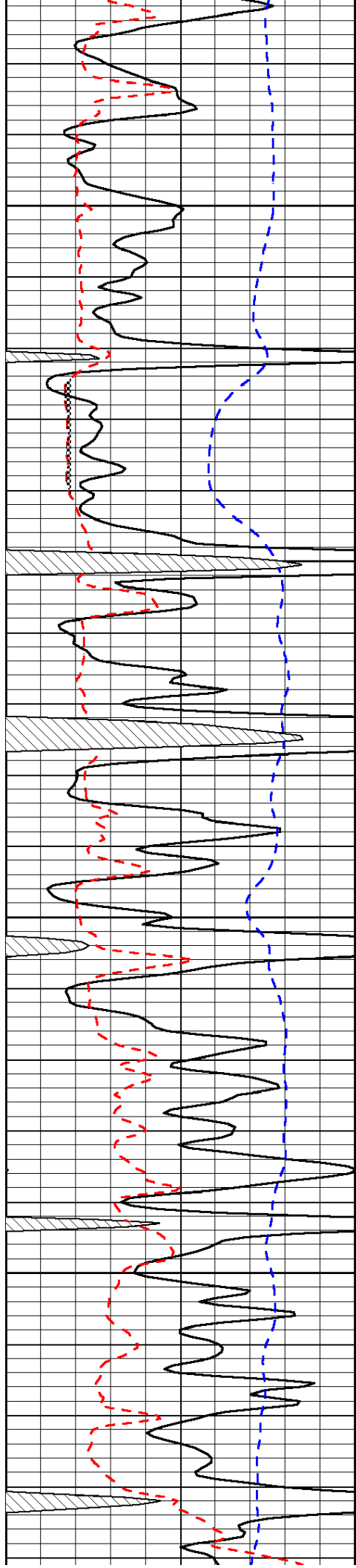


-34

-34

-36

-34

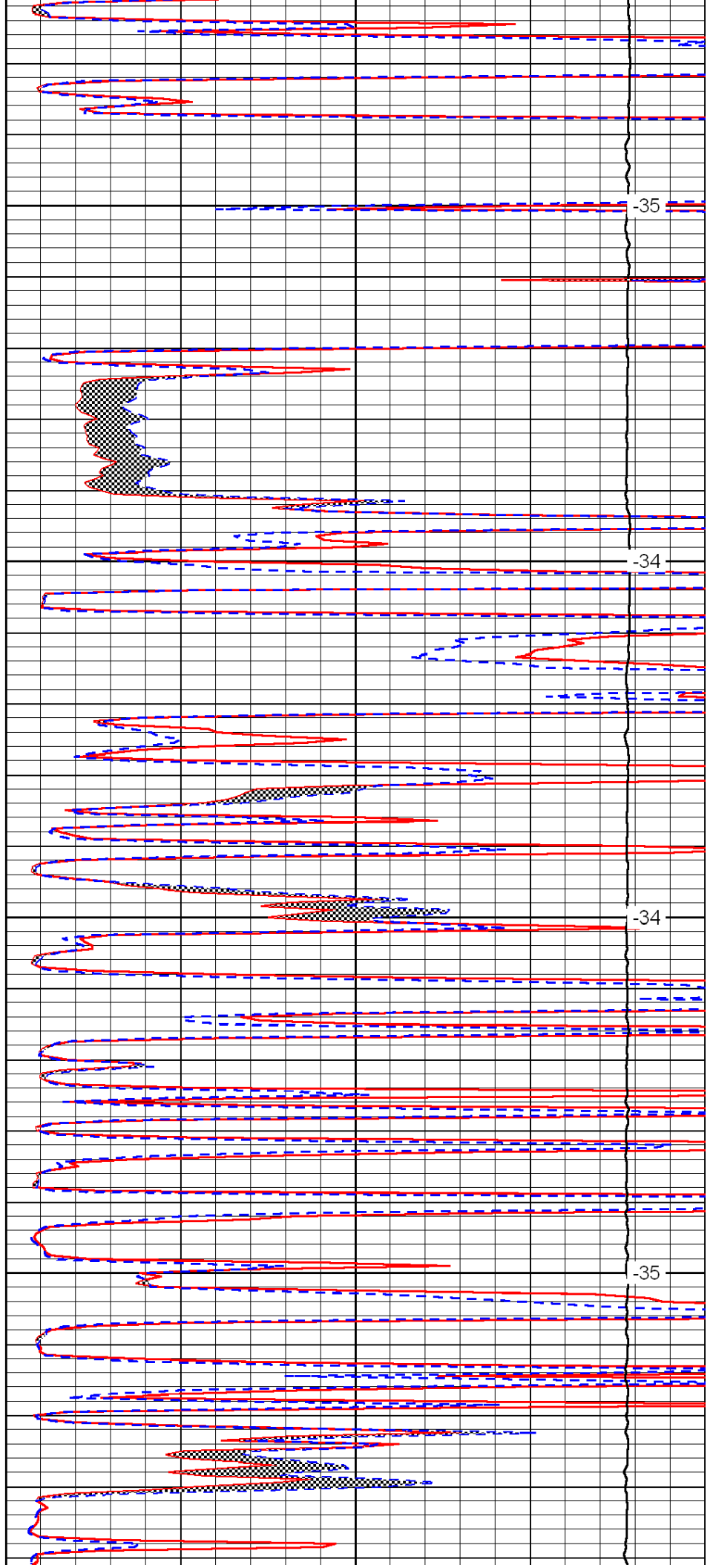


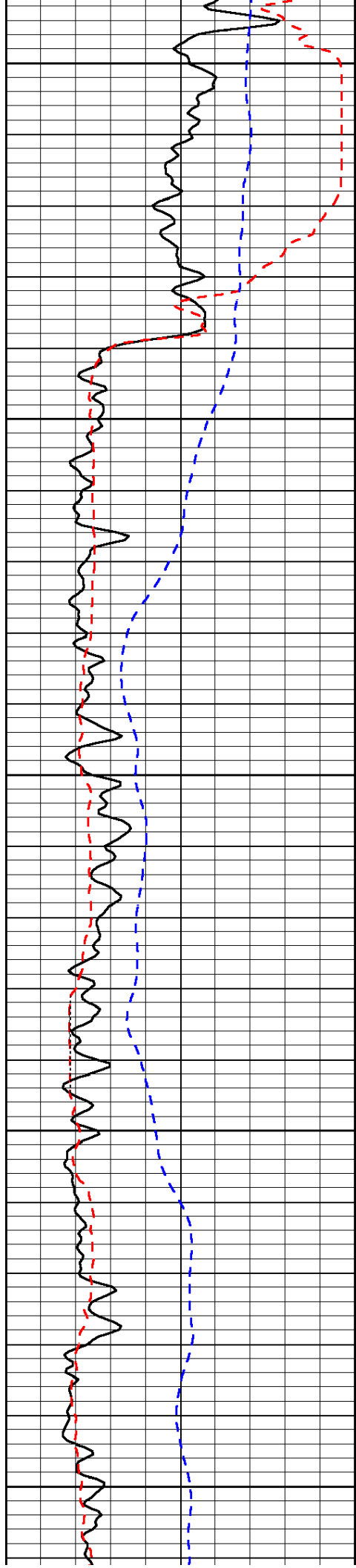
5100

5150

5200

5250





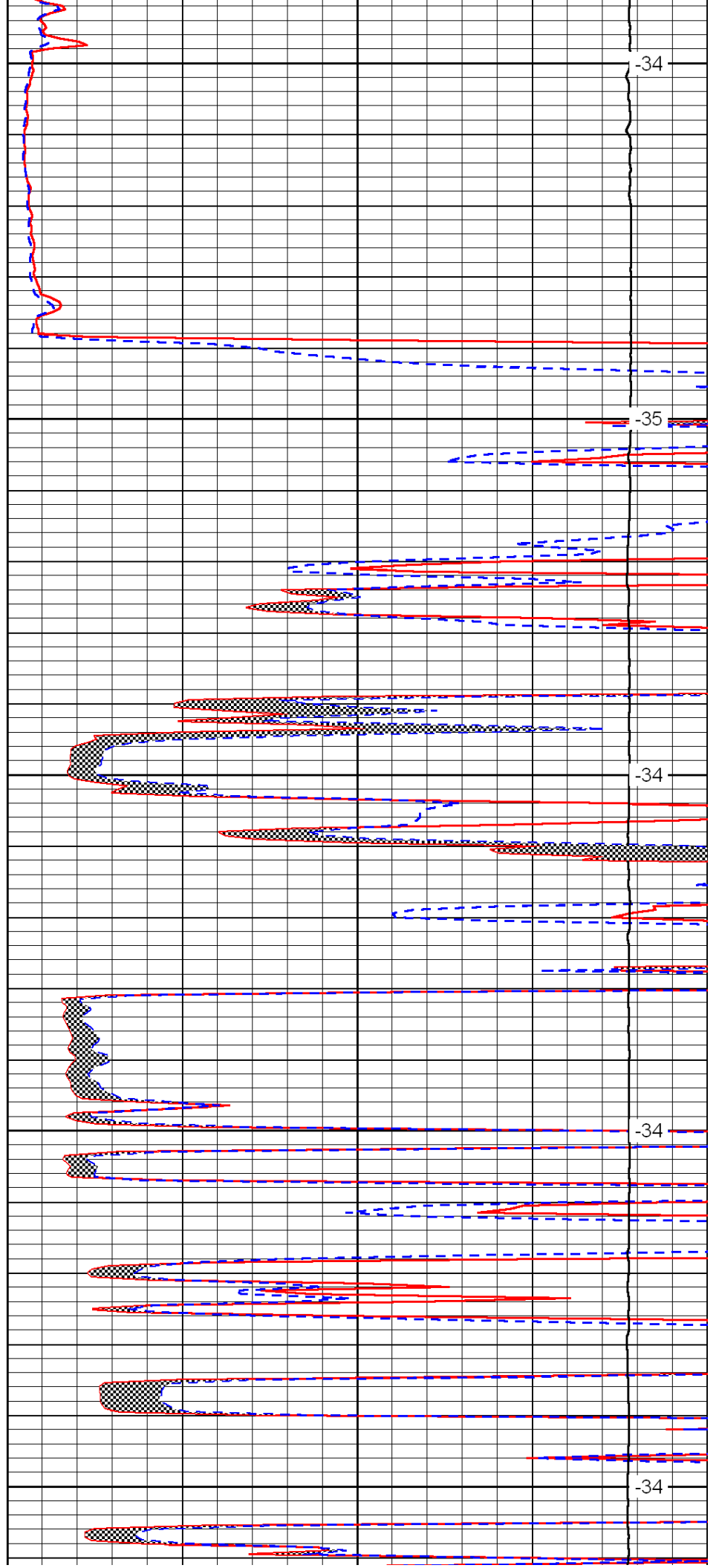
5300

5350

5400

5450

5500



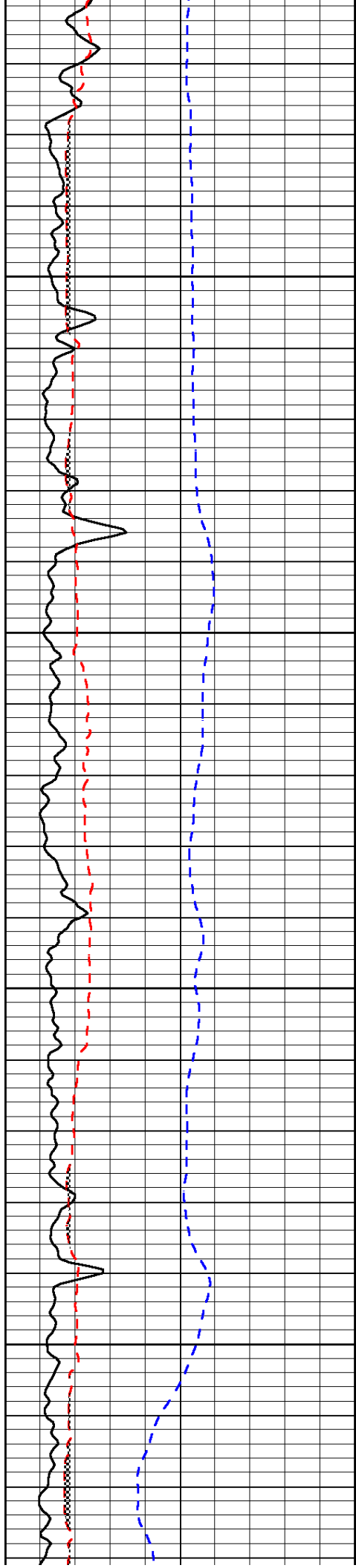
-34

-35

-34

-34

-34

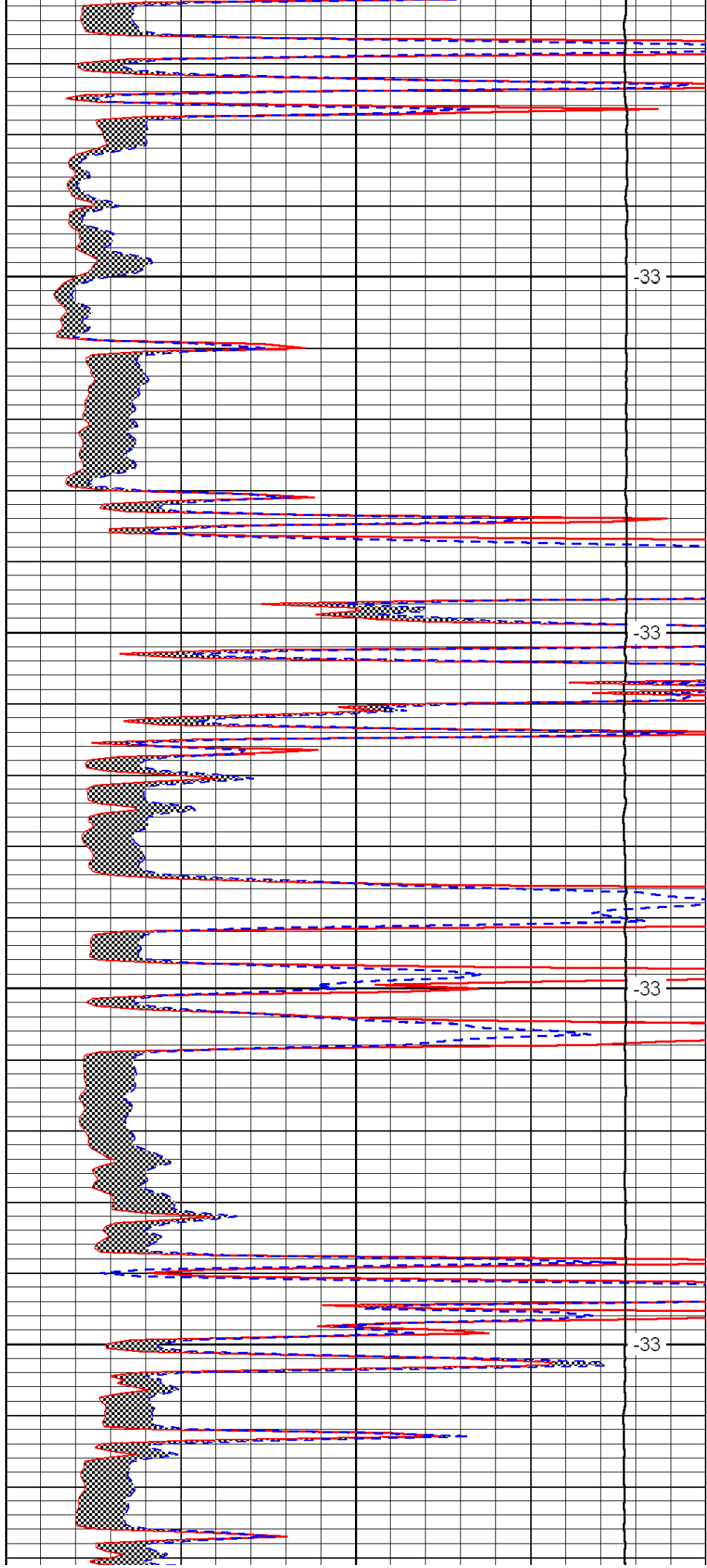


5550

5600

5650

5700

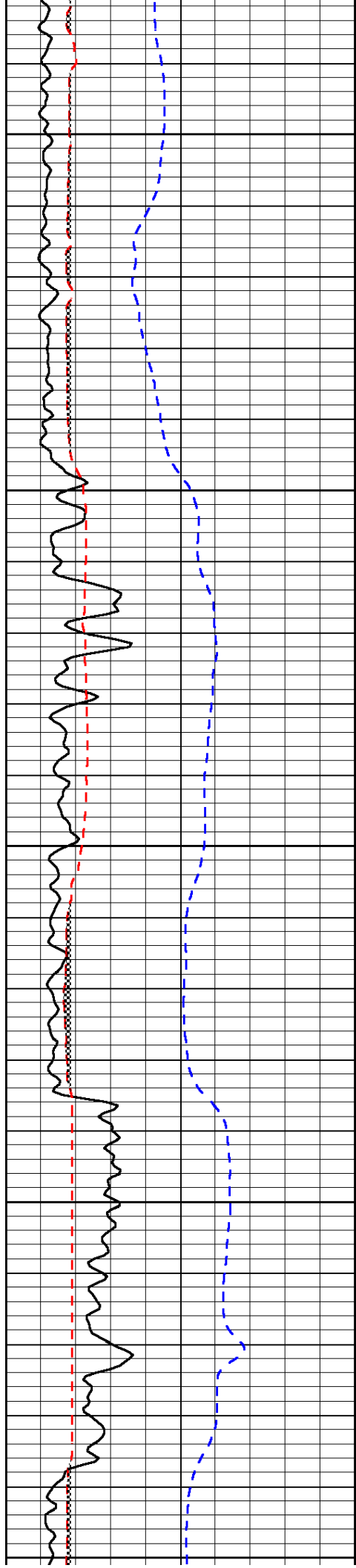


-33

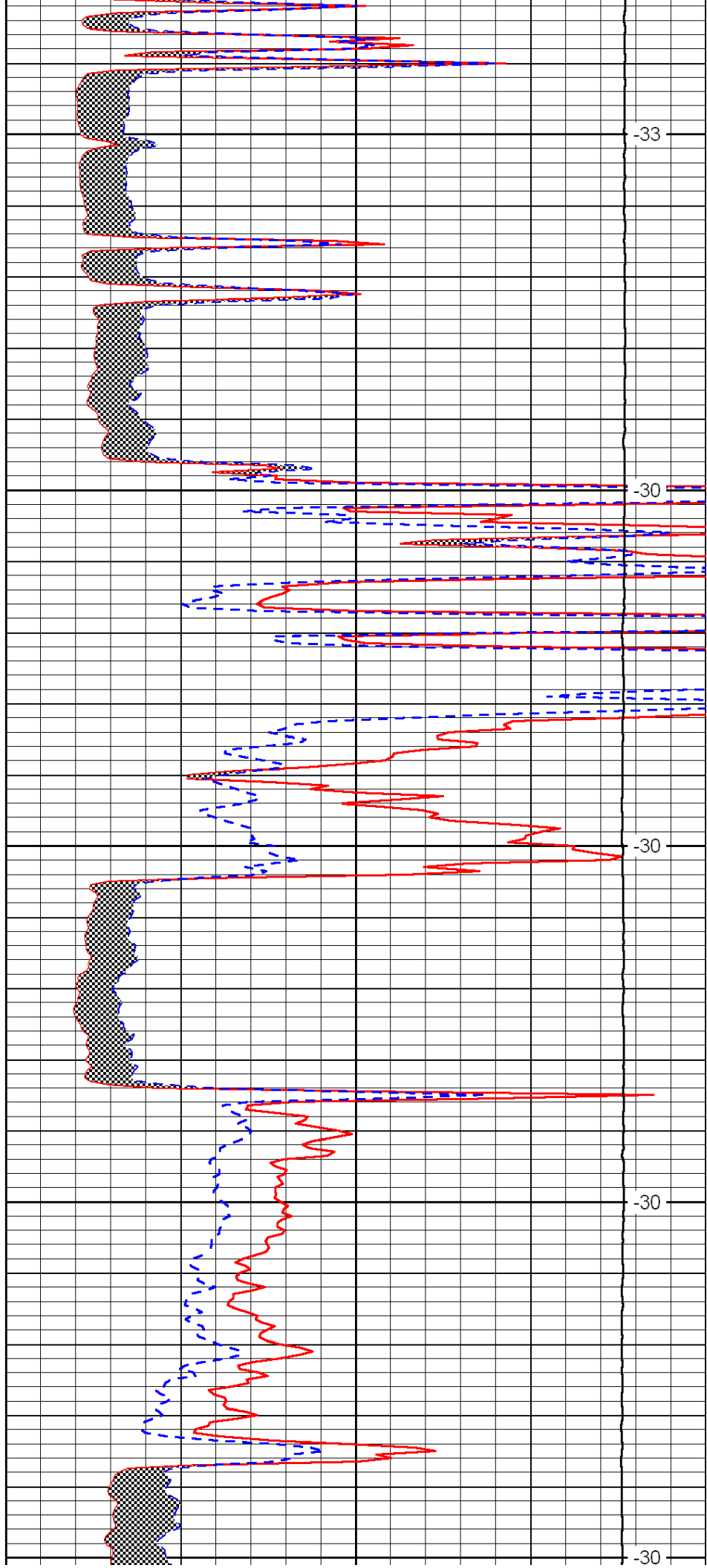
-33

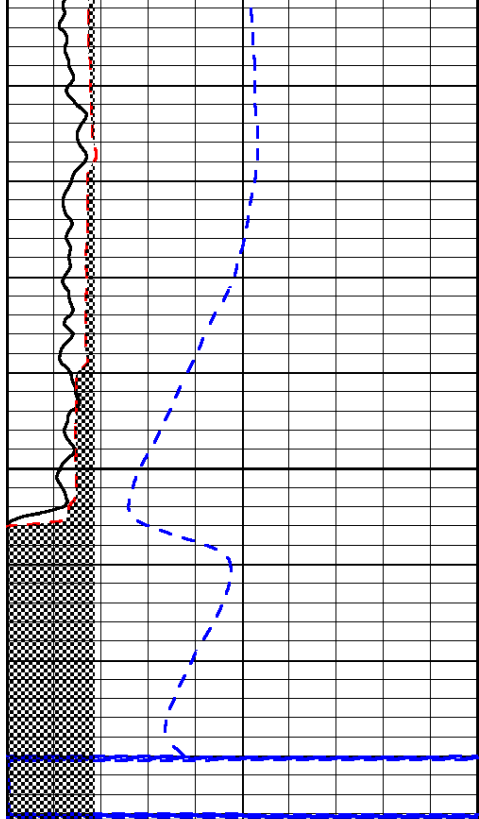
-33

-33



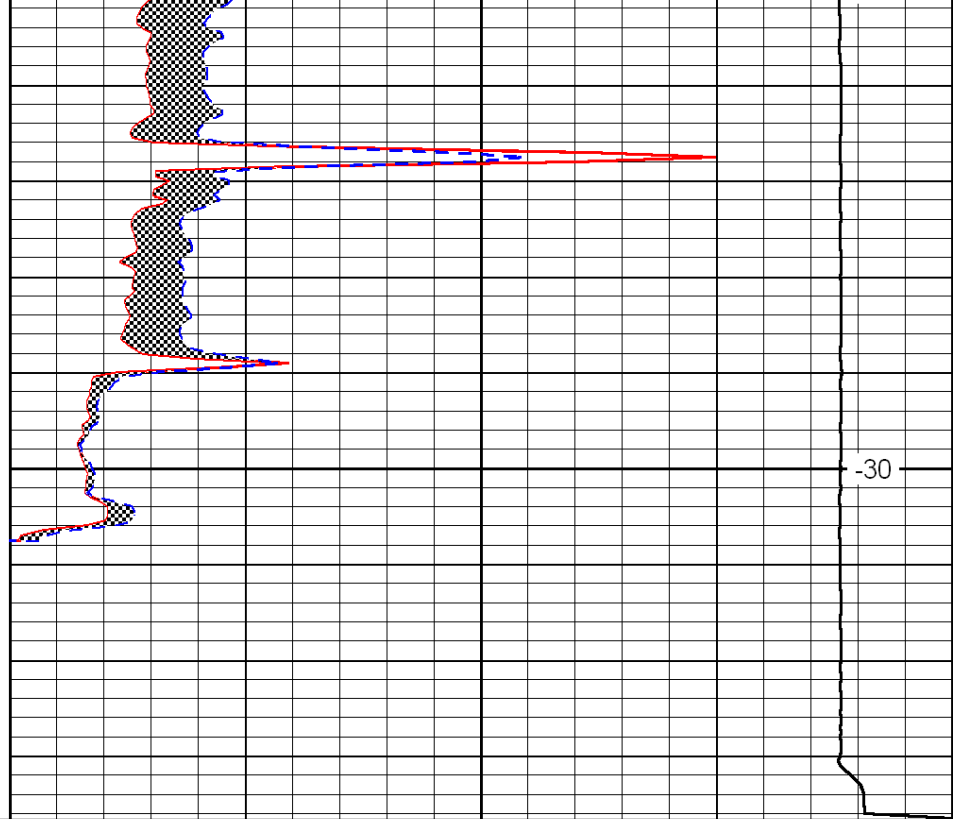
5750
5800
5850
5900
5950





0	Gamma Ray	150
6	Micro Log Caliper (GAPI)	16
-200	SP (mV)	0

6000



0	Micro Inverse 1 X 1	40
0	Micro Normal 2''	40
15000	Line Weight	0

-30

LSPD