



**Borehole Compensated  
Sonic Log**

**DIGITAL LOG (785) 625-3858**

API No. 15-101-22,243-00-00	Company <b>Larson Engineering, Inc.</b>	Location <b>2495' FSL &amp; 841' FEL</b>	Other Services CNL/CDL MEL/DIL
Well <b>McLeish N o. 2-24</b>	County <b>Lane</b>		
Field <b>Wildcat</b>	Lane <b>Lane</b>	State <b>Kansas</b>	
Log Measured From Drilling Measured From	Ground Level Kelly Bushing	Elevation 2645	
	Kelly Bushing	7 Ft. Above Perm. Datum	
		K.B. 2652 D.F. 2645 G.L. 2645	

Permanent Datum	06/09/2010	Run Number	Two
Log Measured From		Type Log	BHC Sonic
Drilling Measured From		Depth Driller	4685
		Depth Logger	4690
		Bottom Logged Interval	4679
		Top Logged Interval	200
		Type Fluid In Hole	Chemical
		Salinity, PPM CL	3,500
		Density	8.9
		Level	Full
		Max. Rec. Temp. F	125
		Operating Rig Time	4 1/2 Hours
		Equipment -- Location	17 Hays
		Recorded By	Mike Garrison
		Witnessed By	Bob Lewelln

Borehole Record		Casing Record					
Run No	Bit	From	To	Size	Wgt.	From	To
One	12.25	00	250	8.625	23#	00	250
Two	7.875	250		TD			

<<< Fold Here >>>

All interpretations are opinions based on inferences from electrical or other measurements and we cannot and do not guarantee the accuracy or correctness of any interpretation, and we shall not, except in the case of gross or willful negligence on our part, be liable or responsible for any loss, costs, damages, or expenses incurred or sustained by anyone resulting from any interpretation made by any of our officers, agents or employees. These interpretations are also subject to our general terms and conditions set out in our current Price Schedule.

**Comments**

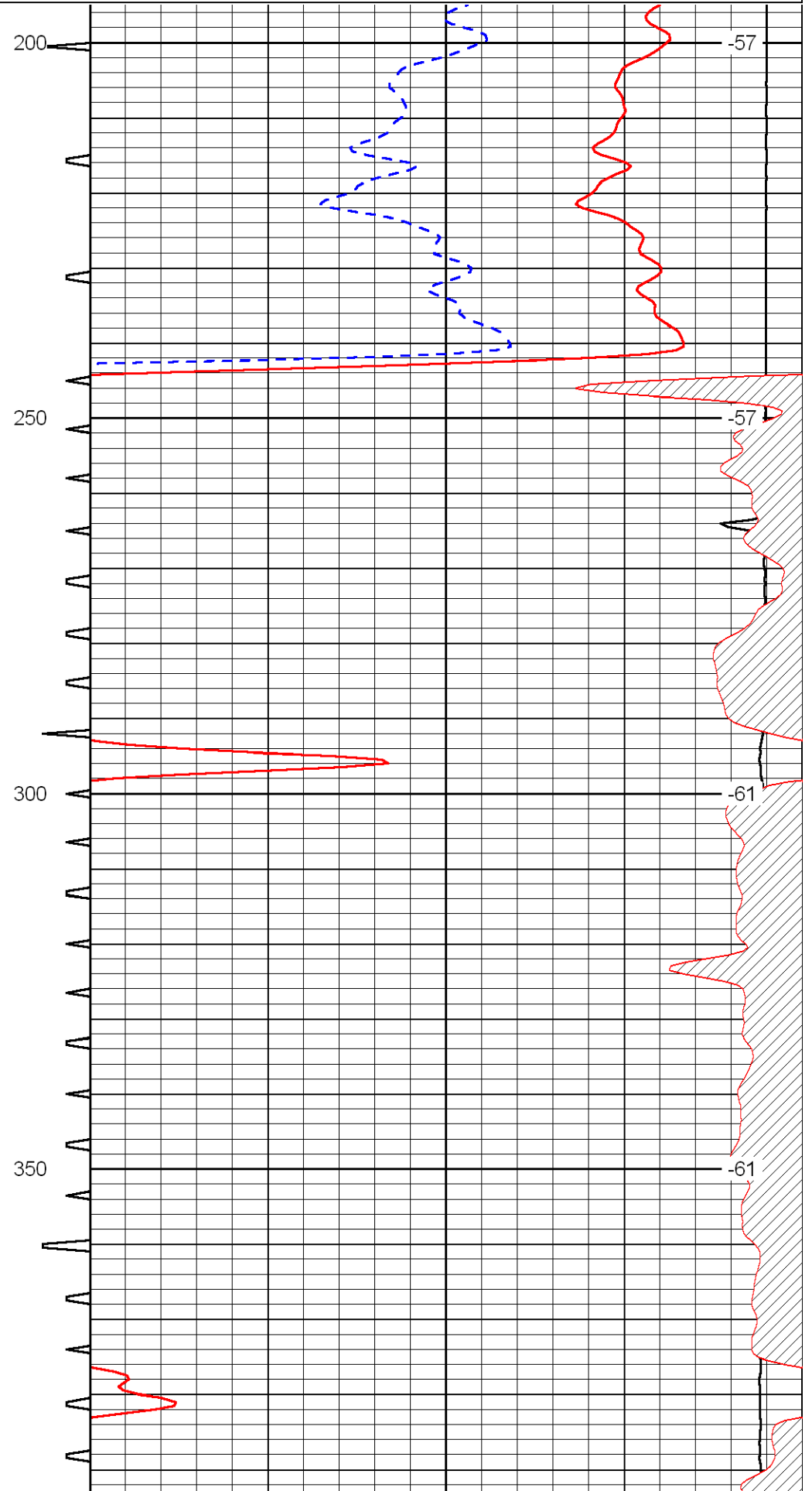
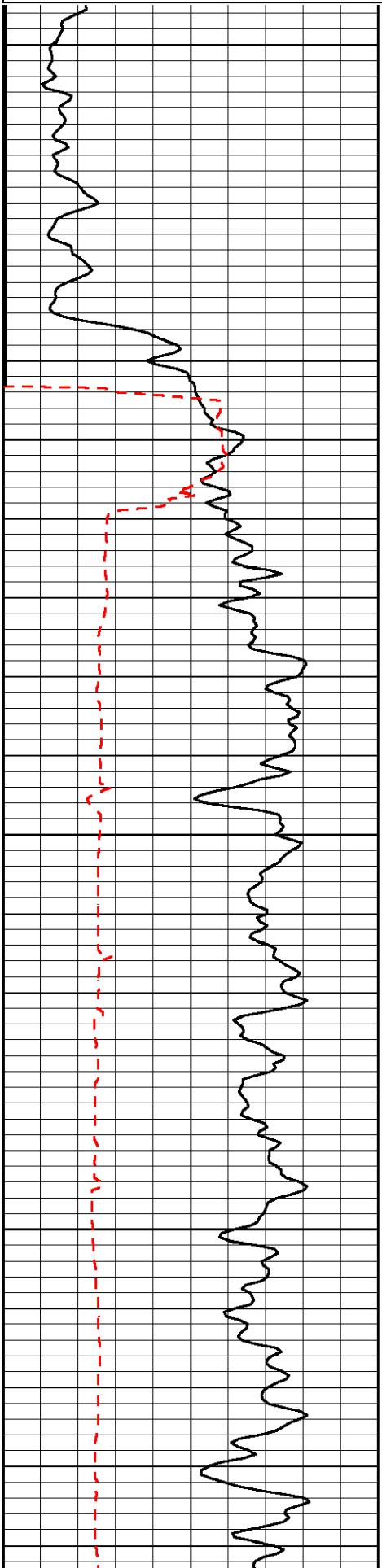
Thank you for using Log-Tech, Inc.  
(785) 625-3858

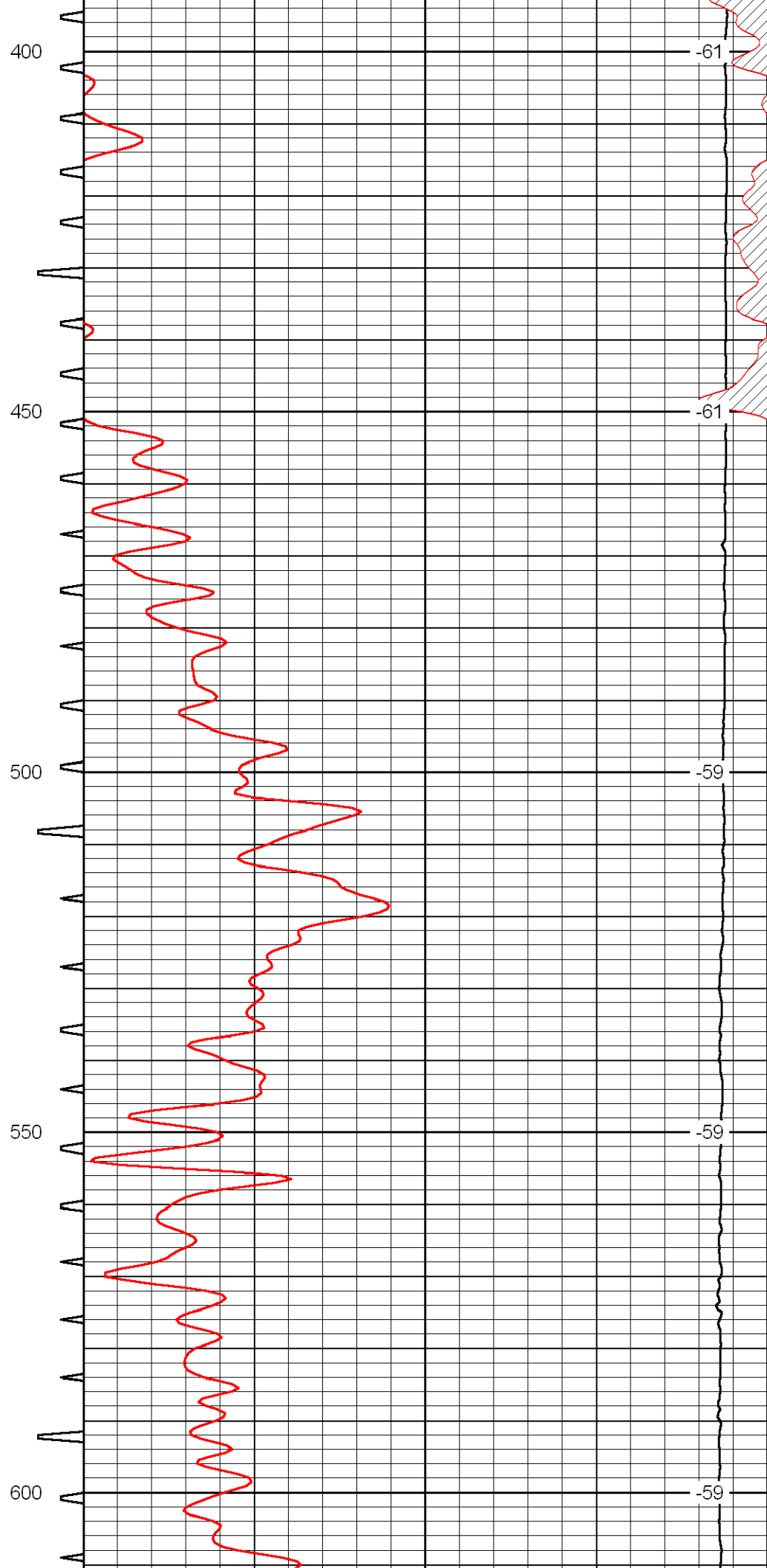
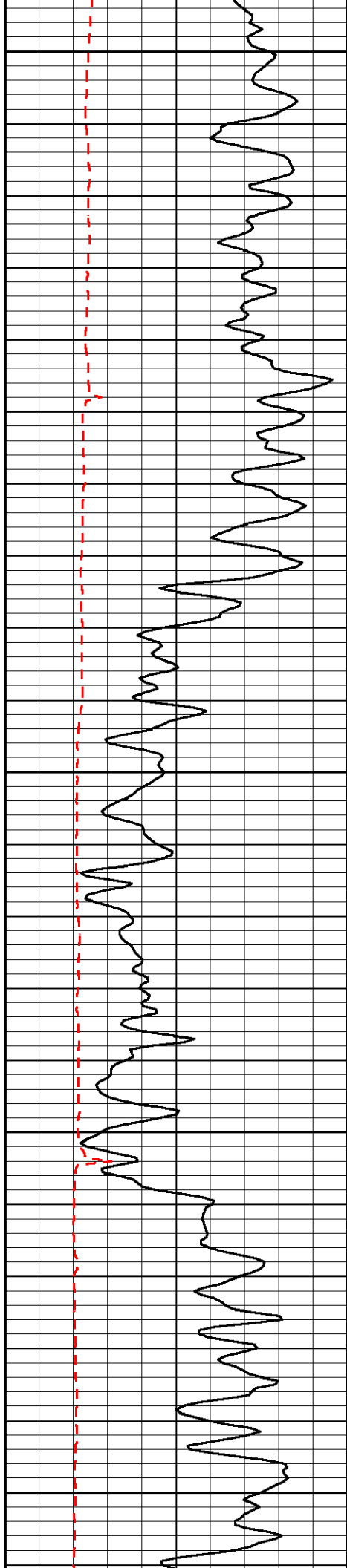
Ness City, West to County Line, North Into

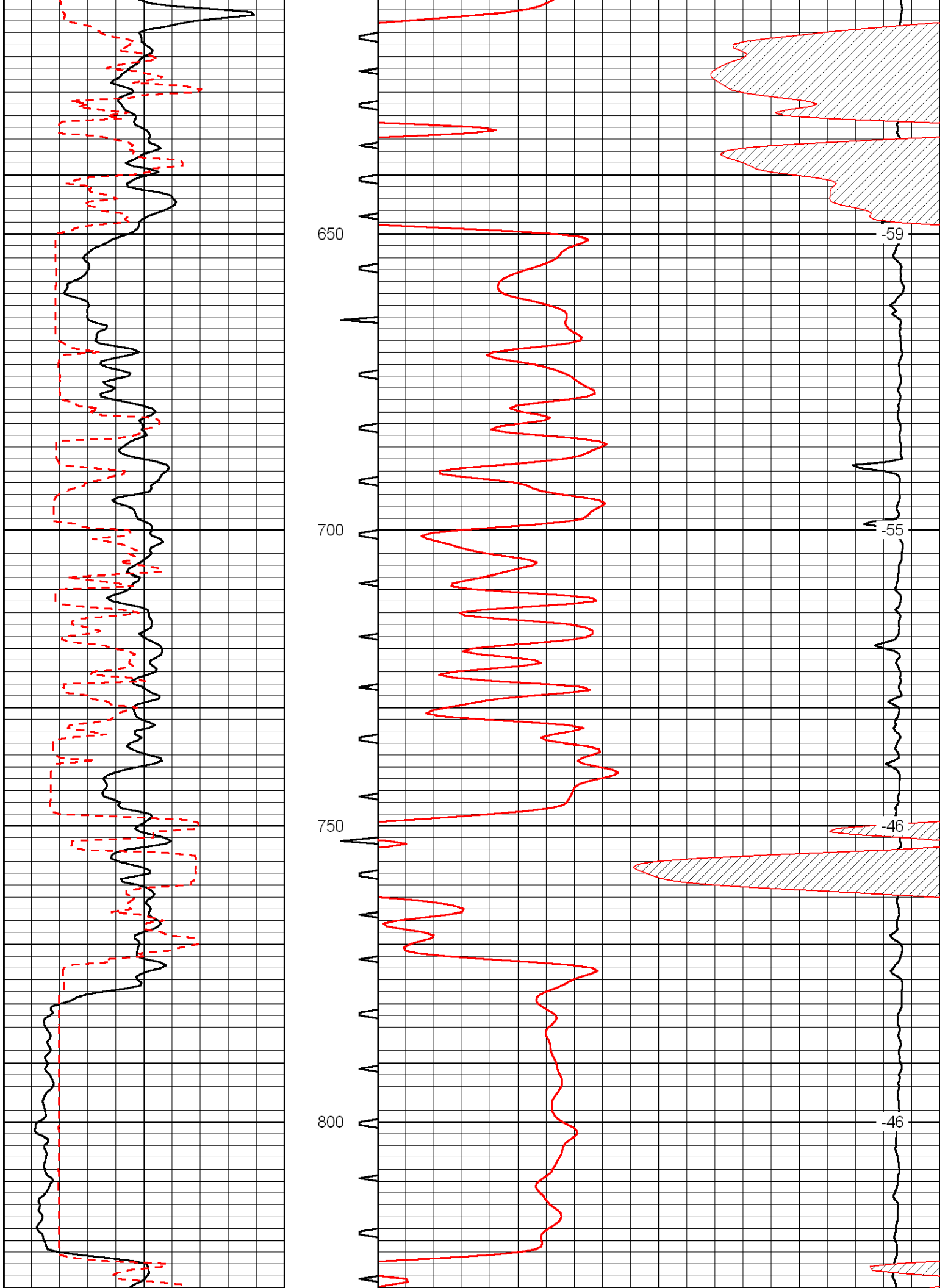
Database File: laron\_mcleish-2-24hd.db  
 Dataset Pathname: dil/larstck2  
 Presentation Format: sonic  
 Dataset Creation: Wed Jun 09 04:16:37 2010  
 Charted by: Depth in Feet scaled 1:240

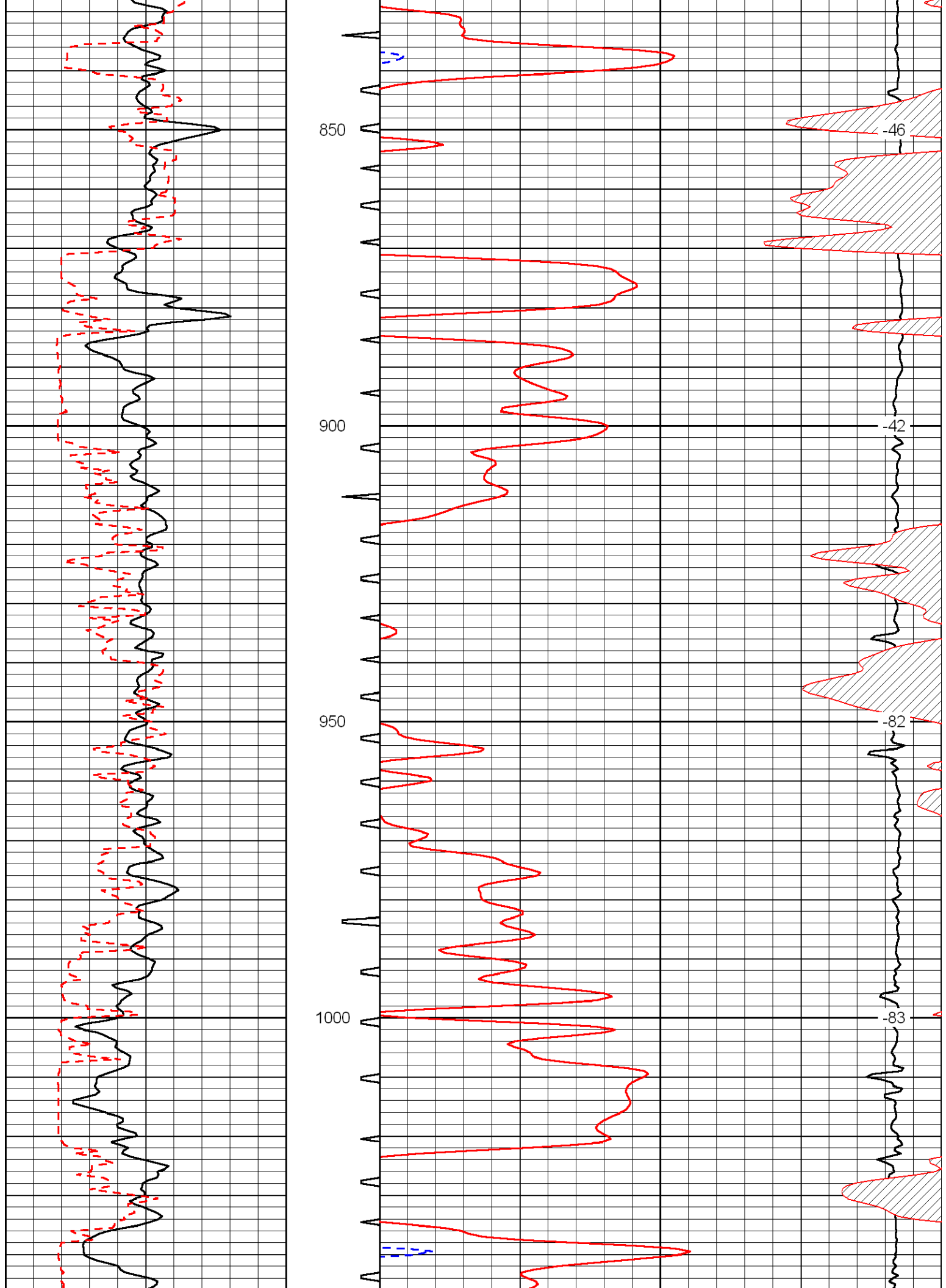
0	Gamma Ray	150	Sonic Int	140	Delta Time (usec/ft)	40
150	Gamma Ray	300	5	0	Sonic Porosity	-10
6	dCAL	16		30	LTEN (lb)	0
				15000		

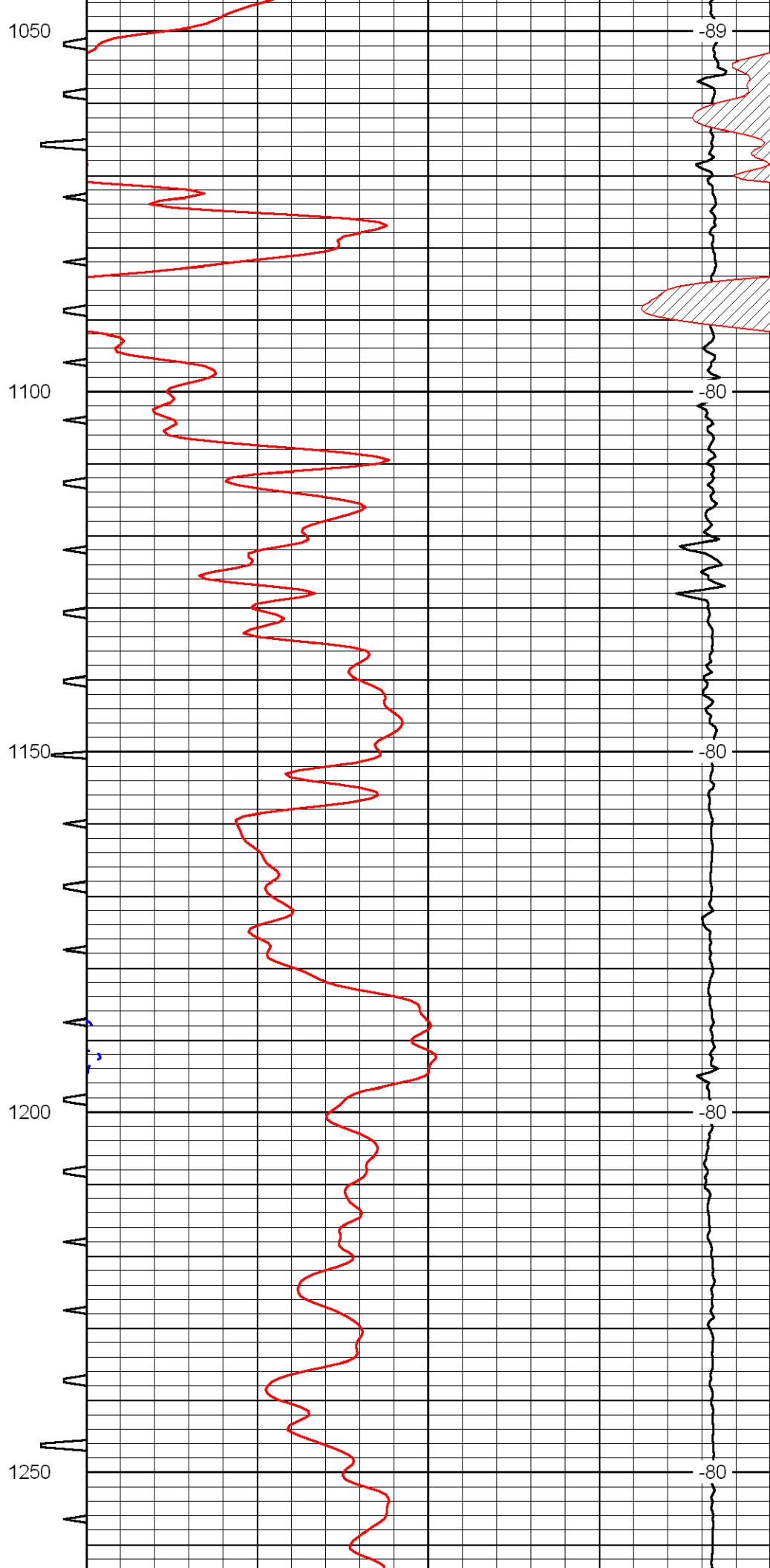
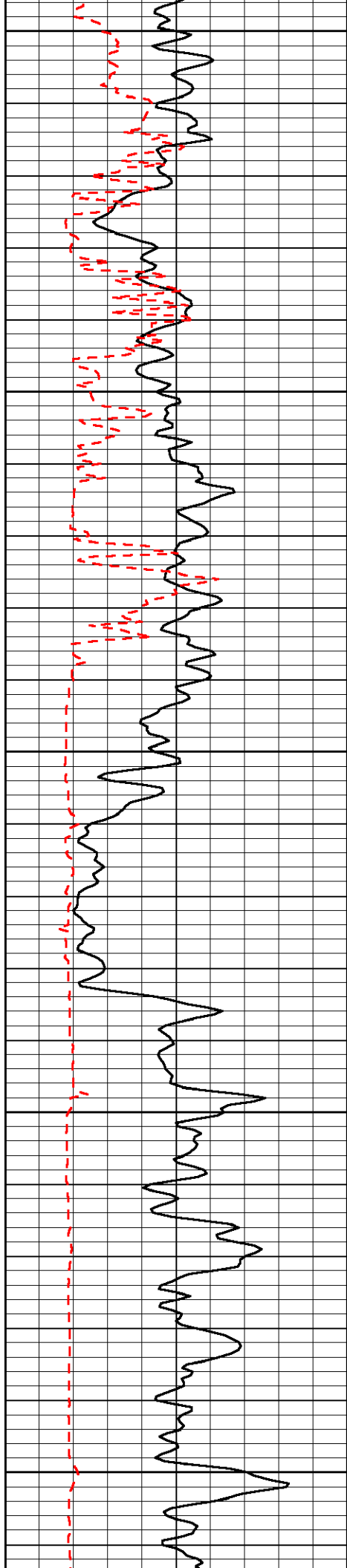
LSPD

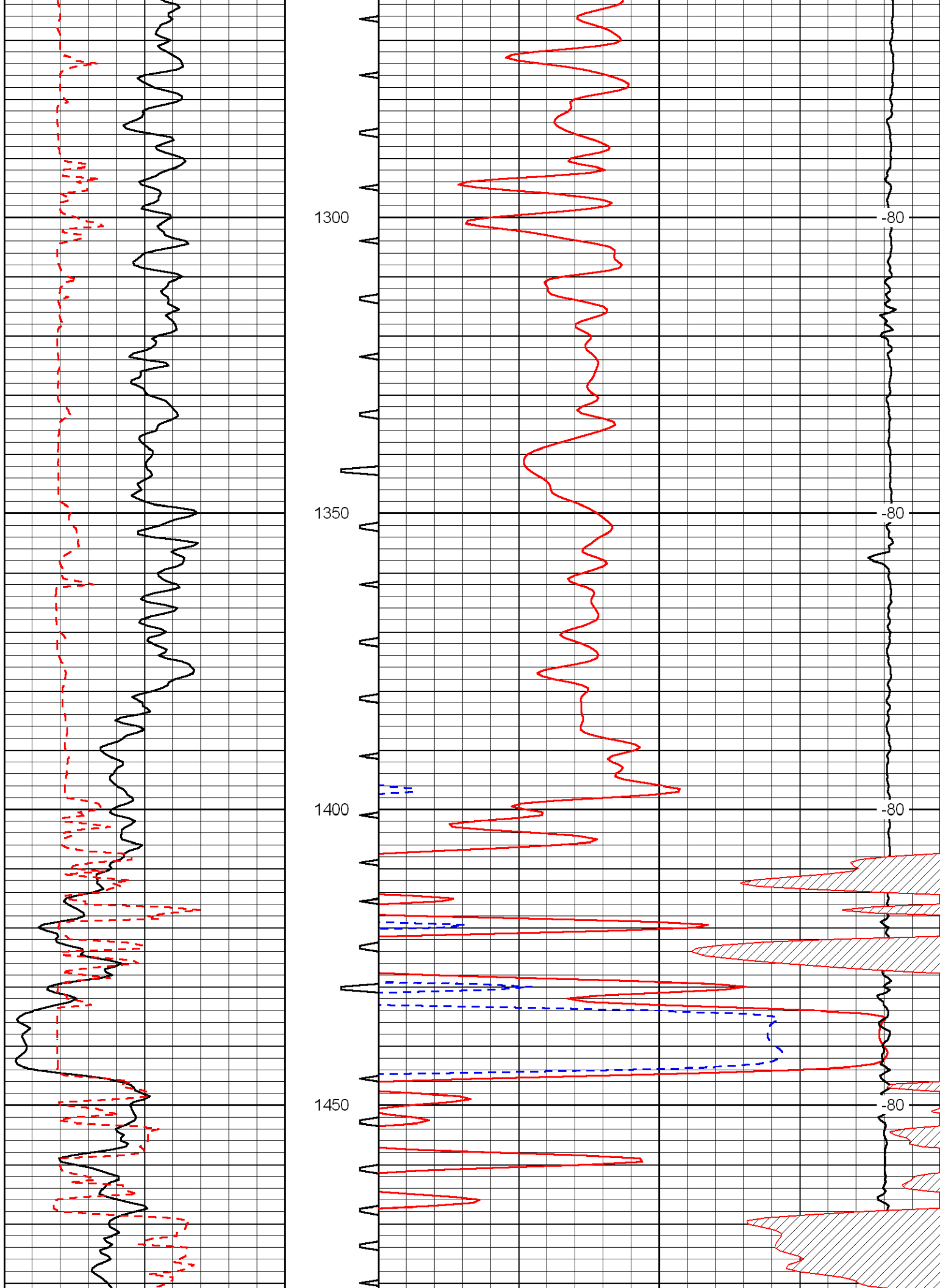


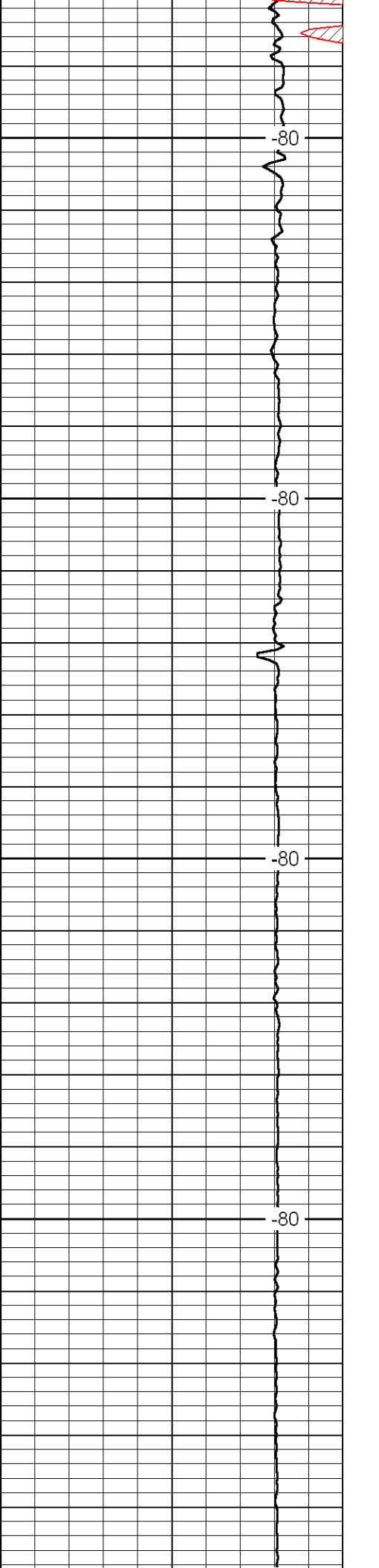
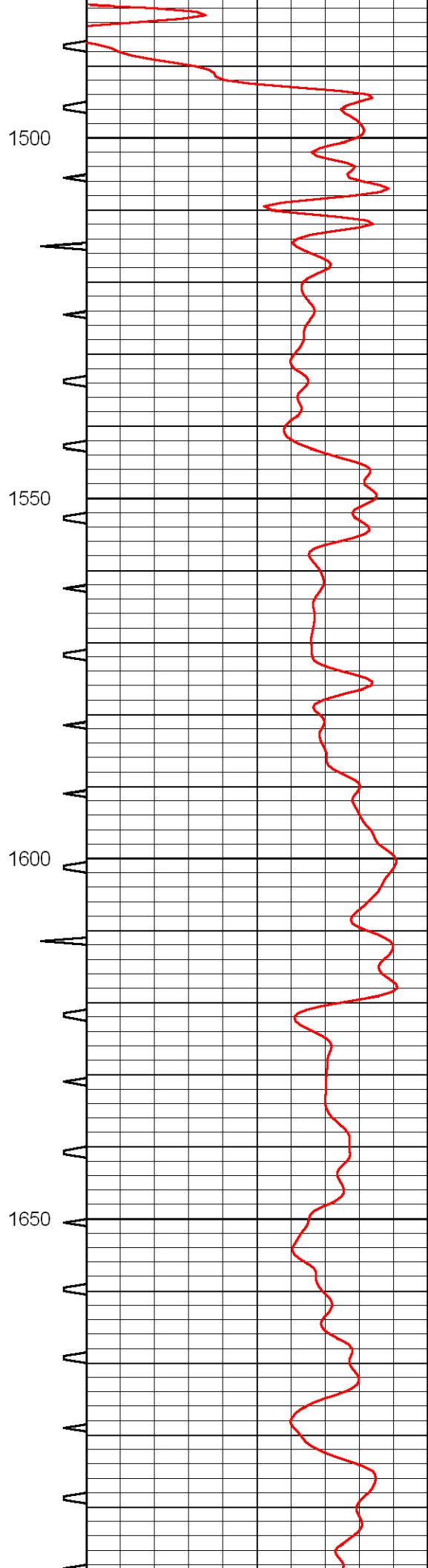
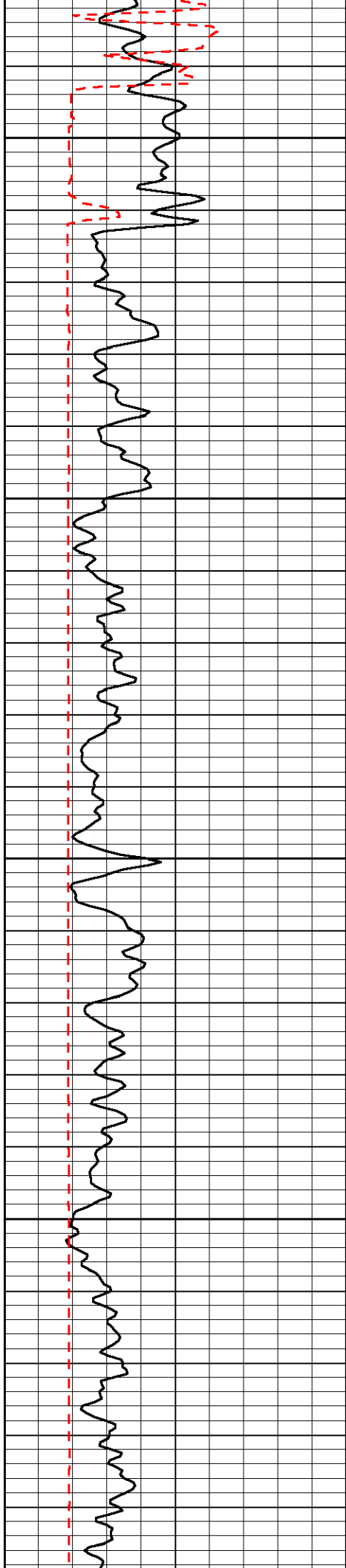


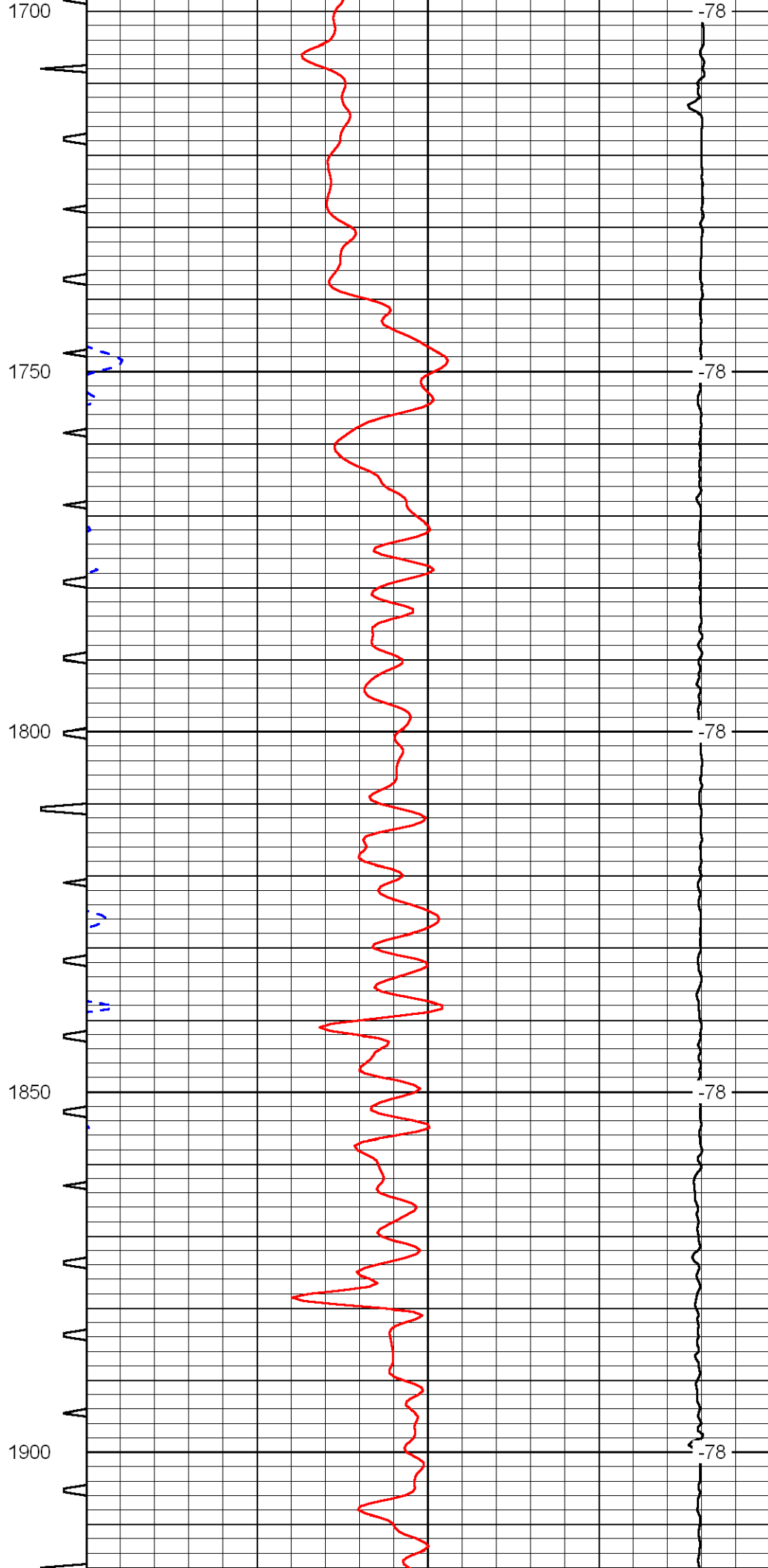
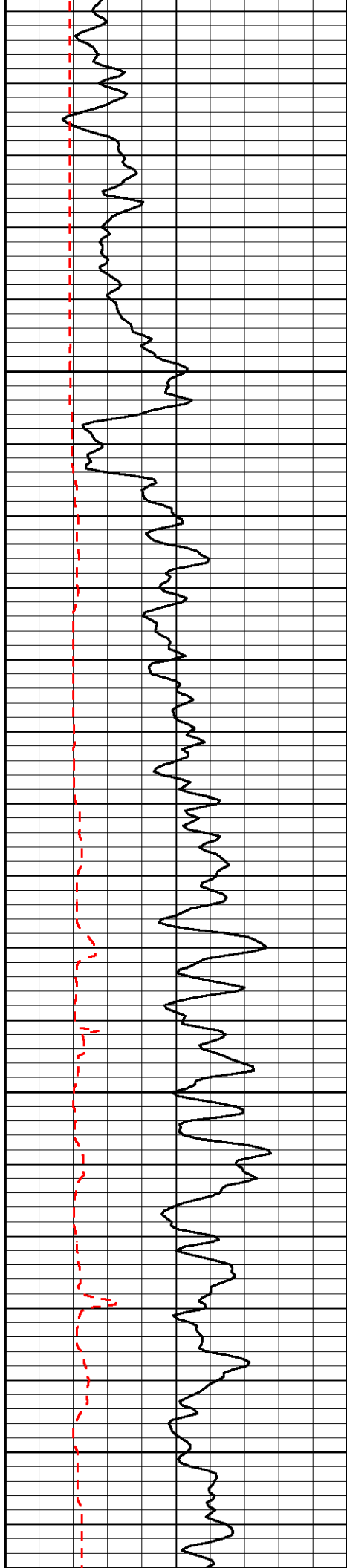


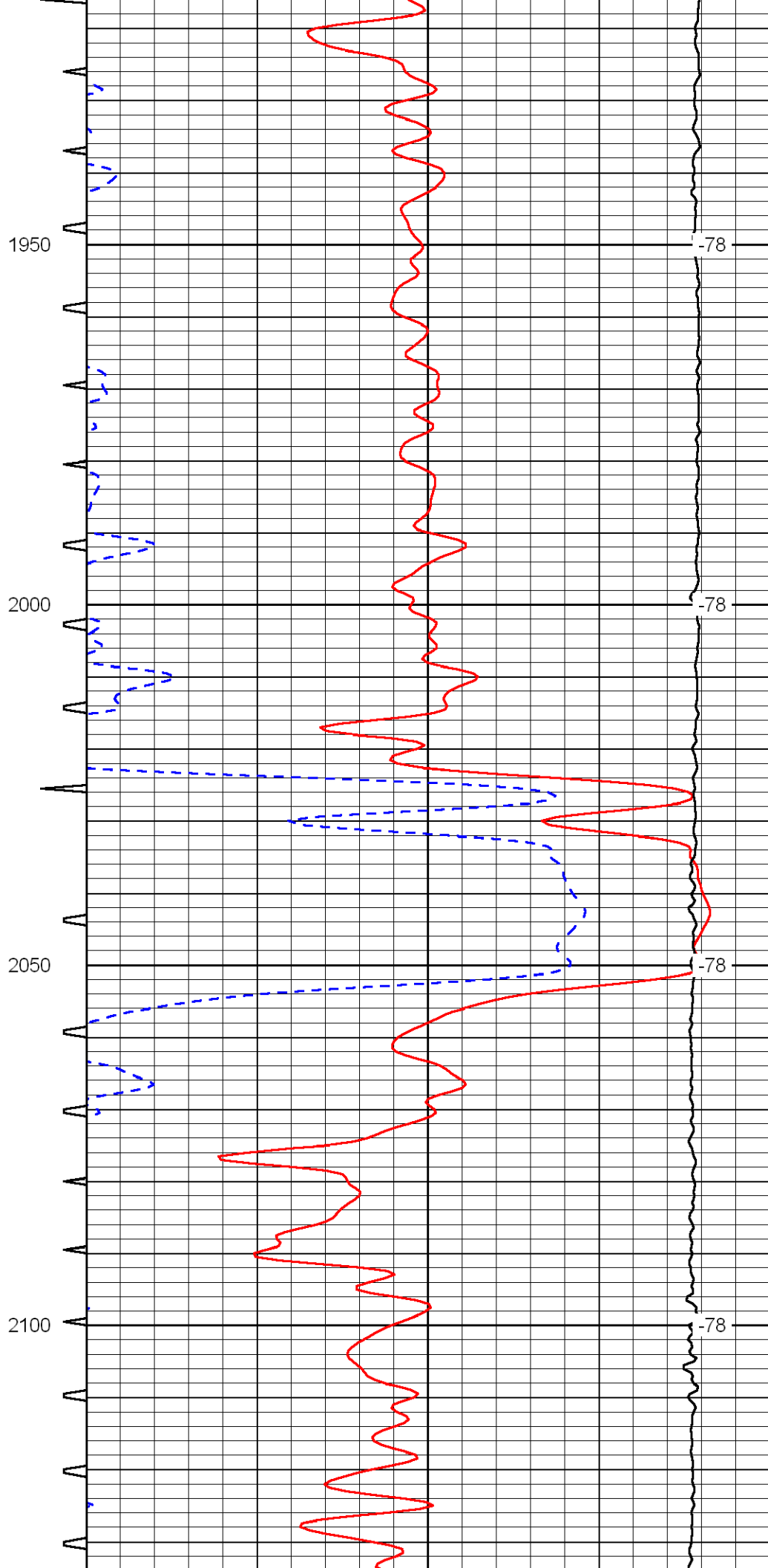
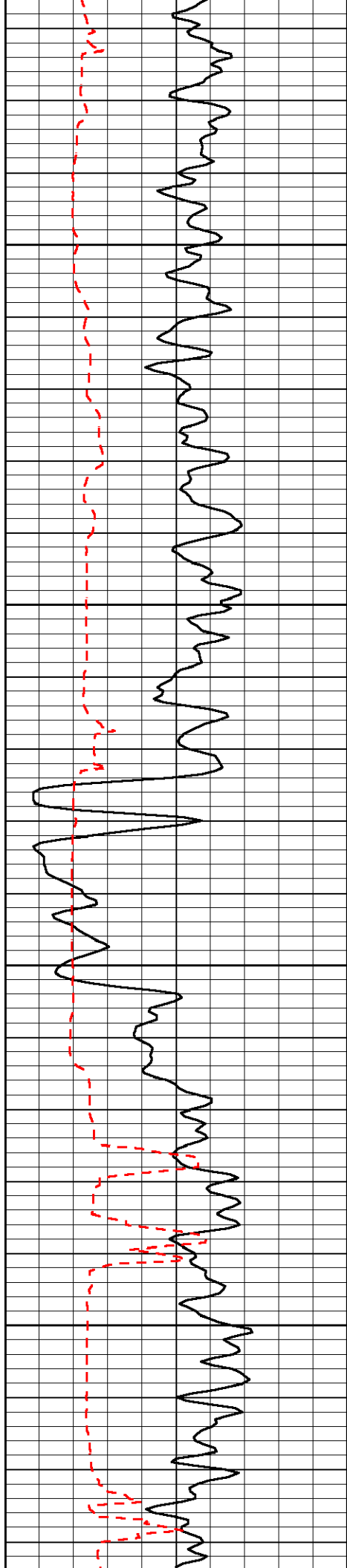


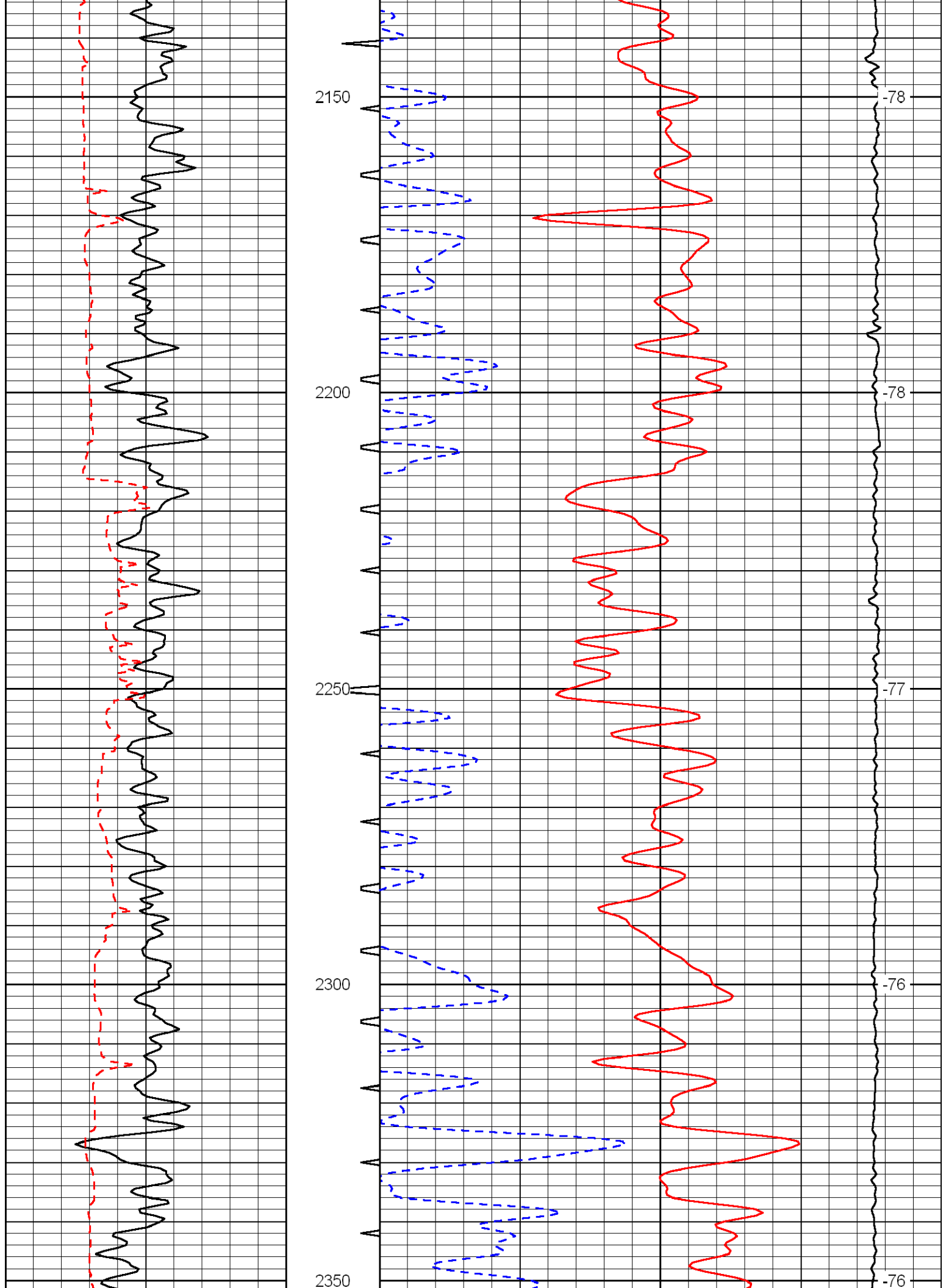


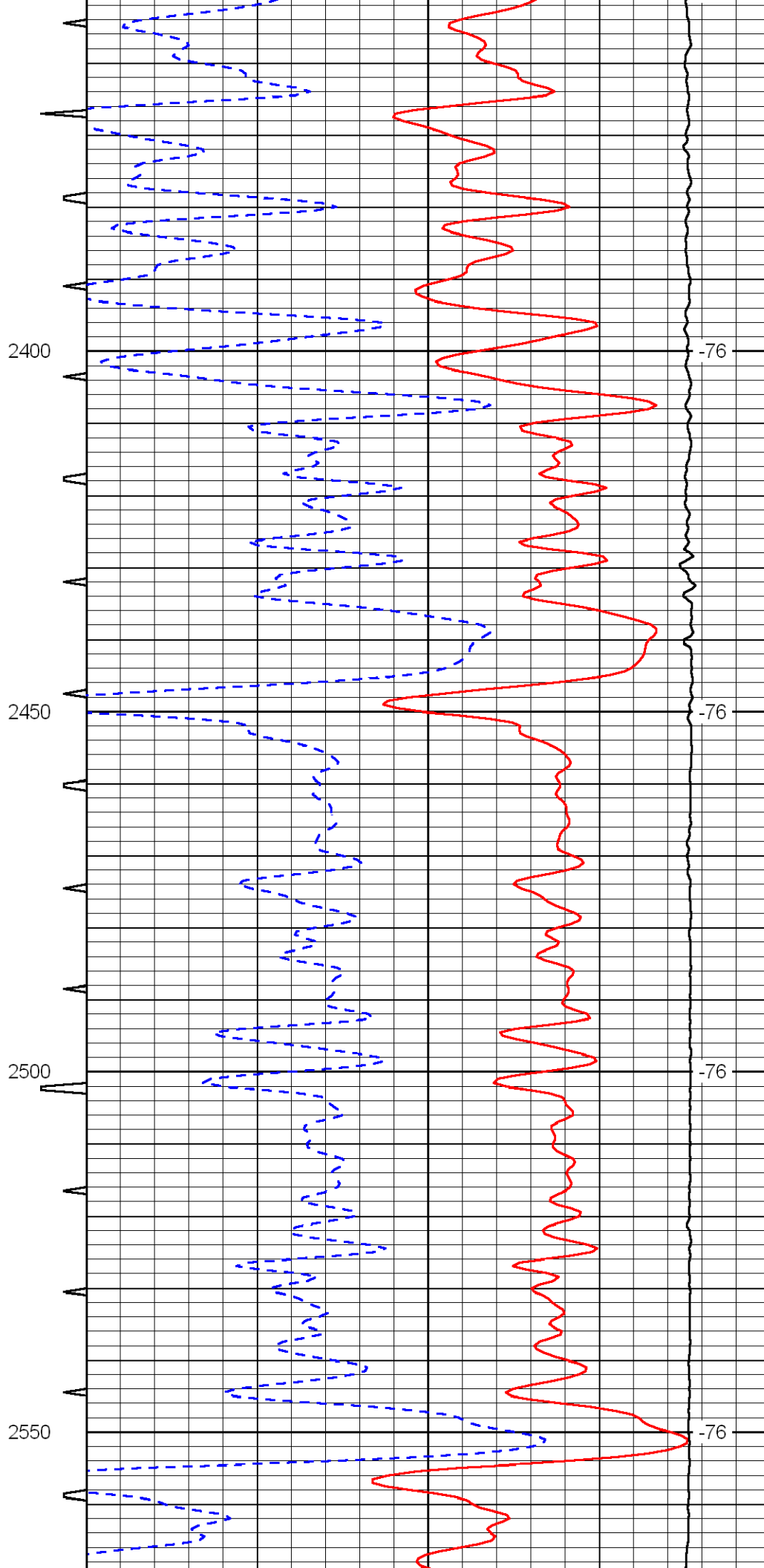
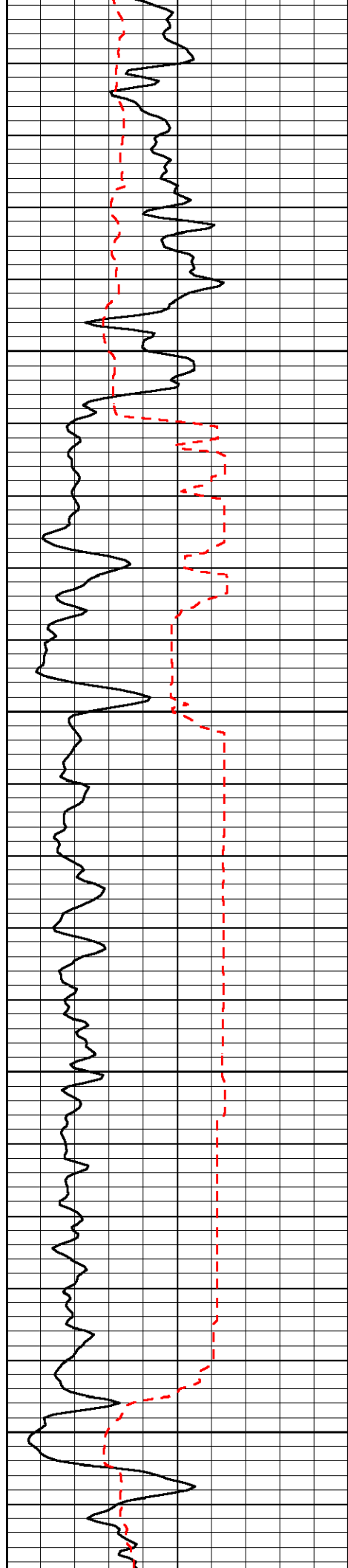


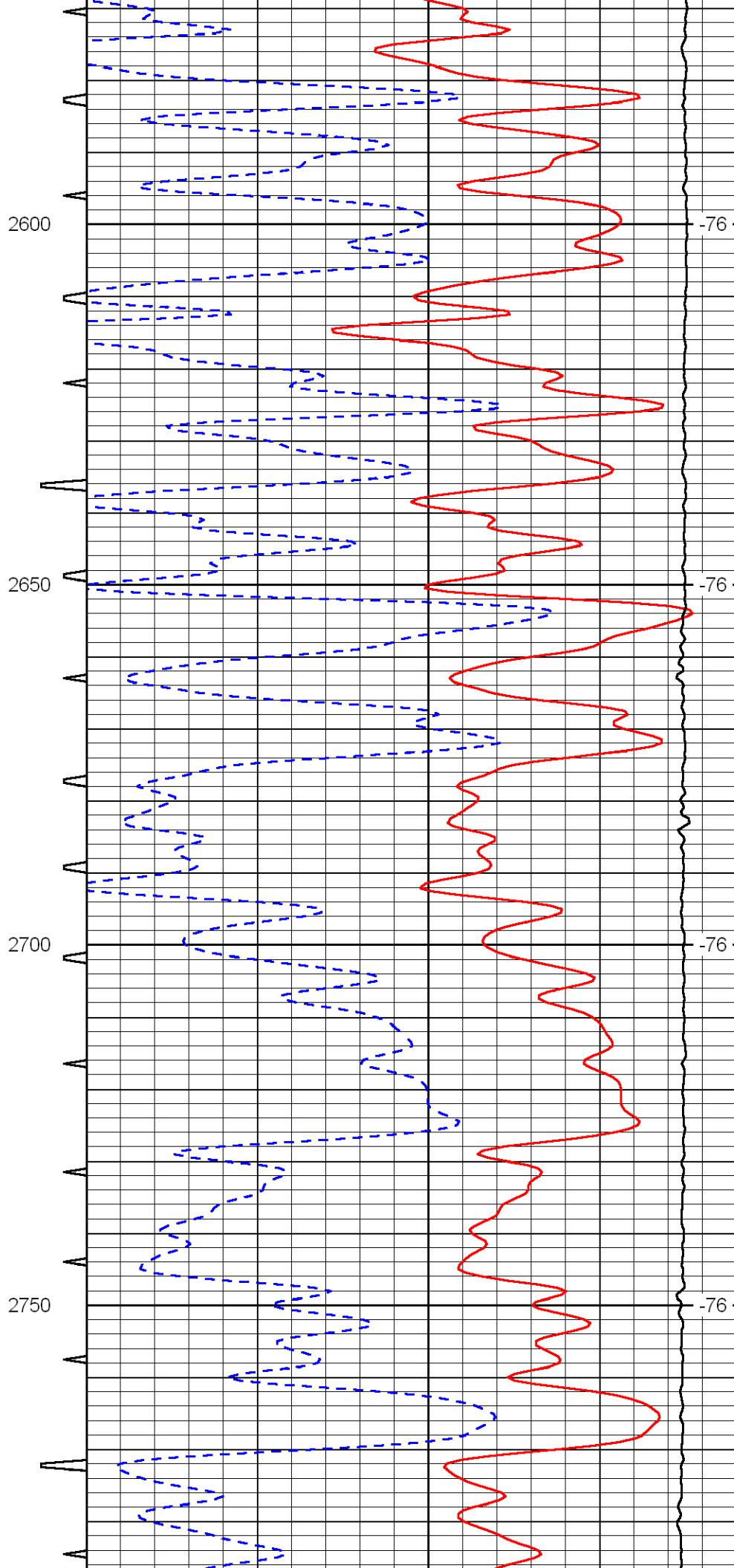
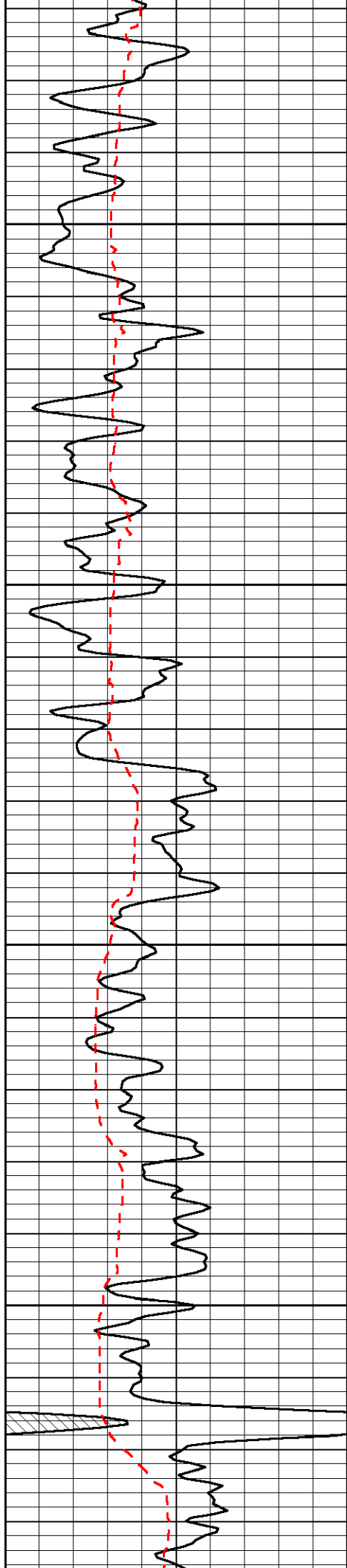


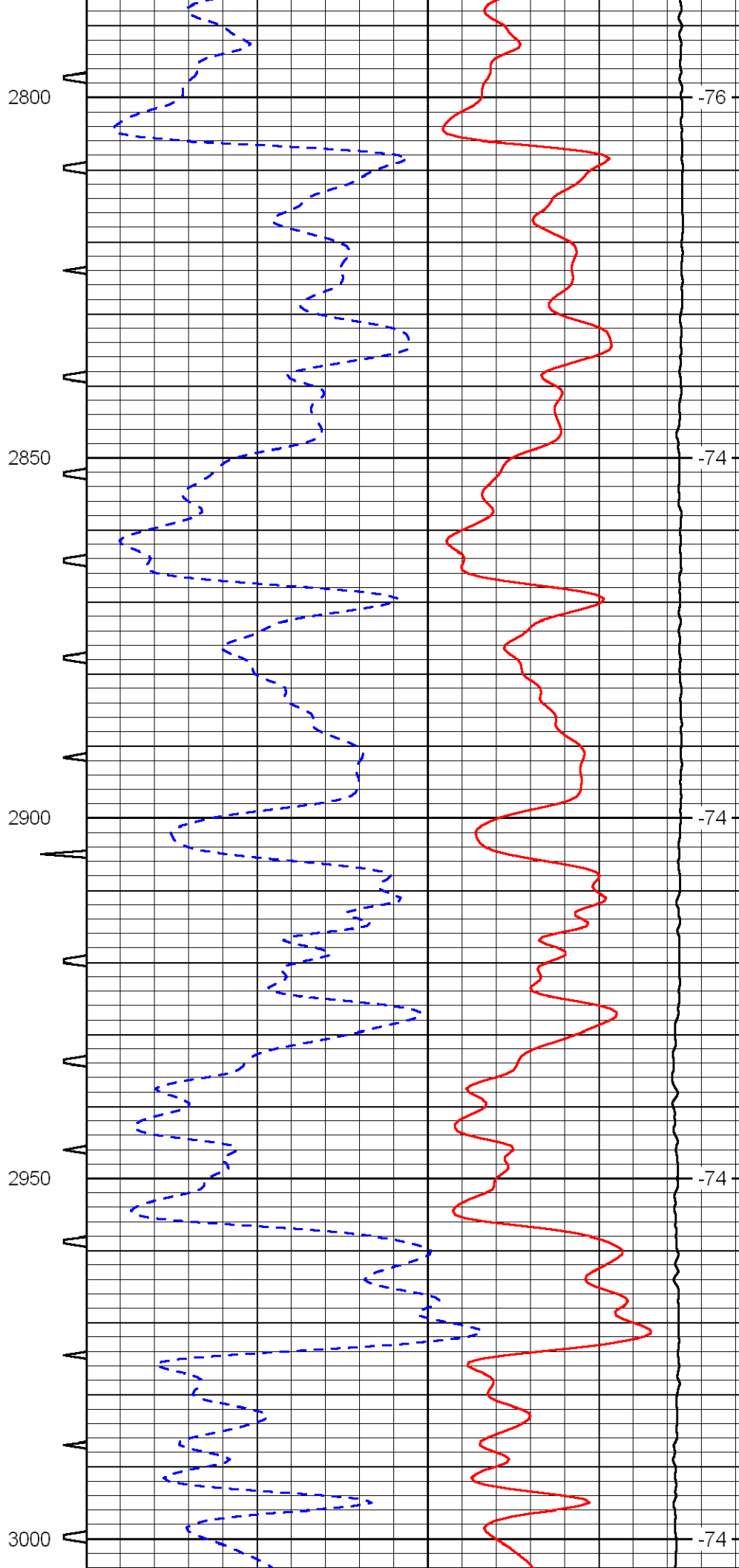
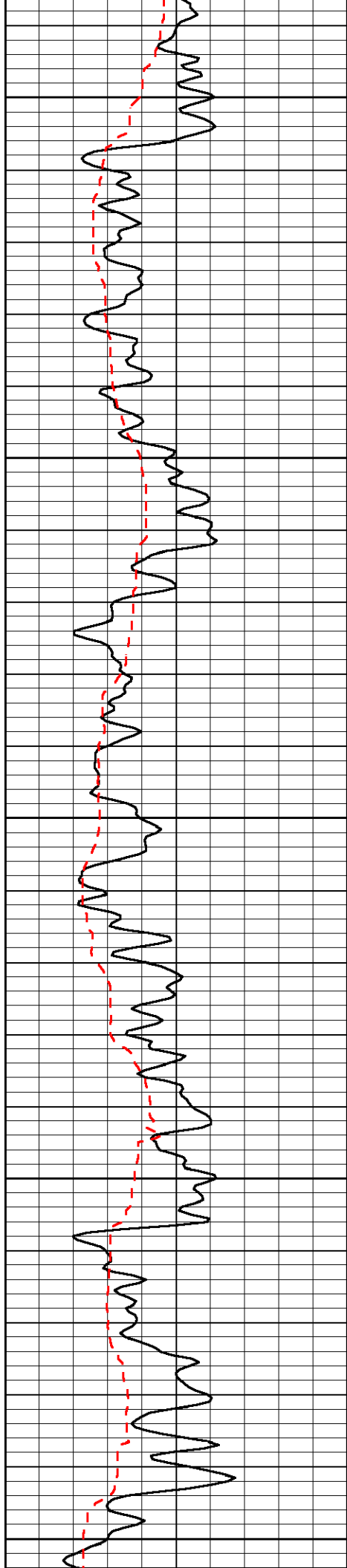


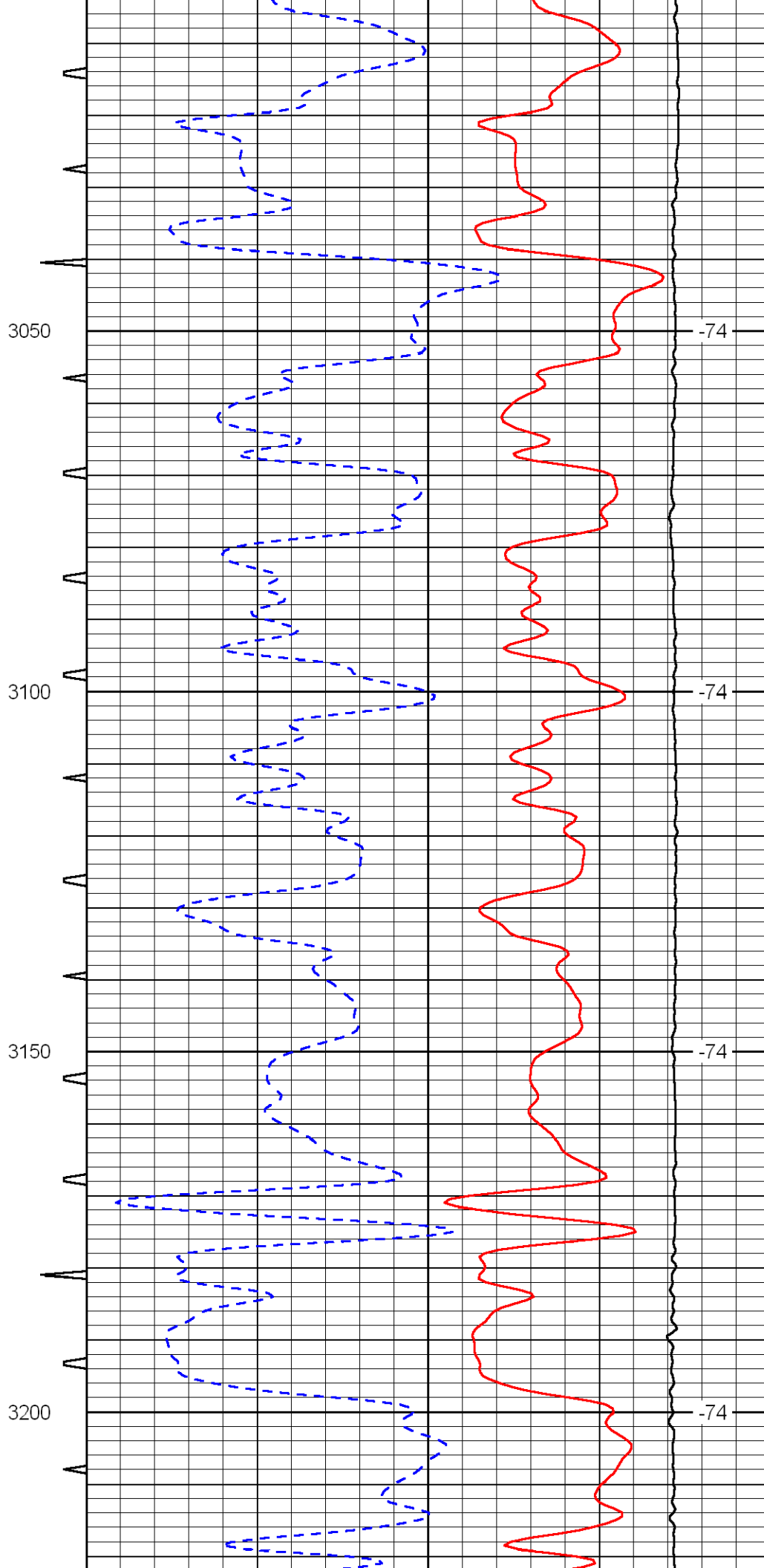
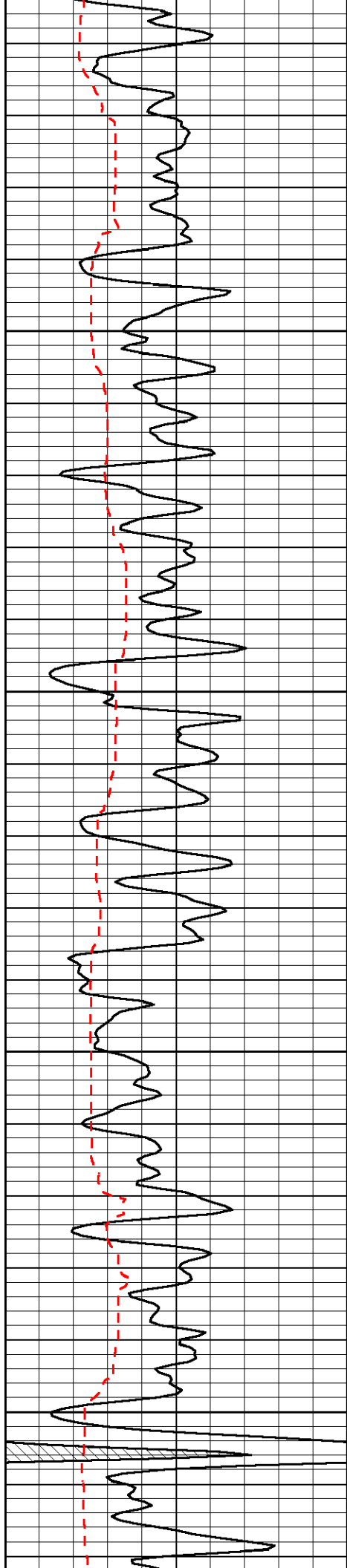


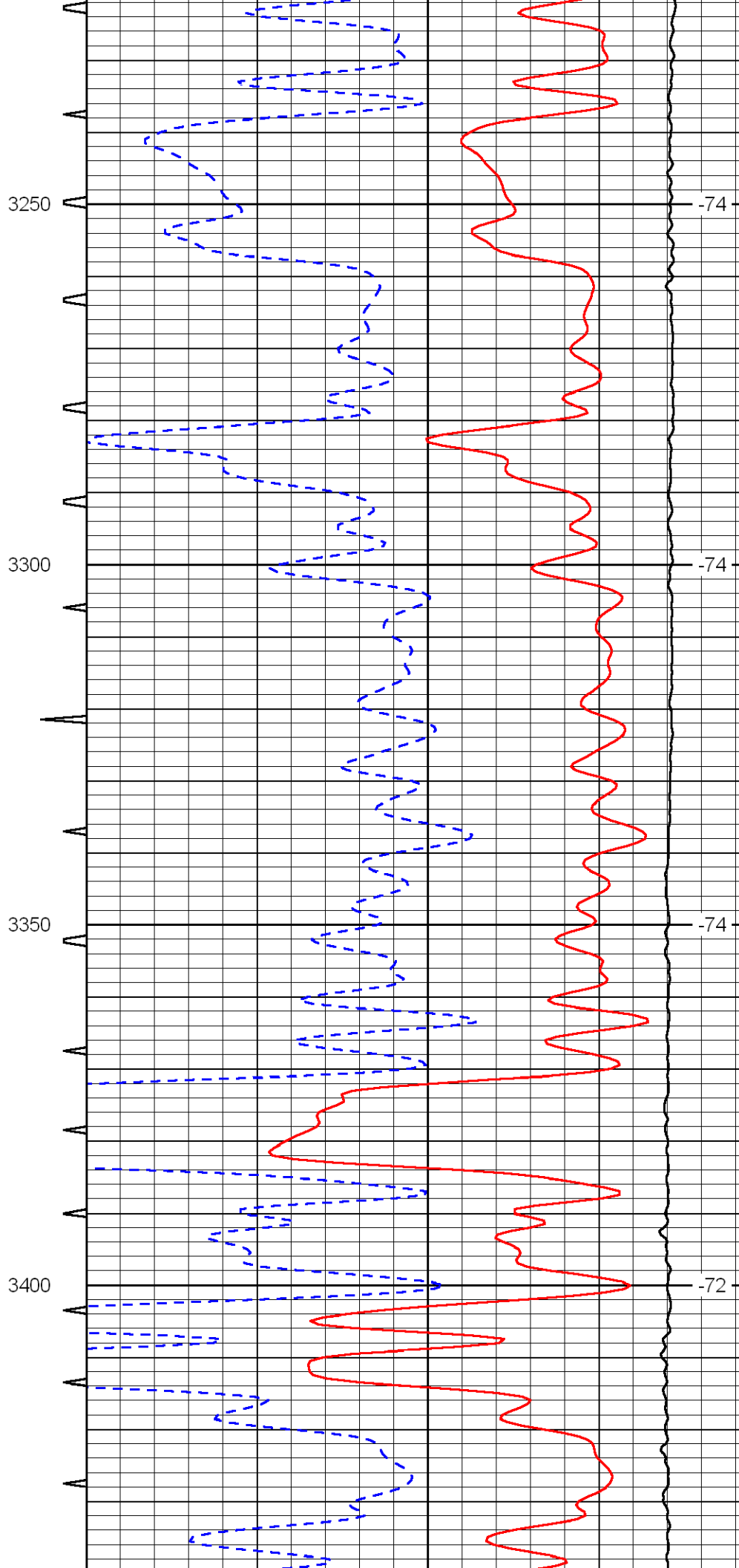
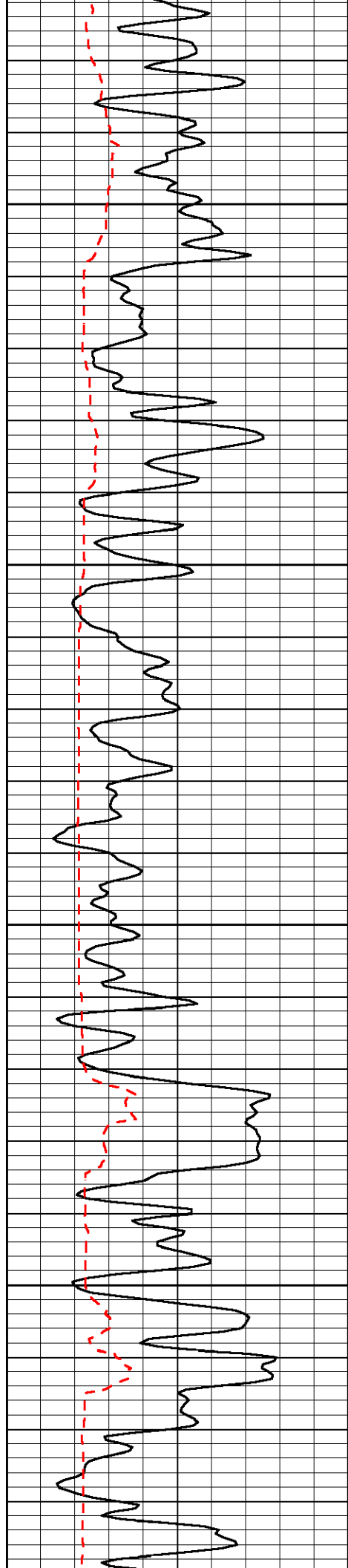


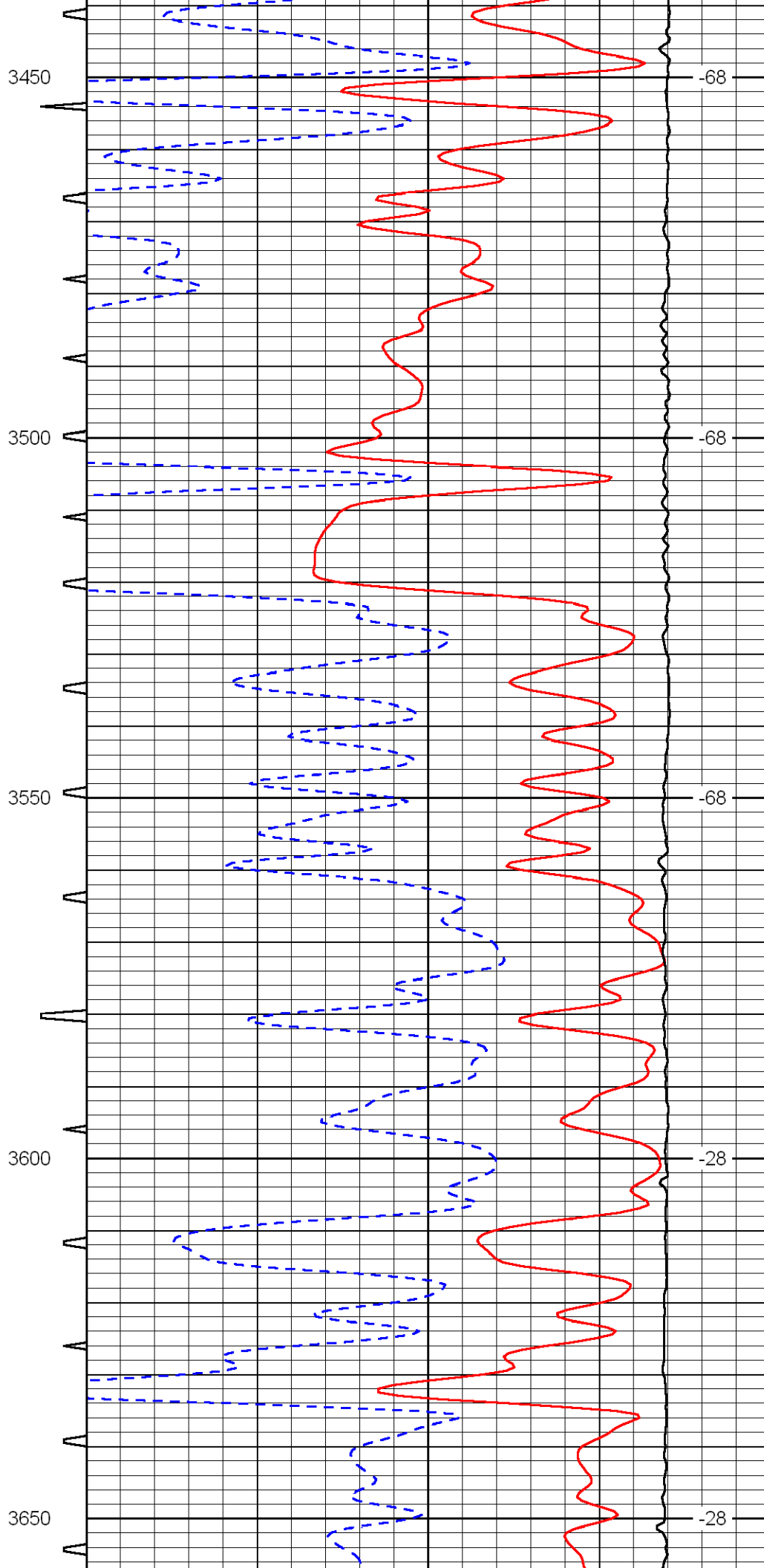
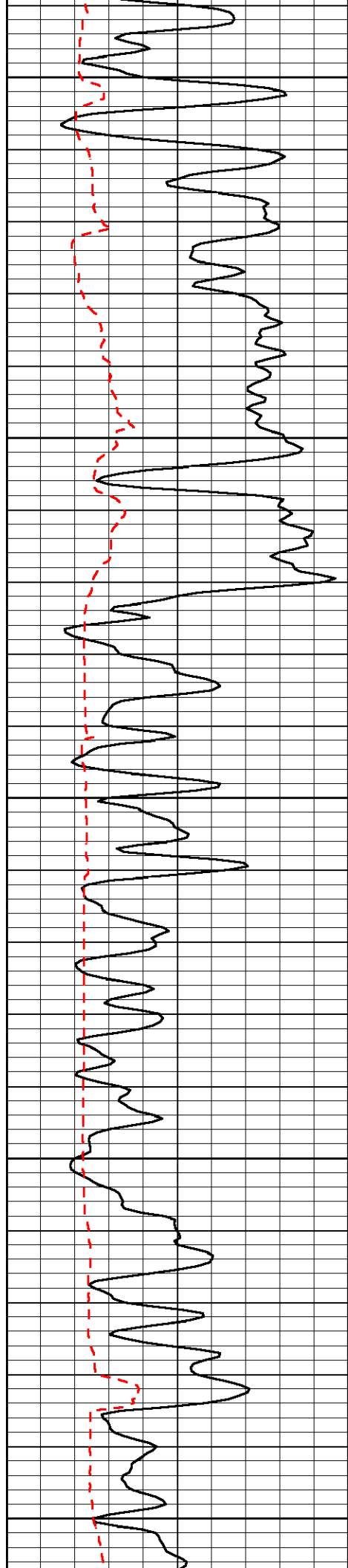


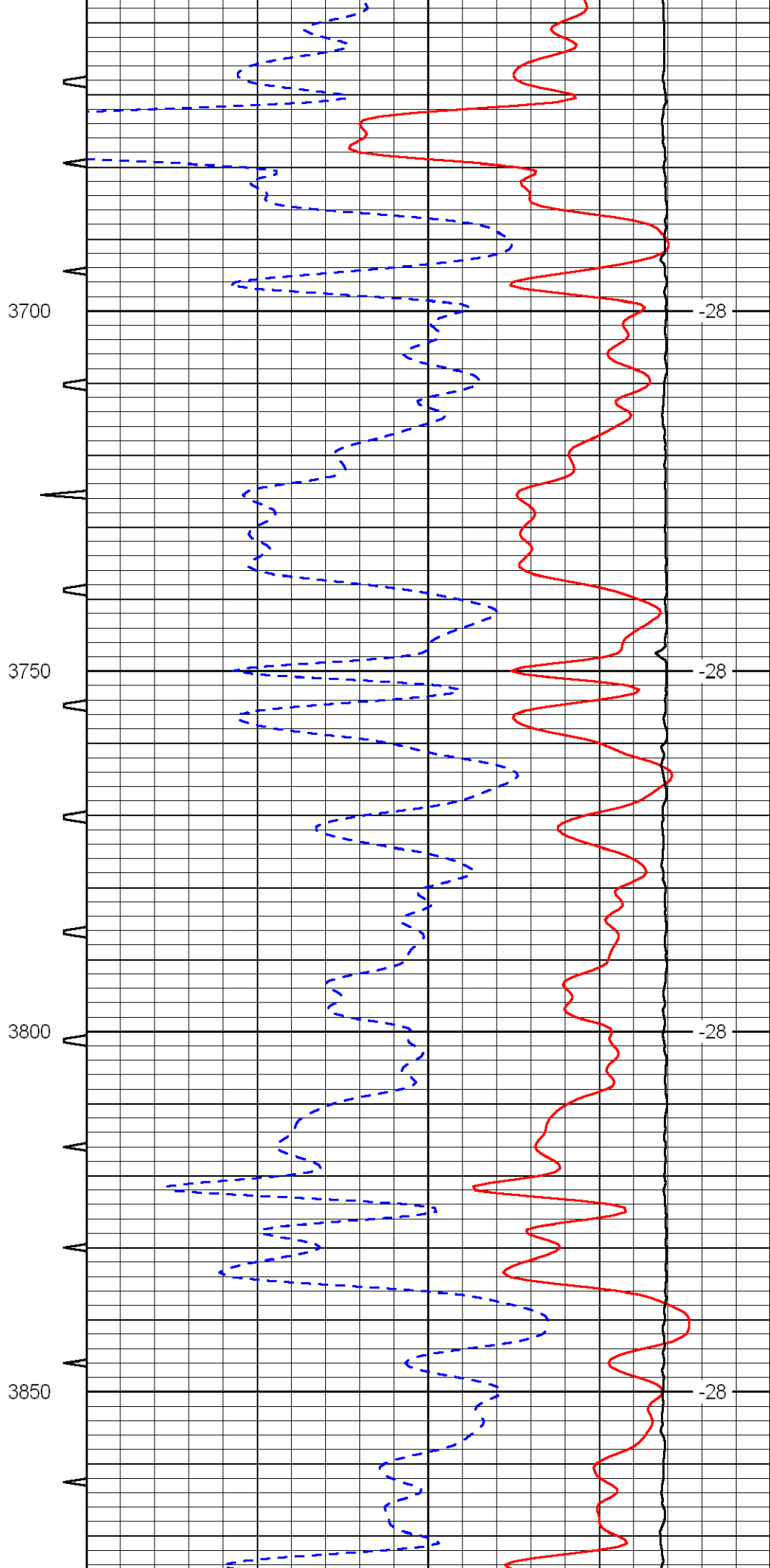
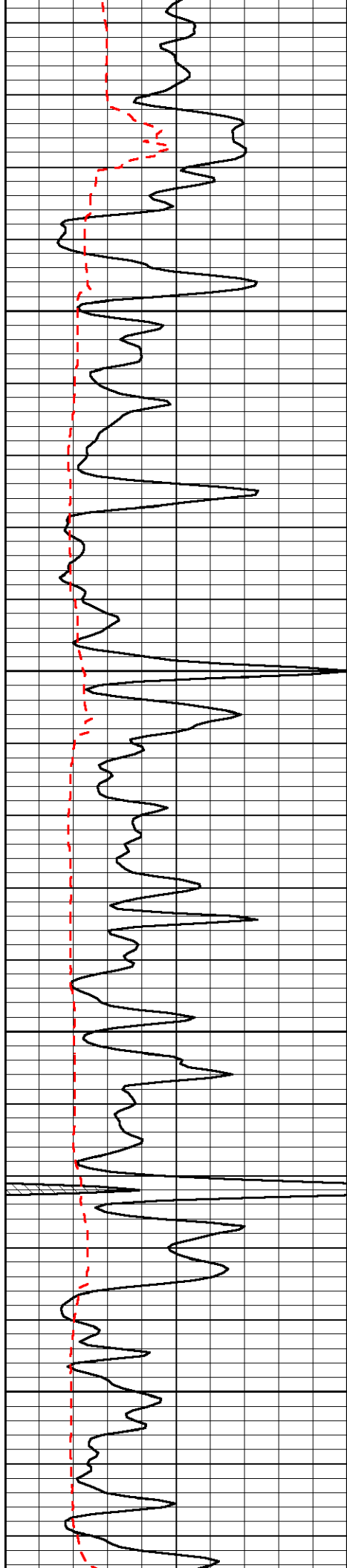


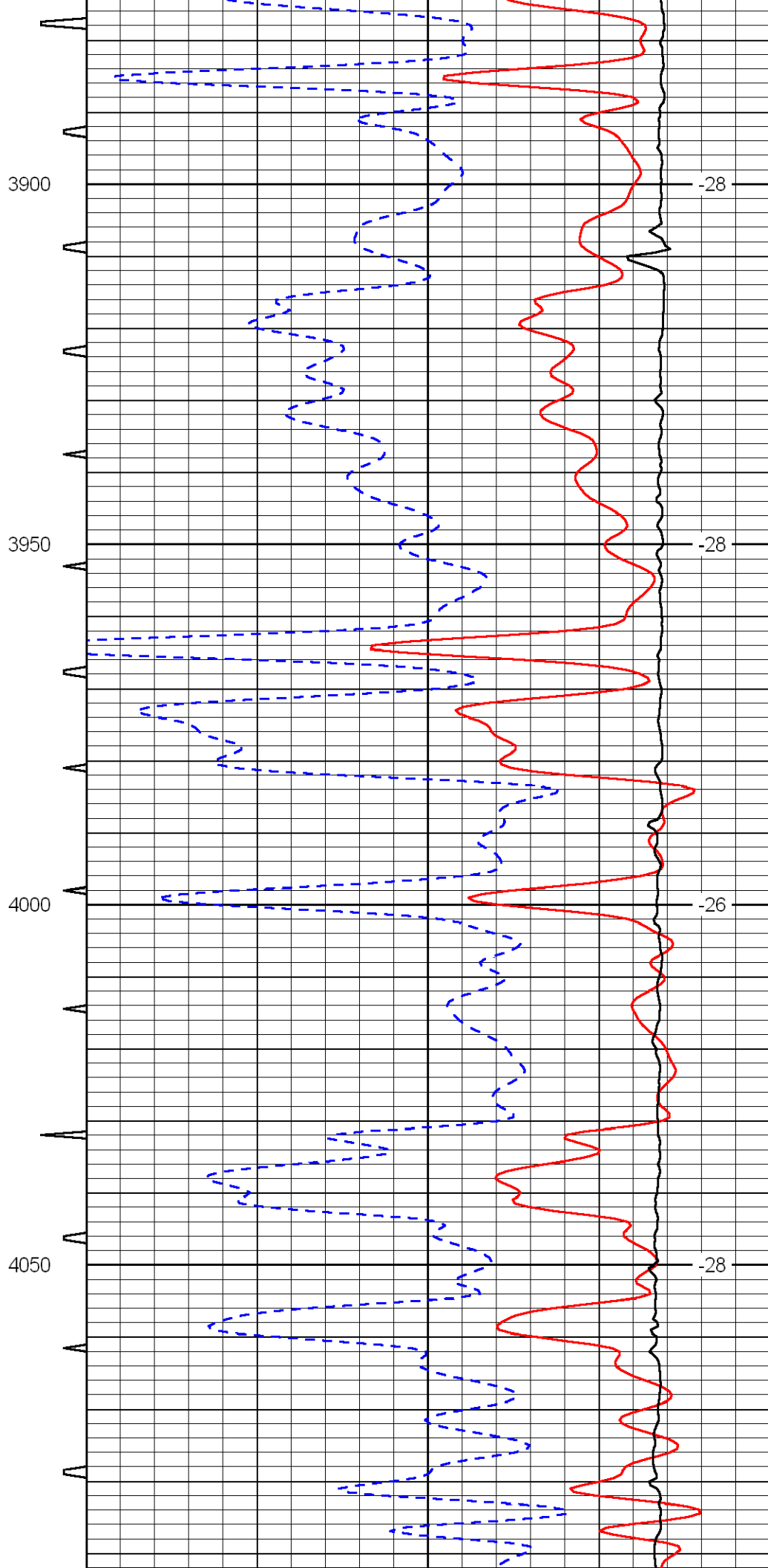
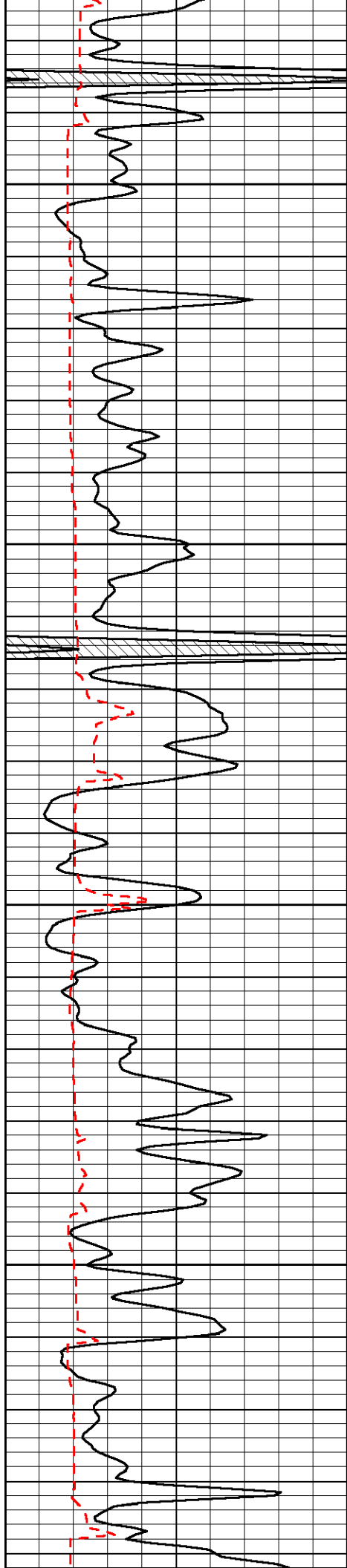


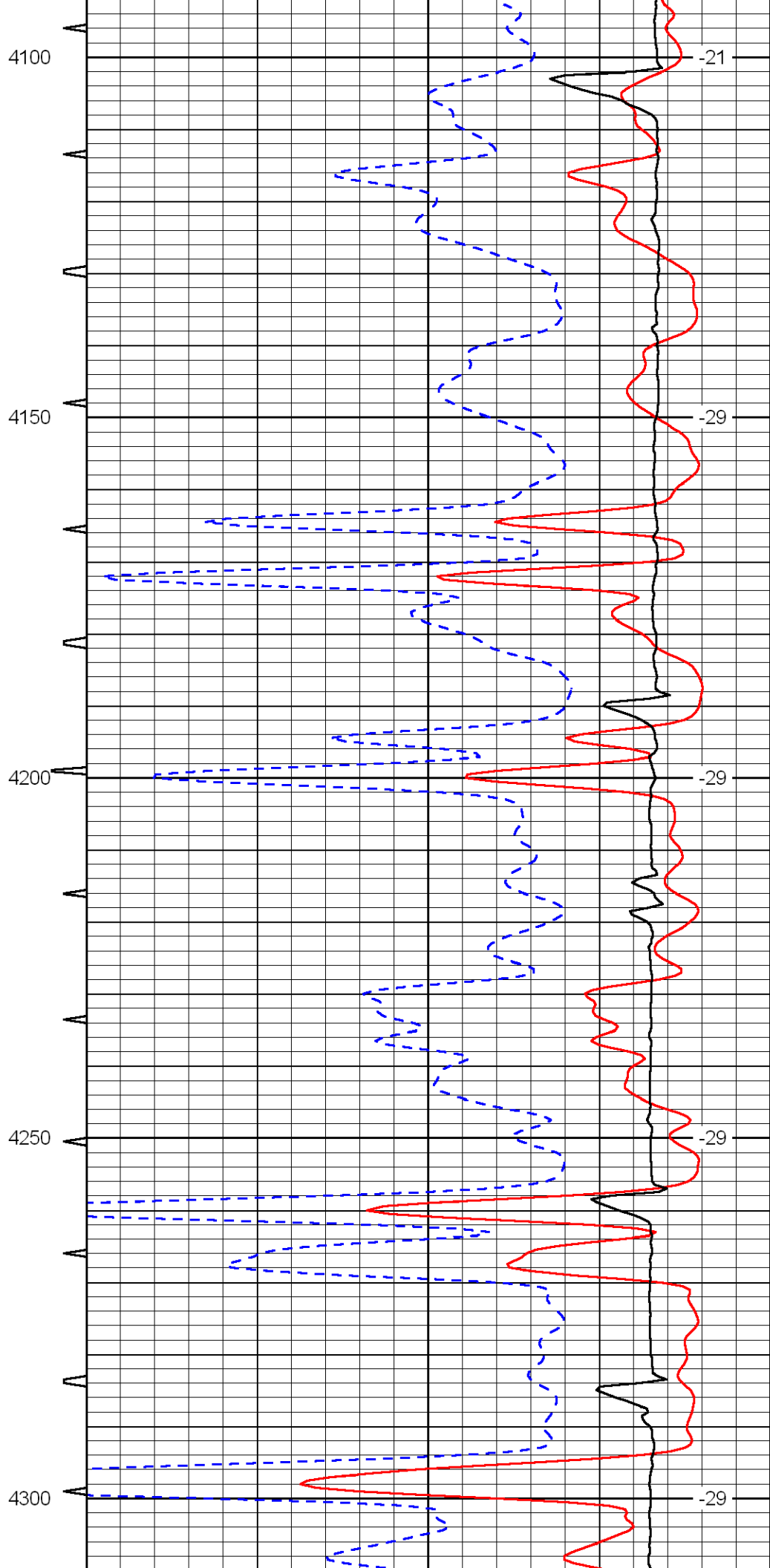
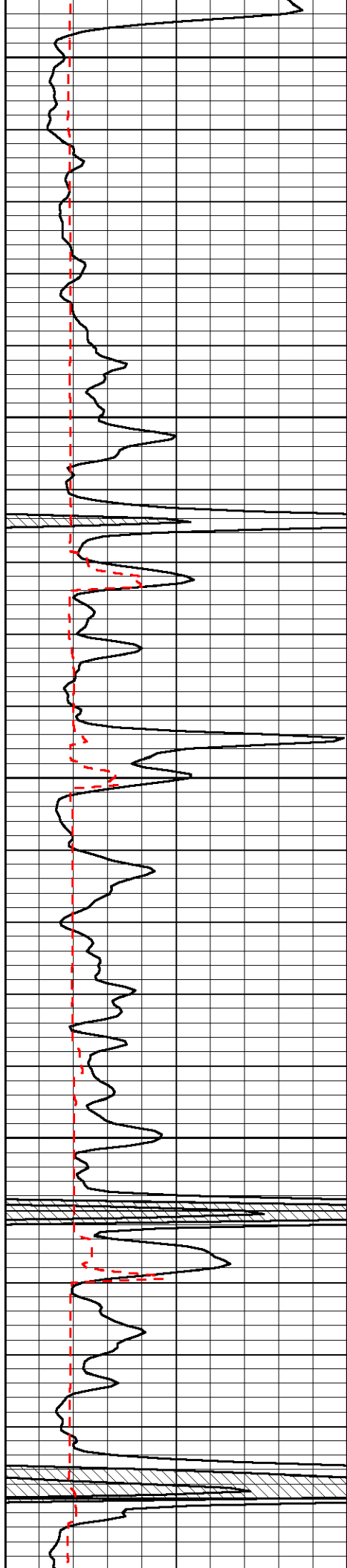


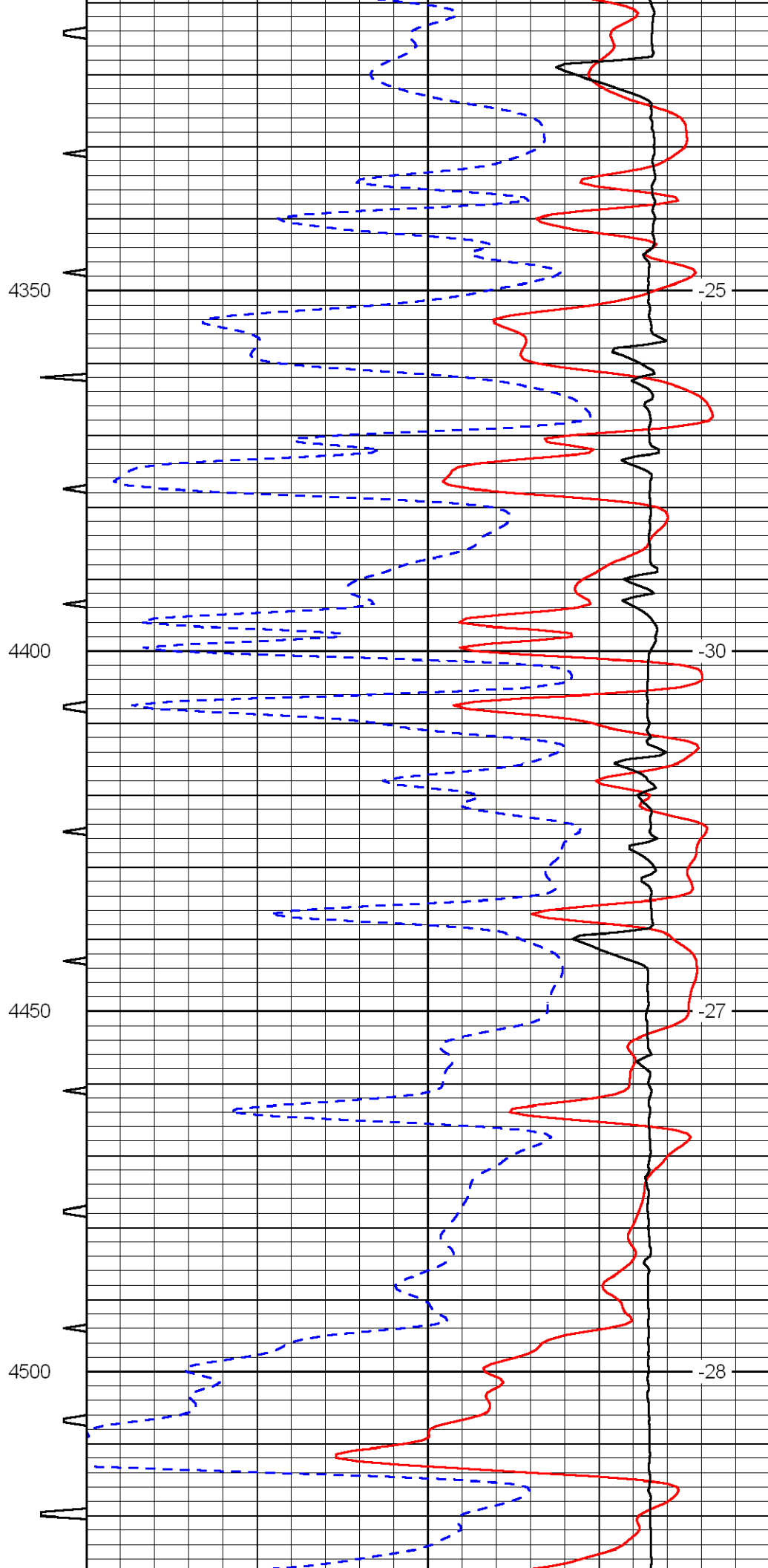
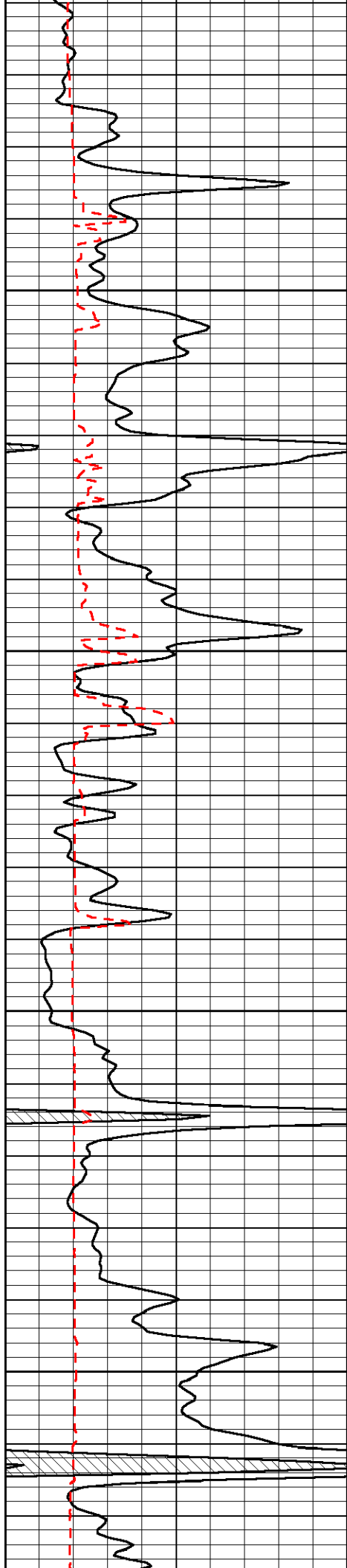


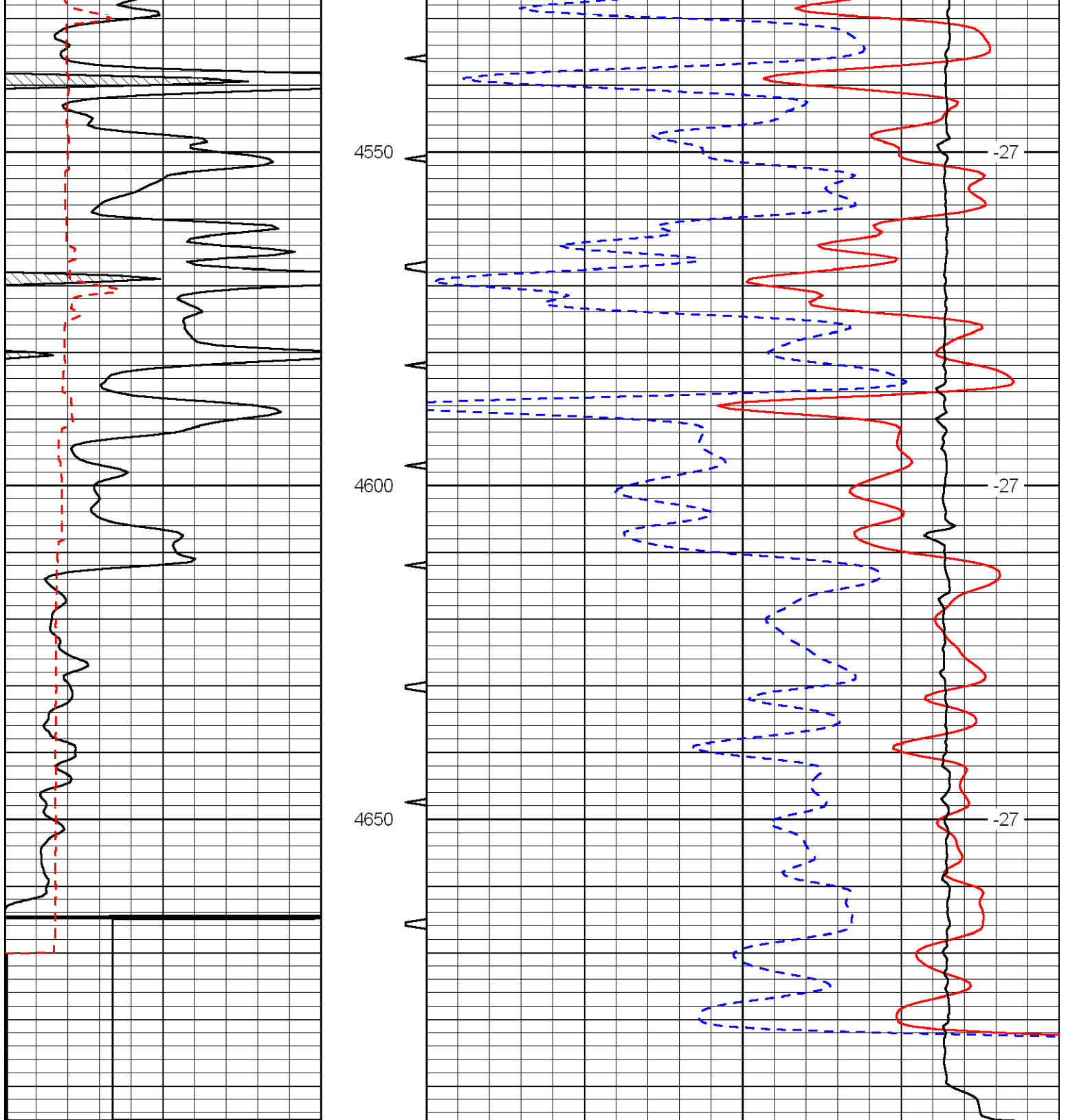












LSPD