



Microresistivity Log

DIGITAL LOG (785) 625-3858

API No.	15-101-22,243-00-00	
Company	Larson Engineering, Inc.	
Well	McLeish N o. 2-24	
Field	Wildcat	
County	Lane	State
Location	2495' FSL & 841' FEL	
Sec: 24	Twp: 18S	Rge: 27W
Other Services	CNL/CDL DIL/BHCS	
Elevation	K.B. 2652 D.F. 2645 G.L. 2645	

Permanent Datum	Ground Level	Elevation 2645
Log Measured From	Kelly Bushing	7 Ft. Above Perm. Datum
Drilling Measured From	Kelly Bushing	
Date	06/09/2010	
Run Number	Two	
Depth Driller	4685	
Depth Logger	4690	
Bottom Logged Interval	4689	
Top Log Interval	3600	
Casing Driller	8.625 @ 200	
Casing Logger	242	
Bit Size	7.875	
Type Fluid in Hole	Chemical	
Salinity, ppm CL	3.500	
Density / Viscosity	8.9	46
pH / Fluid Loss	10.5	7.6
Source of Sample	Flowline	
Rm @ Meas. Temp	.4	@ 76
Rmf @ Meas. Temp	.30	@ 76
Rmc @ Meas. Temp	.54	@ 76
Source of Rmf / Rmc	Charts	
Rm @ BHT	.24	@ 125
Operating Rig Time	4 1/2 Hours	
Max Rec. Temp. F	125	
Equipment Number	17	
Location	Hays	
Recorded By	Mike Garrison	
Witnessed By	Bob Lewelln	

<<< Fold Here >>>

All interpretations are opinions based on inferences from electrical or other measurements and we cannot and do not guarantee the accuracy or correctness of any interpretation, and we shall not, except in the case of gross or willful negligence on our part, be liable or responsible for any loss, costs, damages, or expenses incurred or sustained by anyone resulting from any interpretation made by any of our officers, agents or employees. These interpretations are also subject to our general terms and conditions set out in our current Price Schedule.

Comments

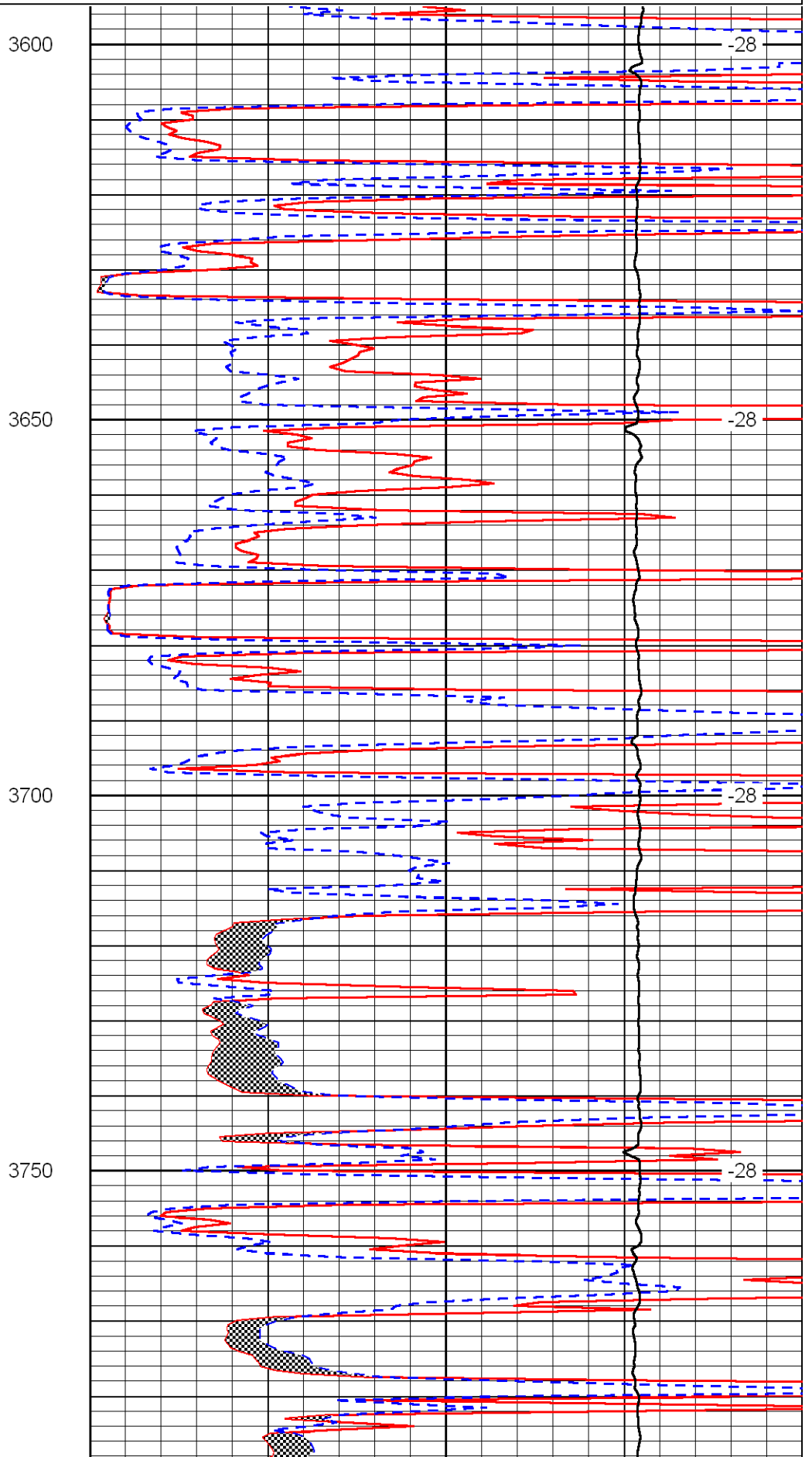
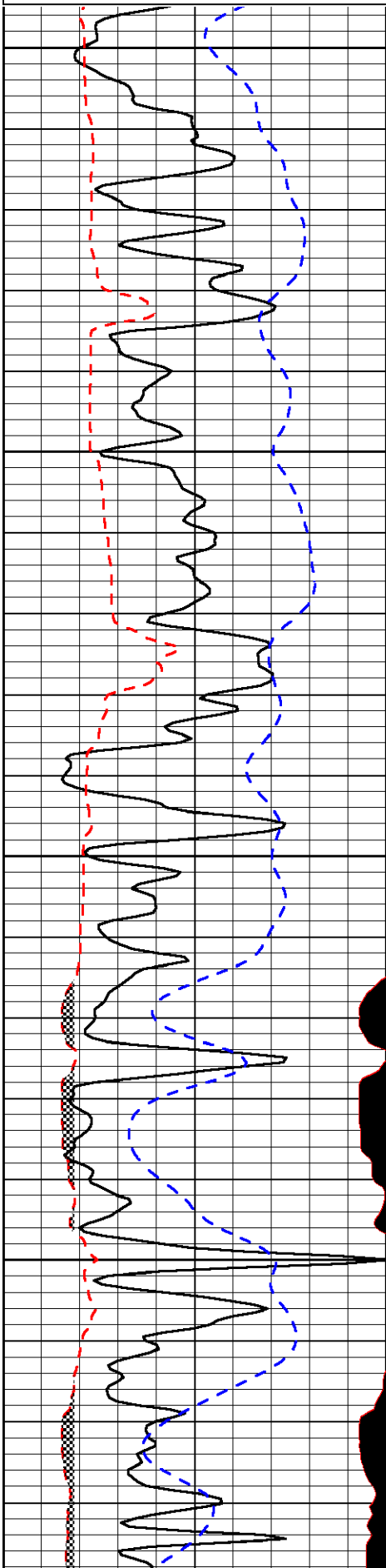
Thank you for using Log-Tech, Inc.
(785) 625-3858

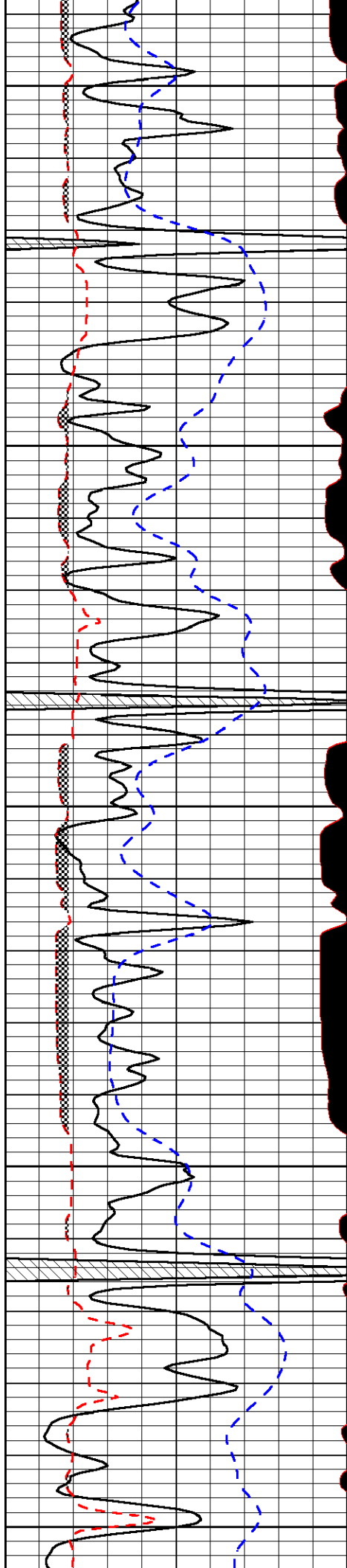
Ness City, West to County Line, North Into

Database File:	larson_mcleish-2-24hd.db
Dataset Pathname:	dil/larstck2
Presentation Format:	micro
Dataset Creation:	Wed Jun 09 04:16:37 2010
Charted by:	Depth in Feet scaled 1:240

0	Gamma Ray	150
6	MCAL (GAPI)	16
2.875	Mud Cake (GAPI)	7.875
-200	SP	0

0	Micro Inverse 1 X 1	40
0	Micro Normal 2"	40
10000	Line Weight	0
	LSPD	





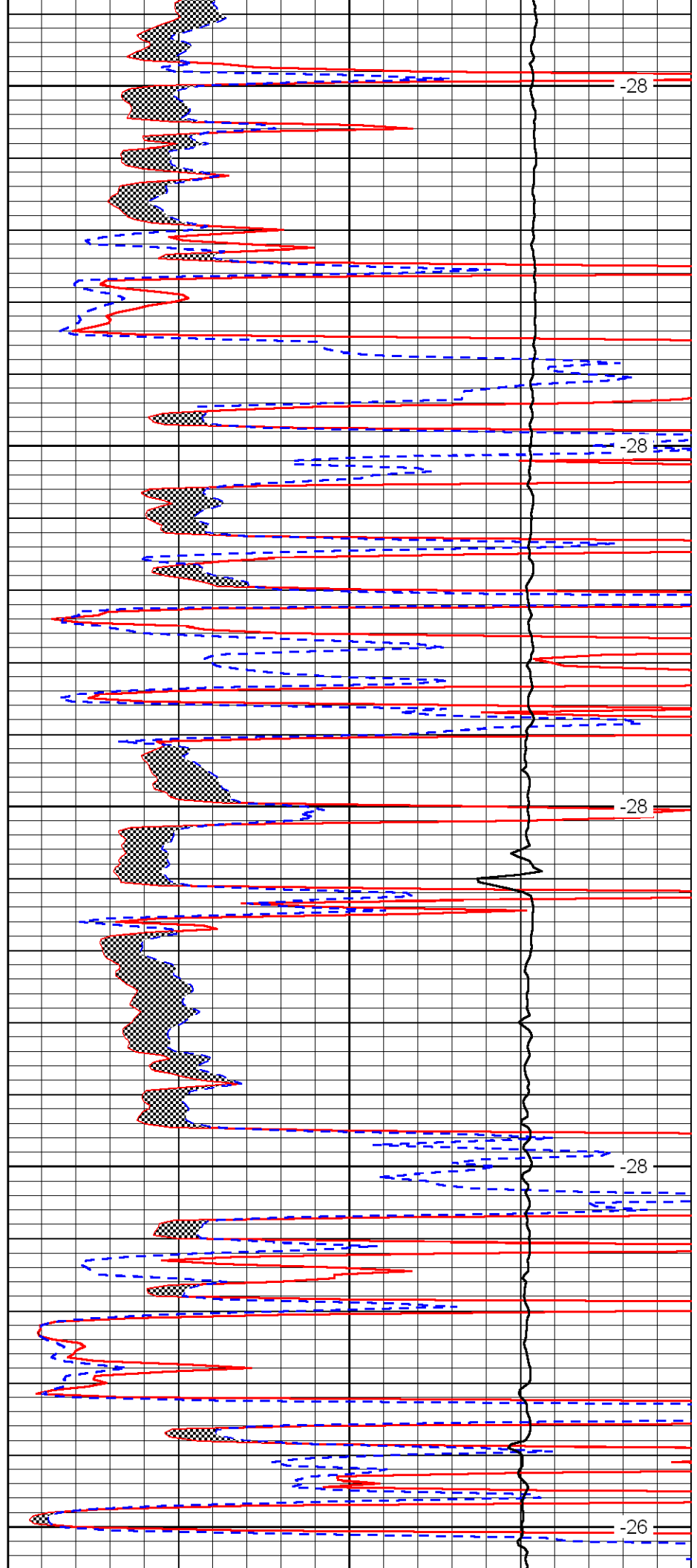
3800

3850

3900

3950

4000



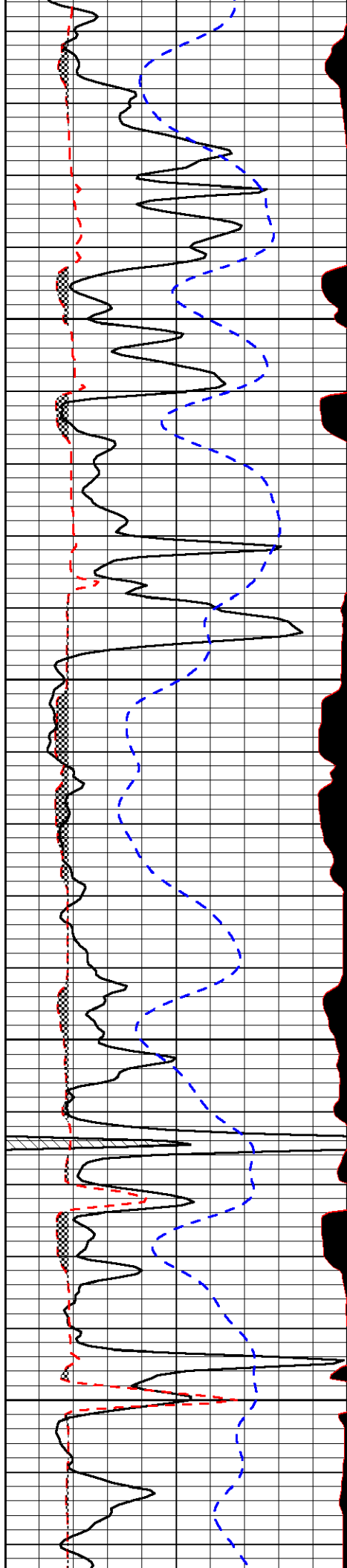
-28

-28

-28

-28

-26

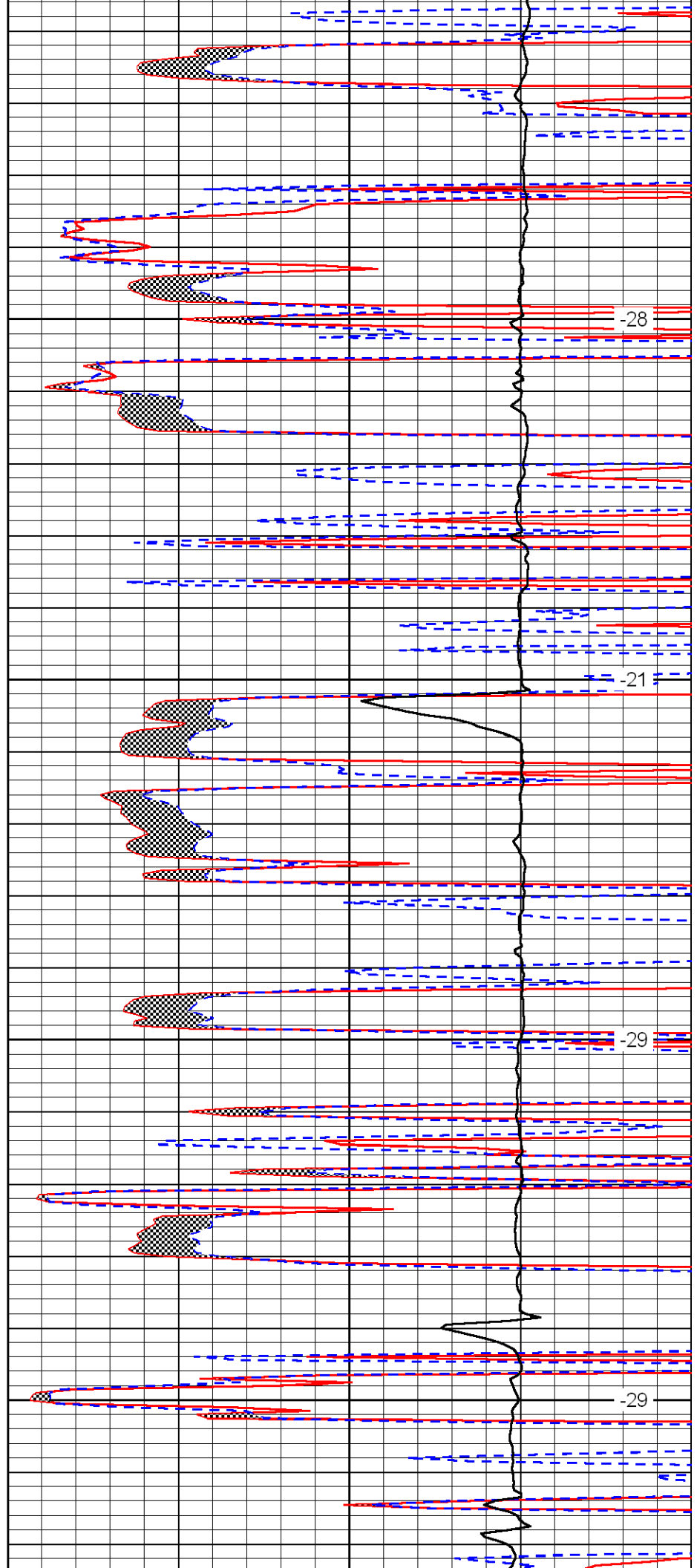


4050

4100

4150

4200

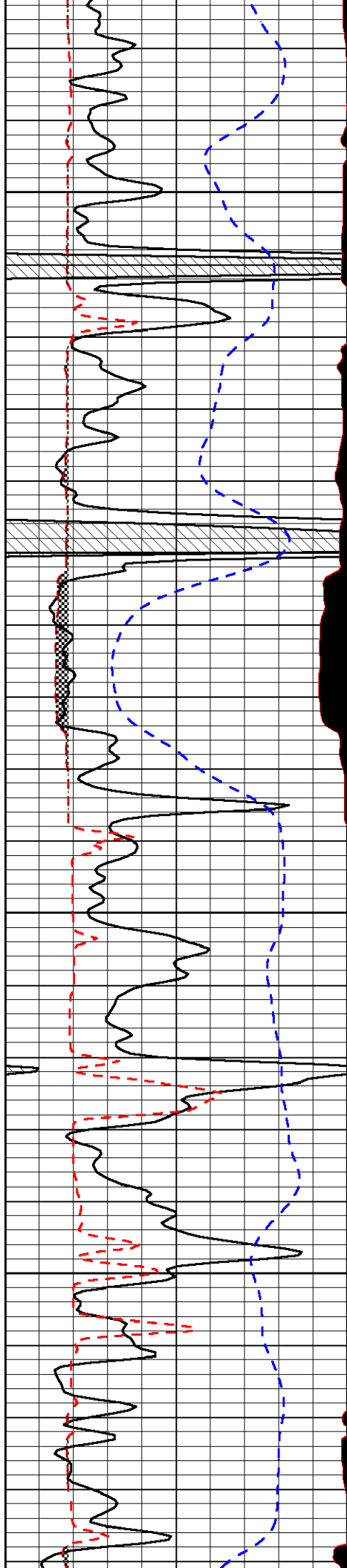


-28

-21

-29

-29

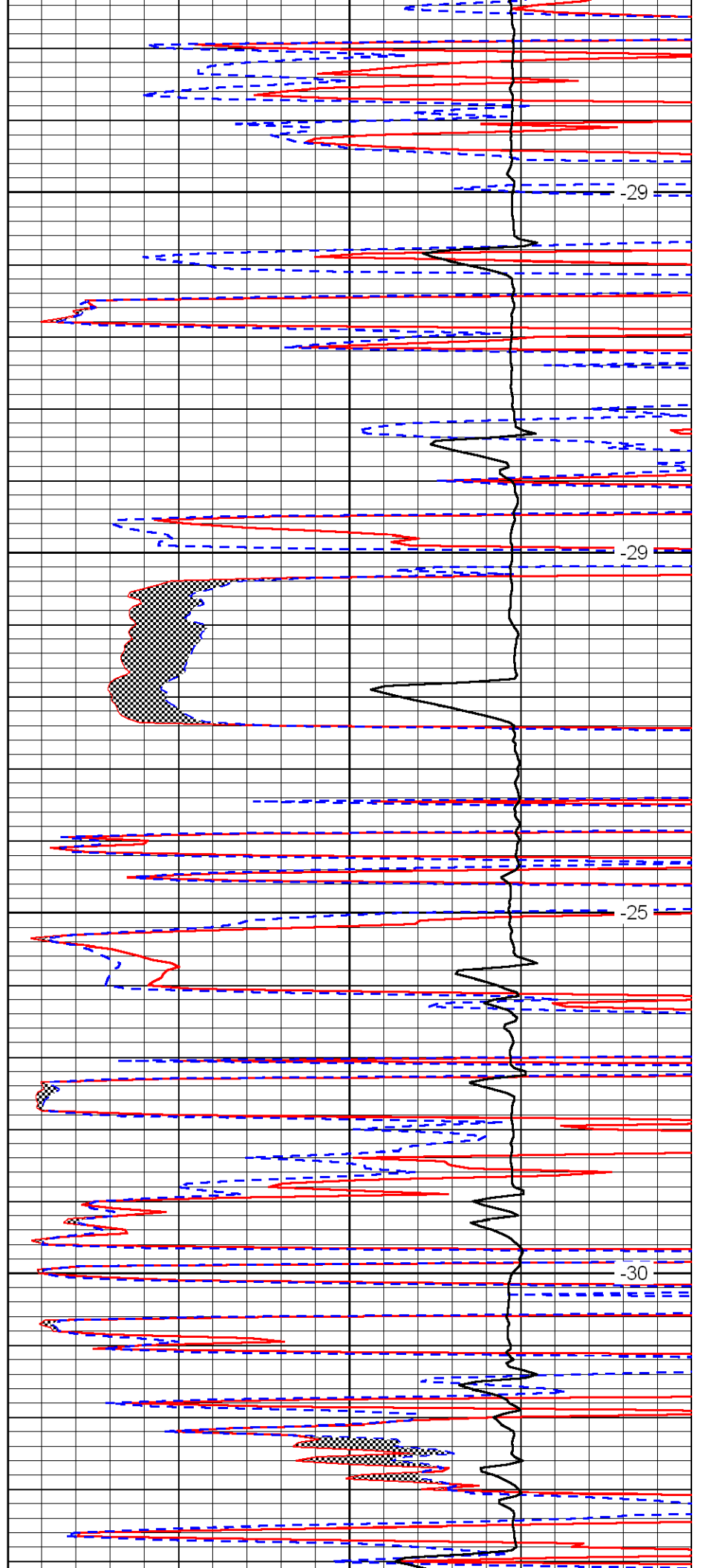


4250

4300

4350

4400

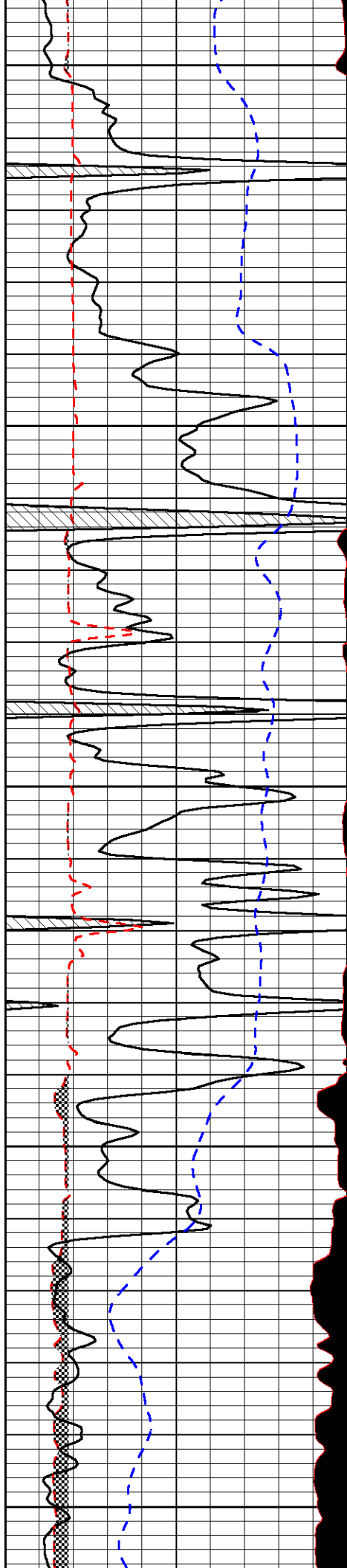


-29

-29

-25

-30



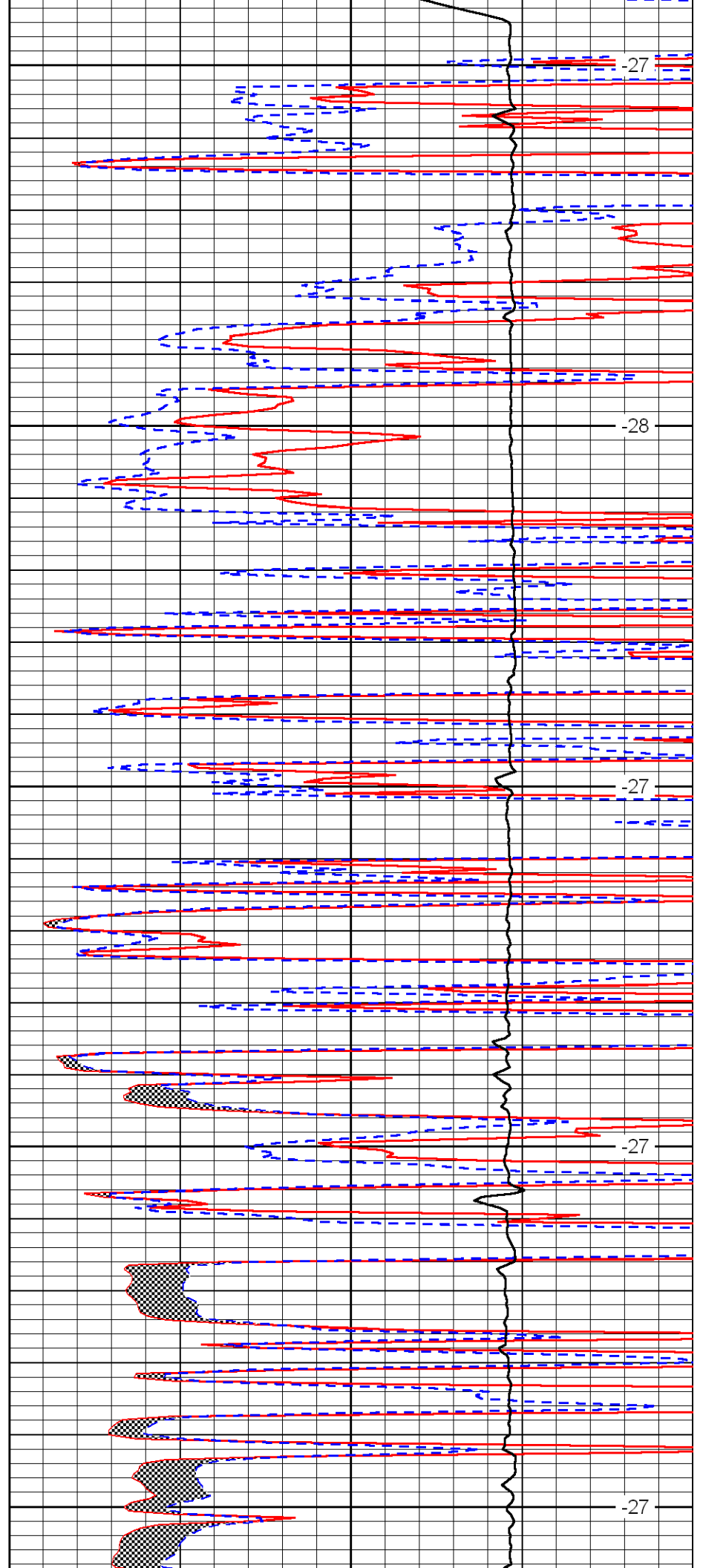
4450

4500

4550

4600

4650



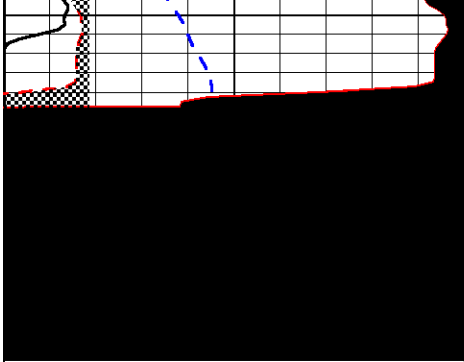
-27

-28

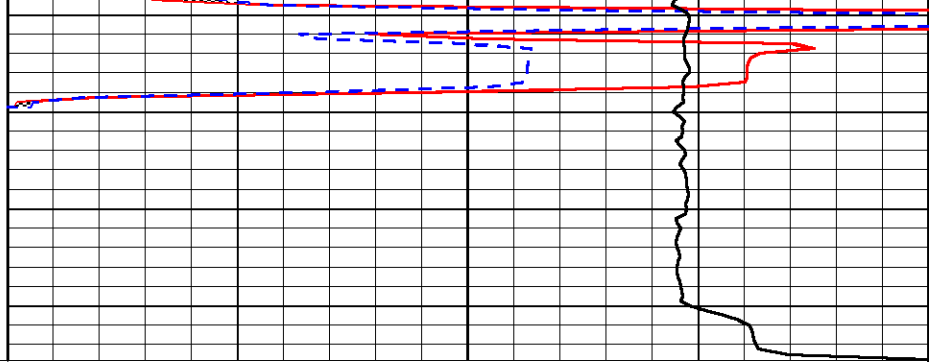
-27

-27

-27



0	Gamma Ray	150
6	MCAL (GAPI)	16
2.875	Mud Cake (GAPI)	7.875
-200	SP	0



0	Micro Inverse 1 X 1	40
0	Micro Normal 2''	40
10000	Line Weight	0
		LSPD