



Dual Compensated Porosity Log

DIGITAL LOG (785) 625-3858

API No.	15-101-22,243-00-00	
Company	Larson Engineering, Inc.	
Well	McLeish N o. 2-24	
Field	Wildcat	
County	Lane	State Kansas
Location	2495' FSL & 841' FEL	
Sec: 24	Twp: 18S	Rge: 27W
Permament Datum	Ground Level	Elevation 2645
Log Measured From	Kelly Bushing	7 Ft. Above Perm. Datum
Drilling Measured From	Kelly Bushing	K.B. 2652 D.F. 2645 G.L. 2645
Other Services	DIL MEL/BHCS	

Date	06/09/2010	
Run Number	One	
Type Log	CNL / CDL	
Depth Driller	4685	
Depth Logger	4690	
Bottom Logged Interval	4669	
Top Logged Interval	3600	
Type Fluid In Hole	Chemical	
Salinity, PPM CL	3,500	
Density	8.9	
Level	Full	
Max. Rec. Temp. F	125	
Operating Rig Time	4 1/2 Hours	
Equipment -- Location	17 Hays	
Recorded By	Mike Garrison	
Witnessed By	Bob Lewelln	

Borehole Record				Casing Record			
Run No	Bit	From	To	Size	Wgt.	From	To
One	12.25	00	250	8.625	23#	00	250
Two	7.875	250	TD				

<<< Fold Here >>>

All interpretations are opinions based on inferences from electrical or other measurements and we cannot and do not guarantee the accuracy or correctness of any interpretation, and we shall not, except in the case of gross or willful negligence on our part, be liable or responsible for any loss, costs, damages, or expenses incurred or sustained by anyone resulting from any interpretation made by any of our officers, agents or employees. These interpretations are also subject to our general terms and conditions set out in our current Price Schedule.

Comments

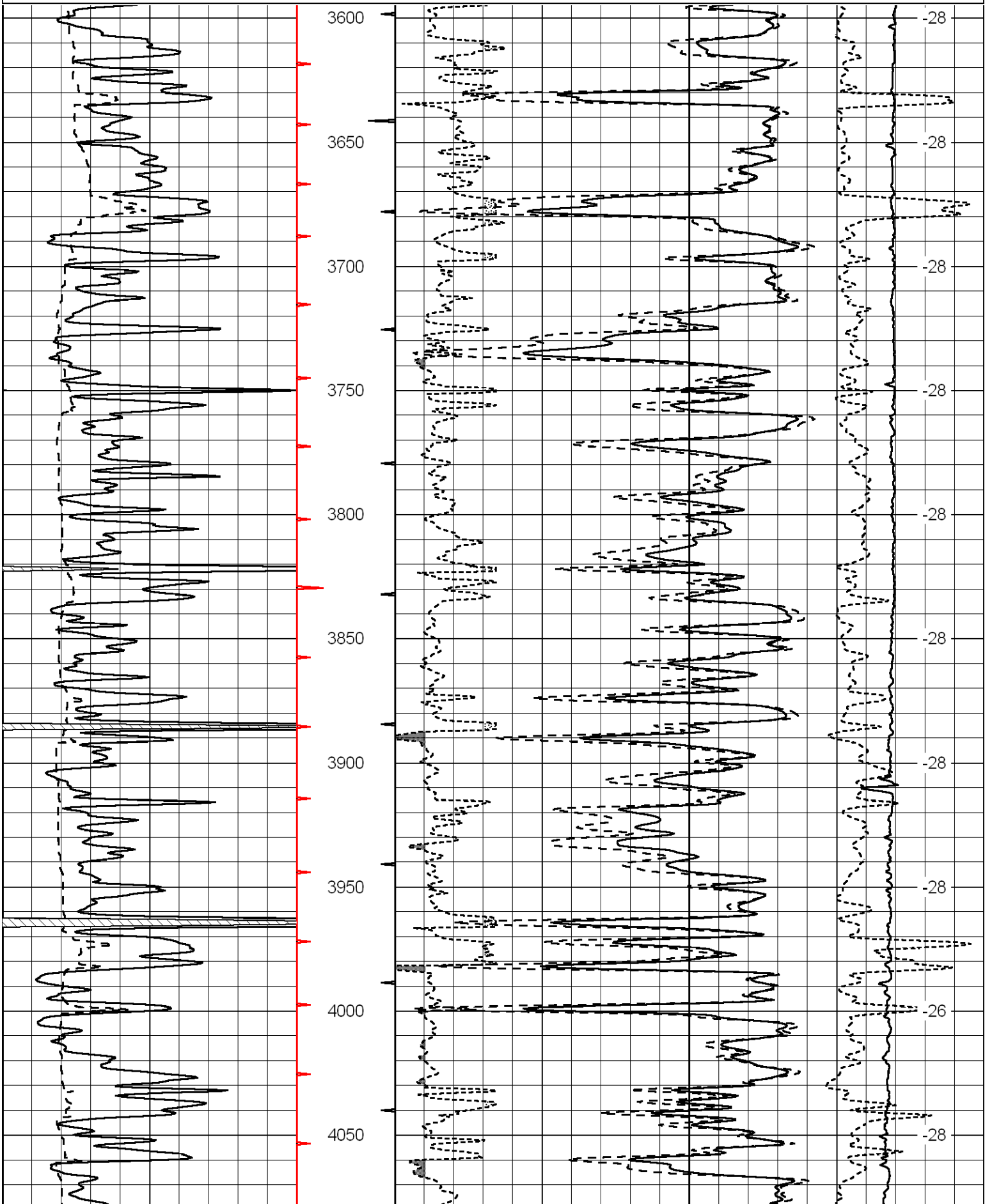
Thank you for using Log-Tech, Inc.
(785) 625-3858

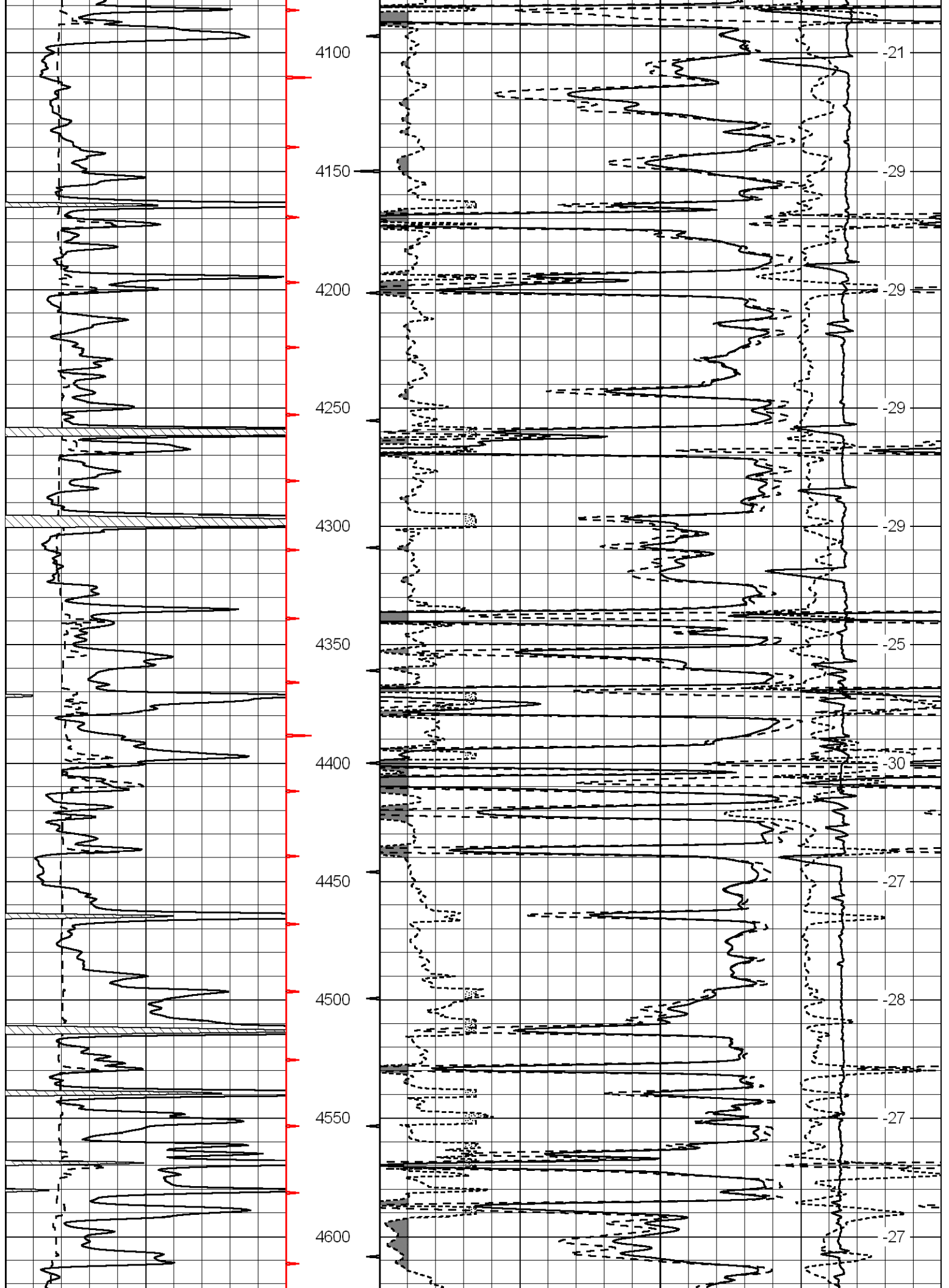
Ness City, West to County Line, North Into

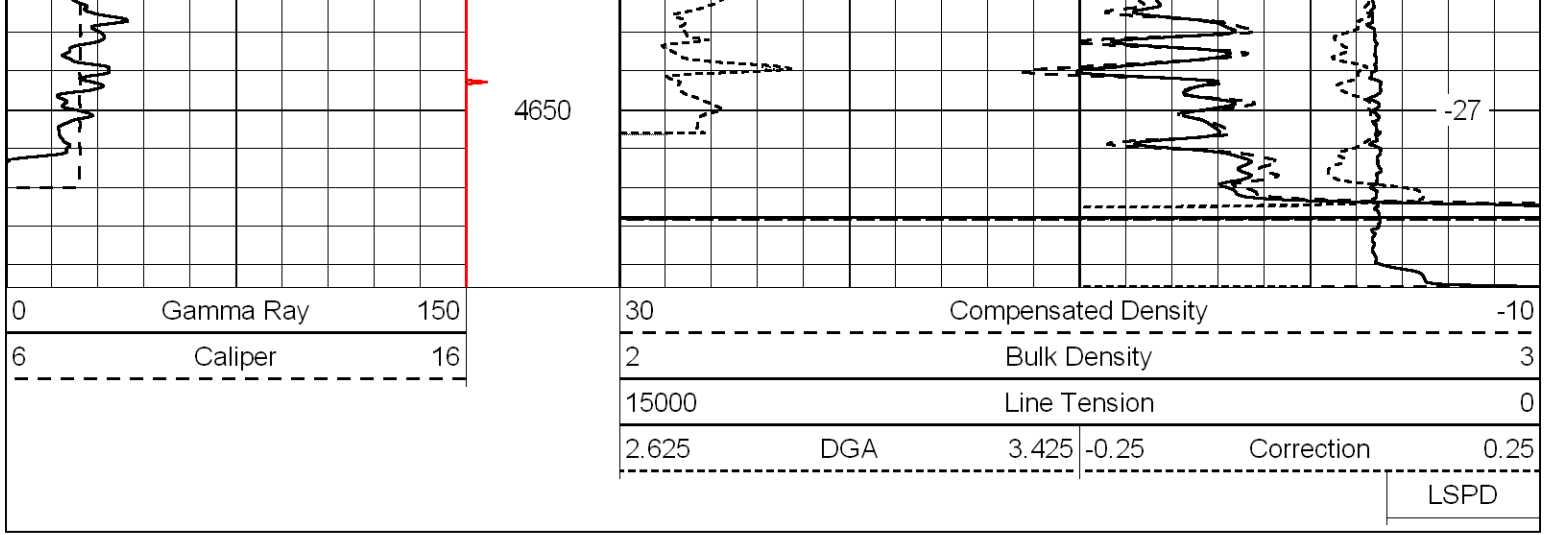
Database File: laron_mcleish-2-24hd.db
 Dataset Pathname: dil/larstck2
 Presentation Format: cdl
 Dataset Creation: Wed Jun 09 04:16:37 2010
 Charted by: Depth in Feet scaled 1:600

0	Gamma Ray	150
6	Caliper	16

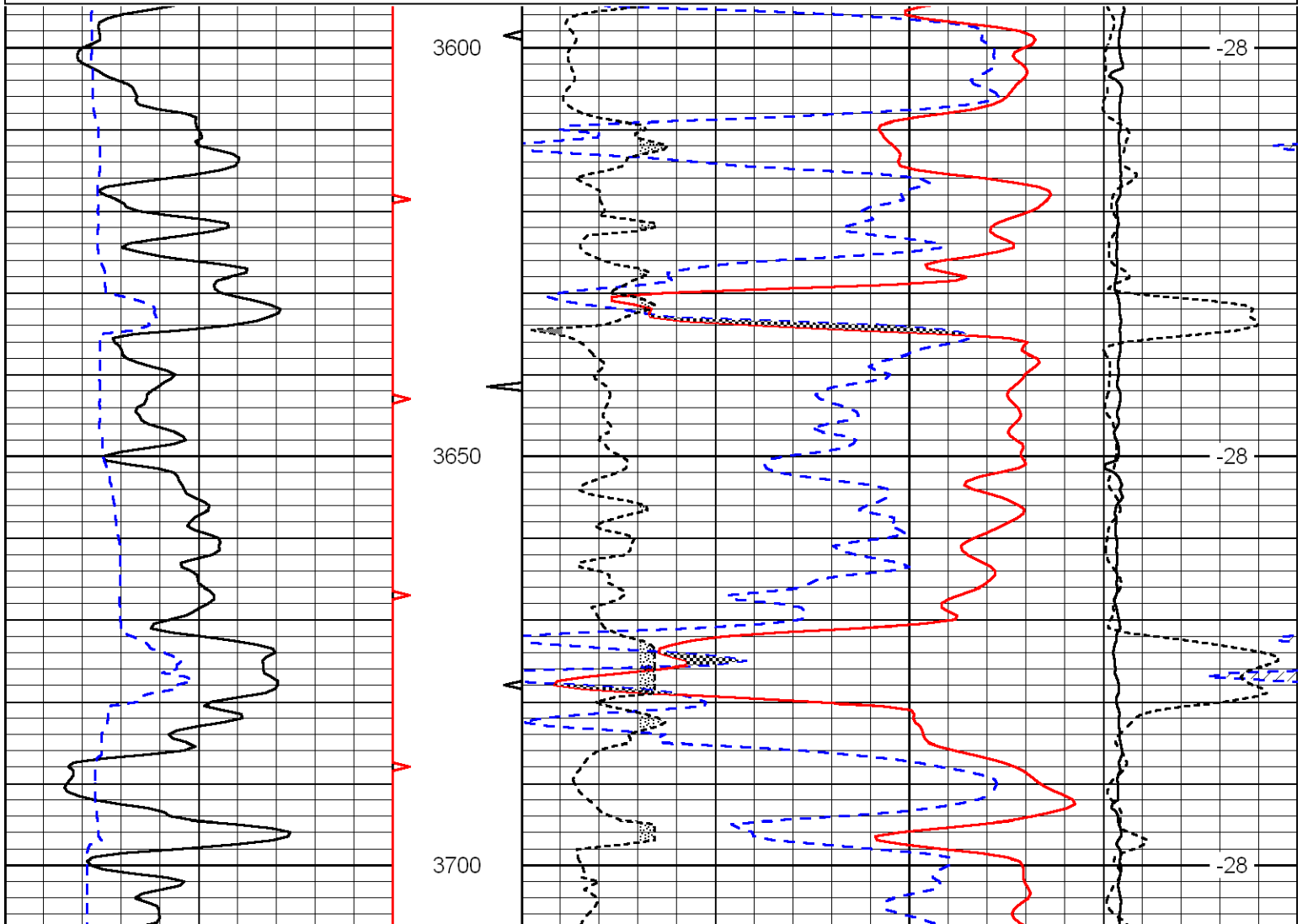
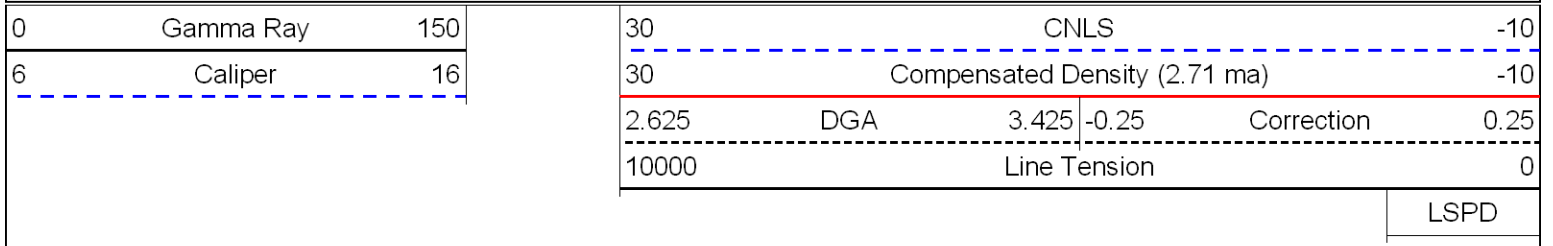
30	Compensated Density		-10
2	Bulk Density		3
15000	Line Tension		0
2.625	DGA	3.425	-0.25
Correction			0.25
LSPD			

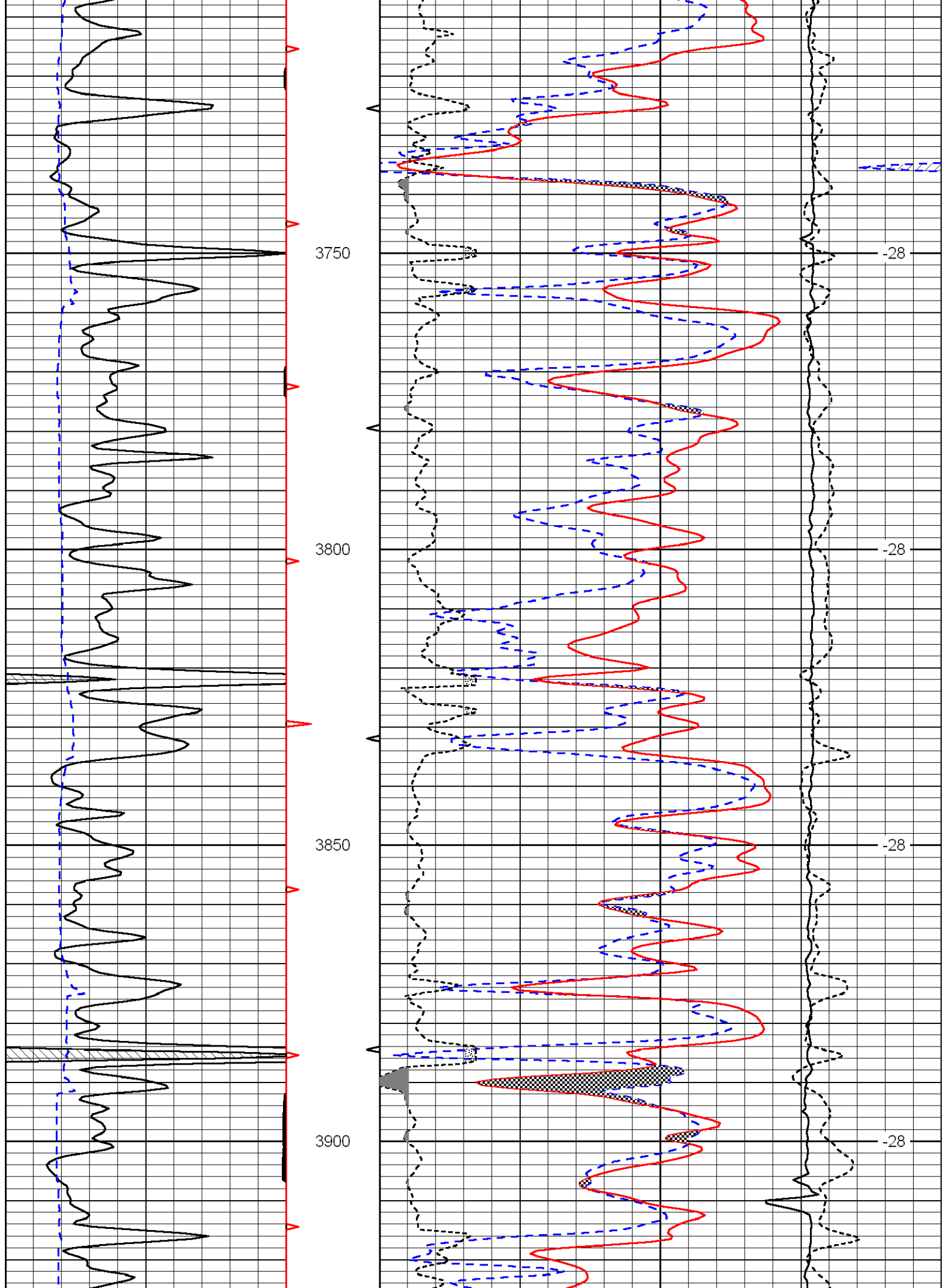


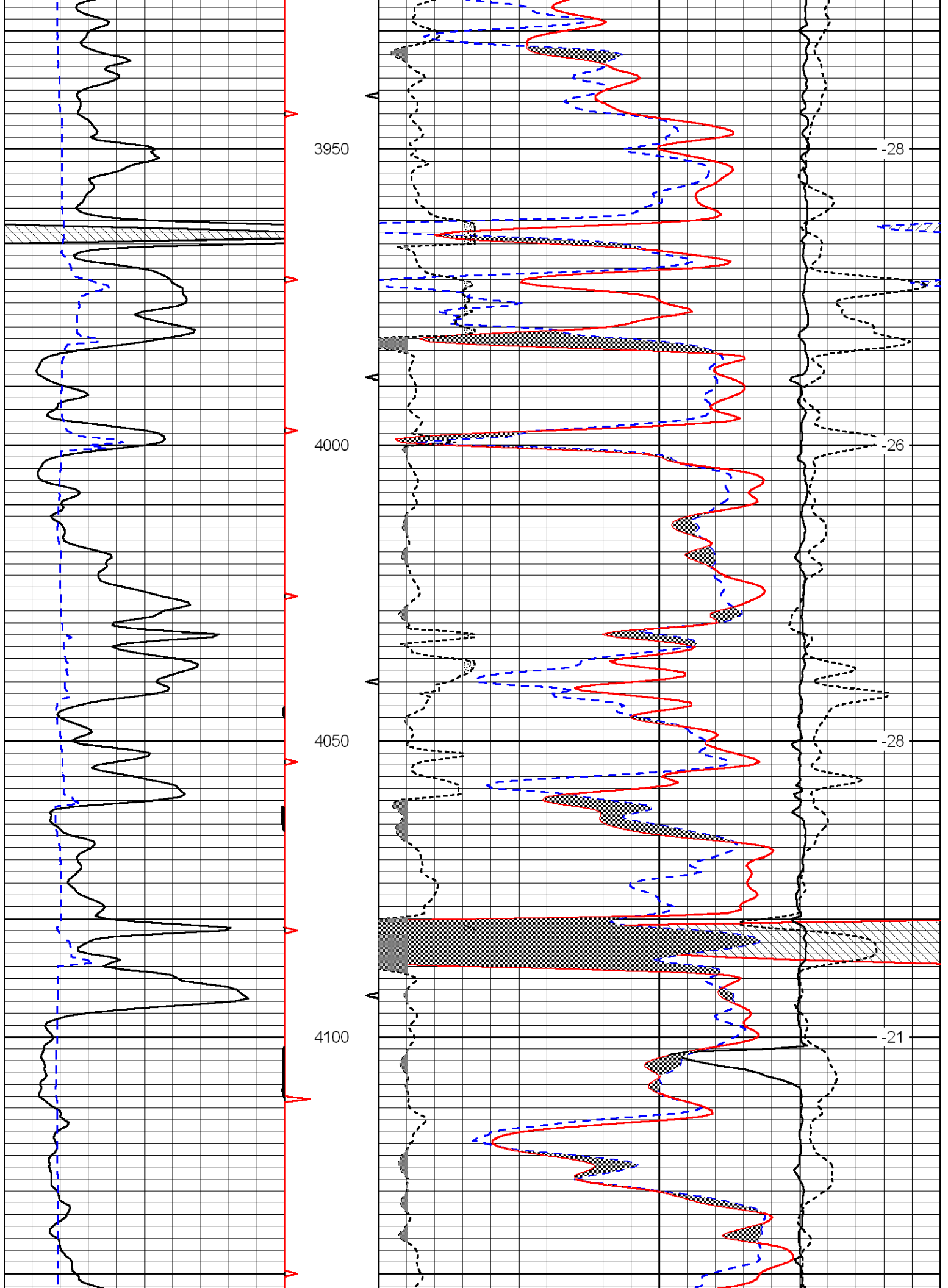


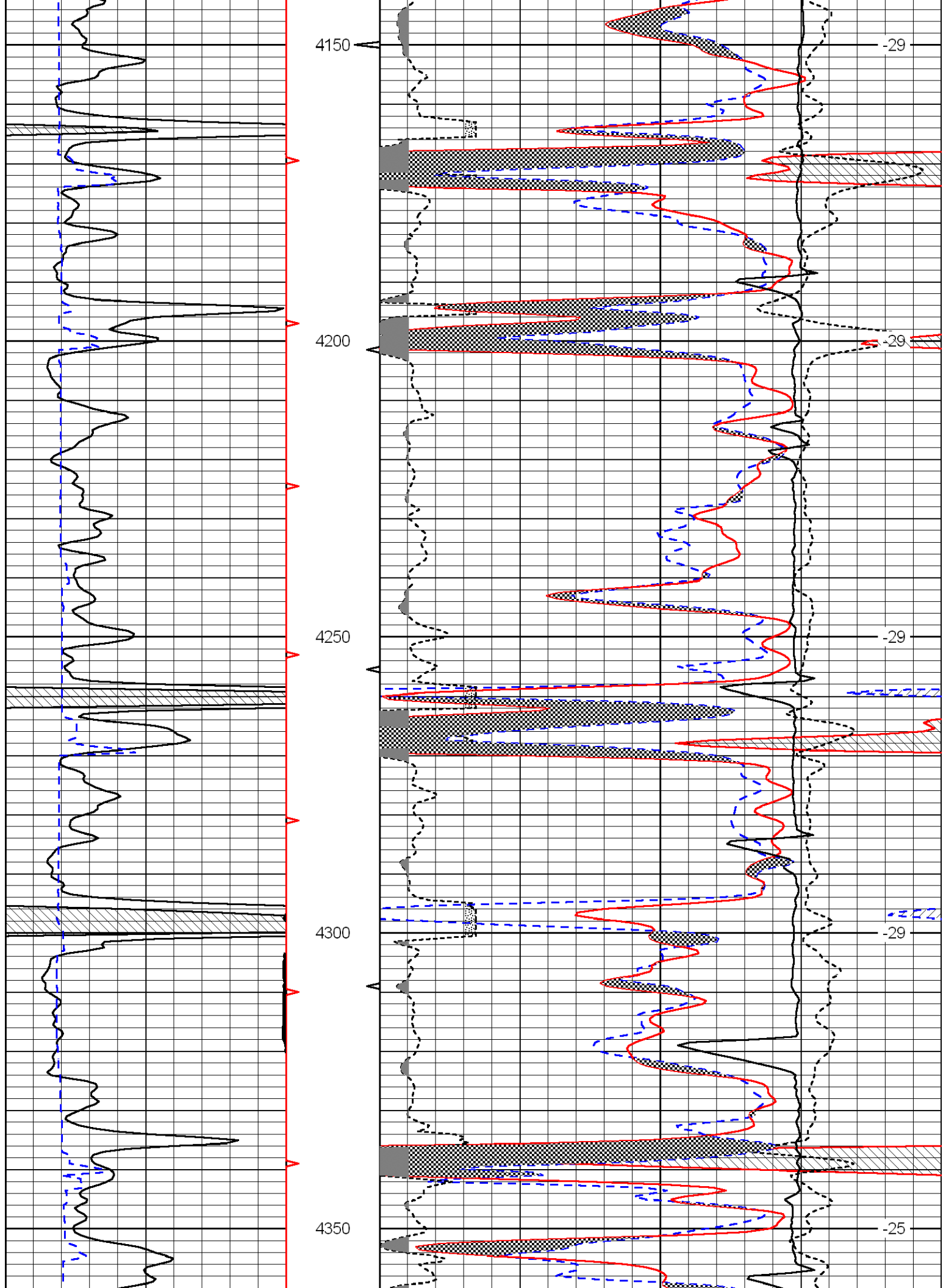


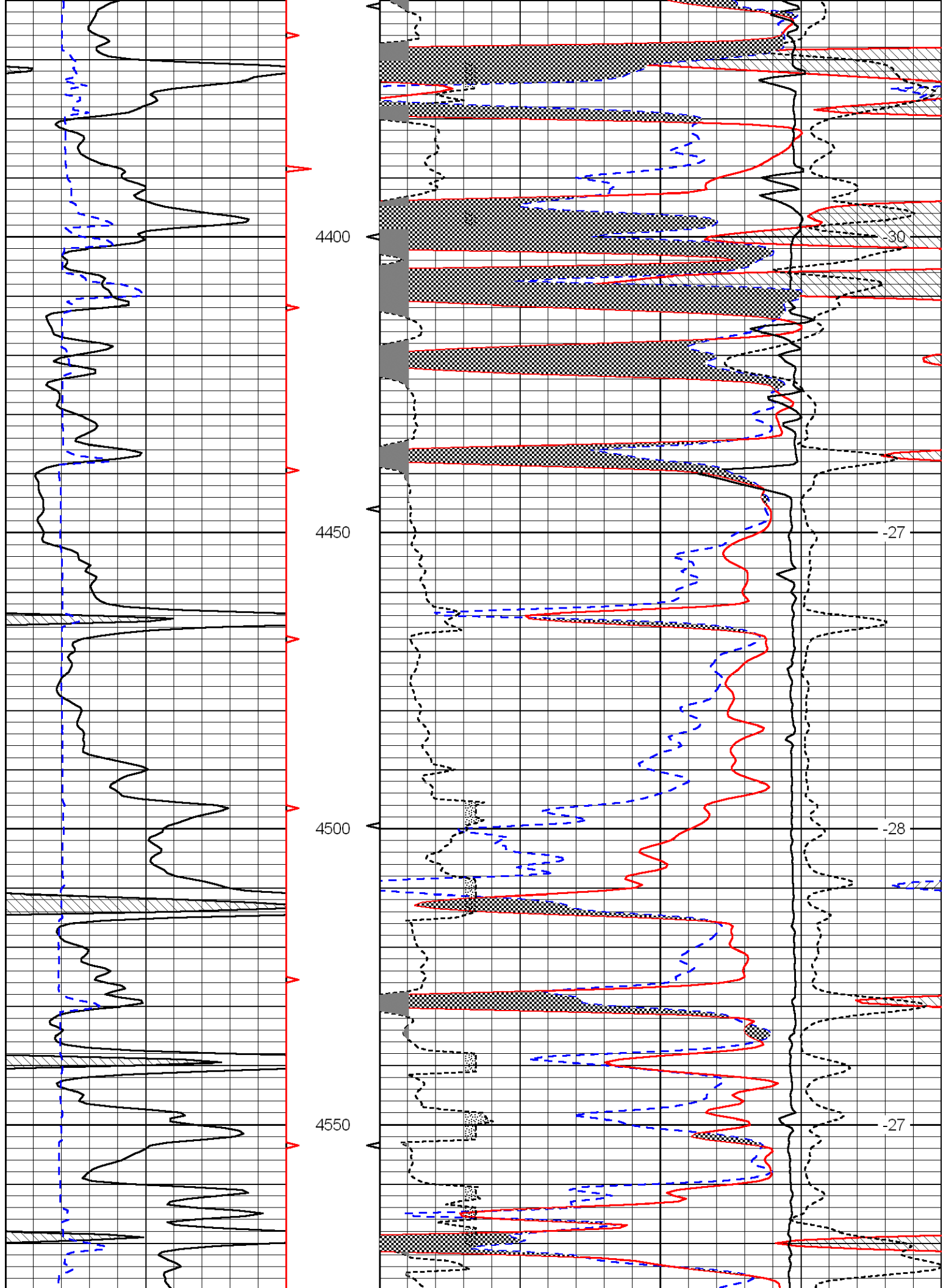
Database File: laron_mcleish-2-24hd.db
 Dataset Pathname: dil/larstck2
 Presentation Format: cndlspec
 Dataset Creation: Wed Jun 09 04:16:37 2010
 Charted by: Depth in Feet scaled 1:240

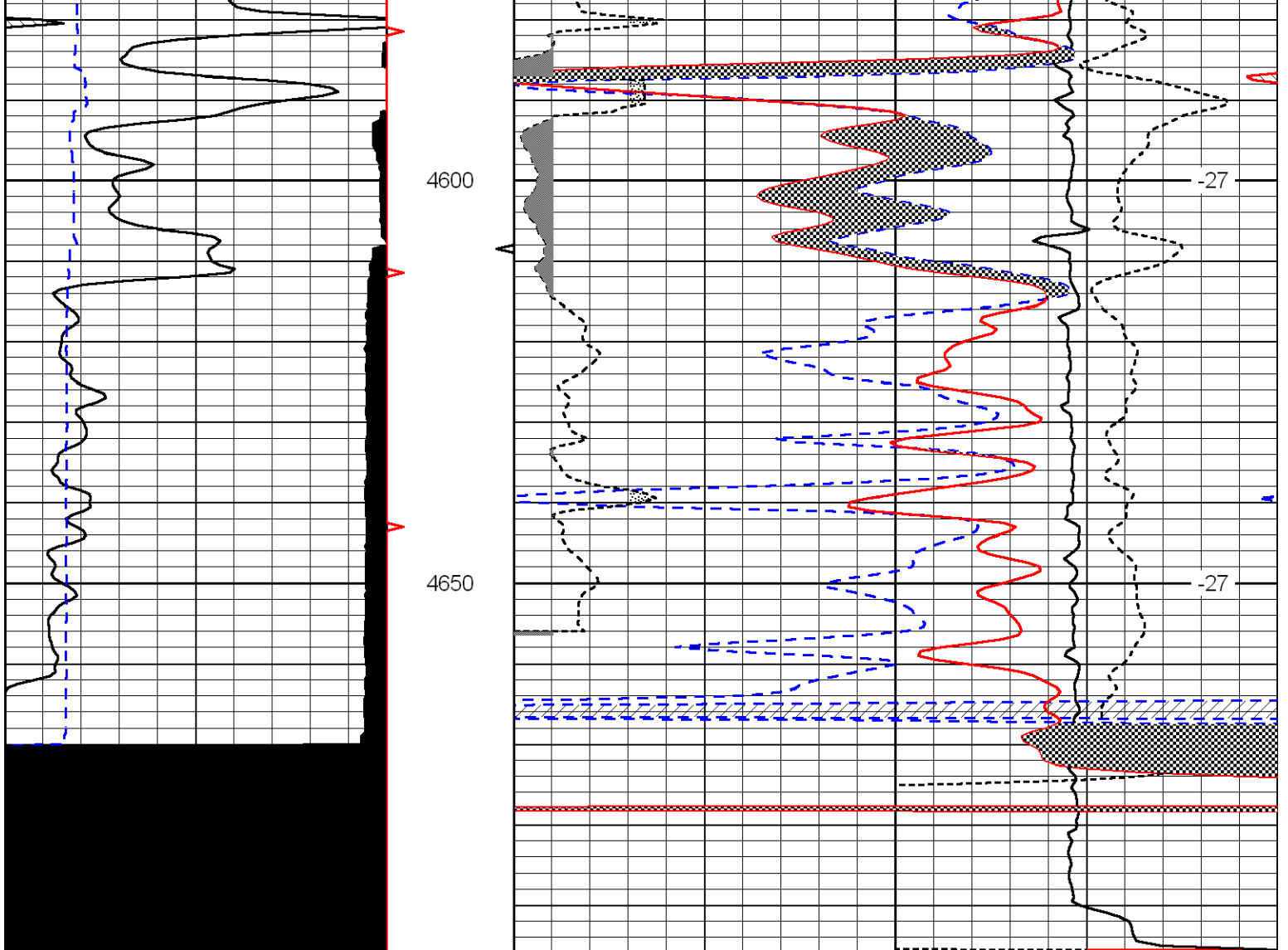












0	Gamma Ray	150
6	Caliper	16

30	CNLS			-10	
30	Compensated Density (2.71 ma)			-10	
2.625	DGA	3.425	-0.25	Correction	0.25
10000	Line Tension			0	

LSPD