



Dual Induction Log

DIGITAL LOG

(785) 625-3858

API No.	15-101-22,243-00-00	
Company	Larson Engineering, Inc.	
Well	McLeish N o. 2-24	
Field	Wildcat	
County	Lane	State
Location	2495' FSL & 841' FEL	
Sec: 24	Twp: 18S	Rge: 27W
Other Services	CNL/CDL MEL/BHCS	

Permanent Datum	Ground Level	Elevation 2645
Log Measured From	Kelly Bushing	7 Ft. Above Perm. Datum
Drilling Measured From	Frotkelly Bushing	
Date	06/09/2010	

Run Number	One
Depth Driller	4685
Depth Logger	4690
Bottom Logged Interval	4689
Top Log Interval	250
Casing Driller	8.625 @ 200
Casing Logger	242
Bit Size	7.875
Type Fluid in Hole	Chemical
Salinity, ppm CL	3.500
Density / Viscosity	8.9 46
pH / Fluid Loss	10.5 7.6
Source of Sample	Flowline
Rm @ Meas. Temp	.4 @ 76
Rmf @ Meas. Temp	.30 @ 76
Rmc @ Meas. Temp	.54 @ 76
Source of Rmf / Rmc	Charts
Rm @ BHT	.24 @ 125
Operating Rig Time	4 1/2 Hours
Max Rec. Temp. F	125
Equipment Number	17
Location	Hays
Recorded By	Mike Garrison
Witnessed By	Bob Lewelln

<<< Fold Here >>>

All interpretations are opinions based on inferences from electrical or other measurements and we cannot and do not guarantee the accuracy or correctness of any interpretation, and we shall not, except in the case of gross or willful negligence on our part, be liable or responsible for any loss, costs, damages, or expenses incurred or sustained by anyone resulting from any interpretation made by any of our officers, agents or employees. These interpretations are also subject to our general terms and conditions set out in our current Price Schedule.

Comments

Thank you for using Log-Tech, Inc.
(785) 625-3858

Ness City, West to County Line, North Into

Database File: laron_mcleish-2-24hd.db
 Dataset Pathname: dil/larstck2
 Presentation Format: dil2in
 Dataset Creation: Wed Jun 09 04:16:37 2010
 Charted by: Depth in Feet scaled 1:600

0 Gamma Ray 150
-200 SP 0

0 Shallow Resistivity 50
0 Deep Resistivity 50

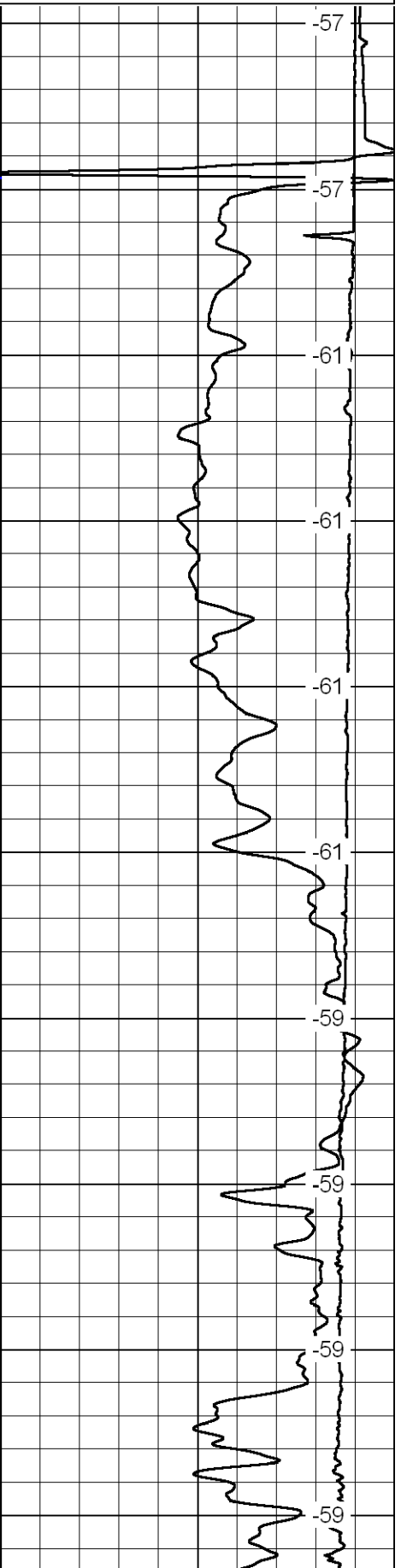
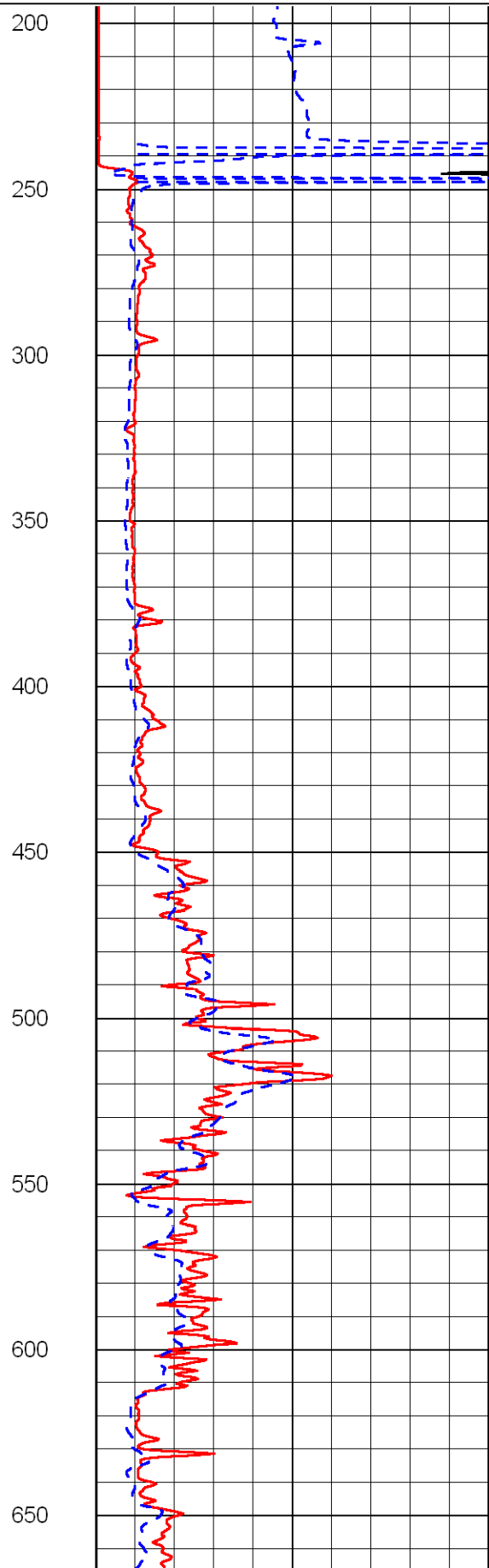
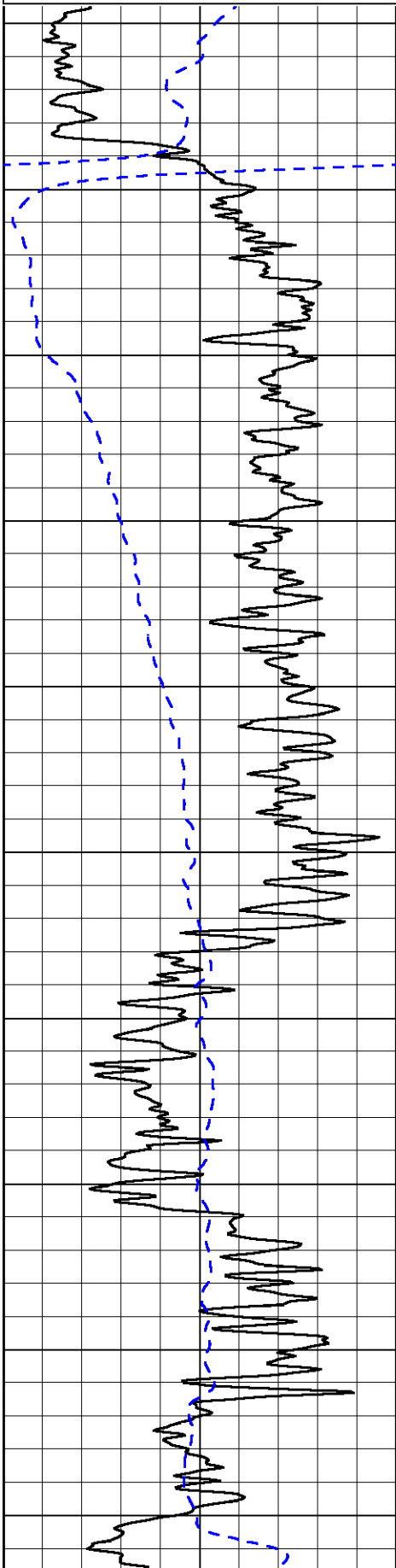
LSPD

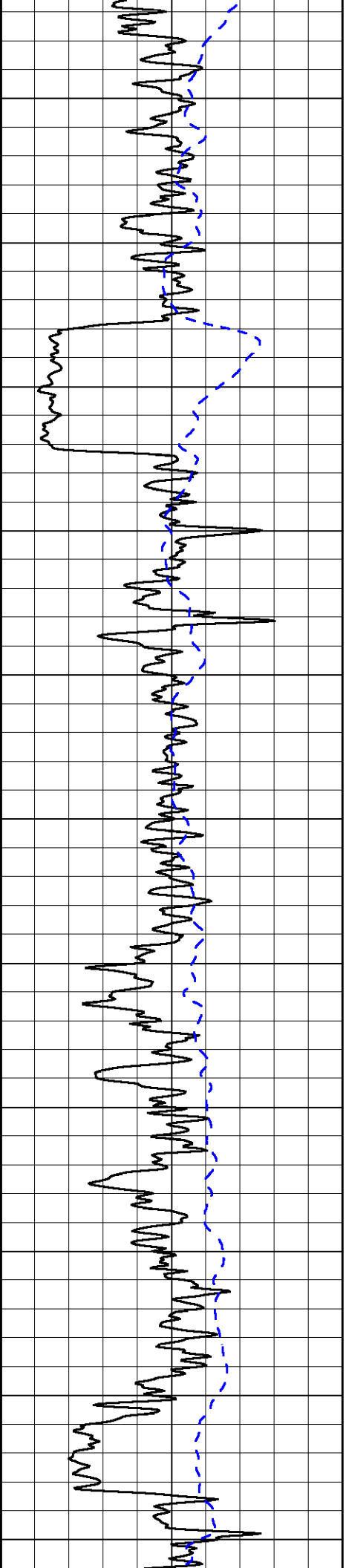
1000 Conductivity 0

15000 Line Tension 0

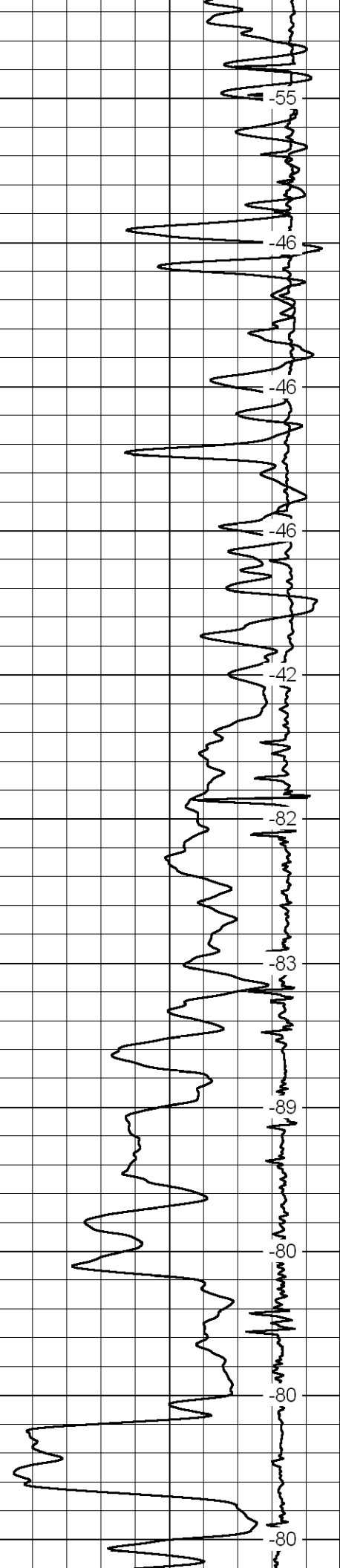
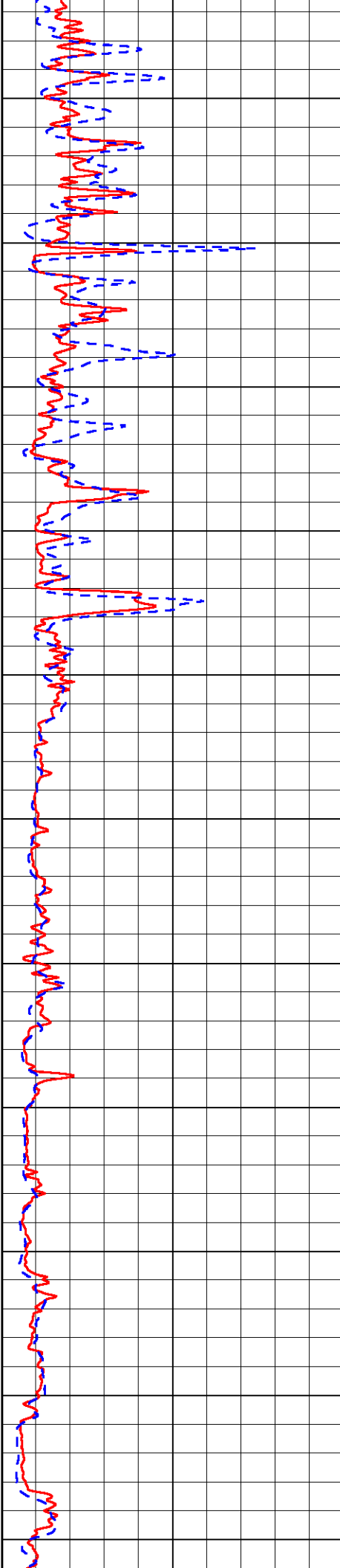
50 Shallow Resistivity 500

50 Deep Resistivity 500

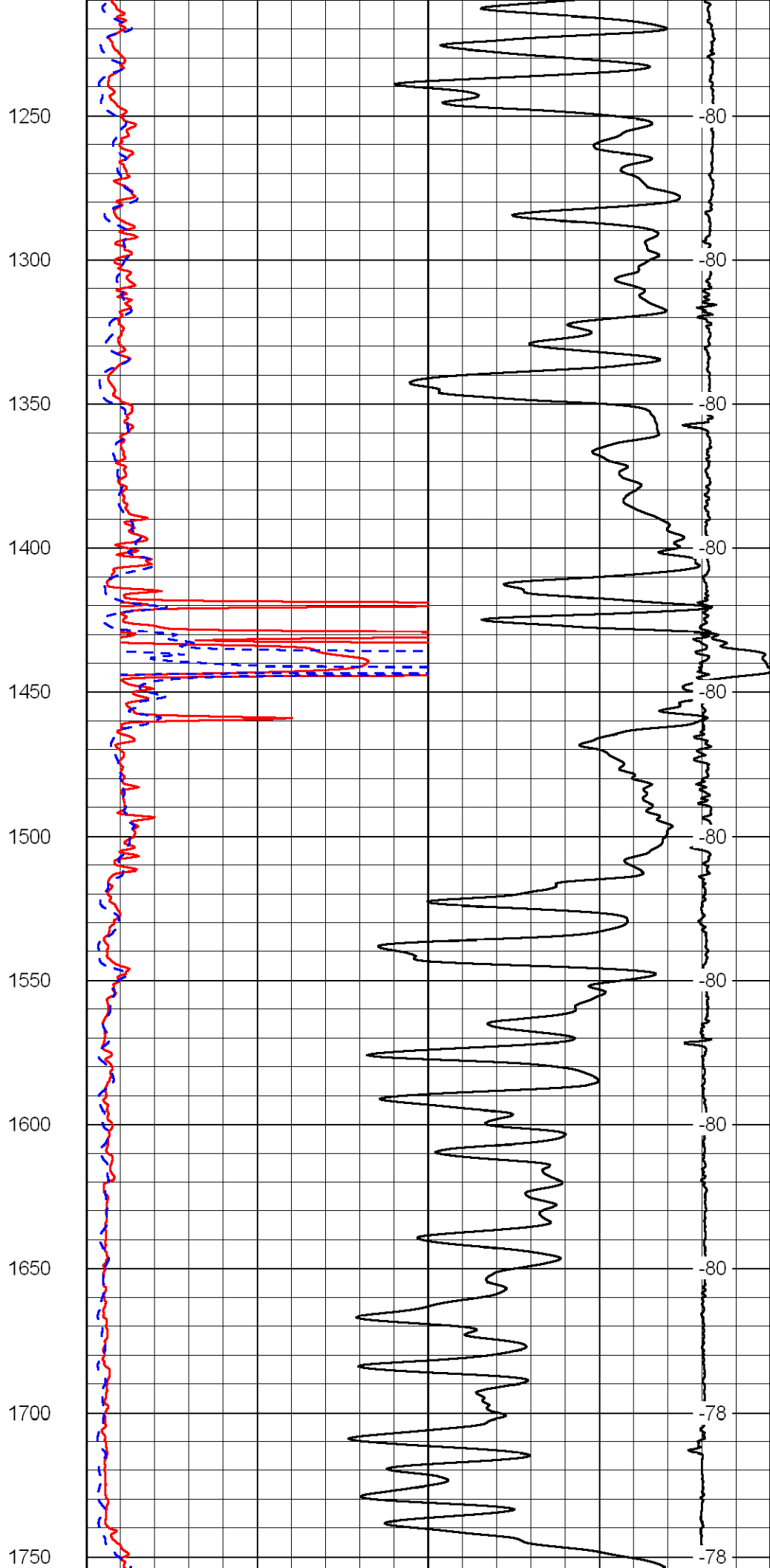
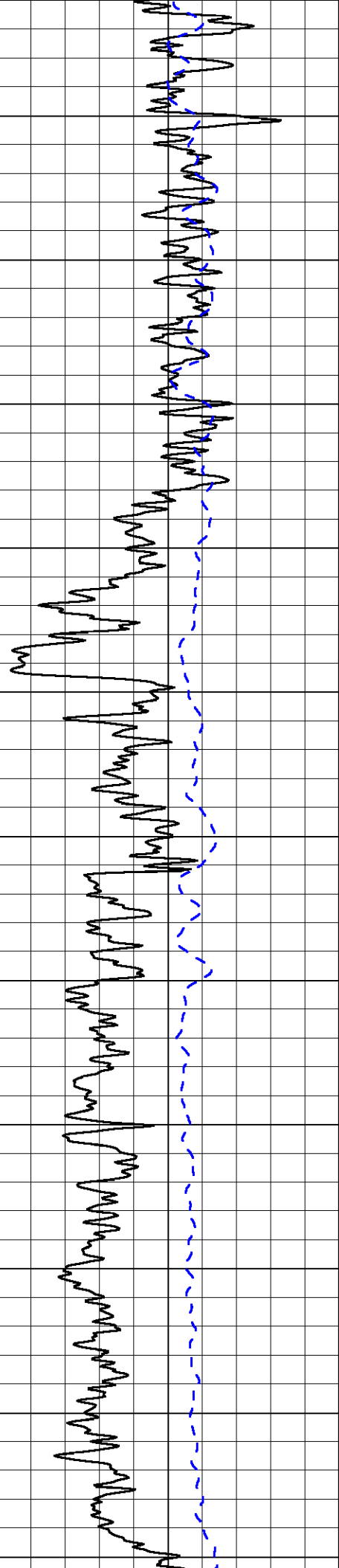


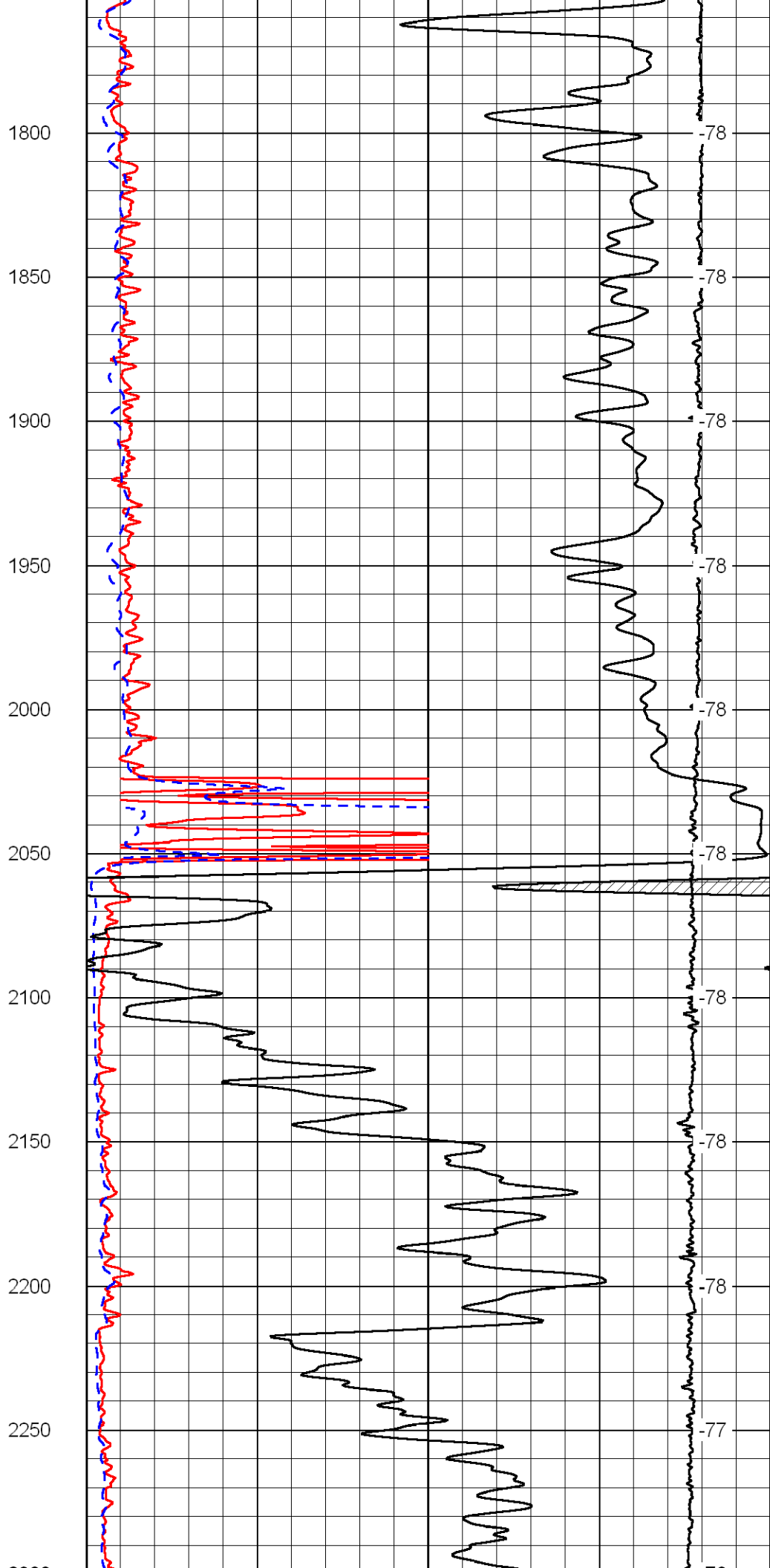
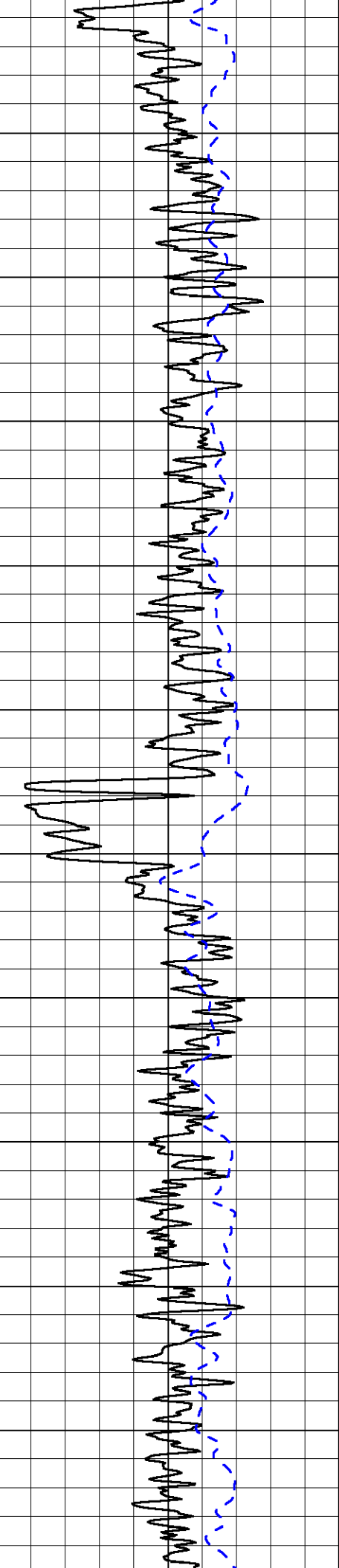


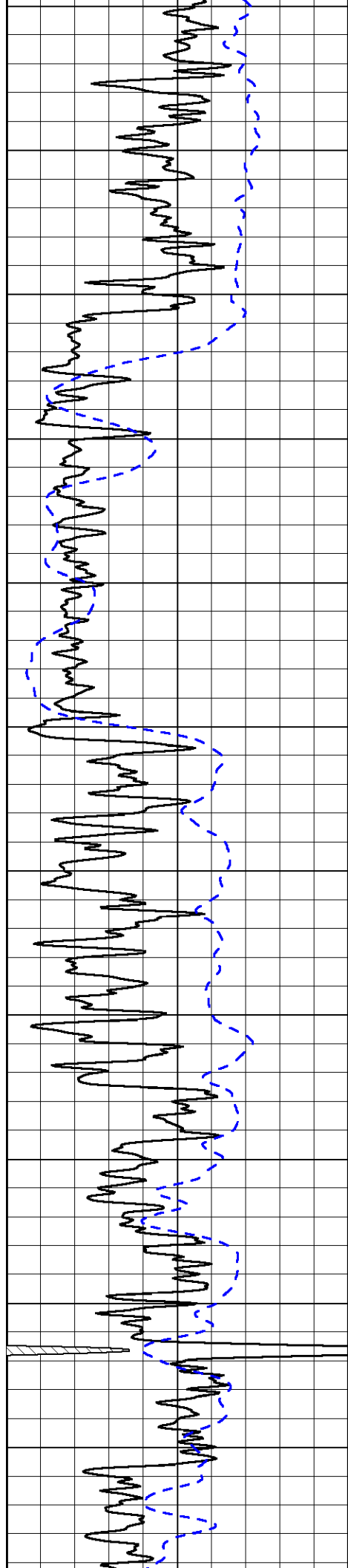
700
750
800
850
900
950
1000
1050
1100
1150
1200



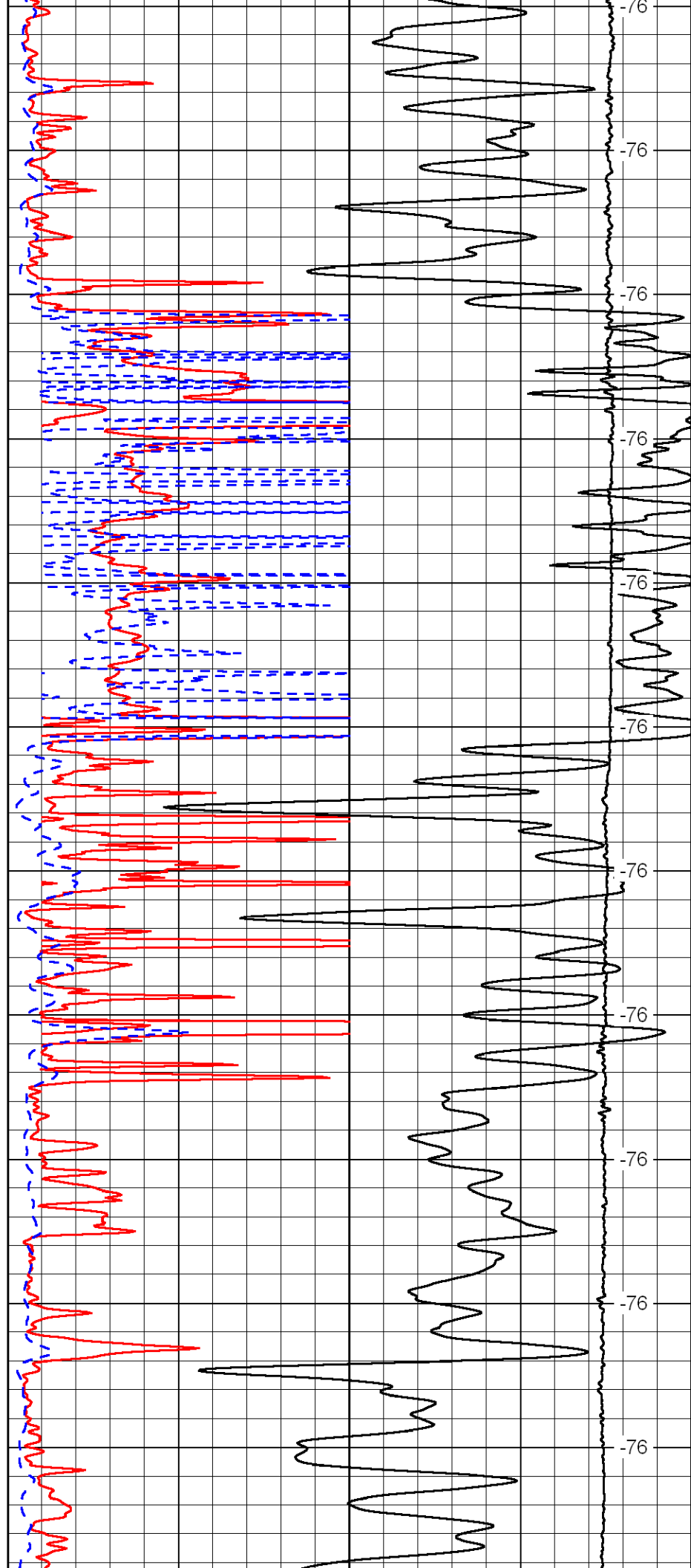
55
46
46
46
42
82
83
89
80
80
80

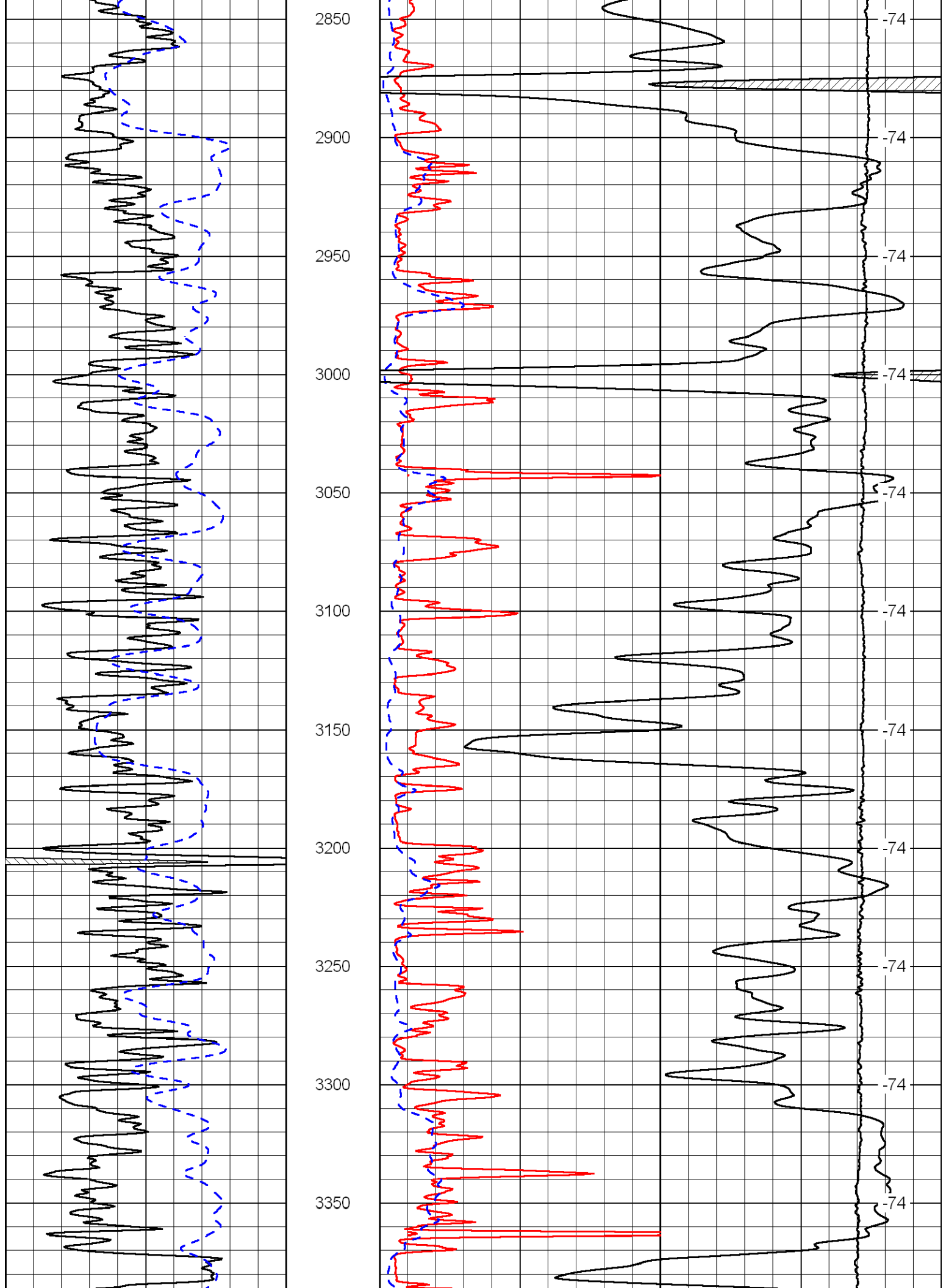


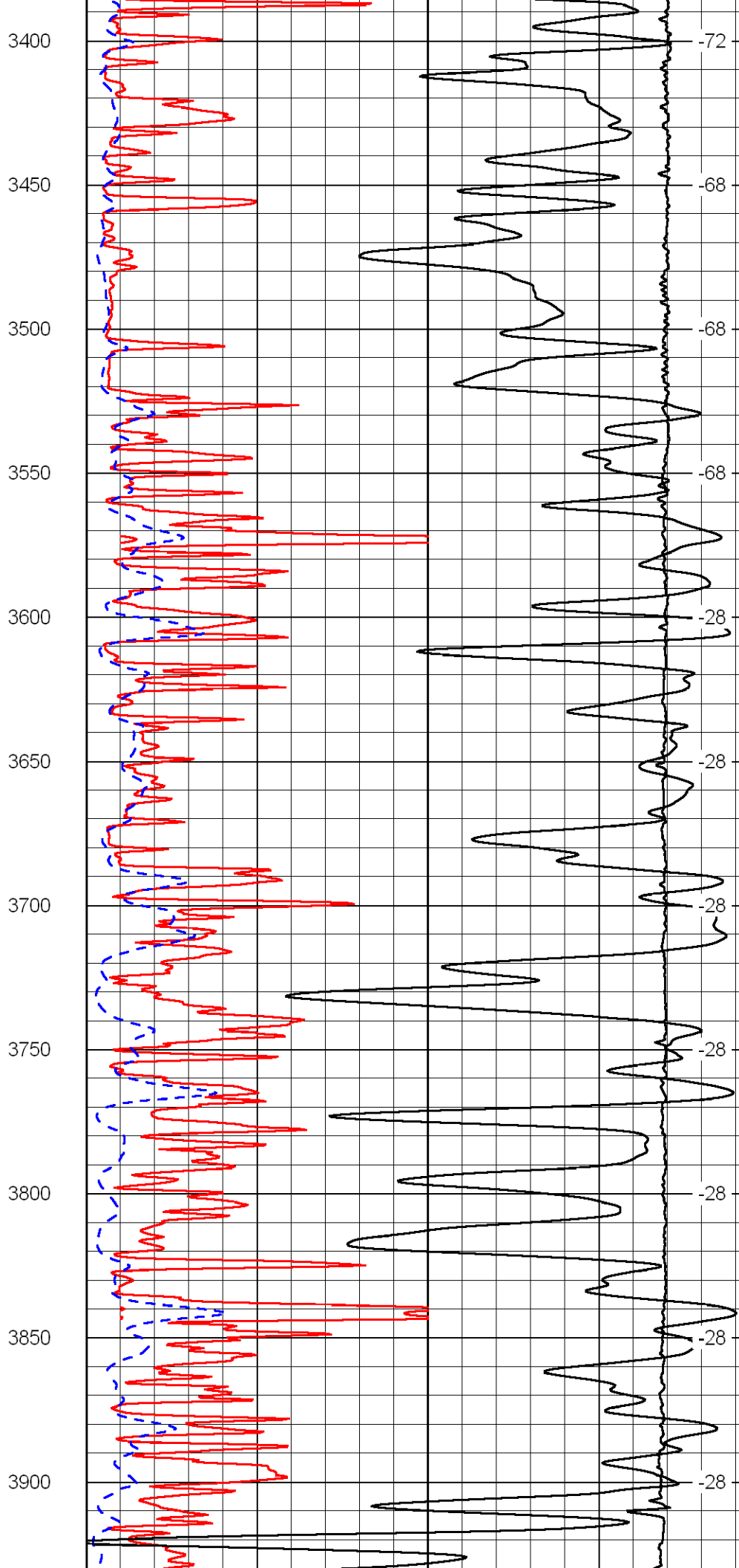
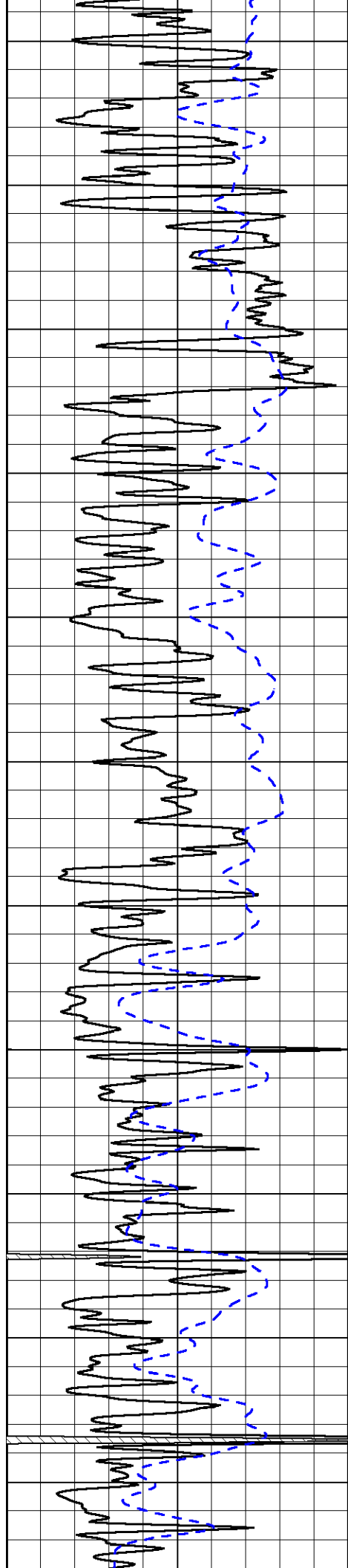


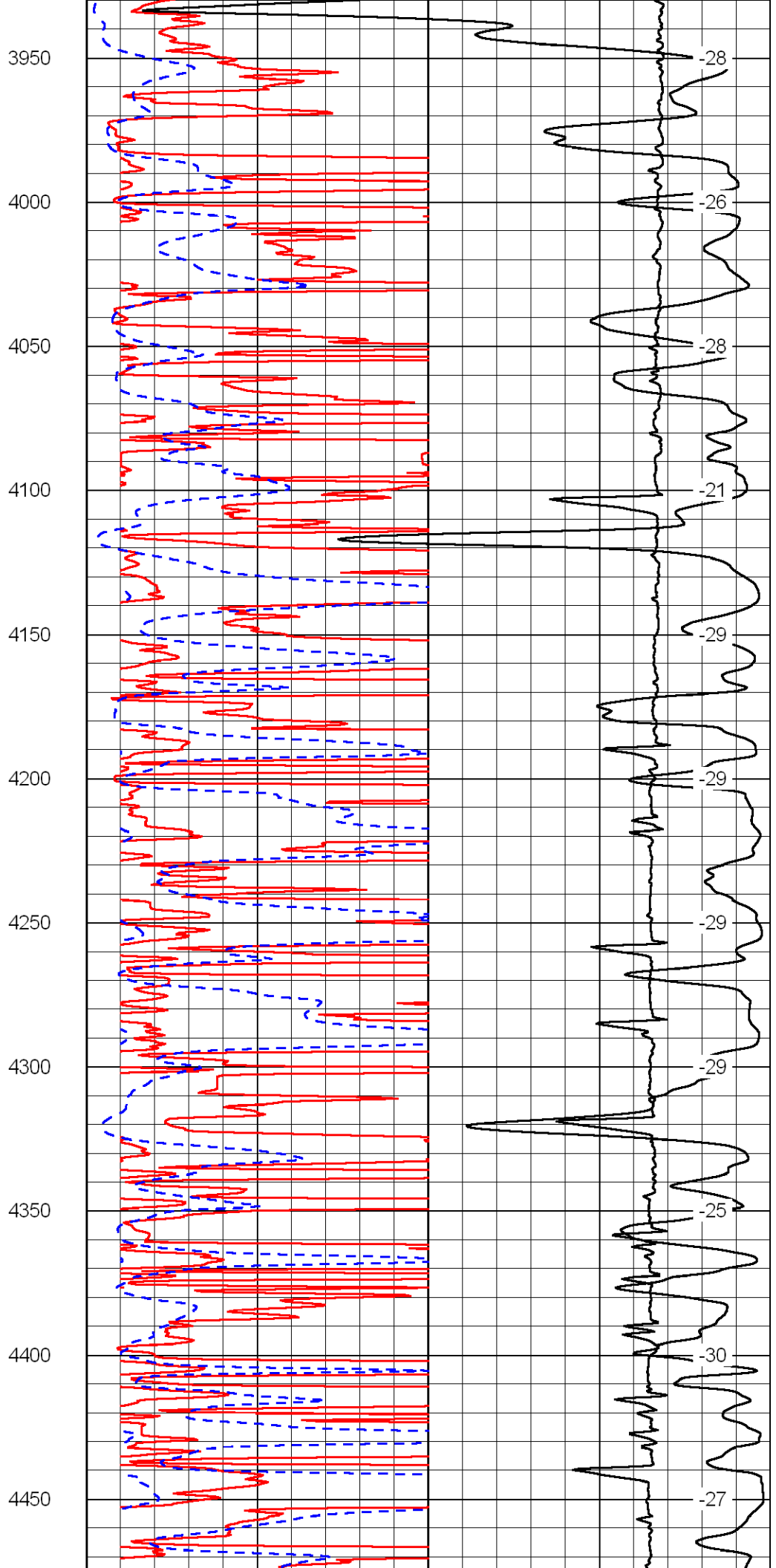
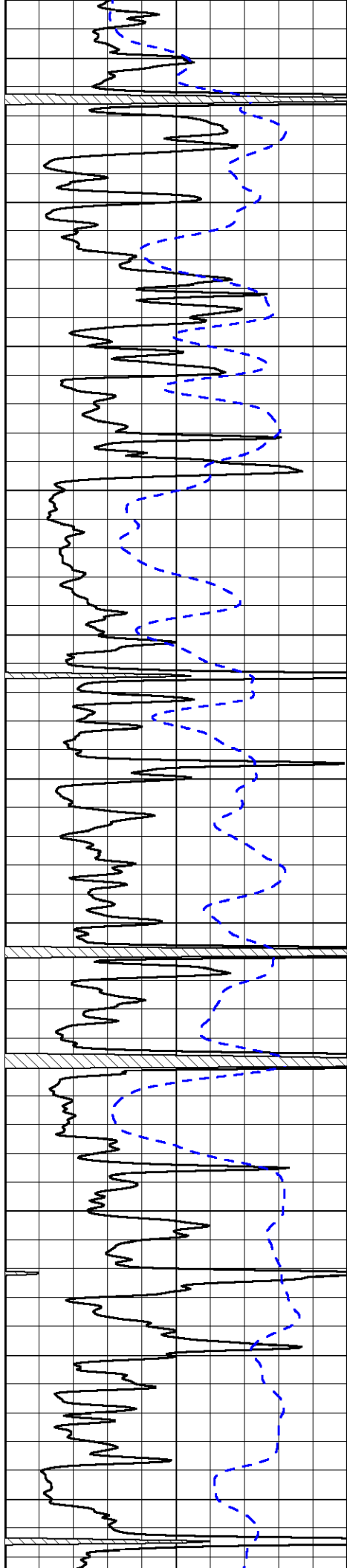


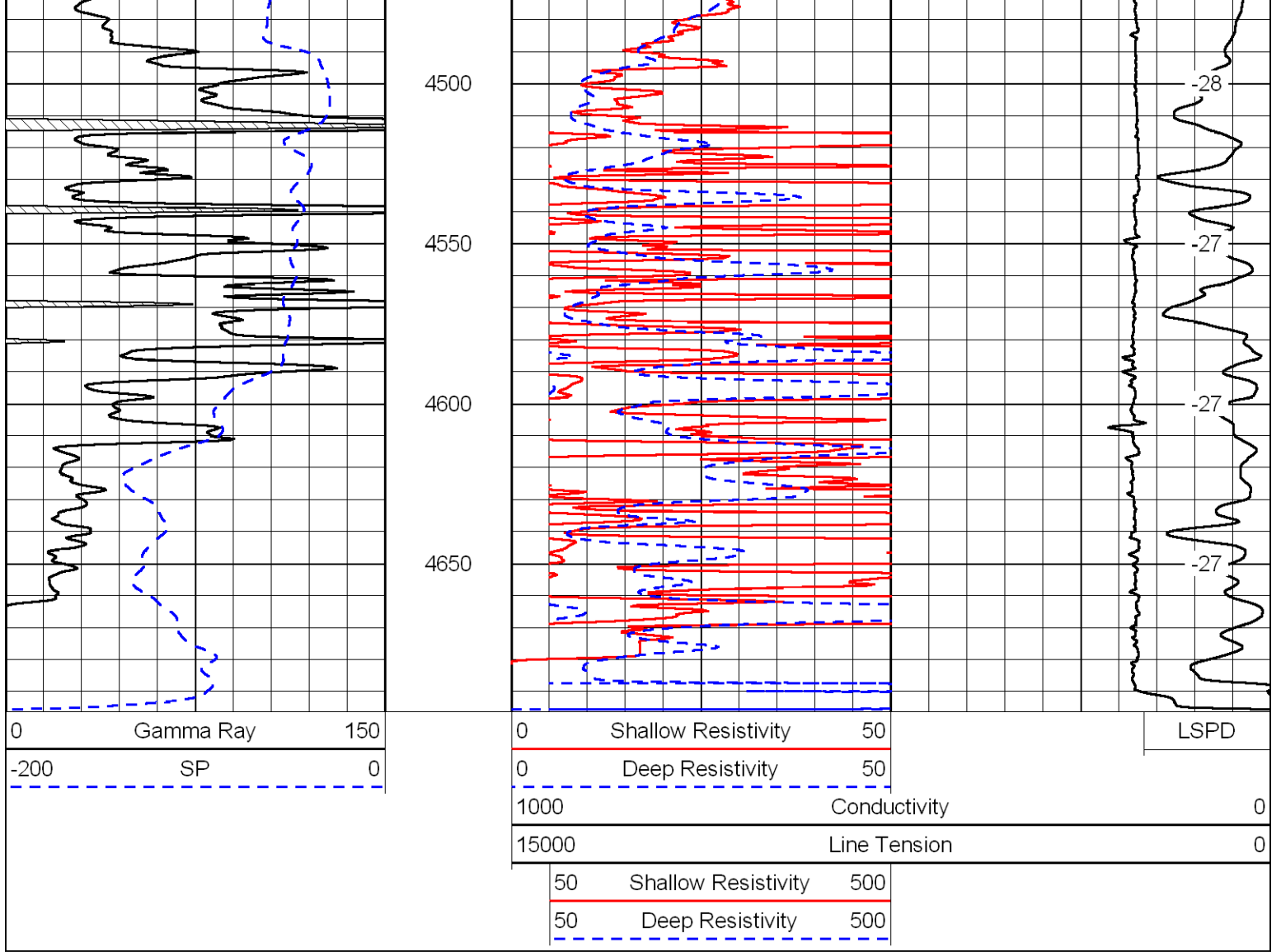
2300
2350
2400
2450
2500
2550
2600
2650
2700
2750
2800



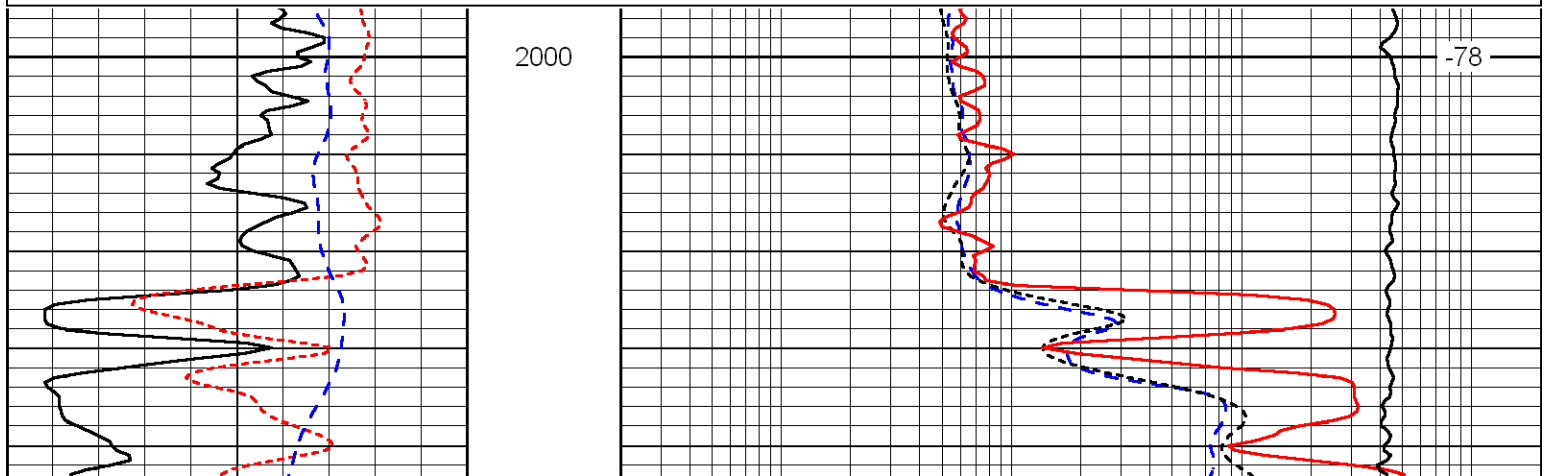
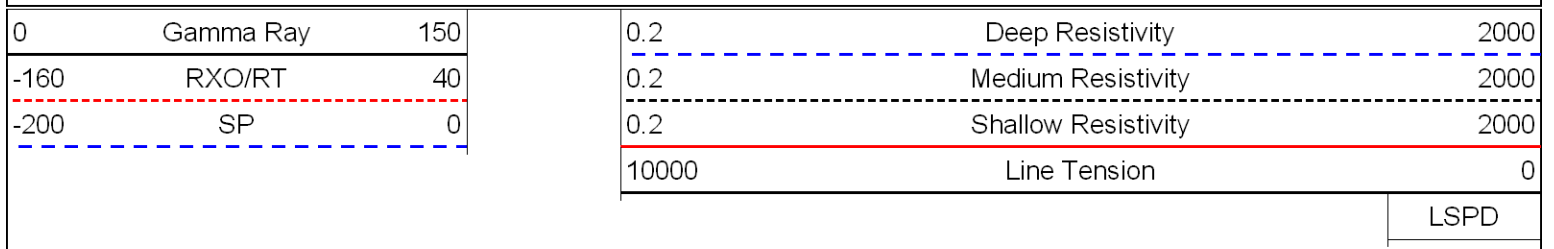


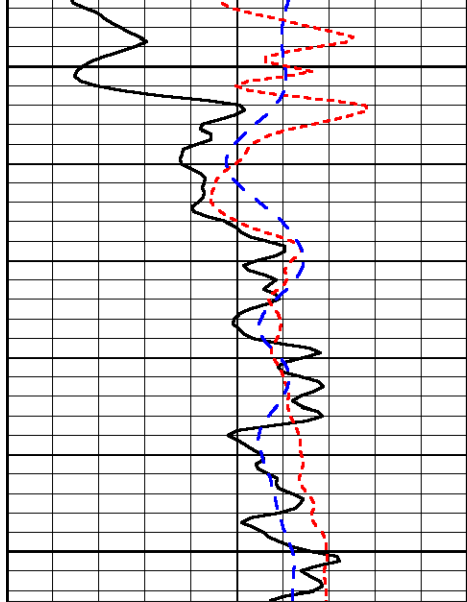






Database File: laron_mcleish-2-24hd.db
 Dataset Pathname: dil/larstck2
 Presentation Format: dil
 Dataset Creation: Wed Jun 09 04:16:37 2010
 Charted by: Depth in Feet scaled 1:240

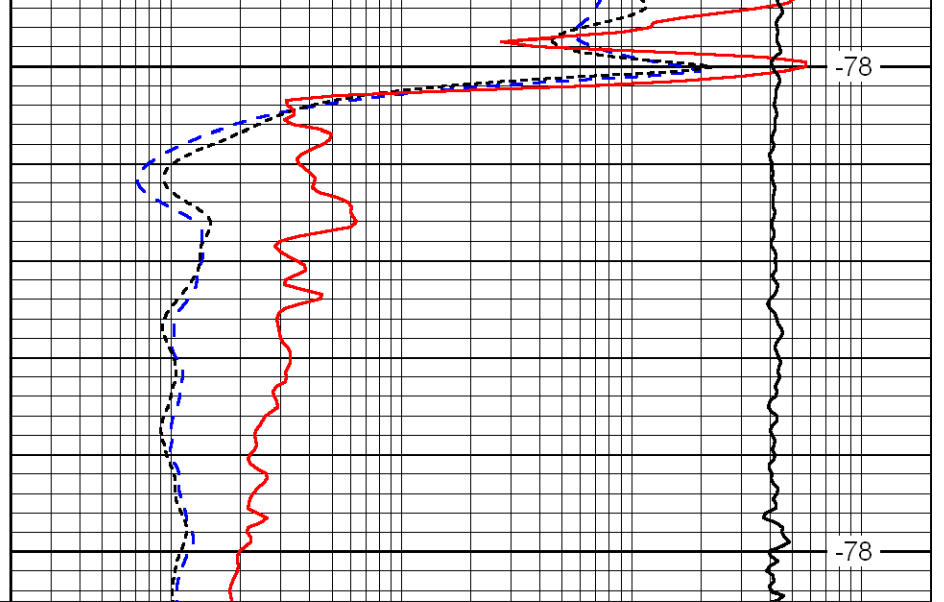




2050

2100

0	Gamma Ray	150
-160	RXO/RT	40
-200	SP	0



-78

-78

0.2	Deep Resistivity	2000
0.2	Medium Resistivity	2000
0.2	Shallow Resistivity	2000
10000	Line Tension	0

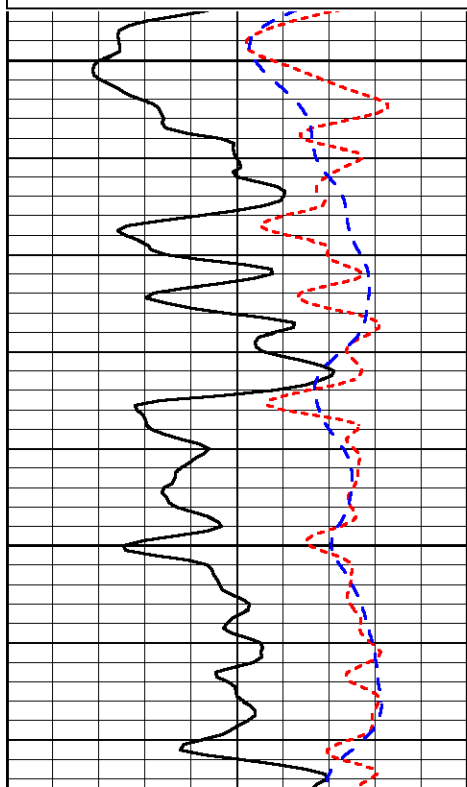
LSPD

Database File: laron_mcleish-2-24hd.db
 Dataset Pathname: dil/larstck2
 Presentation Format: dil
 Dataset Creation: Wed Jun 09 04:16:37 2010
 Charted by: Depth in Feet scaled 1:240

0	Gamma Ray	150
-160	RXO/RT	40
-200	SP	0

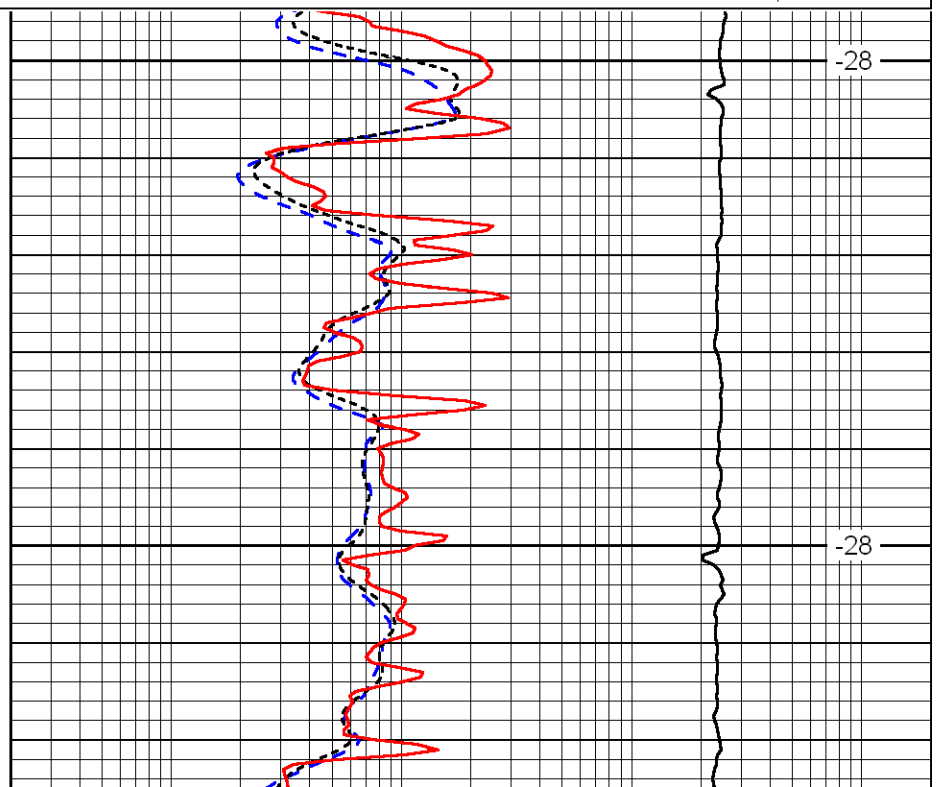
0.2	Deep Resistivity	2000
0.2	Medium Resistivity	2000
0.2	Shallow Resistivity	2000
10000	Line Tension	0

LSPD



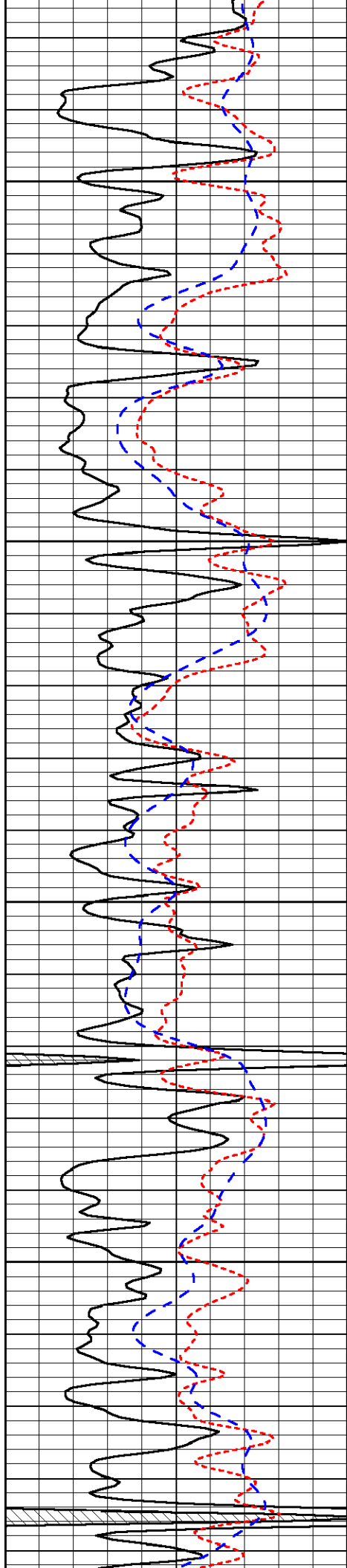
3600

3650



-28

-28

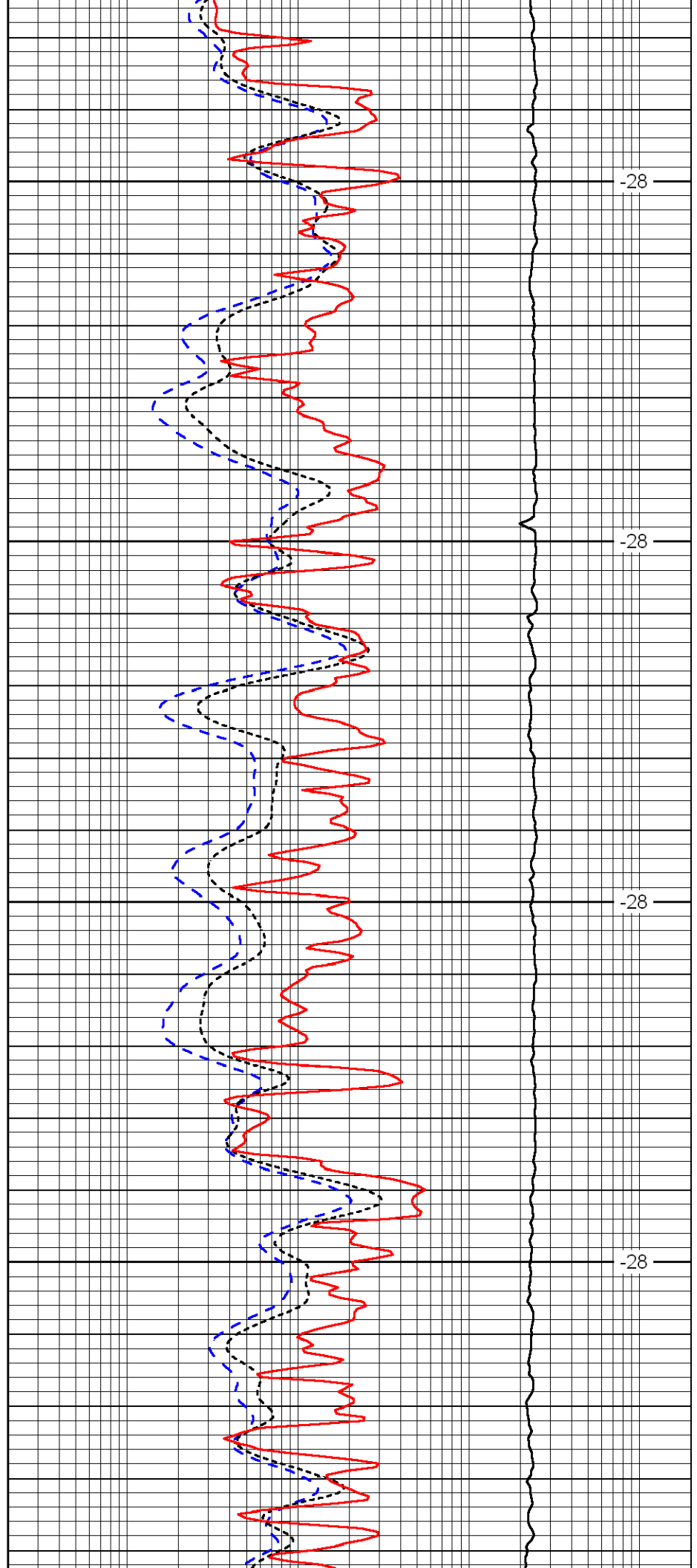


3700

3750

3800

3850

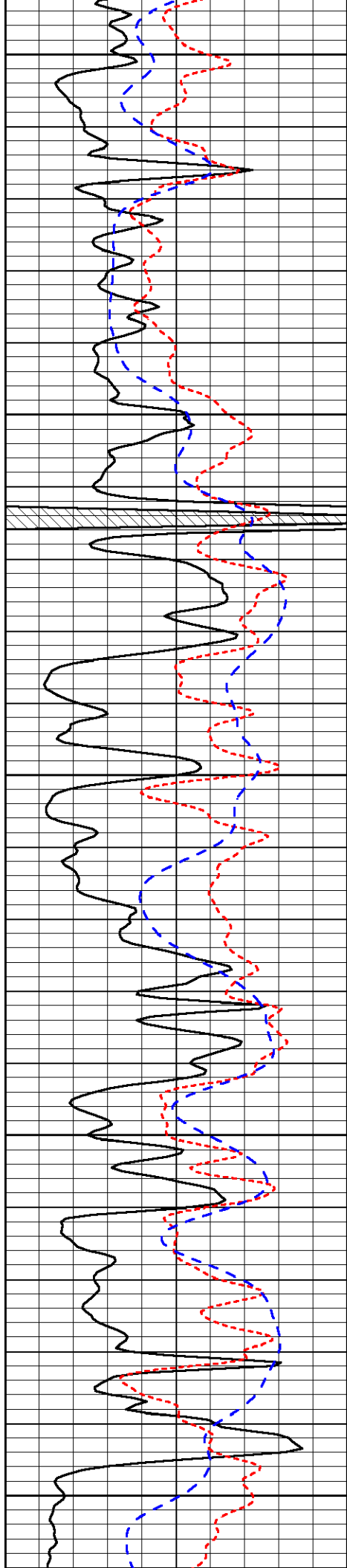


-28

-28

-28

-28



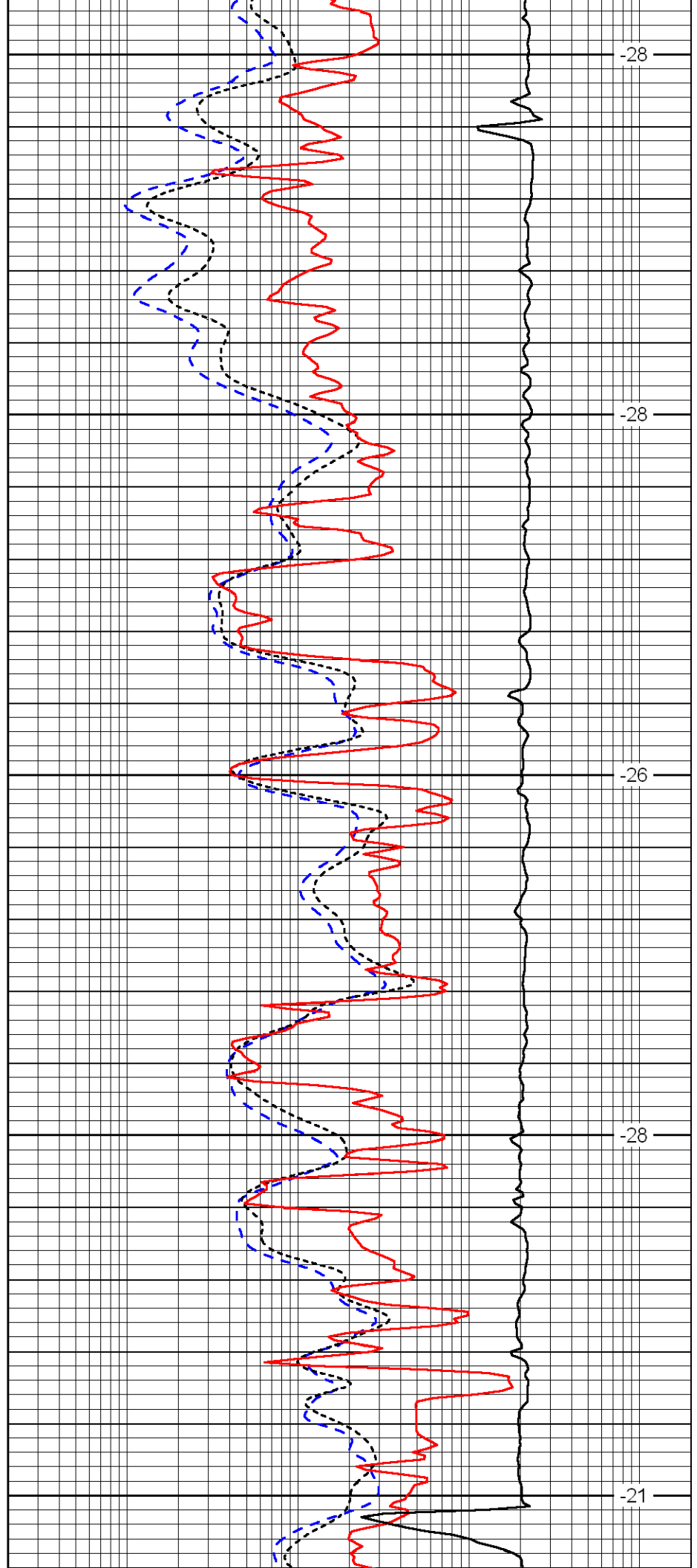
3900

3950

4000

4050

4100



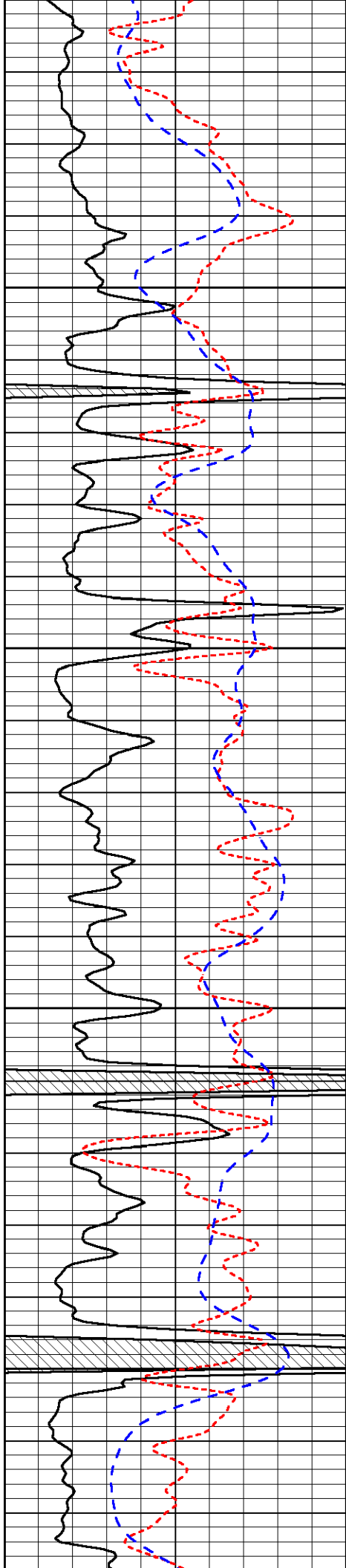
-28

-28

-26

-28

-21

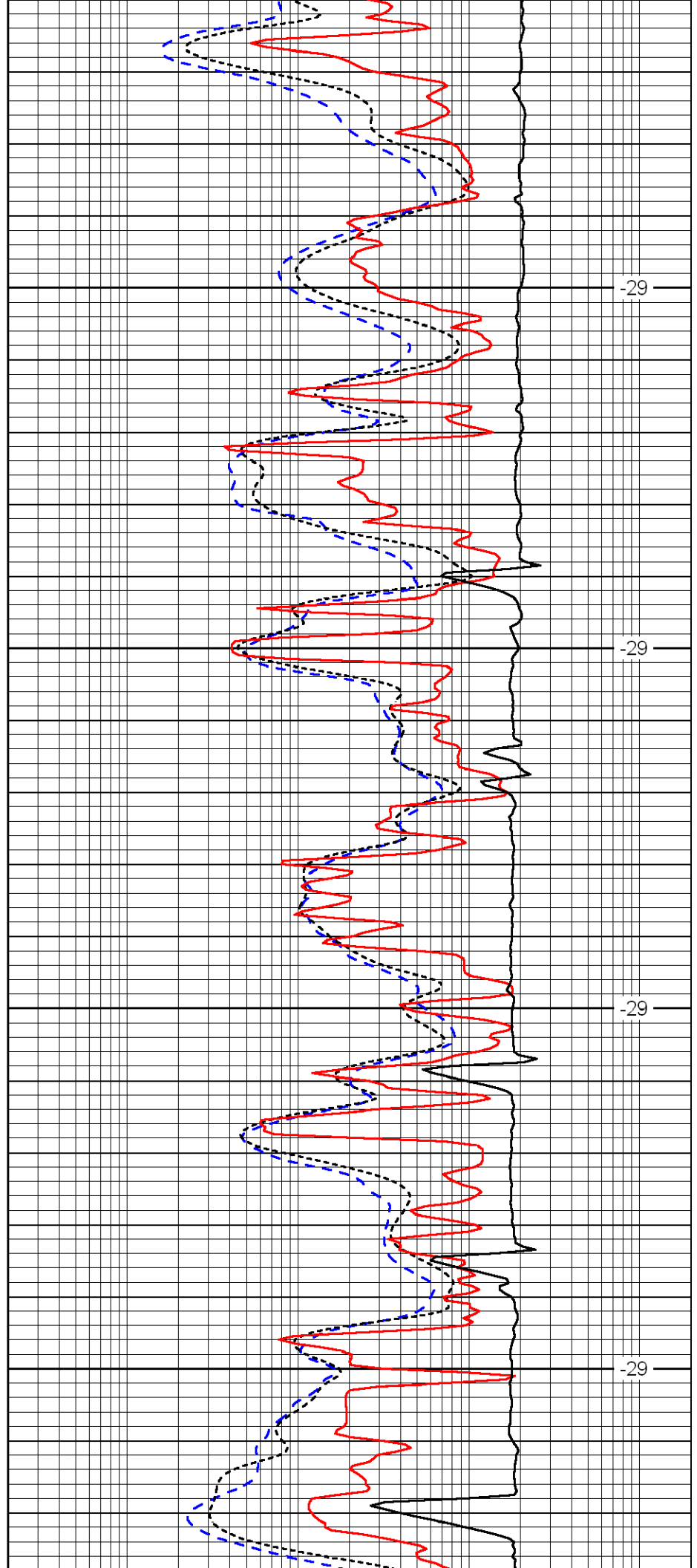


4150

4200

4250

4300

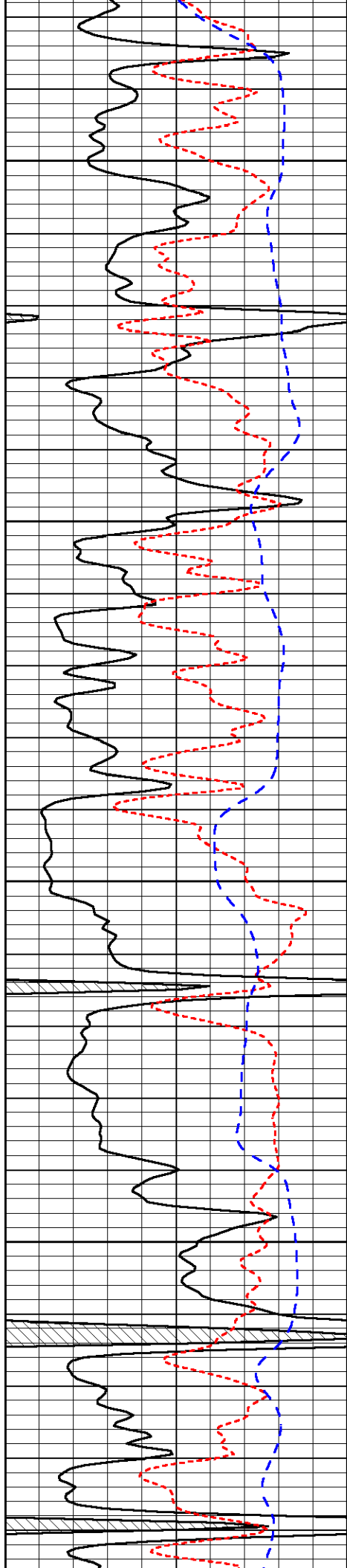


-29

-29

-29

-29

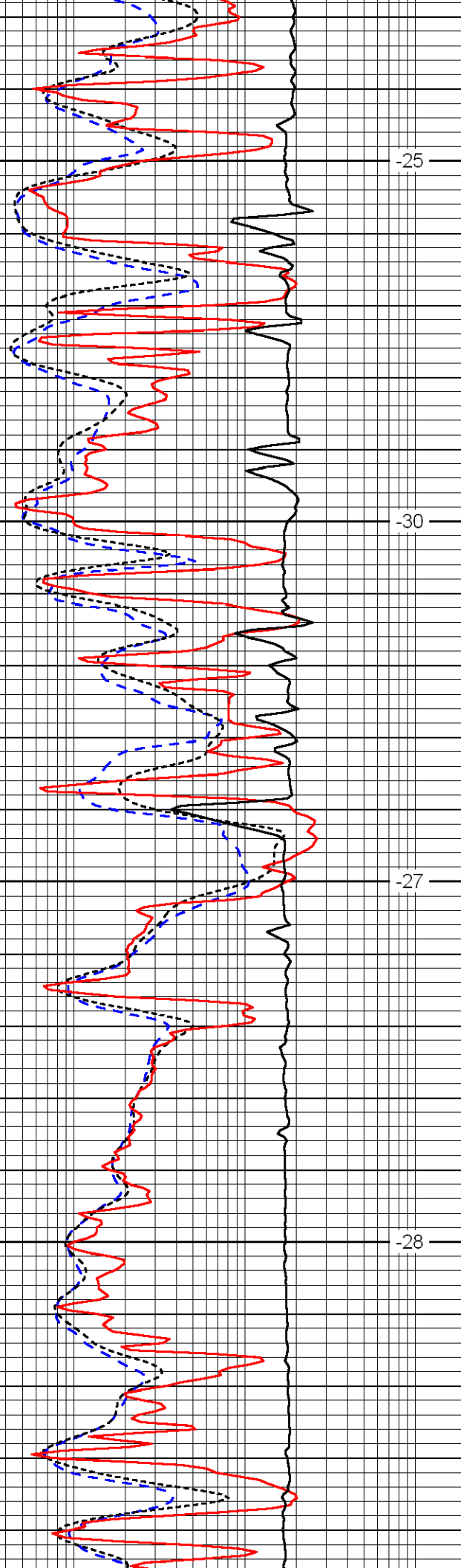


4350

4400

4450

4500

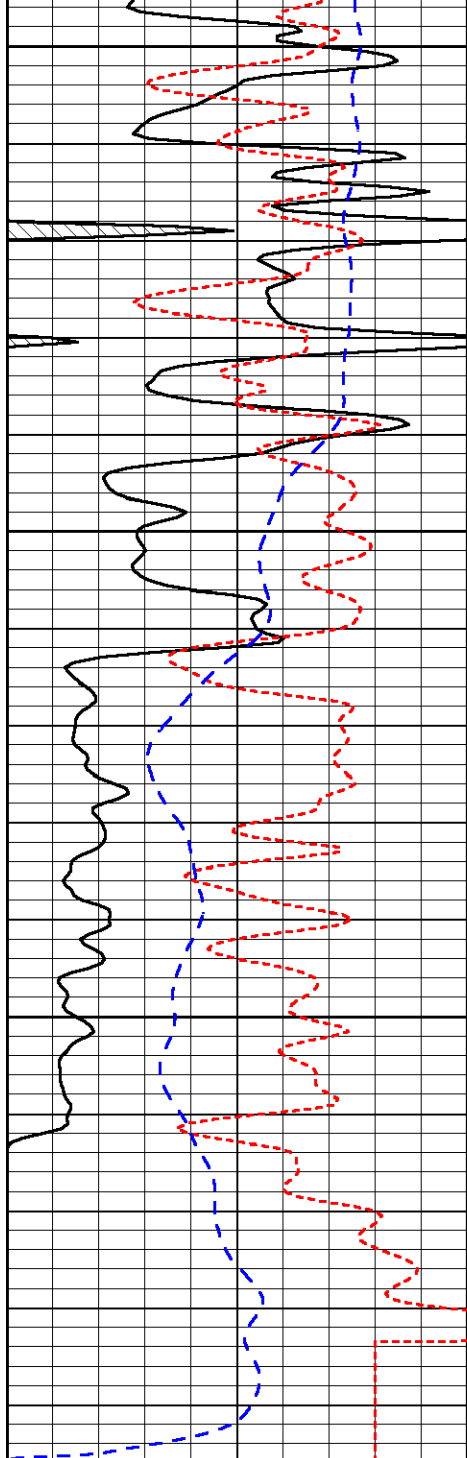


-25

-30

-27

-28

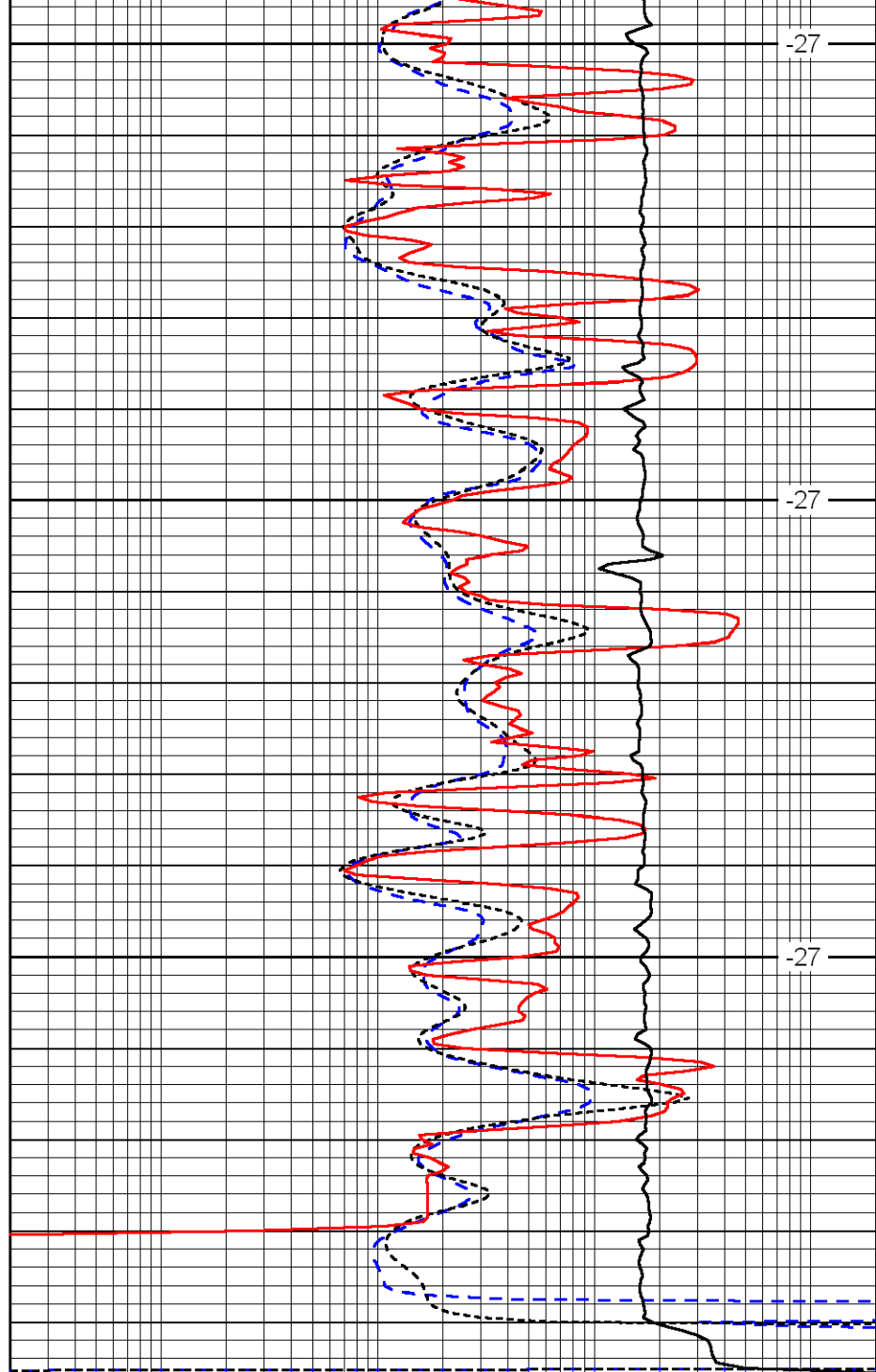


4550

4600

4650

0	Gamma Ray	150
-160	RXO/RT	40
-200	SP	0



-27

-27

-27

0.2	Deep Resistivity	2000
0.2	Medium Resistivity	2000
0.2	Shallow Resistivity	2000
10000	Line Tension	0

LSPD