



Pioneer Energy Services

Dual Induction Log

15-007-23907-00-00

Company	Chieftain Oil Company, Inc		Other Services CNL/CDL
Well	Palmer No. 3		
Field	Little Sandy Creek		Elevation K.B. 1467 D.F. 1454 G.L. 1454
County	Barber	State	
Location	SW - NE - SW - SW 688' FSL & 710' FWL		
Sec:	34	Twp:	32 S Rge: 10 W
Permanent Datum	Ground Level	Elevation	1454
Log Measured From	Kelly Bushing	13 Ft. Above Perm. Datum	
Drilling Measured From	Kelly Bushing		

Date	8/18/2012
Run Number	One
Depth Driller	5000
Depth Logger	5004
Bottom Logged Interval	5003
Top Log Interval	300
Casing Driller	8.625 @ 311
Casing Logger	308
Bit Size	7.875
Type Fluid in Hole	Chemical
Salinity, ppm CL	8000
Density / Viscosity	9.3 55
pH / Fluid Loss	10.5 8.0
Source of Sample	Flowline
Rm @ Meas. Temp	0.55 @ 69
Rmf @ Meas. Temp	0.41 @ 69
Rmc @ Meas. Temp	0.74 @ 69
Source of Rmf / Rmc	Charts
Rm @ BHT	0.30 @ 126
Operating Rig Time	2-1/2 Hours
Max Rec. Temp. F	126
Equipment Number	17
Location	Hays
Recorded By	B. Becker
Witnessed By	Arden Ratzlaf

<<< Fold Here >>>

All interpretations are opinions based on inferences from electrical or other measurements and we cannot and do not guarantee the accuracy or correctness of any interpretation, and we shall not, except in the case of gross or willful negligence on our part, be liable or responsible for any loss, costs, damages, or expenses incurred or sustained by anyone resulting from any interpretation made by any of our officers, agents or employees. These interpretations are also subject to our general terms and conditions set out in our current Price Schedule.

Comments

Thank you for using Pioneer Energy Services
www.pioneer.com
 785 625 3858

 Sharon, Ks; 2-1/2 South on Tri-City Blacktop;
 1/8 Southwest; North along pond damn to location

Database File: chieftain_palmer3hd.db
 Dataset Pathname: DIL/chfnstk
 Presentation Format: dil2in
 Dataset Creation: Sat Aug 18 23:19:49 2012
 Charted by: Depth in Feet scaled 1:600

0 Gamma Ray 150
 -200 SP (mV) 0

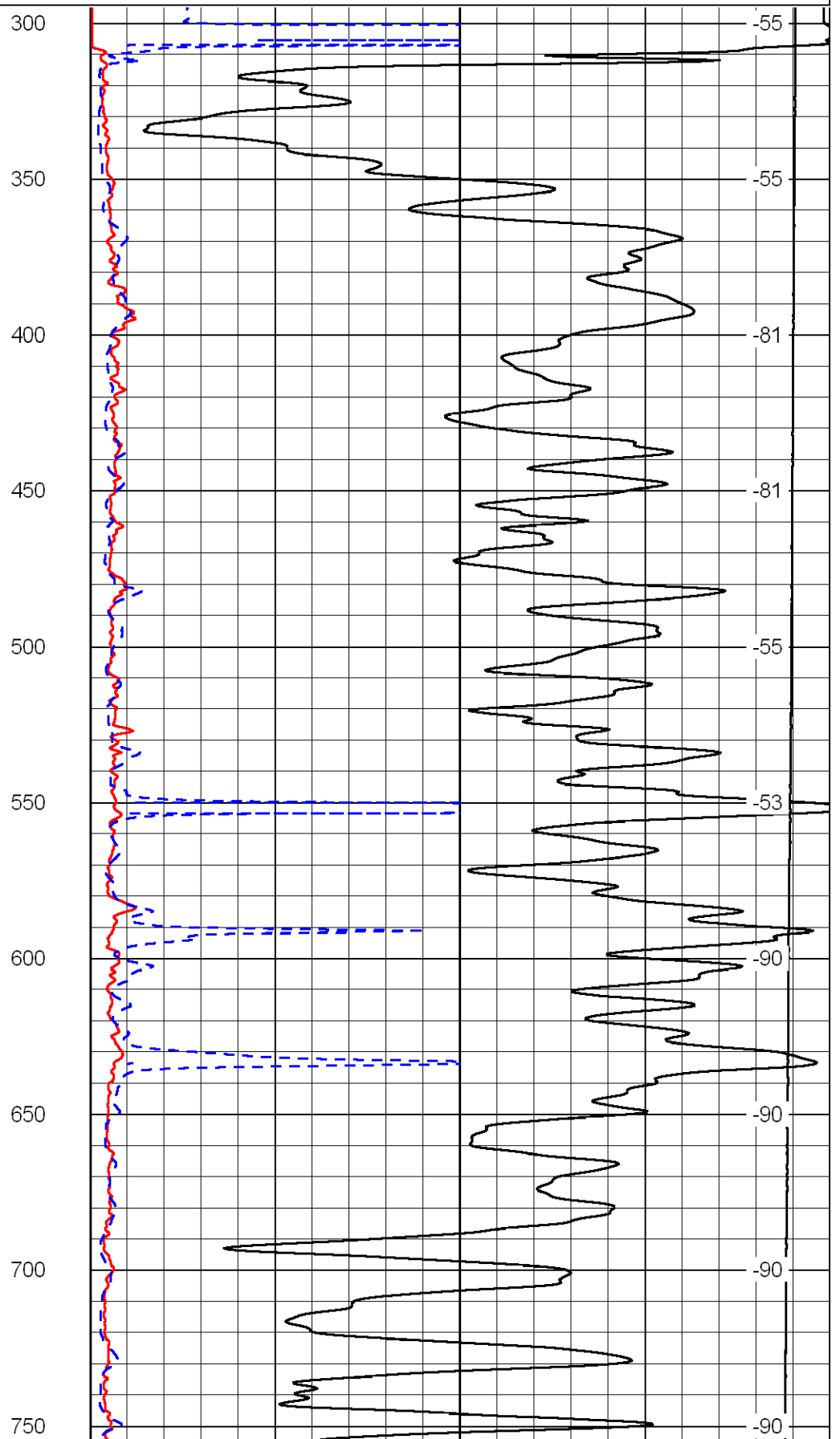
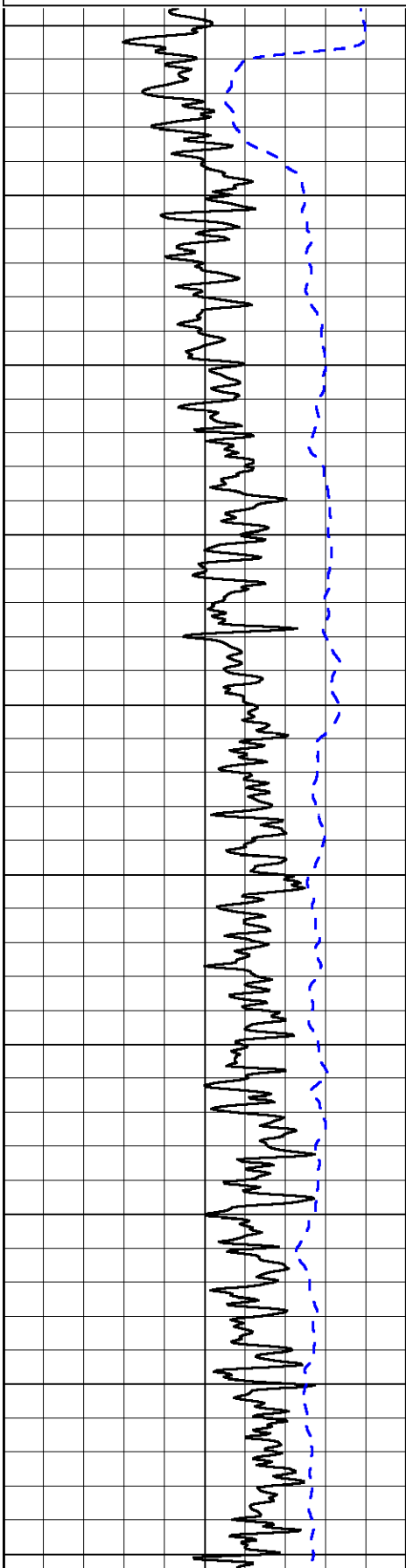
0 Shallow Resistivity (Ohm-m) 50
 0 Deep Resistivity (Ohm-m) 50

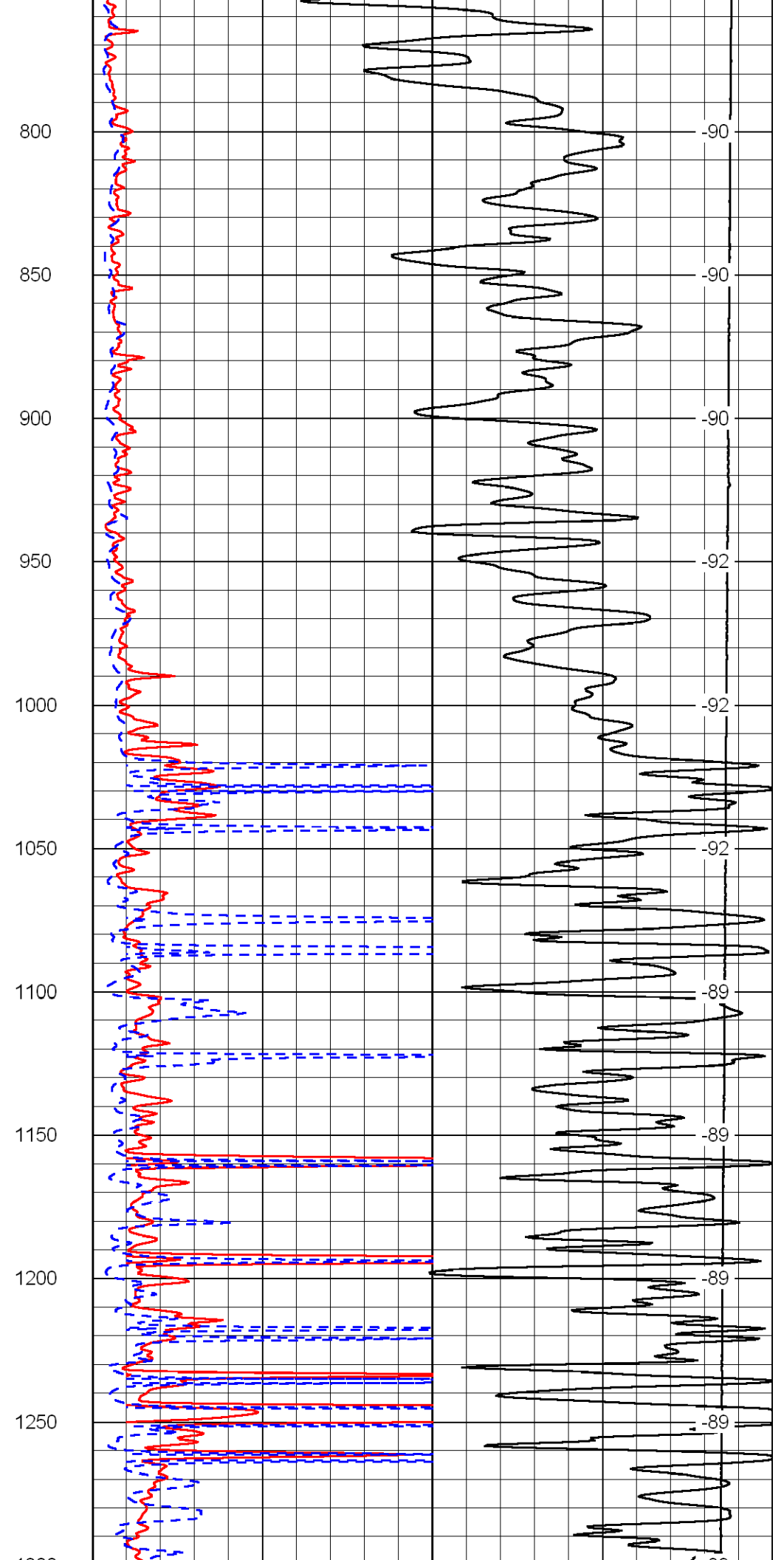
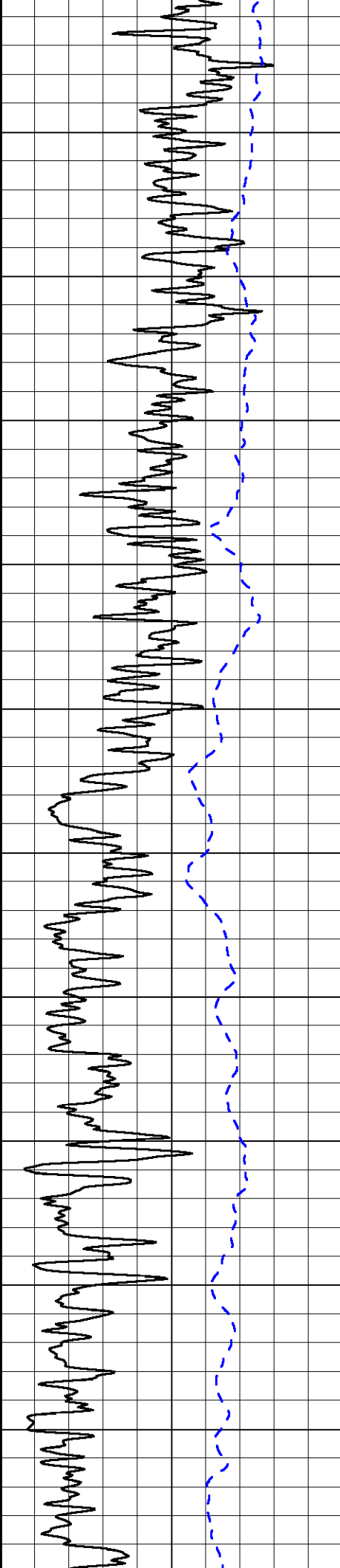
LSPD
 (ft/min)

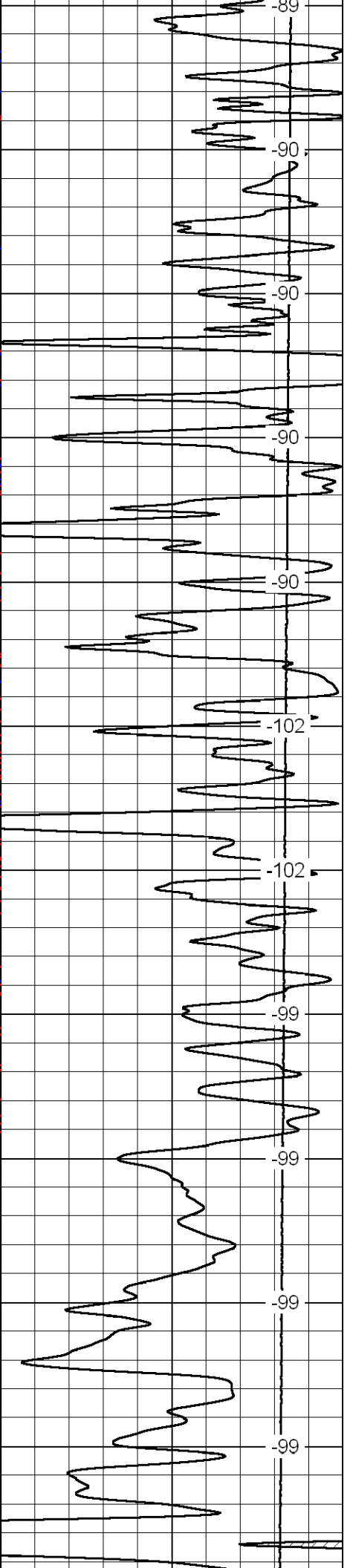
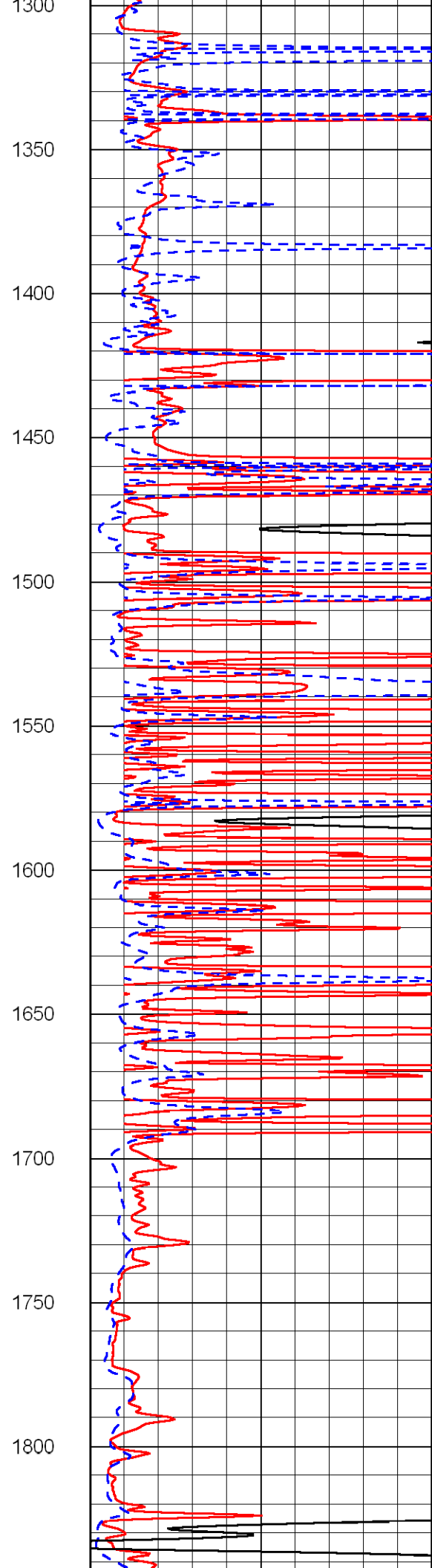
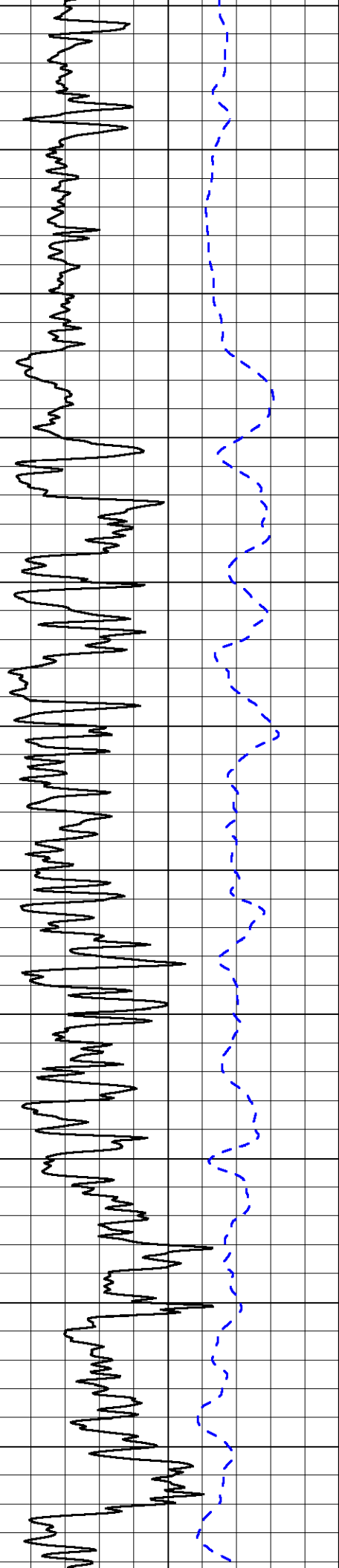
1000 Conductivity (mmho/m) 0

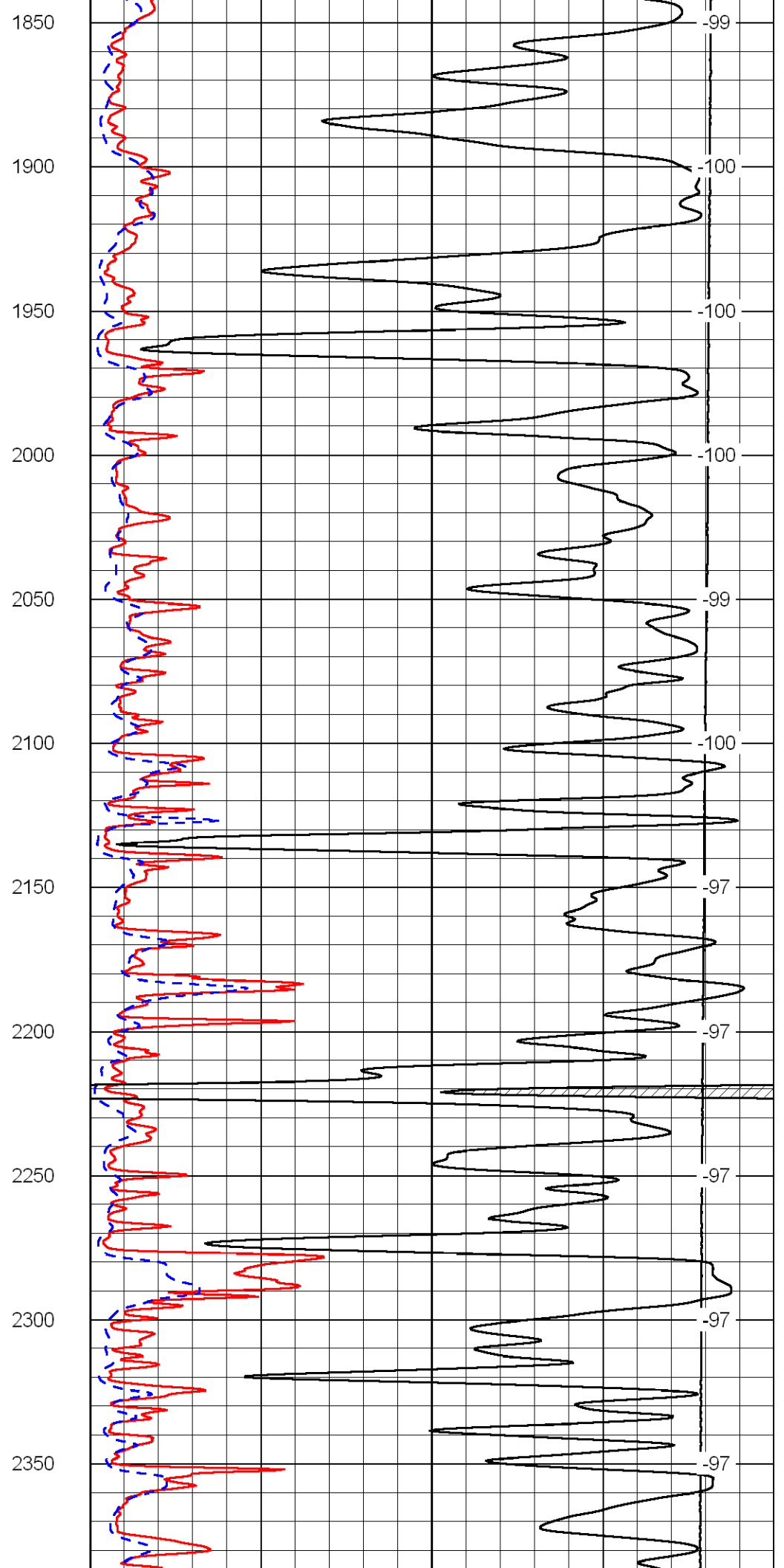
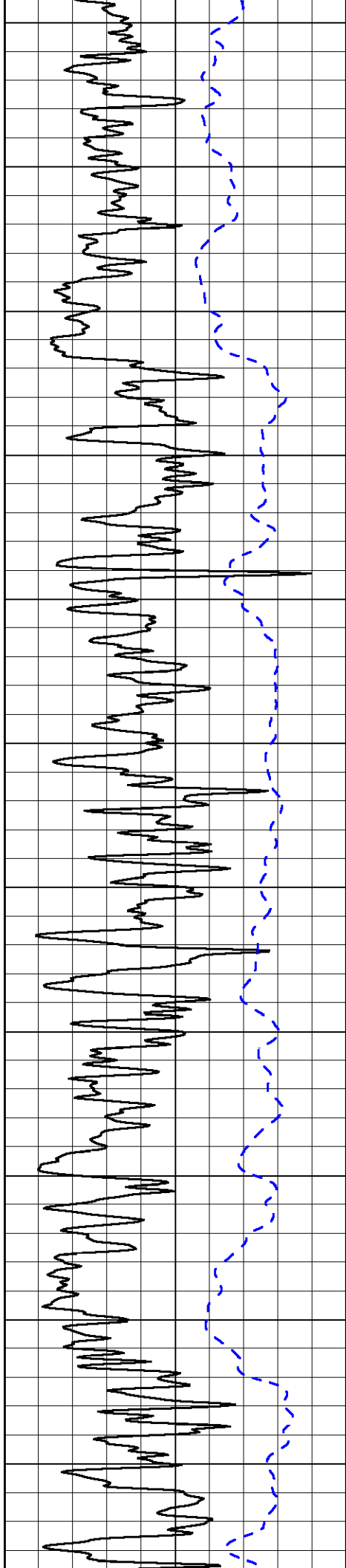
15000 Line Tension (lb) 0

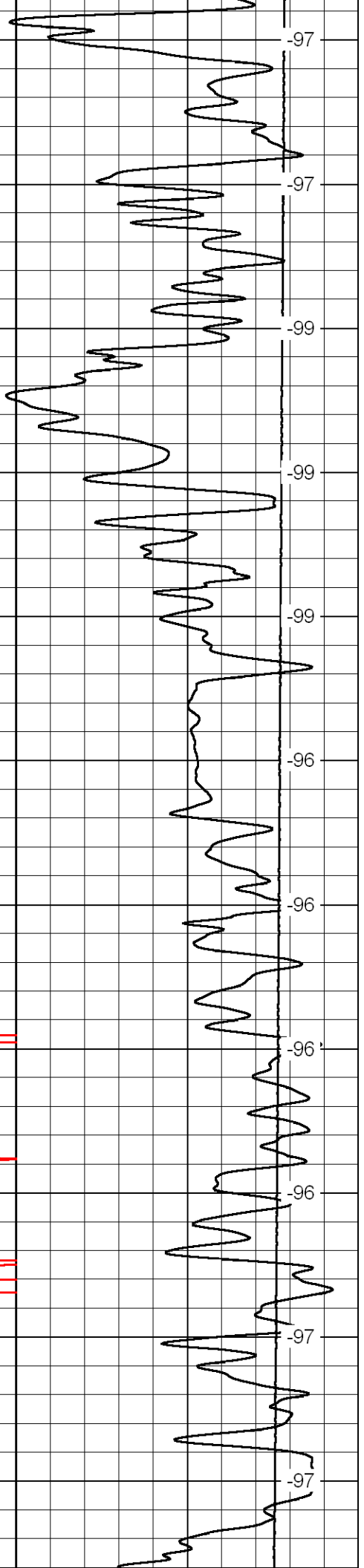
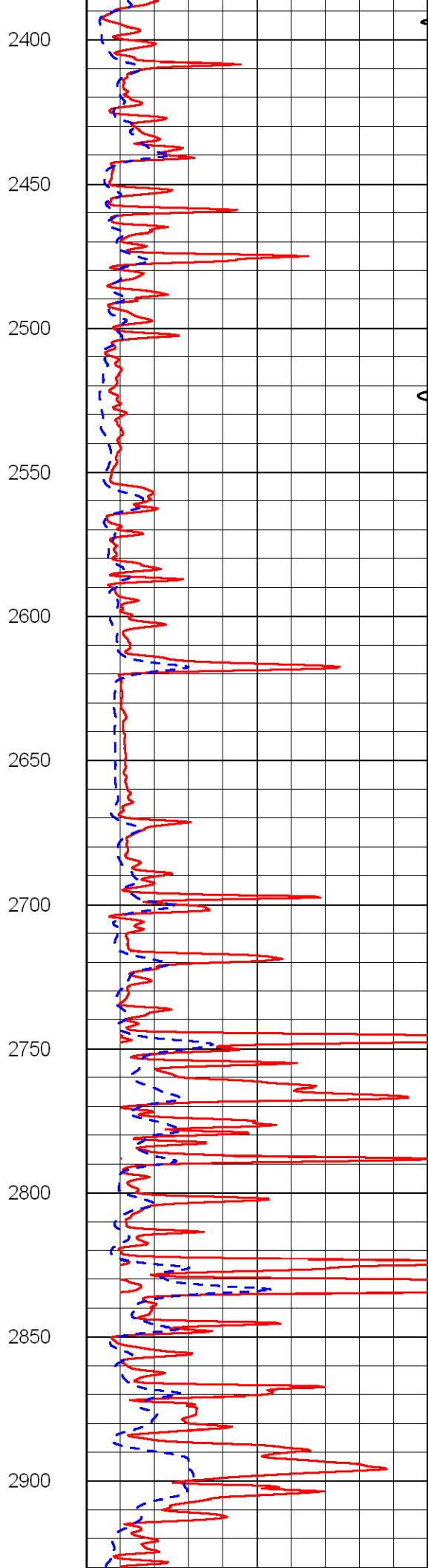
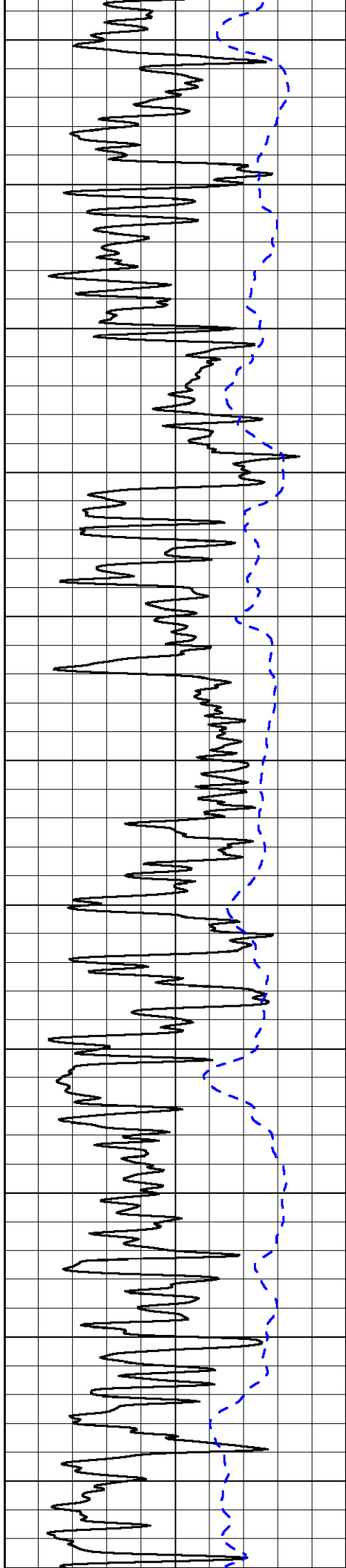
Shallow Resistivity
 50 (Ohm-m) 500
 50 Deep Resistivity (Ohm-m) 500

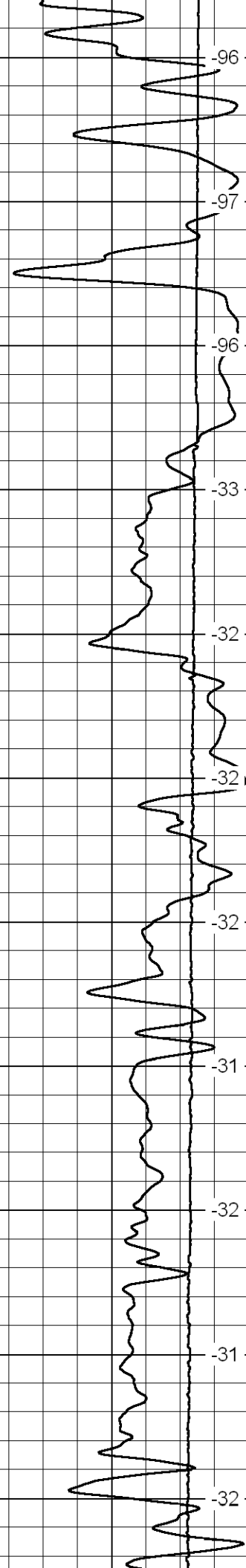
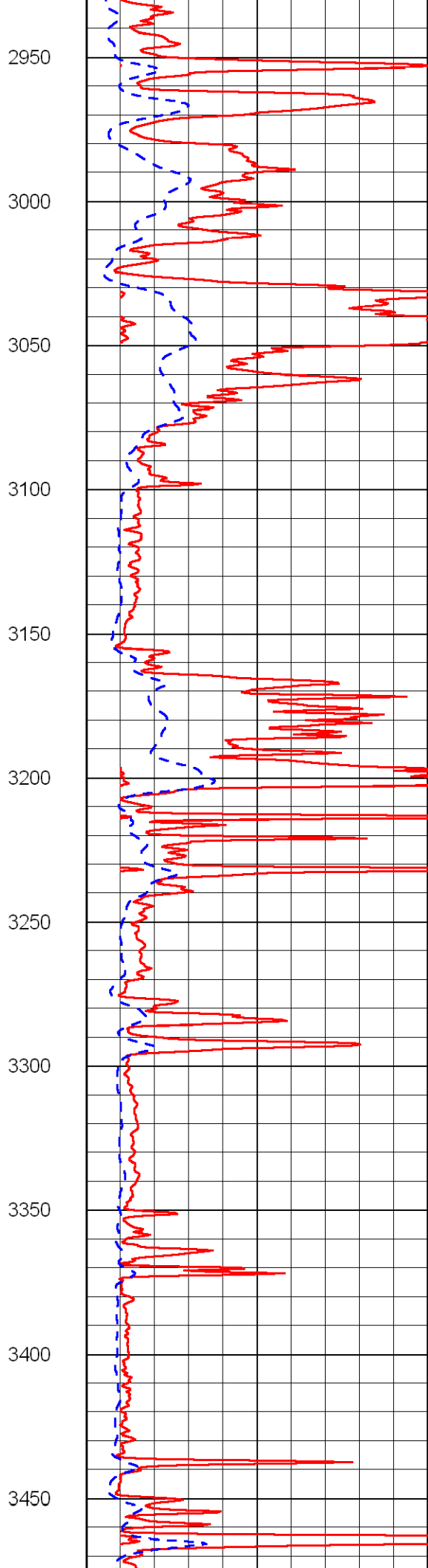
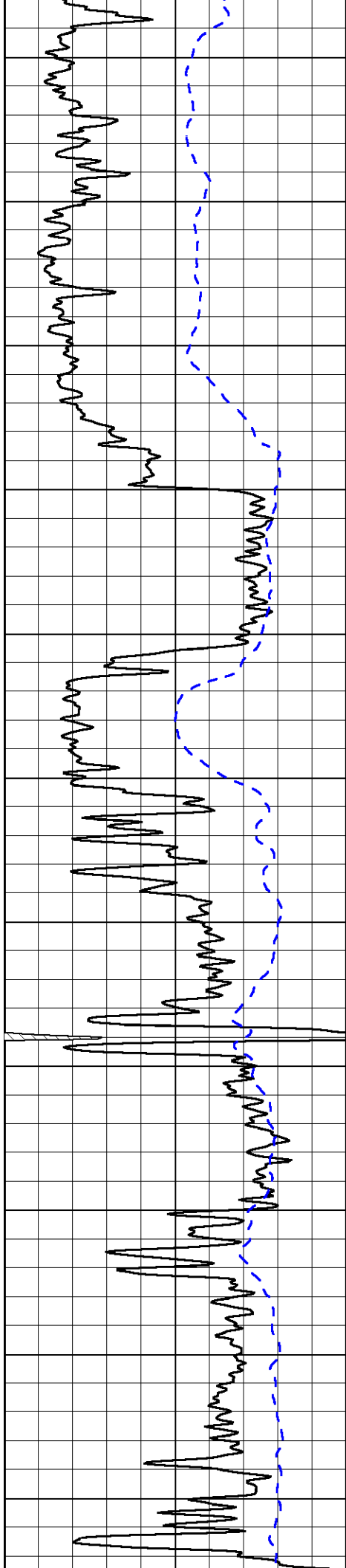


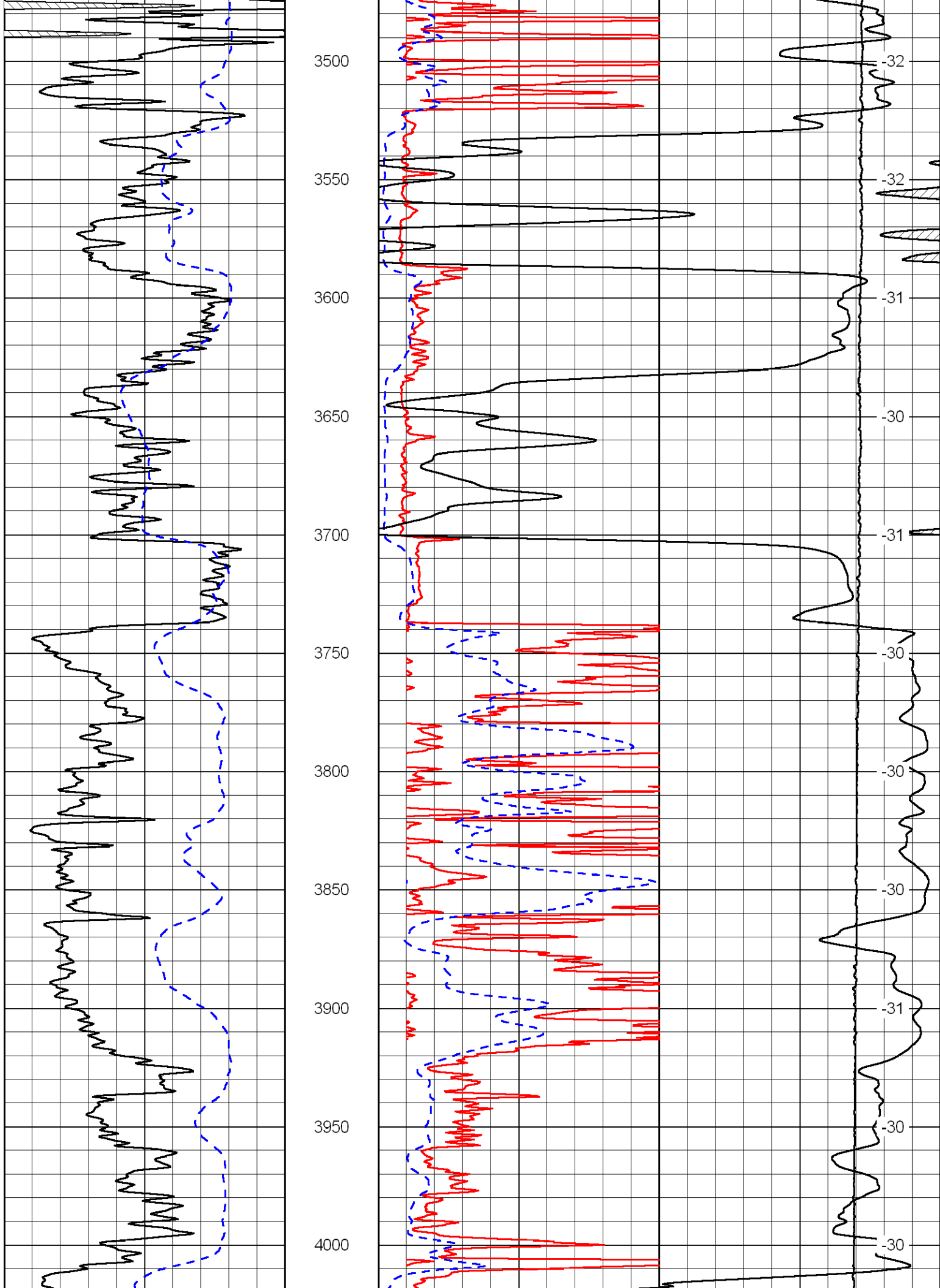


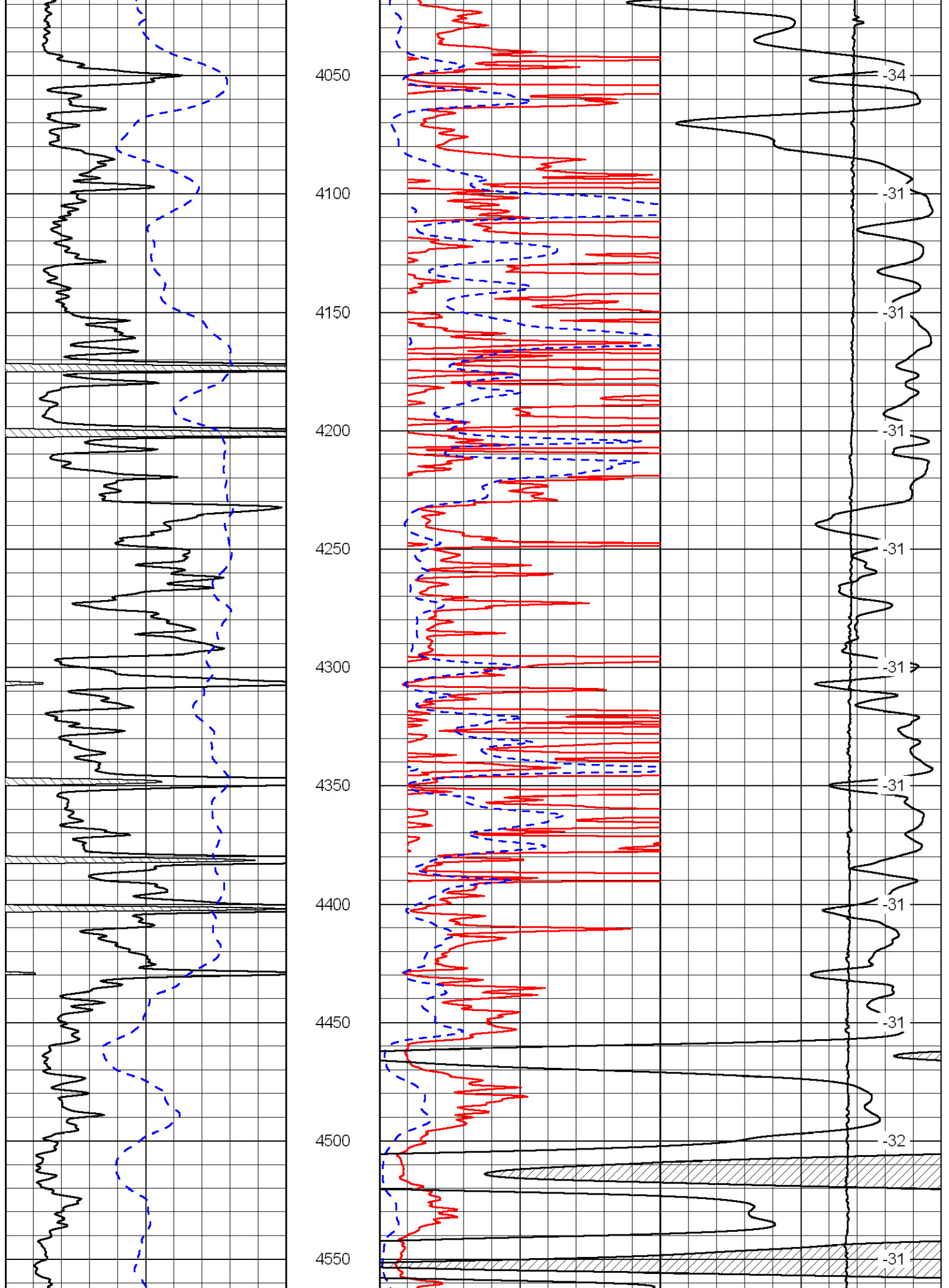


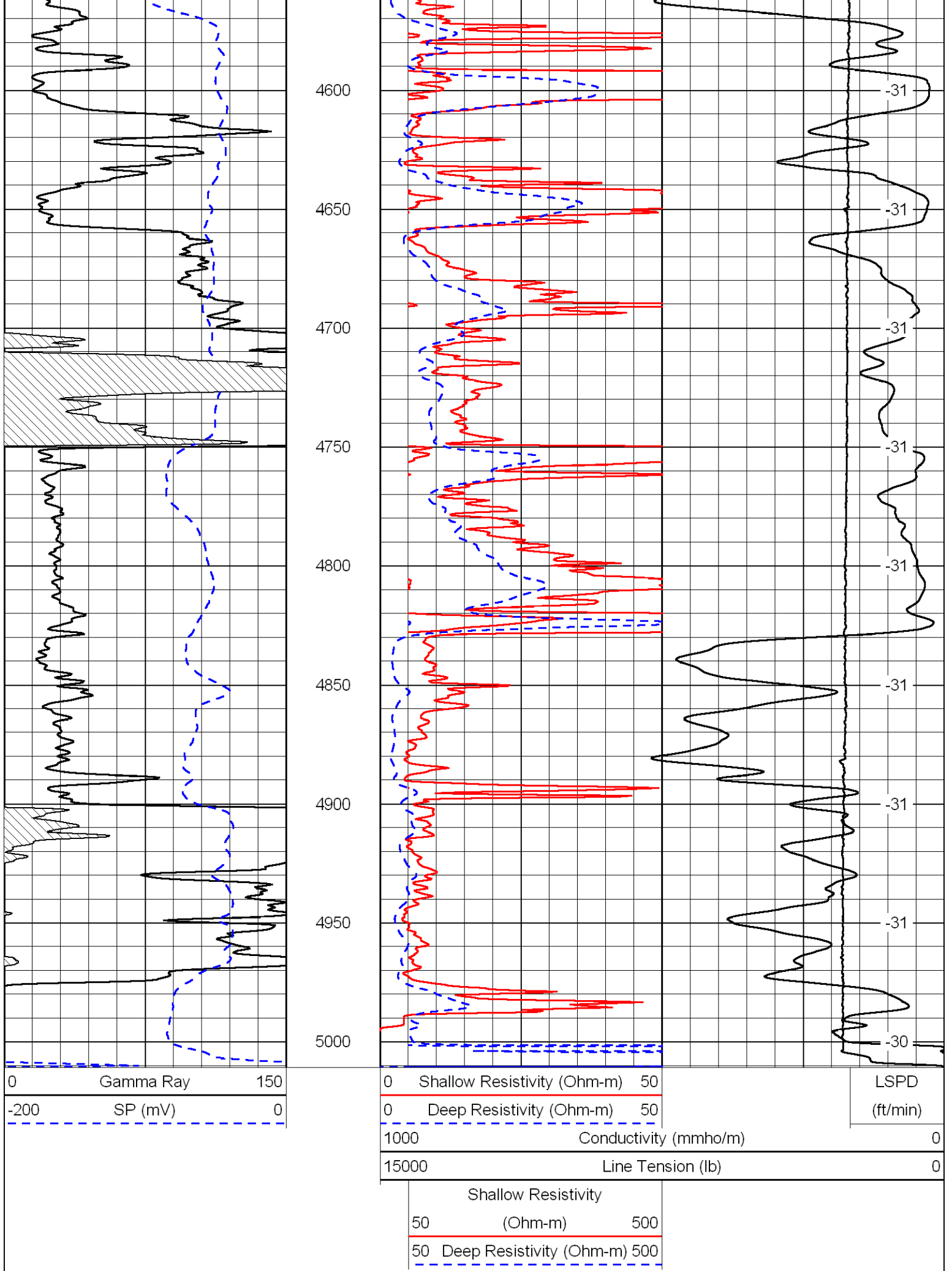










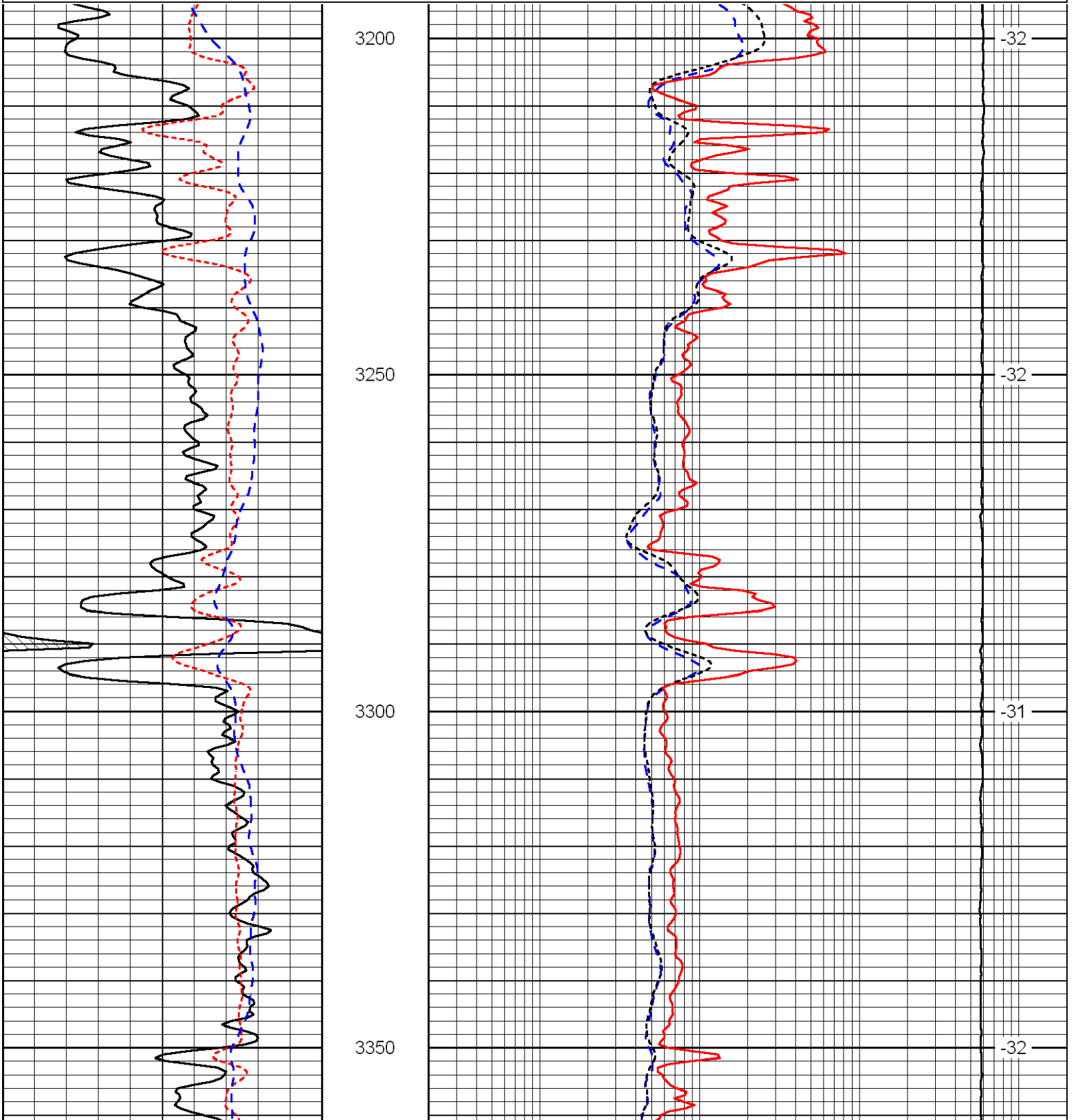


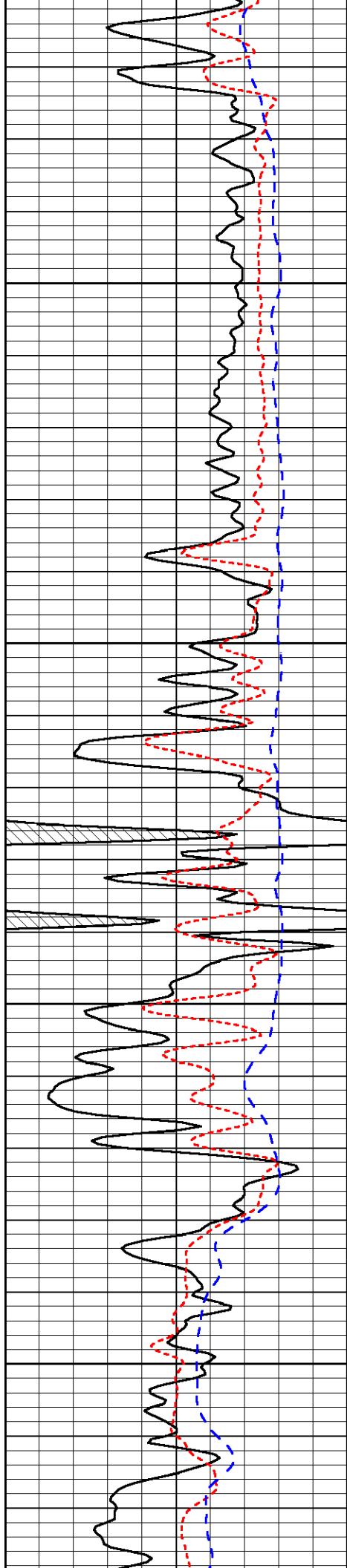
Database File: chieftain_palmer3hd.db
 Dataset Pathname: DIL/chfnstk
 Presentation Format: dil
 Dataset Creation: Sat Aug 18 23:19:49 2012
 Charted by: Depth in Feet scaled 1:240

0	Gamma Ray	150
-160	RXO/RT	40
-200	SP (mV)	0

0.2	Deep Resistivity (Ohm-m)	2000
0.2	Medium Resistivity (Ohm-m)	2000
0.2	Shallow Resistivity (Ohm-m)	2000
15000	Line Tension (lb)	0

LSPD
(ft/min)



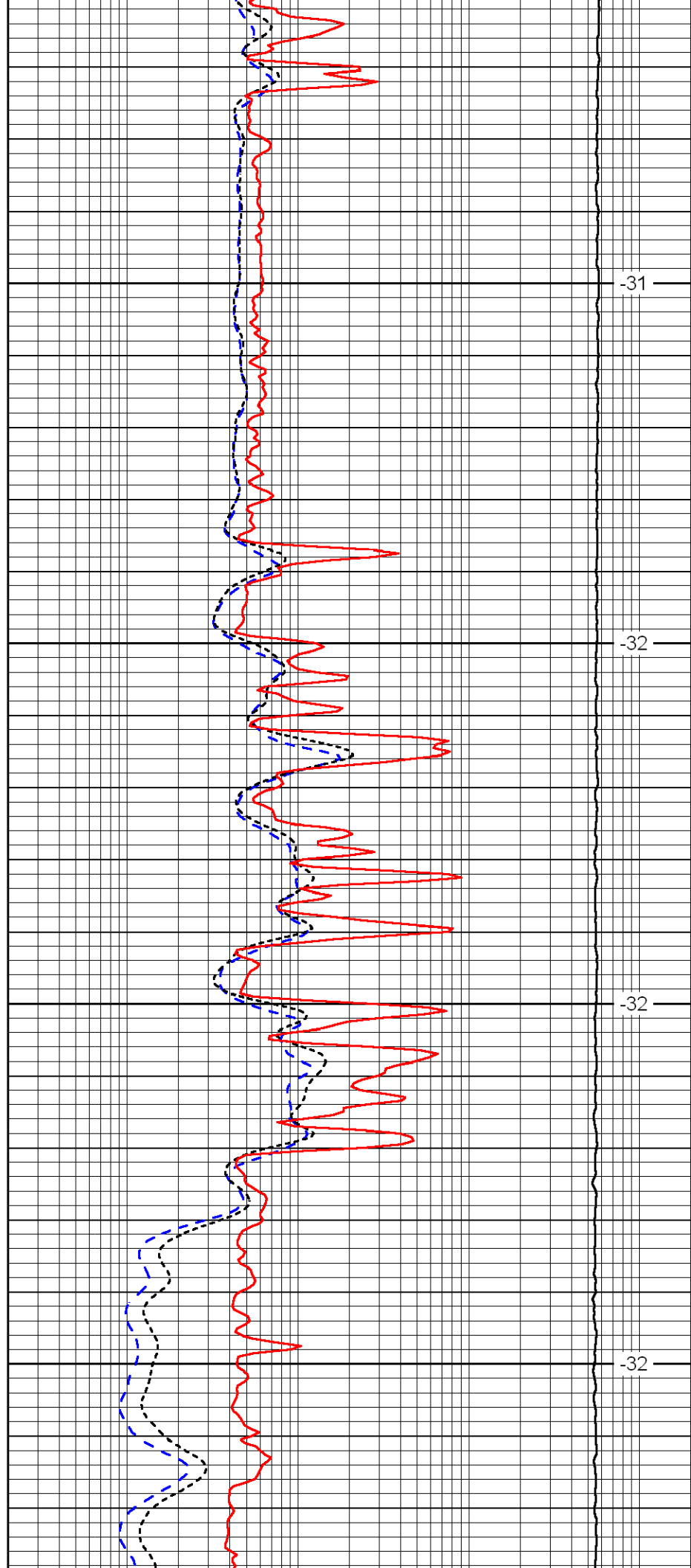


3400

3450

3500

3550

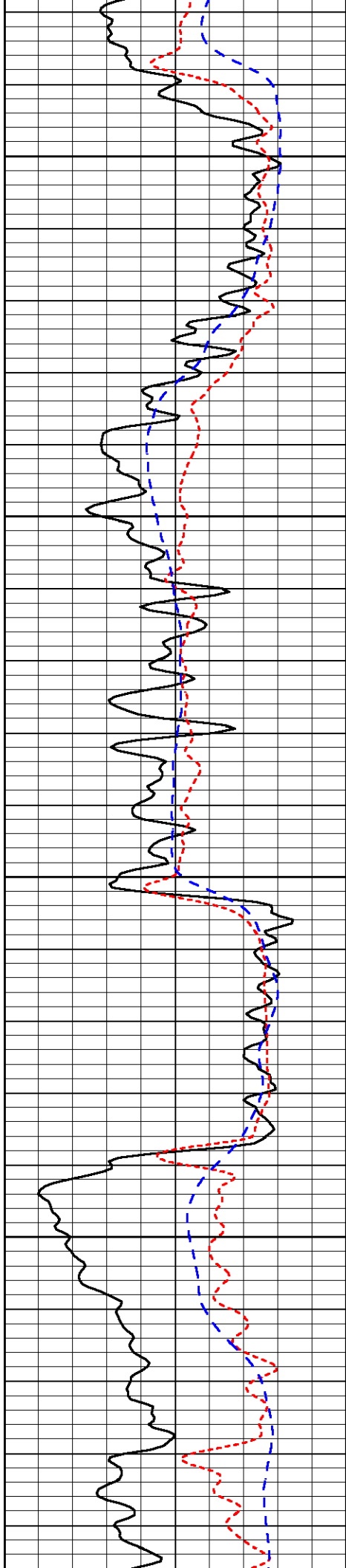


-31

-32

-32

-32

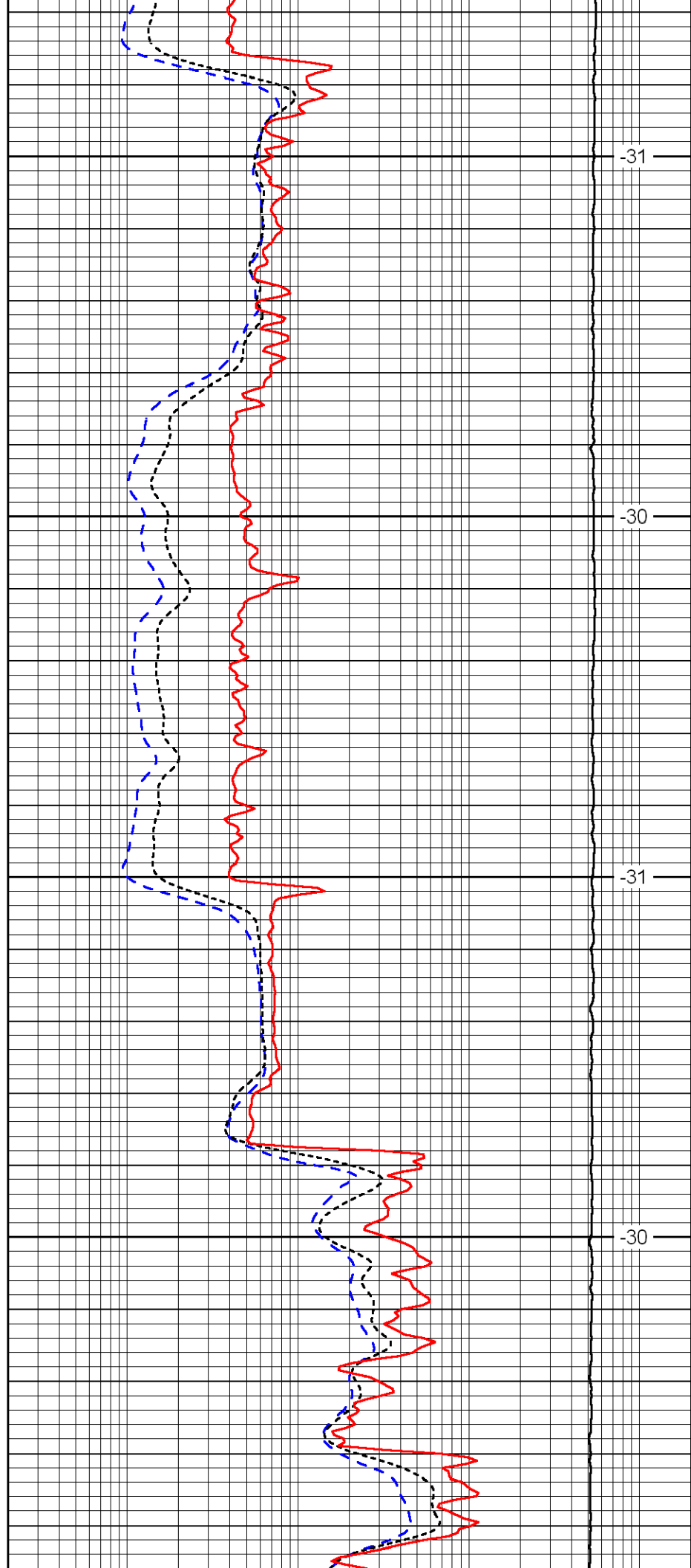


3600

3650

3700

3750

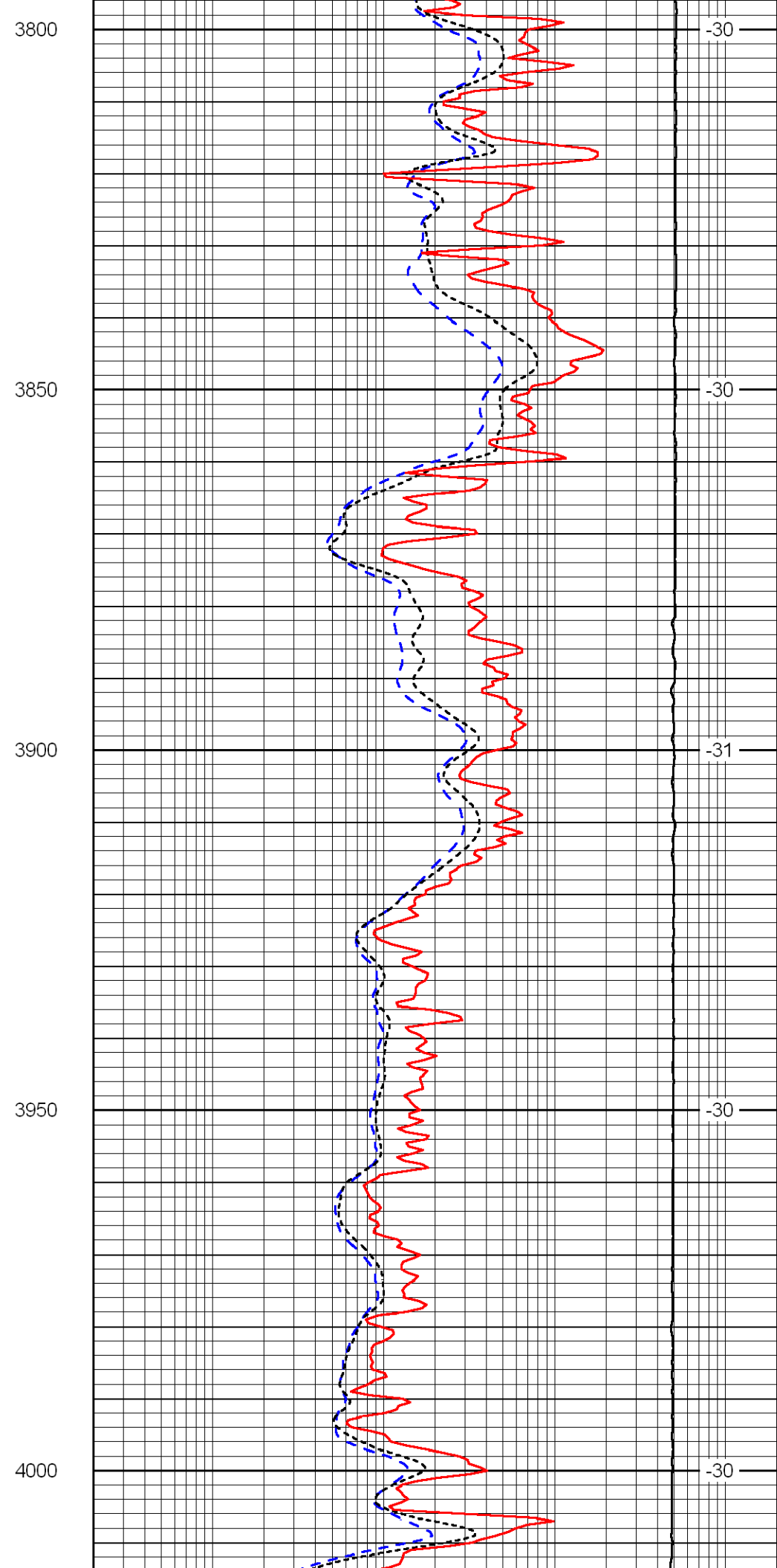
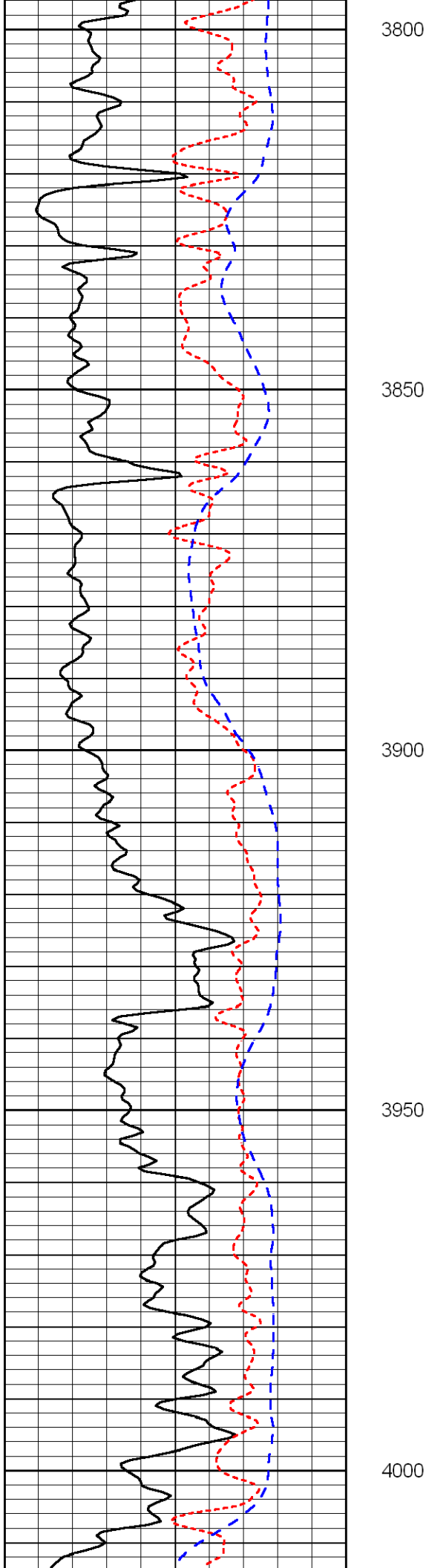


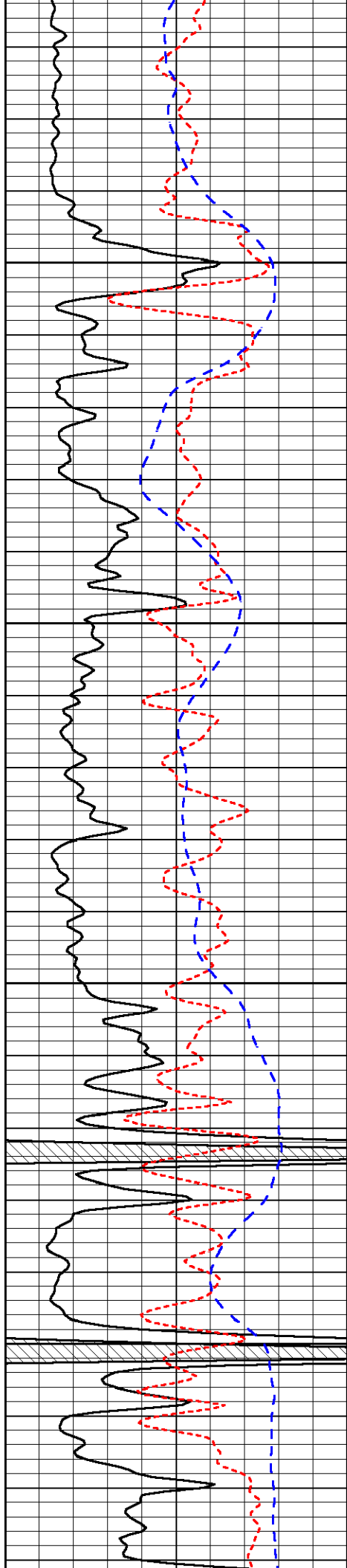
-31

-30

-31

-30



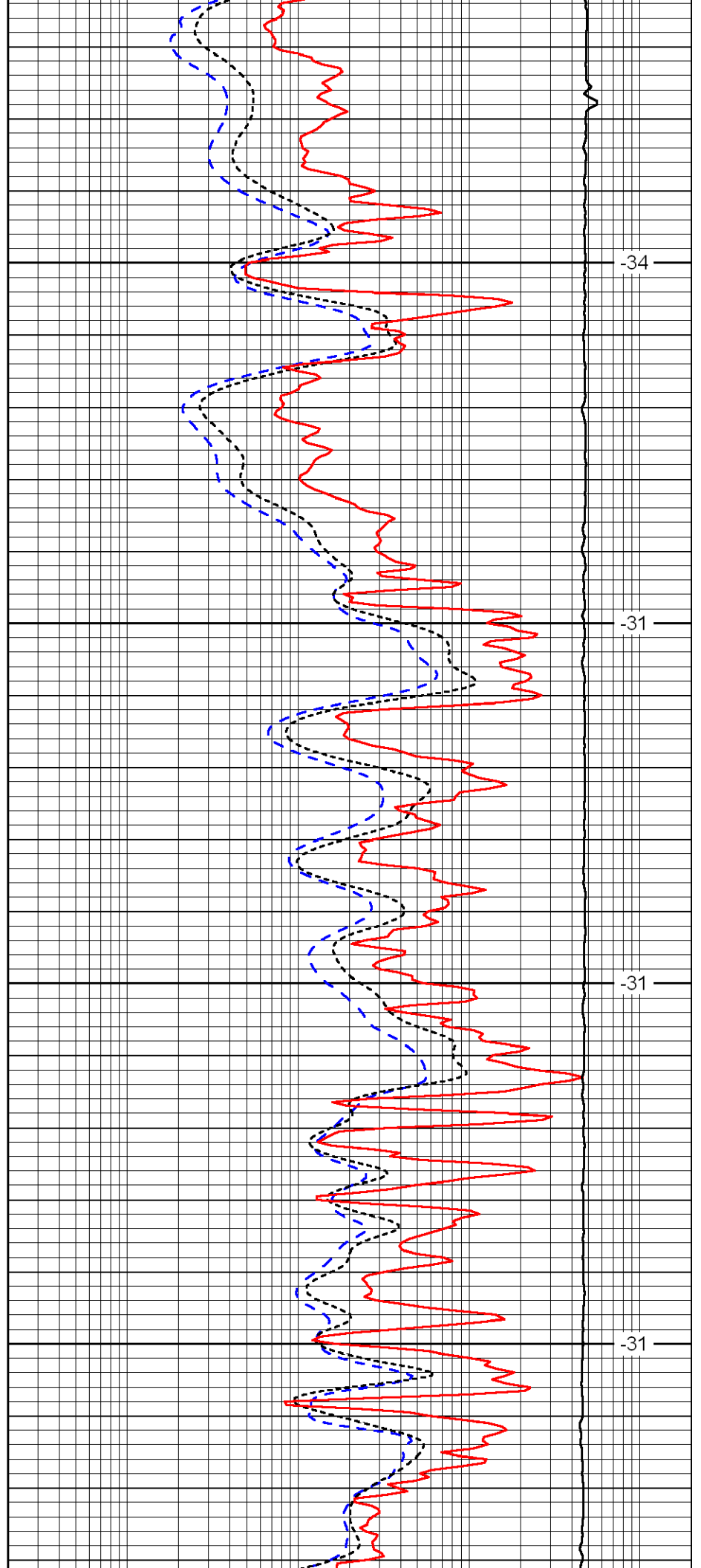


4050

4100

4150

4200

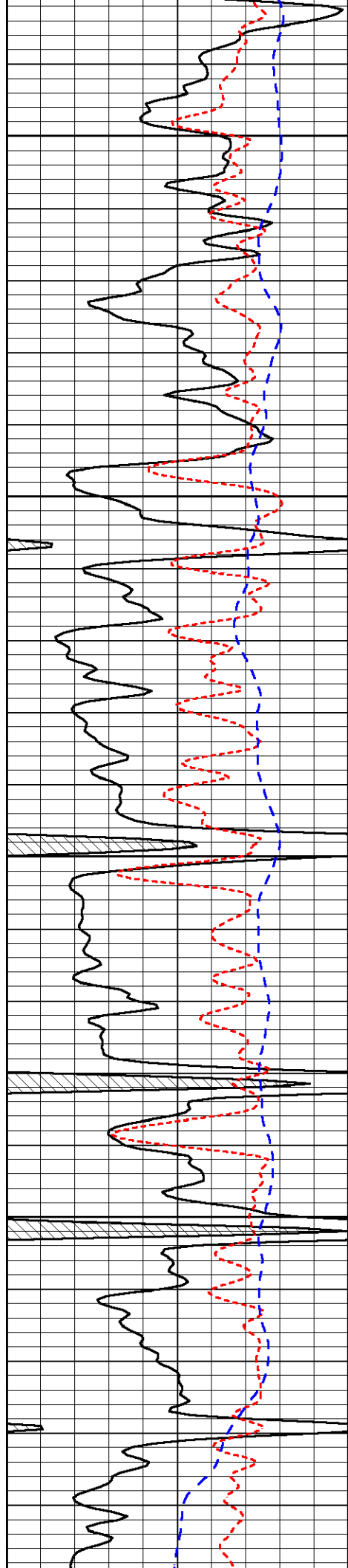


-34

-31

-31

-31

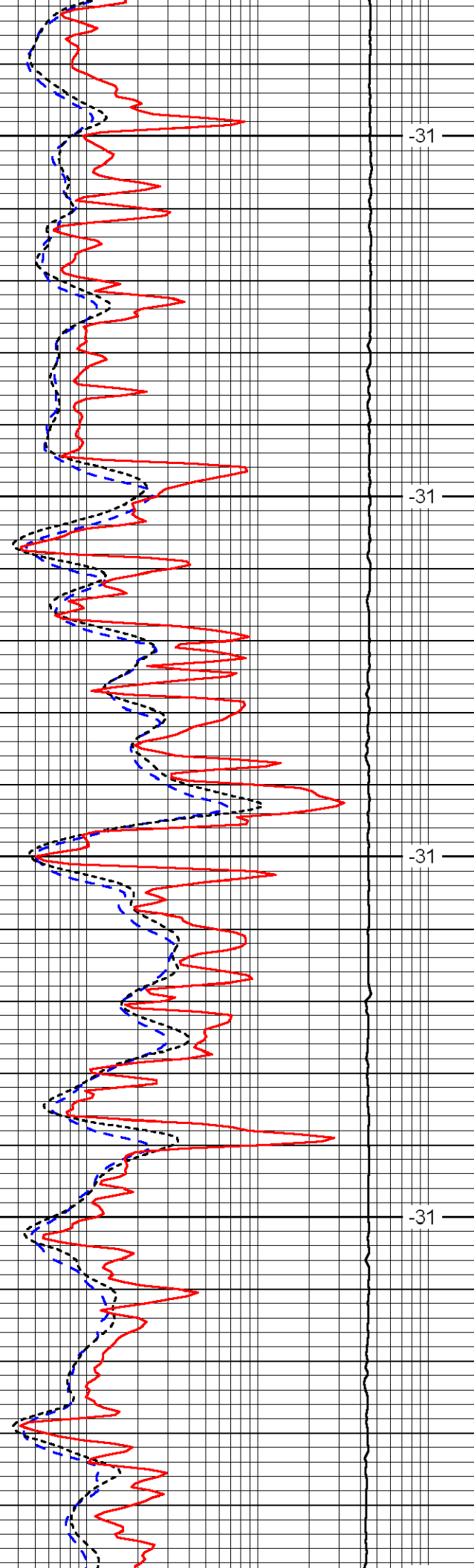


4250

4300

4350

4400

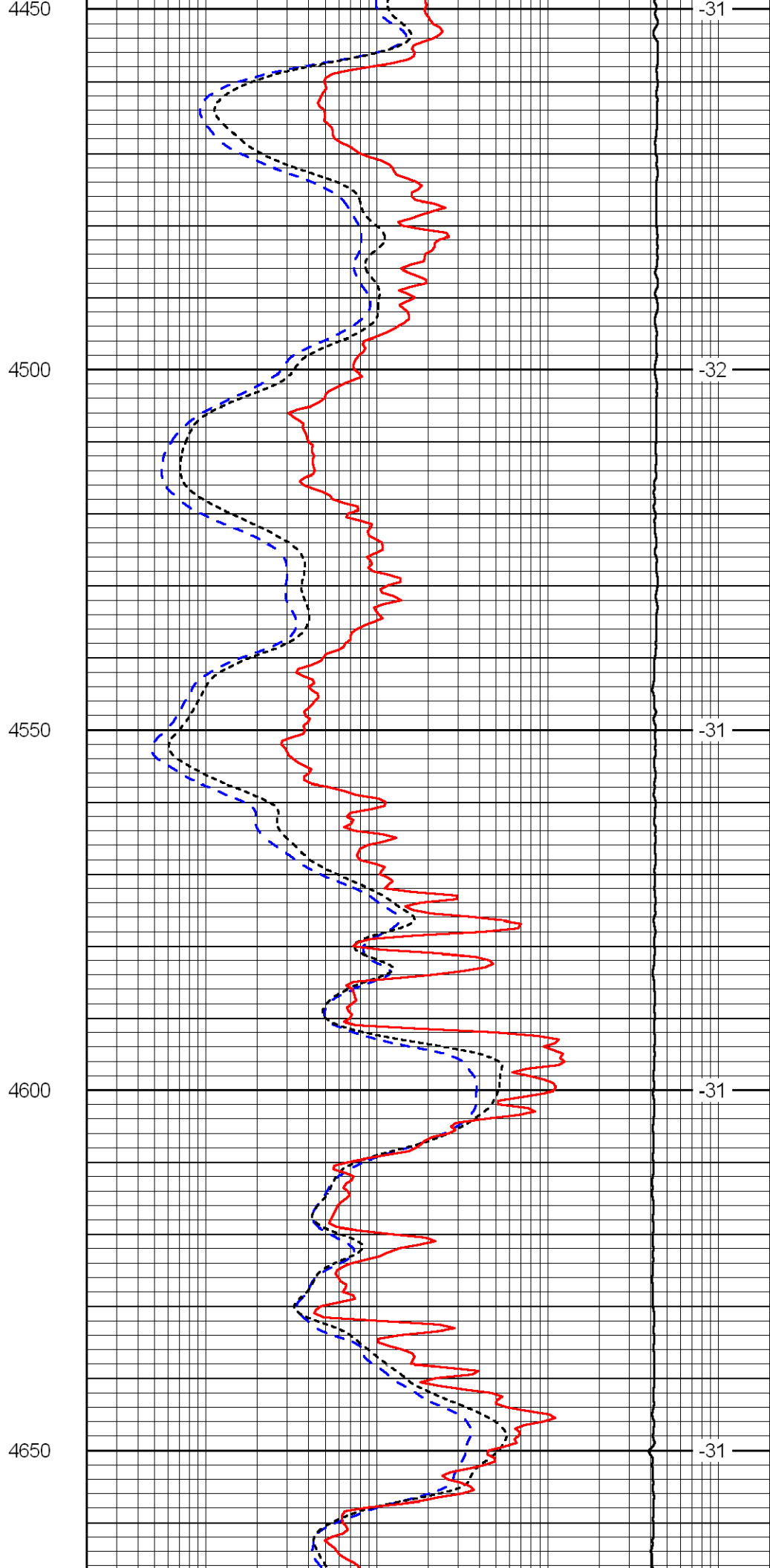
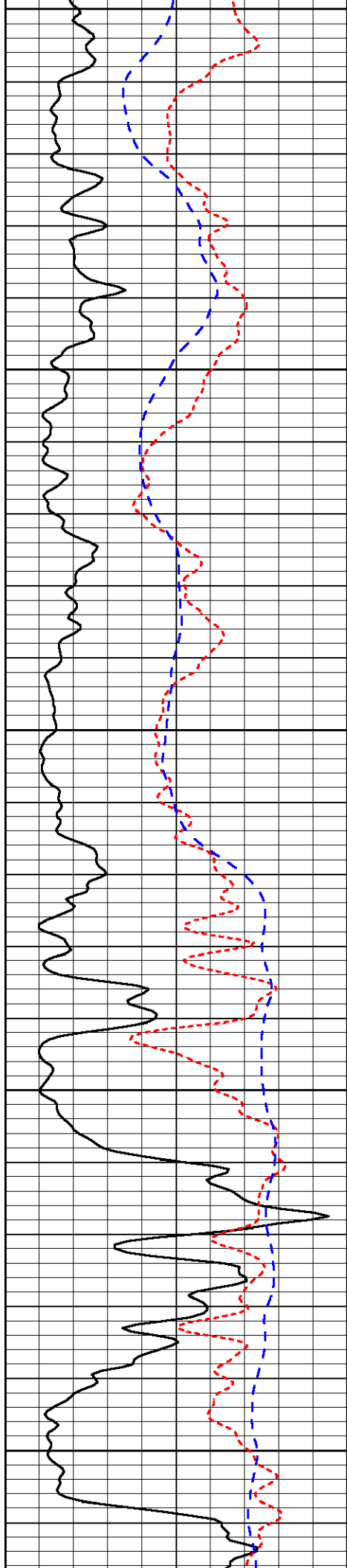


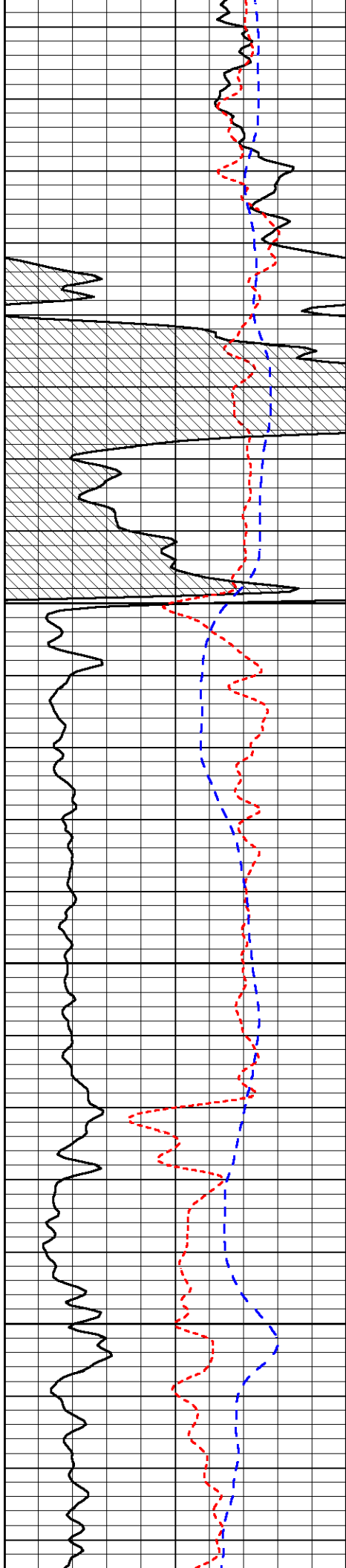
-31

-31

-31

-31



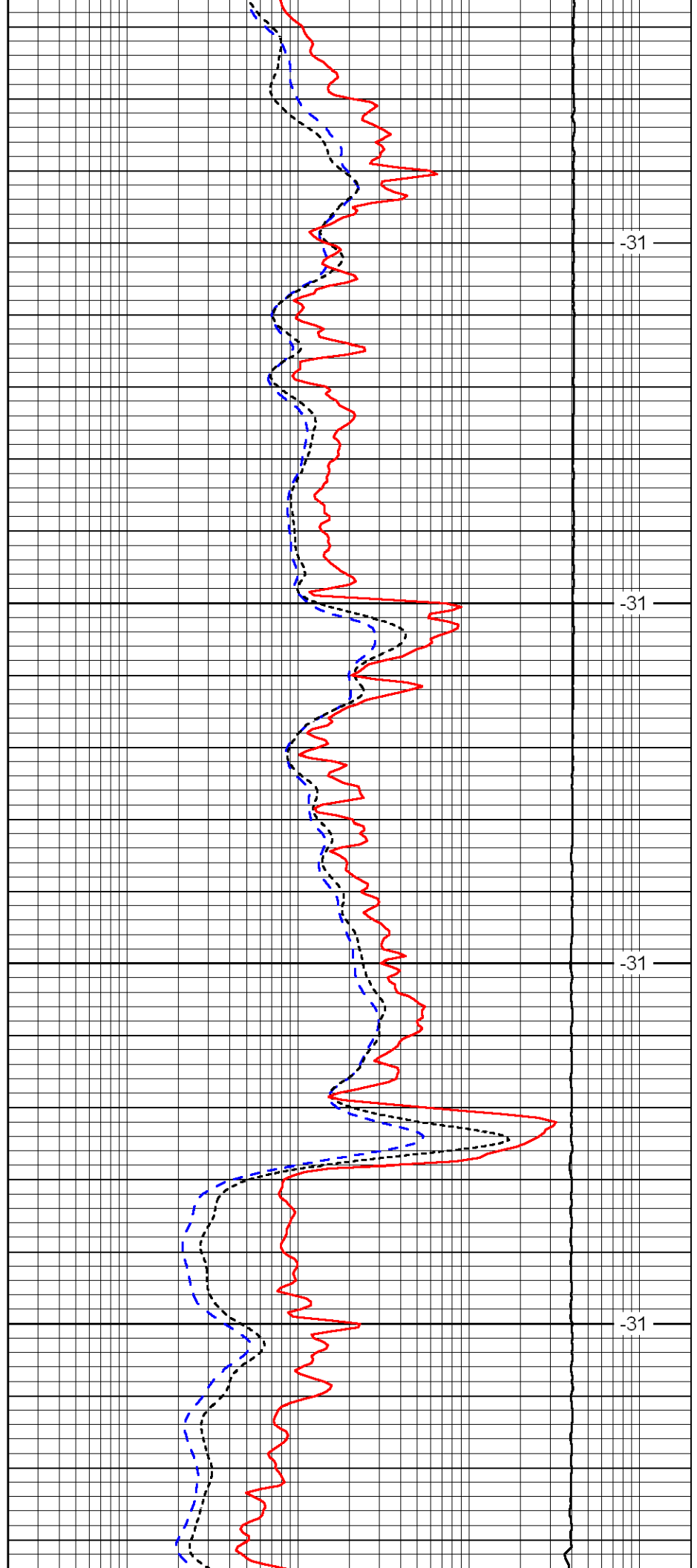


4700

4750

4800

4850

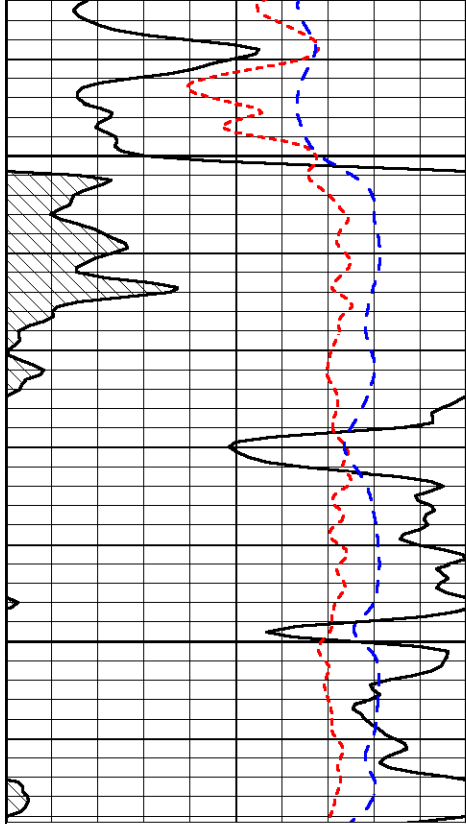


-31

-31

-31

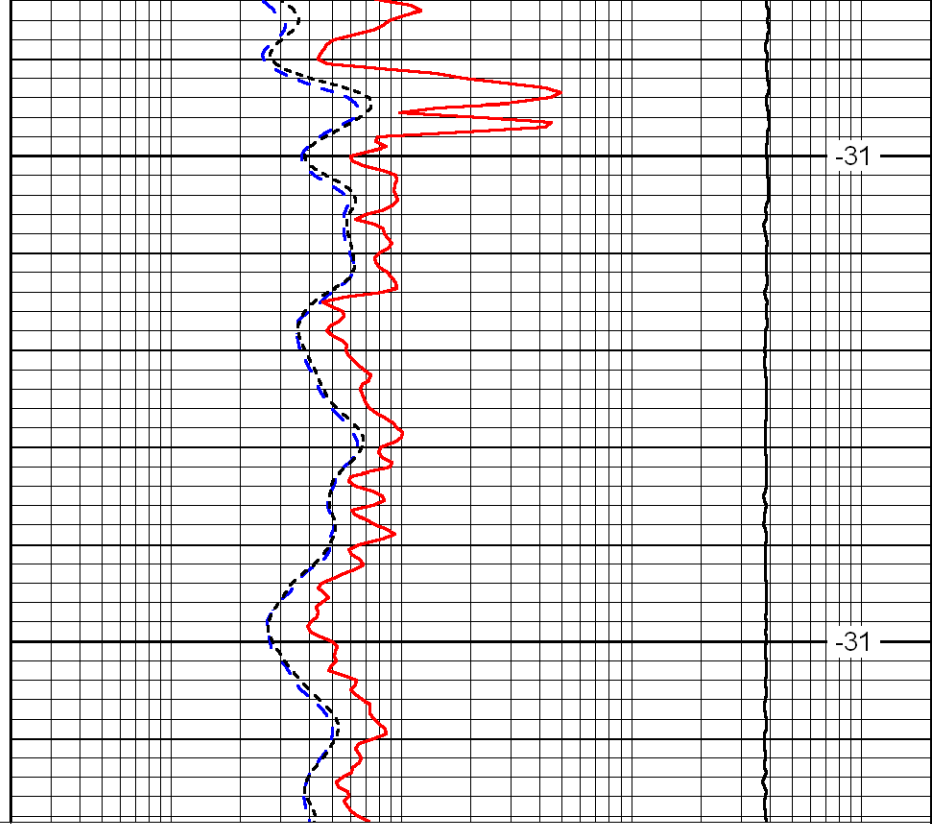
-31



4900

4950

0	Gamma Ray	150
-160	RXO/RT	40
-200	SP (mV)	0



-31

-31

0.2	Deep Resistivity (Ohm-m)	2000
0.2	Medium Resistivity (Ohm-m)	2000
0.2	Shallow Resistivity (Ohm-m)	2000
15000	Line Tension (lb)	0

LSPD
(ft/min)