



Sector Bond / Gamma Ray  
CCL Log

(785) 625-3858

15-167-23658-00-00

Company Russell Oil, Inc.  
Well Steinle No. 1-32  
Field Nuss  
County Russell  
State Kansas

Location 990' FNL & 1730' FEL

Sec: 32 Twp: 15S Rge: 14W

Other Services  
Portable Mast

Permanant Datum Ground Level Elevation 1921  
Log Measured From Kelly Bushing 7 Ft. Above Perm. Datum  
Drilling Measured From Kelly Bushing

Elevation  
K.B. 1928  
D.F.  
G.L. 1921

Run Number	One	
Date Survey	9/20/2010	
Date Cementing	9/16/2010	
Type Cementing Operation	Primary	
Depth Driller	3410	
Depth Logger	3371	
Logged Interval	3370 to 2500	to
Casing Driller	5.5 @ T.D.	@
Float Collar -- D.V. Tool	////	////
Squeeze Depth	////	
Amount & Type Cement	////	
Amount & Type Admix	////	
Type Fluid In Hole	Water	
Fluid Level	Full	
Salinity PPM CL	////	
Weight lb/gal -- Vis.	////	////
Approx. Logged Cement Top	2605	
Calculated Cement Top	////	
Max. Hole Temperature	112	
Tool No.	RBT 4-4	
Spacing Recorded	3-5	
Equipment -- Location	14 Hays	
Recorded By	David Walker	
Witnessed By	Todd Brown	

<<< Fold Here >>>

All interpretations are opinions based on inferences from electrical or other measurements and we cannot and do not guarantee the accuracy or correctness of any interpretation, and we shall not, except in the case of gross or willful negligence on our part, be liable or responsible for any loss, costs, damages, or expenses incurred or sustained by anyone resulting from any interpretation made by any of our officers, agents or employees. These interpretations are also subject to our general terms and conditions set out in our current Price Schedule.

Comments

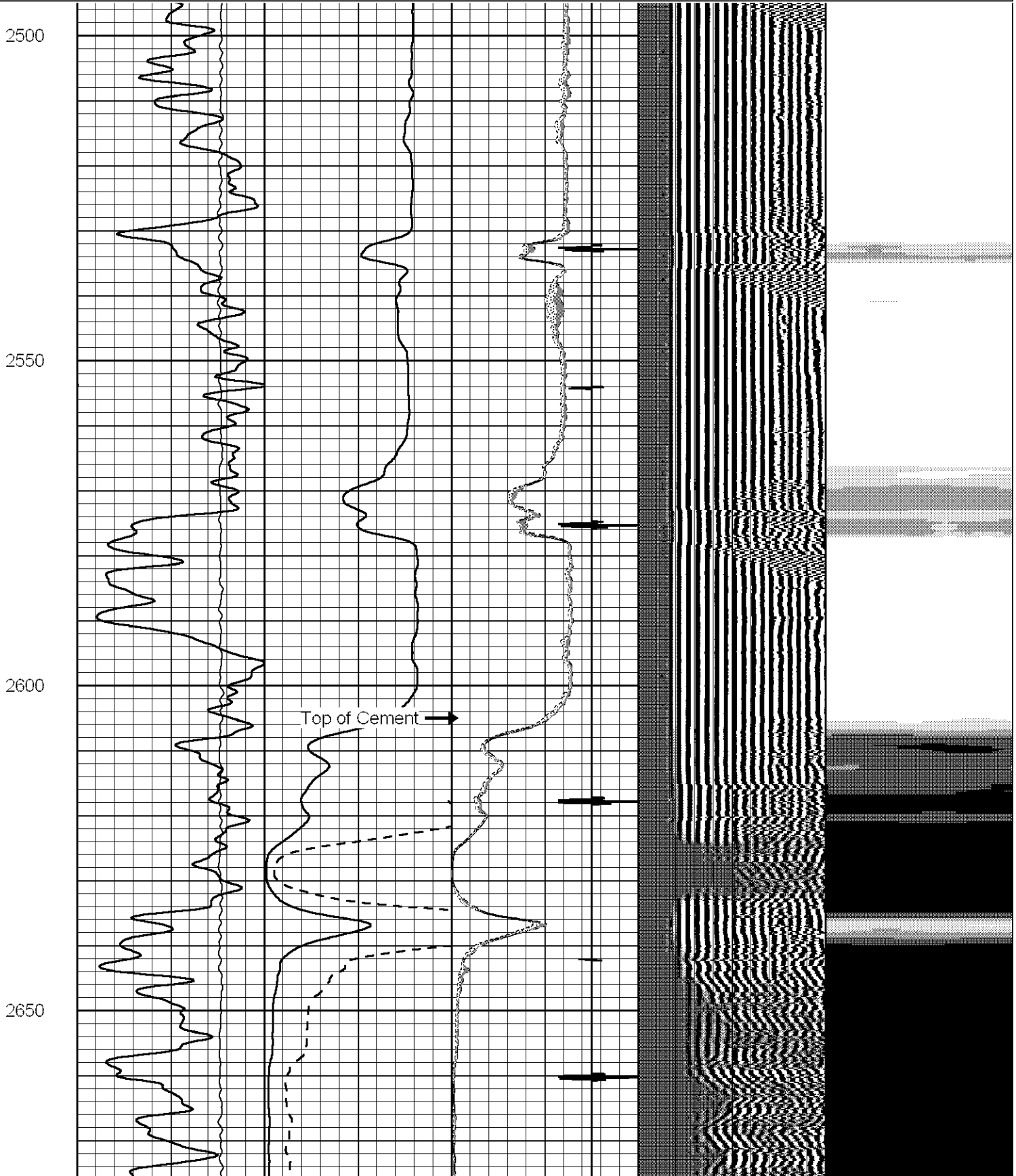
Thank you for using Log-Tech, Inc.  
(785) 625-3858  
Russell KS.  
South on 281 hwy.,  
To Michaelis Rd.  
2 3/4 W,  
S, Into



Main Pass

Database File: russelloilsteine1-32.db  
 Dataset Pathname: sgrcbl/pass4.1  
 Presentation Format: scbl  
 Dataset Creation: Mon Sep 20 16:07:03 2010 by Calc Std Casedhole 09061  
 Charted by: Depth in Feet scaled 1:240

0	Gamma Ray	150	0	Amplitude (mV)	100	0	AMPAVG	150	200	VDL	1200	1	Sector Map	8
LTEN			Amplified Amplitude			0	AMPMAX	150	25			75		
150	GR	375	0	(mV)	20	0	AMPMIN	150						
			-----			3	CCL	-1						

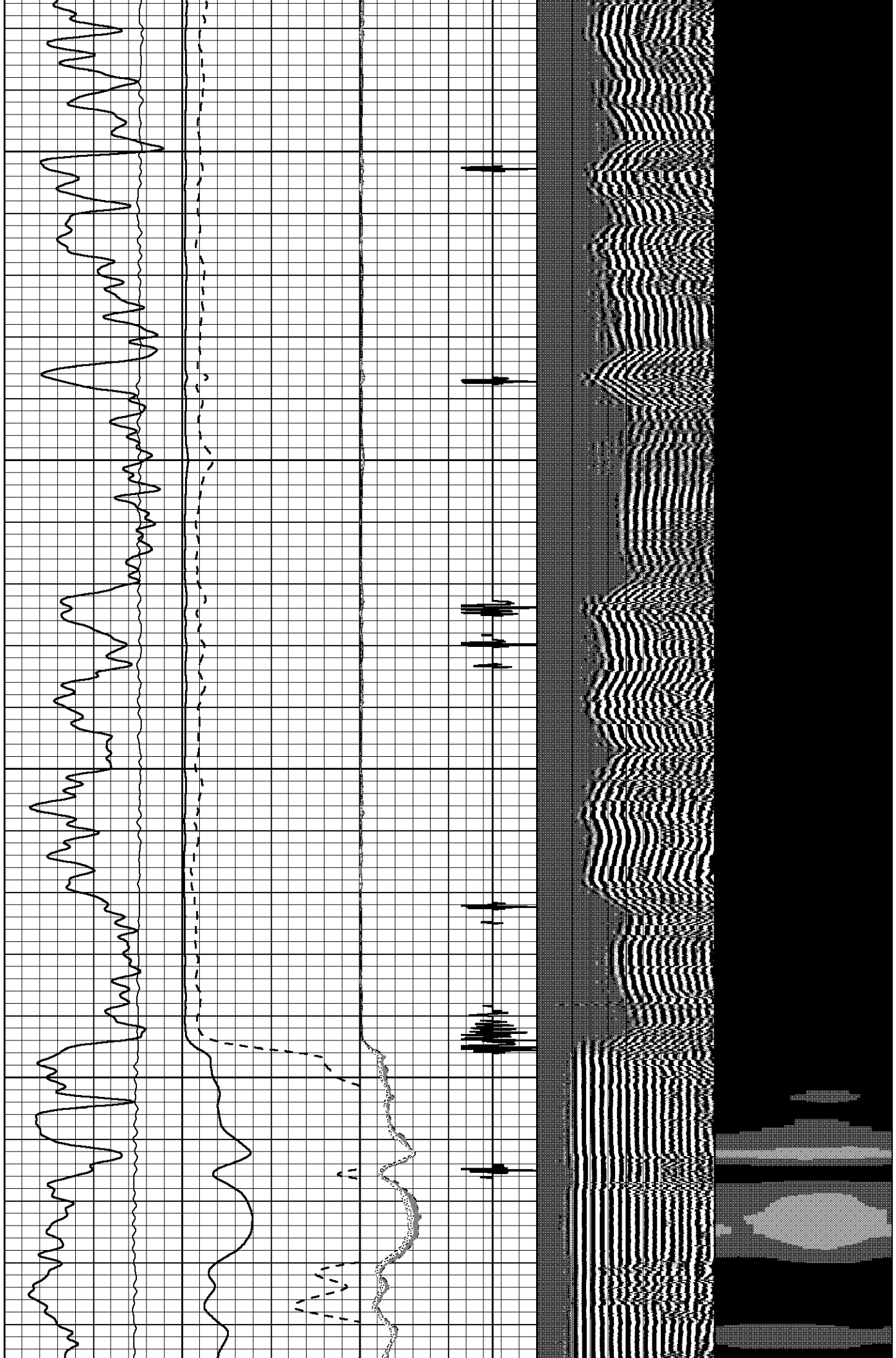


2700

2750

2800

2850



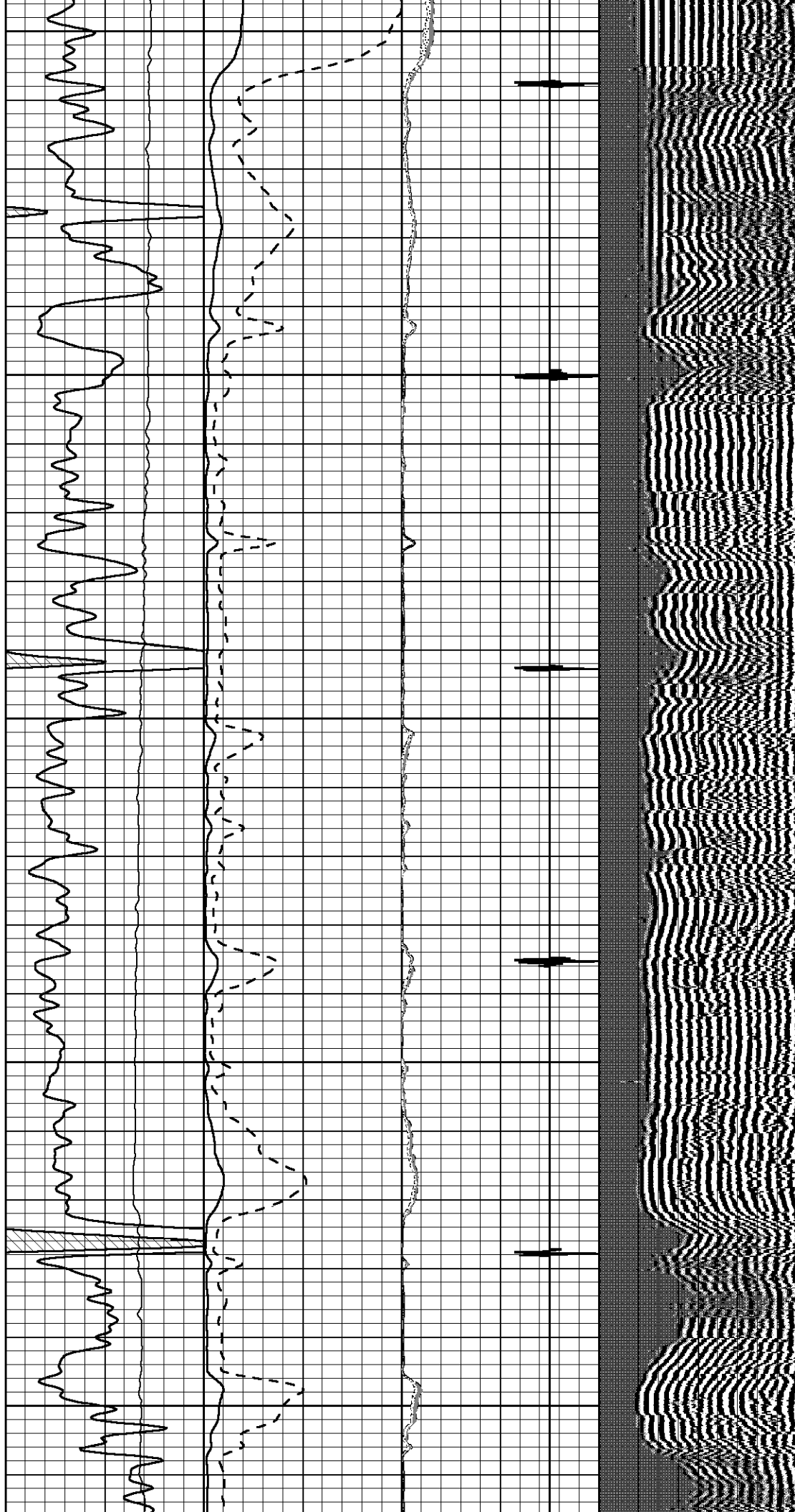
2900

2950

3000

3050

3100

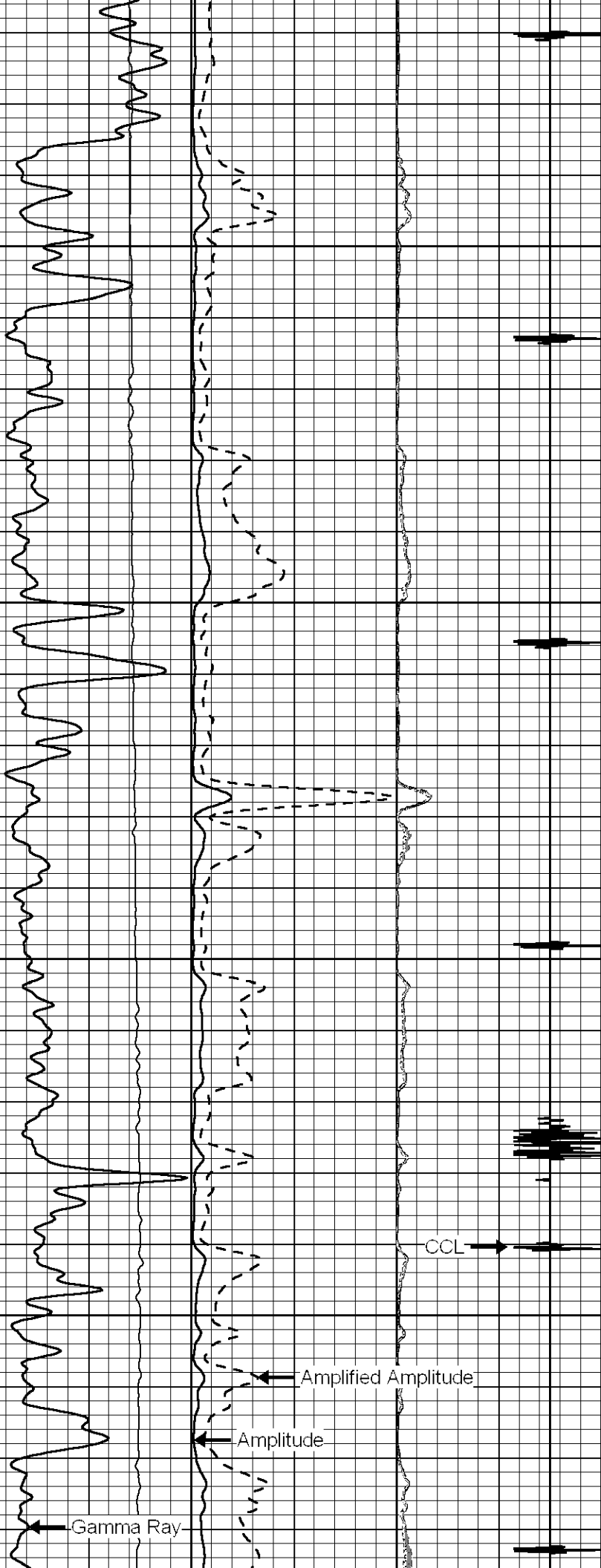


3150

3200

3250

3300

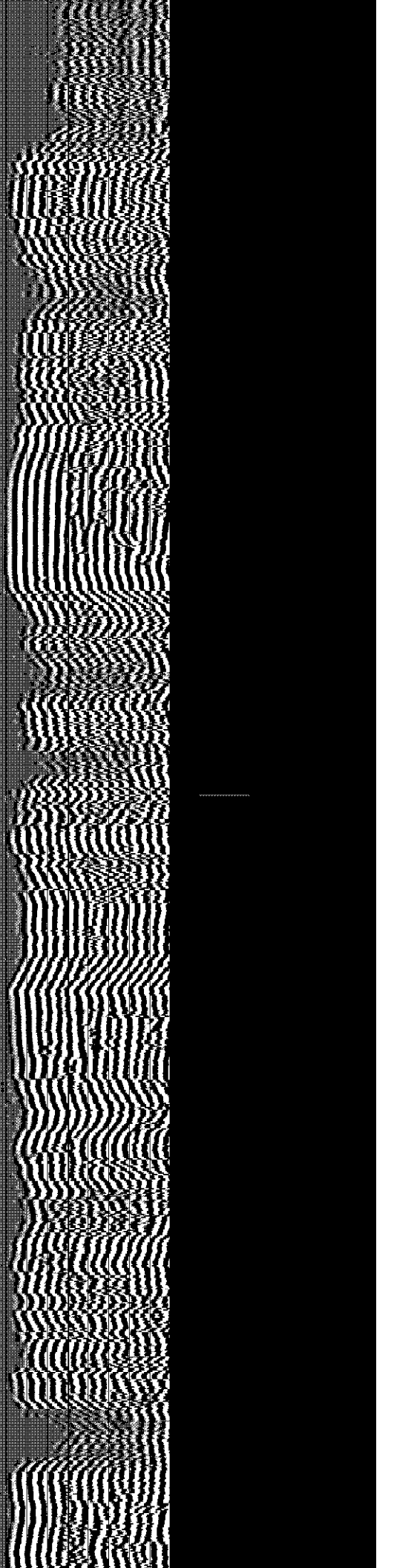


Gamma Ray

Amplitude

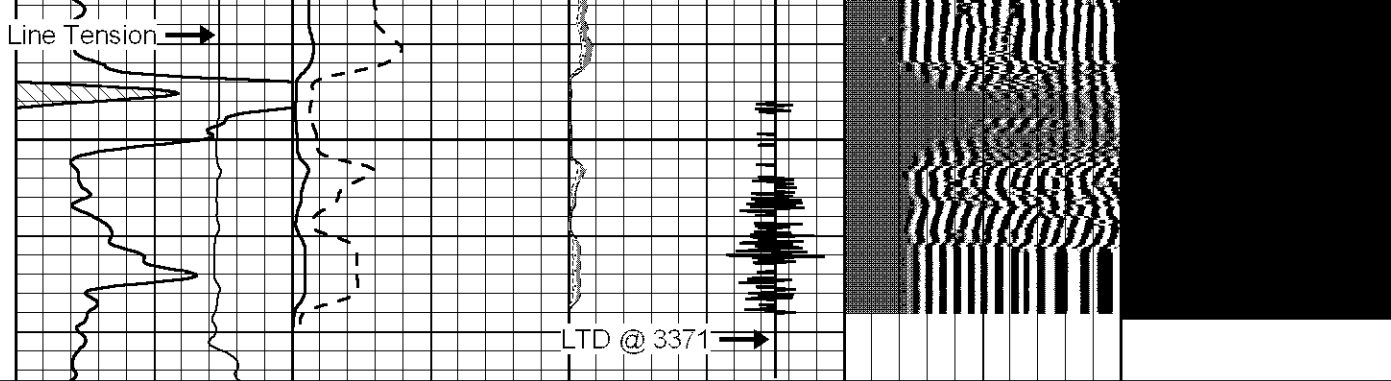
Amplified Amplitude

CCL



Line Tension →

3350



0	Gamma Ray	150	0	Amplitude (mV)	100	0	AMPAVG	150	200	VDL	1200	1	Sector Map	8
	LTEN			Amplified Amplitude		0	AMPMAX	150				25		75
150	GR	375	0	(mV)	20	0	AMPMIN	150						
						3	CCL	-1						



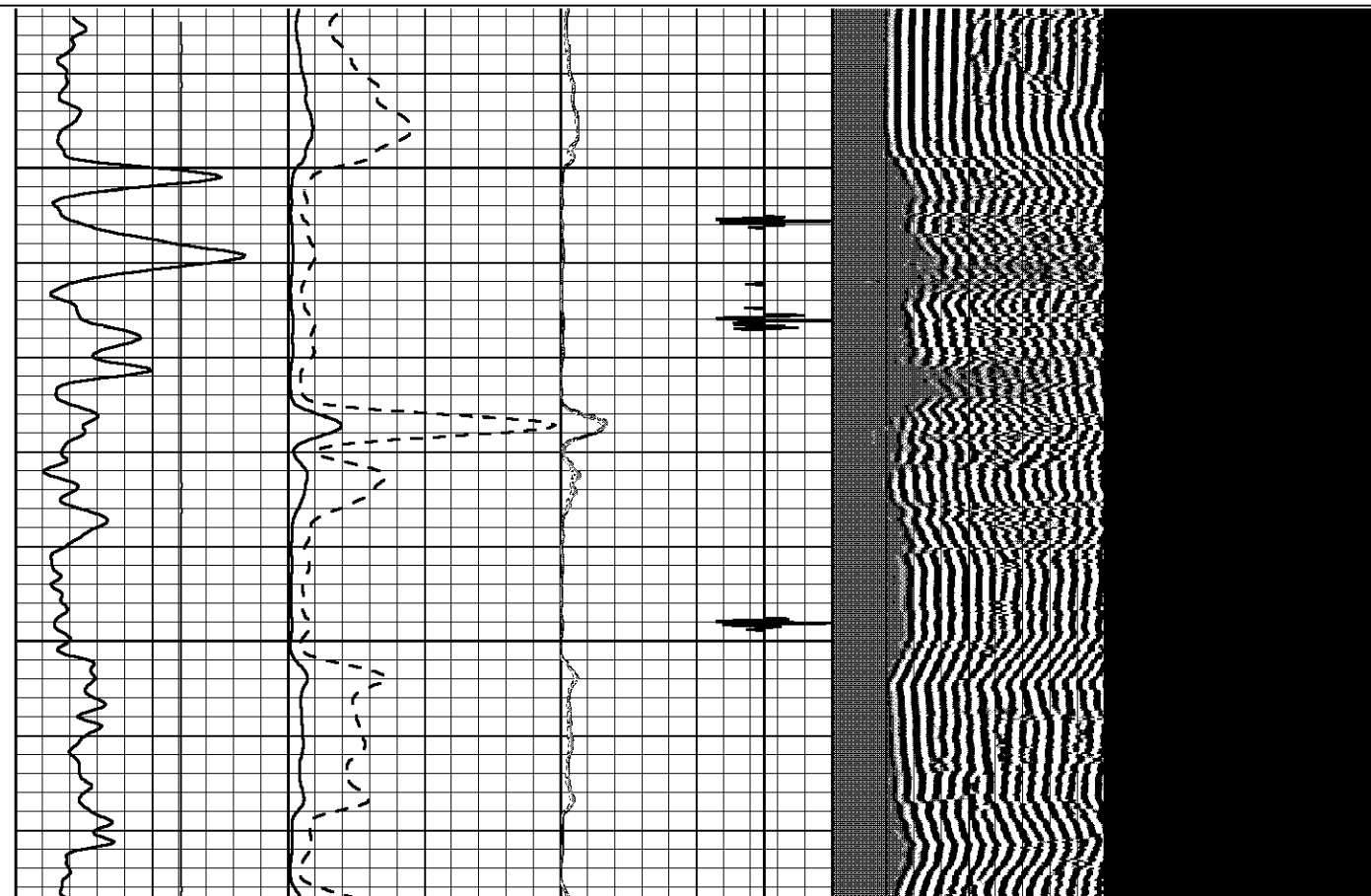
# Repeat Section

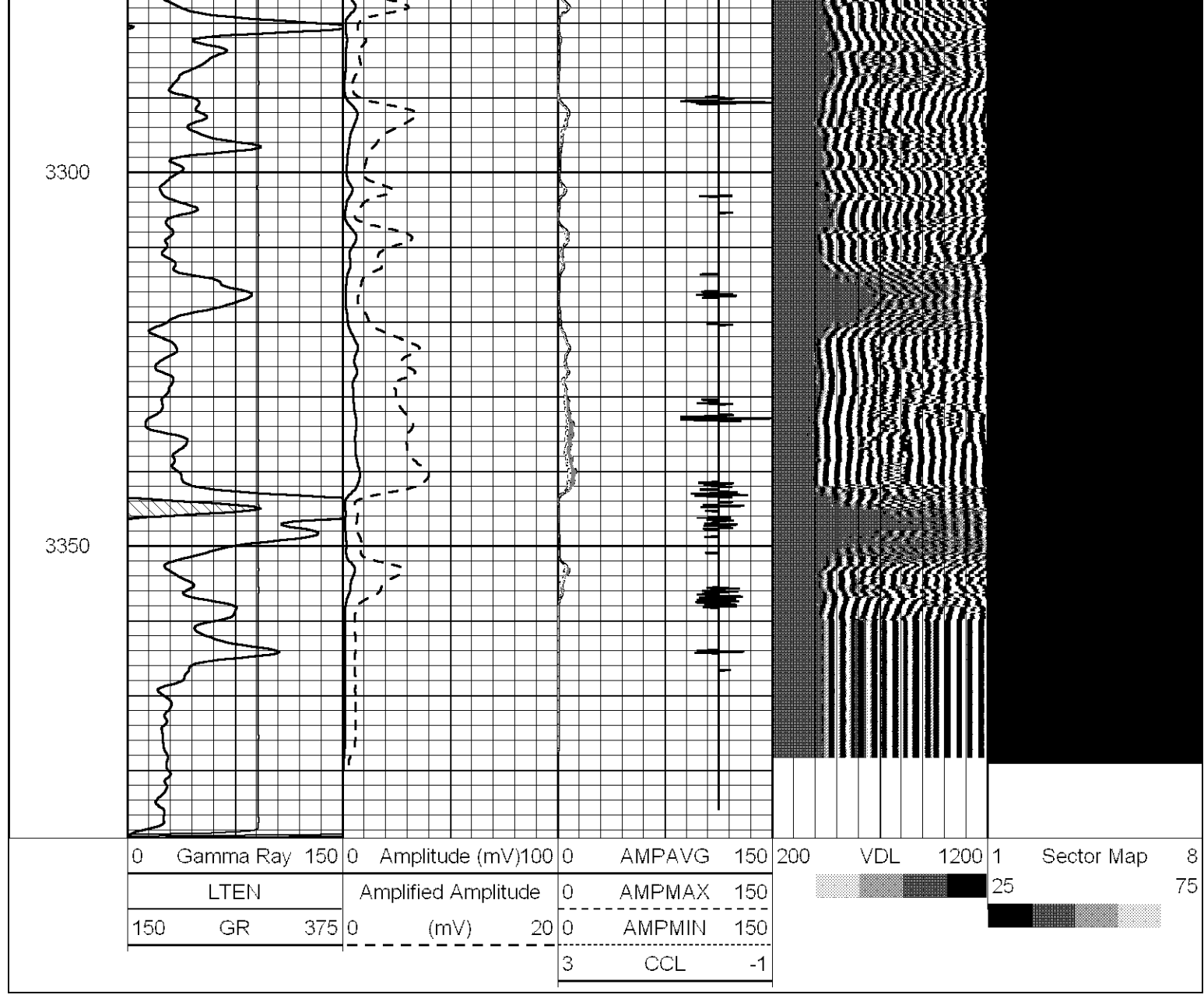
Database File: russelloilsteine1-32.db  
 Dataset Pathname: sgrcbl/pass2.1  
 Presentation Format: scbl  
 Dataset Creation: Mon Sep 20 16:04:36 2010 by Calc Std Casedhole 09061  
 Charted by: Depth in Feet scaled 1:240

0	Gamma Ray	150	0	Amplitude (mV)	100	0	AMPAVG	150	200	VDL	1200	1	Sector Map	8
	LTEN			Amplified Amplitude		0	AMPMAX	150				25		75
150	GR	375	0	(mV)	20	0	AMPMIN	150						
						3	CCL	-1						

3200

3250

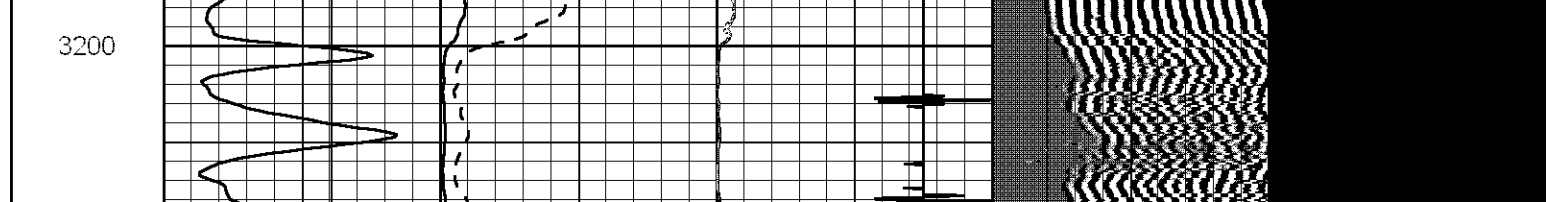
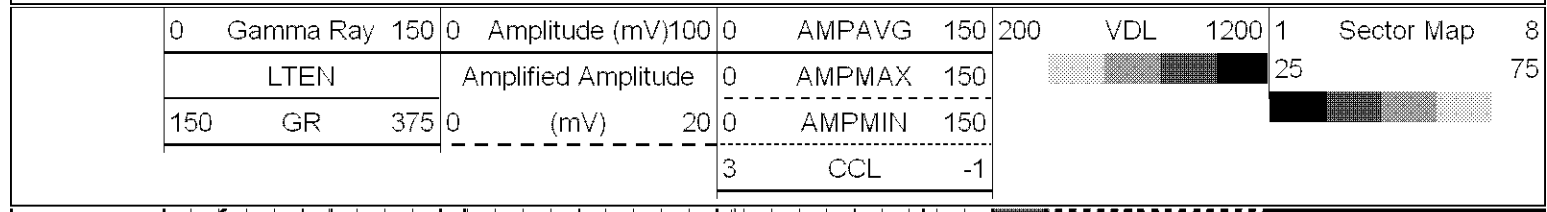




**LOG-TECH**

# Repeat Section

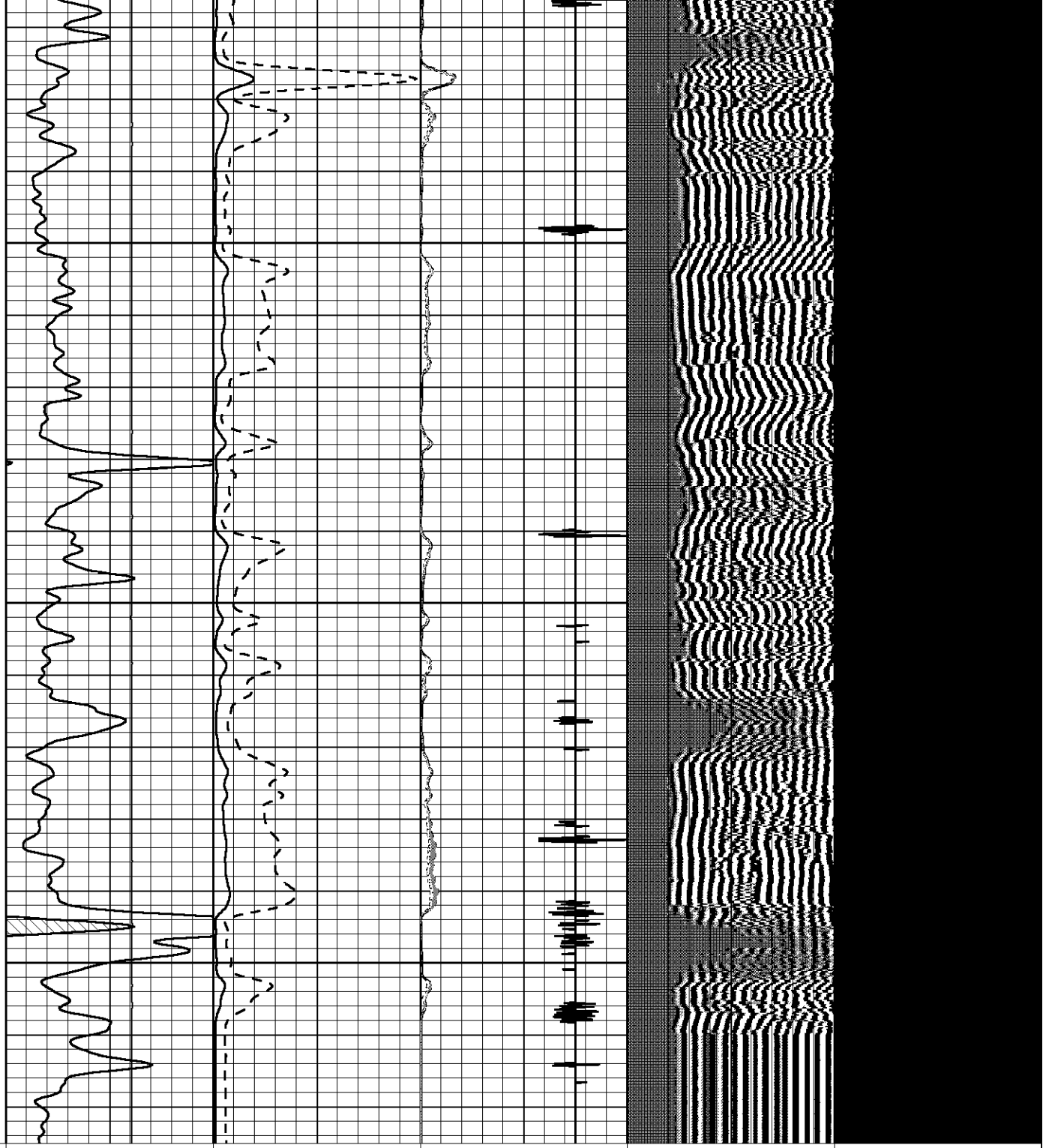
Database File: russelloilsteinle1-32.db  
 Dataset Pathname: sgrcbl/pass2.1  
 Presentation Format: scbl  
 Dataset Creation: Mon Sep 20 16:04:36 2010 by Calc Std Casedhole 09061  
 Charted by: Depth in Feet scaled 1:240



3250

3300

3350



0	Gamma Ray	150	0	Amplitude (mV)	100	0	AMPAVG	150	200	VDL	1200	1	Sector Map	8
	LTEN			Amplified Amplitude		0	AMPMAX	150				25		75
150	GR	375	0	(mV)	20	0	AMPMIN	150						
						3	CCL	-1						