



DIGITAL LOG (785) 625-3858

Microresistivity Log

API No.	15-167-23,658-00-00		
Company	Russell Oil, Inc.	Location	990' FNL & 1,730' FEL
Well	Steinle No. 1-32	County	Russell
Field	Nuss	State	Kansas
Sec:	32	Twp:	15S
		Rge:	14W
Other Services	CNL/CDL DIL		

Permanent Datum	Ground Level	Elevation	1921
Log Measured From	Kelly Bushing	7	Ft. Above Perm. Datum
Drilling Measured From	Kelly Bushing		
		K.B.	1928
		D.F.	
		G.L.	1921

Date	9/15/2010
Run Number	Two
Depth Driller	3410
Depth Logger	3403
Bottom Logged Interval	3402
Top Log Interval	2600
Casing Driller	8.625 @ 929
Casing Logger	929
Bit Size	7.875
Type Fluid in Hole	Chemical
Salinity, ppm CL	11,500
Density / Viscosity	9.0   42
pH / Fluid Loss	10.5   14.2
Source of Sample	Flowline
Rm @ Meas. Temp	.22 @ 74
Rmf @ Meas. Temp	.17 @ 74
Rmc @ Meas. Temp	.30 @ 74
Source of Rmf / Rmc	Charts
Rm @ BHT	.15 @ 110
Operating Rig Time	3 Hours
Max Rec. Temp. F	110
Equipment Number	10
Location	Hays
Recorded By	J. Long
Witnessed By	Kevin Bailey

<<< Fold Here >>>

All interpretations are opinions based on inferences from electrical or other measurements and we cannot and do not guarantee the accuracy or correctness of any interpretation, and we shall not, except in the case of gross or willful negligence on our part, be liable or responsible for any loss, costs, damages, or expenses incurred or sustained by anyone resulting from any interpretation made by any of our officers, agents or employees. These interpretations are also subject to our general terms and conditions set out in our current Price Schedule.

Comments

Thank you for using Log-Tech, Inc.  
(785) 625-3858

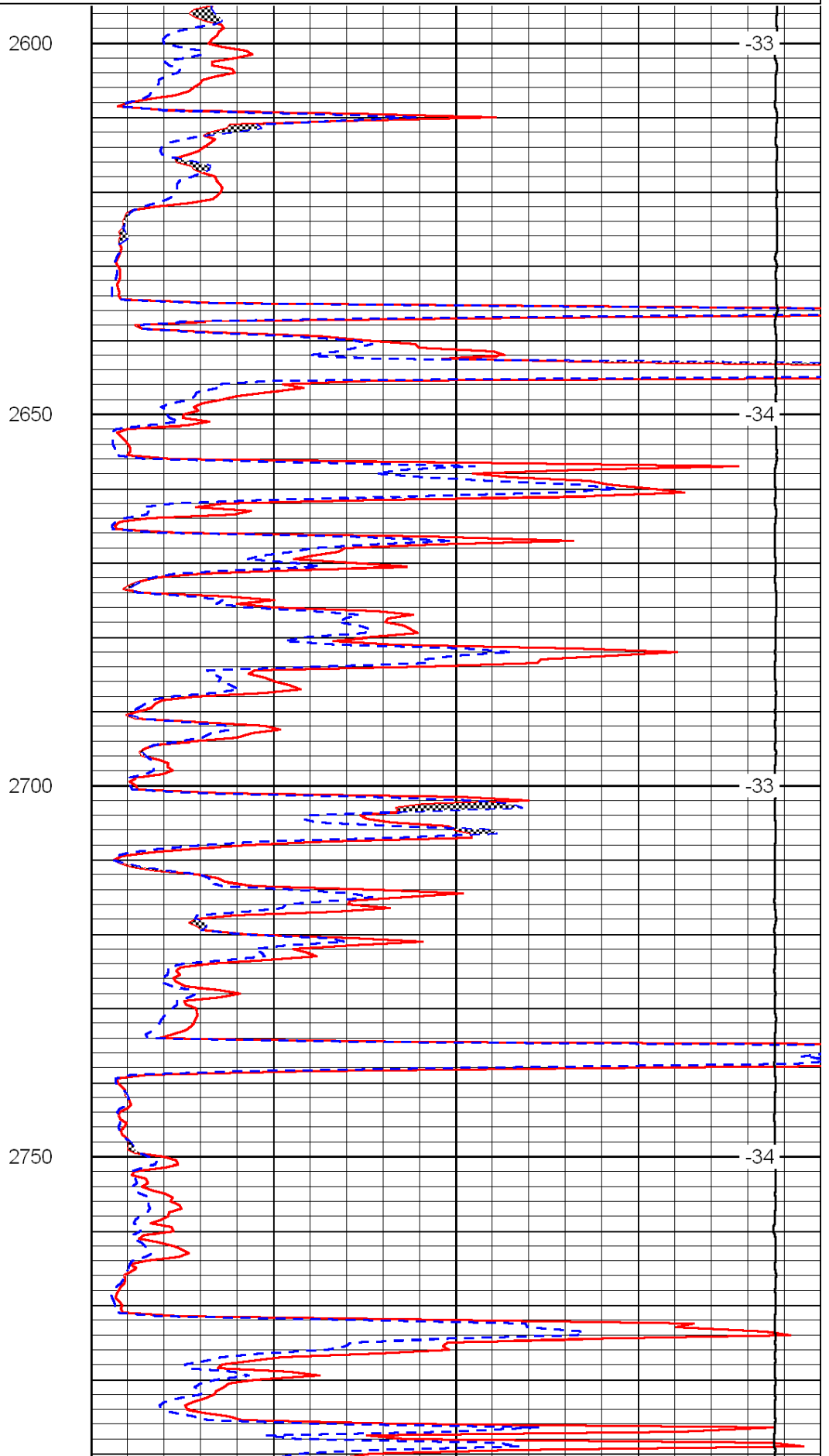
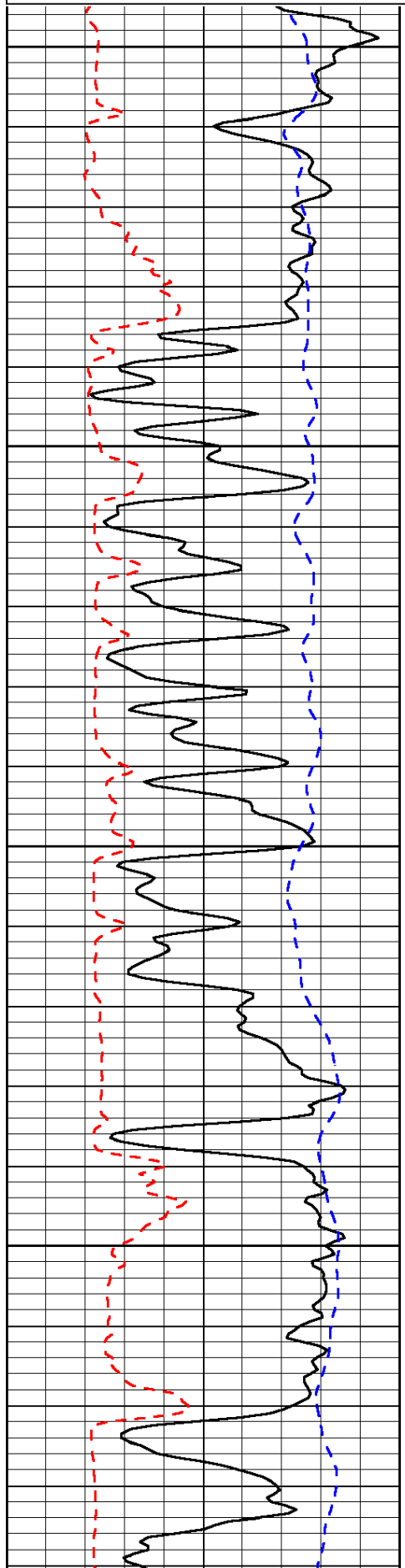
Hoisington (Highway 181 and Highway 4), 12 North to Michaelis Rd, 2 3/4 West, South Into

Database File: c:\warrior\data\russell\_steinle no. 1-32\russelloilhd.db  
 Dataset Pathname: dil/russtck  
 Presentation Format: micro  
 Dataset Creation: Wed Sep 15 11:49:43 2010  
 Charted by: Depth in Feet scaled 1:240

0	Gamma Ray	150
6	Micro Log Caliper (GAPI)	16
-200	SP (mV)	0

0	Micro Inverse 1 X 1	40
0	Micro Normal 2"	40
15000	Line Weight	0

LSPD



2600

2650

2700

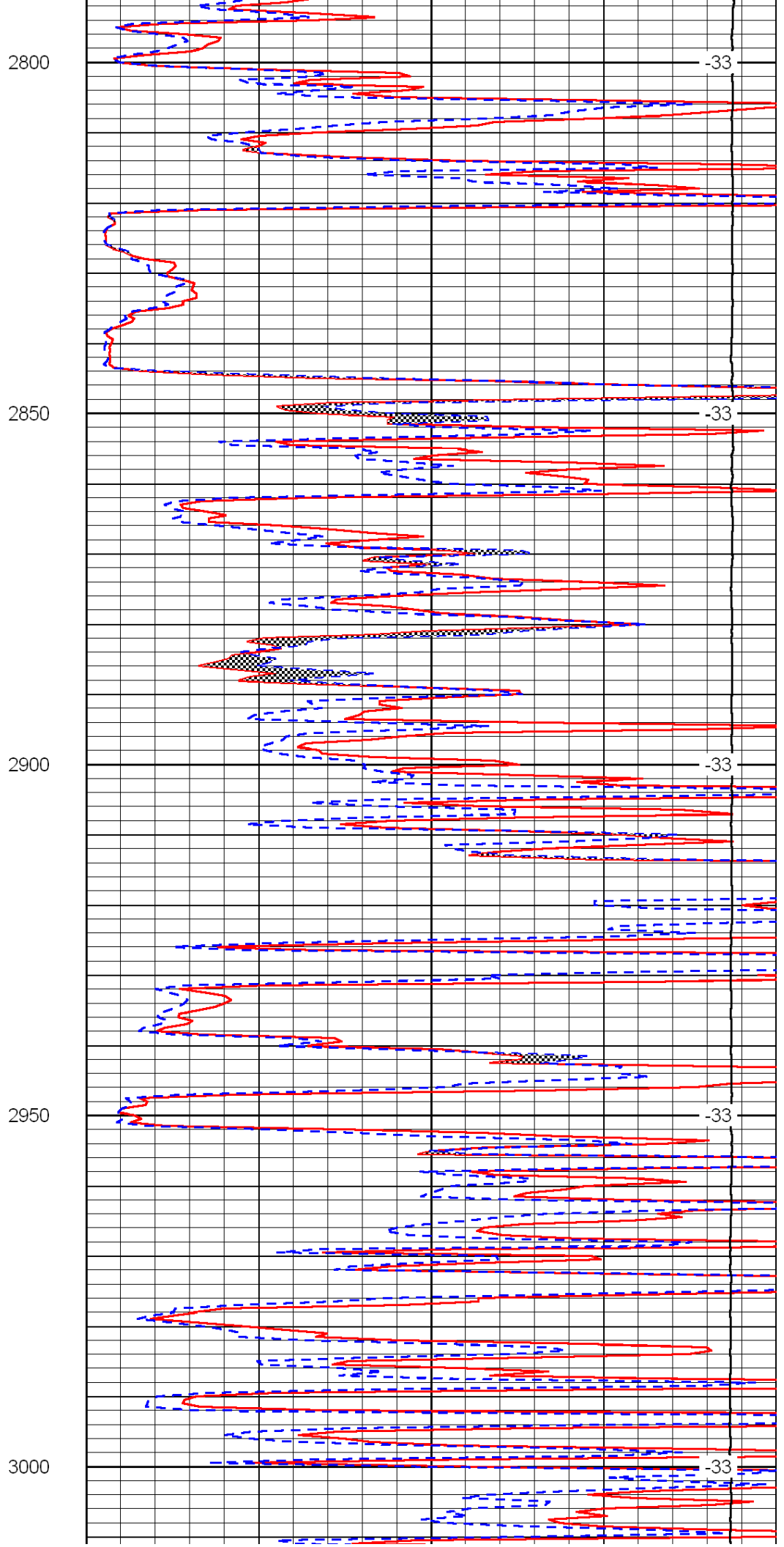
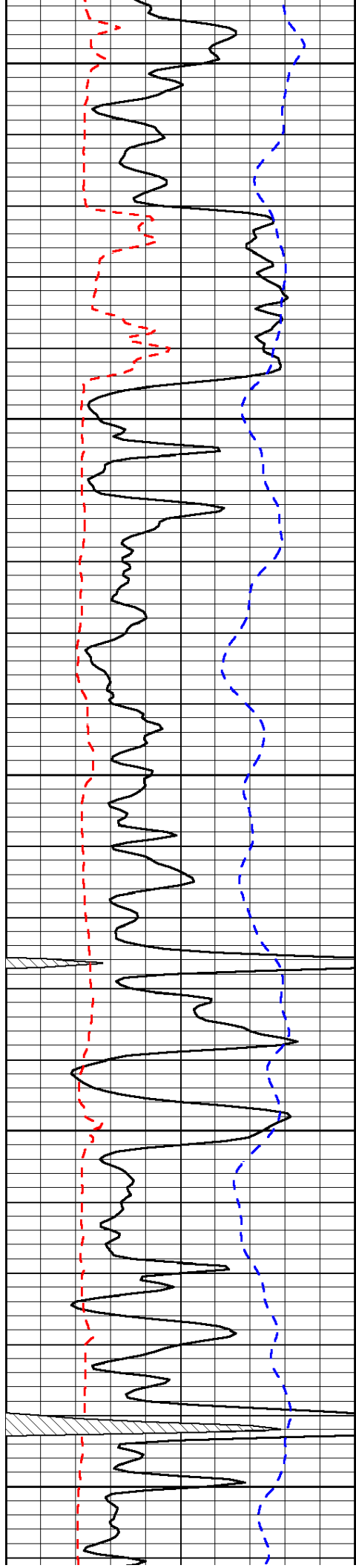
2750

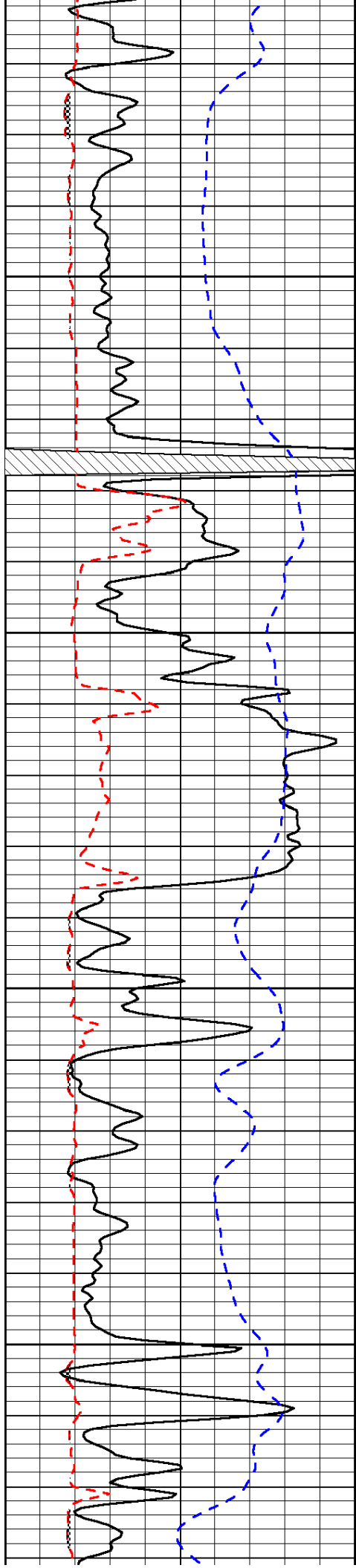
-33

-34

-33

-34



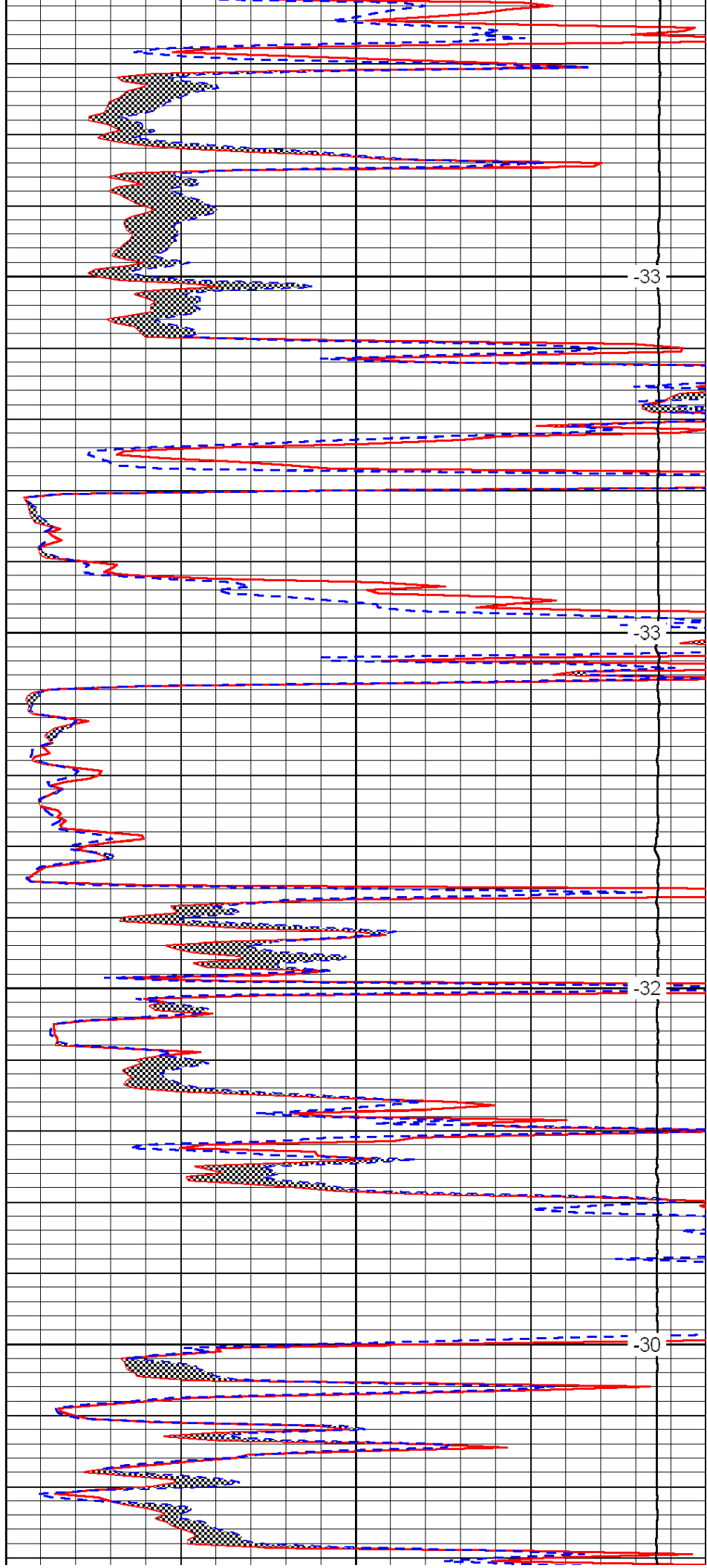


3050

3100

3150

3200

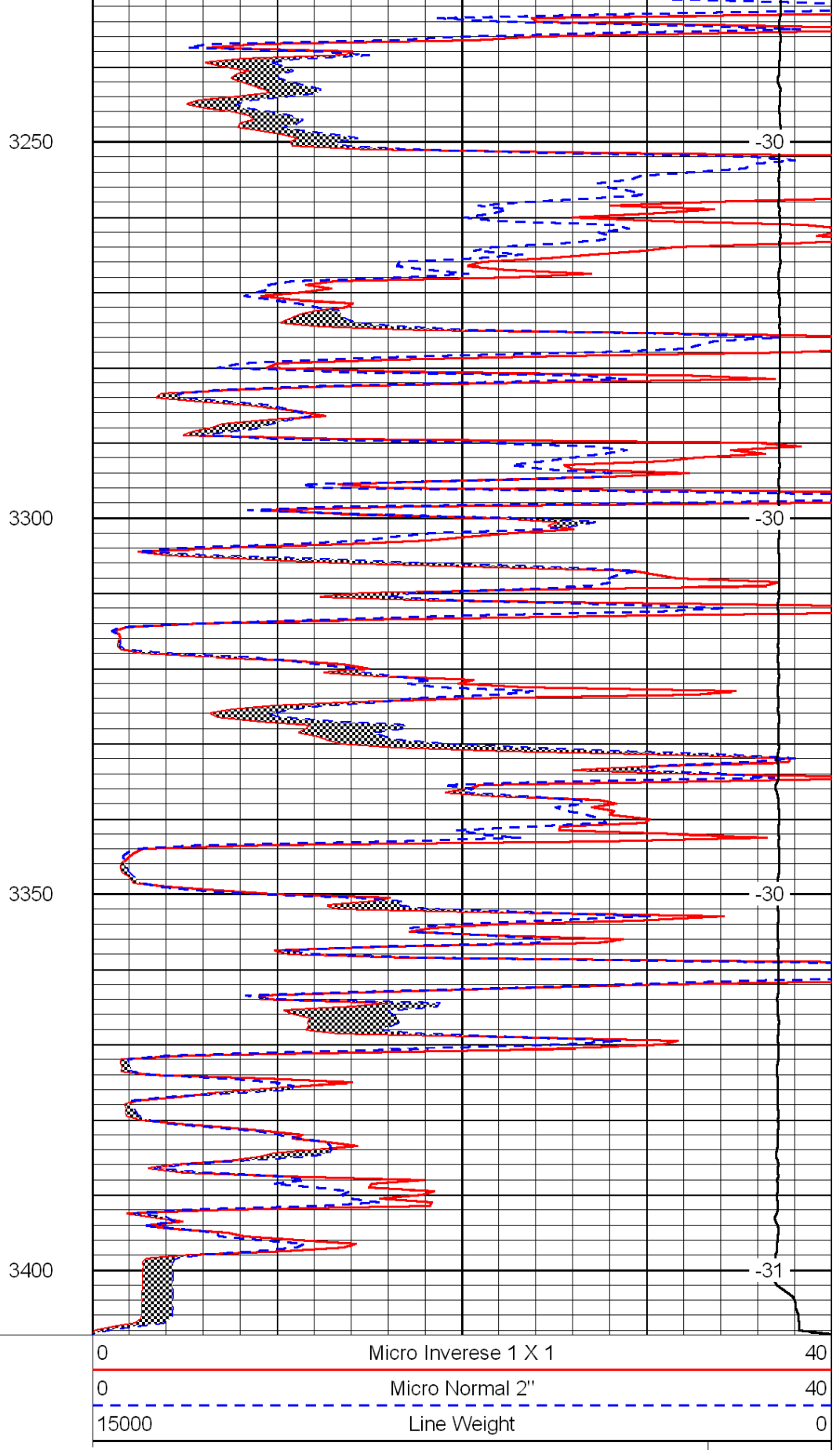
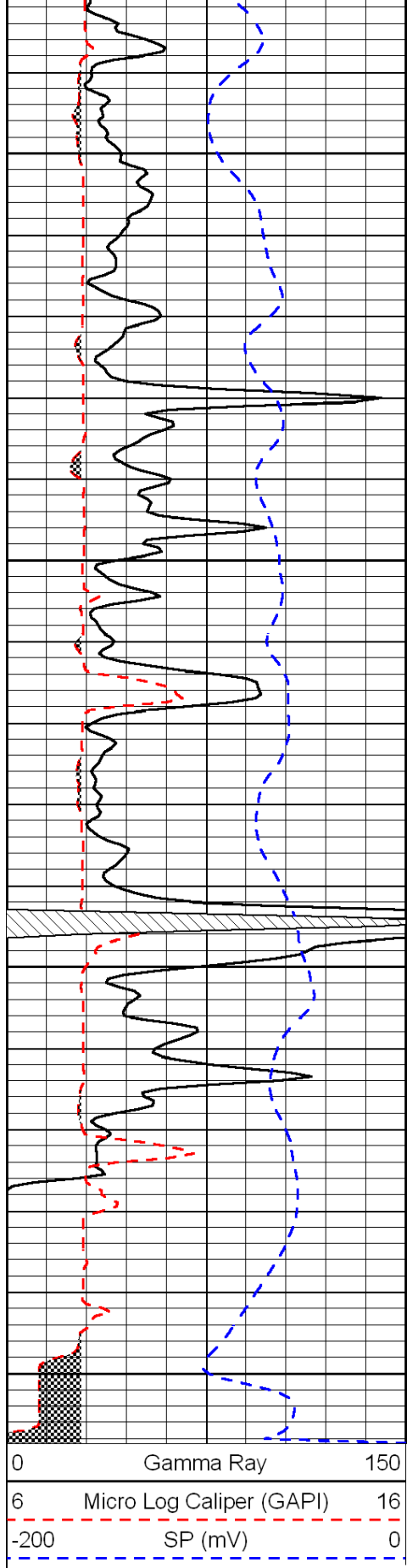


-33

-33

-32

-30



LSPD