



SUPERIOR
Hays,
Kansas

MICRO
LOG

Company LOTUS OPERATING CO., LLC.
Well KOPPITZ #1
Field STRANATHAN
County BARBER
State KANSAS

Company LOTUS OPERATING COMPANY, LLC
Well KOPPITZ #1
Field STRANATHAN
County BARBER State KANSAS

Location: API # : 15-007-23565-0000
900' FNL & 600' FWL
SEC 2 TWP 35S RGE 12W
Permanent Datum GROUND LEVEL Elevation 1391
Log Measured From KELLY BUSHING 13' A.G.L.
Drilling Measured From KELLY BUSHING
Other Services
CDL/CNL/PE
DIL/SON
Elevation
K.B. 1404
D.F. 1402
G.L. 1391

Date	8-5-10
Run Number	TWO
Depth Driller	5200
Depth Logger	5203
Bottom Logged Interval	5185
Top Log Interval	3700
Casing Driller	10 3/4" @ 260'
Casing Logger	260
Bit Size	7 7/8
Type Fluid in Hole	CHEMICAL MUD
Density / Viscosity	9.4/46
pH / Fluid Loss	10.0/10.4
Source of Sample	FLOWLINE
Rin @ Meas. Temp	.70 @ 97F
Rmf @ Meas. Temp	.52 @ 97
Rmc @ Meas. Temp	.84 @ 97F
Source of Rmf / Rmc	MEASURED
Rin @ BHT	.53 @ 126F
Time Circulation Stopped	2 HOURS
Time Logger on Bottom	
Maximum Recorded Temperature	126F
Equipment Number	680
Location	HAYS, KS.
Recorded By	JASON CAPPELLUCCI
Witnessed By	TIM HELLMAN

<<< Fold Here >>>

All interpretations are opinions based on inferences from electrical or other measurements and we cannot and do not guarantee the accuracy or correctness of any interpretation, and we shall not, except in the case of gross or willful negligence on our part, be liable or responsible for any loss, costs, damages, or expenses incurred or sustained by anyone resulting from any interpretation made by any of our officers, agents or employees. These interpretations are also subject to our general terms and conditions set out in our current Price Schedule.

Comments

THANK YOU FOR USING SUPERIOR WELL SERVICE (785) 628-6395
DIRECTIONS
MEDICINE LODGE KS. - S. TO MM 8 (RATTLESNAKE TRAIL) - 1 W. - 1 S.
1 W. - S. INTO

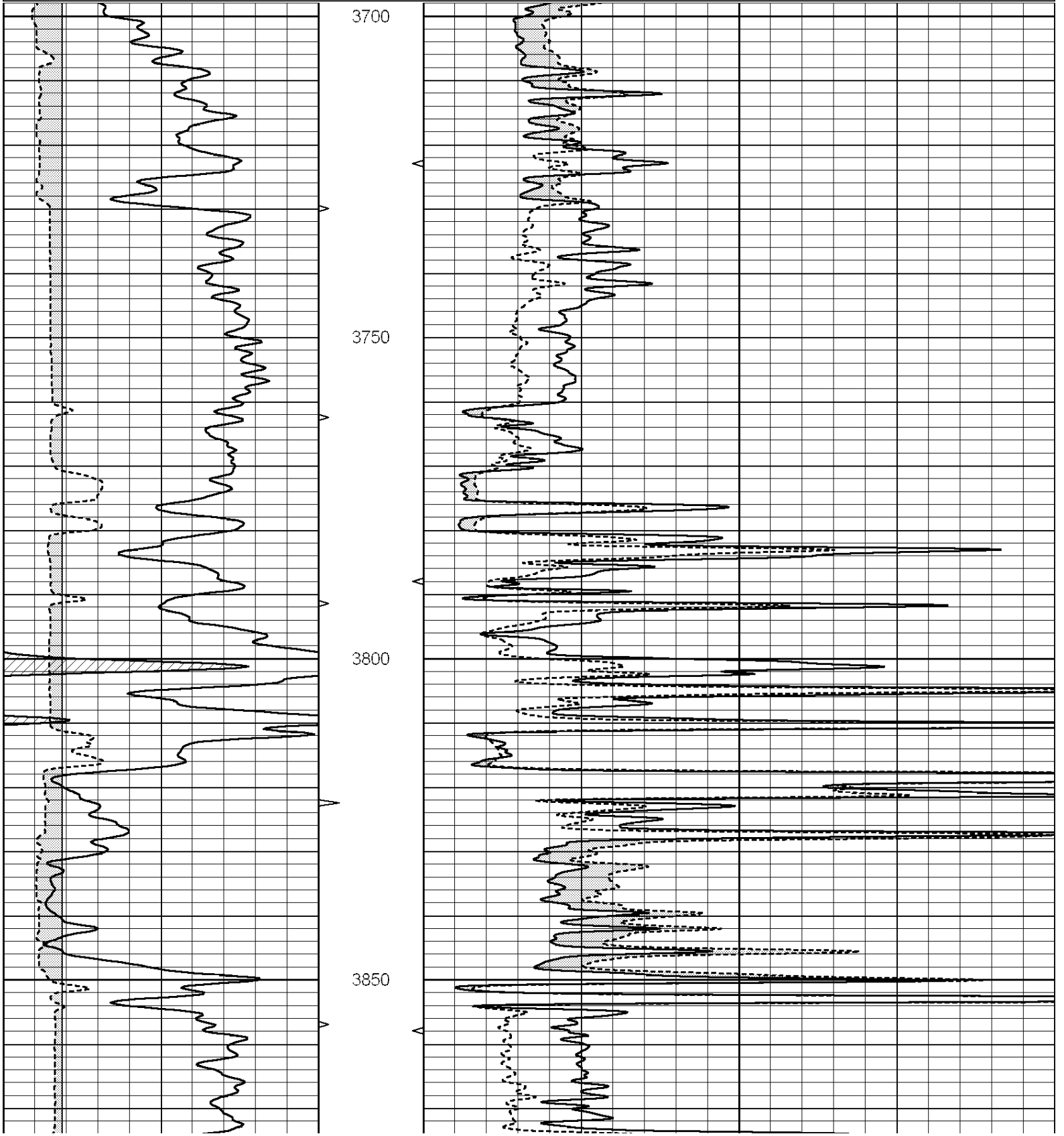


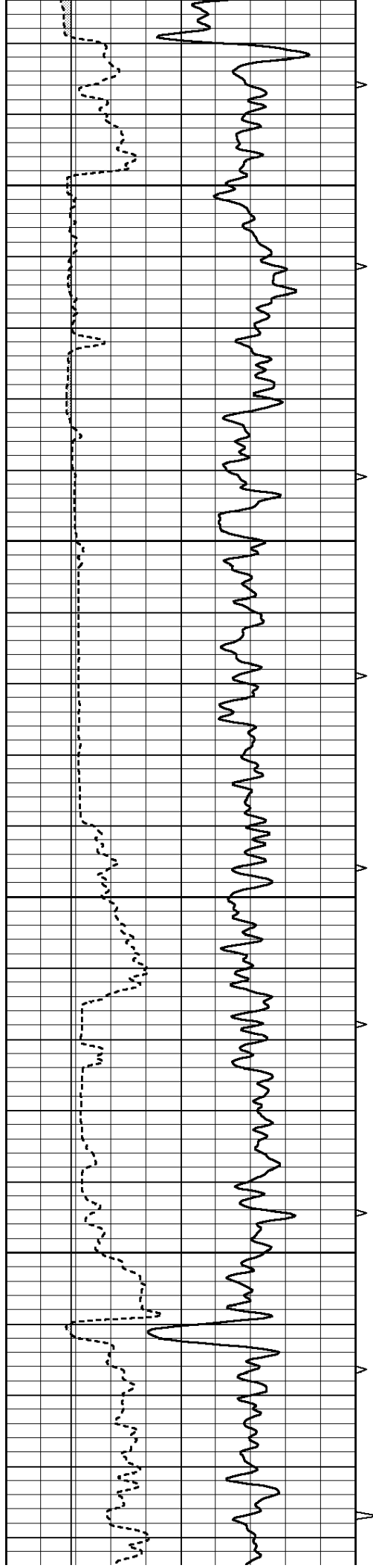
SUPERIOR
Hays,
Kansas

MAIN SECTION

Database File: 005422pe.db
 Dataset Pathname: pass6.1
 Presentation Format: _micro
 Dataset Creation: Thu Aug 05 14:59:15 2010 by Calc Open-Cased 090629
 Charted by: Depth in Feet scaled 1:240

0	GAMMA RAY (GAPI)	150	ABHV	0	MEL1.5 (Ohm-m)	40
6	CALIPER (in)	16	10 (ft3)	0	MEL2.0 (Ohm-m)	40
			TBHV			
			0 (ft3)	10		



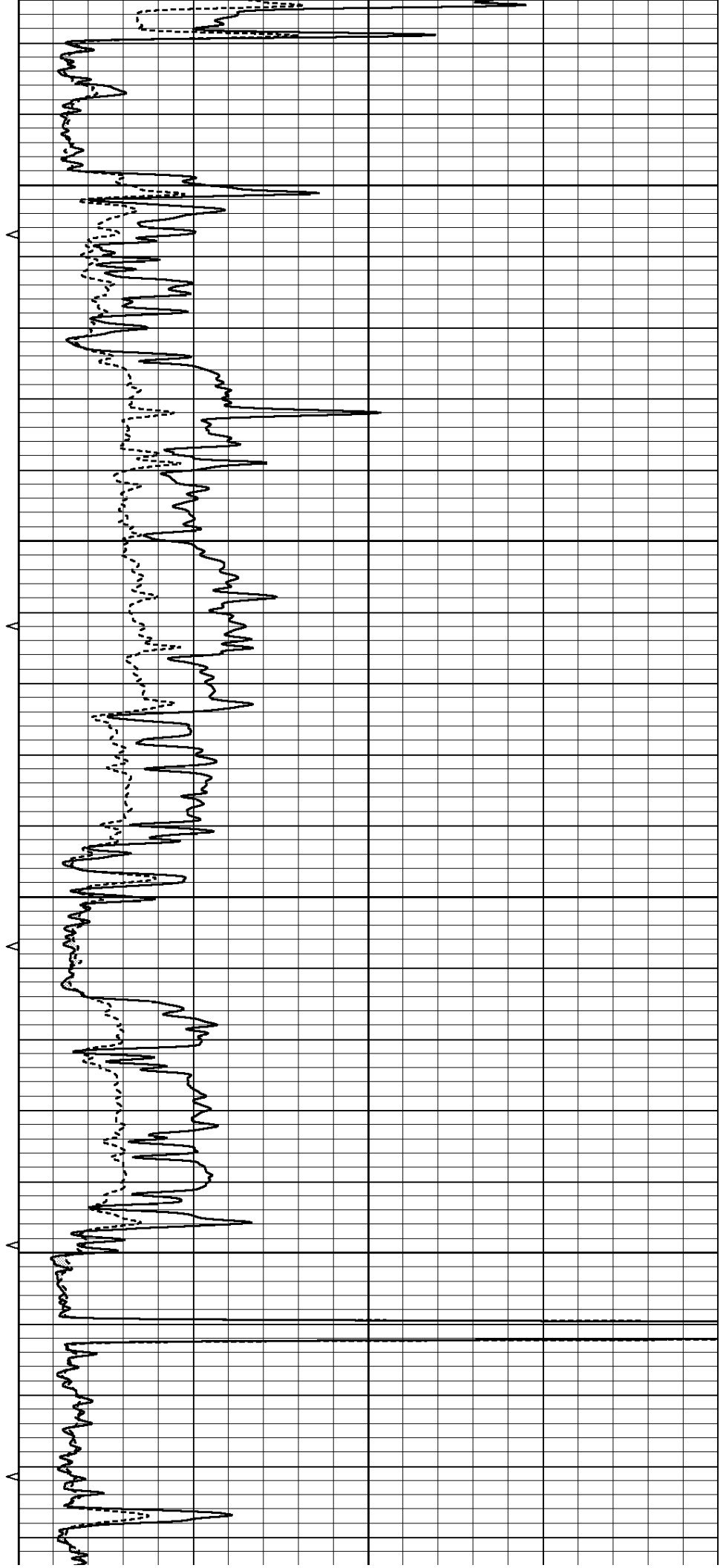


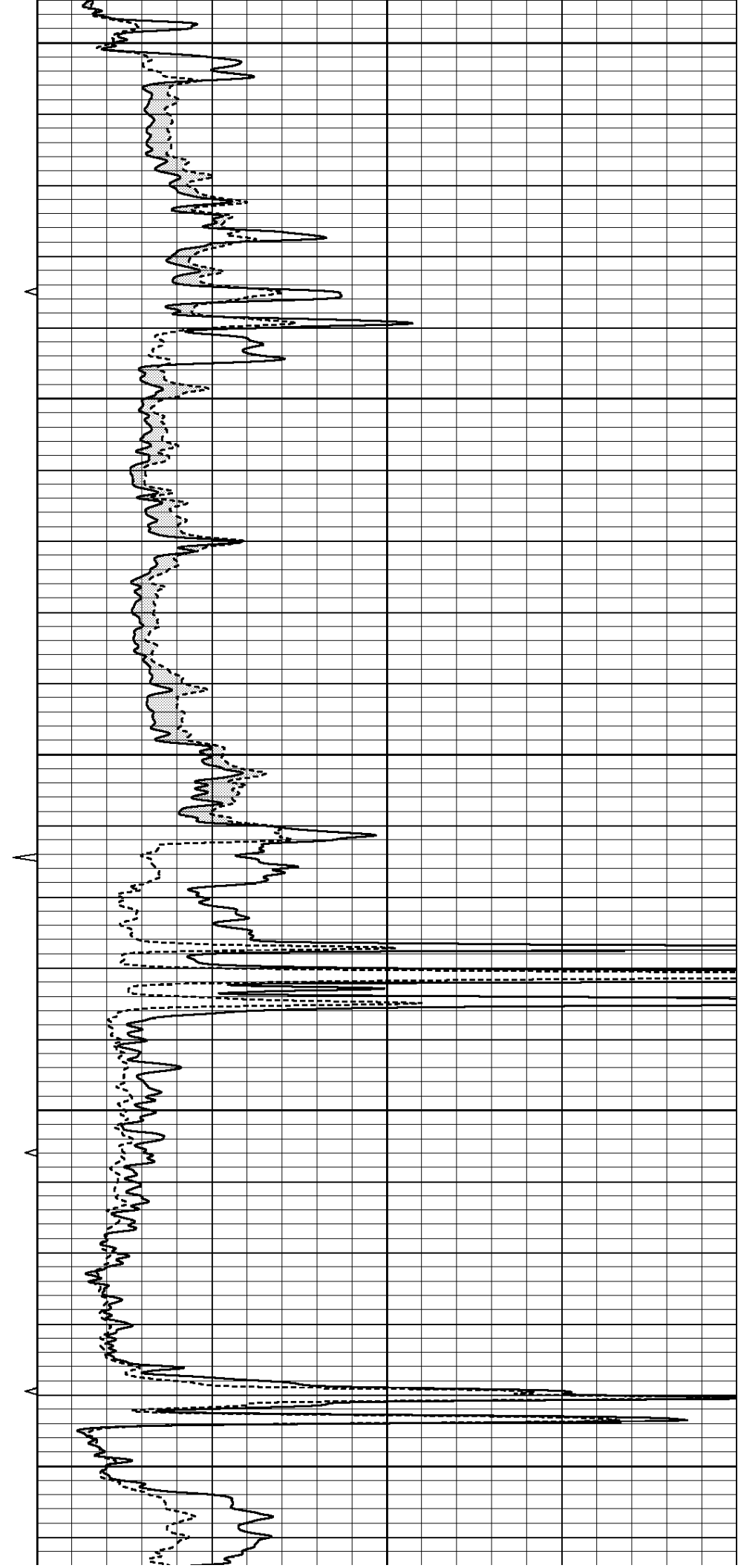
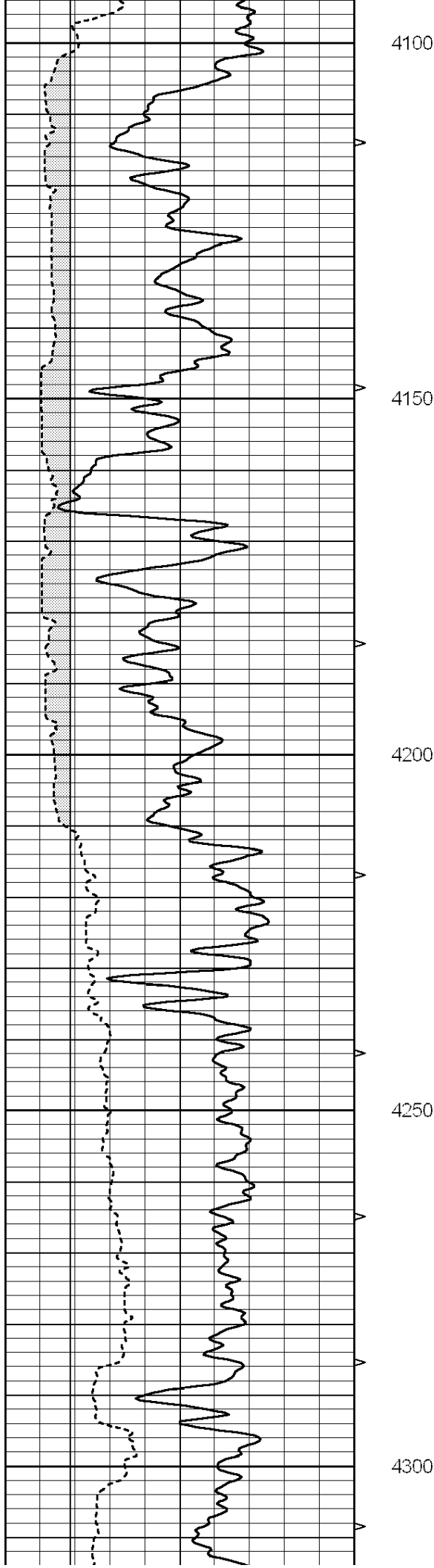
3900

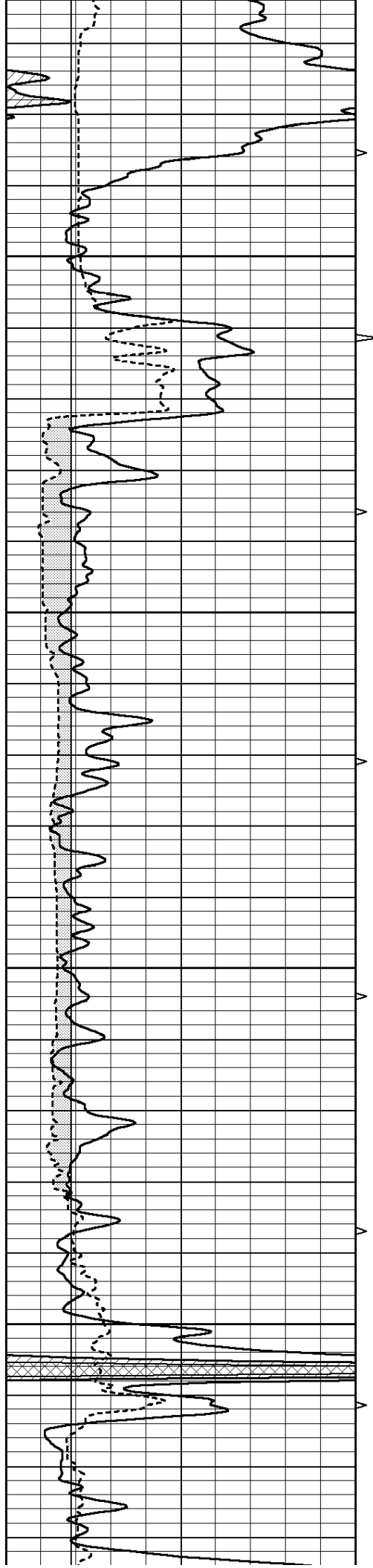
3950

4000

4050





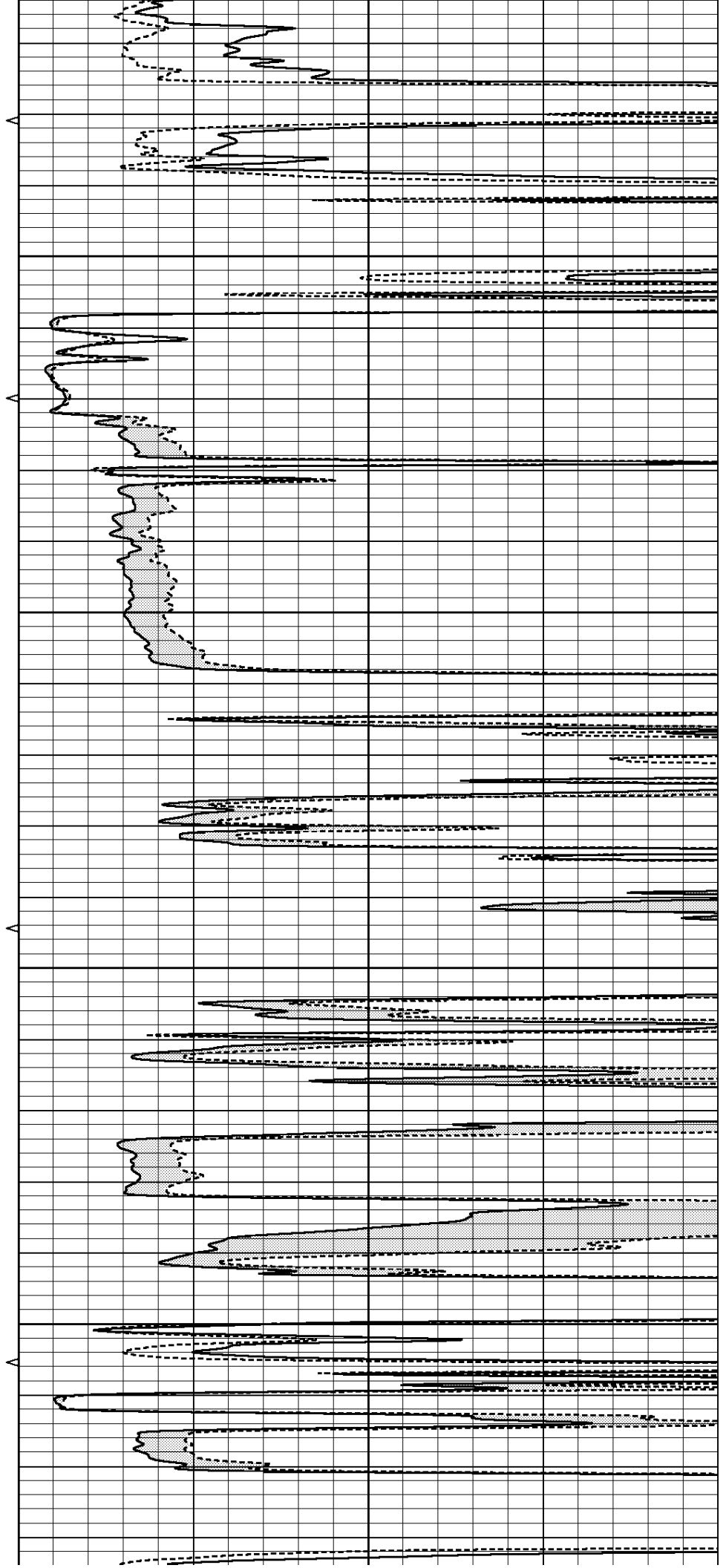


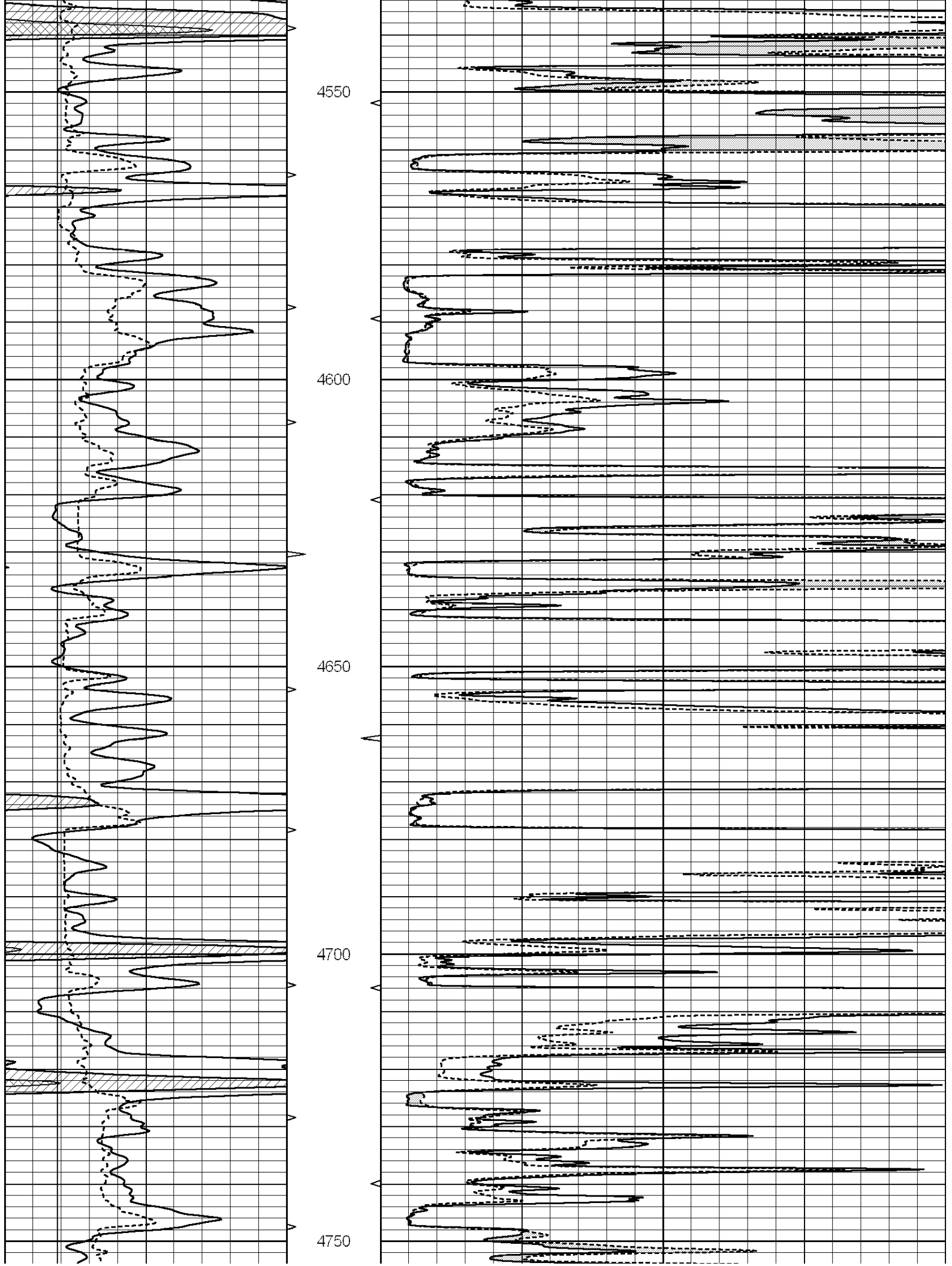
4350

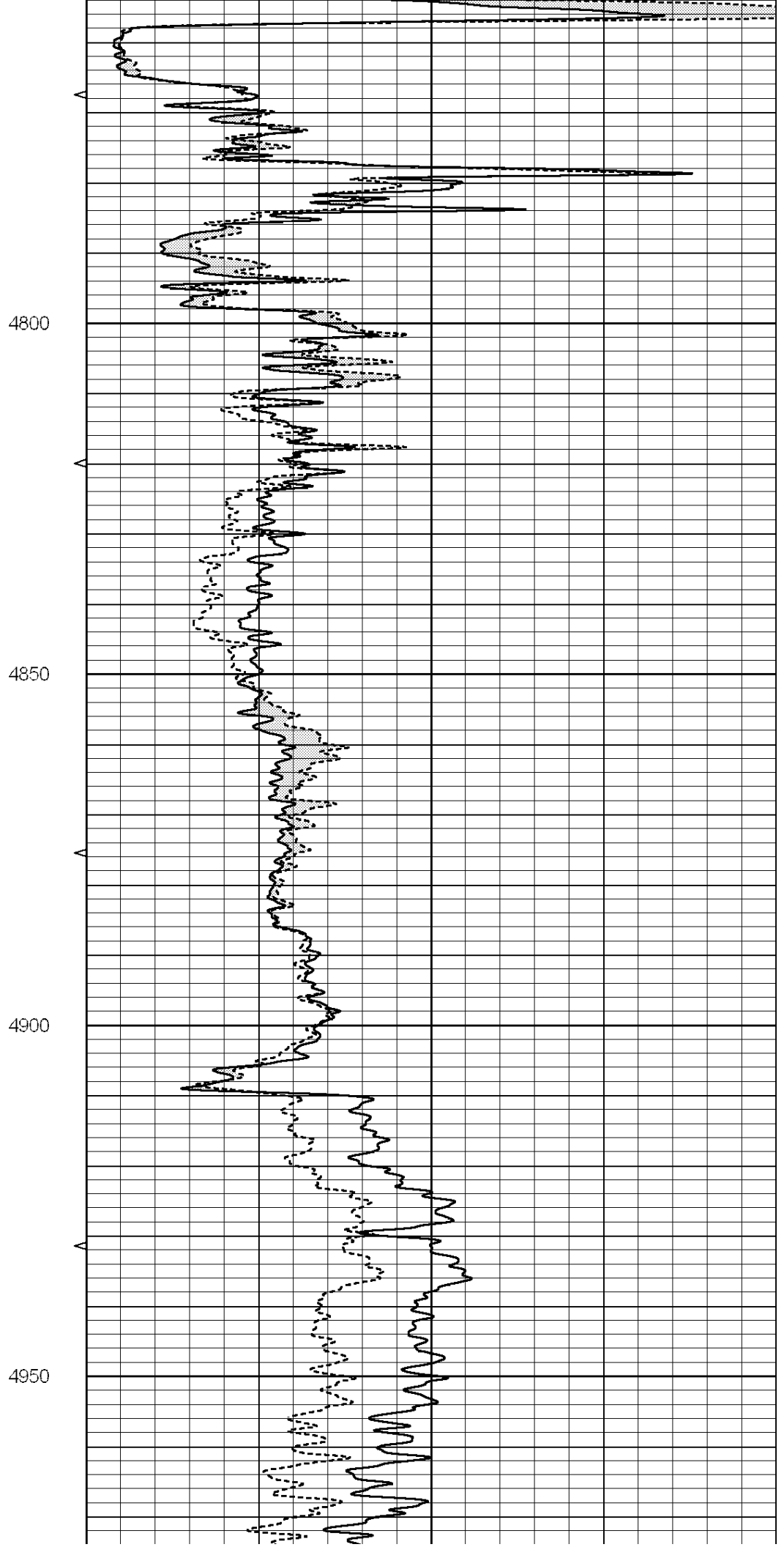
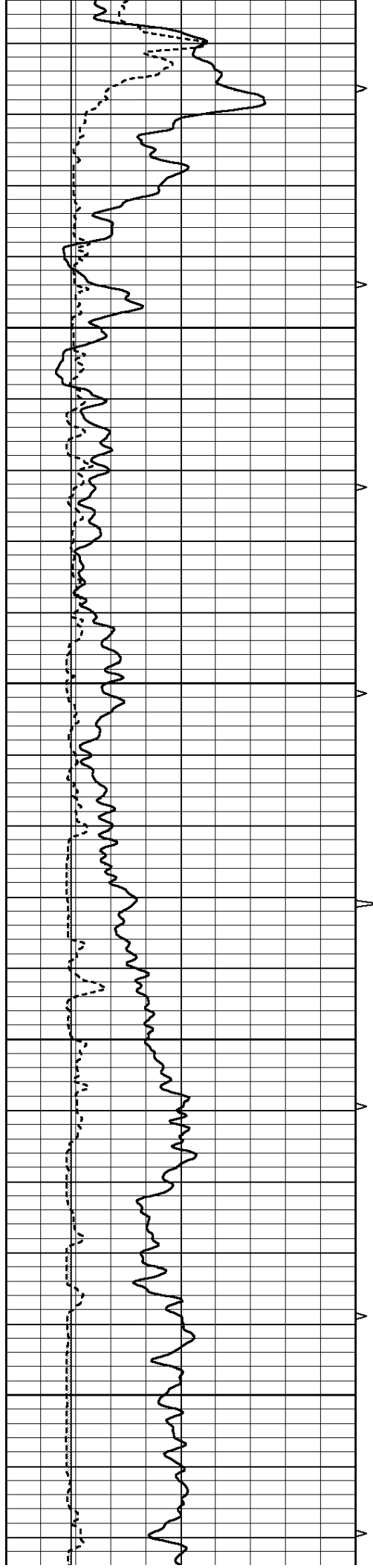
4400

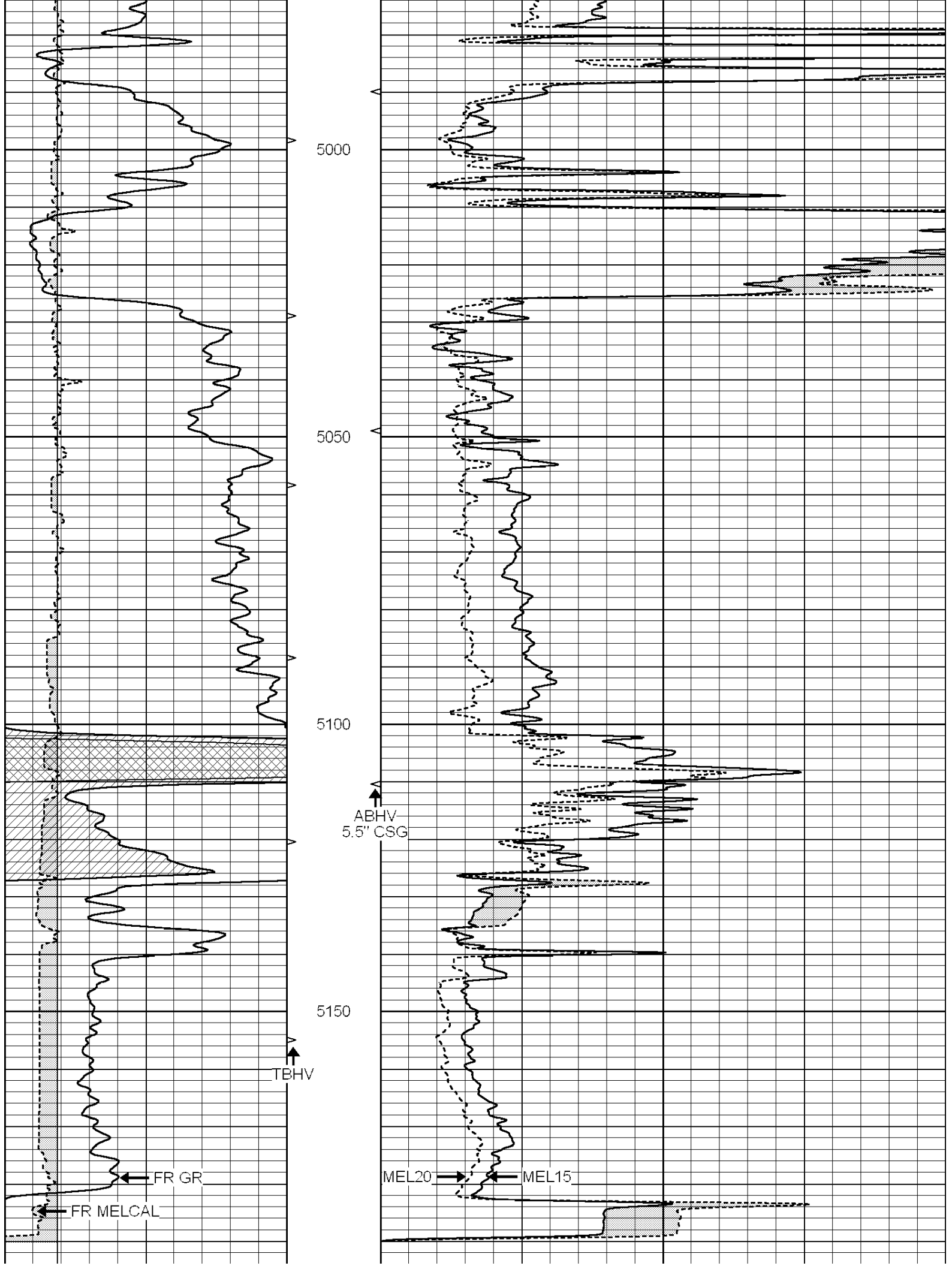
4450

4500









			5200 LTD 5203					
0	GAMMA RAY (GAPI)	150	ABHV	0	MEL1.5 (Ohm-m)	40		
6	CALIPER (in)	16	10 (ft3)	0	MEL2.0 (Ohm-m)	40		
			TBHV					
			0 (ft3) 10					

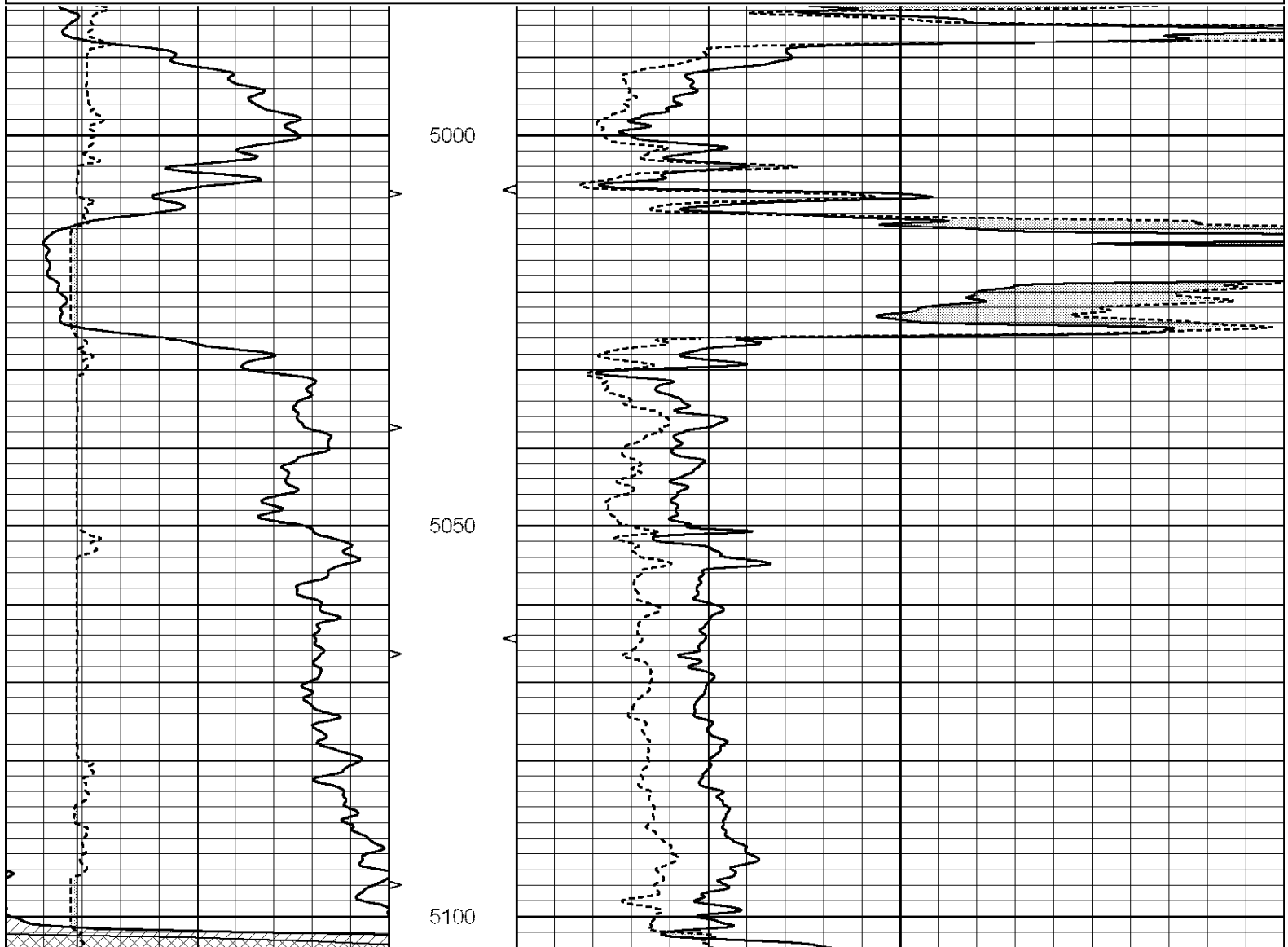


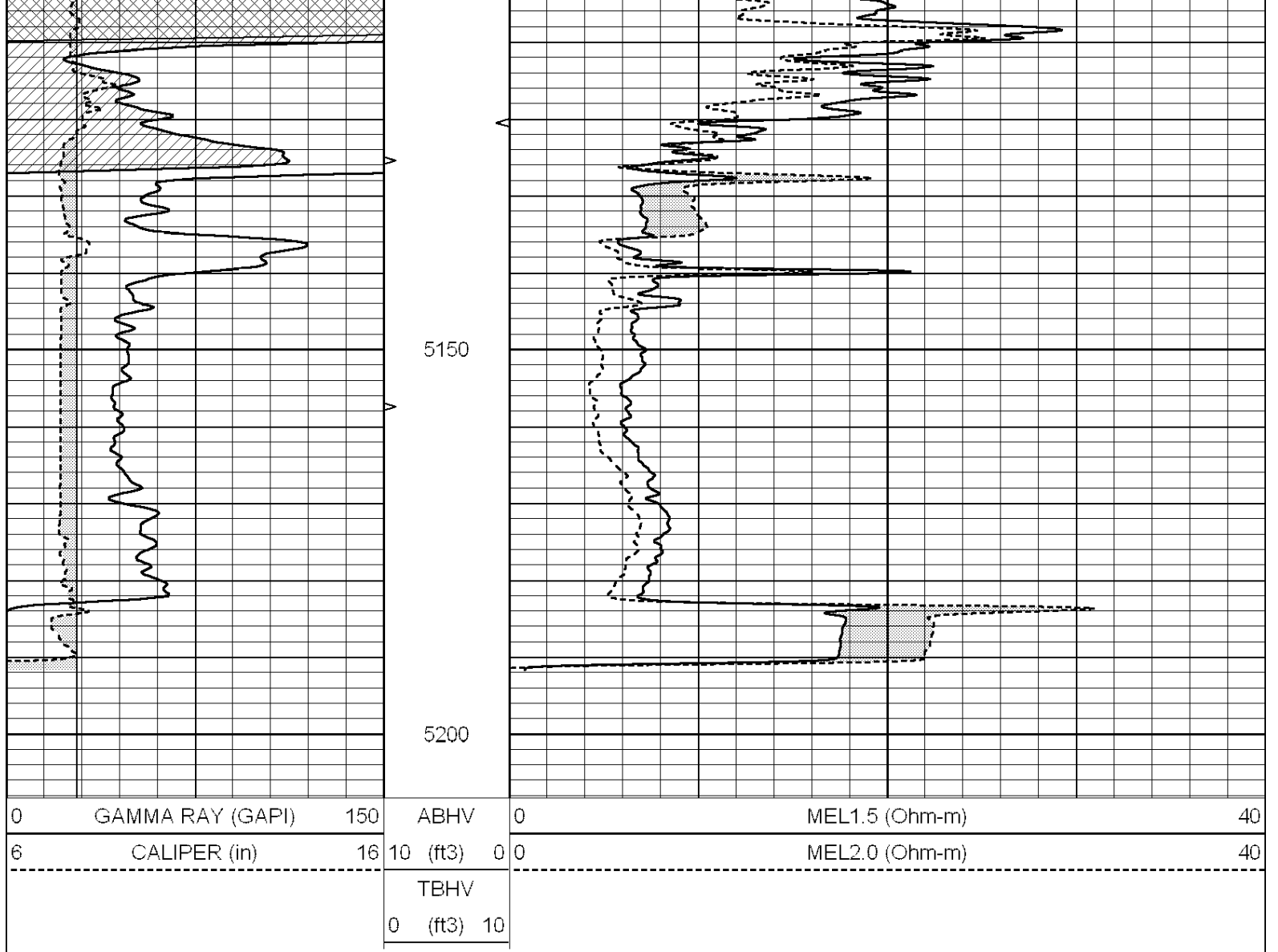
SUPERIOR
Hays,
Kansas

REPEAT SECTION

Database File: 005422pe.db
 Dataset Pathname: pass5.4
 Presentation Format: _micro
 Dataset Creation: Thu Aug 05 15:06:18 2010 by Calc Open-Cased 090629
 Charted by: Depth in Feet scaled 1:240

0	GAMMA RAY (GAPI)	150	ABHV	0	MEL1.5 (Ohm-m)	40		
6	CALIPER (in)	16	10 (ft3)	0	MEL2.0 (Ohm-m)	40		
			TBHV					
			0 (ft3) 10					





Calibration Report

Database File: 005422pe.db
 Dataset Pathname: pass5.4
 Dataset Creation: Thu Aug 05 15:06:18 2010 by Calc Open-Cased 090629

MICRO Calibration Report

Serial Number:	MICRO3	
Tool Model:	PROBE	
Performed:	Wed Jul 14 14:33:38 2010	
Caliper Calibration:	Gain=3.855	Offset=-8.039
References	Low Cal	High Cal
Readings	8.000	14.000
	4.005	5.562
1.5" Calibration:	Gain=150.000	Offset=0.800
References	Low Cal	High Cal
Readings	0.000	20.000
	0.006	0.223
2" Calibration:	Gain=150.000	Offset=-0.400
References	Low Cal	High Cal
Readings	0.000	20.000
	0.009	0.177

Gamma Ray Calibration Report

Serial Number:	GR6	
Tool Model:	OPEN	
Performed:	Wed Jul 14 14:14:30 2010	
Calibrator Value:	150.0	GAPI
Background Reading:	0.0	cps
Calibrator Reading:	276.0	cps
Sensitivity:	0.5335	GAPI/cps