



**Borehole Compensated
Sonic Log**

DIGITAL LOG (785) 625-3858

API No.	15-009-25,473-00-00
Company	RJM Company
Well	Jerry Beran No. 1
Field	Beran
County	Barton
State	Kansas
Location	NE NW NE 330' FNL & 1,650' FEL
Sec: 24	Twp: 17S Rge: 12W
Other Services	CNL/CDL MEL/DIL

Permanent Datum	Ground Level	Elevation 1829
Log Measured From	Kelly Bushing	7 Ft. Above Perm. Datum
Drilling Measured From	Kelly Bushing	
Date	9/22/2010	Elevation

Run Number	Two
Type Log	BHC Sonic
Depth Driller	3340
Depth Logger	3336
Bottom Logged Interval	3325
Top Logged Interval	300
Type Fluid In Hole	Chemical
Salinity, PPM CL	6000
Density	9.2
Level	Full
Max. Rec. Temp. F	109
Operating Rig Time	5 Hours
Equipment -- Location	10 Hays
Recorded By	J. Long
Witnessed By	Chris Hoffman

Borehole Record				Casing Record			
Run No.	Bit	From	To	Size	Wgt.	From	To
1	12.25	00	328	8.625	24#	00	328
2	7.875	328	3340				

<<< Fold Here >>>

All interpretations are opinions based on inferences from electrical or other measurements and we cannot and do not guarantee the accuracy or correctness of any interpretation, and we shall not, except in the case of gross or willful negligence on our part, be liable or responsible for any loss, costs, damages, or expenses incurred or sustained by anyone resulting from any interpretation made by any of our officers, agents or employees. These interpretations are also subject to our general terms and conditions set out in our current Price Schedule.

Comments

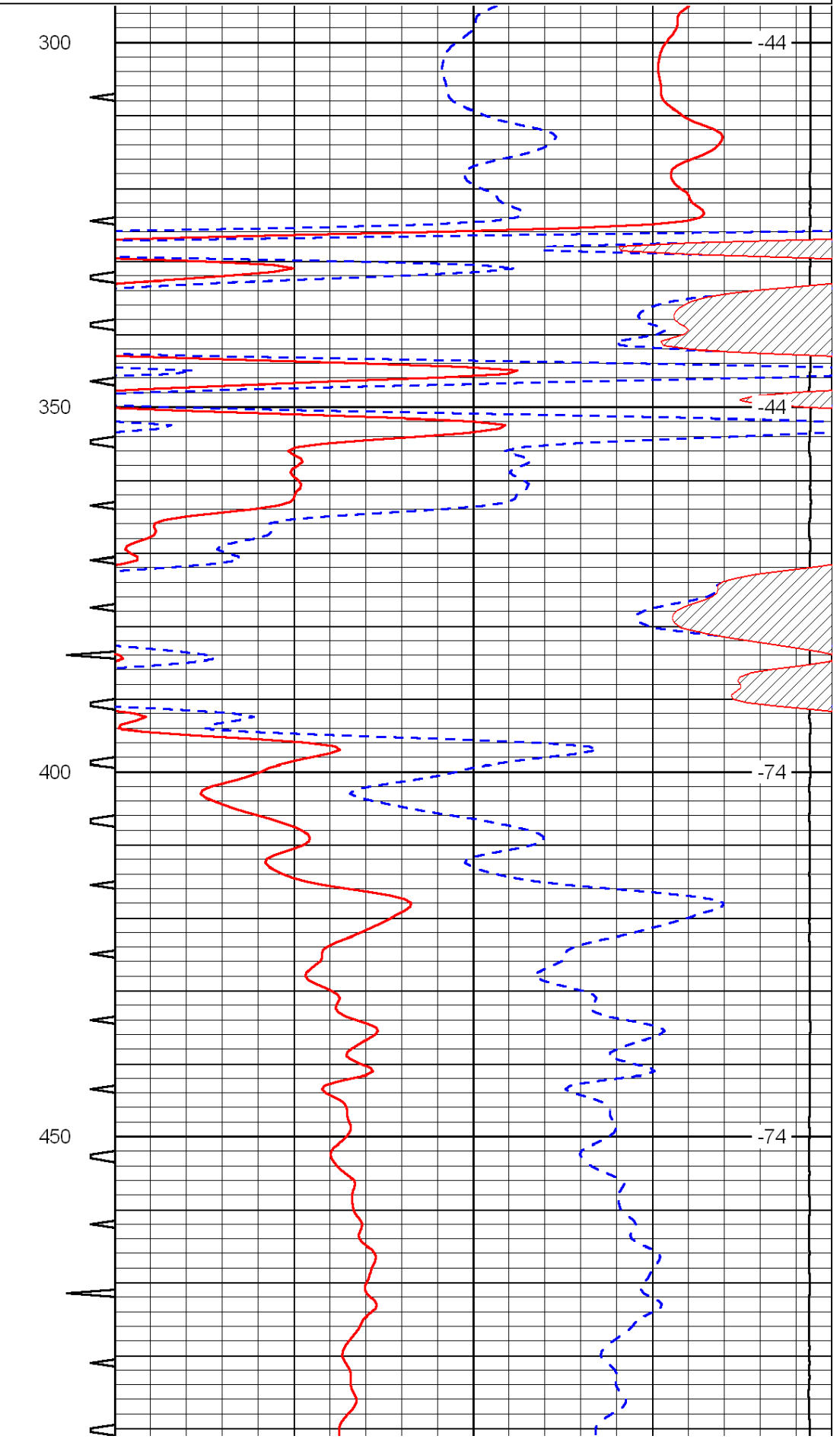
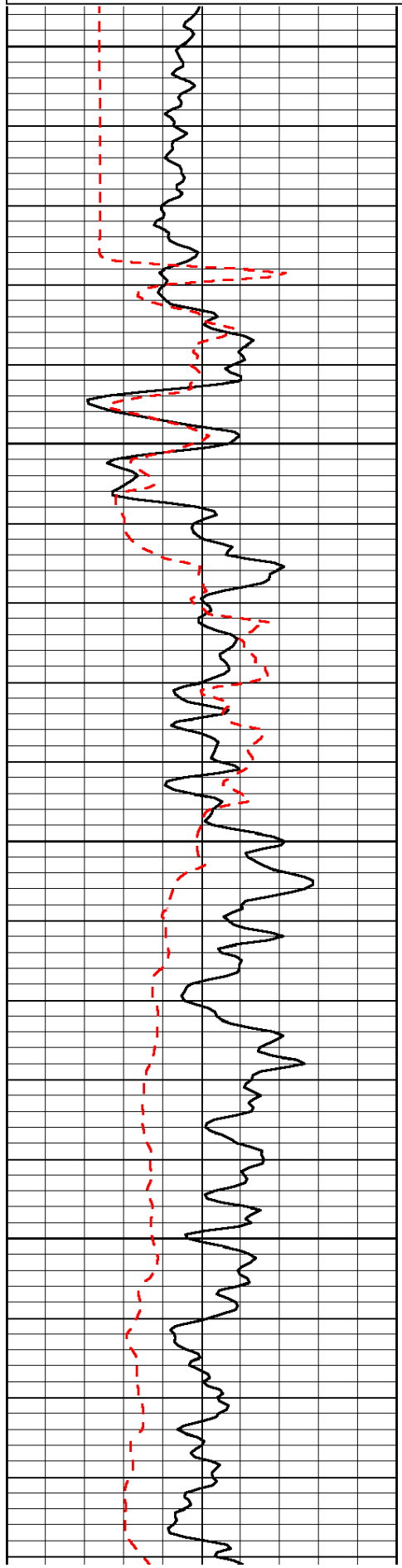
Thank you for using Log-Tech, Inc.
(785) 625-3858

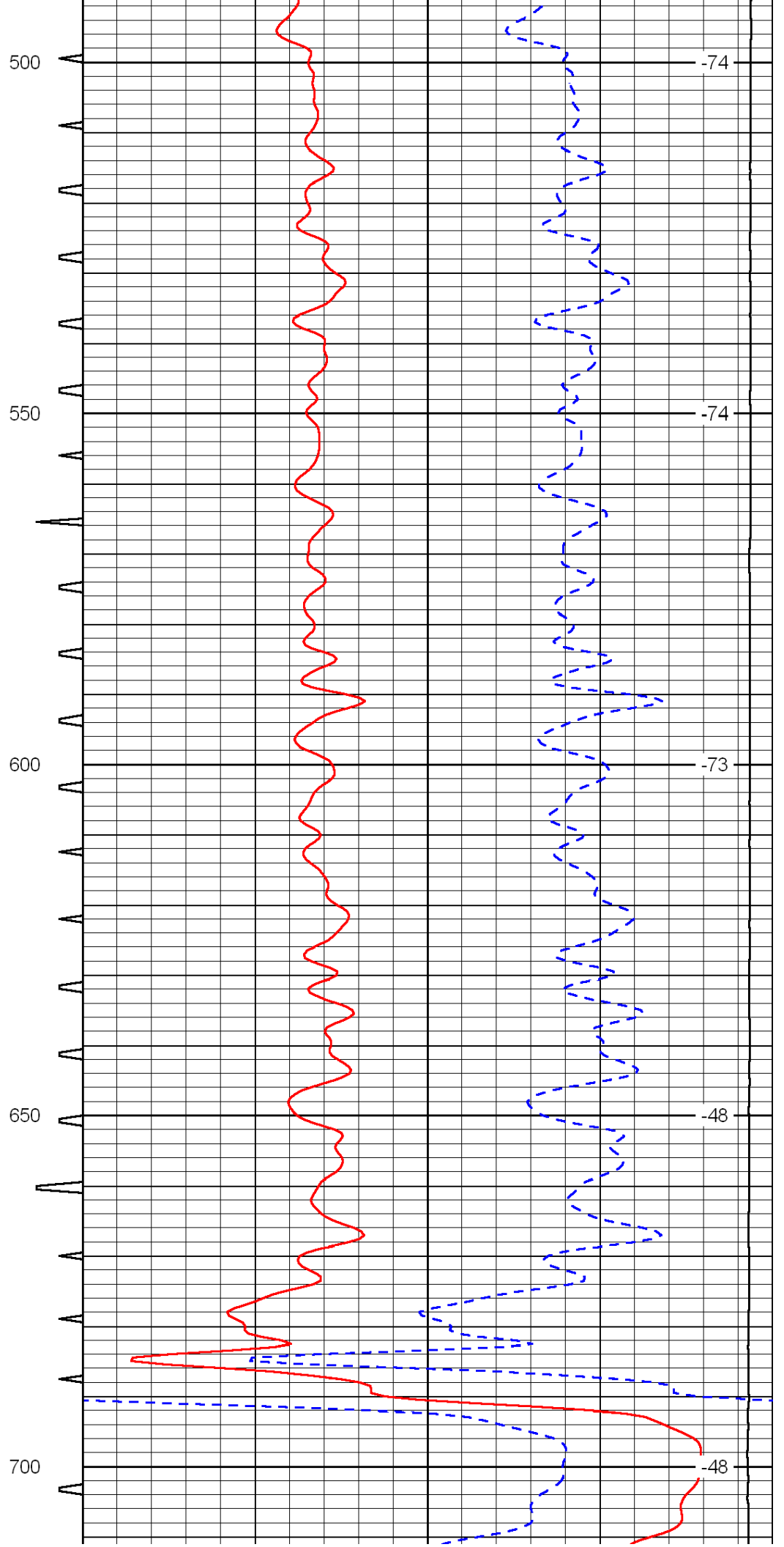
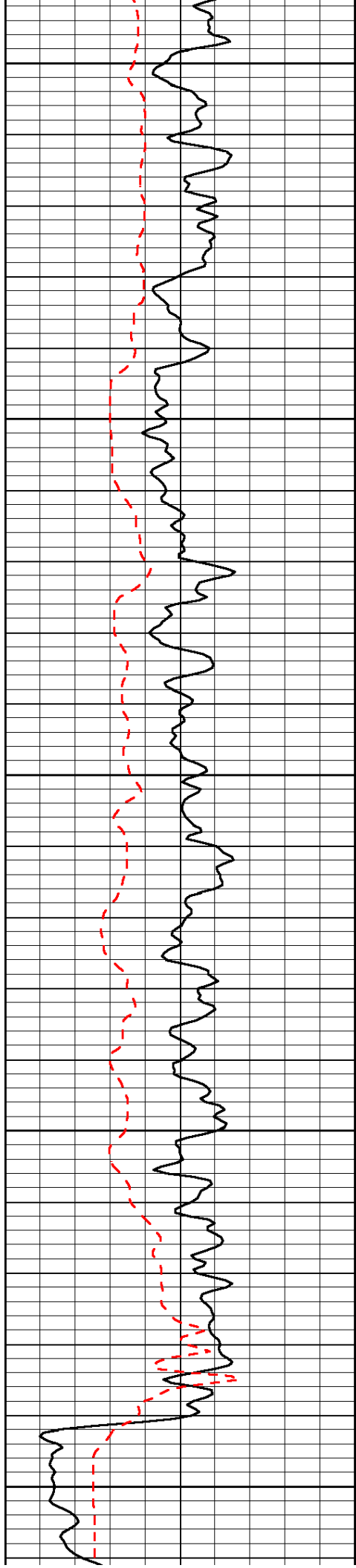
Odin, 1 East, South Into

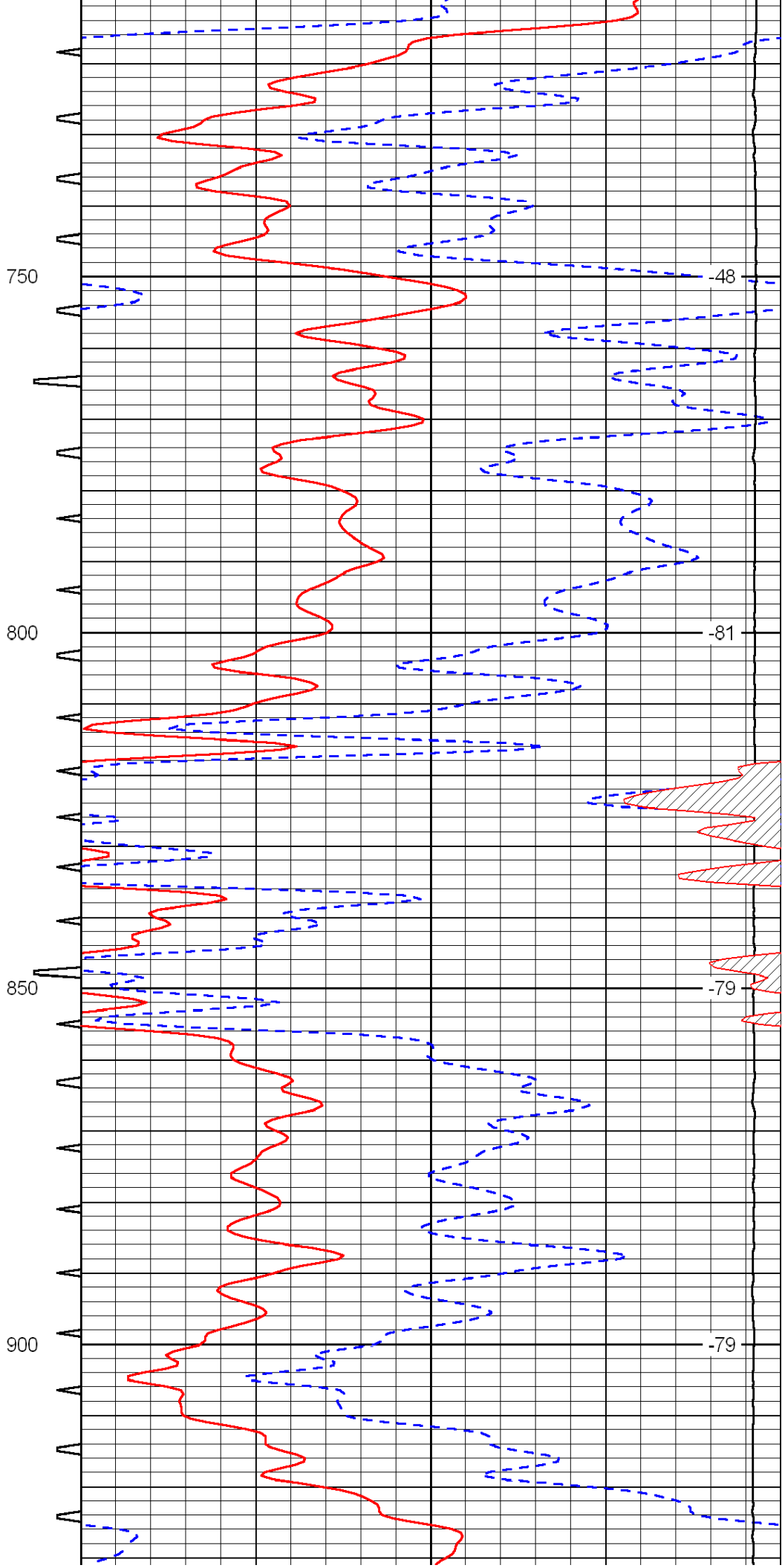
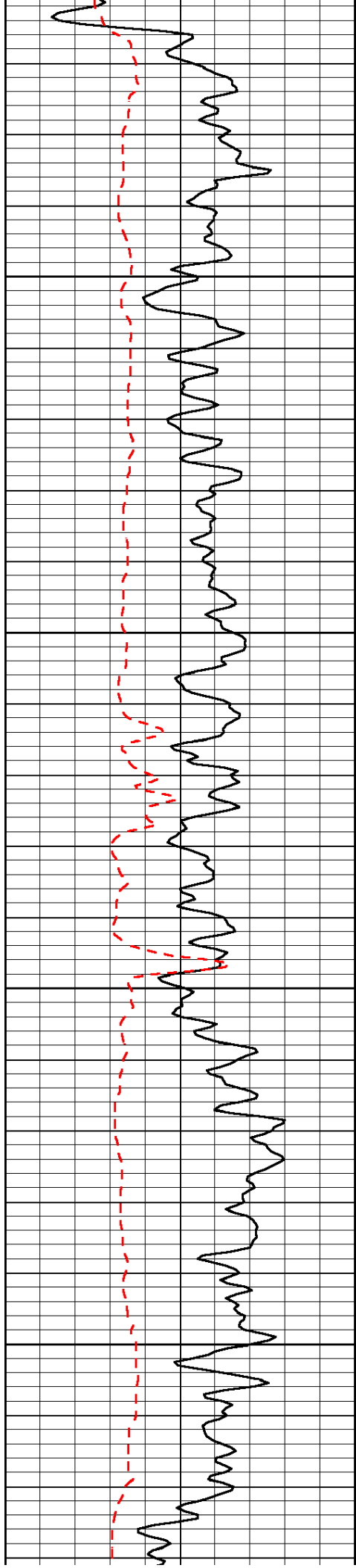
Database File: c:\warrior\data\rjm_jerry beran no. 1\rjmhd.db
 Dataset Pathname: dil/rjmstck
 Presentation Format: sonic
 Dataset Creation: Wed Sep 22 13:47:17 2010
 Charted by: Depth in Feet scaled 1:240

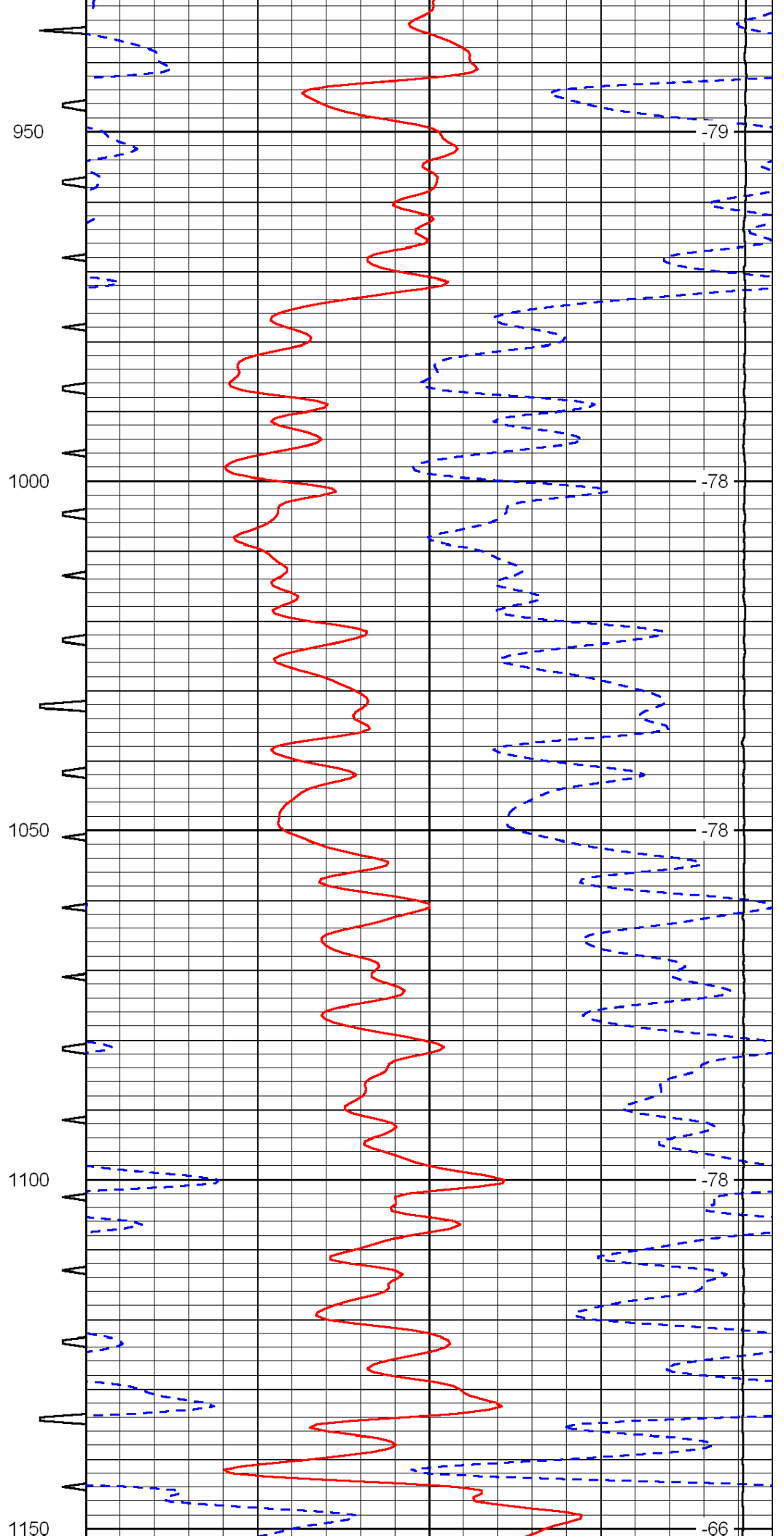
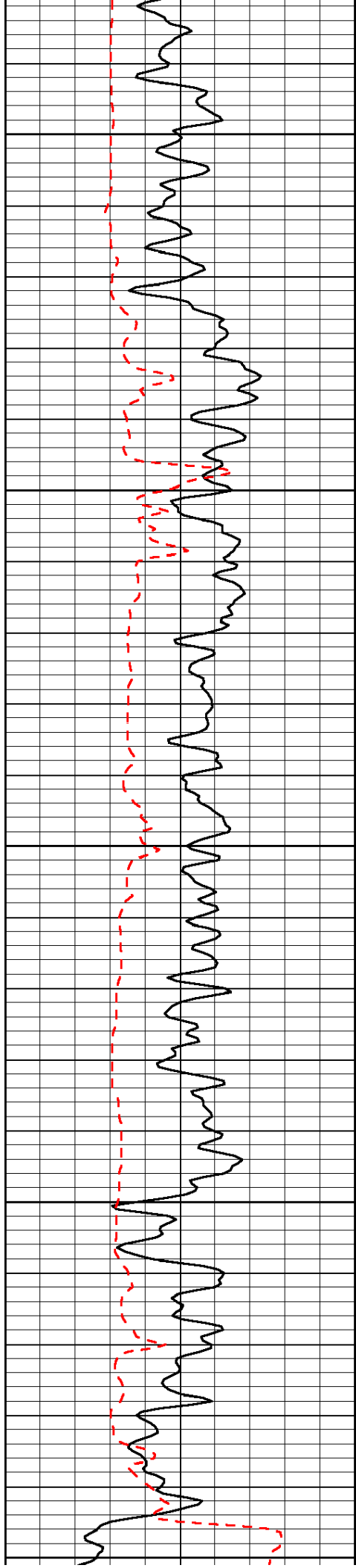
0	Gamma Ray	150	Sonic Int	140	Delta Time (usec/ft)	40
150	Gamma Ray	300	5	0	SPOR	-10
6	Caliper (GAPI)	16		15000	LTEN (lb)	0

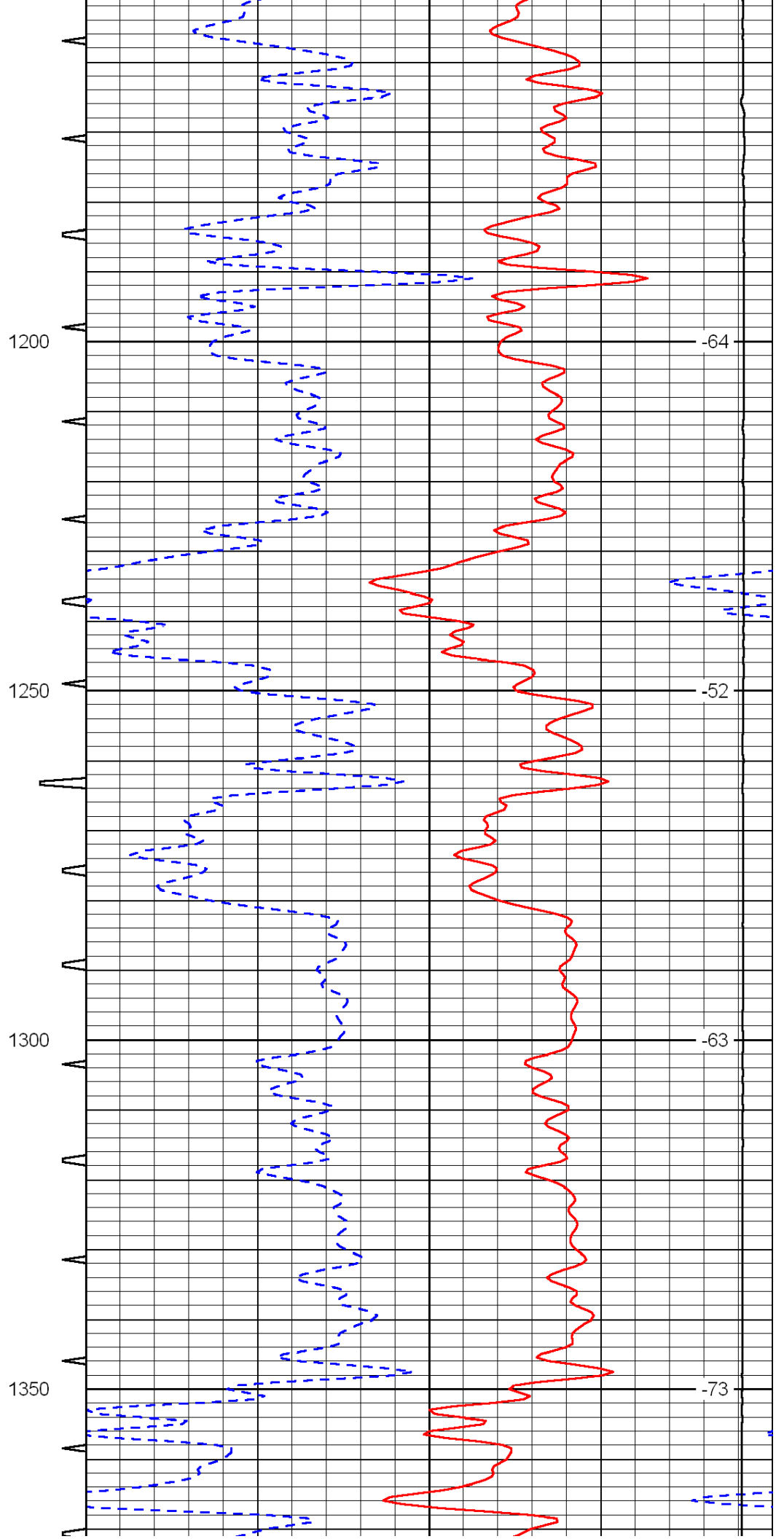
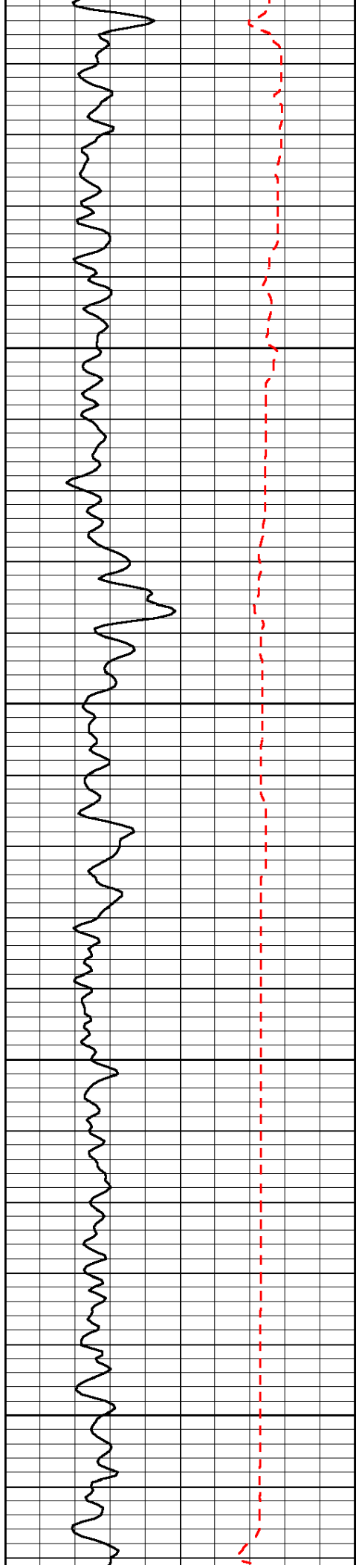
LSPD

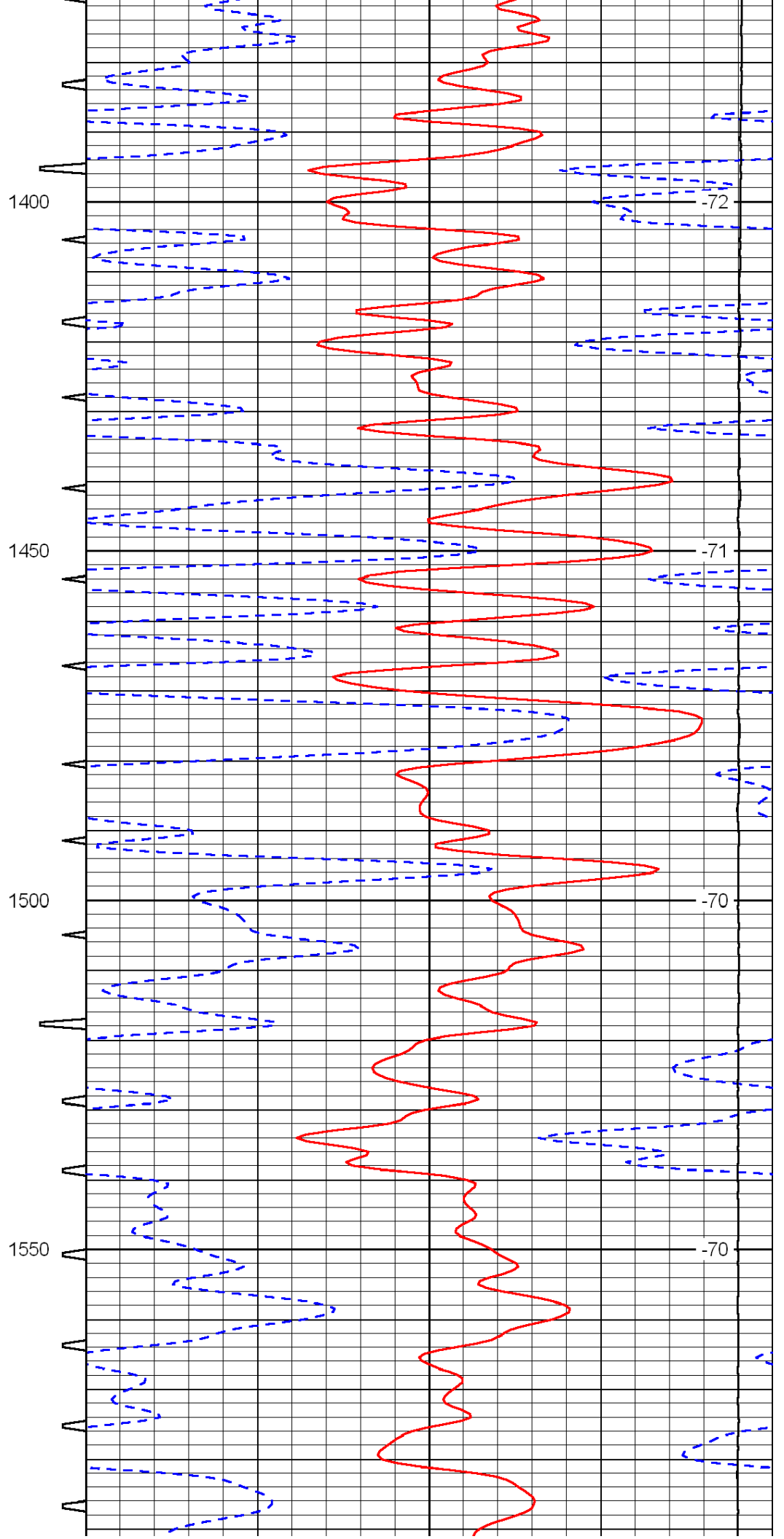
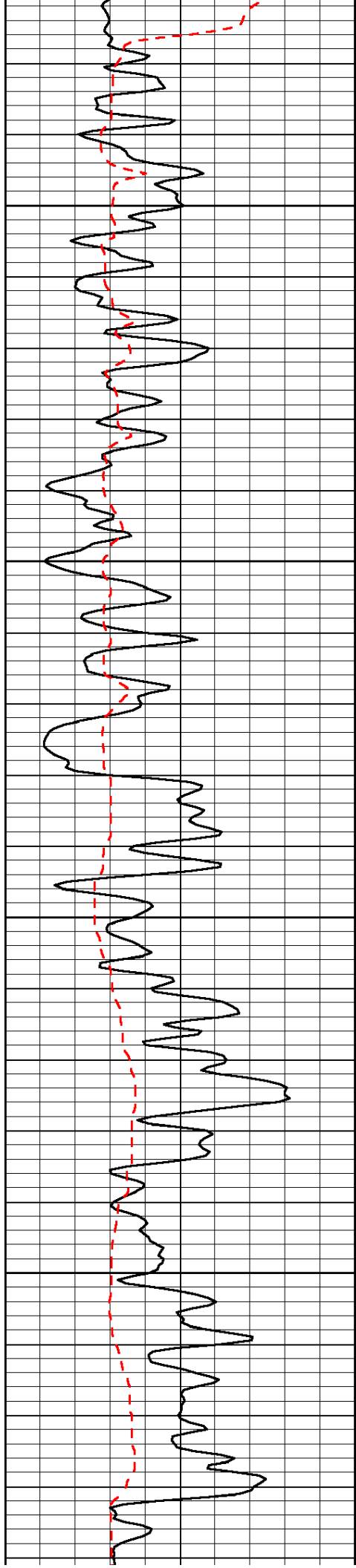


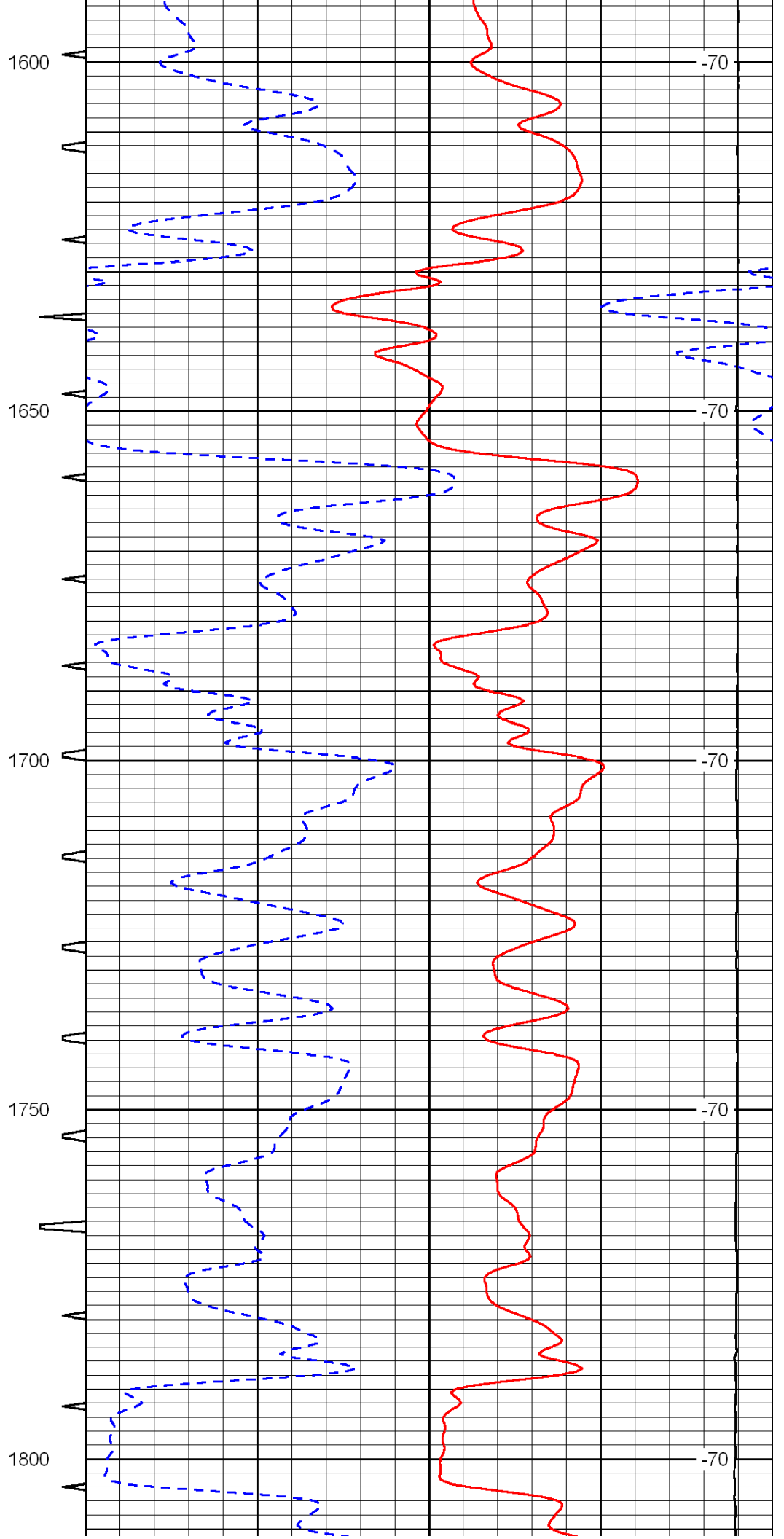
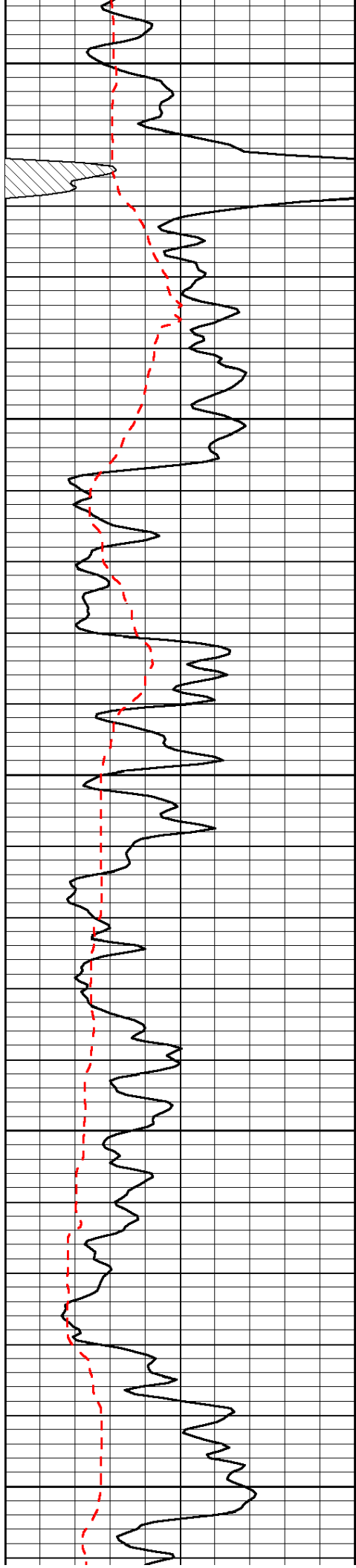


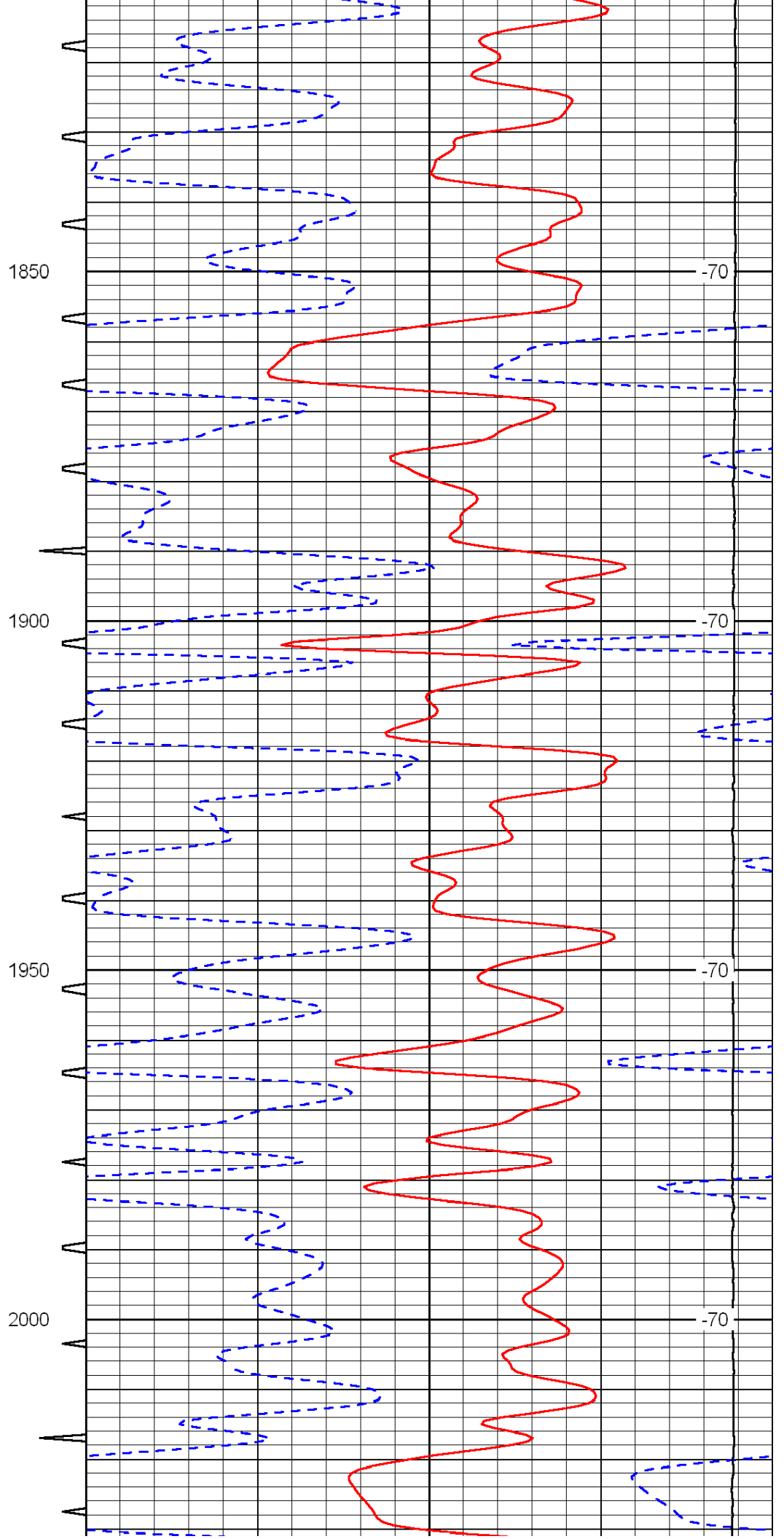
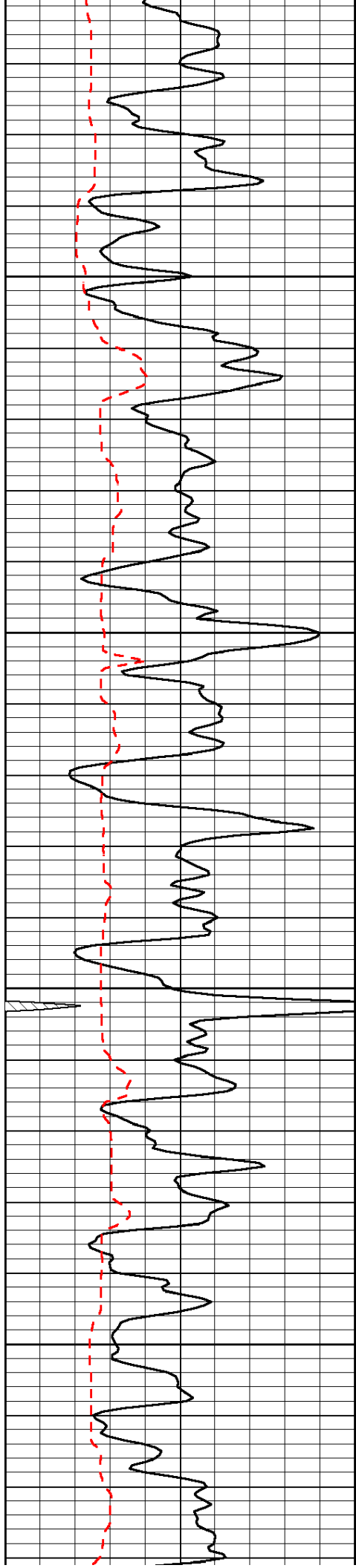


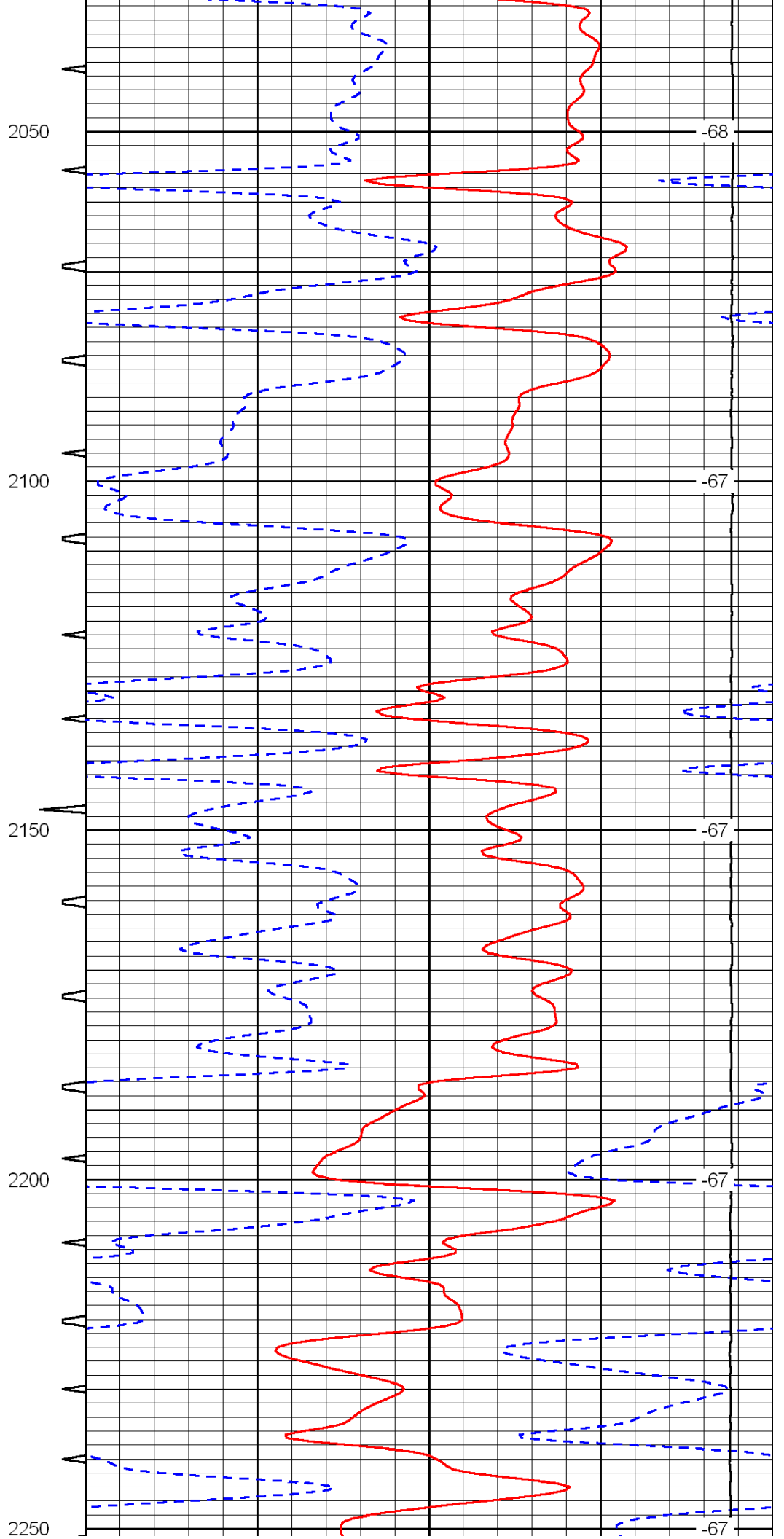
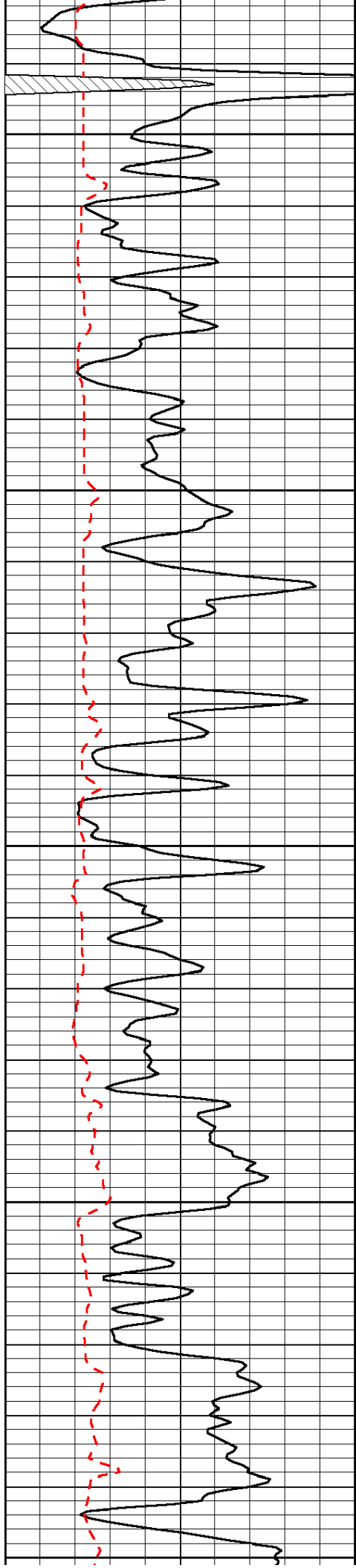


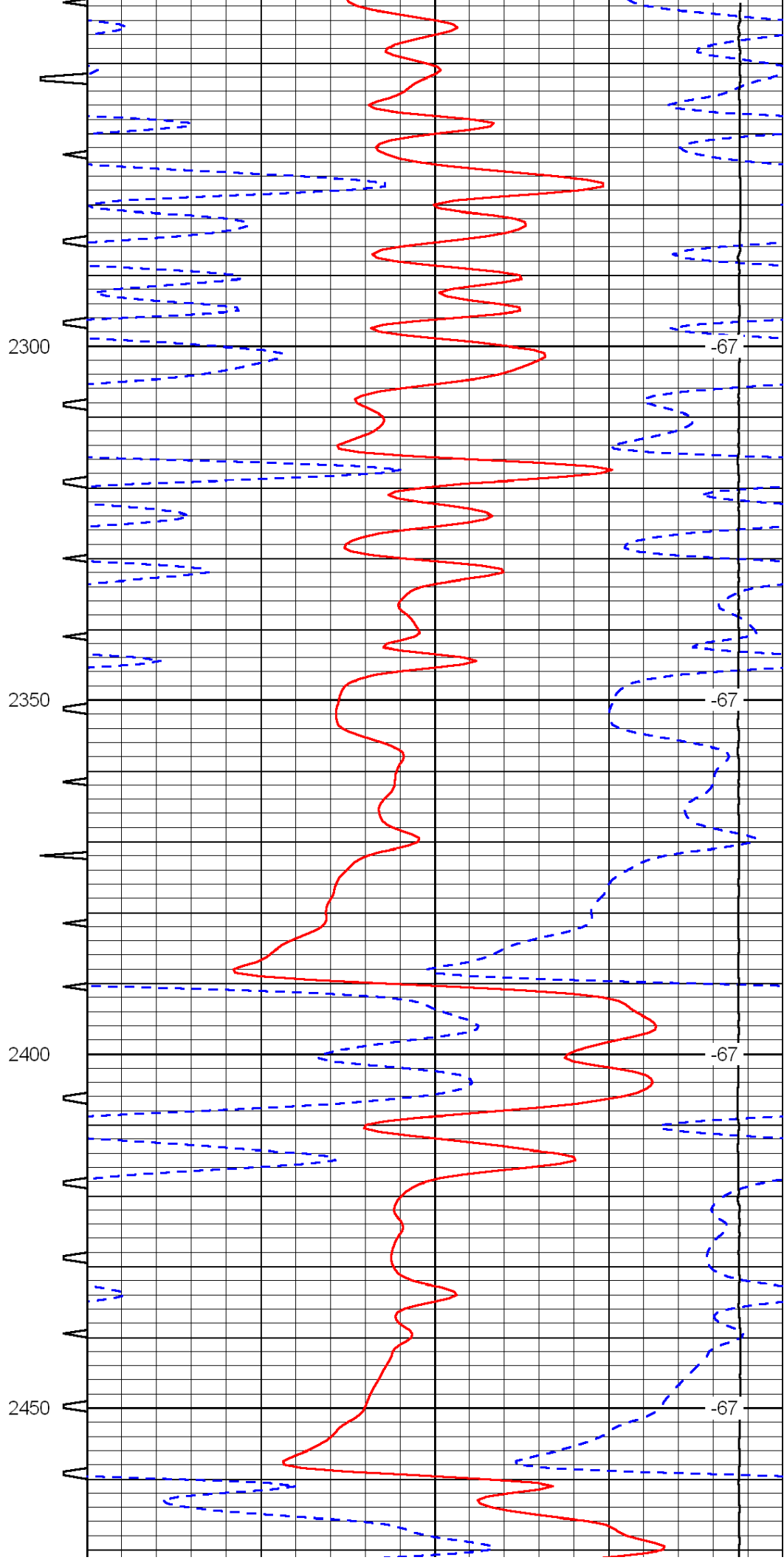
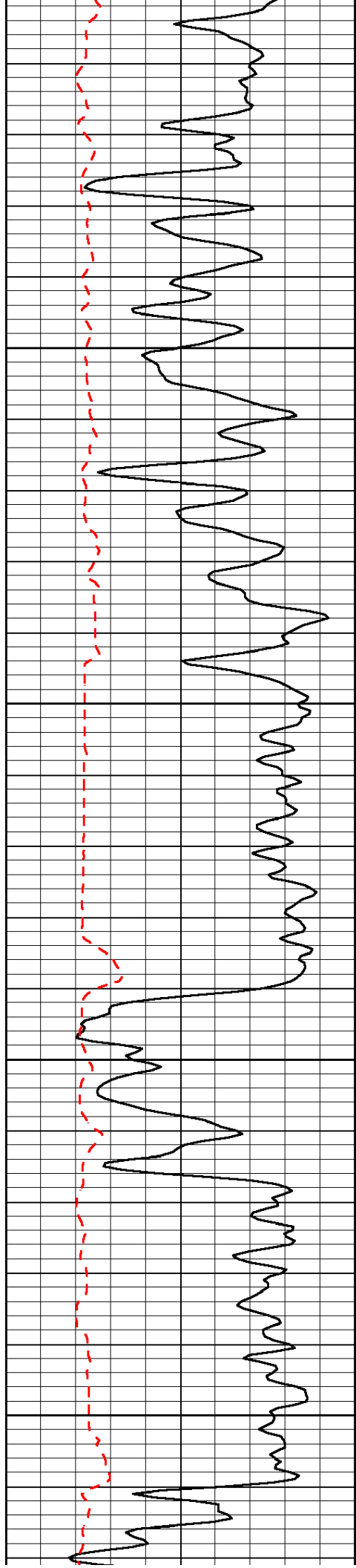


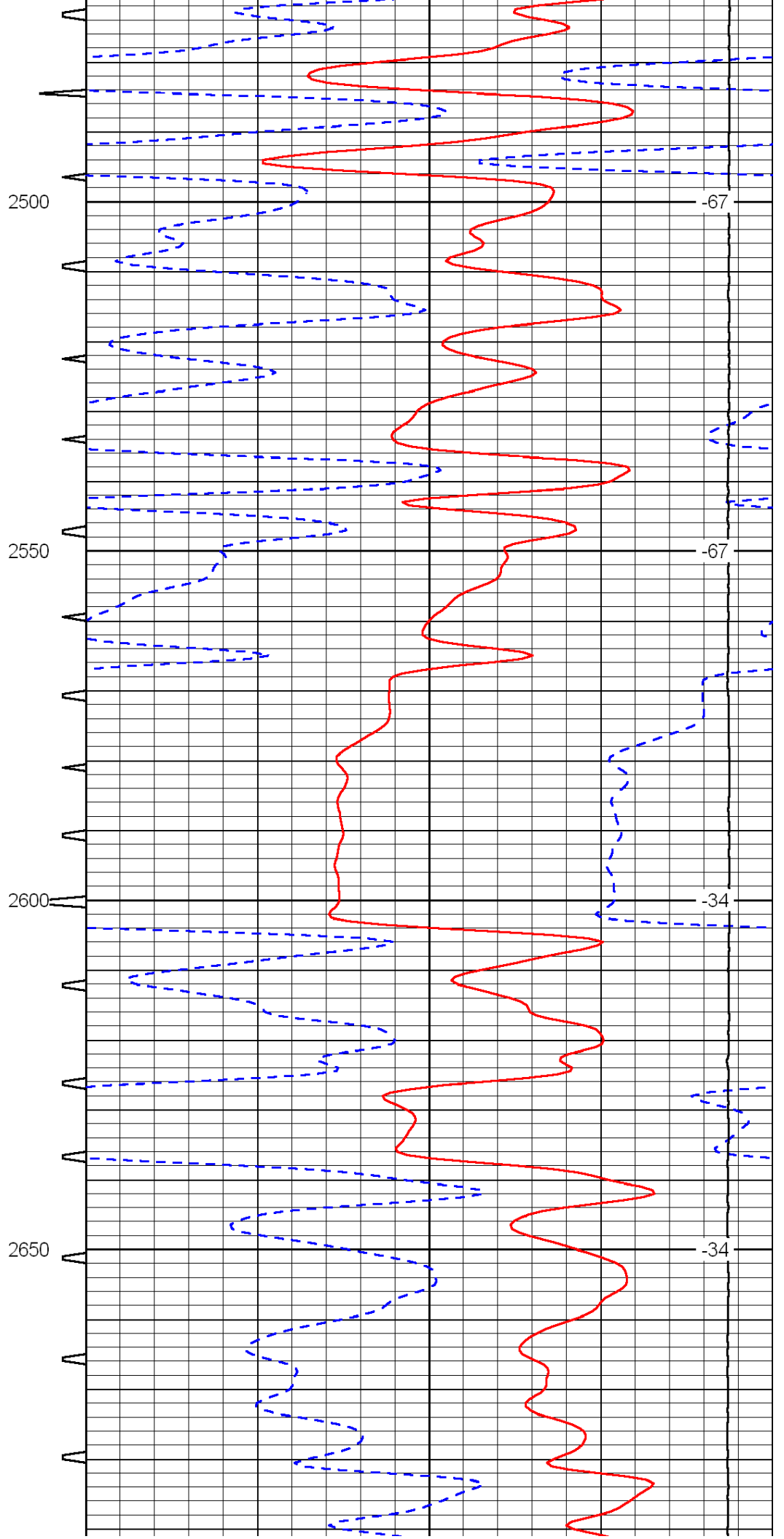
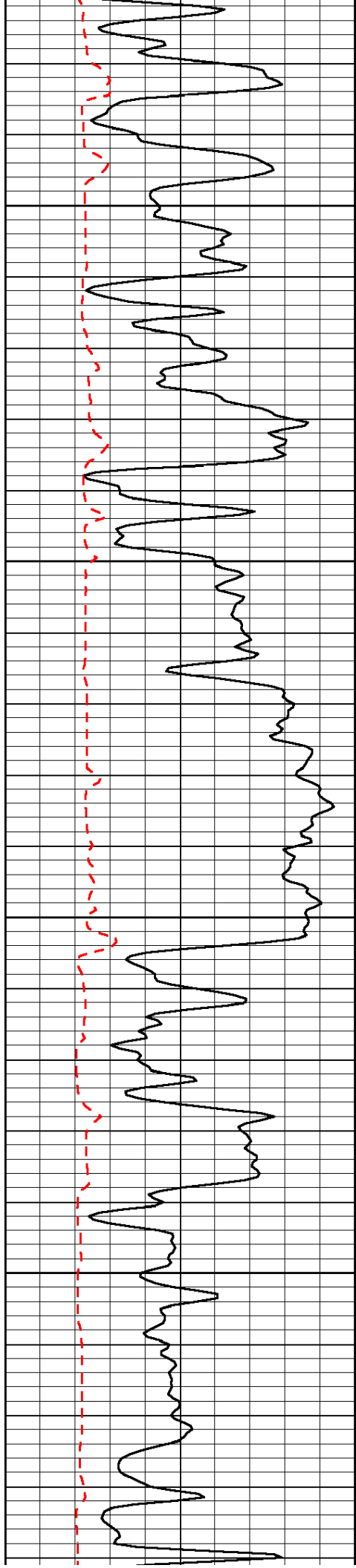


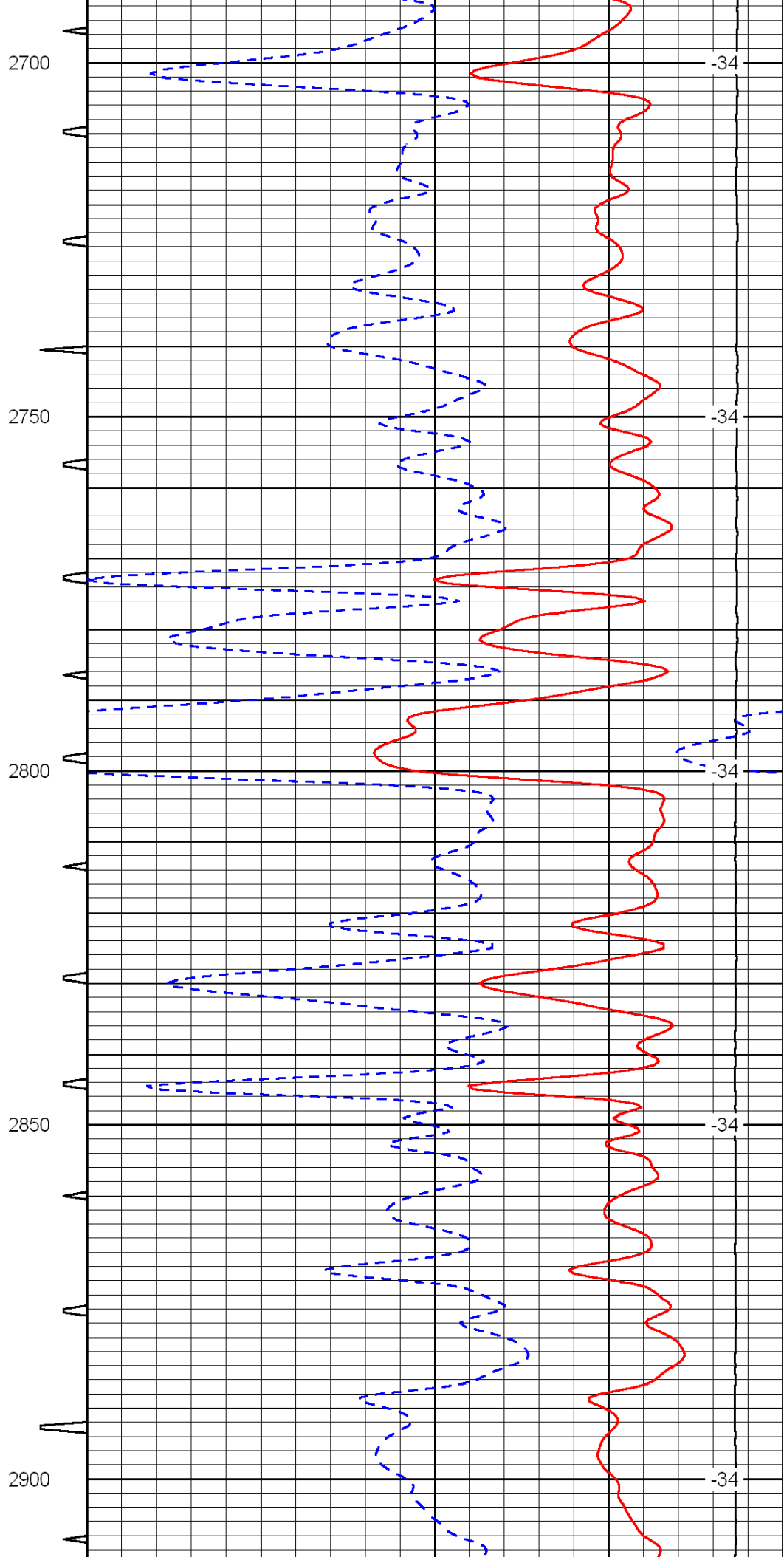
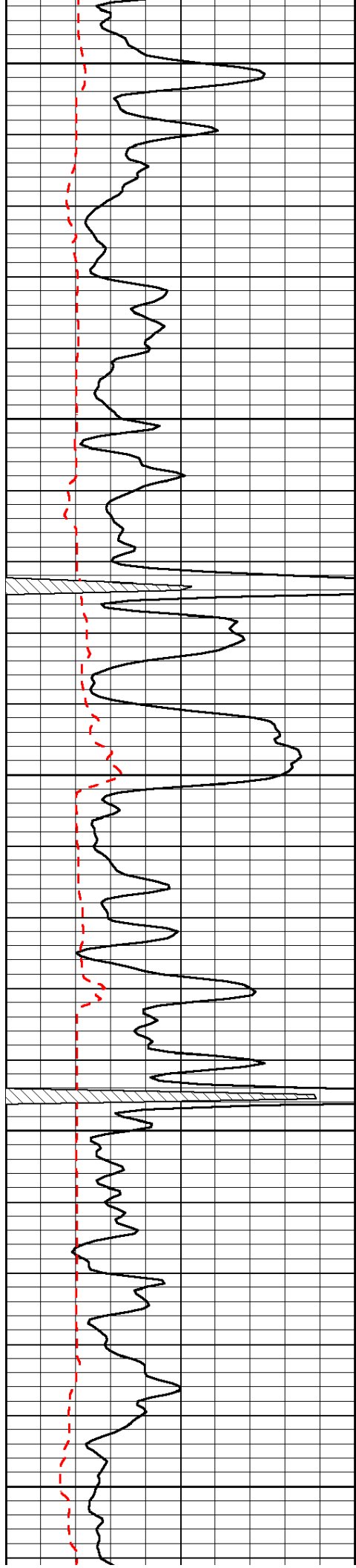


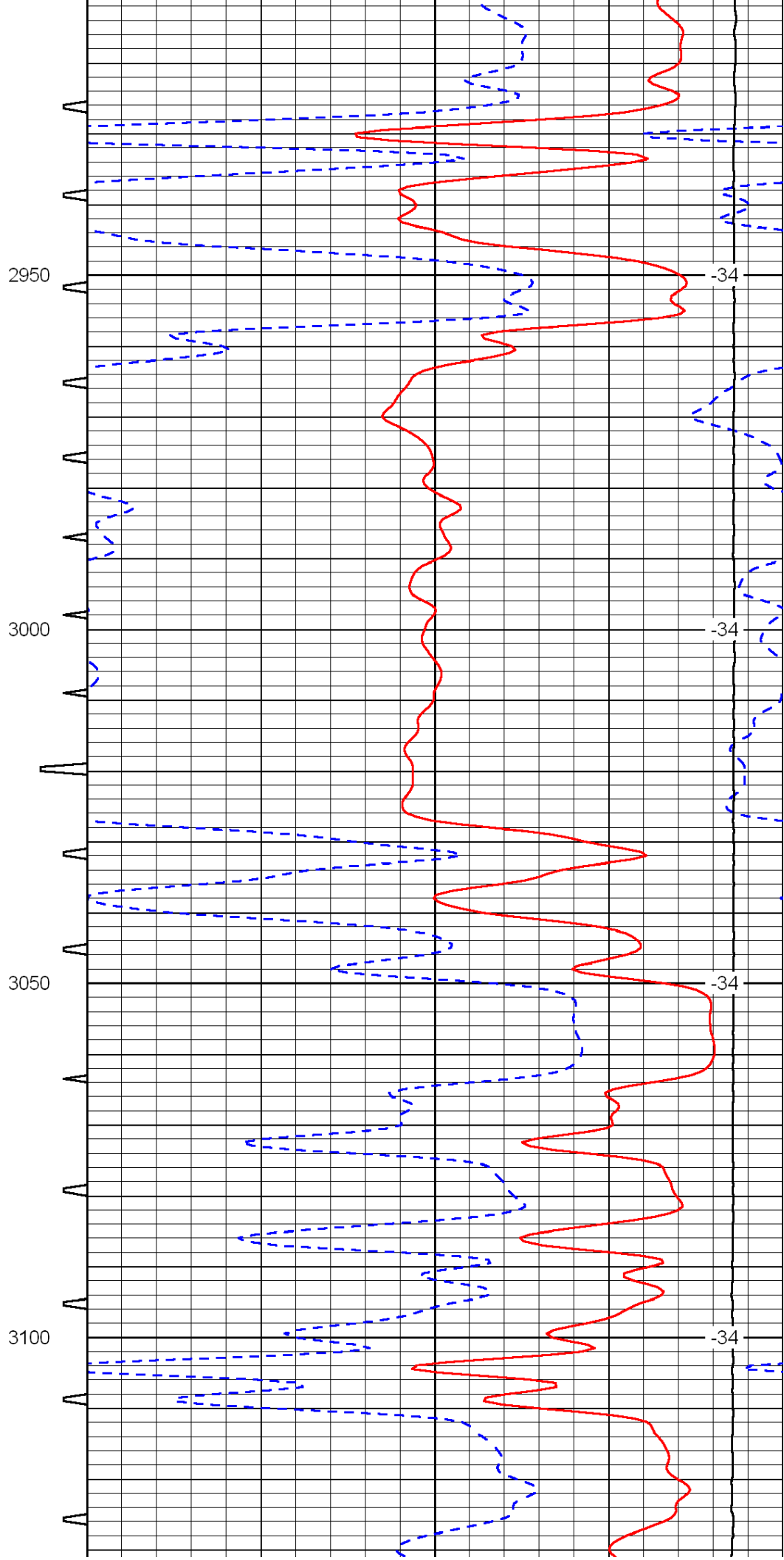
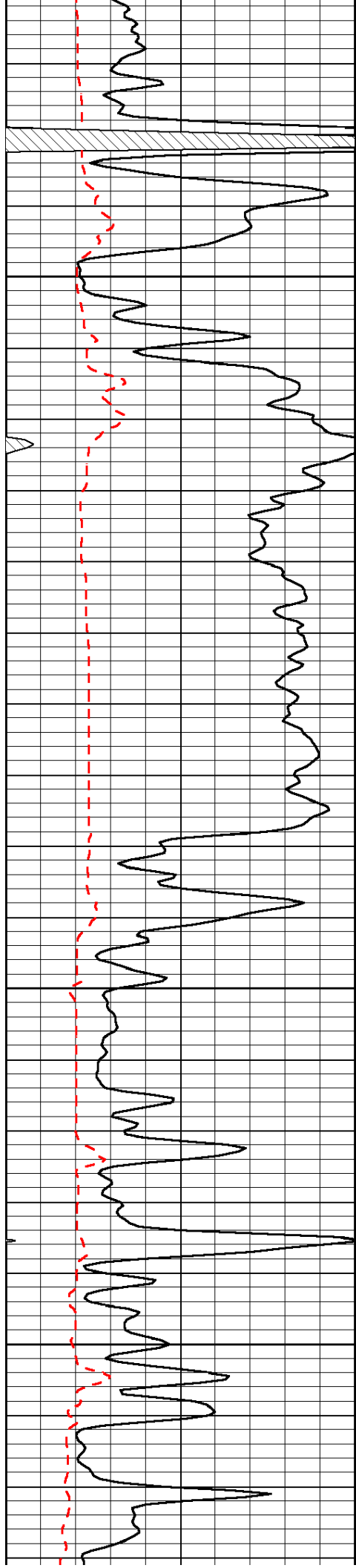


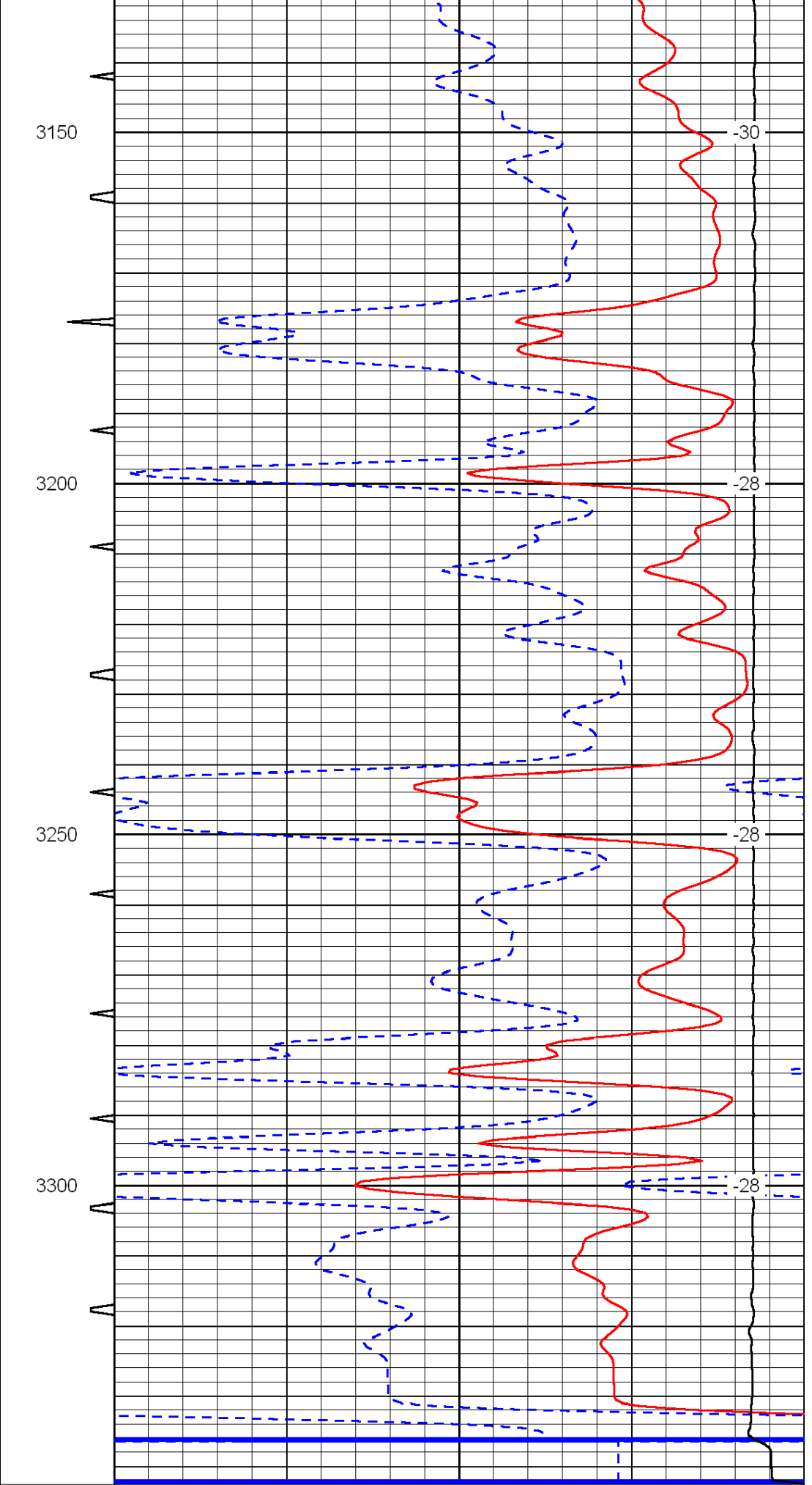
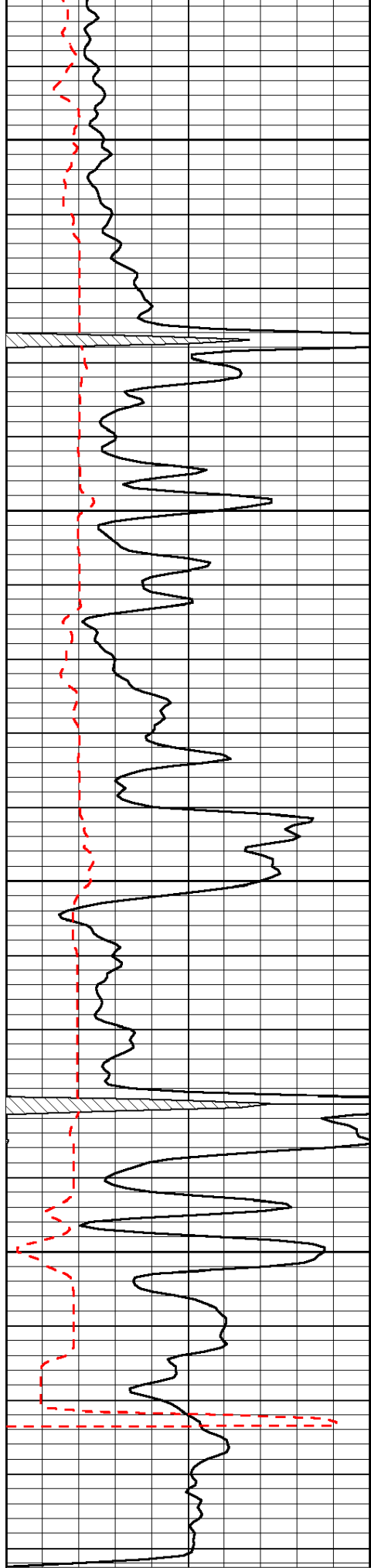












0 Gamma Ray 150
150 Gamma Ray 300

140 30 5
40 -10

6 Caliper (GAPI) 16

15000 LTEN (lb) 0

LSPD