



**DIGITAL LOG** (785) 625-3858

**Dual Induction Log**

API No.	15-167-23,658-00-00		
Company	Russell Oil, Inc.	State	Kansas
Well	Steinle No. 1-32	County	Russell
Field	Nuss	Location	990' FNL & 1,730' FEL
Sec:	32	Twp:	15S Rge: 14W
Other Services	CNL/CDL MEL		

Permanent Datum	Ground Level	Elevation	1921
Log Measured From	Kelly Bushing	7	Ft. Above Perm. Datum
Drilling Measured From	Kelly Bushing		
Date	9/15/2010		

Run Number	One
Depth Driller	3410
Depth Logger	3403
Bottom Logged Interval	3402
Top Log Interval	900
Casing Driller	8.625 @ 929
Casing Logger	929
Bit Size	7.875
Type Fluid in Hole	Chemical
Salinity, ppm CL	11,500
Density / Viscosity	9.0   42
pH / Fluid Loss	10.5   14.2
Source of Sample	Flowline
Rm @ Meas. Temp	.22 @ 74
Rmf @ Meas. Temp	.17 @ 74
Rmc @ Meas. Temp	.30 @ 74
Source of Rmf / Rmc	Charts
Rm @ BHT	.15 @ 110
Operating Rig Time	3 Hours
Max Rec. Temp. F	110
Equipment Number	10
Location	Hays
Recorded By	J. Long
Witnessed By	Kevin Bailey

<<< Fold Here >>>

All interpretations are opinions based on inferences from electrical or other measurements and we cannot and do not guarantee the accuracy or correctness of any interpretation, and we shall not, except in the case of gross or willful negligence on our part, be liable or responsible for any loss, costs, damages, or expenses incurred or sustained by anyone resulting from any interpretation made by any of our officers, agents or employees. These interpretations are also subject to our general terms and conditions set out in our current Price Schedule.

**Comments**

Thank you for using Log-Tech, Inc.  
(785) 625-3858

Hoisington (Highway 181 and Highway 4), 12 North to Michaelis Rd, 2 3/4 West, South Into

Database File: c:\warrior\data\russell\_steinle no. 1-32\russelloilhd.db  
 Dataset Pathname: dil/russtck  
 Presentation Format: dil2in  
 Dataset Creation: Wed Sep 15 11:49:43 2010  
 Charted by: Depth in Feet scaled 1:600

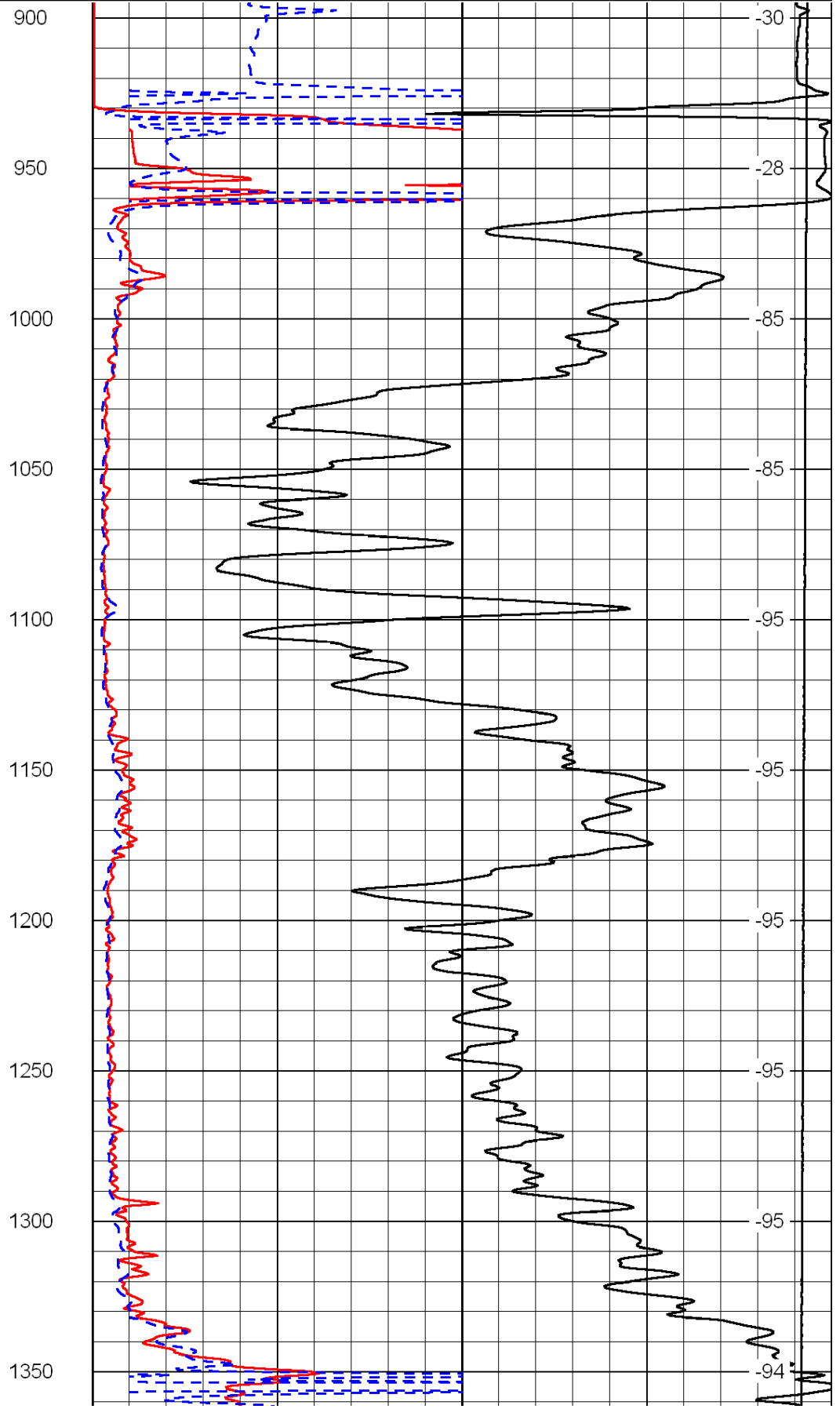
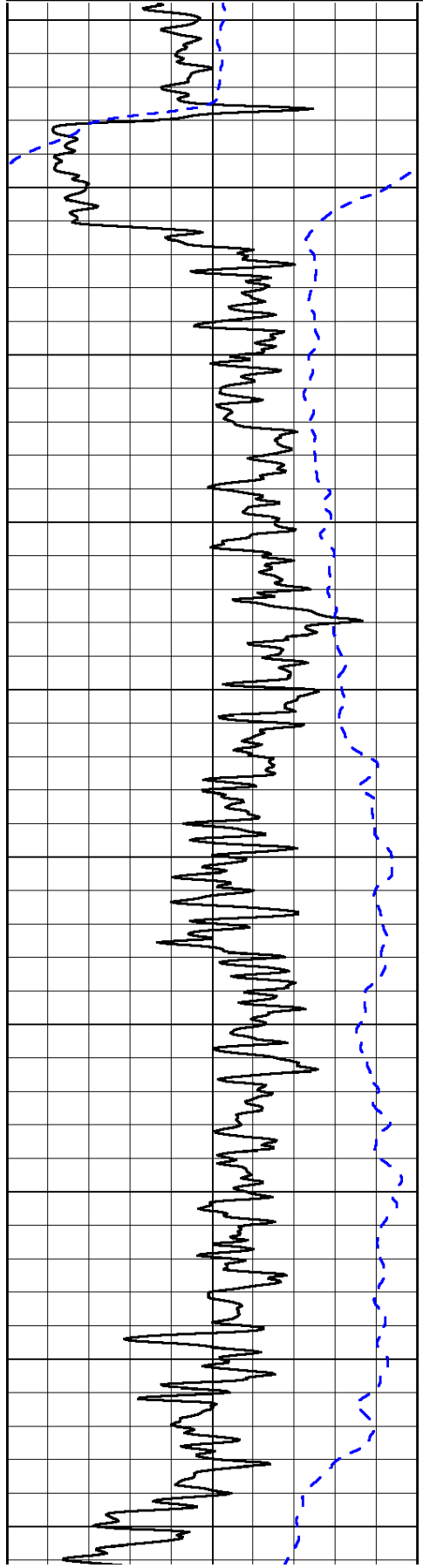
0	Gamma Ray	150
-200	SP (mV)	0

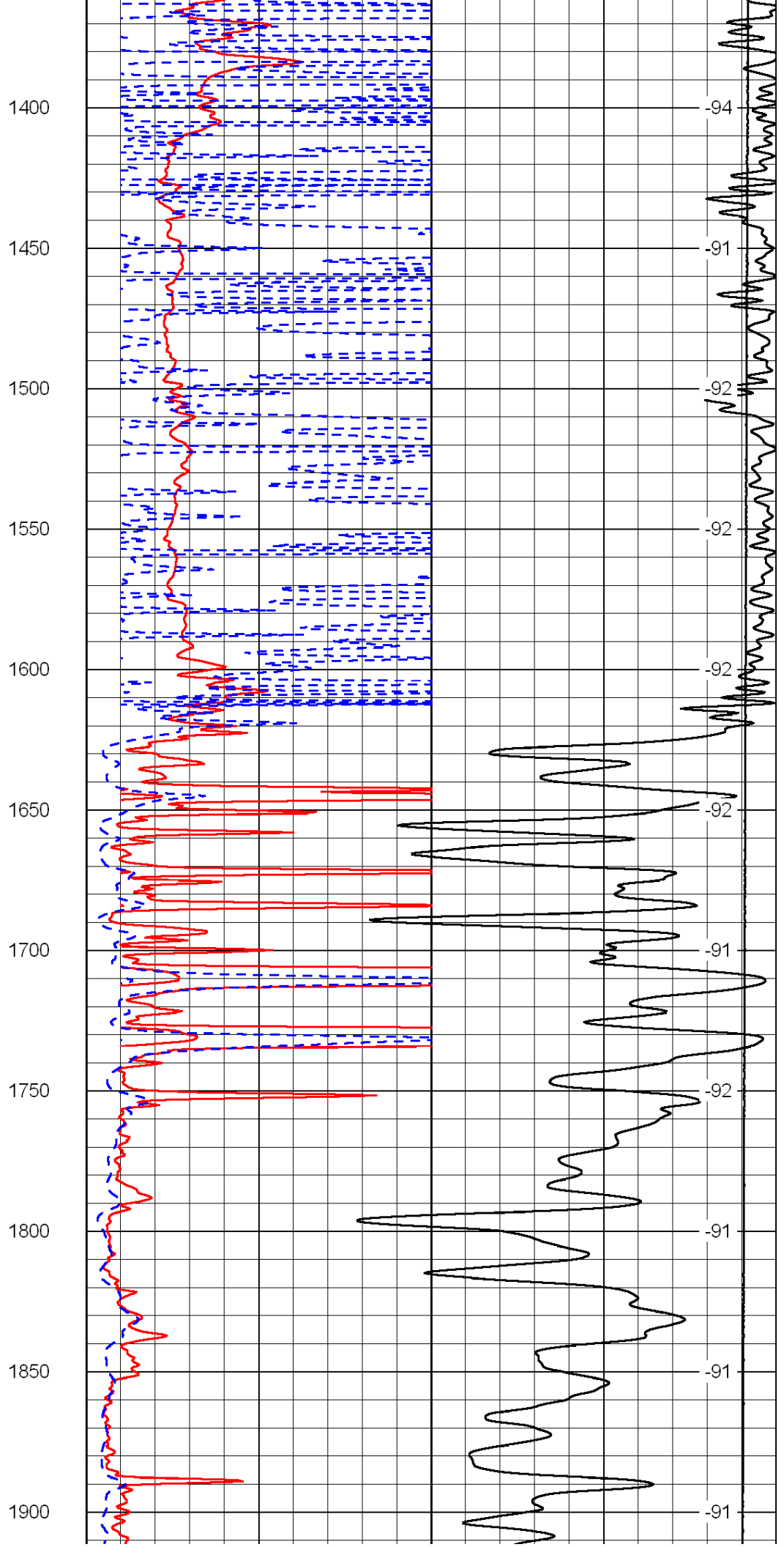
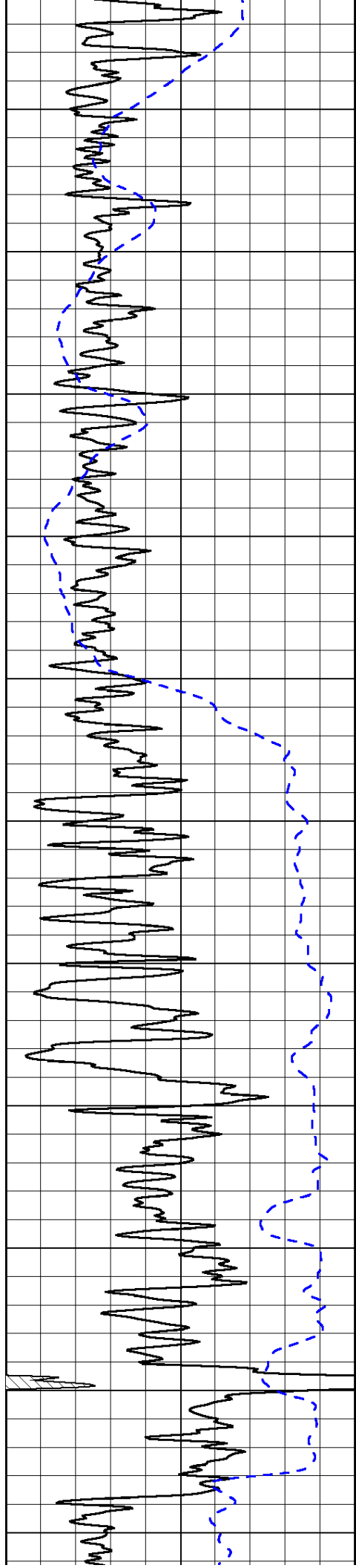
0	Shallow Resistivity	50
0	Deep Resistivity	50

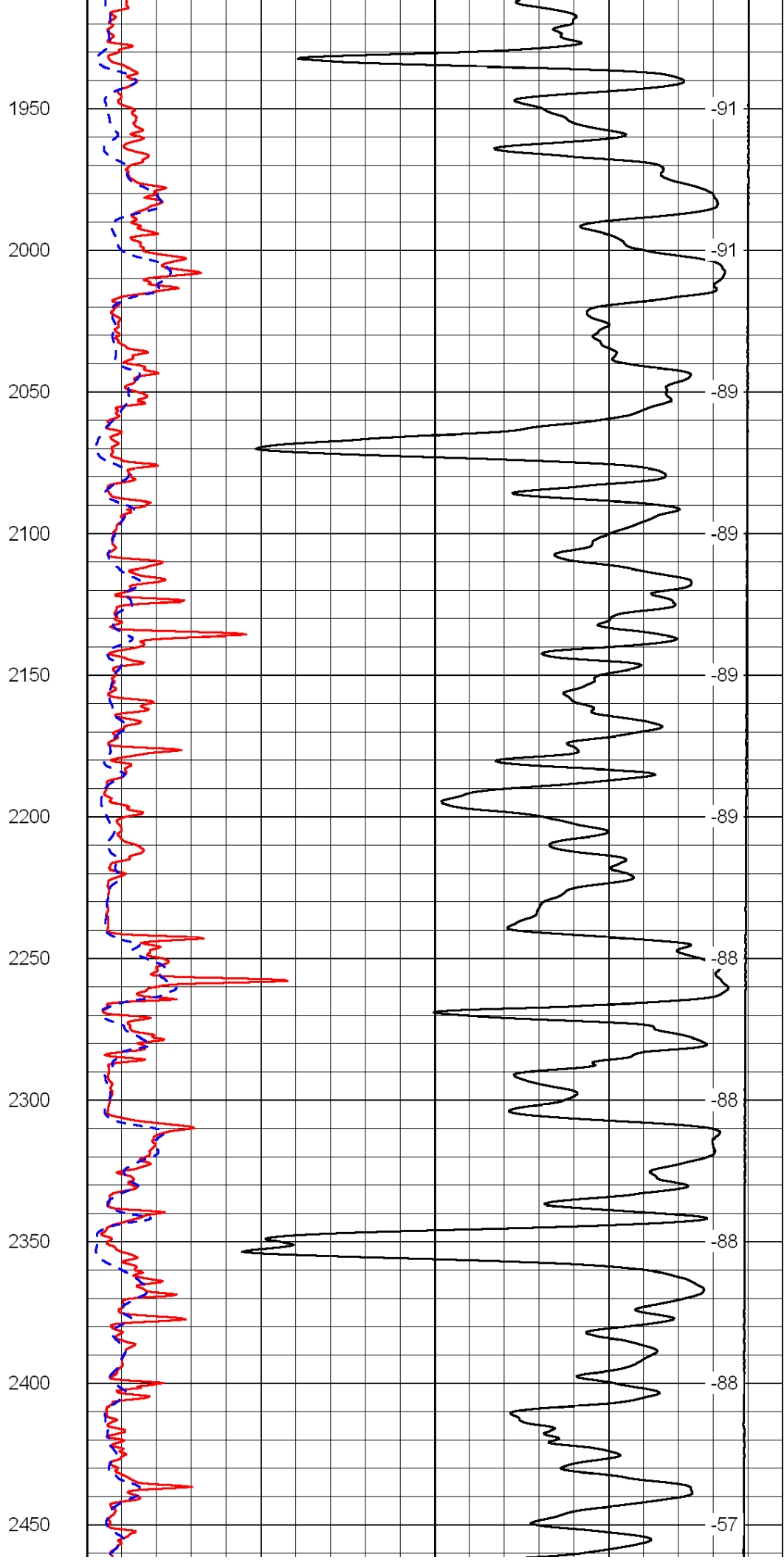
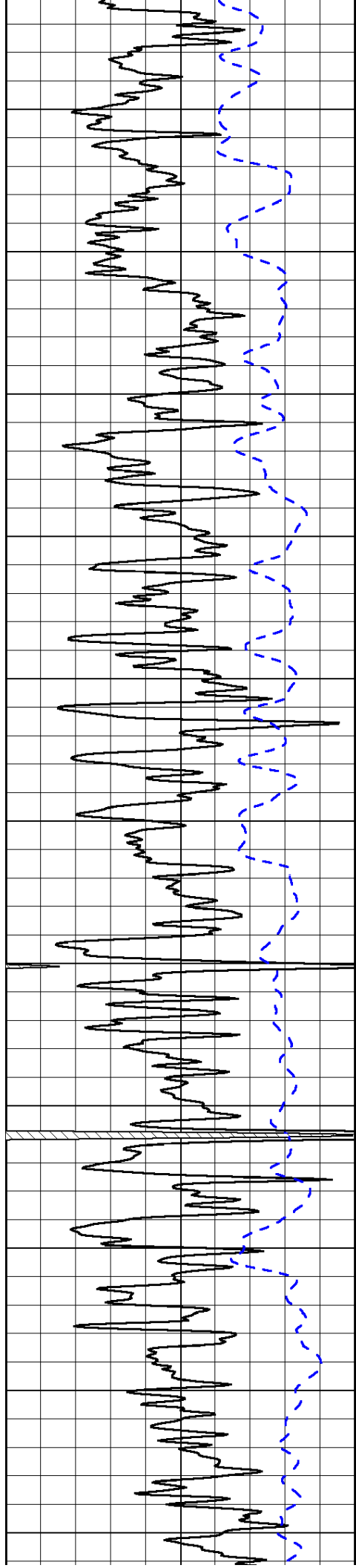
LSPD

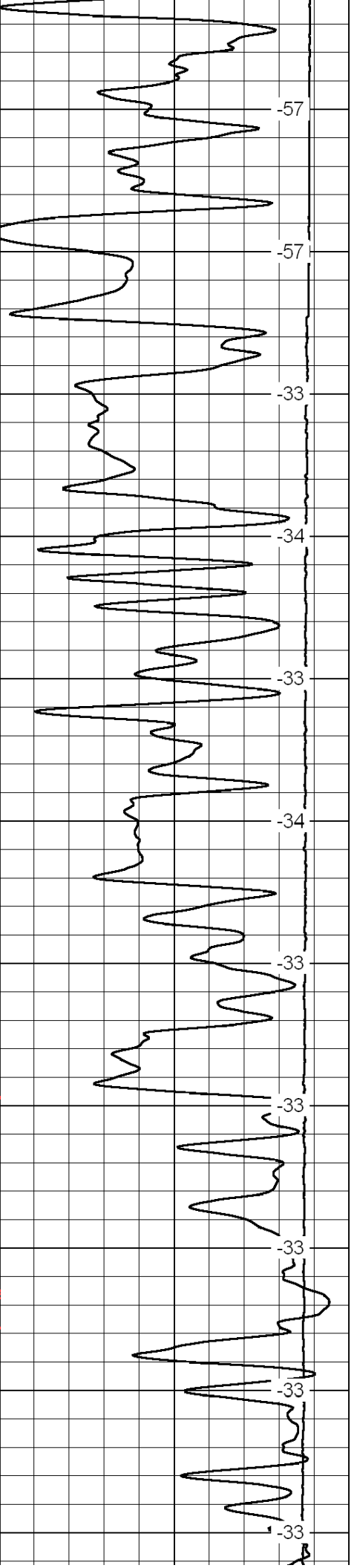
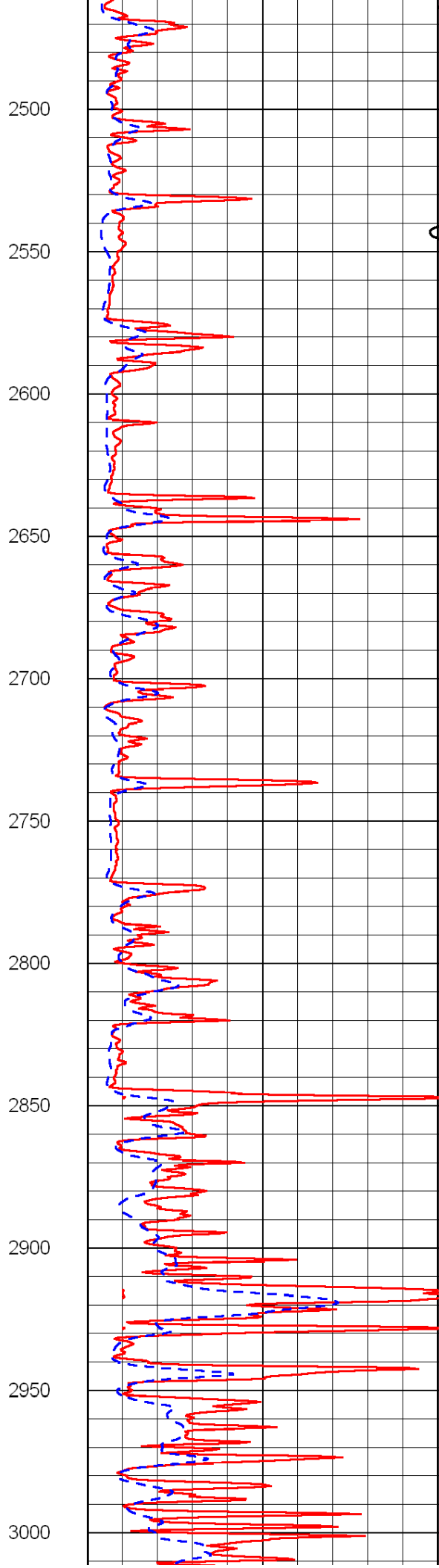
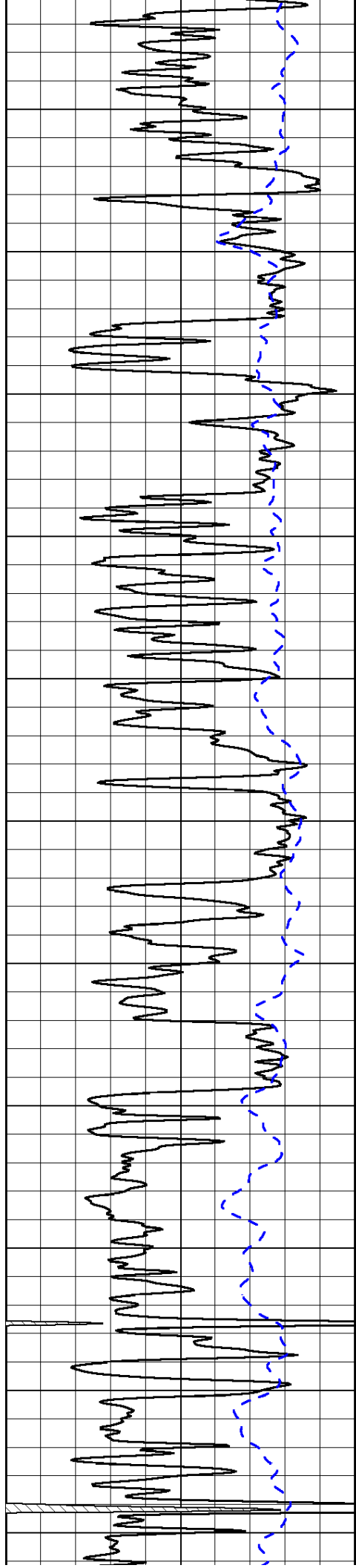
1000	Conductivity	0
15000	Line Tension	0

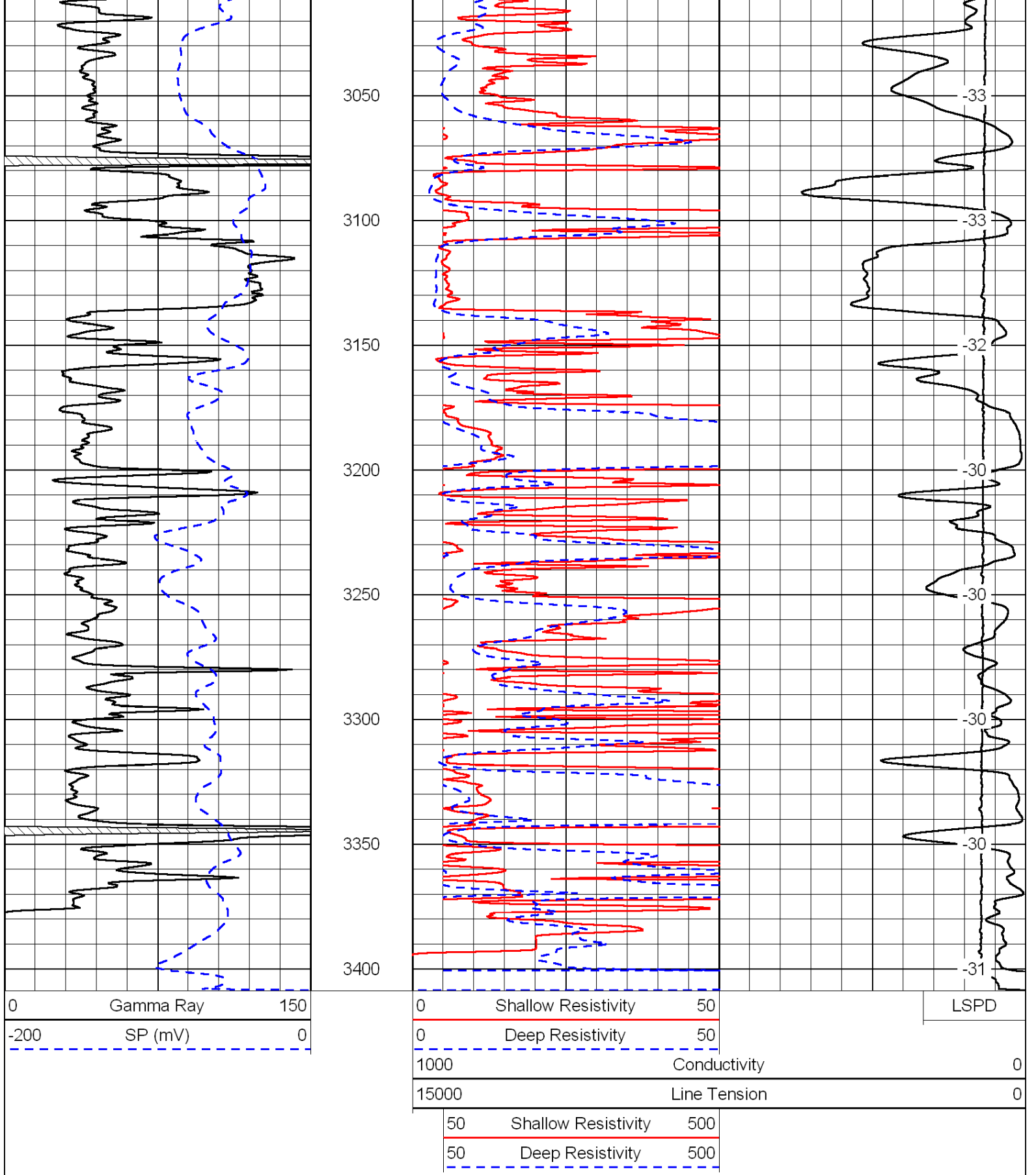
50	Shallow Resistivity	500
50	Deep Resistivity	500



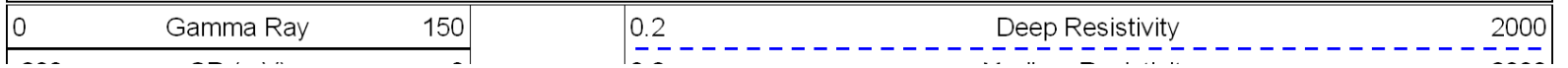








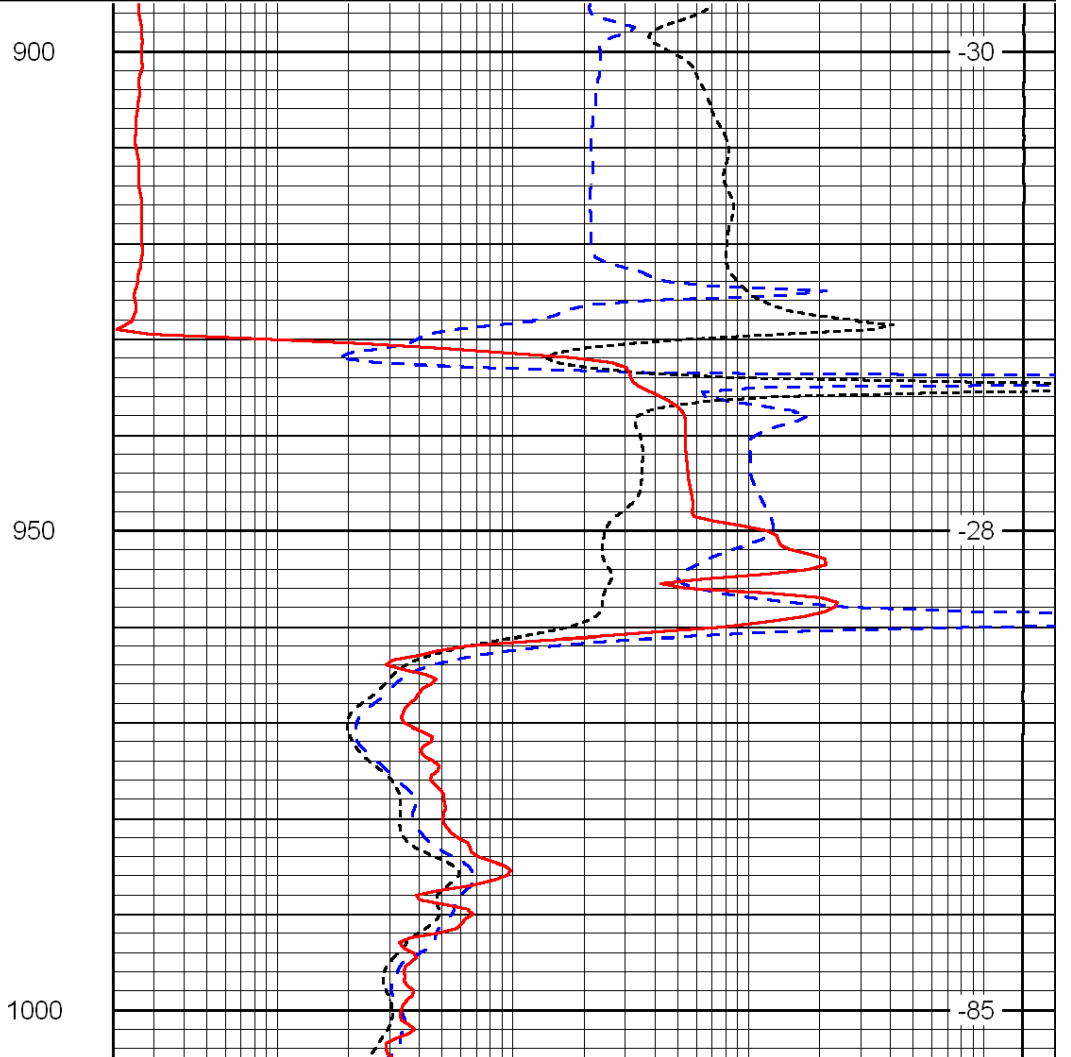
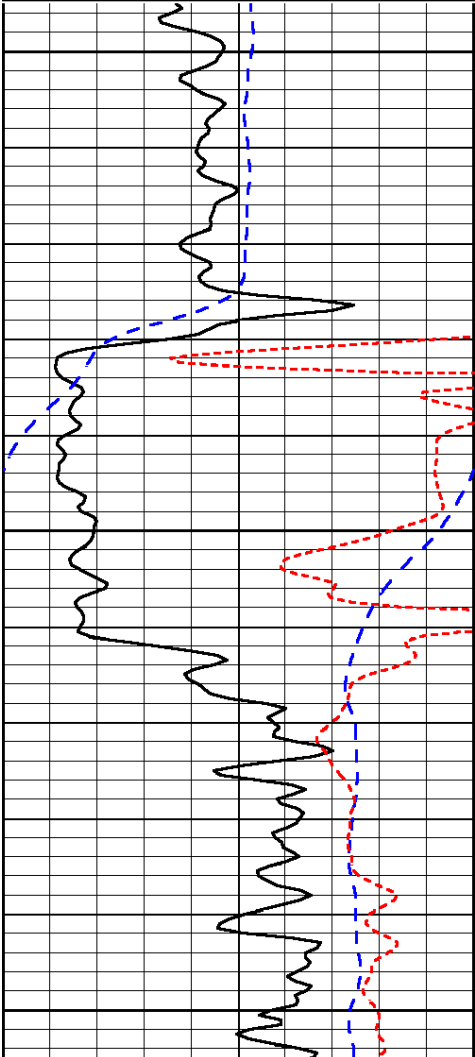
Database File: c:\warrior\data\russell\_steinle no. 1-32\russelloilhd.db  
 Dataset Pathname: dil/russtck  
 Presentation Format: dil  
 Dataset Creation: Wed Sep 15 11:49:43 2010  
 Charted by: Depth in Feet scaled 1:240



-200	SP (mV)	0
-160	Rxo / Rt	40

0.2	Medium Resistivity	2000
0.2	Shallow Resistivity	2000
15000	Line Tension	0

LSPD



0	Gamma Ray	150
-200	SP (mV)	0
-160	Rxo / Rt	40

0.2	Deep Resistivity	2000
0.2	Medium Resistivity	2000
0.2	Shallow Resistivity	2000
15000	Line Tension	0

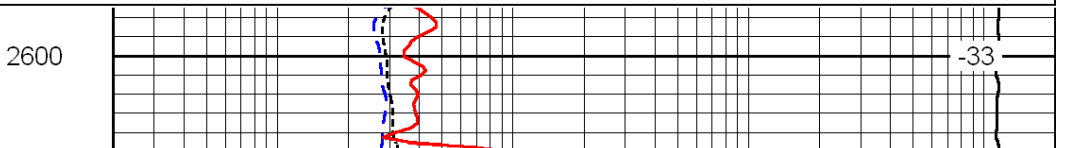
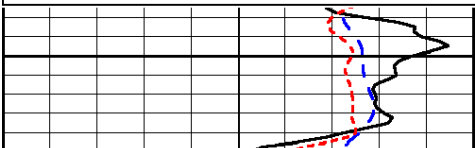
LSPD

Database File: c:\warrior\data\russell\_steinle no. 1-32\russelloilhd.db  
 Dataset Pathname: dil/russtck  
 Presentation Format: dil  
 Dataset Creation: Wed Sep 15 11:49:43 2010  
 Charted by: Depth in Feet scaled 1:240

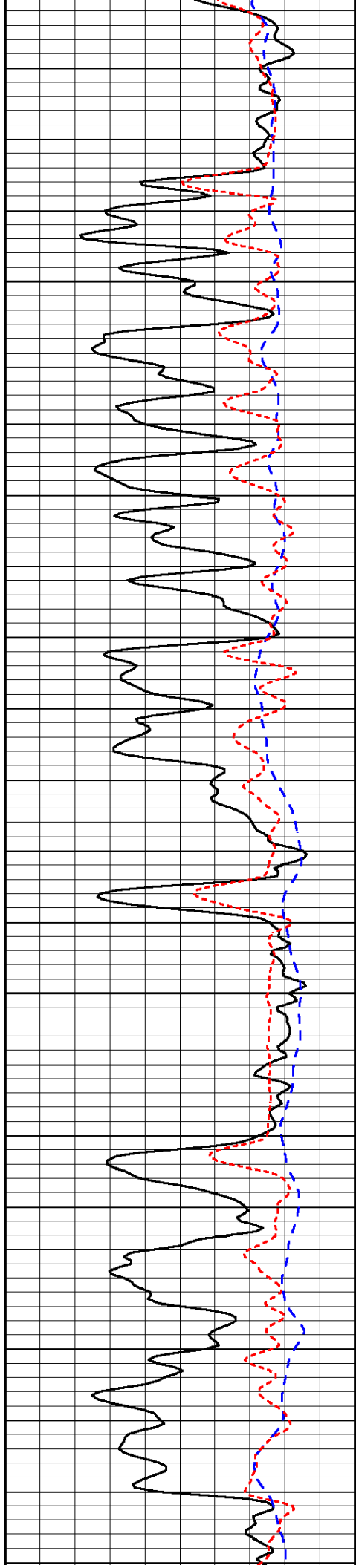
0	Gamma Ray	150
-200	SP (mV)	0
-160	Rxo / Rt	40

0.2	Deep Resistivity	2000
0.2	Medium Resistivity	2000
0.2	Shallow Resistivity	2000
15000	Line Tension	0

LSPD



LSPD

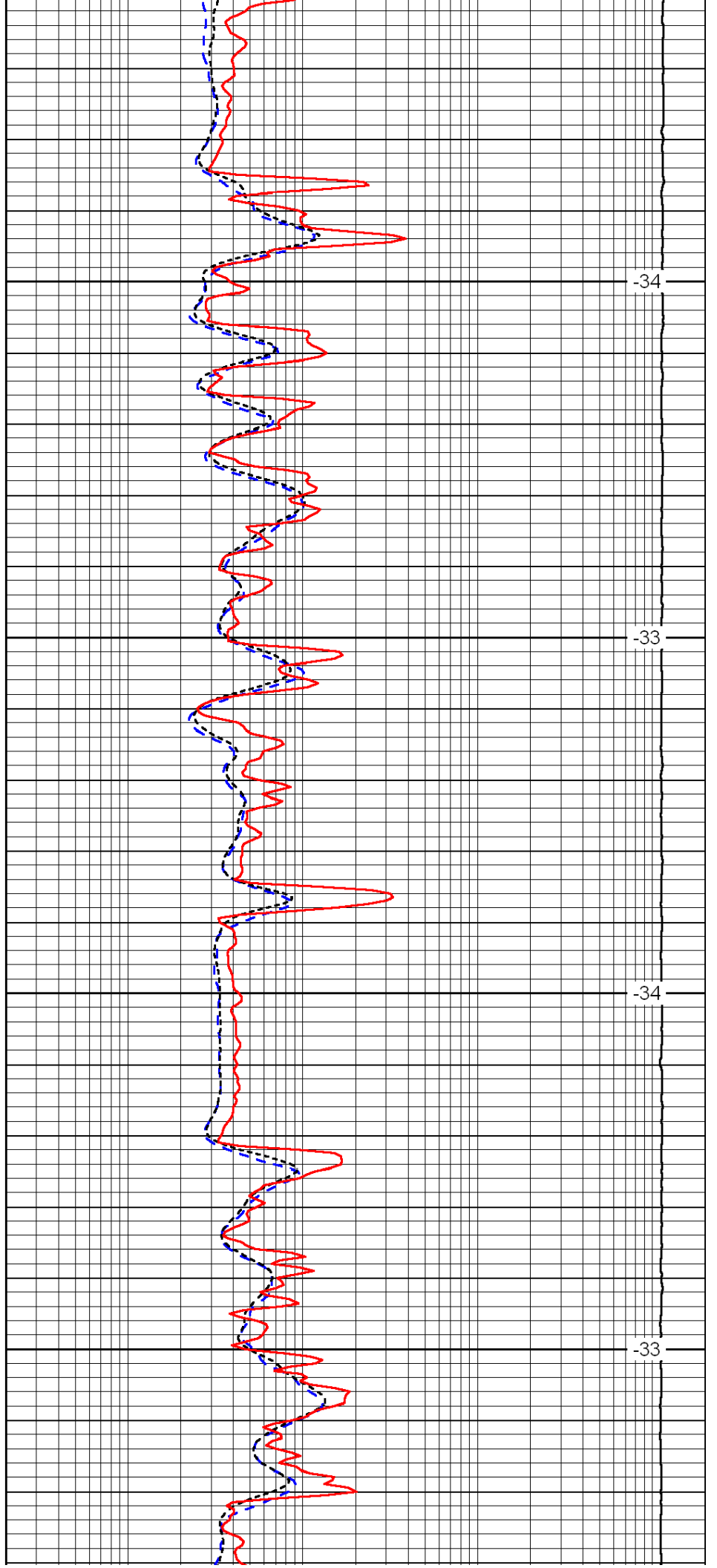


2650

2700

2750

2800

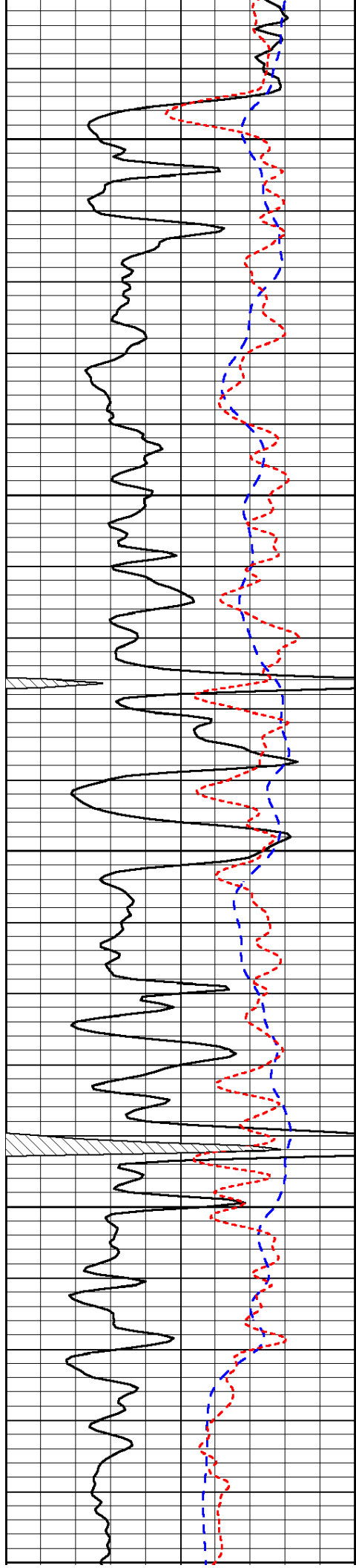


-34

-33

-34

-33



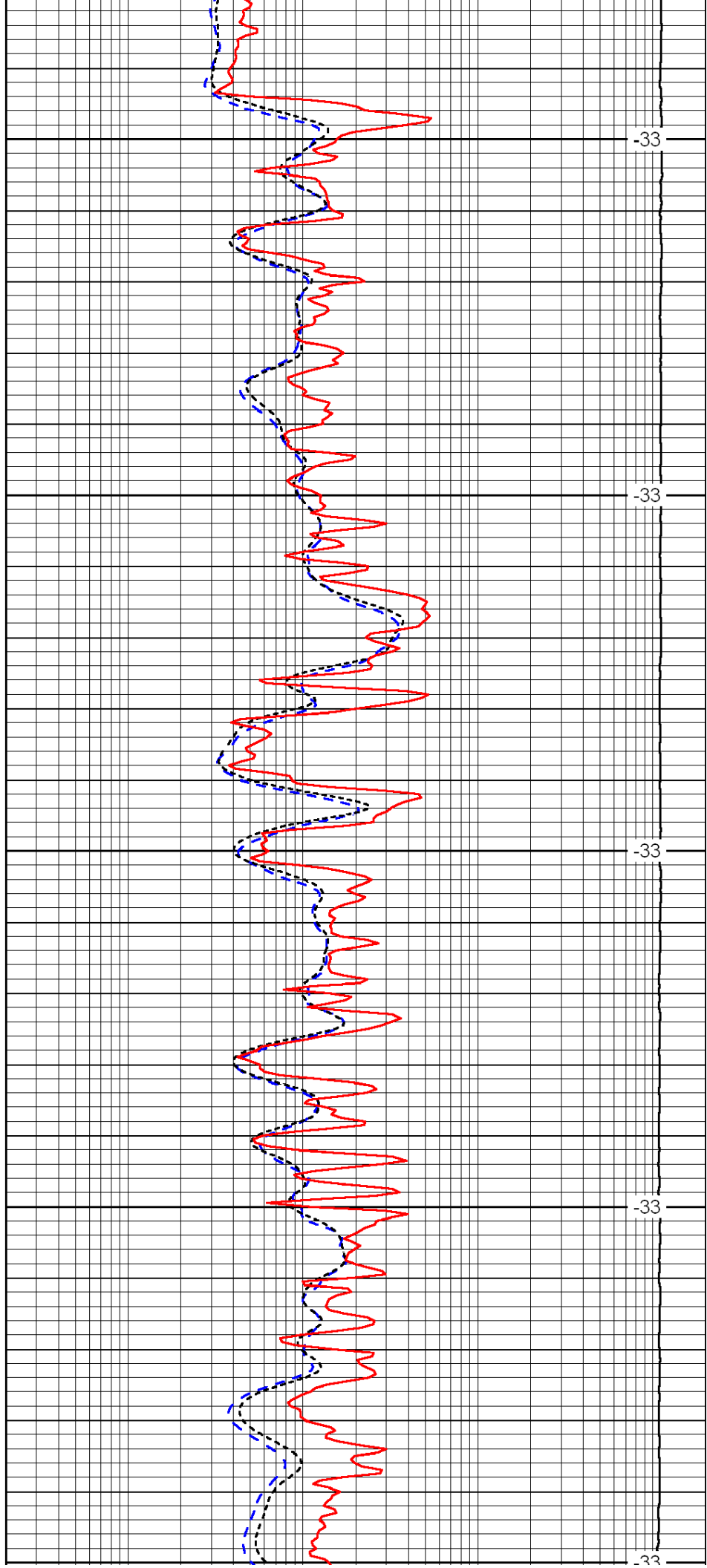
2850

2900

2950

3000

3050



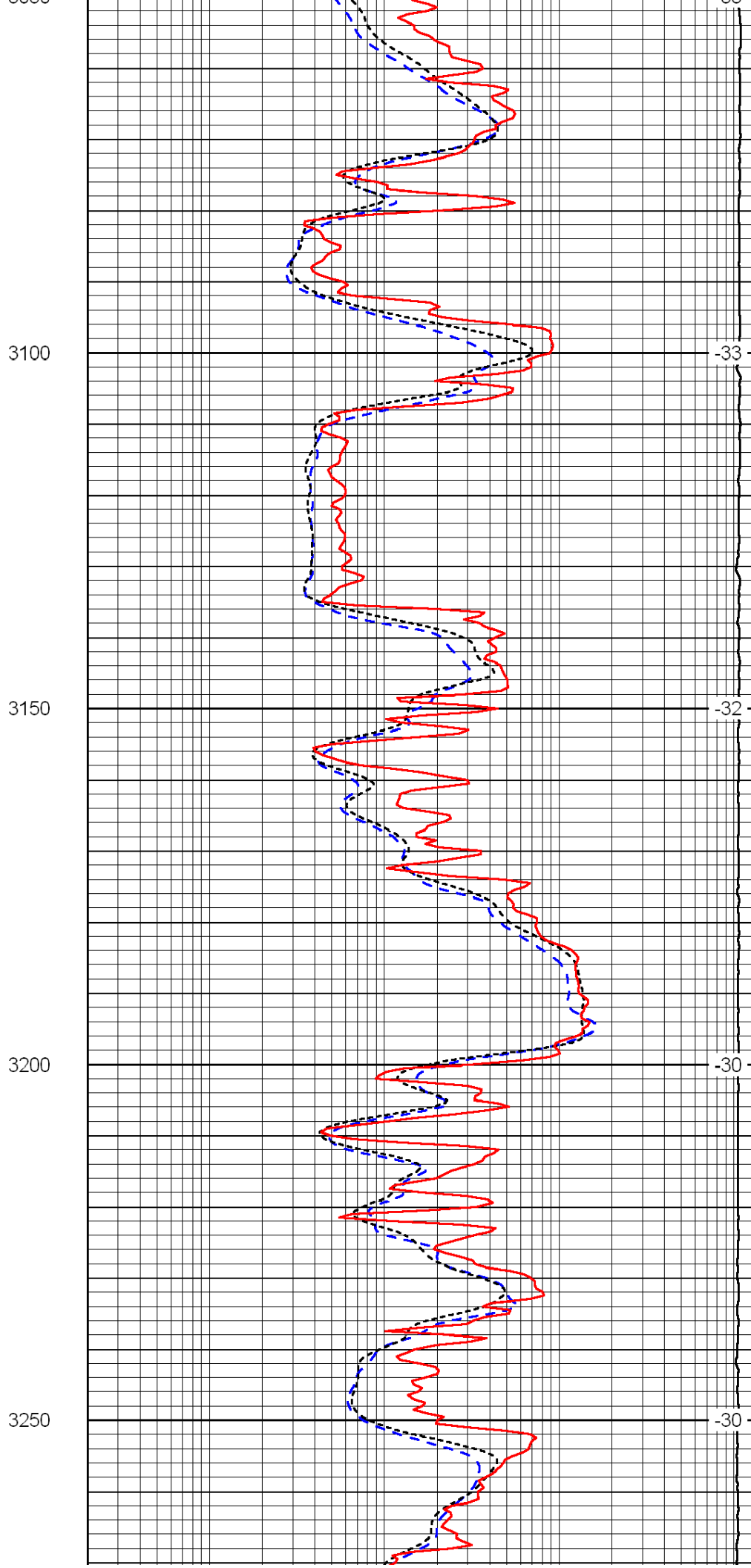
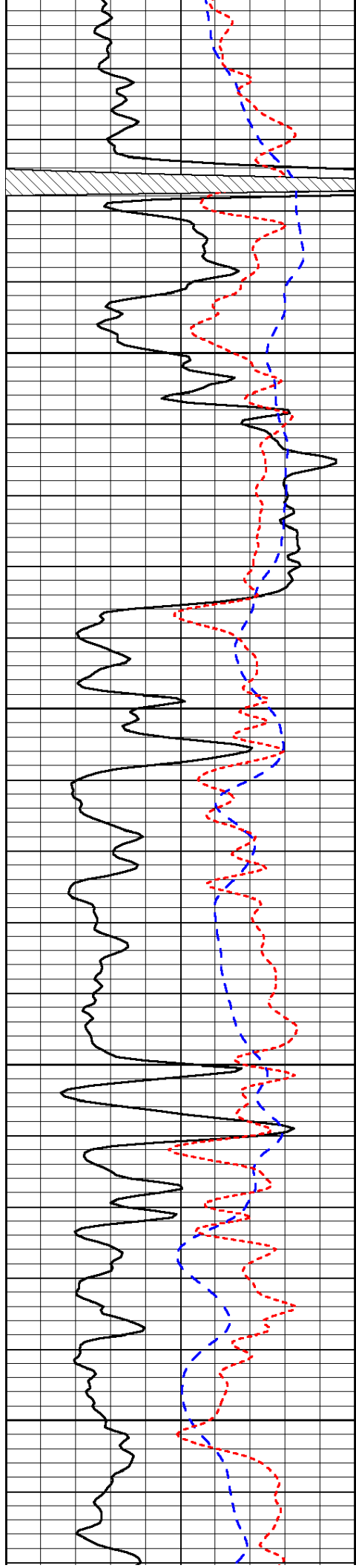
-33

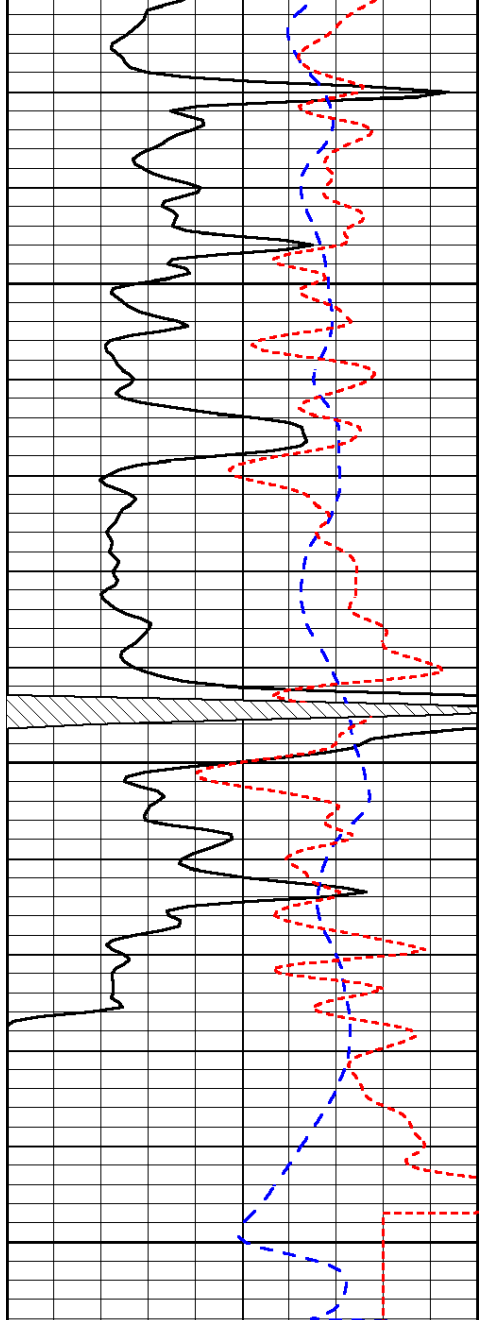
-33

-33

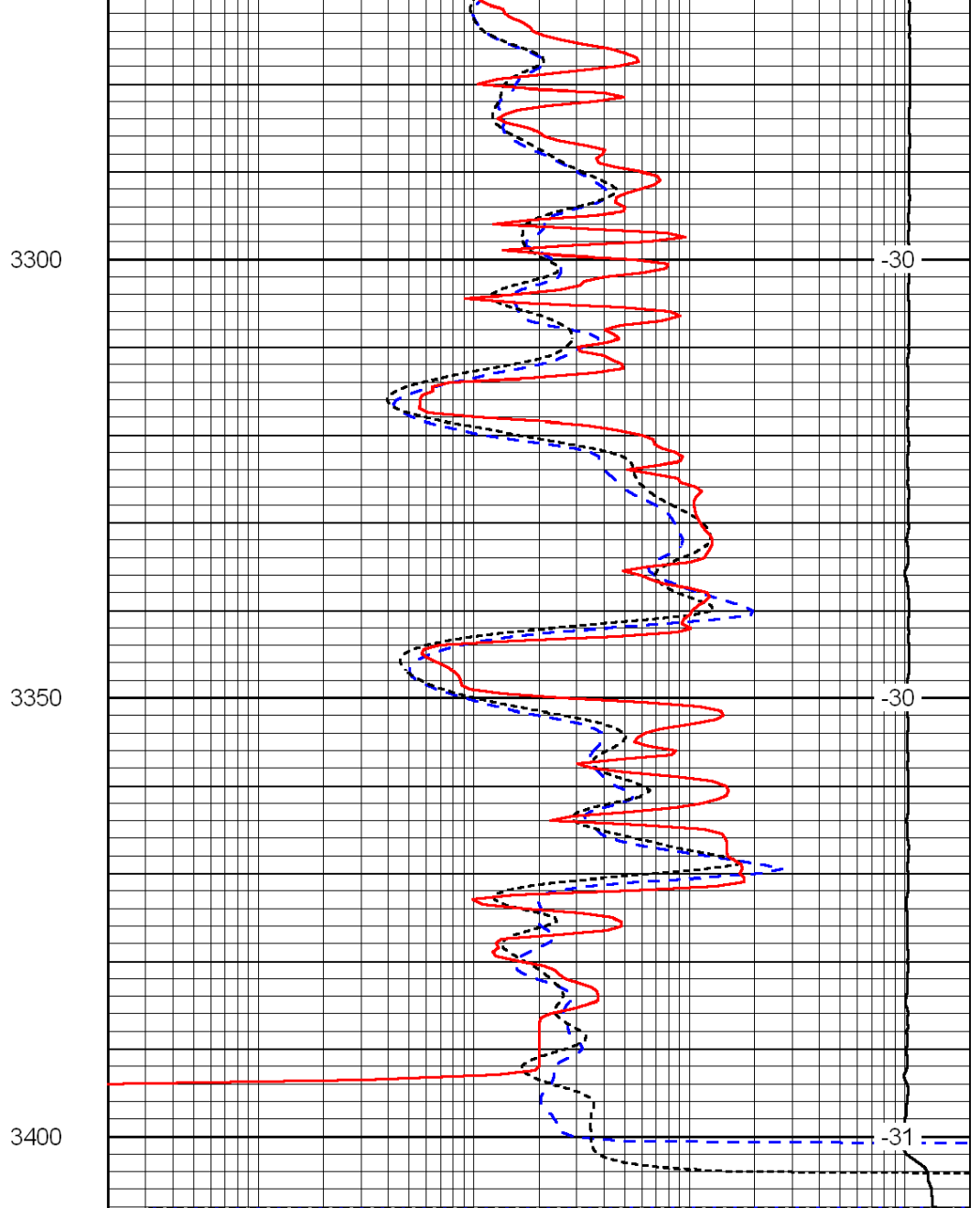
-33

-33





0	Gamma Ray	150
-200	SP (mV)	0
-160	Rxo / Rt	40



0.2	Deep Resistivity	2000
0.2	Medium Resistivity	2000
0.2	Shallow Resistivity	2000
15000	Line Tension	0

LSPD