



# Microresistivity Log

**DIGITAL LOG** (785) 625-3858

API No.	15-195-22,677-00-00		
Company	Murfin Drilling Company, Inc.		
Well	Baugher No. 1-20		
Field	Adair Northwest		
County	Trego	State	Kansas
Location	500' FNL & 2030' FEL		
Sec:	20	Twp:	12 S Rge: 21 W
Permanent Datum	Ground Level	Elevation	2289
Log Measured From	Kelly Bushing	5 Ft. Above Perm. Datum	
Drilling Measured From	Kelly Bushing		
		Other Services	CNL/CDL DIL/BHCS
		Elevation	K.B. 2294 D.F. 2289 G.L. 2289

Date	8/28/2010	
Run Number	Two	
Depth Driller	4100	
Depth Logger	4100	
Bottom Logged Interval	4099	
Top Log Interval	3200	
Casing Driller	8.625 @ 219	
Casing Logger	218	
Bit Size	7.875	
Type Fluid in Hole	Chemical	
Salinity, ppm CL	5.100	
Density / Viscosity	9.1	58
pH / Fluid Loss	11.5	6.4
Source of Sample	Flowline	
Rm @ Meas. Temp	.70	@ 70
Rmf @ Meas. Temp	.53	@ 70
Rmc @ Meas. Temp	.95	@ 70
Source of Rmf / Rmc	Charts	
Rm @ BHT	.41	@ 119
Operating Rig Time	5 1/2 Hours	
Max Rec. Temp. F	119	
Equipment Number	4	
Location	Hays	
Recorded By	K. Bange	
Witnessed By	Paul Gunzelman	

<<< Fold Here >>>

All interpretations are opinions based on inferences from electrical or other measurements and we cannot and do not guarantee the accuracy or correctness of any interpretation, and we shall not, except in the case of gross or willful negligence on our part, be liable or responsible for any loss, costs, damages, or expenses incurred or sustained by anyone resulting from any interpretation made by any of our officers, agents or employees. These interpretations are also subject to our general terms and conditions set out in our current Price Schedule.

**Comments**

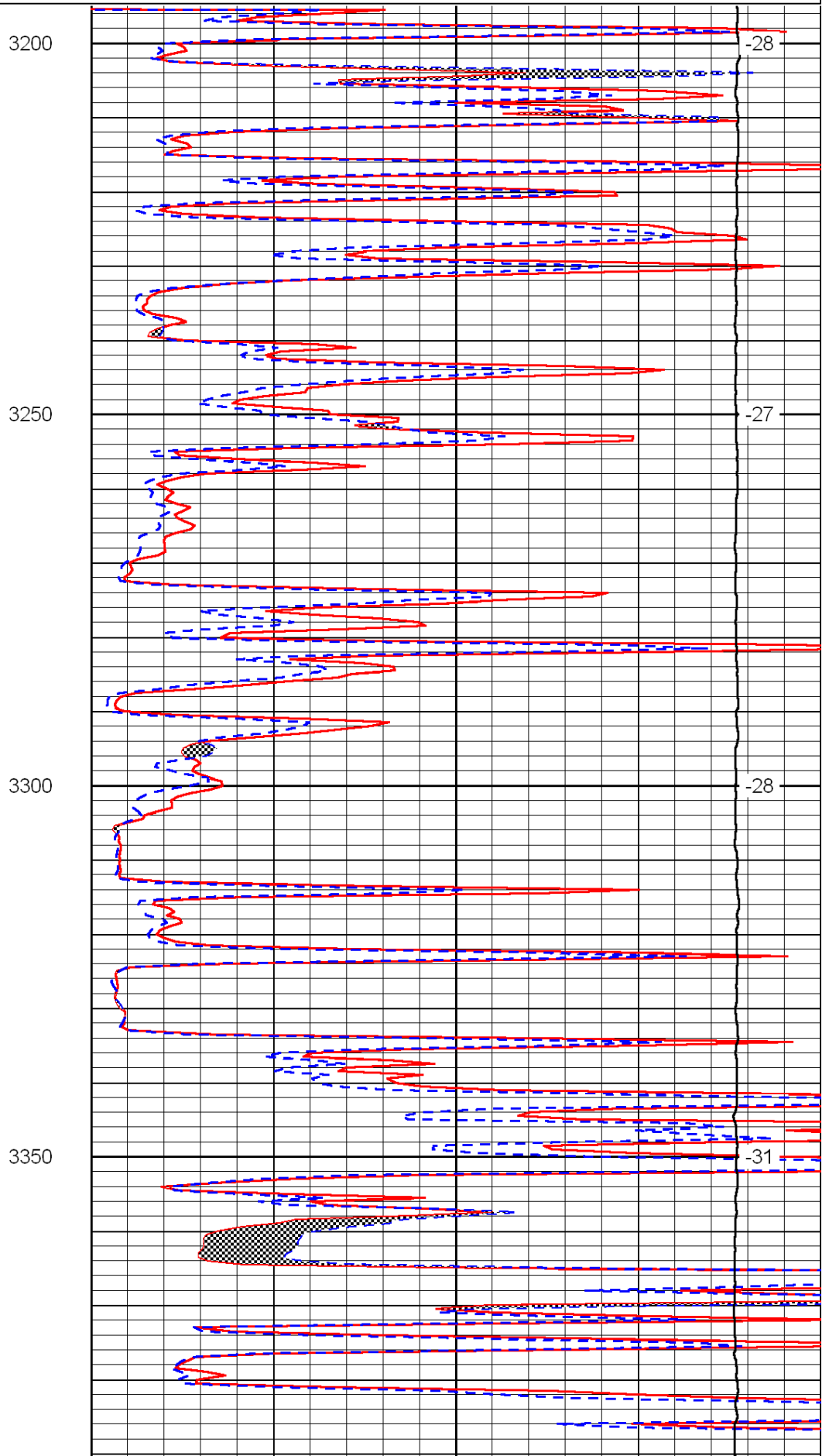
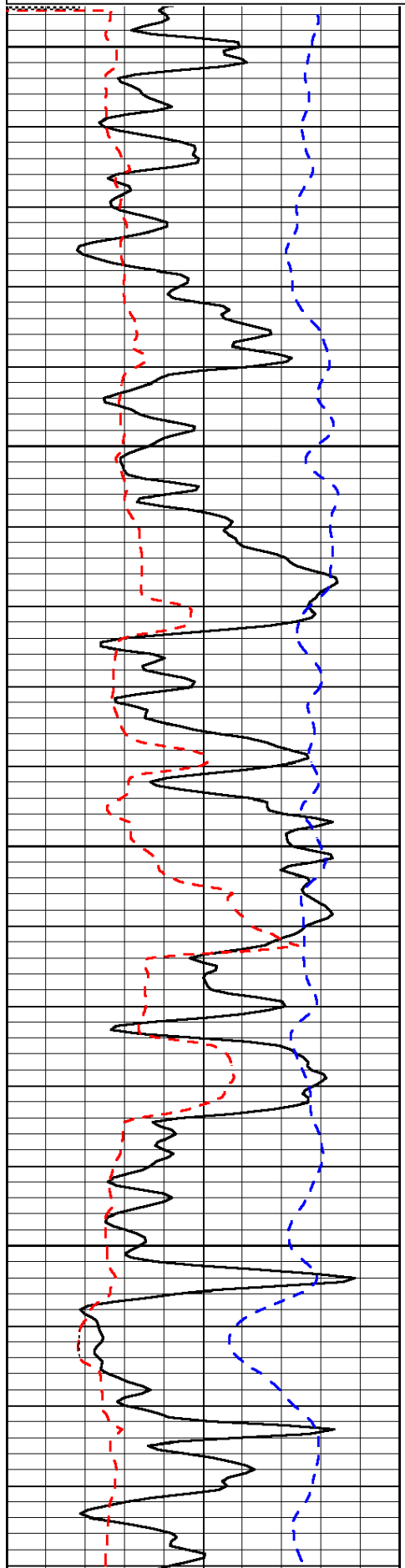
Thank you for using Log-Tech, Inc.  
 (785) 625-3858  
  
 I-70 and Riga rd, 2 1/2 N to J rd, 1 1/2 W, S into

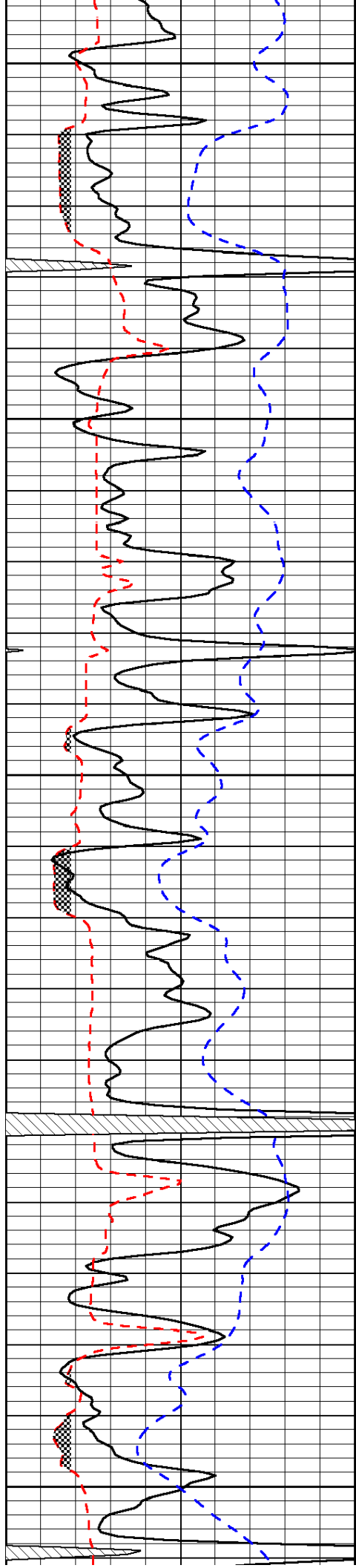
Database File: c:\warrior\data\murfin\_baugher no. 1-20\murfn082810hd.db  
 Dataset Pathname: dil\murfin2in  
 Presentation Format: micro  
 Dataset Creation: Sat Aug 28 10:59:15 2010  
 Charted by: Depth in Feet scaled 1:240

0	Gamma Ray	150
6	Micro Log Caliper (GAPI)	16
-200	SP (mV)	0

0	Micro Inverse 1 X 1	40
0	Micro Normal 2"	40
15000	Line Weight	0

LSPD





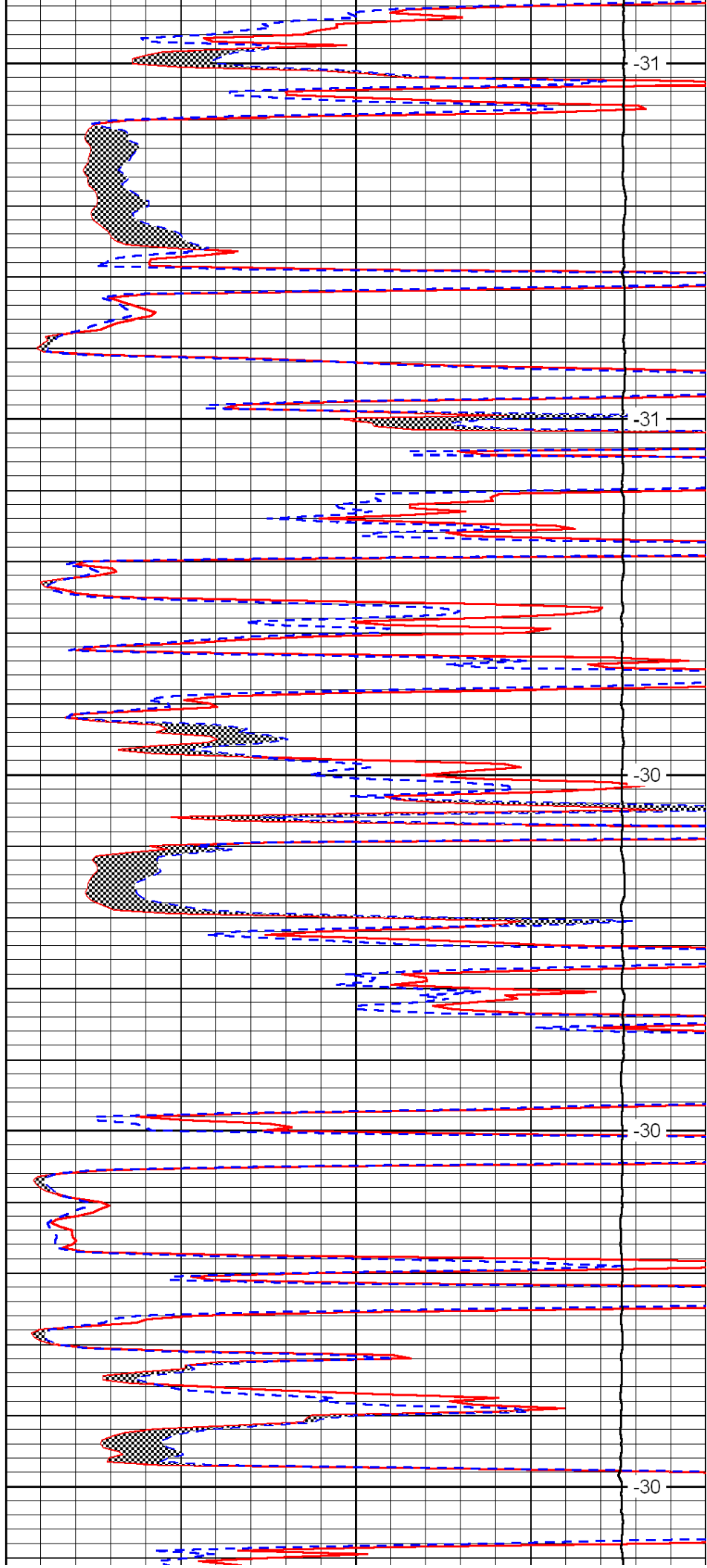
3400

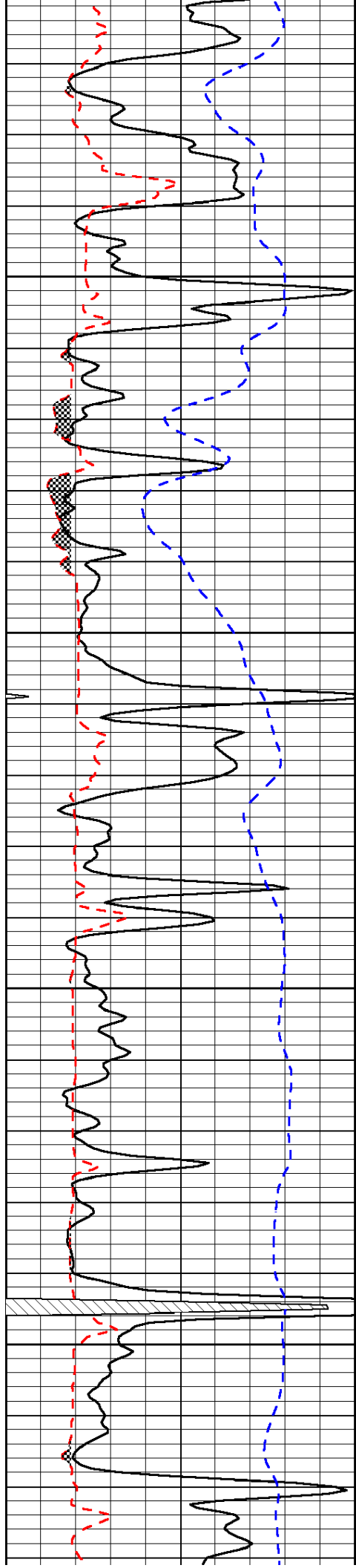
3450

3500

3550

3600



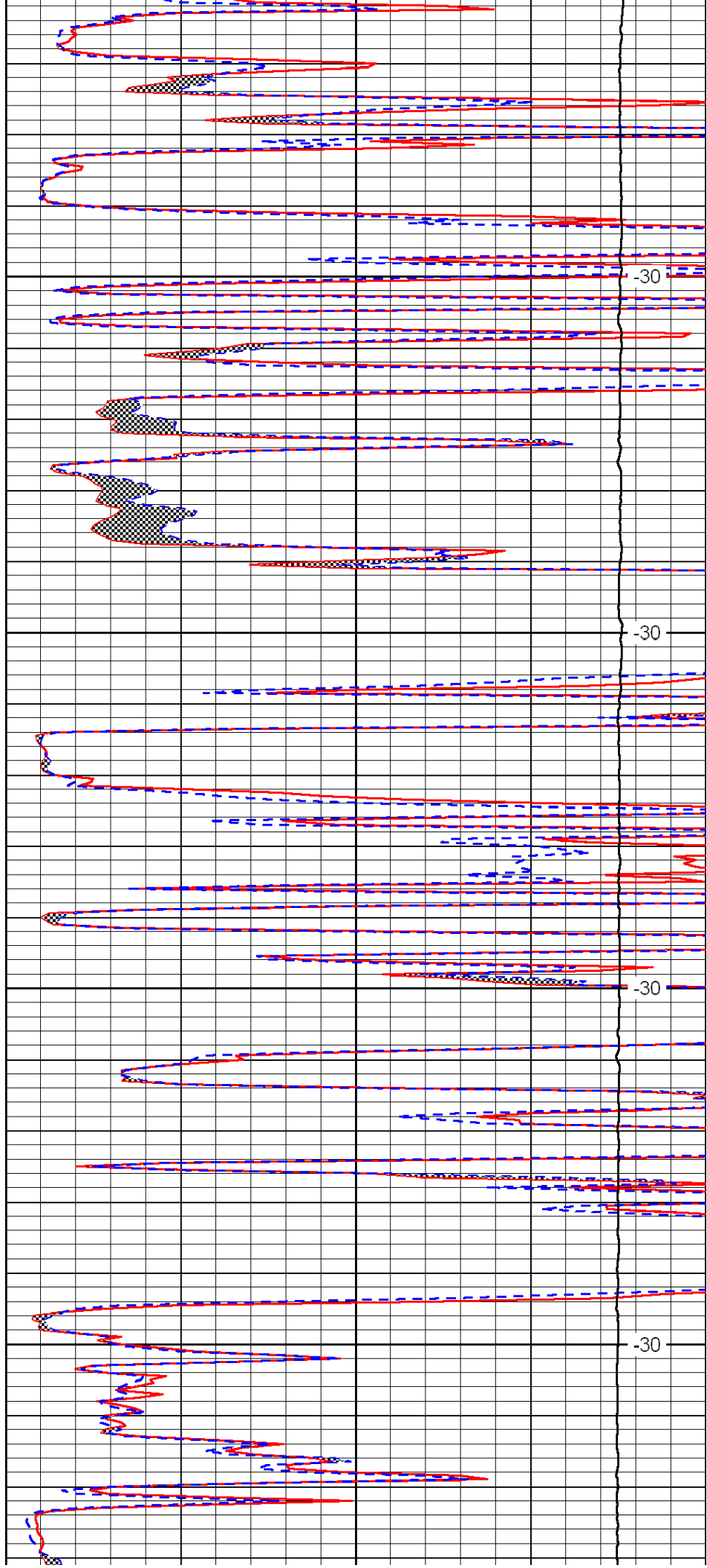


3650

3700

3750

3800

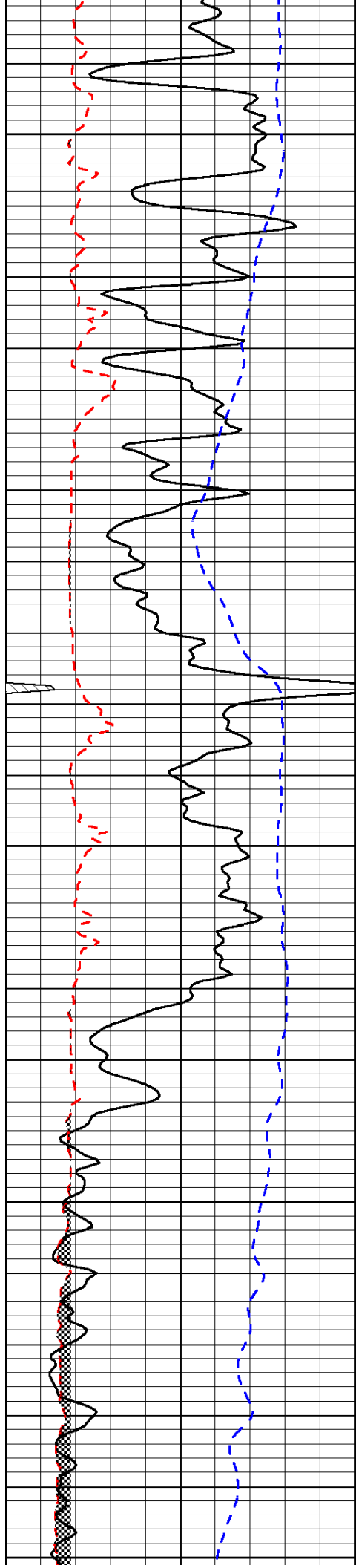


-30

-30

-30

-30



3850

-30

3900

-30

3950

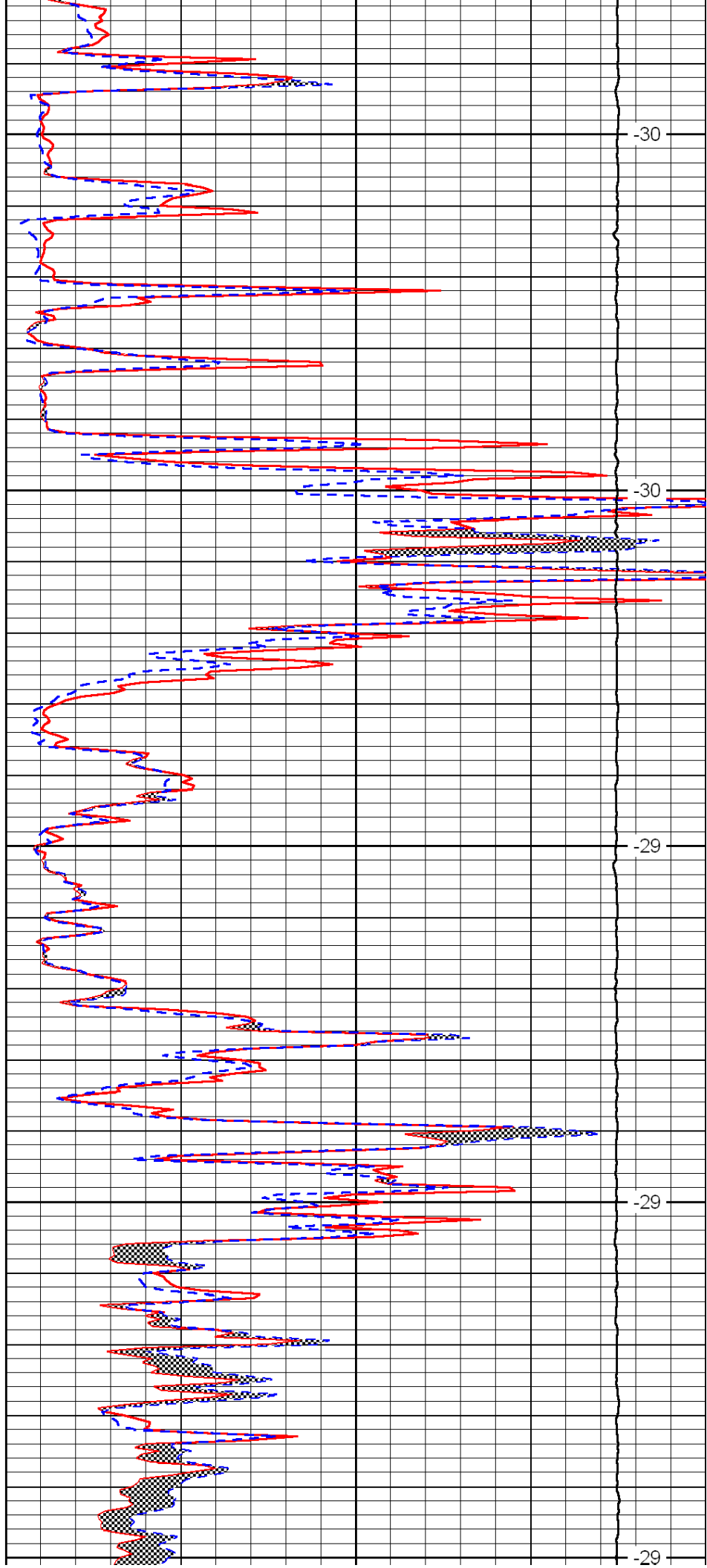
-29

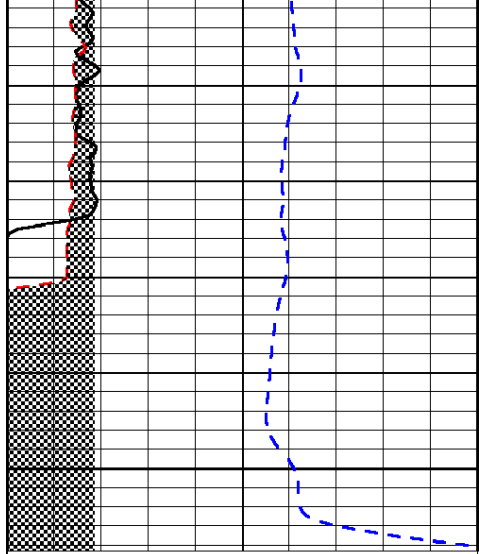
4000

-29

4050

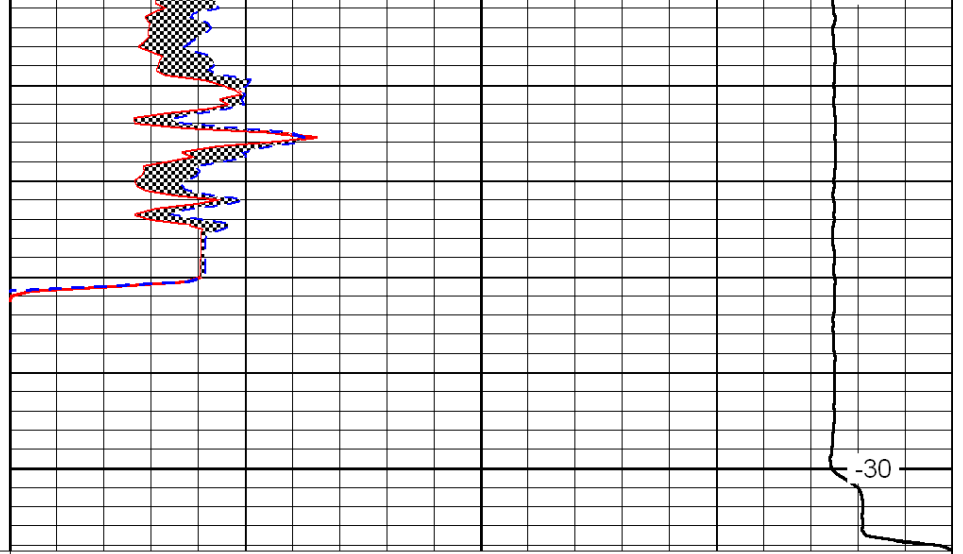
-29





4100

0	Gamma Ray	150
6	Micro Log Caliper (GAPI)	16
-200	SP (mV)	0



-30

0	Micro Inverse 1 X 1	40
0	Micro Normal 2''	40
15000	Line Weight	0

LSPD