



**Borehole Compensated
Sonic Log**

DIGITAL LOG (785) 625-3858

API No.	15-195-22,677-00-00		
Company	Murfin Drilling Company, Inc.		
Well	Baugher No. 1-20		
Field	Adair Northwest		
County	Trego	State	Kansas
Location	500' FNL & 2030' FEL		
Sec: 20	Twp: 12 S	Rge: 21 W	Other Services CNL/CDL MEL/DIL
Permanent Datum	Ground Level	Elevation 2289	Elevation
Log Measured From	Kelly Bushing	5 Ft. Above Perm. Datum	K.B. 2294
Drilling Measured From	Kelly Bushing		D.F. G.L. 2289

Date	8/28/2010		
Run Number	Two		
Type Log	BHC Sonic		
Depth Driller	4100		
Depth Logger	4100		
Bottom Logged Interval	4089		
Top Logged Interval	200		
Type Fluid In Hole	Chemical		
Salinity, PPM CL	5.100		
Density	9.1		
Level	Full		
Max. Rec. Temp. F	119		
Operating Rig Time	5 1/2 Hours		
Equipment -- Location	4 Hays		
Recorded By	K. Bange		
Witnessed By	Paul Gunzelman		

Run No.	Bit	Borehole Record		Casing Record	
		From	To	From	To
1	12.25	00	219	8.625	24#
2	7.875	219	4100		

<<< Fold Here >>>

All interpretations are opinions based on inferences from electrical or other measurements and we cannot and do not guarantee the accuracy or correctness of any interpretation, and we shall not, except in the case of gross or willful negligence on our part, be liable or responsible for any loss, costs, damages, or expenses incurred or sustained by anyone resulting from any interpretation made by any of our officers, agents or employees. These interpretations are also subject to our general terms and conditions set out in our current Price Schedule.

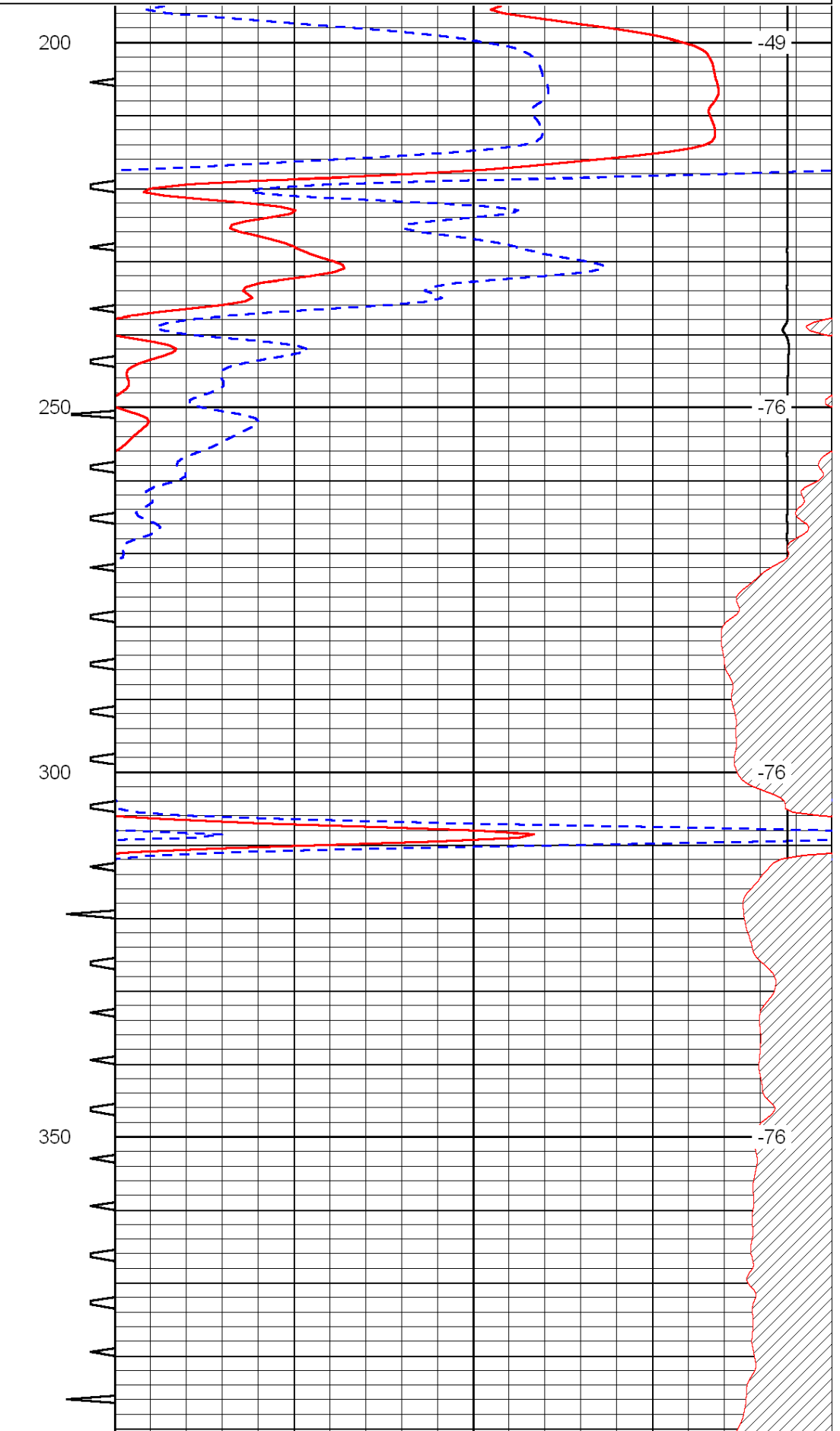
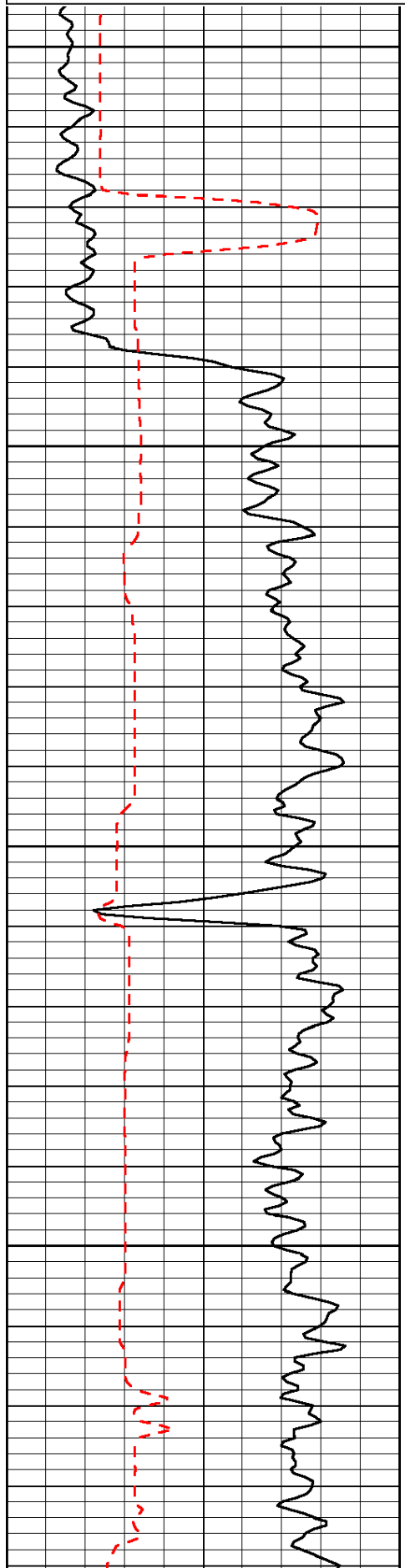
Comments

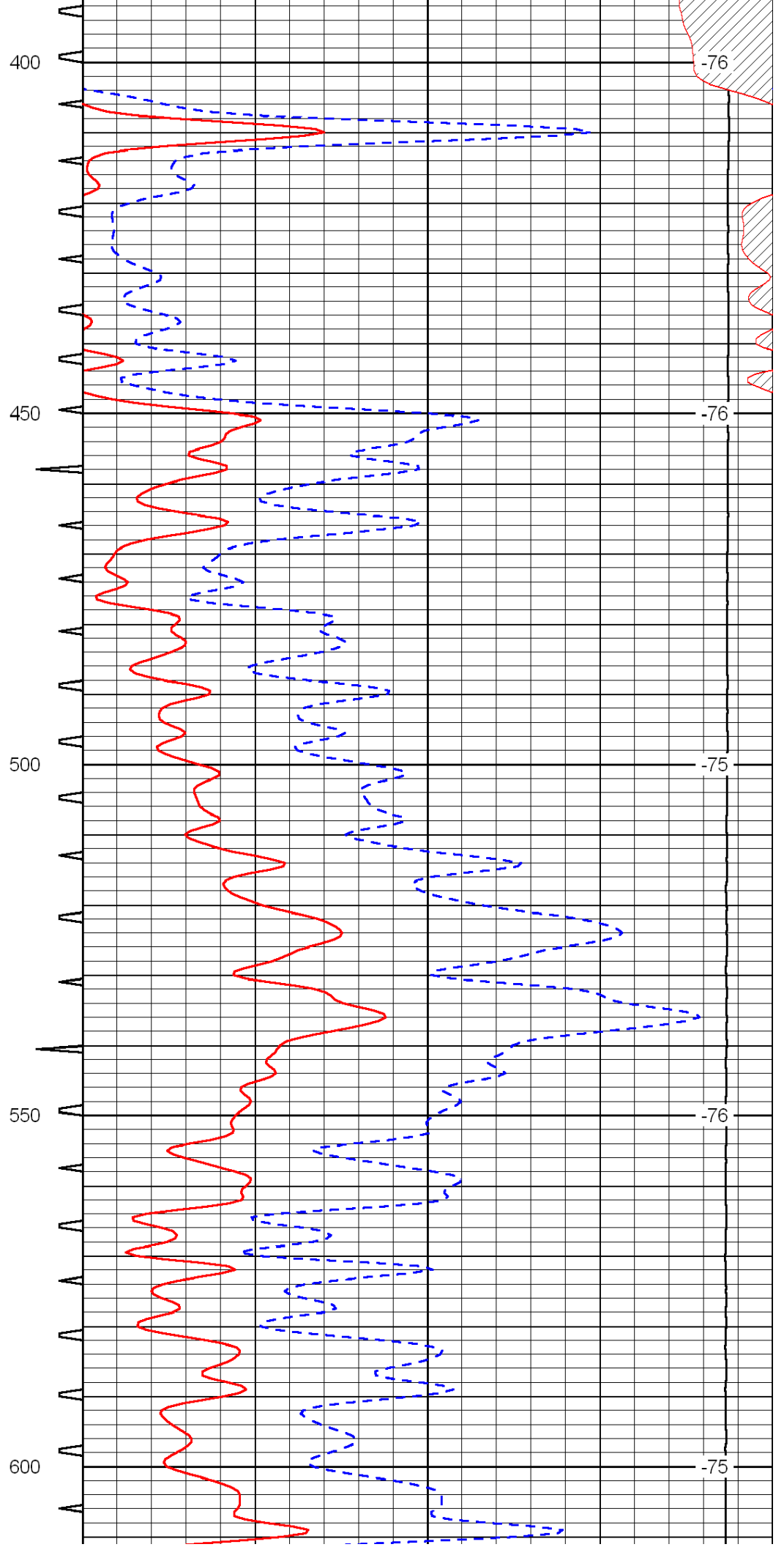
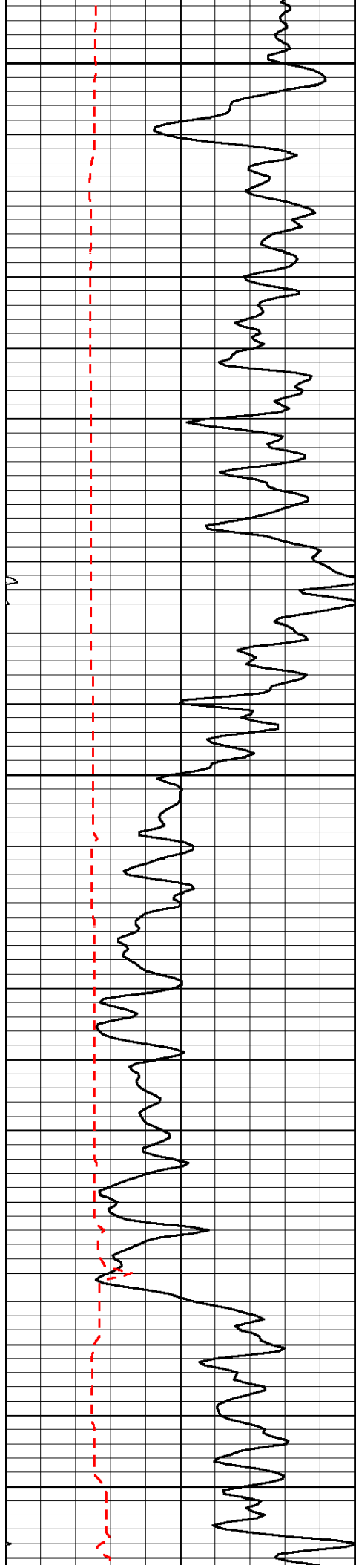
Thank you for using Log-Tech, Inc.
(785) 625-3858

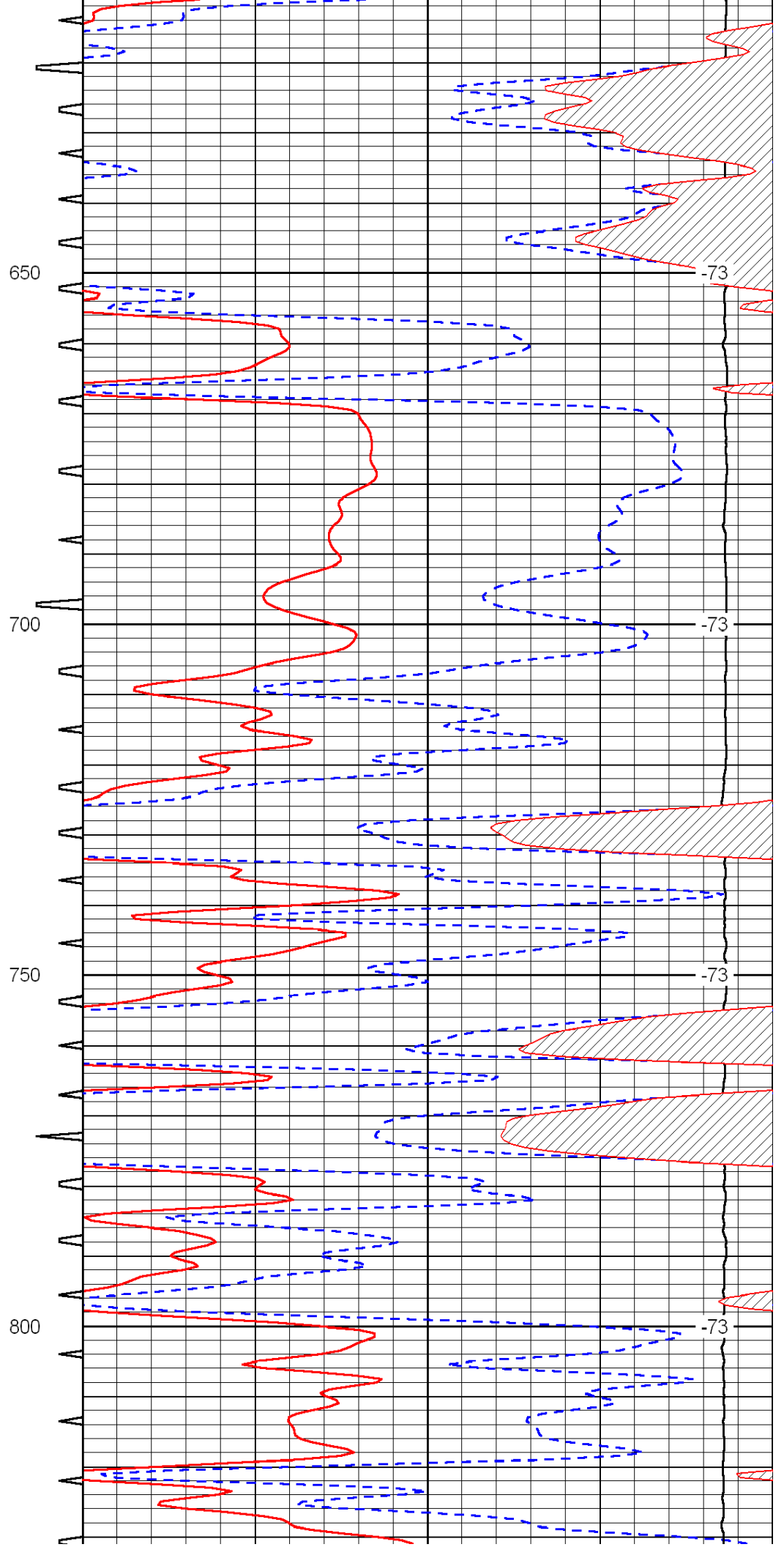
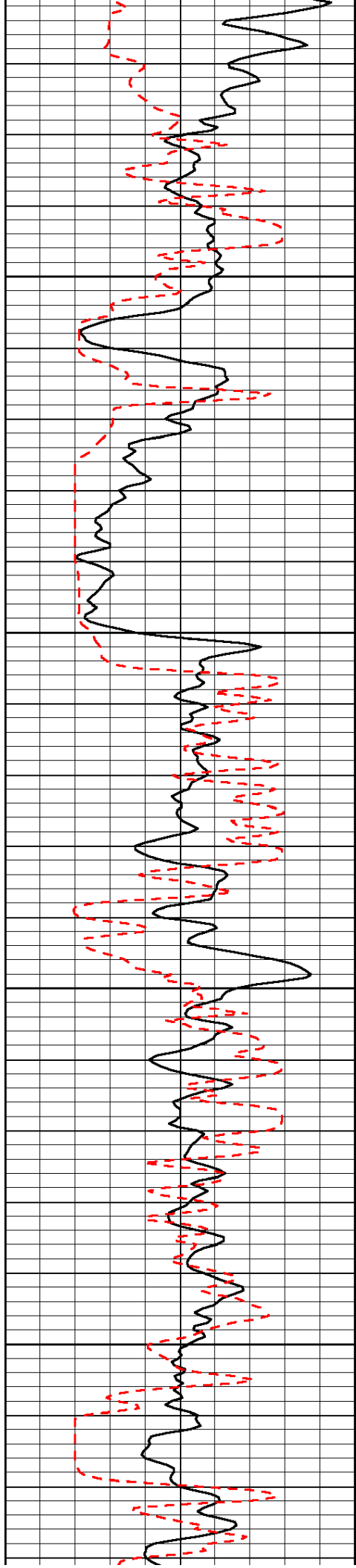
I-70 and Riga rd, 2 1/2 N to J rd, 1 1/2 W, S into

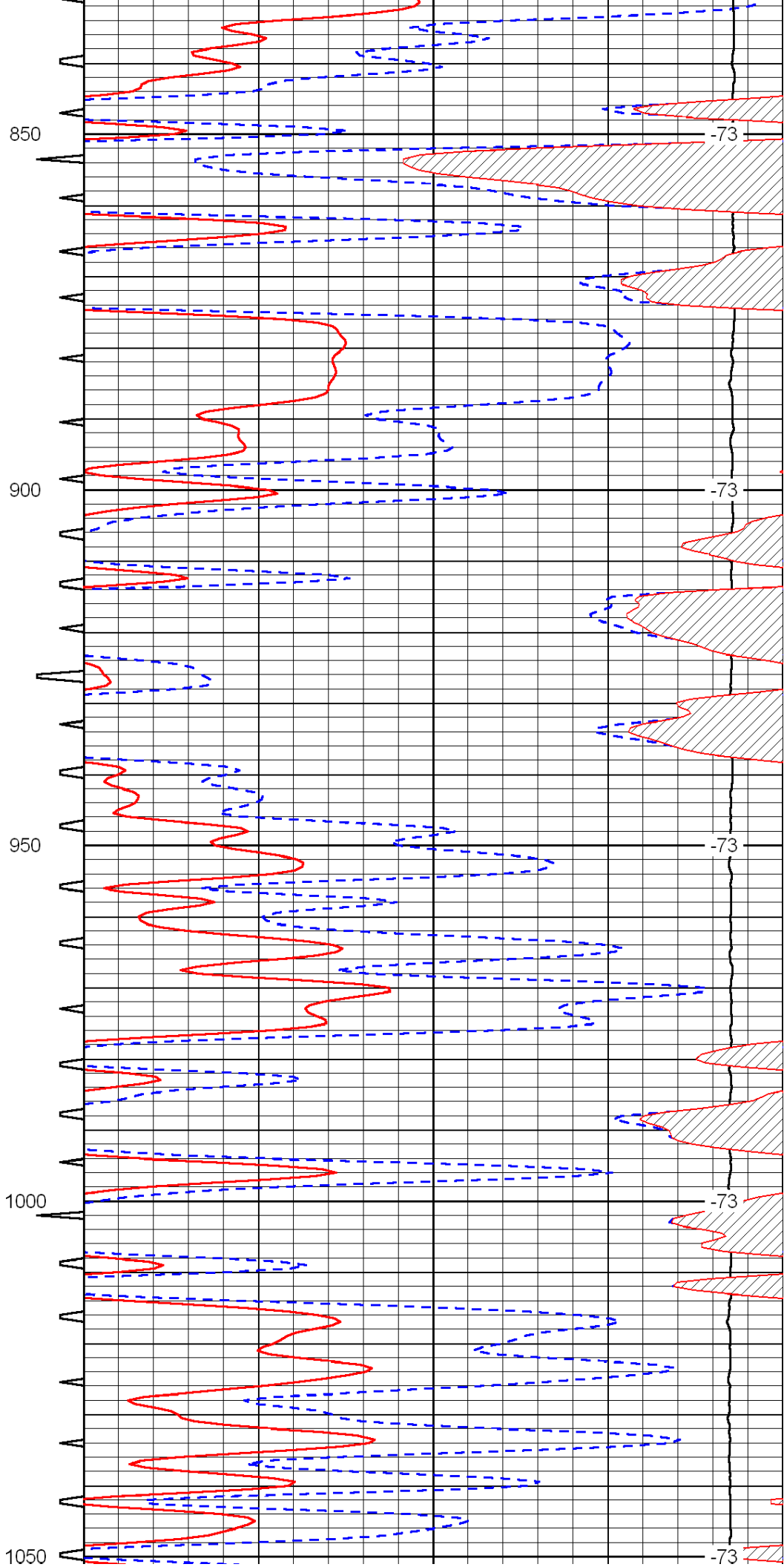
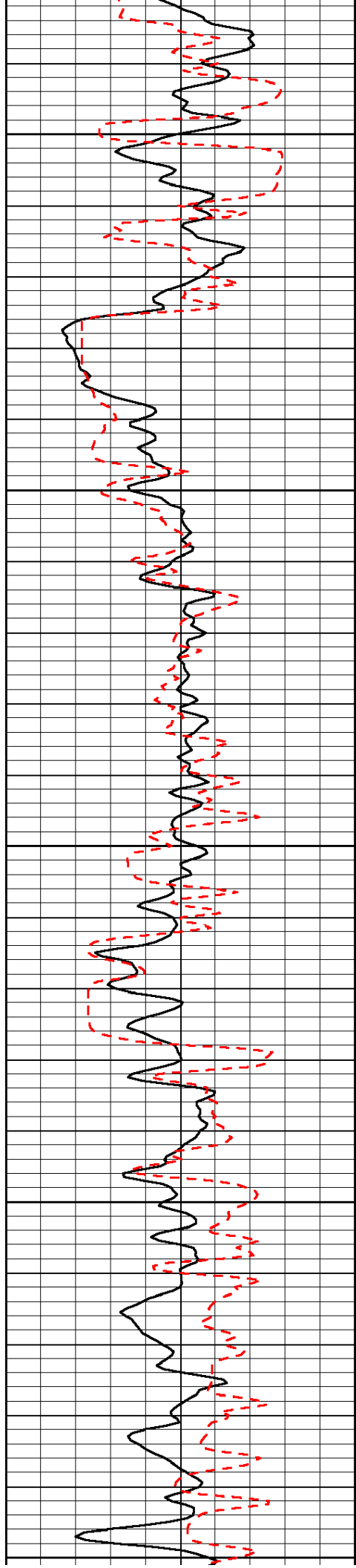
0	Gamma Ray	150	Sonic Int	140	Delta Time (usec/ft)	40
150	Gamma Ray	300	5	0	SPOR	-10
6	Caliper (GAPI)	16		15000	LTEN (lb)	0

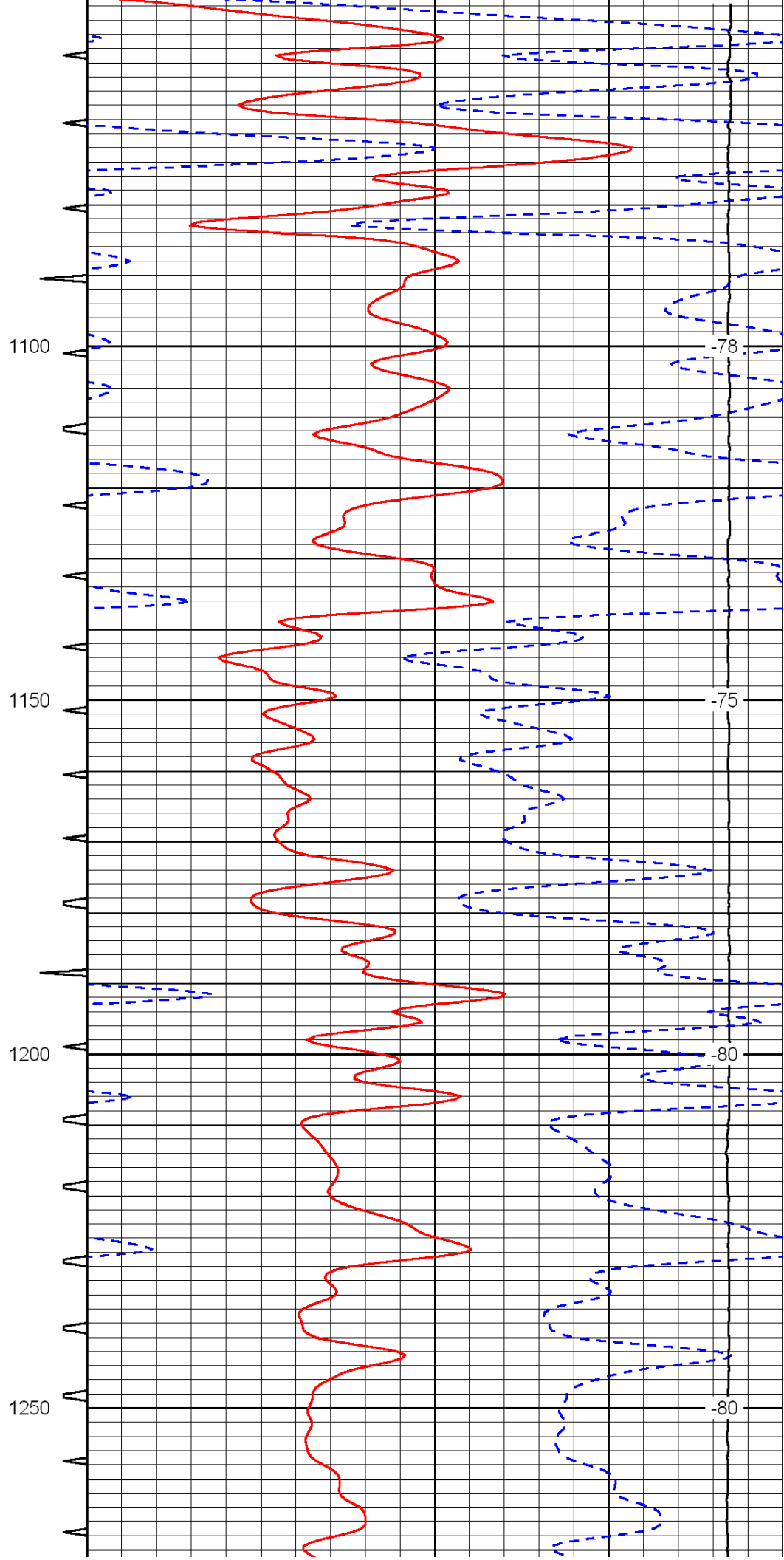
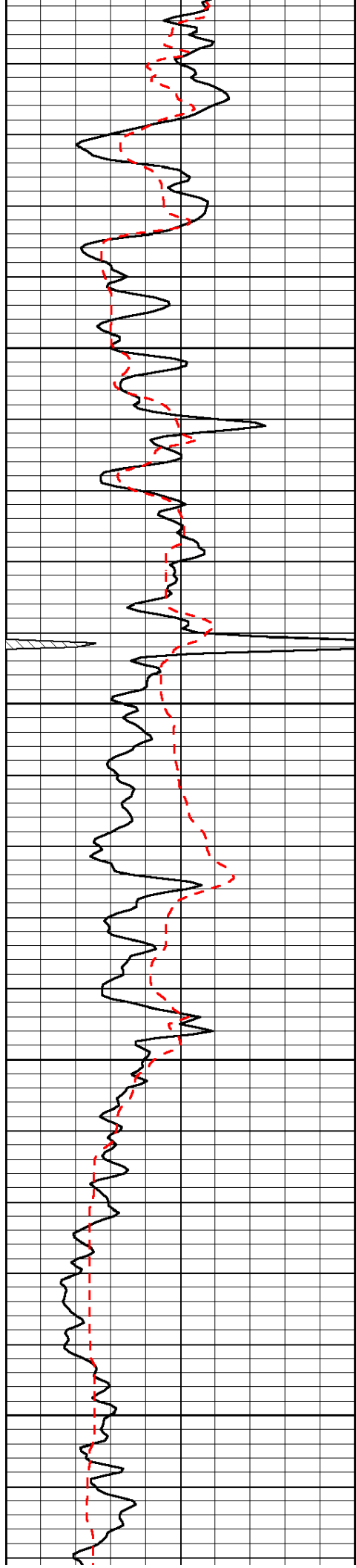
LSPD

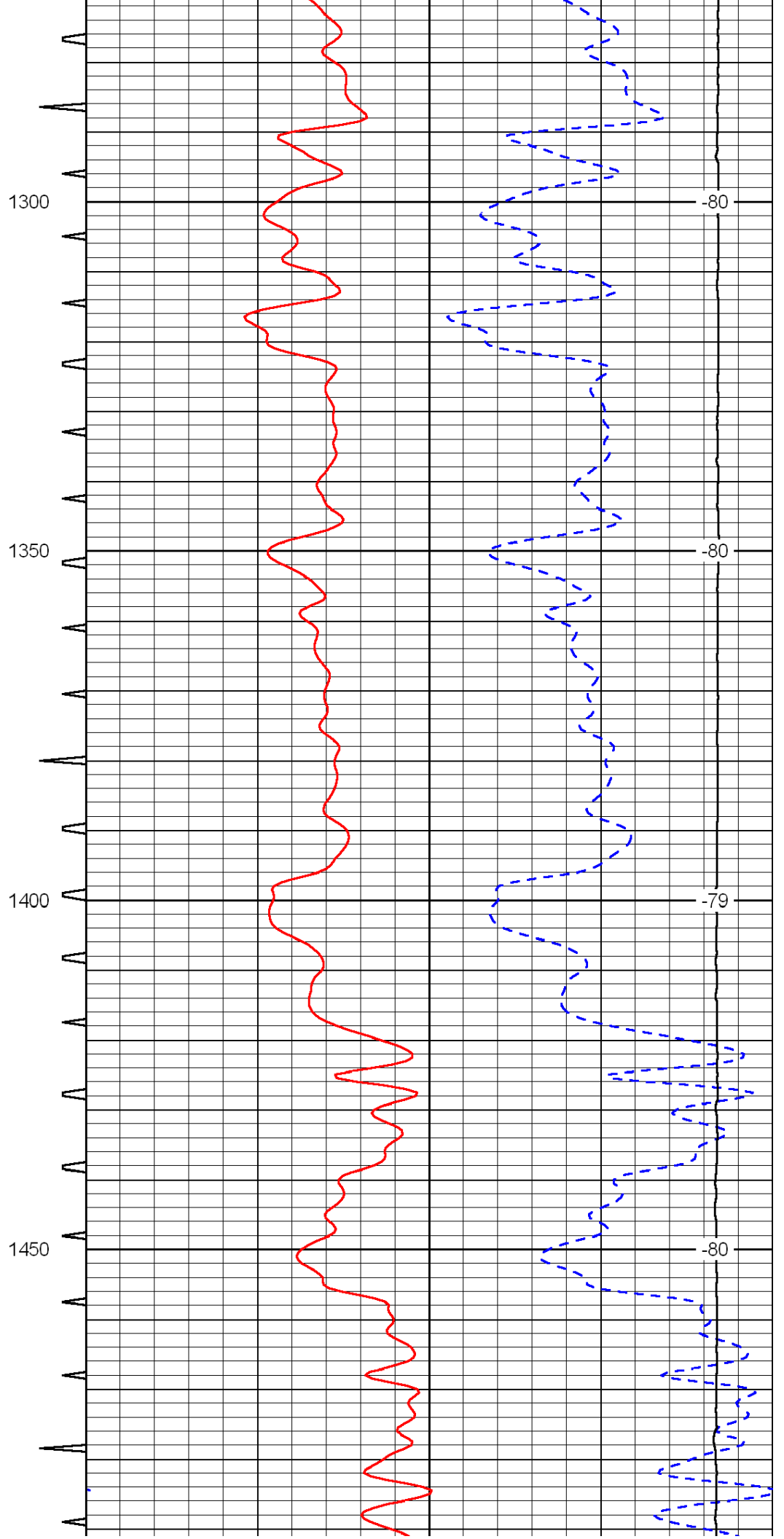
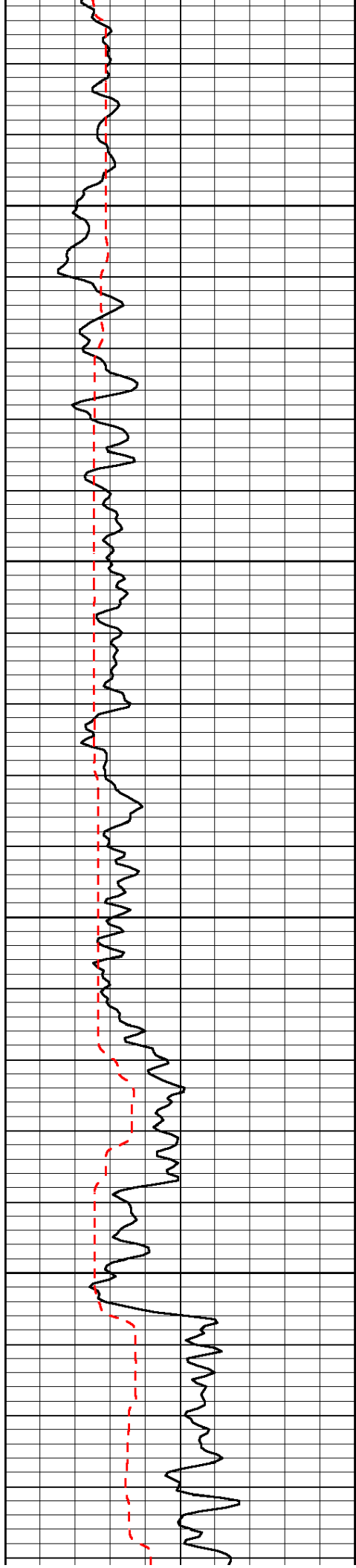


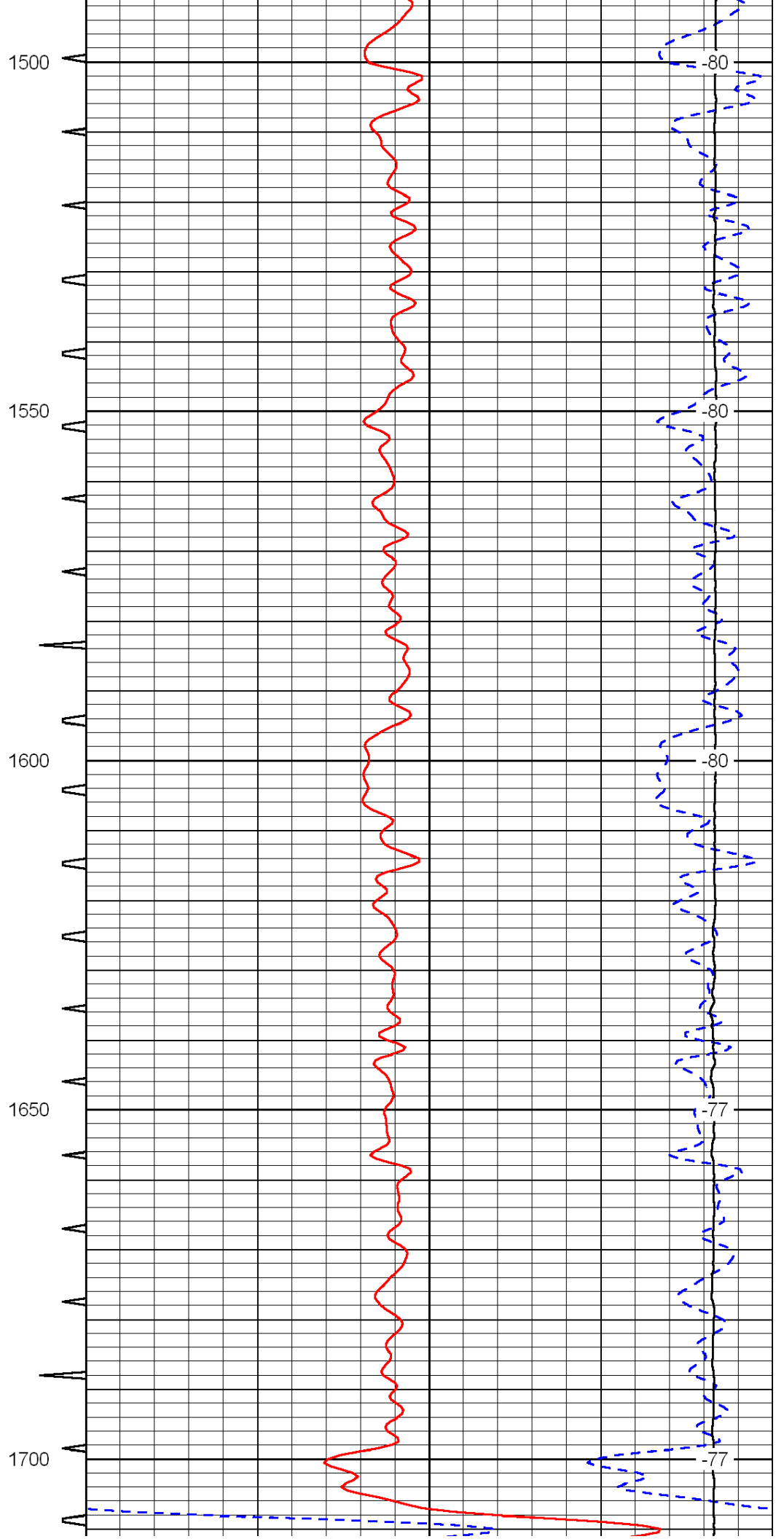
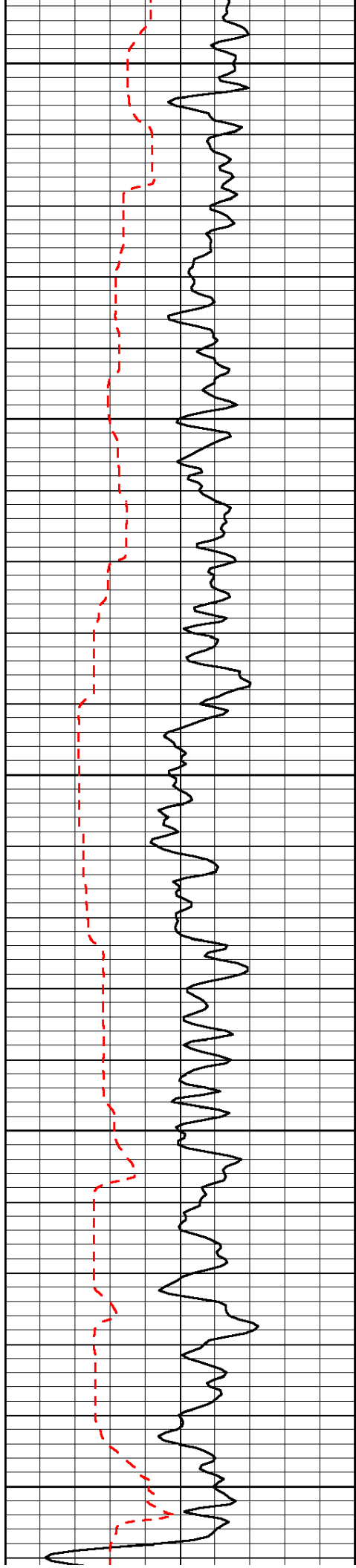


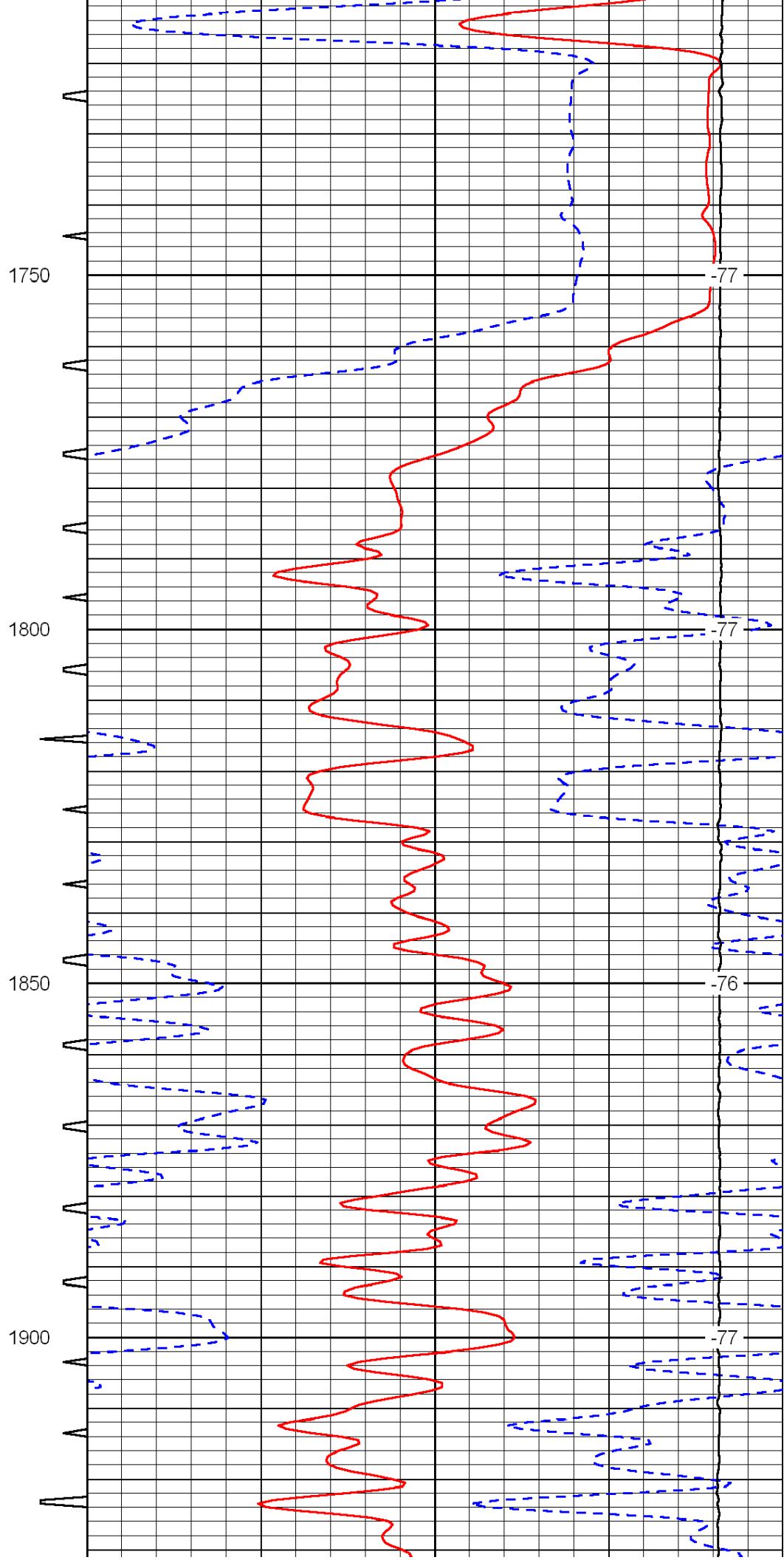
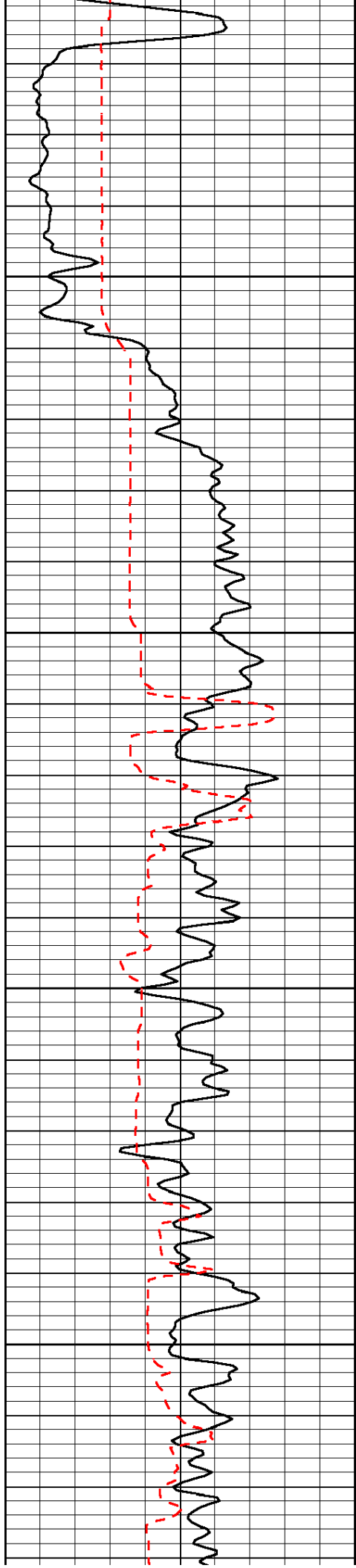


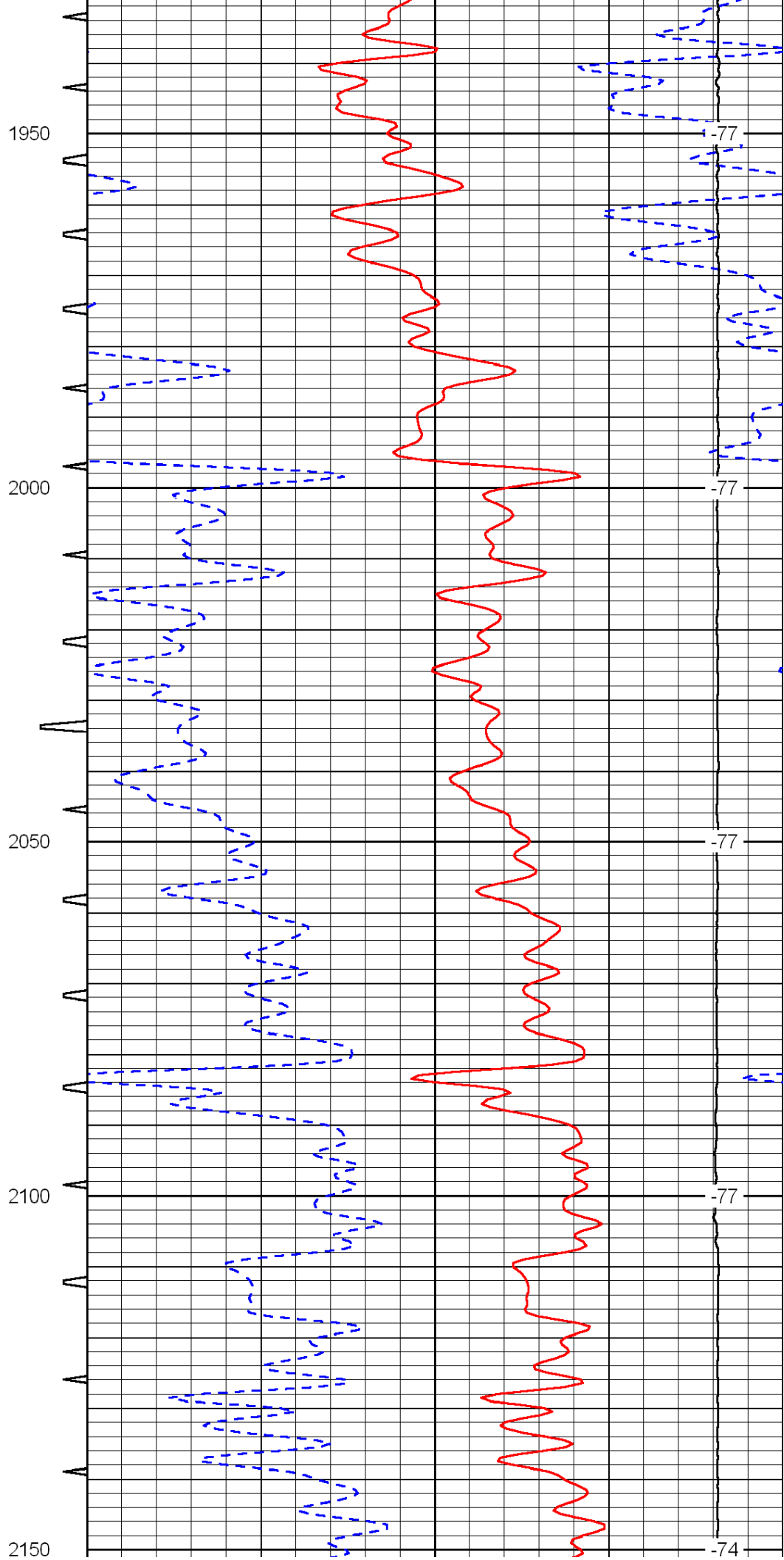
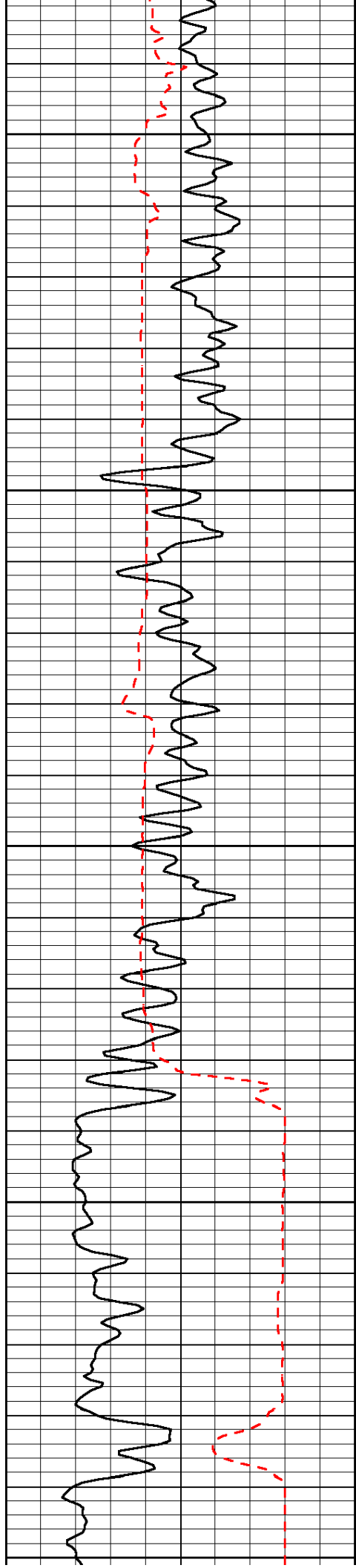


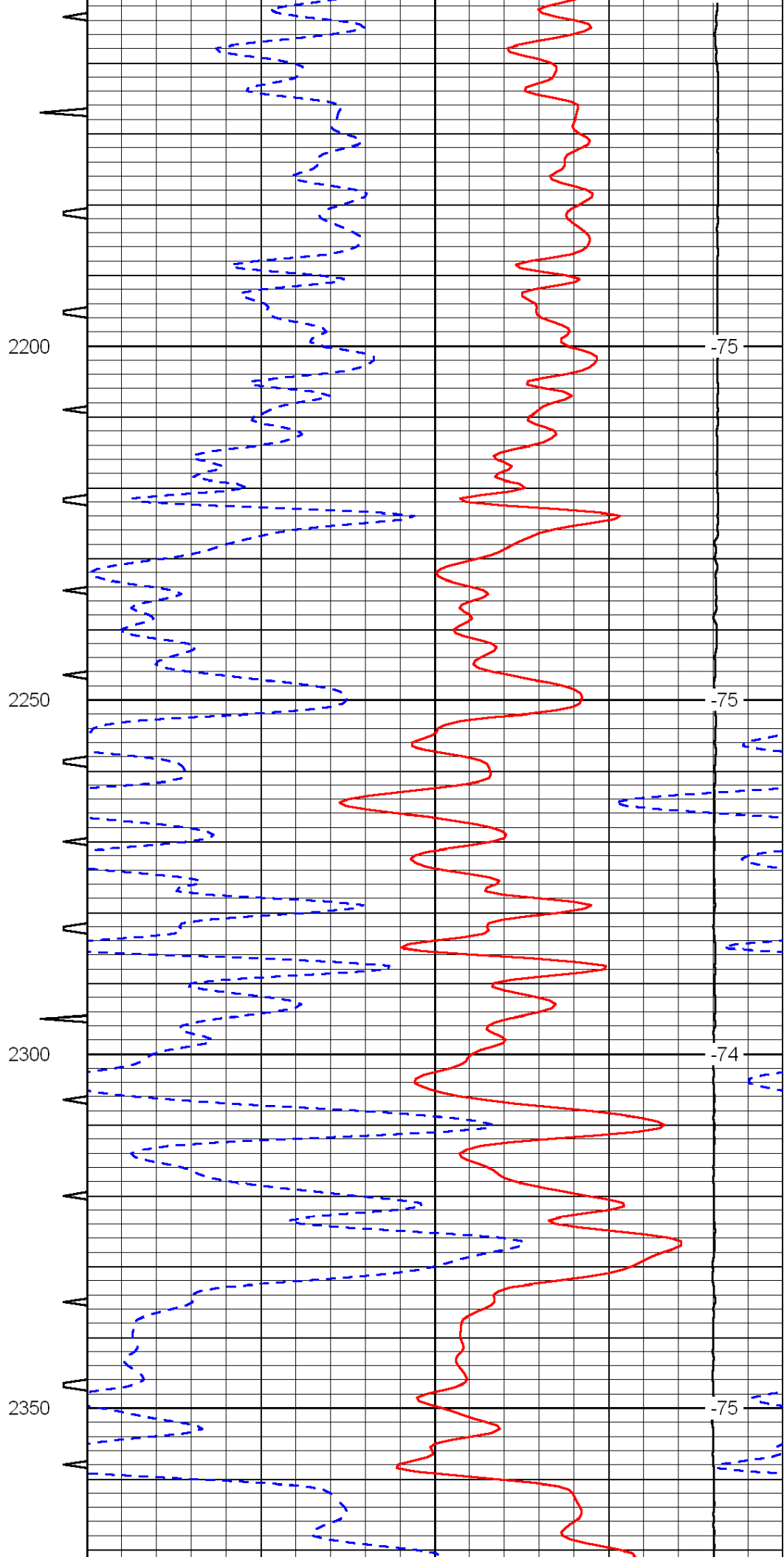
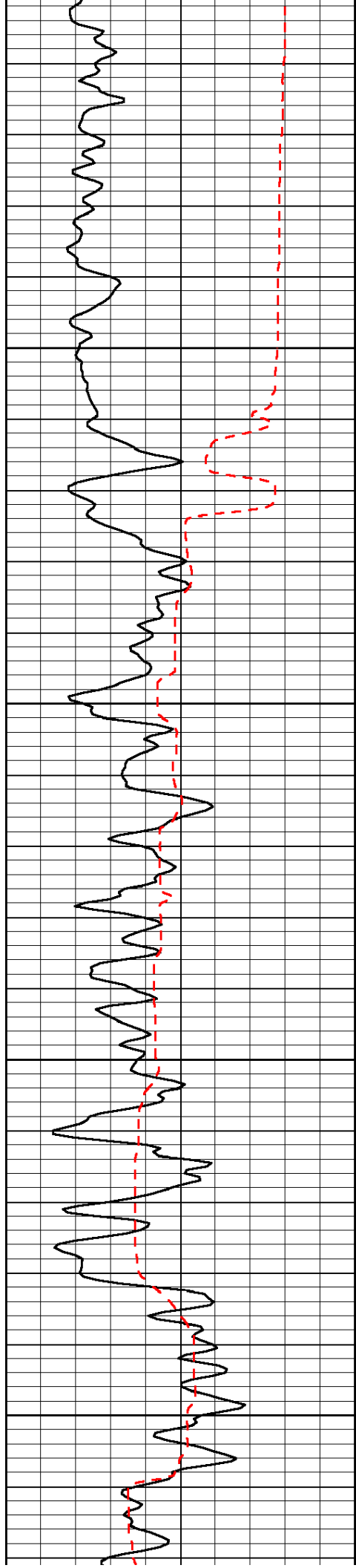


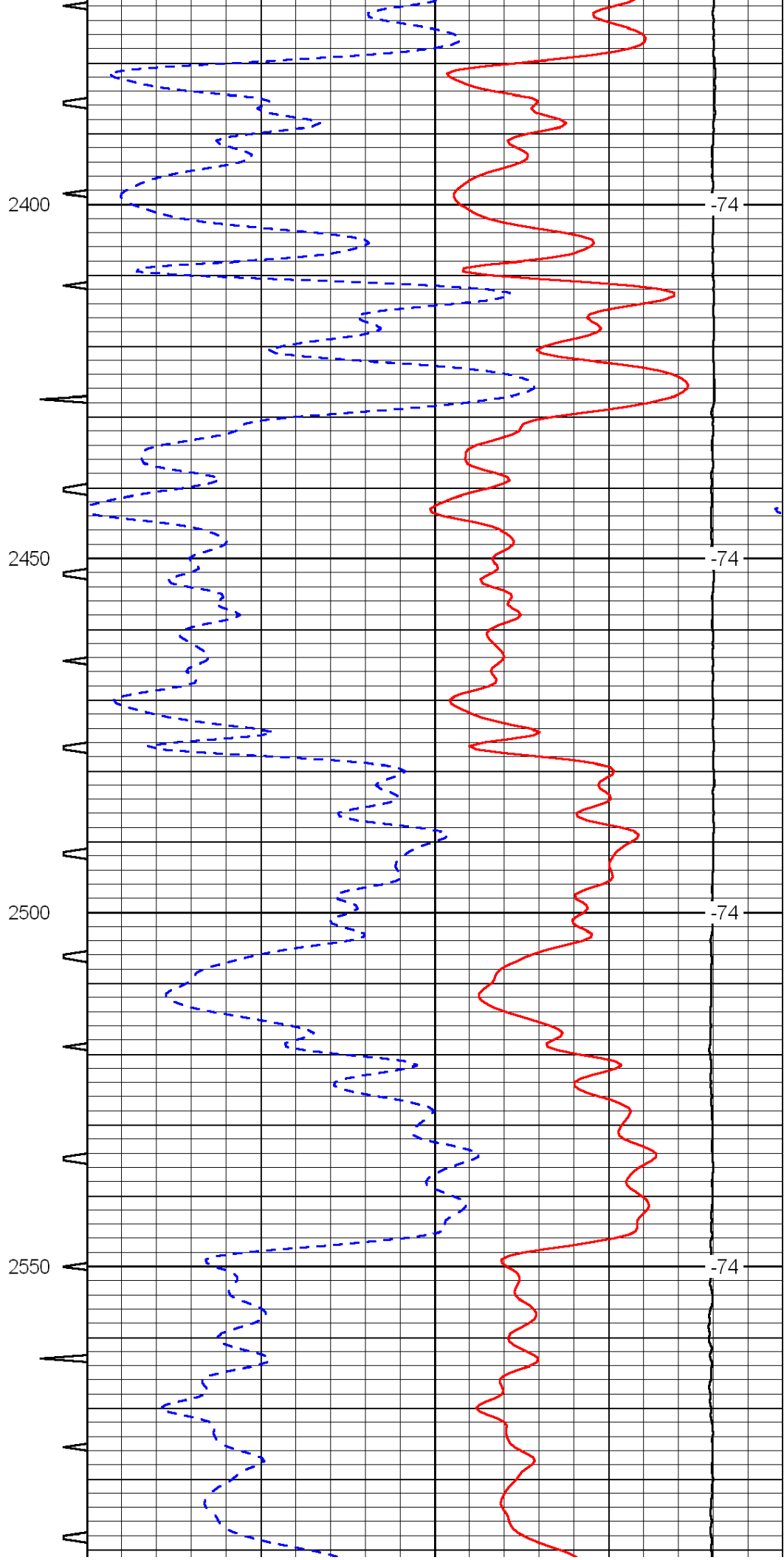
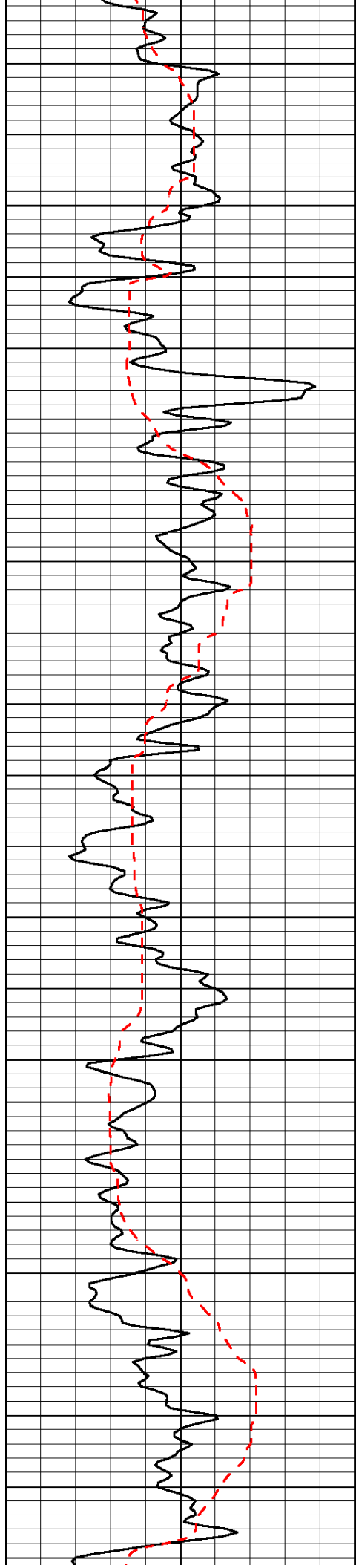


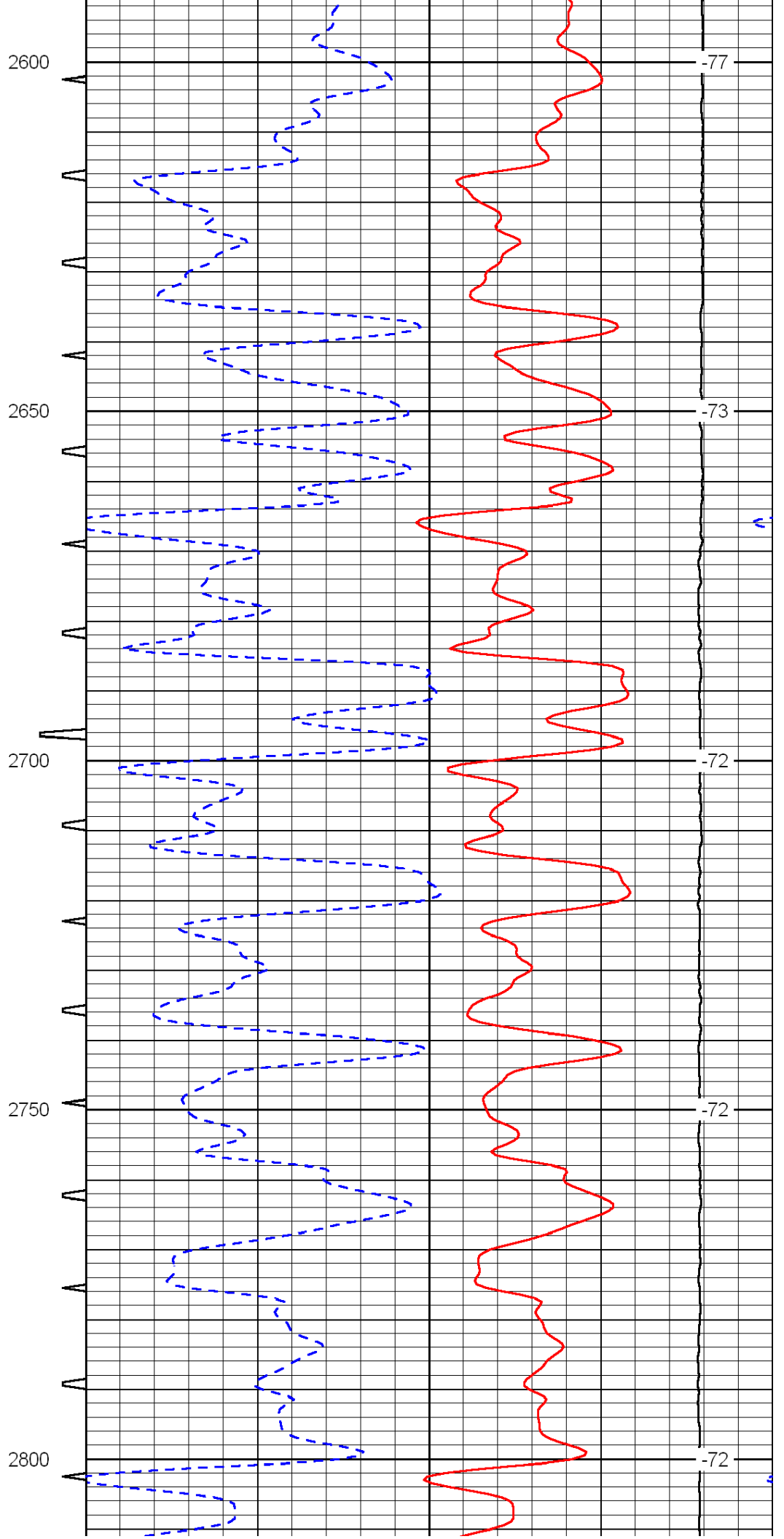
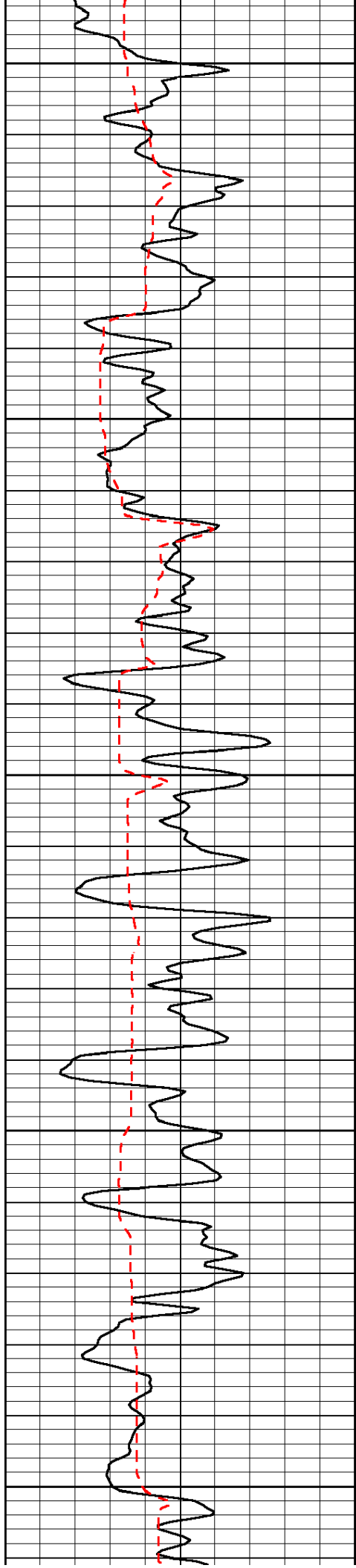


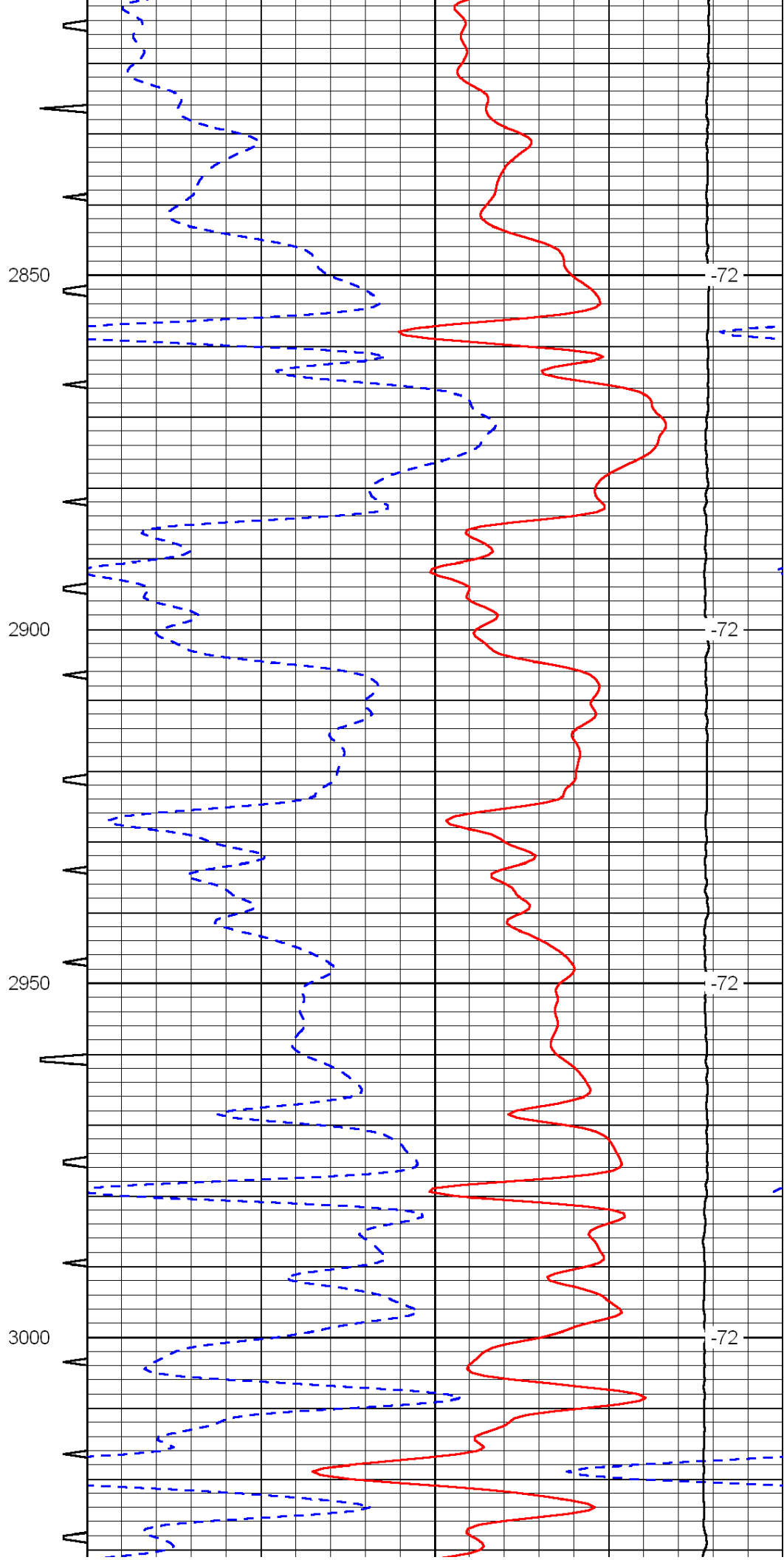
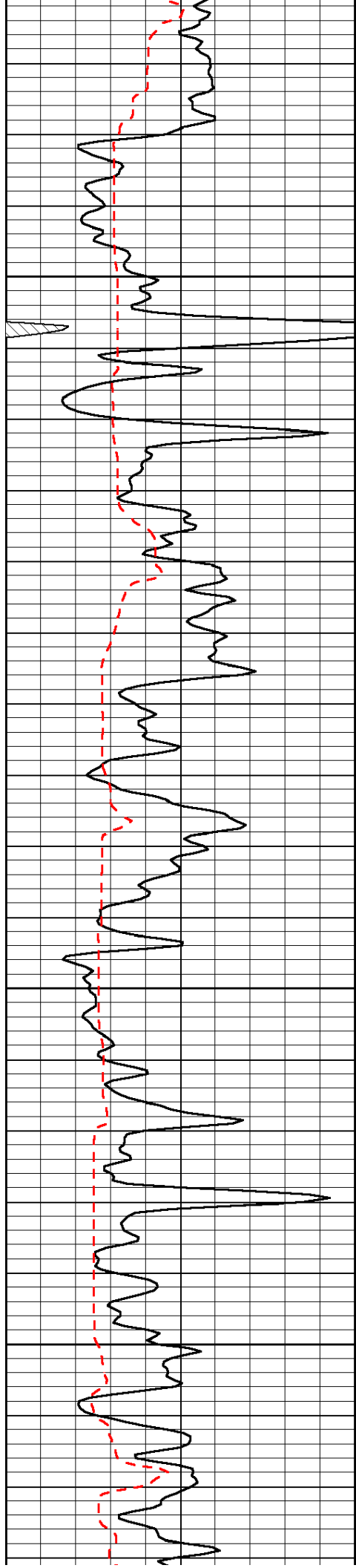


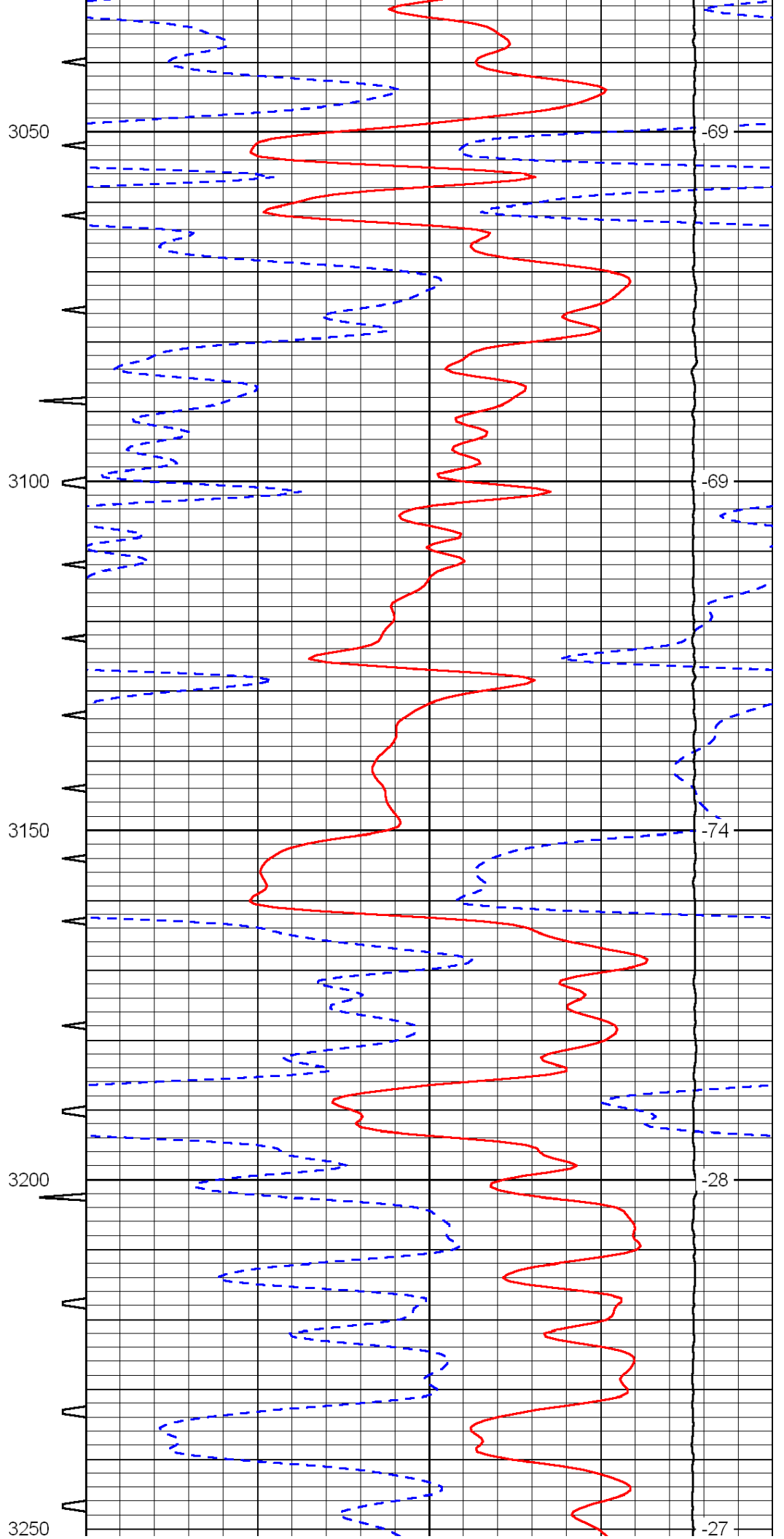
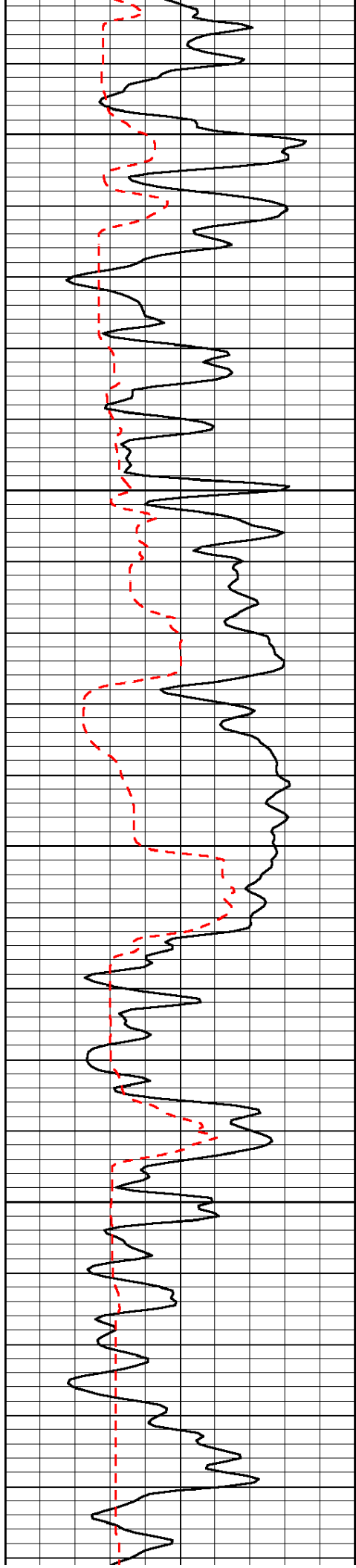


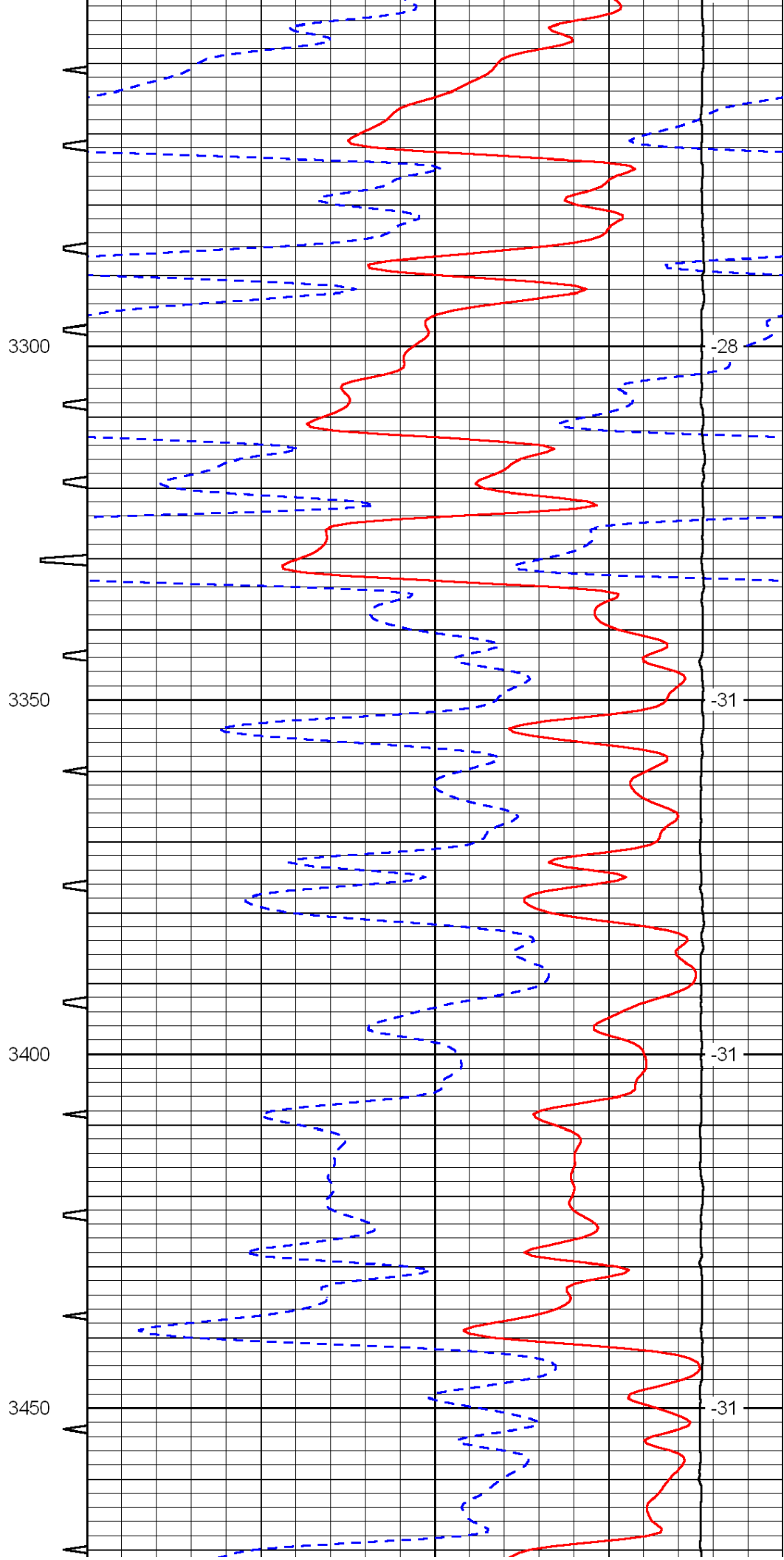
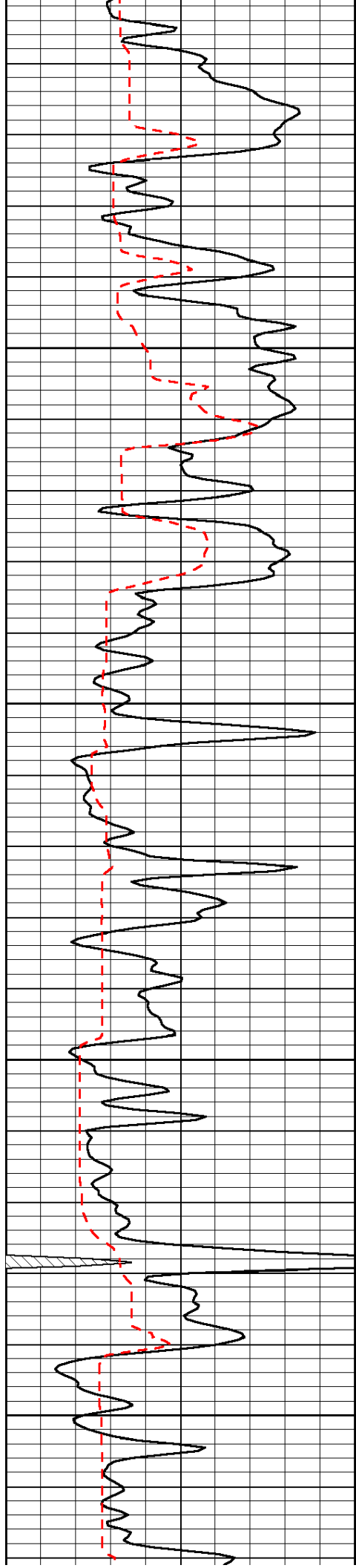


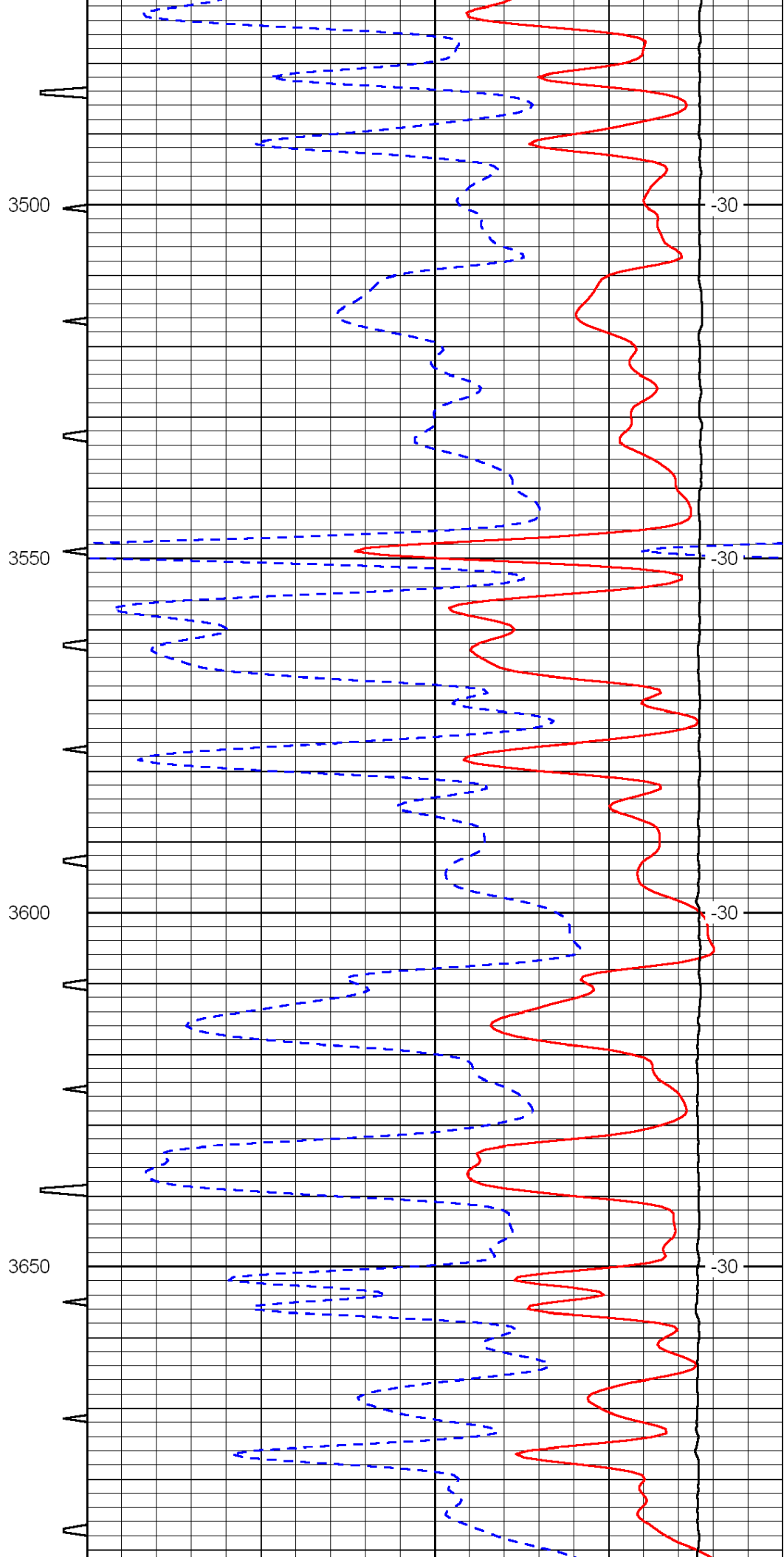
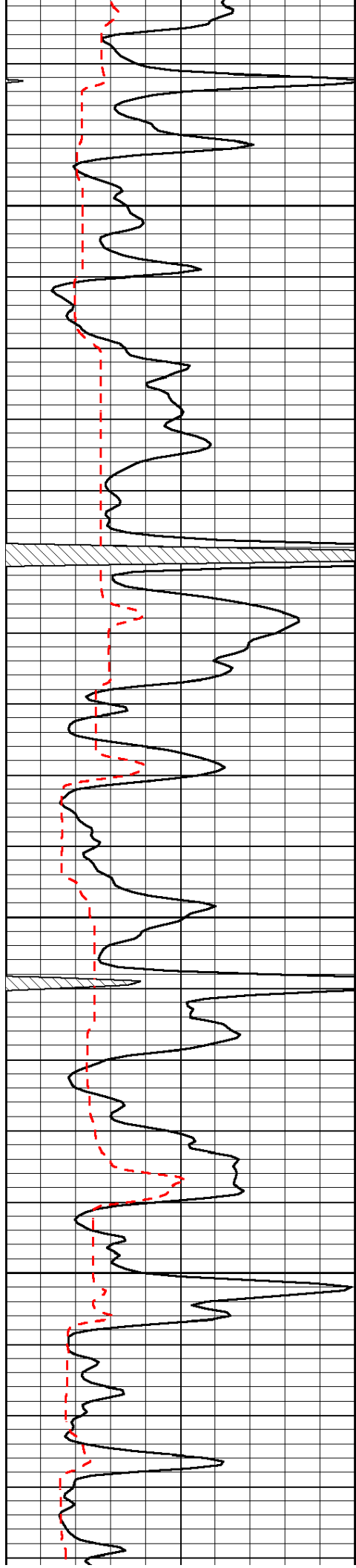


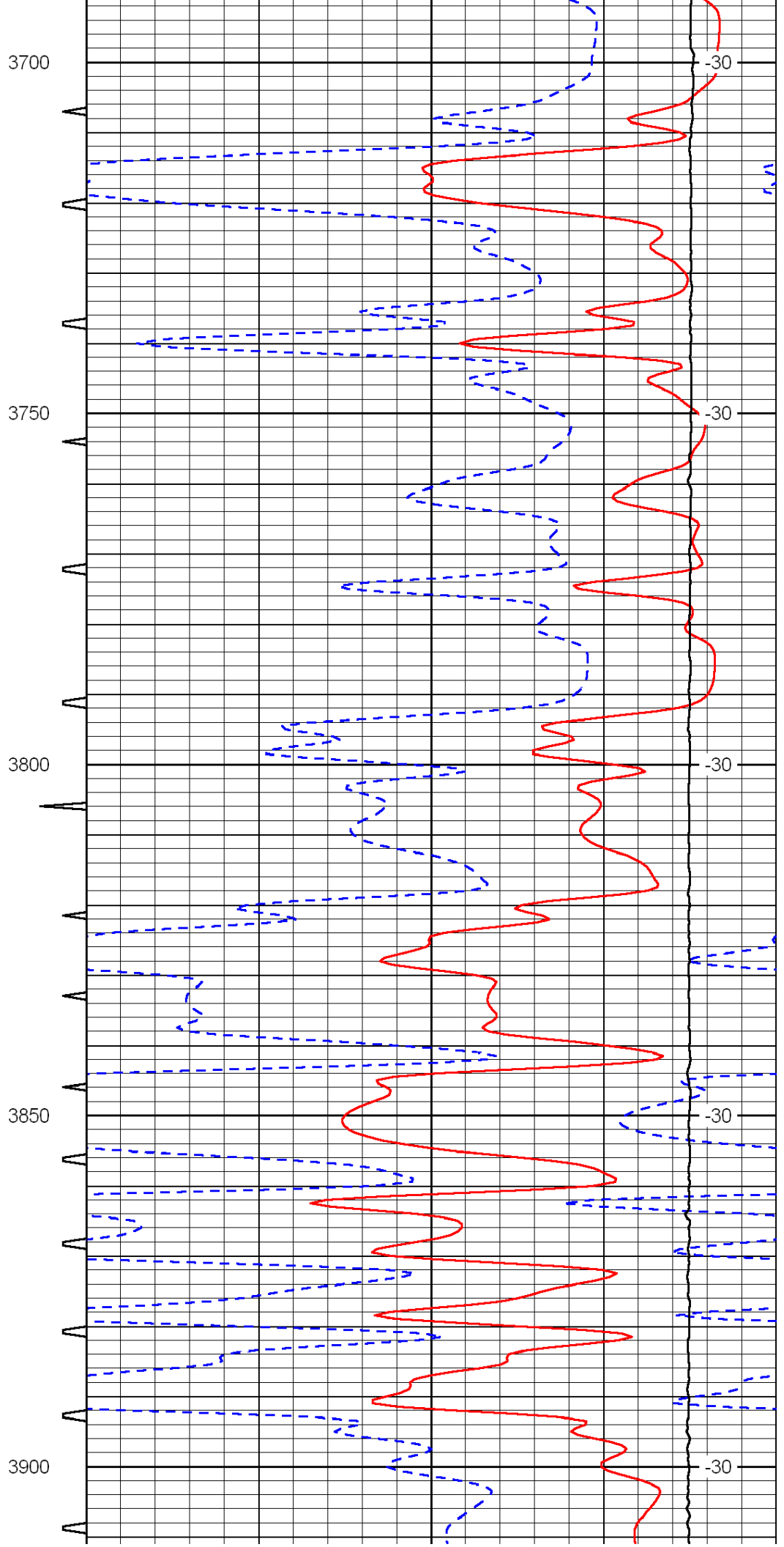
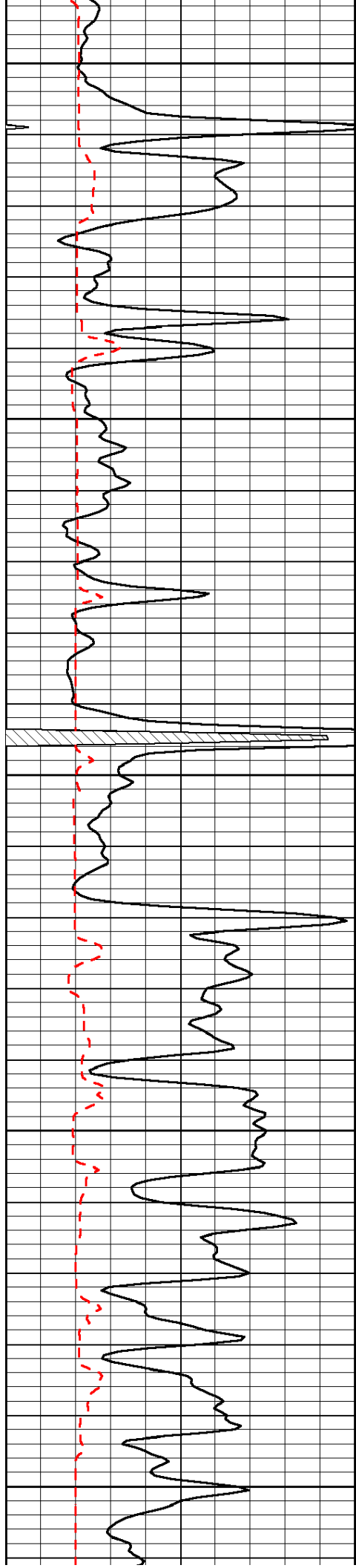


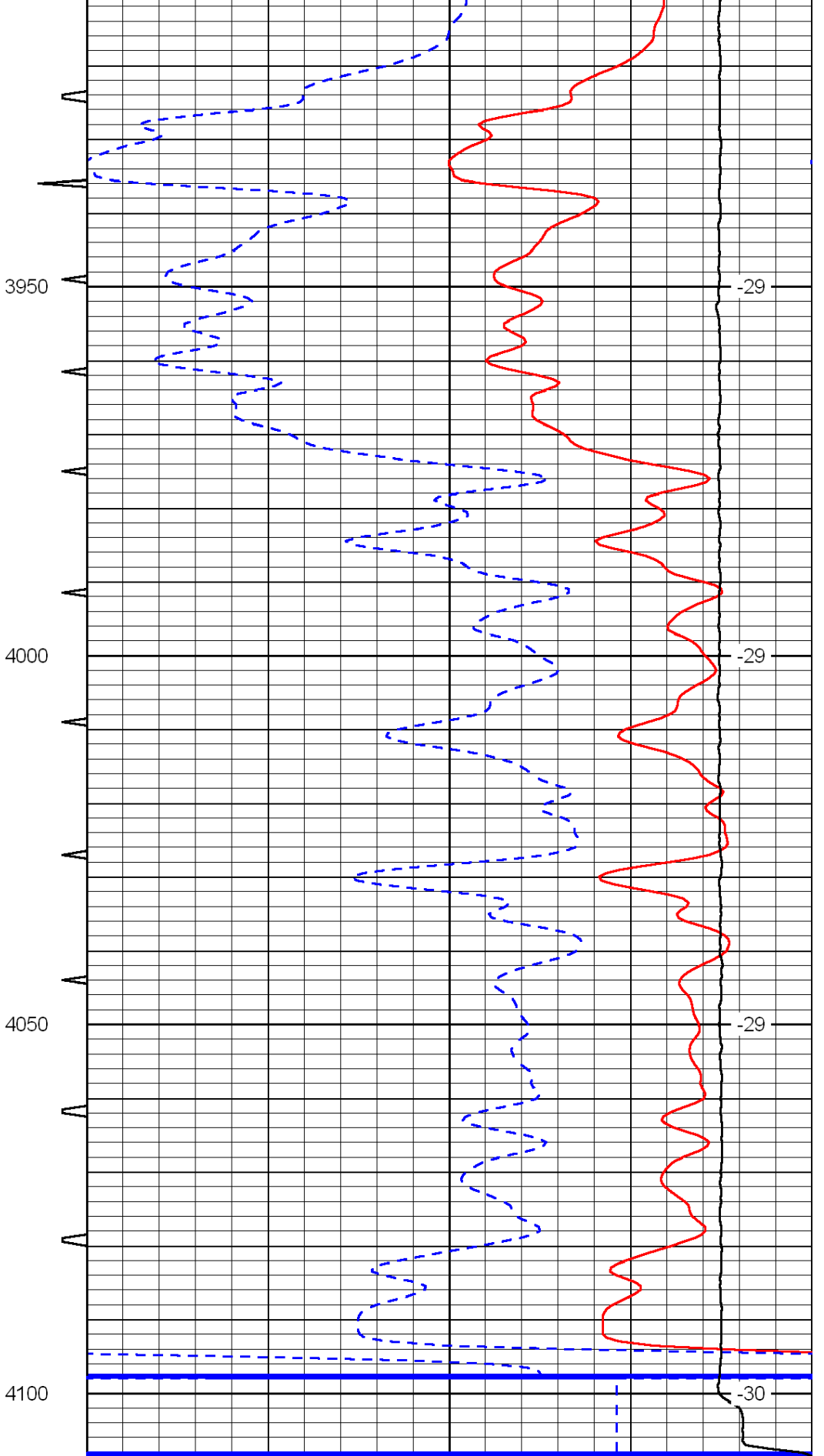
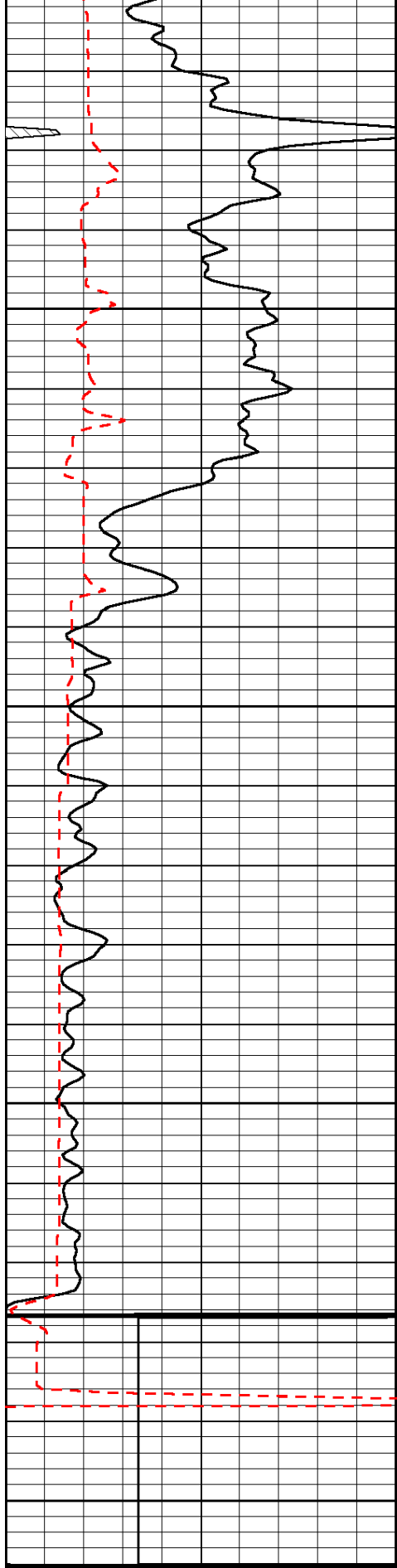












0	Gamma Ray	150	Sonic Int	140	Delta Time (usec/ft)	40
150	Gamma Ray	300	5	0	SPOR	-10
6	Caliper (GAPI)	16		15000	LTEN (lb)	0

LSPD