



Dual Compensated  
Porosity Log

DIGITAL LOG (785) 625-3858

API No. 15-195-22,677-00-00

Company: Murfin Drilling Company, Inc.  
Well: Baugher No. 1-20  
Field: Adair Northwest  
County: Trego State: Kansas

Location: 500' FNL & 2030' FEL

Other Services: DIL, MEL/BHCS

Permanent Datum: Ground Level, Elevation 2289  
Log Measured From: Kelly Bushing, 5 Ft. Above Perm. Datum  
Drilling Measured From: Kelly Bushing

Sec: 20 Twp: 12 S Rge: 21 W

Elevation: K.B. 2294, D.F. 2289, G.L. 2289

Date: 8/28/2010

Run Number: One

Type Log: CNL / CDL

Depth Driller: 4100

Depth Logger: 4100

Bottom Logged Interval: 4079

Top Logged Interval: 3200

Type Fluid In Hole: Chemical

Salinity, PPM CL: 5,100

Density: 9.1

Level: Full

Max. Rec. Temp. F: 119

Operating Rig Time: 5 1/2 Hours

Equipment -- Location: 4 Hays

Recorded By: K. Bange

Witnessed By: Paul Gunzelman

Run No.	Bit	Borehole Record		Casing Record		To
		From	To	From	To	
1	12.25	00	219	8.625	24#	219
2	7.875	219	4100			

<<< Fold Here >>>

All interpretations are opinions based on inferences from electrical or other measurements and we cannot and do not guarantee the accuracy or correctness of any interpretation, and we shall not, except in the case of gross or willful negligence on our part, be liable or responsible for any loss, costs, damages, or expenses incurred or sustained by anyone resulting from any interpretation made by any of our officers, agents or employees. These interpretations are also subject to our general terms and conditions set out in our current Price Schedule.

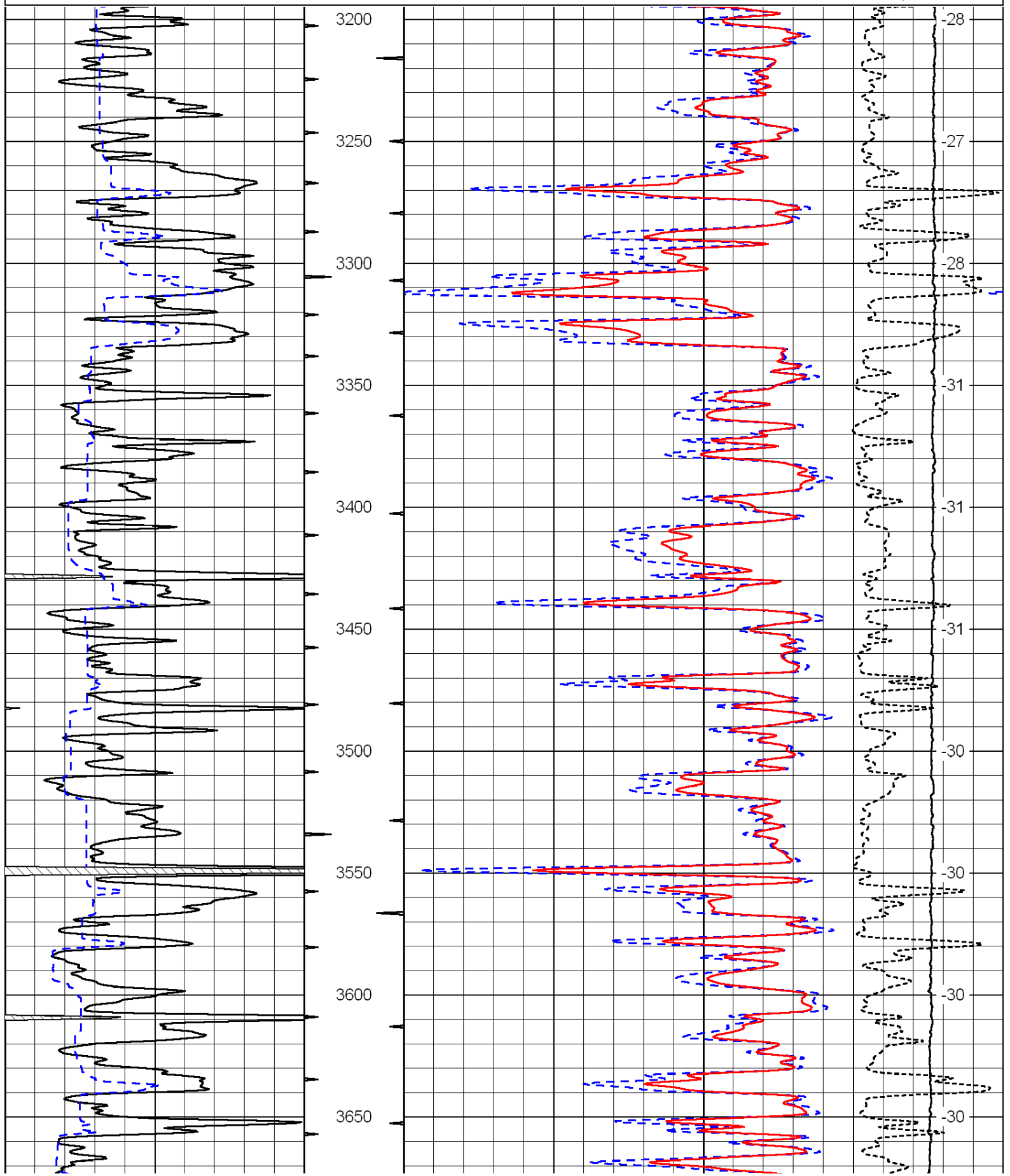
Comments

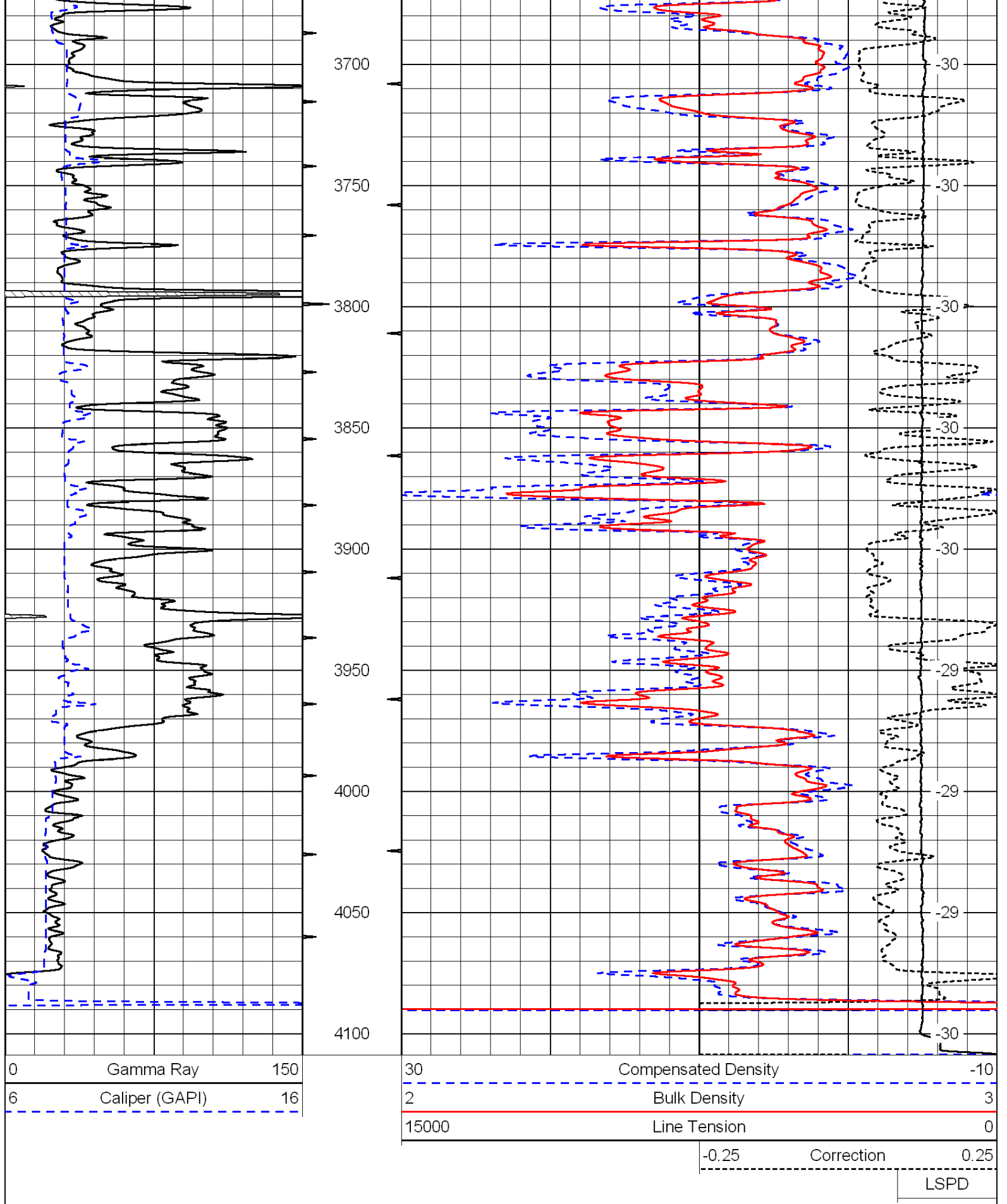
Thank you for using Log-Tech, Inc.  
(785) 625-3858

I-70 and Riga rd, 2 1/2 N to J rd, 1 1/2 W, S into

0	Gamma Ray	150
6	Caliper (GAPI)	16

30	Compensated Density	-10
2	Bulk Density	3
15000	Line Tension	0
-0.25	Correction	0.25
LSPD		





Database File: c:\warrior\data\murfin\_baughner no. 1-20\murfn082810hd.db  
 Dataset Pathname: dil/murfin2in  
 Presentation Format: cndlspec  
 Dataset Creation: Sat Aug 28 10:59:15 2010

0	Gamma Ray	150
6	Caliper (GAPI)	16

30	Compensated Neutron (Limestone)	-10
30	Compensated Density (2.71 ma)	-10
15000	Line Tension	0
-0.25	Correction	0.25
LSPD		

