



Microresistivity Log

DIGITAL LOG (785) 625-3858

API No. 15-025-21,512-00-00	Company Falcon Exploration, Inc.	Well Fulton No. 3-11 (NW)	Field Liberty River
	County Clark	State Kansas	
	Location N2 SE NE NW 930' FNL & 2,310' FWL		Other Services CNL/CDL DIL/BHCS
	Sec: 11	Twp: 31S	Rge: 22W

Permanent Datum Ground Level	Kelly Bushing	Elevation 2151
Log Measured From	10 Ft. Above Perm. Datum	
Drilling Measured From	Kelly Bushing	
Date	8/25/2010	
Run Number	Two	
Depth Driller	5862	
Depth Logger	5865	
Bottom Logged Interval	5864	
Top Log Interval	4000	
Casing Driller	8.625 @ 699	
Casing Logger	699	
Bit Size	7.875	
Type Fluid in Hole	Chemical	
Salinity, ppm CL	9100	
Density / Viscosity	9.0 55	
pH / Fluid Loss	9.5 8.4	
Source of Sample	Flowline	
Rm @ Meas. Temp	.36 @ 84	
Rmf @ Meas. Temp	.27 @ 84	
Rmc @ Meas. Temp	.49 @ 84	
Source of Rmf / Rmc	Charts	
Rm @ BHT	.22 @ 135	
Operating Rig Time	6 Hours	
Max Rec. Temp. F	135	
Equipment Number	10	
Location	Hays	
Recorded By	J. Long	
Witnessed By	Keith Reavis	

<<< Fold Here >>>

All interpretations are opinions based on inferences from electrical or other measurements and we cannot and do not guarantee the accuracy or correctness of any interpretation, and we shall not, except in the case of gross or willful negligence on our part, be liable or responsible for any loss, costs, damages, or expenses incurred or sustained by anyone resulting from any interpretation made by any of our officers, agents or employees. These interpretations are also subject to our general terms and conditions set out in our current Price Schedule.

Comments

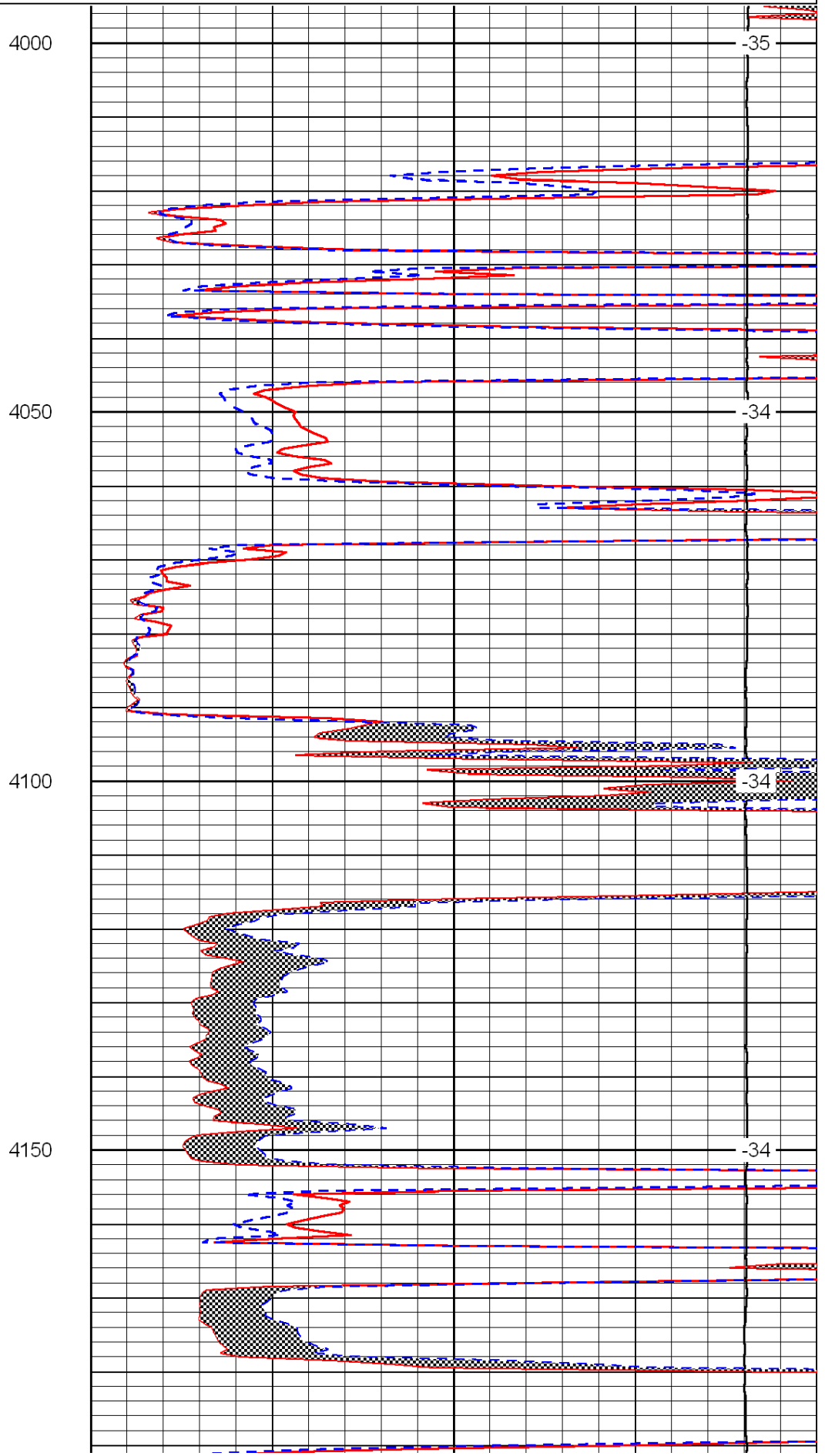
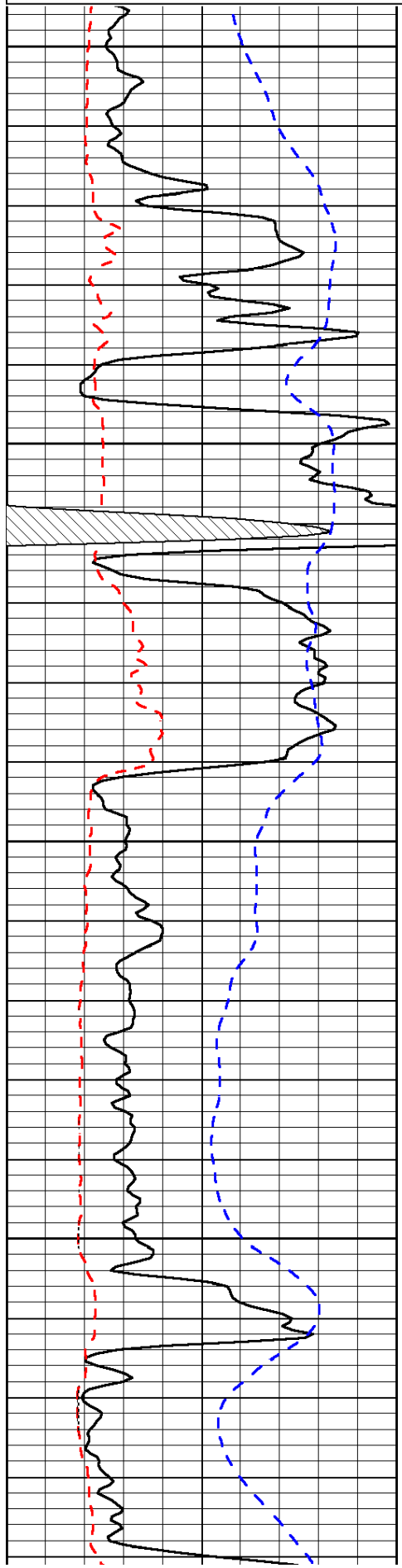
Thank you for using Log-Tech, Inc.
(785) 625-3858

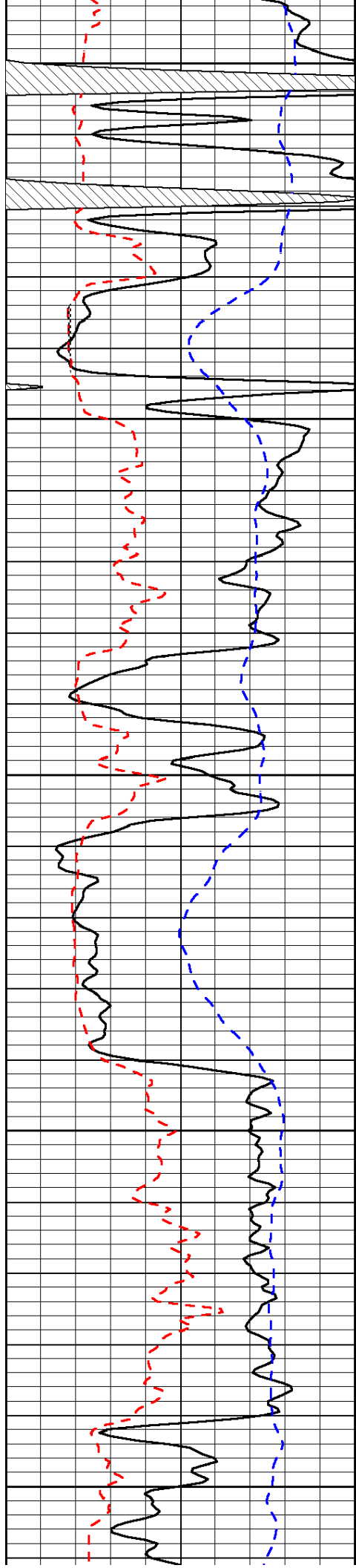
Bucklin, 2 West to 129 Rd, 12 1/2 South, East Into

0	Gamma Ray	150
6	Micro Log Caliper (GAPI)	16
-200	SP (mV)	0

0	Micro Inverse 1 X 1	40
0	Micro Normal 2"	40
15000	Line Weight	0

LSPD





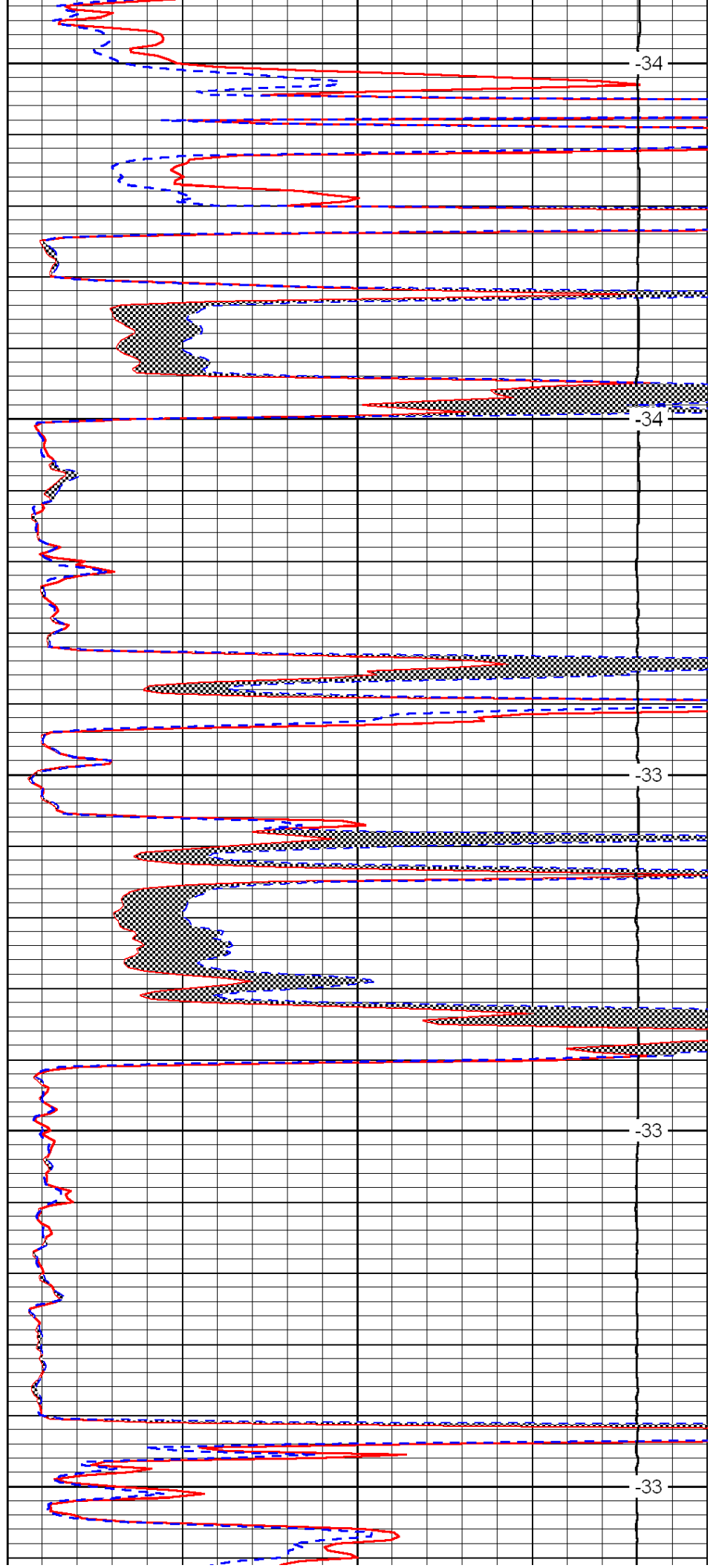
4200

4250

4300

4350

4400



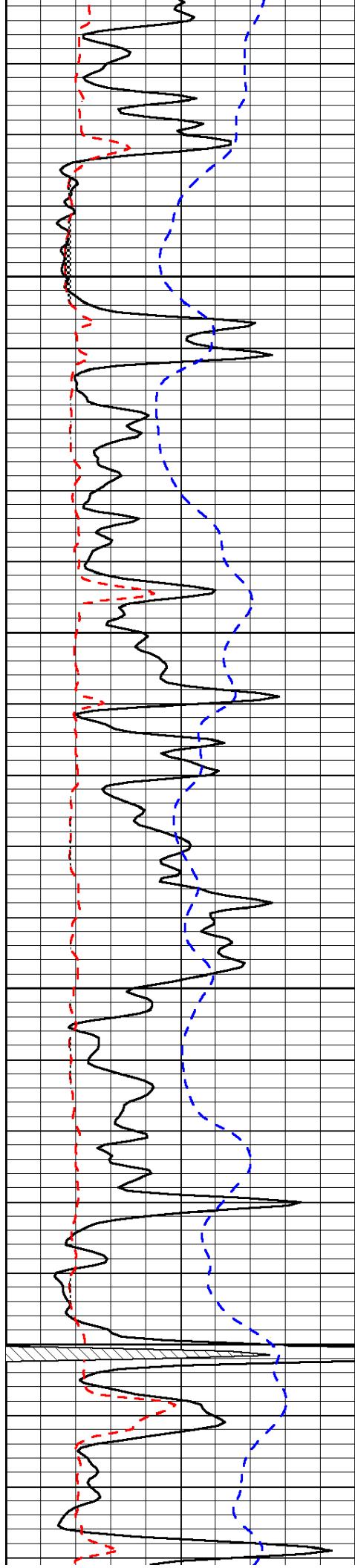
-34

-34

-33

-33

-33

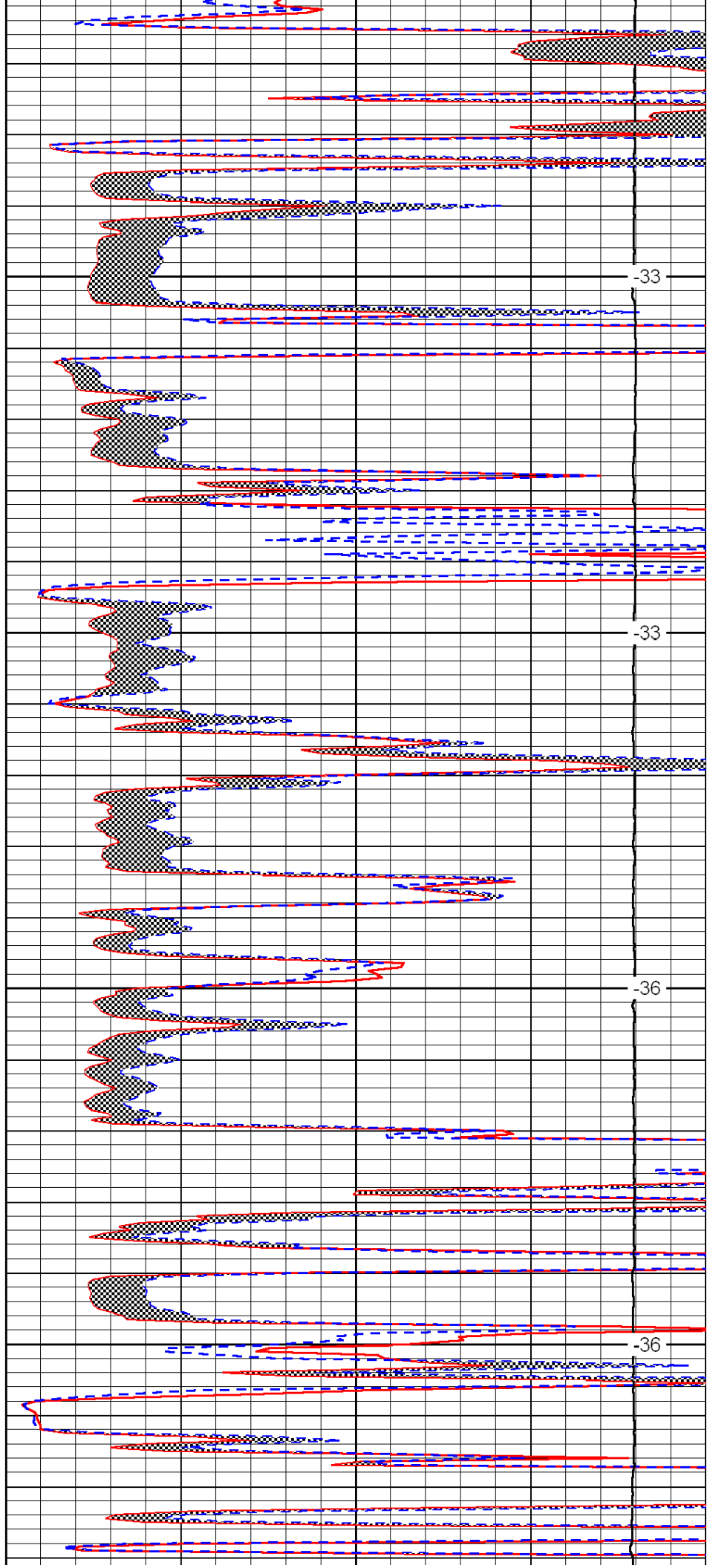


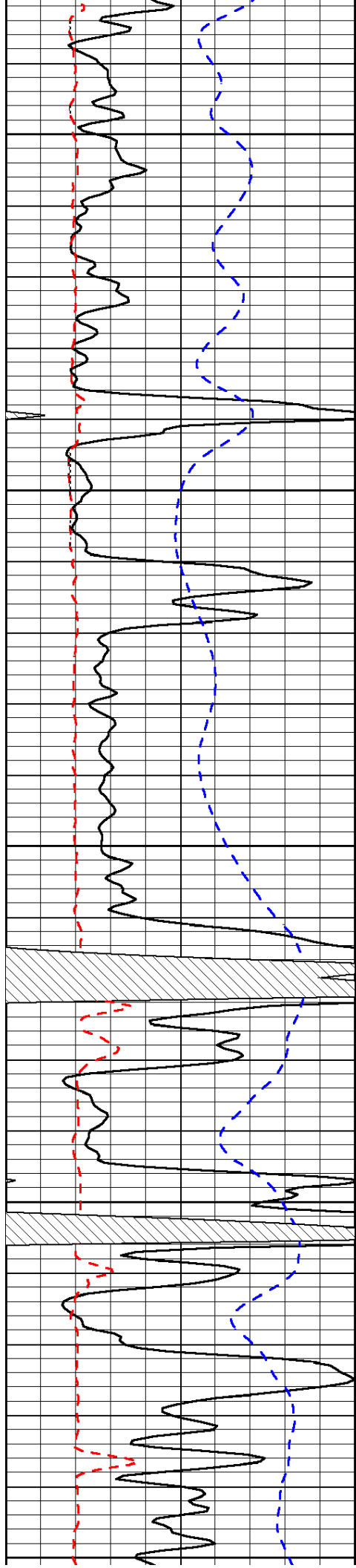
4450

4500

4550

4600





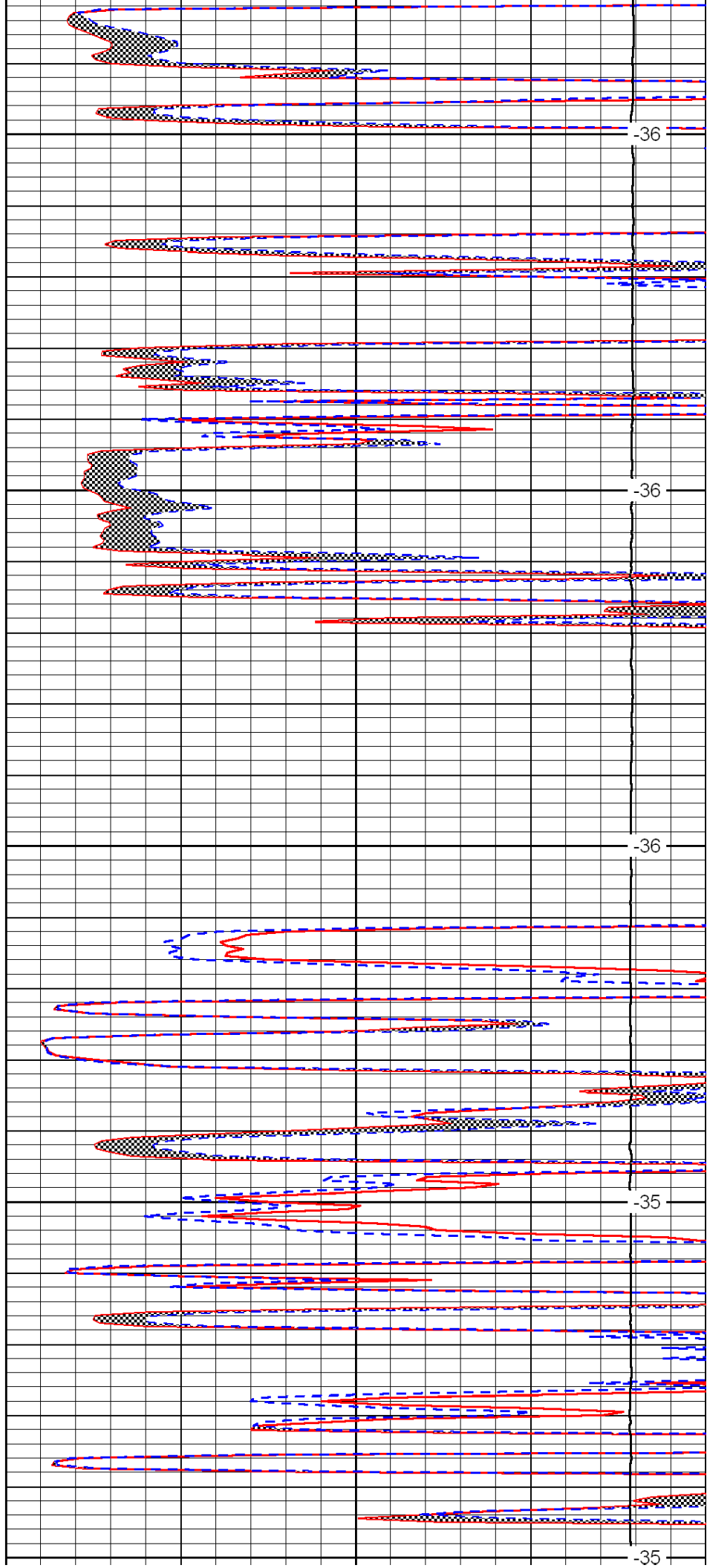
4650

4700

4750

4800

4850



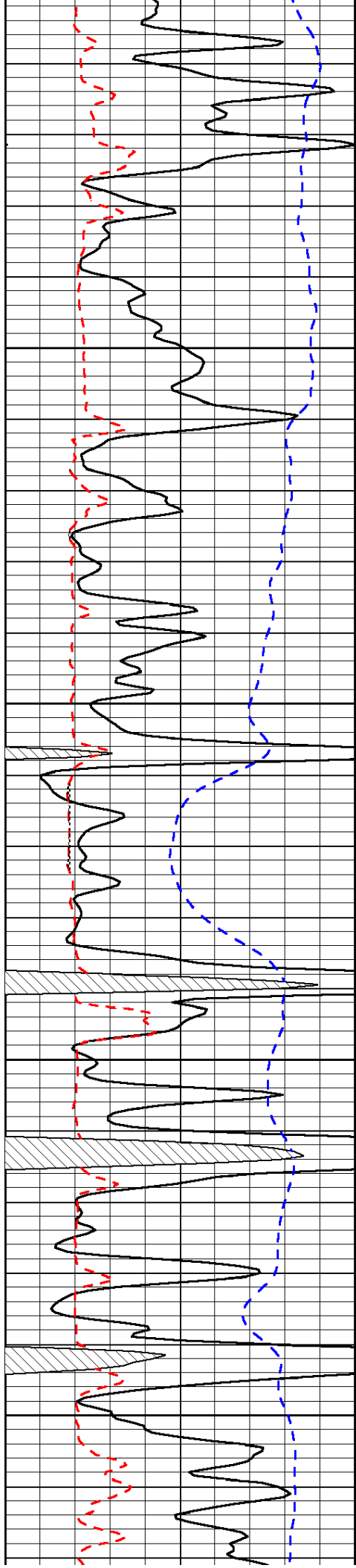
-36

-36

-36

-35

-35

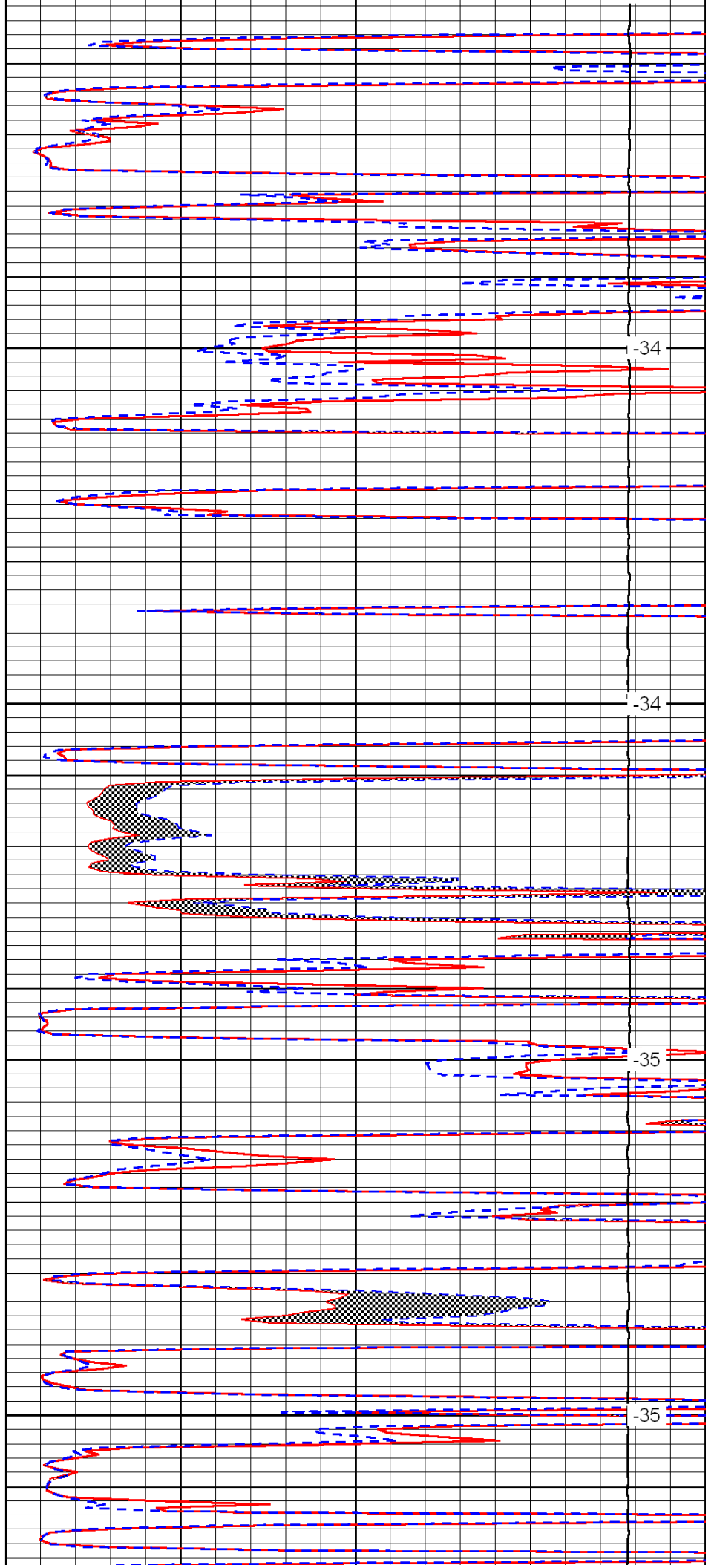


4900

4950

5000

5050

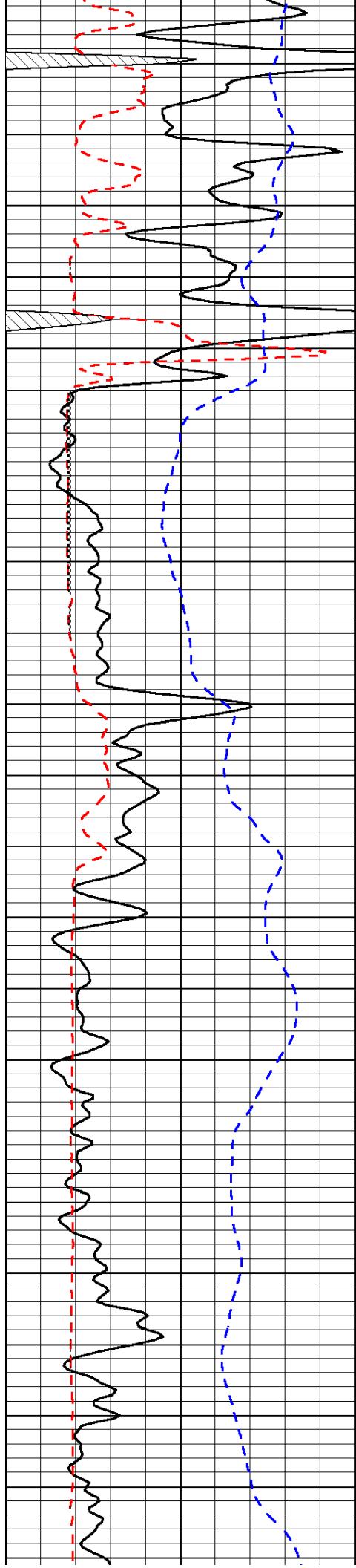


-34

-34

-35

-35

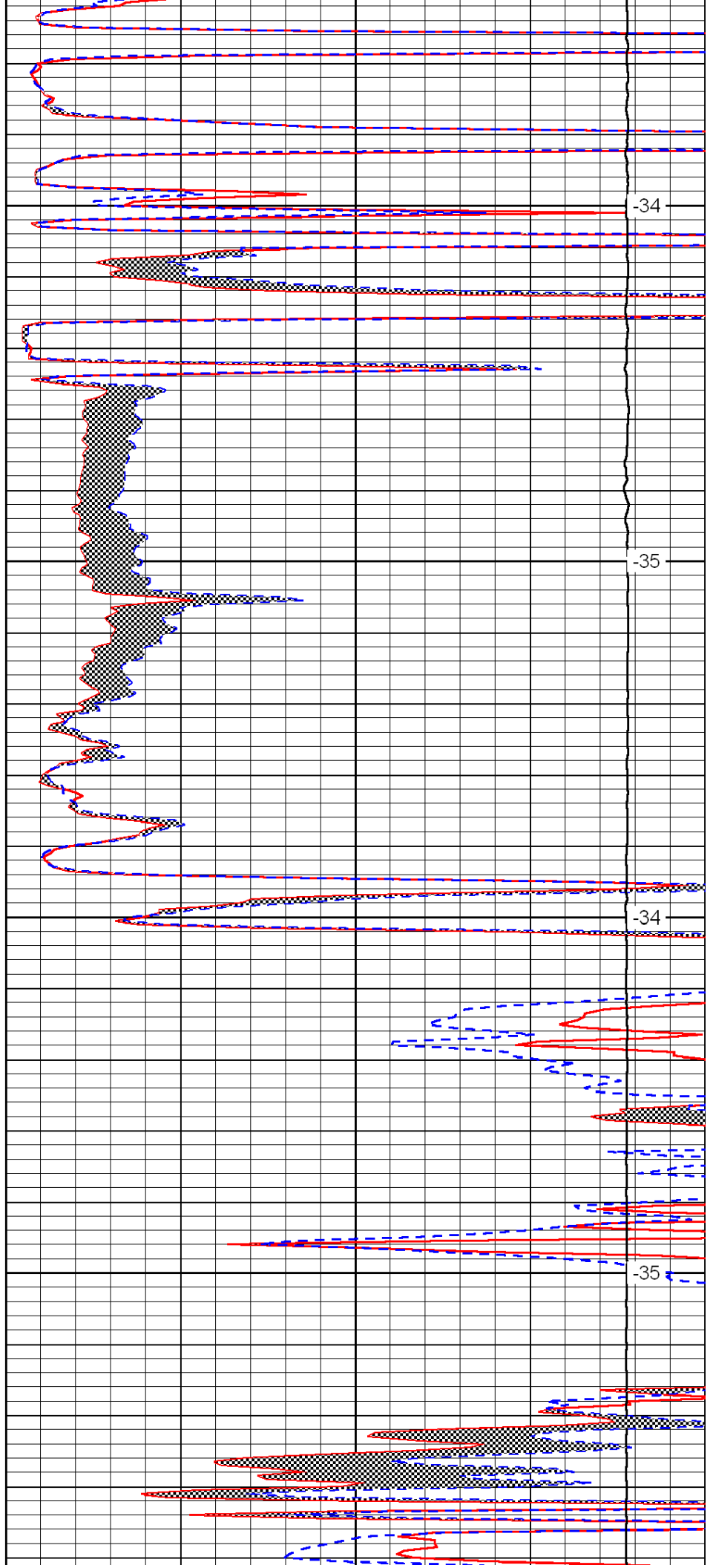


5100

5150

5200

5250

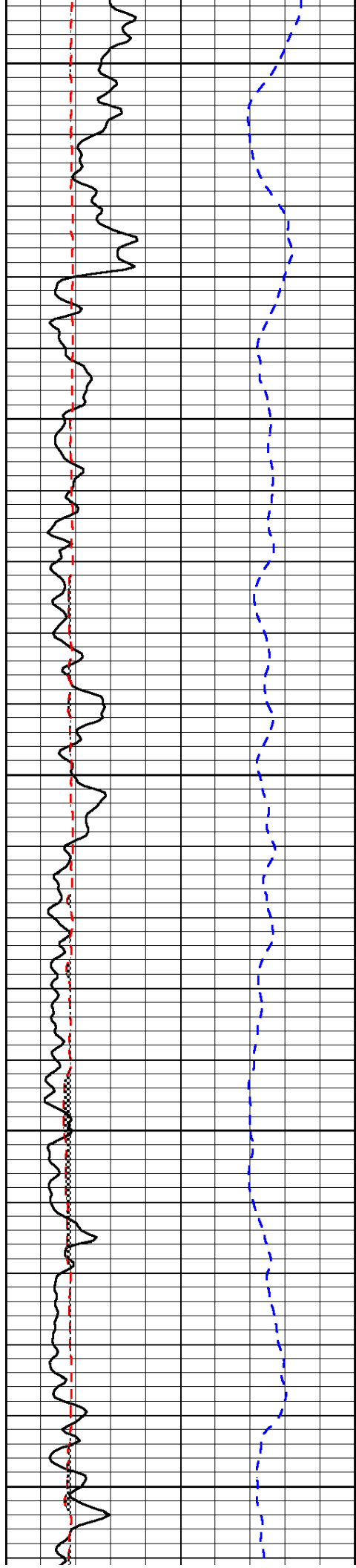


-34

-35

-34

-35



5300

-34

5350

-34

5400

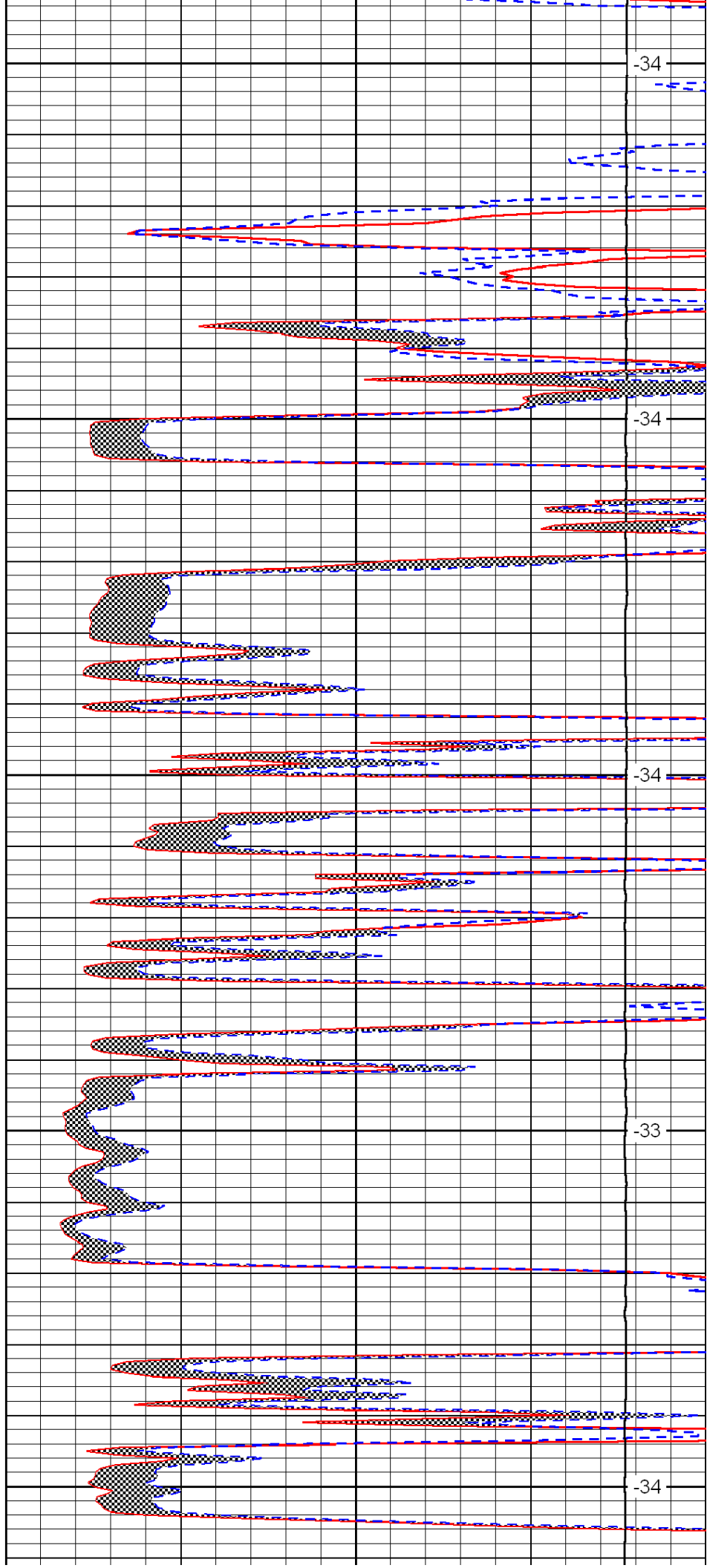
-34

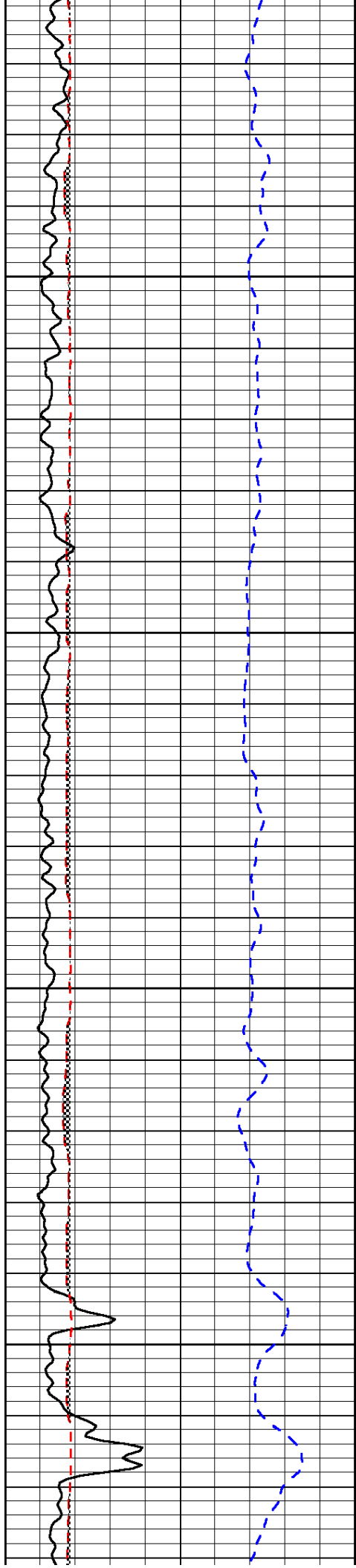
5450

-33

5500

-34



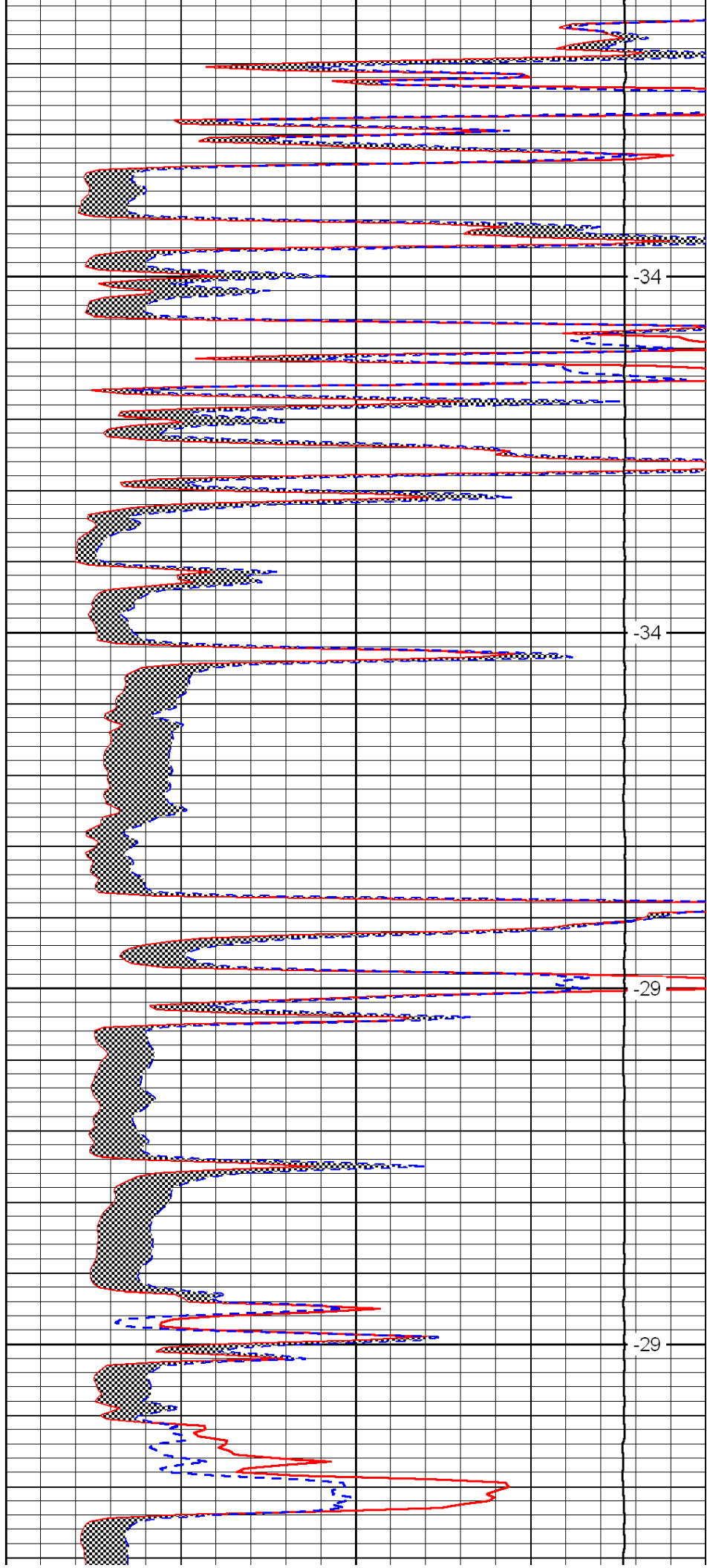


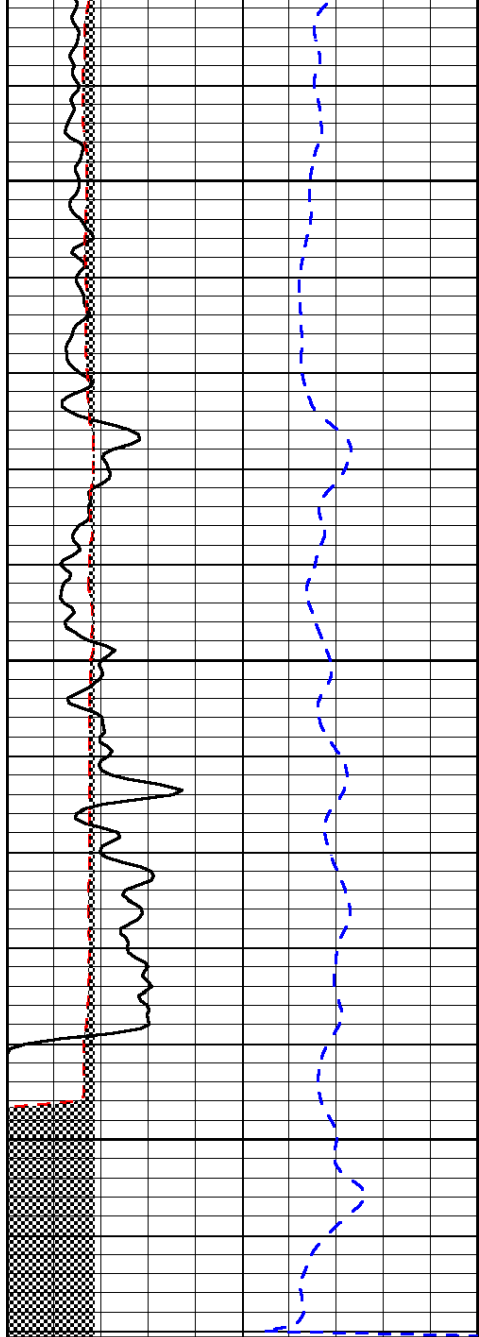
5550

5600

5650

5700





0	Gamma Ray	150
6	Micro Log Caliper (GAPI)	16
-200	SP (mV)	0

5750

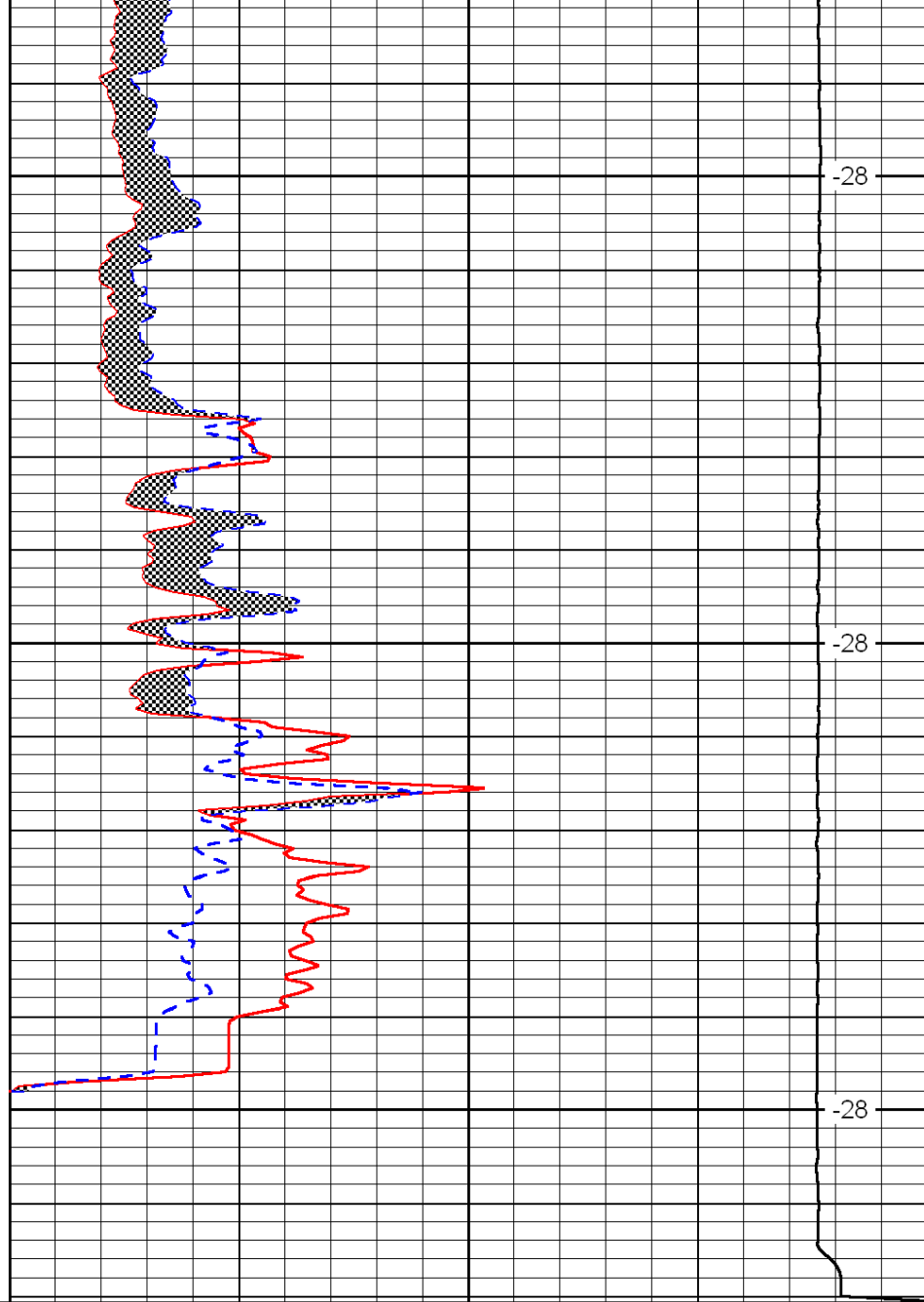
5800

5850

-28

-28

-28



0	Micro Inverse 1 X 1	40
0	Micro Normal 2''	40
15000	Line Weight	0

LSPD