



DIGITAL LOG (785) 625-3858

Dual Induction Log

API No.	15-025-21,512-00-00	
Company	Falcon Exploration, Inc.	
Well	Fulton No. 3-11 (NW)	
Field	Liberty River	
County	Clark	State Kansas
Location	N2 SE NE NW 930' FNL & 2,310' FWL	
Sec: 11	Twp: 31S	Rge: 22W
Permanent Datum	Ground Level	Elevation 2151
Log Measured From	Kelly Bushing	10 Ft. Above Perm. Datum
Drilling Measured From	Kelly Bushing	
		Other Services CNL/CDL MEL/BHCS
		Elevation K.B. 2161 D.F. 2151 G.L. 2151

Date	8/25/2010
Run Number	One
Depth Driller	5862
Depth Logger	5865
Bottom Logged Interval	5864
Top Log Interval	700
Casing Driller	8.625 @ 699
Casing Logger	699
Bit Size	7.875
Type Fluid in Hole	Chemical
Salinity, ppm CL	9100
Density / Viscosity	9.0 55
pH / Fluid Loss	9.5 8.4
Source of Sample	Flowline
Rm @ Meas. Temp	.36 @ 84
Rmf @ Meas. Temp	.27 @ 84
Rmc @ Meas. Temp	.49 @ 84
Source of Rmf / Rmc	Charts
Rm @ BHT	.22 @ 135
Operating Rig Time	6 Hours
Max Rec. Temp. F	135
Equipment Number	10
Location	Hays
Recorded By	J. Long
Witnessed By	Keith Reavis

<<< Fold Here >>>

All interpretations are opinions based on inferences from electrical or other measurements and we cannot and do not guarantee the accuracy or correctness of any interpretation, and we shall not, except in the case of gross or willful negligence on our part, be liable or responsible for any loss, costs, damages, or expenses incurred or sustained by anyone resulting from any interpretation made by any of our officers, agents or employees. These interpretations are also subject to our general terms and conditions set out in our current Price Schedule.

Comments

Thank you for using Log-Tech, Inc.
(785) 625-3858

Bucklin, 2 West to 129 Rd, 12 1/2 South, East Into

Database File: c:\warrior\data\falcon_fulton#3-11\falcon.db
 Dataset Pathname: dil/flcnstck
 Presentation Format: dil2in
 Dataset Creation: Wed Aug 25 15:11:31 2010
 Charted by: Depth in Feet scaled 1:600

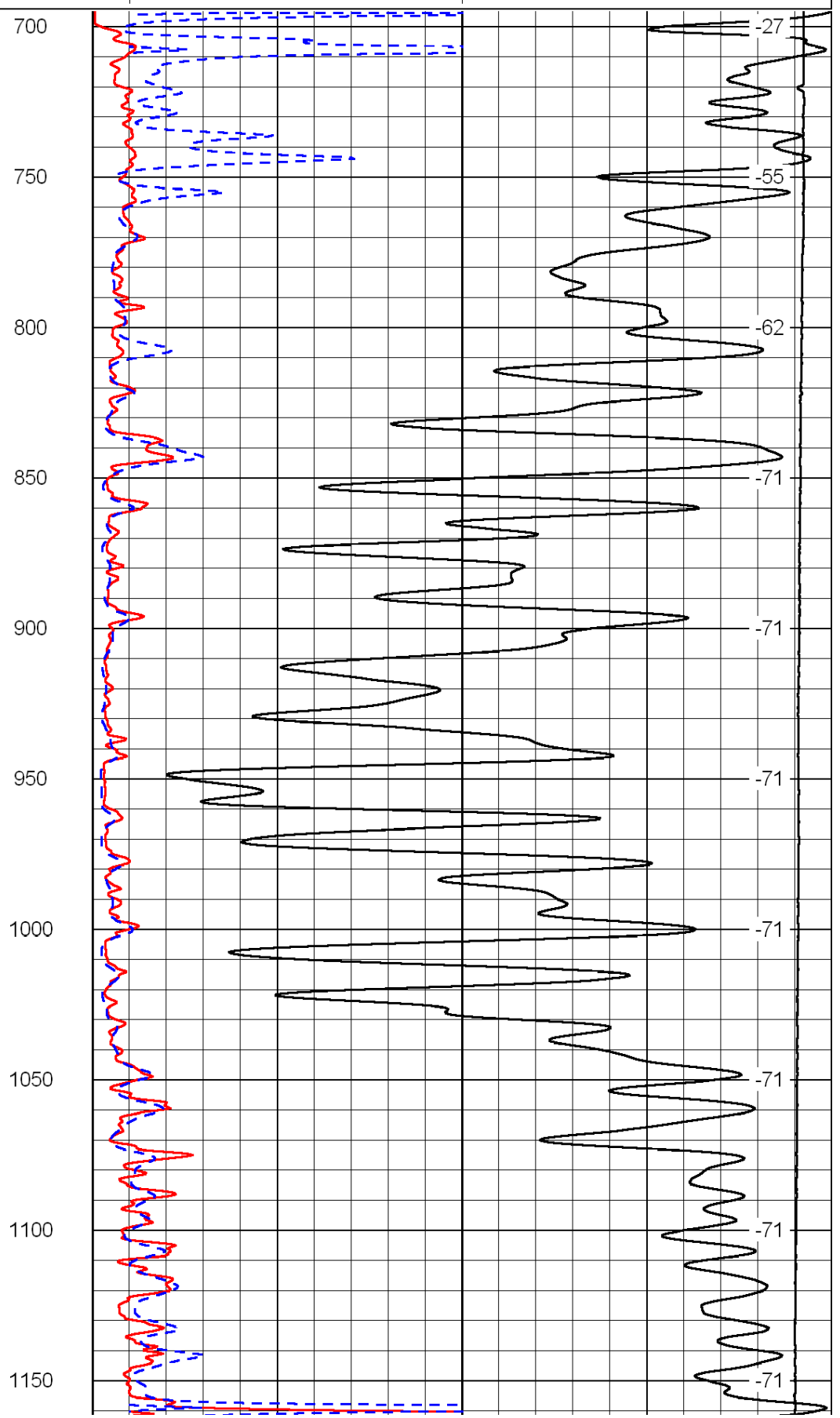
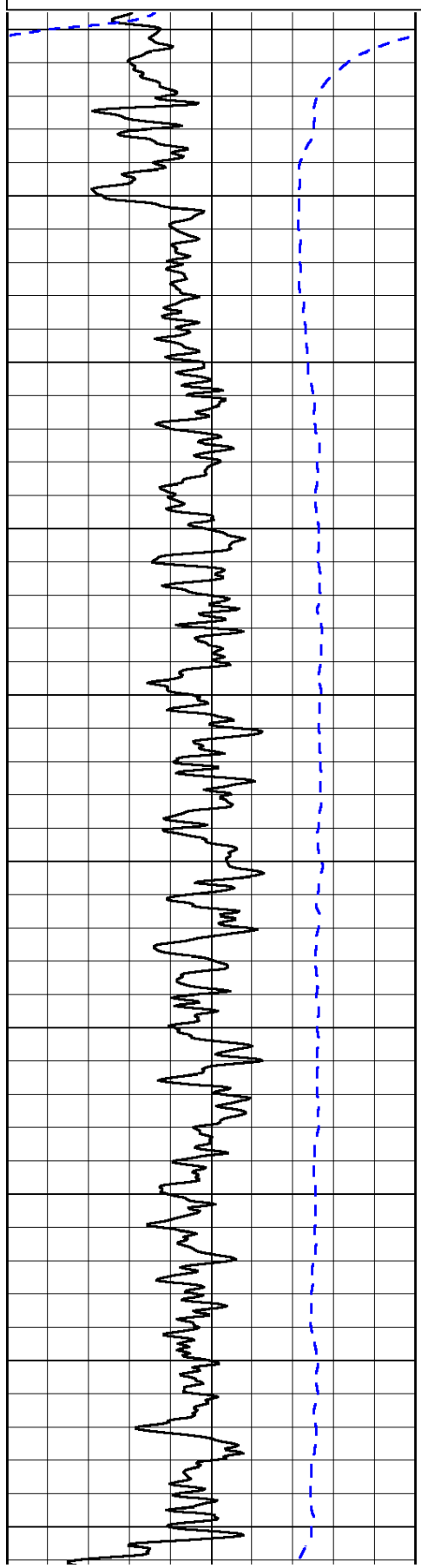
0	Gamma Ray	150
-200	SP (mV)	0

0	Shallow Resistivity	50
0	Deep Resistivity	50

LSPD

1000	Conductivity	0
15000	Line Tension	0

50	Shallow Resistivity	500
50	Deep Resistivity	500



-27

-55

-62

-71

-71

-71

-71

-71

-71

-71

700

750

800

850

900

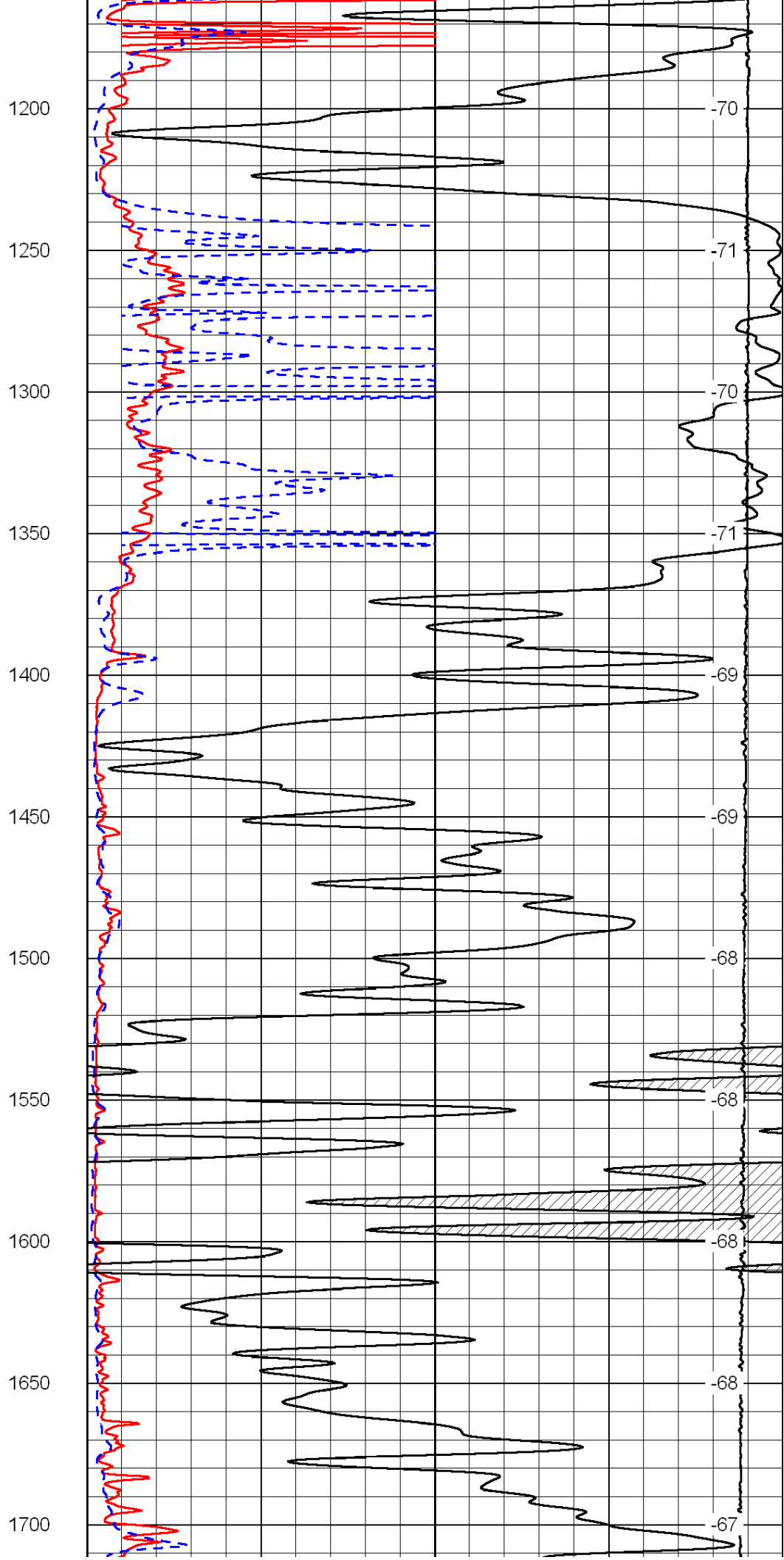
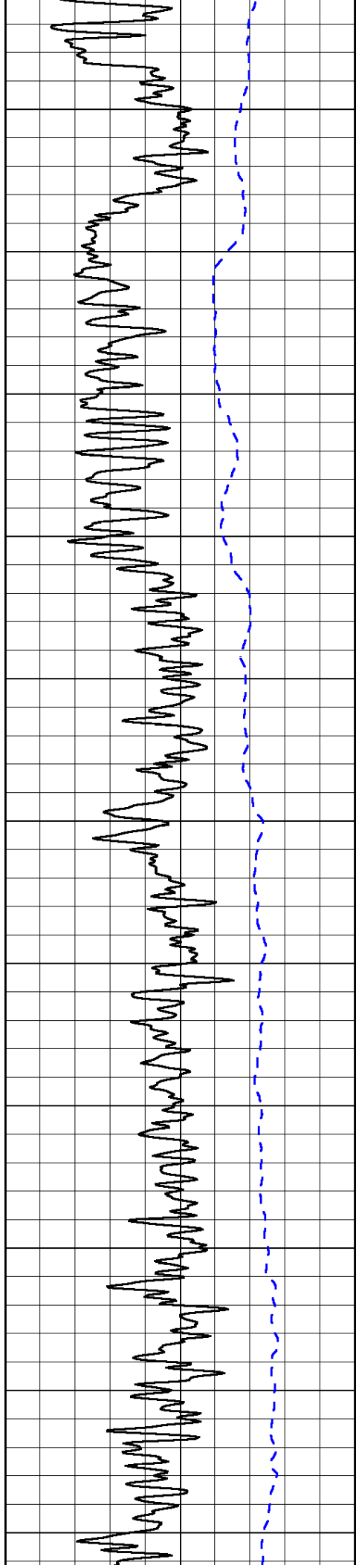
950

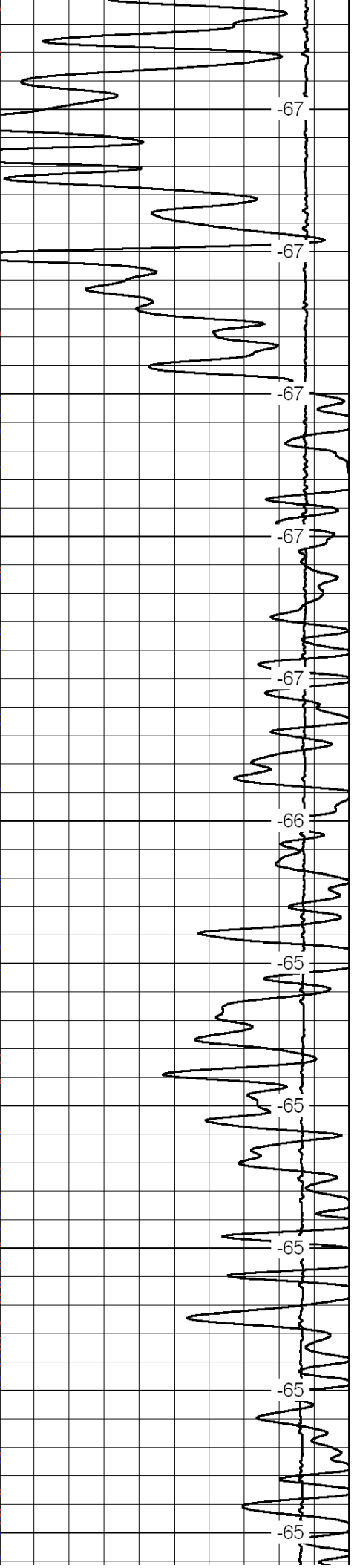
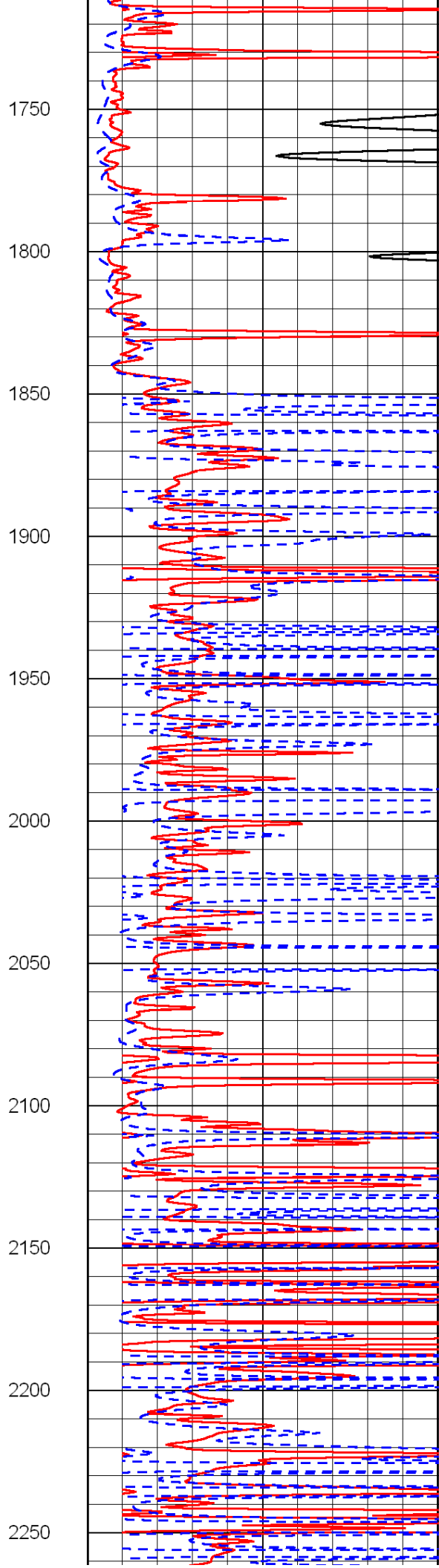
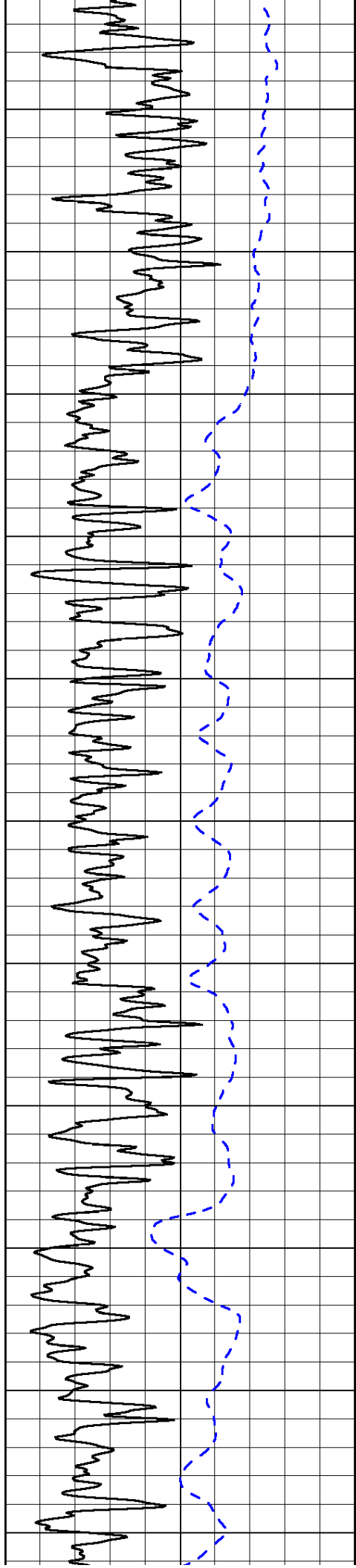
1000

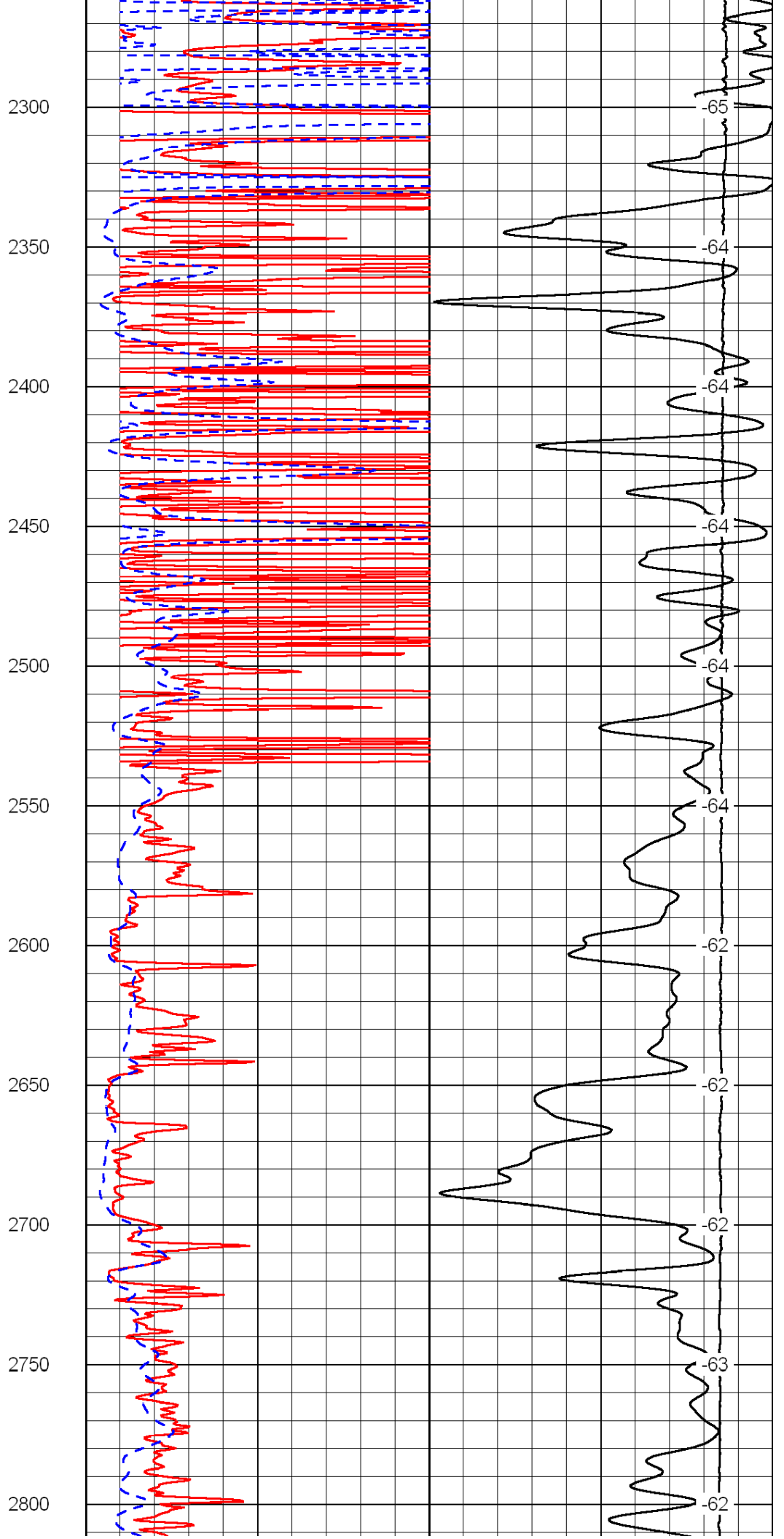
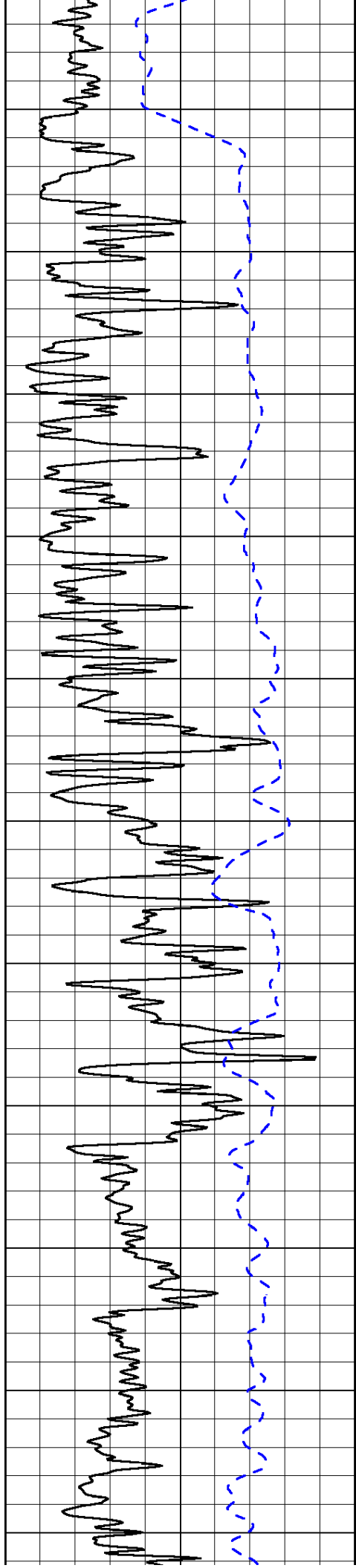
1050

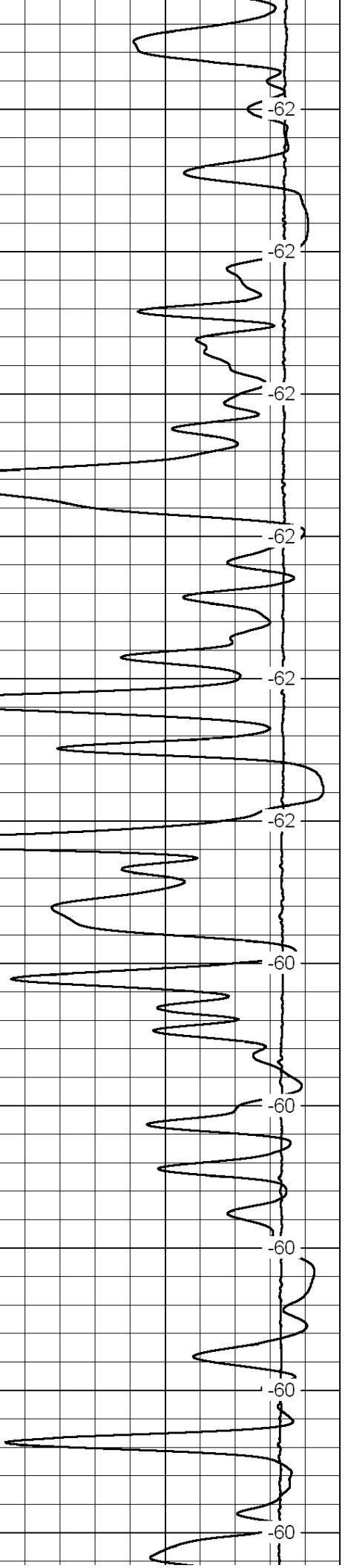
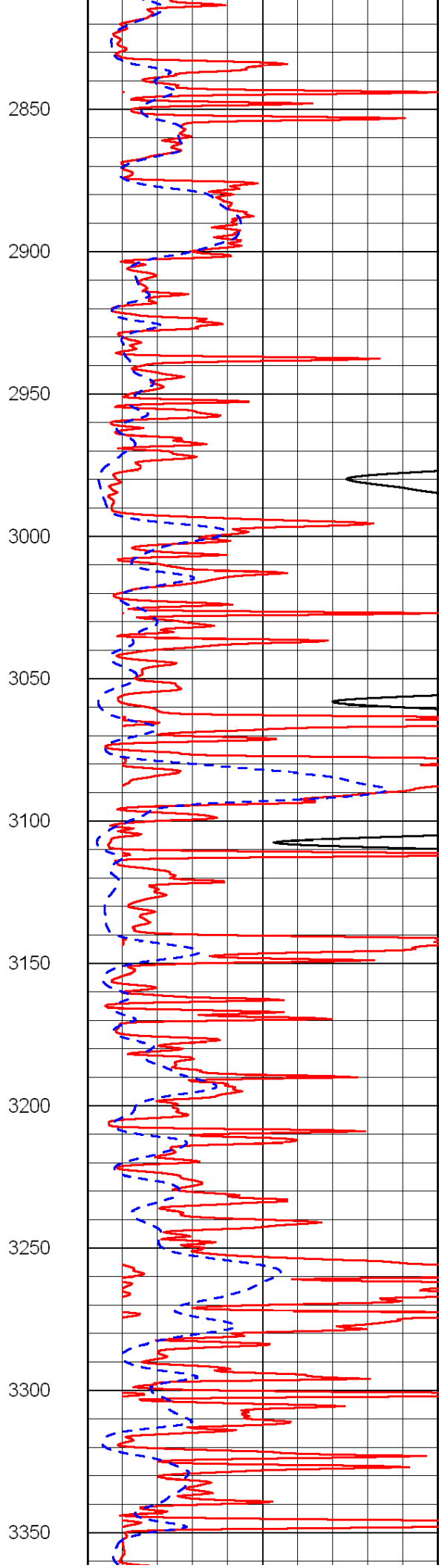
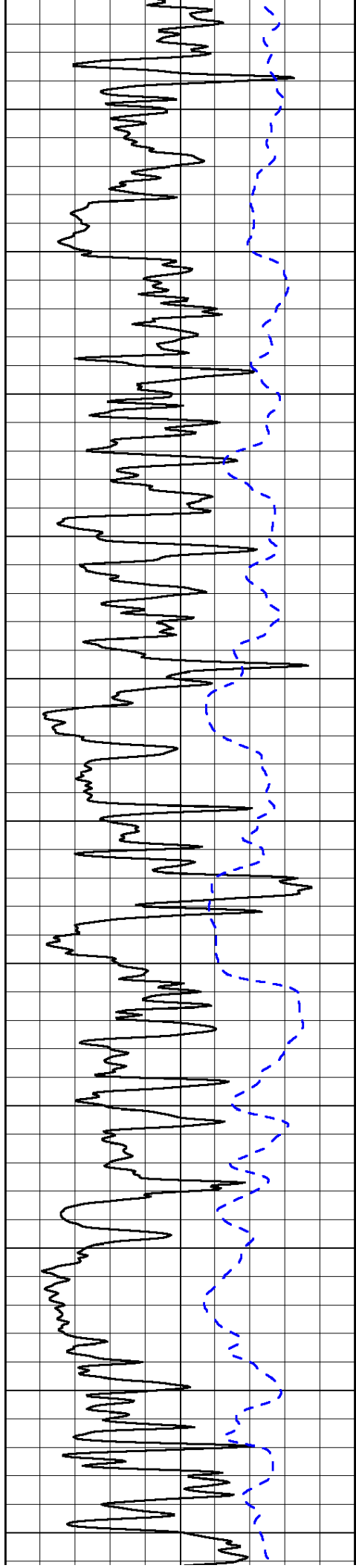
1100

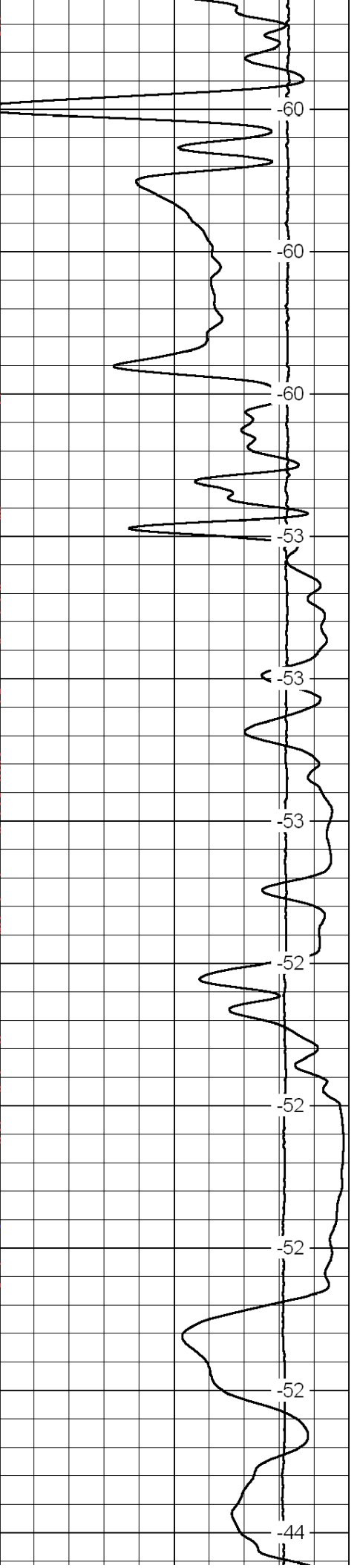
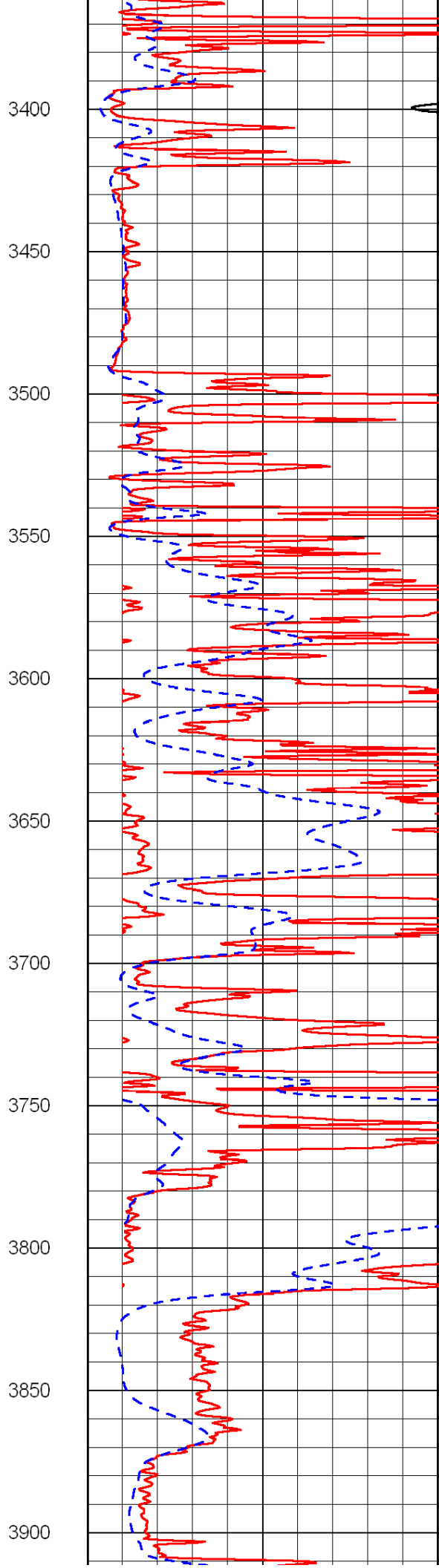
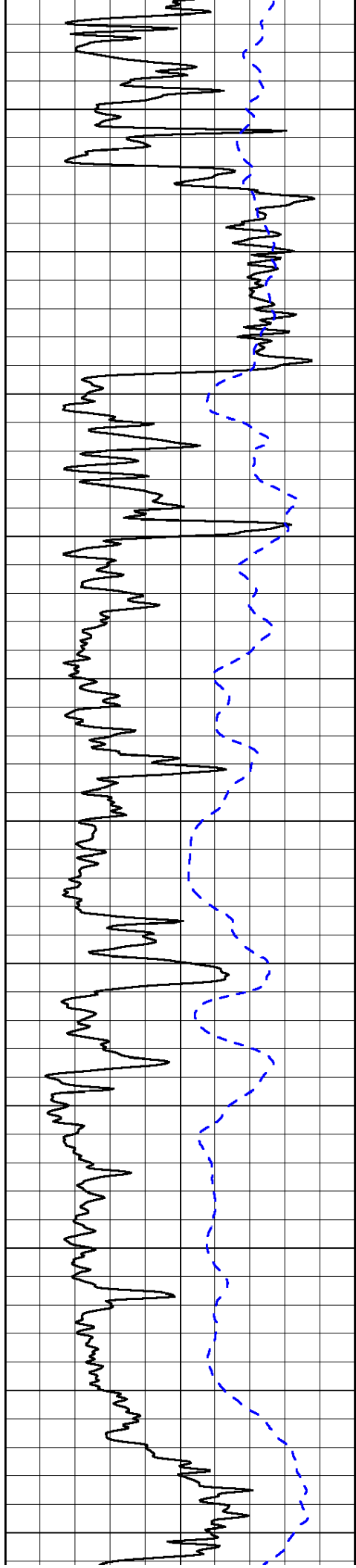
1150

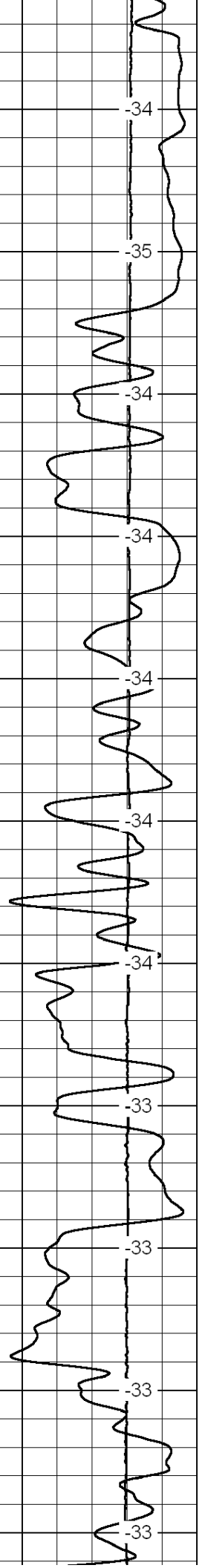
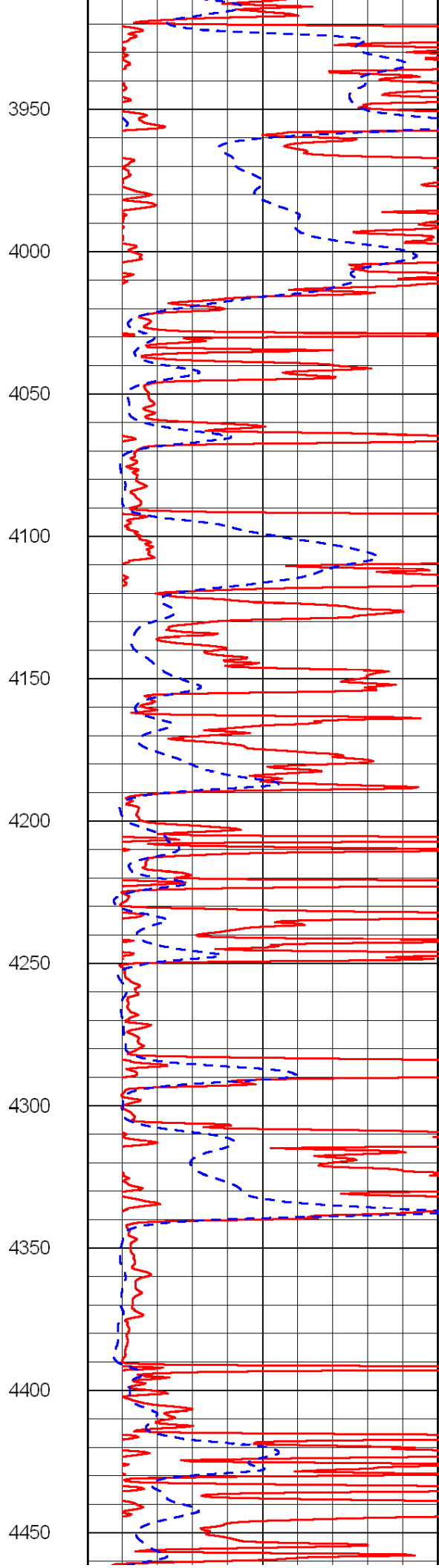
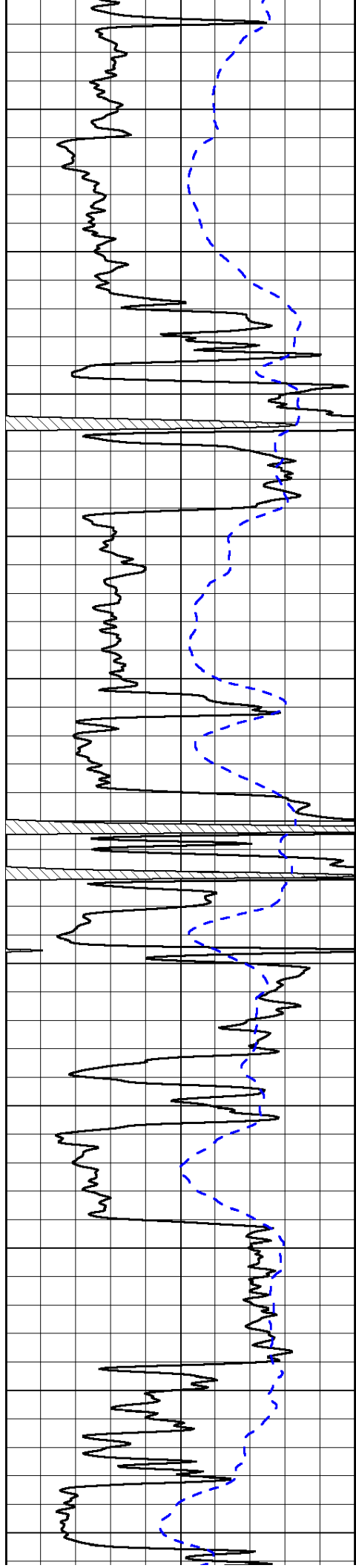


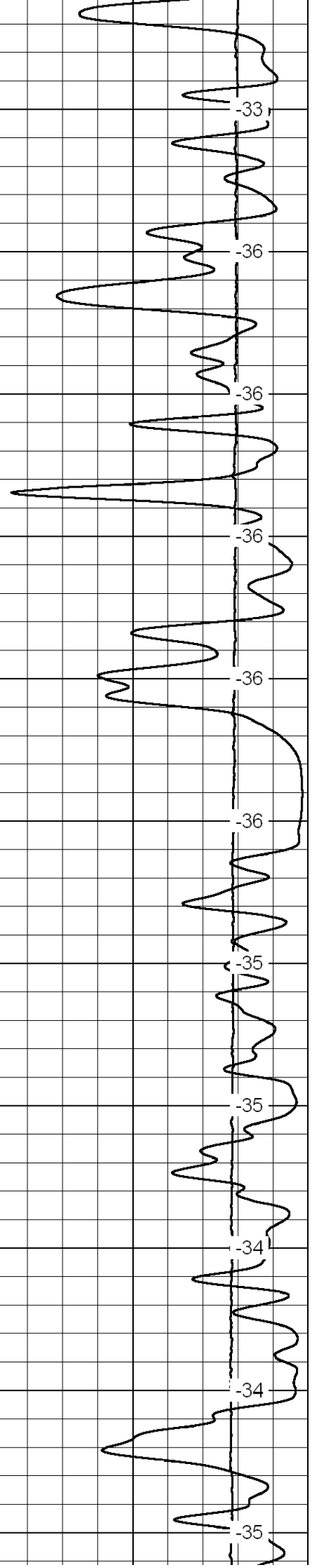
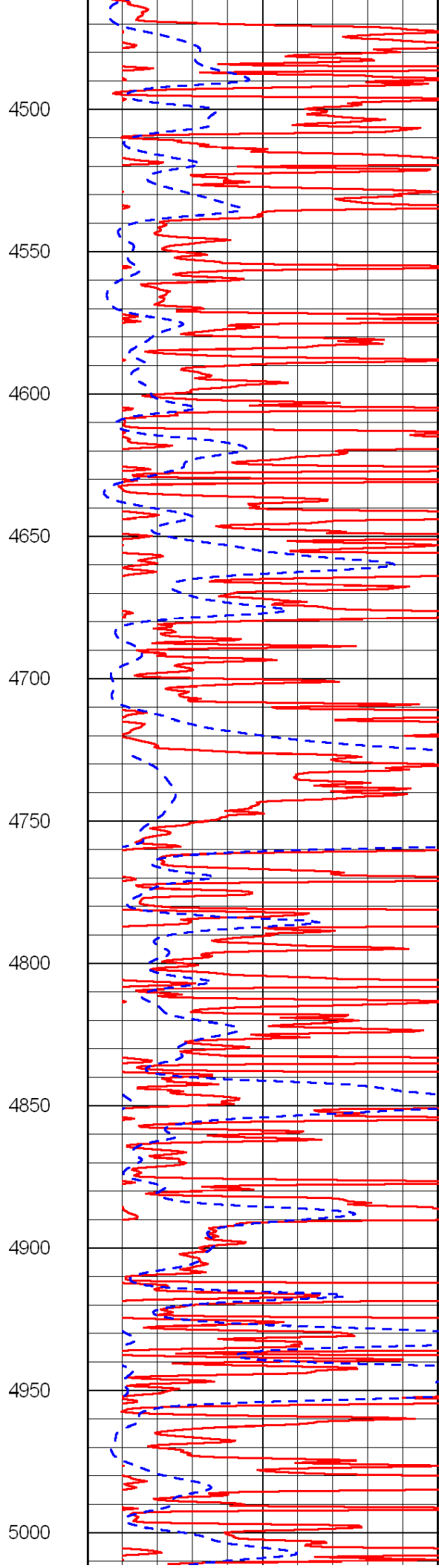
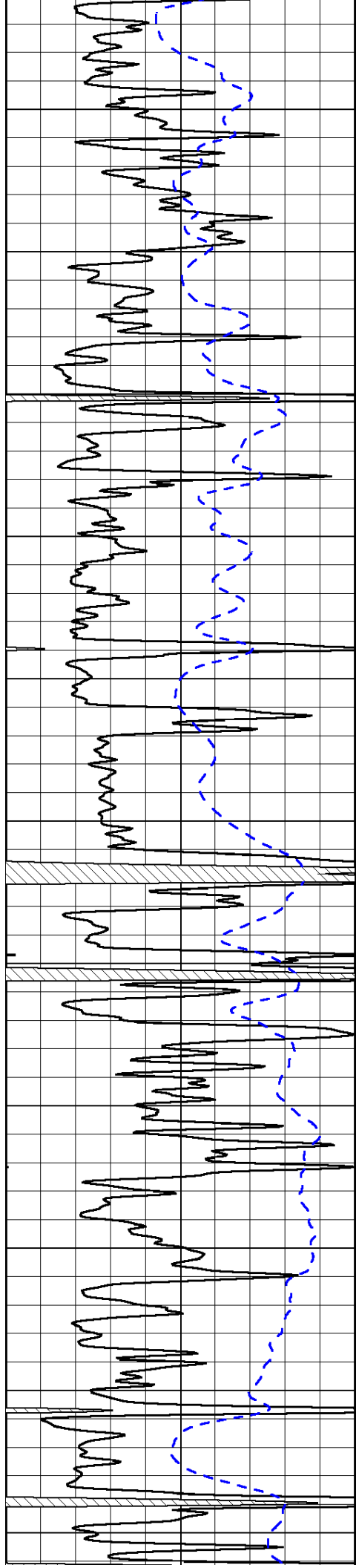


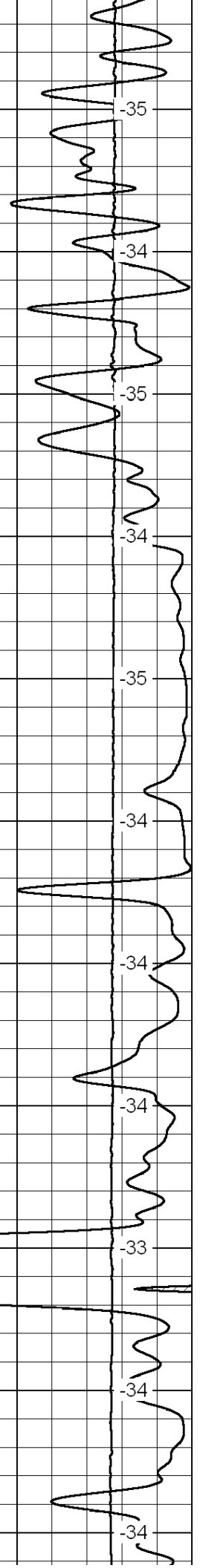
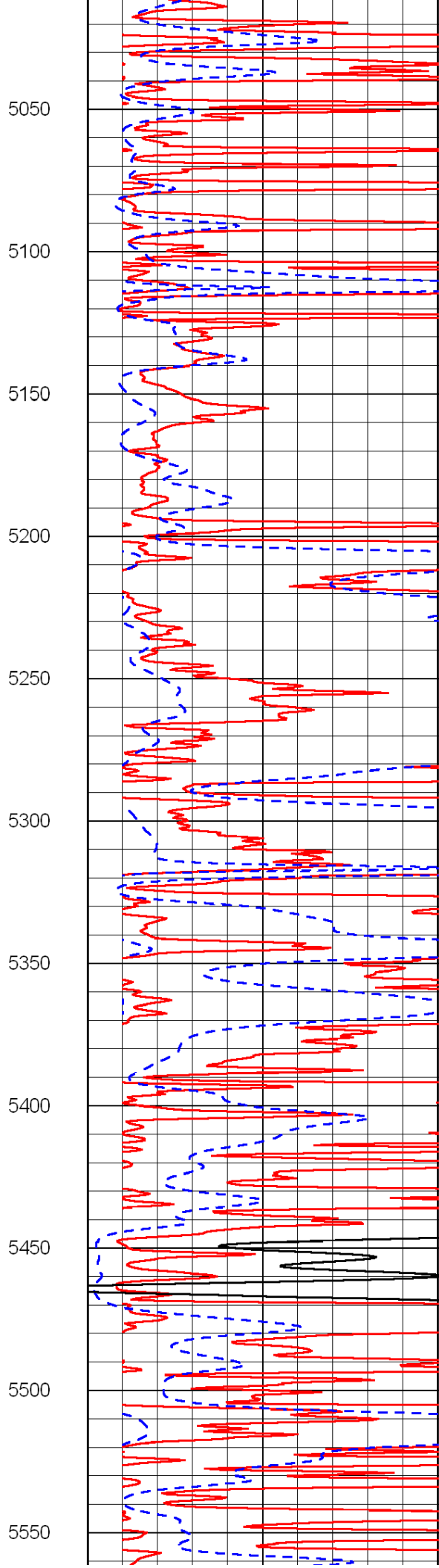
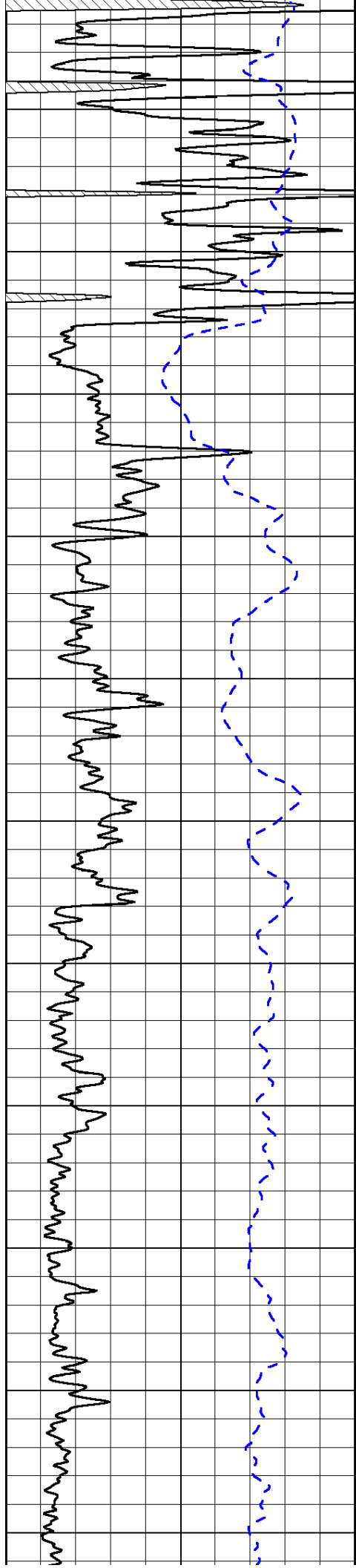


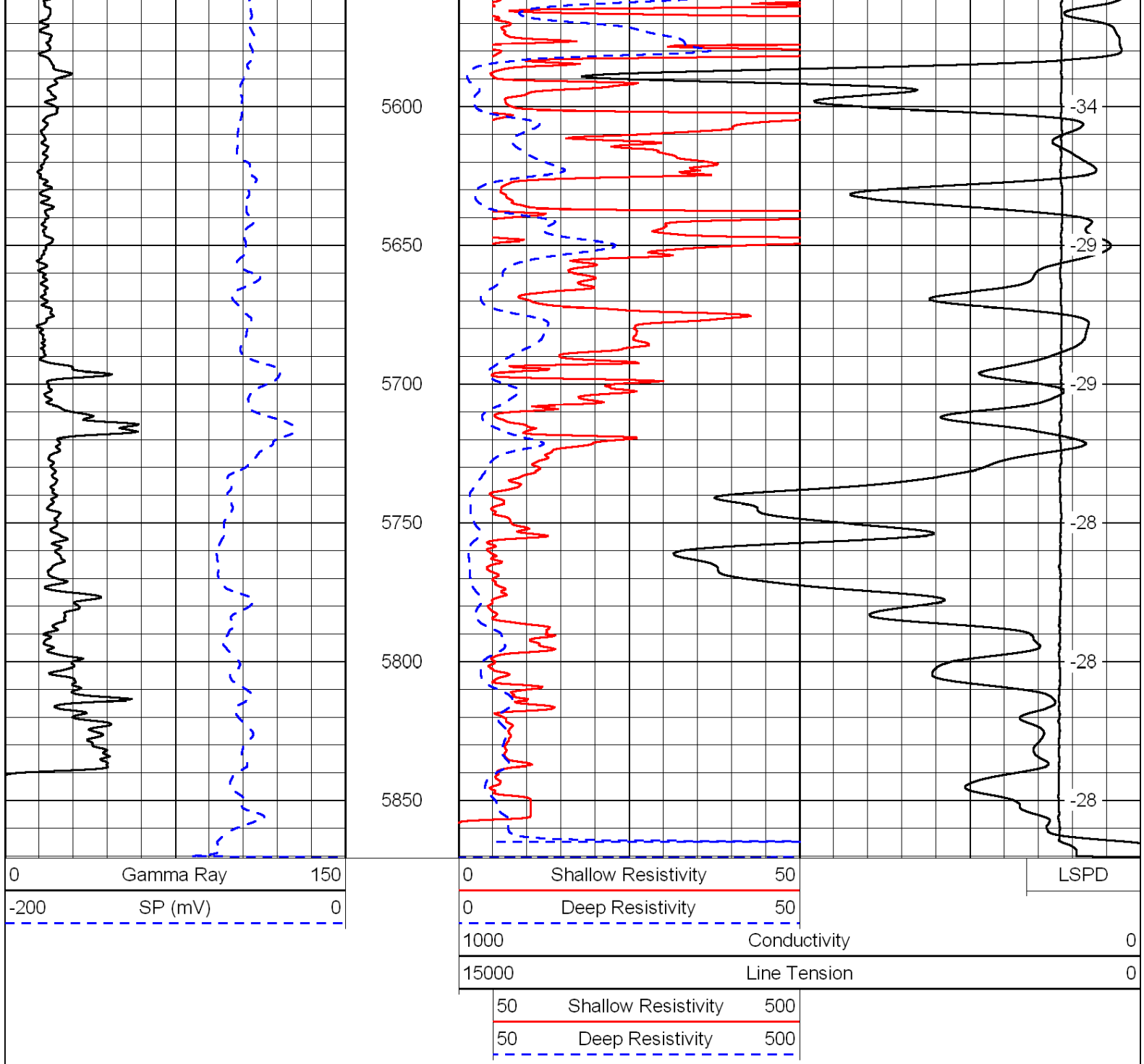




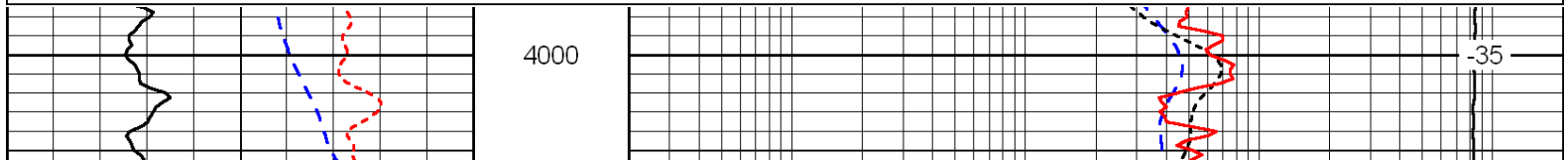
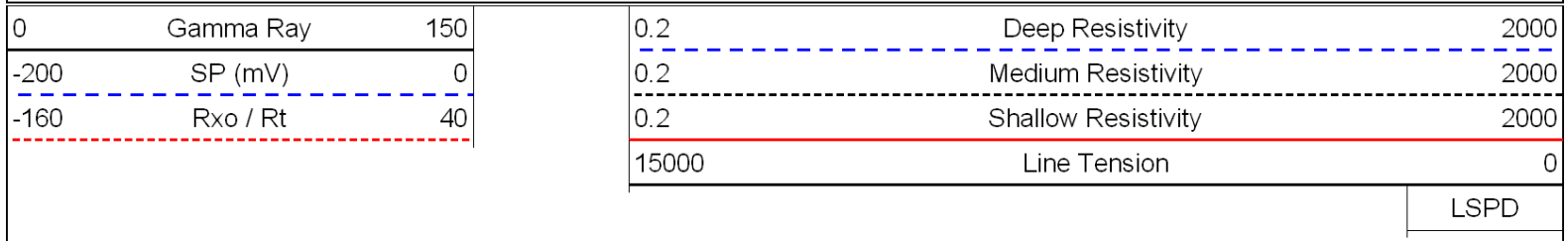


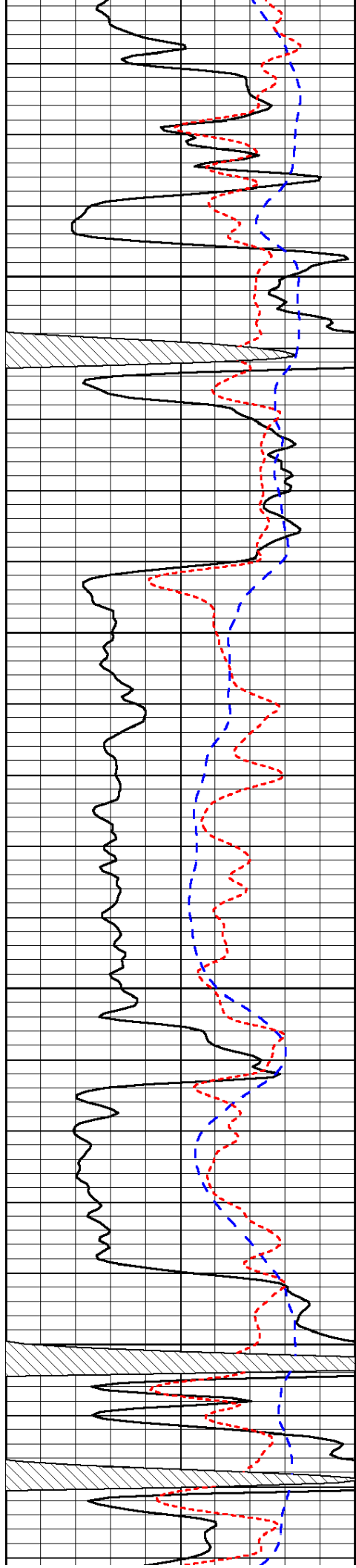






Database File: c:\warrior\data\falcon_fulton#3-11\falcon.db
 Dataset Pathname: dil/flcnstck
 Presentation Format: dil
 Dataset Creation: Wed Aug 25 15:11:31 2010
 Charted by: Depth in Feet scaled 1:240



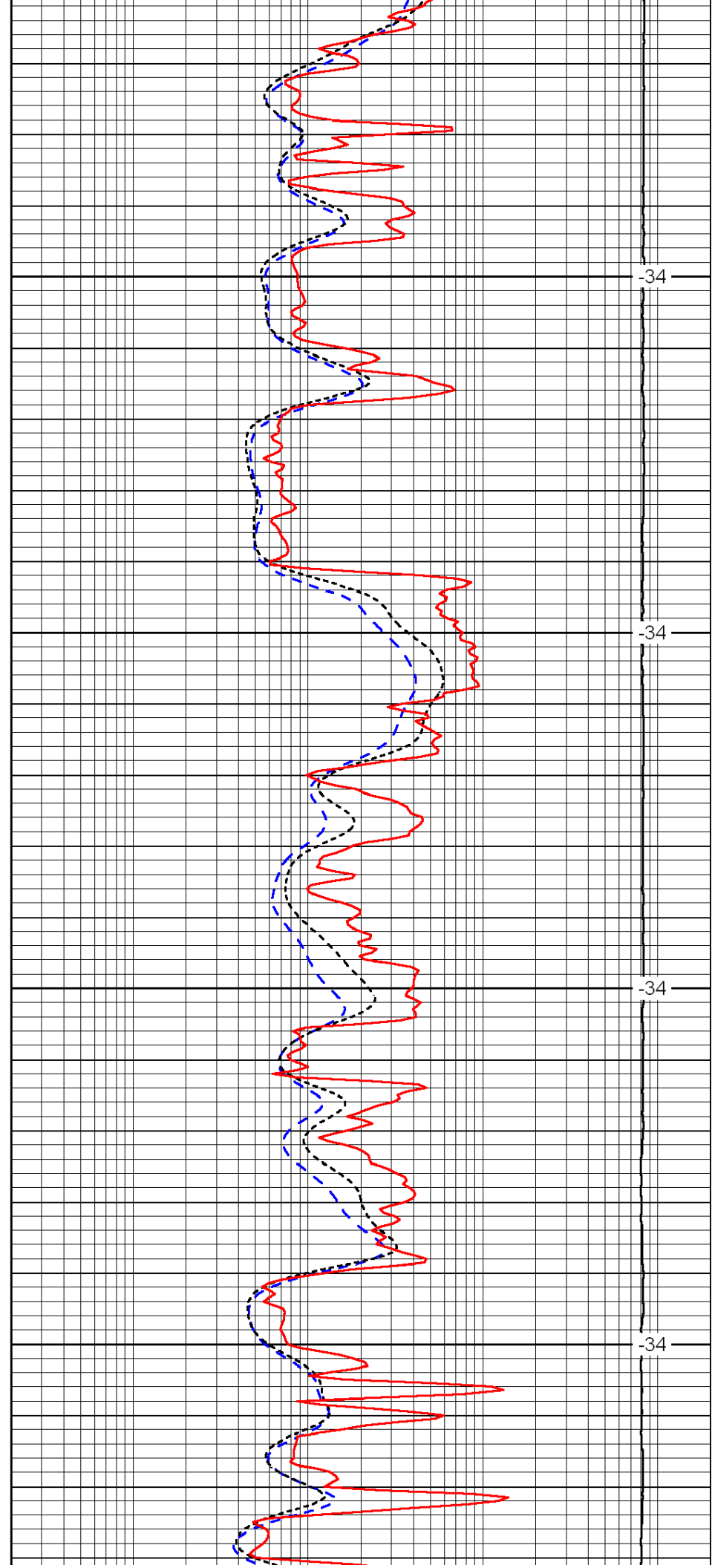


4050

4100

4150

4200

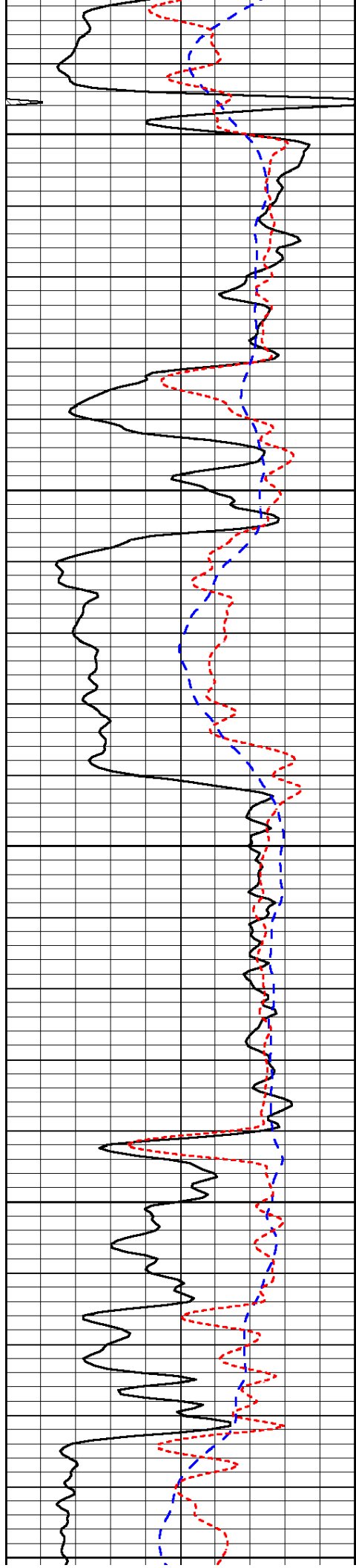


-34

-34

-34

-34



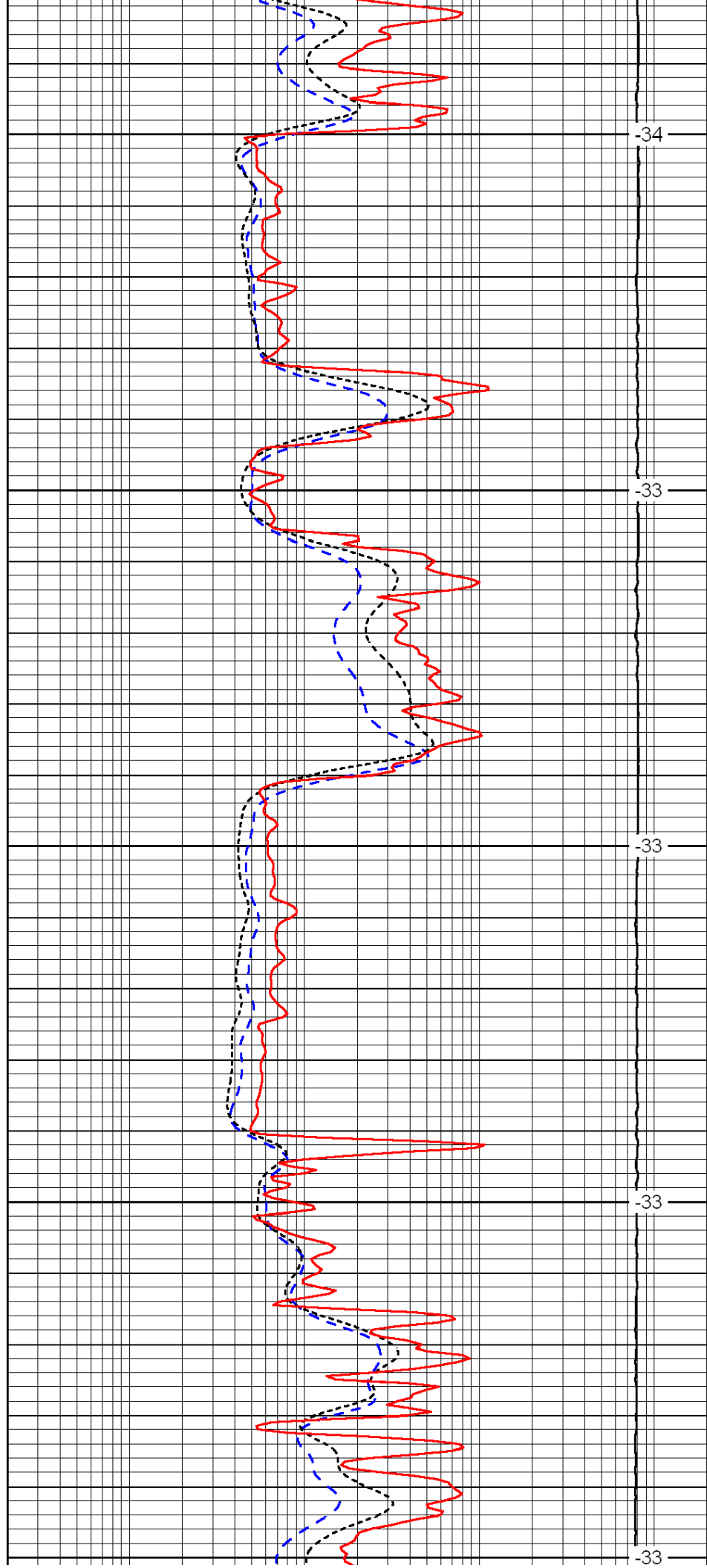
4250

4300

4350

4400

4450



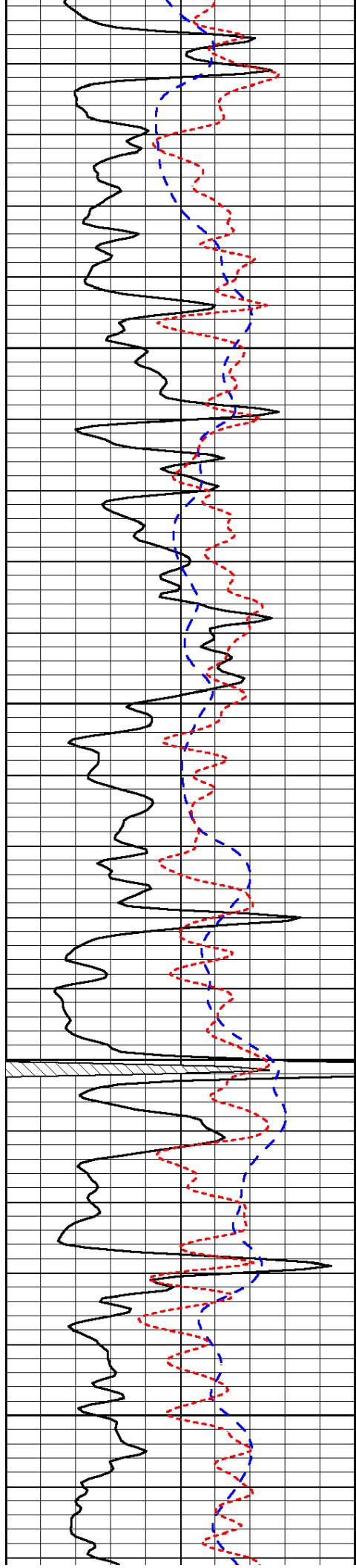
-34

-33

-33

-33

-33

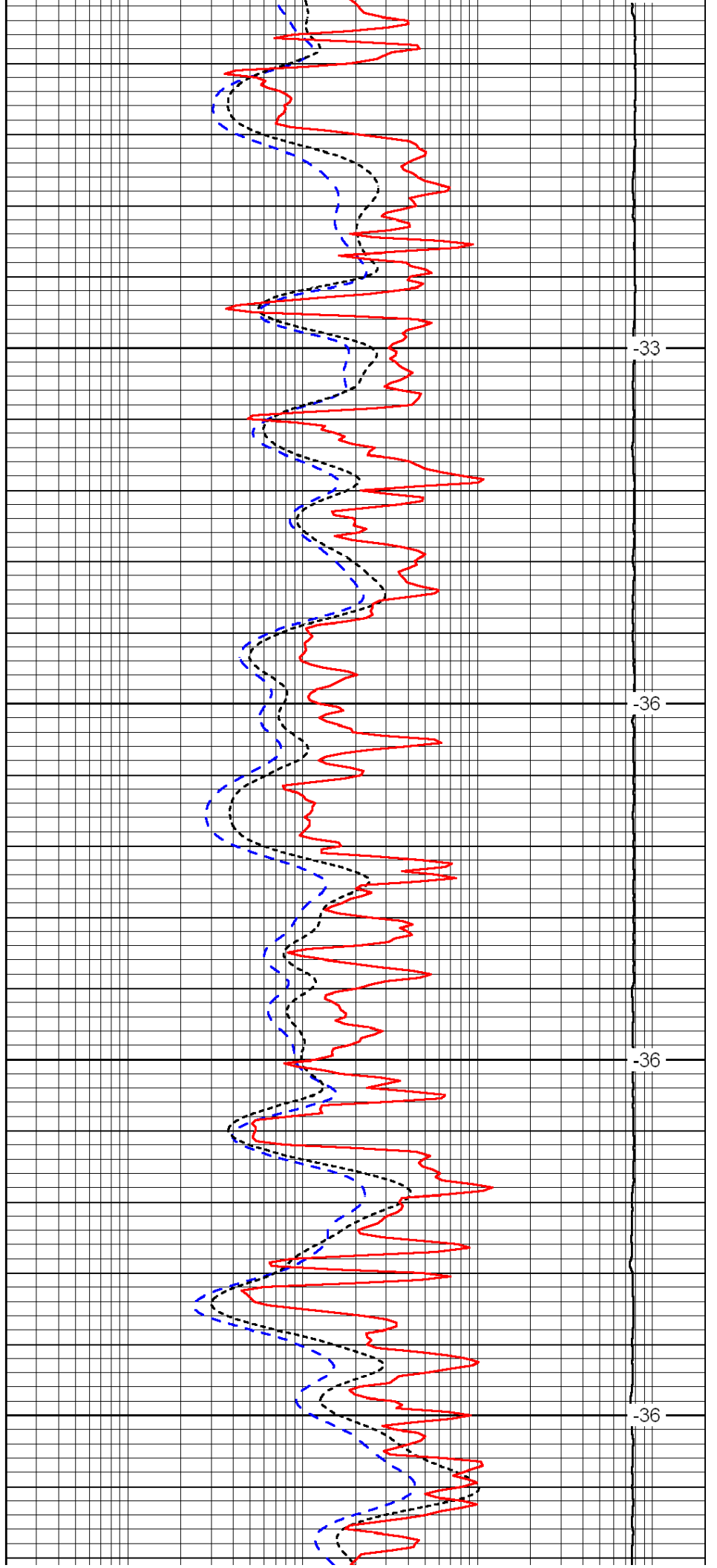


4500

4550

4600

4650

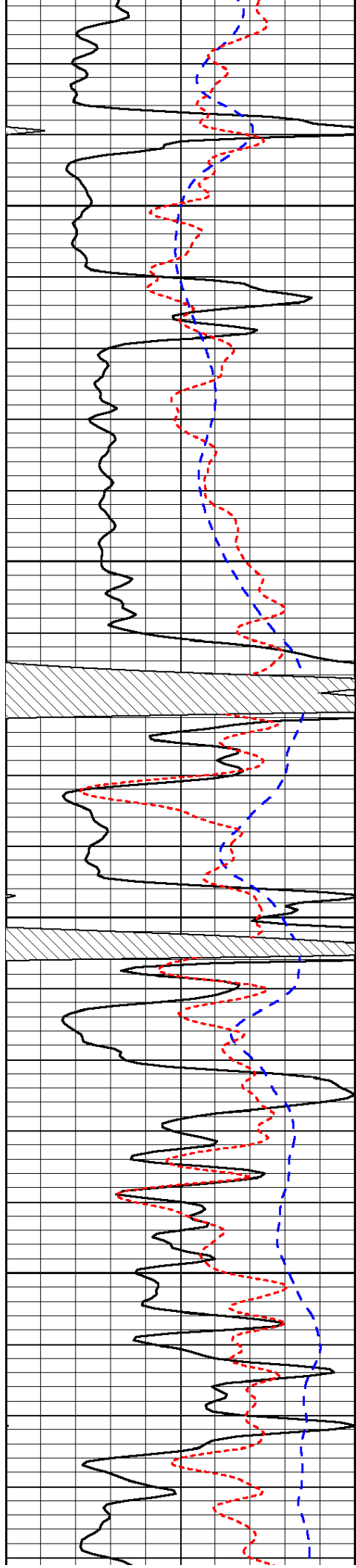


-33

-36

-36

-36

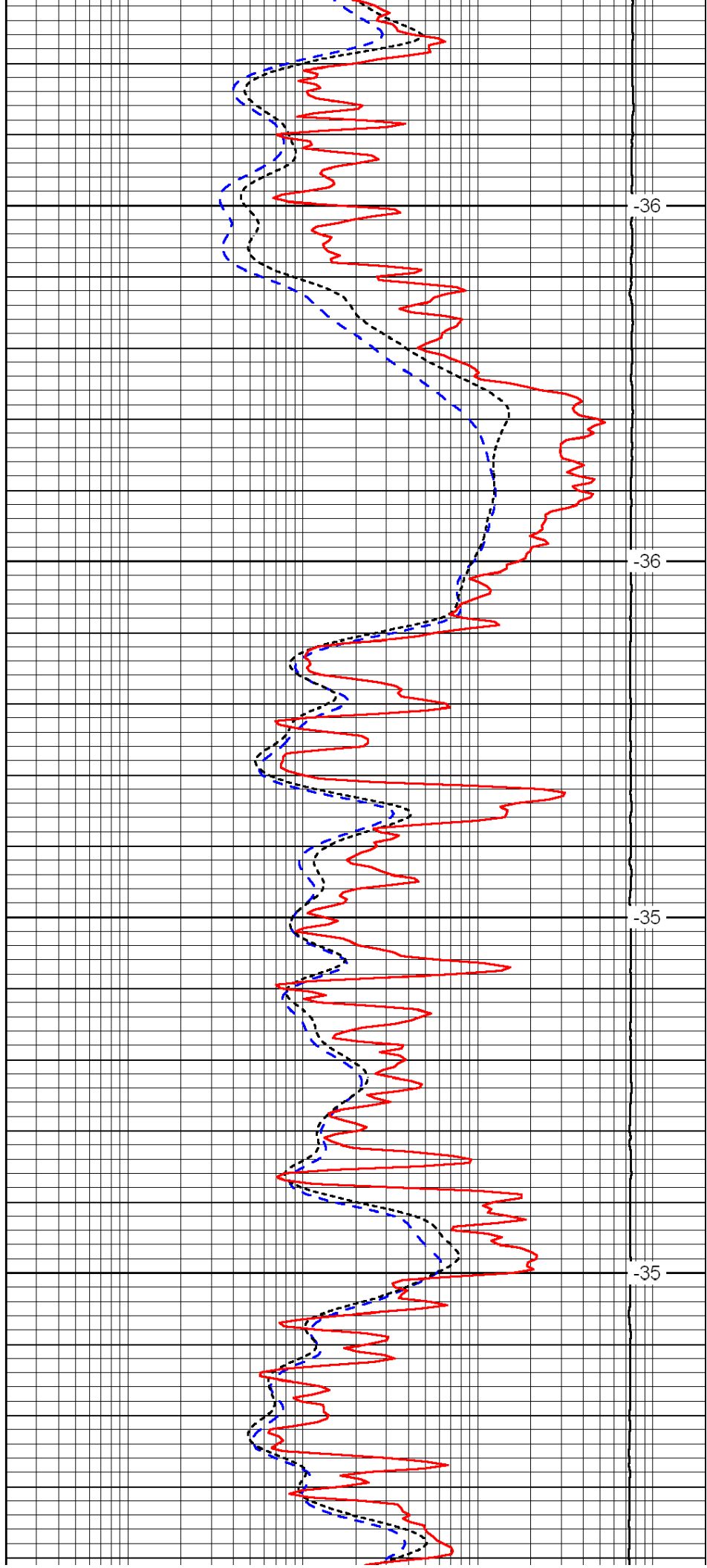


4700

4750

4800

4850

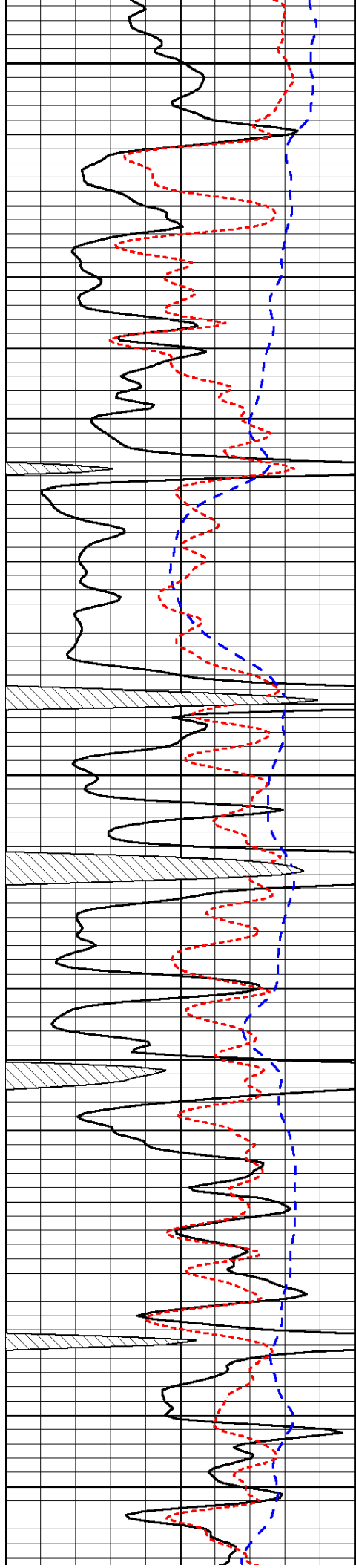


-36

-36

-35

-35



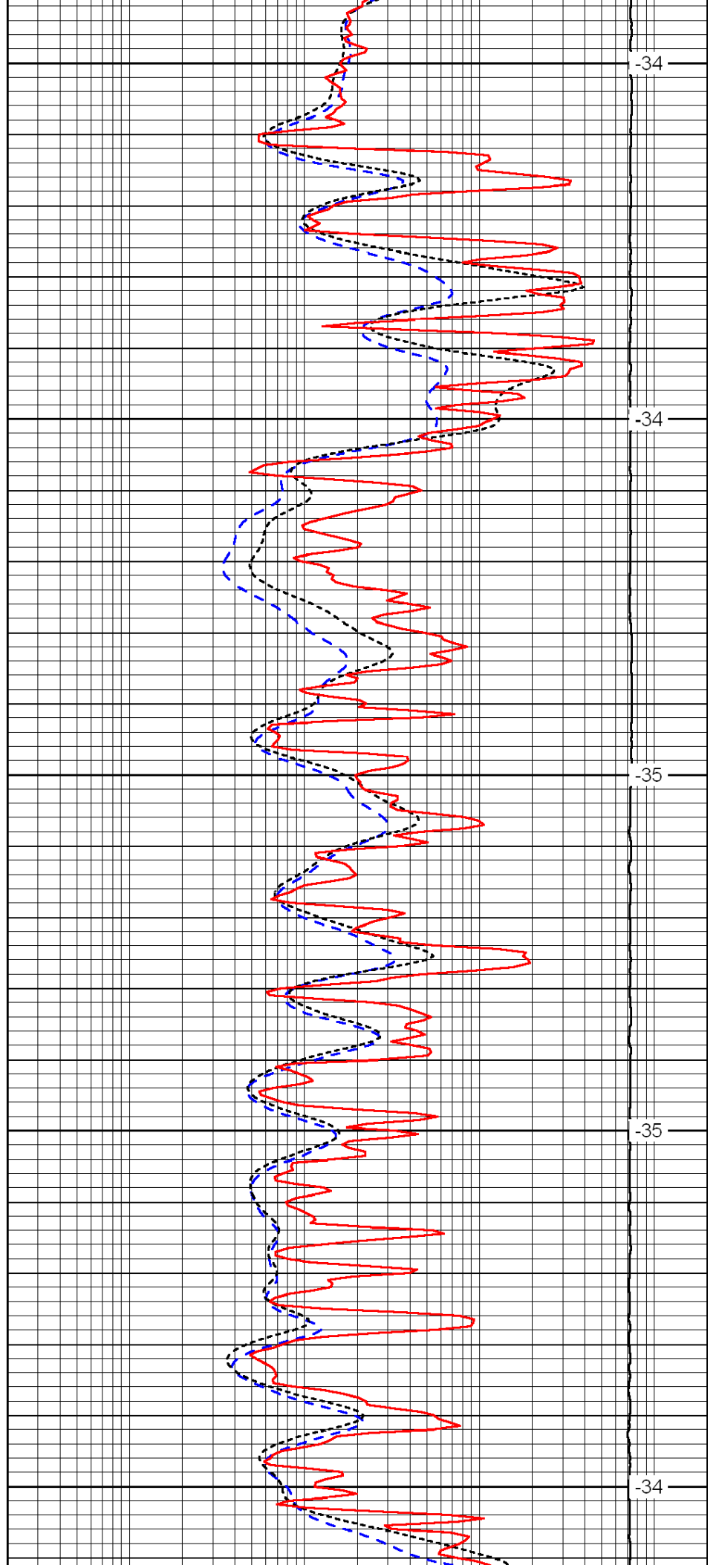
4900

4950

5000

5050

5100



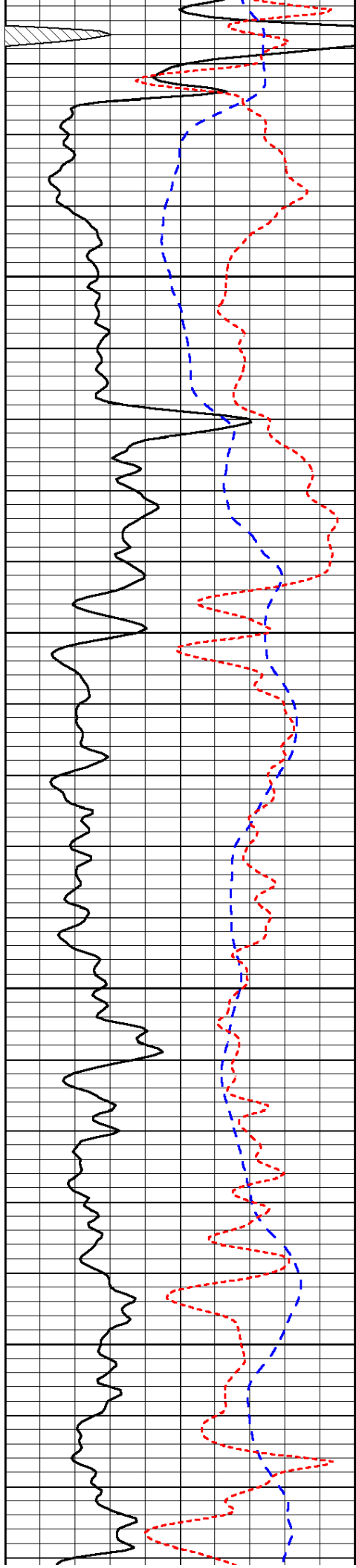
-34

-34

-35

-35

-34

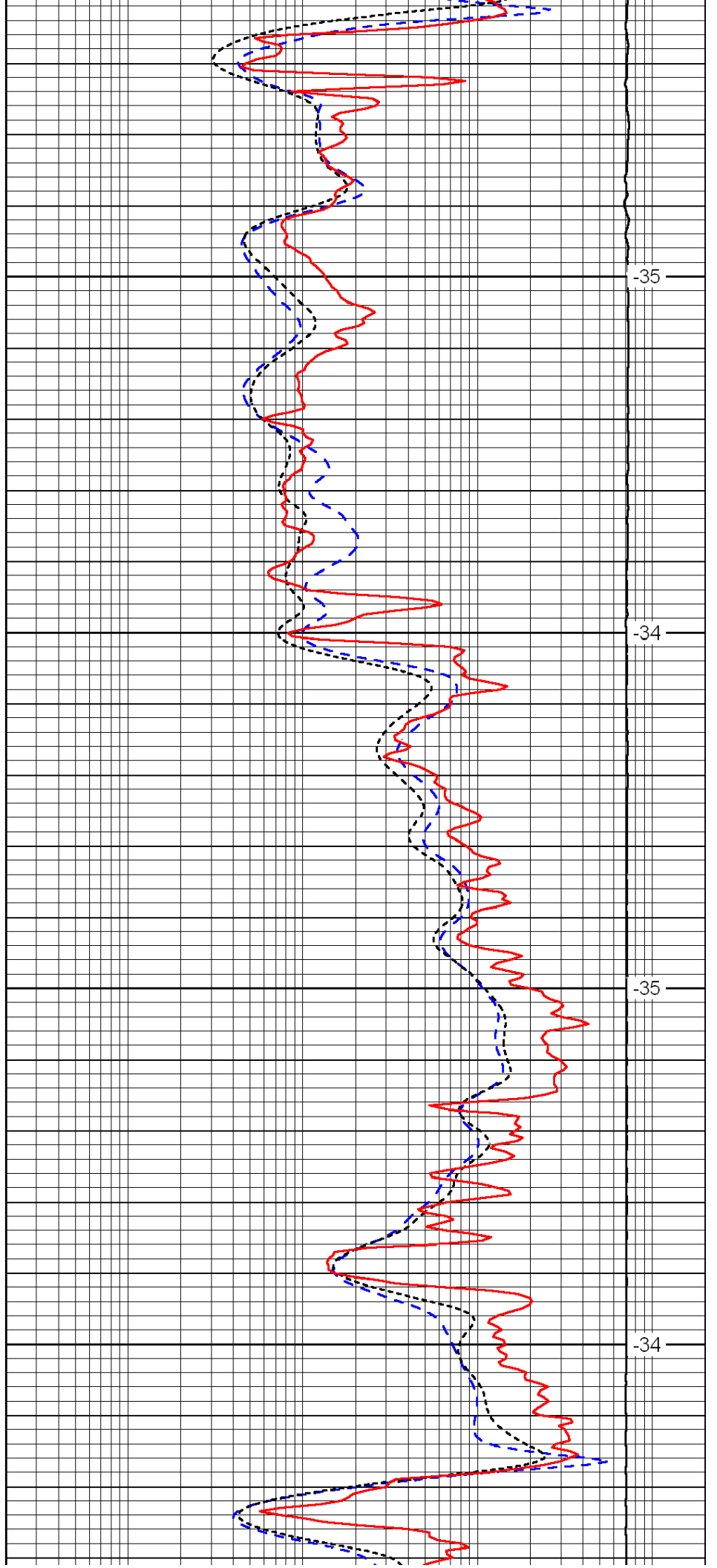


5150

5200

5250

5300

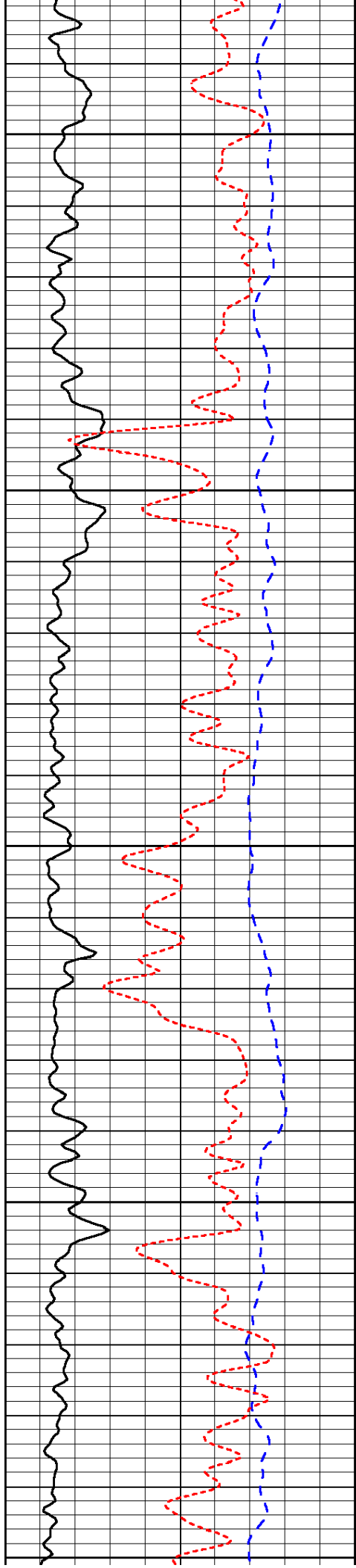


-35

-34

-35

-34



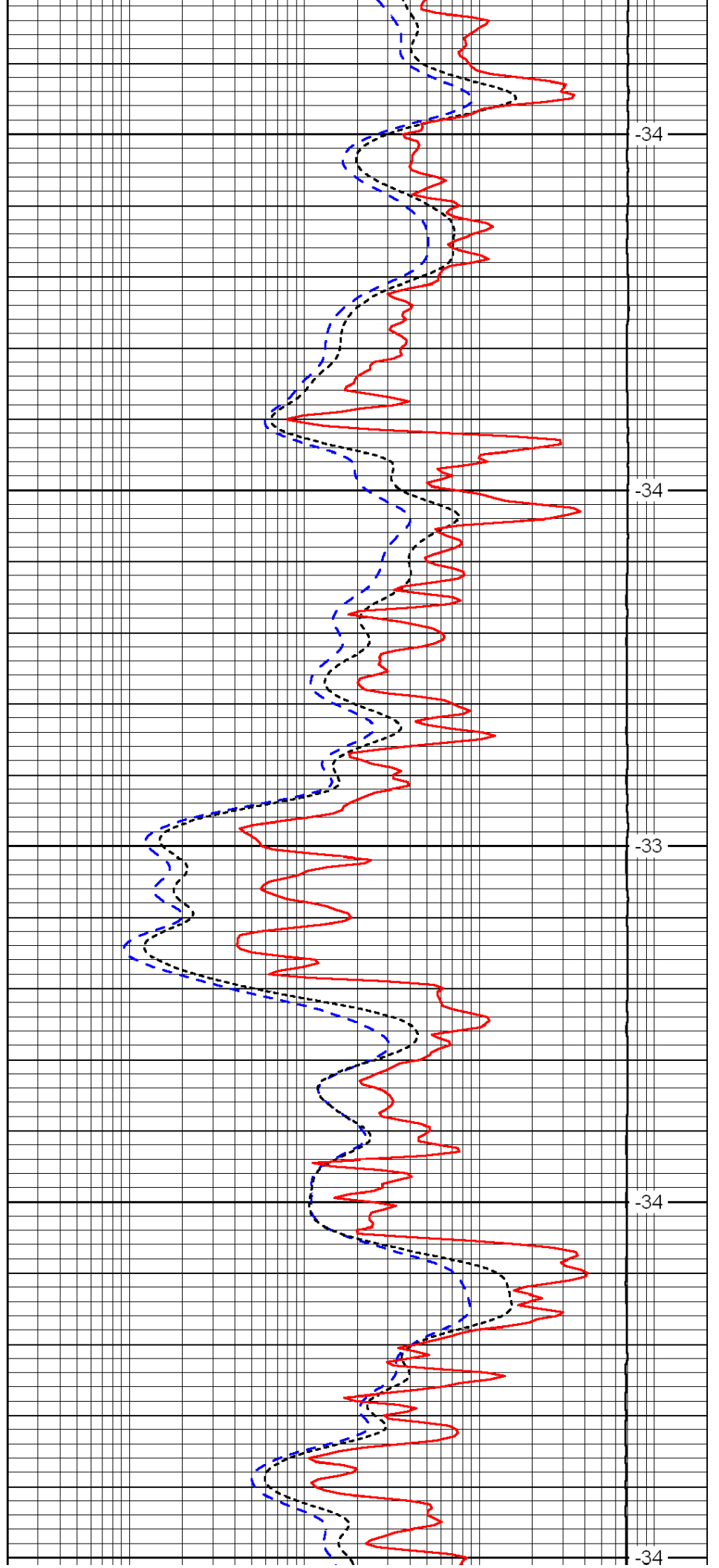
5350

5400

5450

5500

5550



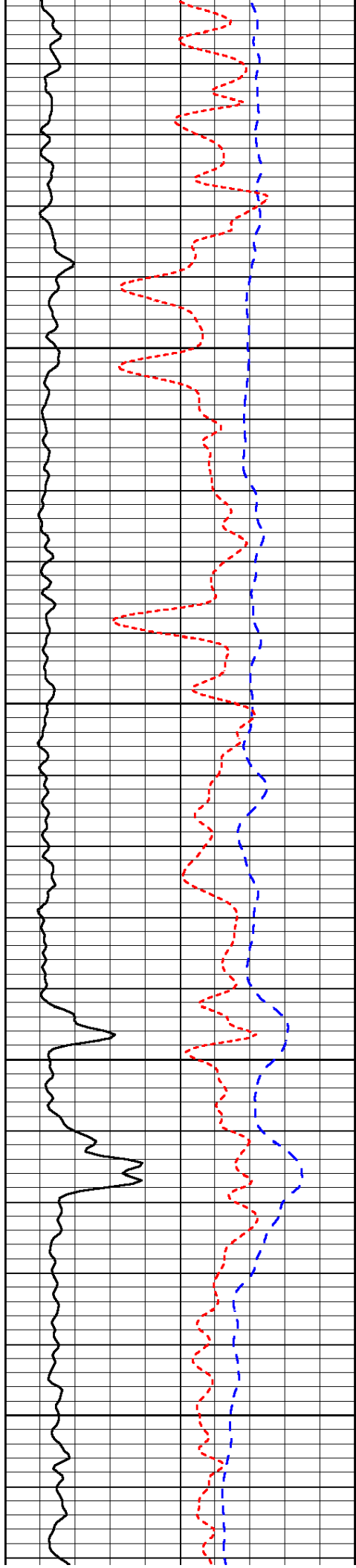
-34

-34

-33

-34

-34

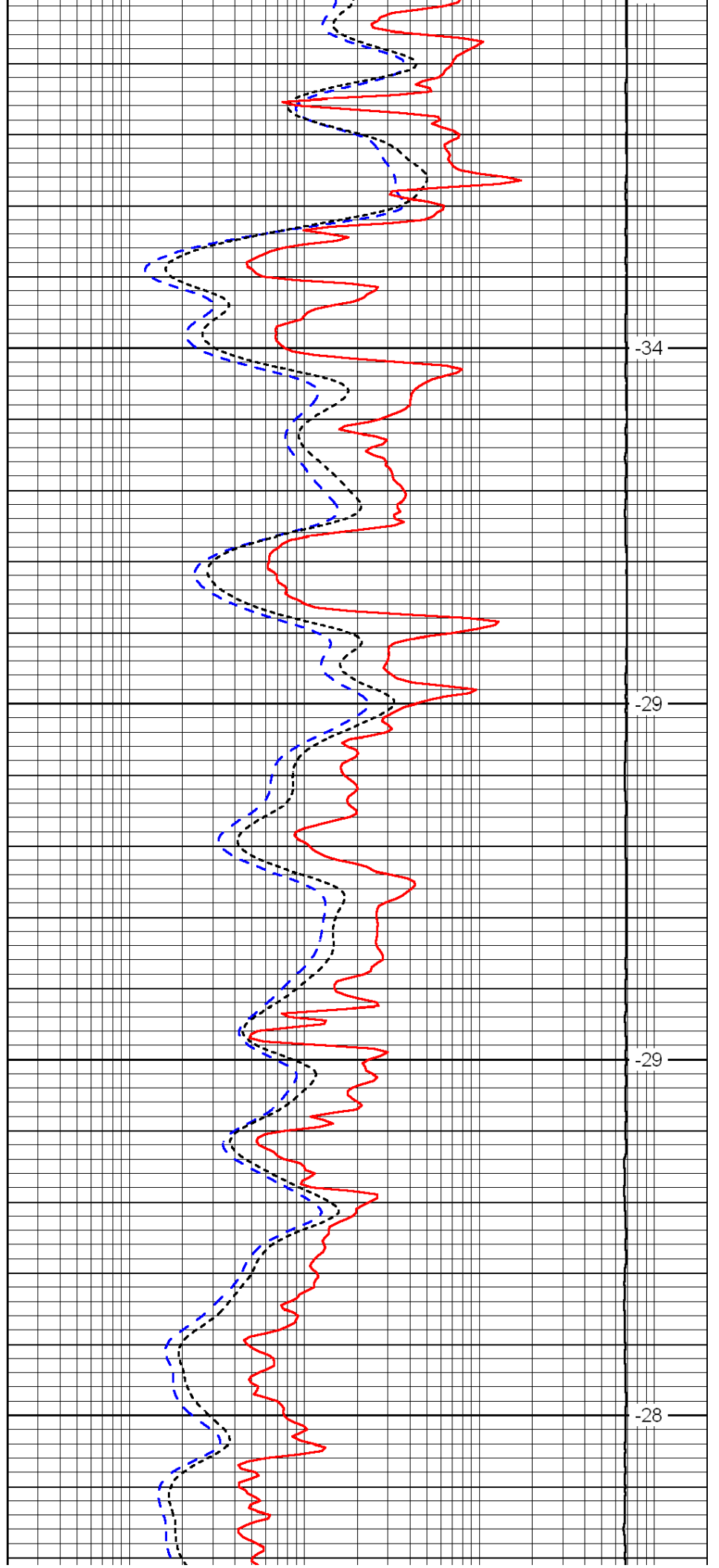


5600

5650

5700

5750

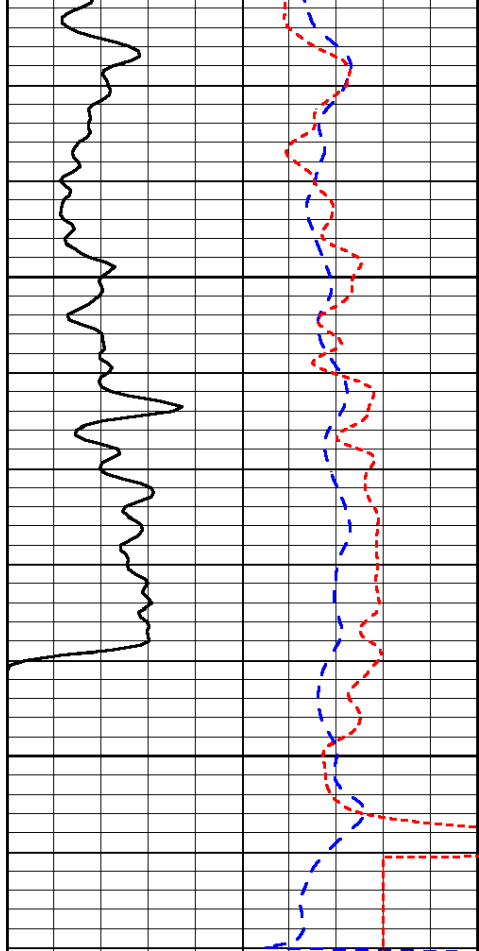


-34

-29

-29

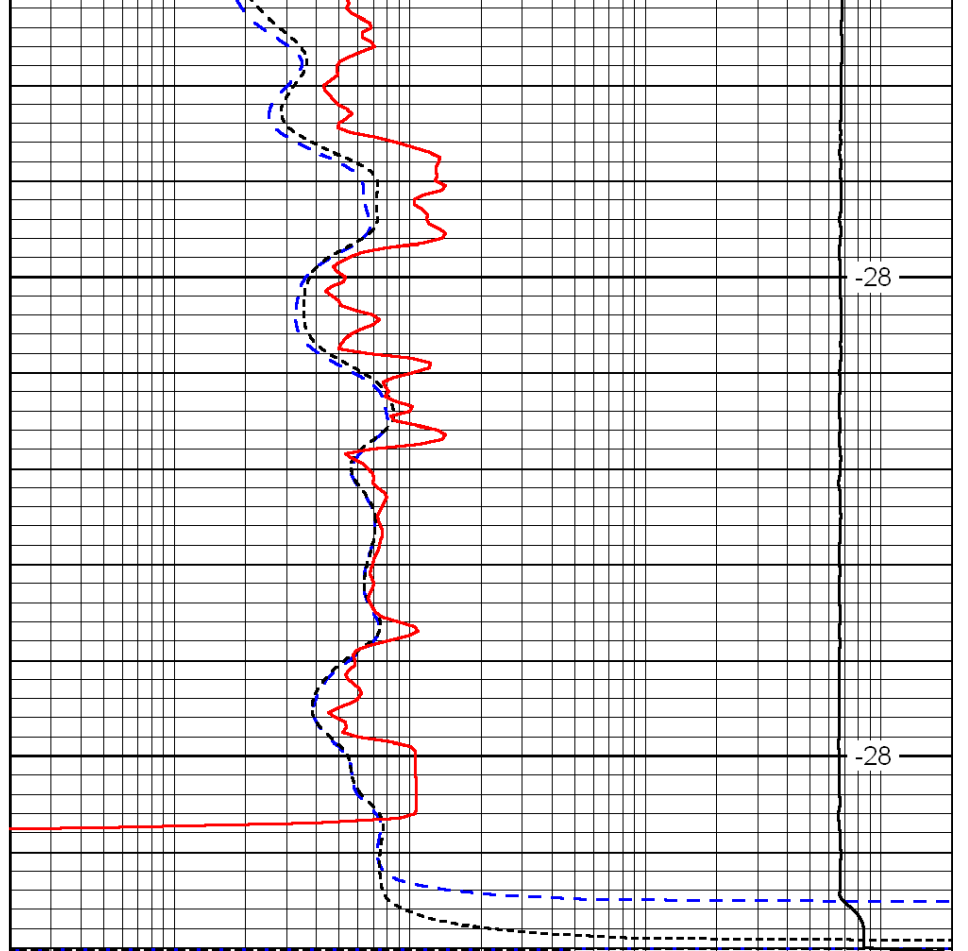
-28



0	Gamma Ray	150
-200	SP (mV)	0
-160	Rxo / Rt	40

5800

5850



-28

-28

0.2	Deep Resistivity	2000
0.2	Medium Resistivity	2000
0.2	Shallow Resistivity	2000
15000	Line Tension	0

LSPD