



# Dual Compensated Porosity Log

DIGITAL LOG (785) 625-3858

API No. 15-025-21,512-00-00

Company **Falcon Exploration, Inc.**  
 Well **Fulton No. 3-11 (NW)**  
 Field **Liberty River**  
 County **Clark** State **Kansas**

Location **N2 SE NE NW  
 930' FNL & 2,310' FWL**

Sec: **11** Twp: **31S** Rge: **22W**

Other Services  
 DIL  
 MEL/BHCS

Permanent Datum **Ground Level** Elevation **2151**  
 Log Measured From **Kelly Bushing** **10 Ft. Above Perm. Datum**  
 Drilling Measured From **Kelly Bushing**

K.B. 2161  
 D.F. 2151  
 G.L. 2151

Date **8/25/2010**

Run Number **One**

Type Log **CNL / CDL**

Depth Driller **5862**

Depth Logger **5865**

Bottom Logged Interval **5844**

Top Logged Interval **4000**

Type Fluid In Hole **Chemical**

Salinity, PPM CL **9100**

Density **9.0**

Level **Full**

Max. Rec. Temp. F **135**

Operating Rig Time **6 Hours**

Equipment -- Location **10 Hays**

Recorded By **J. Long**

Witnessed By **Keith Reavis**

Borehole Record				Casing Record			
Run No.	Bit	From	To	Size	Wgt.	From	To
1	12.25	00	699	8.625	24#	00	699
2	7.875	699	5862				

<<< Fold Here >>>

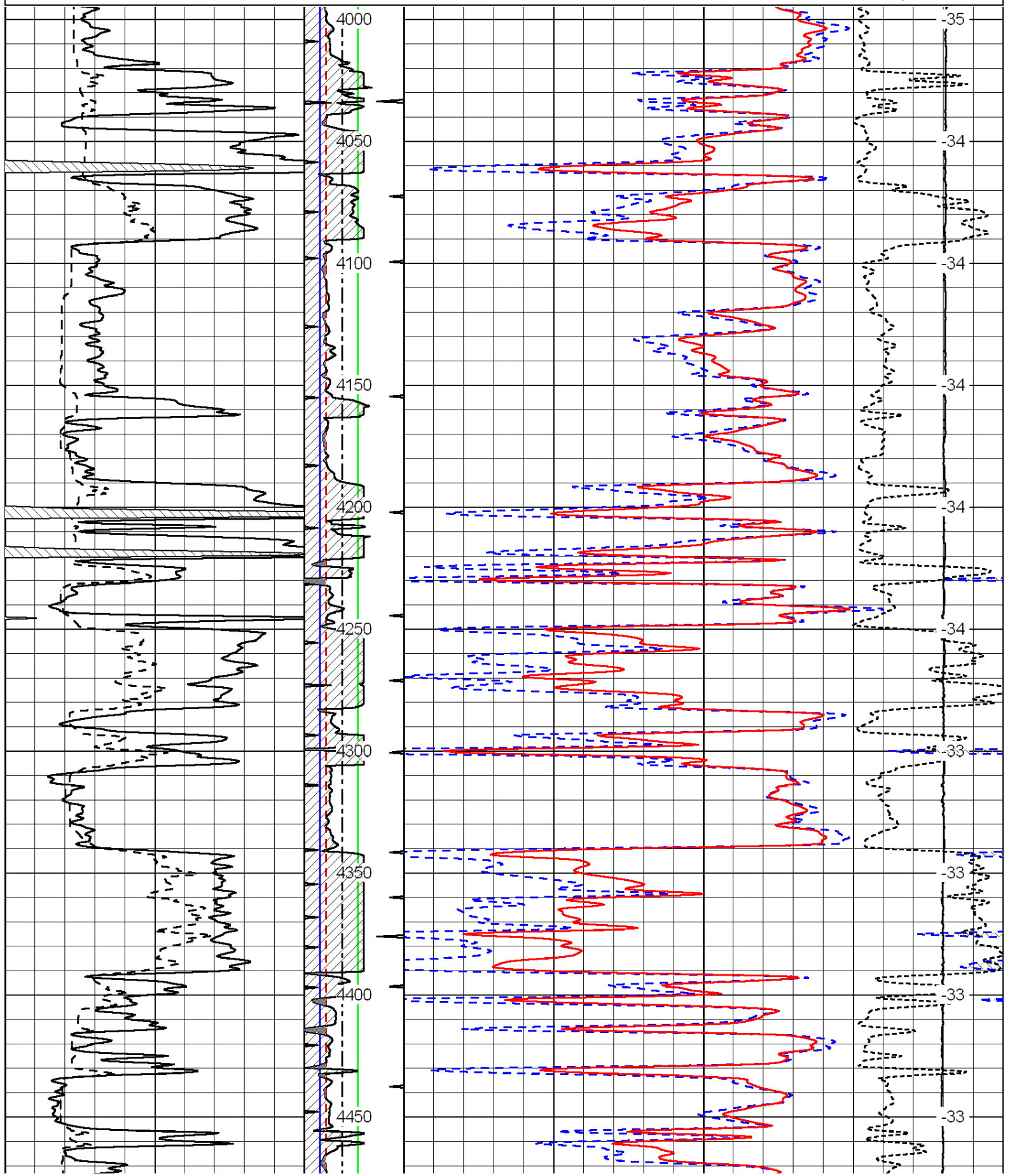
All interpretations are opinions based on inferences from electrical or other measurements and we cannot and do not guarantee the accuracy or correctness of any interpretation, and we shall not, except in the case of gross or willful negligence on our part, be liable or responsible for any loss, costs, damages, or expenses incurred or sustained by anyone resulting from any interpretation made by any of our officers, agents or employees. These interpretations are also subject to our general terms and conditions set out in our current Price Schedule.

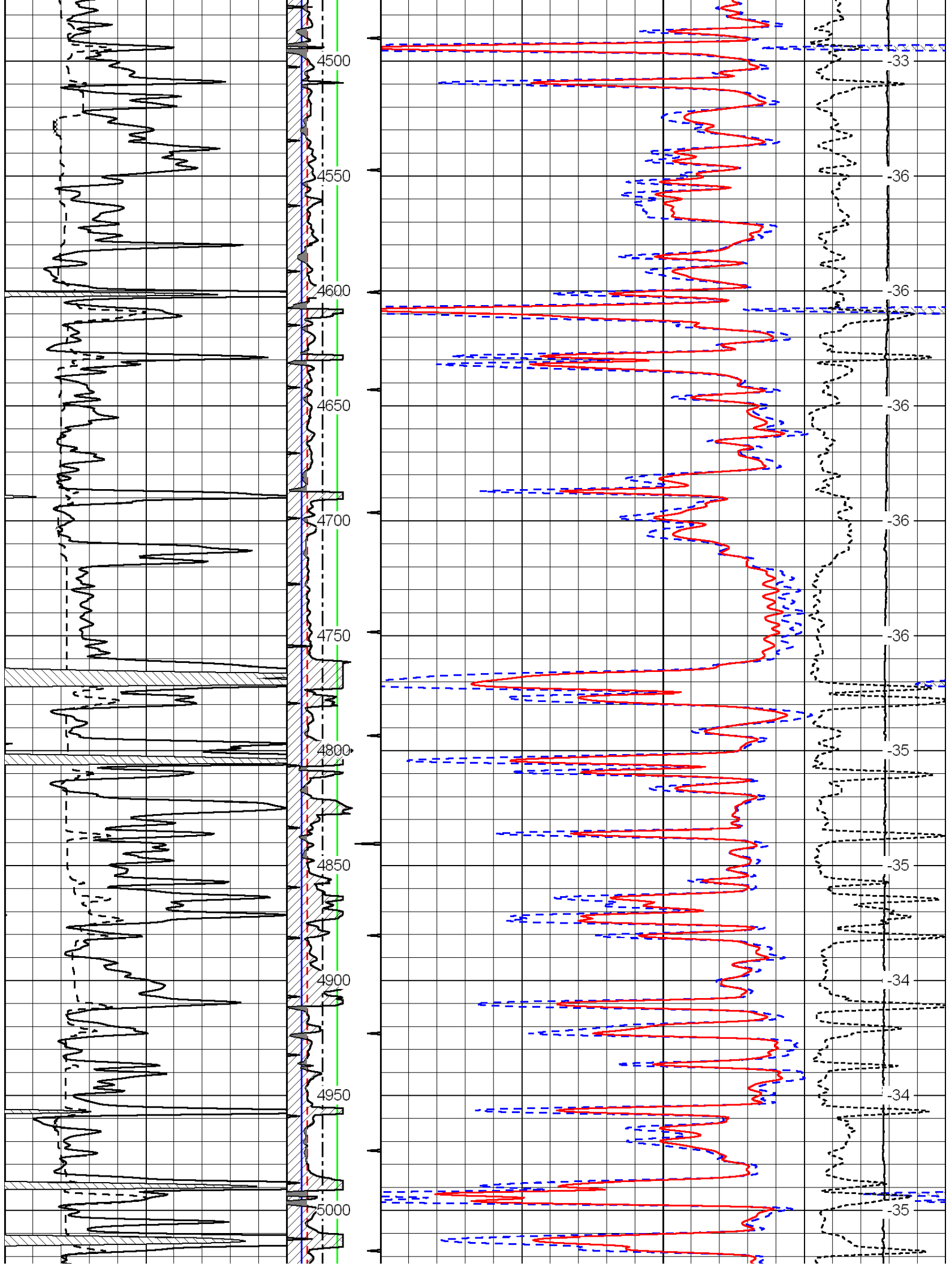
Comments

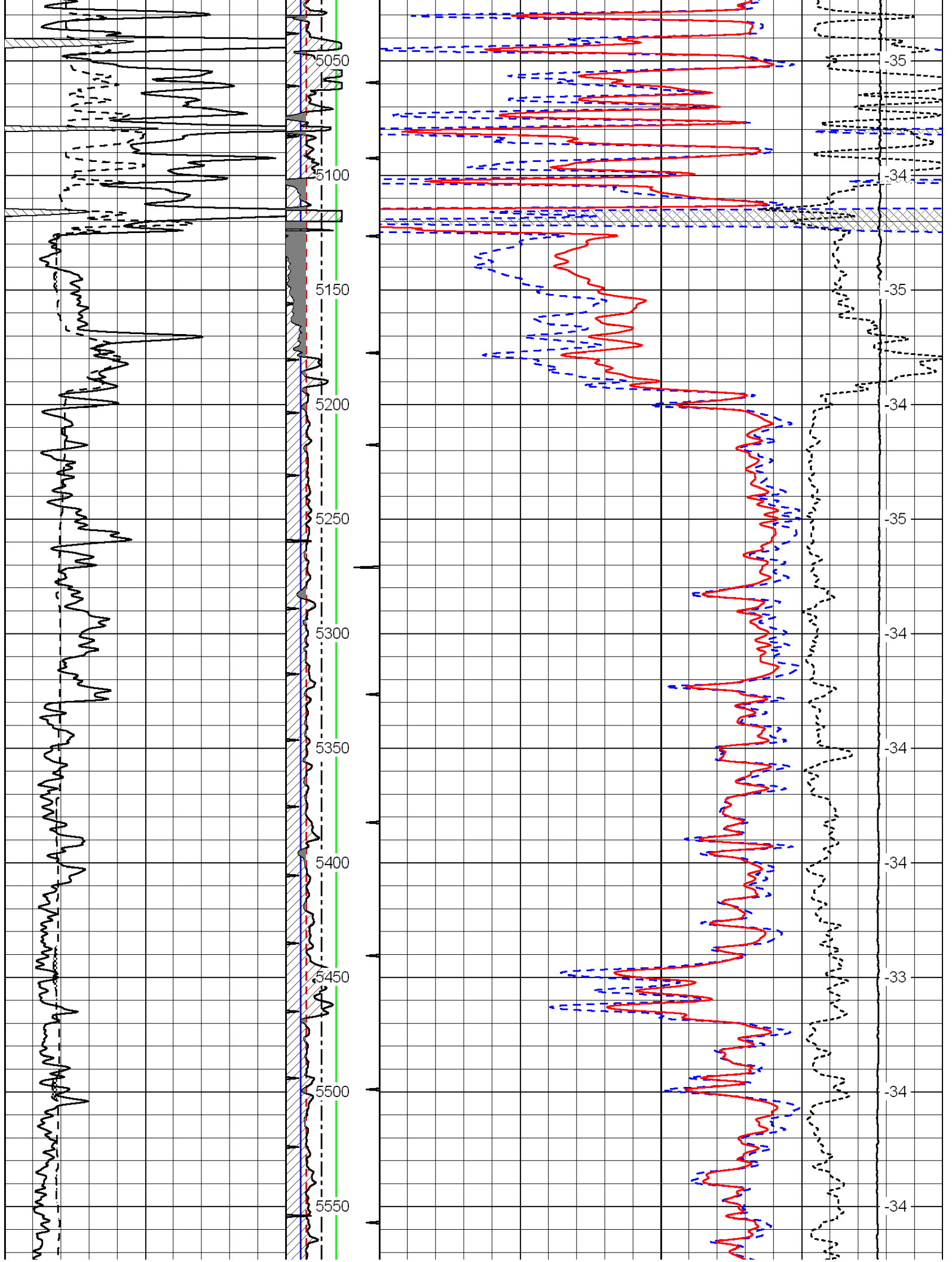
Thank you for using Log-Tech, Inc.  
 (785) 625-3858

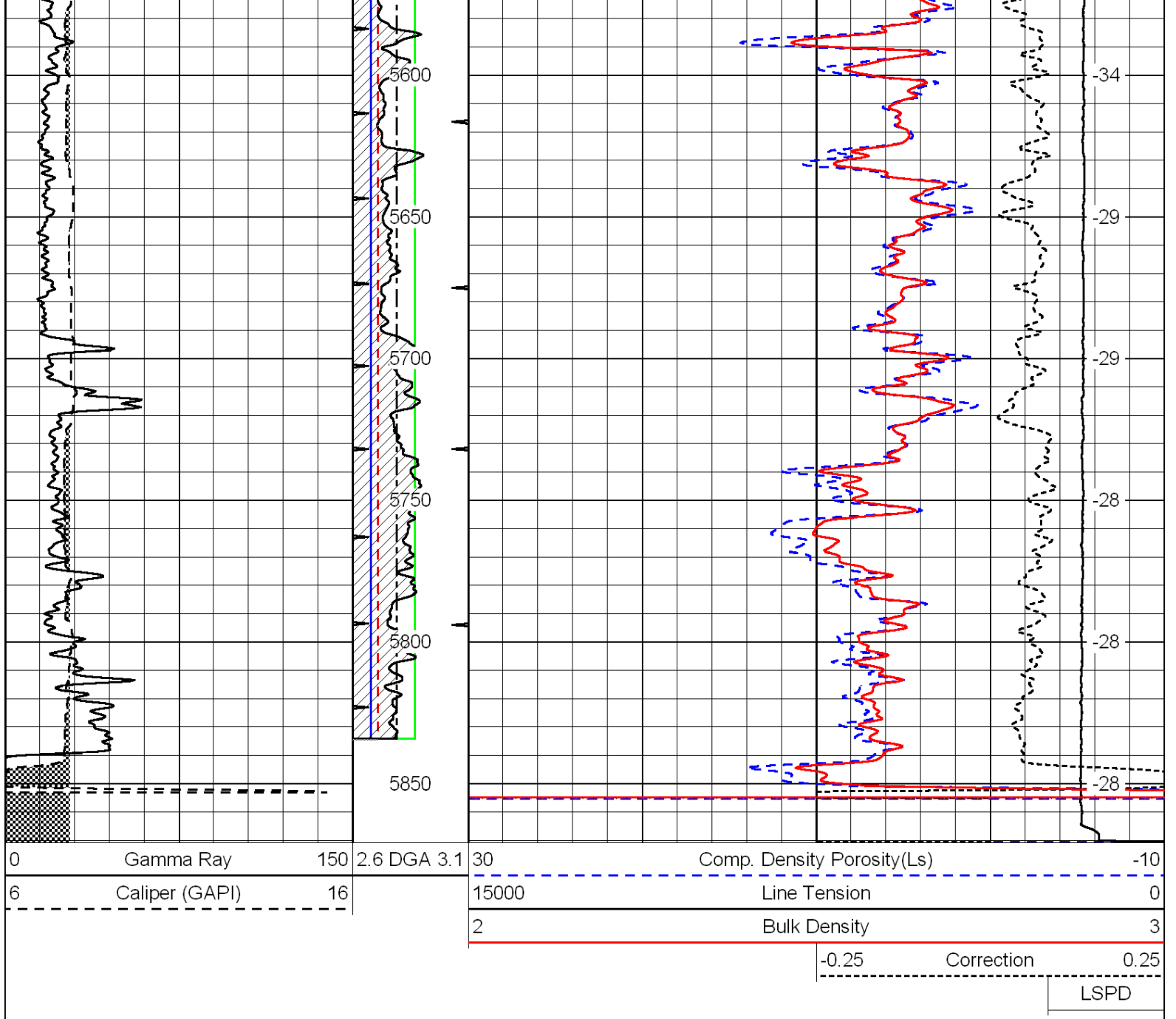
Bucklin, 2 West to 129 Rd, 12 1/2 South, East Into

0	Gamma Ray	150	2.6 DGA 3.1	30	Comp. Density Porosity(Ls)	-10	
6	Caliper (GAPI)	16		15000	Line Tension	0	
				2	Bulk Density	3	
					-0.25	Correction	0.25
							LSPD









Database File: c:\warrior\data\falcon\_fulton#3-11\falcon.db  
 Dataset Pathname: dil/flcnstck  
 Presentation Format: ducpdga  
 Dataset Creation: Wed Aug 25 15:11:31 2010  
 Charted by: Depth in Feet scaled 1:240

