



# Microresistivity Log

**DIGITAL LOG** (785) 625-3858

API No.	15-051-26,020-00-00		
Company	McCoy Petroleum Corporation		
Well	Massier 'A' No. 1-8		
Field	Wildcat		
County	Ellis	State	Kansas
Location	400' FNL & 880' FWL		
Sec: 8	Twp: 12 S	Rge: 19 W	
Permanent Datum	Ground Level	Elevation 2205	Other Services CNL/CDL DIL
Log Measured From	Kelly Bushing	11 Ft. Above Perm. Datum	
Drilling Measured From	Frotkelly Bushing		K.B. 2216 D.F. 2205 G.L. 2205

Date	8/15/2010
Run Number	Two
Depth Driller	3807
Depth Logger	3808
Bottom Logged Interval	3807
Top Log Interval	3200
Casing Driller	8.625 @ 227
Casing Logger	225
Bit Size	7.875
Type Fluid in Hole	Chemical
Salinity, ppm CL	3,000
Density / Viscosity	9.0 53
pH / Fluid Loss	10.0 7.2
Source of Sample	Flowline
Rm @ Meas. Temp	.55 @ 70
Rmf @ Meas. Temp	.41 @ 70
Rmc @ Meas. Temp	.74 @ 70
Source of Rmf / Rmc	Charts
Rm @ BHT	.33 @ 116
Operating Rig Time	4 1/2 Hours
Max Rec. Temp. F	116
Equipment Number	4
Location	Hays
Recorded By	K. Bange
Witnessed By	Robert Hendrix

<<< Fold Here >>>

All interpretations are opinions based on inferences from electrical or other measurements and we cannot and do not guarantee the accuracy or correctness of any interpretation, and we shall not, except in the case of gross or willful negligence on our part, be liable or responsible for any loss, costs, damages, or expenses incurred or sustained by anyone resulting from any interpretation made by any of our officers, agents or employees. These interpretations are also subject to our general terms and conditions set out in our current Price Schedule.

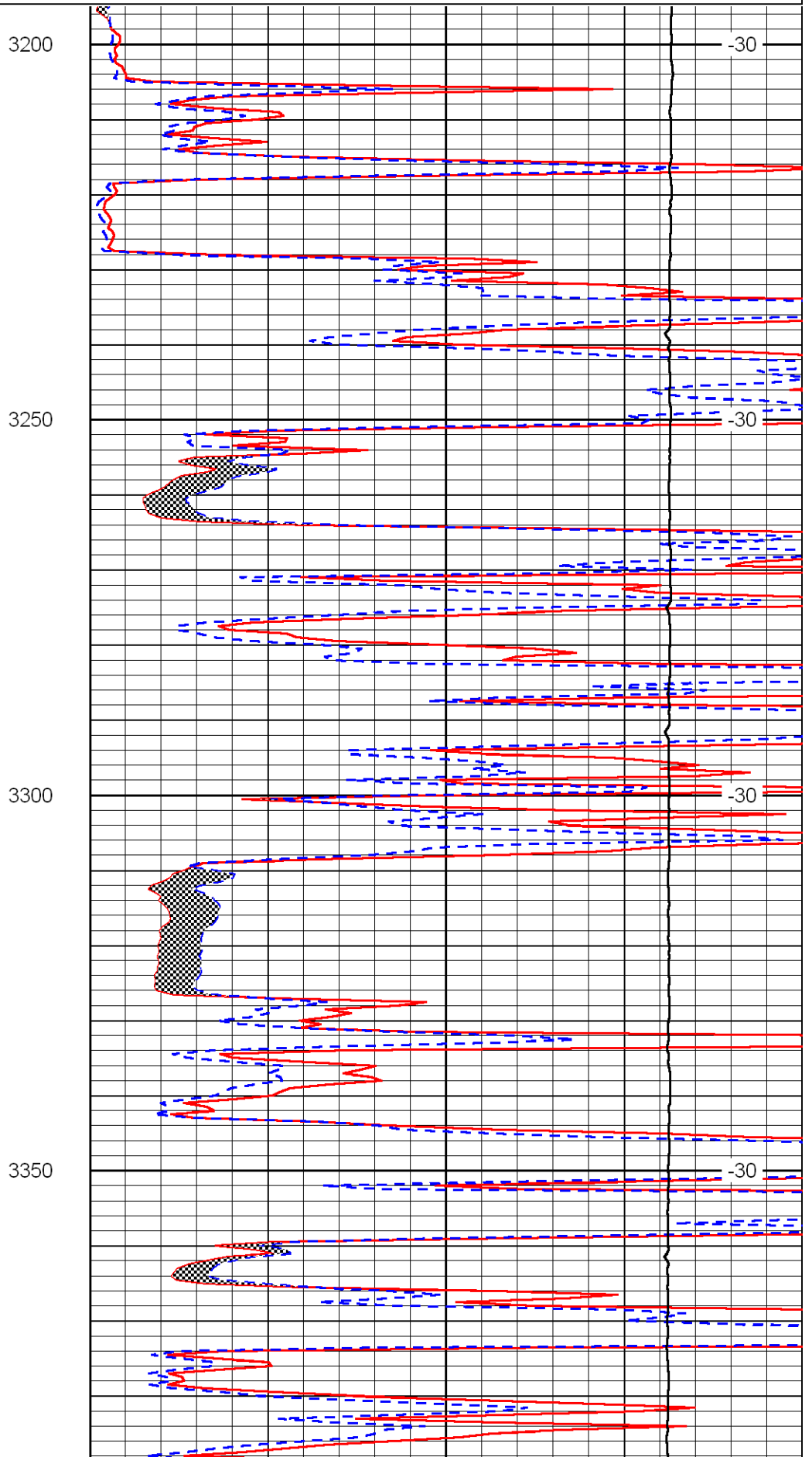
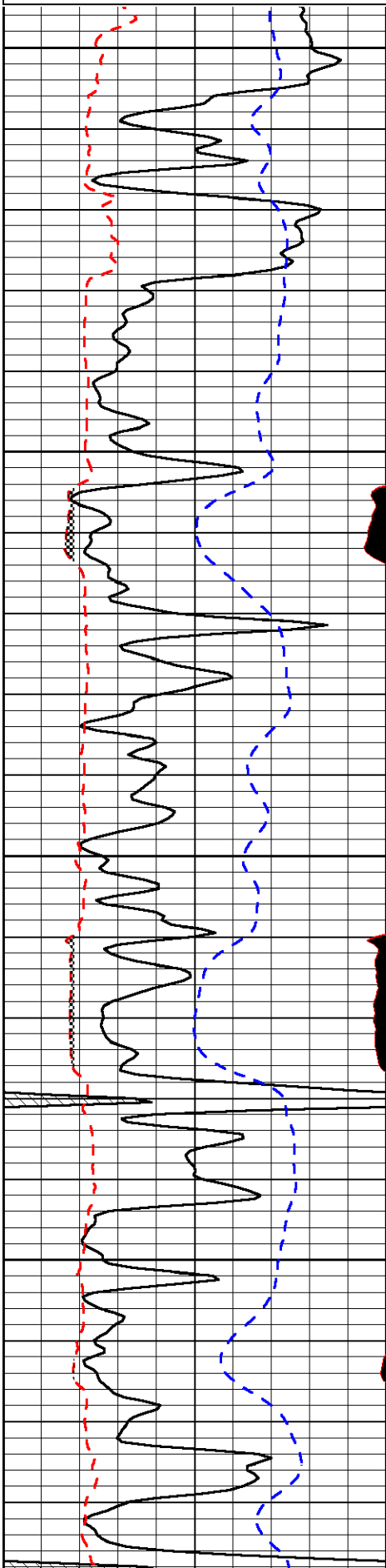
### Comments

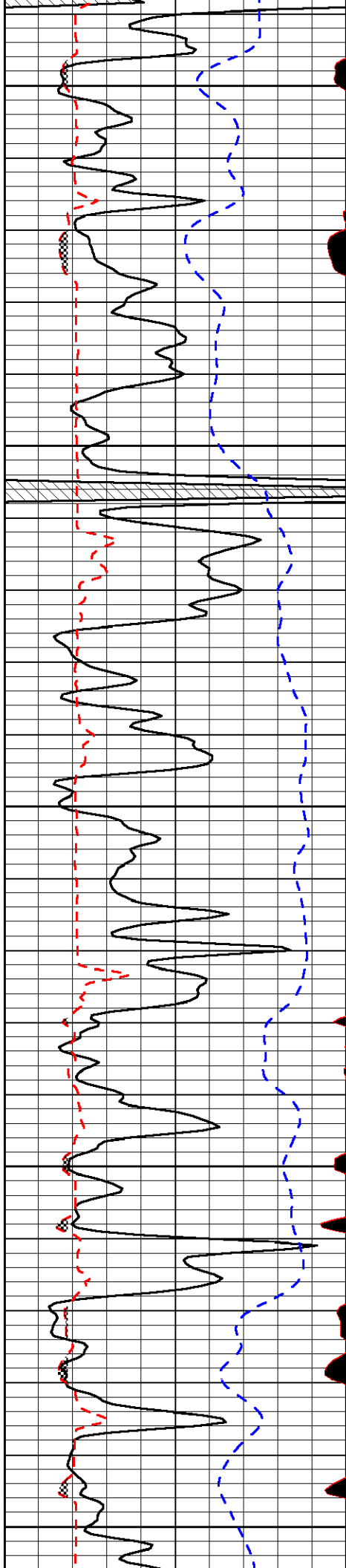
Thank you for using Log-Tech, Inc.  
 (785) 625-3858  
  
 Hays, No to Buckeye rd, 8 W, 2 N, E into

Database File:	mcoy081510hd.db
Dataset Pathname:	dil/mcoy2in
Presentation Format:	micro
Dataset Creation:	Sun Aug 15 06:33:39 2010
Charted by:	Depth in Feet scaled 1:240

0	Gamma Ray	150
6	MCAL (GAPI)	16
2.875	Mud Cake (GAPI)	7.875
-200	SP	0

0	Micro Inverse 1 X 1	40
0	Micro Normal 2"	40
10000	Line Weight	0
		LSPD





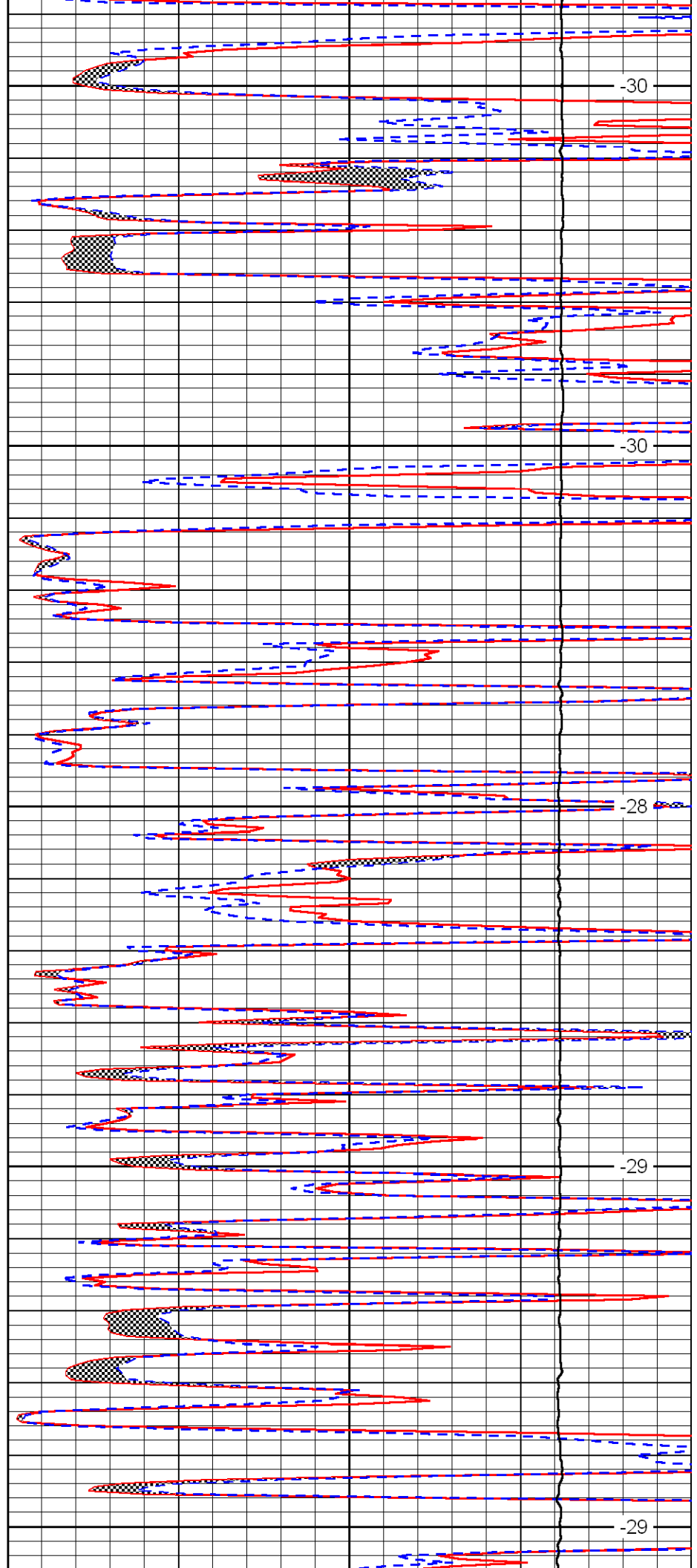
3400

3450

3500

3550

3600



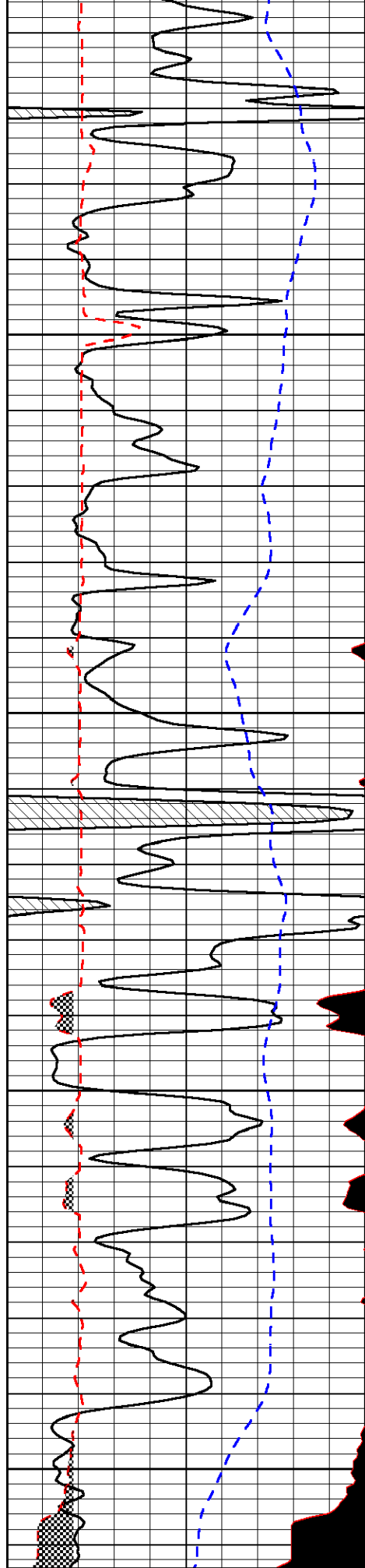
-30

-30

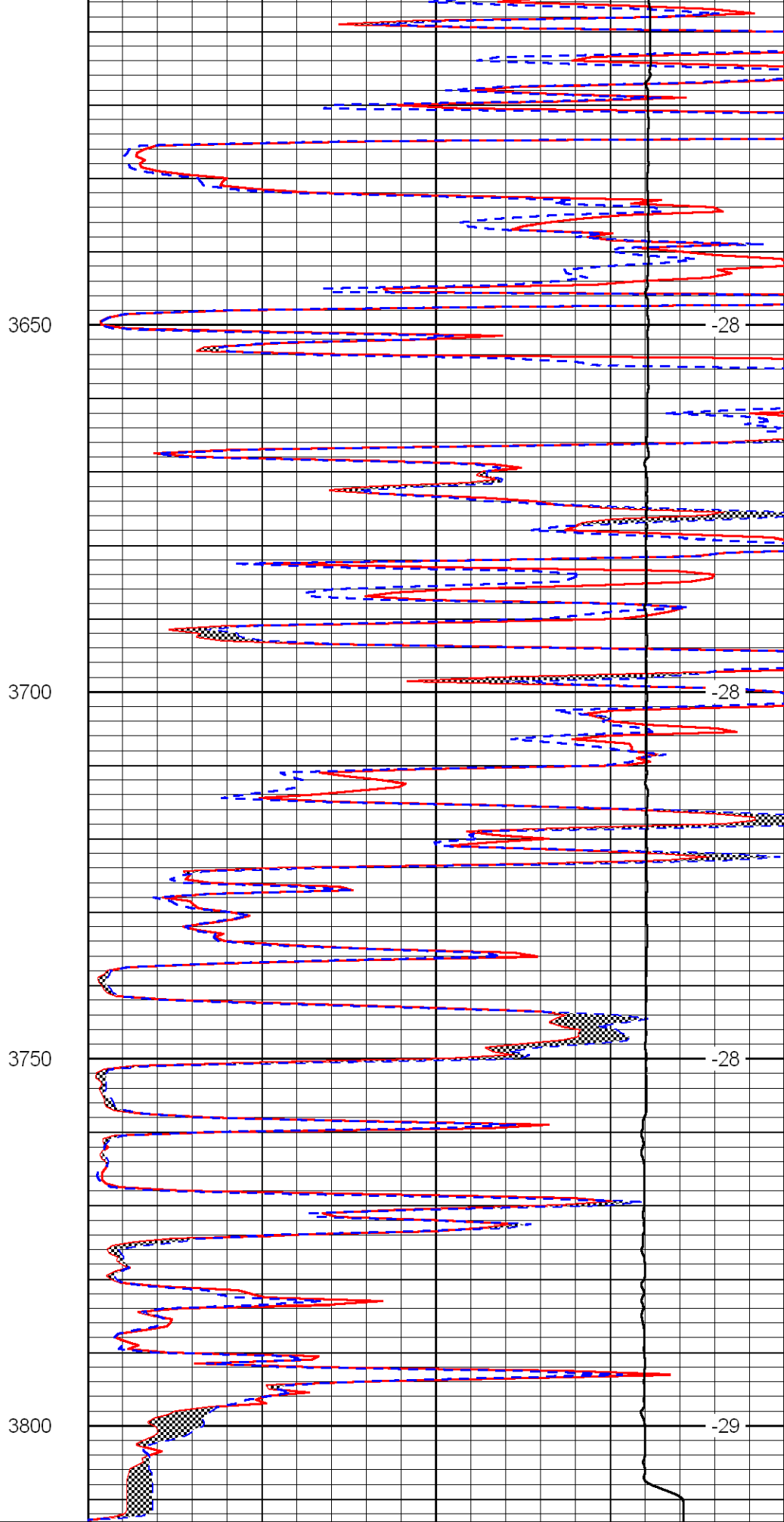
-28

-29

-29



0 Gamma Ray 150  
 6 MCAL (GAPI) 16



0 Micro Inverse 1 X 1 40  
 0 Micro Normal 2'' 40

2.875	Mud Cake (GAPI)	7.875
-200	SP	0

10000	Line Weight	0
		LSPD