



Dual Induction Log

DIGITAL LOG (785) 625-3858

API No.	15-051-26,020-00-00		
Company	McCoy Petroleum Corporation		
Well	Massier 'A' No. 1-8		
Field	Wildcat		
County	Ellis	State	Kansas
Location	400' FNL & 880' FWL		
Sec: 8	Twp: 12 S	Rge: 19 W	Elevation CNL/CDL MEL
Permanent Datum	Ground Level	Elevation 2205	K.B. 2216
Log Measured From	Kelly Bushing	11 Ft. Above Perm. Datum	D.F. 2205
Drilling Measured From	Kelly Bushing		G.L. 2205

Date	8/15/2010
Run Number	One
Depth Driller	3807
Depth Logger	3808
Bottom Logged Interval	3807
Top Log Interval	0
Casing Driller	8.625 @ 227
Casing Logger	225
Bit Size	7.875
Type Fluid in Hole	Chemical
Salinity, ppm CL	3,000
Density / Viscosity	9.0 53
pH / Fluid Loss	10.0 7.2
Source of Sample	Flowline
Rm @ Meas. Temp	.55 @ 70
Rmf @ Meas. Temp	.41 @ 70
Rmc @ Meas. Temp	.74 @ 70
Source of Rmf / Rmc	Charts
Rm @ BHT	.33 @ 116
Operating Rig Time	4 1/2 Hours
Max Rec. Temp. F	116
Equipment Number	4
Location	Hays
Recorded By	K. Bange
Witnessed By	Robert Hendrix

<<< Fold Here >>>

All interpretations are opinions based on inferences from electrical or other measurements and we cannot and do not guarantee the accuracy or correctness of any interpretation, and we shall not, except in the case of gross or willful negligence on our part, be liable or responsible for any loss, costs, damages, or expenses incurred or sustained by anyone resulting from any interpretation made by any of our officers, agents or employees. These interpretations are also subject to our general terms and conditions set out in our current Price Schedule.

Comments

Thank you for using Log-Tech, Inc.
 (785) 625-3858

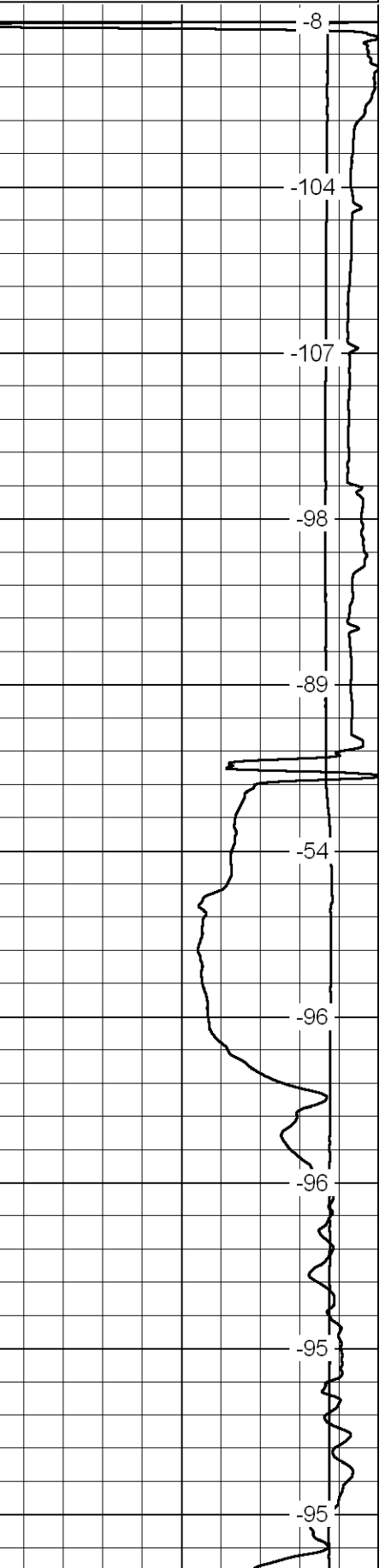
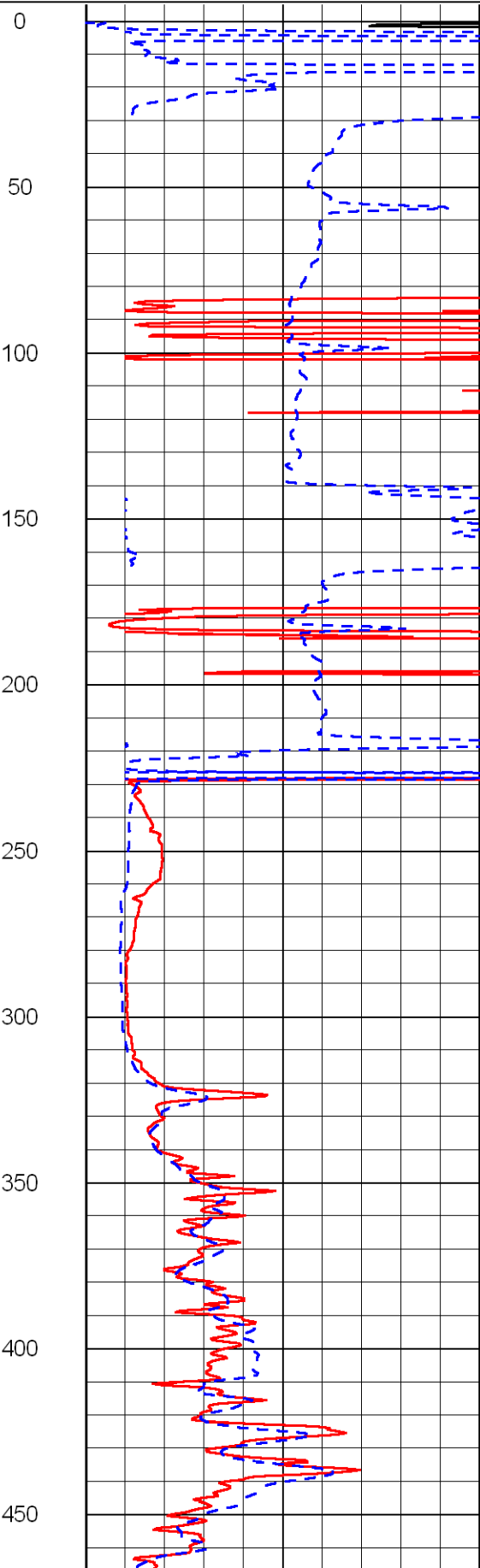
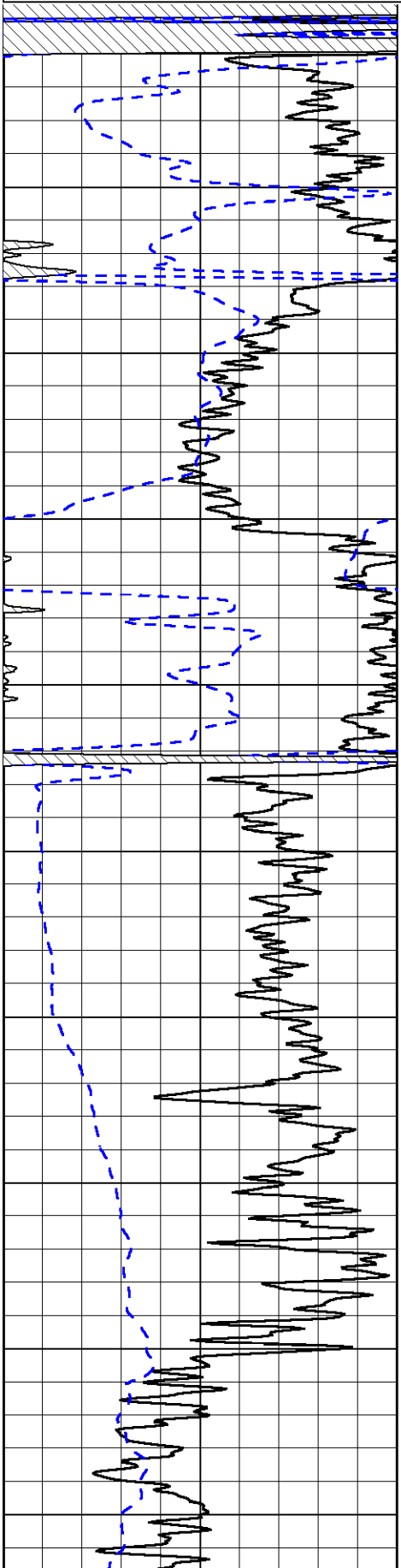
Hays, No to Buckeye rd, 8 W, 2 N, E into

Database File: mcoy081510hd.db
 Dataset Pathname: dil/mcoy2in
 Presentation Format: dil2in
 Dataset Creation: Sun Aug 15 06:33:39 2010
 Charted by: Depth in Feet scaled 1:600

0	Gamma Ray	150
-200	SP	0

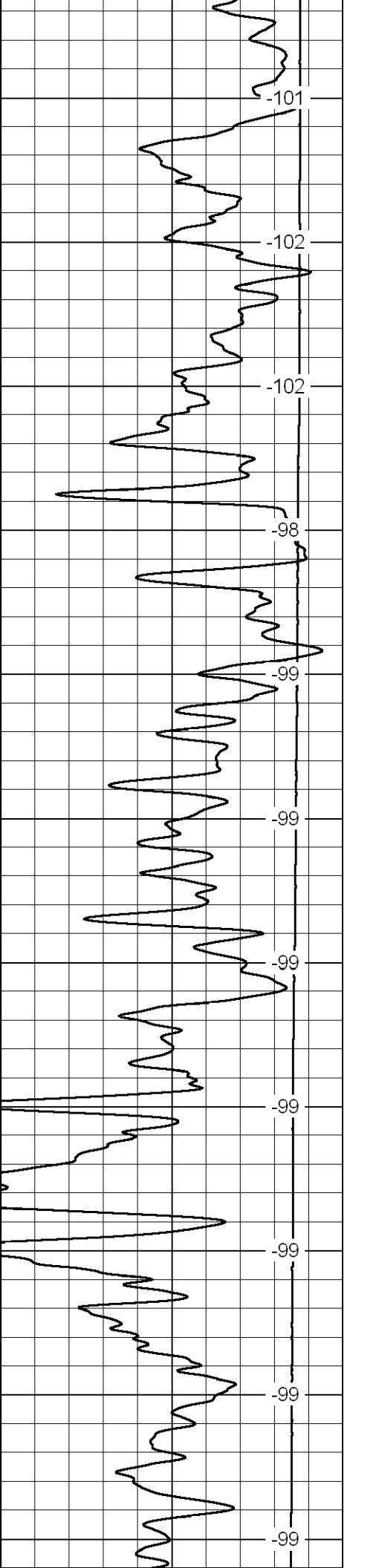
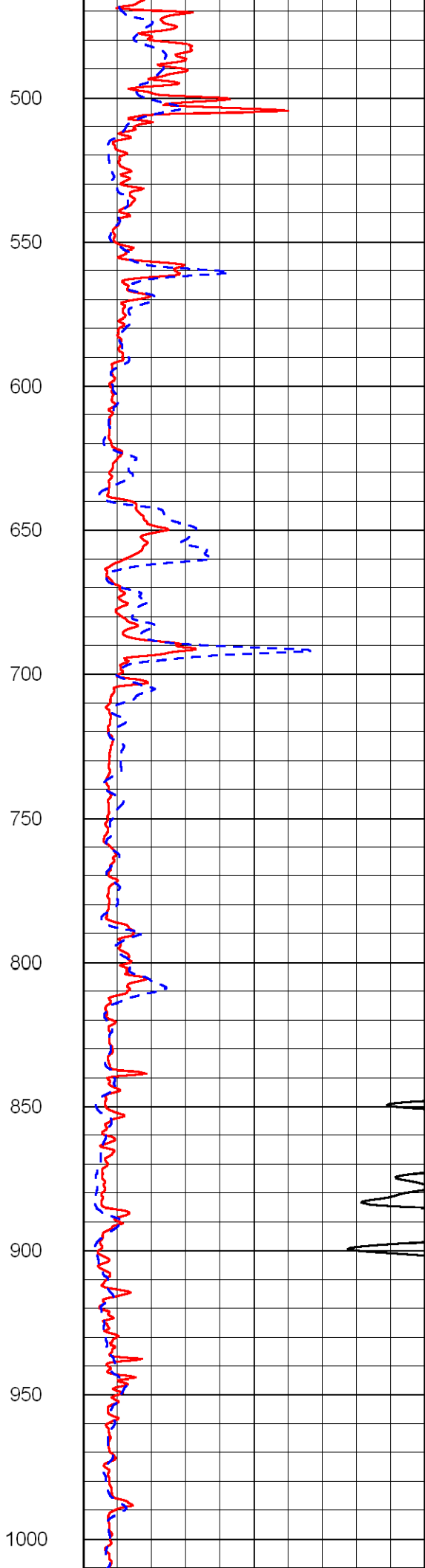
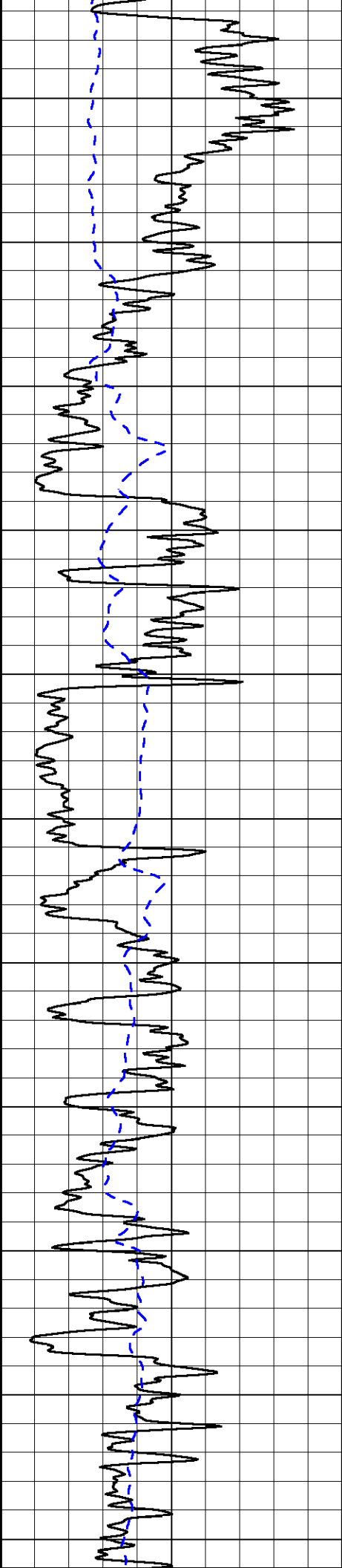
0	Shallow Resistivity	50
0	Deep Resistivity	50
1000	Conductivity	0
15000	Line Tension	0

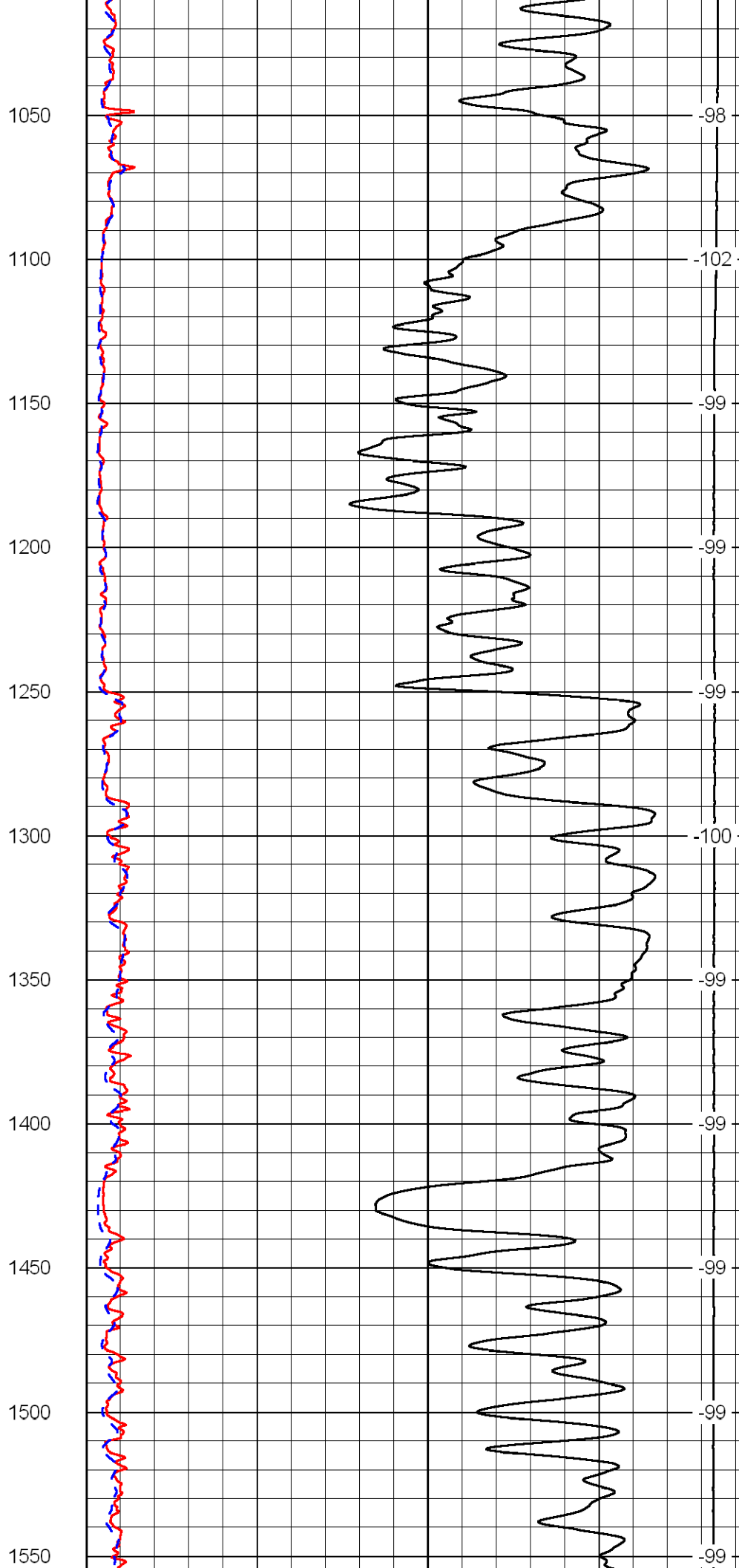
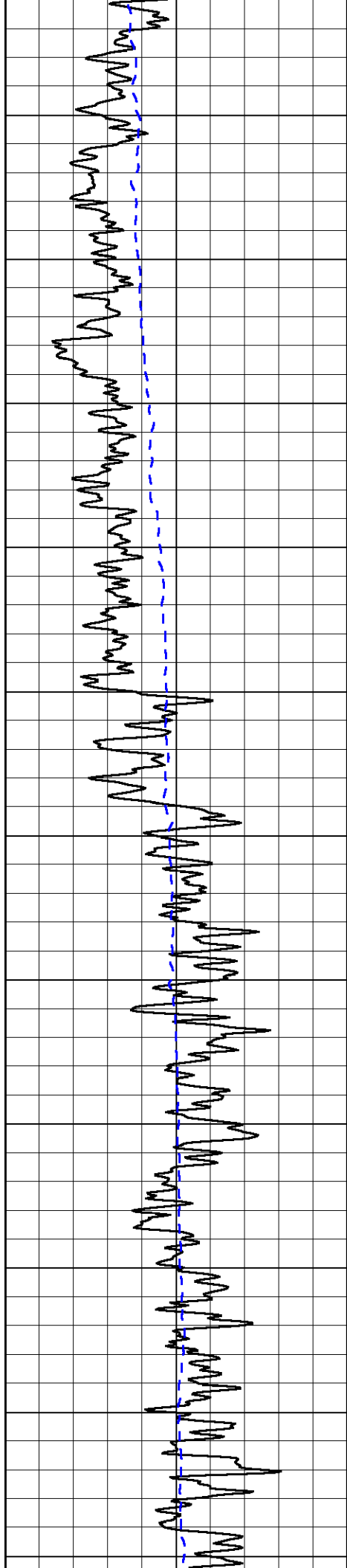
LSPD	0
------	---

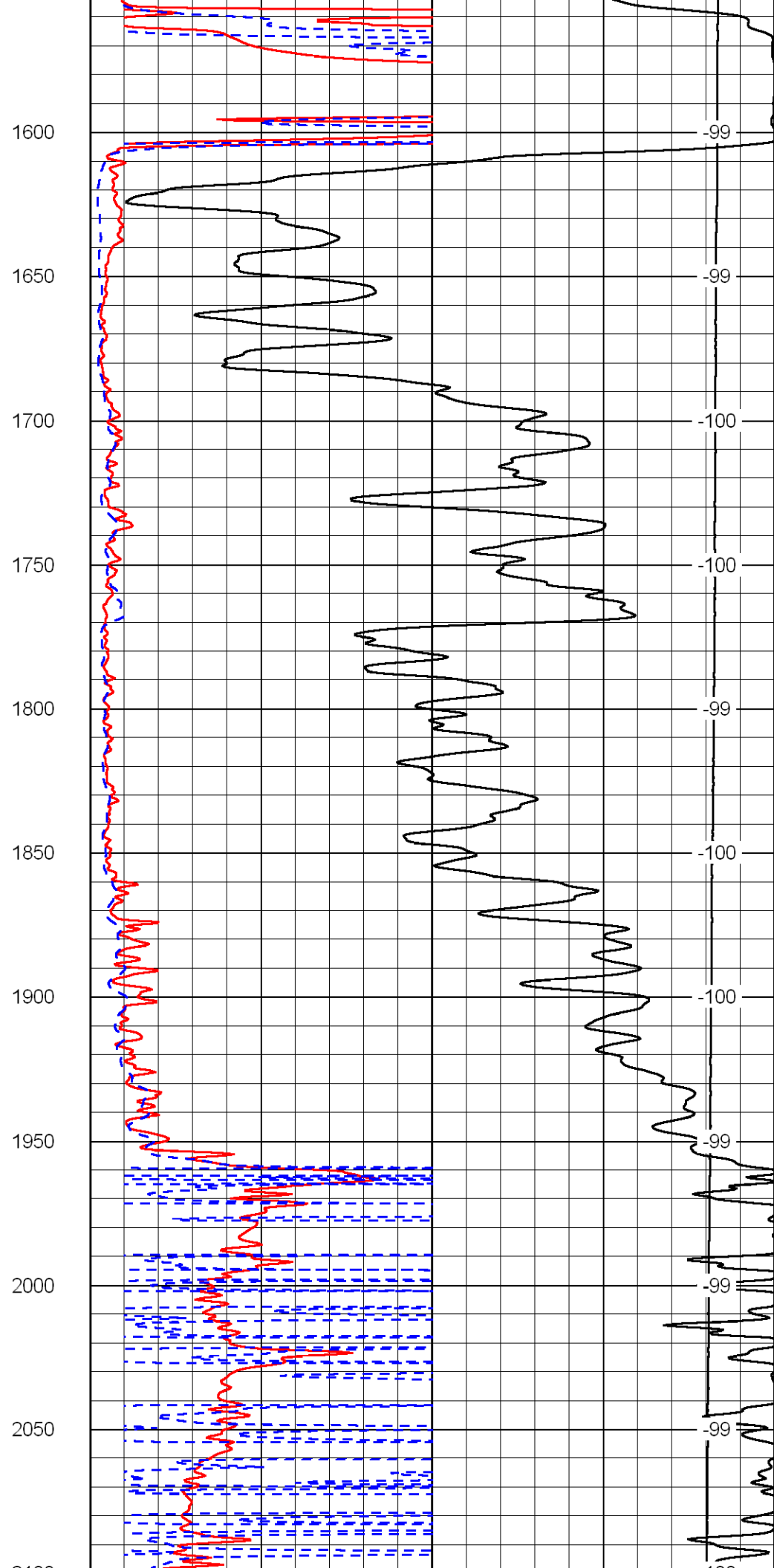
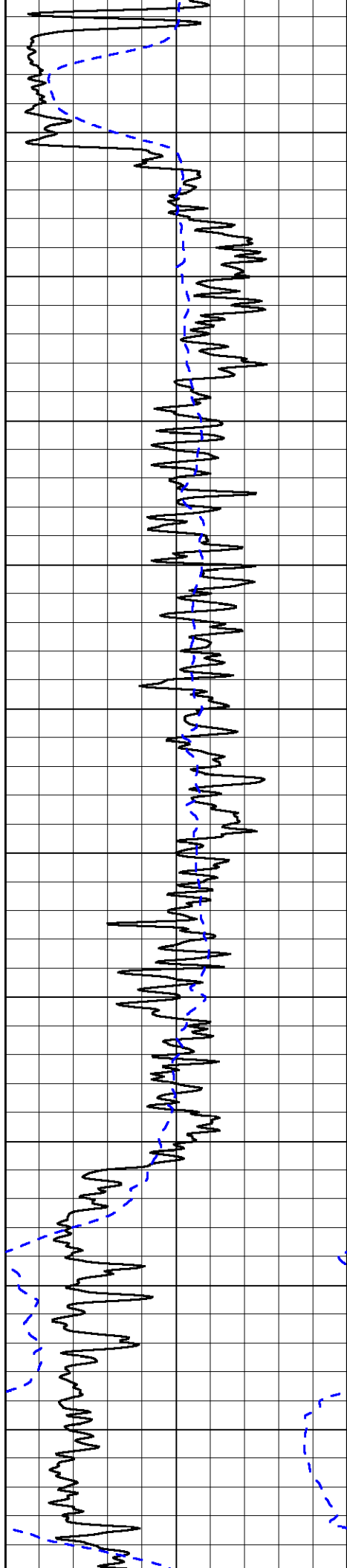


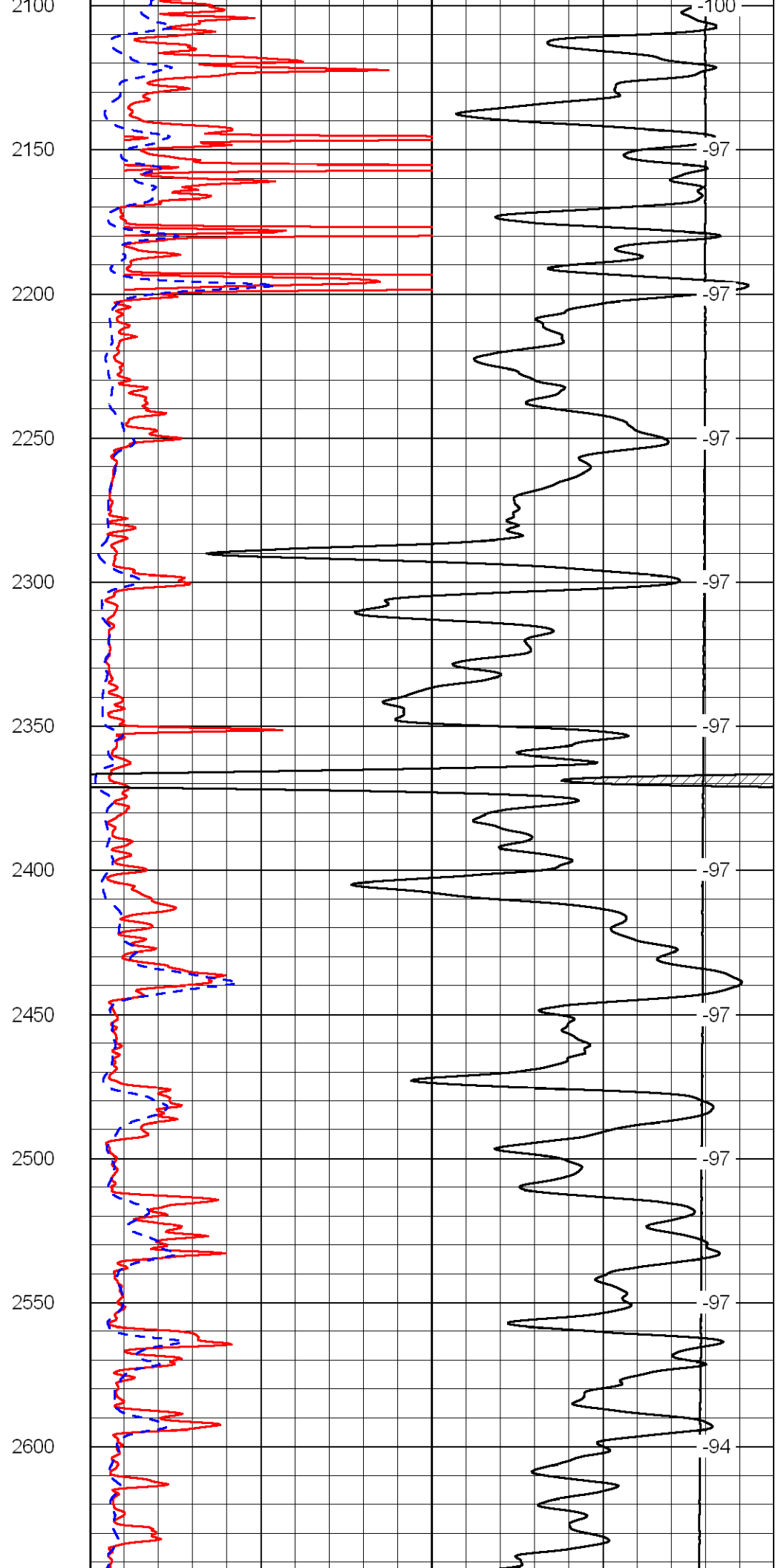
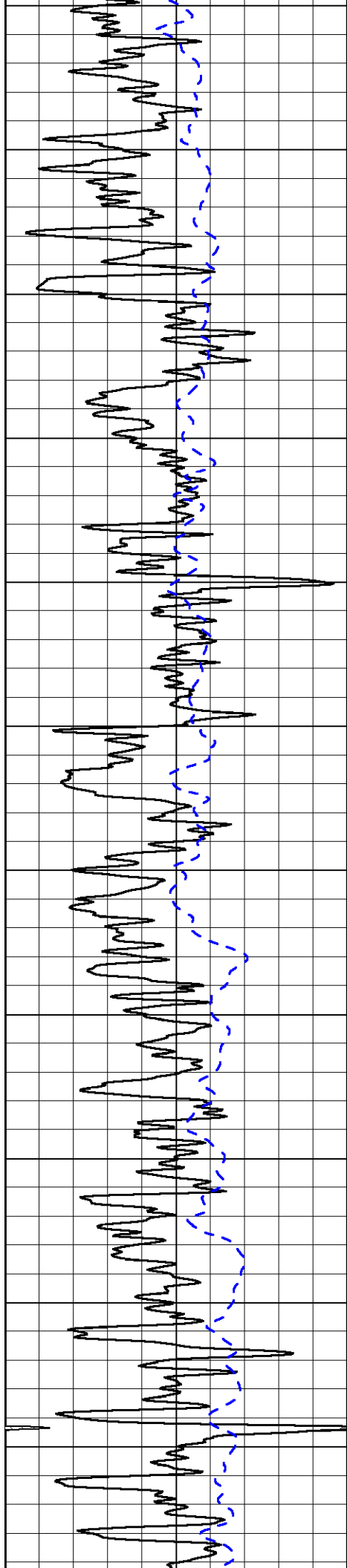
0
50
100
150
200
250
300
350
400
450

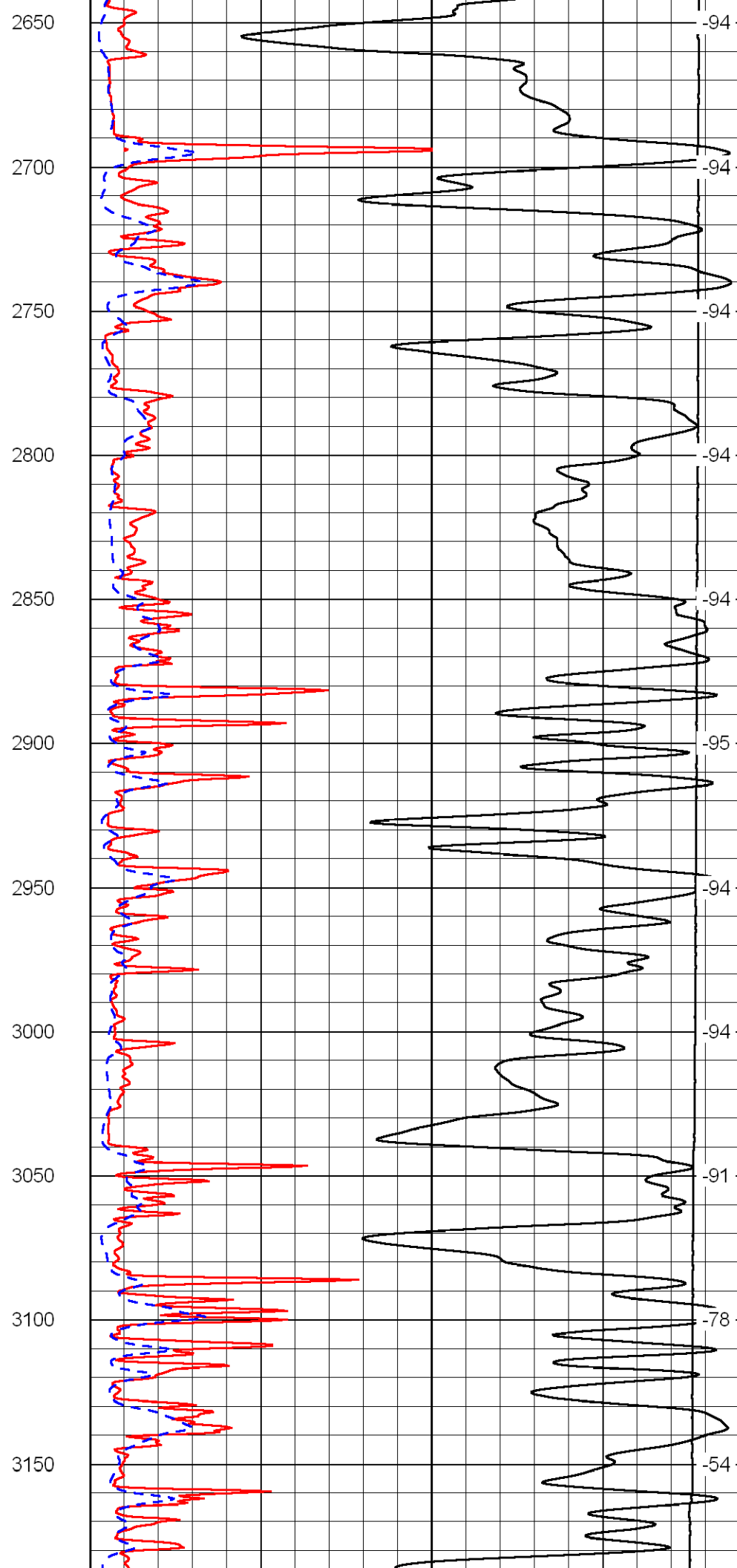
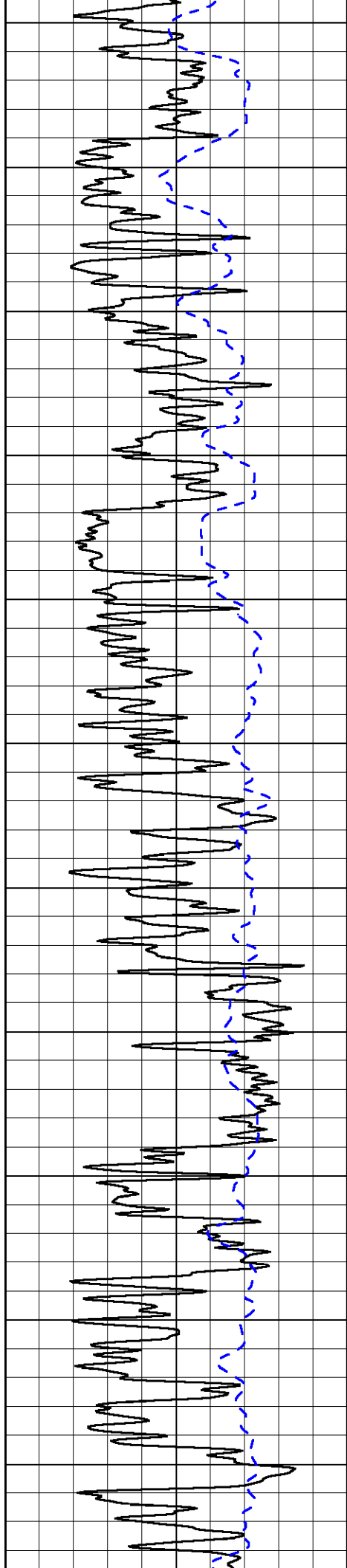
-8
-104
-107
-98
-89
-54
-96
-96
-95
-95

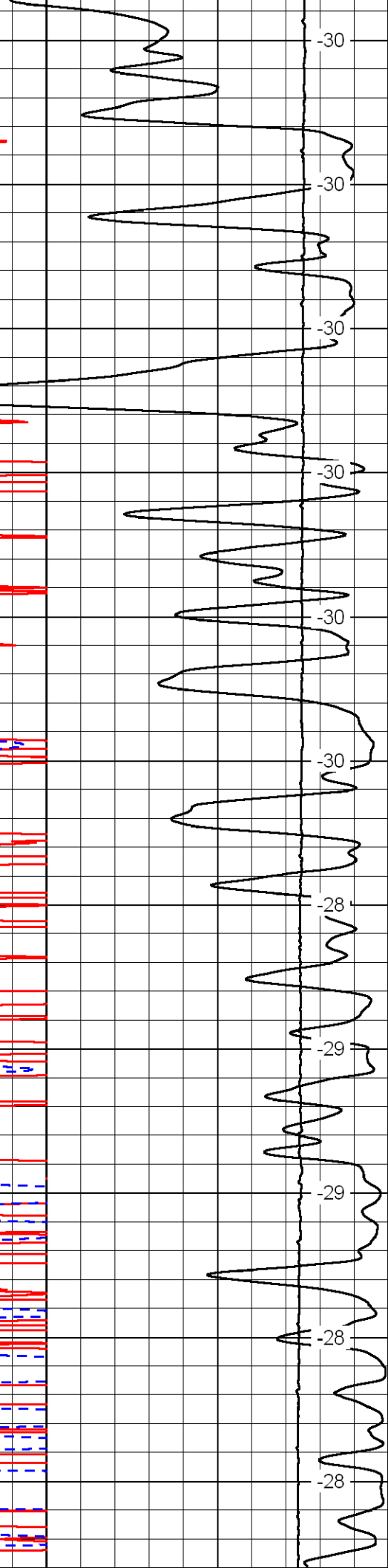
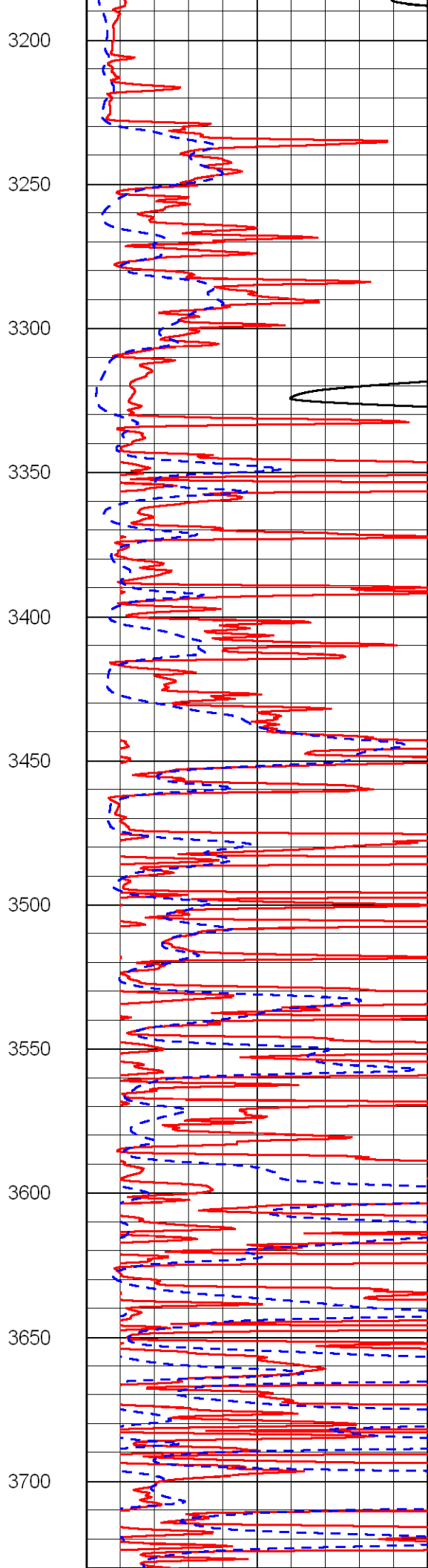
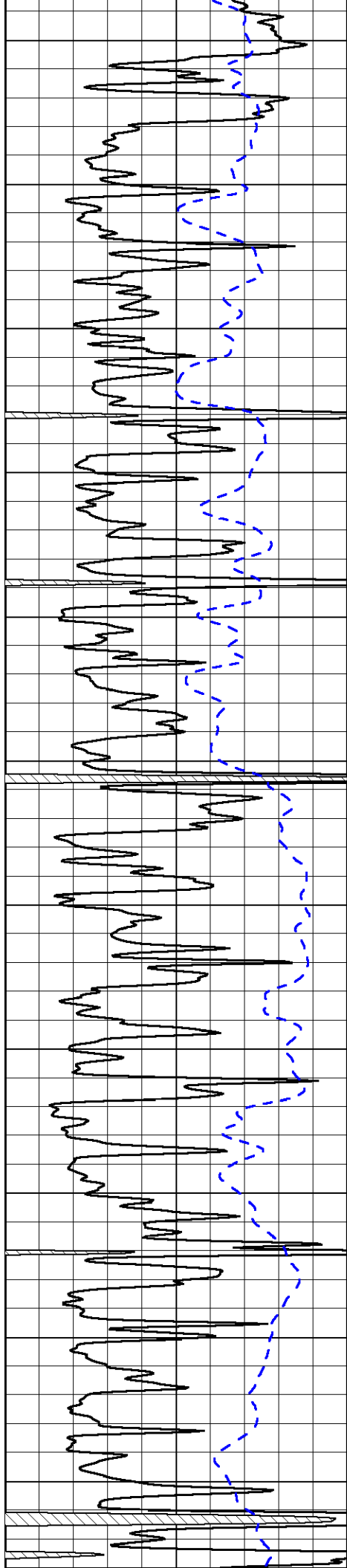


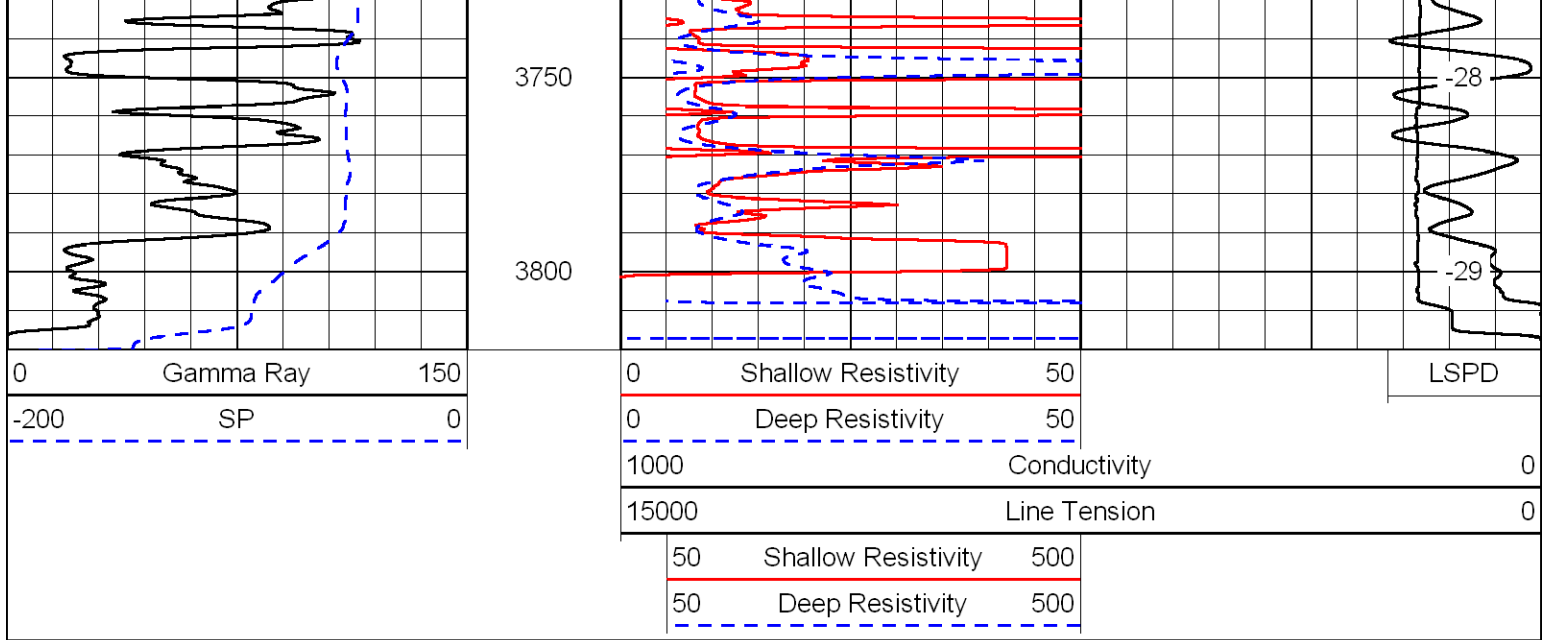




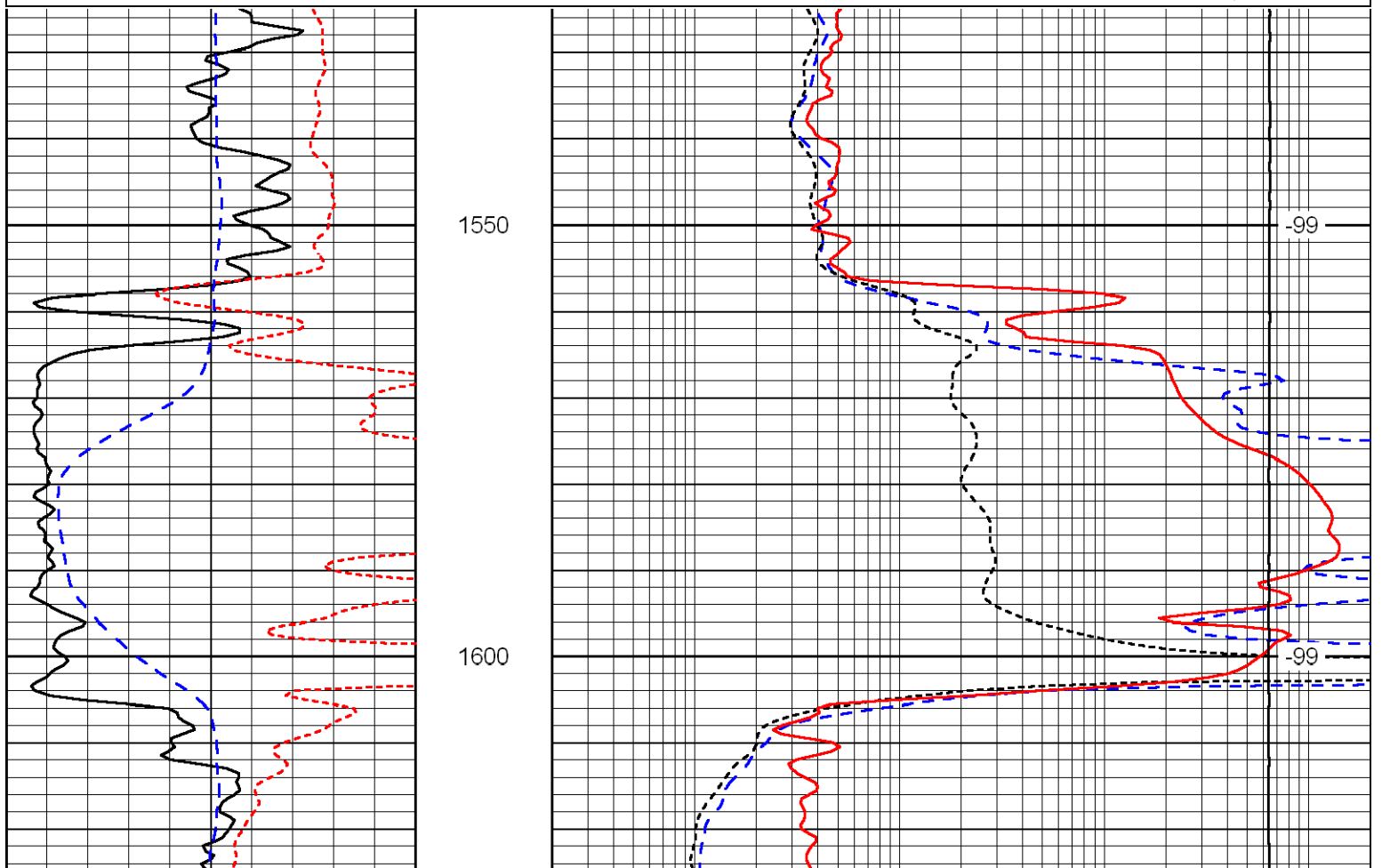
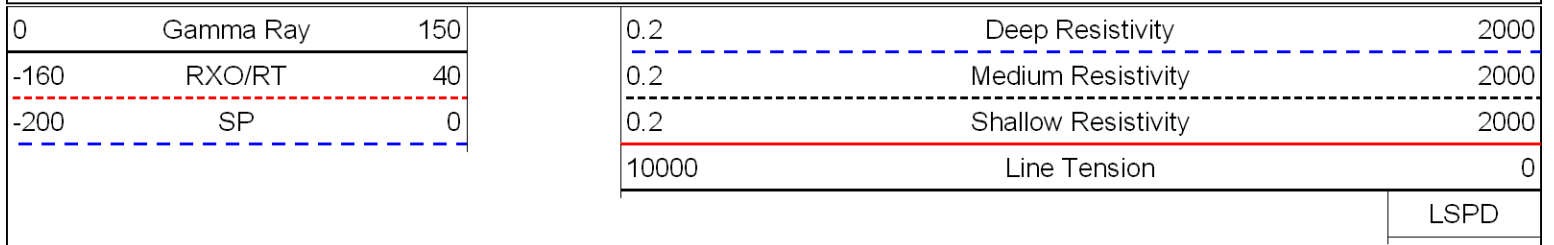








Database File: mcoy081510hd.db
 Dataset Pathname: dil/mcoy2in
 Presentation Format: dil
 Dataset Creation: Sun Aug 15 06:33:39 2010
 Charted by: Depth in Feet scaled 1:240



0	Gamma Ray	150
-160	RXO/RT	40
-200	SP	0

0.2	Deep Resistivity	2000
0.2	Medium Resistivity	2000
0.2	Shallow Resistivity	2000
10000	Line Tension	0

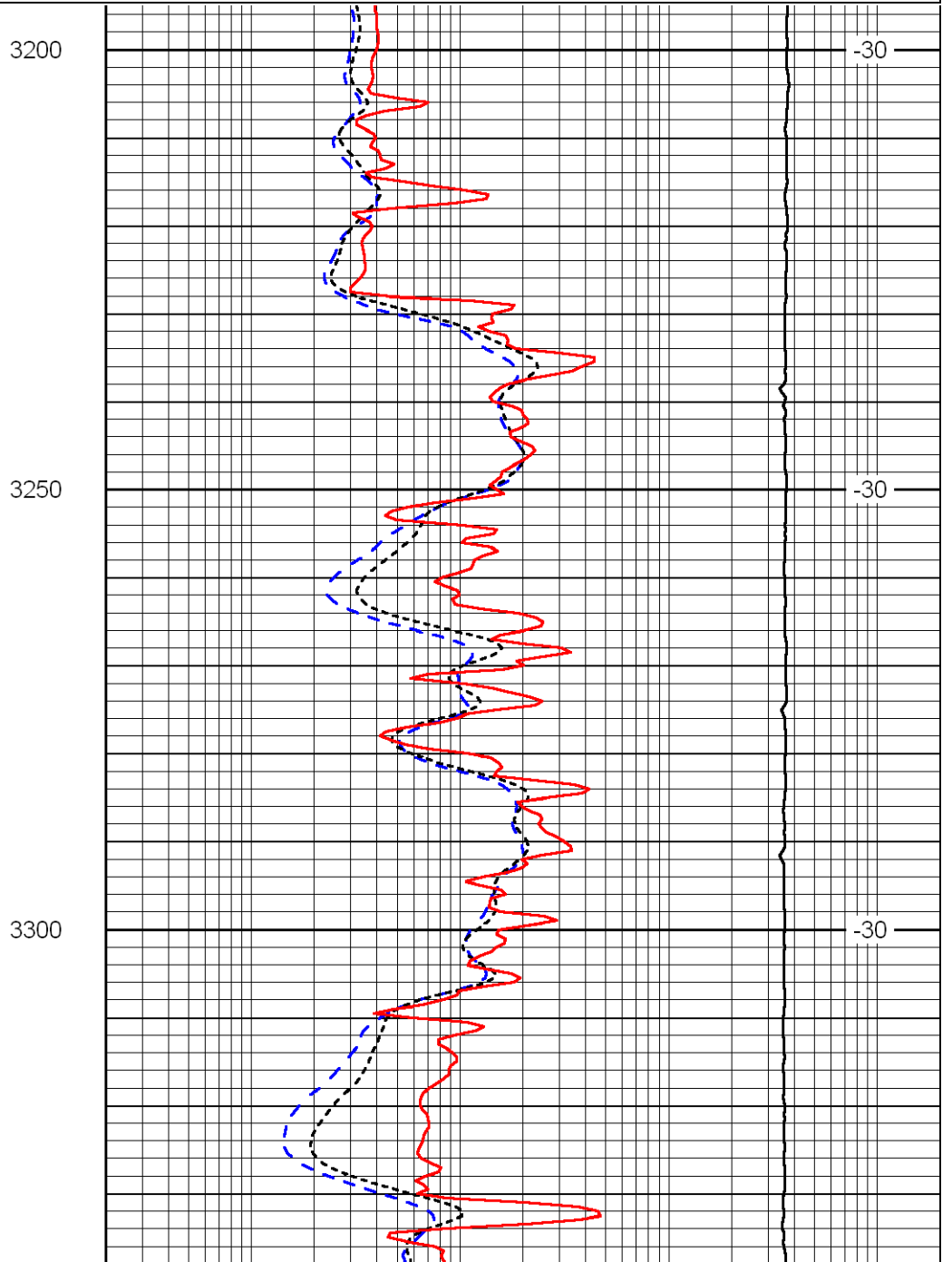
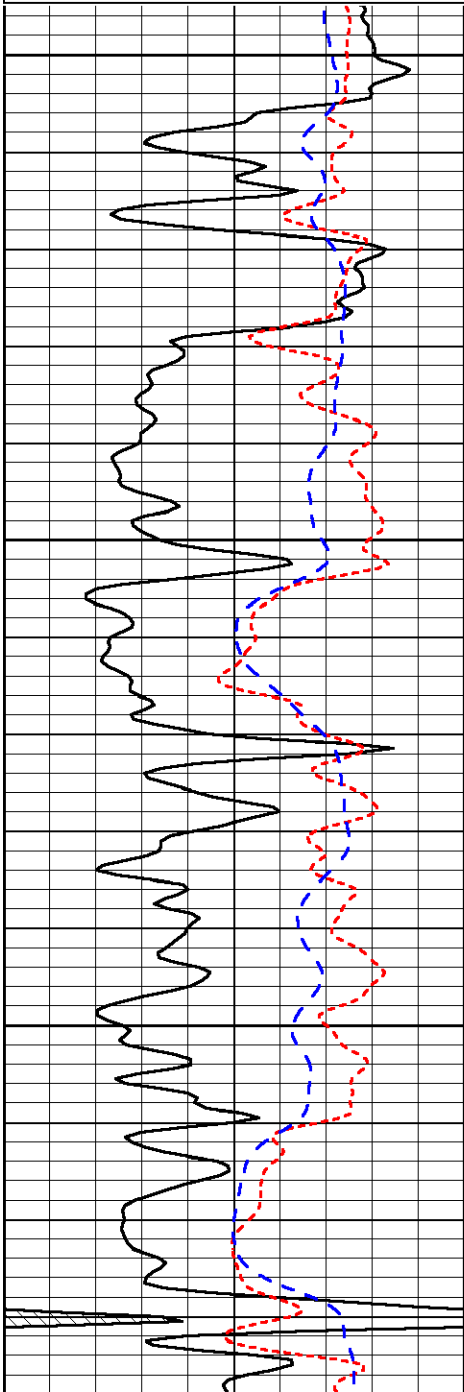
LSPD

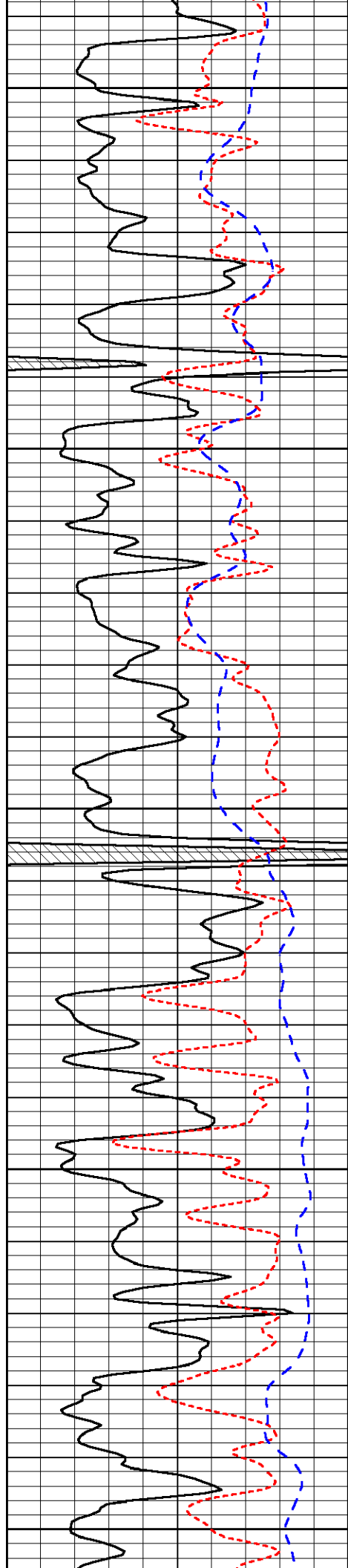
Database File: mcoy081510hd.db
 Dataset Pathname: dil/mcoy2in
 Presentation Format: dil
 Dataset Creation: Sun Aug 15 06:33:39 2010
 Charted by: Depth in Feet scaled 1:240

0	Gamma Ray	150
-160	RXO/RT	40
-200	SP	0

0.2	Deep Resistivity	2000
0.2	Medium Resistivity	2000
0.2	Shallow Resistivity	2000
10000	Line Tension	0

LSPD





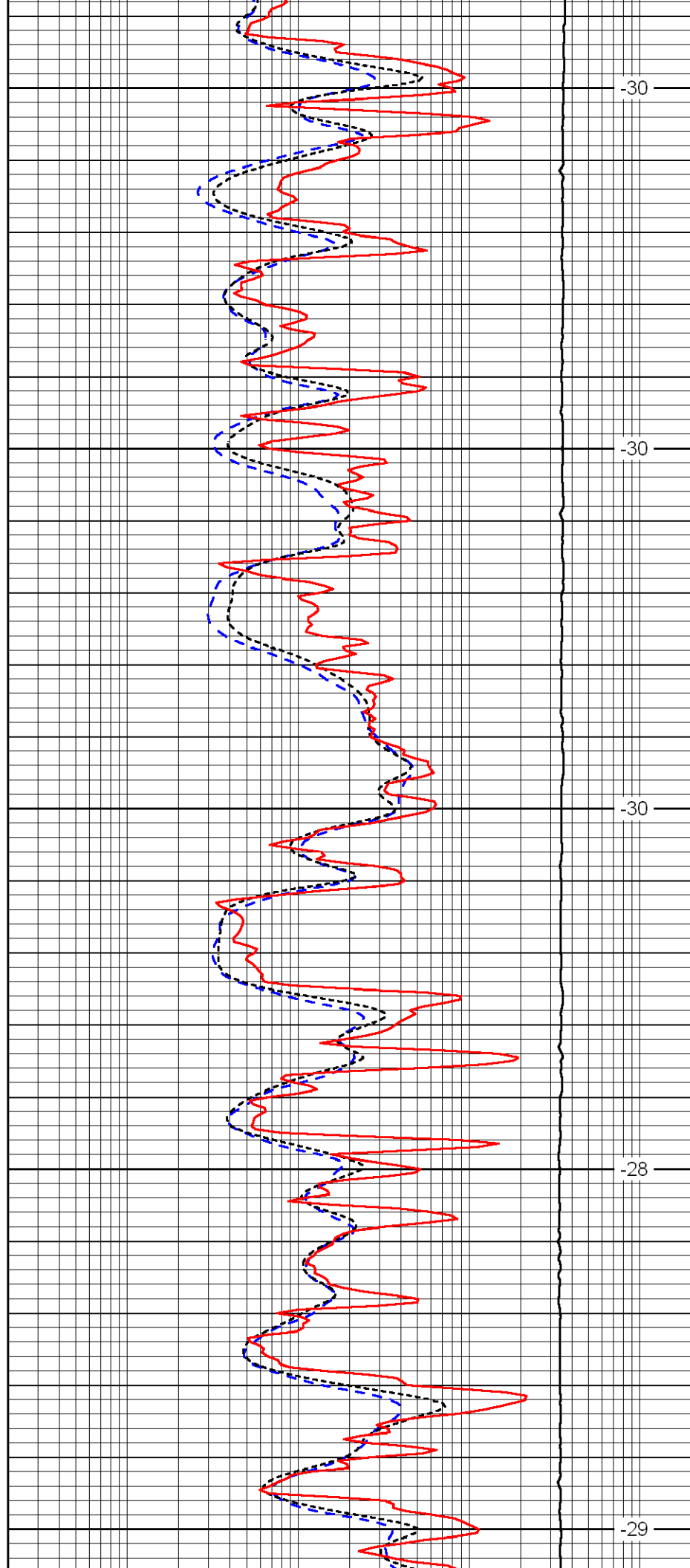
3350

3400

3450

3500

3550



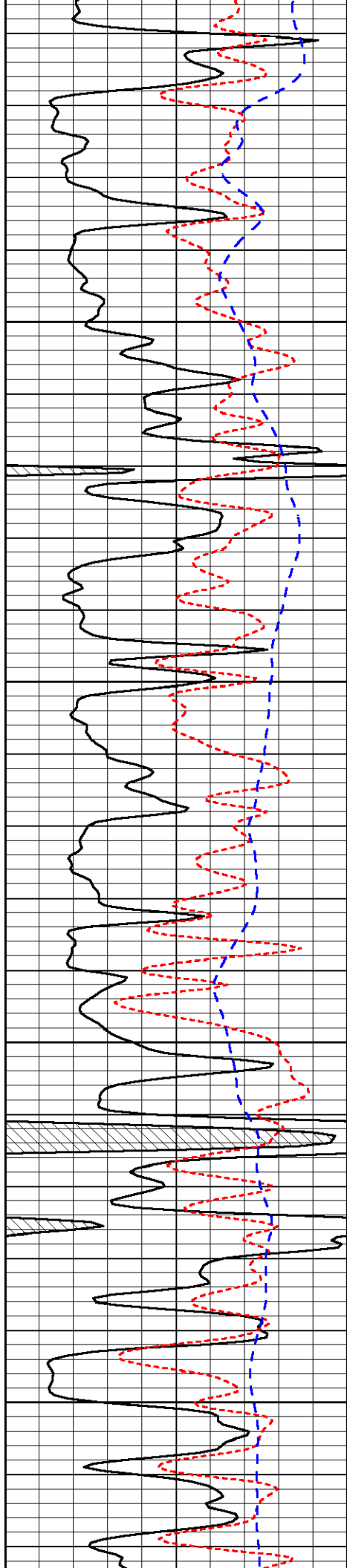
-30

-30

-30

-28

-29

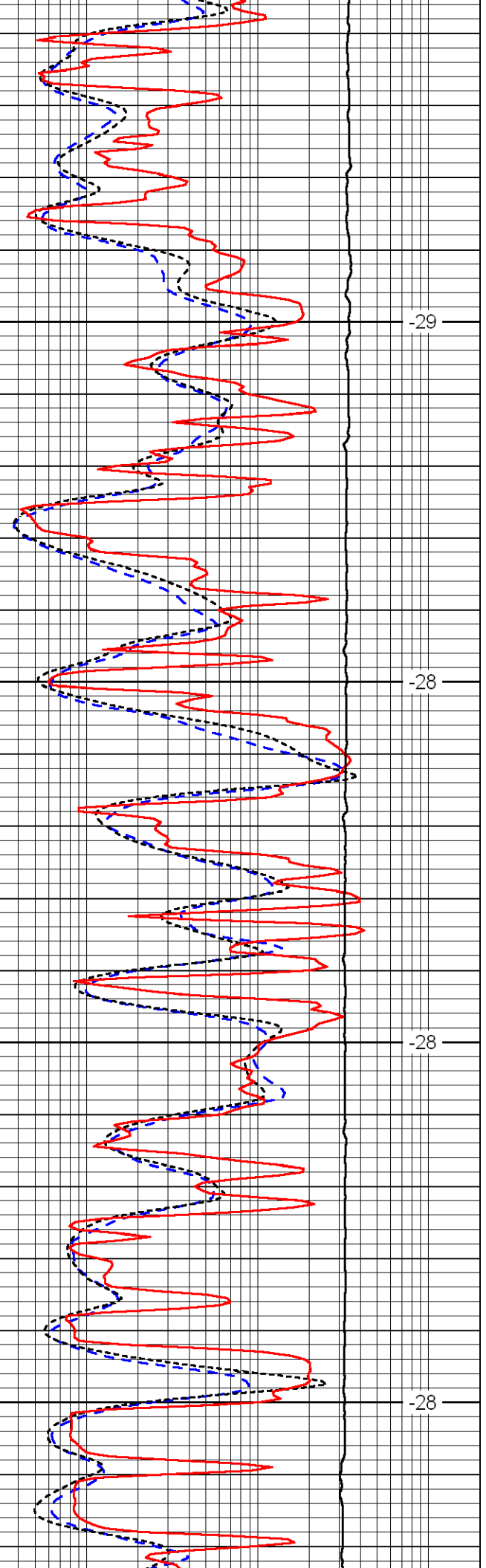


3600

3650

3700

3750

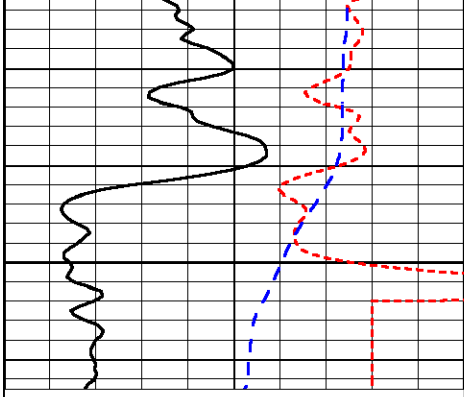


-29

-28

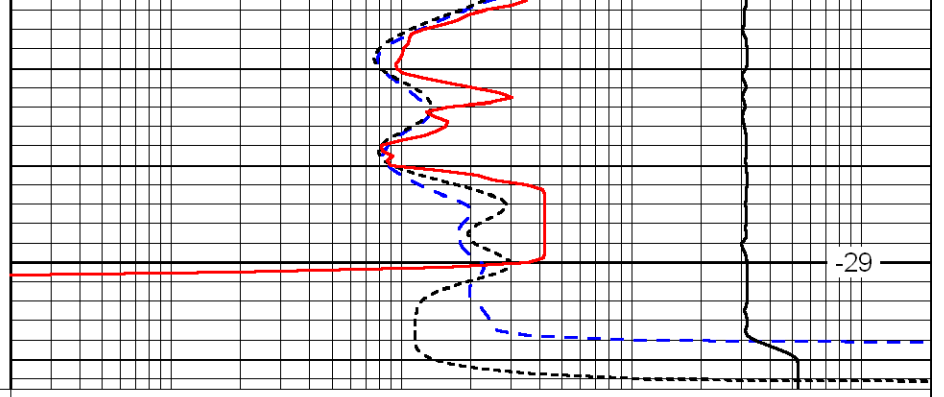
-28

-28



0	Gamma Ray	150
-160	RXO/RT	40
-200	SP	0

3800



0.2	Deep Resistivity	2000
0.2	Medium Resistivity	2000
0.2	Shallow Resistivity	2000
10000	Line Tension	0

-29

LSPD