



**Borehole Compensated  
Sonic Log**

**DIGITAL LOG (785) 625-3858**

API No. 15-101-22253-00-00	Company <b>Murfin Drilling Company, Inc.</b>	Location <b>2293' FNL &amp; 2310' FEL</b>	Other Services CNL / CDL MEL / DIL
Well <b>Sharp No. 1-3</b>	County <b>Lane</b>		
Field <b>Wildcat</b>	Lane <b>Lane</b>	State <b>Kansas</b>	Elevation K.B. 2874 D.F. 2864 G.L. 2864
Sec: <b>3</b>	Twp: <b>18S</b>		
Permanant Datum Log Measured From Drilling Measured From	Ground Level Kelly Bushing Kelly Bushing	Elevation 2864 10 Ft. Above Perm. Datum	

Date	8/14/2010
Run Number	Two
Type Log	BHC Sonic
Depth Driller	4675
Depth Logger	4673
Bottom Logged Interval	4662
Top Logged Interval	200
Type Fluid In Hole	Chemical
Salinity, PPM CL	2400
Density	9.3
Level	Full
Max. Rec. Temp. F	125
Operating Rig Time	4 Hours
Equipment -- Location	17 Hays
Recorded By	R. Barnhart
Witnessed By	Ken LeBlanc

Borehole Record				Casing Record			
Run No	Bit	From	To	Size	Wgt.	From	To
One	12.25	00	231	8.625	23#	00	231
Two	7.875	231	TD				

<<< Fold Here >>>

All interpretations are opinions based on inferences from electrical or other measurements and we cannot and do not guarantee the accuracy or correctness of any interpretation, and we shall not, except in the case of gross or willful negligence on our part, be liable or responsible for any loss, costs, damages, or expenses incurred or sustained by anyone resulting from any interpretation made by any of our officers, agents or employees. These interpretations are also subject to our general terms and conditions set out in our current Price Schedule.

**Comments**

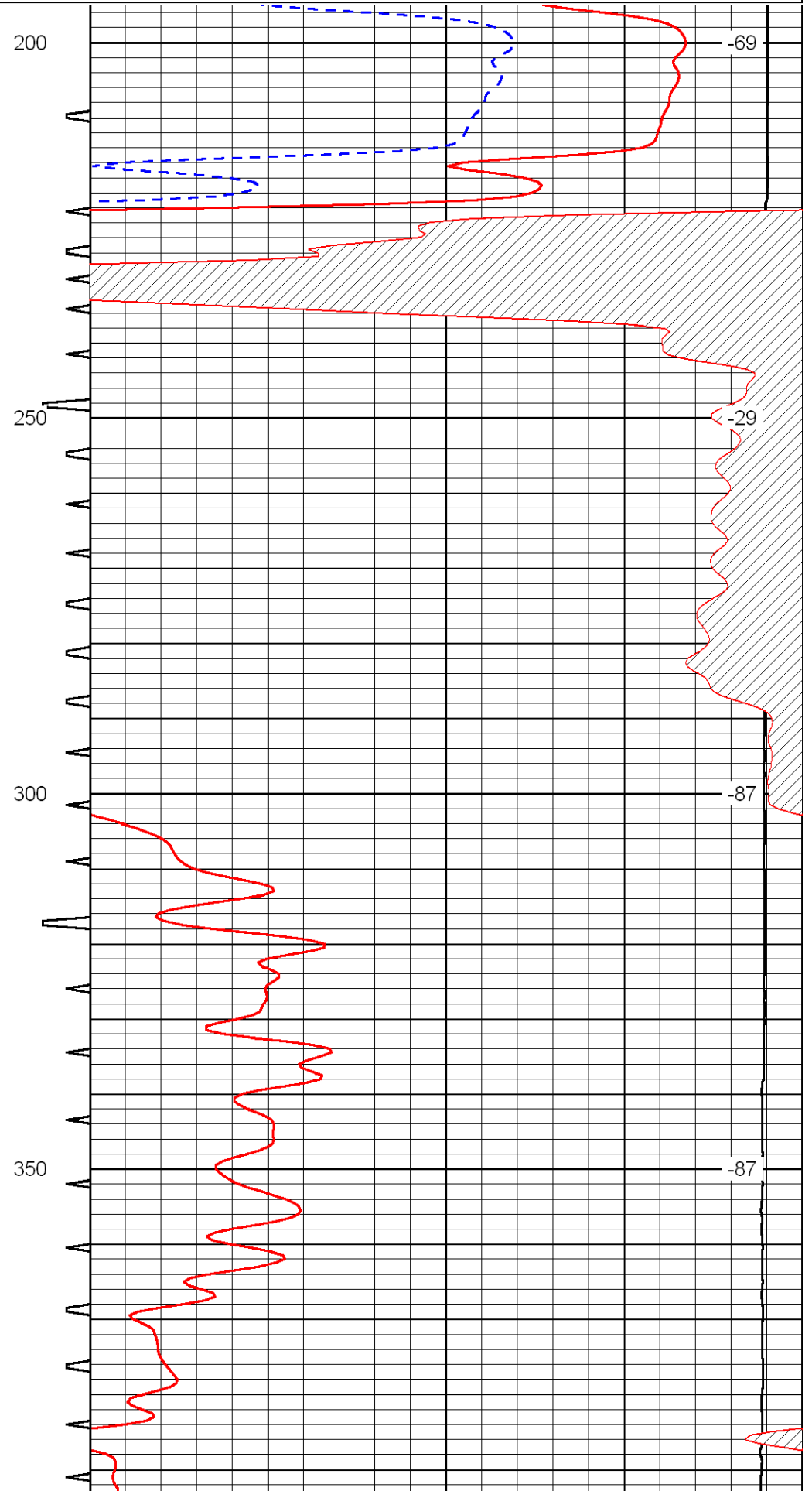
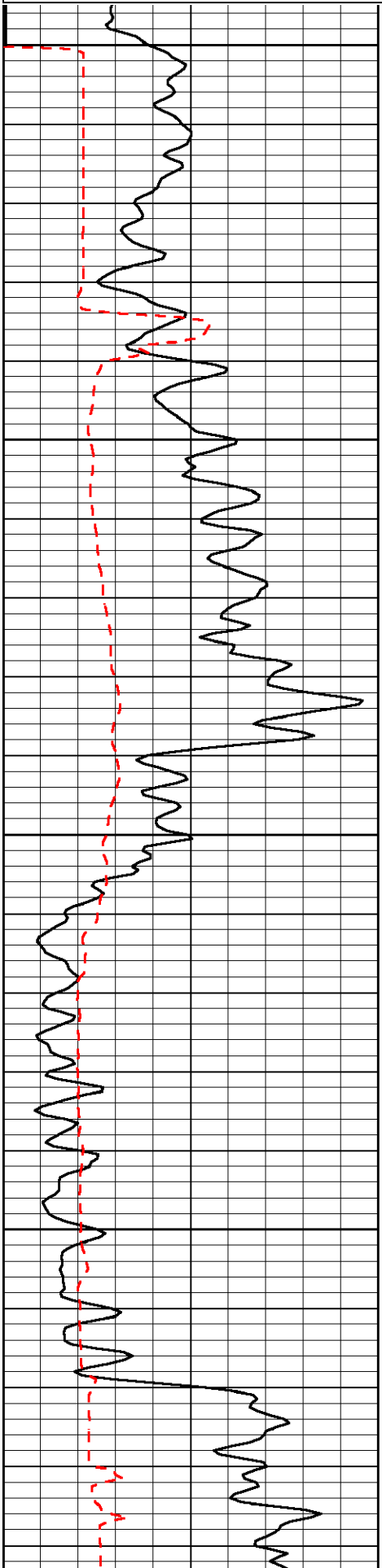
Thank you for using Log-Tech, Inc.  
(785) 625-3858

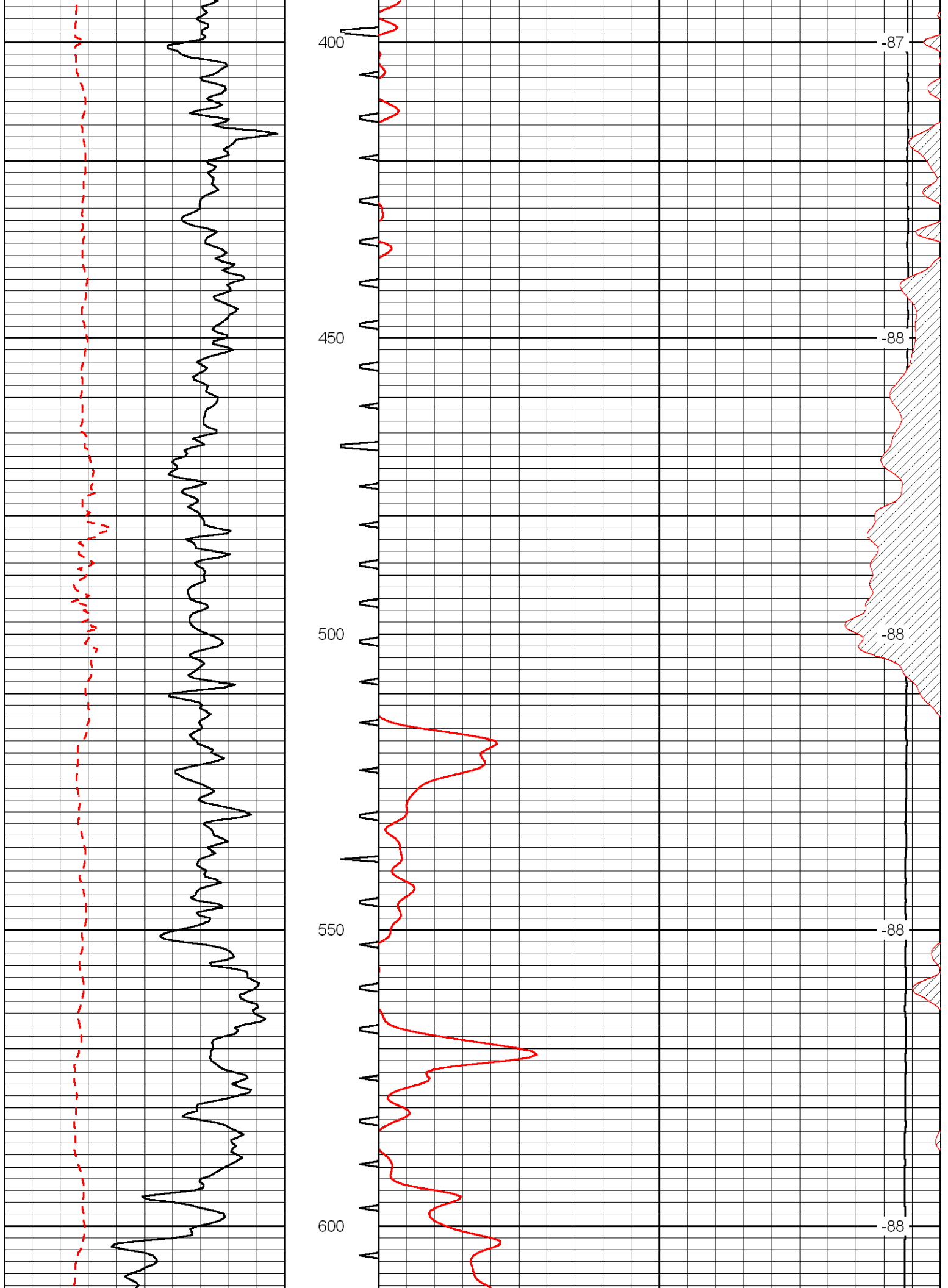
Dighton, KS  
8W to Dodge Rd., 3N, 3/4W, 1/2S into

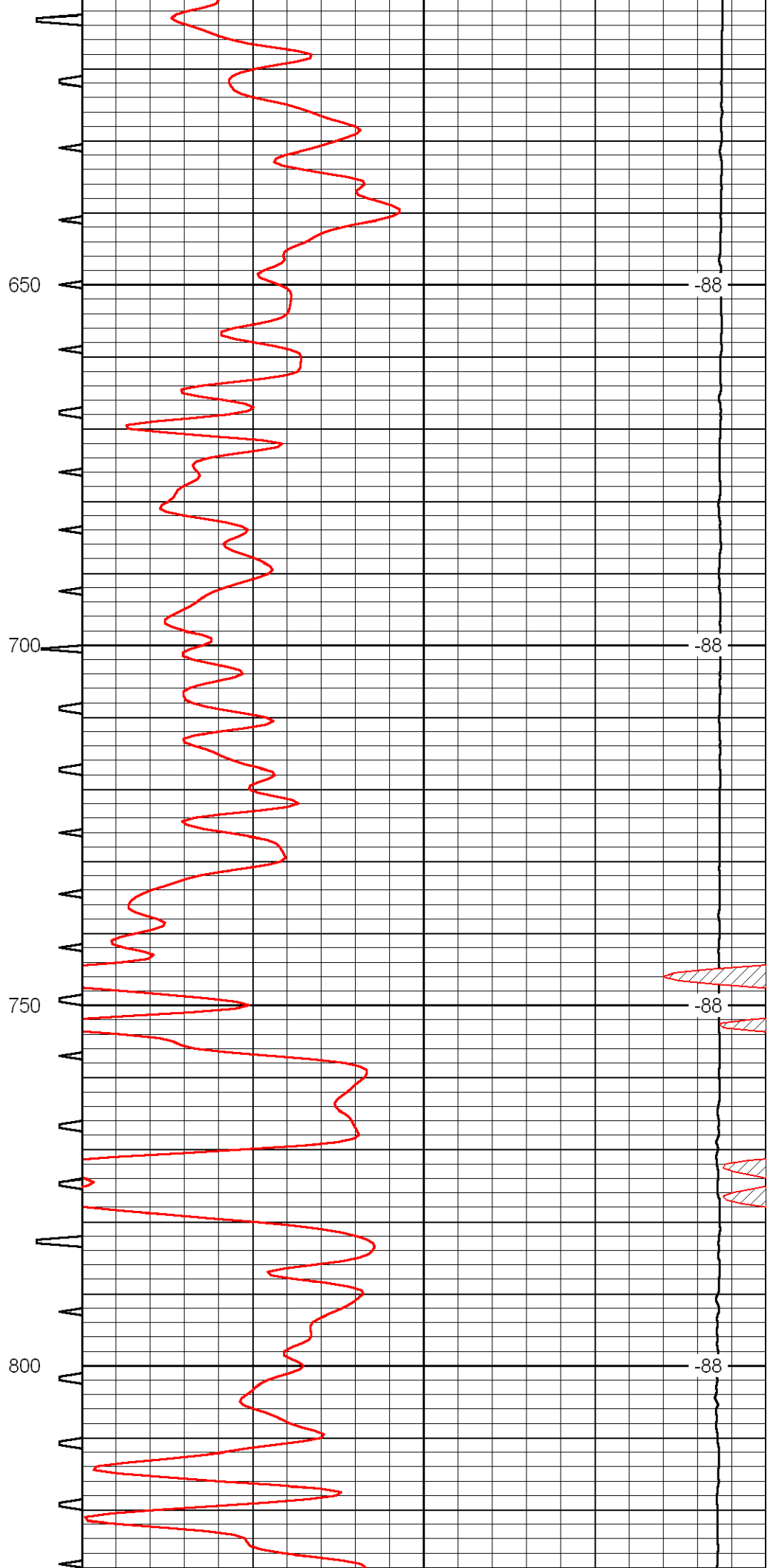
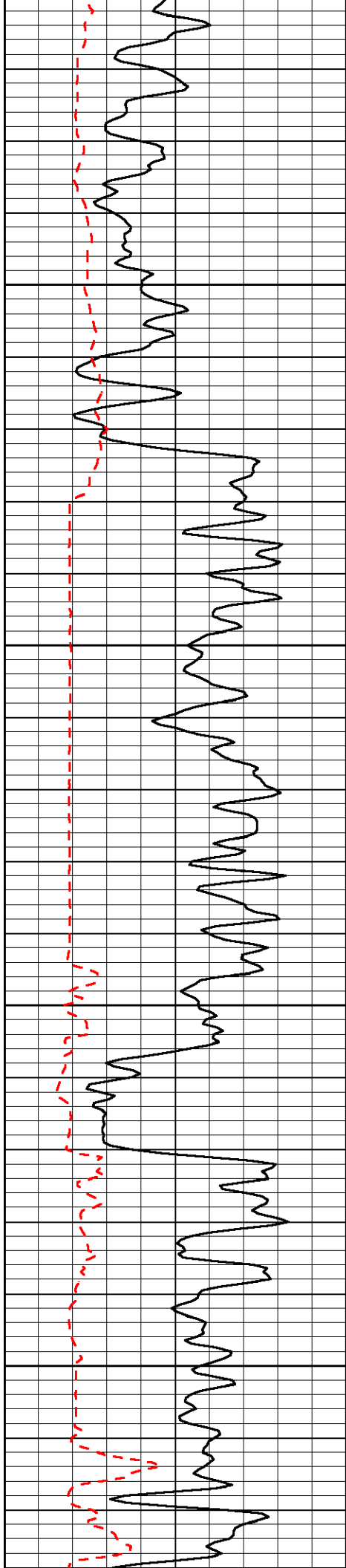
Database File:	murfin sharp 1-3hd.db
Dataset Pathname:	dil/murfstck
Presentation Format:	sonic
Dataset Creation:	Sat Aug 14 13:44:16 2010
Charted by:	Depth in Feet scaled 1:240

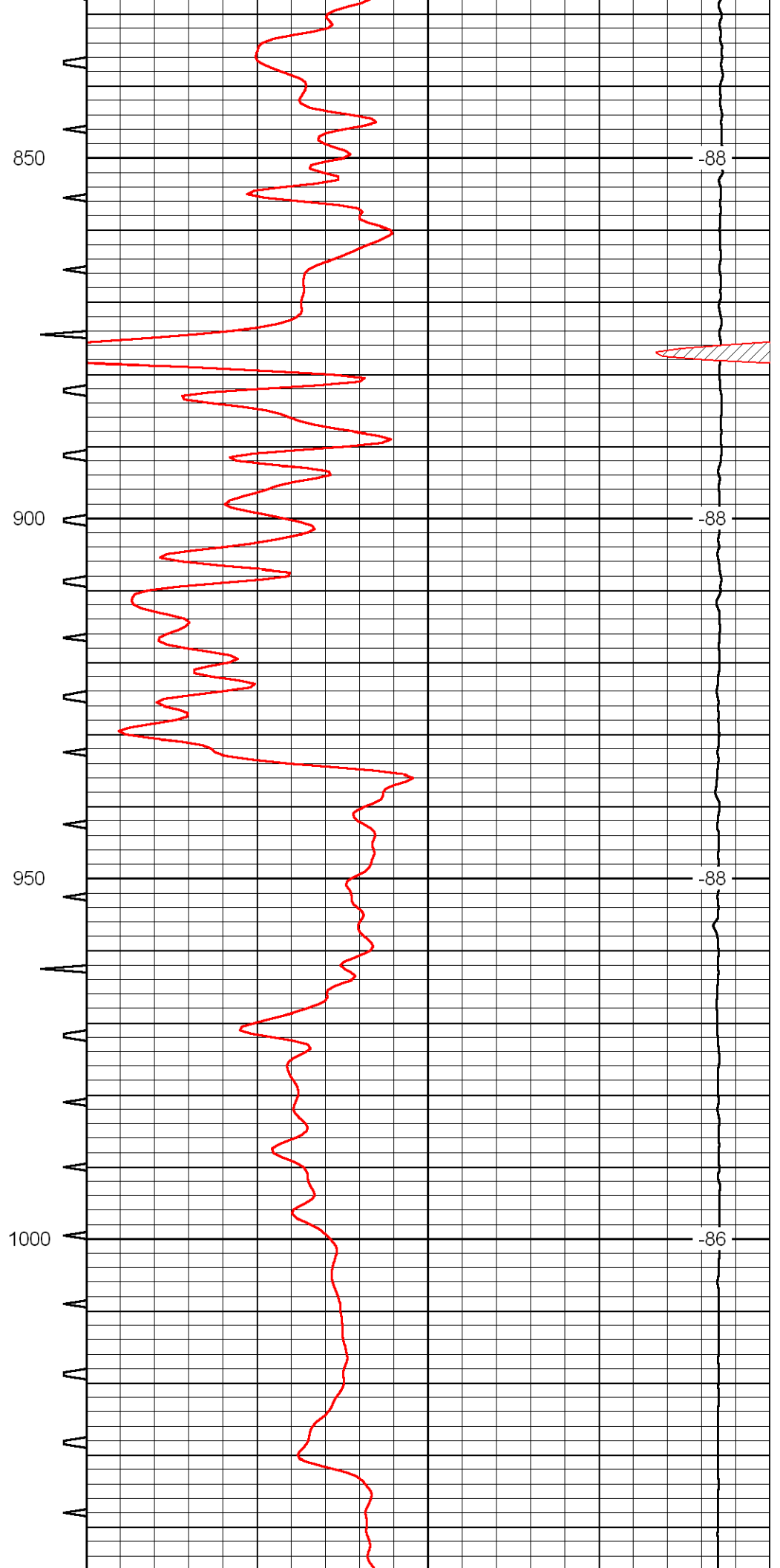
0	Gamma Ray	150	Sonic Int	140	Delta Time (usec/ft)	40
150	Gamma Ray	300	5	0	Sonic Porosity	-10
6	dCAL (GAPI)	16		15000	LTEN (lb)	0

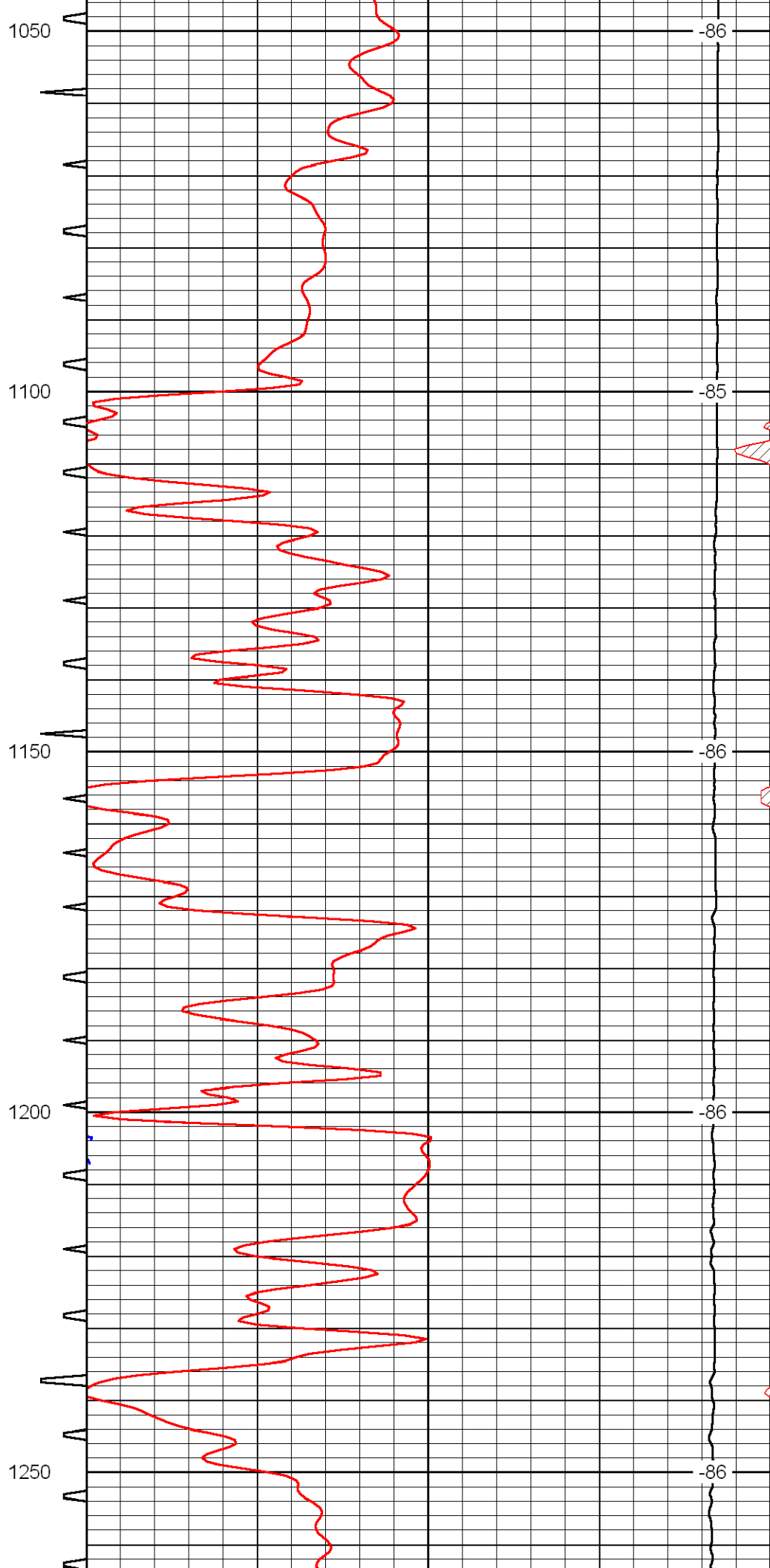
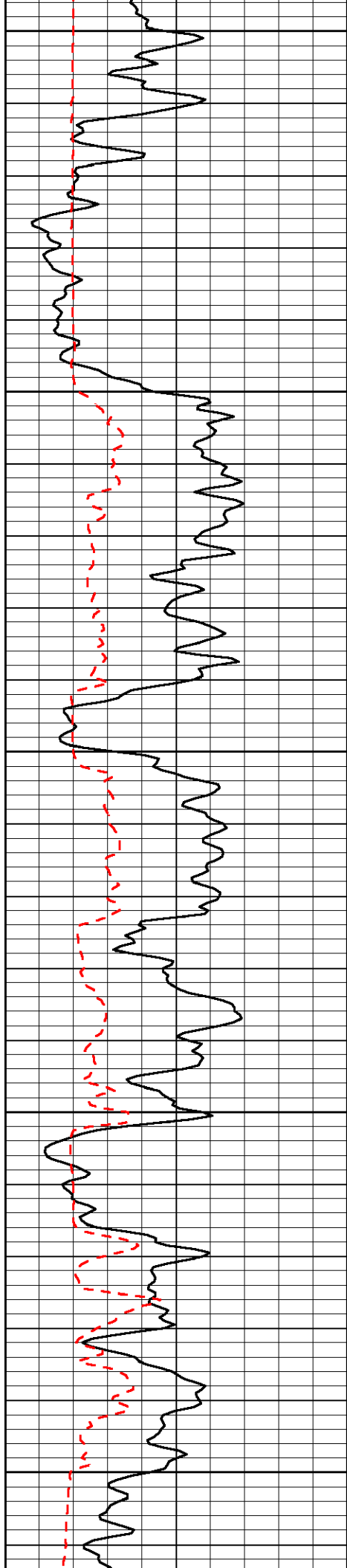
LSPD

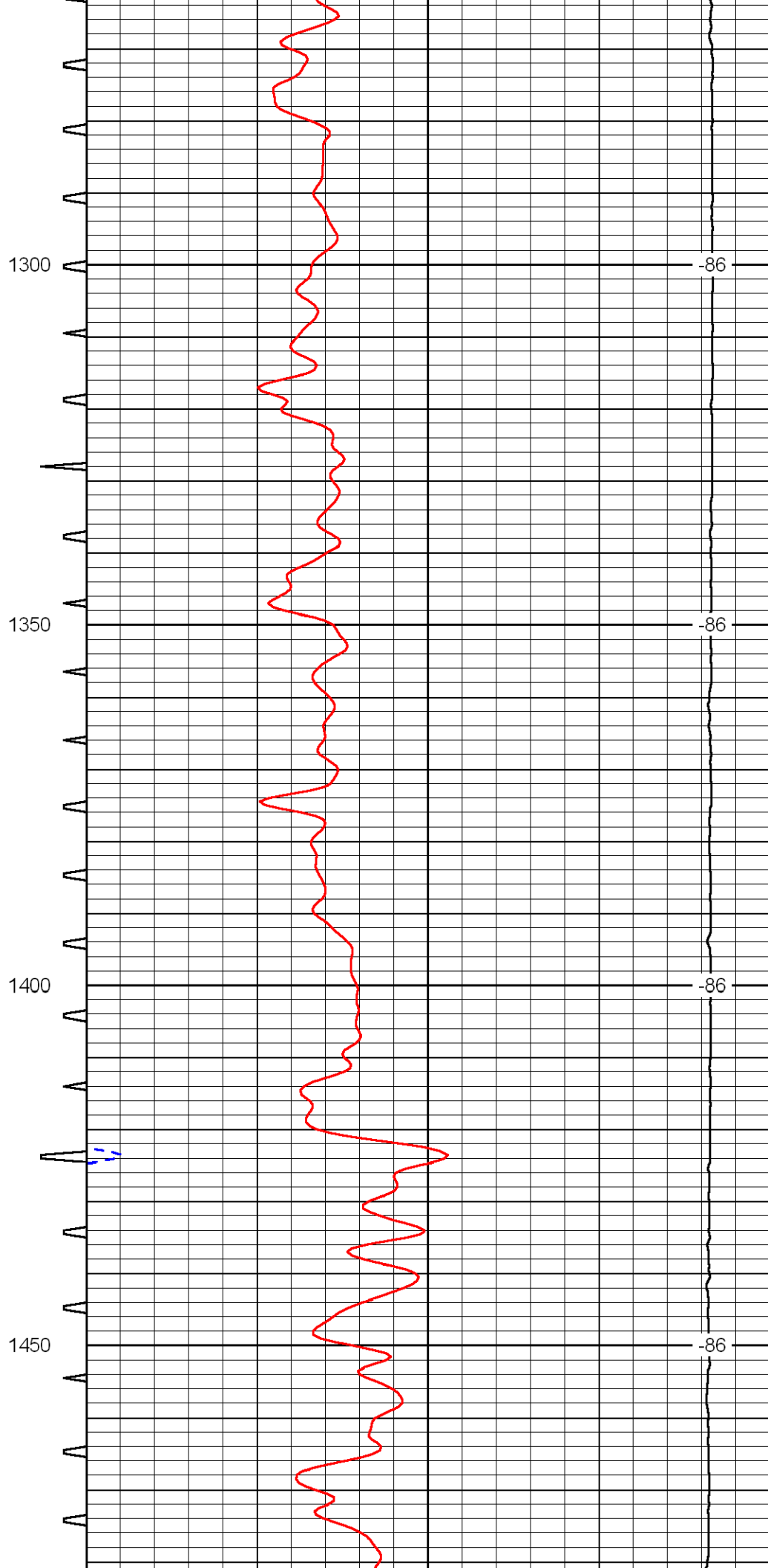
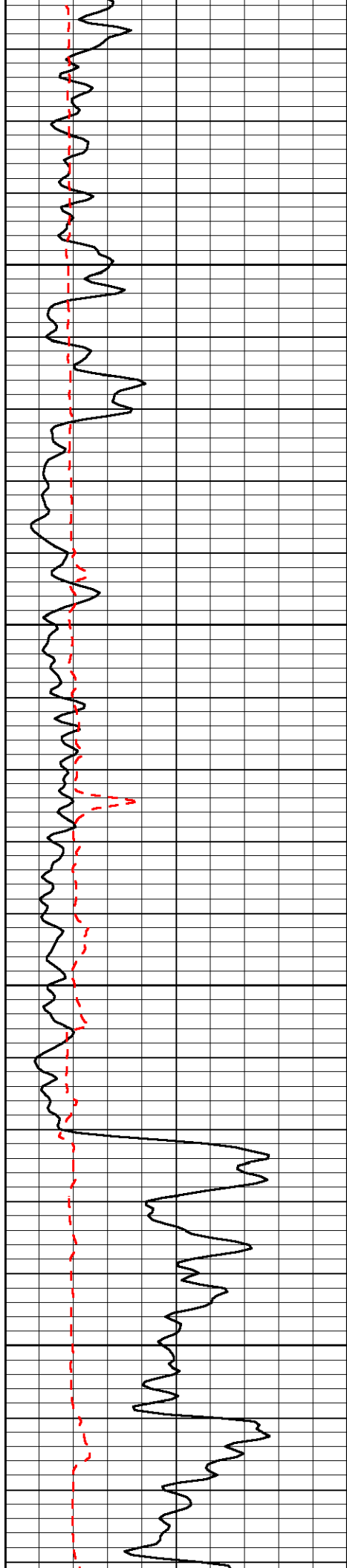


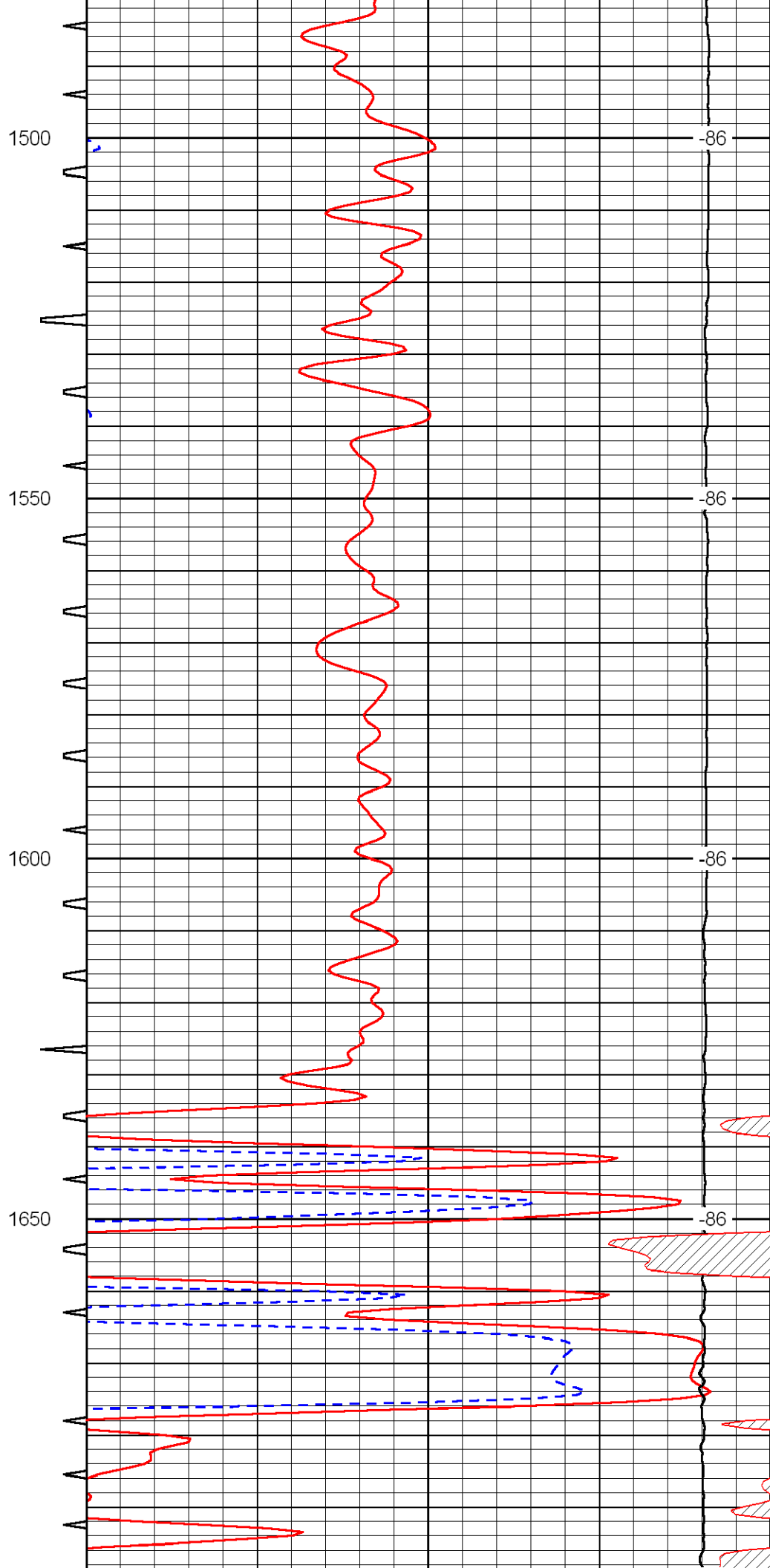
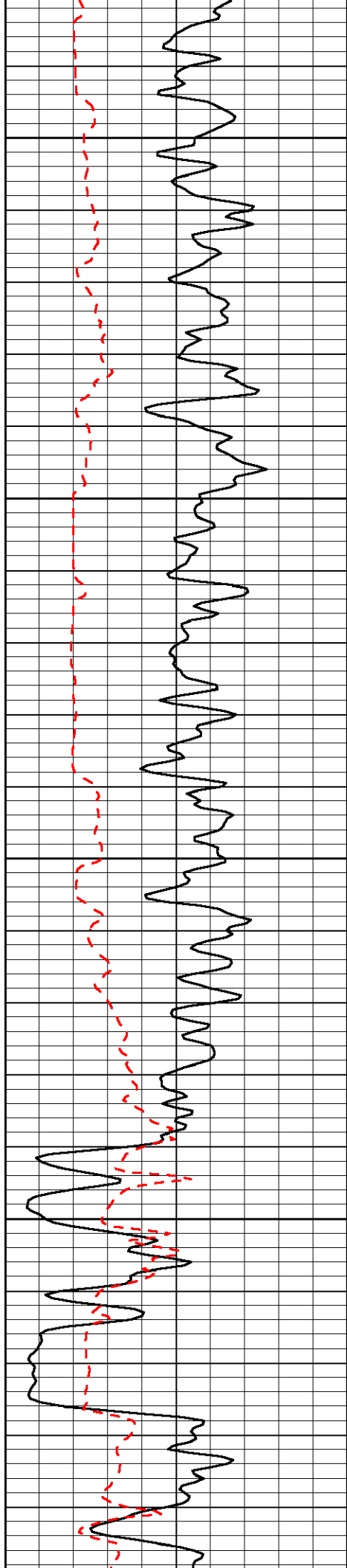


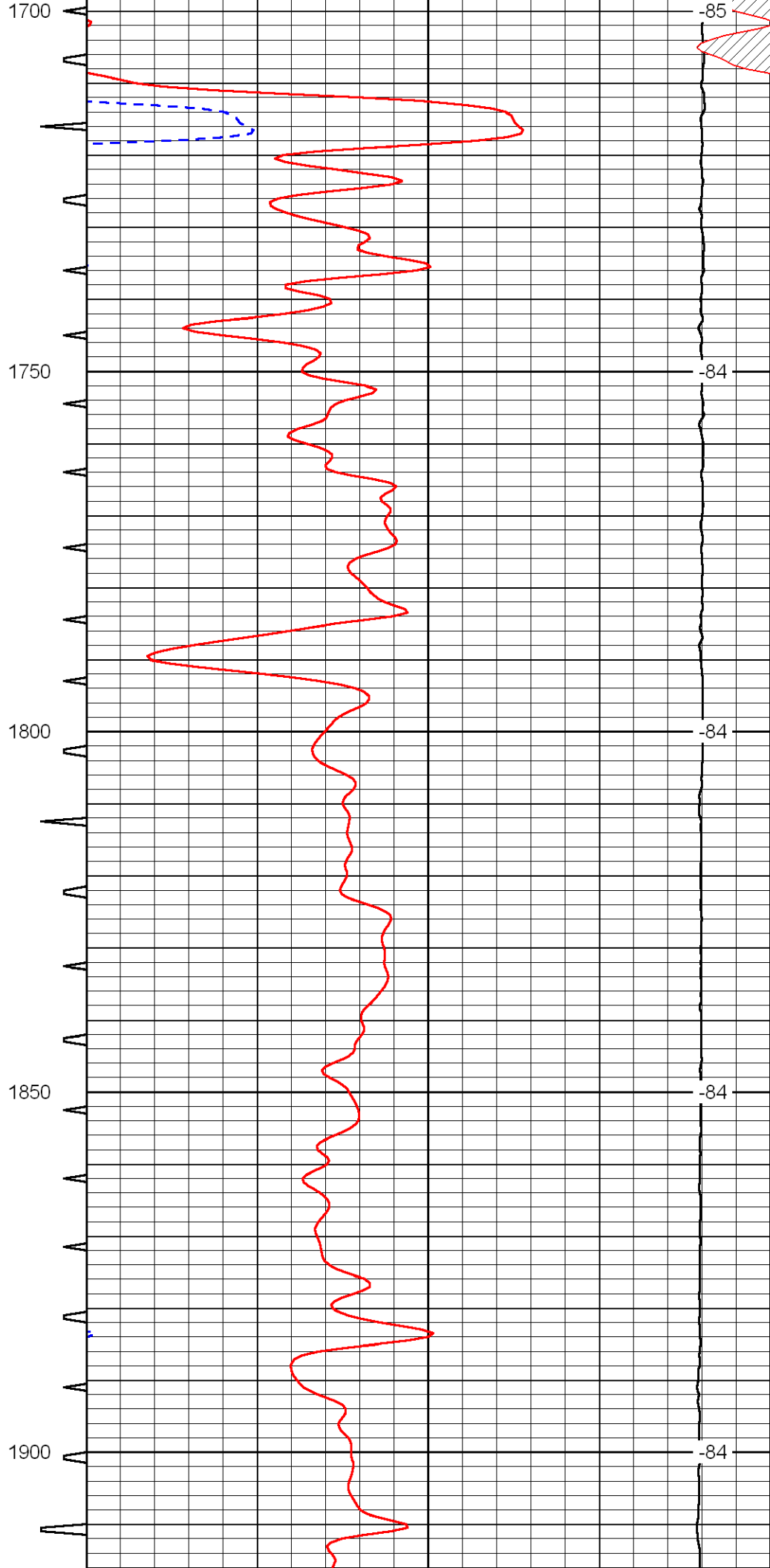
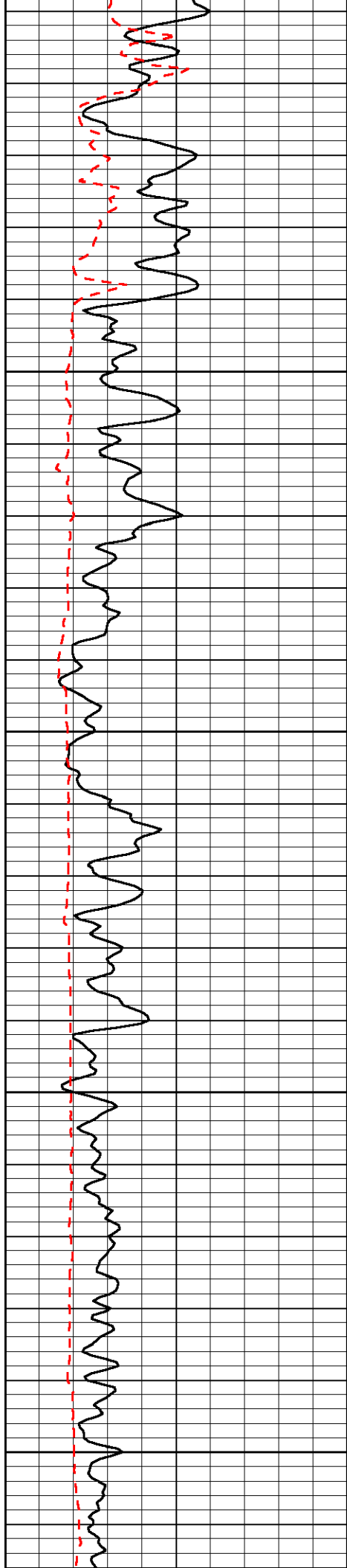


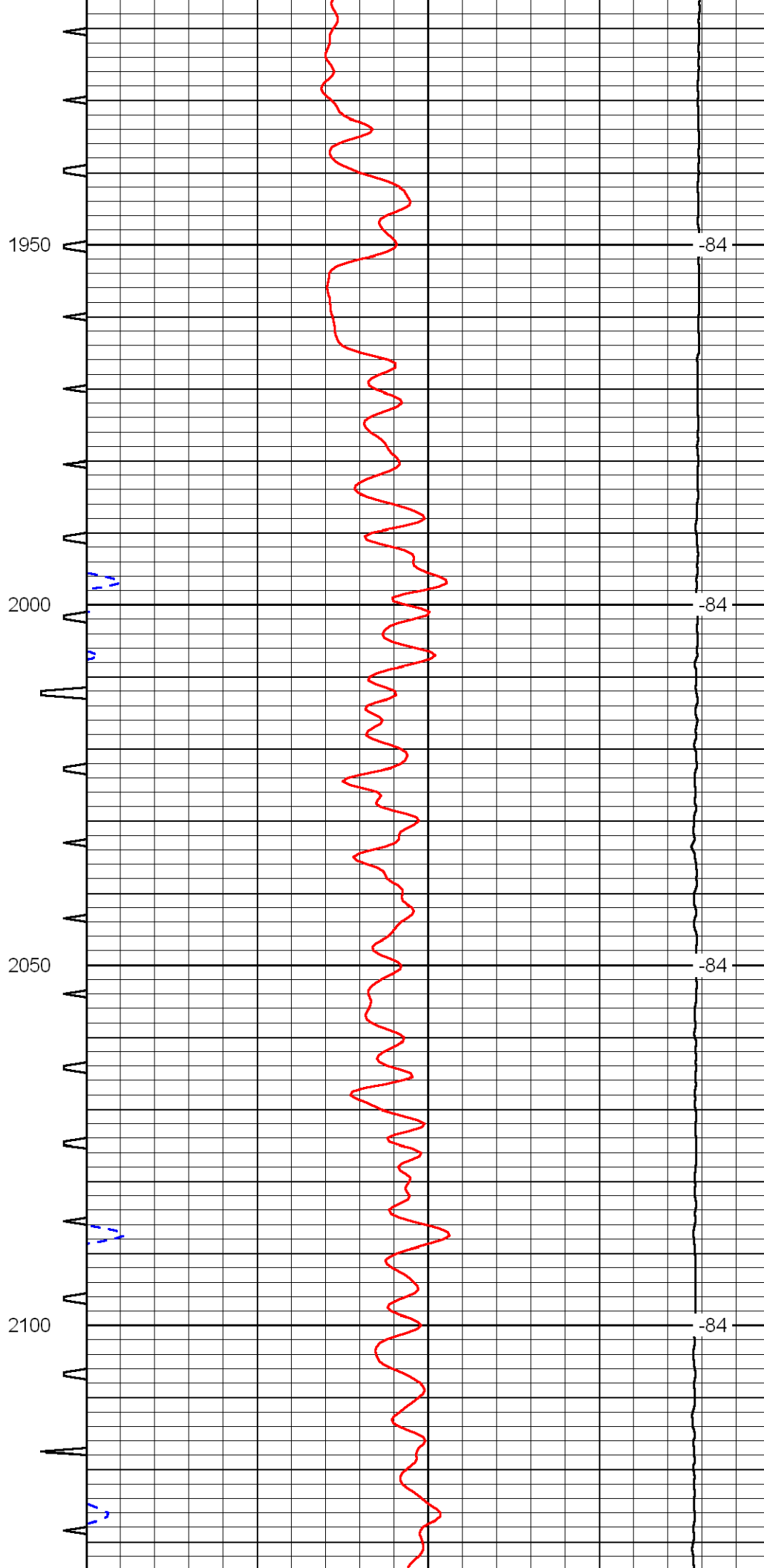
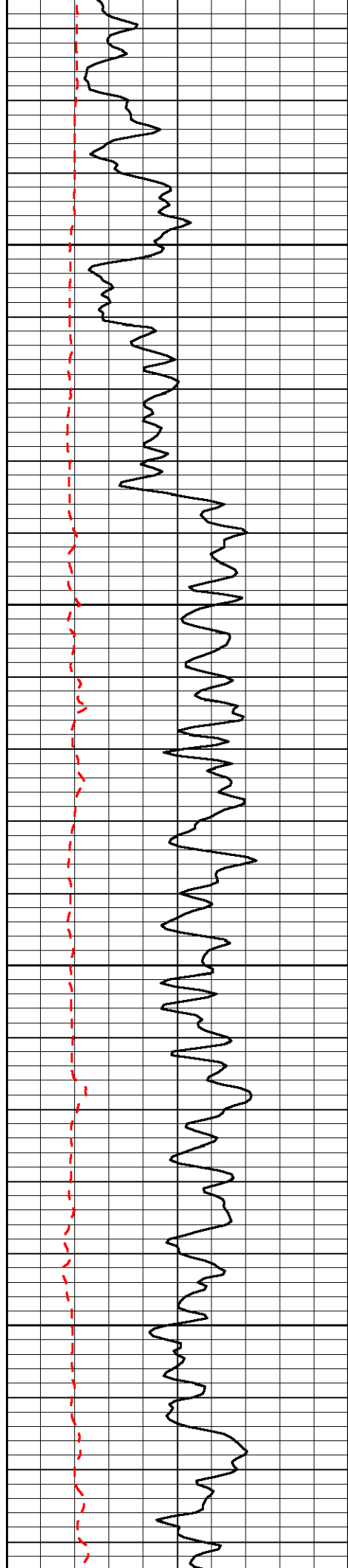


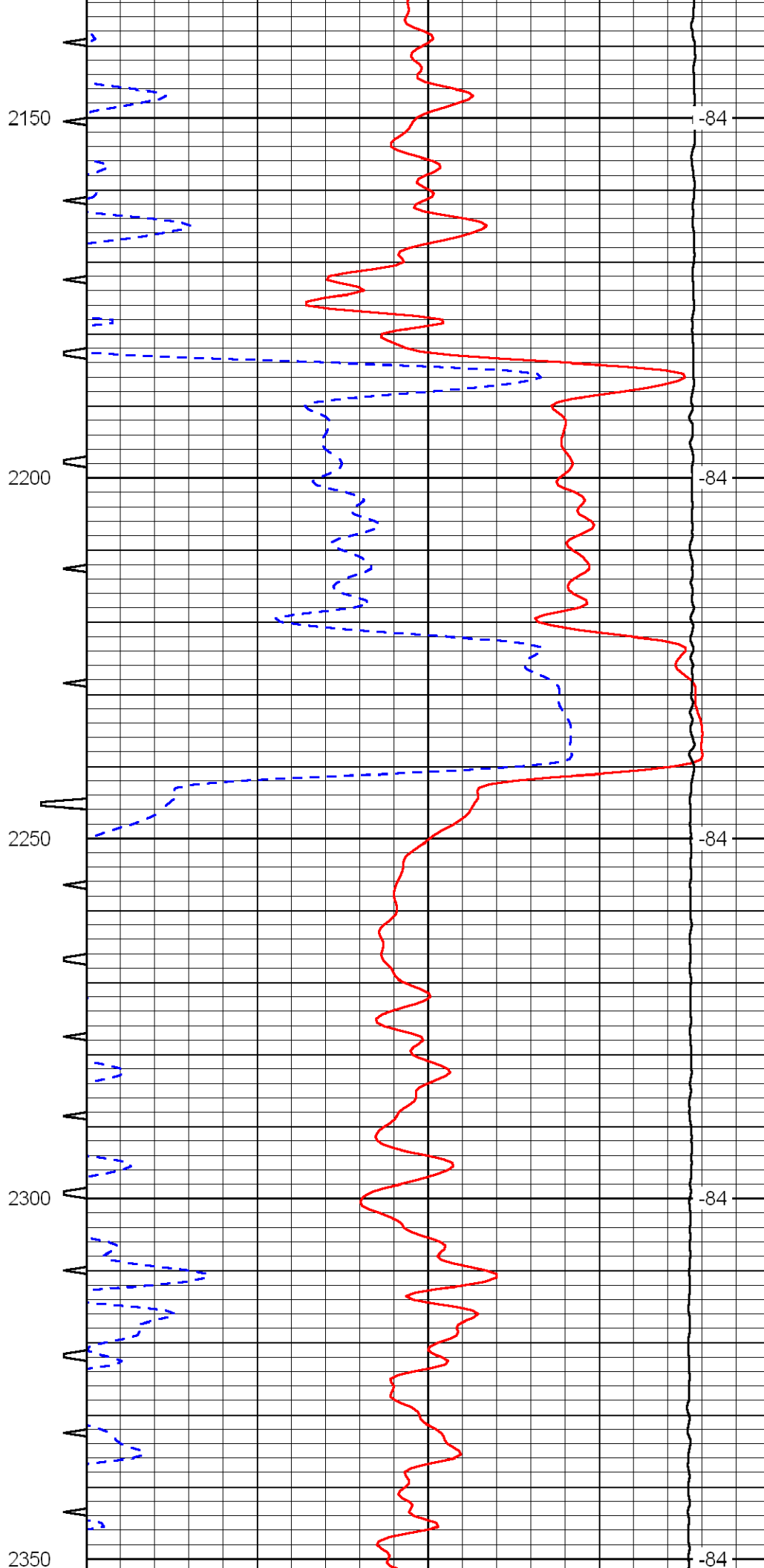
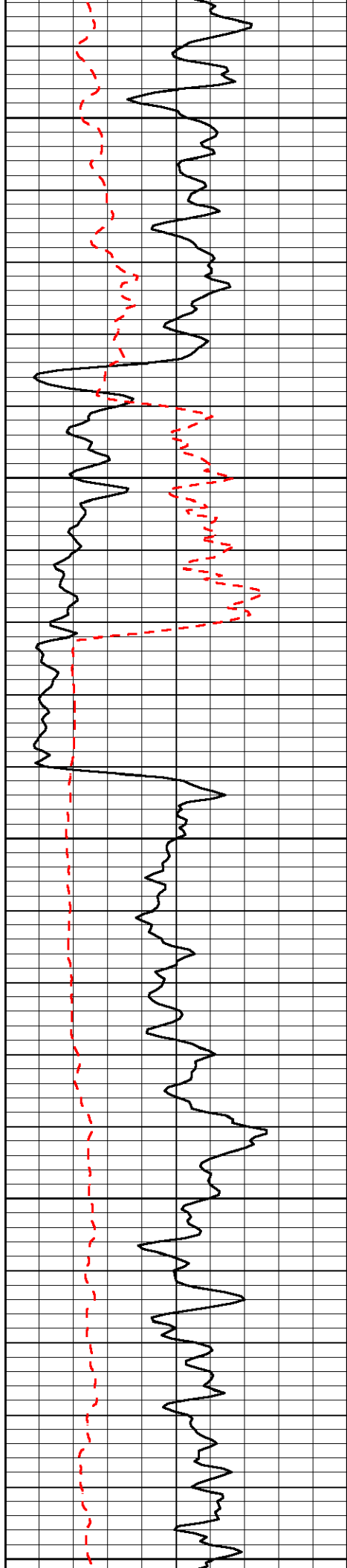


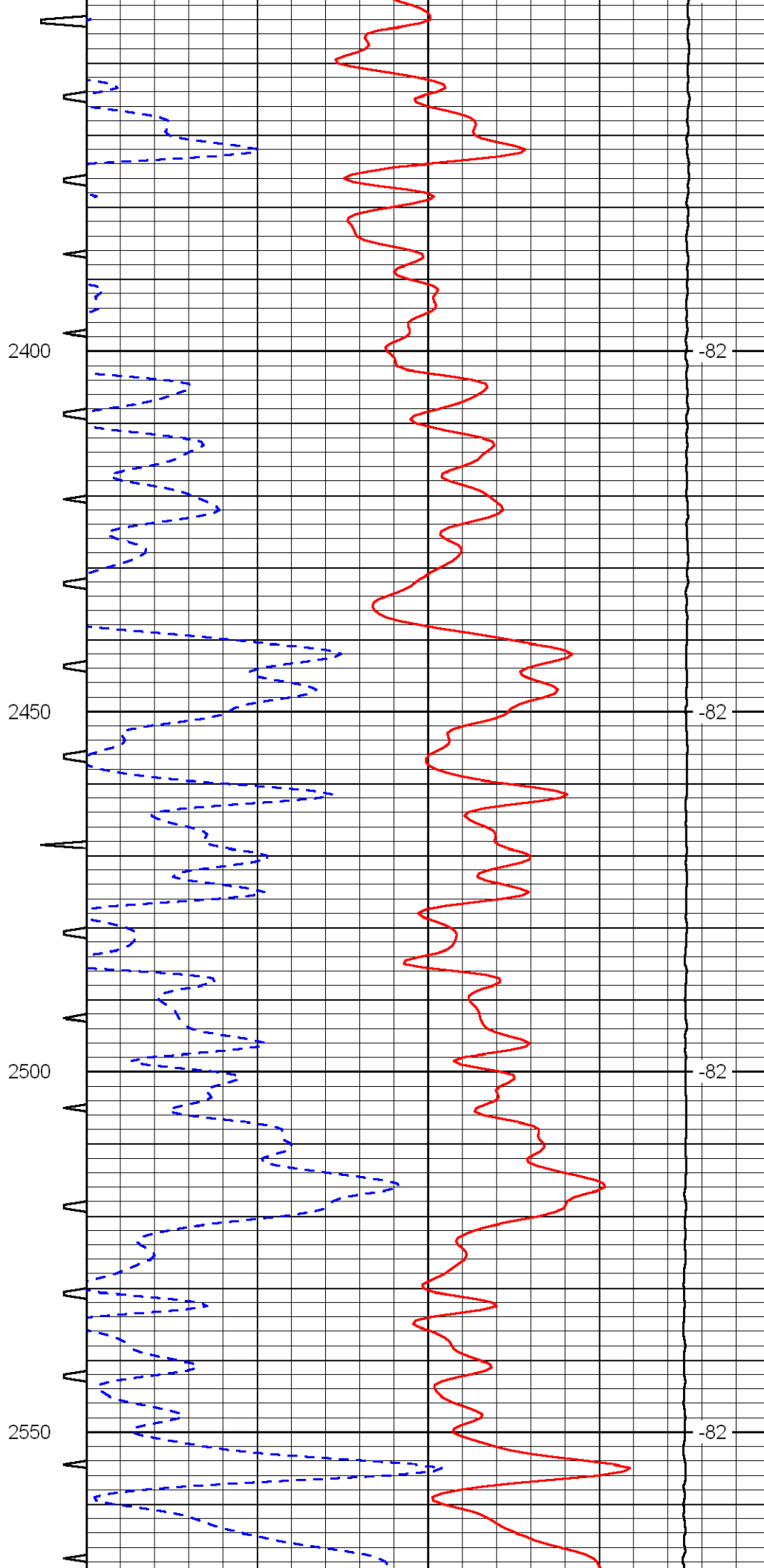
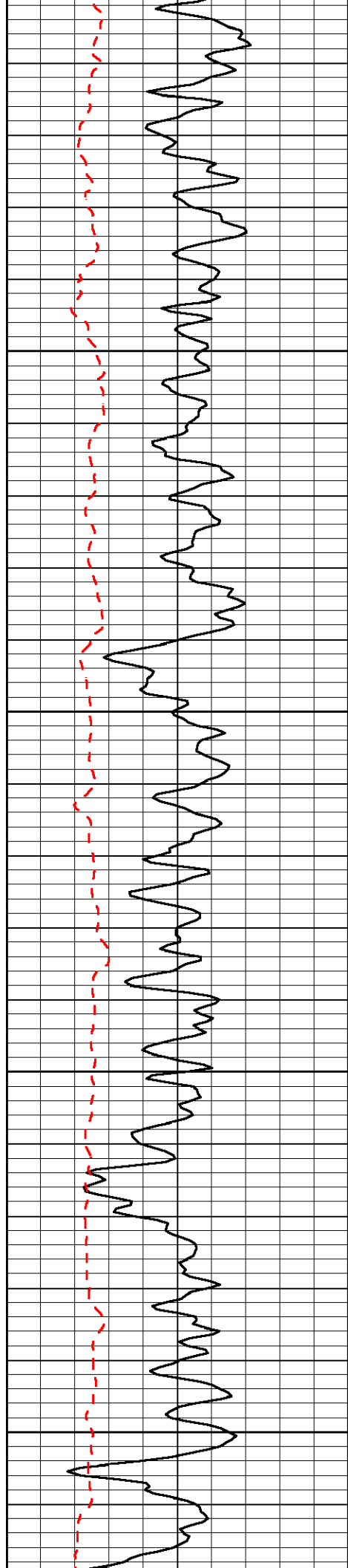


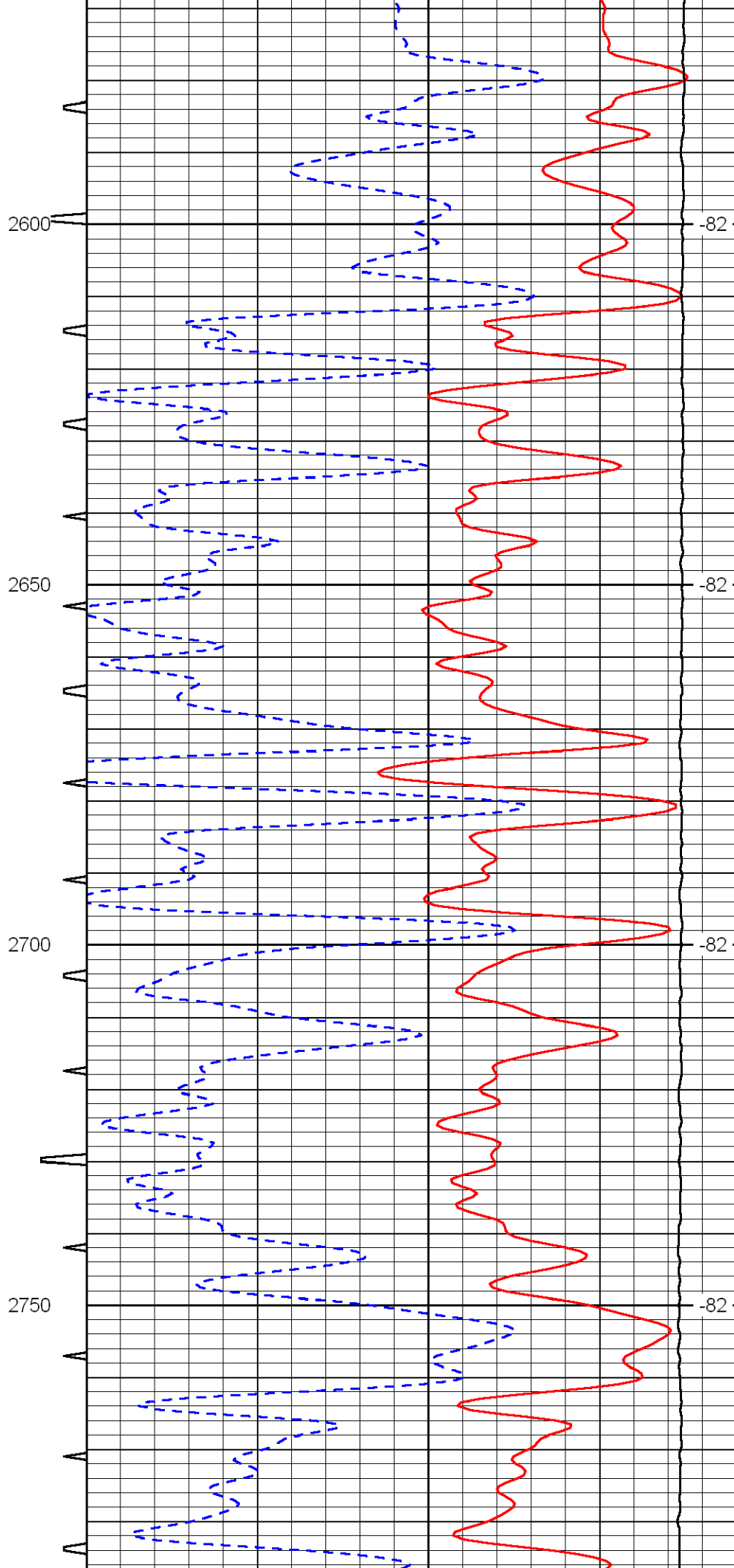
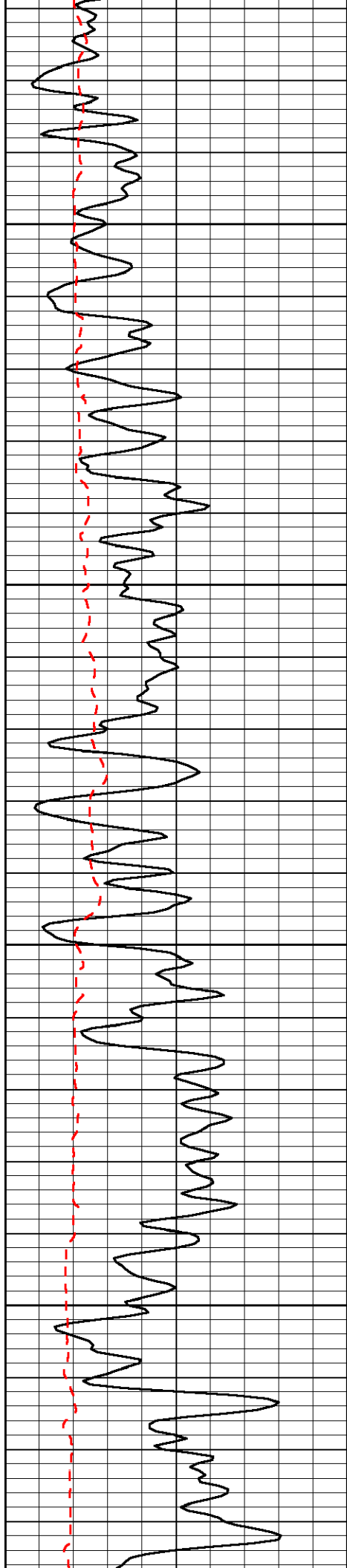


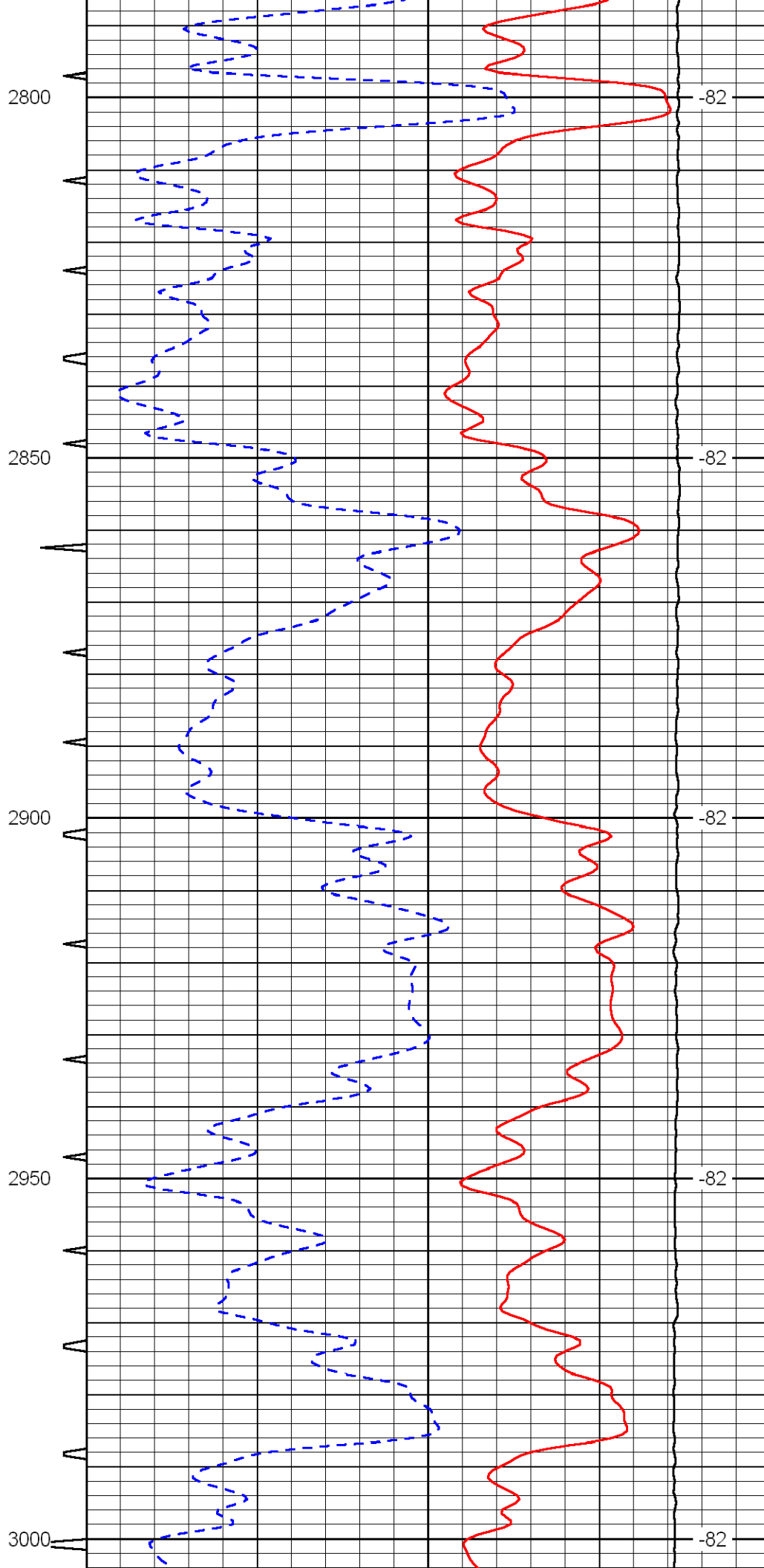
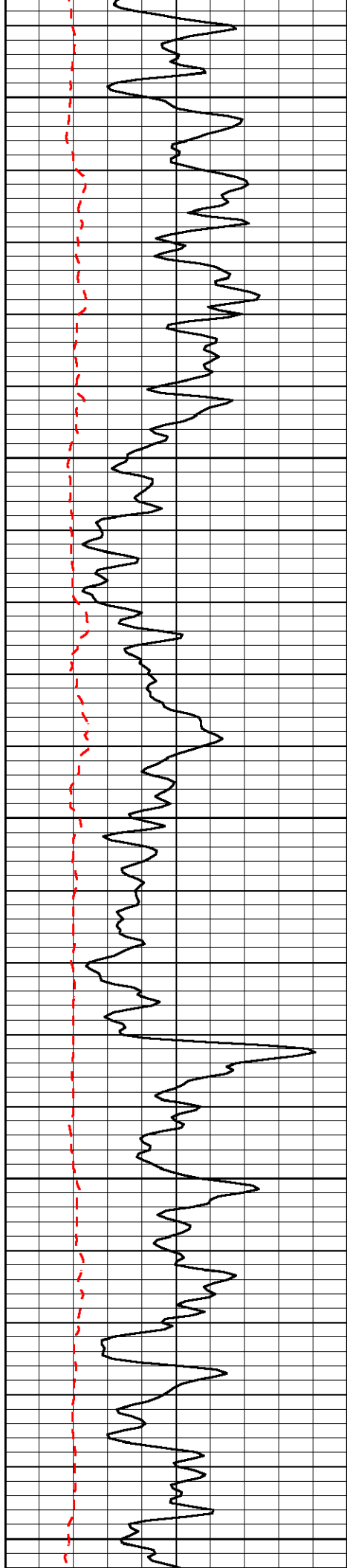


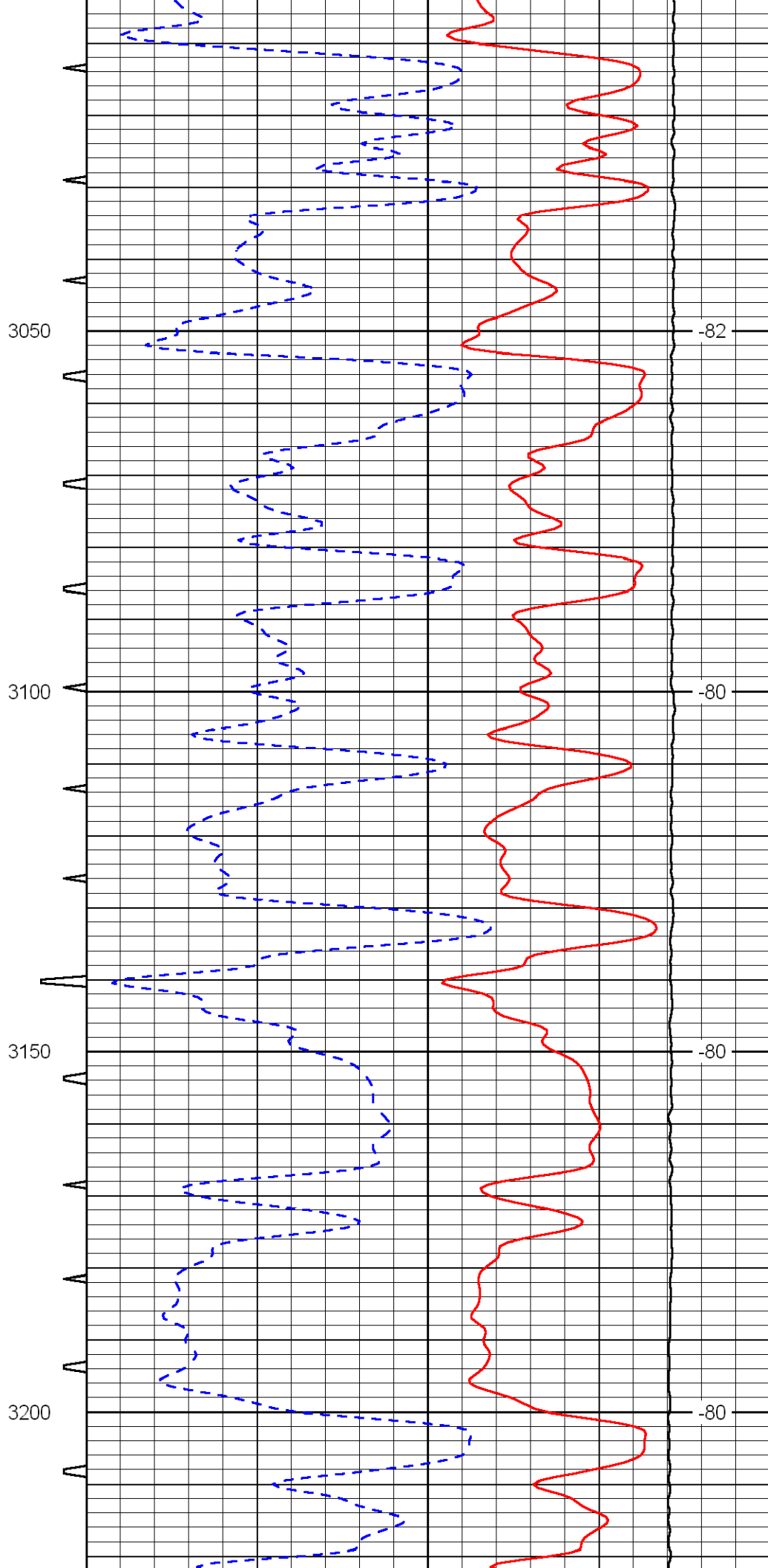
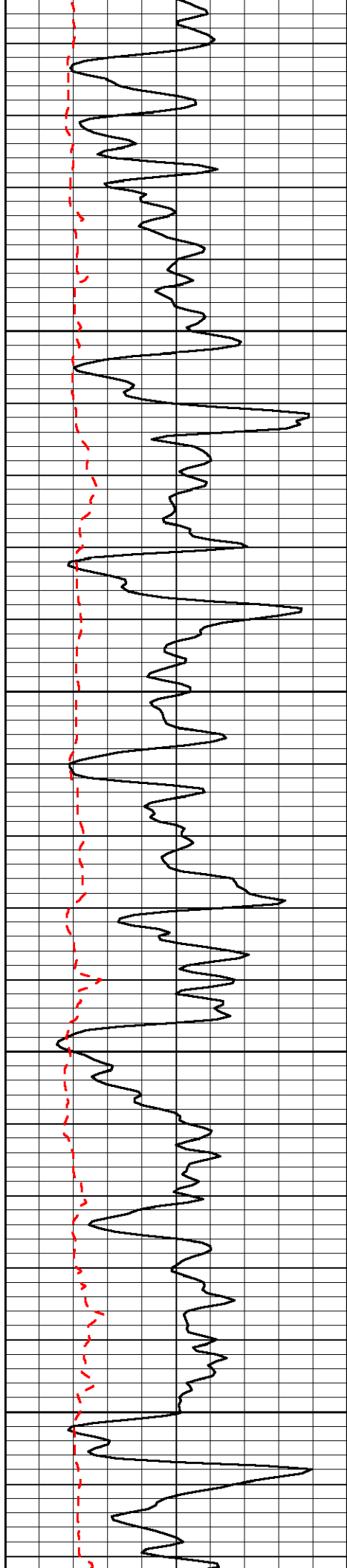


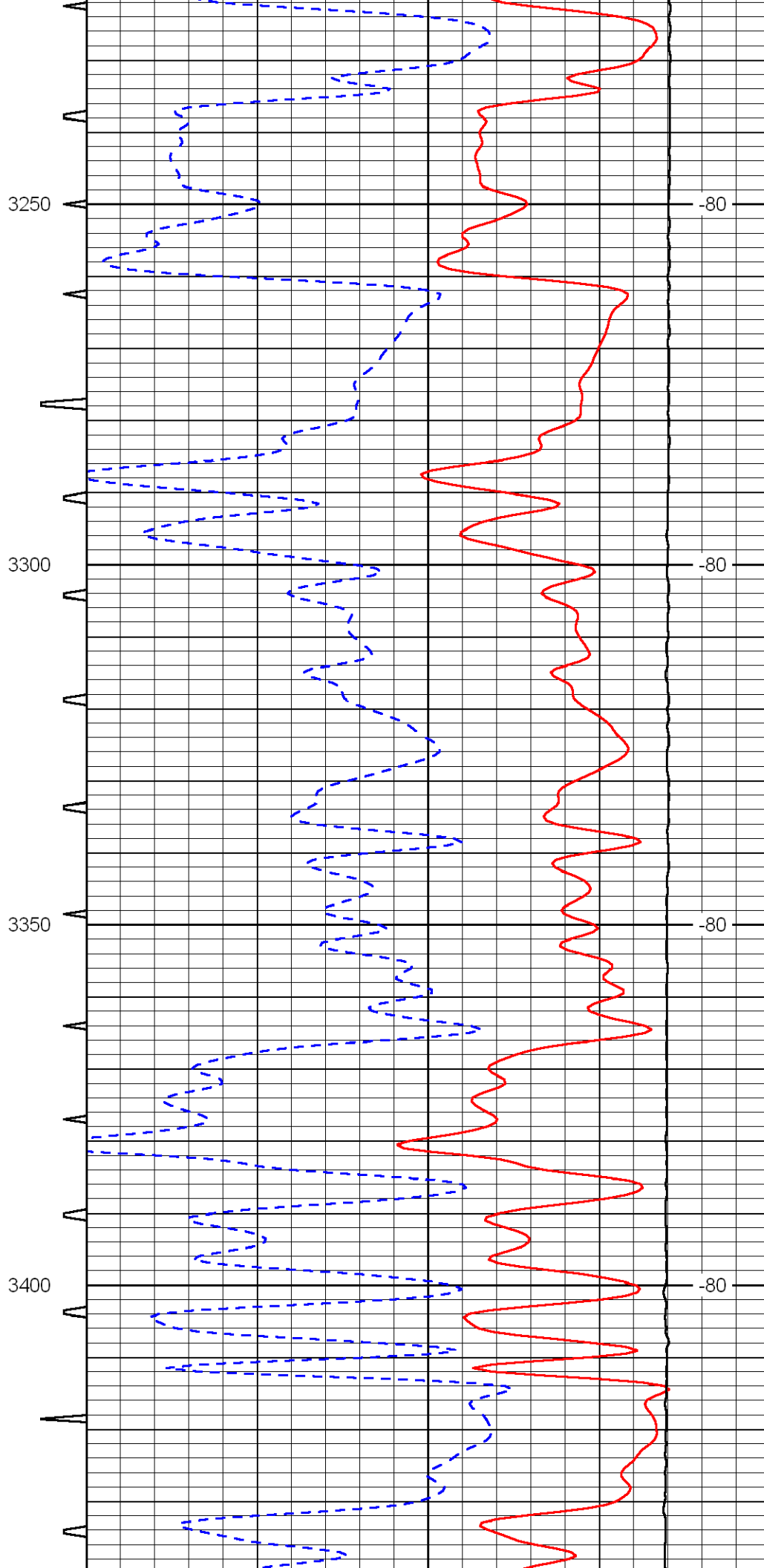
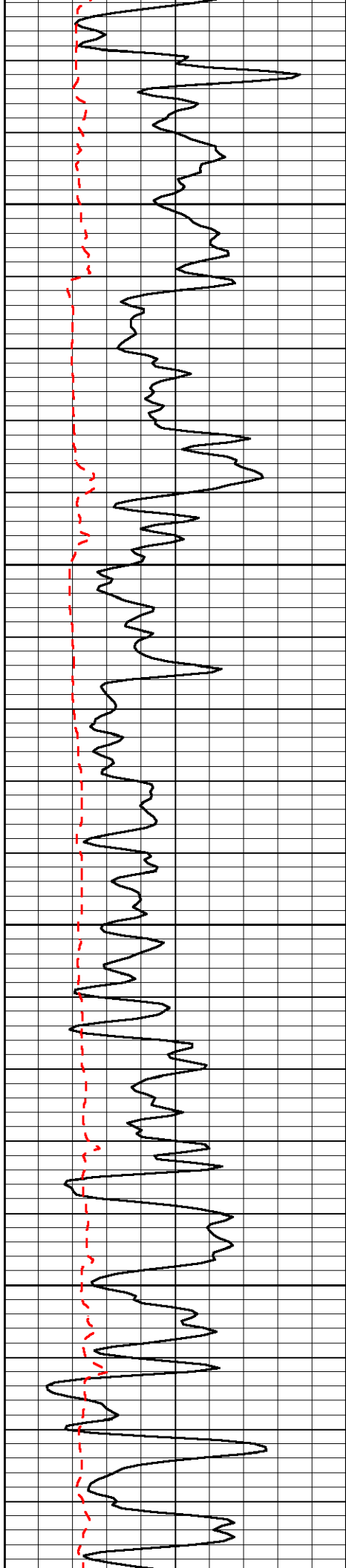


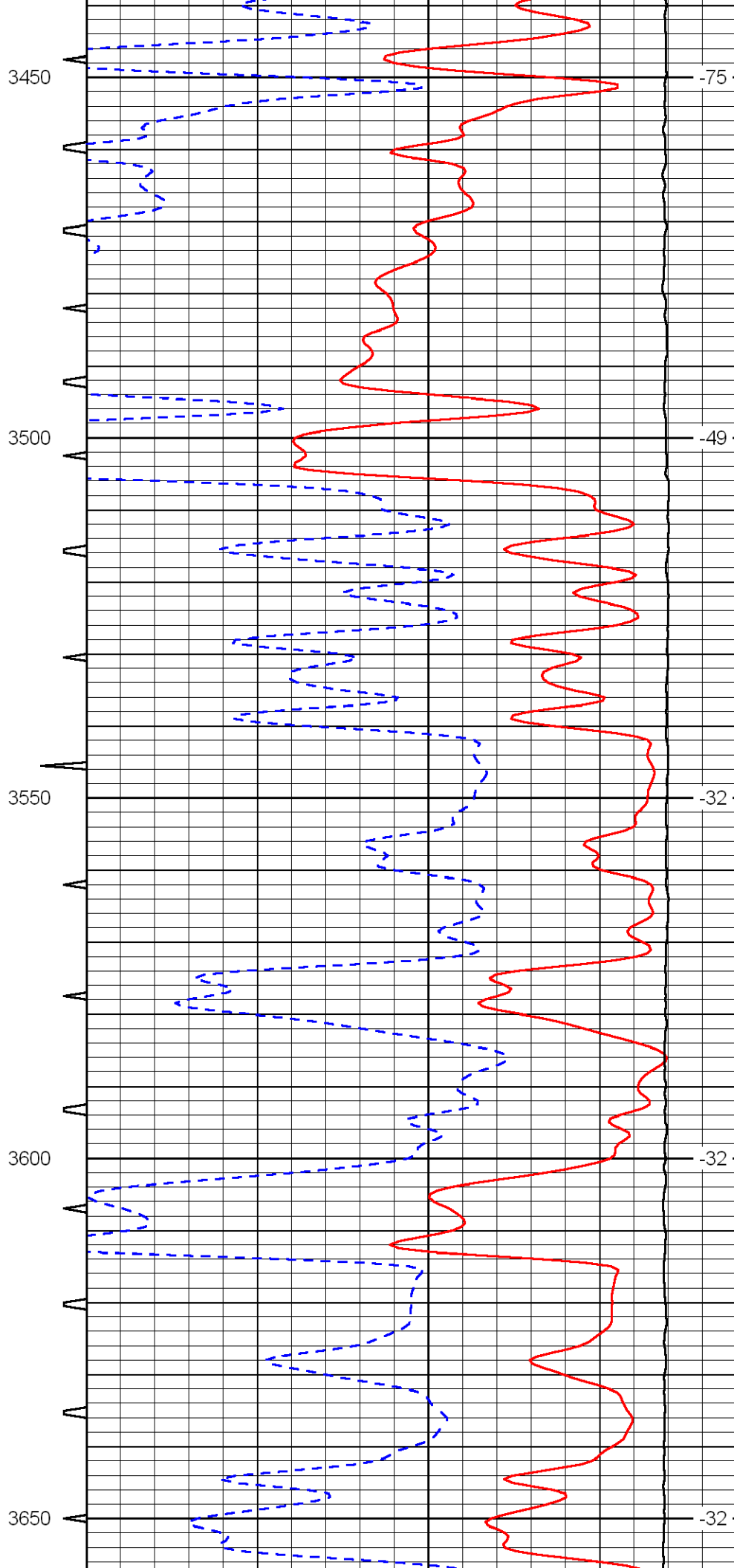
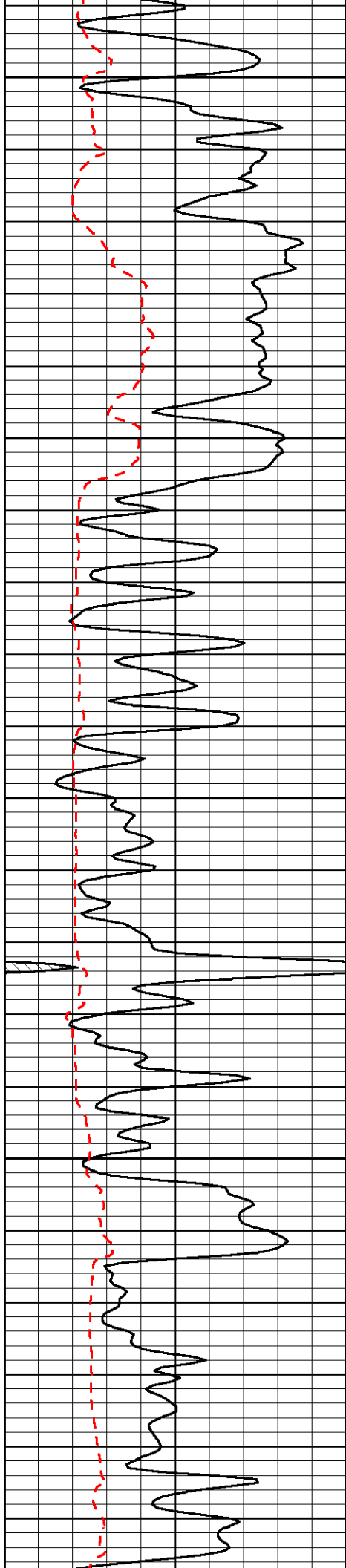


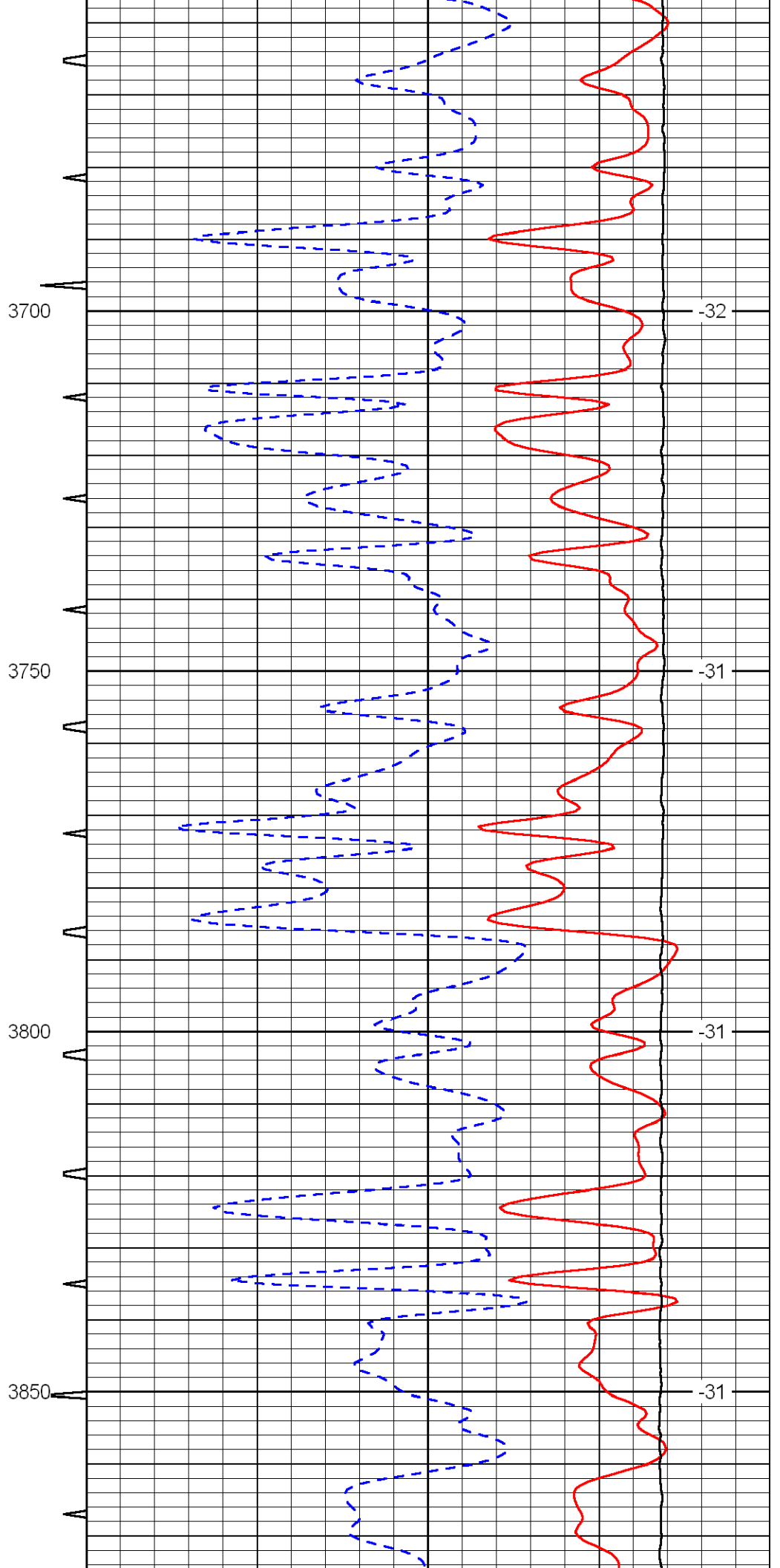
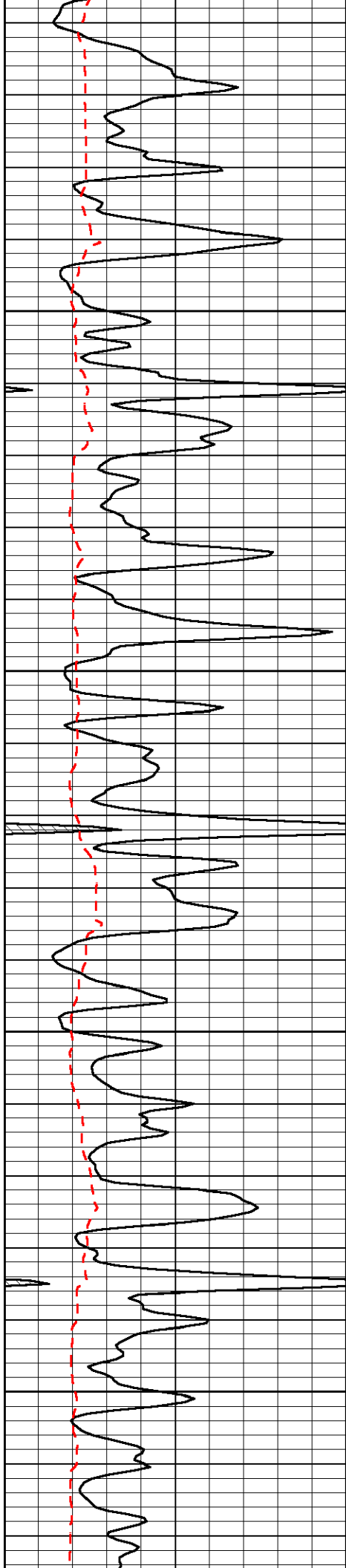


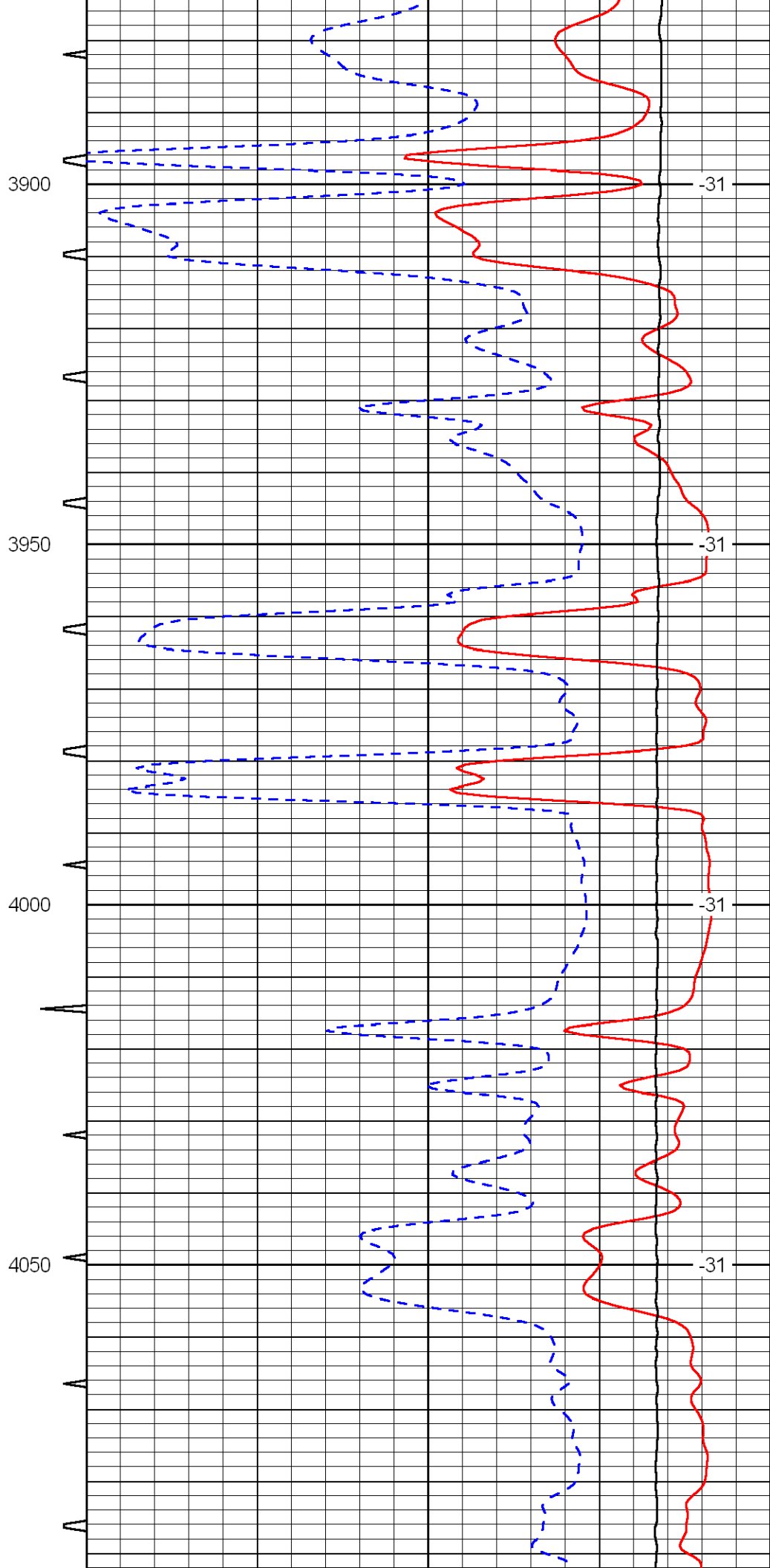
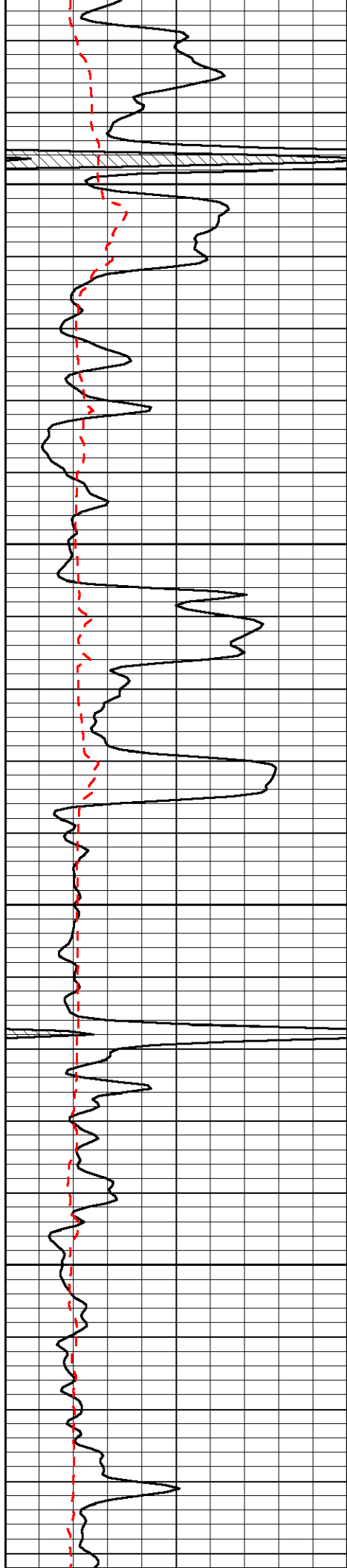


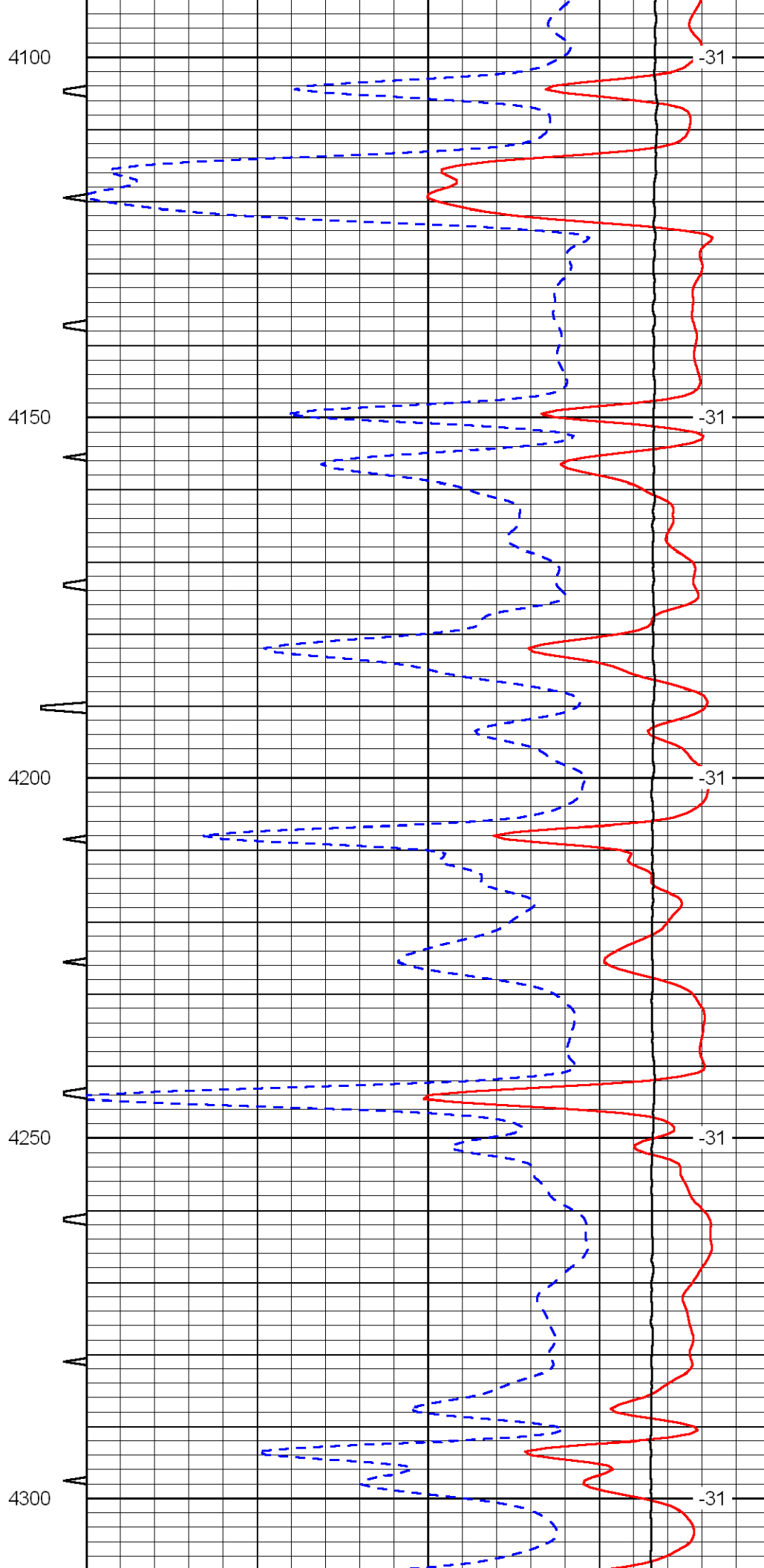
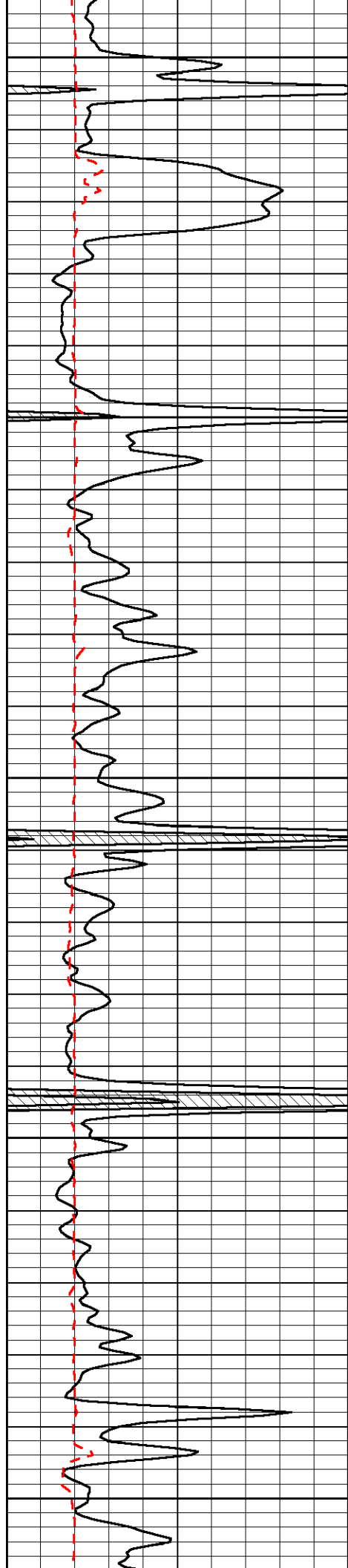


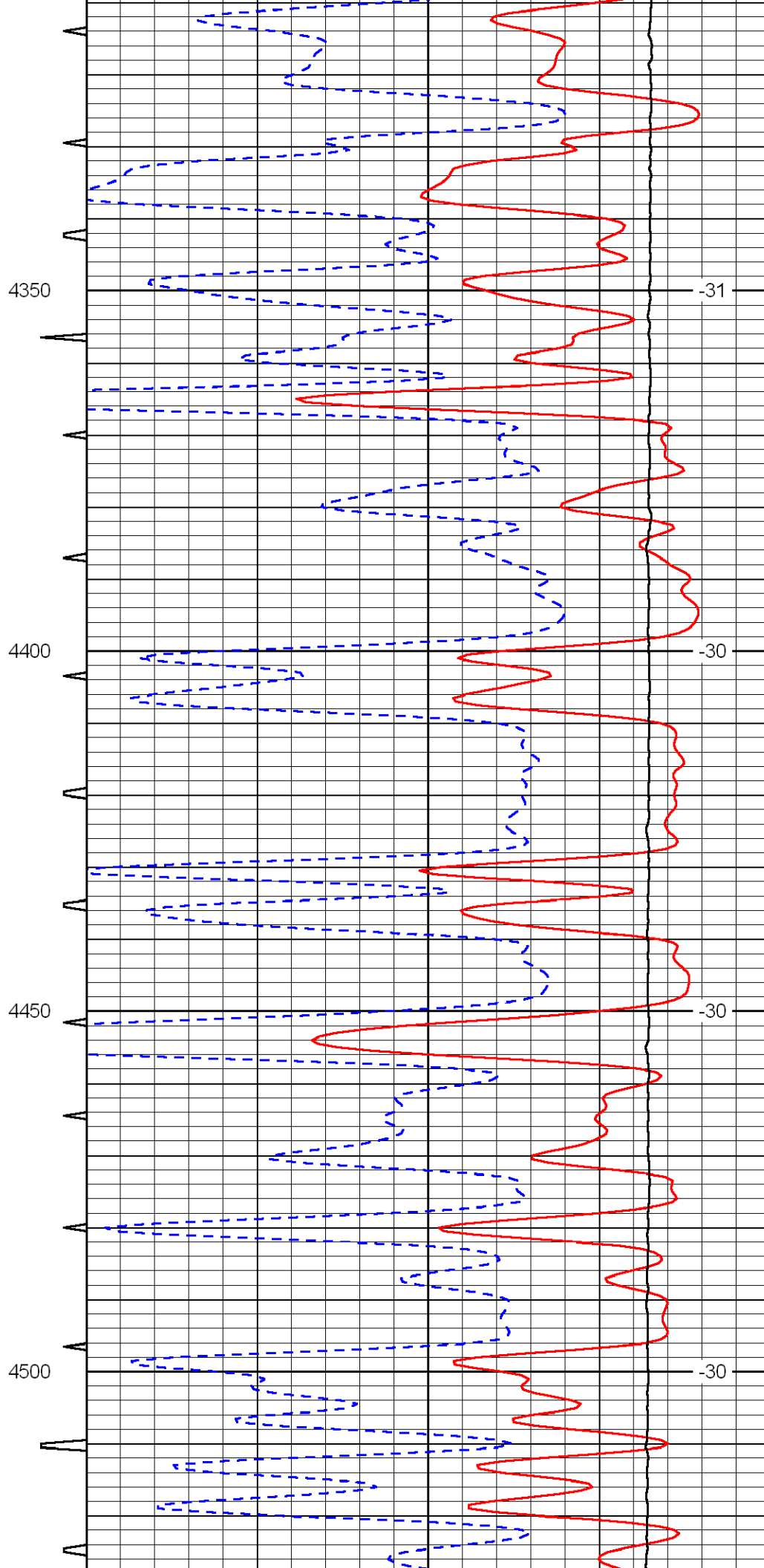
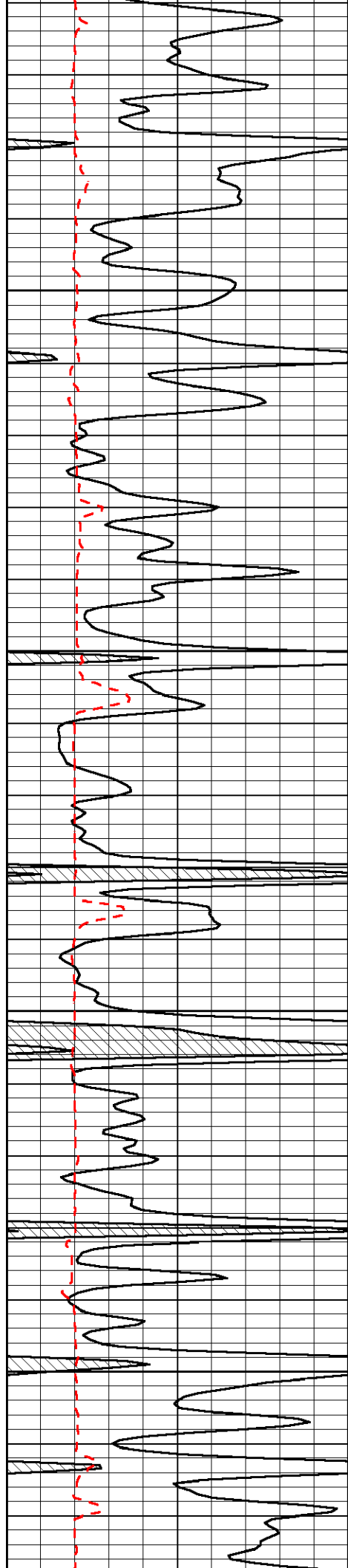


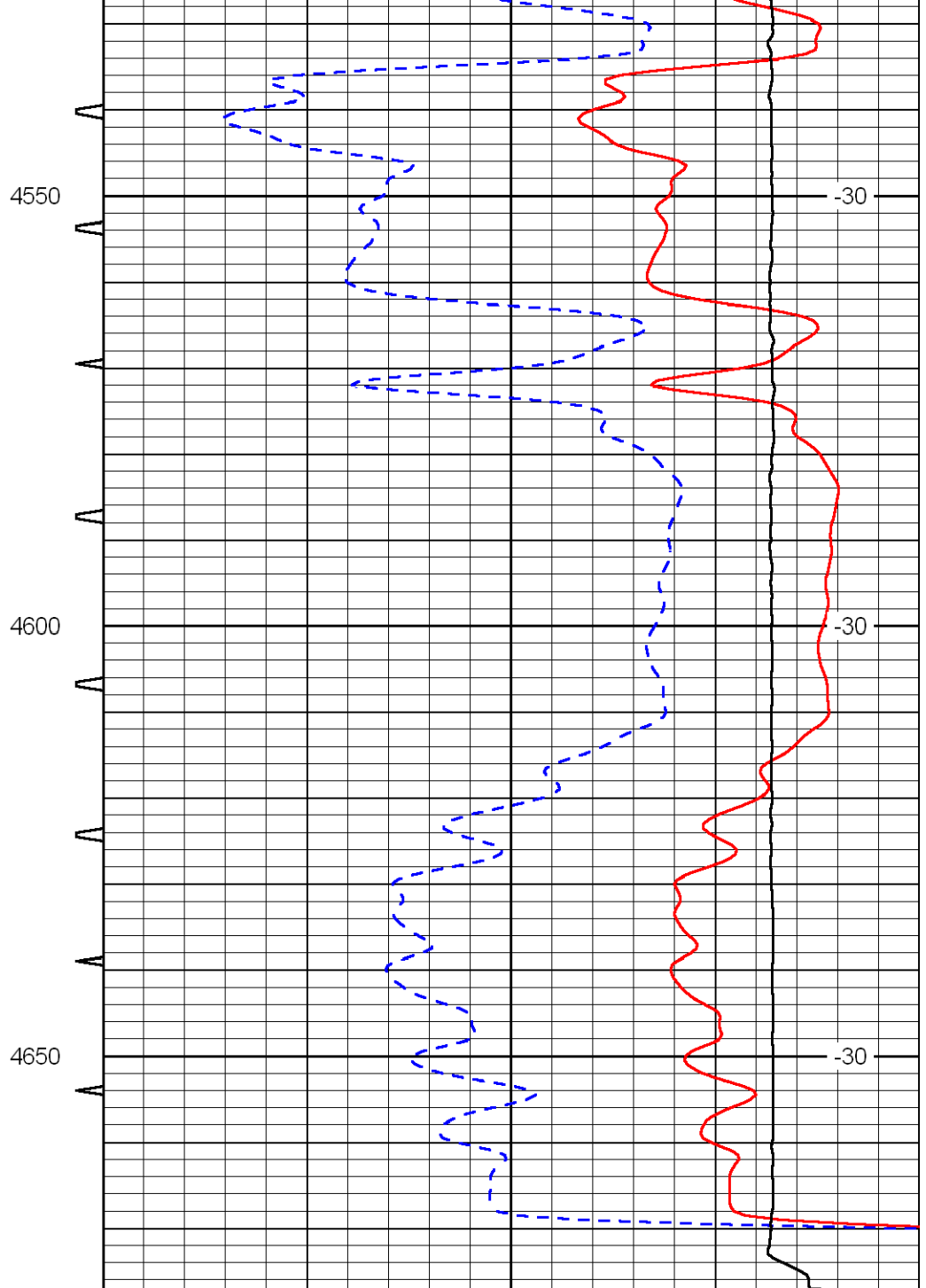
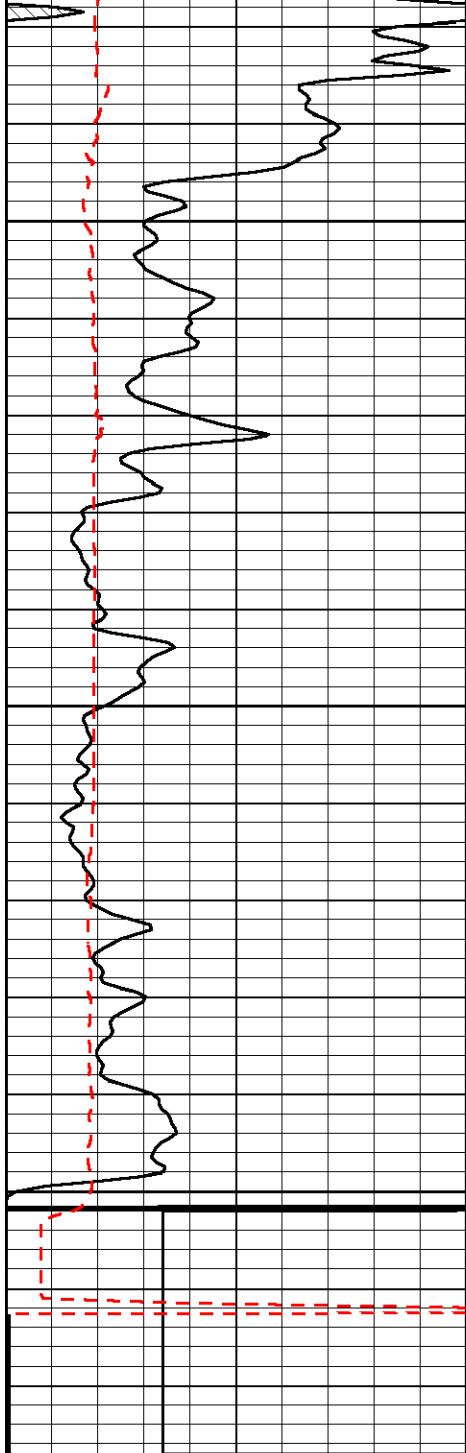












0	Gamma Ray	150	Sonic Int	140	Delta Time (usec/ft)	40
150	Gamma Ray	300	5	0	Sonic Porosity	-10
6	dCAL (GAPI)	16		15000	LTEN (lb)	0
LSPD						