



# Microresistivity Log

DIGITAL LOG (785) 625-3858

API No.	15-101-22253-00-00		
Company	Murfin Drilling Company, Inc.		
Well	Sharp No. 1-3		
Field	Wildcat		
County	Lane	State	Kansas
Location	2293' FNL & 2310' FEL		
Sec: 3	Twp: 18S	Rge: 30W	
Permanent Datum	Ground Level	Elevation 2864	Other Services CNL / CDL DIL / BHCS
Log Measured From	Kelly Bushing	10 Ft. Above Perm. Datum	
Drilling Measured From	Frotkelly Bushing		K.B. 2874 D.F. 2864 G.L. 2864

Date	8/14/2010
Run Number	Two
Depth Driller	4675
Depth Logger	4673
Bottom Logged Interval	4672
Top Log Interval	3550
Casing Driller	8.625 @ 231
Casing Logger	231
Bit Size	7.875
Type Fluid in Hole	Chemical
Salinity, ppm CL	2400
Density / Viscosity	9.3 64
pH / Fluid Loss	11.0 6.0
Source of Sample	Flowline
Rm @ Meas. Temp	.85 @ 75
Rmf @ Meas. Temp	.64 @ 75
Rmc @ Meas. Temp	1.15 @ 75
Source of Rmf / Rmc	Charts
Rm @ BHT	.51 @ 125
Operating Rig Time	4 Hours
Max Rec. Temp. F	125
Equipment Number	17
Location	Hays
Recorded By	R. Barnhart
Witnessed By	Ken LeBlanc
	M. Garrison

<<< Fold Here >>>

All interpretations are opinions based on inferences from electrical or other measurements and we cannot and do not guarantee the accuracy or correctness of any interpretation, and we shall not, except in the case of gross or willful negligence on our part, be liable or responsible for any loss, costs, damages, or expenses incurred or sustained by anyone resulting from any interpretation made by any of our officers, agents or employees. These interpretations are also subject to our general terms and conditions set out in our current Price Schedule.

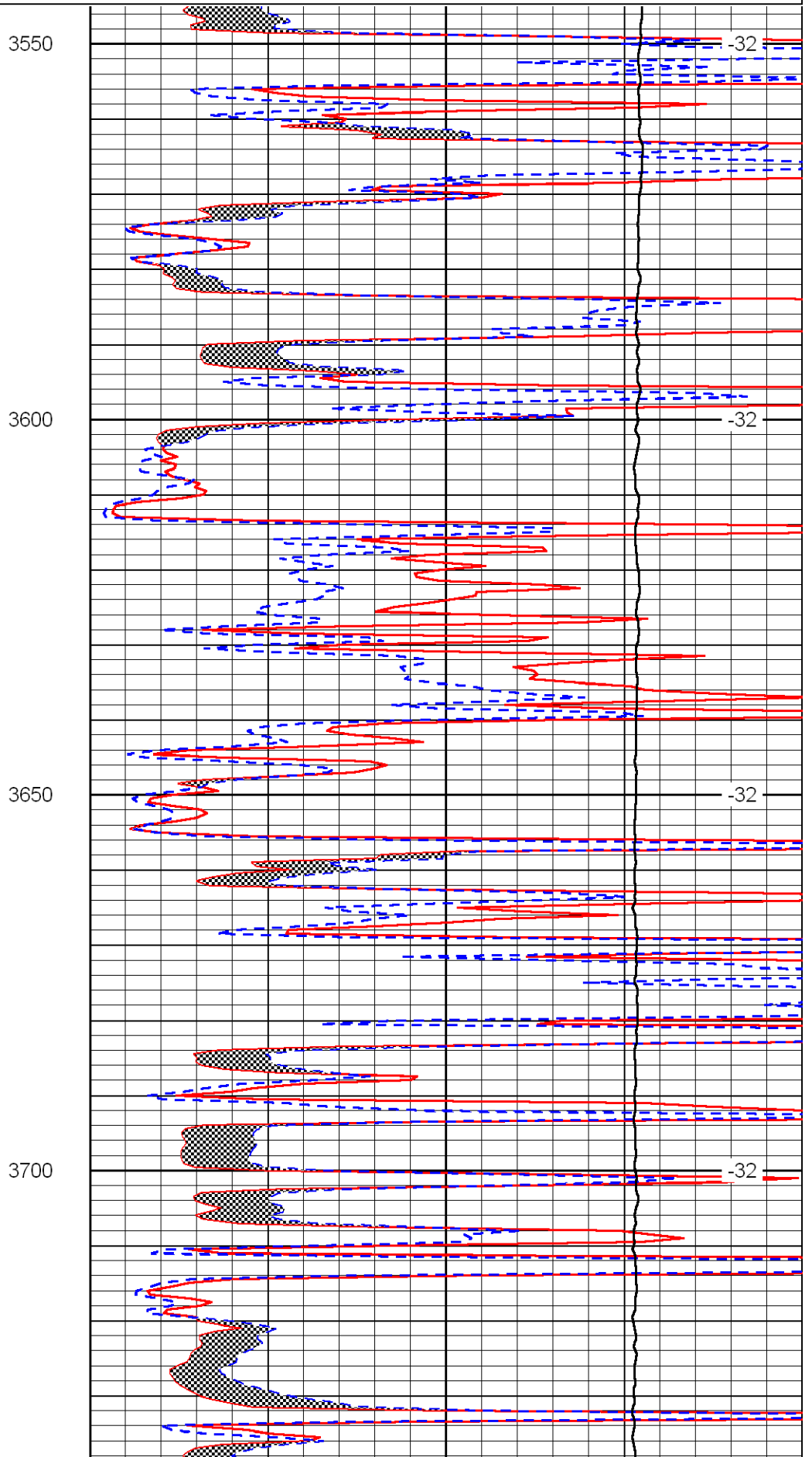
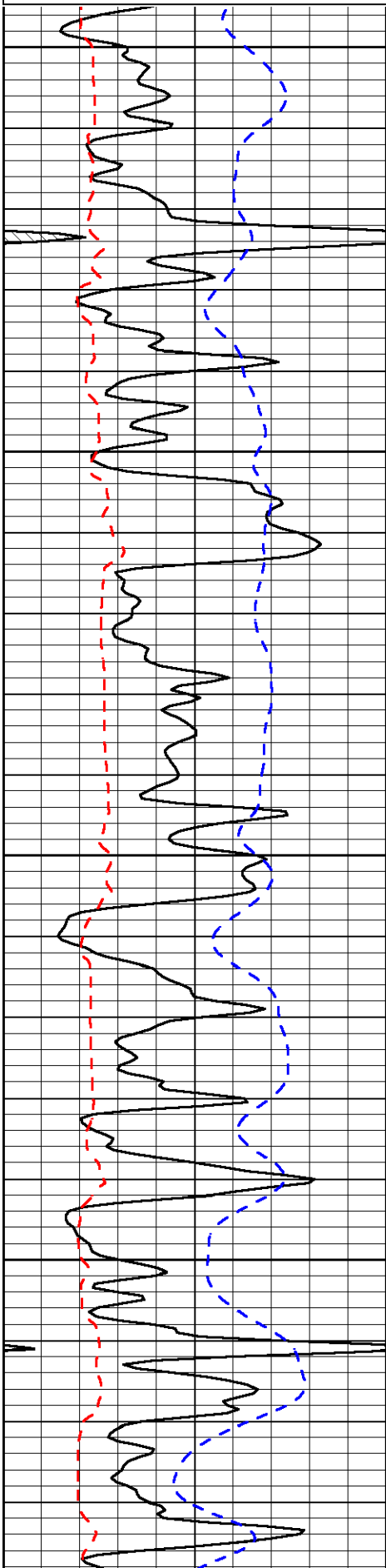
Comments

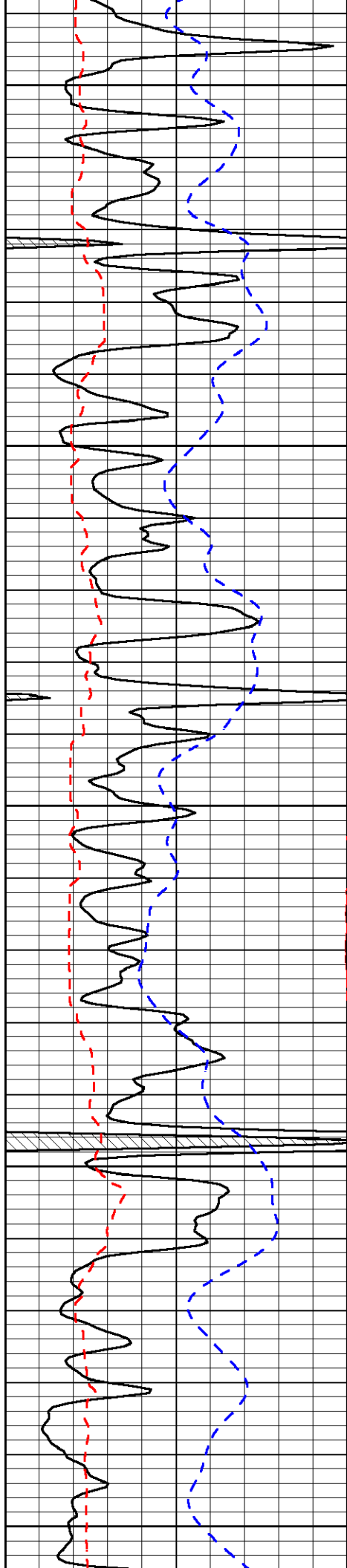
Thank you for using Log-Tech, Inc.  
 (785) 625-3858  
 Dighton, KS  
 8W to Dodge Rd., 3N, 3/4W, 1/2S into

Database File: murfin sharp 1-3hd.db  
 Dataset Pathname: dil/murfstck  
 Presentation Format: micro  
 Dataset Creation: Sat Aug 14 13:44:16 2010  
 Charted by: Depth in Feet scaled 1:240

0	Gamma Ray	150
6	MCAL (GAPI)	16
2.875	Mud Cake (GAPI)	7.875
-200	SP	0

0	Micro Inverse 1 X 1	40
0	Micro Normal 2"	40
10000	Line Weight	0
		LSPD





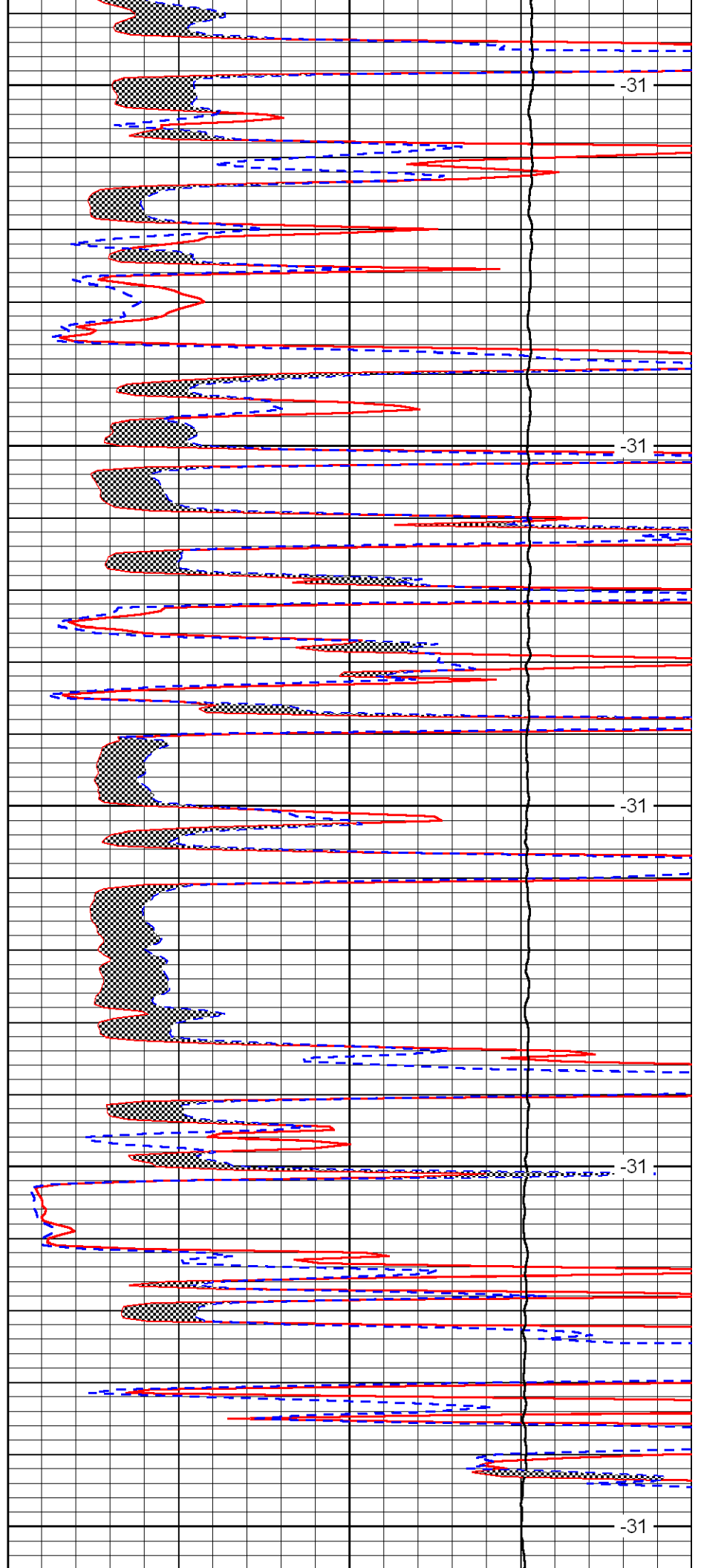
3750

3800

3850

3900

3950



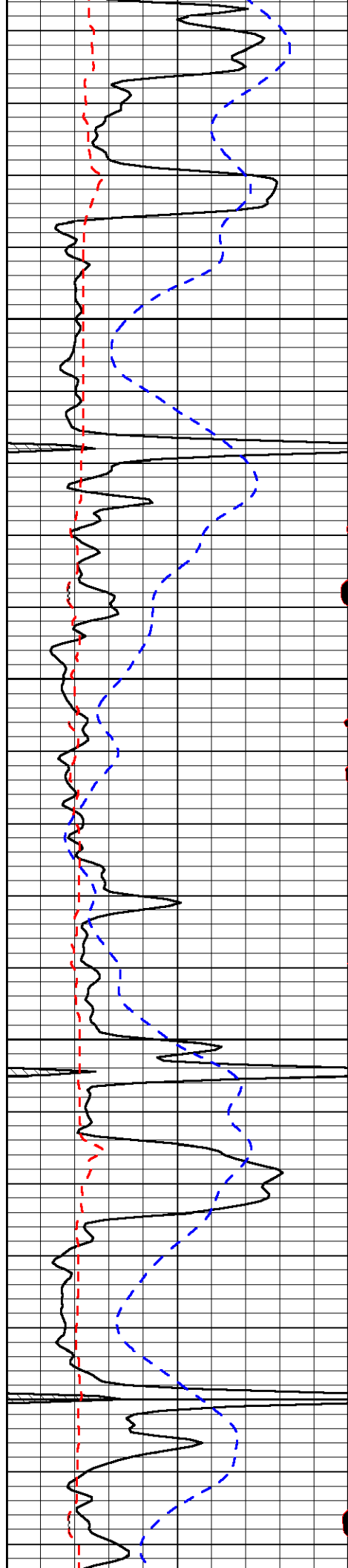
-31

-31

-31

-31

-31

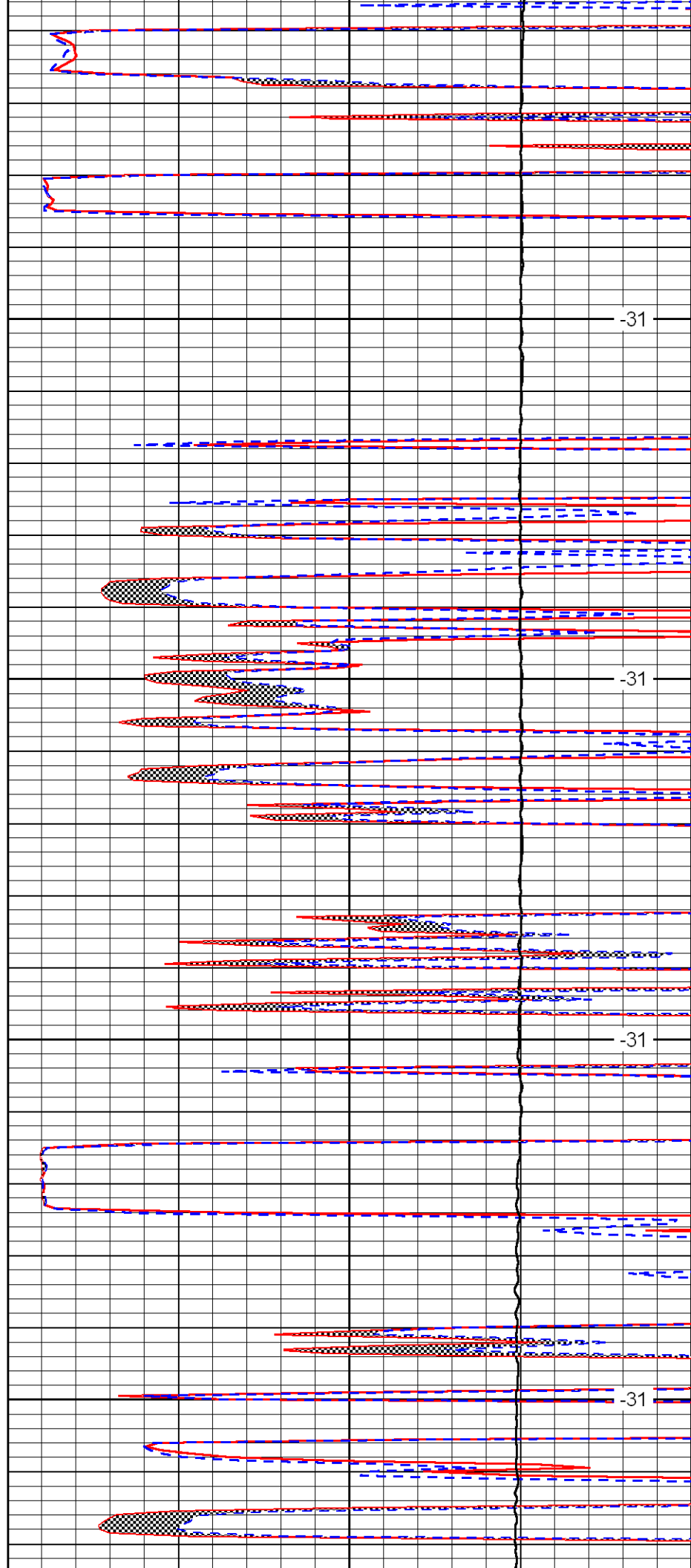


4000

4050

4100

4150

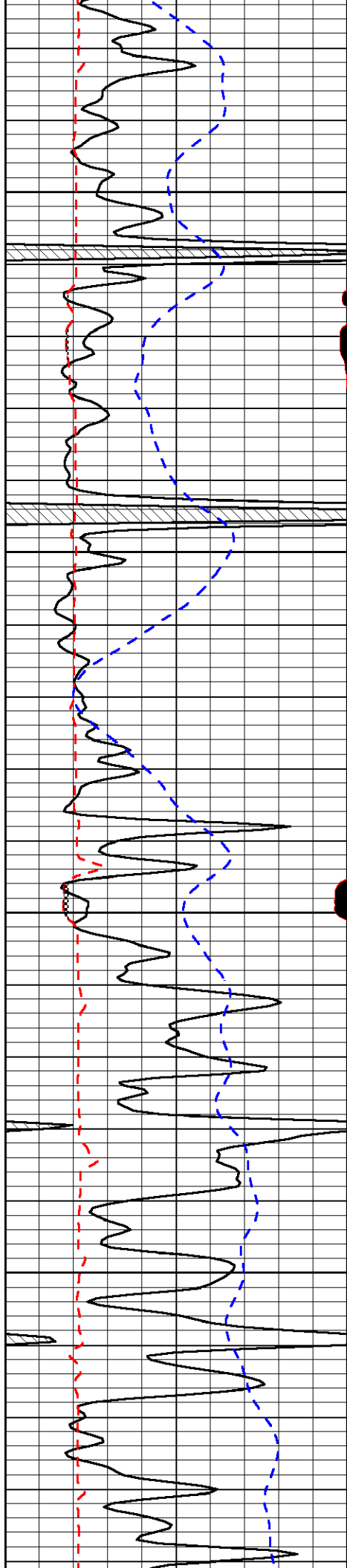


-31

-31

-31

-31

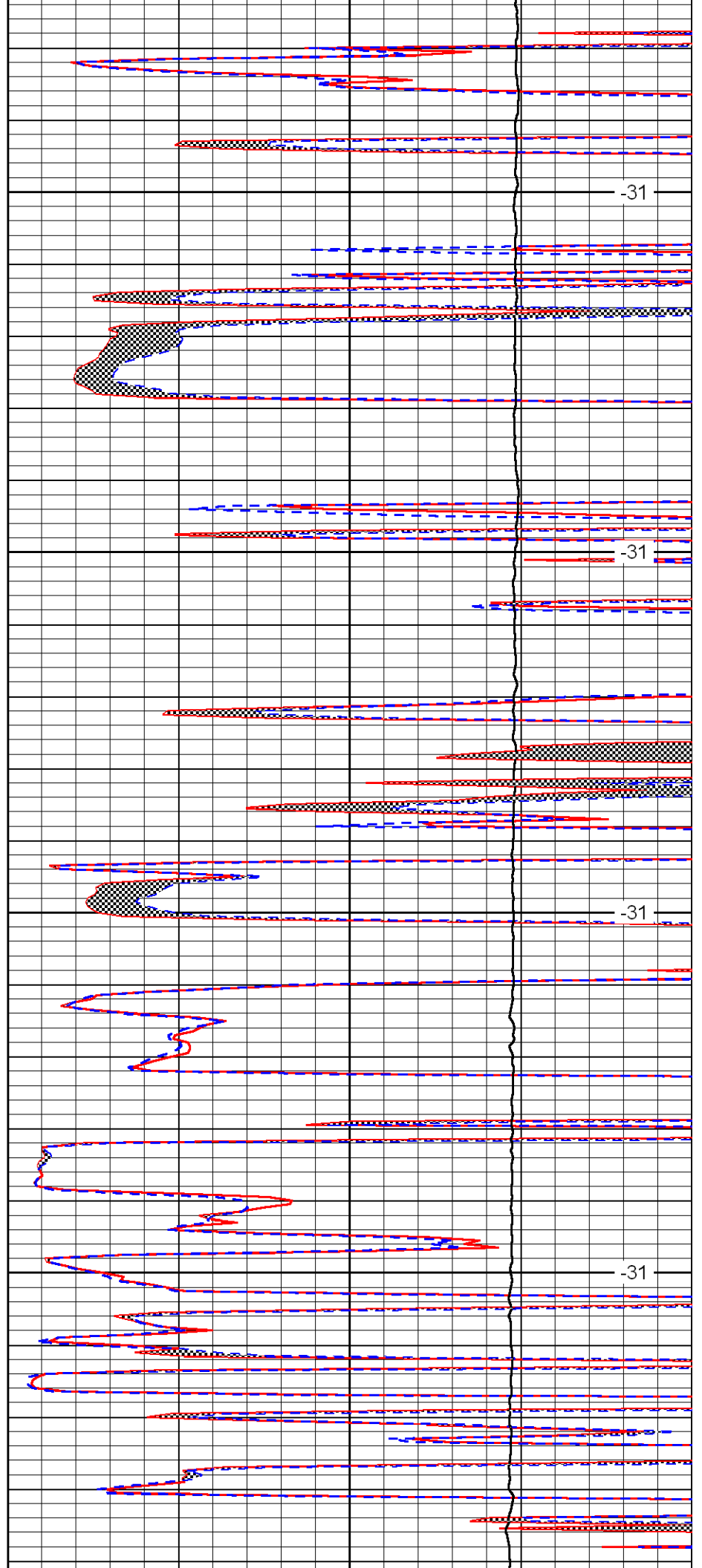


4200

4250

4300

4350

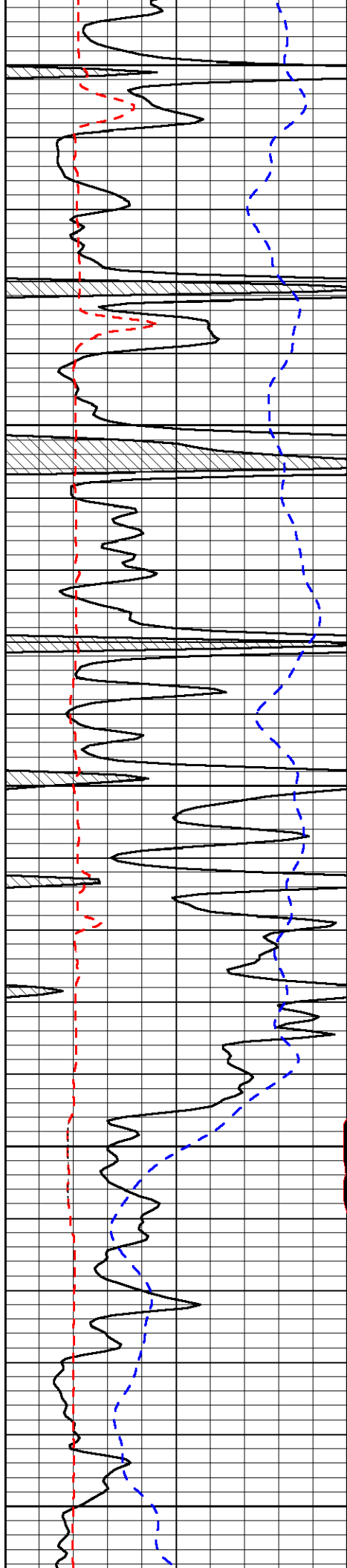


-31

-31

-31

-31



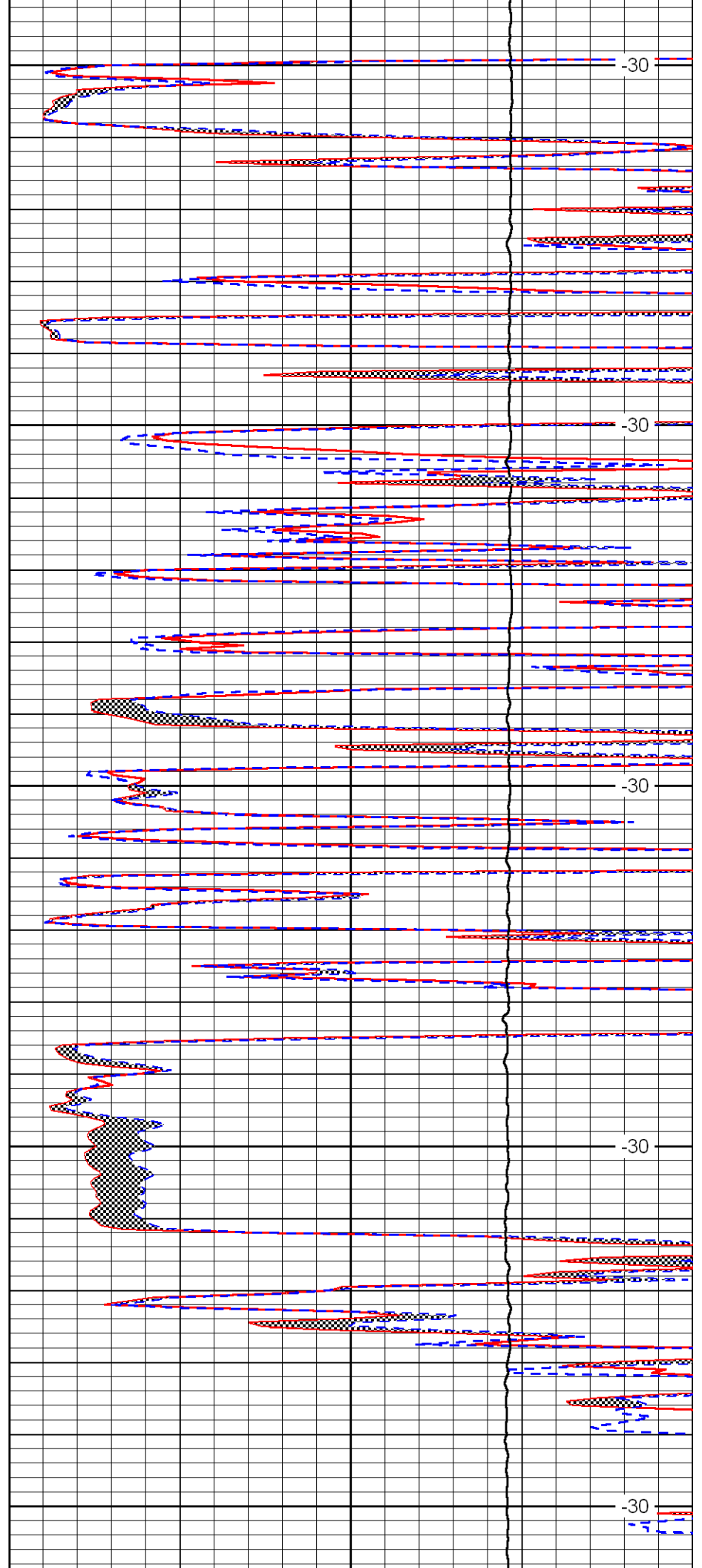
4400

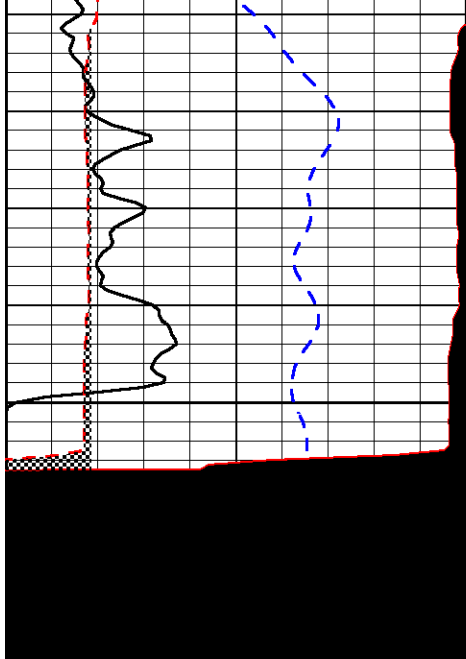
4450

4500

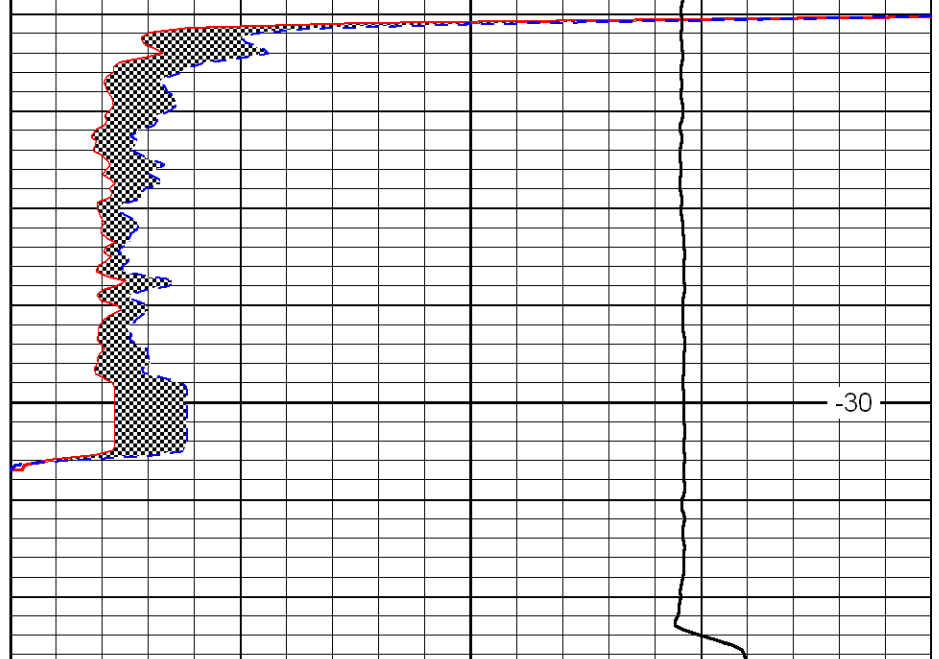
4550

4600





4650



-30

0	Gamma Ray	150
6	MCAL (GAPI)	16
2.875	Mud Cake (GAPI)	7.875
-200	SP	0

0	Micro Inverse 1 X 1	40
0	Micro Normal 2''	40
10000	Line Weight	0

LSPD