



Dual Compensated
Porosity Log

DIGITAL LOG (785) 625-3858

API No. 15-101-22253-00-00

Company **Murfin Drilling Company, Inc.**
 Well **Sharp No. 1-3**
 Field **Wildcat**
 County **Lane** State **Kansas**
 Location **2293' FNL & 2310' FEL**

Sec: **3** Twp: **18S** Rge: **30W**

Permanant Datum **Ground Level** Elevation **2864**
 Log Measured From **Kelly Bushing** 10 Ft. Above Perm. Datum
 Drilling Measured From **Kelly Bushing**

Other Services
DIL
MEL / BHCS

Elevation
K.B. 2874
D.F. 2864
G.L. 2864

Date	8/14/2010	
Run Number	Two	
Type Log	CNL / CDL	
Depth Driller	4675	
Depth Logger	4673	
Bottom Logged Interval	4652	
Top Logged Interval	3550	
Type Fluid In Hole	Chemical	
Salinity, PPM CL	2400	
Density	9.3	
Level	Full	
Max. Rec. Temp. F	125	
Operating Rig Time	4 Hours	
Equipment -- Location	17 Hays	
Recorded By	R. Barnhart	
Witnessed By	Ken LeBlanc	

Borehole Record		Casing Record					
Run No	Bit	From	To	Size	Wgt. 23#	From	To
One	12.25	00	231	8.625	23#	00	231
Two	7.875	231	TD				

<<< Fold Here >>>

All interpretations are opinions based on inferences from electrical or other measurements and we cannot and do not guarantee the accuracy or correctness of any interpretation, and we shall not, except in the case of gross or willful negligence on our part, be liable or responsible for any loss, costs, damages, or expenses incurred or sustained by anyone resulting from any interpretation made by any of our officers, agents or employees. These interpretations are also subject to our general terms and conditions set out in our current Price Schedule.

Comments

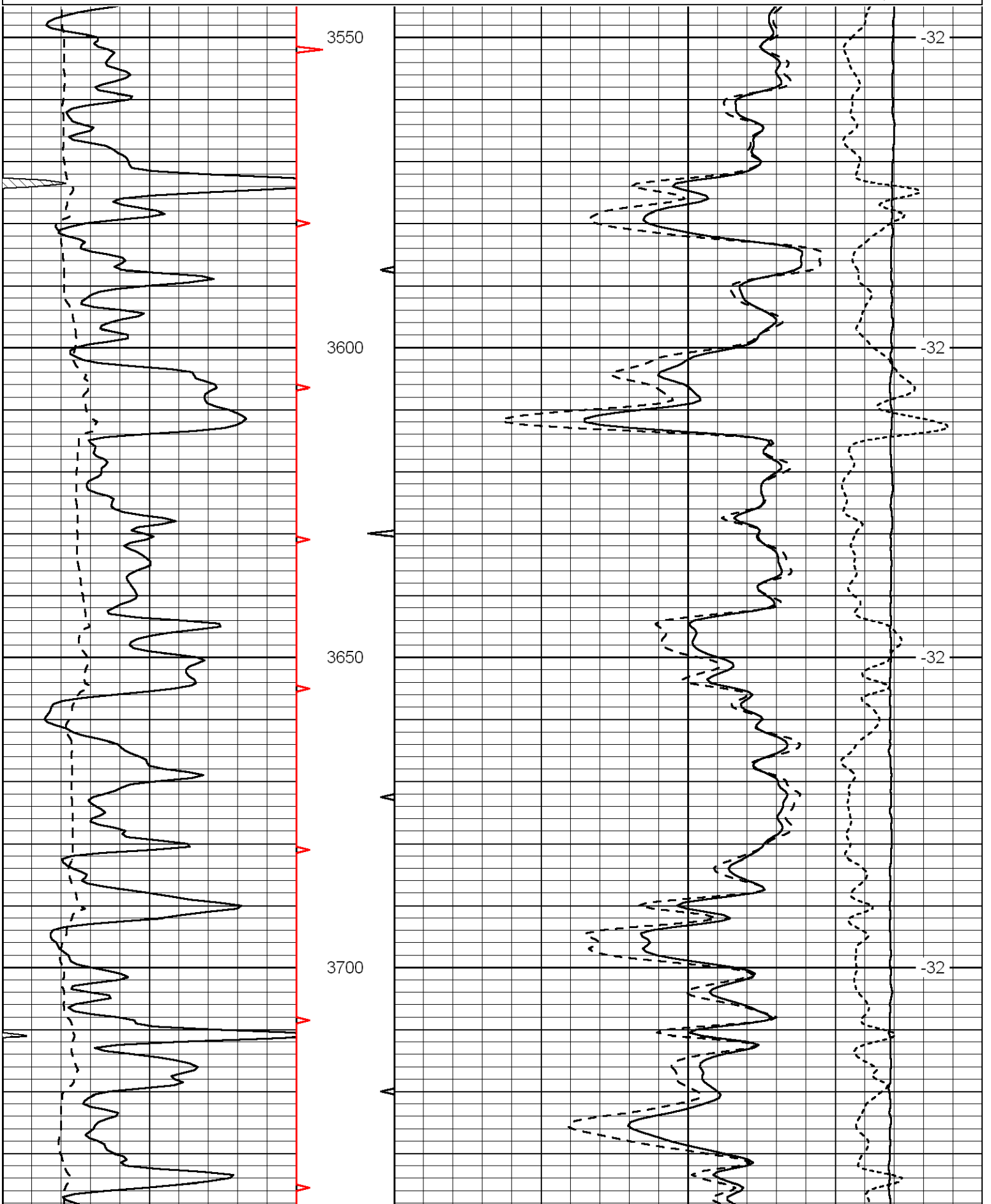
Thank you for using Log-Tech, Inc.
 (785) 625-3858

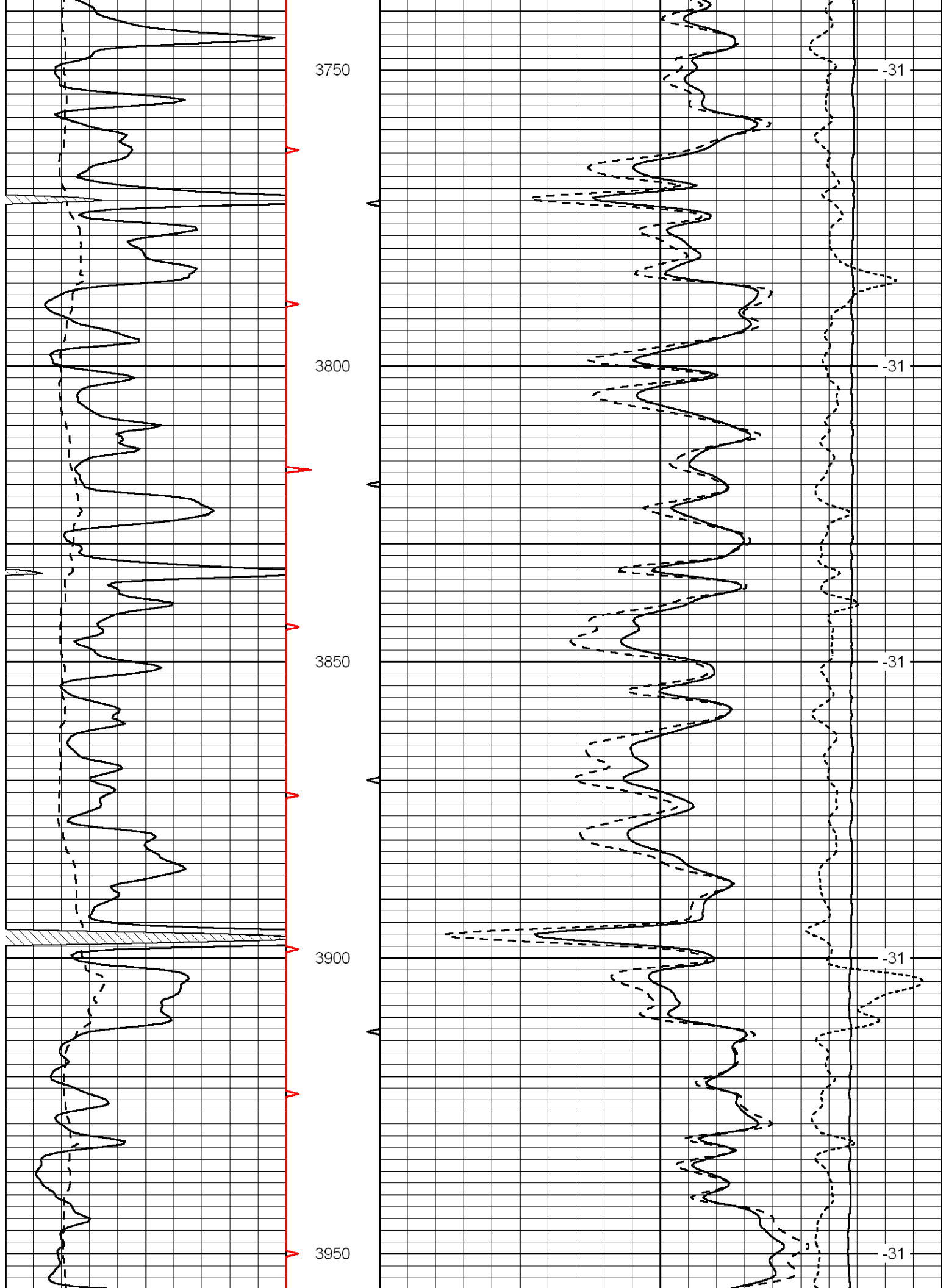
Dighton, KS
 8W to Dodge Rd., 3N, 3/4W, 1/2S into

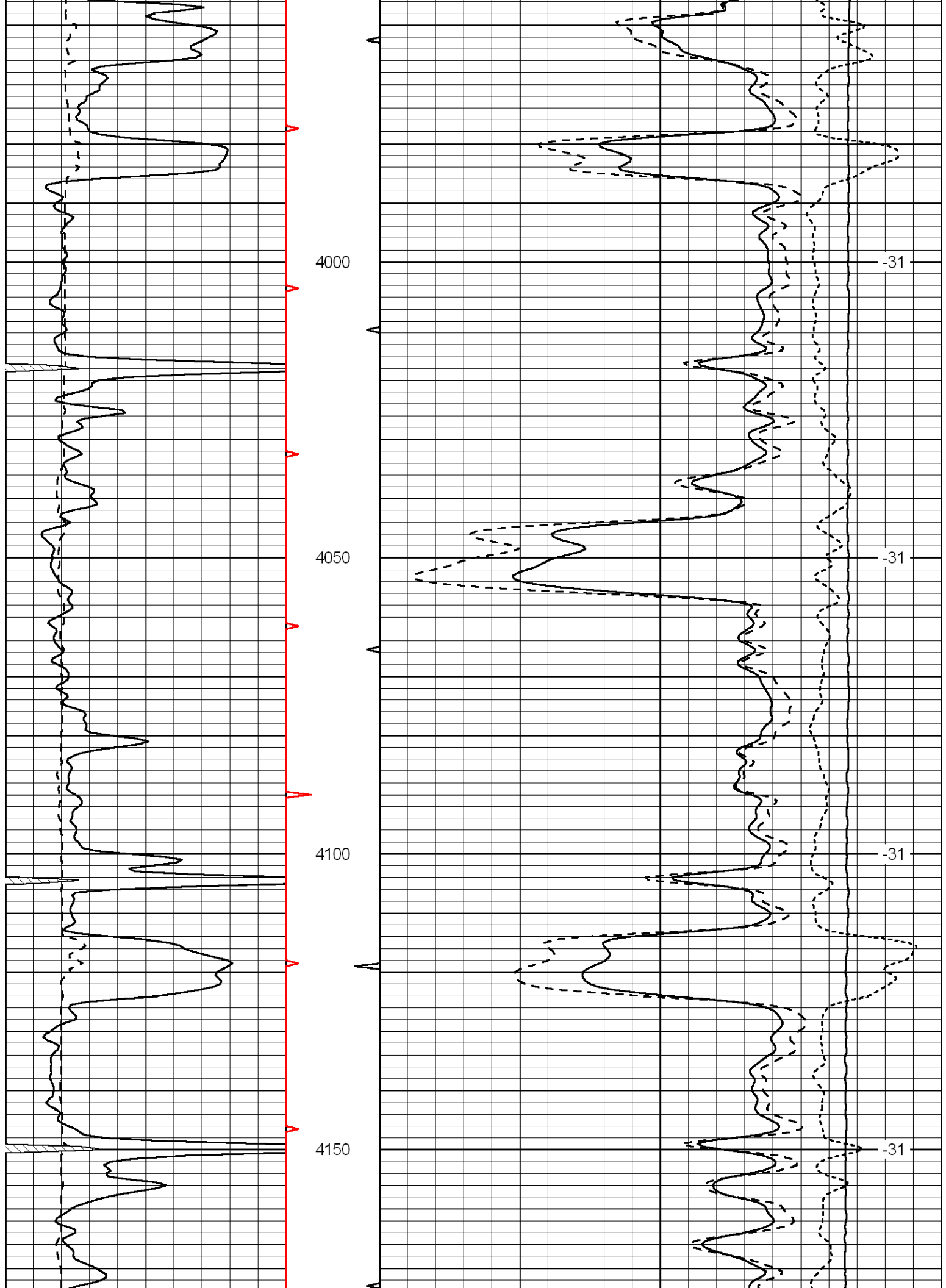
Database File: murfin sharp 1-3hd.db
 Dataset Pathname: dil/murfstck
 Presentation Format: cdl
 Dataset Creation: Sat Aug 14 13:44:16 2010
 Charted by: Depth in Feet scaled 1:240

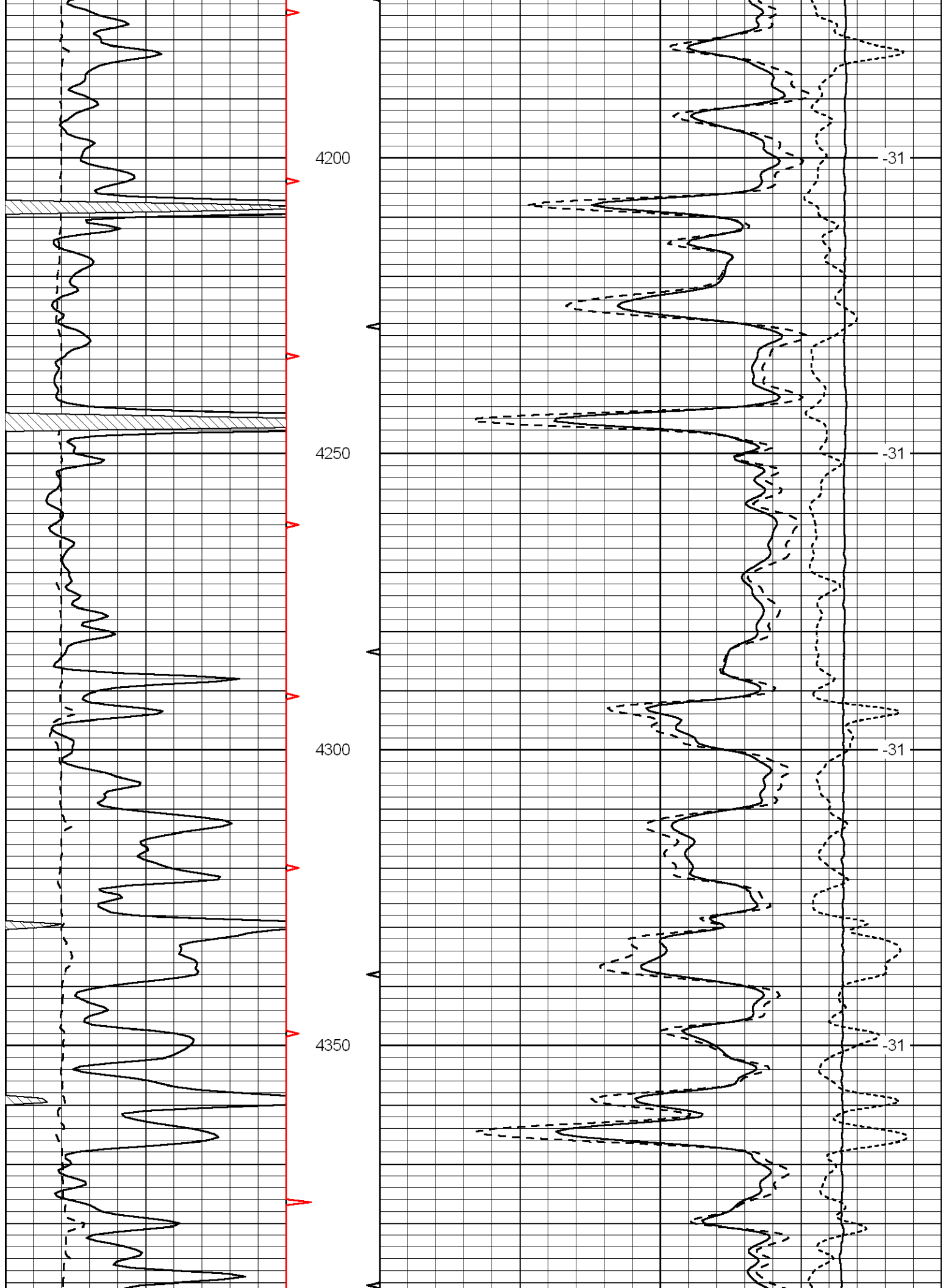
0 Gamma Ray 150
6 Caliper (GAPI) 16

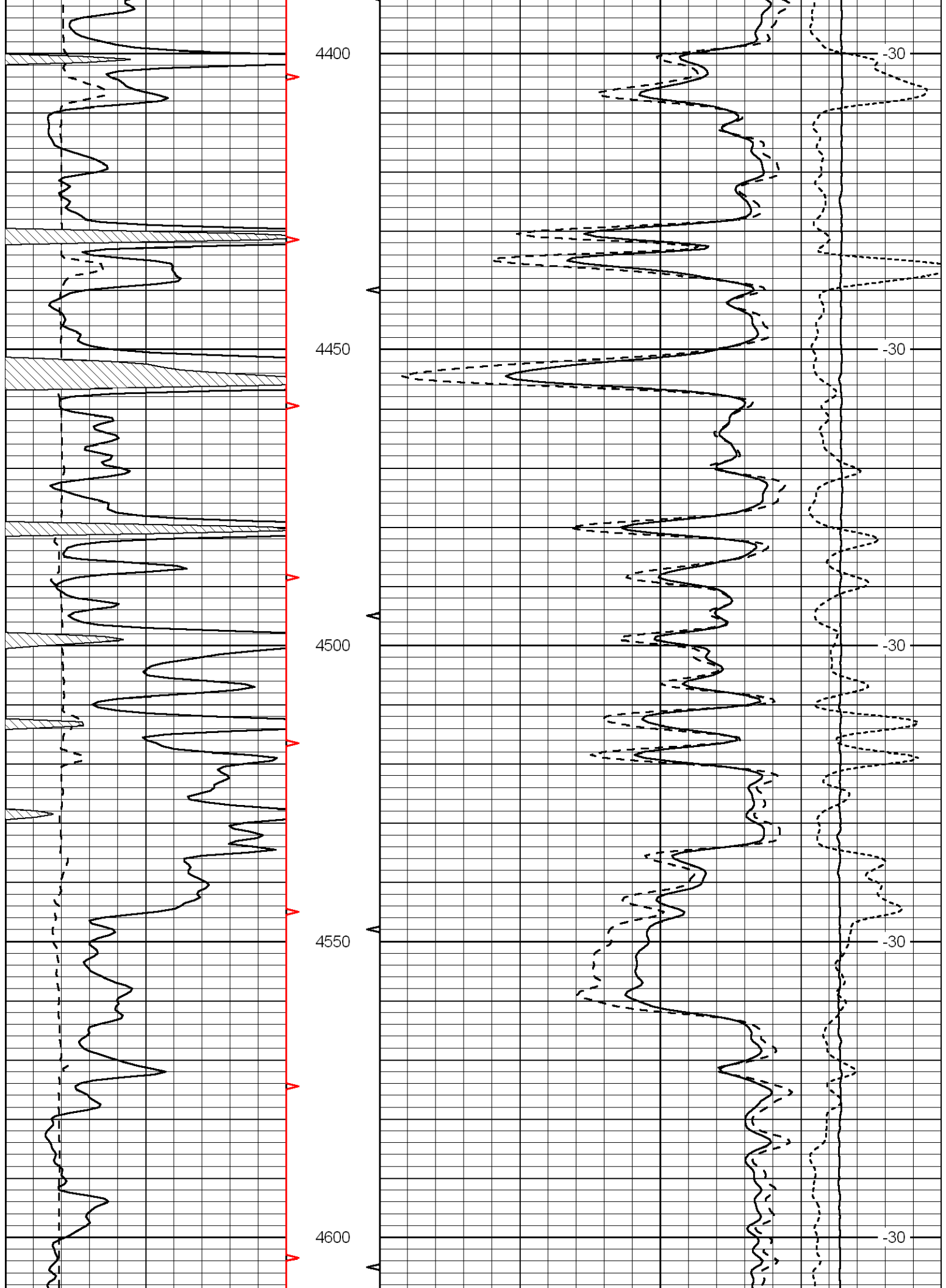
30 Compensated Density -10
2 Bulk Density 3
15000 Line Tension 0
-0.25 Correction 0.25
LSPD

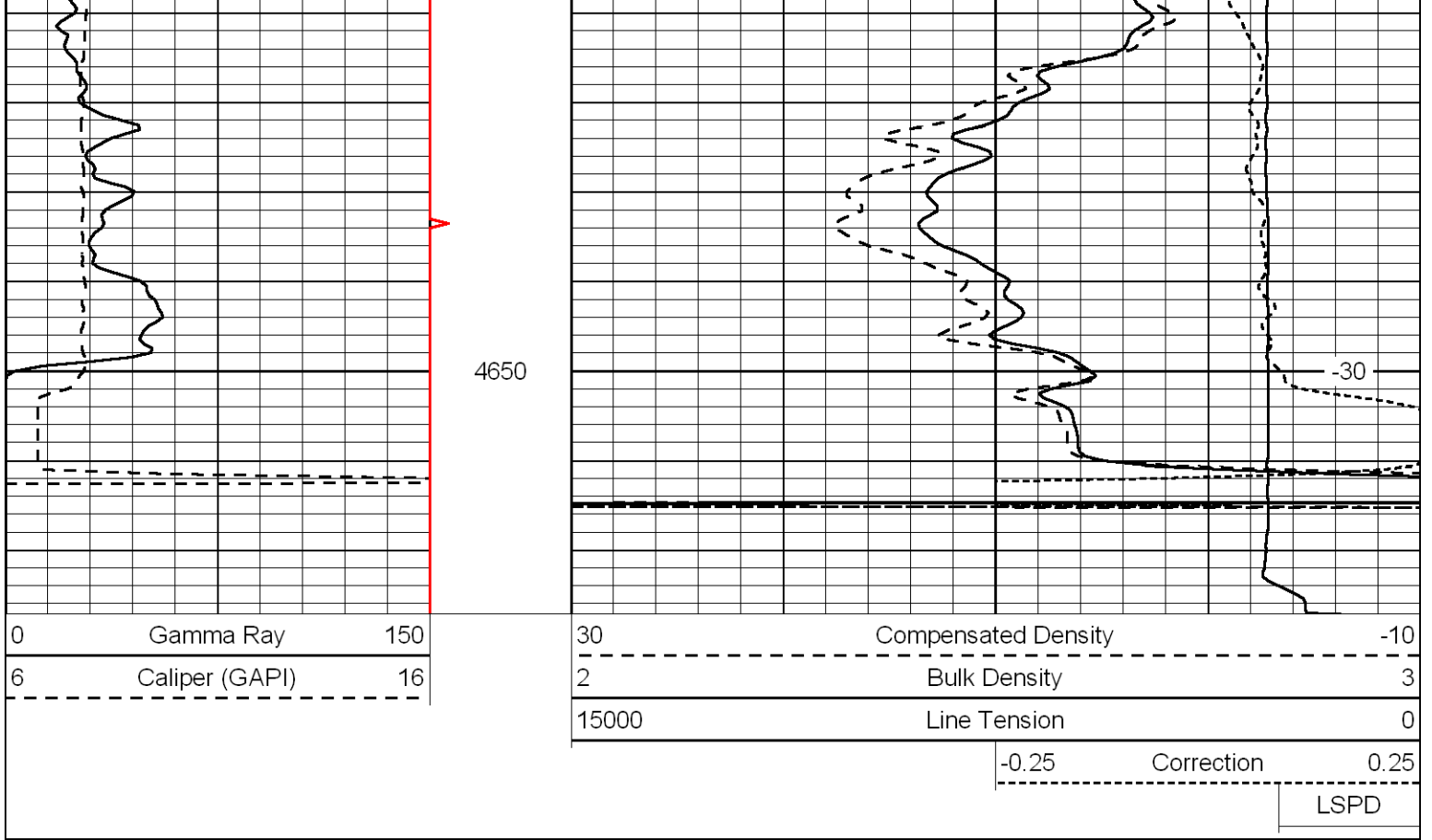












Database File: murfin sharp 1-3hd.db
 Dataset Pathname: dil/murfstck
 Presentation Format: cndlspec
 Dataset Creation: Sat Aug 14 13:44:16 2010
 Charted by: Depth in Feet scaled 1:240

