



DIGITAL LOG
(785) 625-3858

Dual Induction Log

API No.	15-135-24,956-00-00		
Company	American Warrior, Inc.		
Well	Moore No. 5-1		
Field	Wildcat		
County	Ness	State	Kansas
Location	2020' FNL & 2090' FWL		
Sec: 1	Twp: 19 S	Rge: 22 W	Other Services CNL/CDL
Permanent Datum	Ground Level	Elevation 2133	Elevation
Log Measured From	Kelly Bushing	6 Ft. Above Perm. Datum	K.B. 2139
Drilling Measured From	Kelly Bushing		D.F. 2133

Date	6/15/2010
Run Number	One
Depth Driller	4257
Depth Logger	4257
Bottom Logged Interval	4256
Top Log Interval	1350
Casing Driller	8.625 @ 1404
Casing Logger	1398
Bit Size	7.875
Type Fluid in Hole	Chemical
Salinity, ppm CL	5500
Density / Viscosity	9.1 61
pH / Fluid Loss	10.5 8.0
Source of Sample	Flowline
Rm @ Meas. Temp	.55 @ 70
Rmf @ Meas. Temp	.41 @ 70
Rmc @ Meas. Temp	.74 @ 70
Source of Rmf / Rmc	Charts
Rm @ BHT	.32 @ 121
Operating Rig Time	3 Hours
Max Rec. Temp. F	121
Equipment Number	4
Location	Hays
Recorded By	K. Bange
Witnessed By	Jason Alm

<<< Fold Here >>>

All interpretations are opinions based on inferences from electrical or other measurements and we cannot and do not guarantee the accuracy or correctness of any interpretation, and we shall not, except in the case of gross or willful negligence on our part, be liable or responsible for any loss, costs, damages, or expenses incurred or sustained by anyone resulting from any interpretation made by any of our officers, agents or employees. These interpretations are also subject to our general terms and conditions set out in our current Price Schedule.

Comments

Thank you for using Log-Tech, Inc.
(785) 625-3858

Bazine, 3/4 S, W into (through cattle guard), follow lease road 3/4 mile

Database File: c:\warrior\data\amwar_ moore no. 5-1\amwarrhd.db
 Dataset Pathname: dil/amwarr2in
 Presentation Format: dil2in
 Dataset Creation: Tue Jun 15 02:26:06 2010
 Charted by: Depth in Feet scaled 1:600

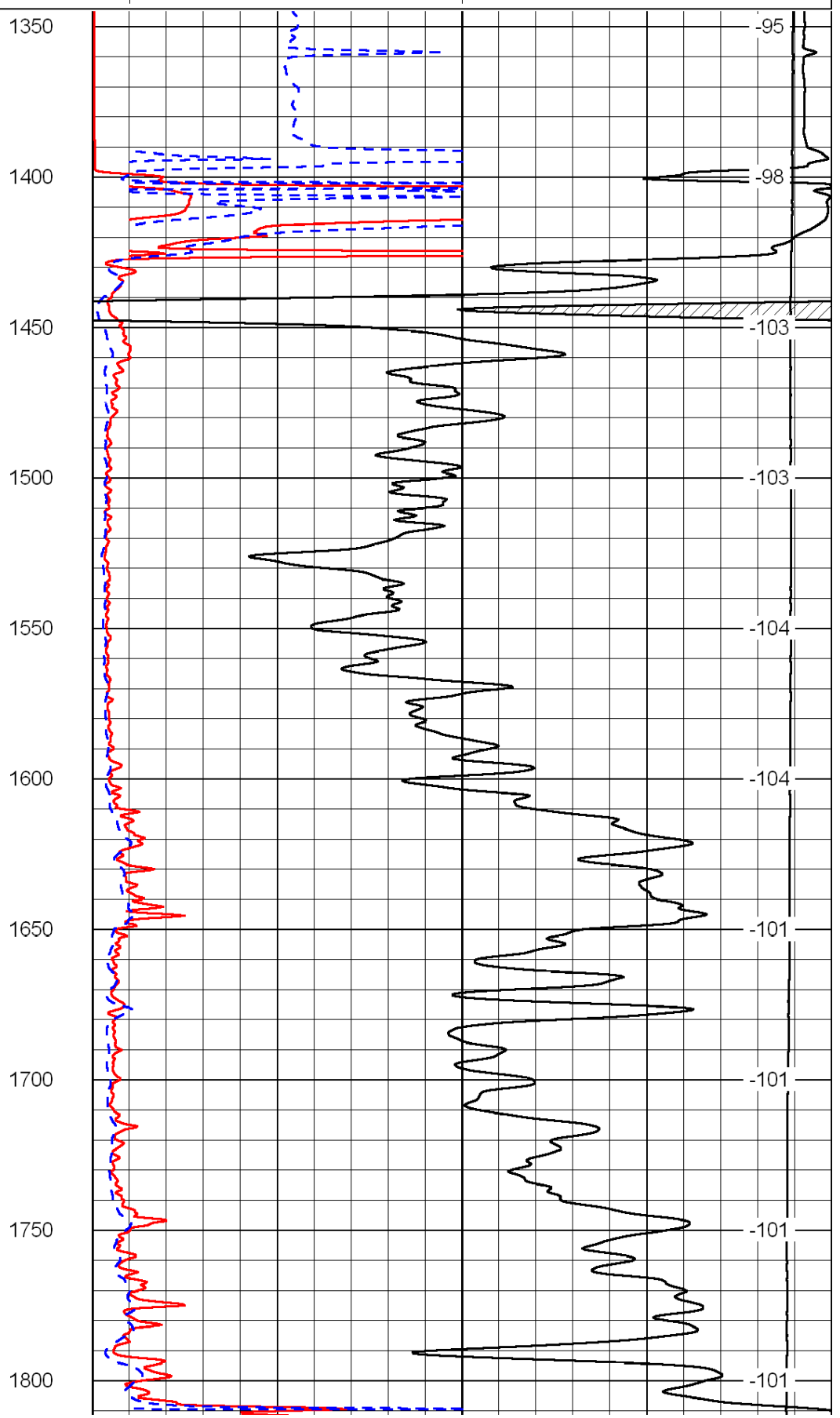
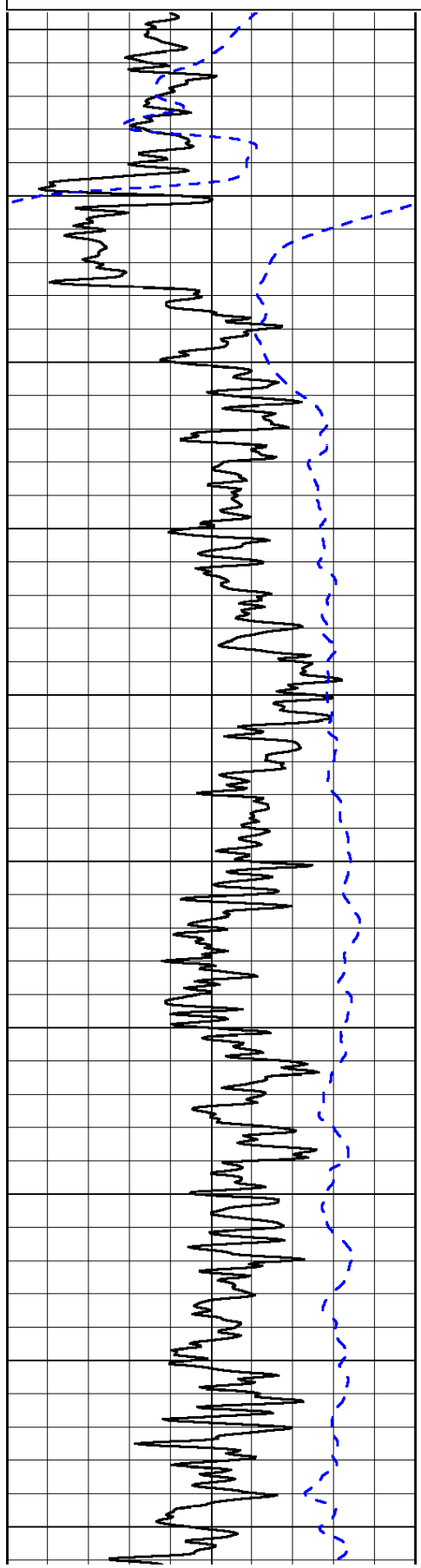
0	Gamma Ray	150
-200	SP (mV)	0

0	Shallow Resistivity	50
0	Deep Resistivity	50

LSPD

1000	Conductivity	0
15000	Line Tension	0

50	Shallow Resistivity	500
50	Deep Resistivity	500



1350 -95

1400 -98

1450 -103

1500 -103

1550 -104

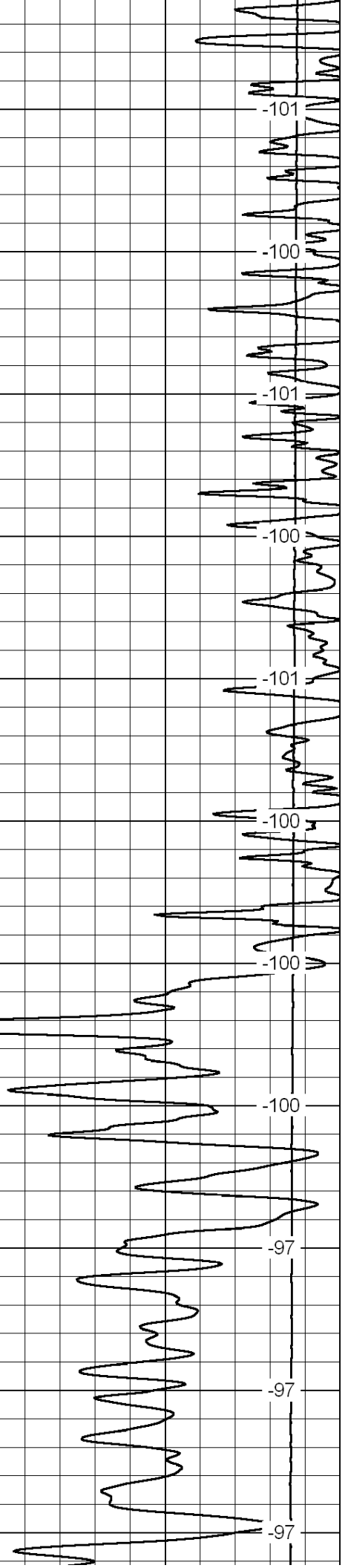
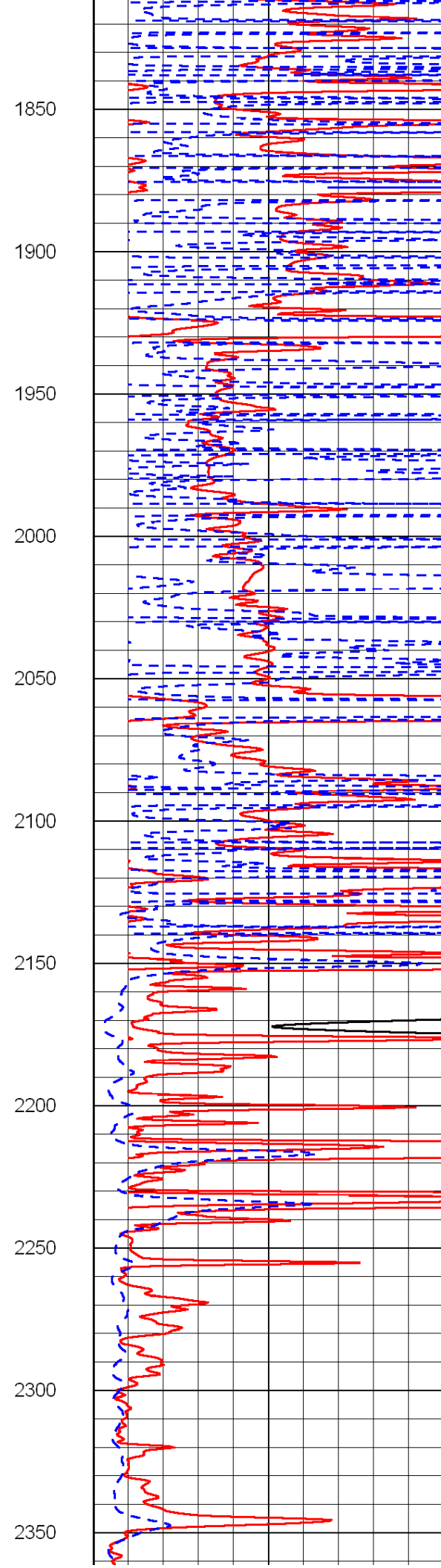
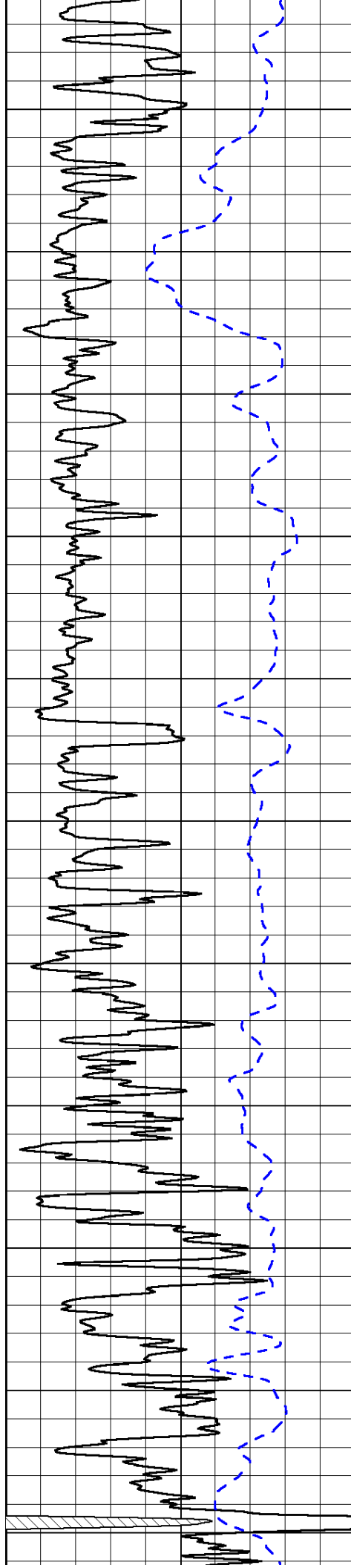
1600 -104

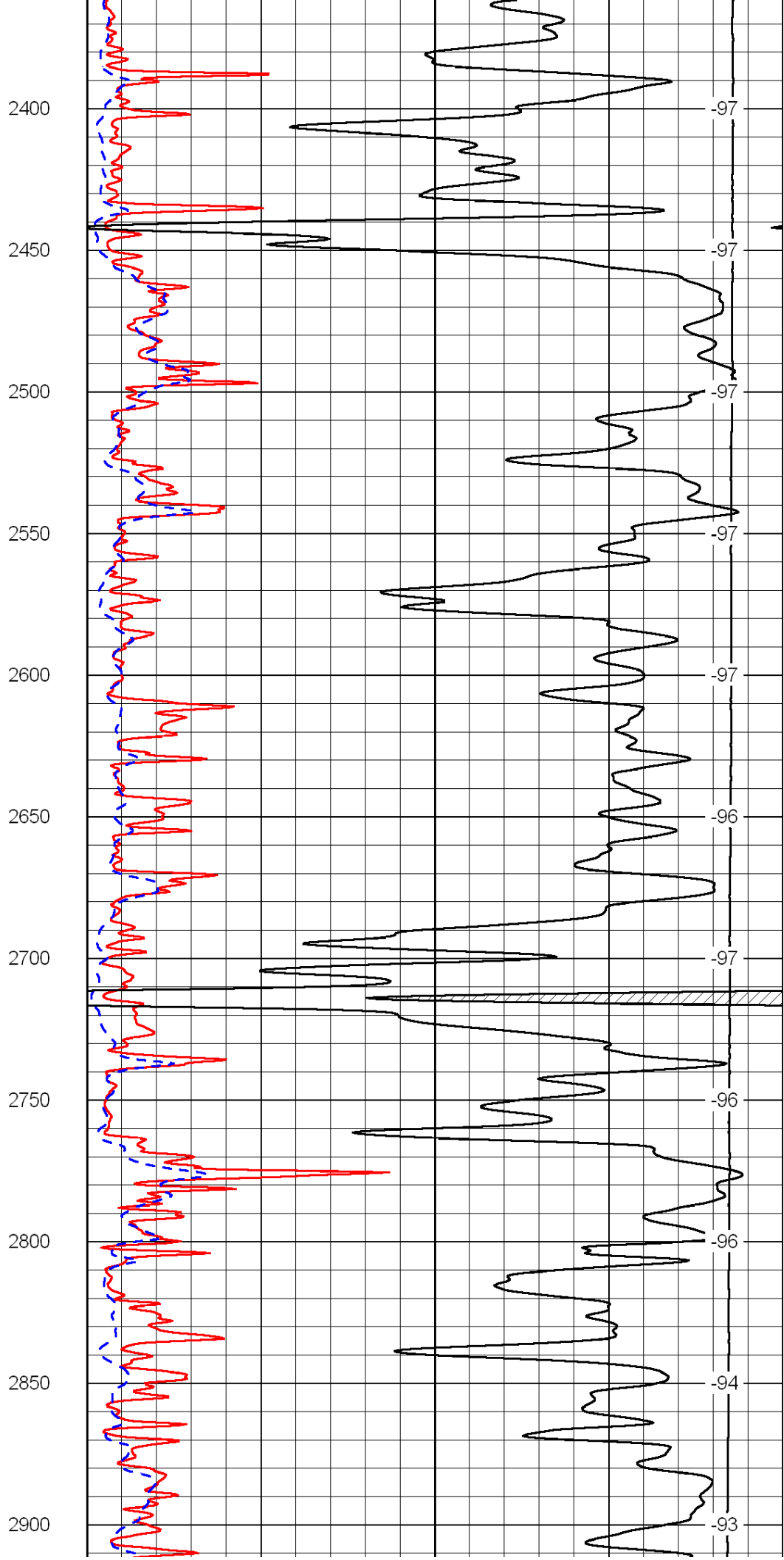
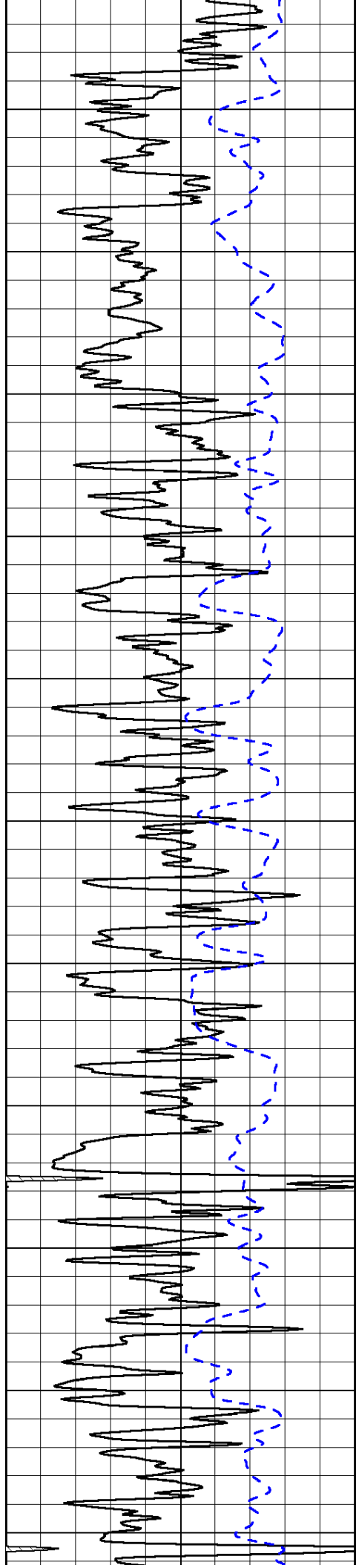
1650 -101

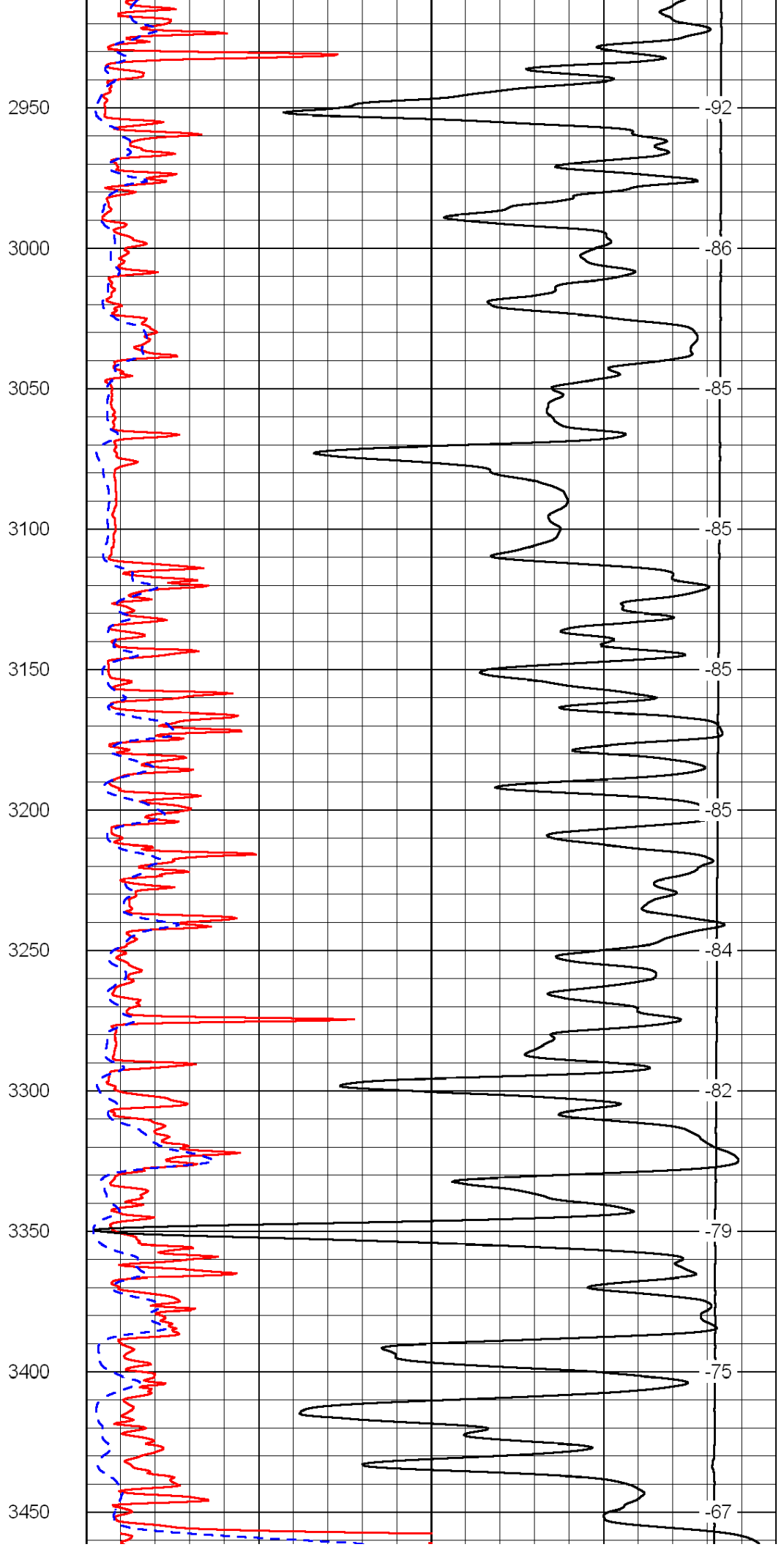
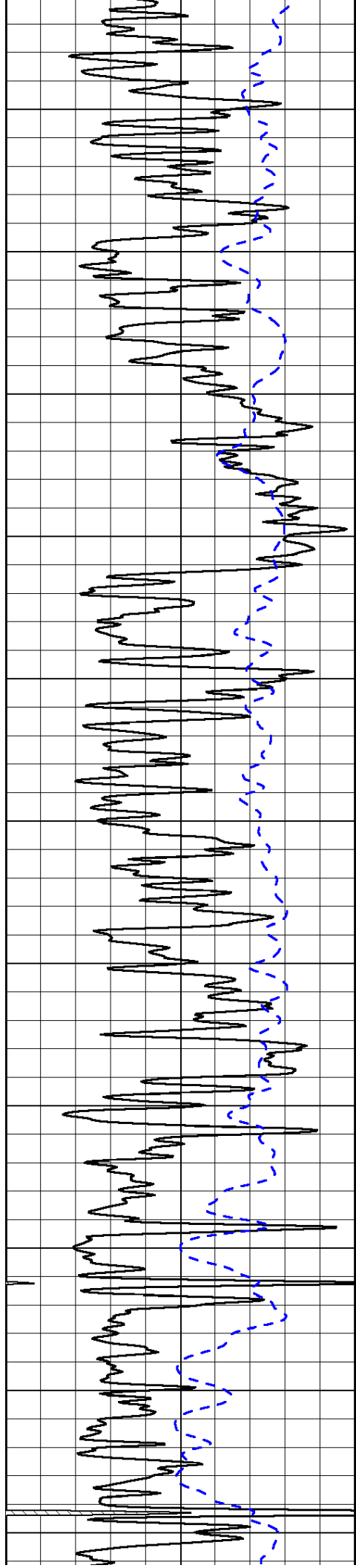
1700 -101

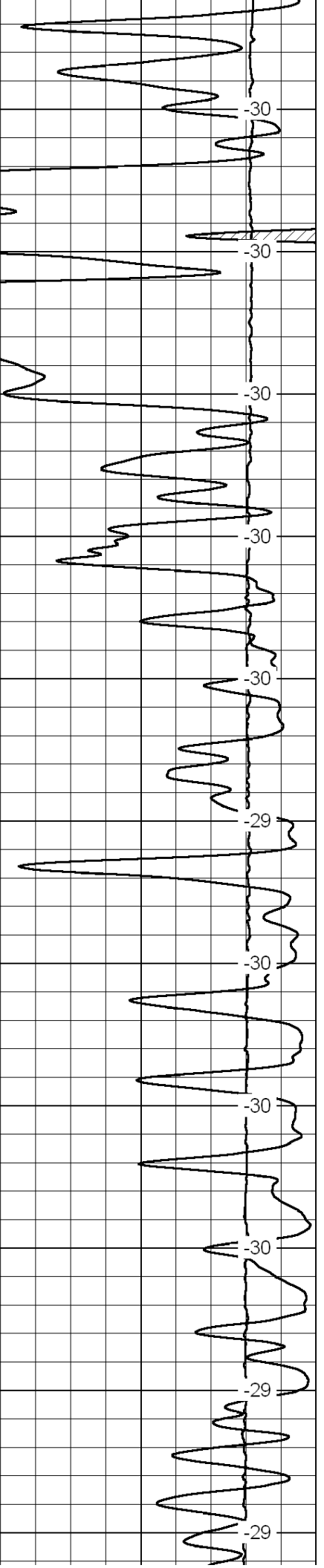
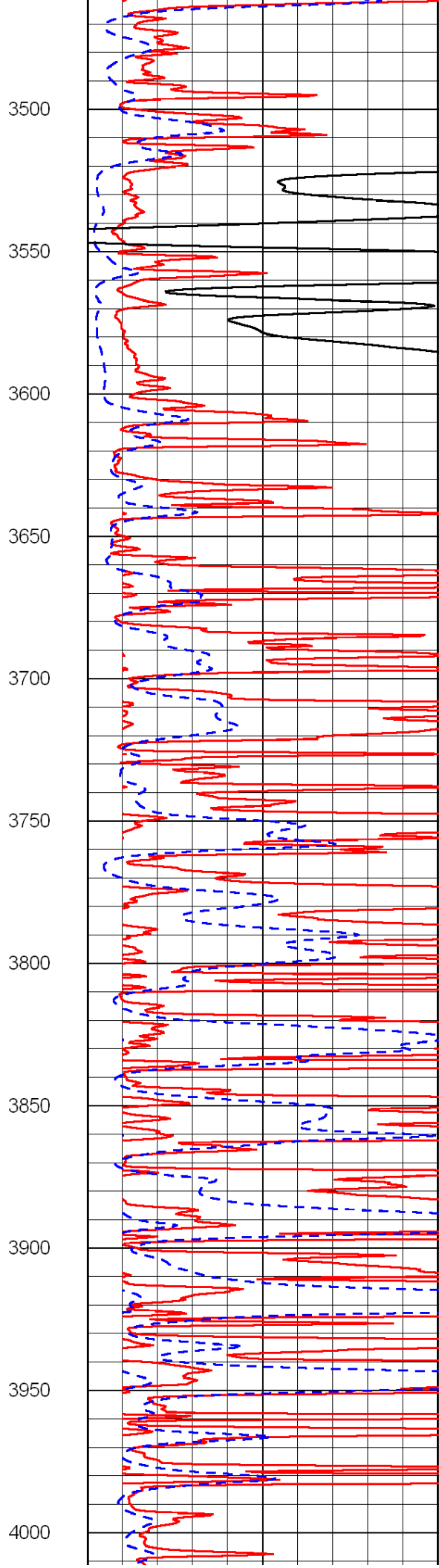
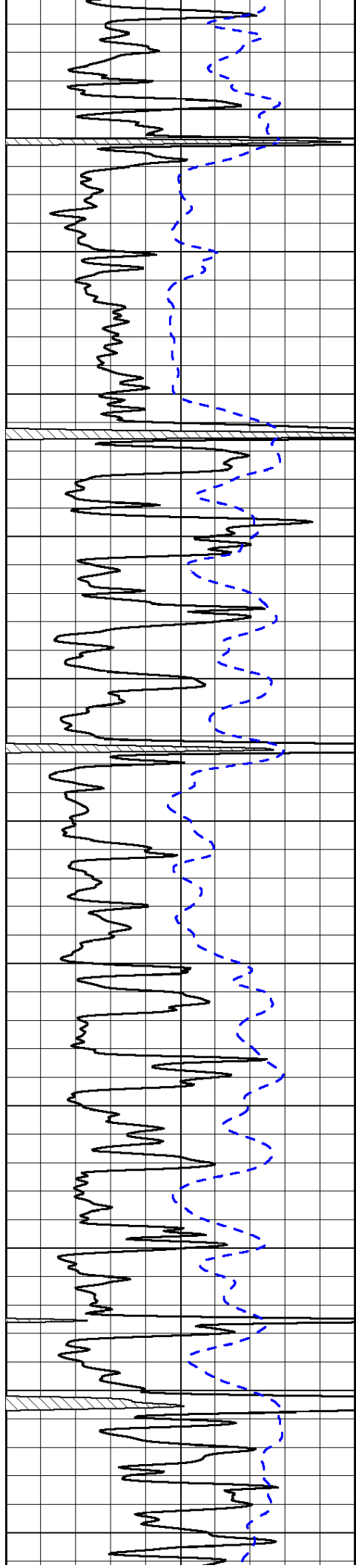
1750 -101

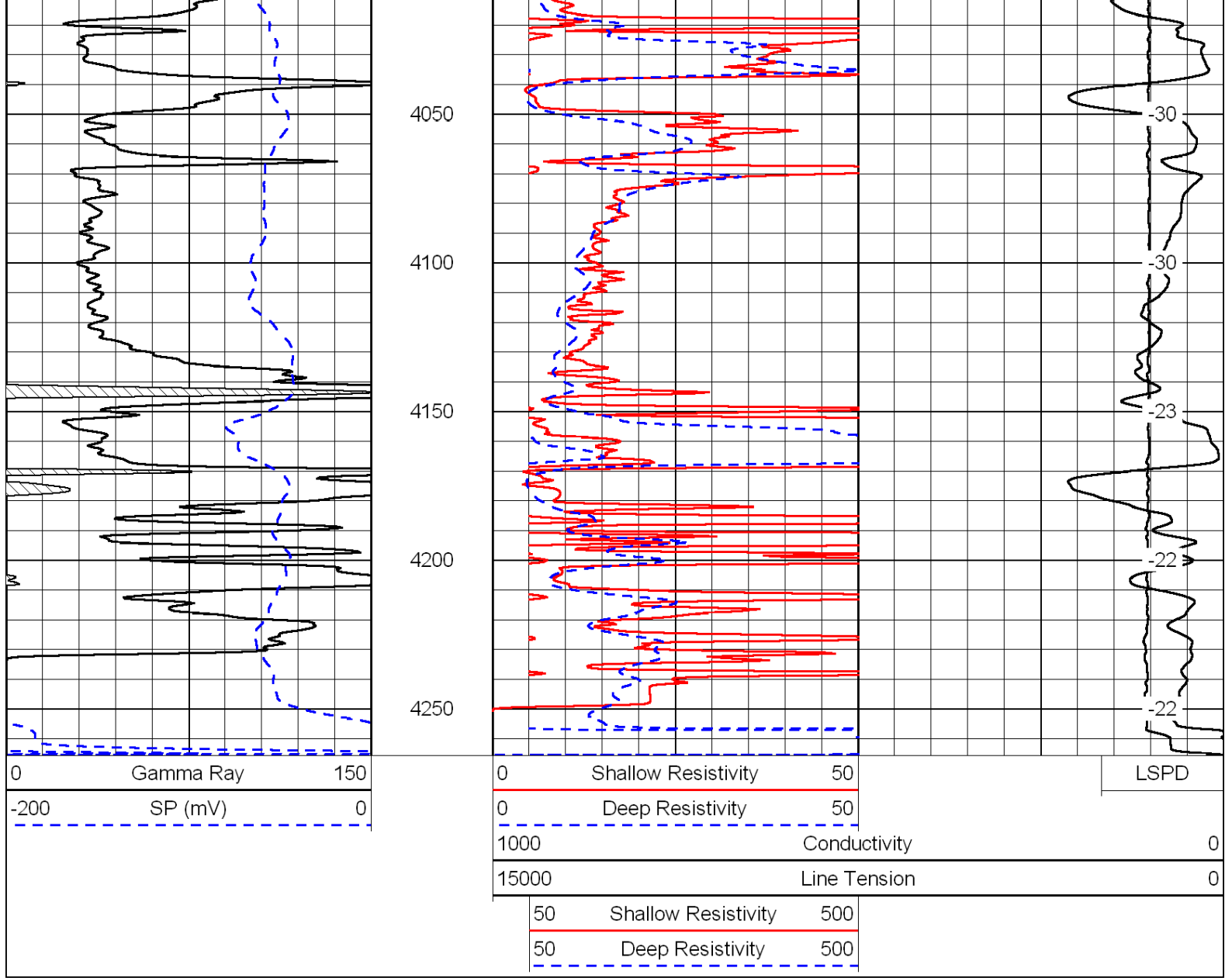
1800 -101



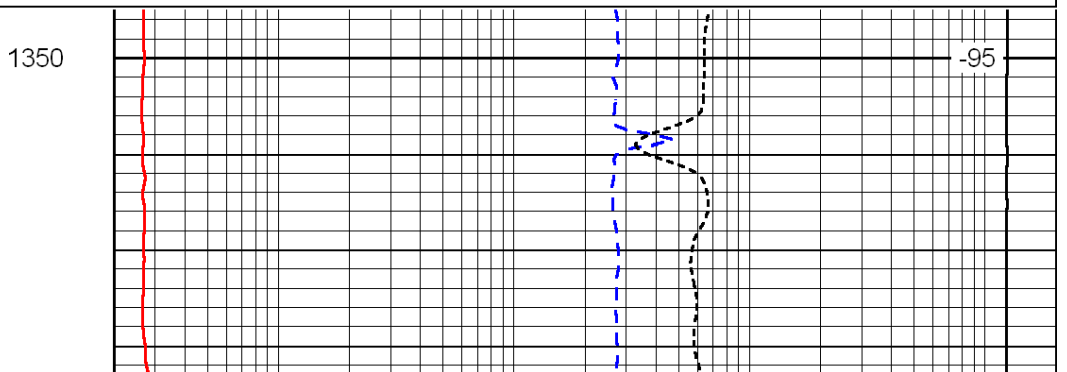
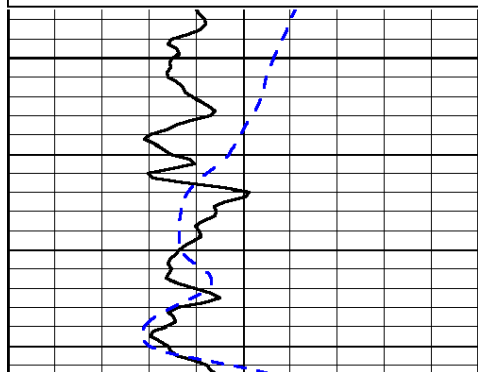
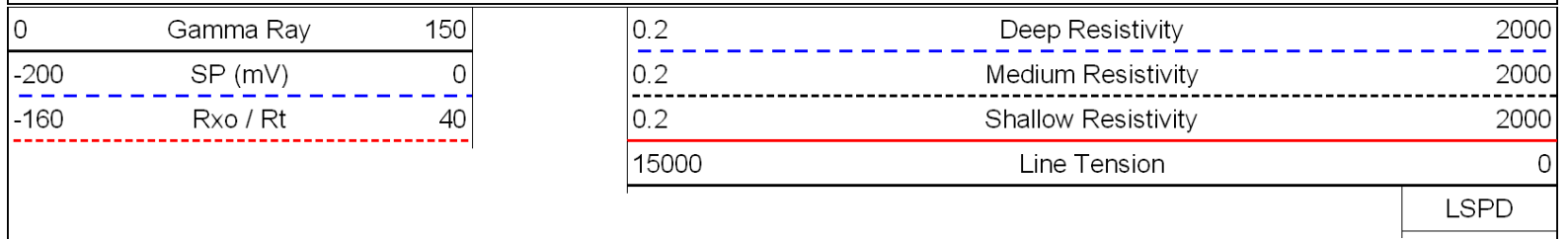


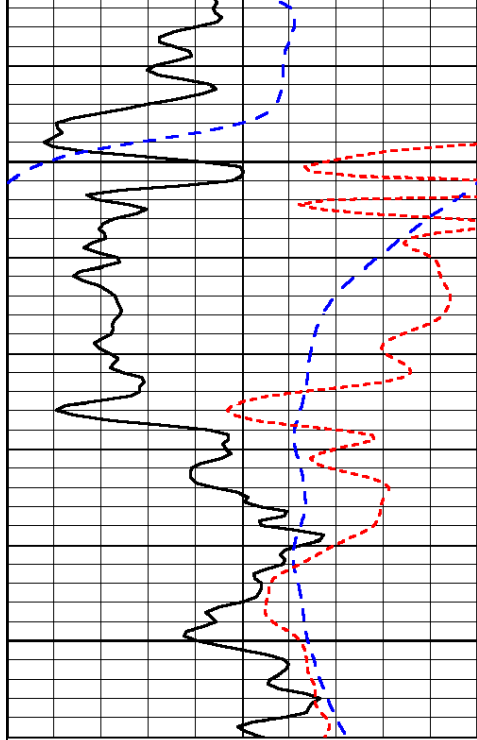




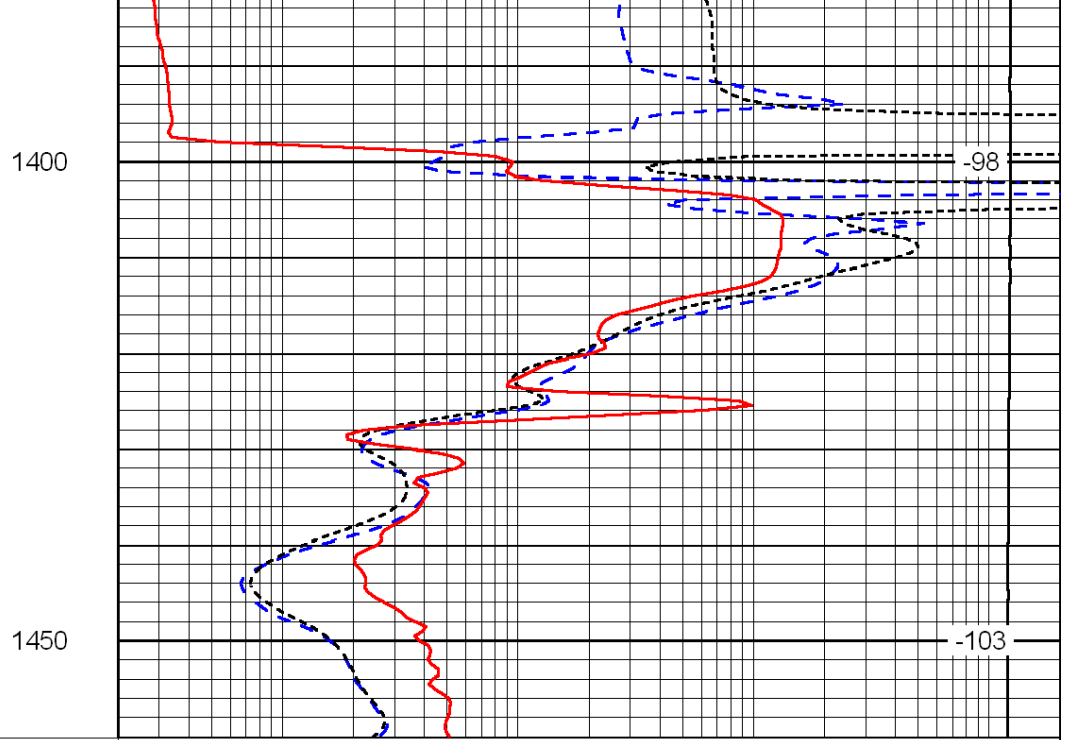


Database File: c:\warrior\data\amwar_moore no. 5-1\amwarrhd.db
 Dataset Pathname: dil/amwarr2in
 Presentation Format: dil
 Dataset Creation: Tue Jun 15 02:26:06 2010
 Charted by: Depth in Feet scaled 1:240





0	Gamma Ray	150
-200	SP (mV)	0
-160	Rxo / Rt	40



0.2	Deep Resistivity	2000
0.2	Medium Resistivity	2000
0.2	Shallow Resistivity	2000
15000	Line Tension	0

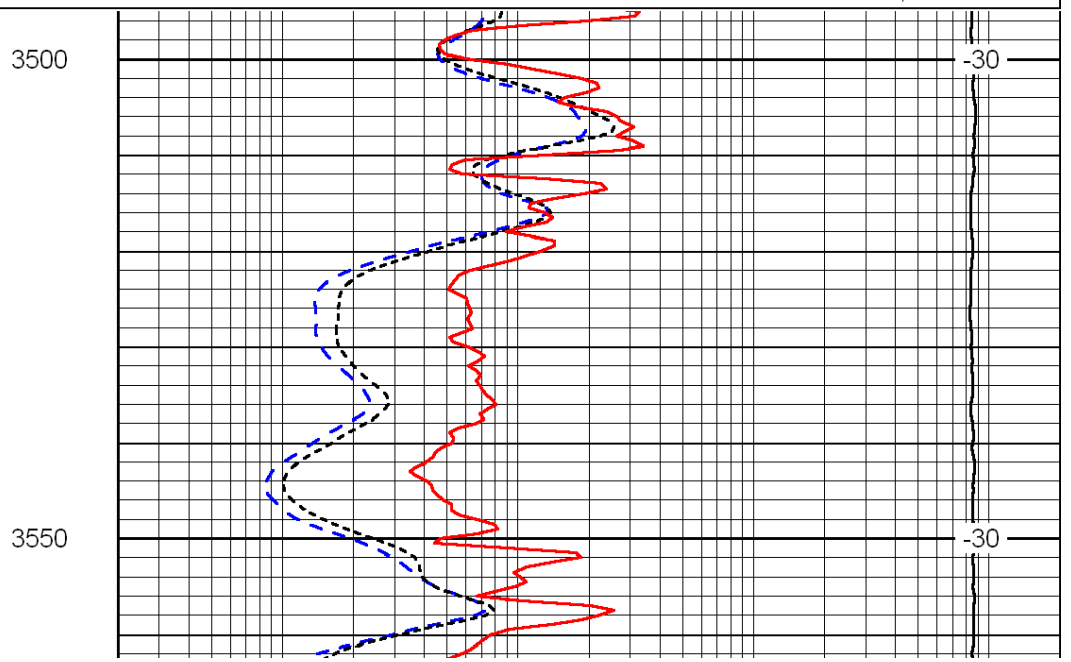
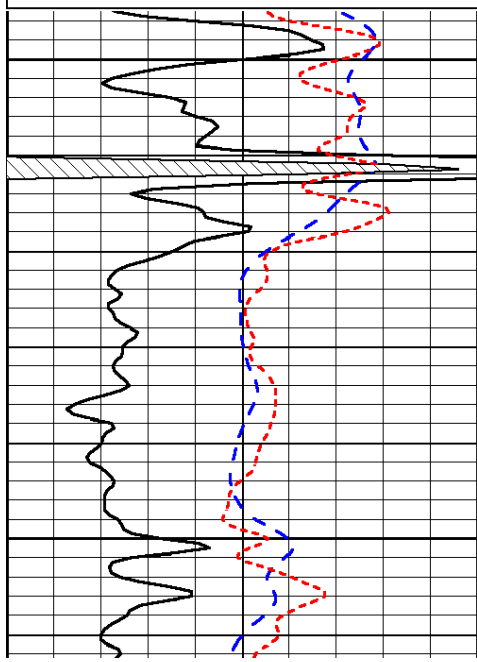
LSPD

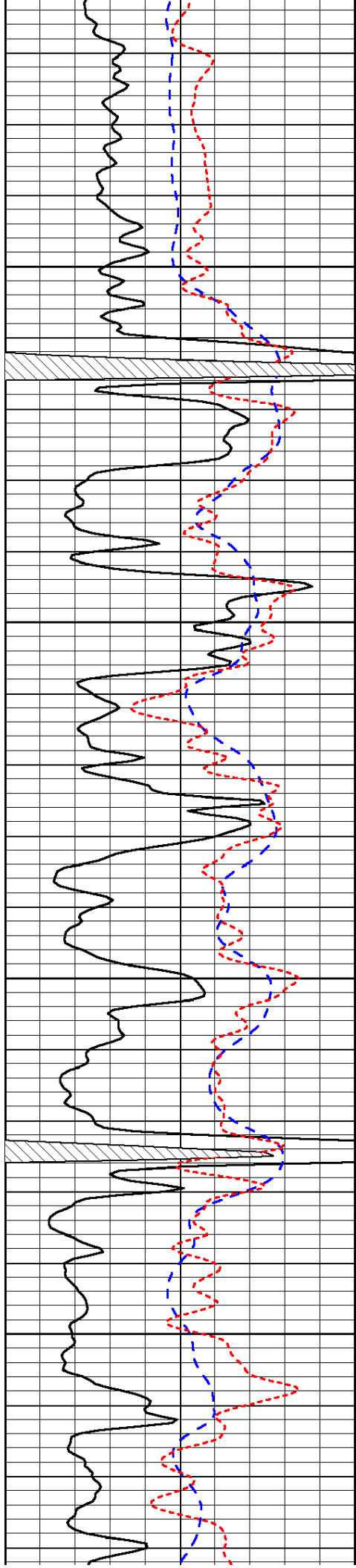
Database File: c:\warrior\data\amwar_moore no. 5-1\amwarrhd.db
 Dataset Pathname: dil/amwarr2in
 Presentation Format: dil
 Dataset Creation: Tue Jun 15 02:26:06 2010
 Charted by: Depth in Feet scaled 1:240

0	Gamma Ray	150
-200	SP (mV)	0
-160	Rxo / Rt	40

0.2	Deep Resistivity	2000
0.2	Medium Resistivity	2000
0.2	Shallow Resistivity	2000
15000	Line Tension	0

LSPD



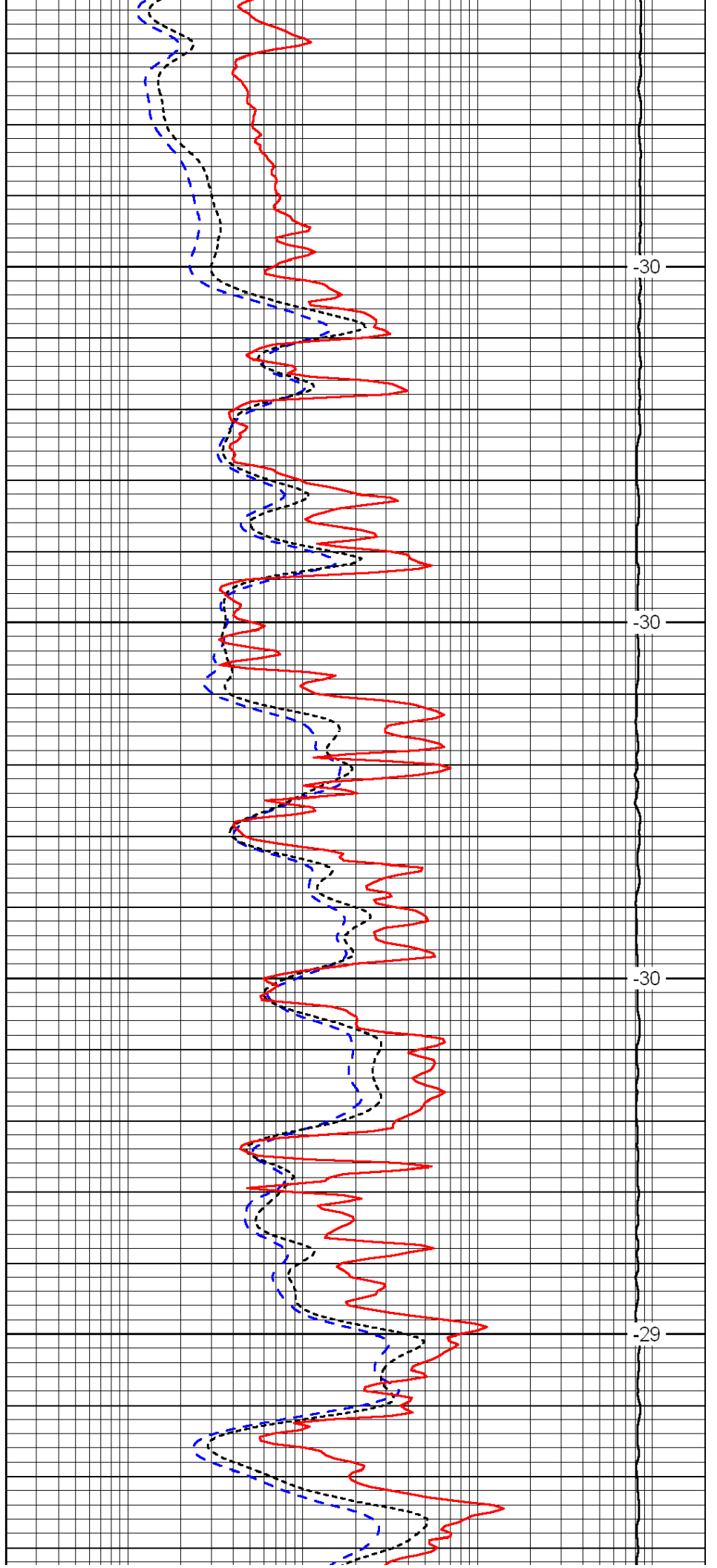


3600

3650

3700

3750

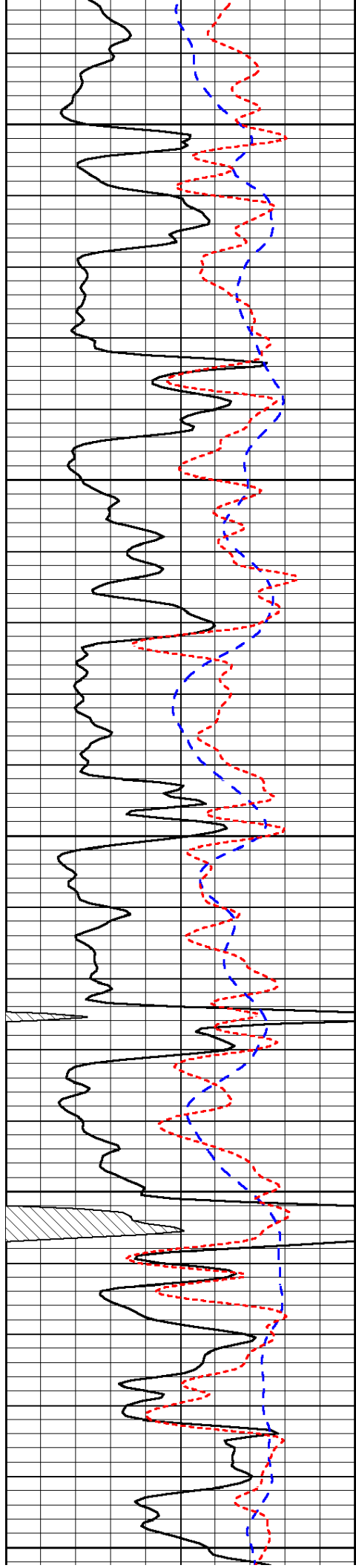


-30

-30

-30

-29



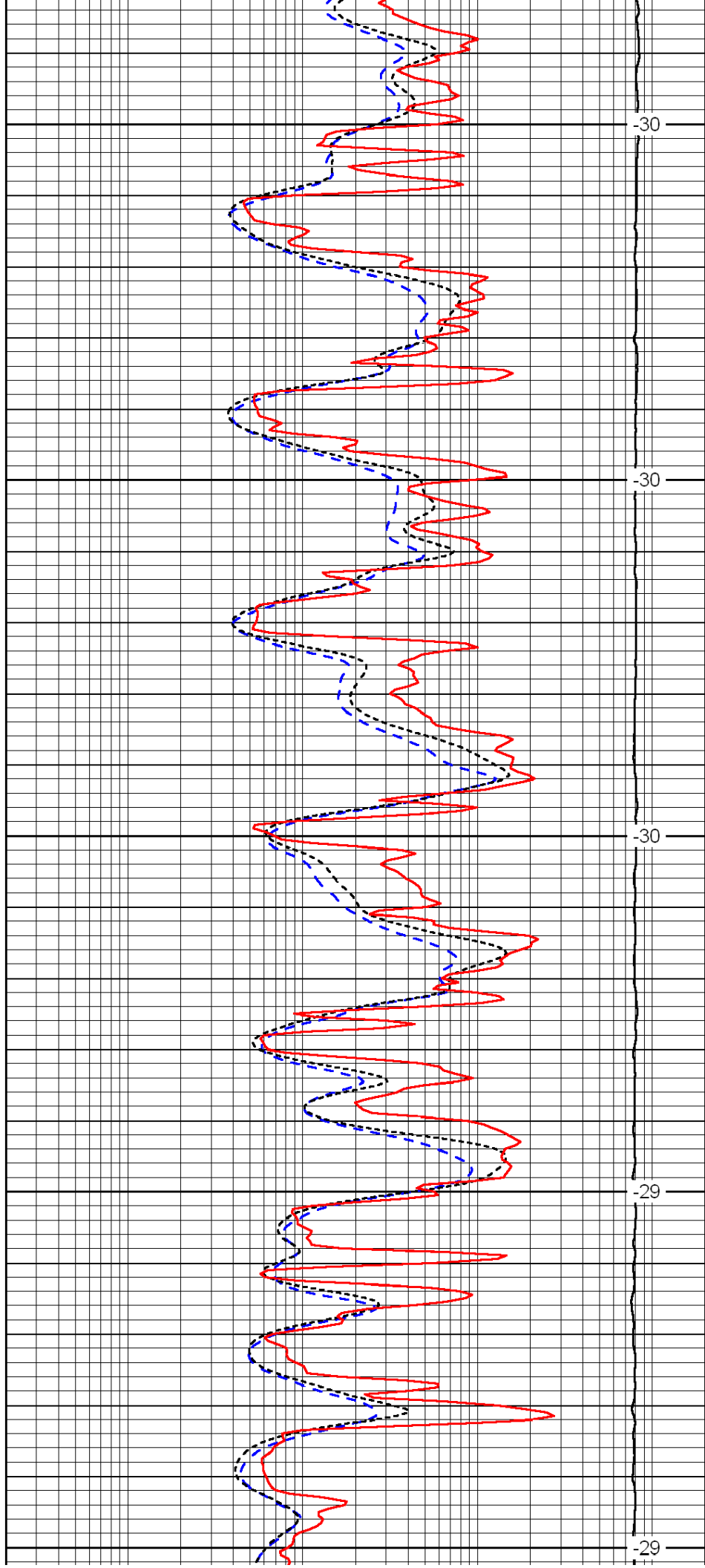
3800

3850

3900

3950

4000



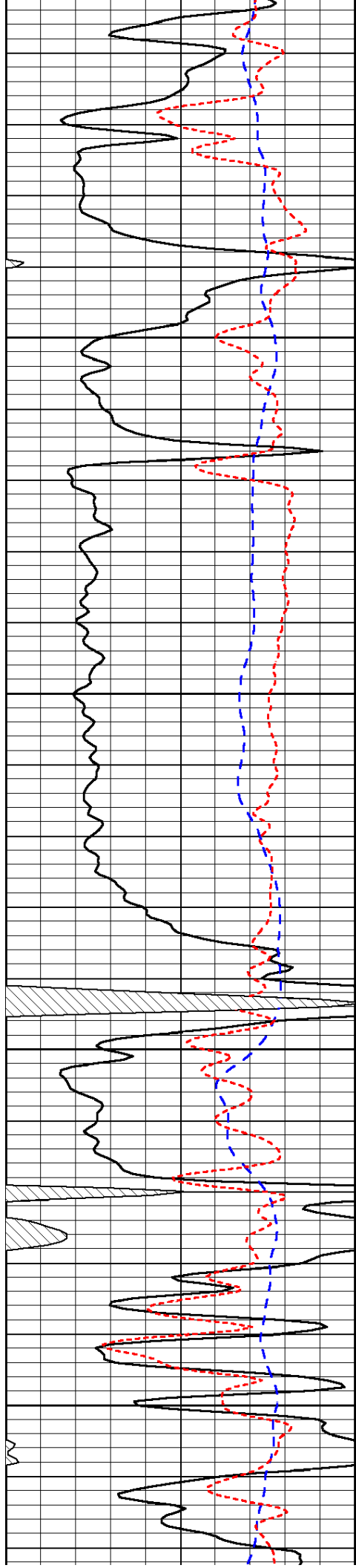
-30

-30

-30

-29

-29

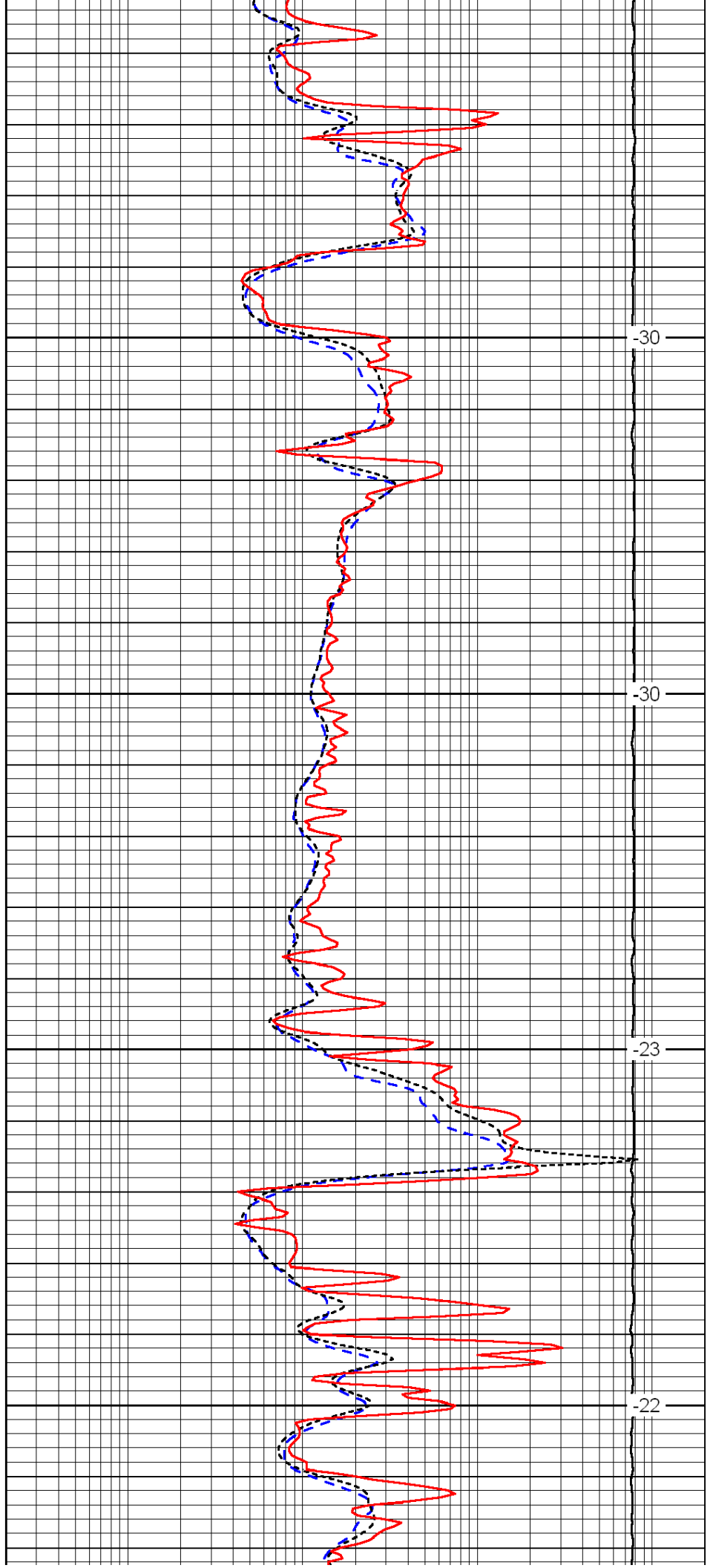


4050

4100

4150

4200

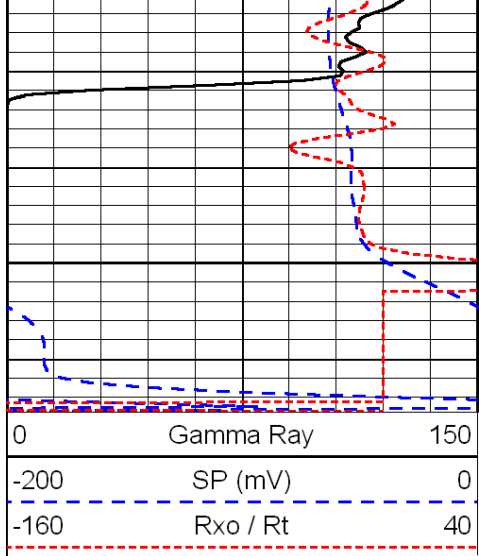


-30

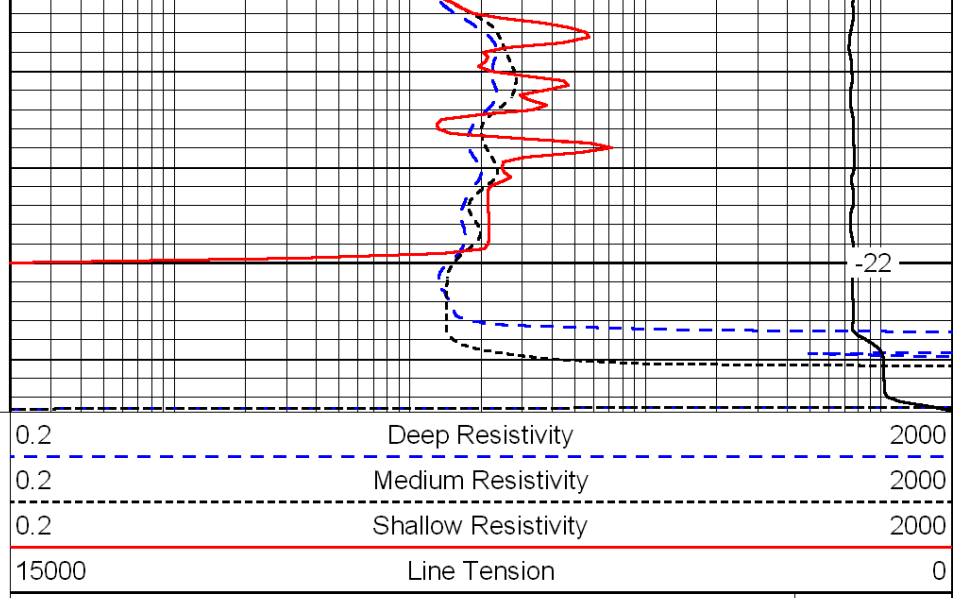
-30

-23

-22



4250



-22

LSPD