



**Borehole Compensated
Sonic Log**

DIGITAL LOG (785) 625-3858

API No.	15-097-21,673-00-00
Company	L. D. Drilling, Inc.
Well	Anthony No.1-27
Field	
County	Kiowa
State	Kansas
Location	E/2 E/2 NW SW 1980' FSL & 1300' FWL
Sec: 27	Twp: 27S Rge: 18W
Other Services	CNL/CDL MEL/DIL

Permanent Datum	Ground Level	Elevation 2182
Log Measured From	Kelly Bushing	12 Ft. Above Perm. Datum
Drilling Measured From	Kelly Bushing	
Date	5/12/2010	Elevation

Run Number	Two
Type Log	BHC Sonic
Depth Driller	4880
Depth Logger	4879
Bottom Logged Interval	4868
Top Logged Interval	450
Type Fluid In Hole	Chemical
Salinity, PPM CL	7,900
Density	9.1
Level	Full
Max. Rec. Temp. F	125
Operating Rig Time	5 Hours
Equipment -- Location	15 Hays
Recorded By	C. Desaire
Witnessed By	Jim Musgrove

Borehole Record				Casing Record			
Run No.	Bit	From	To	Size	Wgt.	From	To
1	12.25	00	483	8.625	24#	00	483
2	7.875	483	4880				

<<< Fold Here >>>

All interpretations are opinions based on inferences from electrical or other measurements and we cannot and do not guarantee the accuracy or correctness of any interpretation, and we shall not, except in the case of gross or willful negligence on our part, be liable or responsible for any loss, costs, damages, or expenses incurred or sustained by anyone resulting from any interpretation made by any of our officers, agents or employees. These interpretations are also subject to our general terms and conditions set out in our current Price Schedule.

Comments

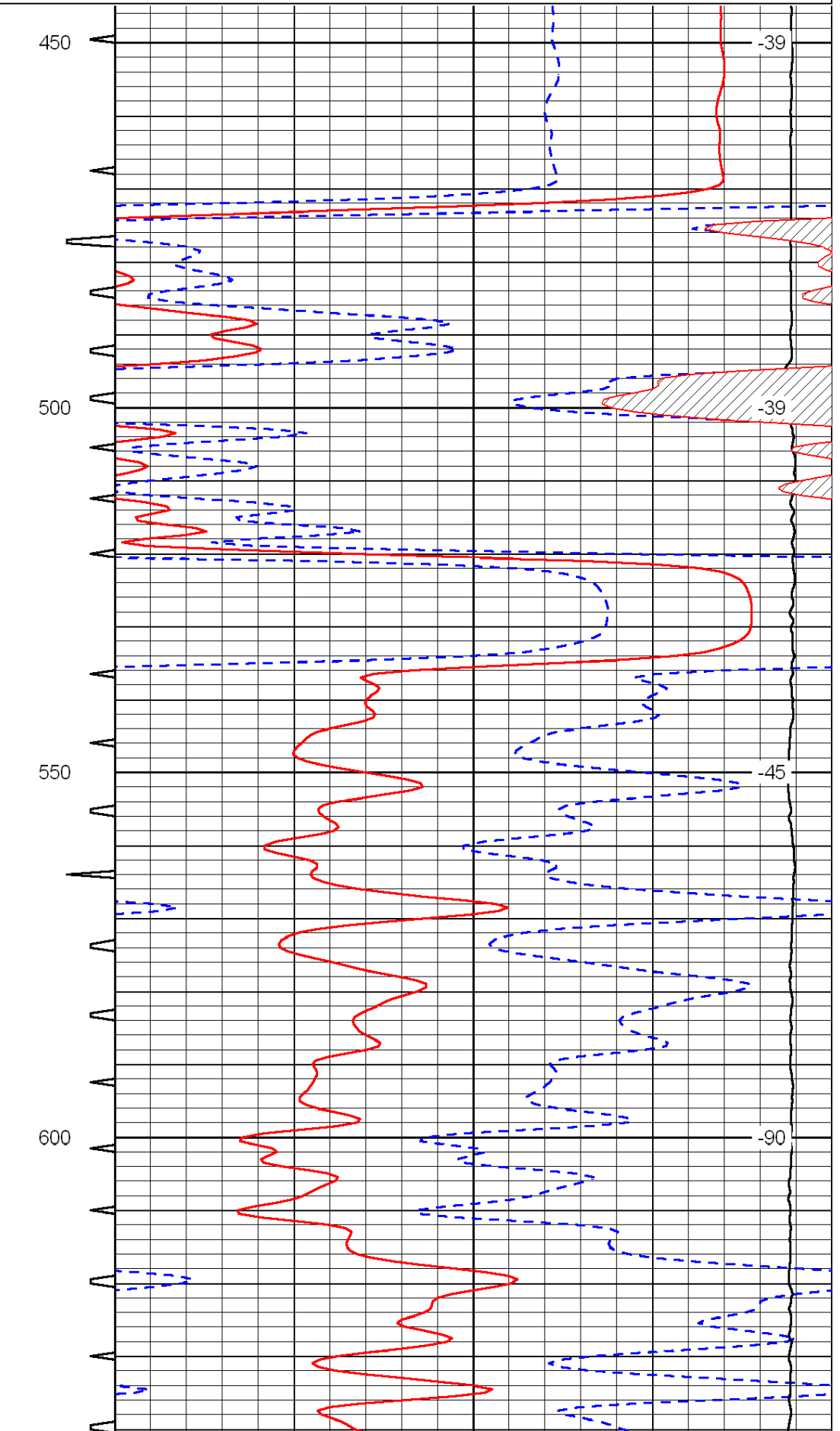
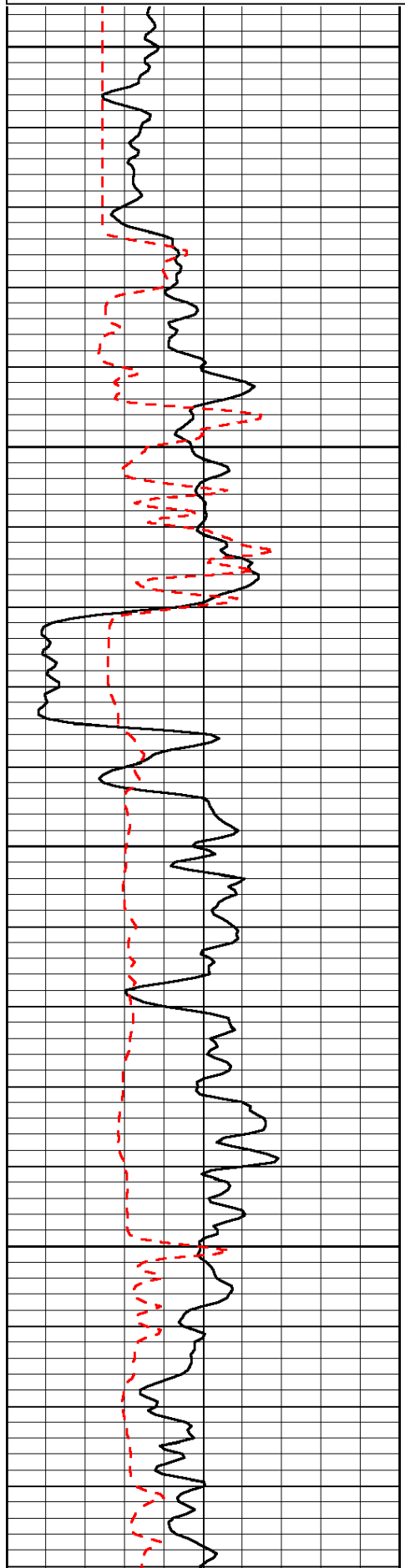
Thank you for using Log-Tech, Inc.
(785) 625-3858

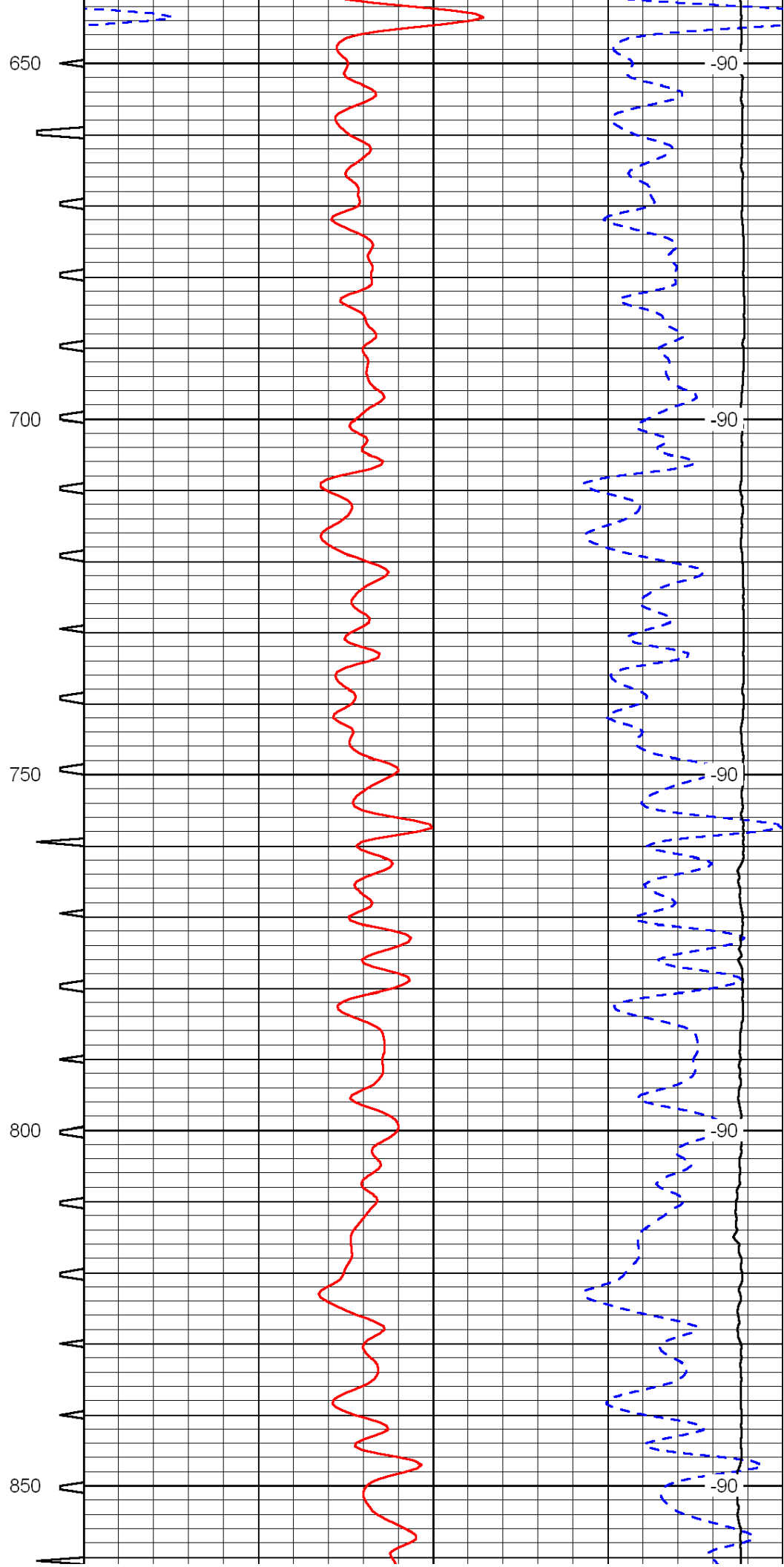
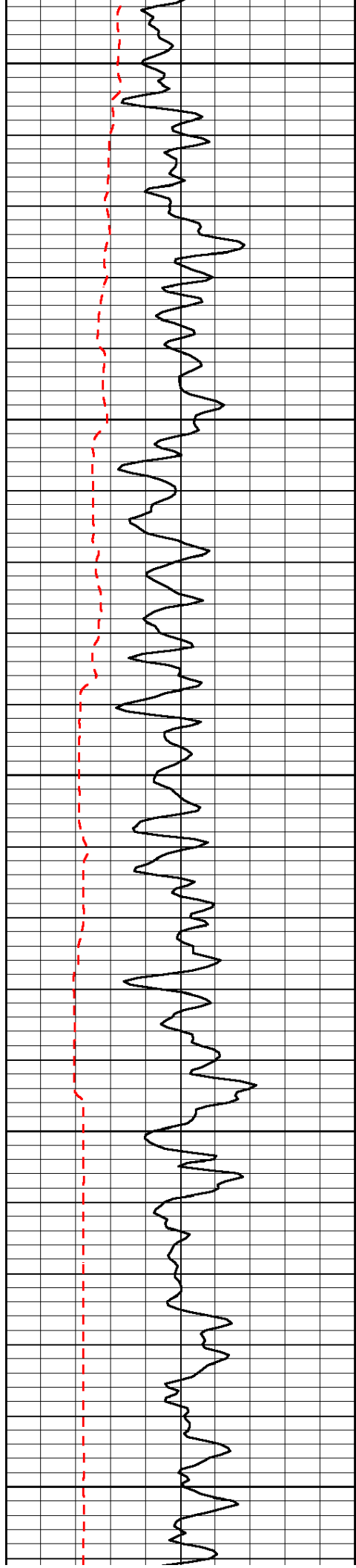
Greensburg, 3 1/2 N of Stoplight, E Into

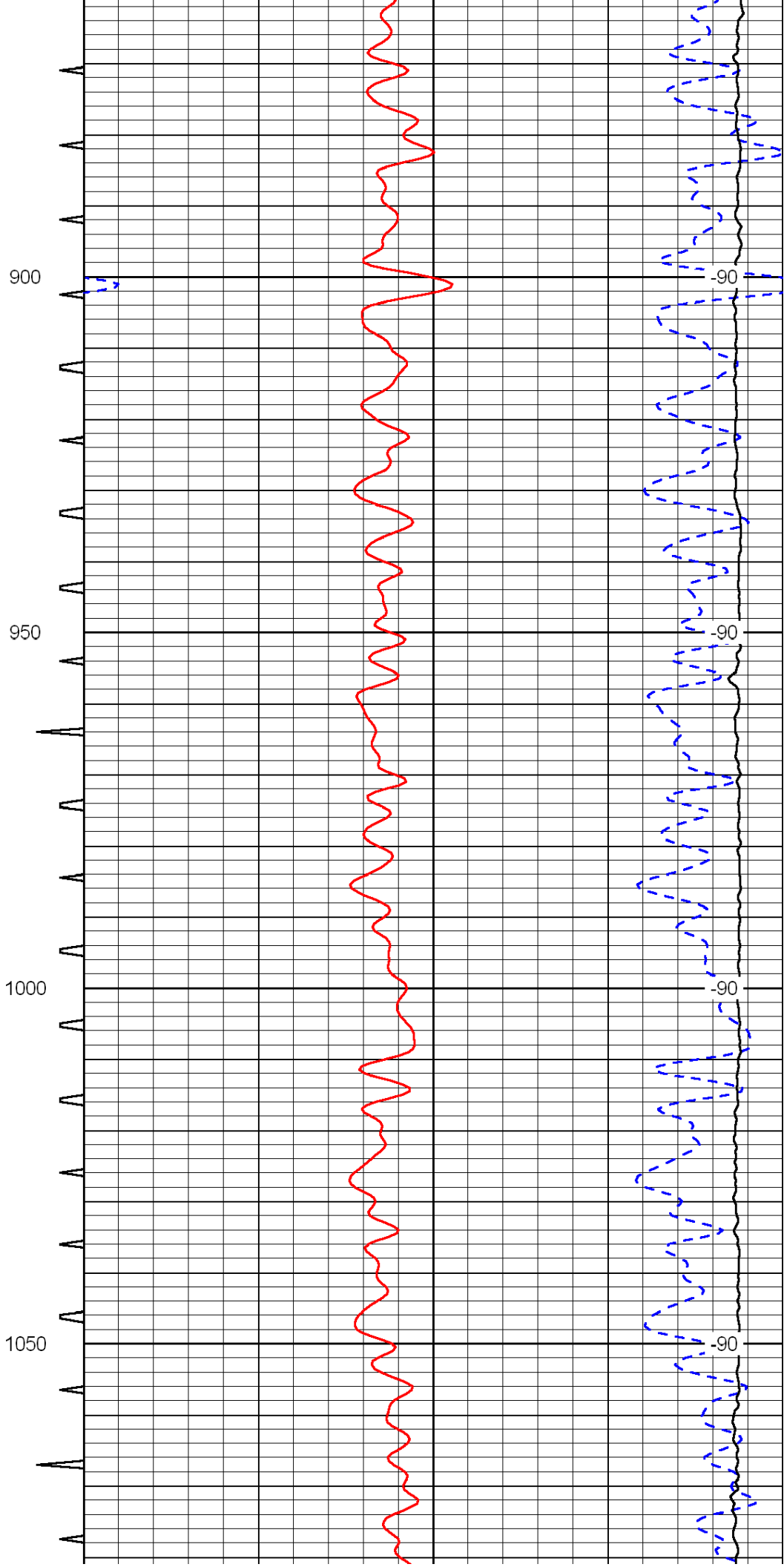
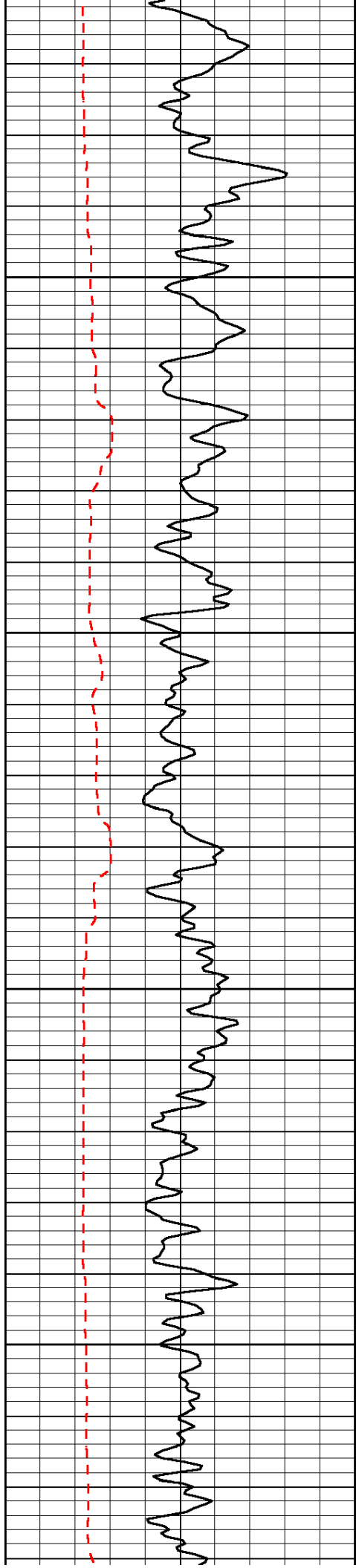
Database File: c:\warrior\data\ld drilling_anthony no.1-27\ldhd.db
 Dataset Pathname: dil\dstk2
 Presentation Format: sonic
 Dataset Creation: Thu May 13 12:04:53 2010
 Charted by: Depth in Feet scaled 1:240

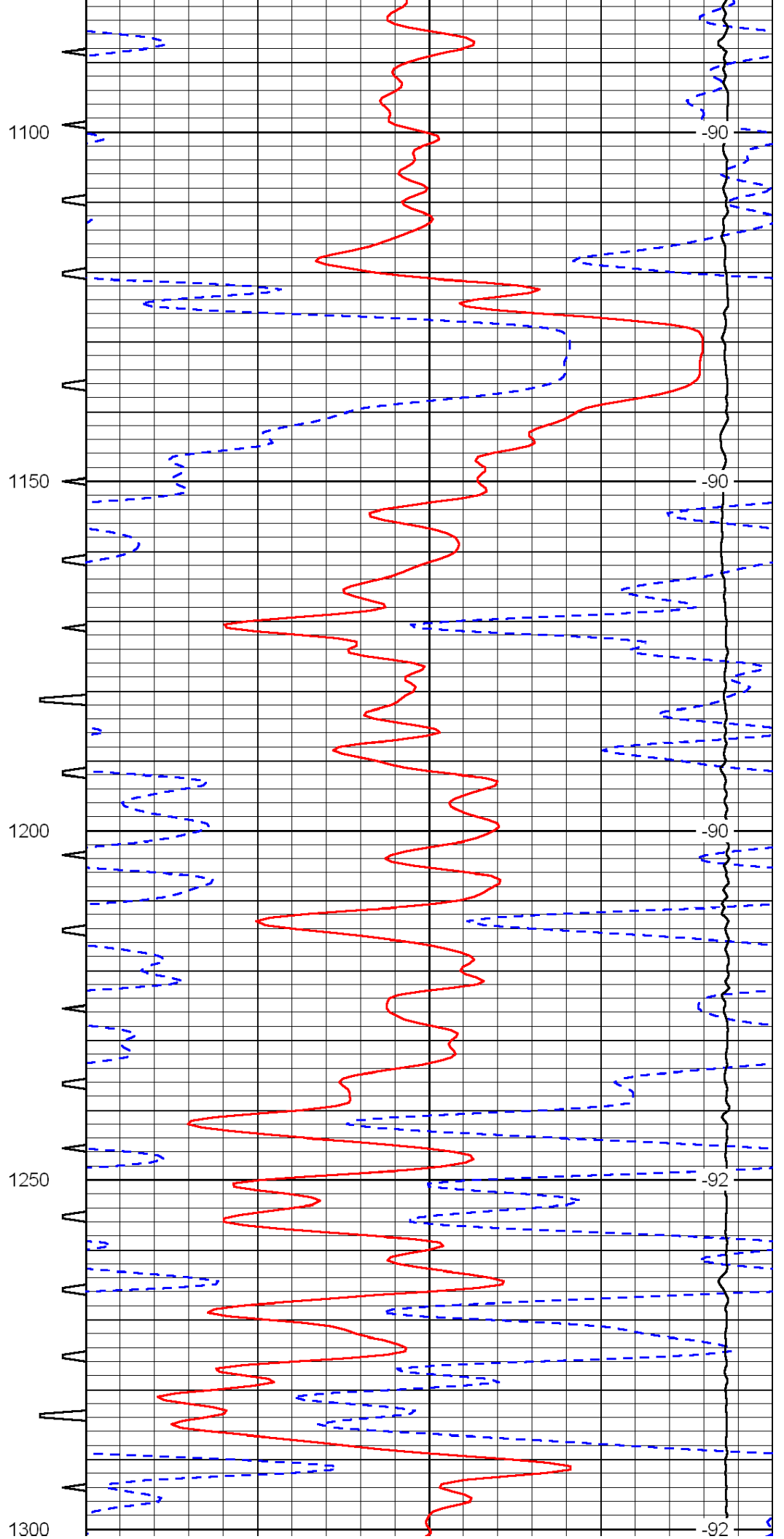
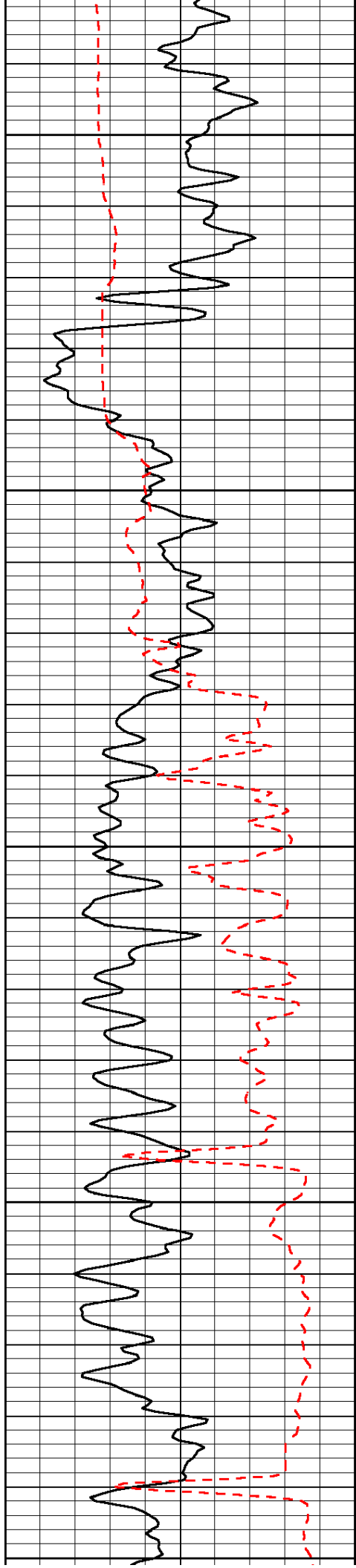
0	Gamma Ray	150	Sonic Int	140	Delta Time (usec/ft)	40
150	Gamma Ray	300	5	0	SPOR	-10
6	Caliper (GAPI)	16		15000	LTEN (lb)	0

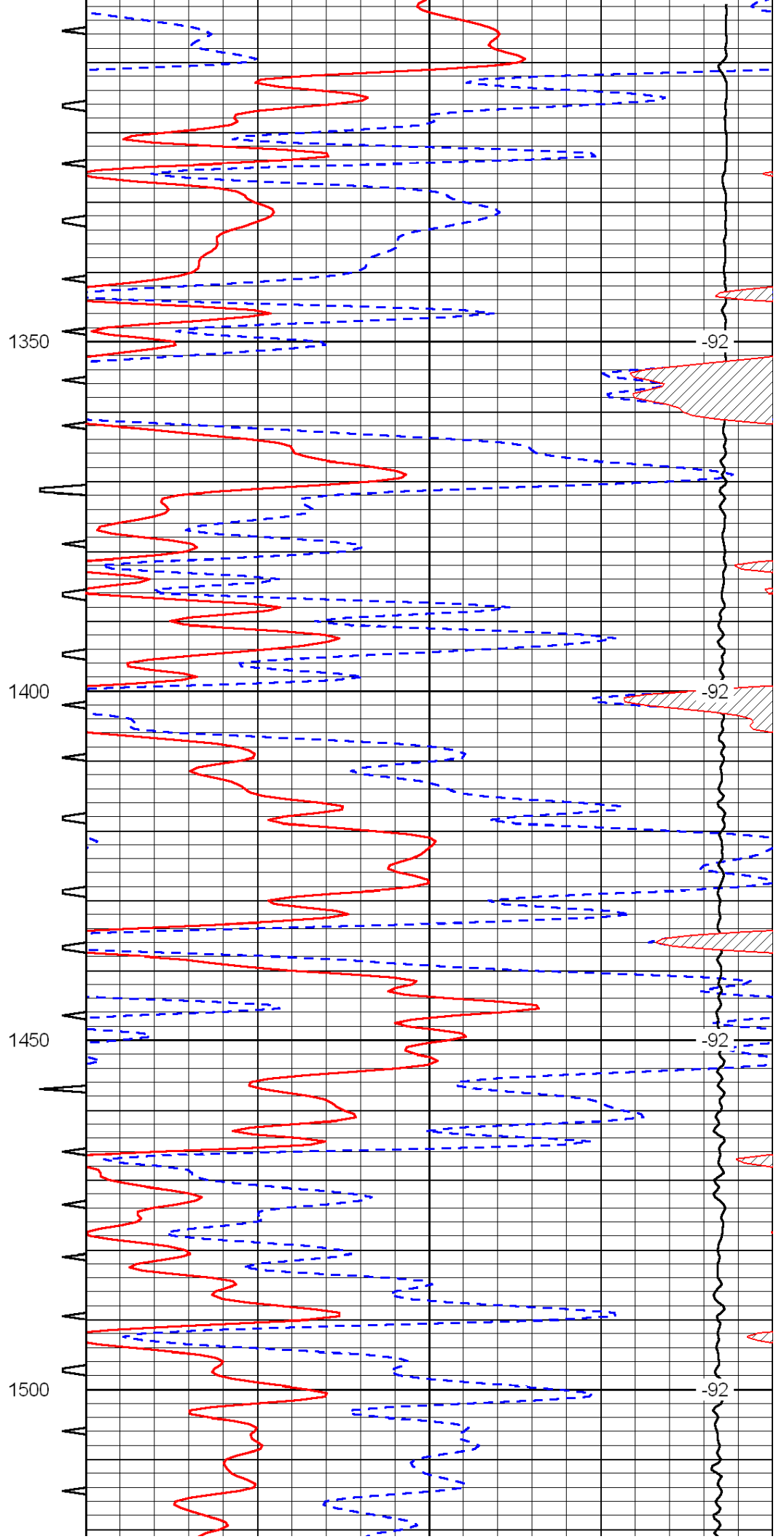
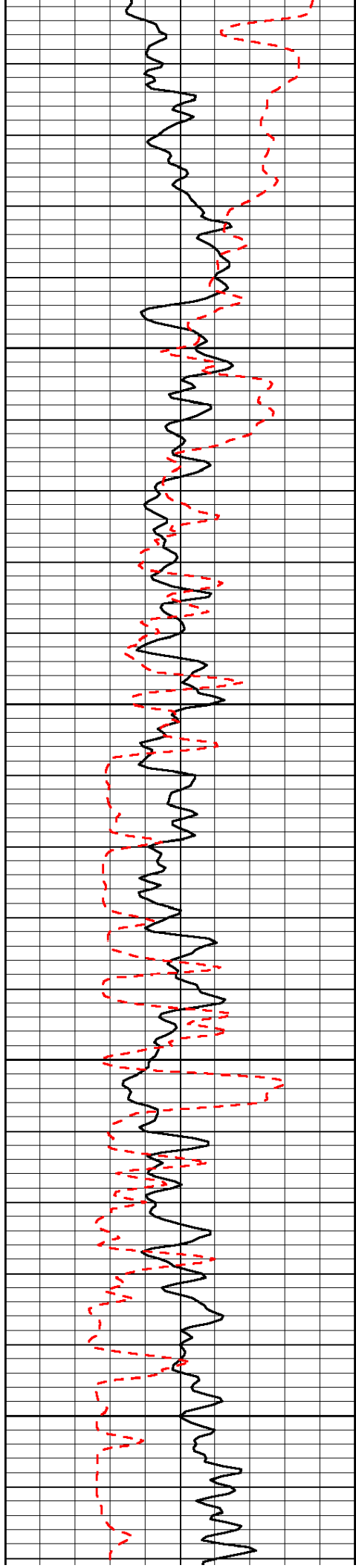
LSPD

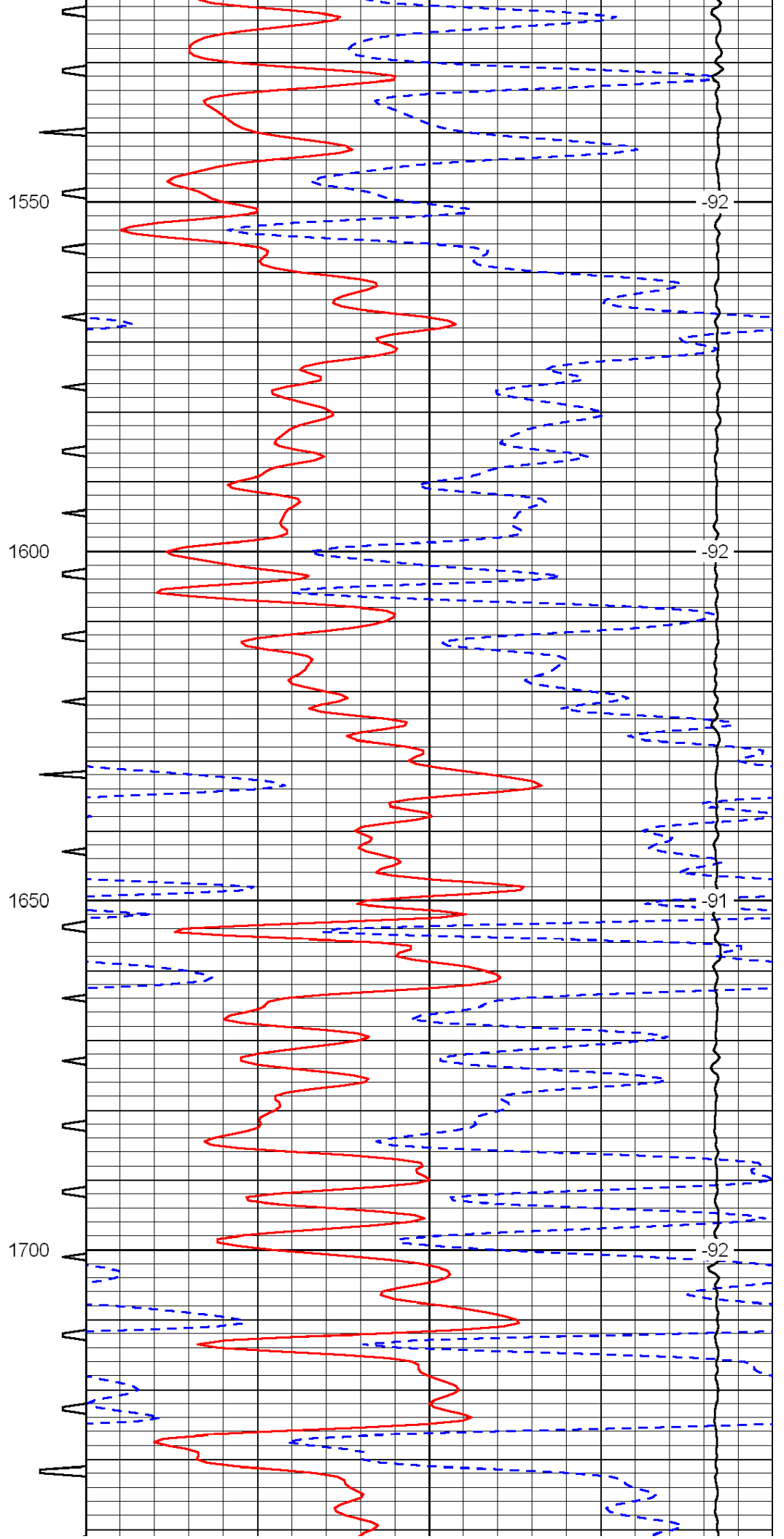
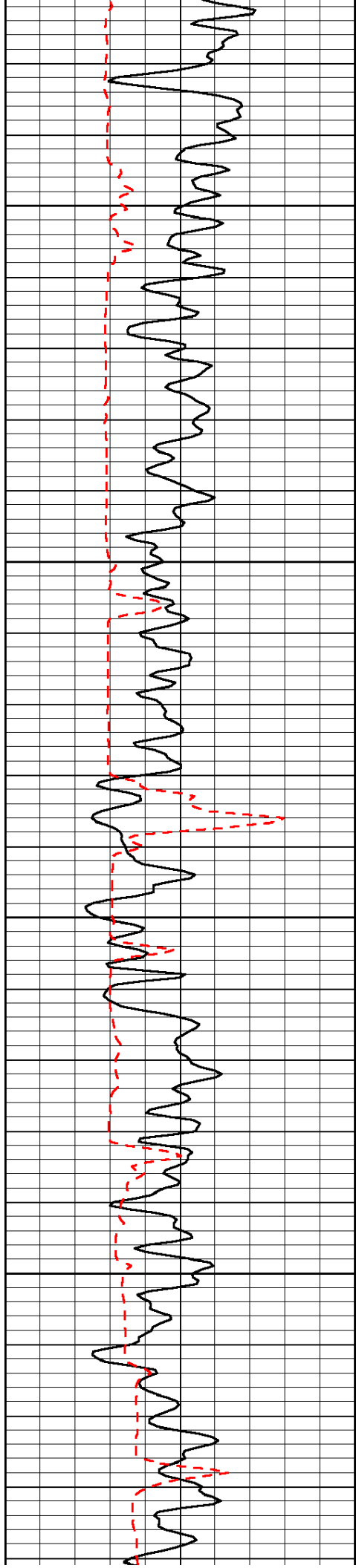


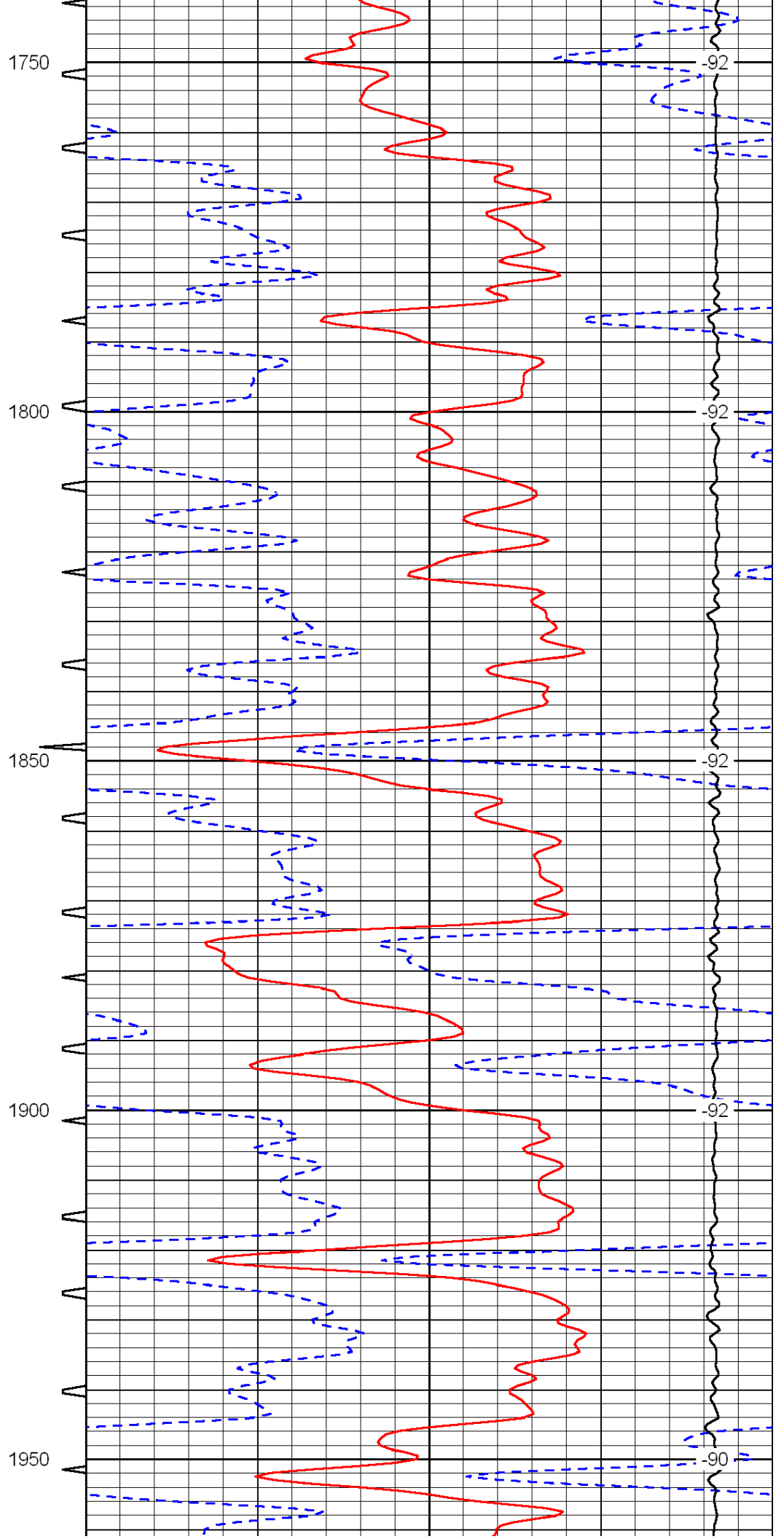
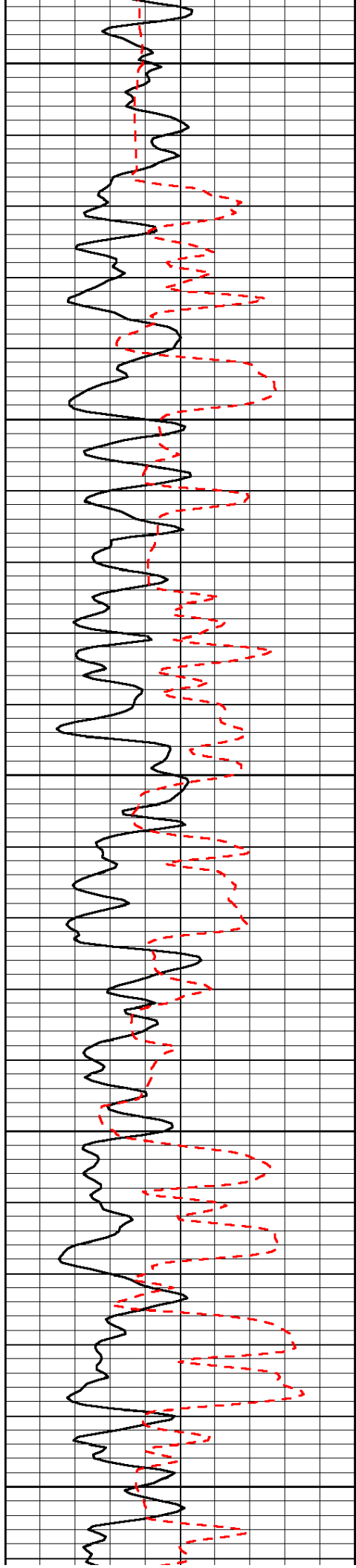


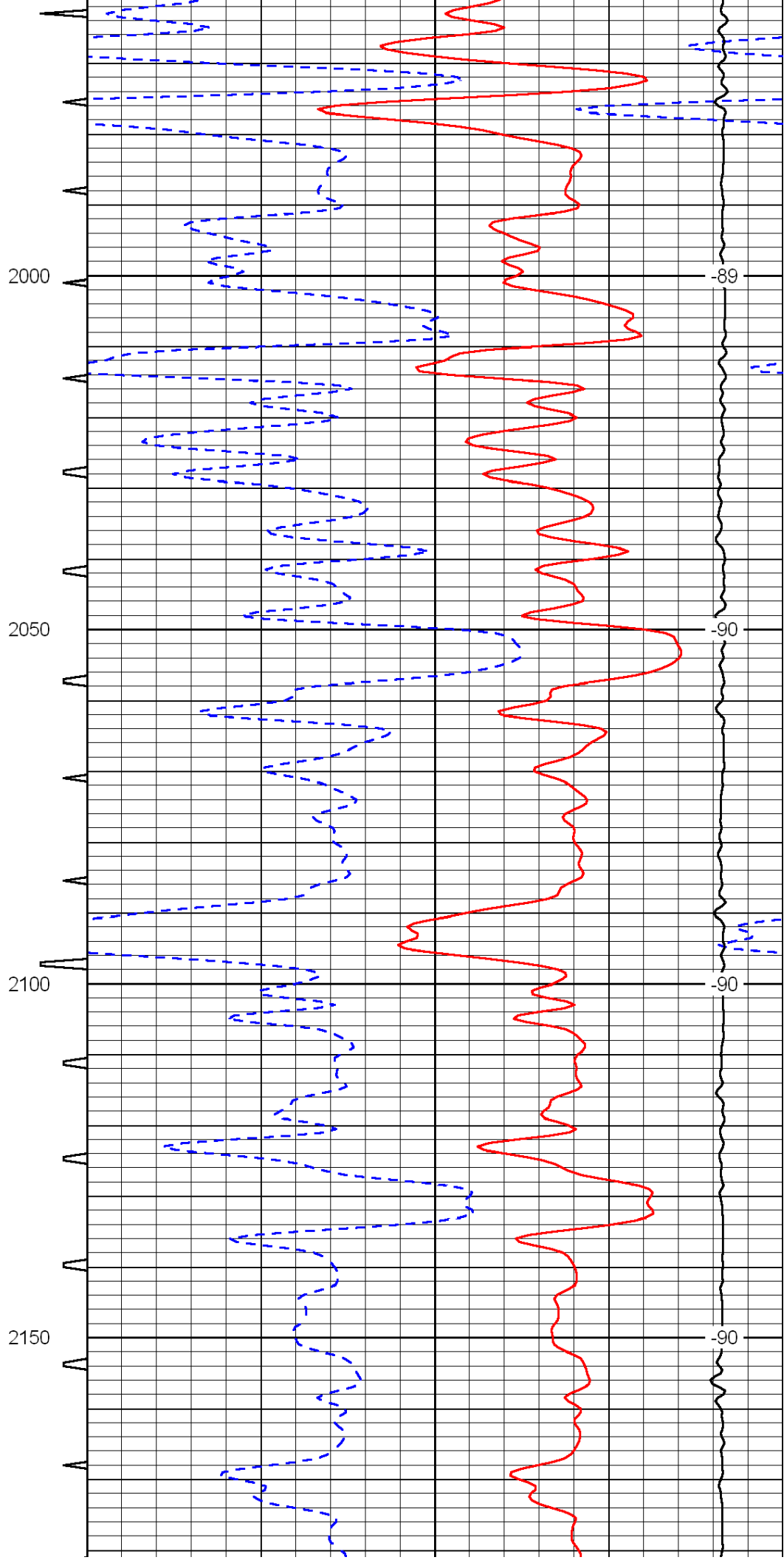
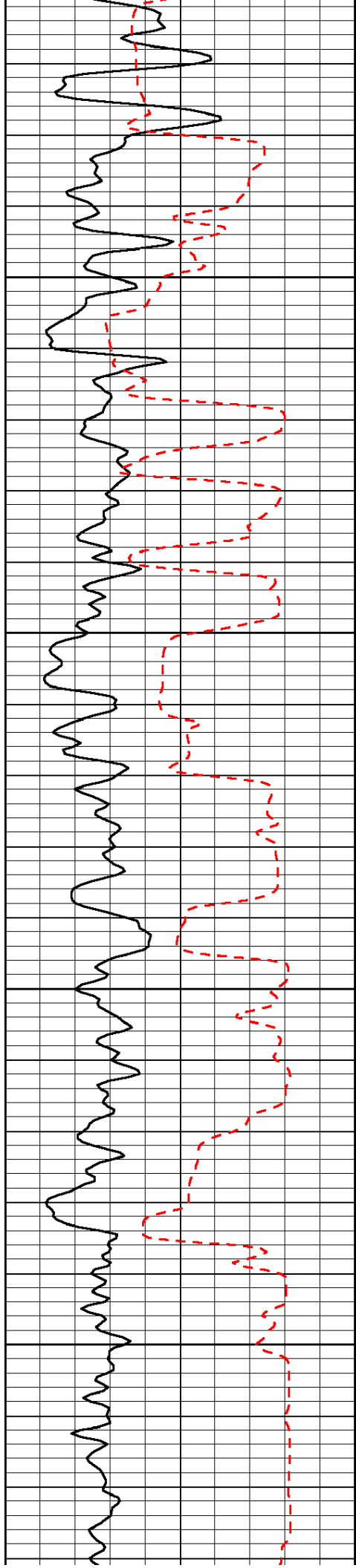


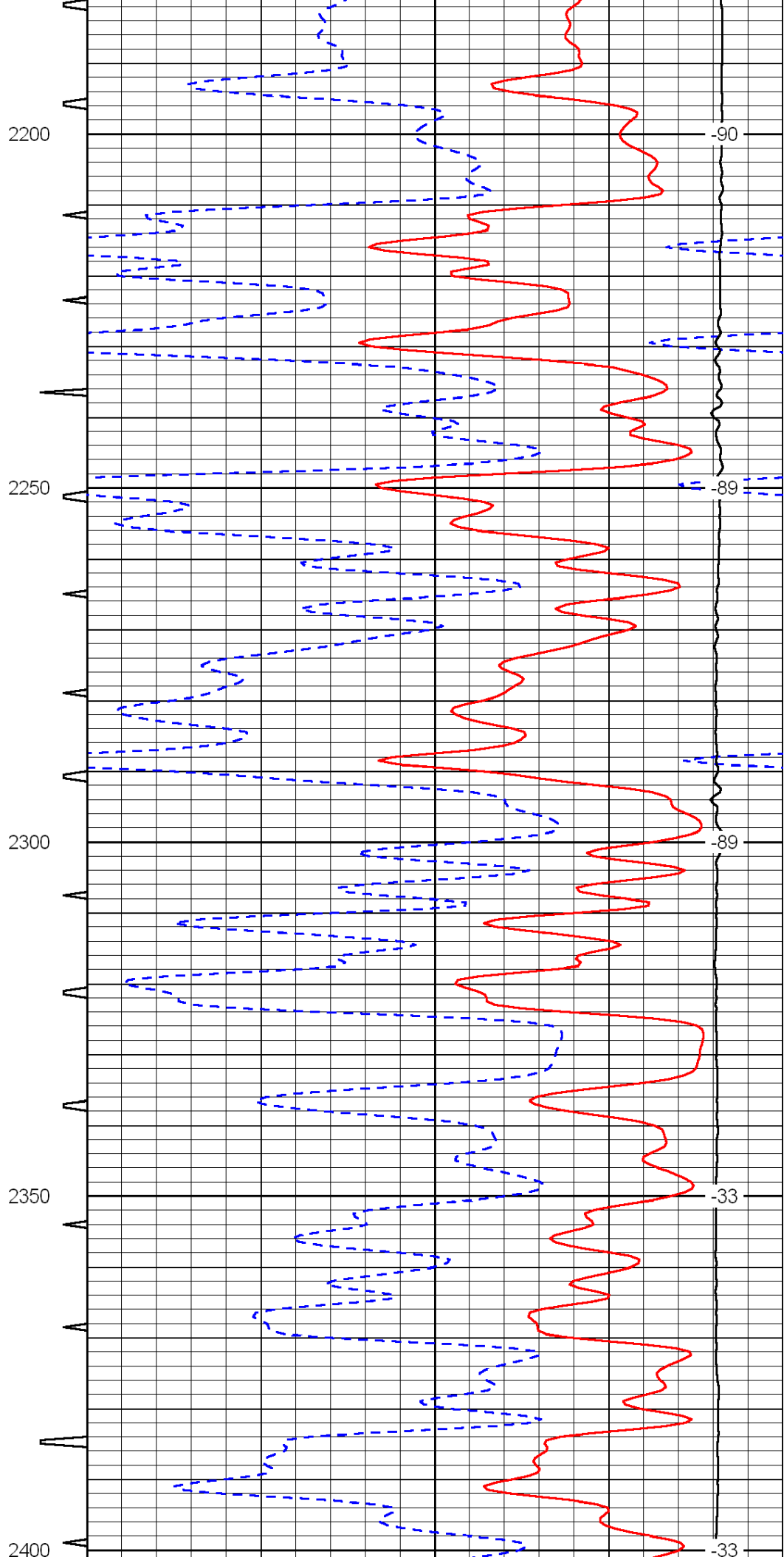
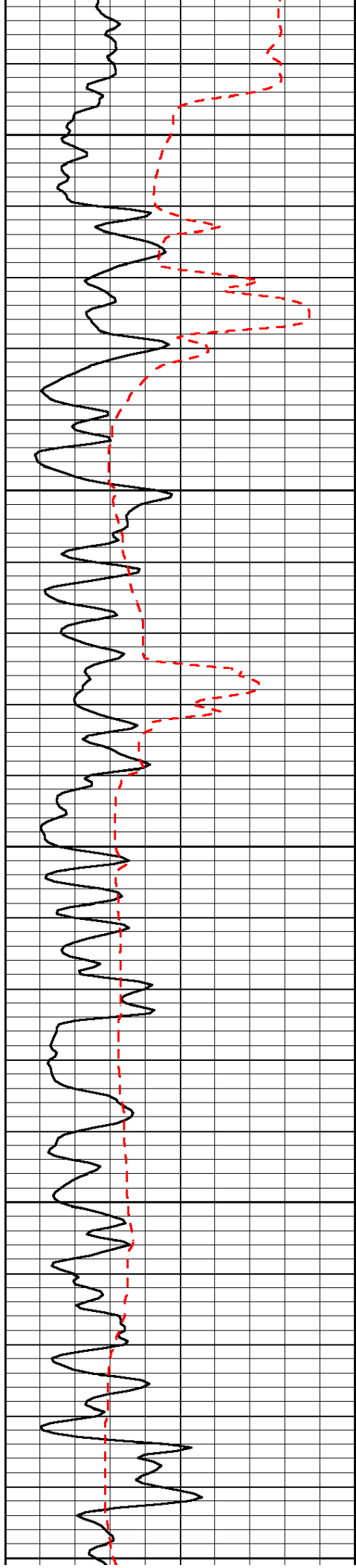


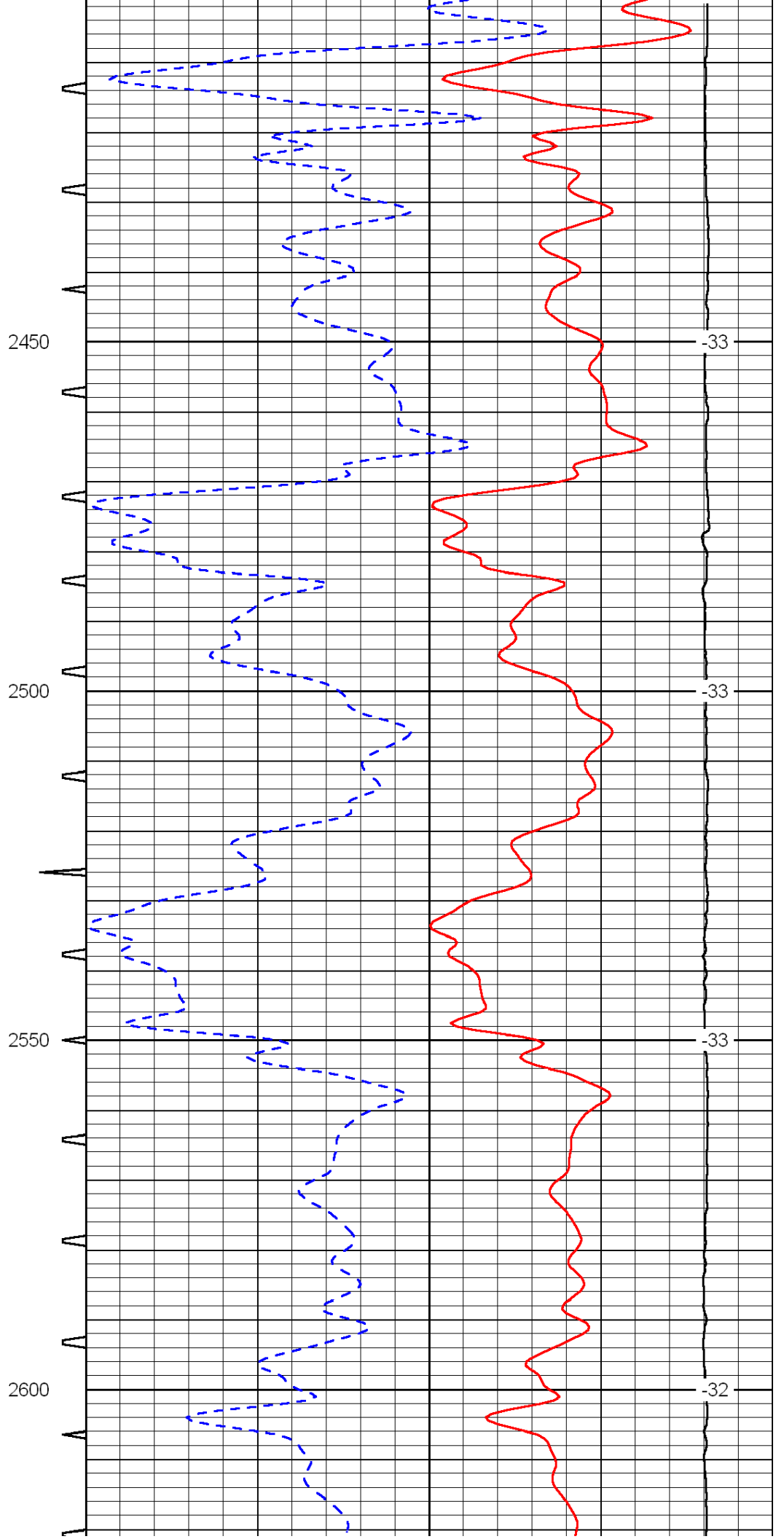
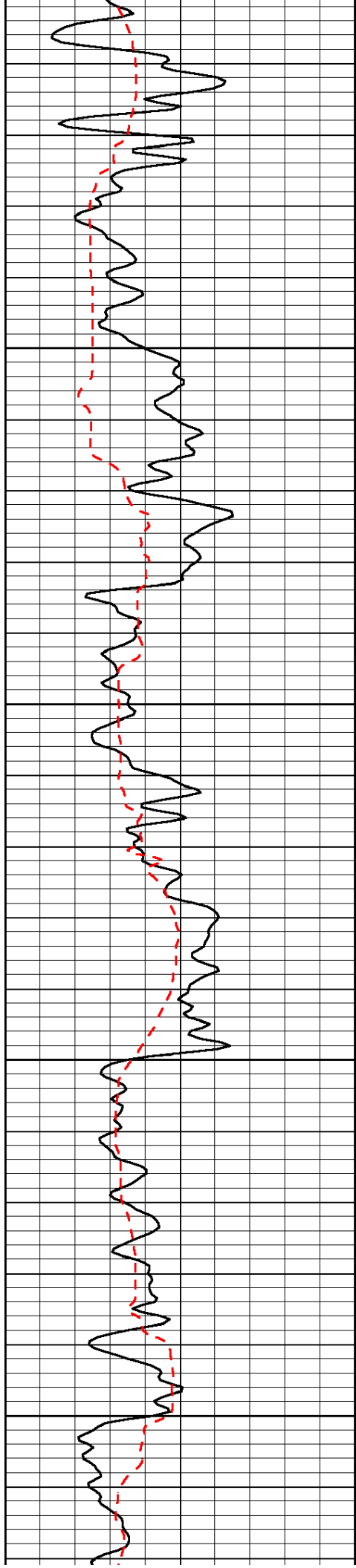


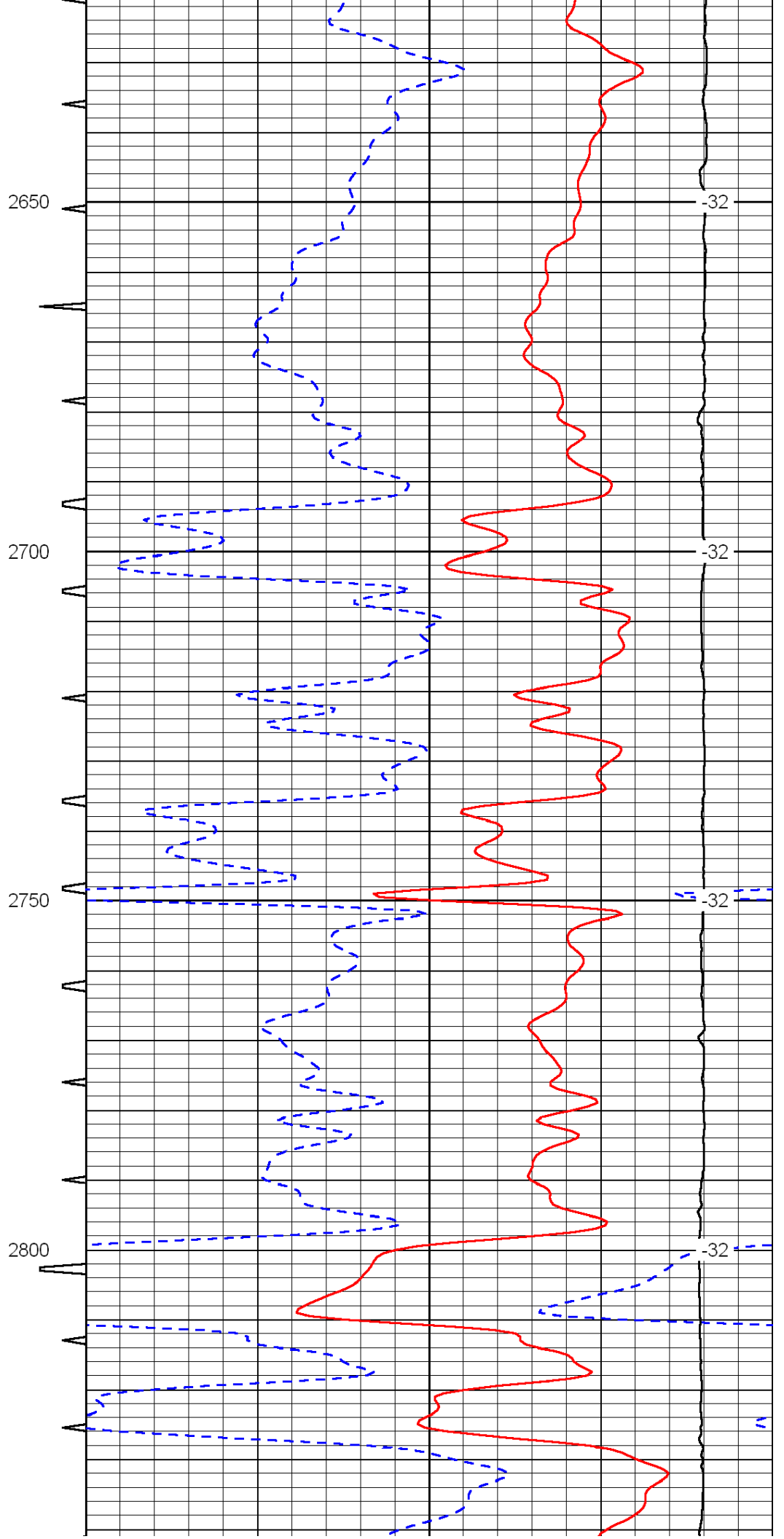
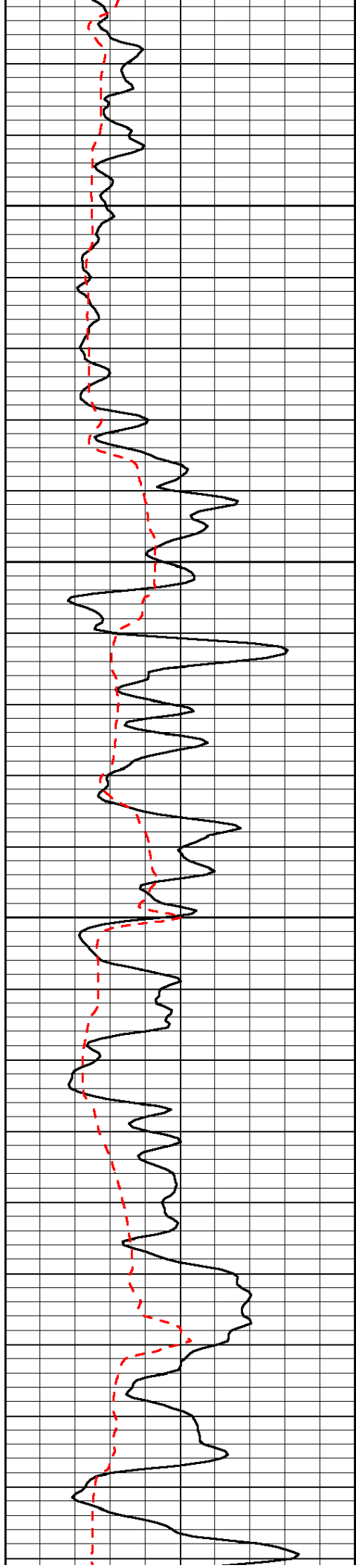


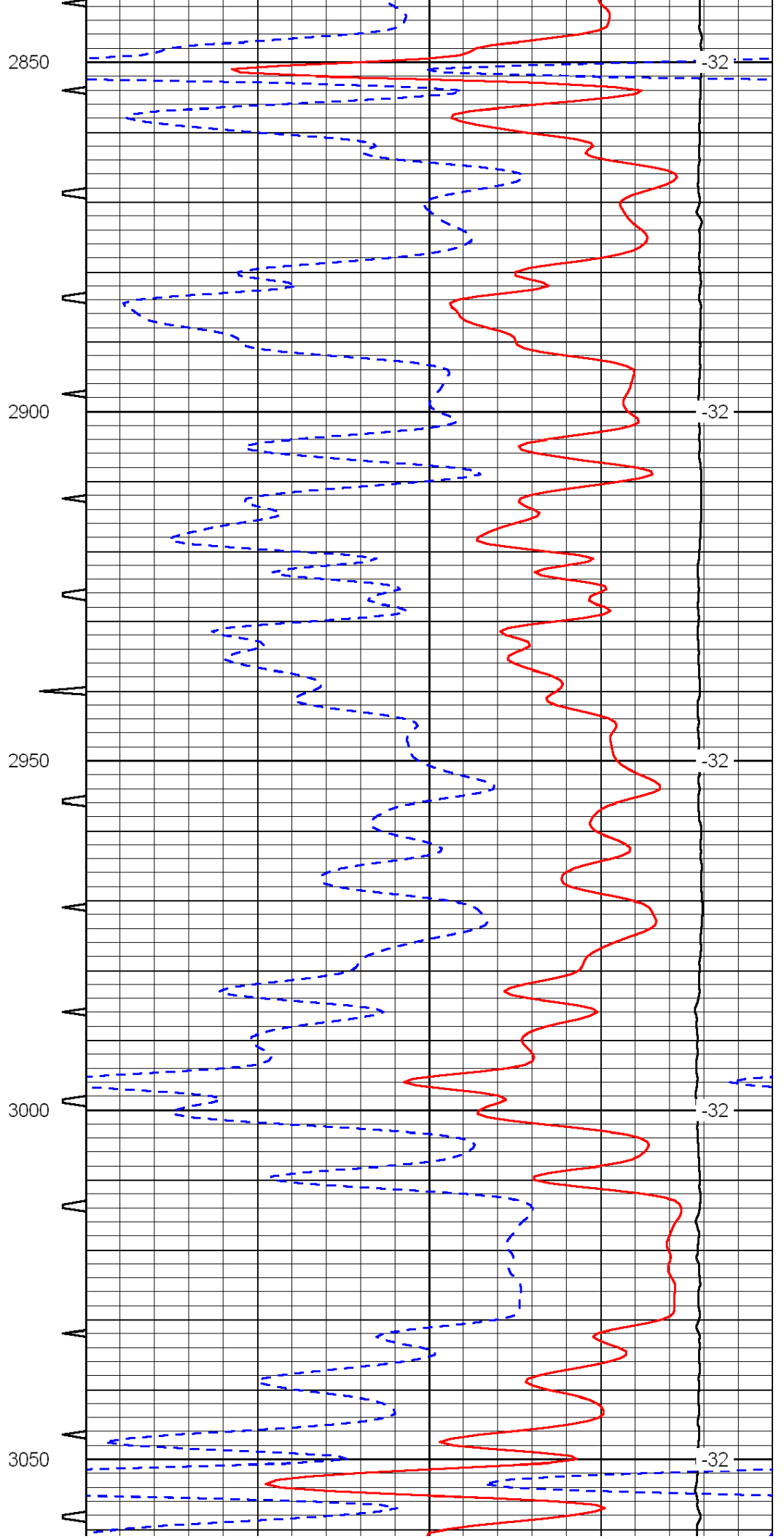
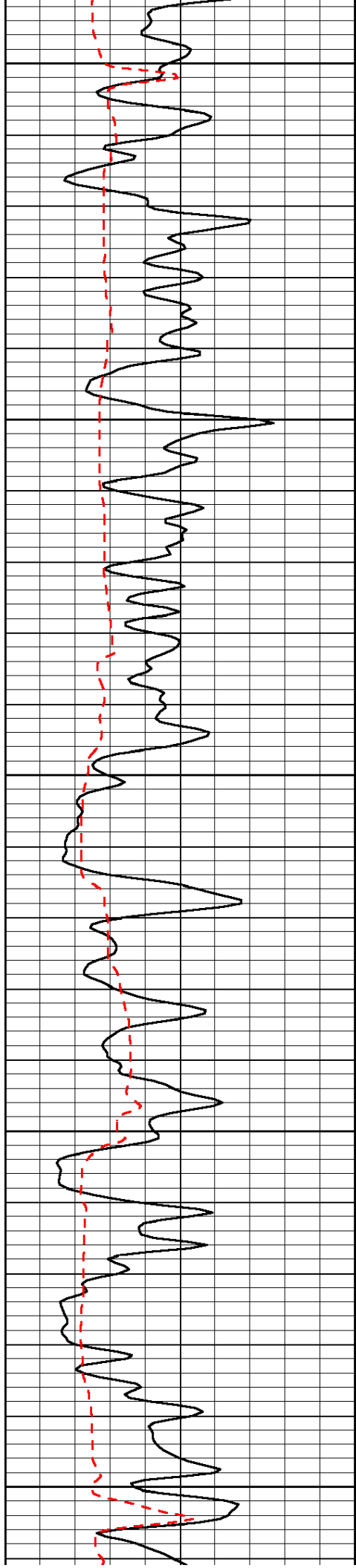


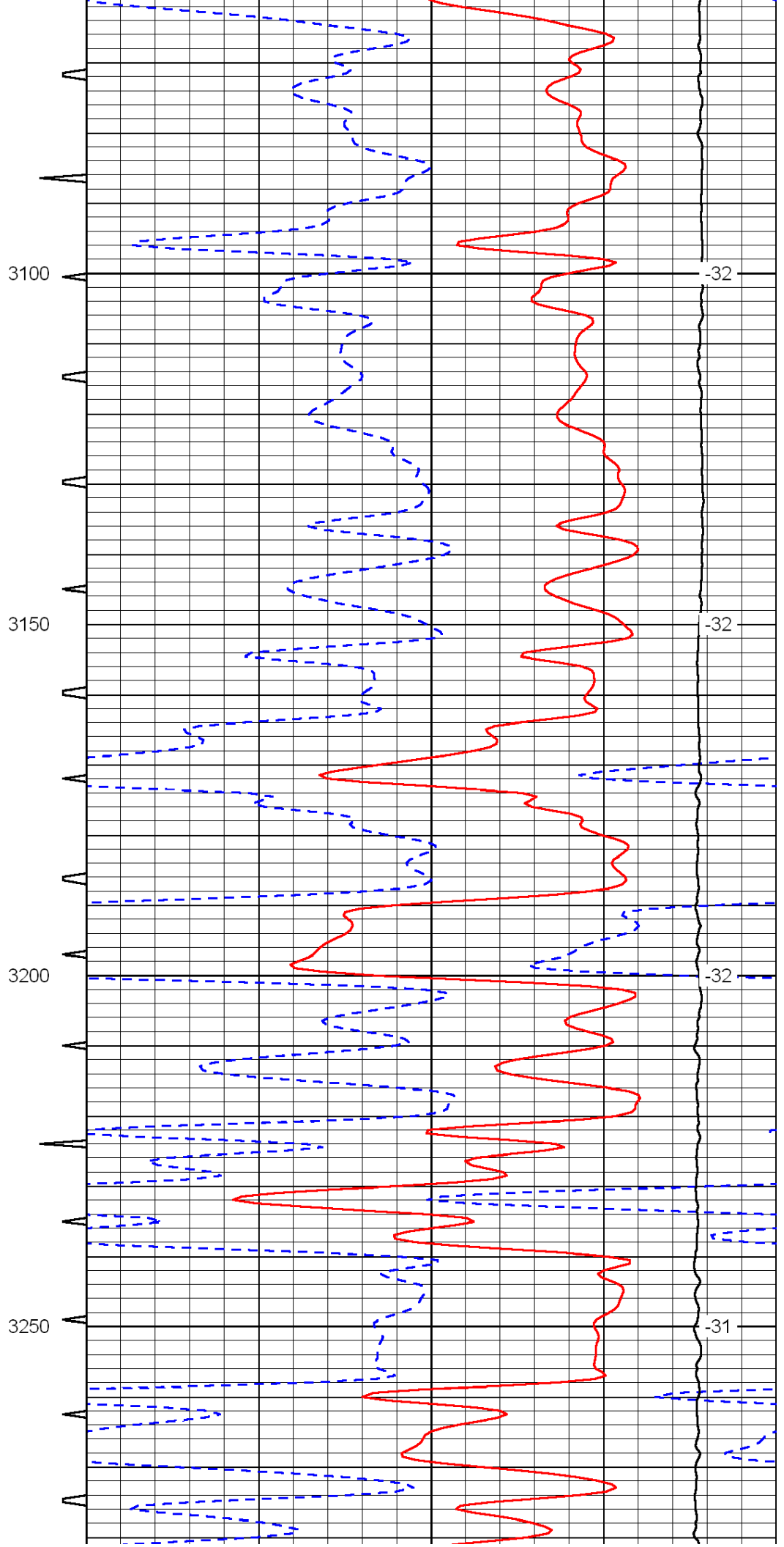
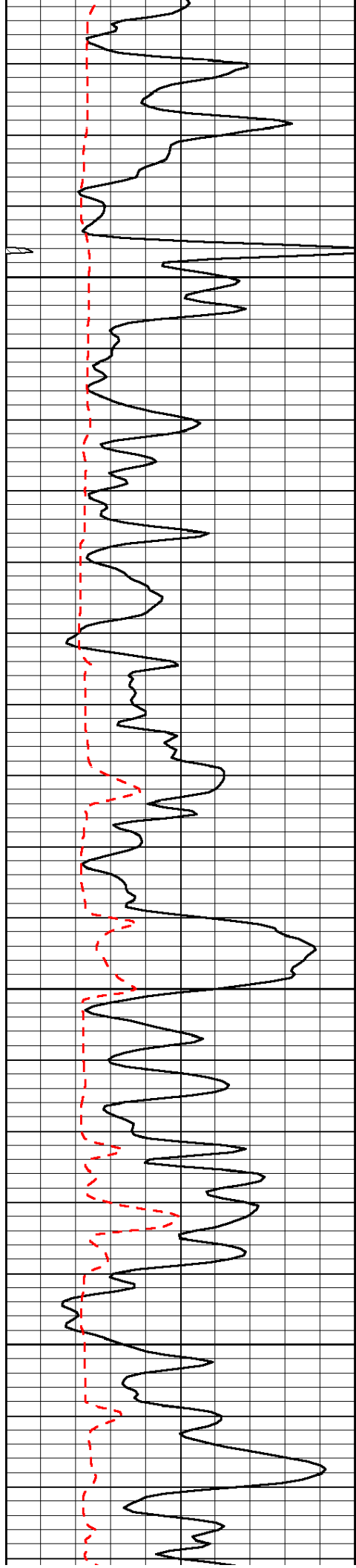


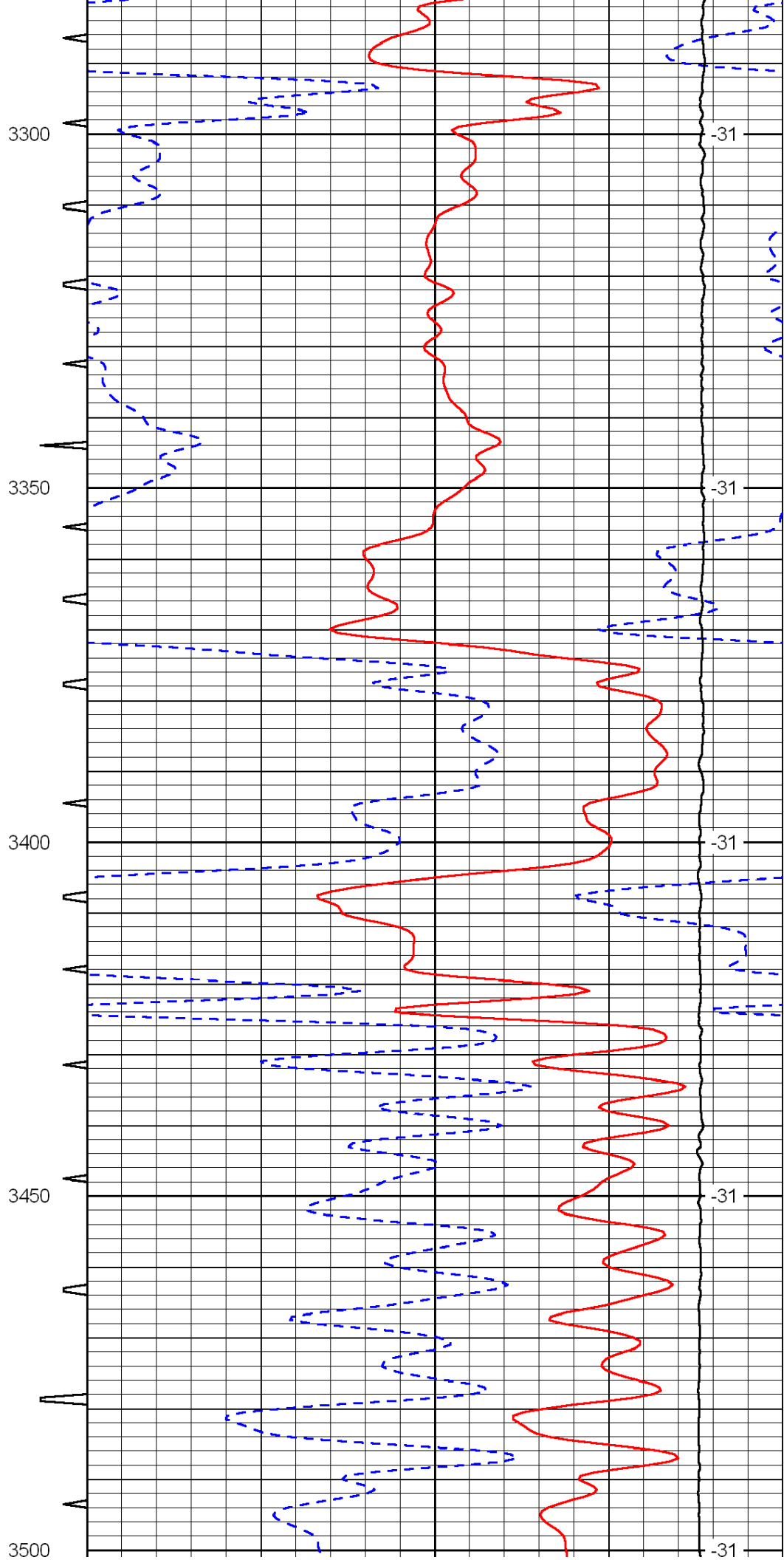
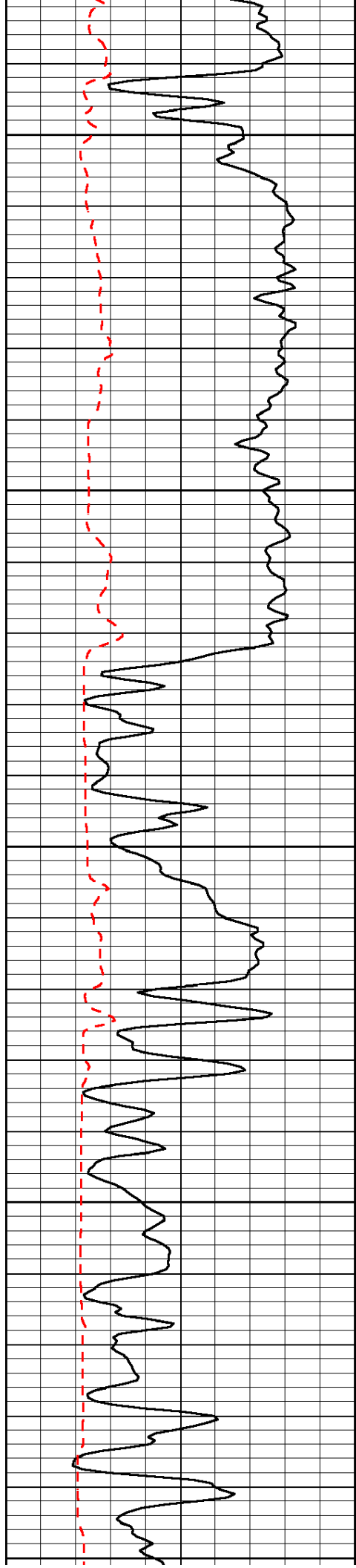


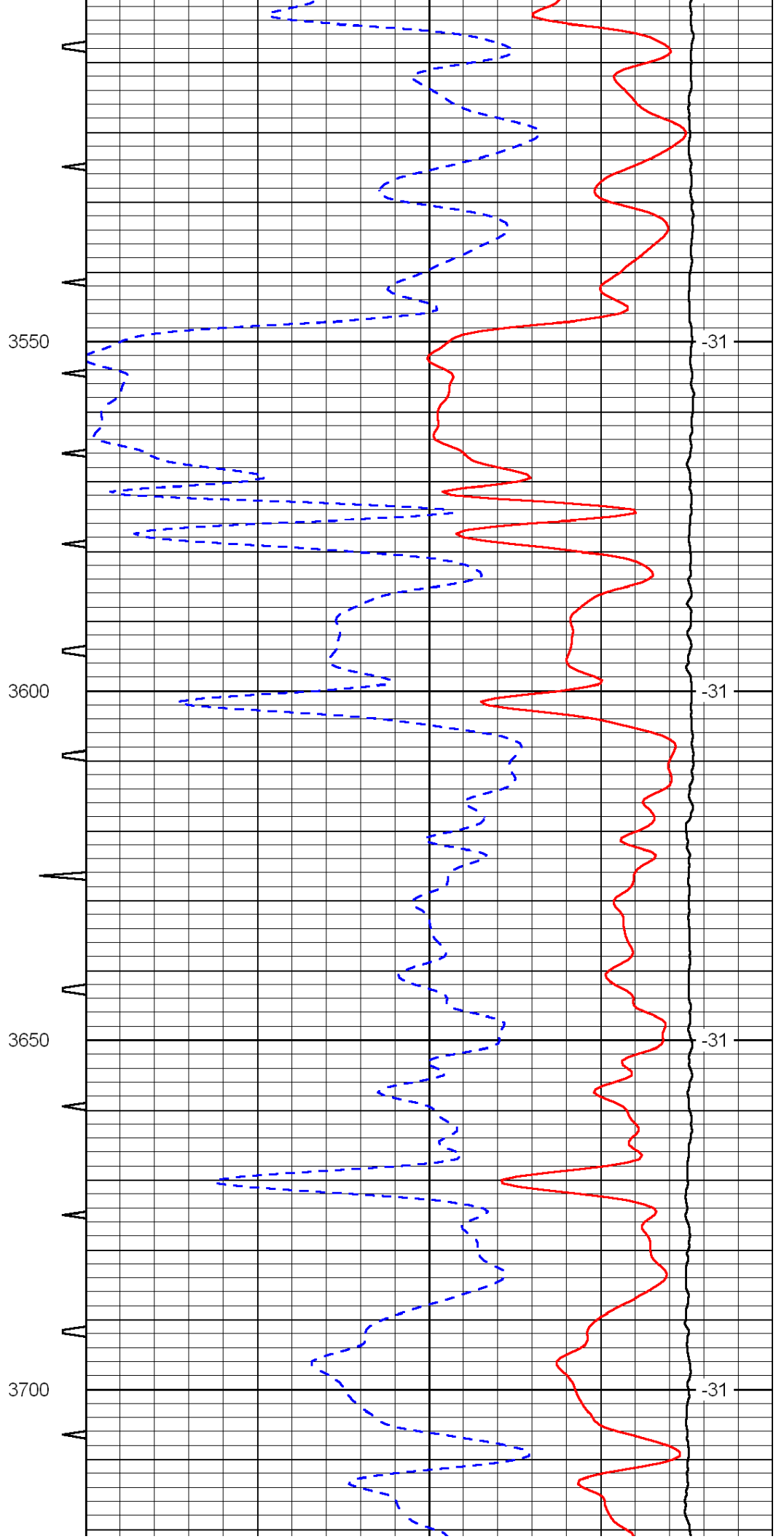
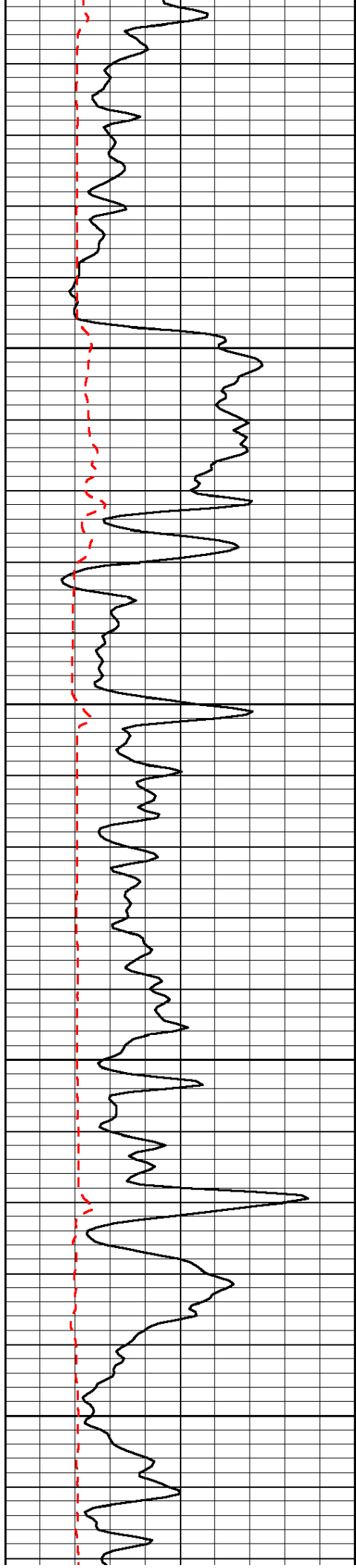


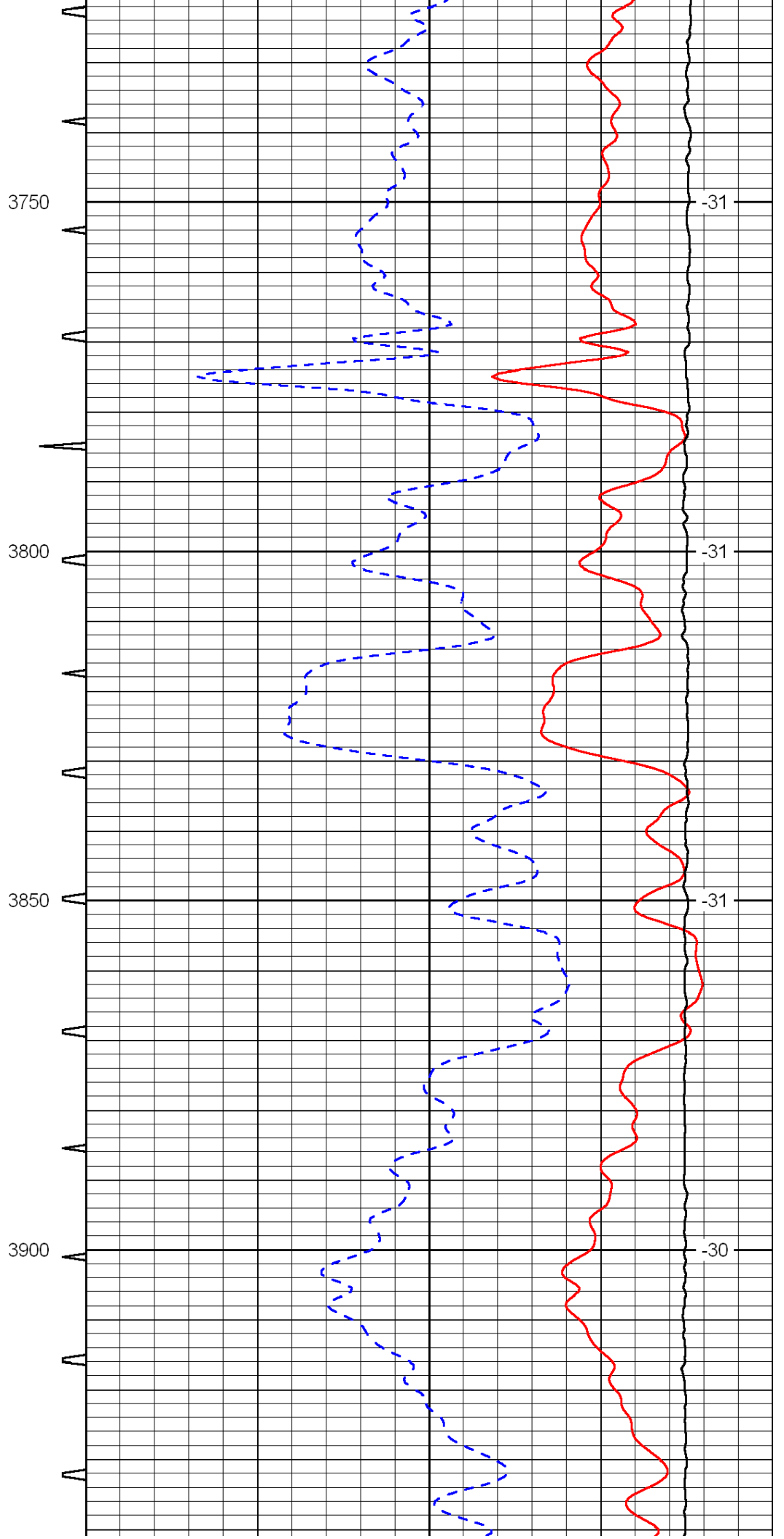
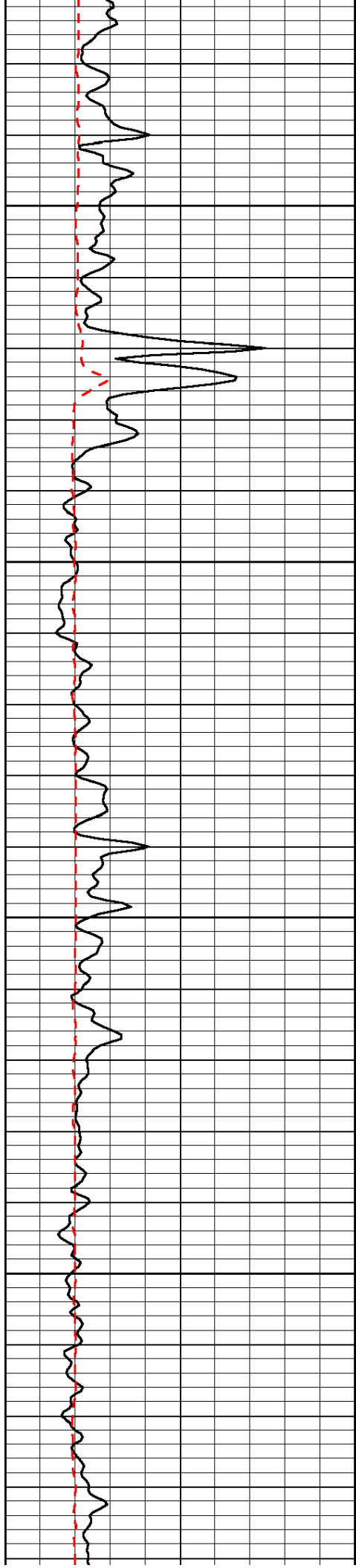


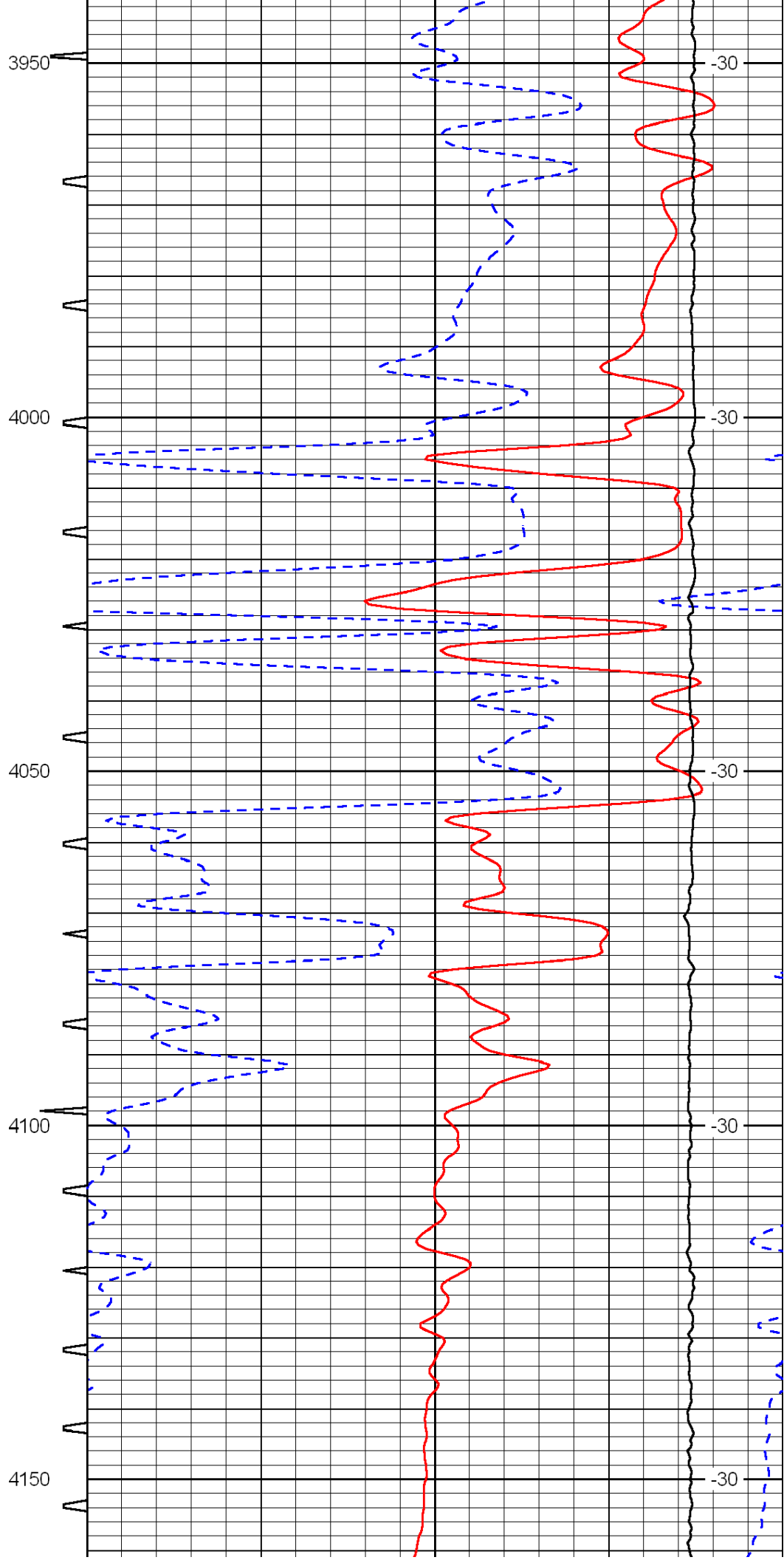
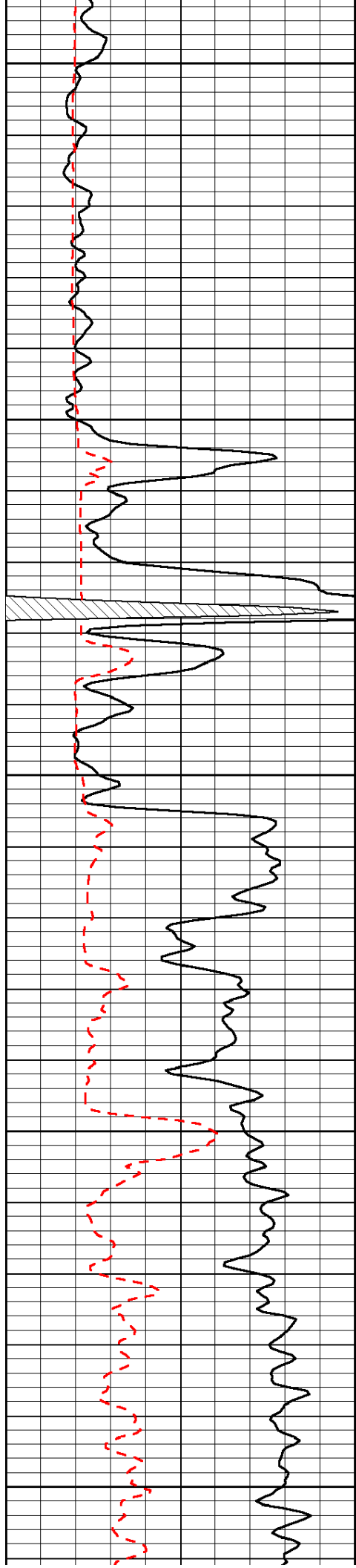


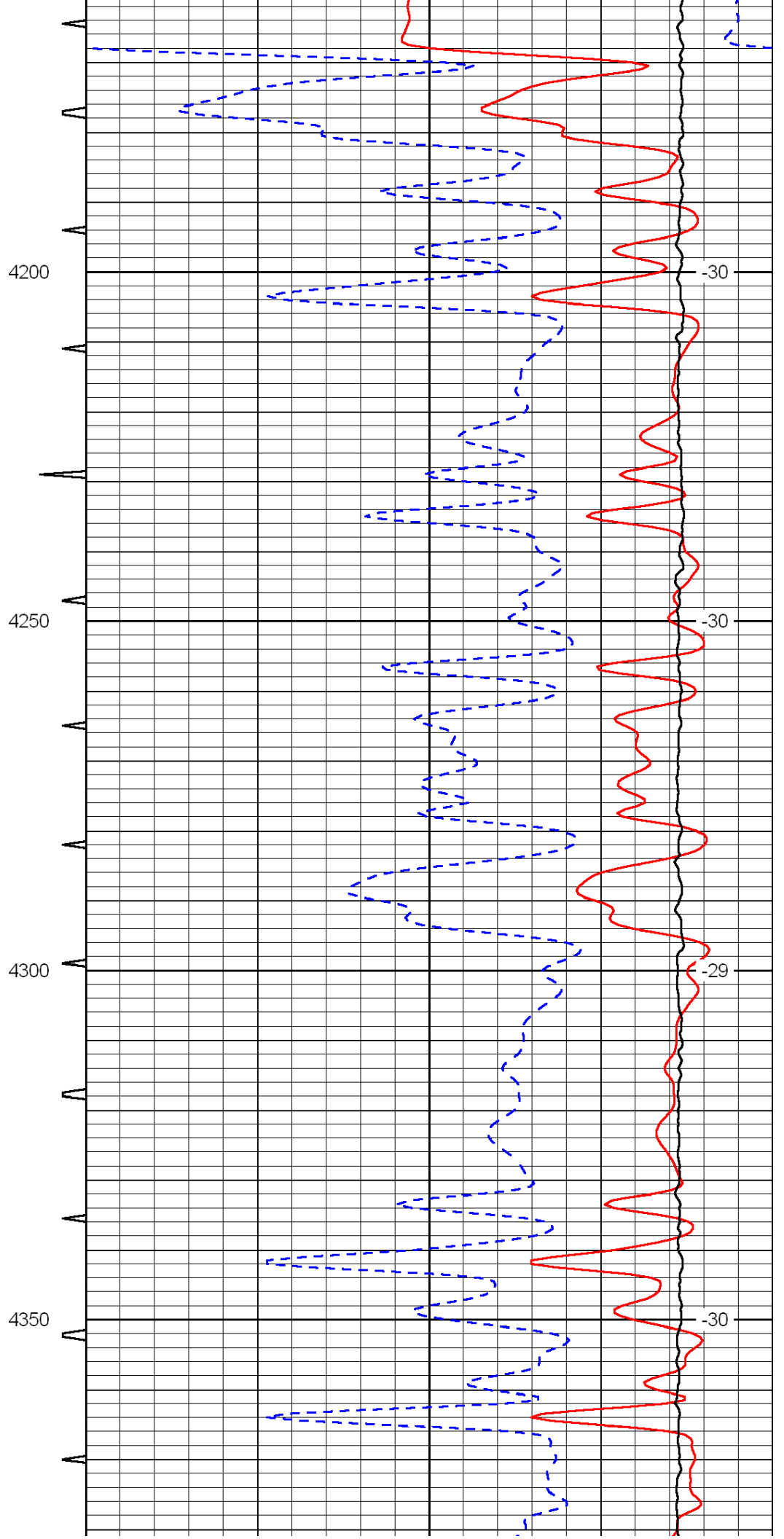
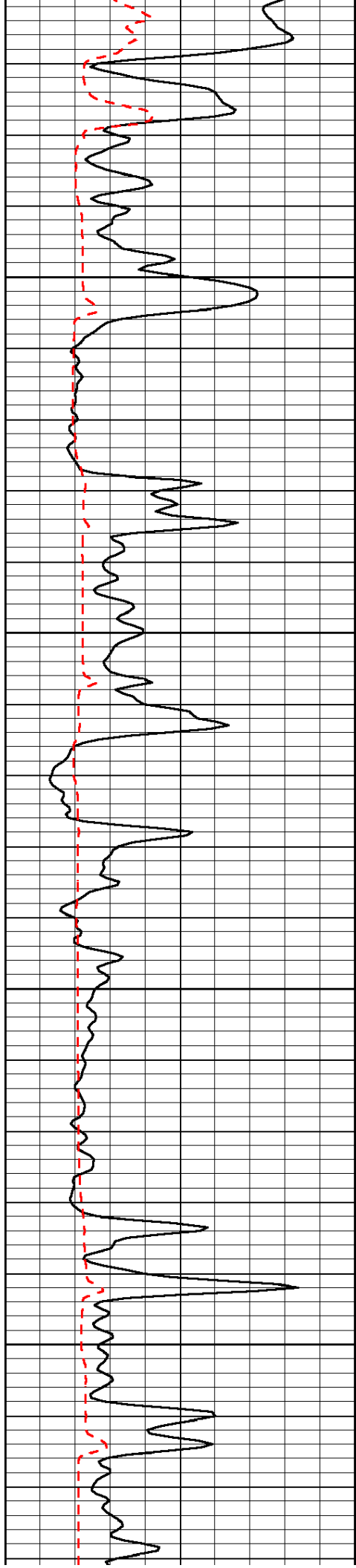


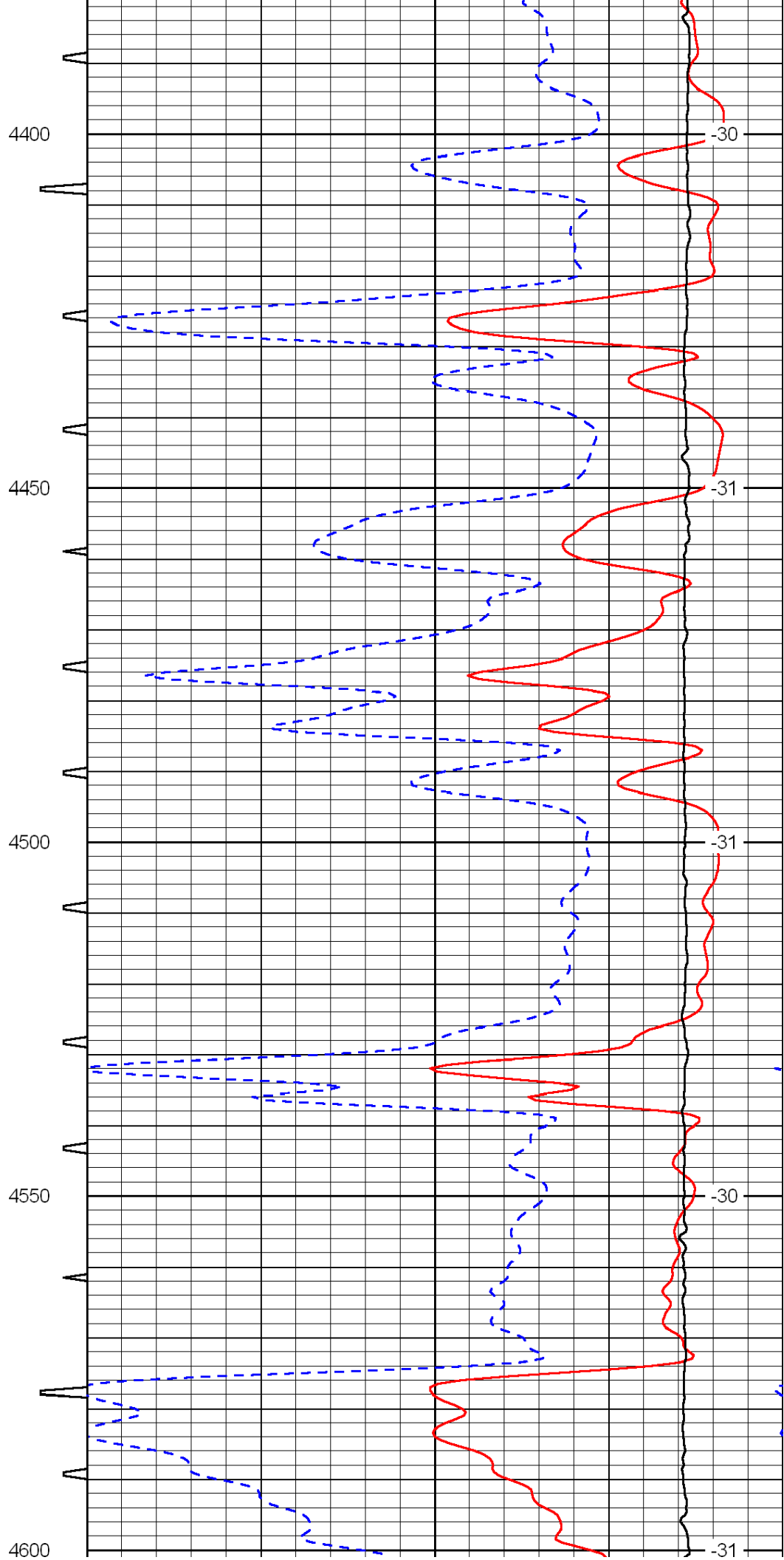
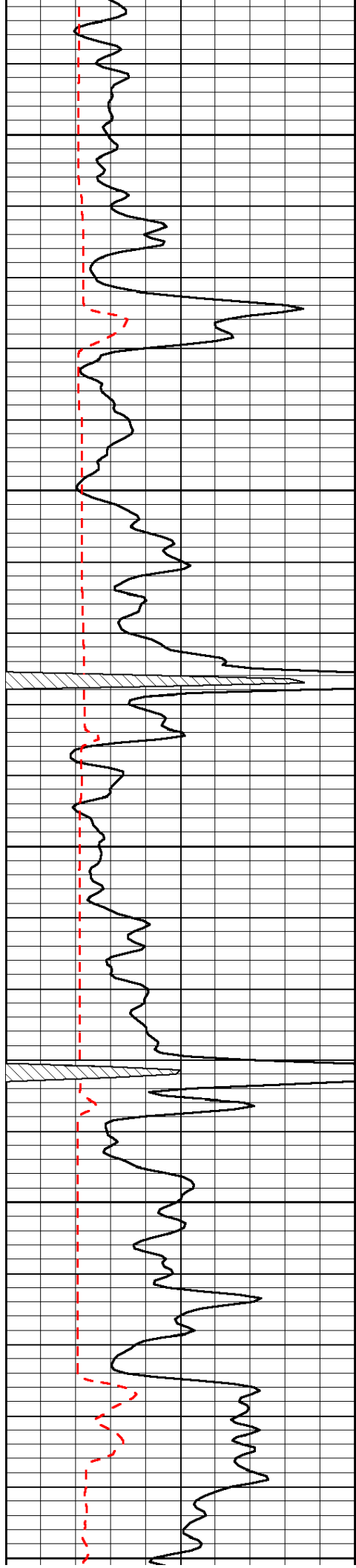


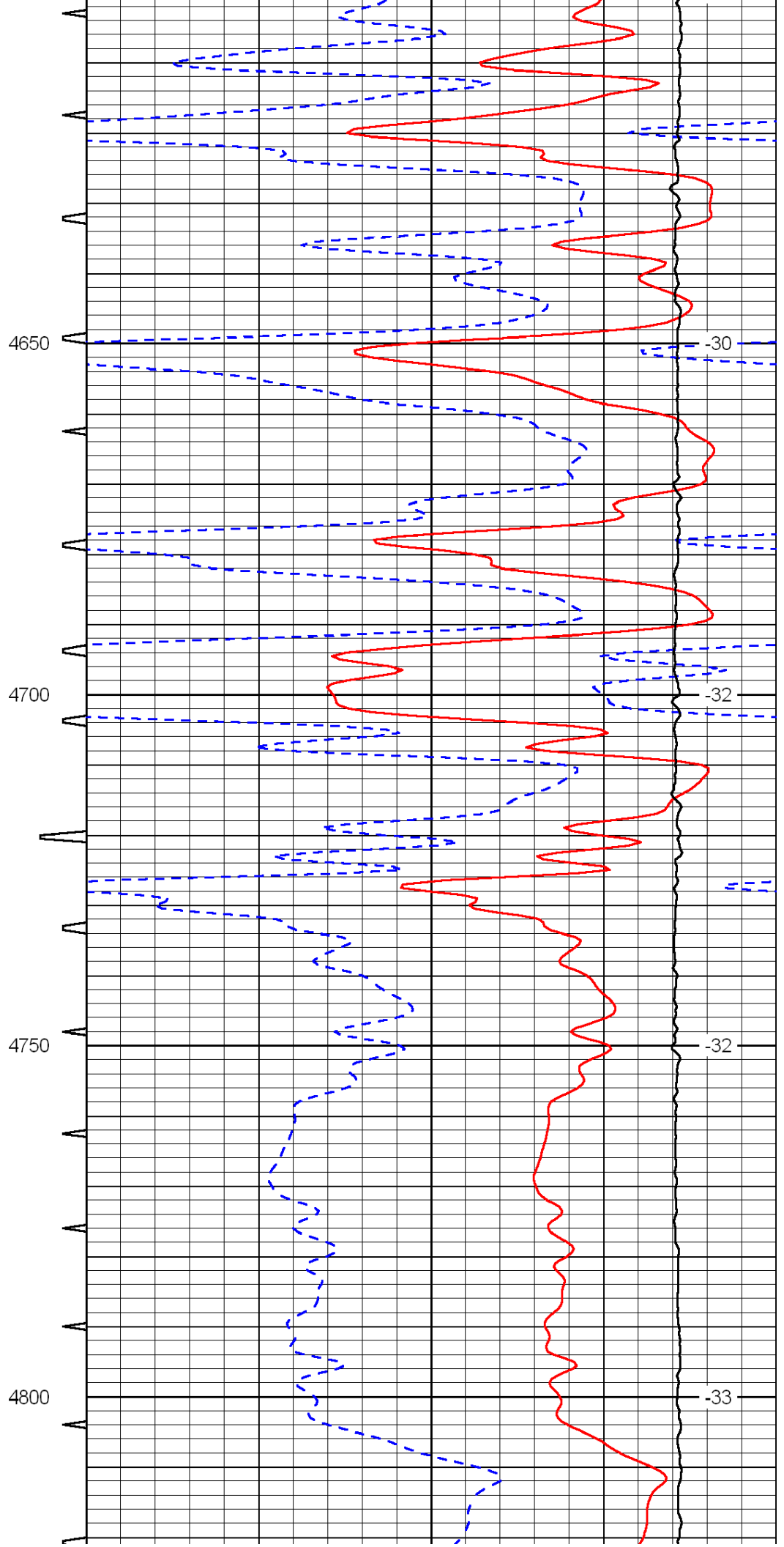
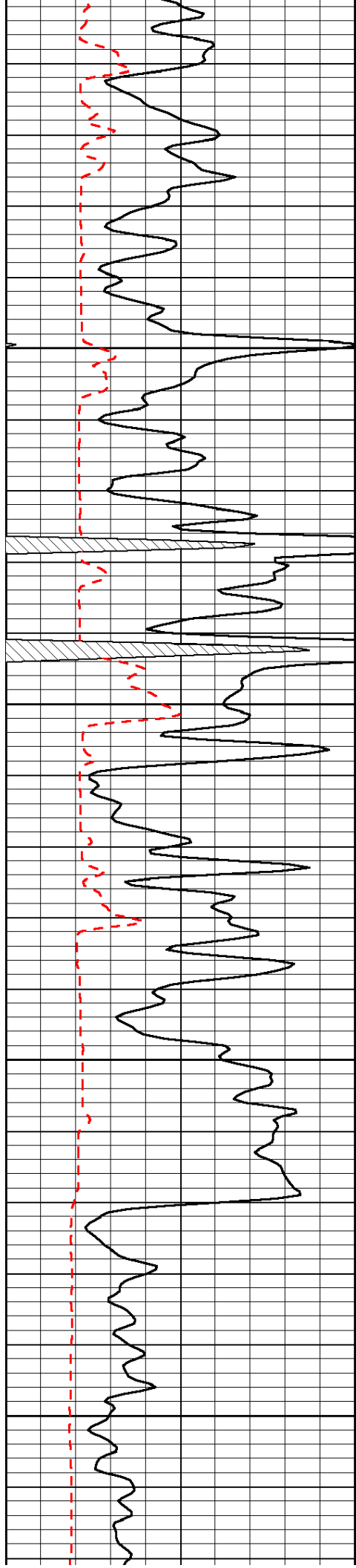


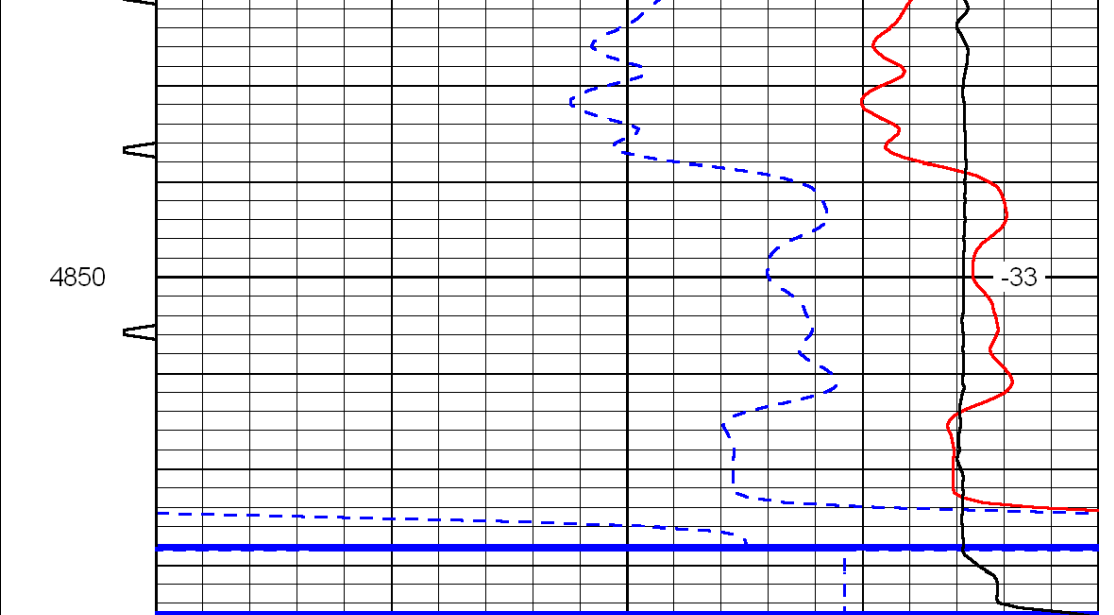
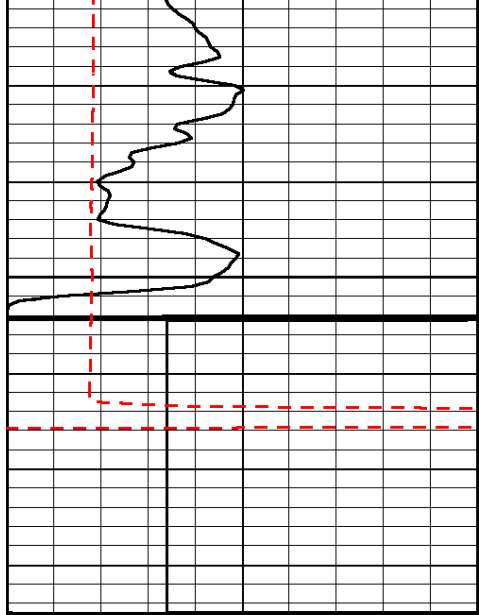












0	Gamma Ray	150	Sonic Int	140	Delta Time (usec/ft)	40
150	Gamma Ray	300	5	0	SPOR	-10
6	Caliper (GAPI)	16		15000	LTEN (lb)	0
LSPD						