



DIGITAL LOG (785) 625-3858

**Microresistivity
Log**

API No.	15-097-21,673-00-00		
Company	L.D. Drilling, Inc.		
Well	Anthony No.1-27		
Field	Kiowa State Kansas		
County	Kiowa State Kansas		
Location	E/2 E/2 NW SW 1980' FSL & 1300' FWL		
Sec:	27	Twp:	27S Rge: 18W
Permanent Datum	Ground Level	Elevation	2182
Log Measured From	Kelly Bushing	12 Ft. Above Perm. Datum	
Drilling Measured From	Kelly Bushing		
		Other Services	CNL/CDL DIL/BHCS
		Elevation	K.B. 2194 D.F. 2182 G.L. 2182

Date	5/12/2010
Run Number	Two
Depth Driller	4880
Depth Logger	4879
Bottom Logged Interval	4878
Top Log Interval	2300
Casing Driller	8.625 @ 483
Casing Logger	473
Bit Size	7.875
Type Fluid in Hole	Chemical
Salinity, ppm CL	7.900
Density / Viscosity	9.1 51
pH / Fluid Loss	8.5 10.4
Source of Sample	Flowline
Rm @ Meas. Temp	.7 @ 58
Rmf @ Meas. Temp	.53 @ 58
Rmc @ Meas. Temp	.95 @ 58
Source of Rmf / Rmc	Charts
Rm @ BHT	.33 @ 125
Operating Rig Time	5 Hours
Max Rec. Temp. F	125
Equipment Number	15
Location	Hays
Recorded By	C. Desaire
Witnessed By	Jim Musgrove

<<< Fold Here >>>

All interpretations are opinions based on inferences from electrical or other measurements and we cannot and do not guarantee the accuracy or correctness of any interpretation, and we shall not, except in the case of gross or willful negligence on our part, be liable or responsible for any loss, costs, damages, or expenses incurred or sustained by anyone resulting from any interpretation made by any of our officers, agents or employees. These interpretations are also subject to our general terms and conditions set out in our current Price Schedule.

Comments

Thank you for using Log-Tech, Inc.
(785) 625-3858

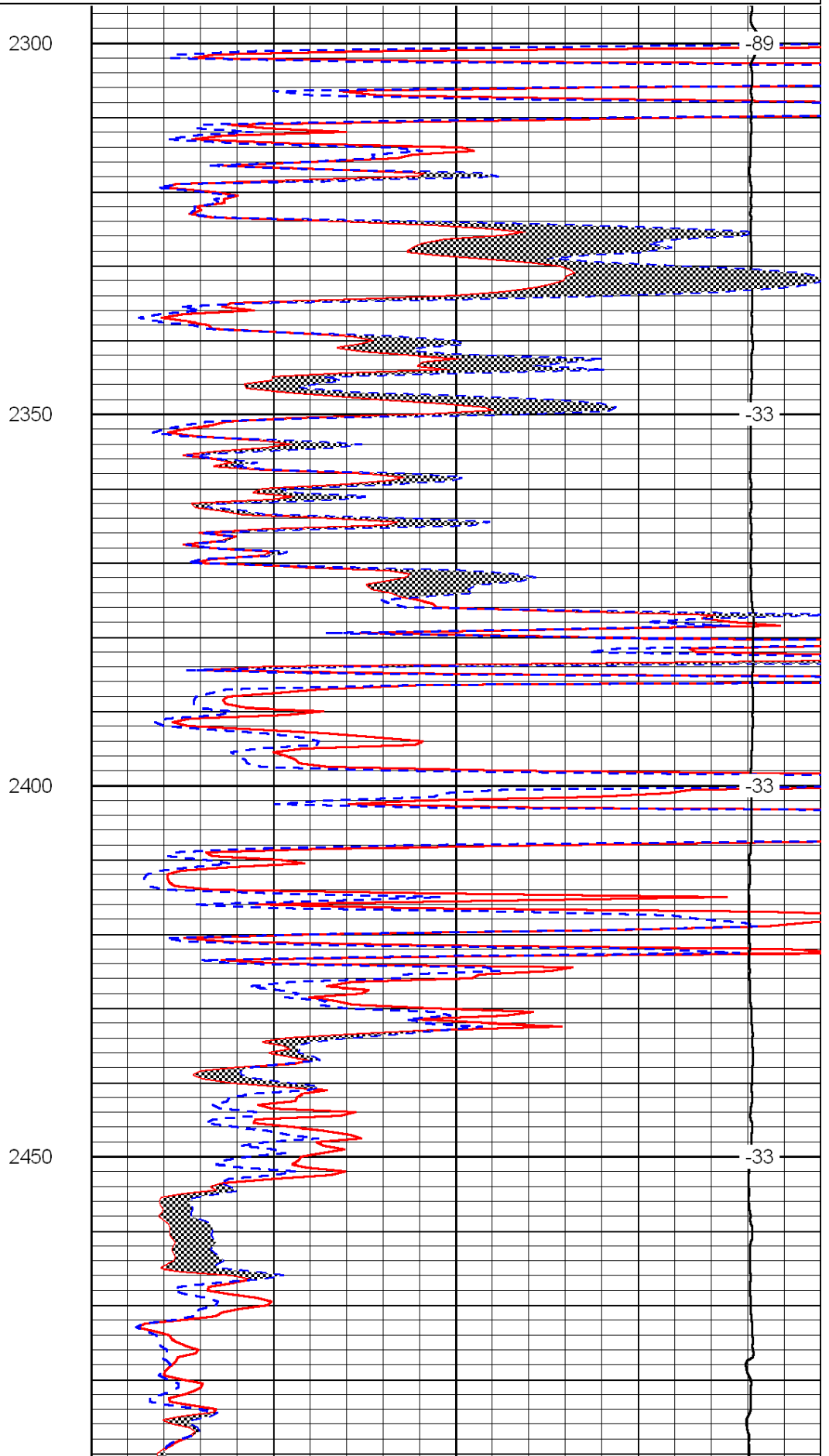
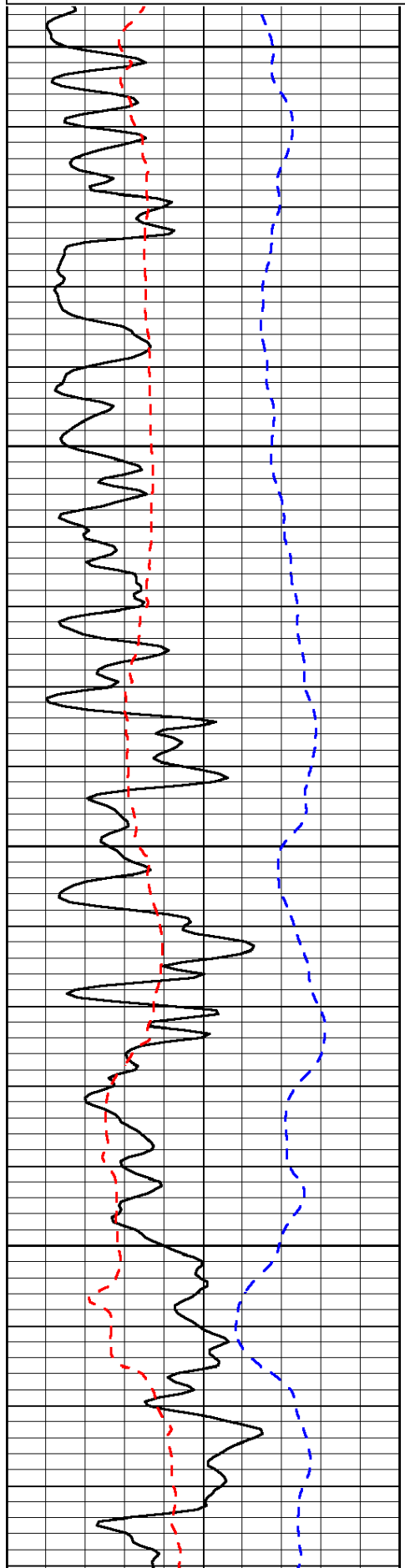
Greensburg, 3 1/2 N of Stoplight, E Into

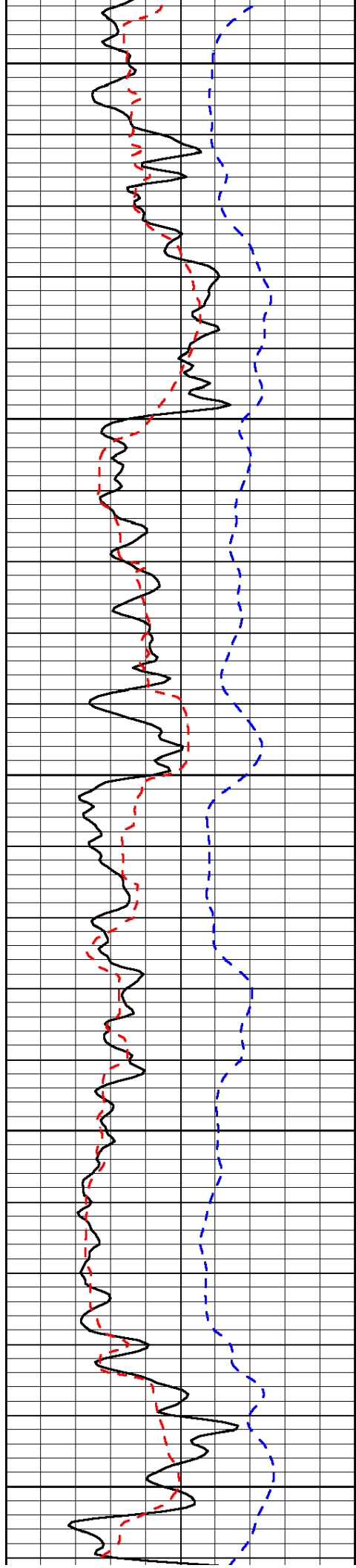
Database File: c:\warrior\data\ld drilling_anthony no.1-27\ldhd.db
 Dataset Pathname: dil\ldstk2
 Presentation Format: micro
 Dataset Creation: Thu May 13 12:04:53 2010
 Charted by: Depth in Feet scaled 1:240

0	Gamma Ray	150
6	Micro Log Caliper (GAPI)	16
-200	SP (mV)	0

0	Micro Inverse 1 X 1	40
0	Micro Normal 2"	40
15000	Line Weight	0

LSPD





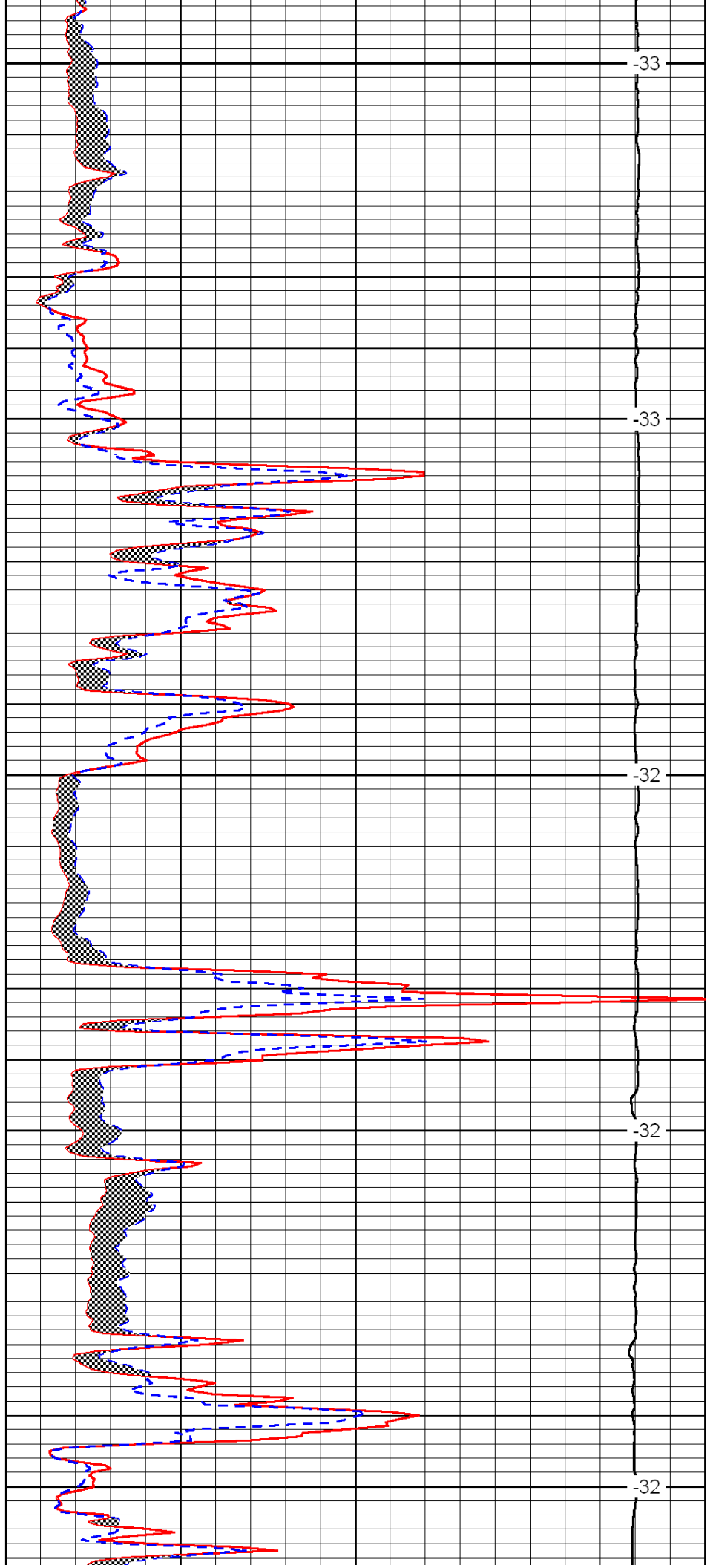
2500

2550

2600

2650

2700



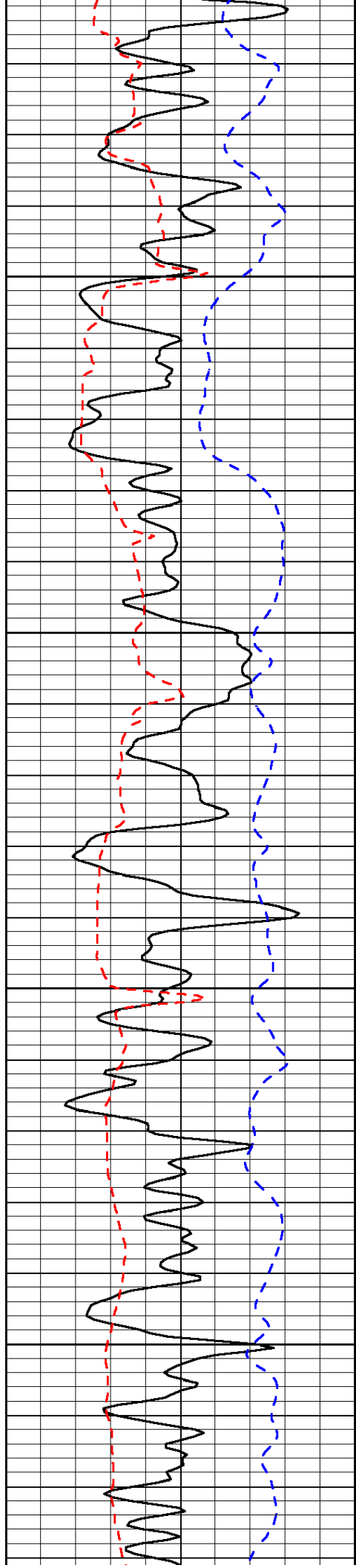
-33

-33

-32

-32

-32

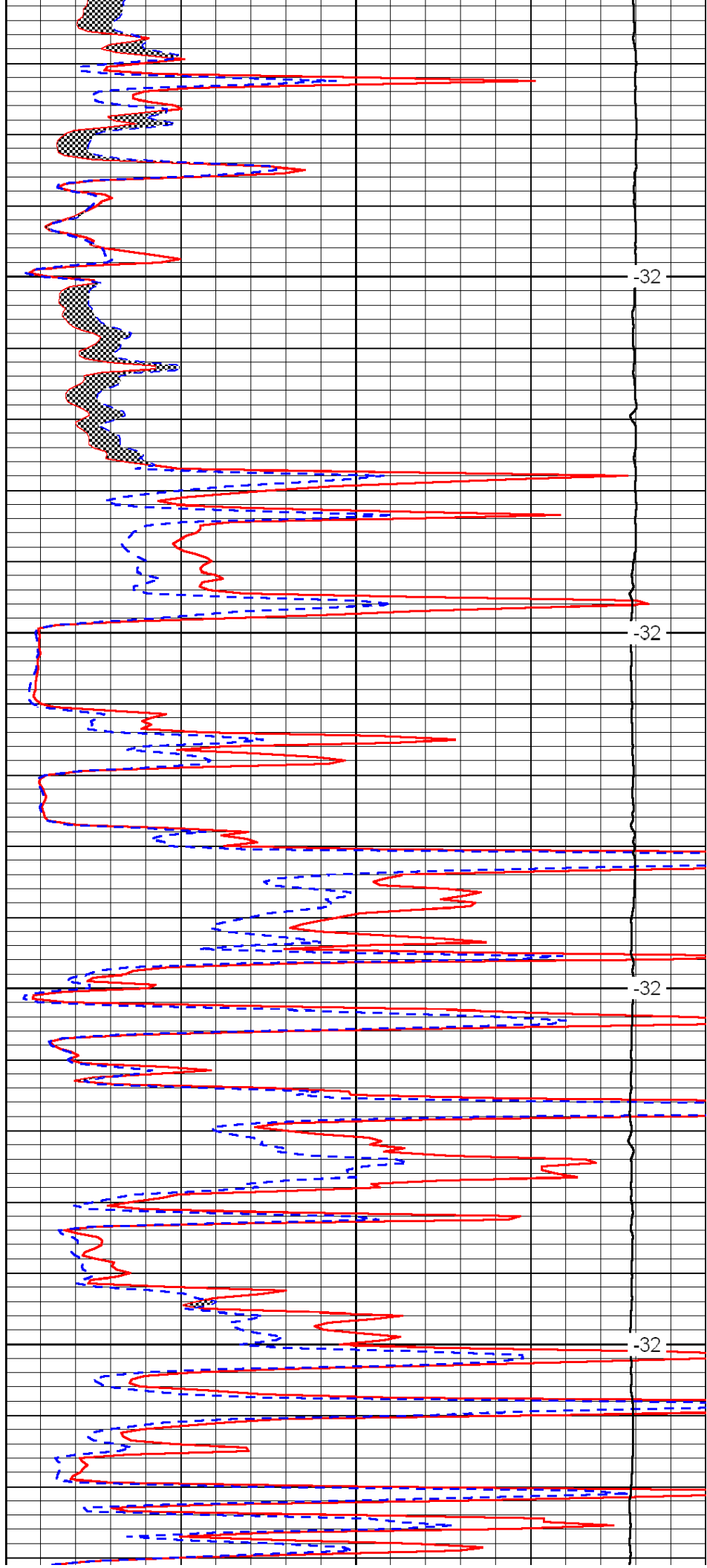


2750

2800

2850

2900

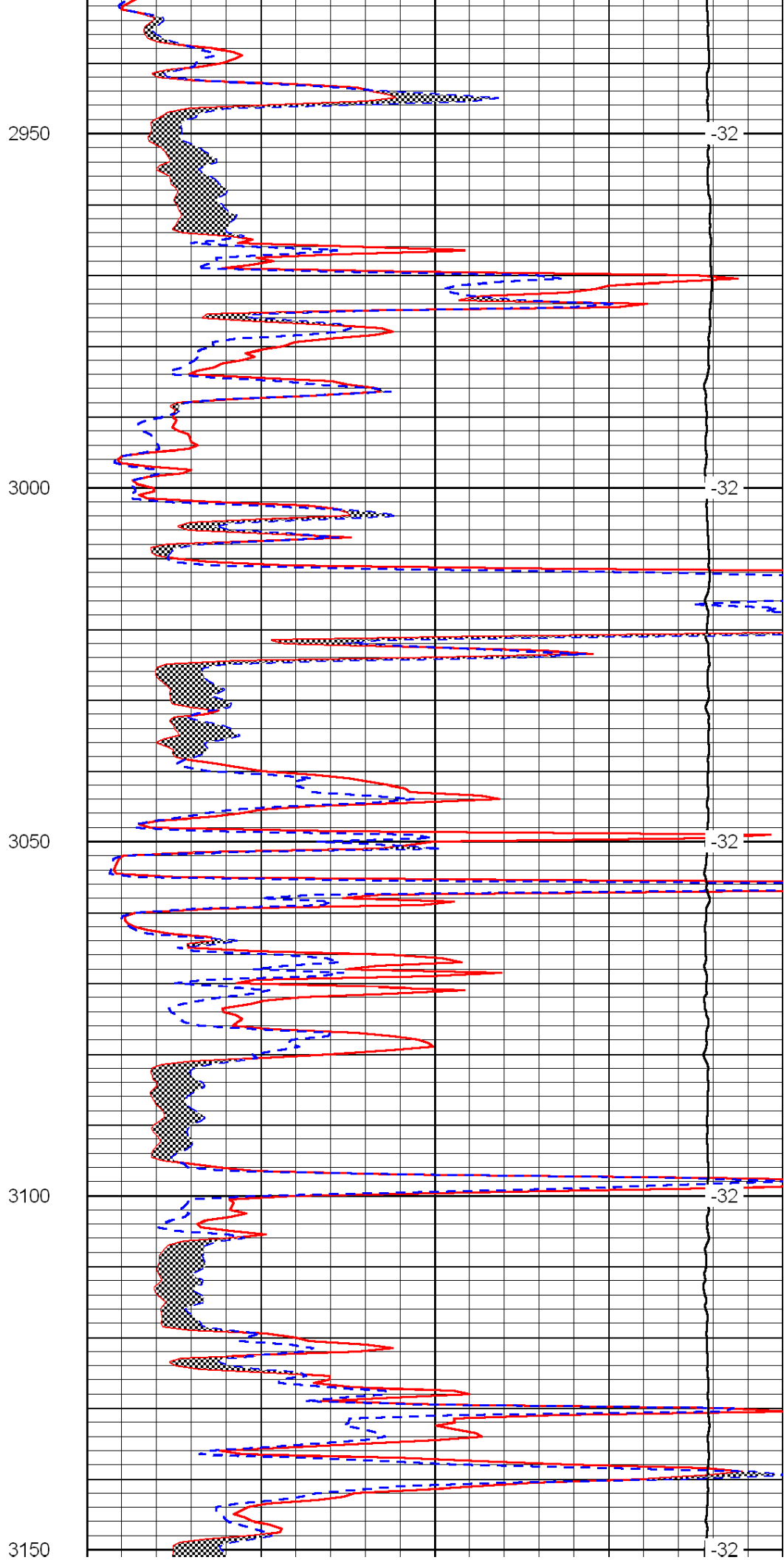
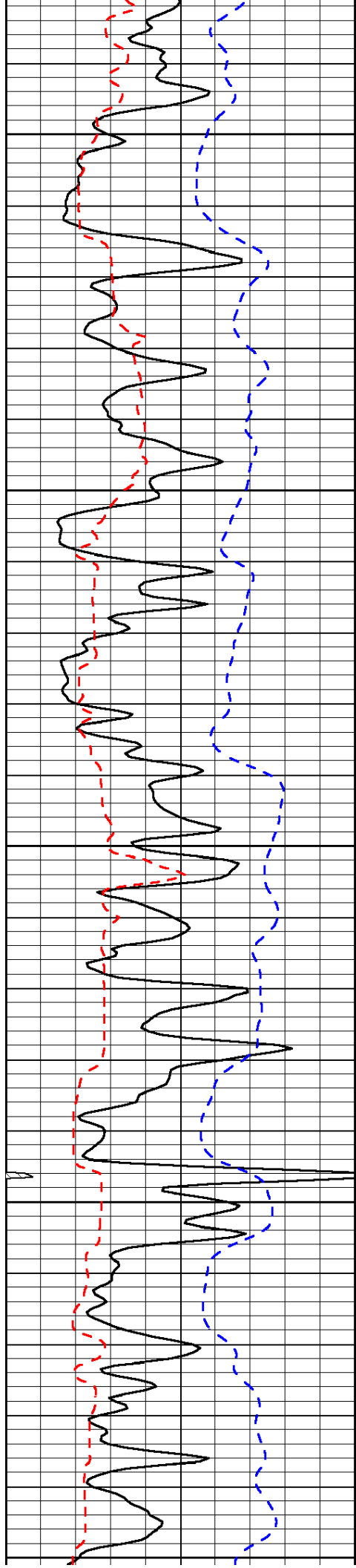


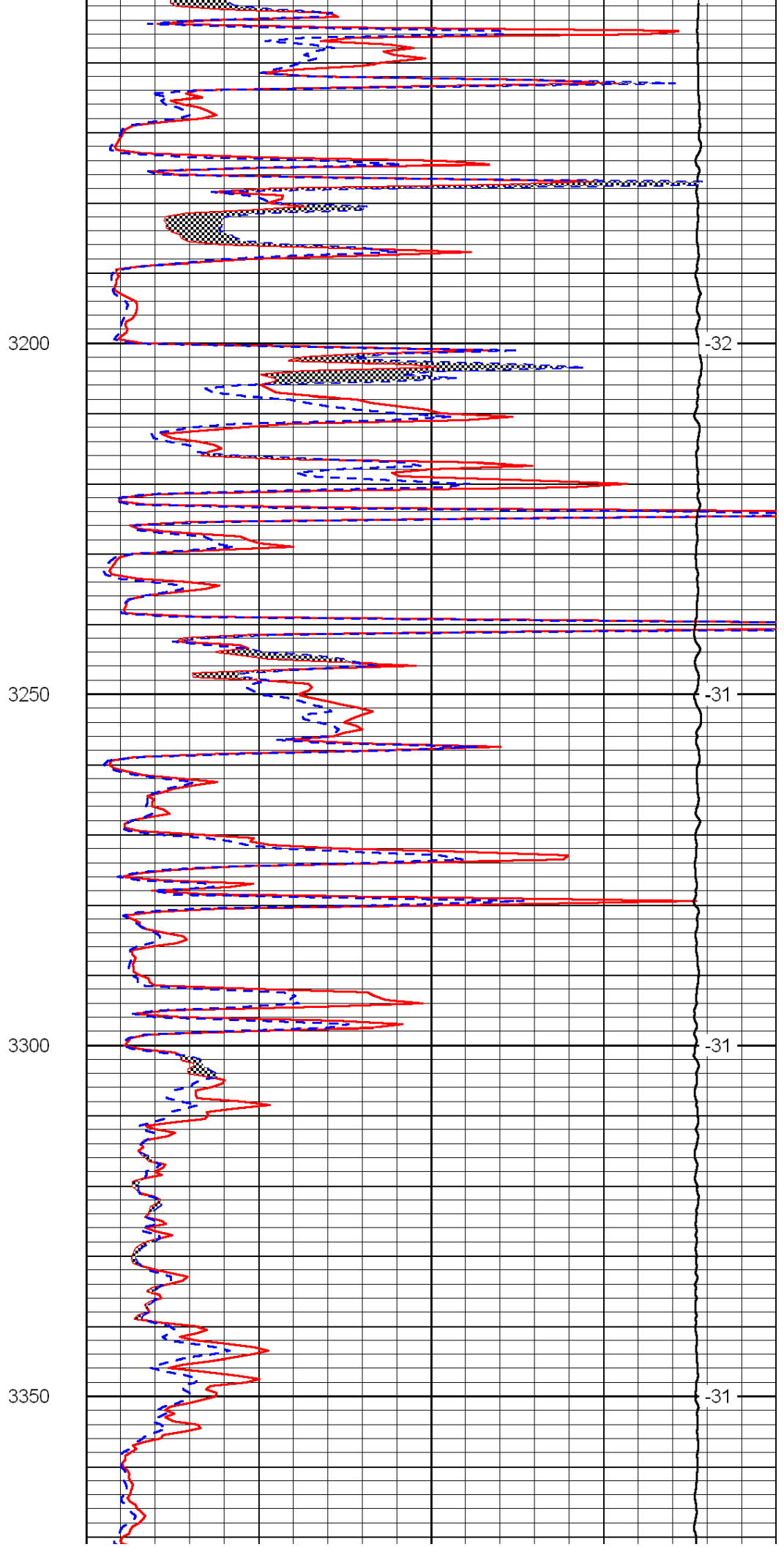
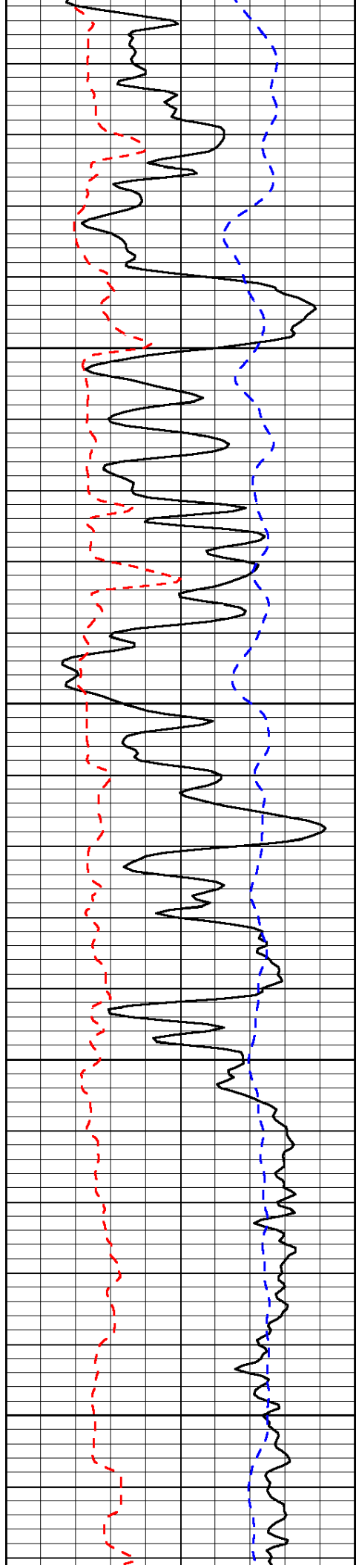
-32

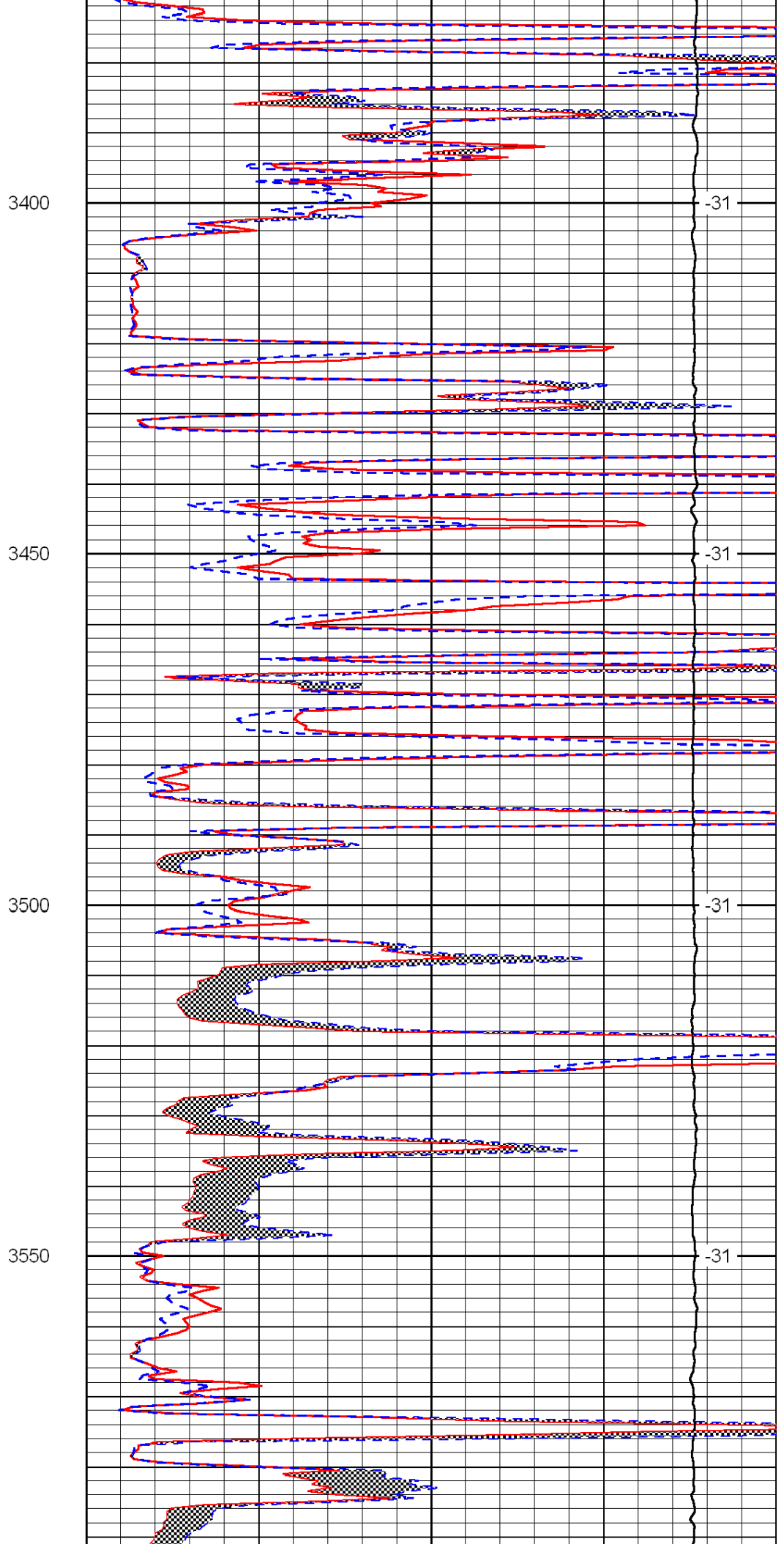
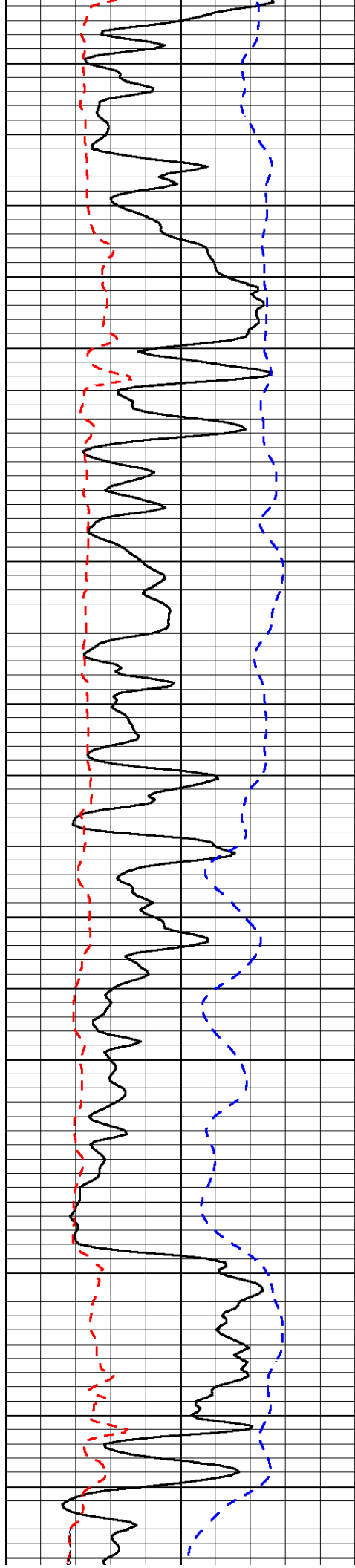
-32

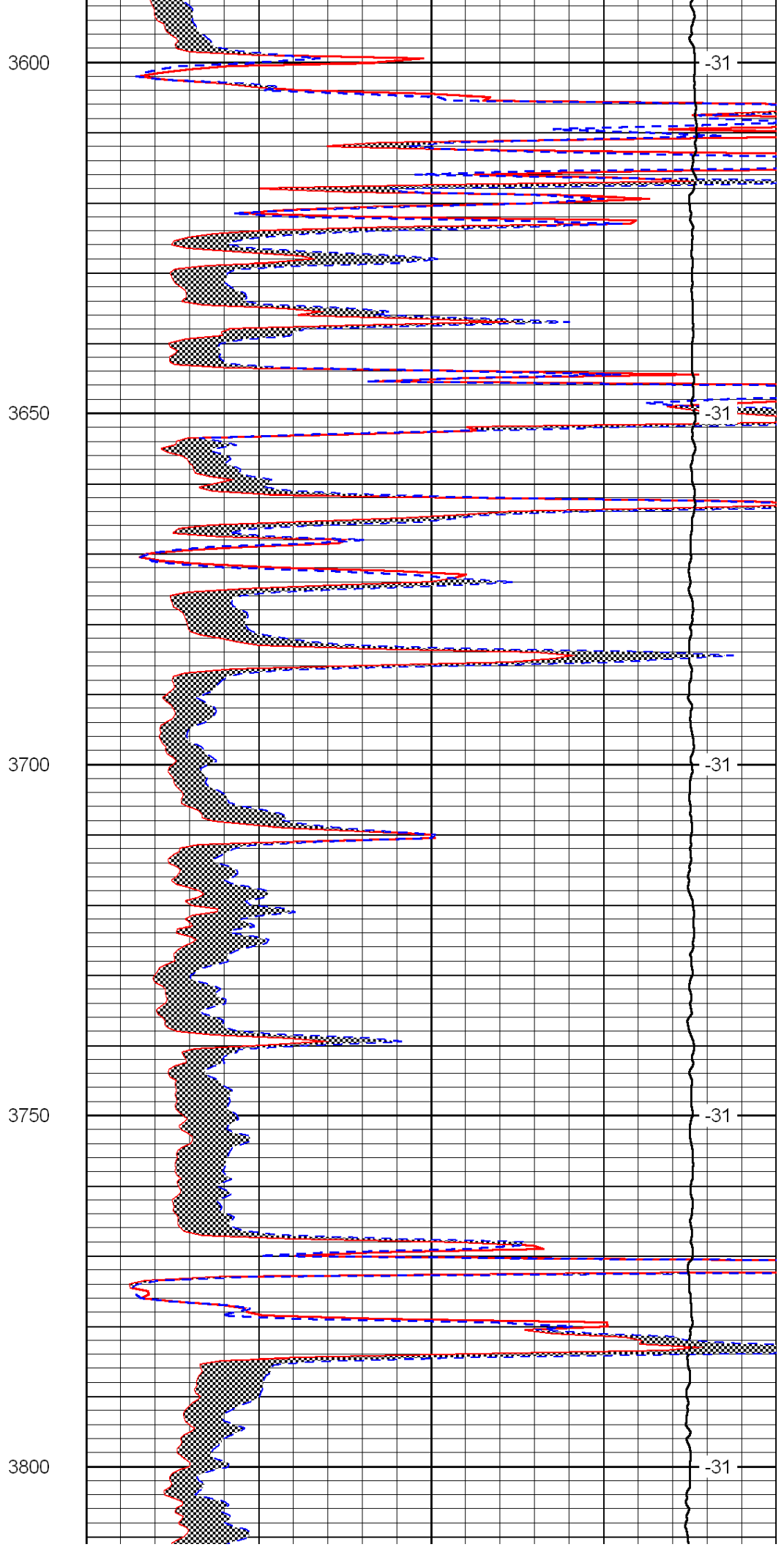
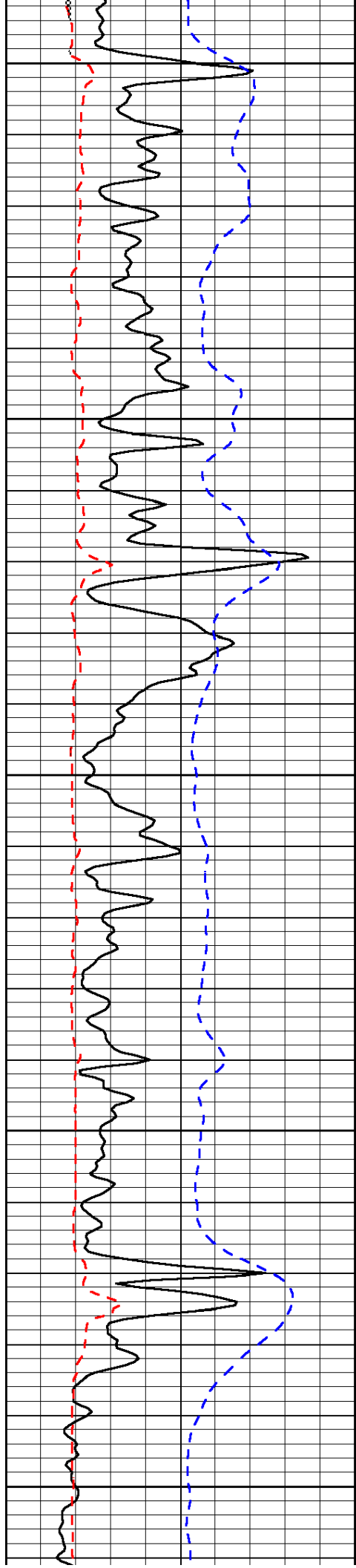
-32

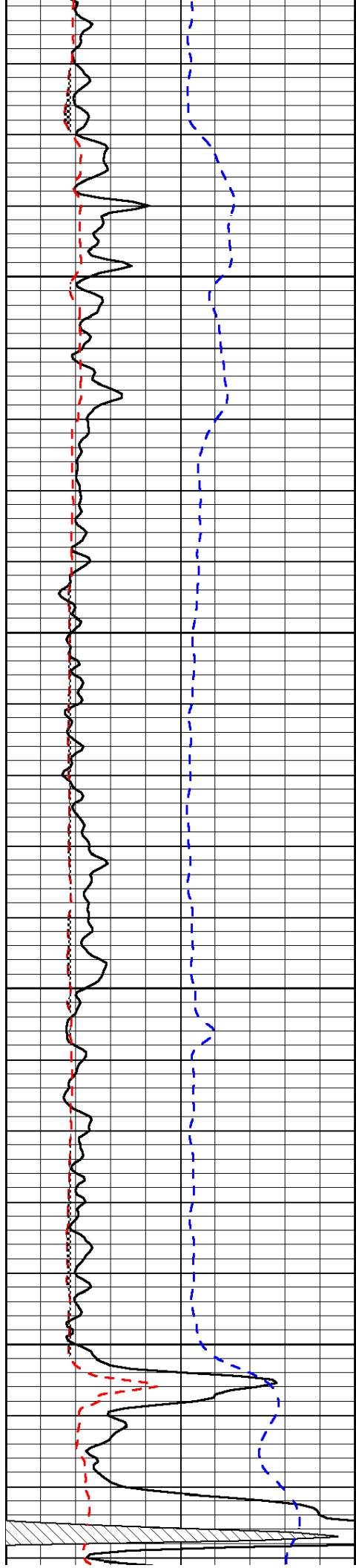
-32









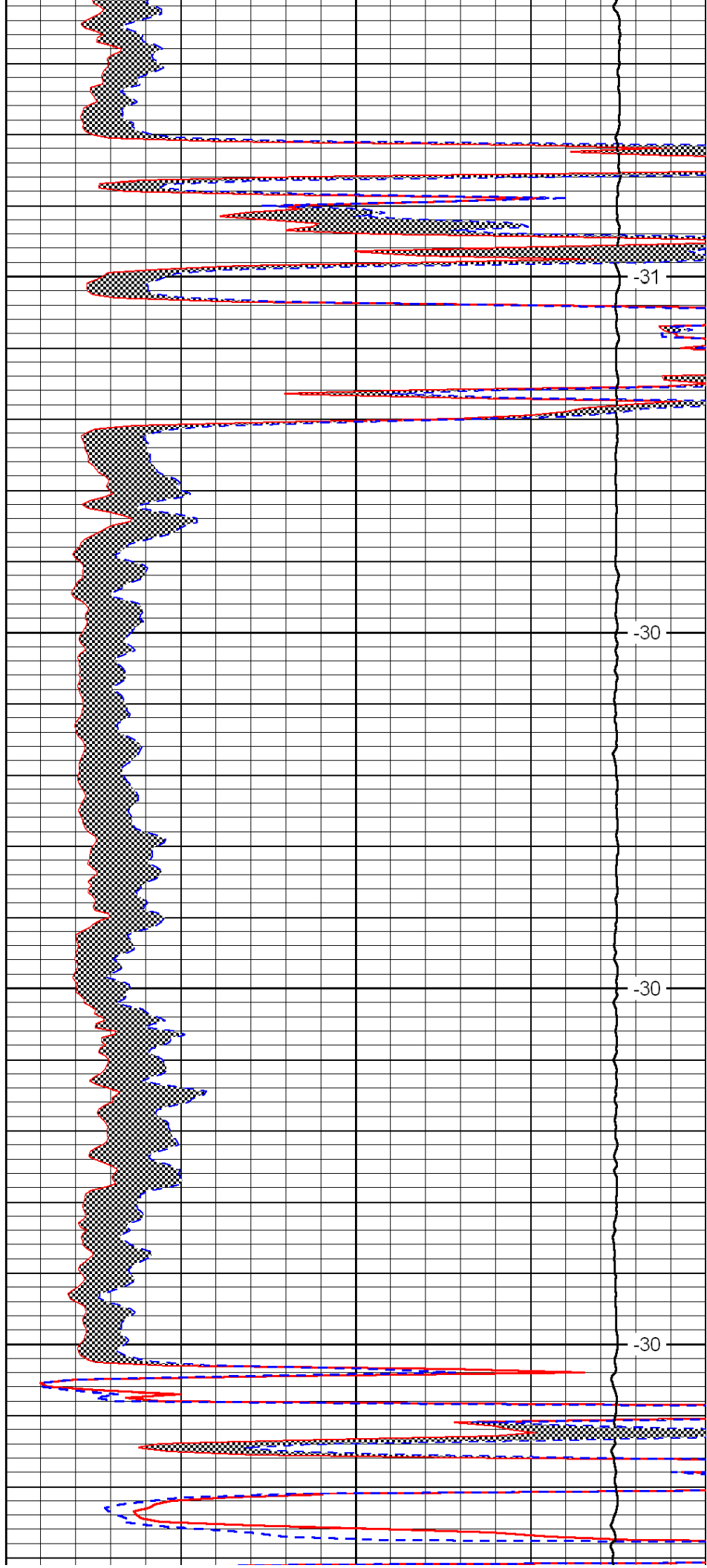


3850

3900

3950

4000

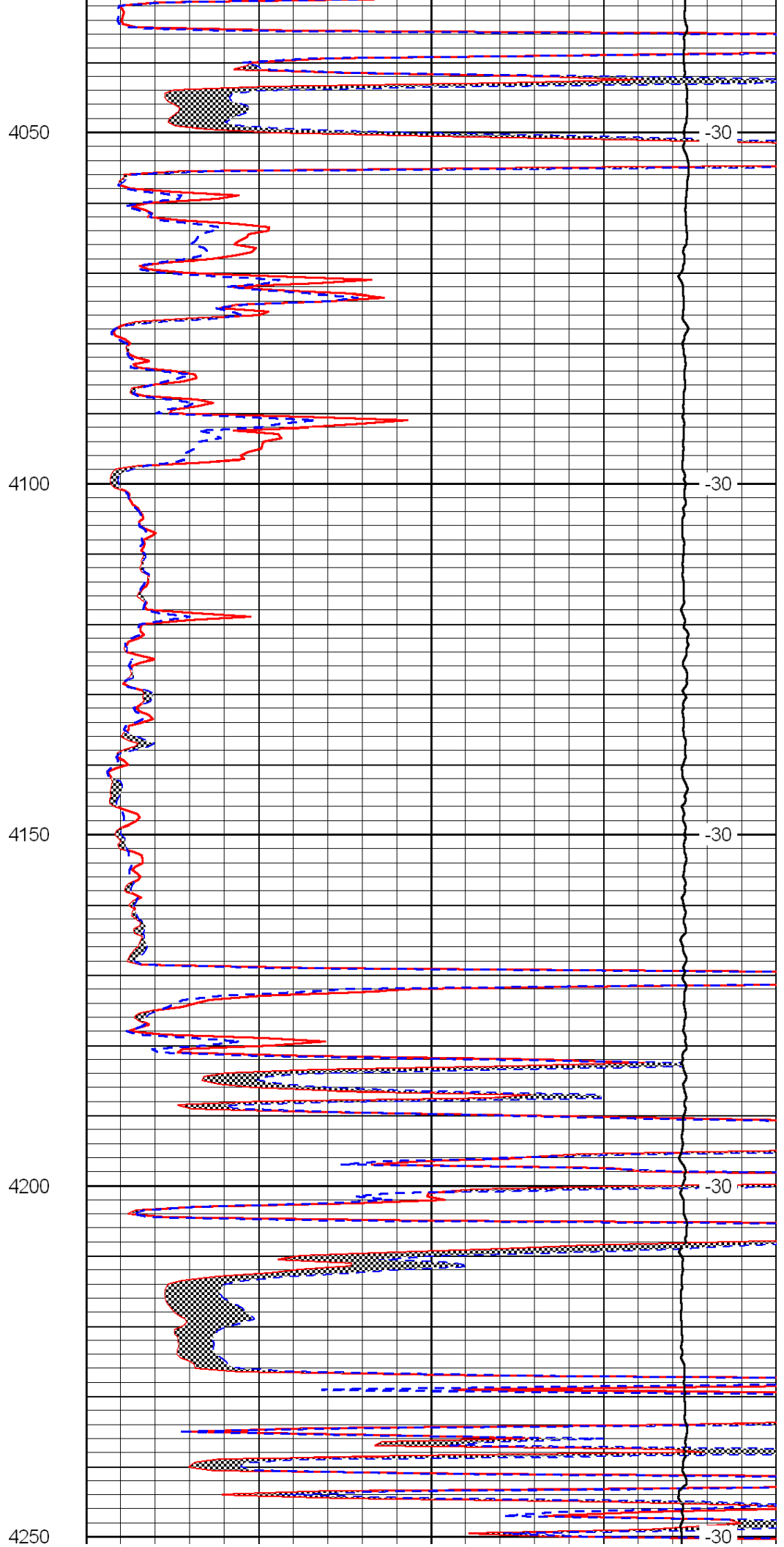
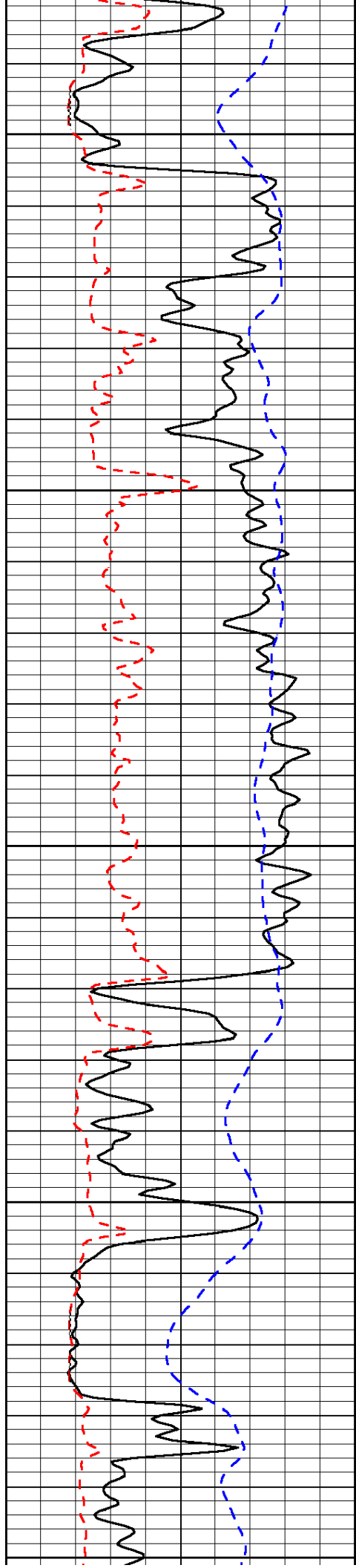


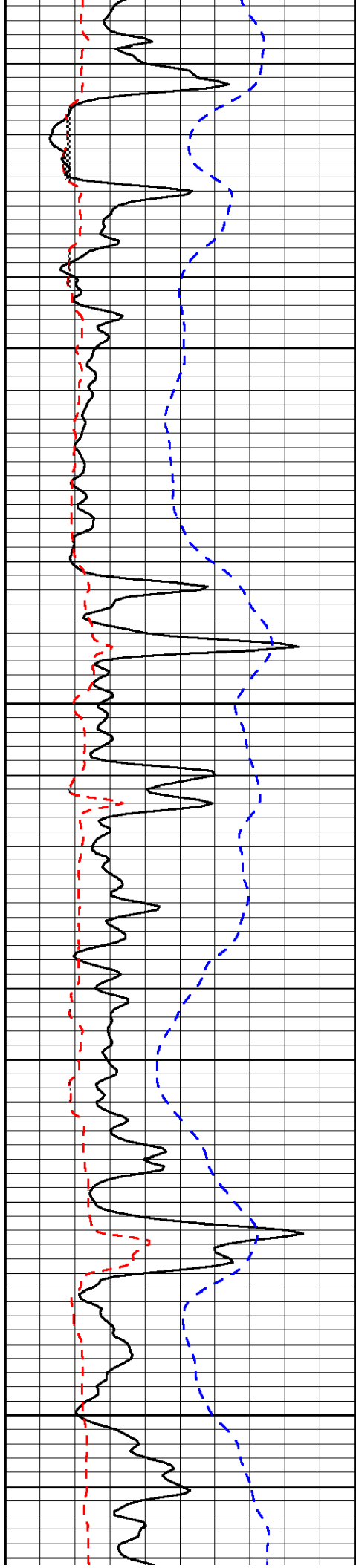
-31

-30

-30

-30



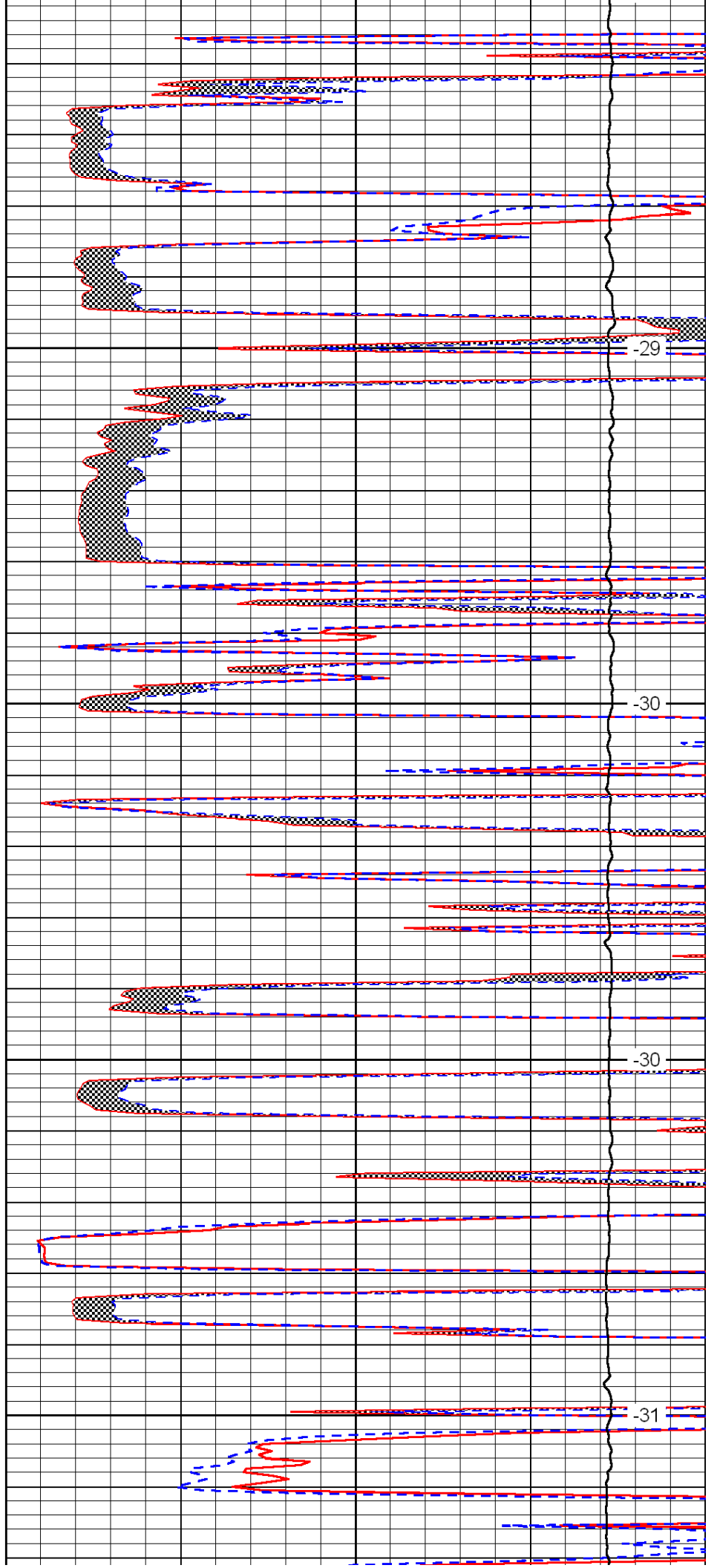


4300

4350

4400

4450

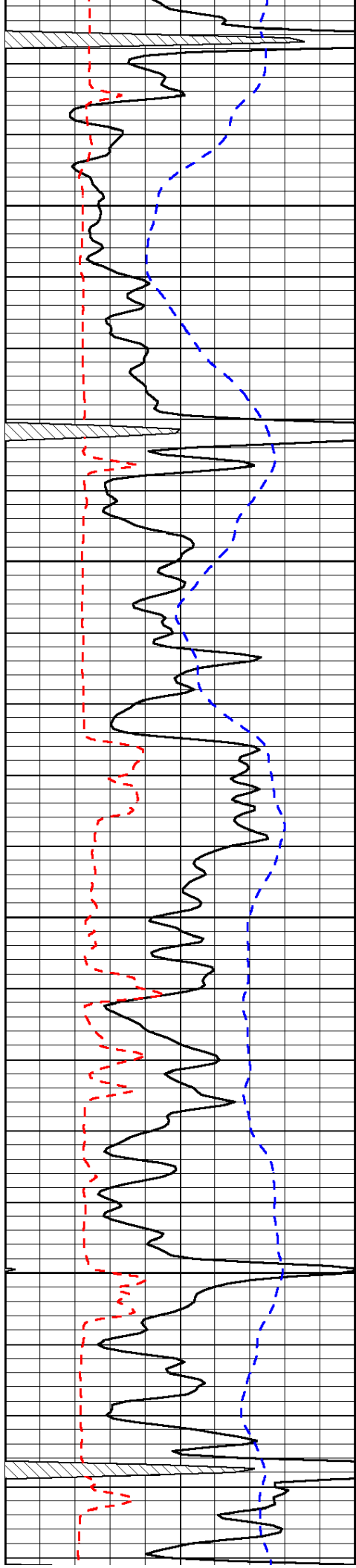


-29

-30

-30

-31

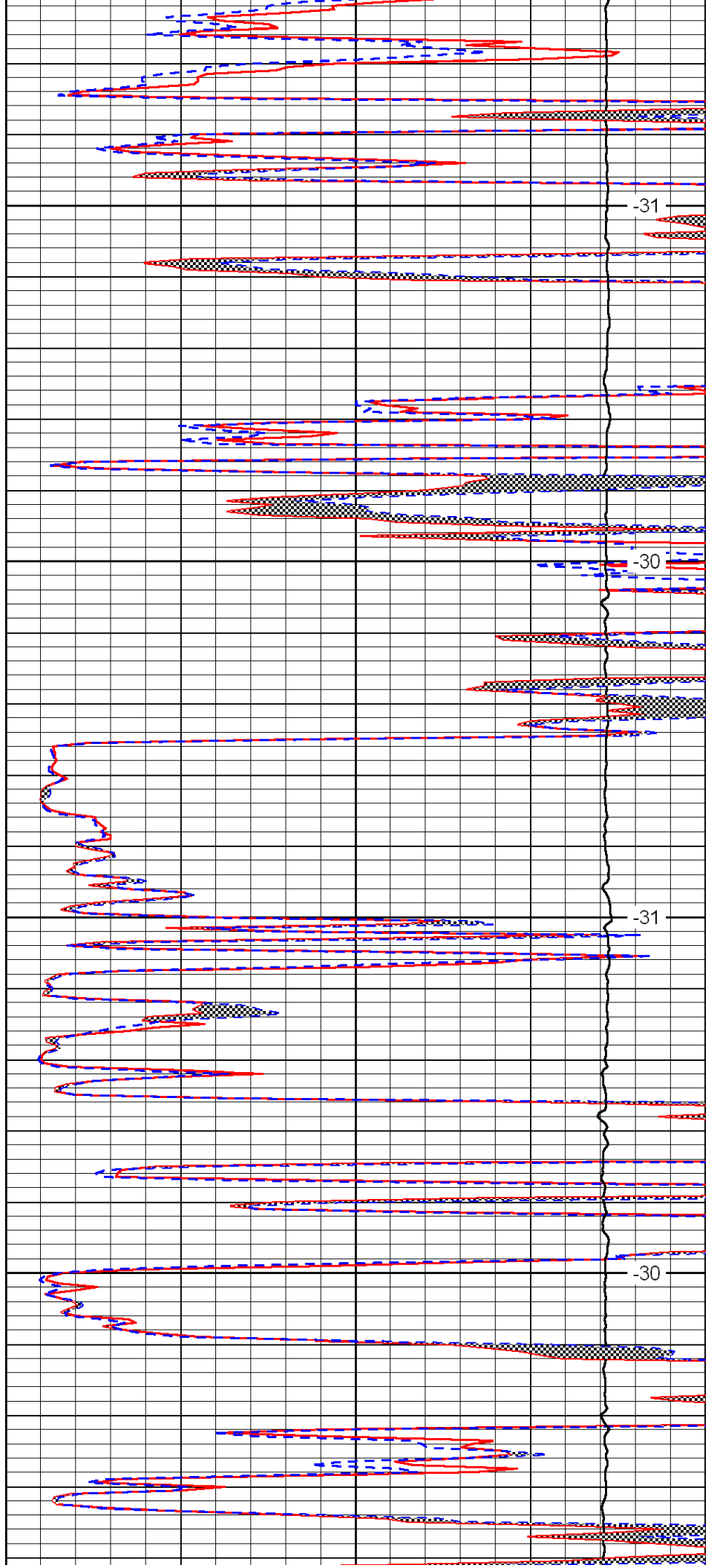


4500

4550

4600

4650



-31

-30

-31

-30

