



DIGITAL LOG (785) 625-3858

Dual Induction Log

API No.	15-097-21,673-00-00	
Company	L.D. Drilling, Inc.	
Well	Anthony No.1-27	
Field		
County	Kiowa	State
		Kansas
Location	E/2 E/2 NW SW 1980' FSL & 1300' FWL	
Sec: 27	Twp: 27S	Rge: 18W
Permanent Datum	Ground Level	Elevation 2182
Log Measured From	Kelly Bushing	12 Ft. Above Perm. Datum
Drilling Measured From	Kelly Bushing	
		Other Services CNL/CDL MEL/BHCS
		Elevation K.B. 2194 D.F. 2182 G.L. 2182

Date	5/12/2010
Run Number	One
Depth Driller	4880
Depth Logger	4879
Bottom Logged Interval	4878
Top Log Interval	450
Casing Driller	8.625 @ 483
Casing Logger	473
Bit Size	7.875
Type Fluid in Hole	Chemical
Salinity, ppm CL	7.900
Density / Viscosity	9.1 51
pH / Fluid Loss	8.5 10.4
Source of Sample	Flowline
Rm @ Meas. Temp	.7 @ 58
Rmf @ Meas. Temp	.53 @ 58
Rmc @ Meas. Temp	.95 @ 58
Source of Rmf / Rmc	Charts
Rm @ BHT	.33 @ 125
Operating Rig Time	5 Hours
Max Rec. Temp. F	125
Equipment Number	15
Location	Hays
Recorded By	C. Desaire
Witnessed By	Jim Musgrove

<<< Fold Here >>>

All interpretations are opinions based on inferences from electrical or other measurements and we cannot and do not guarantee the accuracy or correctness of any interpretation, and we shall not, except in the case of gross or willful negligence on our part, be liable or responsible for any loss, costs, damages, or expenses incurred or sustained by anyone resulting from any interpretation made by any of our officers, agents or employees. These interpretations are also subject to our general terms and conditions set out in our current Price Schedule.

Comments

Thank you for using Log-Tech, Inc.
(785) 625-3858

Greensburg, 3 1/2 N of Stoplight, E Into

Database File: c:\warrior\data\ld drilling_anthony no.1-27\ldhd.db
 Dataset Pathname: dil\dstk2
 Presentation Format: dil2in
 Dataset Creation: Thu May 13 12:04:53 2010
 Charted by: Depth in Feet scaled 1:600

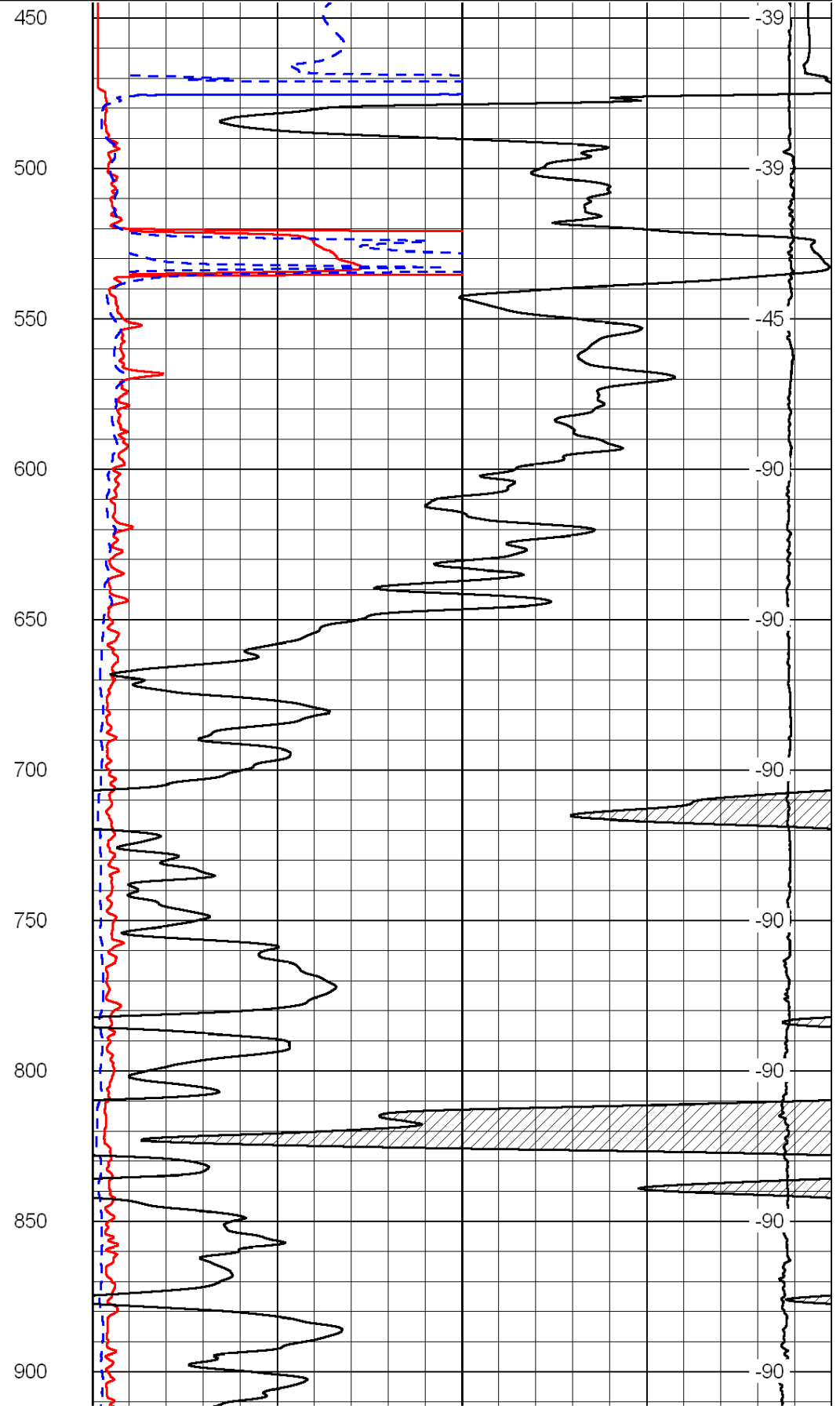
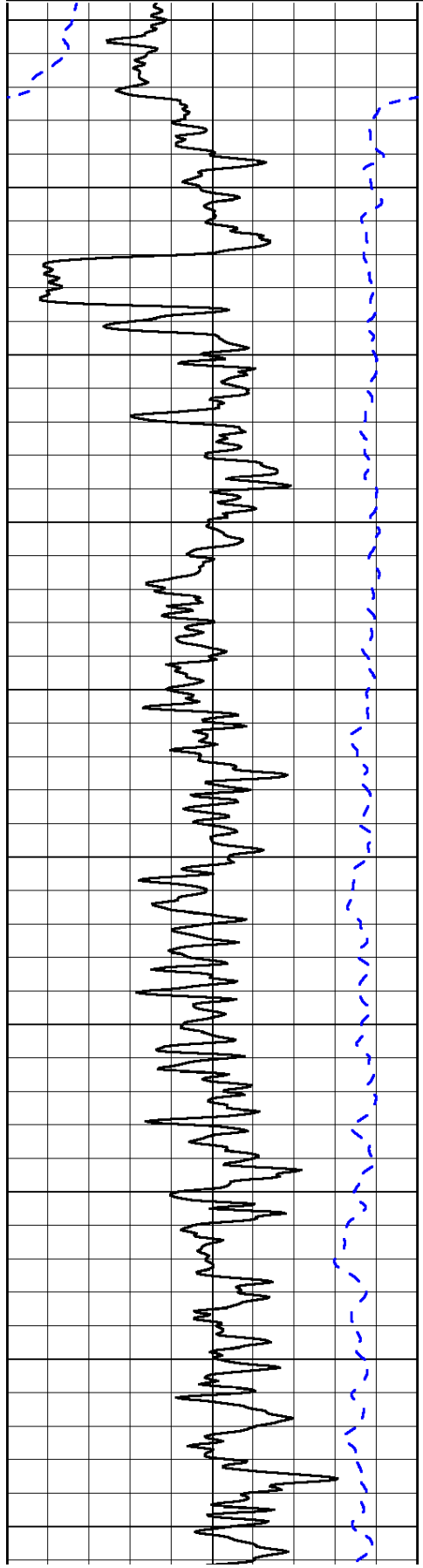
0	Gamma Ray	150
-200	SP (mV)	0

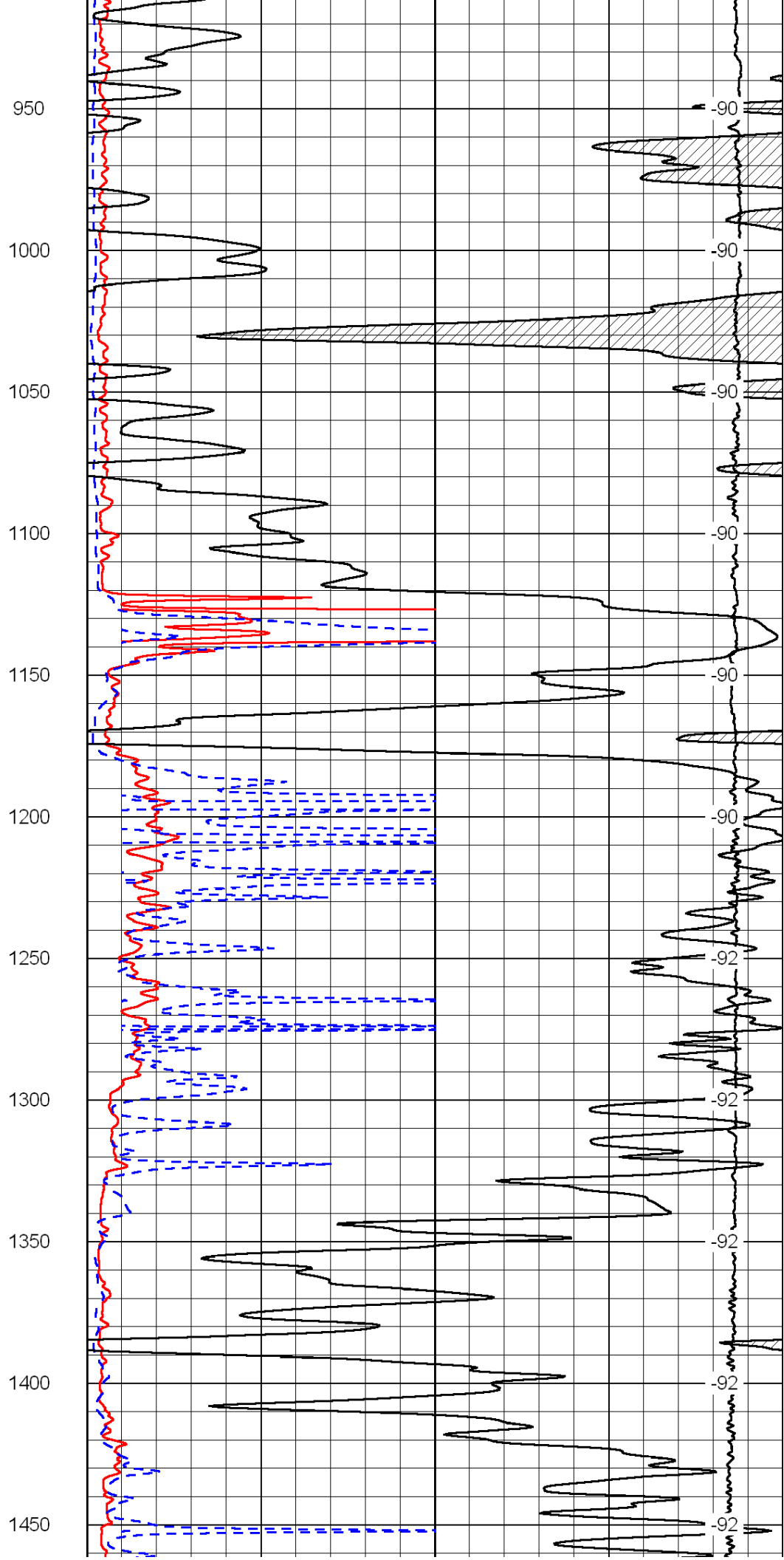
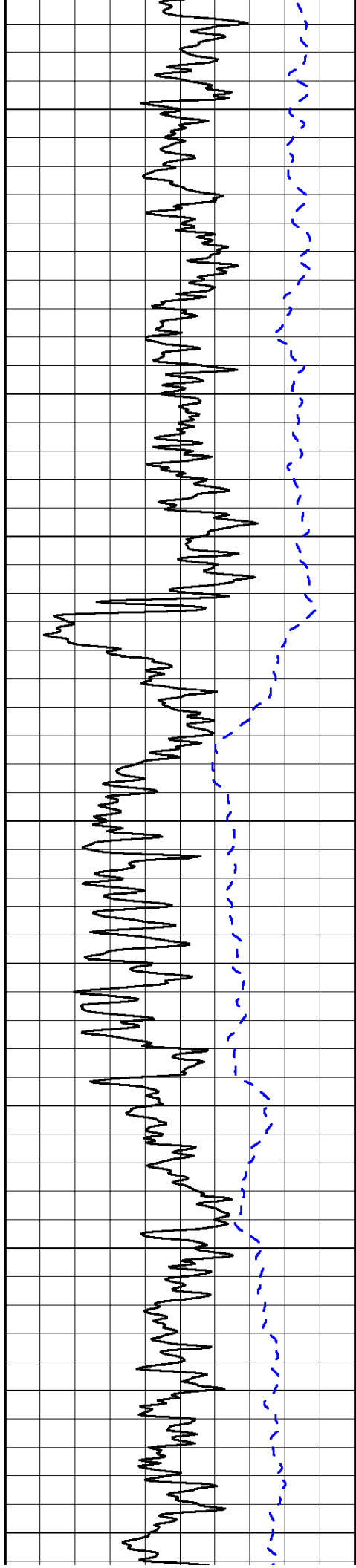
0	Shallow Resistivity	50
0	Deep Resistivity	50

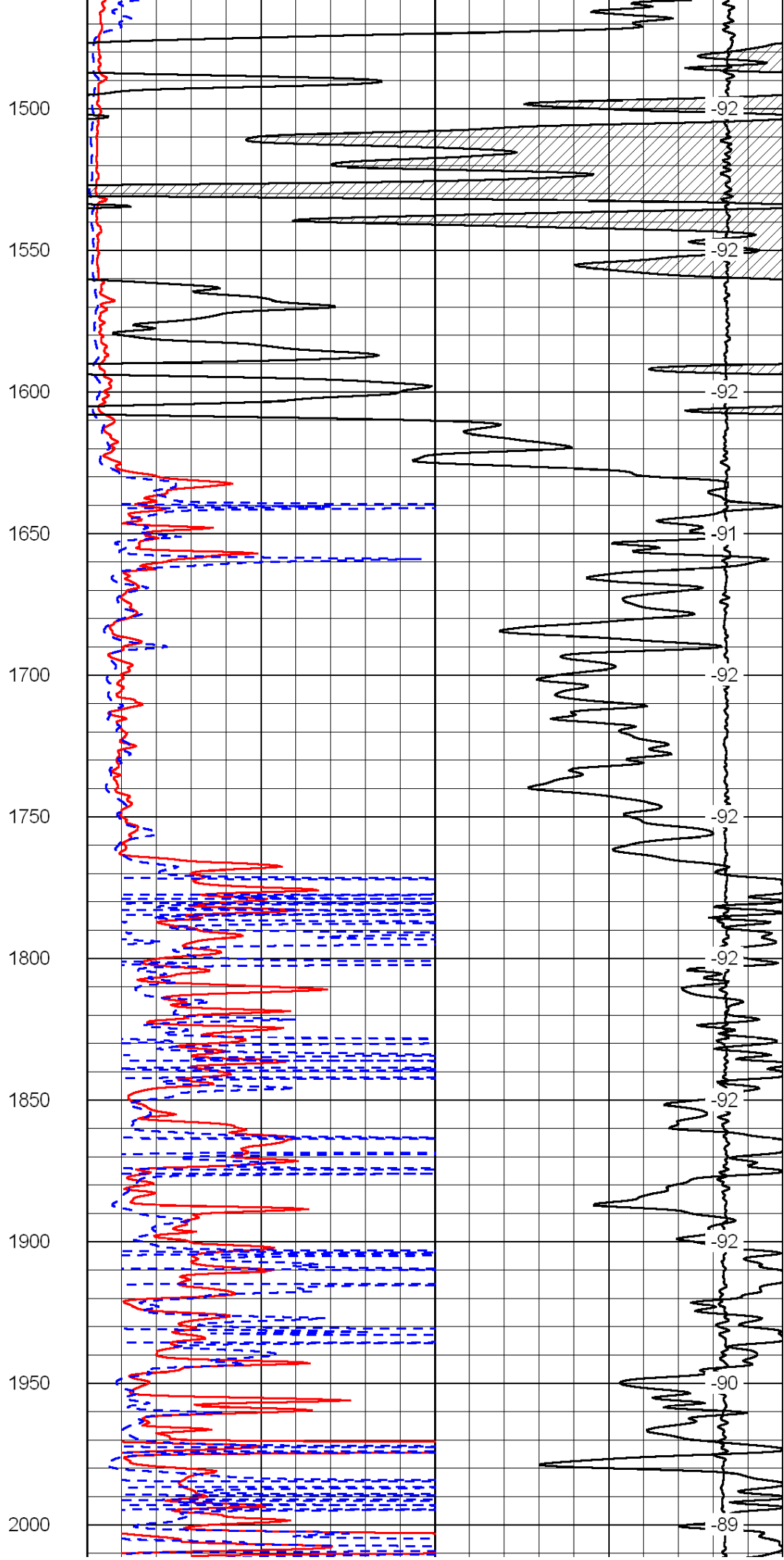
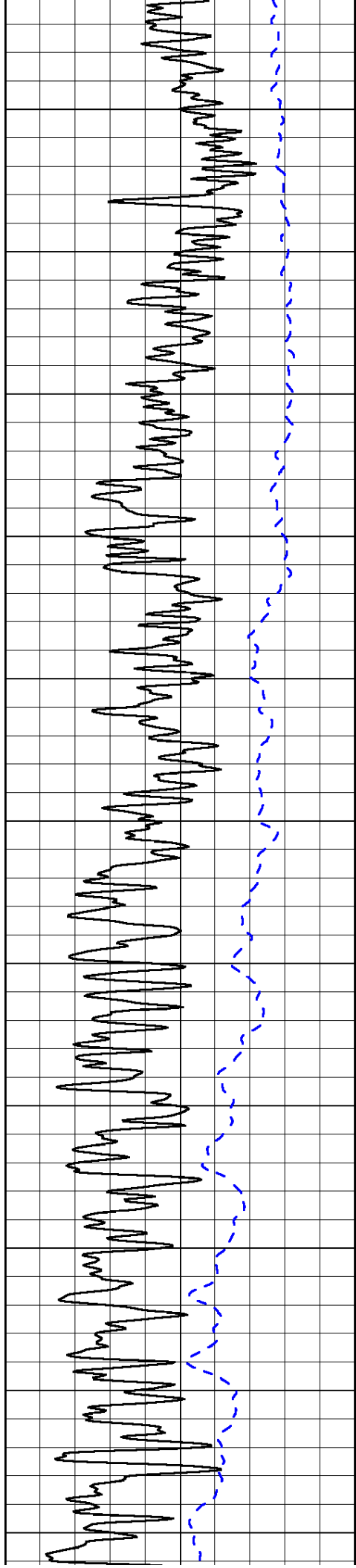
LSPD

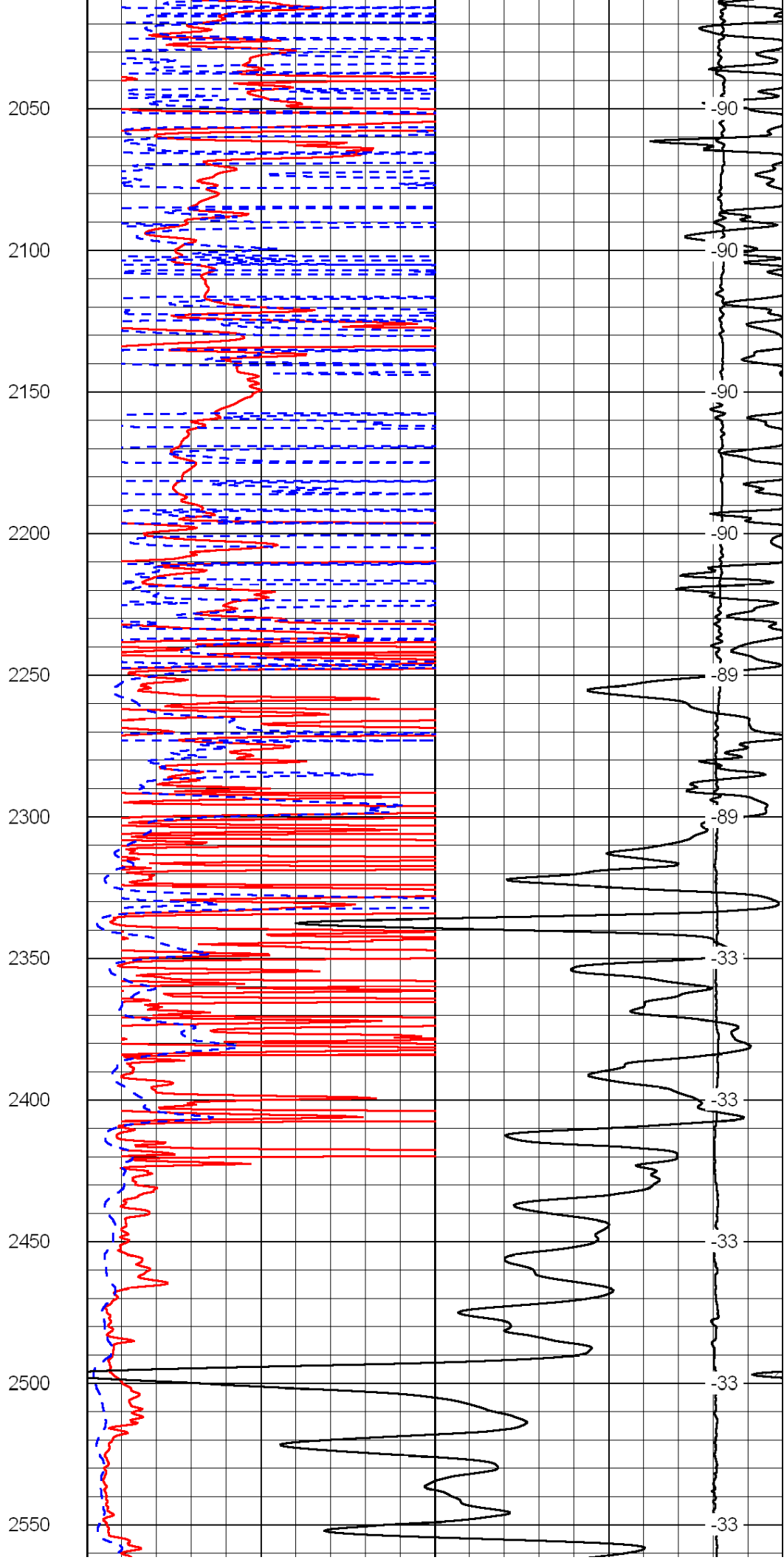
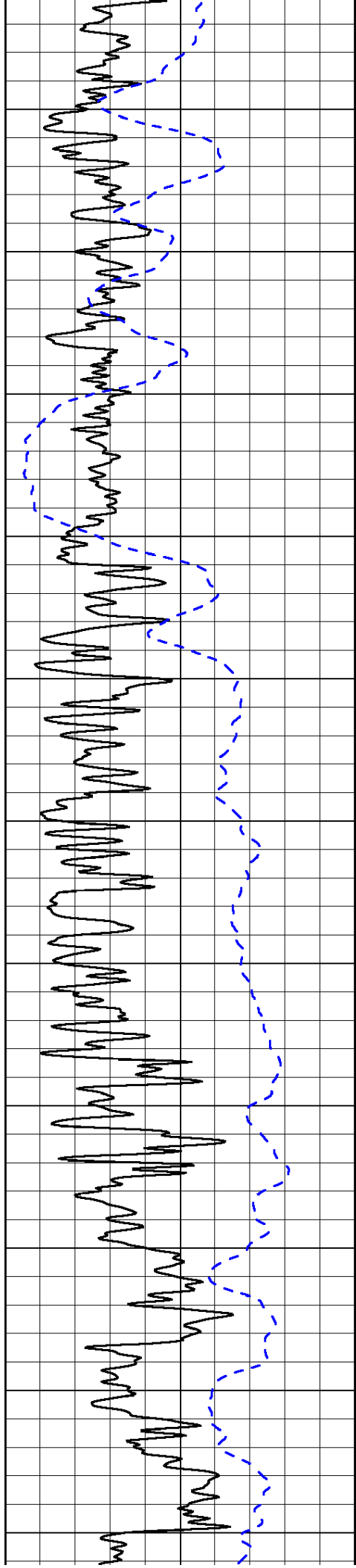
1000	Conductivity	0
15000	Line Tension	0

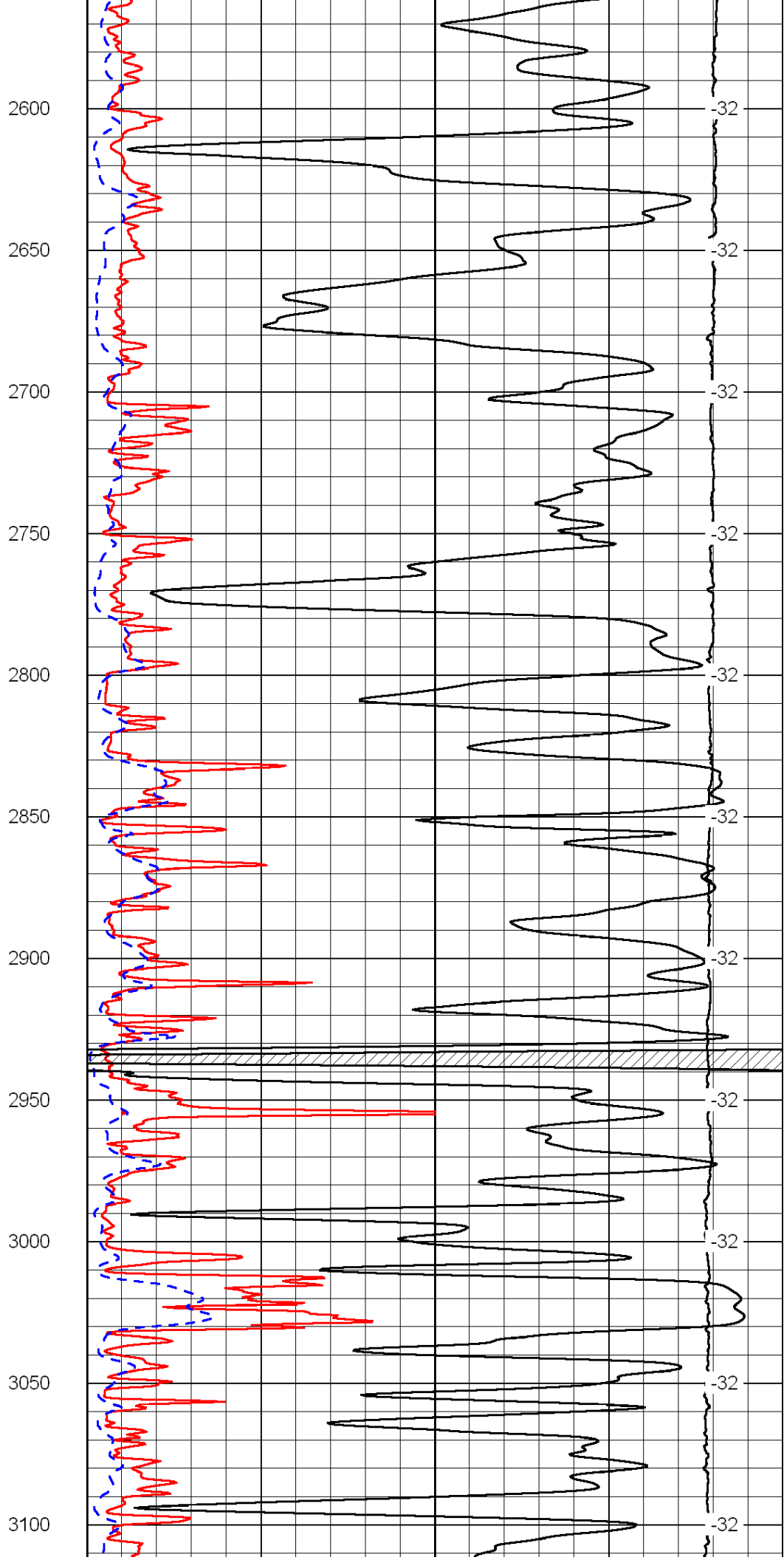
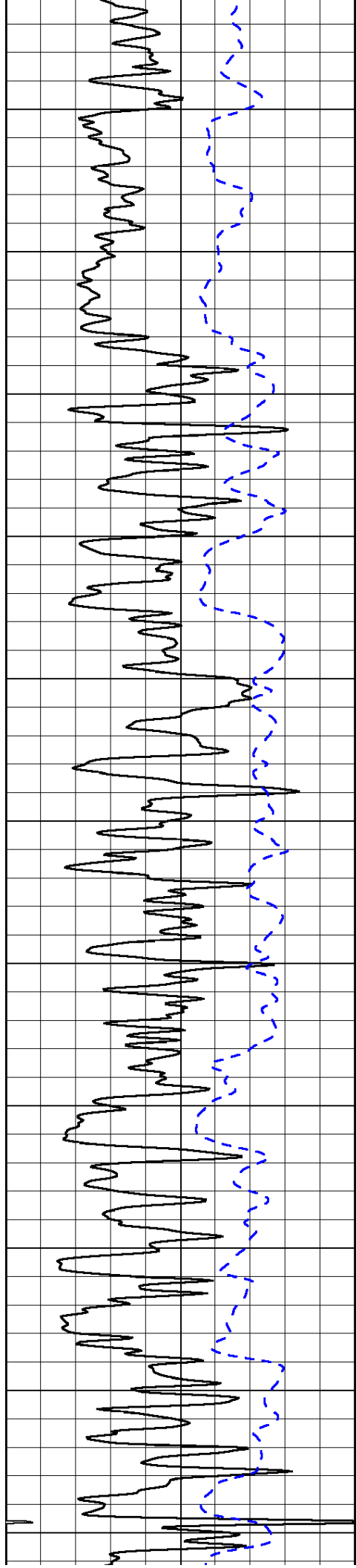
50	Shallow Resistivity	500
50	Deep Resistivity	500

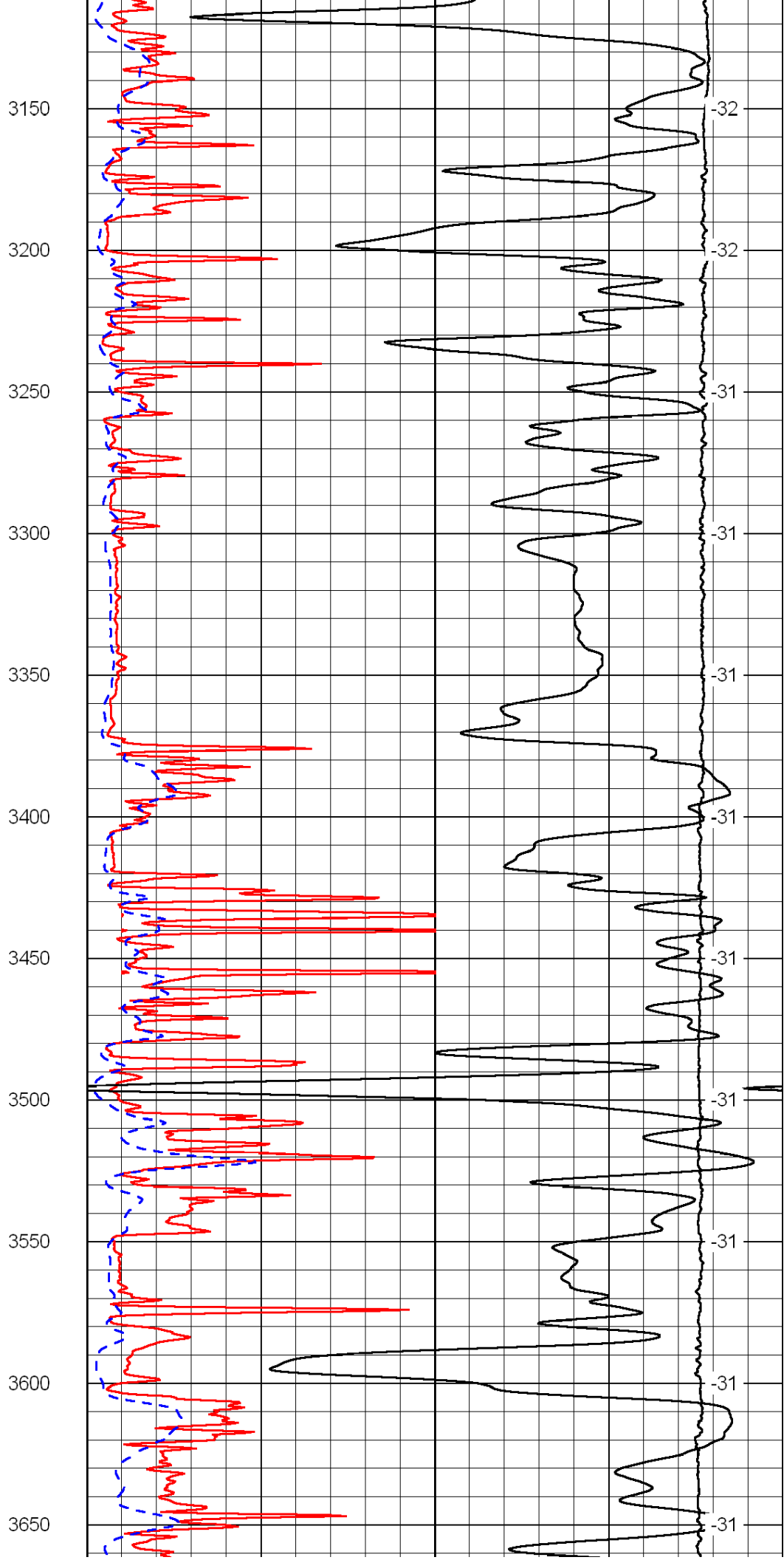
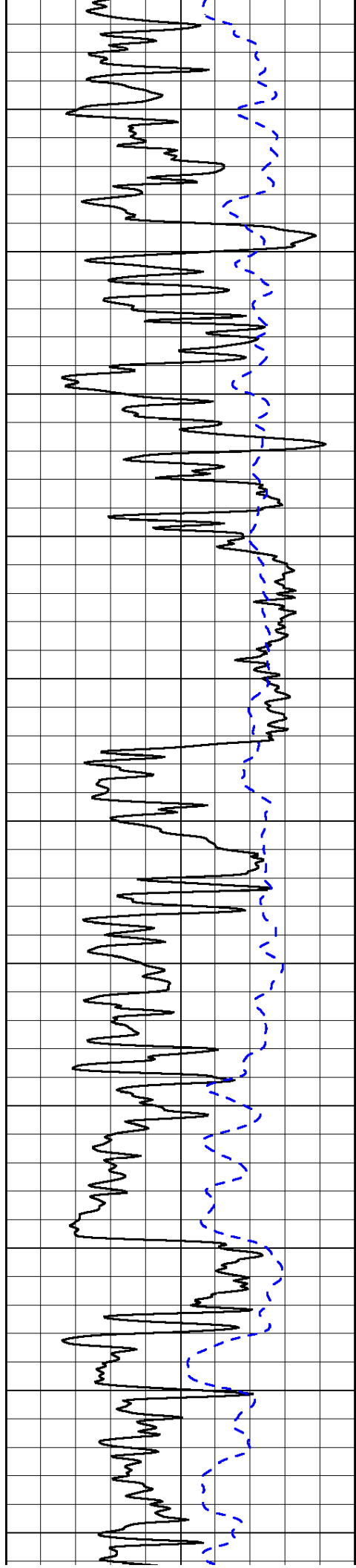


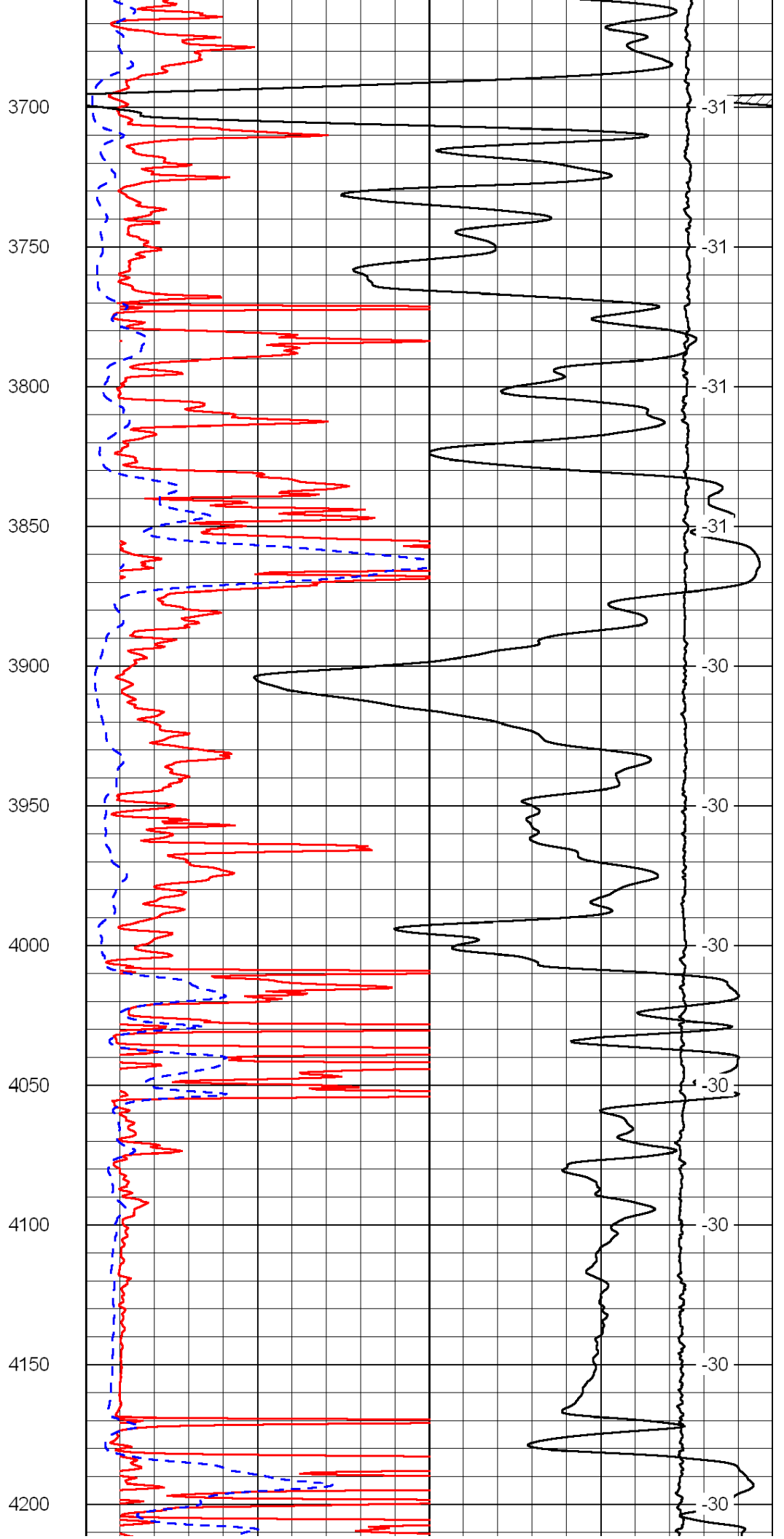
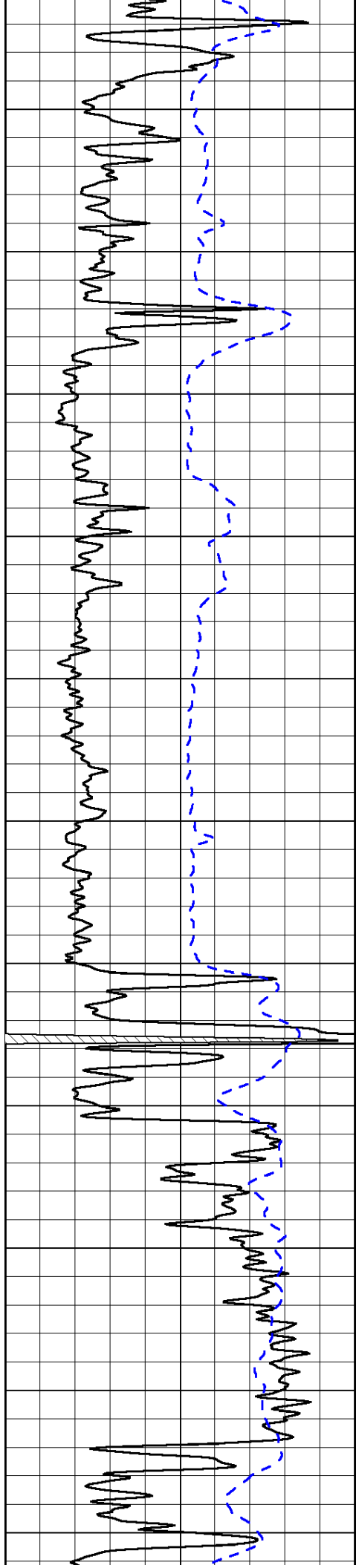


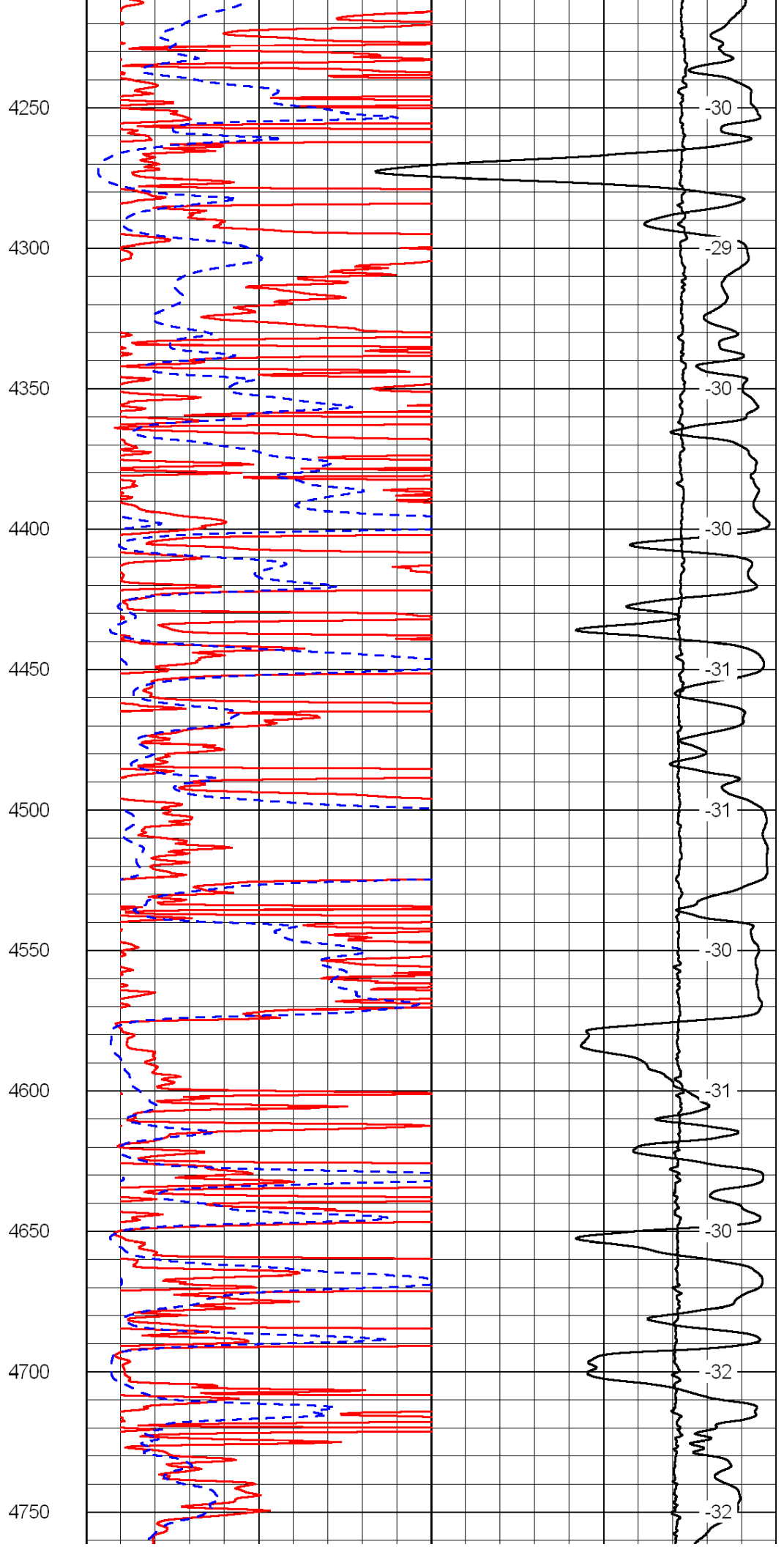
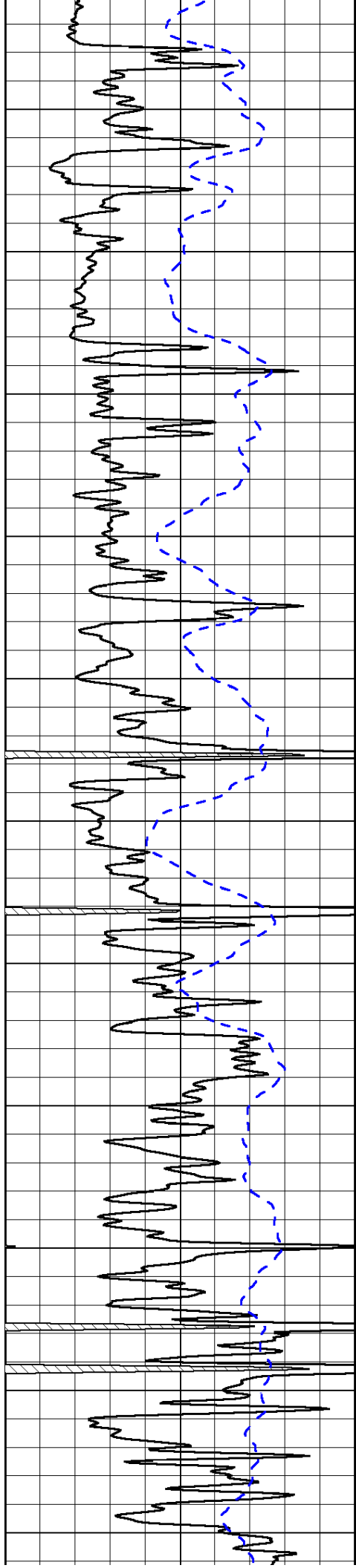


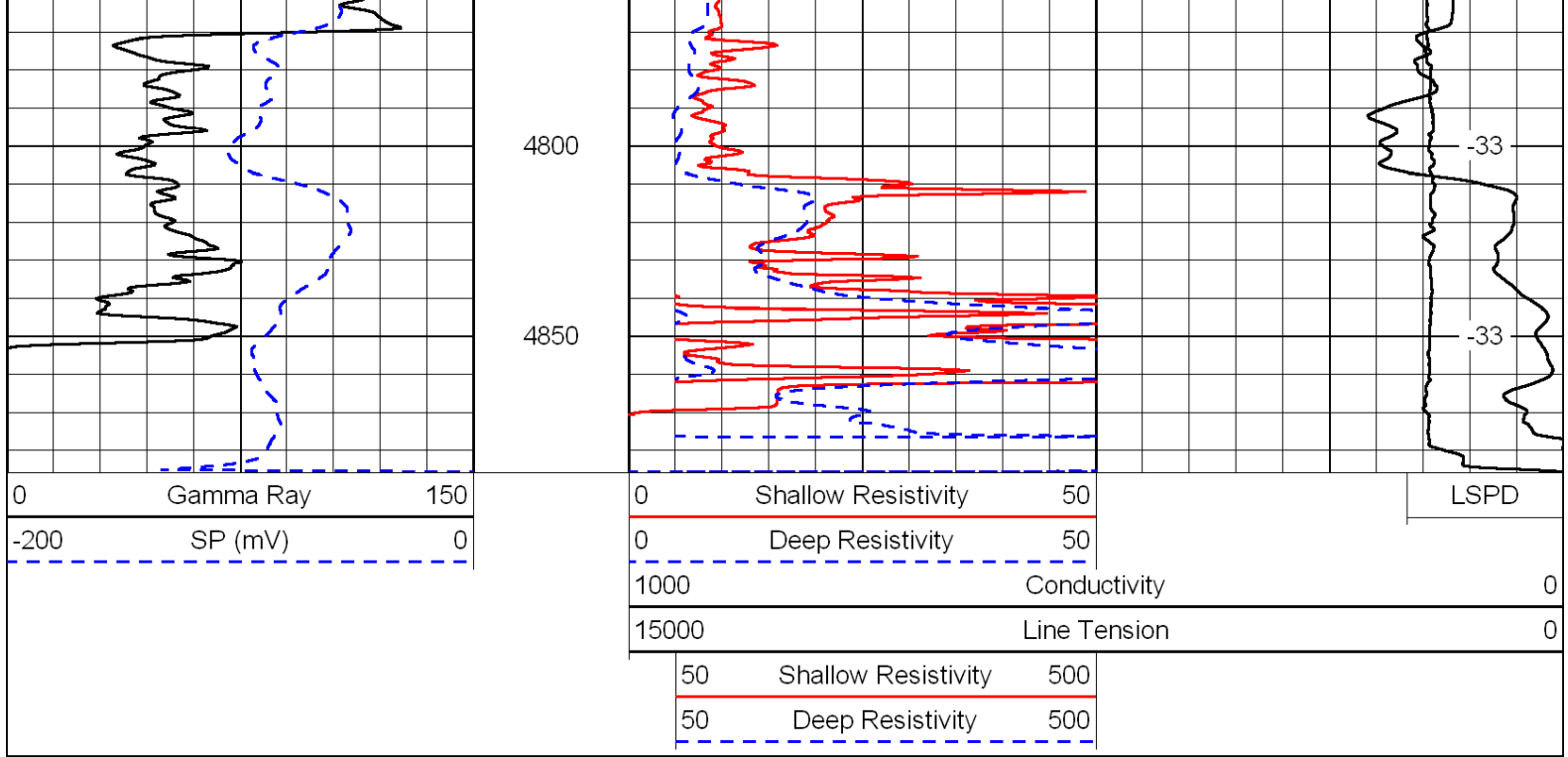




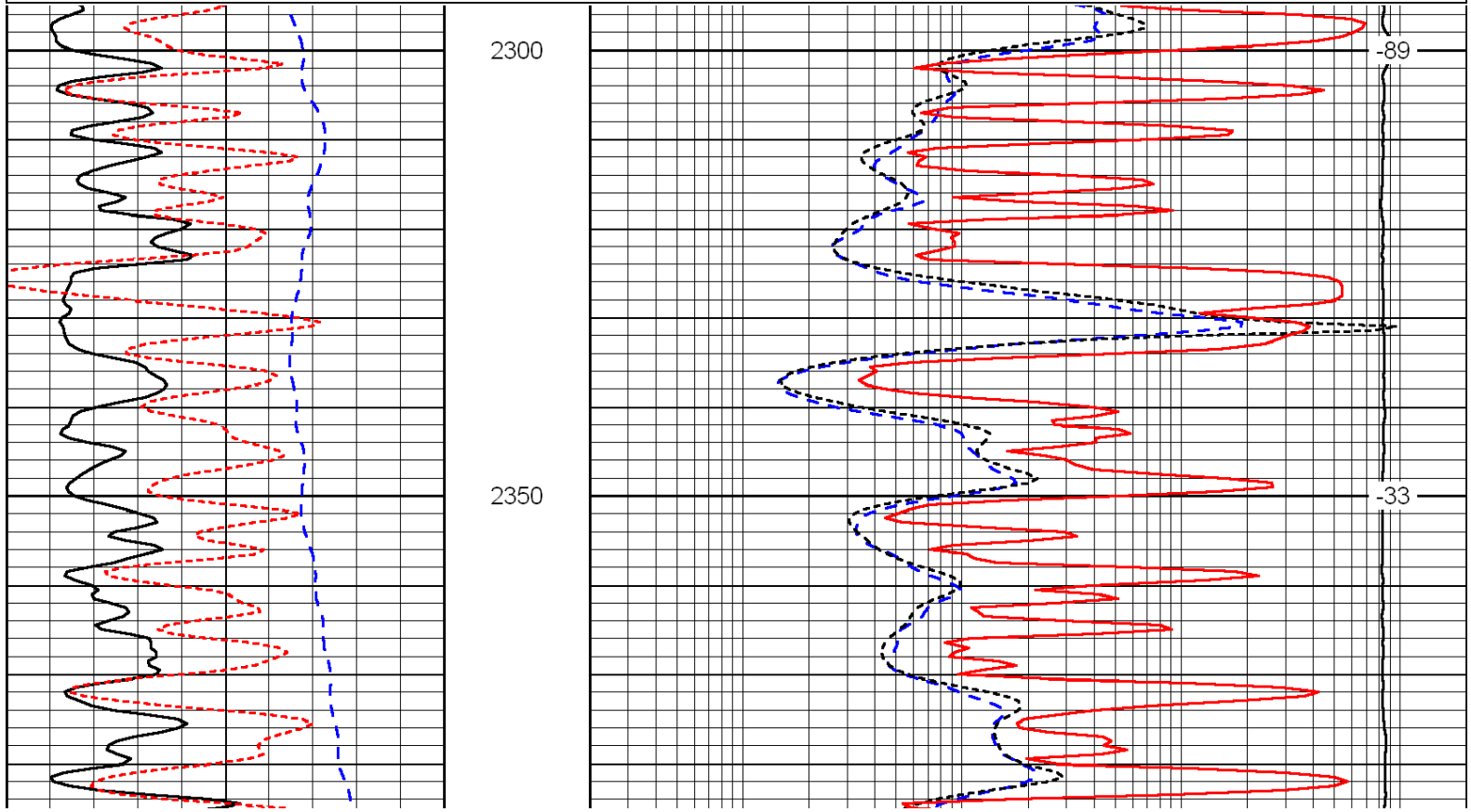
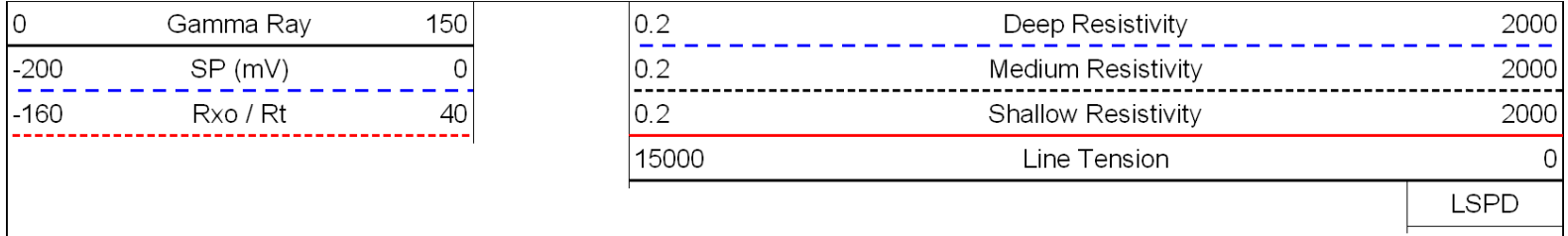


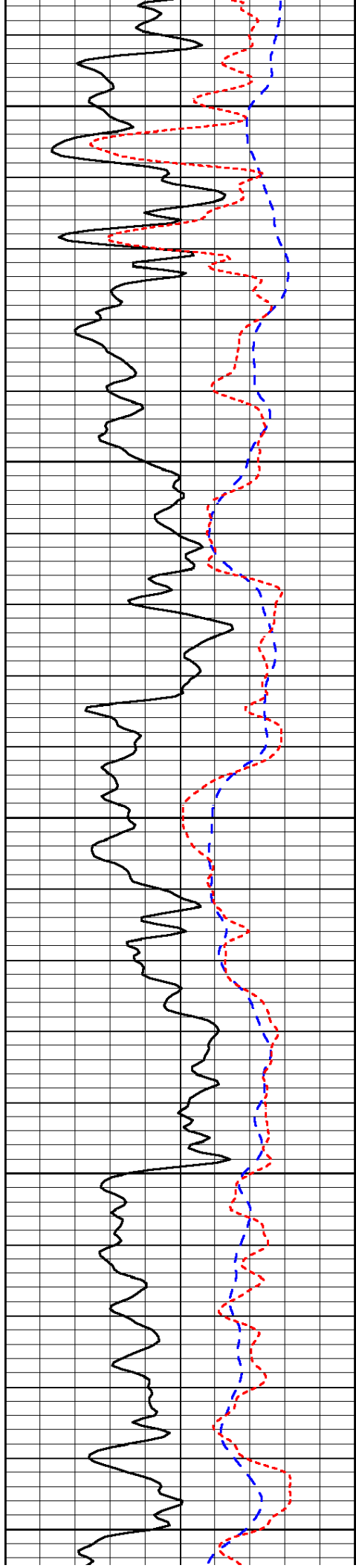






Database File: c:\warrior\data\ld drilling_anthony no.1-27\ldhd.db
 Dataset Pathname: dil\ldstk2
 Presentation Format: dil
 Dataset Creation: Thu May 13 12:04:53 2010
 Charted by: Depth in Feet scaled 1:240





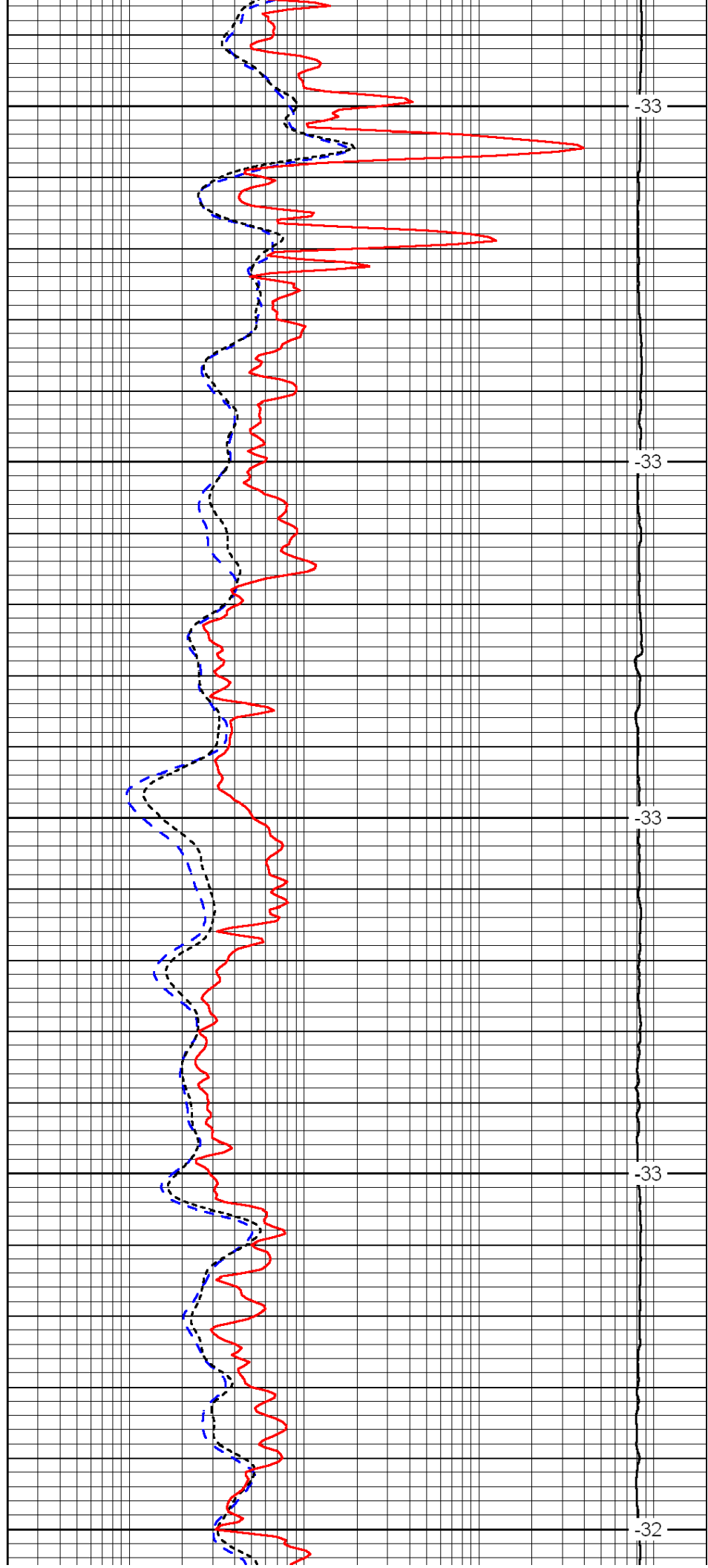
2400

2450

2500

2550

2600



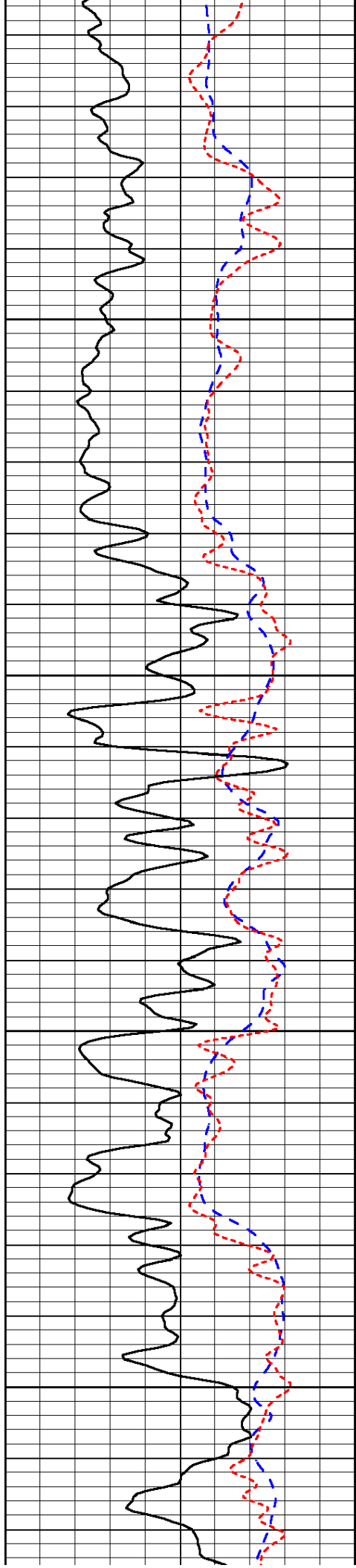
-33

-33

-33

-33

-32

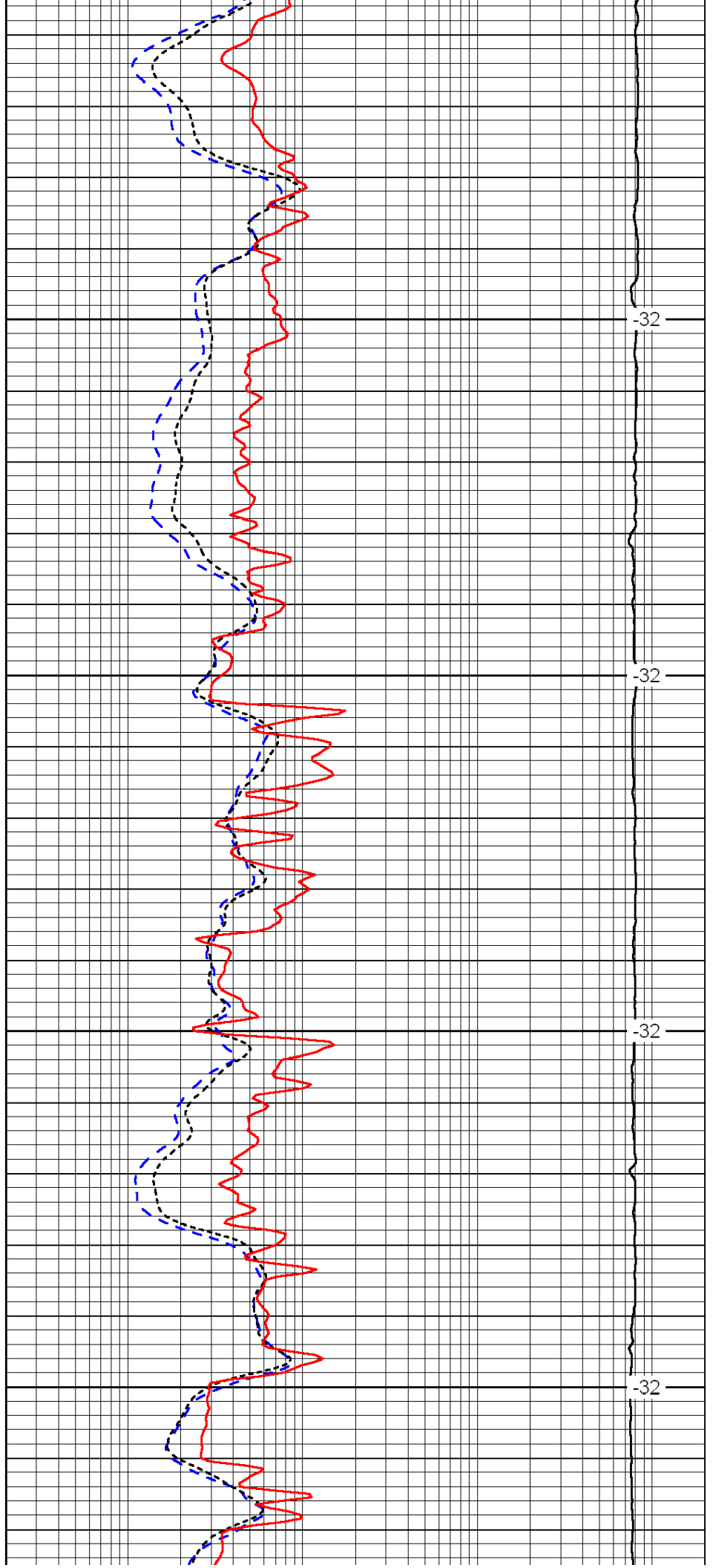


2650

2700

2750

2800

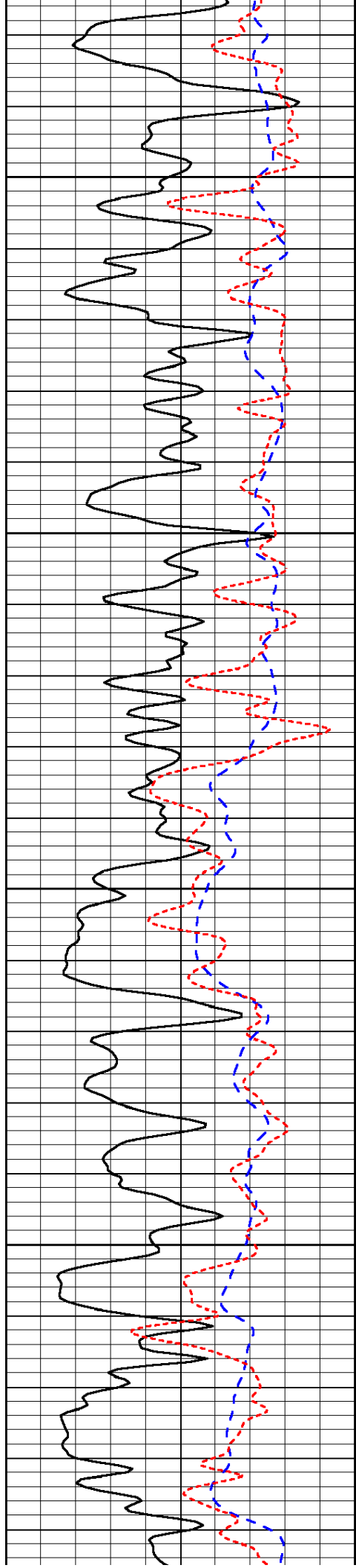


-32

-32

-32

-32

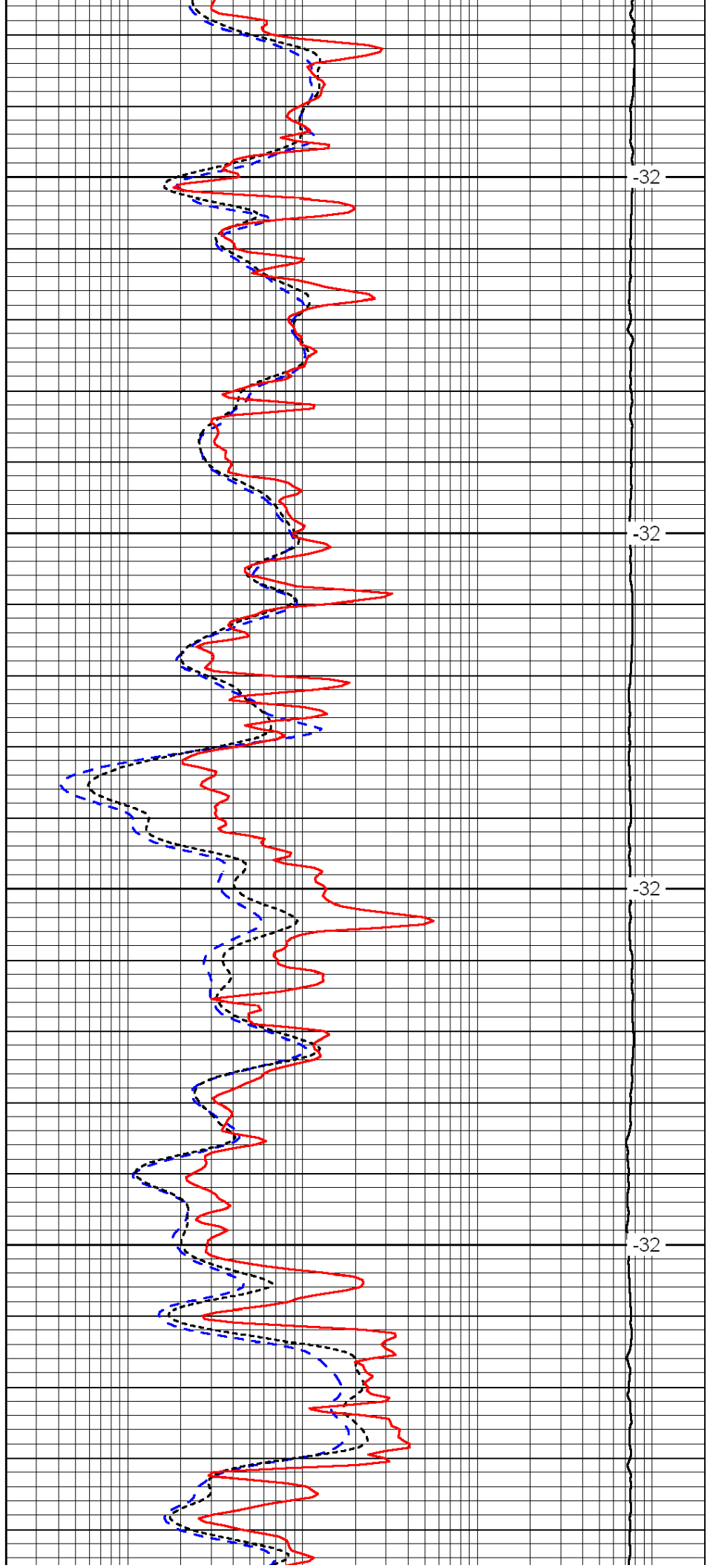


2850

2900

2950

3000

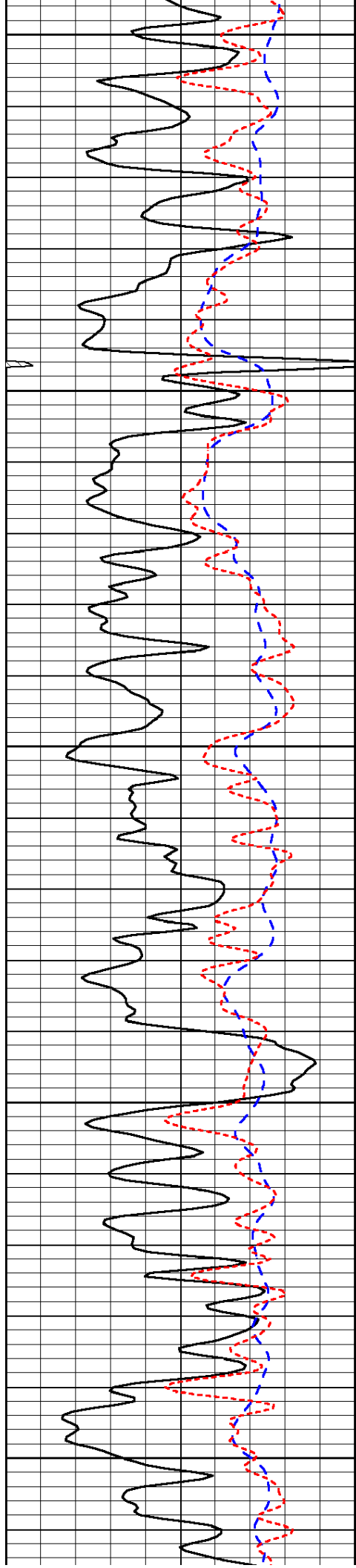


-32

-32

-32

-32



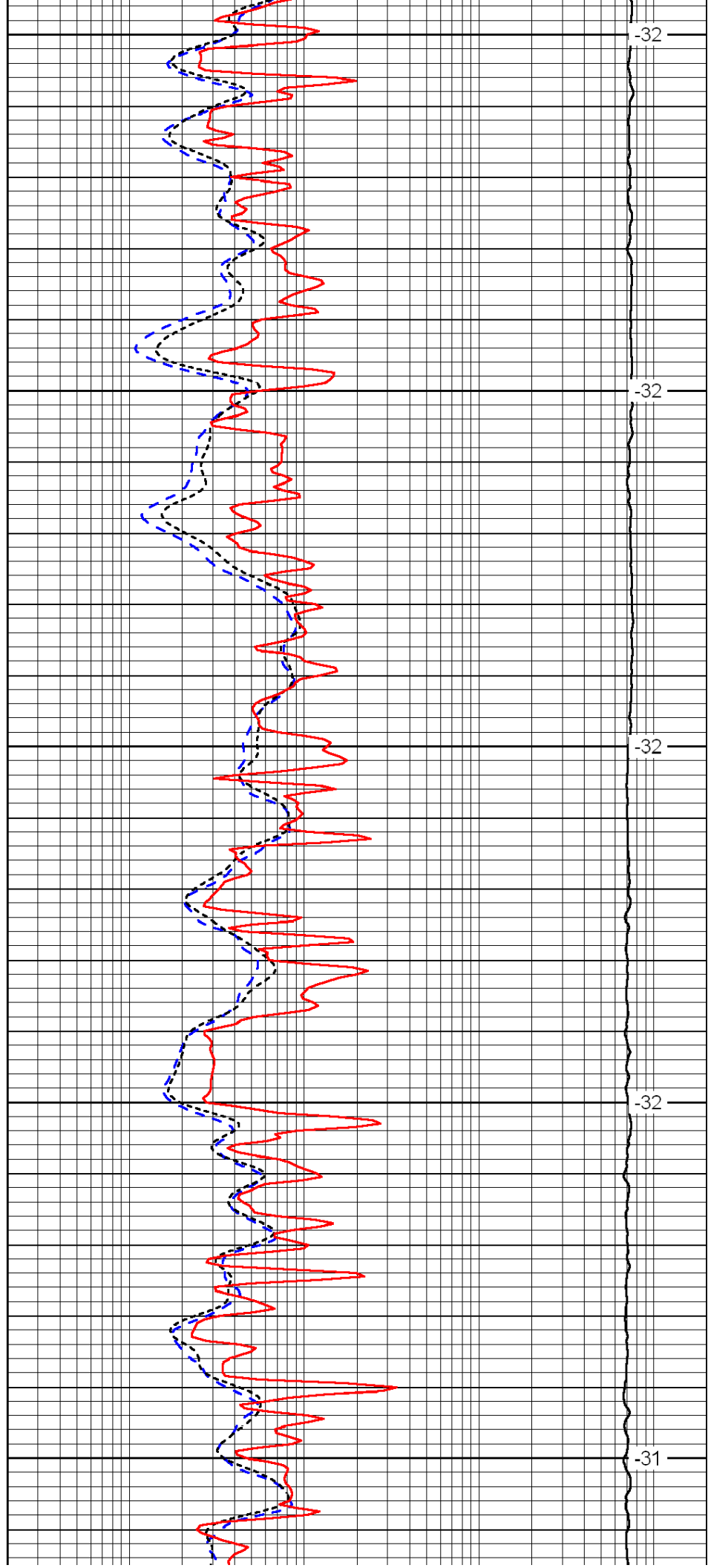
3050

3100

3150

3200

3250



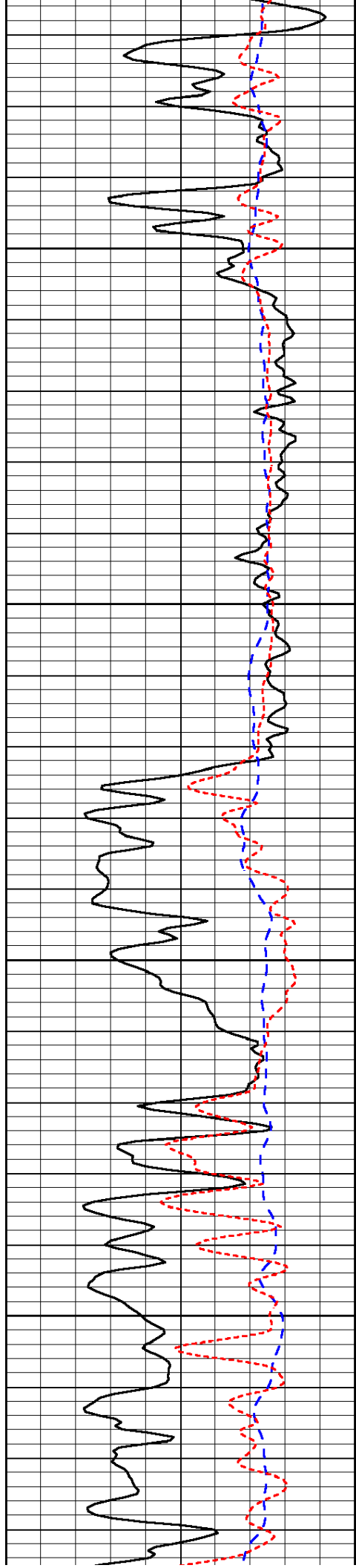
-32

-32

-32

-32

-31

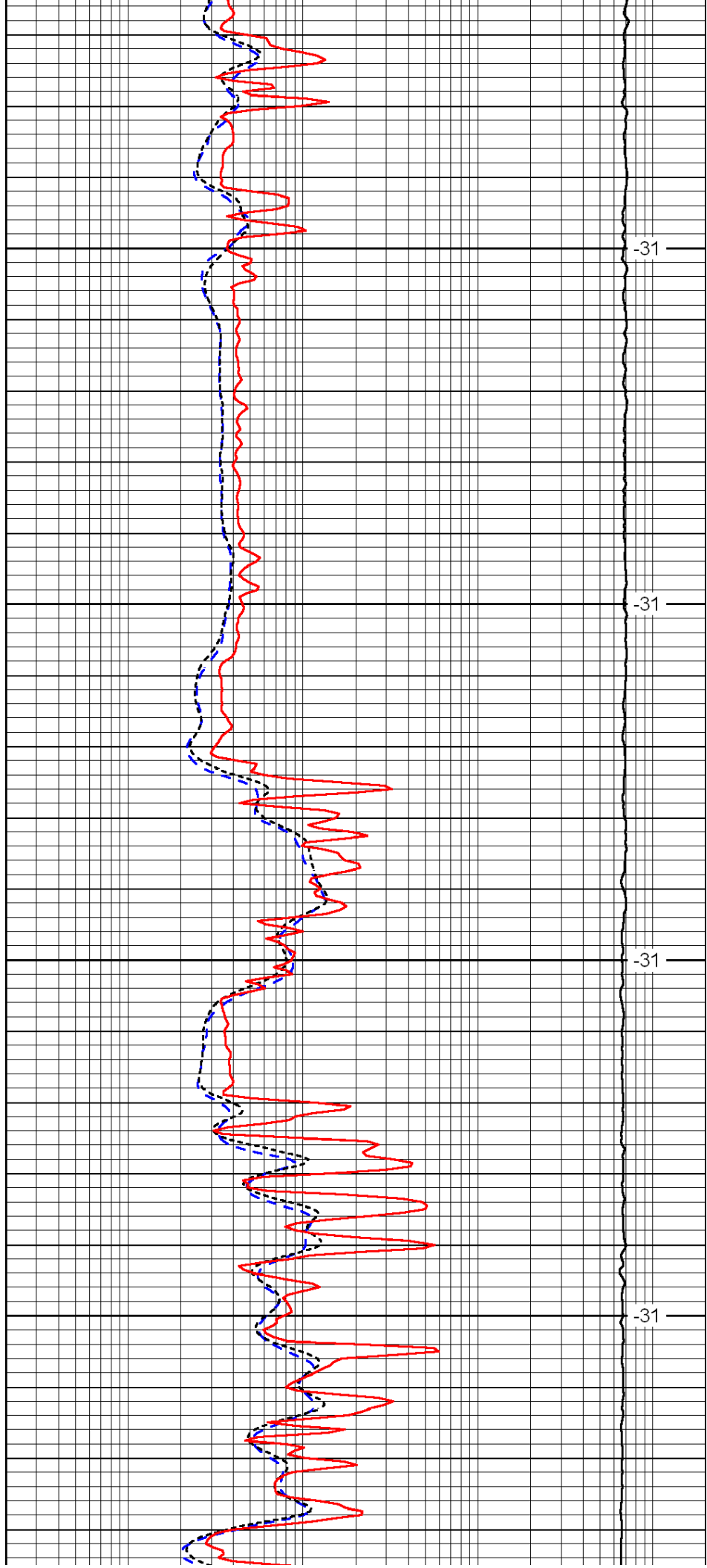


3300

3350

3400

3450

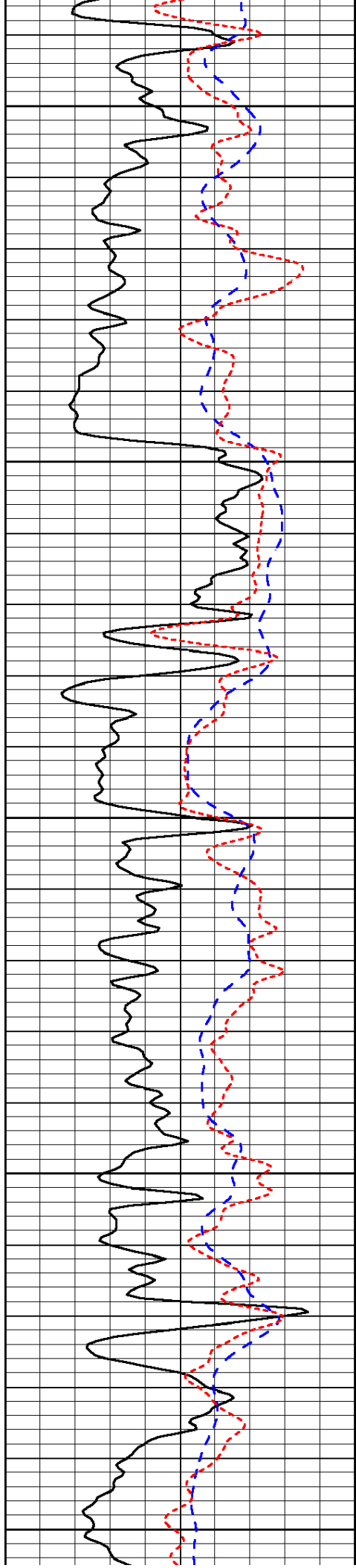


-31

-31

-31

-31



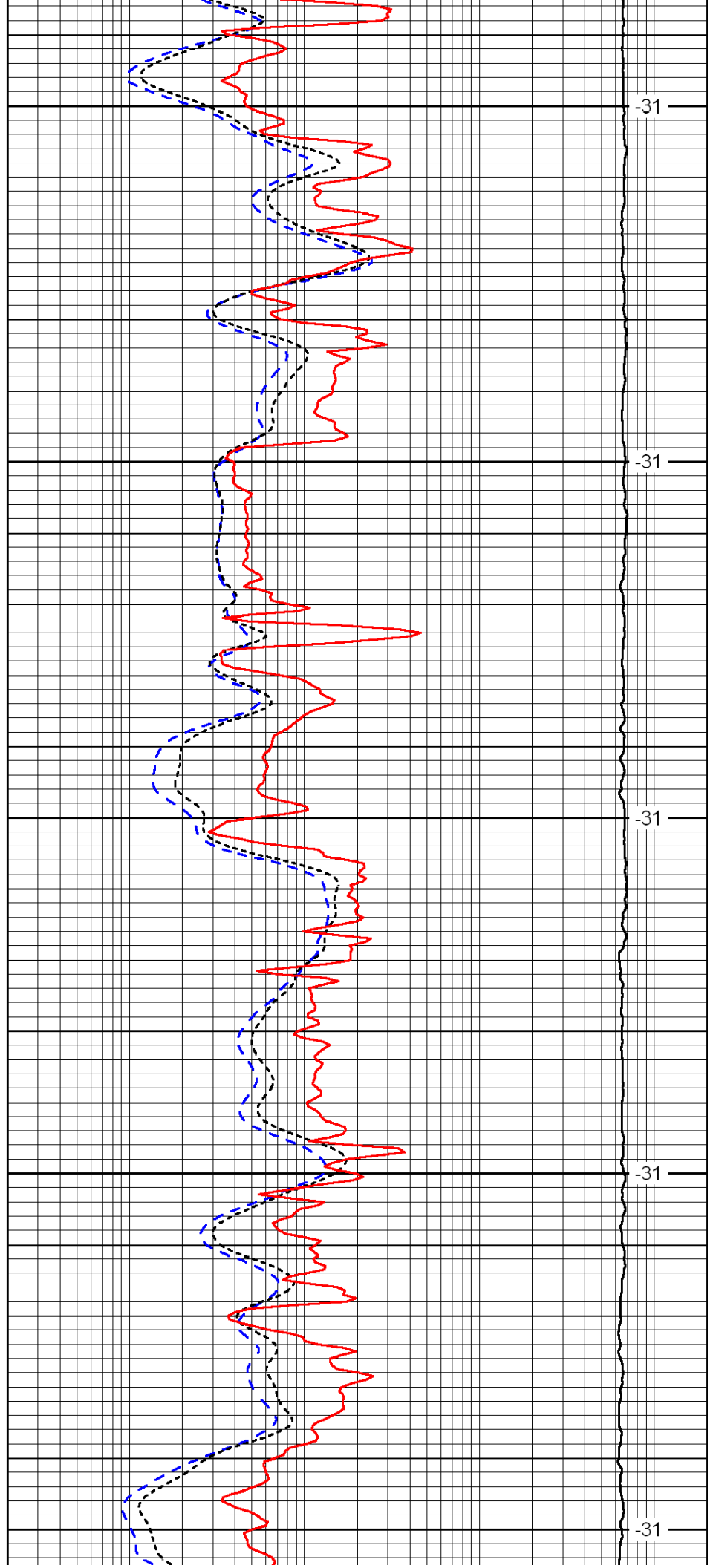
3500

3550

3600

3650

3700



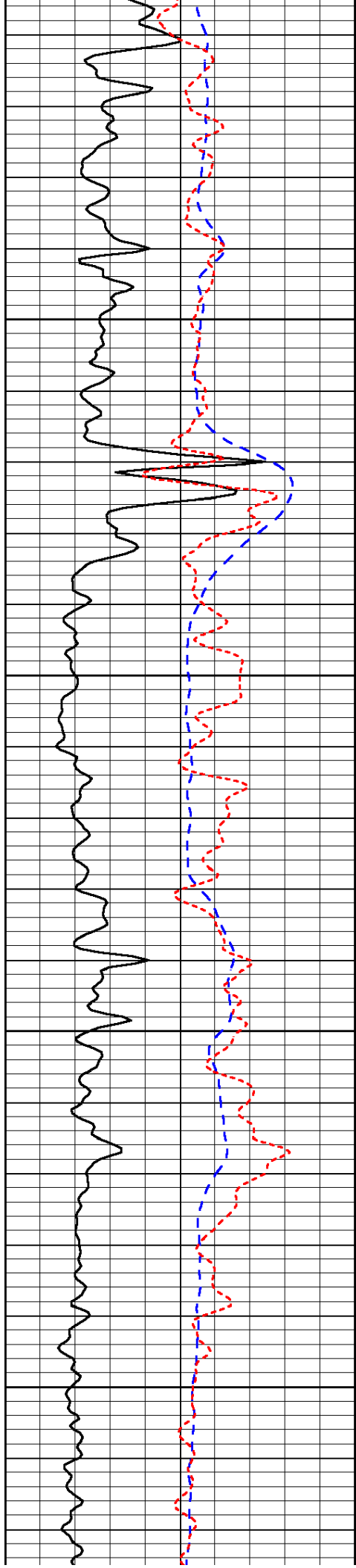
-31

-31

-31

-31

-31

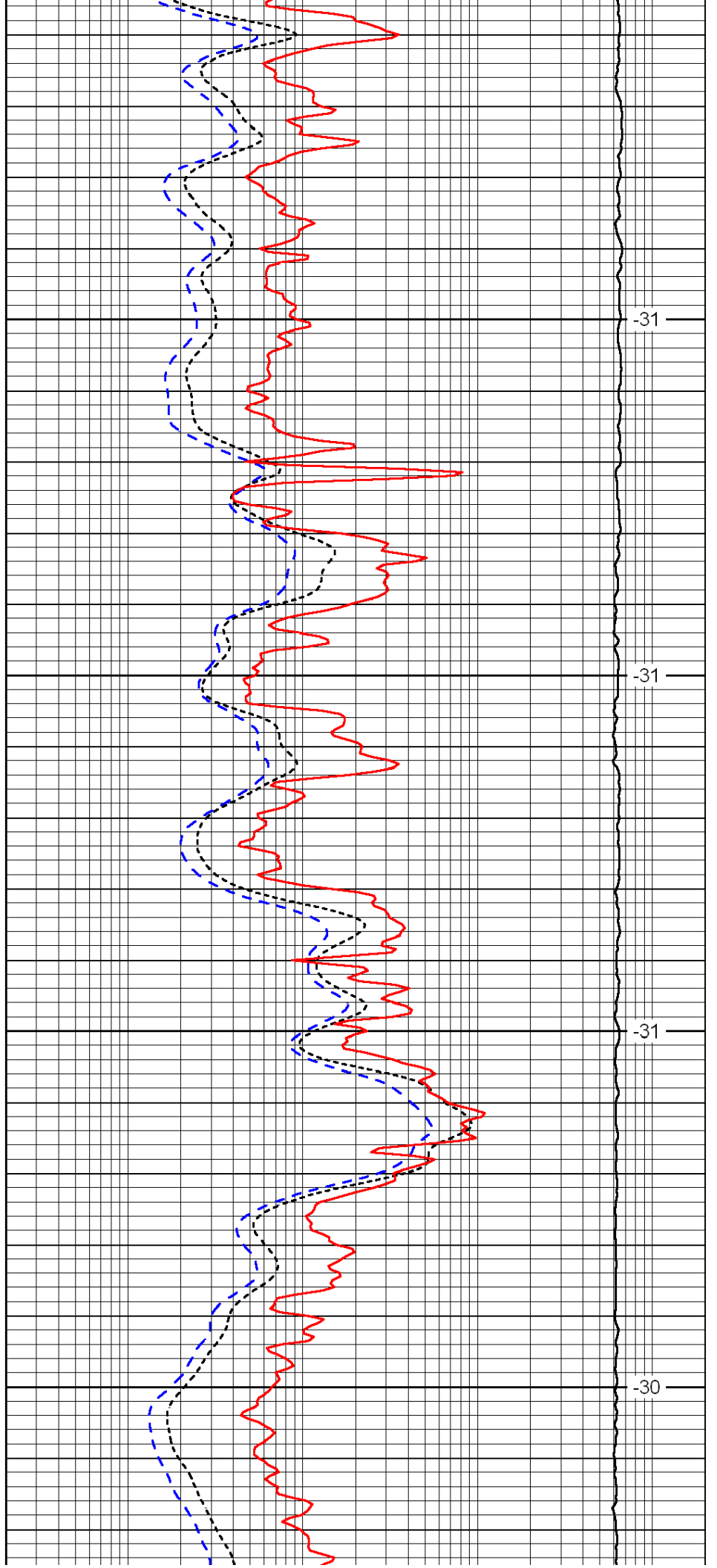


3750

3800

3850

3900

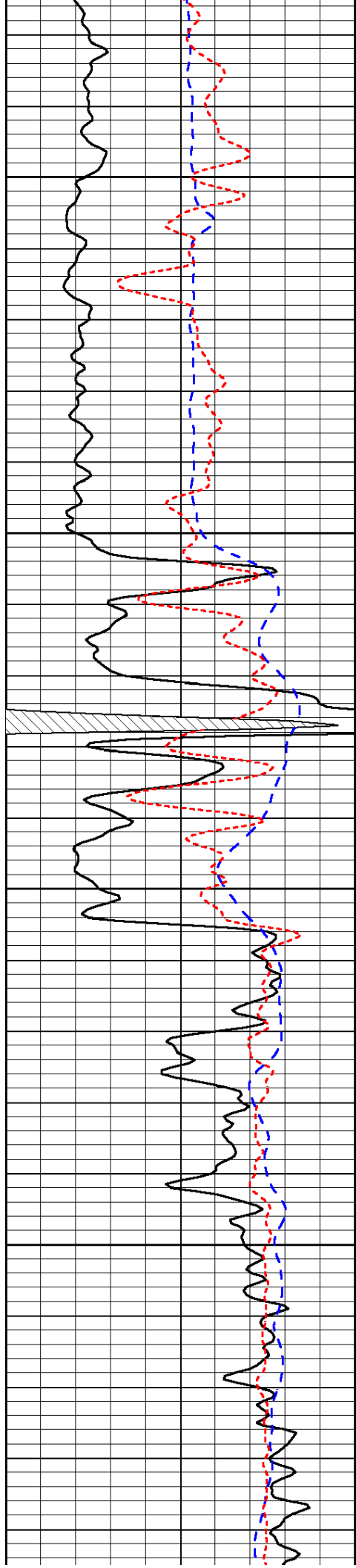


-31

-31

-31

-30

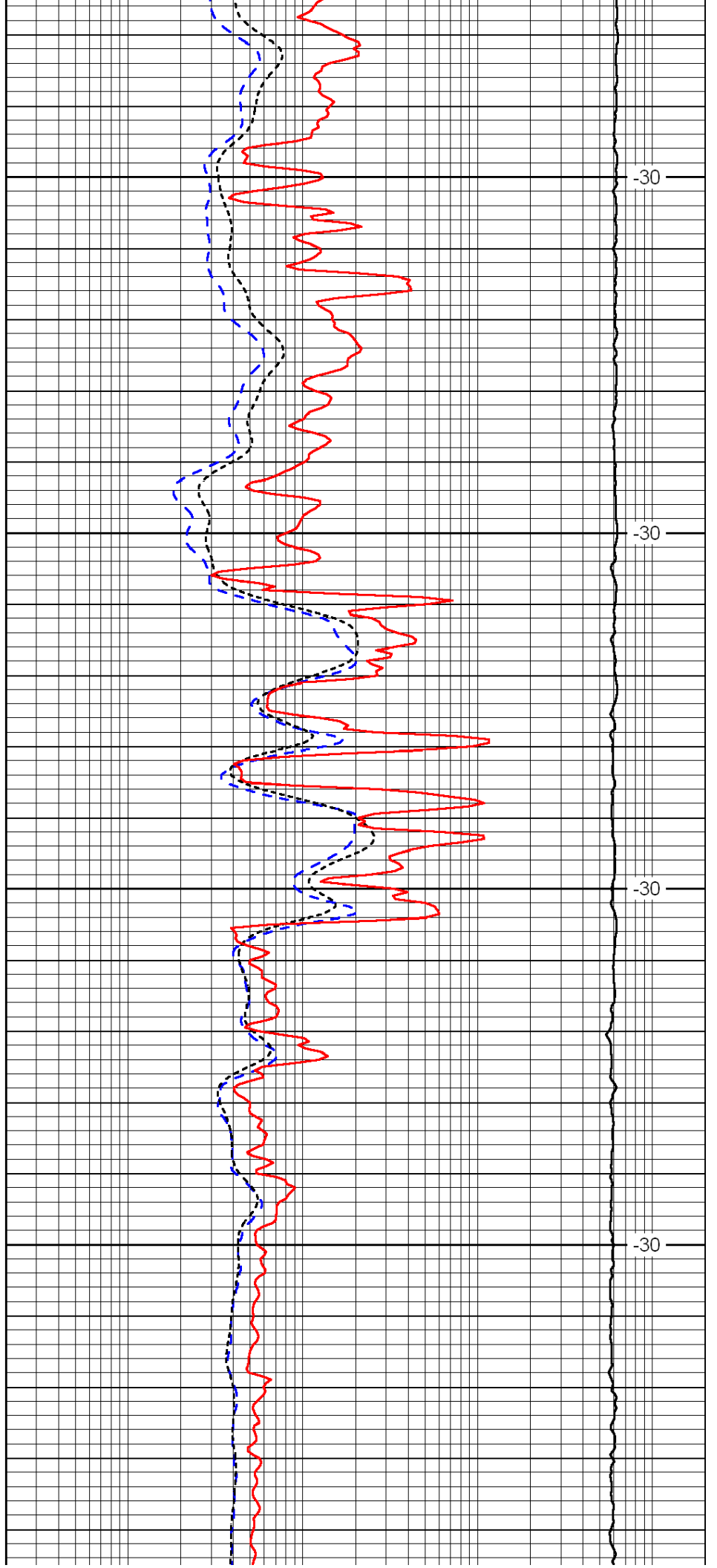


3950

4000

4050

4100

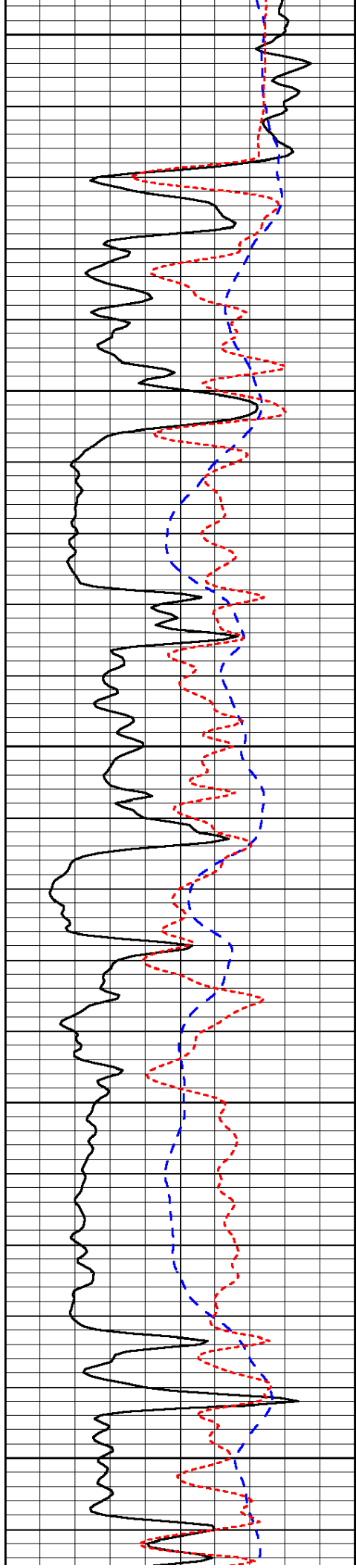


-30

-30

-30

-30



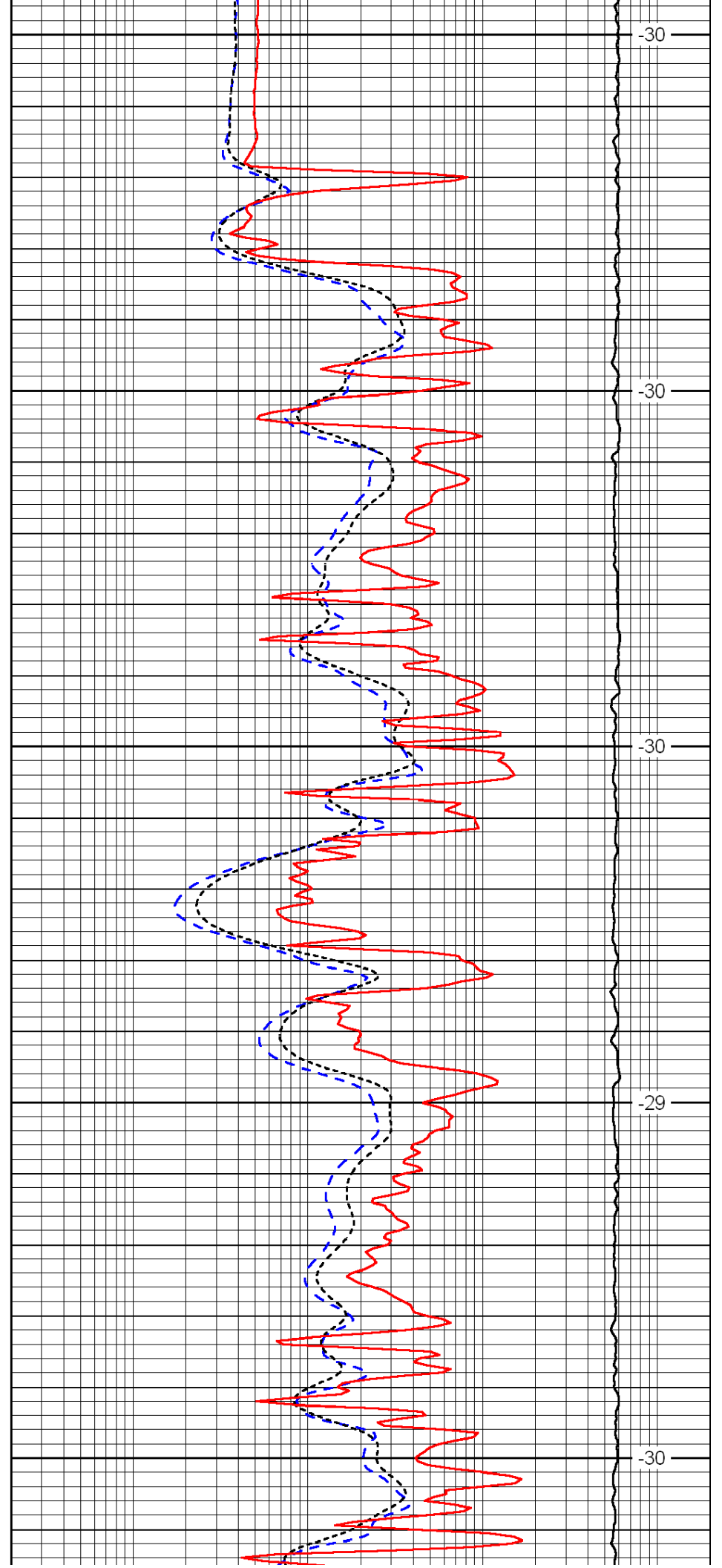
4150

4200

4250

4300

4350



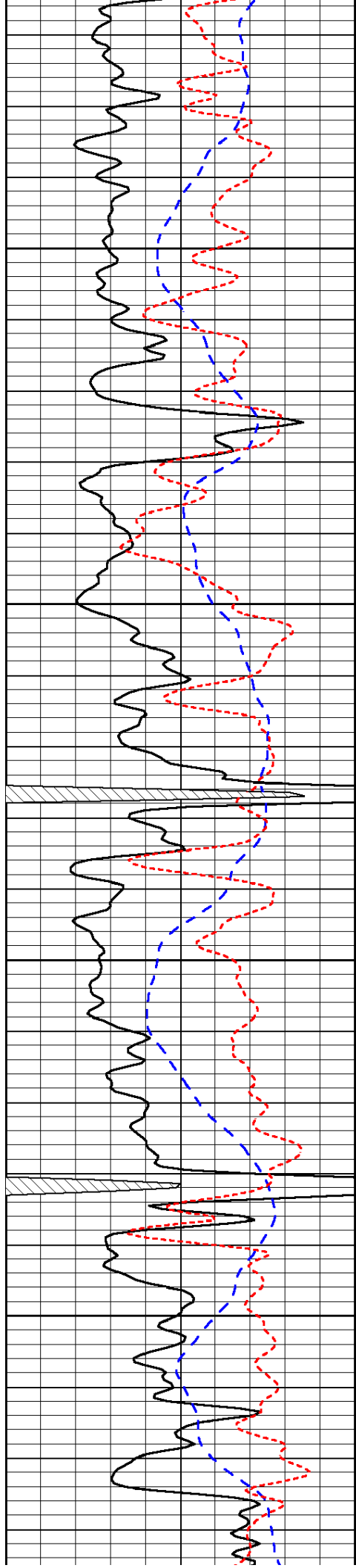
-30

-30

-30

-29

-30

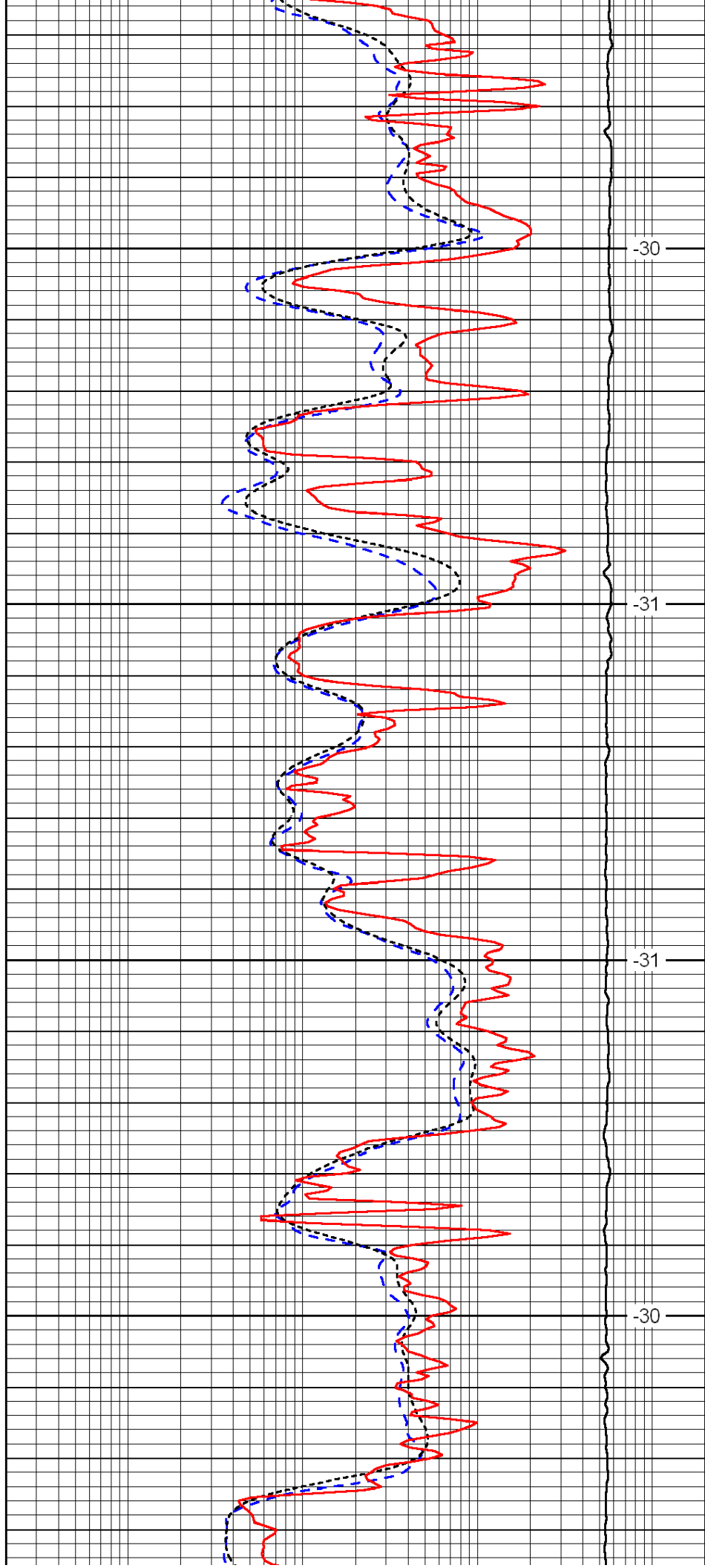


4400

4450

4500

4550

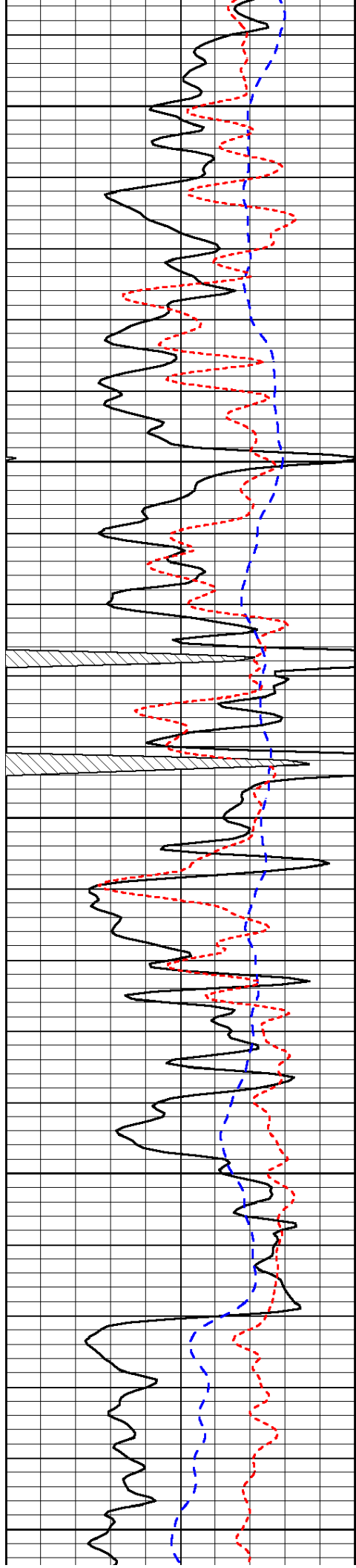


-30

-31

-31

-30



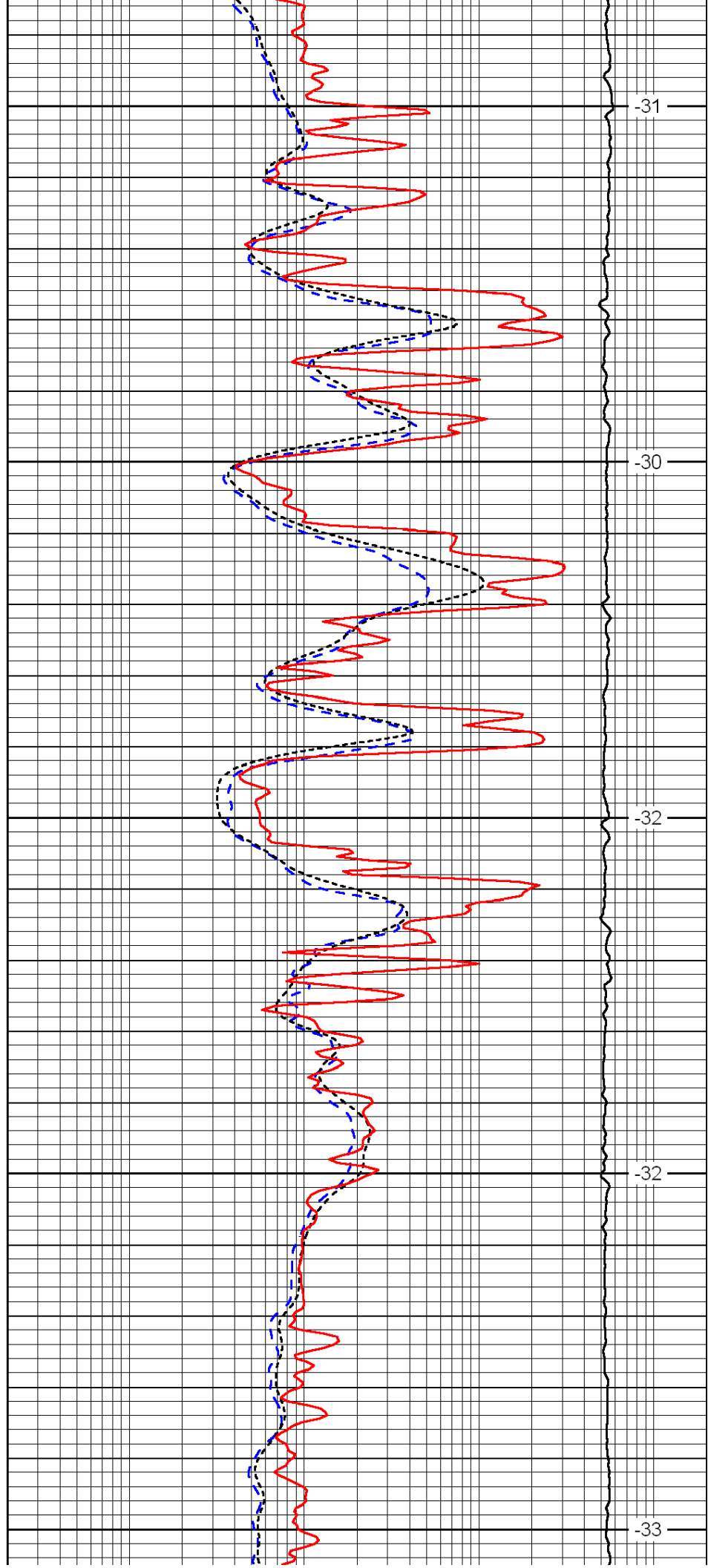
4600

4650

4700

4750

4800



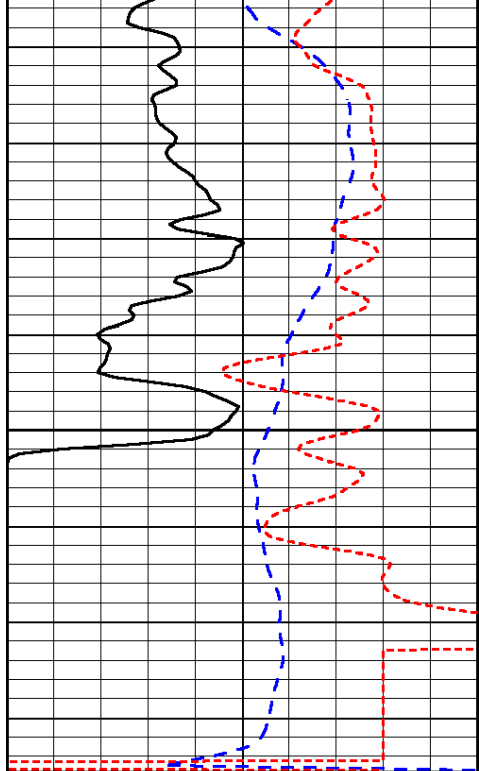
-31

-30

-32

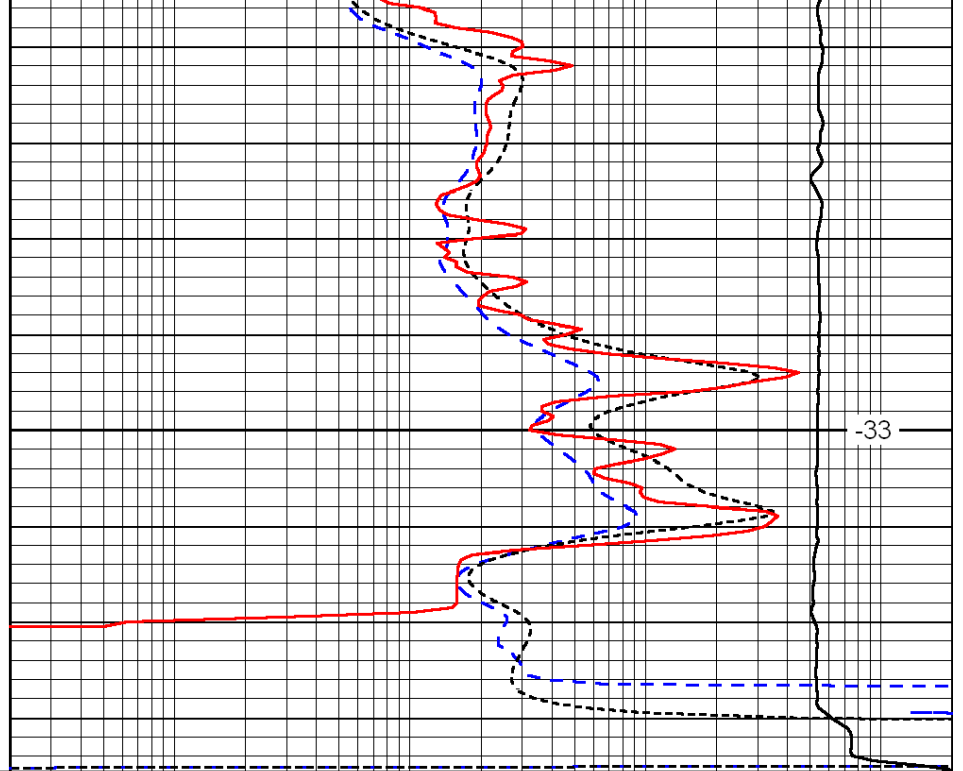
-32

-33



0	Gamma Ray	150
-200	SP (mV)	0
-160	Rxo / Rt	40

4850



-33

0.2	Deep Resistivity	2000
0.2	Medium Resistivity	2000
0.2	Shallow Resistivity	2000
15000	Line Tension	0

LSPD