



# Dual Compensated Porosity Log

**DIGITAL LOG** (785) 625-3858

API No. 15-097-21,673-00-00

Company **L.D. Drilling, Inc.**  
Well **Anthony No.1-27**  
Field **Kiowa**  
County **Kiowa** State **Kansas**

Location **E/2 E/2 NW SW  
1980' FSL & 1300' FWL**

Other Services  
DIL  
MEI/BHCS

Permanent Datum **Ground Level** Elevation **2182**  
Log Measured From **Kelly Bushing** 12 Ft. Above Perm. Datum  
Drilling Measured From **Kelly Bushing**

Sec: **27** Twp: **27S** Rge: **18W**

Elevation  
K.B. 2194  
D.F. 2182  
G.L. 2182

Date **5/12/2010**

Run Number **One**

Type Log **CNL / CDL**

Depth Driller **4880**

Depth Logger **4879**

Bottom Logged Interval **4858**

Top Logged Interval **2300**

Type Fluid In Hole **Chemical**

Salinity, PPM CL **7,900**

Density **9.1**

Level **Full**

Max. Rec. Temp. F **125**

Operating Rig Time **5 Hours**

Equipment -- Location **15 Hays**

Recorded By **C. Desaire**

Witnessed By **Jim Musgrove**

Borehole Record				Casing Record			
Run No.	Bit	From	To	Size	Wgt.	From	To
1	12.25	00	483	8.625	24#	00	483
2	7.875	483	4880				

<<< Fold Here >>>

All interpretations are opinions based on inferences from electrical or other measurements and we cannot and do not guarantee the accuracy or correctness of any interpretation, and we shall not, except in the case of gross or willful negligence on our part, be liable or responsible for any loss, costs, damages, or expenses incurred or sustained by anyone resulting from any interpretation made by any of our officers, agents or employees. These interpretations are also subject to our general terms and conditions set out in our current Price Schedule.

**Comments**

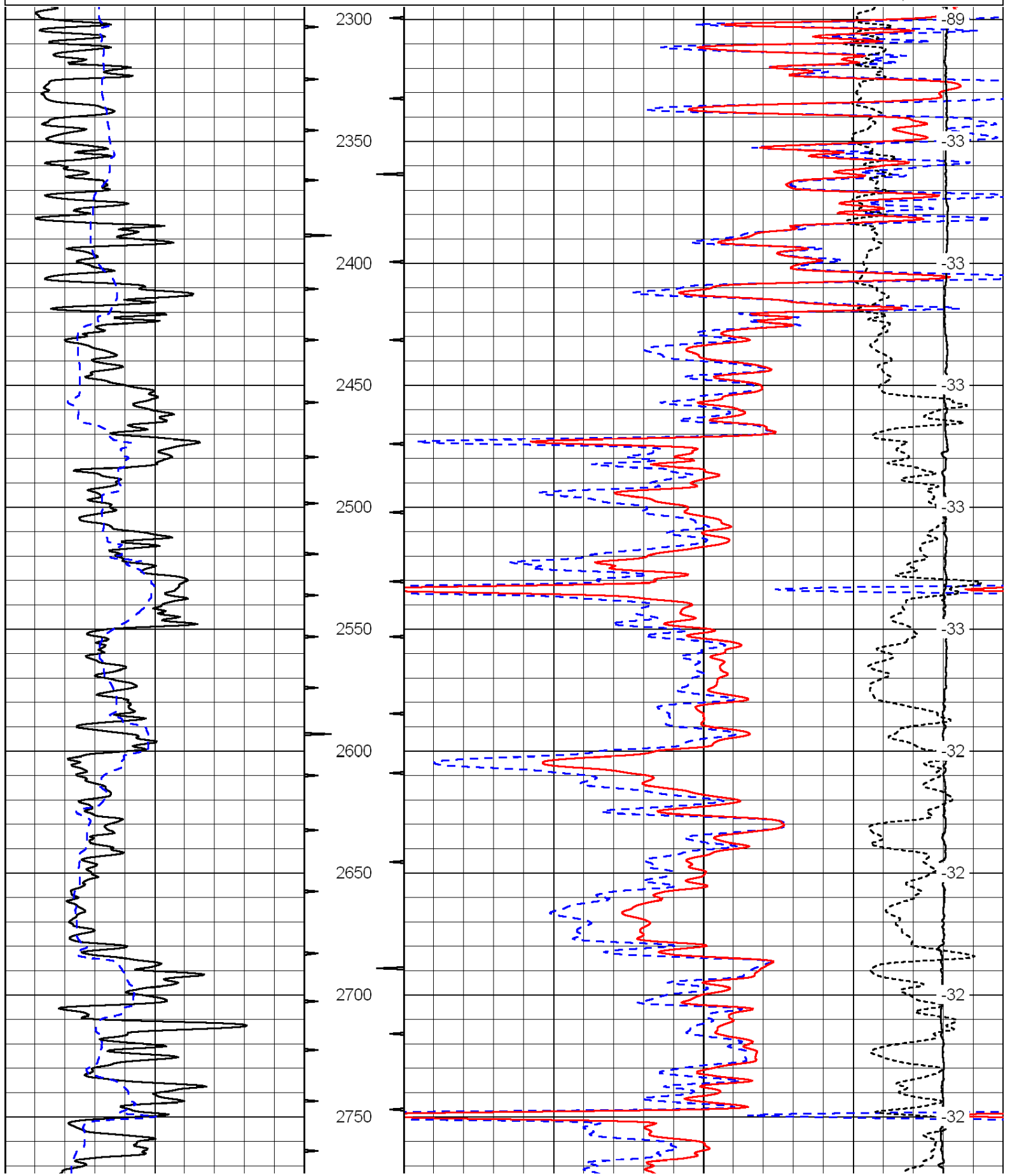
Thank you for using Log-Tech, Inc.  
(785) 625-3858

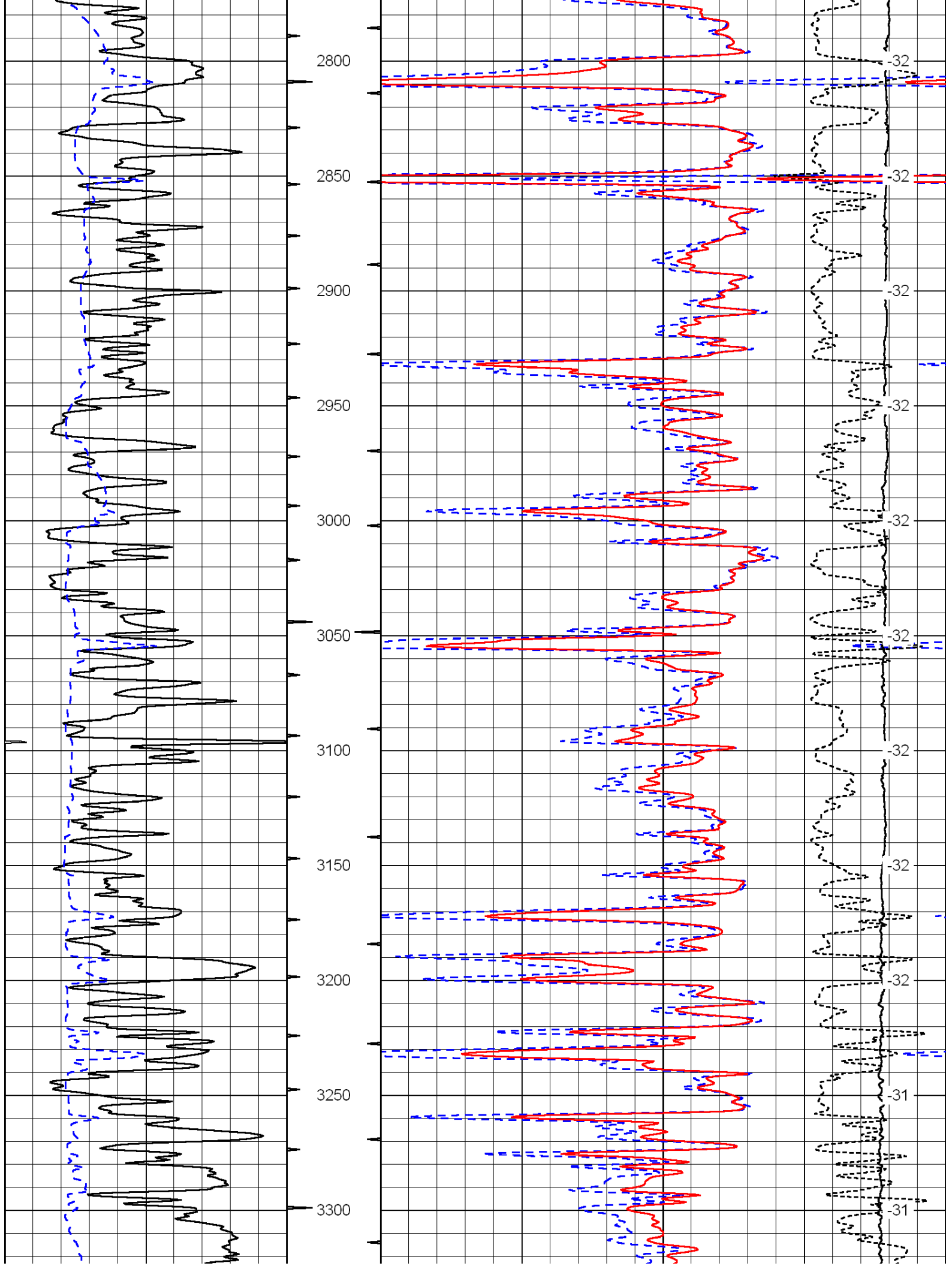
Greensburg, 3 1/2 N of Stoplight, E Into

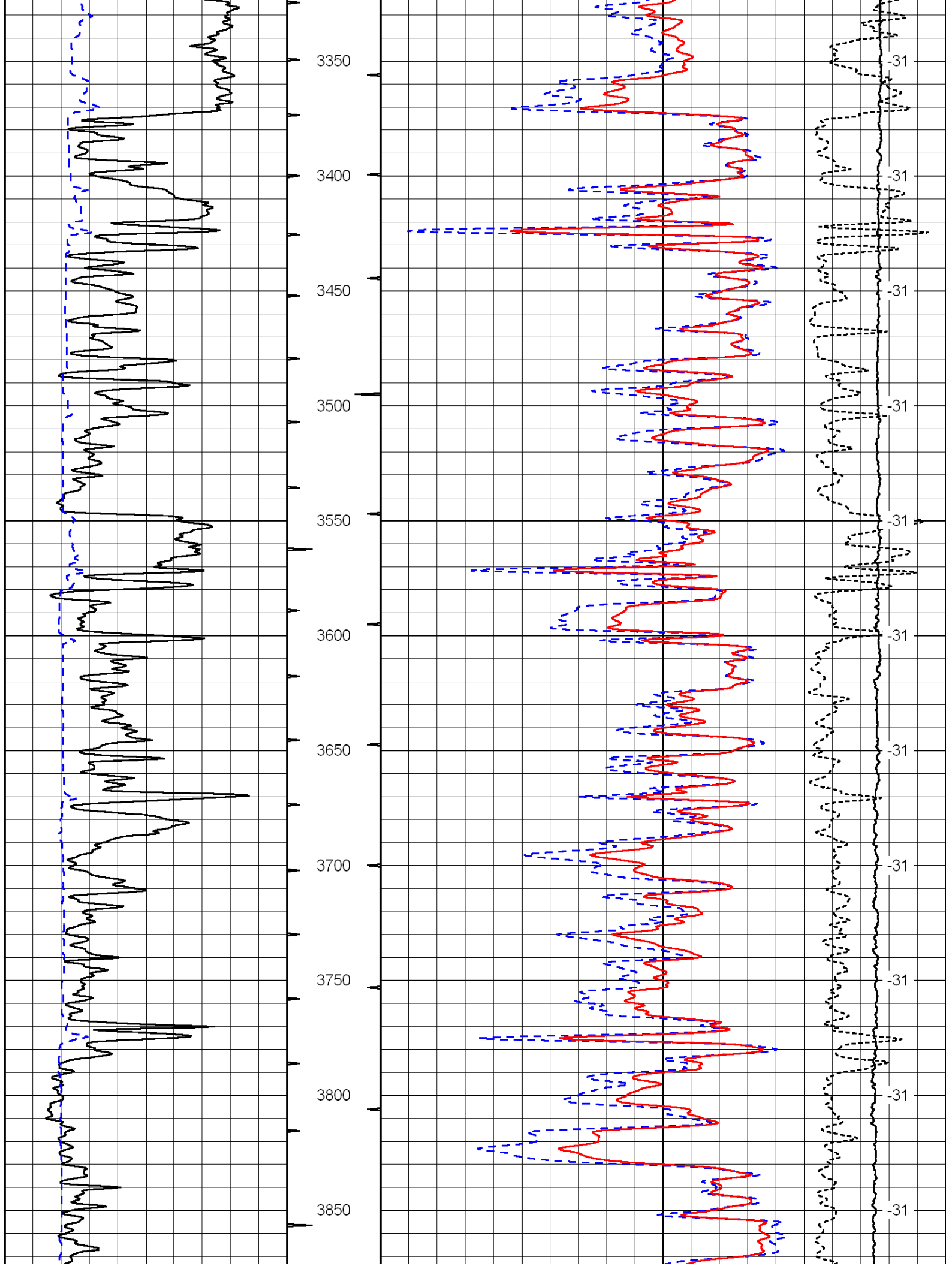
Database File: c:\warrior\data\ld drilling\_anthony no.1-27\ldhd.db  
 Dataset Pathname: dil\ldstk2  
 Presentation Format: cdl  
 Dataset Creation: Thu May 13 12:04:53 2010  
 Charted by: Depth in Feet scaled 1:600

0	Gamma Ray	150
6	Caliper (GAPI)	16

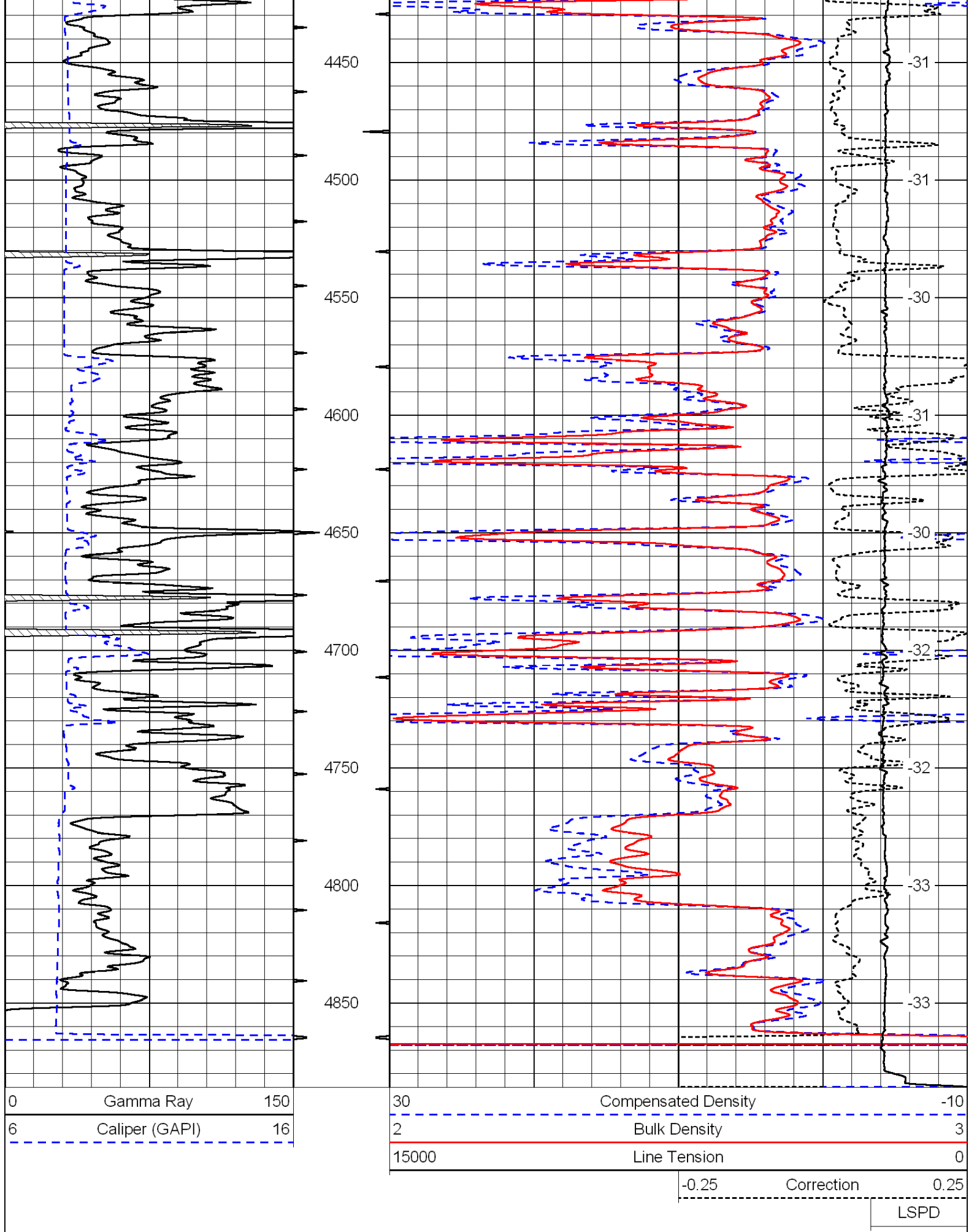
30	Compensated Density	-10
2	Bulk Density	3
15000	Line Tension	0
		-0.25
		Correction
		0.25
		LSPD







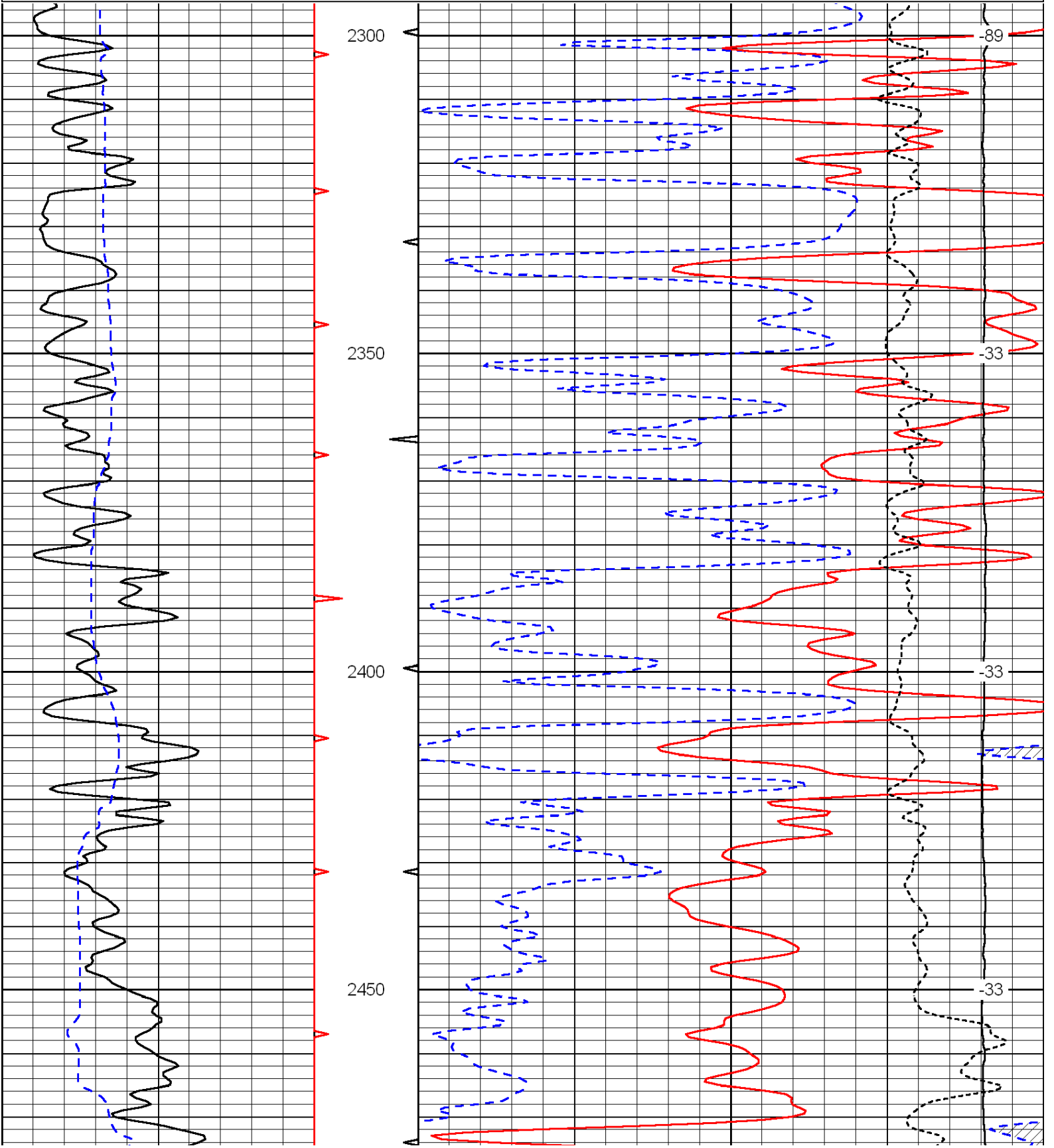


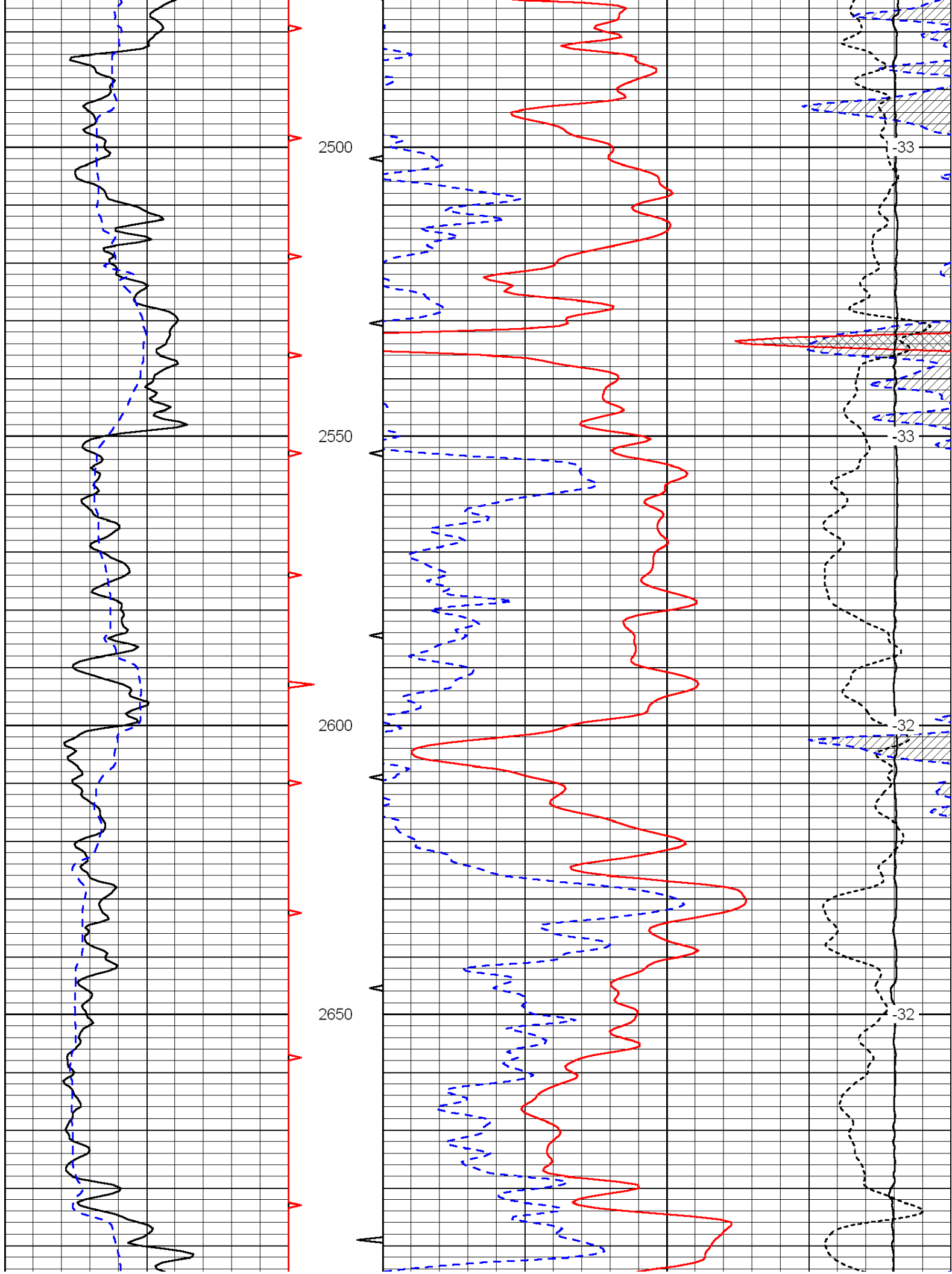


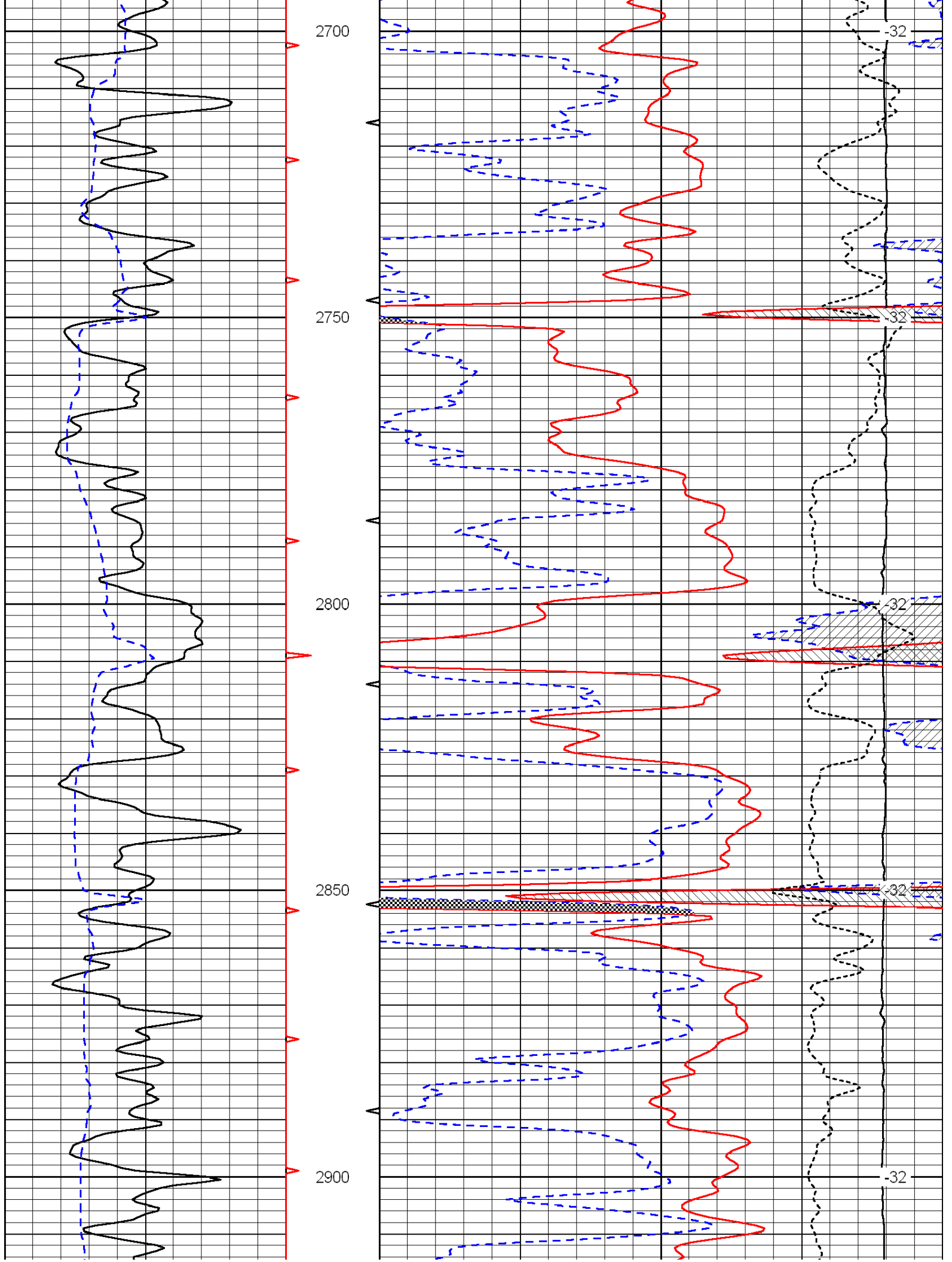
Dataset Pathname: dil/ldstk2  
 Presentation Format: cndlspec  
 Dataset Creation: Thu May 13 12:04:53 2010  
 Charted by: Depth in Feet scaled 1:240

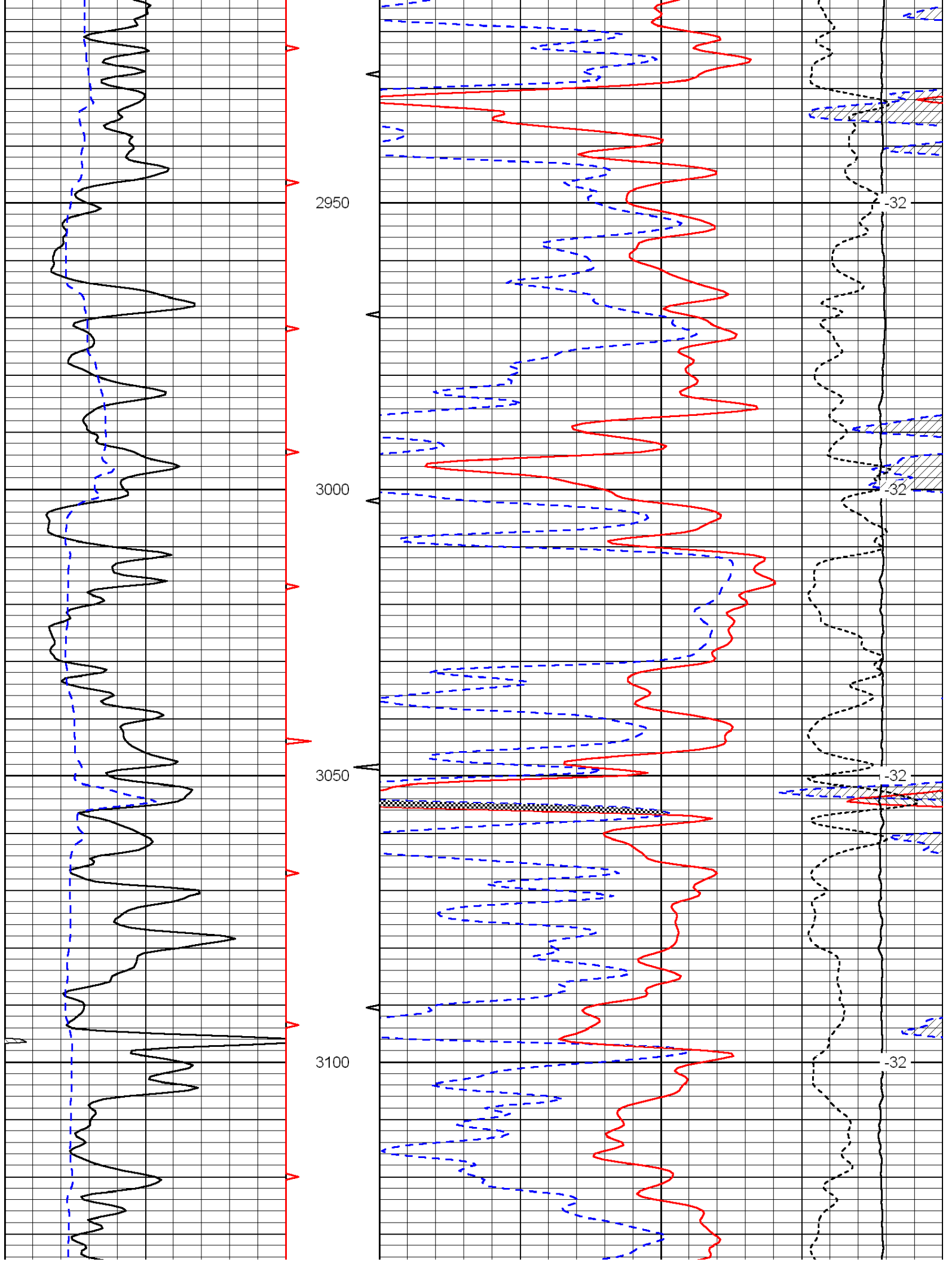
0	Gamma Ray	150
6	Caliper (GAPI)	16

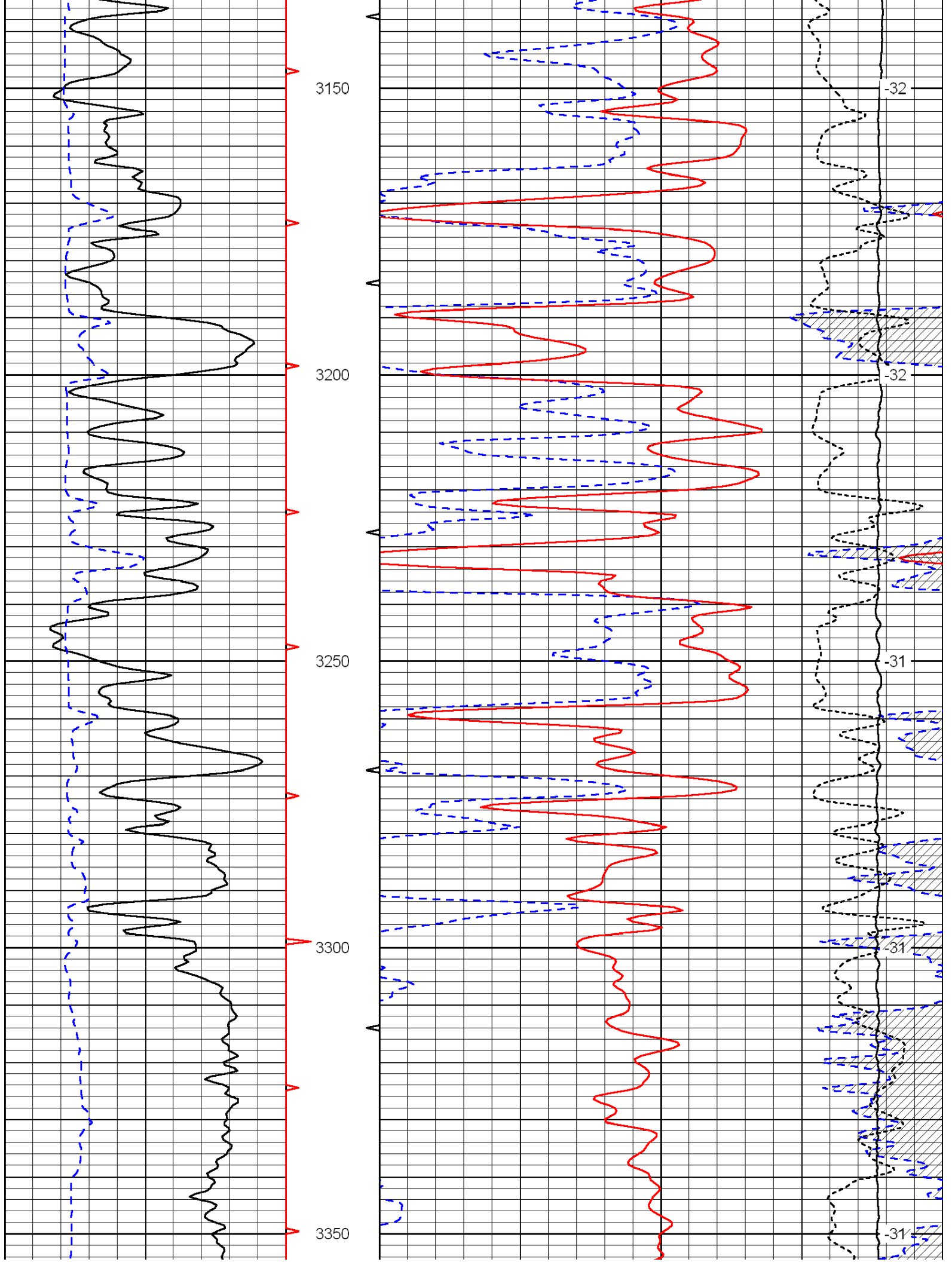
30	Compensated Neutron (Limestone)	-10
30	Compensated Density (2.71 ma)	-10
15000	Line Tension	0
-0.25	Correction	0.25
		LSPD

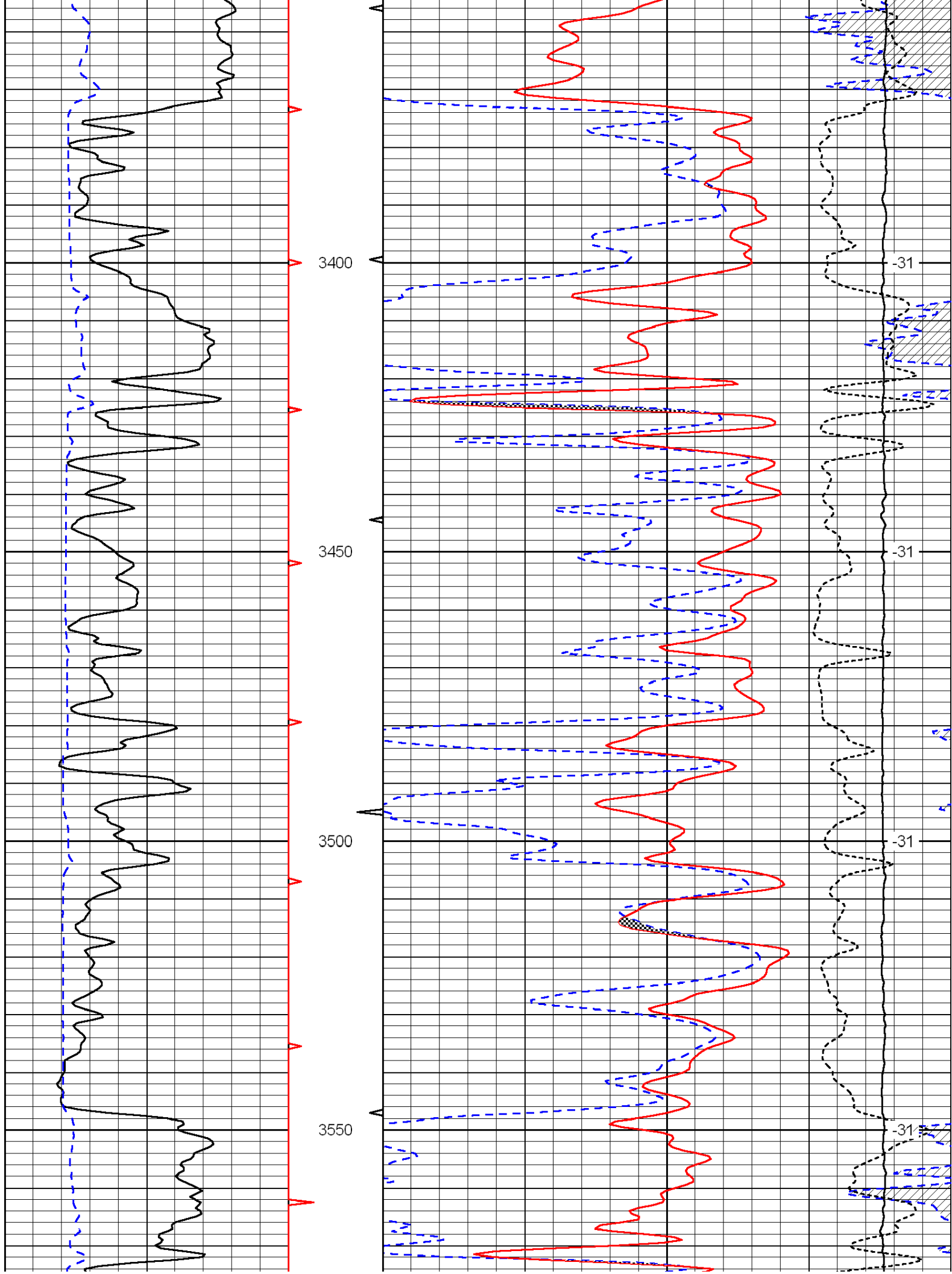


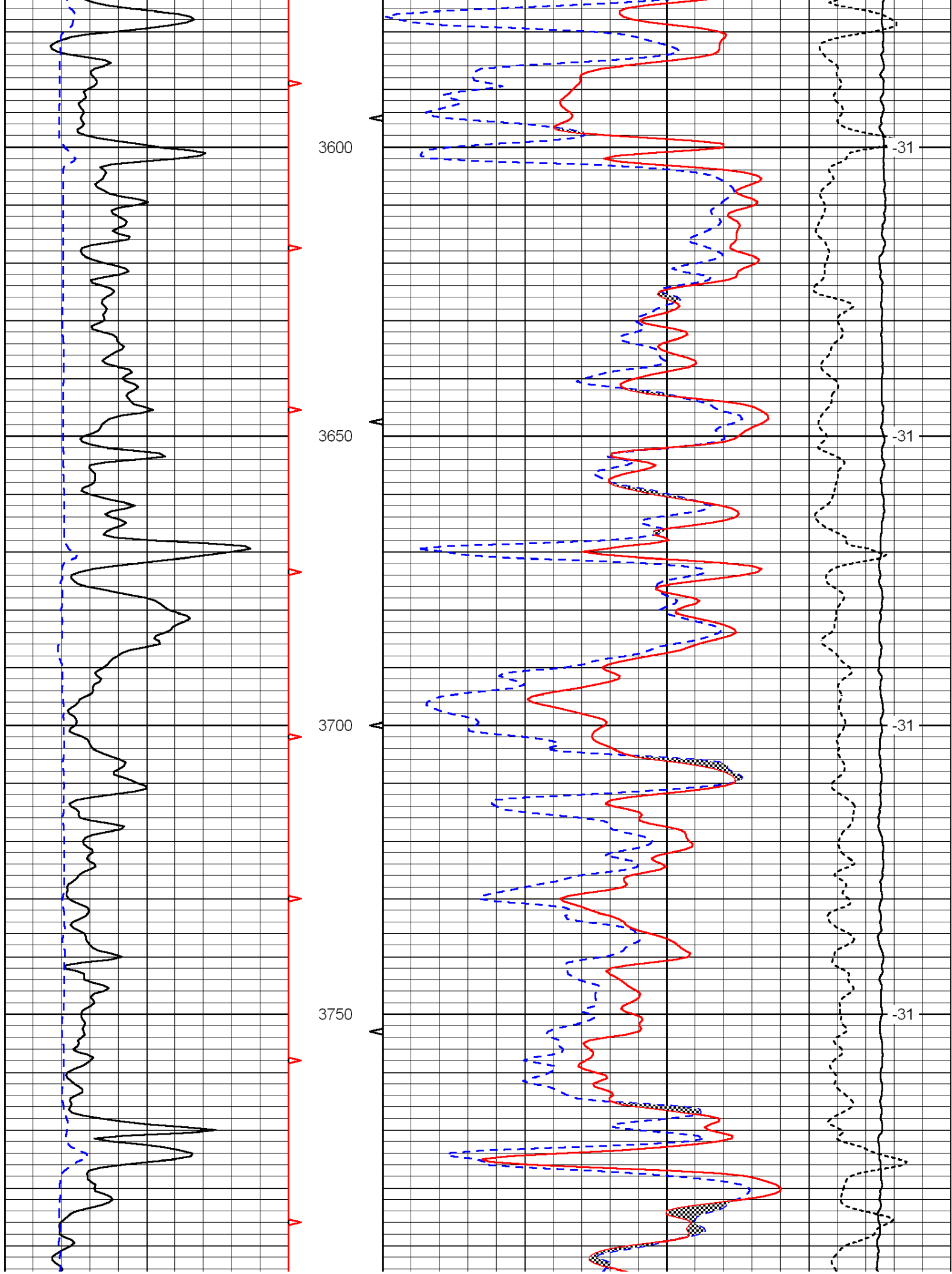


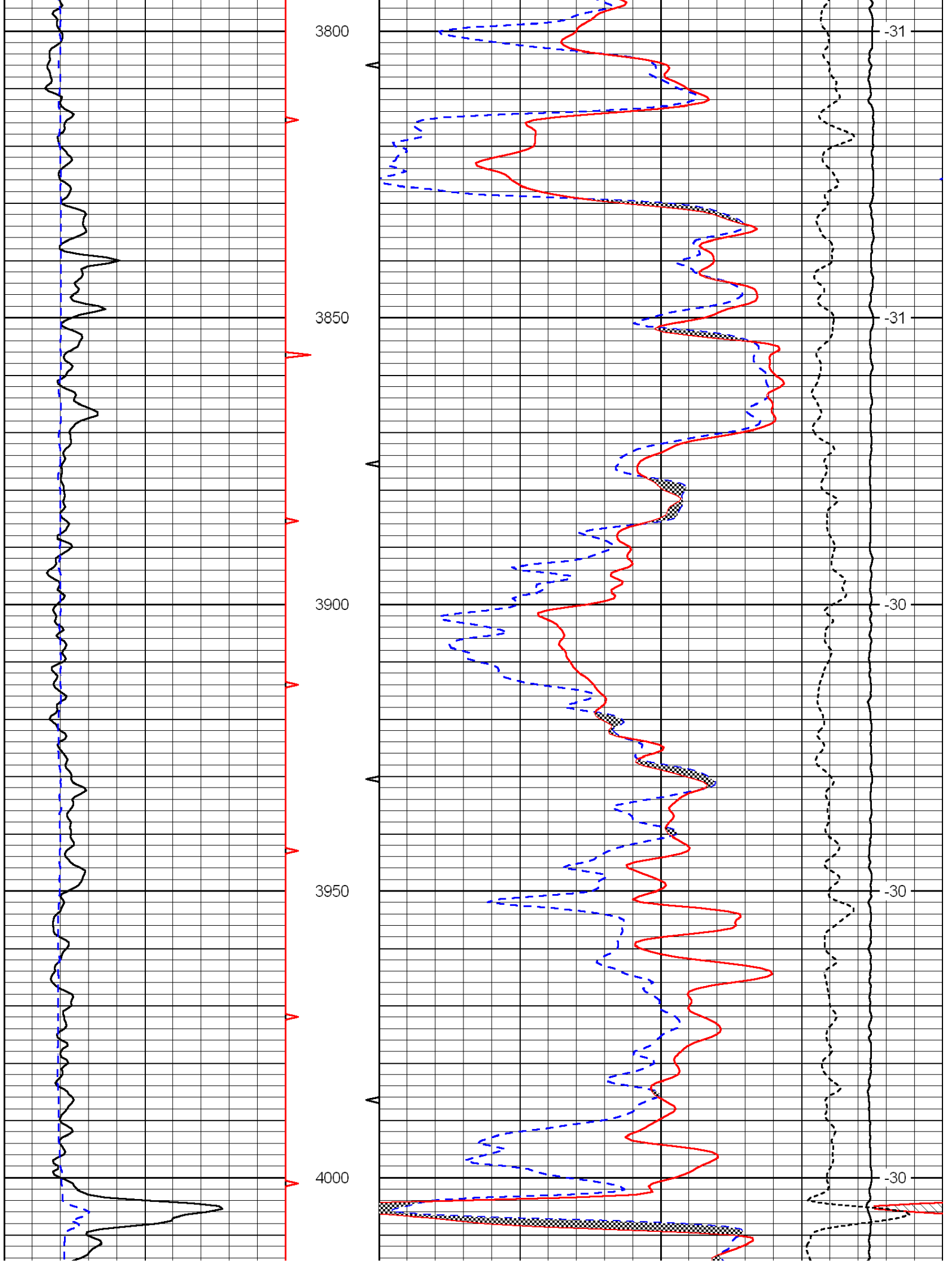


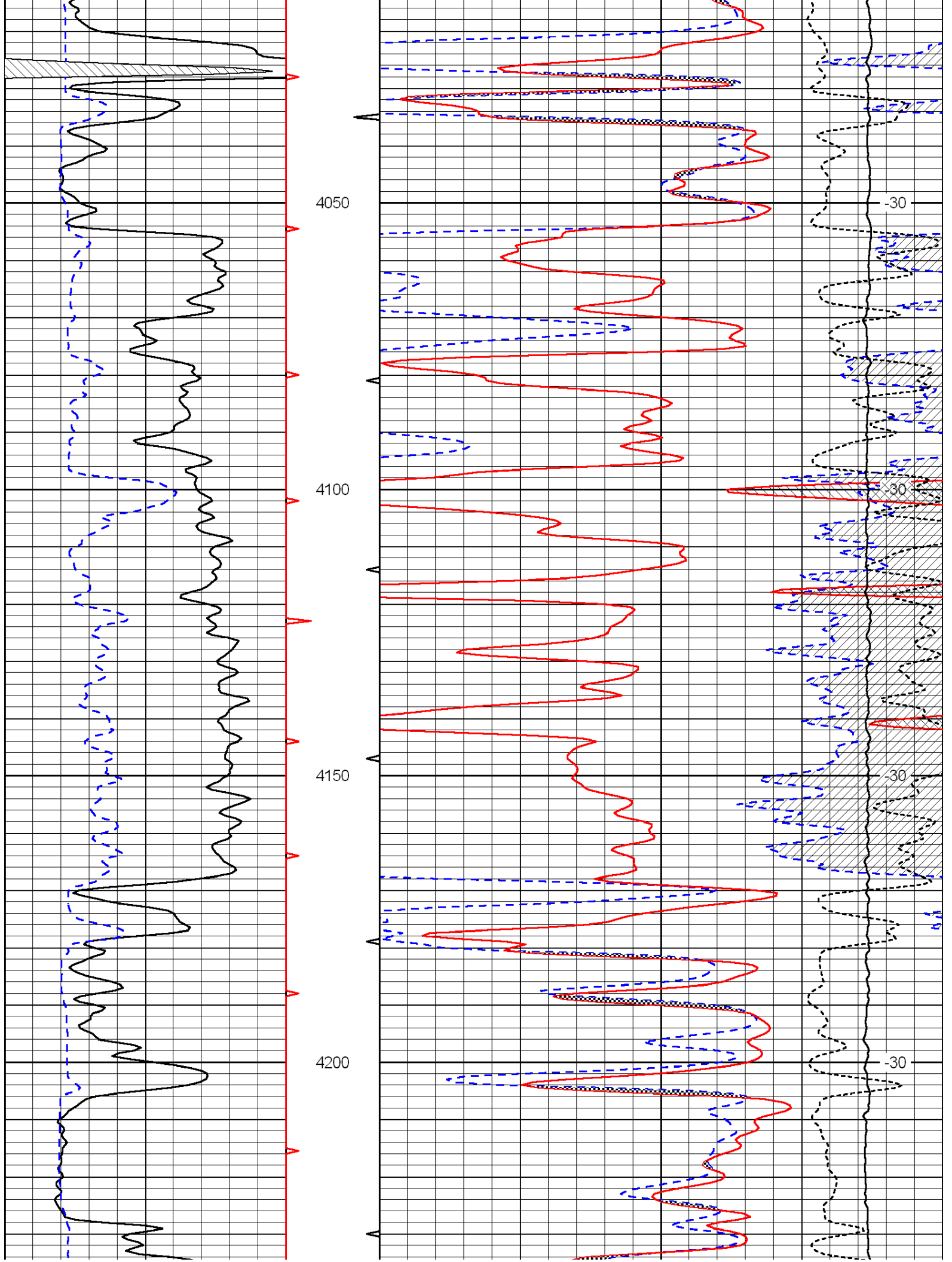


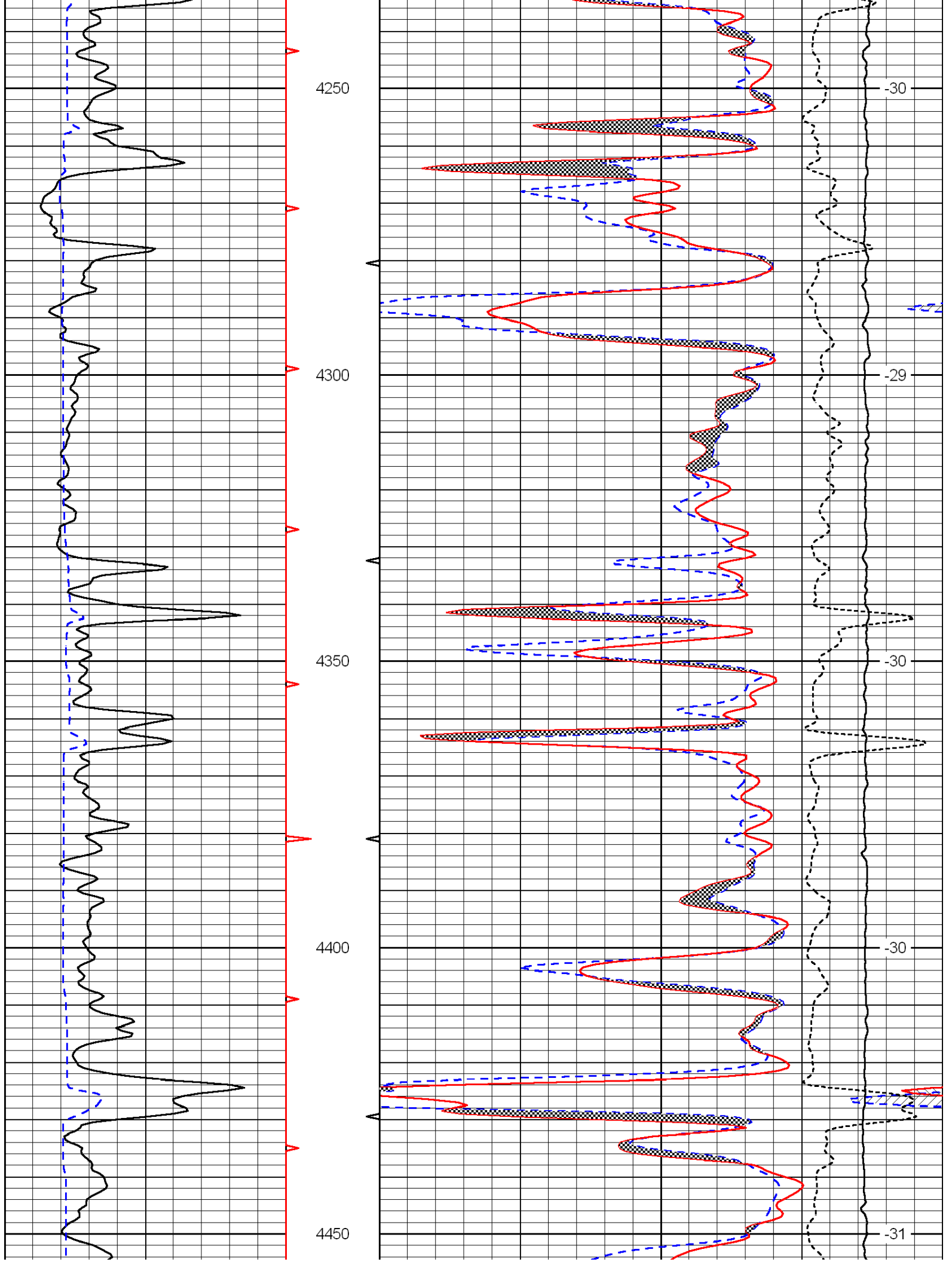




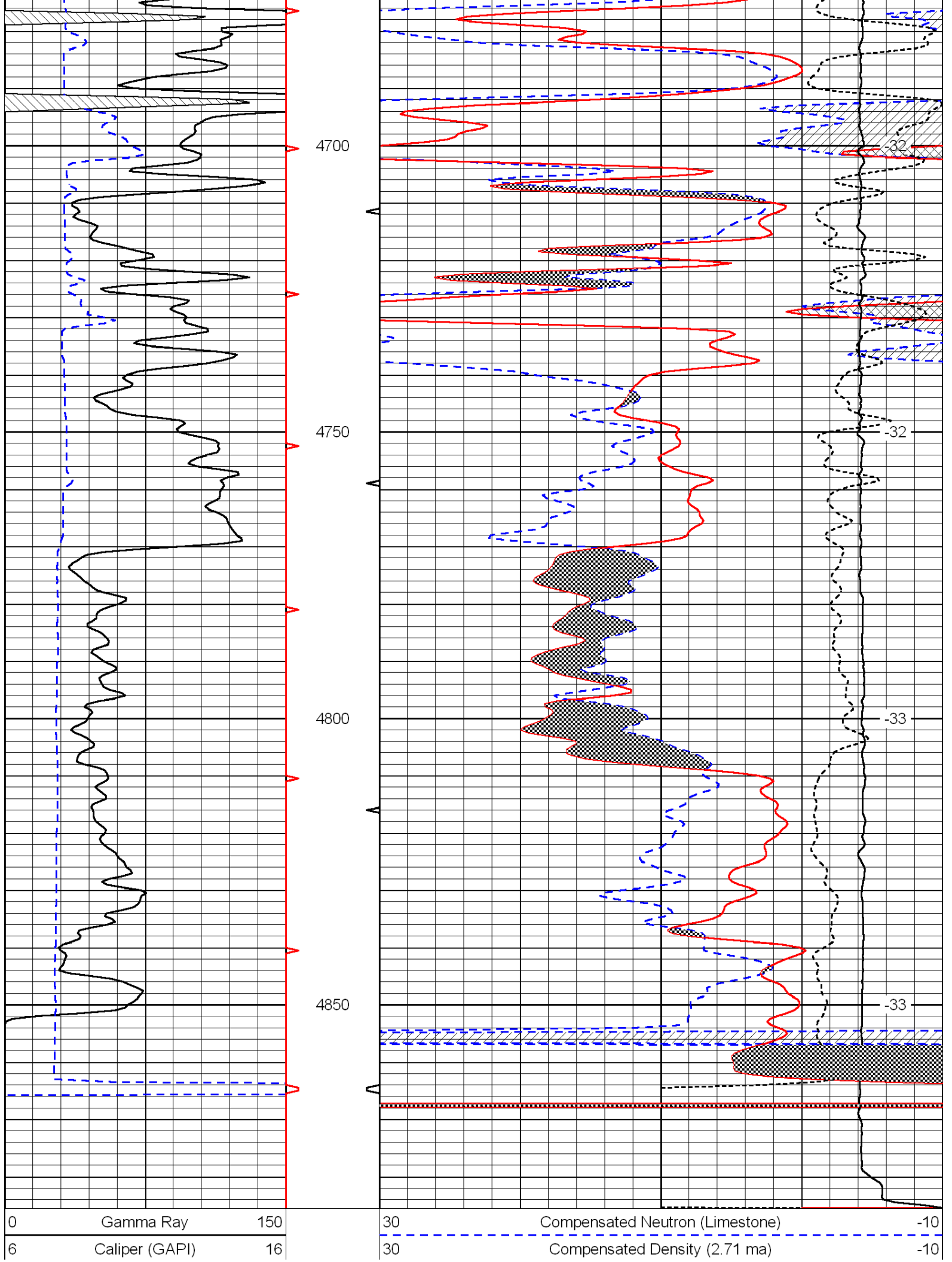












15000	Line Tension	0	
	-0.25	Correction	0.25
	LSPD		