



Pioneer Energy Services

# Dual Induction Log

|                        |                         |                         |                                  |
|------------------------|-------------------------|-------------------------|----------------------------------|
| API No.                | 15-109-21123-00-00      |                         |                                  |
| Company                | New Gulf Operating, LLC |                         |                                  |
| Well                   | Prairie Dog #1-05       |                         |                                  |
| Field                  | Wildcat                 |                         |                                  |
| County                 | Logan                   | State                   | Kansas                           |
| Location               | 2970' FSL & 330' FWL    |                         |                                  |
| Sec: 5                 | Twp: 15S                | Rge: 34W                | Other Services<br>CNL/CDL<br>MEL |
| Permanent Datum        | Ground Level            | Elevation 2971          | Elevation                        |
| Log Measured From      | Kelly Bushing           | 9 Ft. Above Perm. Datum | K.B. 2980                        |
| Drilling Measured From | Kelly Bushing           |                         | D.F. 2971                        |
|                        |                         |                         | G.L. 2971                        |

|                        |                |
|------------------------|----------------|
| Date                   | 8/30/2012      |
| Run Number             | One            |
| Depth Driller          | 4740           |
| Depth Logger           | 4744           |
| Bottom Logged Interval | 4743           |
| Top Log Interval       | 250            |
| Casing Driller         | 8.625 @ 263    |
| Casing Logger          | 263            |
| Bit Size               | 7.875          |
| Type Fluid in Hole     | Chemical       |
| Salinity, ppm CL       | 7200           |
| Density / Viscosity    | 9.4 54         |
| pH / Fluid Loss        | 10.0 8.8       |
| Source of Sample       | Flowline       |
| Rm @ Meas. Temp        | 0.65 @ 80      |
| Rmf @ Meas. Temp       | 0.49 @ 80      |
| Rmc @ Meas. Temp       | 0.88 @ 80      |
| Source of Rmf / Rmc    | Charts         |
| Rm @ BHT               | 0.42 @ 123     |
| Operating Rig Time     | 5 Hours        |
| Max Rec. Temp. F       | 123            |
| Equipment Number       | 17             |
| Location               | Hays           |
| Recorded By            | R. Barnhart    |
| Witnessed By           | John Goldsmith |

<<< Fold Here >>>

All interpretations are opinions based on inferences from electrical or other measurements and we cannot and do not guarantee the accuracy or correctness of any interpretation, and we shall not, except in the case of gross or willful negligence on our part, be liable or responsible for any loss, costs, damages, or expenses incurred or sustained by anyone resulting from any interpretation made by any of our officers, agents or employees. These interpretations are also subject to our general terms and conditions set out in our current Price Schedule.

### Comments

Thank you for using Log-Tech, Inc.  
 (785) 625-3858  
 Russell Springs, KS:  
 1E, 8 1/2S, 2E, S into

Database File: newgulfd.db  
 Dataset Pathname: dil/ngmain  
 Presentation Format: dil2in  
 Dataset Creation: Fri Aug 31 01:16:06 2012  
 Charted by: Depth in Feet scaled 1:600

0 Gamma Ray 150  
-200 SP 0

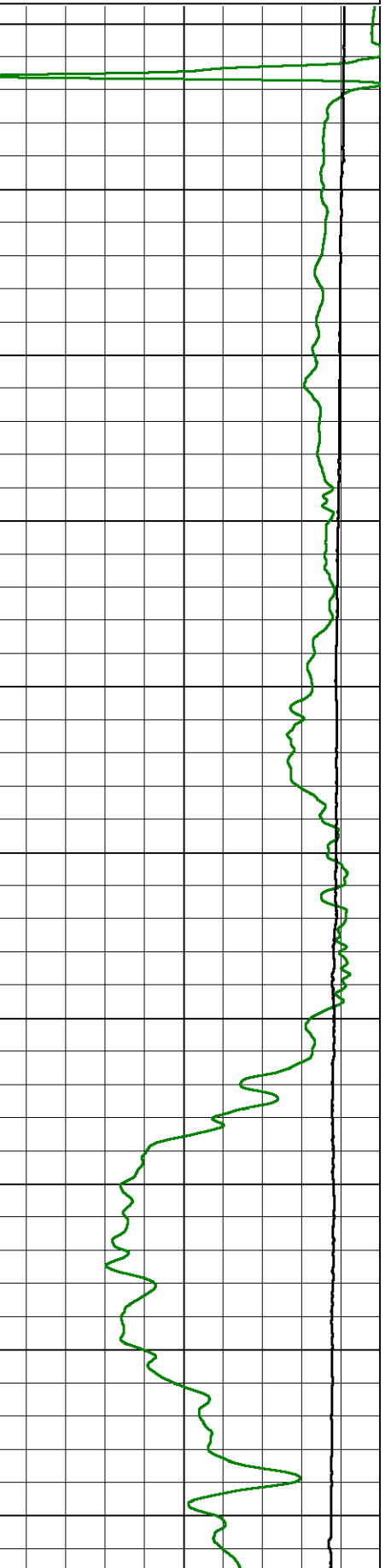
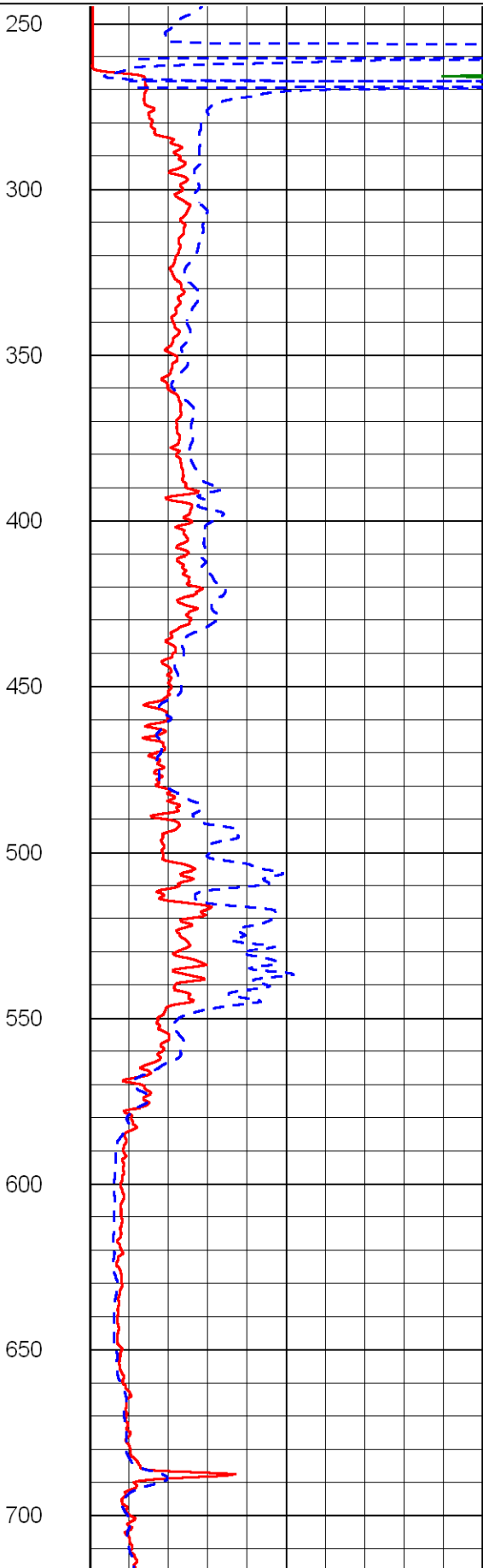
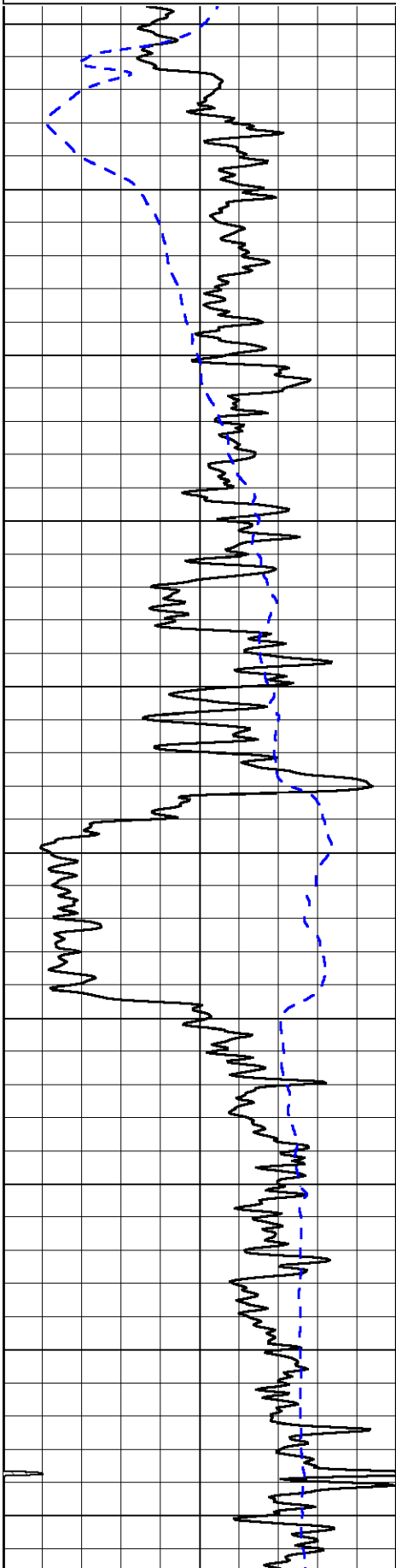
0 Shallow Resistivity 50  
0 Deep Resistivity 50

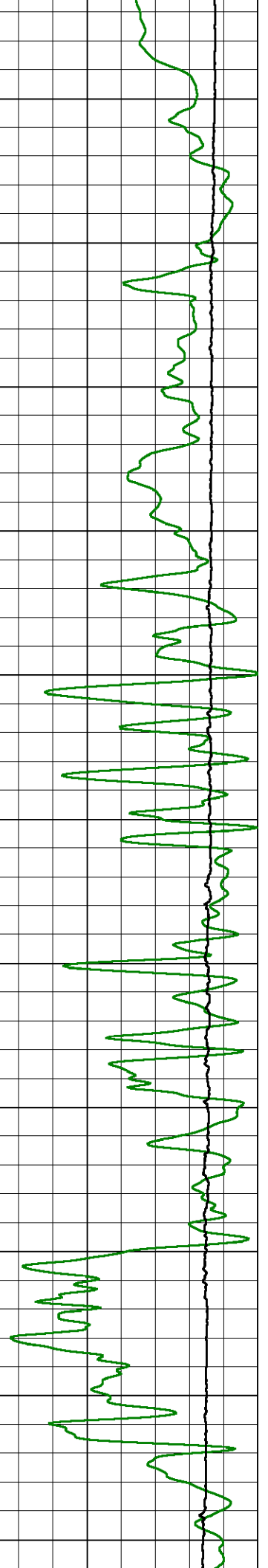
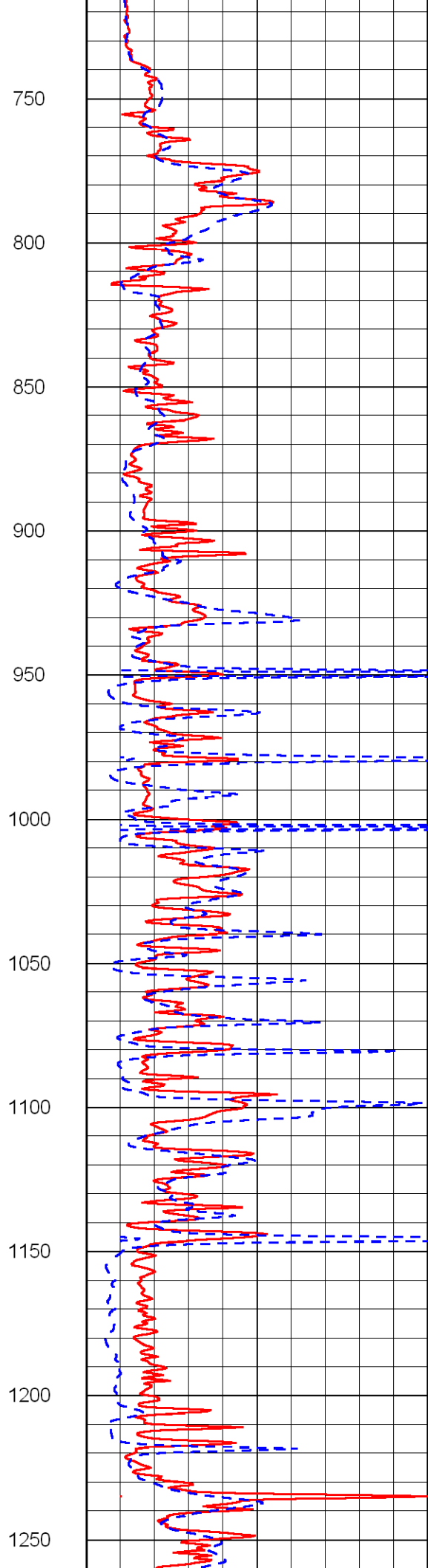
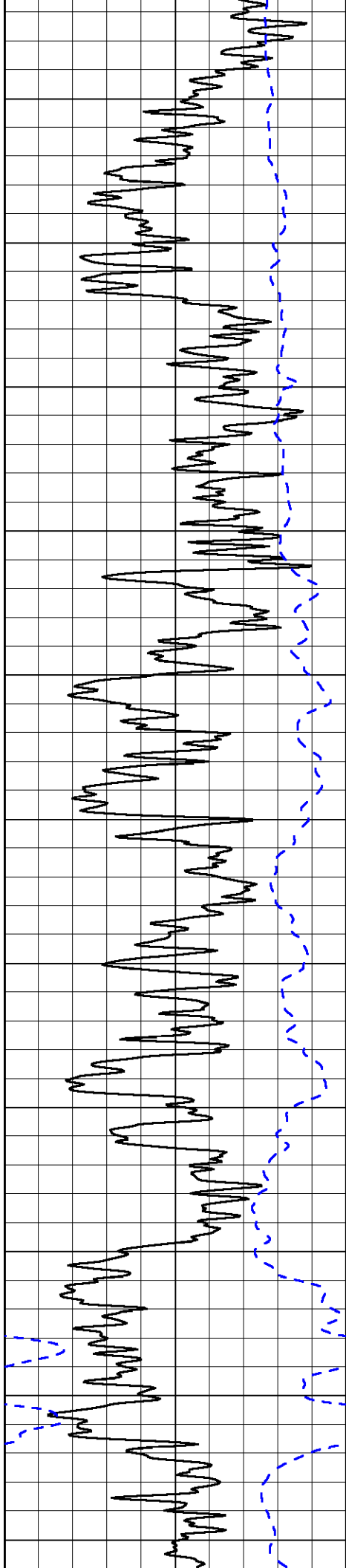
1000 Conductivity 0

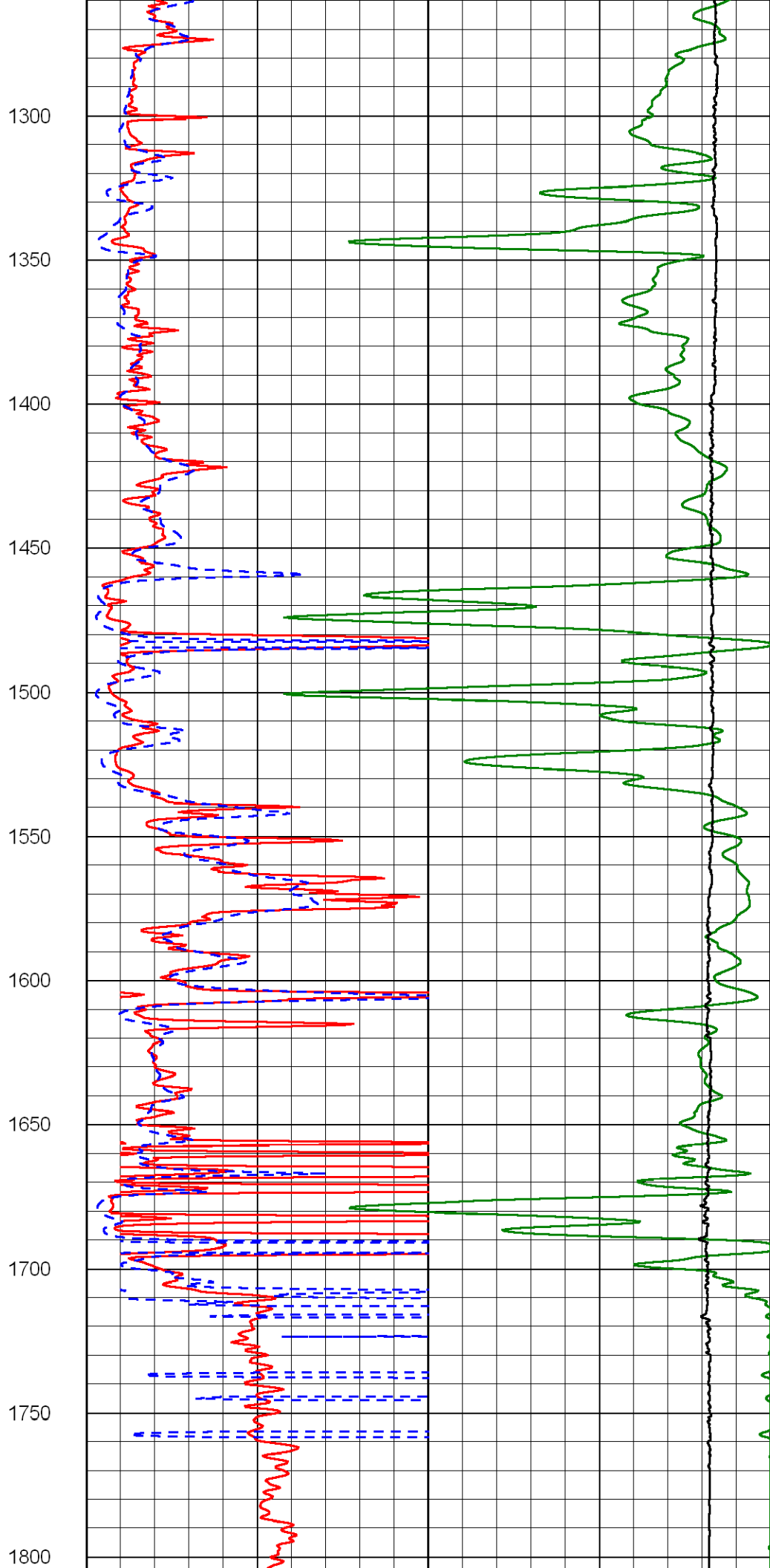
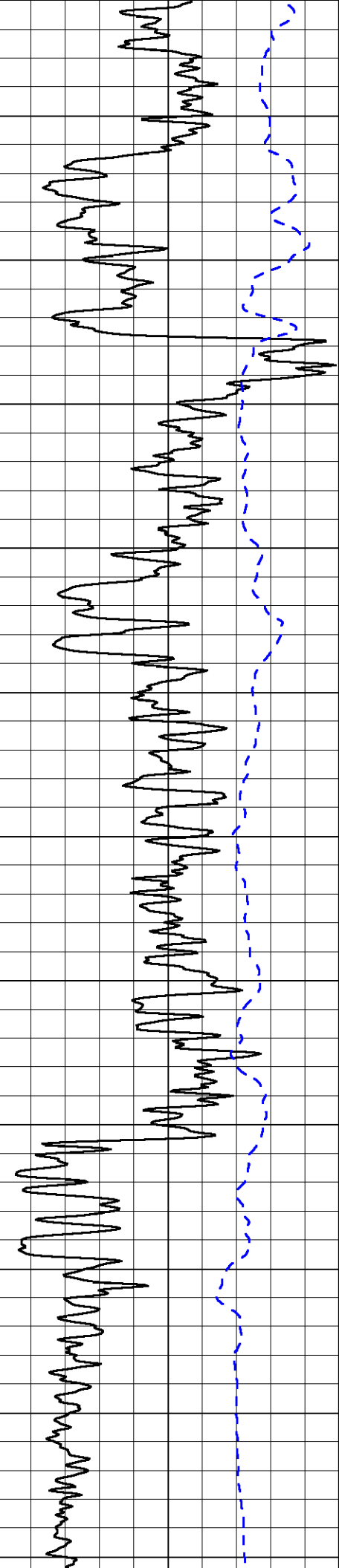
15000 Line Tension 0

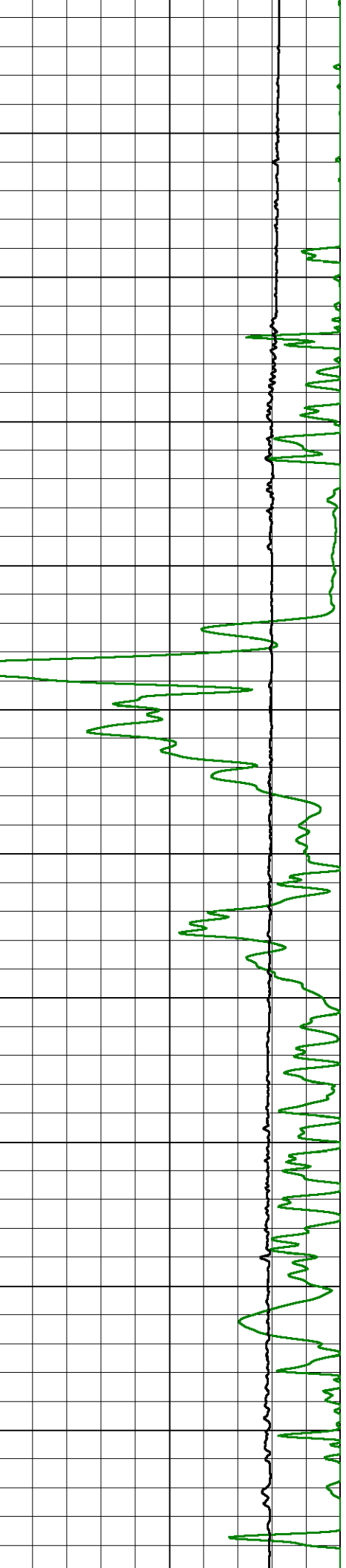
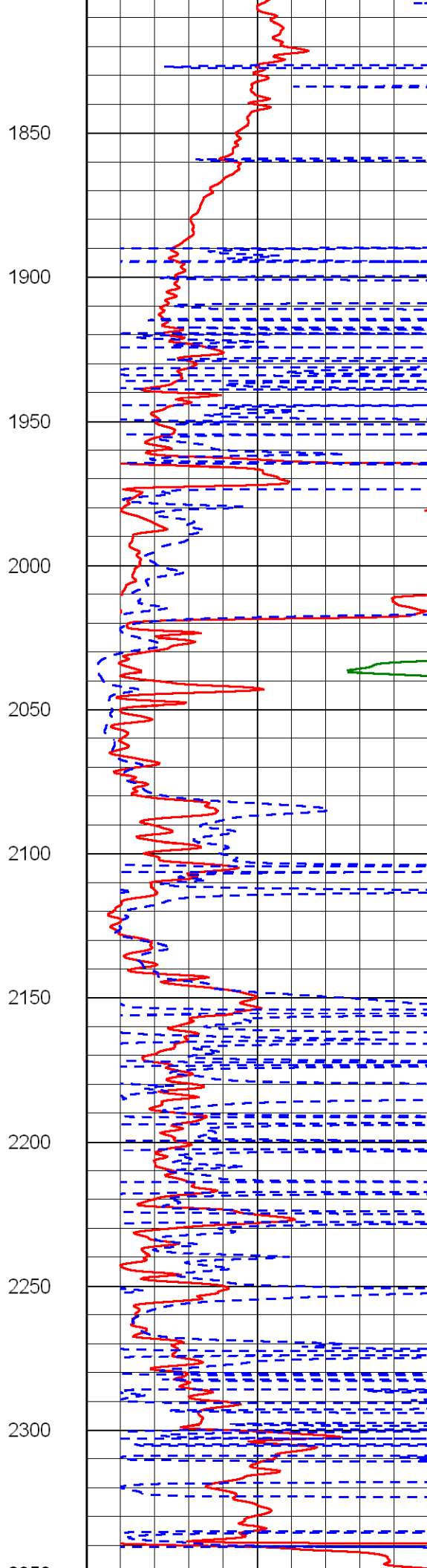
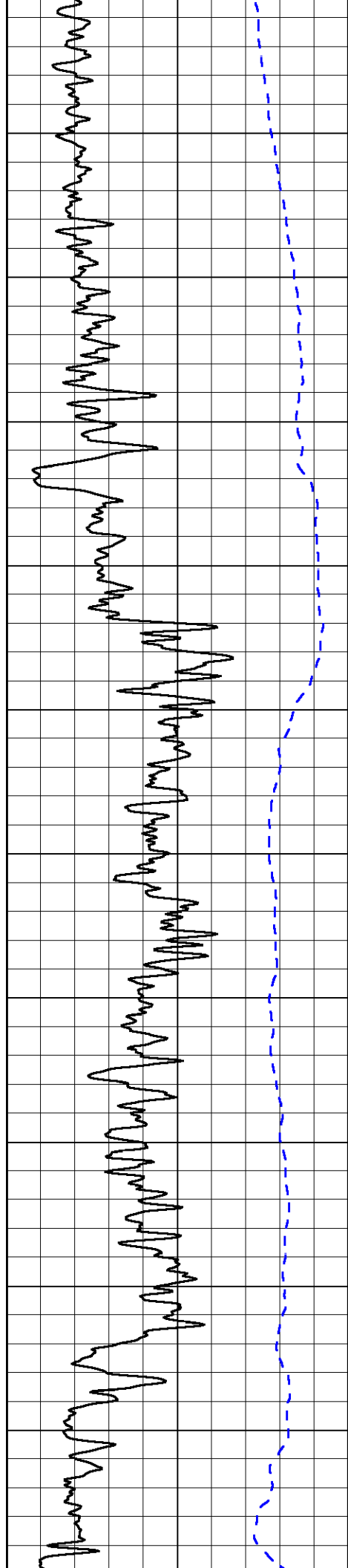
50 Shallow Resistivity 500

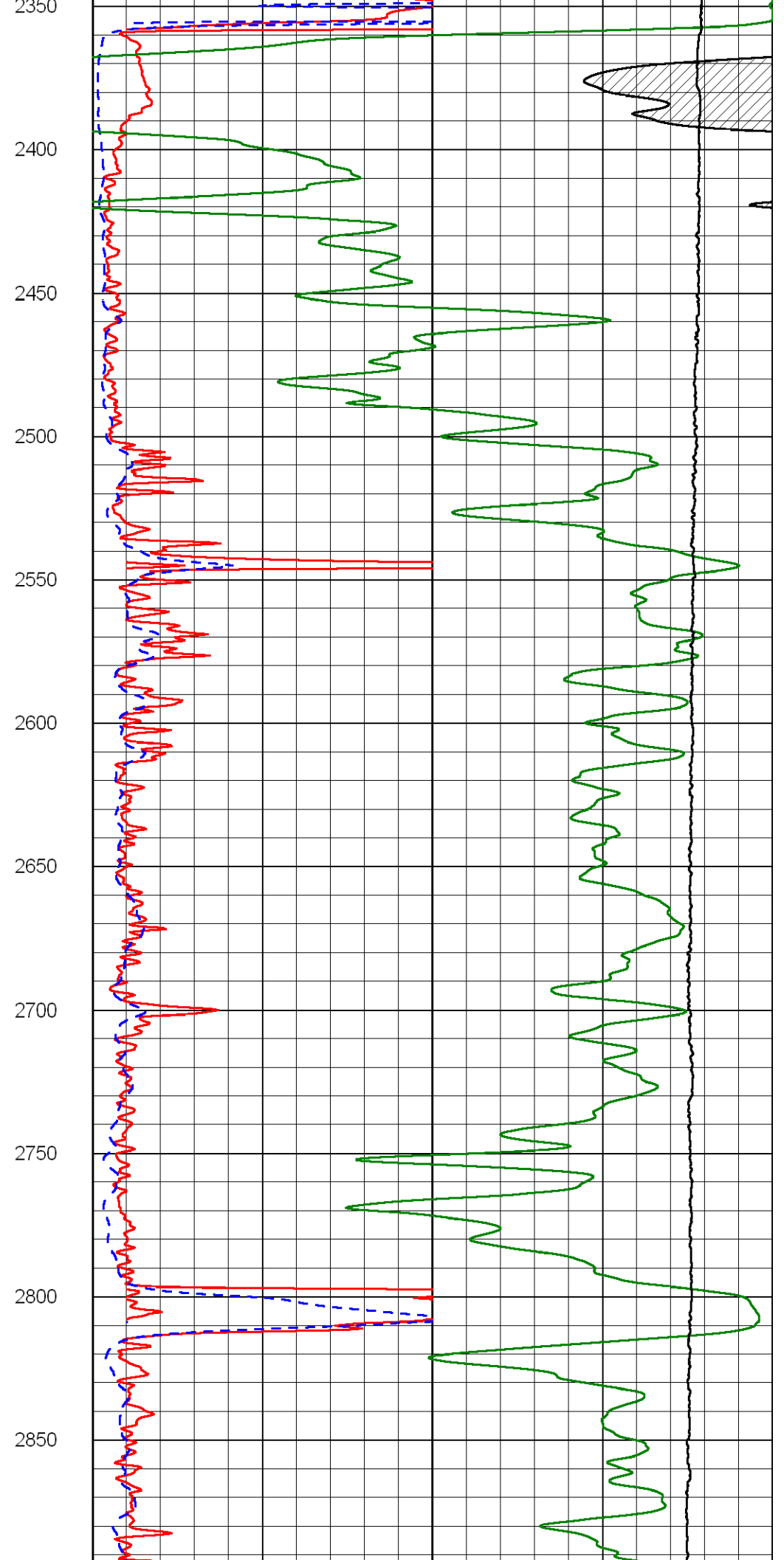
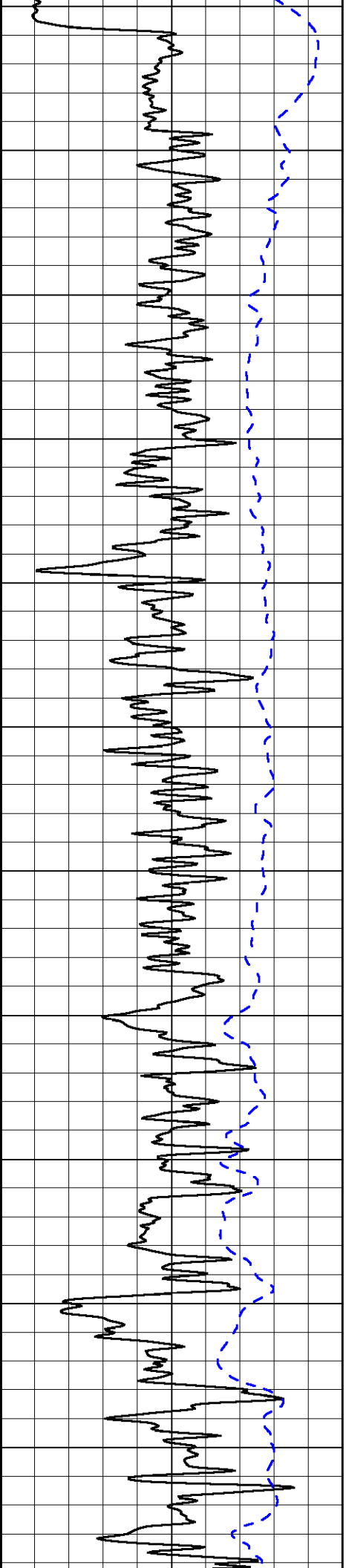
50 Deep Resistivity 500

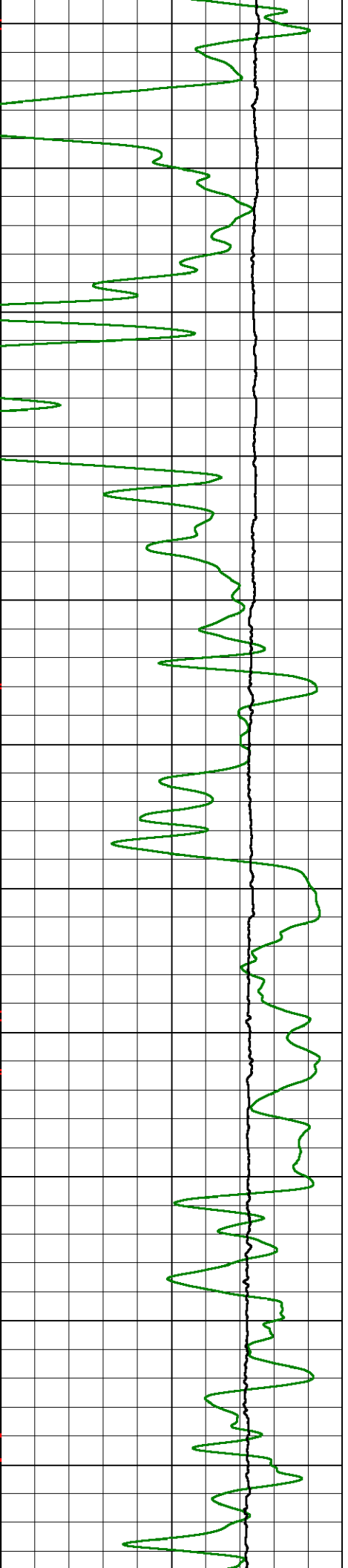
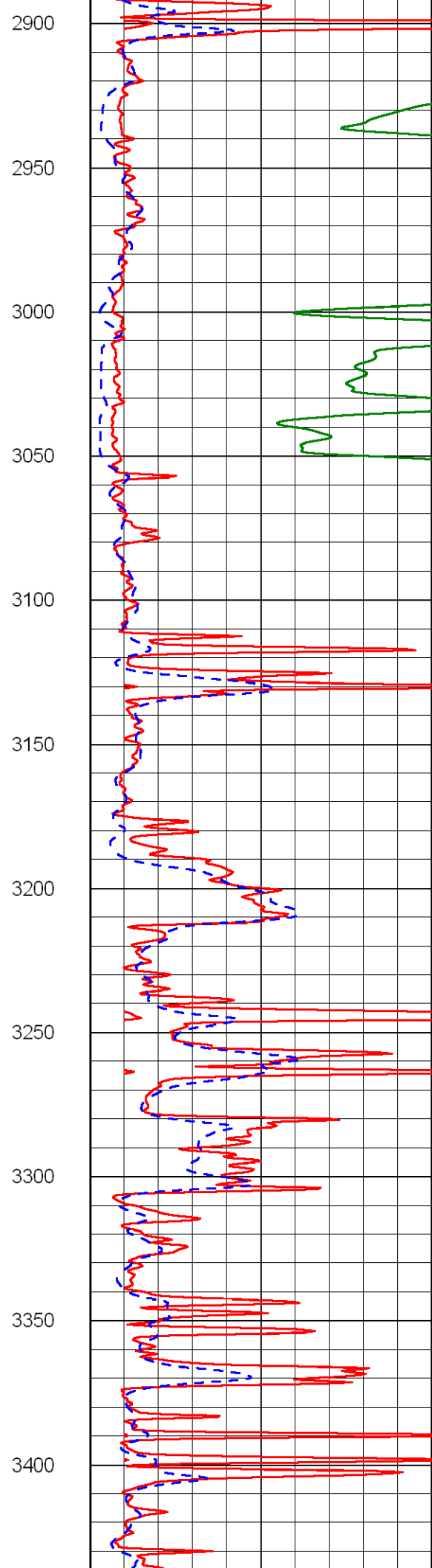
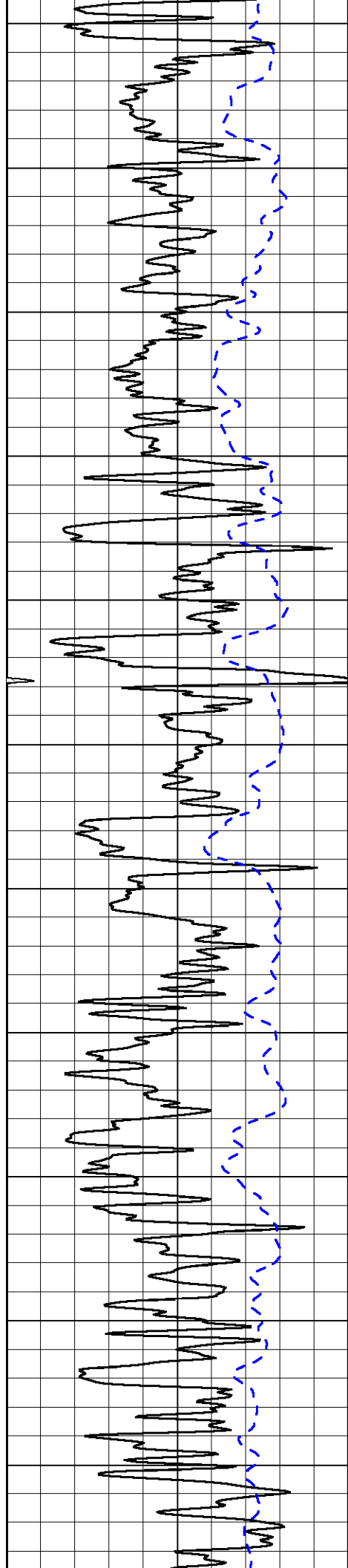


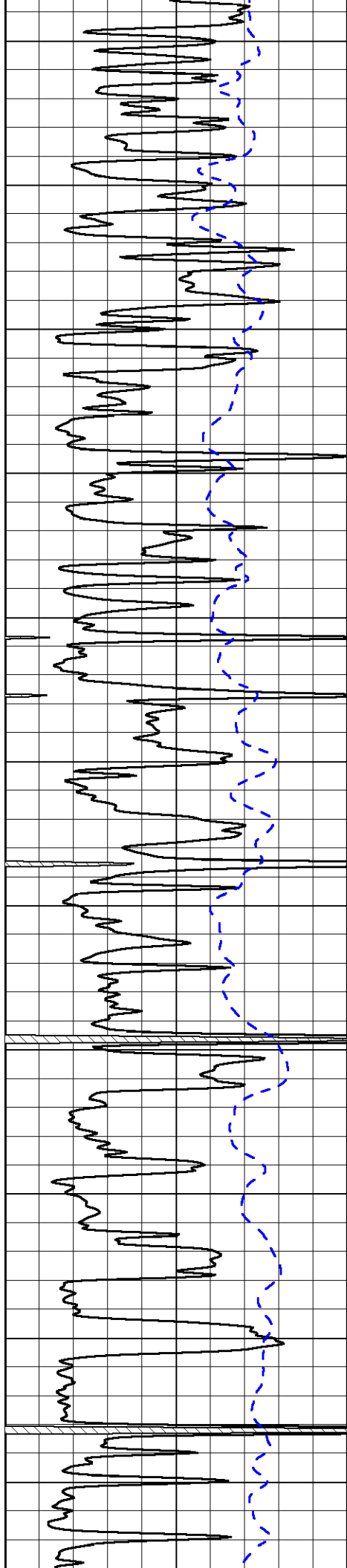












3450

3500

3550

3600

3650

3700

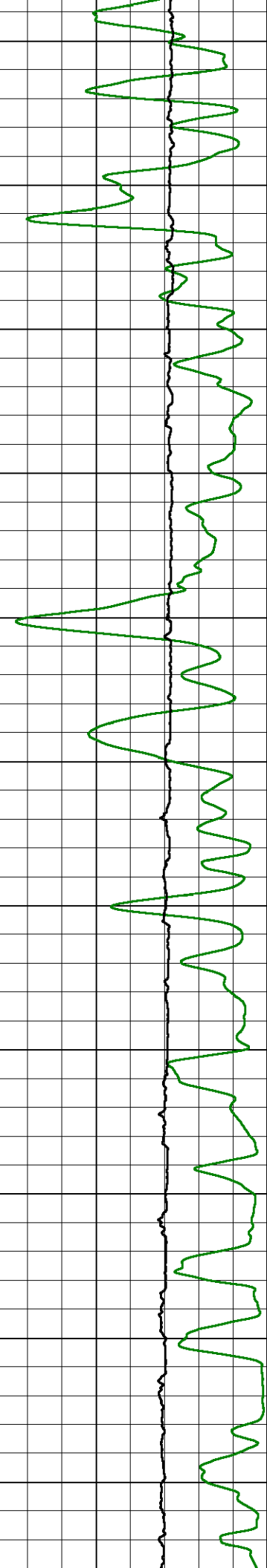
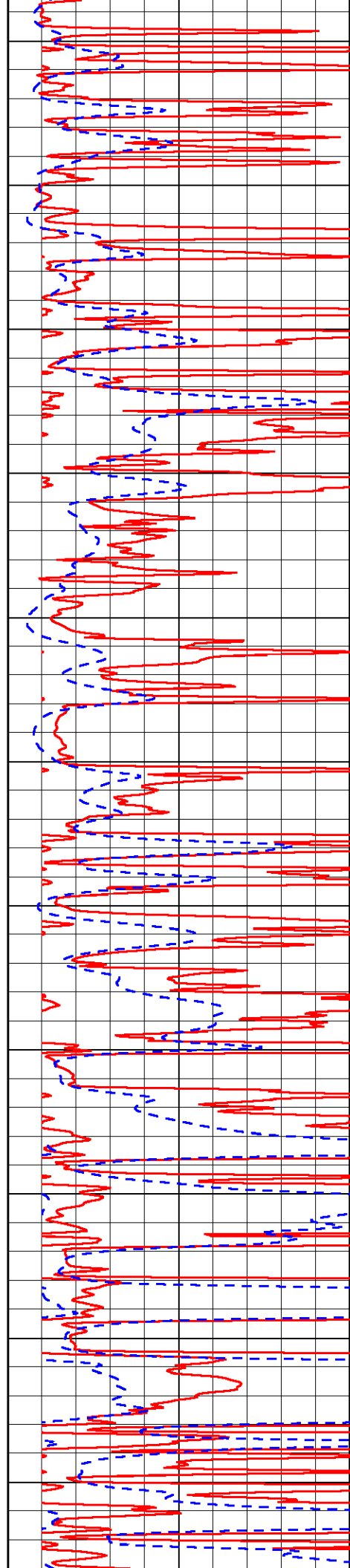
3750

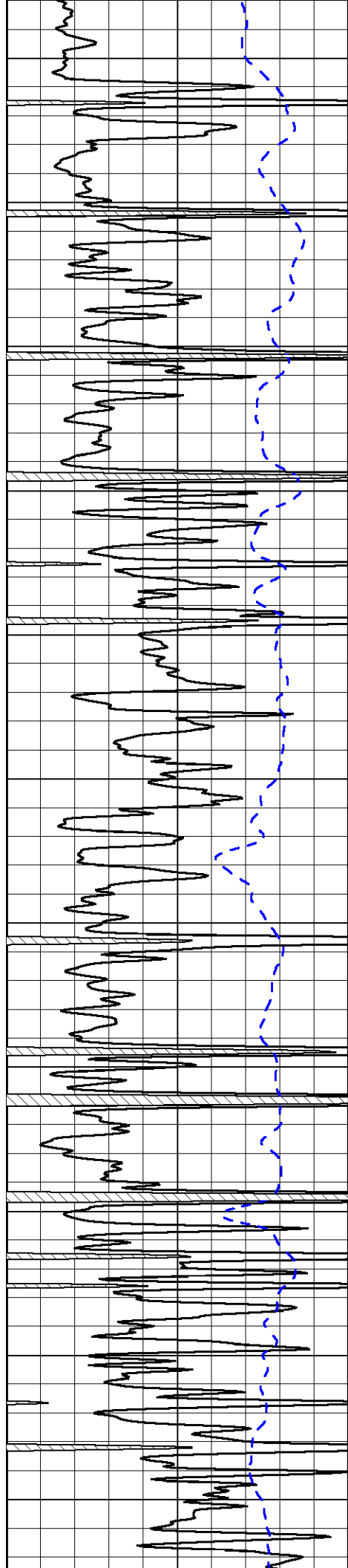
3800

3850

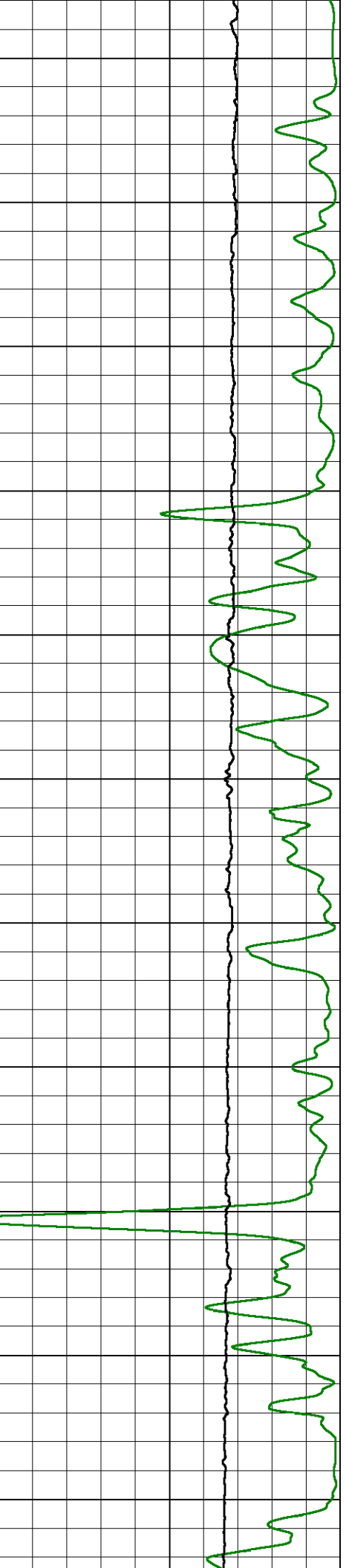
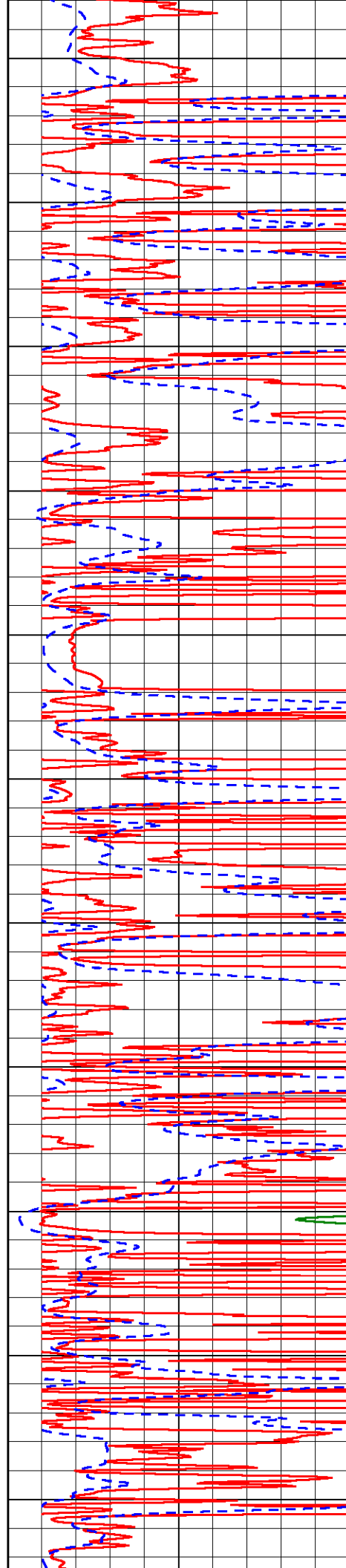
3900

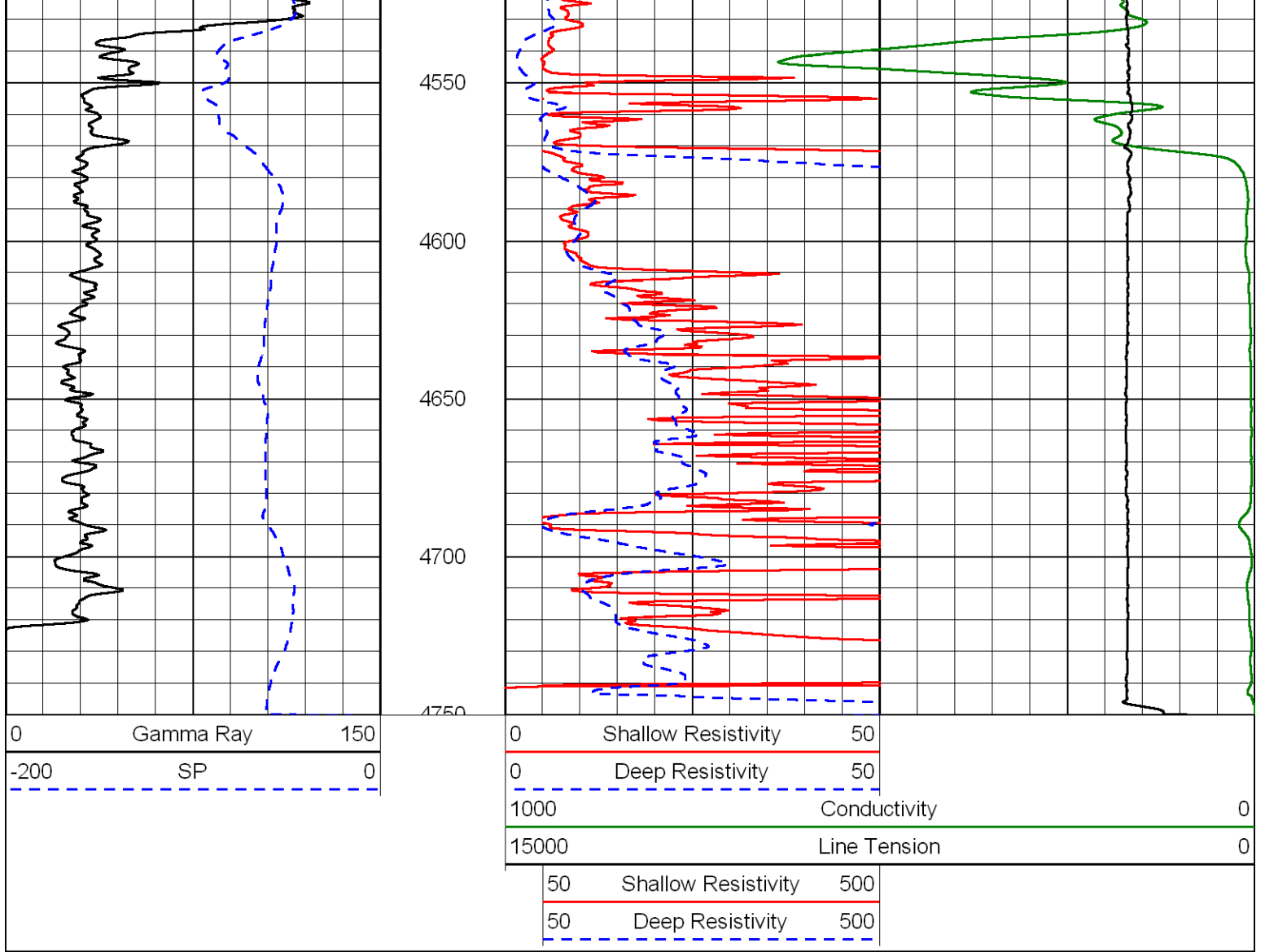
3950



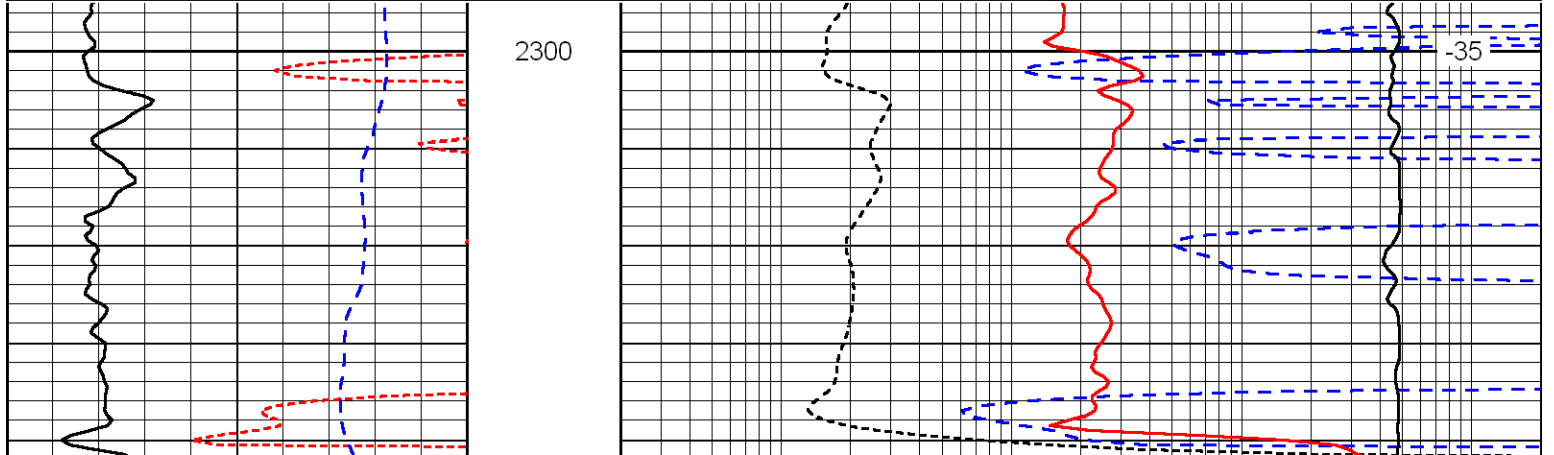
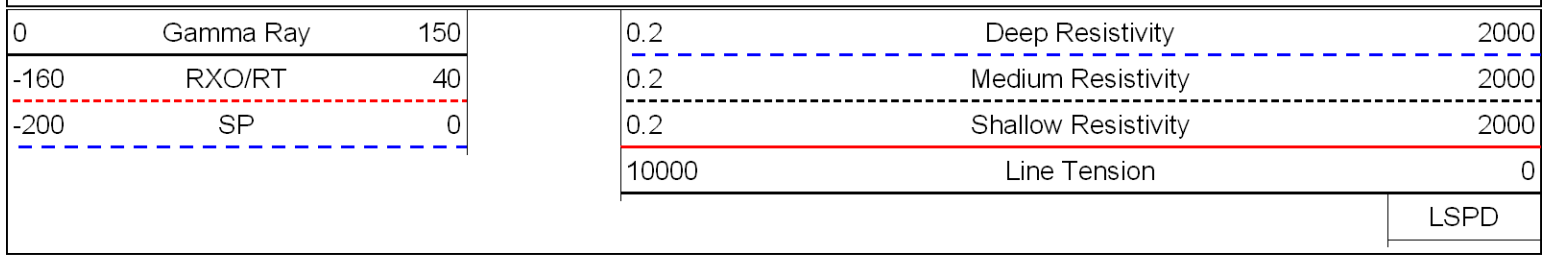


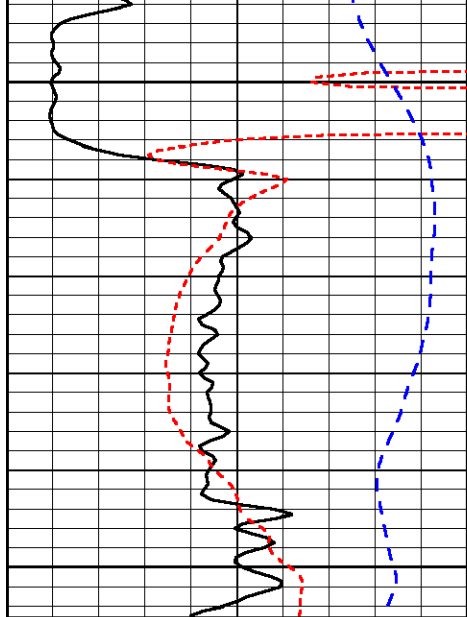
4000  
4050  
4100  
4150  
4200  
4250  
4300  
4350  
4400  
4450  
4500





Database File: newgulfd.db  
 Dataset Pathname: dil/ngmain  
 Presentation Format: dil  
 Dataset Creation: Fri Aug 31 01:16:06 2012  
 Charted by: Depth in Feet scaled 1:240

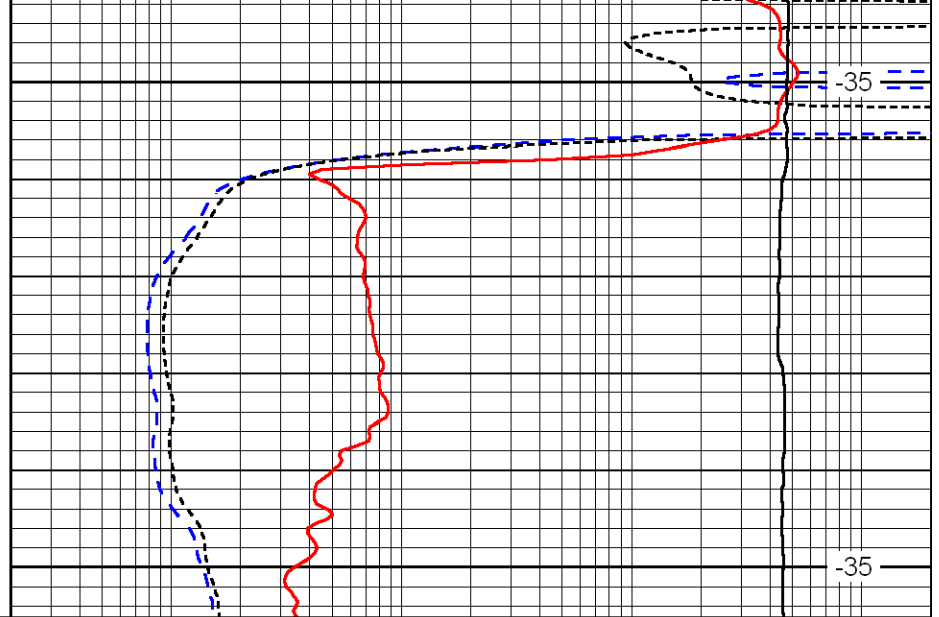




2350

2400

|      |           |     |
|------|-----------|-----|
| 0    | Gamma Ray | 150 |
| -160 | RXO/RT    | 40  |
| -200 | SP        | 0   |



-35

-35

|       |                     |      |
|-------|---------------------|------|
| 0.2   | Deep Resistivity    | 2000 |
| 0.2   | Medium Resistivity  | 2000 |
| 0.2   | Shallow Resistivity | 2000 |
| 10000 | Line Tension        | 0    |

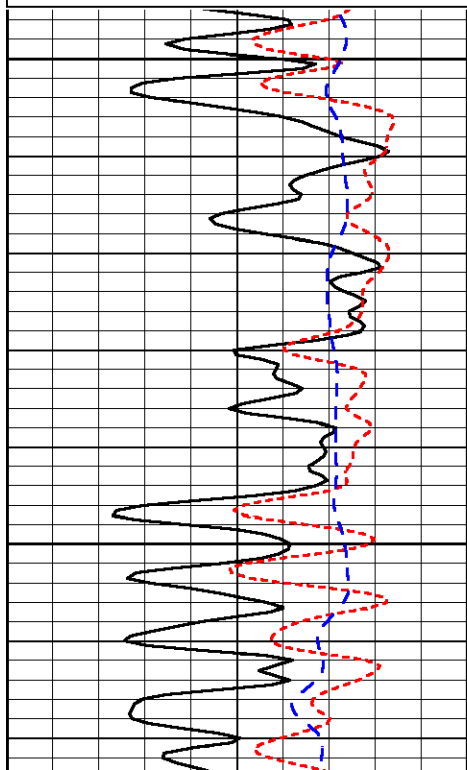
LSPD

Database File: newgulfd.db  
 Dataset Pathname: dil/ngmain  
 Presentation Format: dil  
 Dataset Creation: Fri Aug 31 01:16:06 2012  
 Charted by: Depth in Feet scaled 1:240

|      |           |     |
|------|-----------|-----|
| 0    | Gamma Ray | 150 |
| -160 | RXO/RT    | 40  |
| -200 | SP        | 0   |

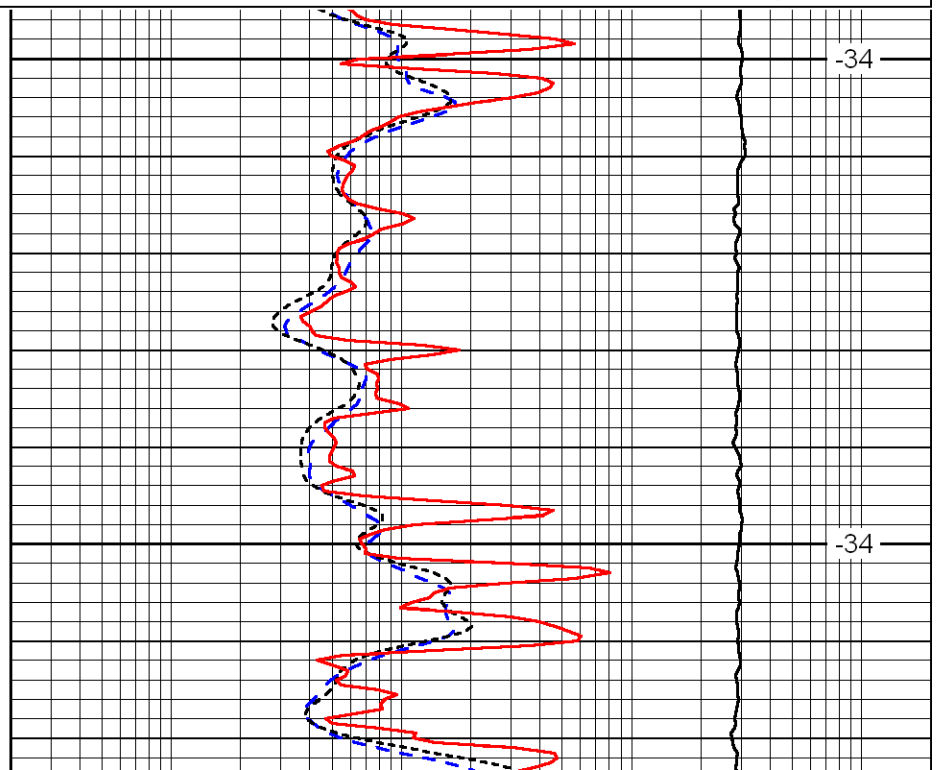
|       |                     |      |
|-------|---------------------|------|
| 0.2   | Deep Resistivity    | 2000 |
| 0.2   | Medium Resistivity  | 2000 |
| 0.2   | Shallow Resistivity | 2000 |
| 10000 | Line Tension        | 0    |

LSPD



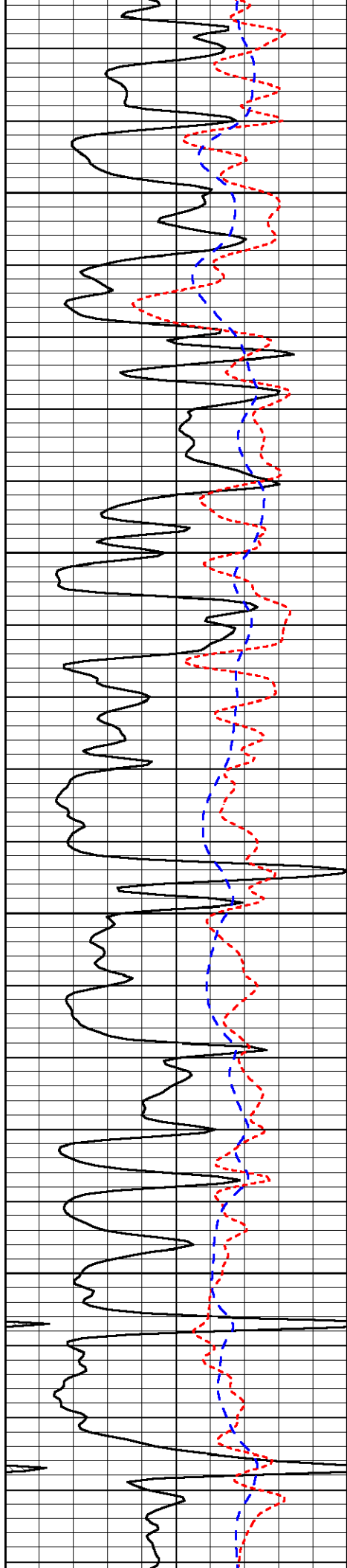
3400

3450



-34

-34

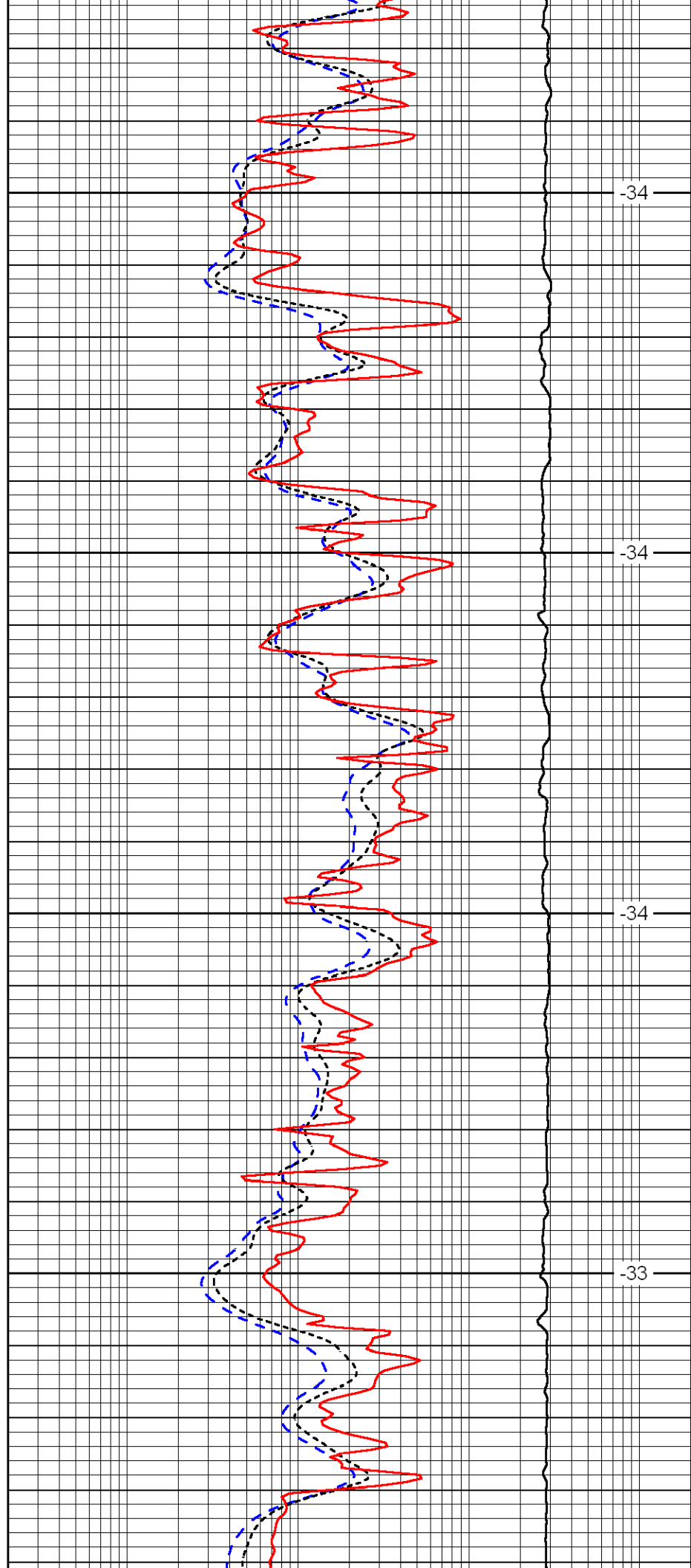


3500

3550

3600

3650

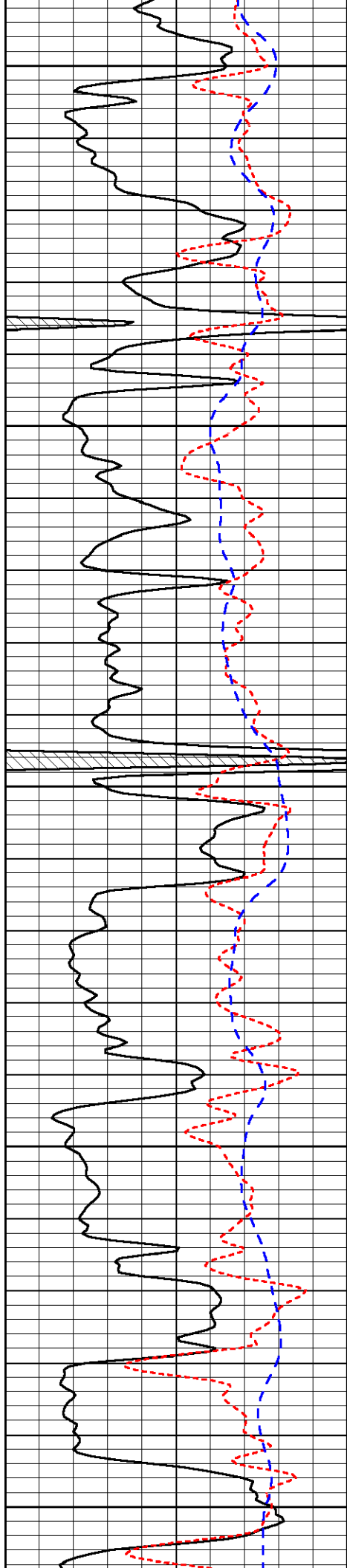


-34

-34

-34

-33



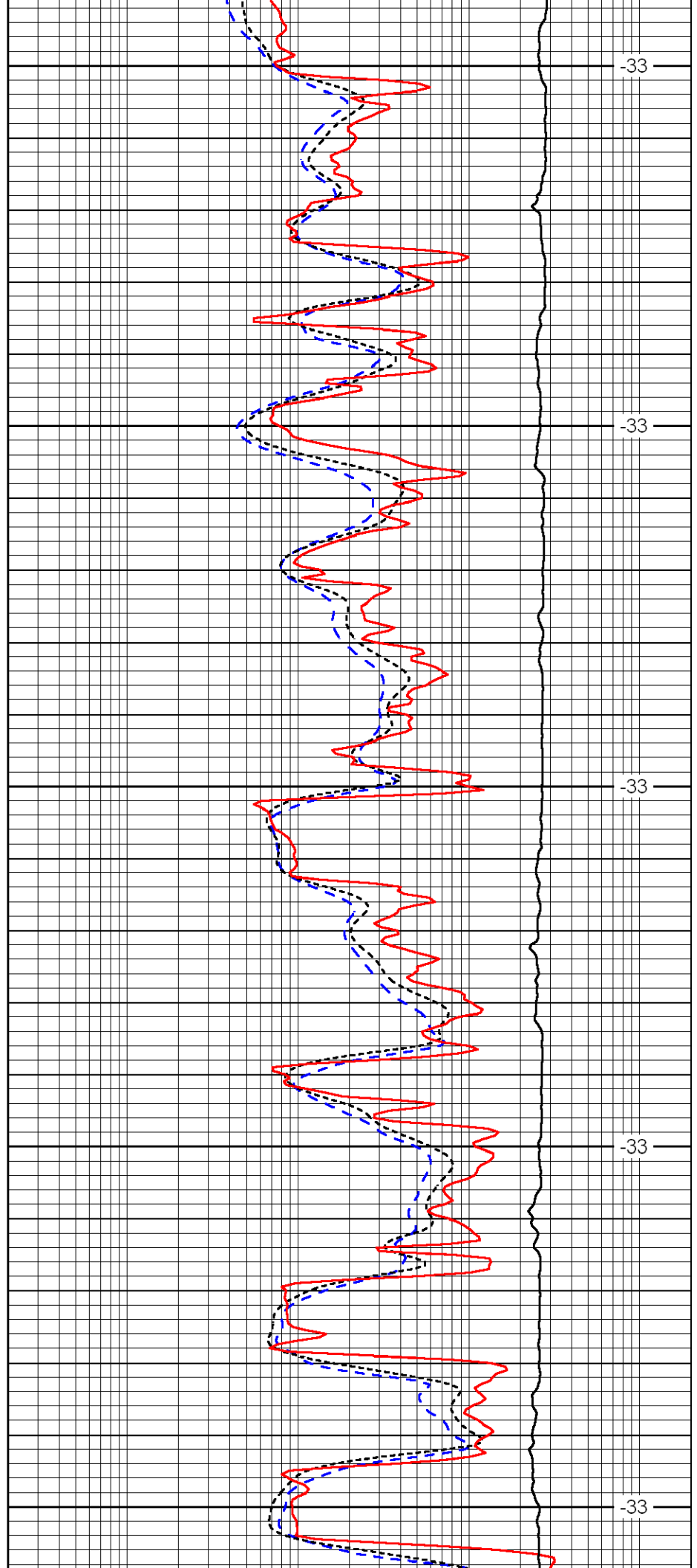
3700

3750

3800

3850

3900



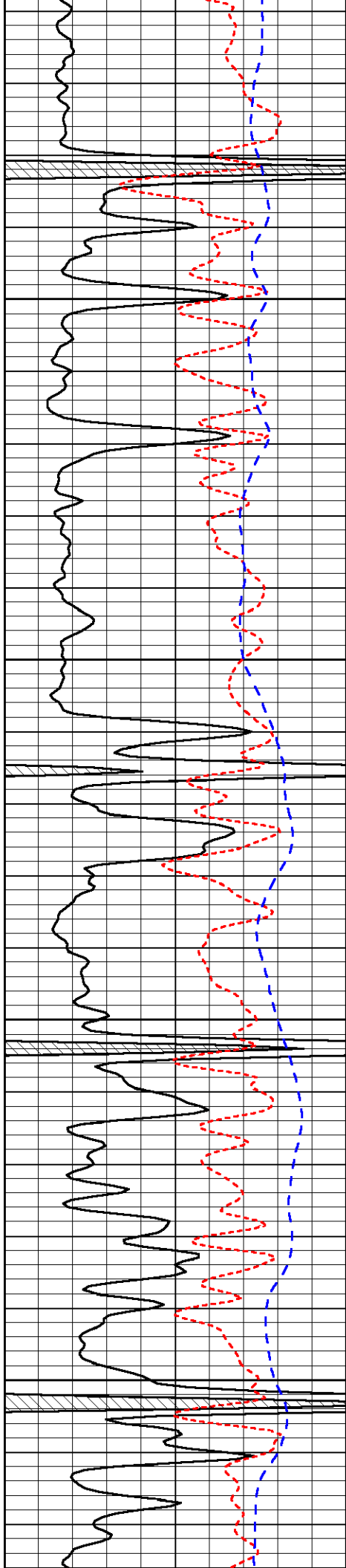
-33

-33

-33

-33

-33

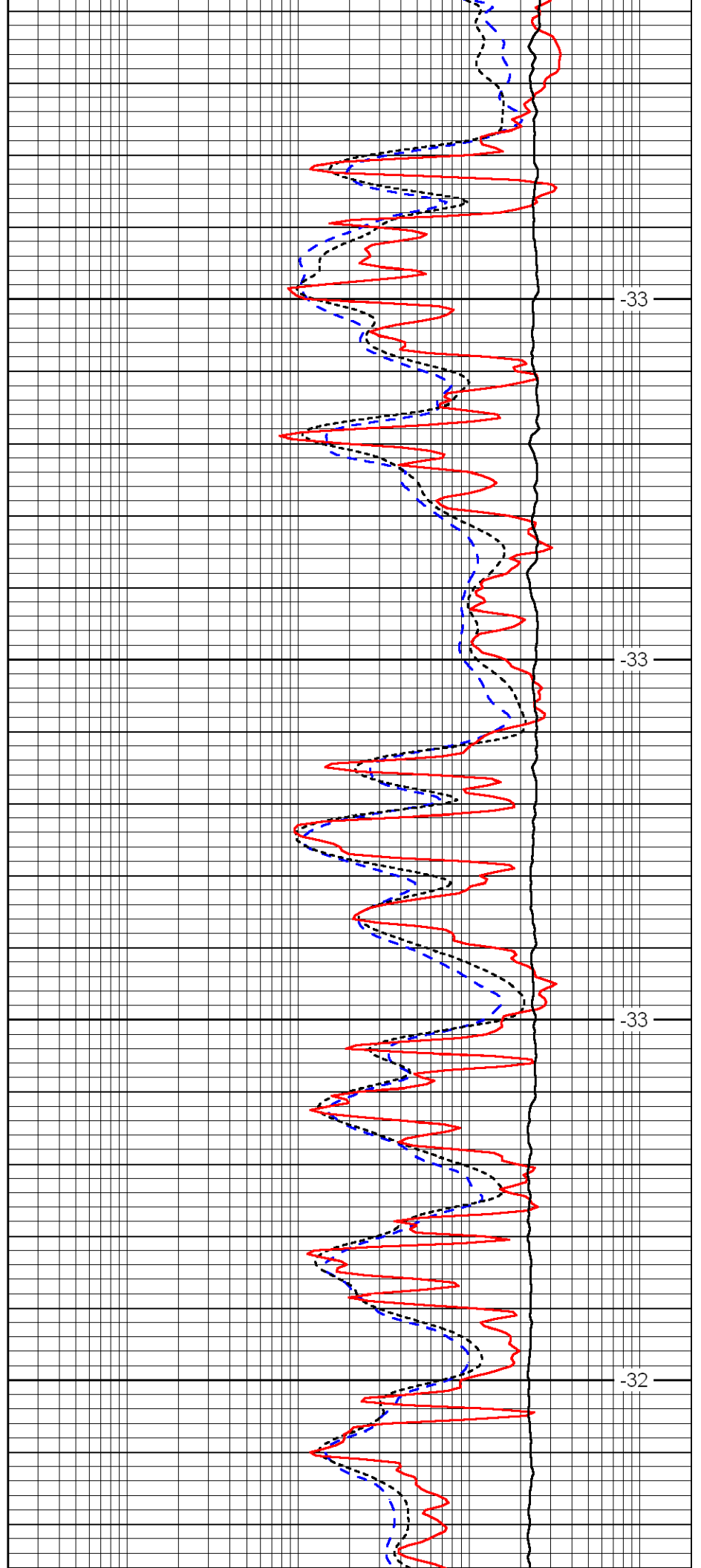


3950

4000

4050

4100

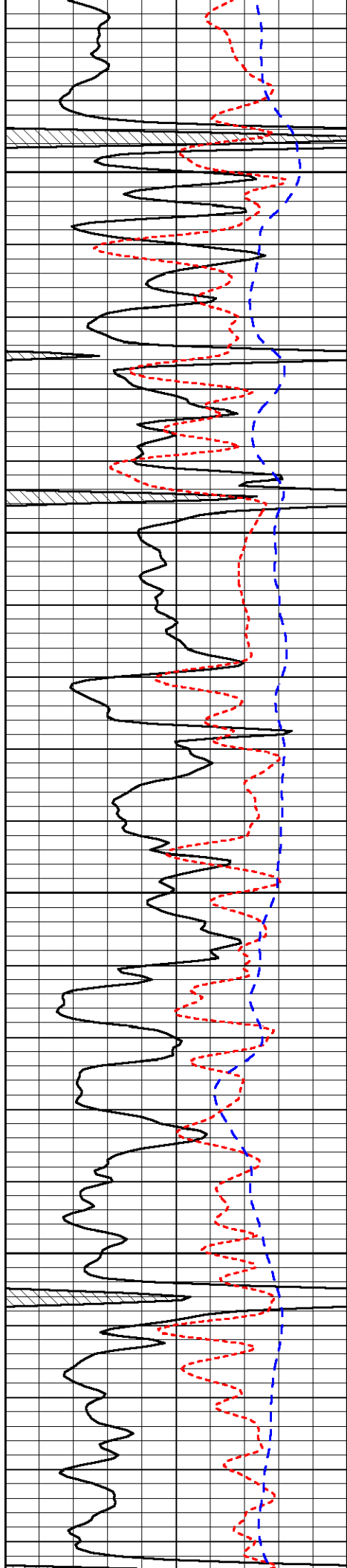


-33

-33

-33

-32

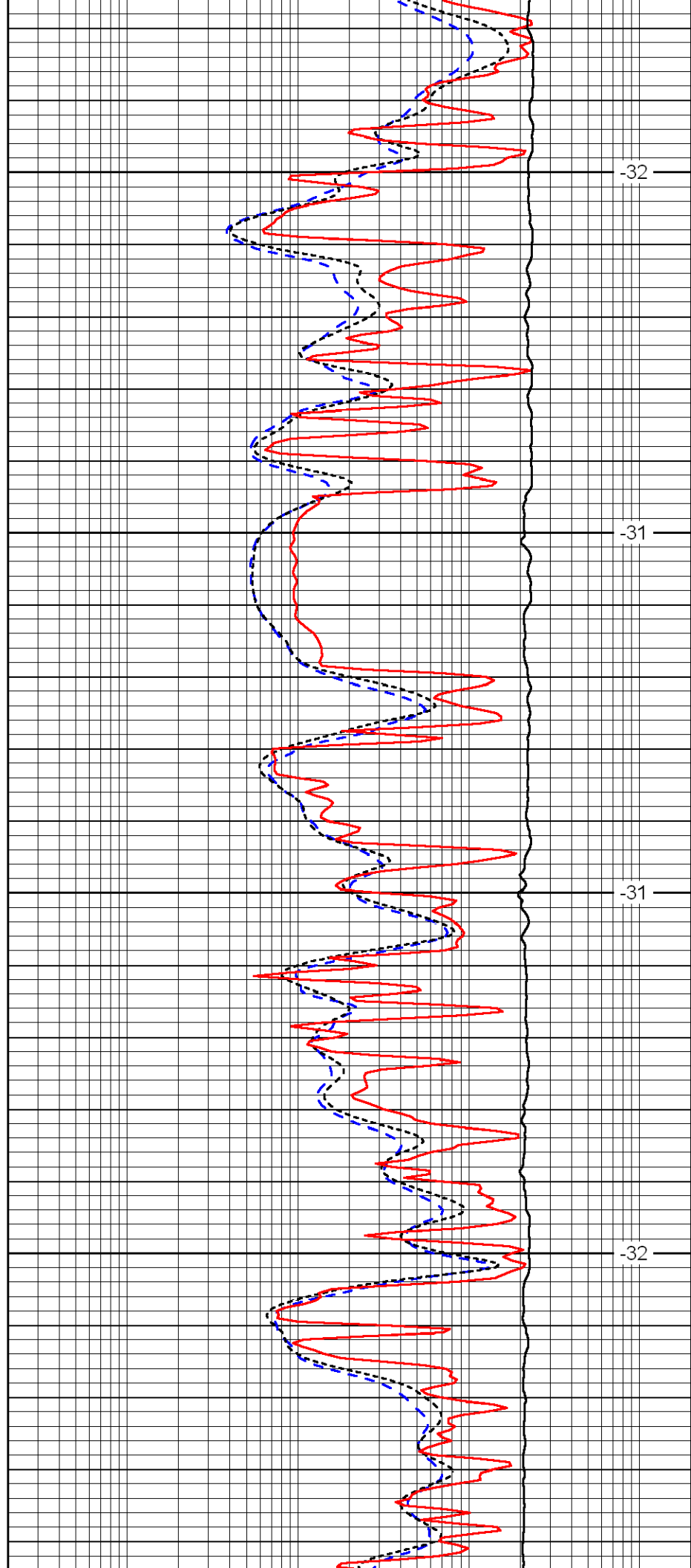


4150

4200

4250

4300

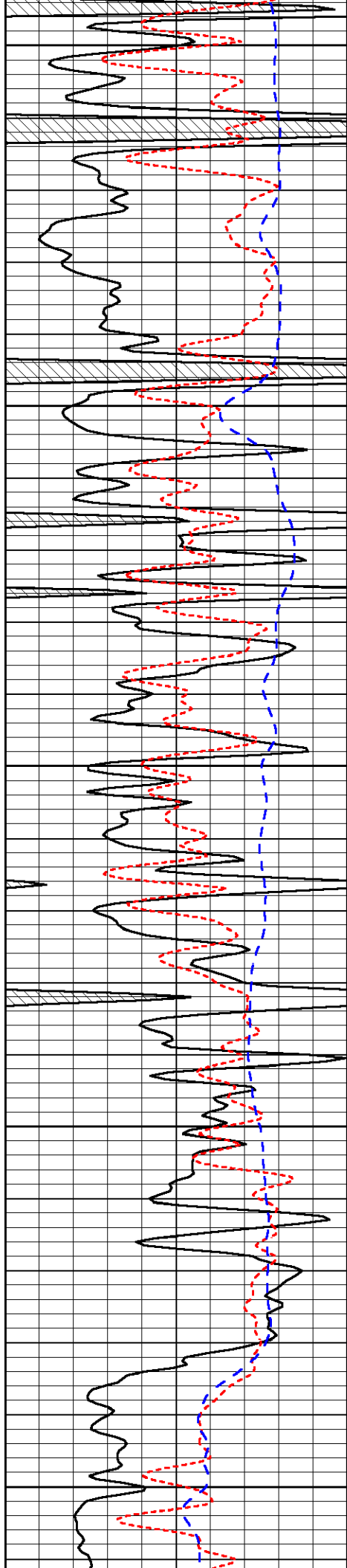


-32

-31

-31

-32



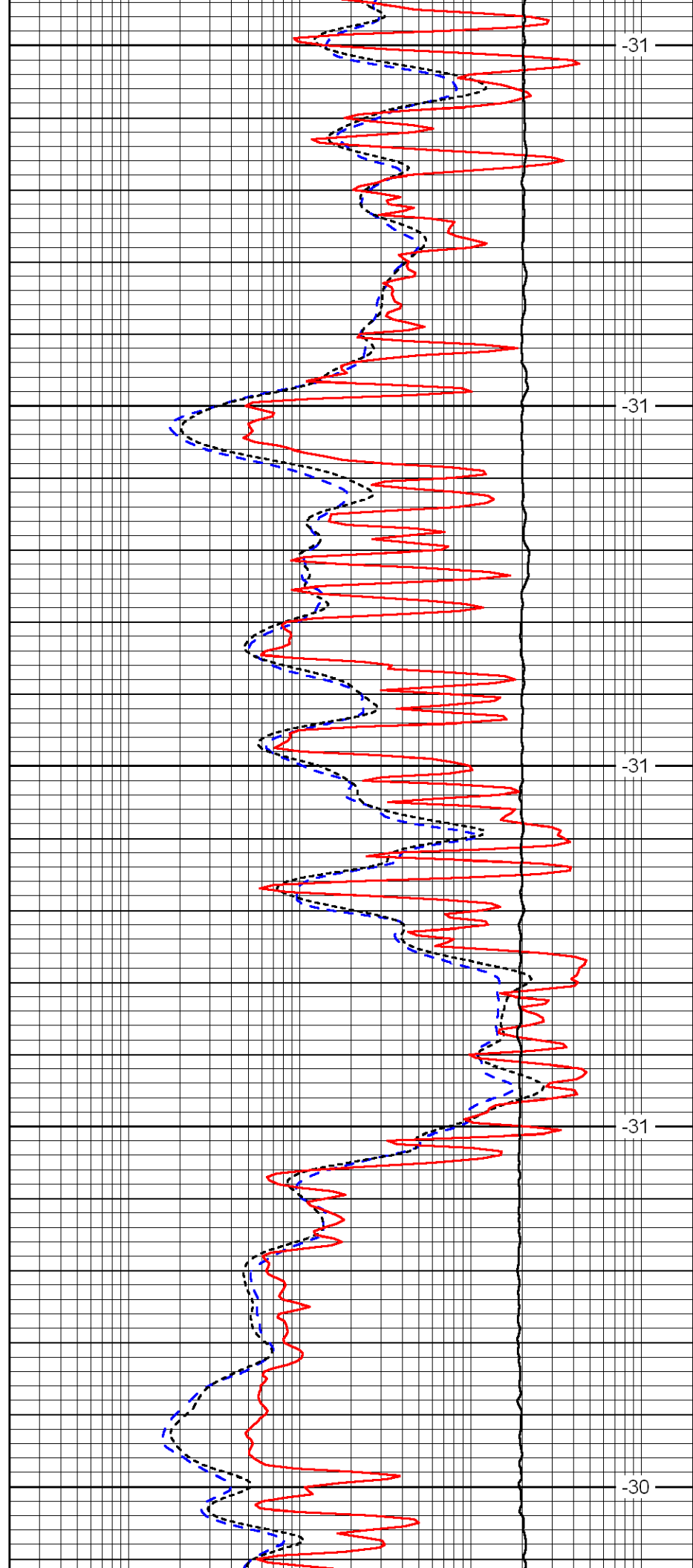
4350

4400

4450

4500

4550



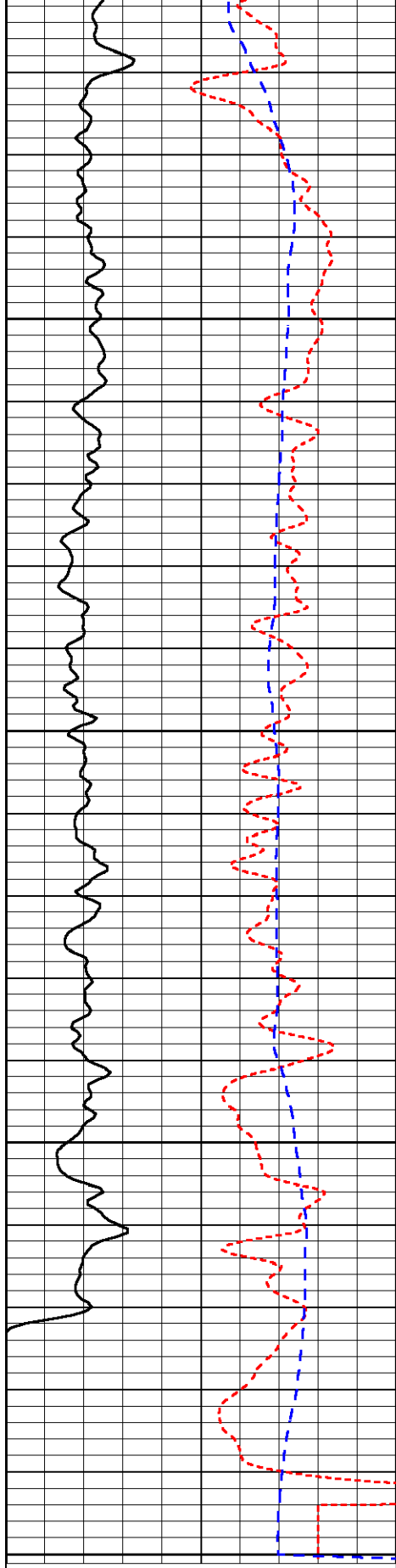
-31

-31

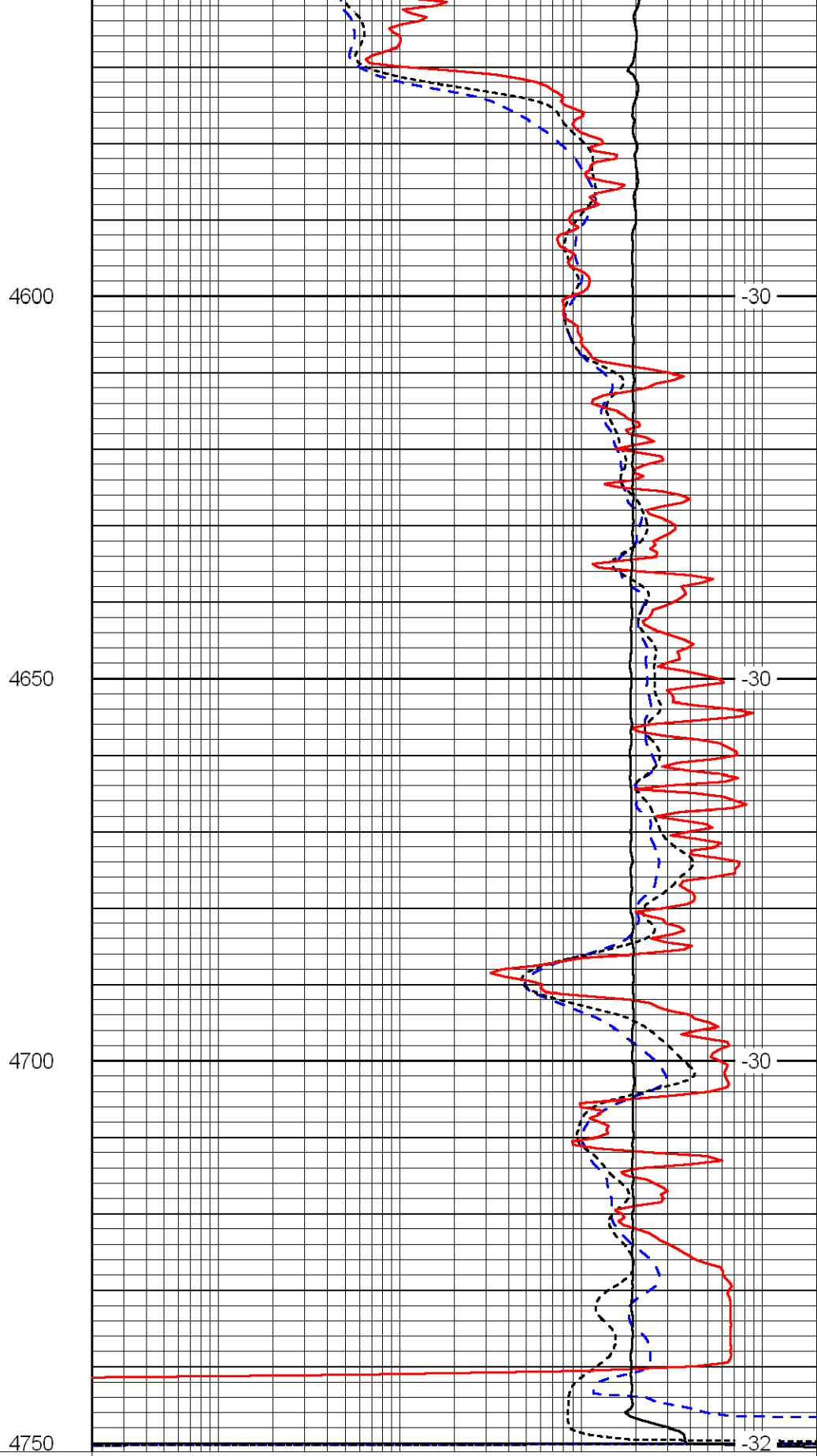
-31

-31

-30



|      |           |     |
|------|-----------|-----|
| 0    | Gamma Ray | 150 |
| -160 | RXO/RT    | 40  |
| -200 | SP        | 0   |



|       |                     |      |
|-------|---------------------|------|
| 0.2   | Deep Resistivity    | 2000 |
| 0.2   | Medium Resistivity  | 2000 |
| 0.2   | Shallow Resistivity | 2000 |
| 10000 | Line Tension        | 0    |

LSPD