



Pioneer Energy Services

Dual Ind. / Neutron-Density
Composite Log

API No.	15-109-21123-00-00	
Company	New Gulf Operating, LLC	
Well	Prairie Dog #1-05	
Field	Wildcat	
County	Logan	State
Location	2970' FSL & 330' FWL	
Sec: 5	Twp: 15S	Rge: 34W
Other Services	None	

Permanent Datum	Ground Level	Elevation 2971
Log Measured From	Kelly Bushing	9 Ft. Above Perm. Datum
Drilling Measured From	Kelly Bushing	
Date	8/30/2012	

Run Number	One
Depth Driller	4740
Depth Logger	4744
Bottom Logged Interval	4743
Top Log Interval	3400
Casing Driller	8.625 @ 263
Casing Logger	263
Bit Size	7.875
Type Fluid in Hole	Chemical
Salinity, ppm CL	7200
Density / Viscosity	9.4 54
pH / Fluid Loss	10.0 8.8
Source of Sample	Flowline
Rm @ Meas. Temp	0.65 @ 80
Rmf @ Meas. Temp	0.49 @ 80
Rmc @ Meas. Temp	0.88 @ 80
Source of Rmf / Rmc	Charts
Rm @ BHT	0.42 @ 123
Operating Rig Time	5 Hours
Max Rec. Temp. F	123
Equipment Number	10
Location	Hays
Recorded By	R. Barnhart
Witnessed By	John Goldsmith

<<< Fold Here >>>

All interpretations are opinions based on inferences from electrical or other measurements and we cannot and do not guarantee the accuracy or correctness of any interpretation, and we shall not, except in the case of gross or willful negligence on our part, be liable or responsible for any loss, costs, damages, or expenses incurred or sustained by anyone resulting from any interpretation made by any of our officers, agents or employees. These interpretations are also subject to our general terms and conditions set out in our current Price Schedule.

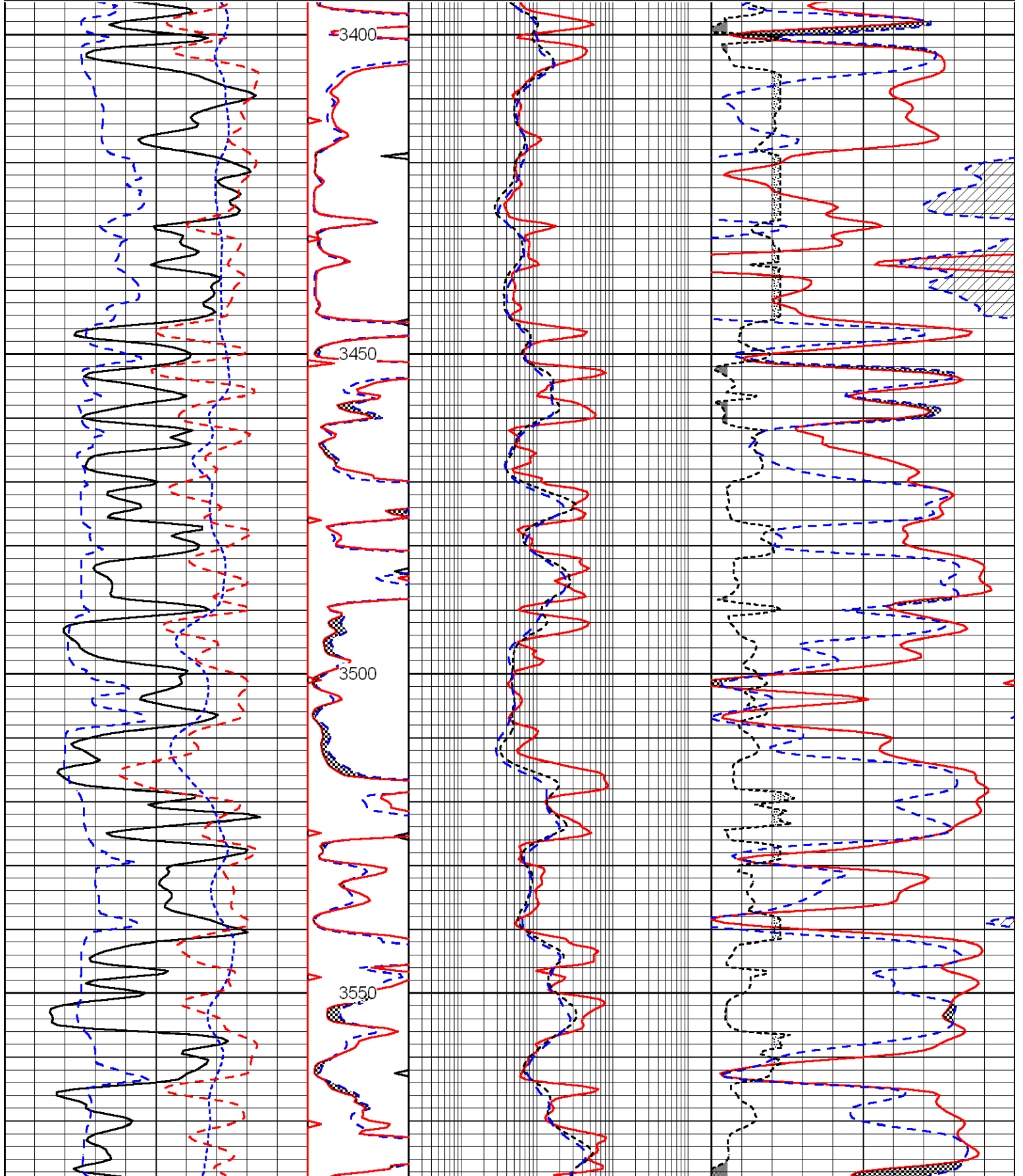
Comments

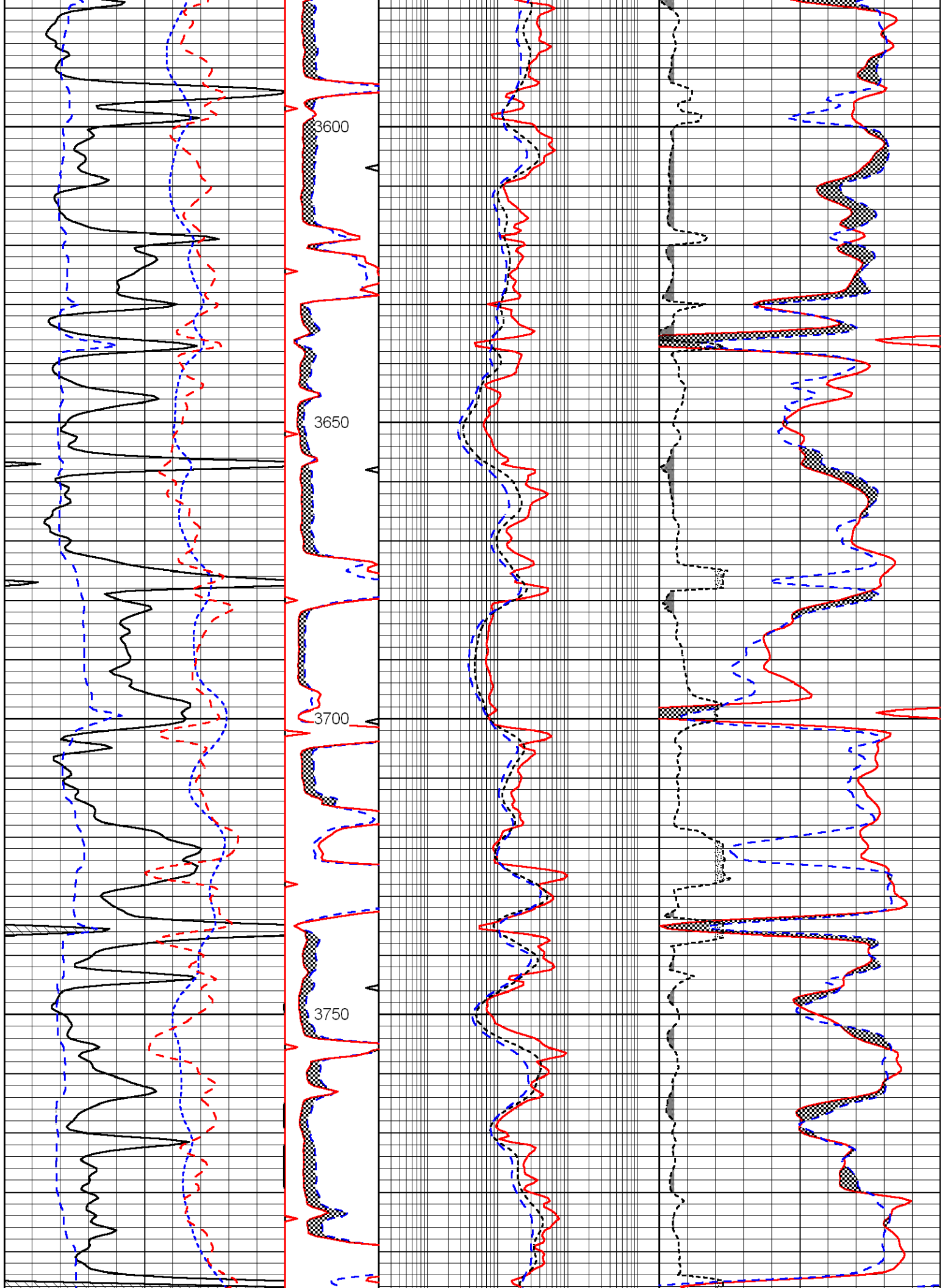
Thank you for using Log-Tech, Inc.
(785) 625-3858

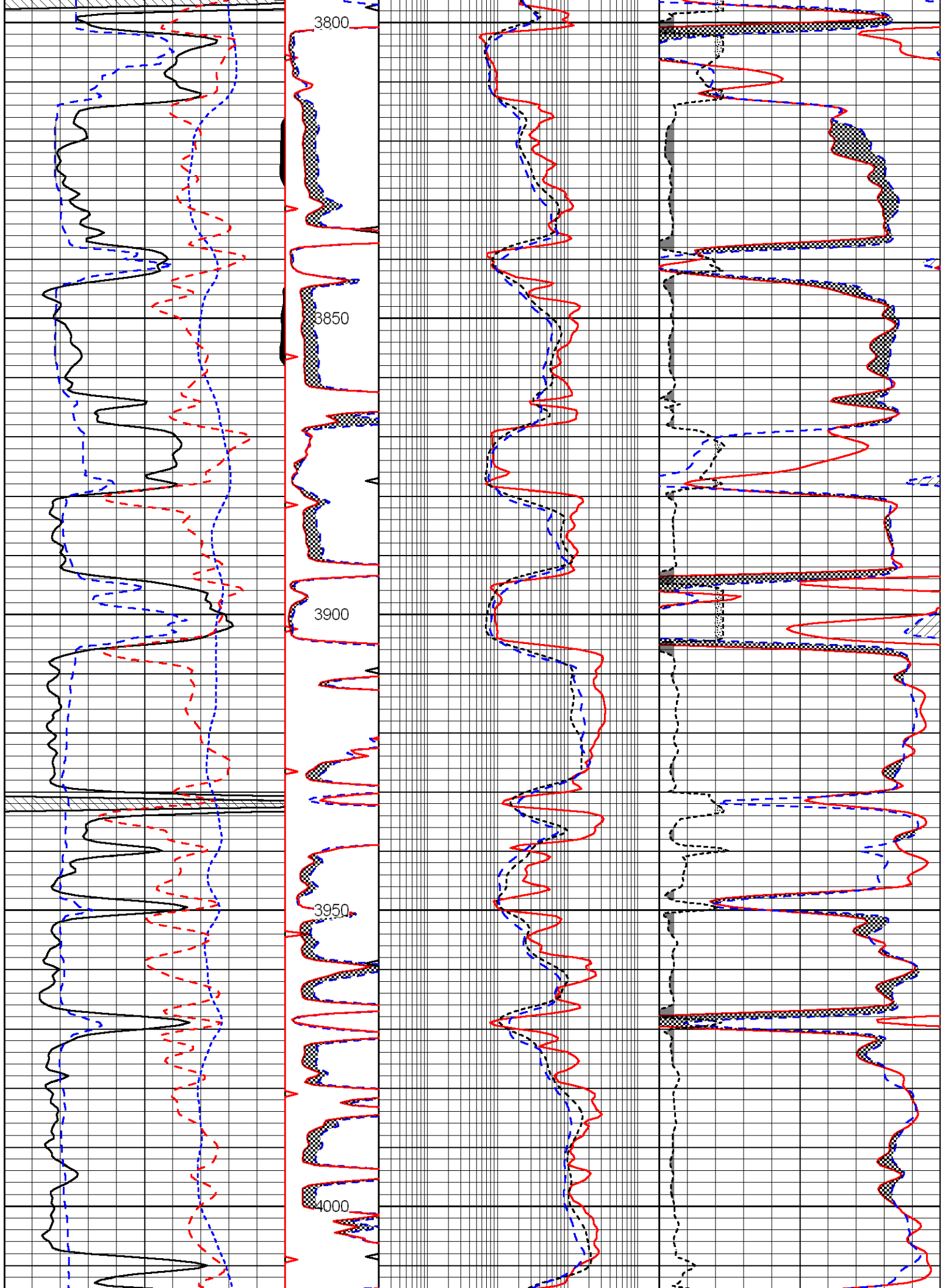
Russell Springs, KS:
1E, 8 1/2S, 2E, S into

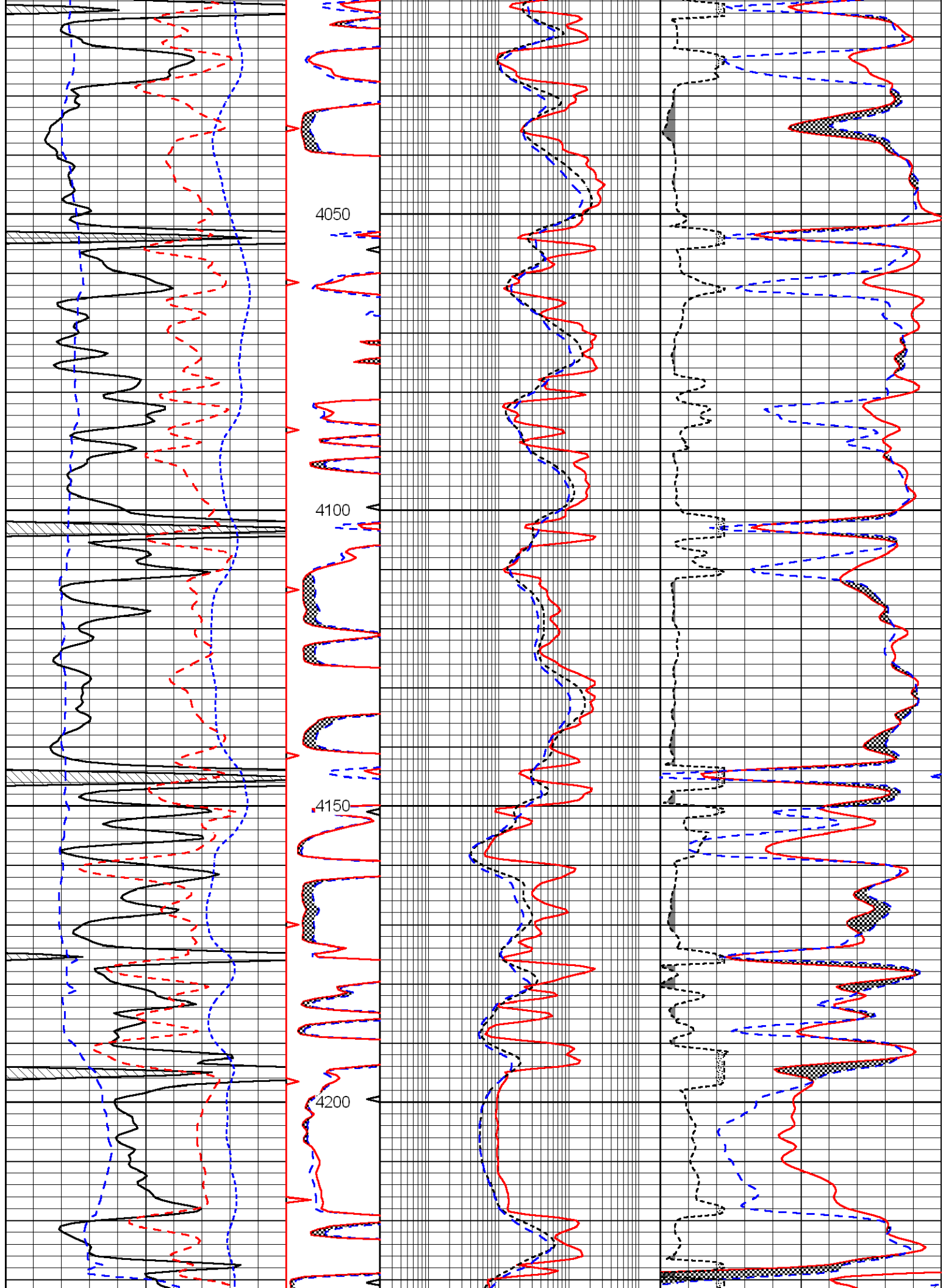
Database File: newgulfhd.db
 Dataset Pathname: dil/ngmain
 Presentation Format: jamex
 Dataset Creation: Fri Aug 31 01:16:06 2012
 Charted by: Depth in Feet scaled 1:240

0	Gamma Ray	150	0	MN	20	0.2	Shallow Guard	0	2000	30	Density Porosity	0
150	GR	300	0	MI	20	0.2	Medium Induction	0	2000	30	Neutron Porosity	0
6	Caliper (GAPI)	16				0.2	Deep Induction	0	2000	2.65	dga	3.75
2.875	DCAL (GAPI)	7.875										
-200	SP	0										
-160	Rxo/Rt	40										









4050

4100

4150

4200

