



Pioneer Energy Services

## Dual Compensated Porosity Log

API No. 15-109-21123-00-00

Company: **New Gulf Operating, LLC**  
 Well: **Prairie Dog #1-05**  
 Field: **Wildcat**  
 County: **Logan** State: **Kansas**

Location: **2970' FSL & 330' FWL**

Sec: **5** Twp: **15S** Rge: **34W**

Other Services: **DIL/MEL**

Permanent Datum: **Ground Level** Elevation: **2971**  
 Log Measured From: **Kelly Bushing** 9 Ft. Above Perm. Datum  
 Drilling Measured From: **Kelly Bushing**

K.B. 2980  
 D.F. 2971  
 G.L. 2971

Date	8/30/2012
Run Number	One
Type Log	CNL / CDL
Depth Driller	4740
Depth Logger	4744
Bottom Logged Interval	4723
Top Logged Interval	3400
Type Fluid In Hole	Chemical
Salinity, PPM CL	7200
Density	9.4
Level	Full
Max. Rec. Temp. F	123
Operating Rig Time	5 Hours
Equipment -- Location	17 Hays
Recorded By	R. Barnhart
Witnessed By	John Goldsmith

Borehole Record		Casing Record				
Run No	Bit From	To	Size	Wgt. 23#	From	To
One	12.25	00	263	8.625	00	263
Two	7.875	263	TD			

<<< Fold Here >>>

All interpretations are opinions based on inferences from electrical or other measurements and we cannot and do not guarantee the accuracy or correctness of any interpretation, and we shall not, except in the case of gross or willful negligence on our part, be liable or responsible for any loss, costs, damages, or expenses incurred or sustained by anyone resulting from any interpretation made by any of our officers, agents or employees. These interpretations are also subject to our general terms and conditions set out in our current Price Schedule.

Comments

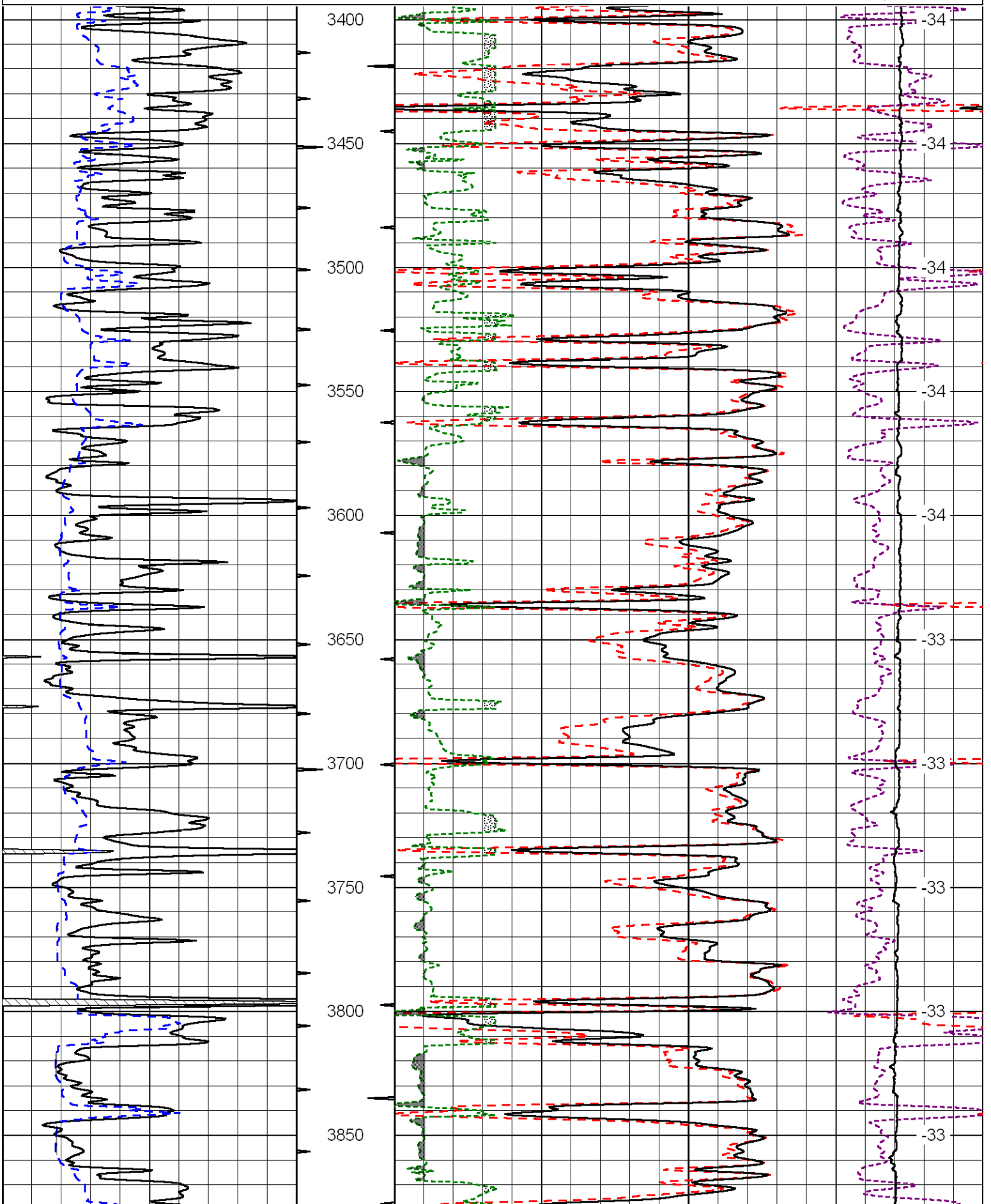
Thank you for using Log-Tech, Inc.  
 (785) 625-3858

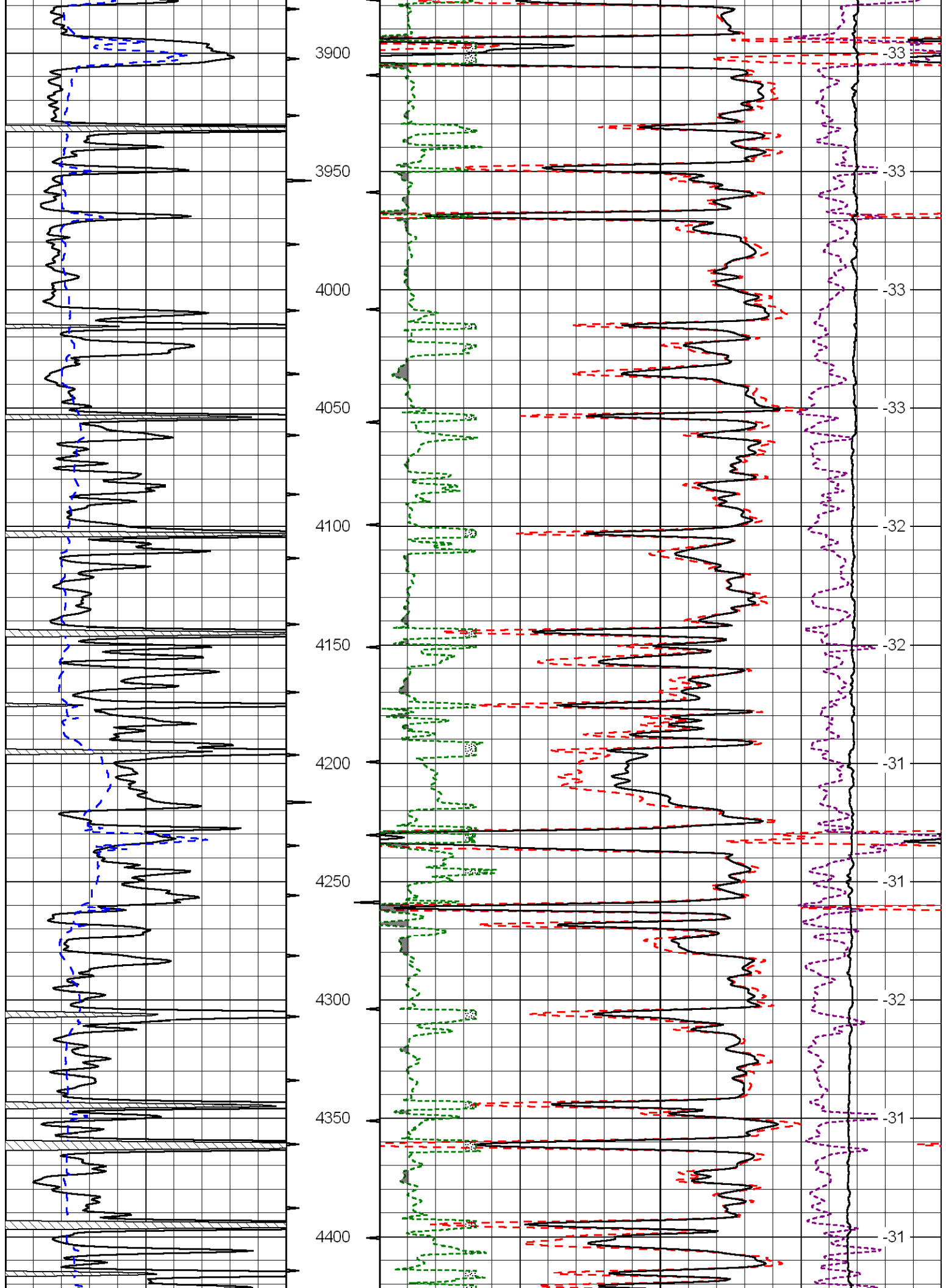
Russell Springs, KS:  
 1E, 8 1/2S, 2E, S into

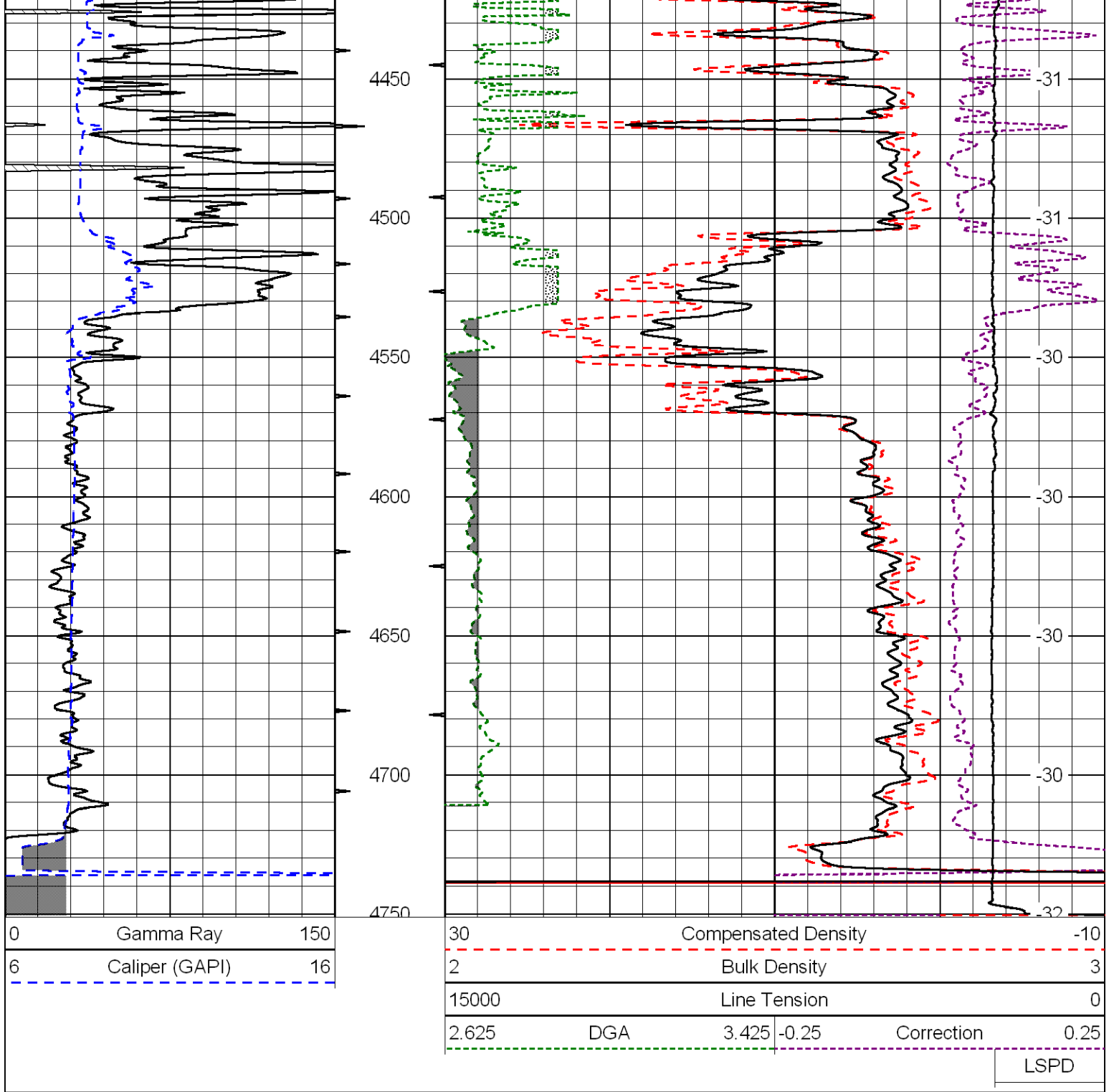
Database File: newgulfhd.db  
 Dataset Pathname: dil/ngmain  
 Presentation Format: cdl  
 Dataset Creation: Fri Aug 31 01:16:06 2012  
 Charted by: Depth in Feet scaled 1:600

0	Gamma Ray	150
6	Caliper (GAPI)	16

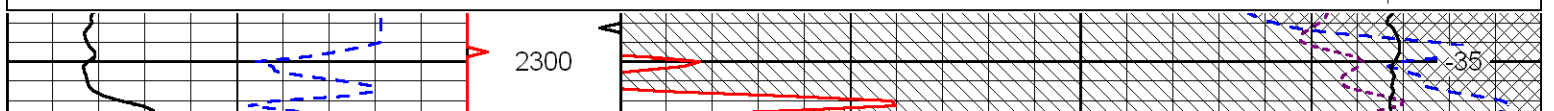
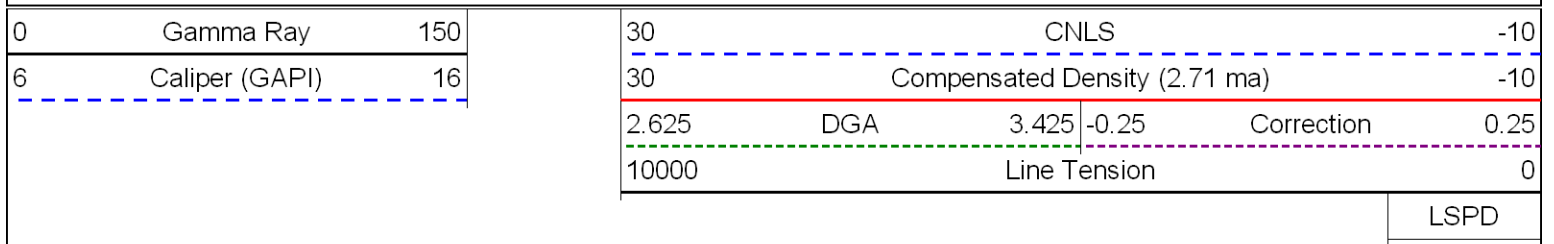
30	Compensated Density		-10
2	Bulk Density		3
15000	Line Tension		0
2.625	DGA	3.425	-0.25
Correction			0.25
LSPD			

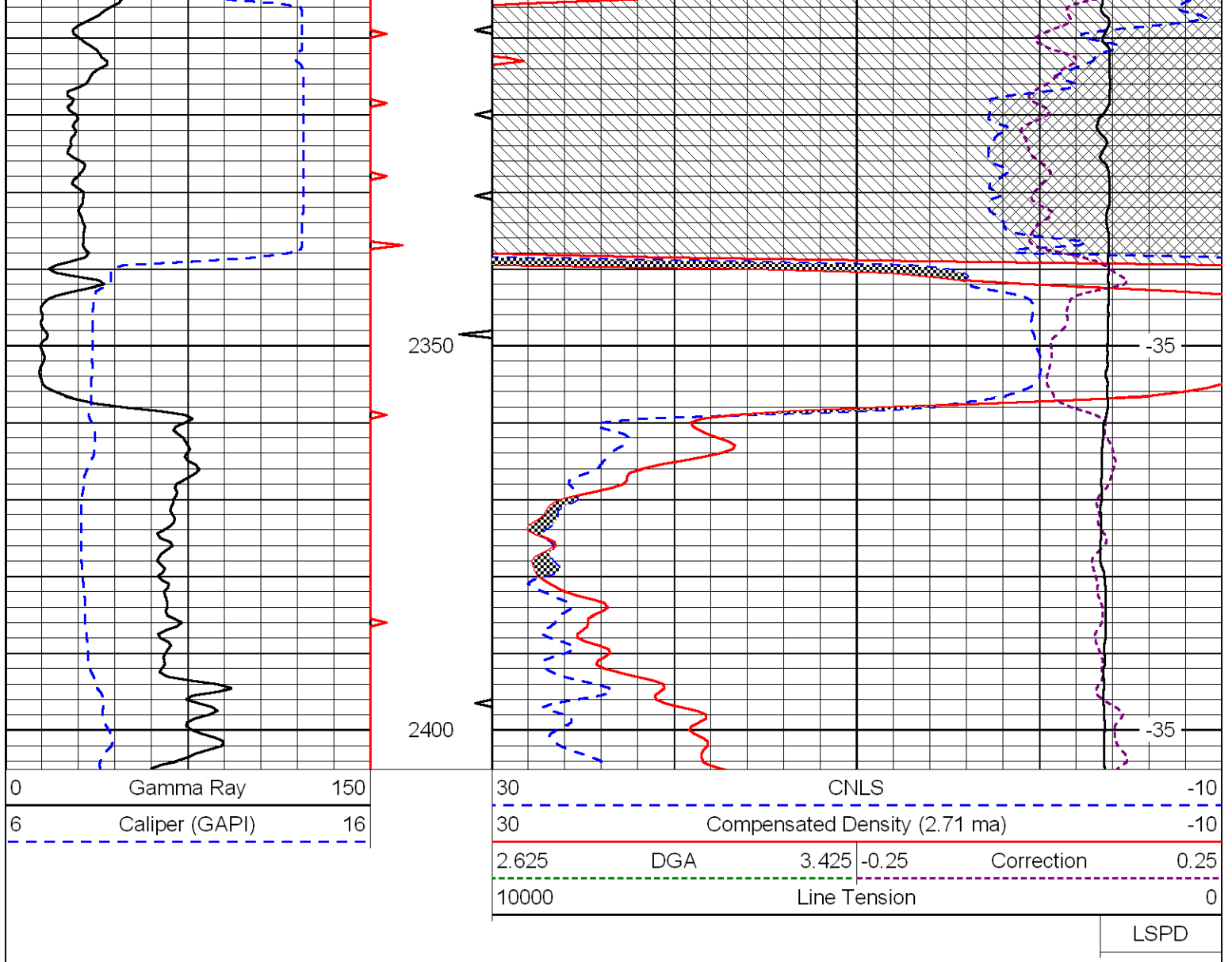




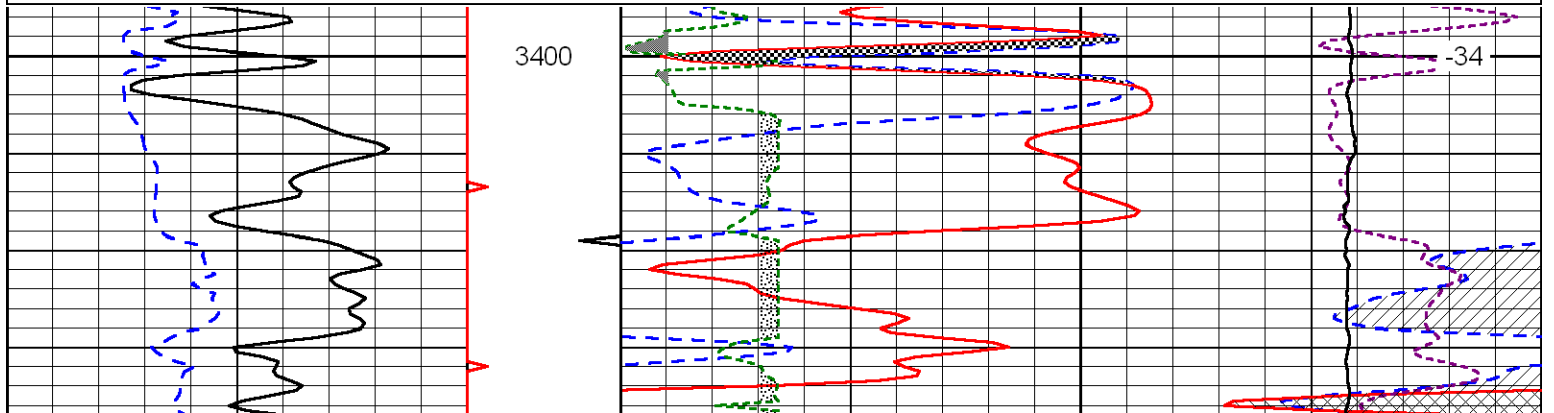
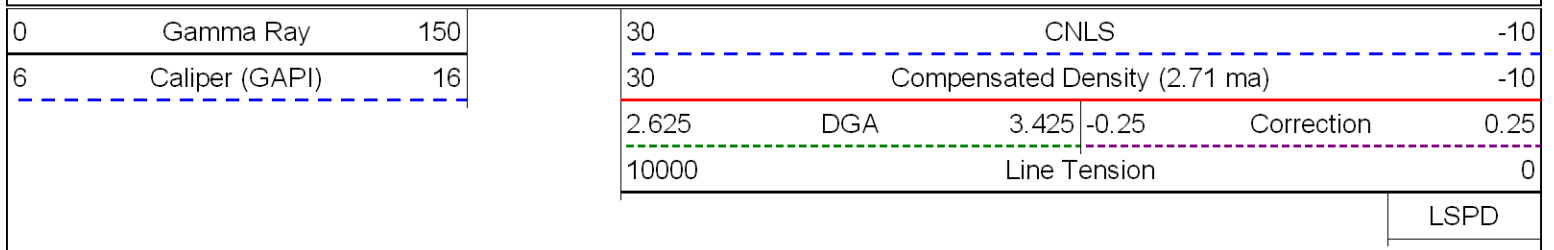


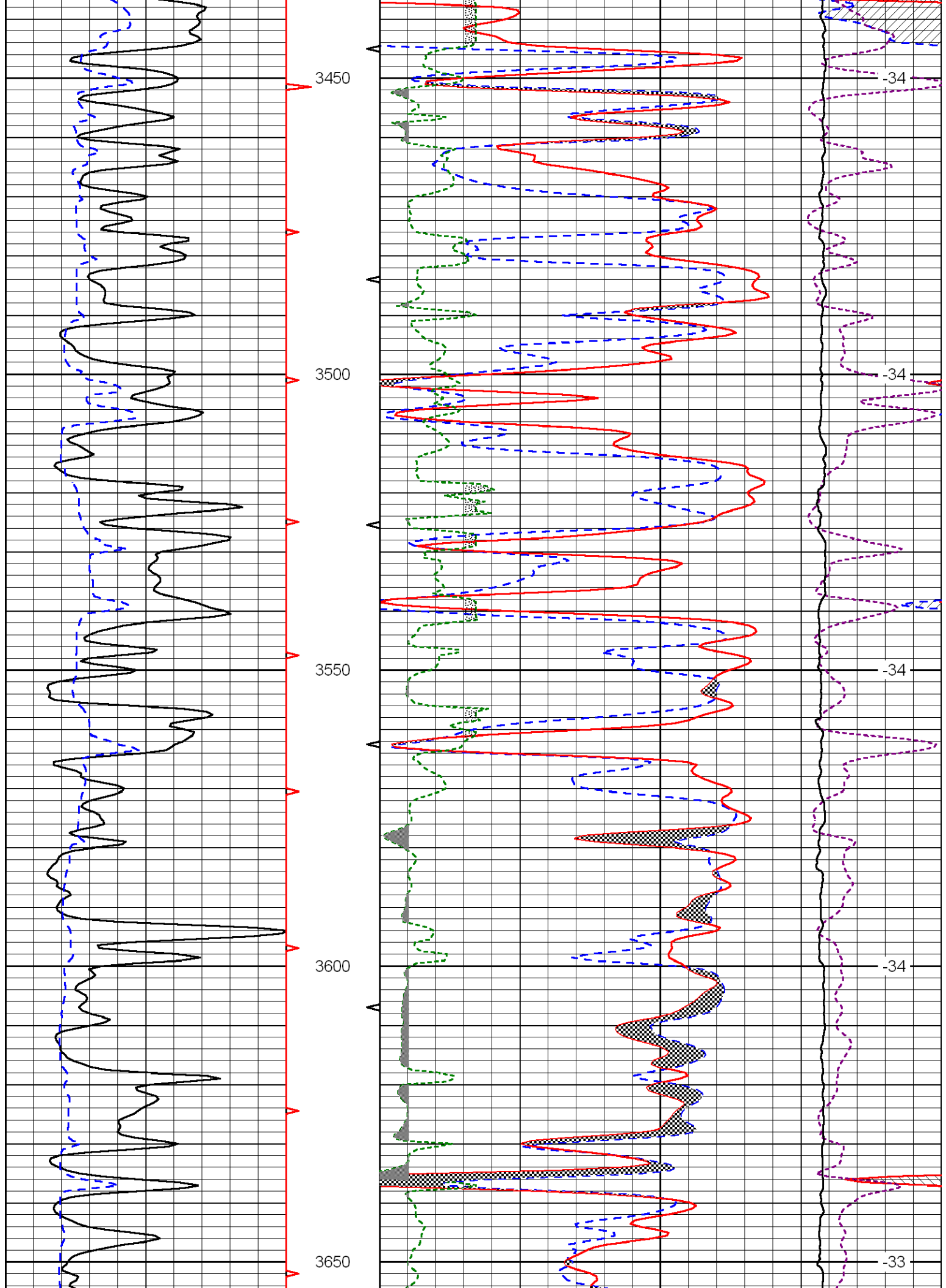
Database File: newgulfd.db  
 Dataset Pathname: dil/ngmain  
 Presentation Format: cndlspec  
 Dataset Creation: Fri Aug 31 01:16:06 2012  
 Charted by: Depth in Feet scaled 1:240

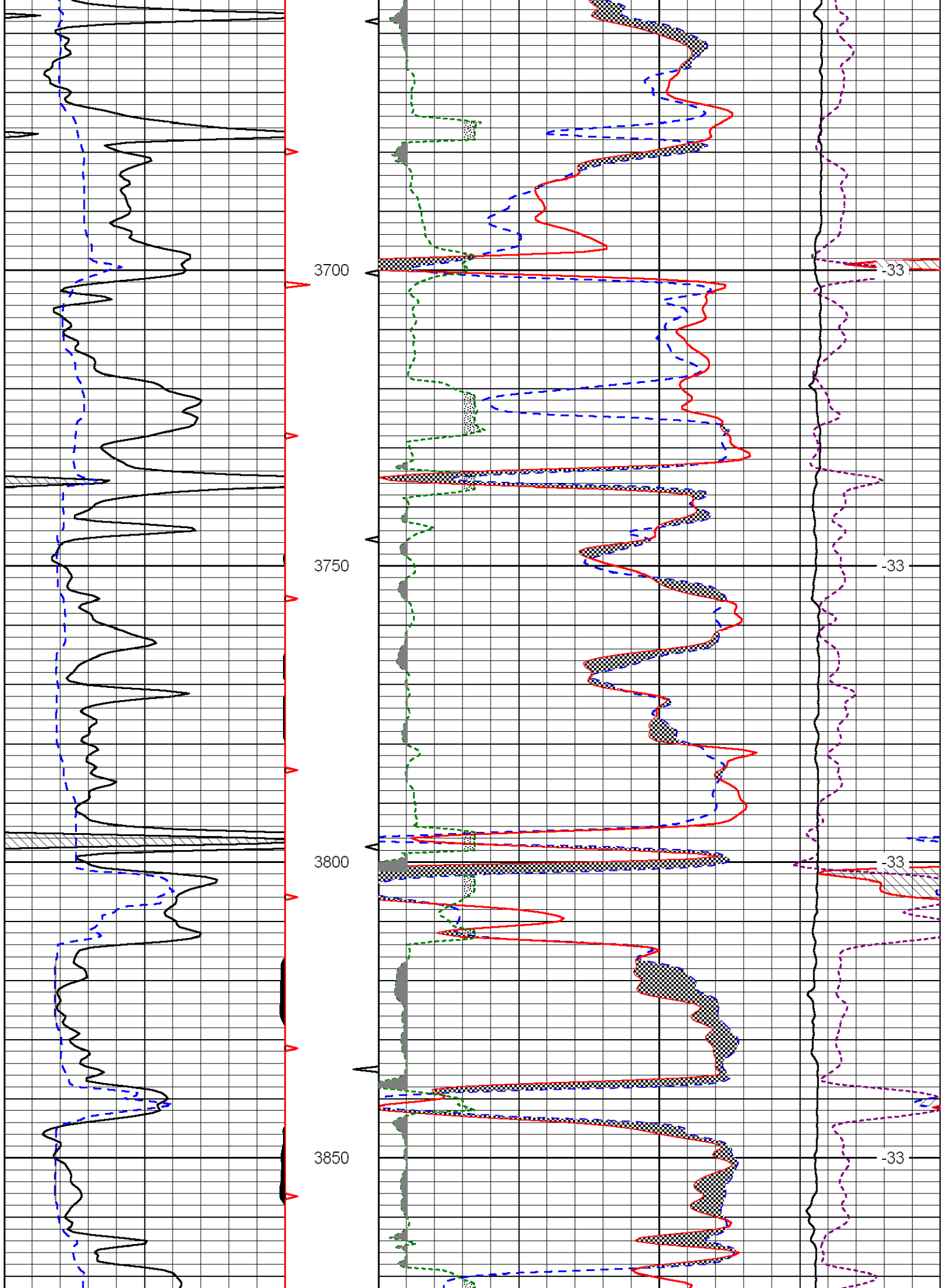


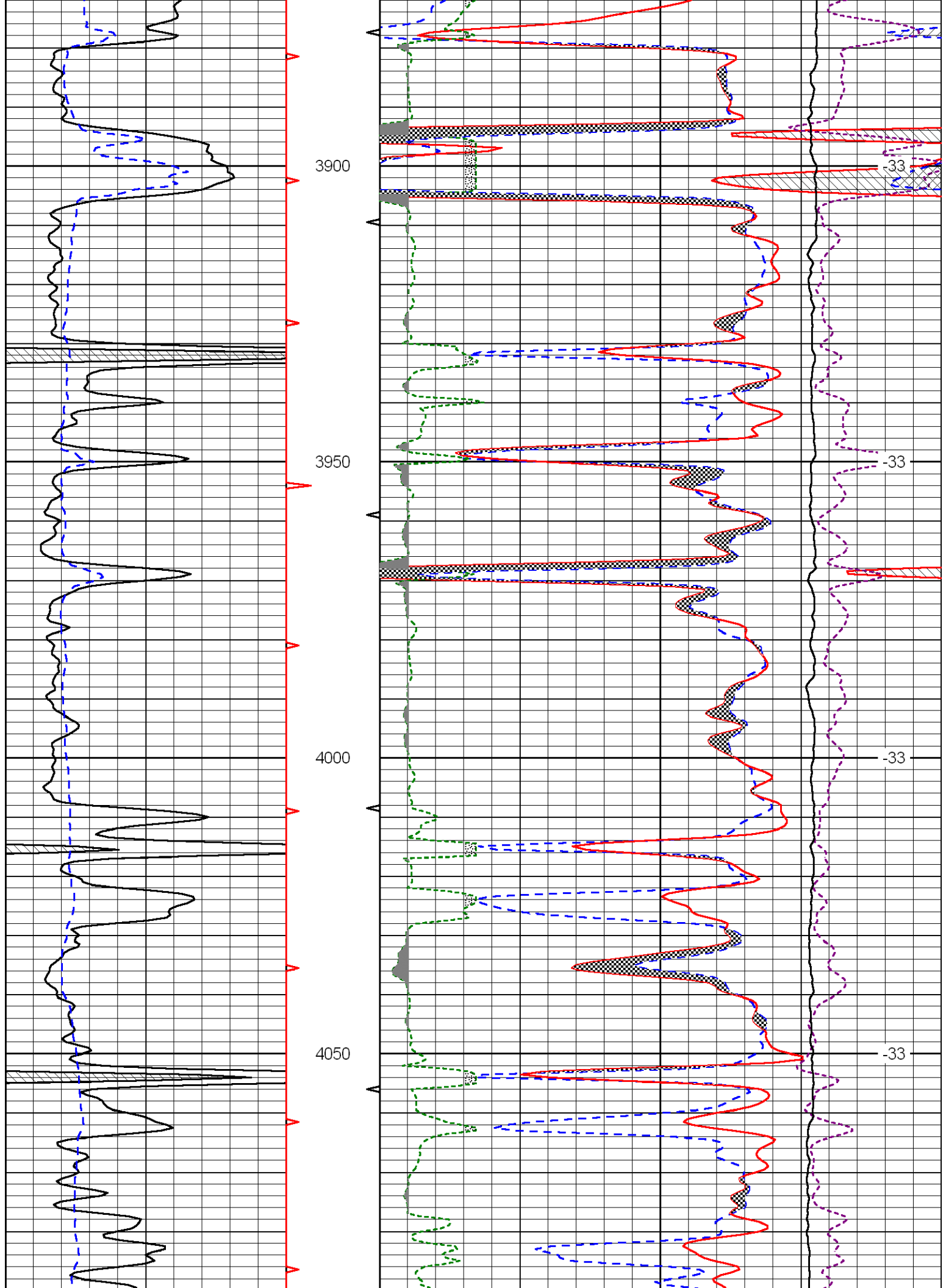


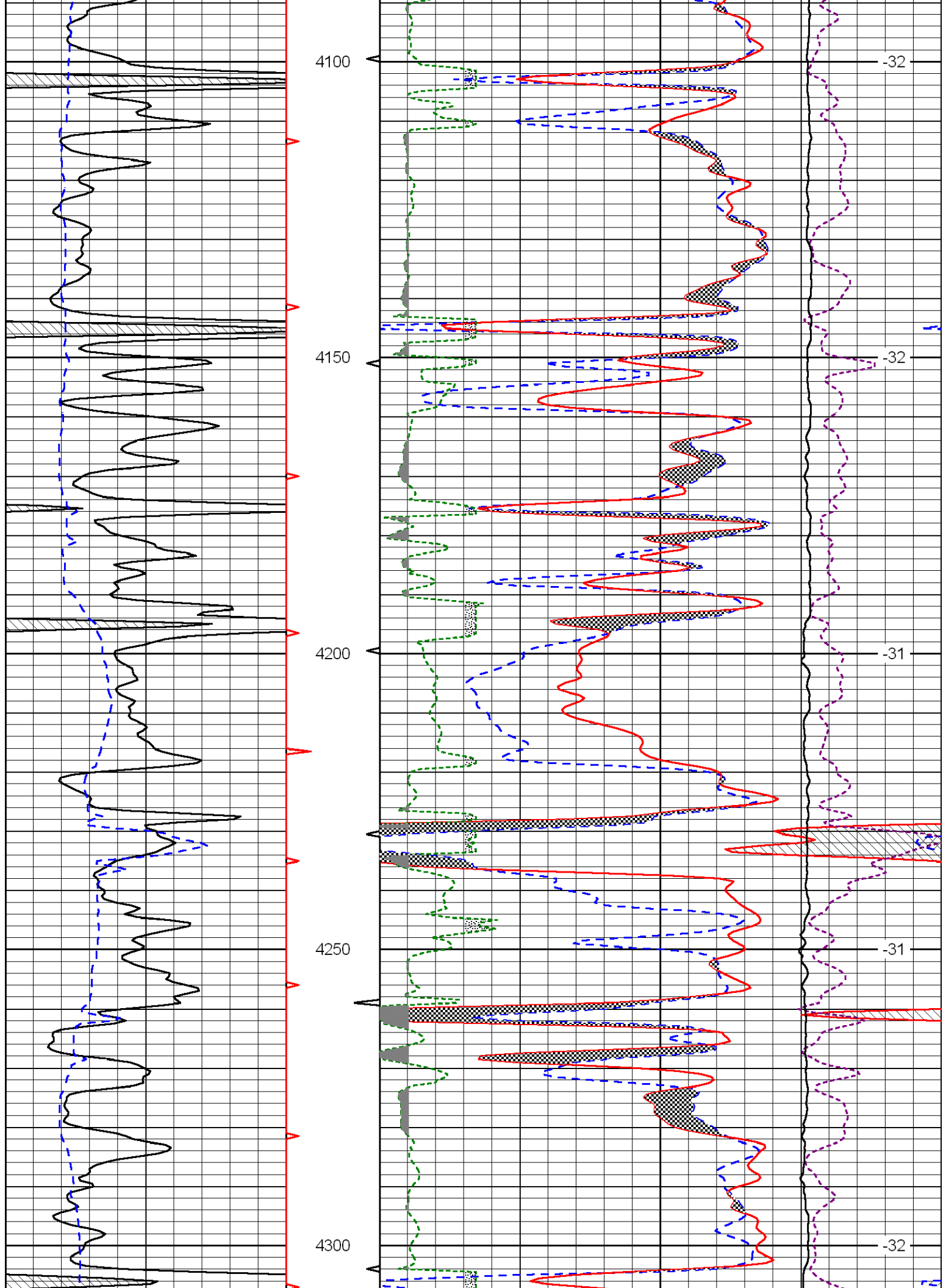
Database File: newgulfhhd.db  
 Dataset Pathname: dil/ngmain  
 Presentation Format: cndlspec  
 Dataset Creation: Fri Aug 31 01:16:06 2012  
 Charted by: Depth in Feet scaled 1:240

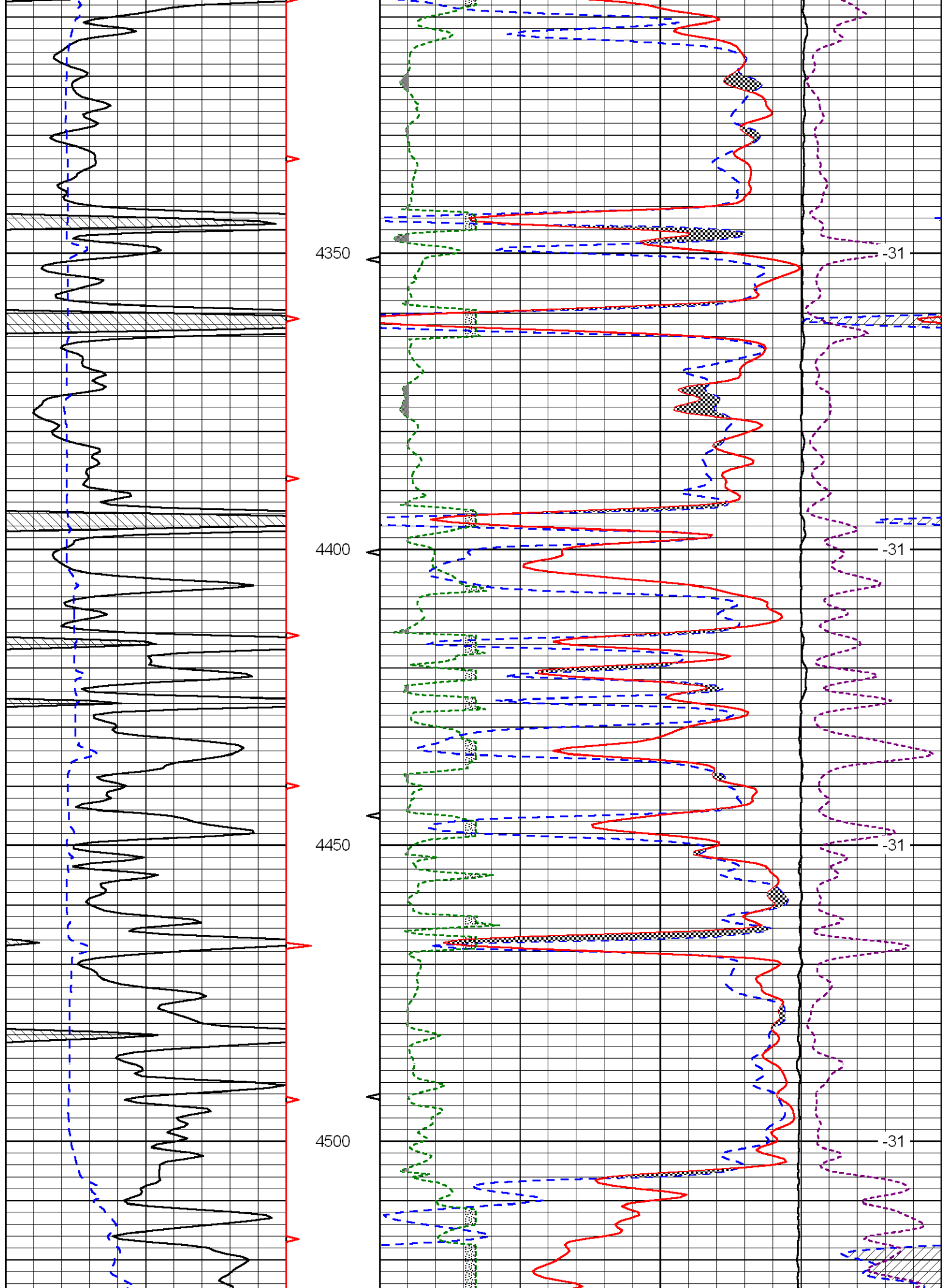


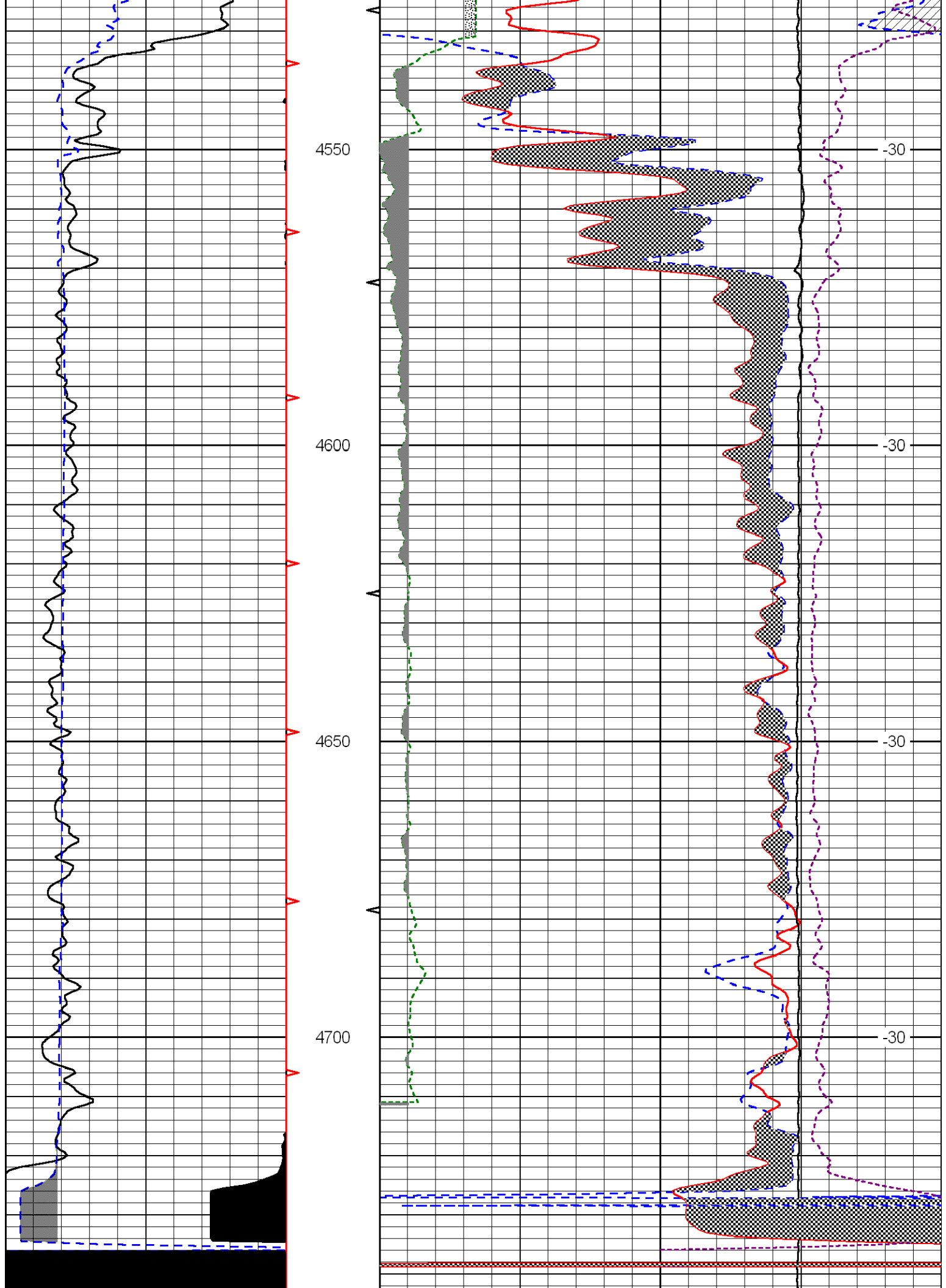


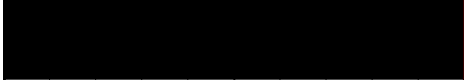












4750

