



Pioneer Energy Services

Microresistivity Log

API No.	15-109-21123-00-00	
Company	New Gulf Operating, LLC	
Well	Prairie Dog #1-05	
Field	Wildcat	
County	Logan	State
		Kansas
Location	2970' FSL & 330' FWL	
Sec: 5	Twp: 15S	Rge: 34W
Permanent Datum	Ground Level	Elevation 2971
Log Measured From	Kelly Bushing	9 Ft. Above Perm. Datum
Drilling Measured From	Kelly Bushing	
		K.B. 2980
		D.F. 2971
		G.L. 2971
		Other Services CNL/CDL DIL

Date	8/30/2012
Run Number	Two
Depth Driller	4740
Depth Logger	4744
Bottom Logged Interval	4743
Top Log Interval	3400
Casing Driller	8.625 @ 263
Casing Logger	263
Bit Size	7.875
Type Fluid in Hole	Chemical
Salinity, ppm CL	7200
Density / Viscosity	9.4 54
pH / Fluid Loss	10.0 8.8
Source of Sample	Flowline
Rm @ Meas. Temp	0.65 @ 80
Rmf @ Meas. Temp	0.49 @ 80
Rmc @ Meas. Temp	0.88 @ 80
Source of Rmf / Rmc	Charts
Rm @ BHT	0.42 @ 123
Operating Rig Time	5 Hours
Max Rec. Temp. F	123
Equipment Number	17
Location	Hays
Recorded By	R. Barnhart
Witnessed By	John Goldsmith

<<< Fold Here >>>

All interpretations are opinions based on inferences from electrical or other measurements and we cannot and do not guarantee the accuracy or correctness of any interpretation, and we shall not, except in the case of gross or willful negligence on our part, be liable or responsible for any loss, costs, damages, or expenses incurred or sustained by anyone resulting from any interpretation made by any of our officers, agents or employees. These interpretations are also subject to our general terms and conditions set out in our current Price Schedule.

Comments

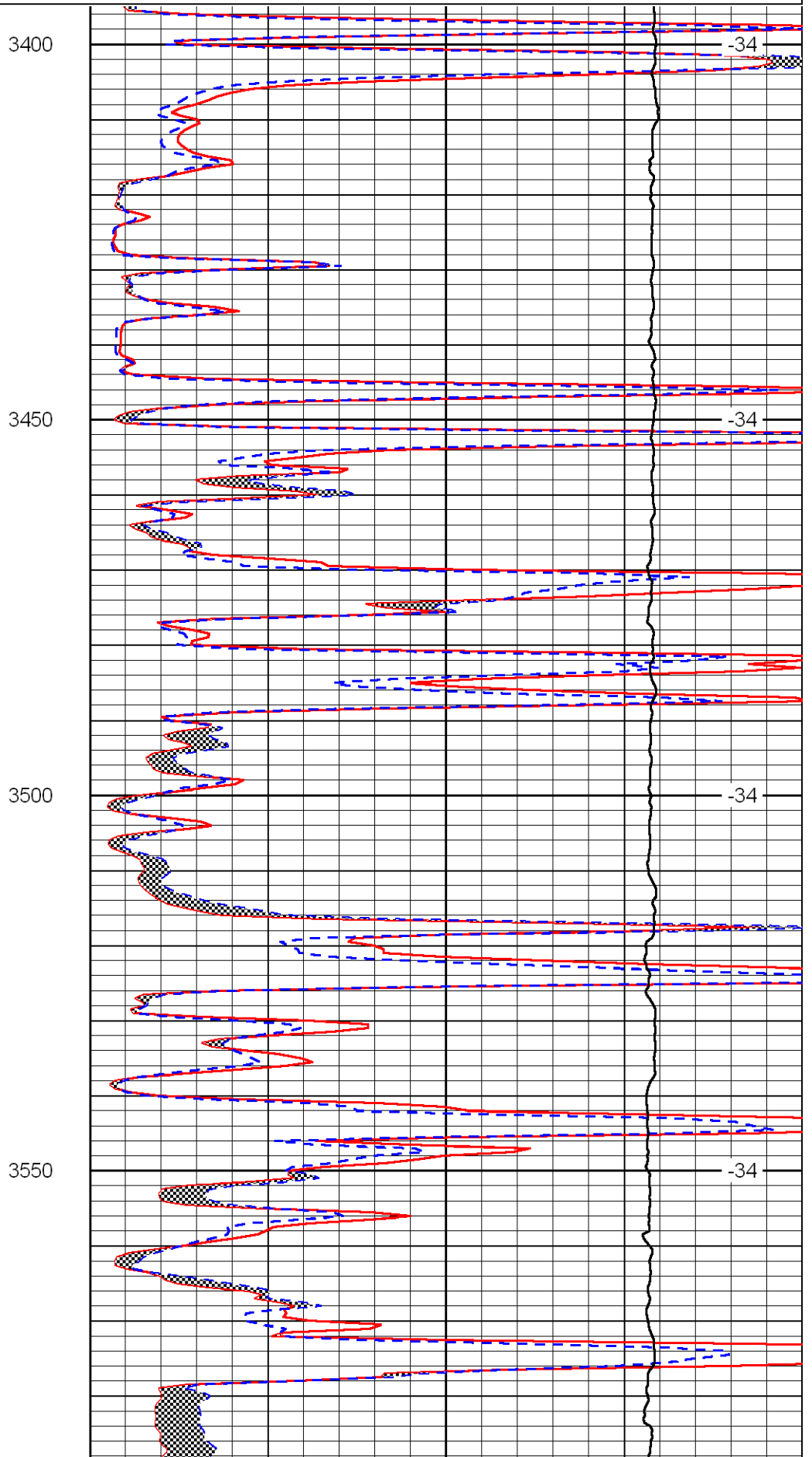
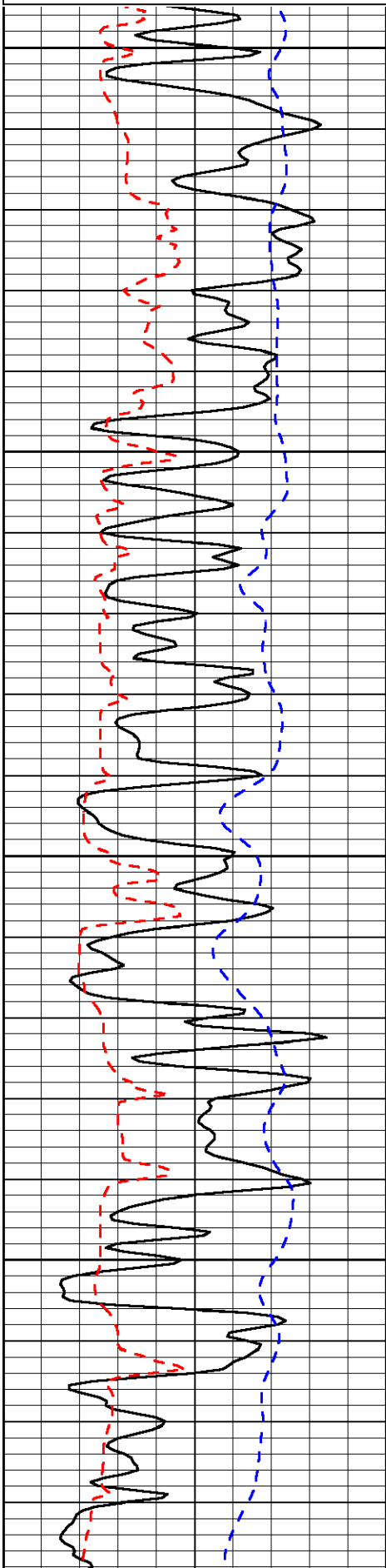
Thank you for using Log-Tech, Inc.
(785) 625-3858

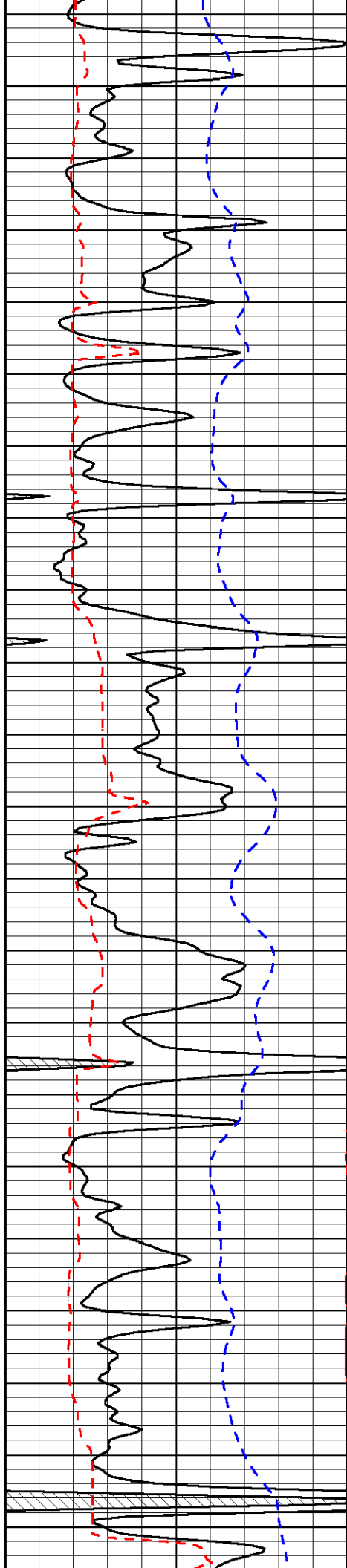
Russell Springs, KS:
1E, 8 1/2S, 2E, S into

Database File: newgulfd.db
 Dataset Pathname: dil/ngmain
 Presentation Format: micro
 Dataset Creation: Fri Aug 31 01:16:06 2012
 Charted by: Depth in Feet scaled 1:240

0	Gamma Ray	150
6	MCAL (GAPI)	16
2.875	Mud Cake (GAPI)	7.875
-200	SP	0

0	Micro Inverse 1 X 1	40
0	Micro Normal 2"	40
10000	Line Weight	0
		LSPD





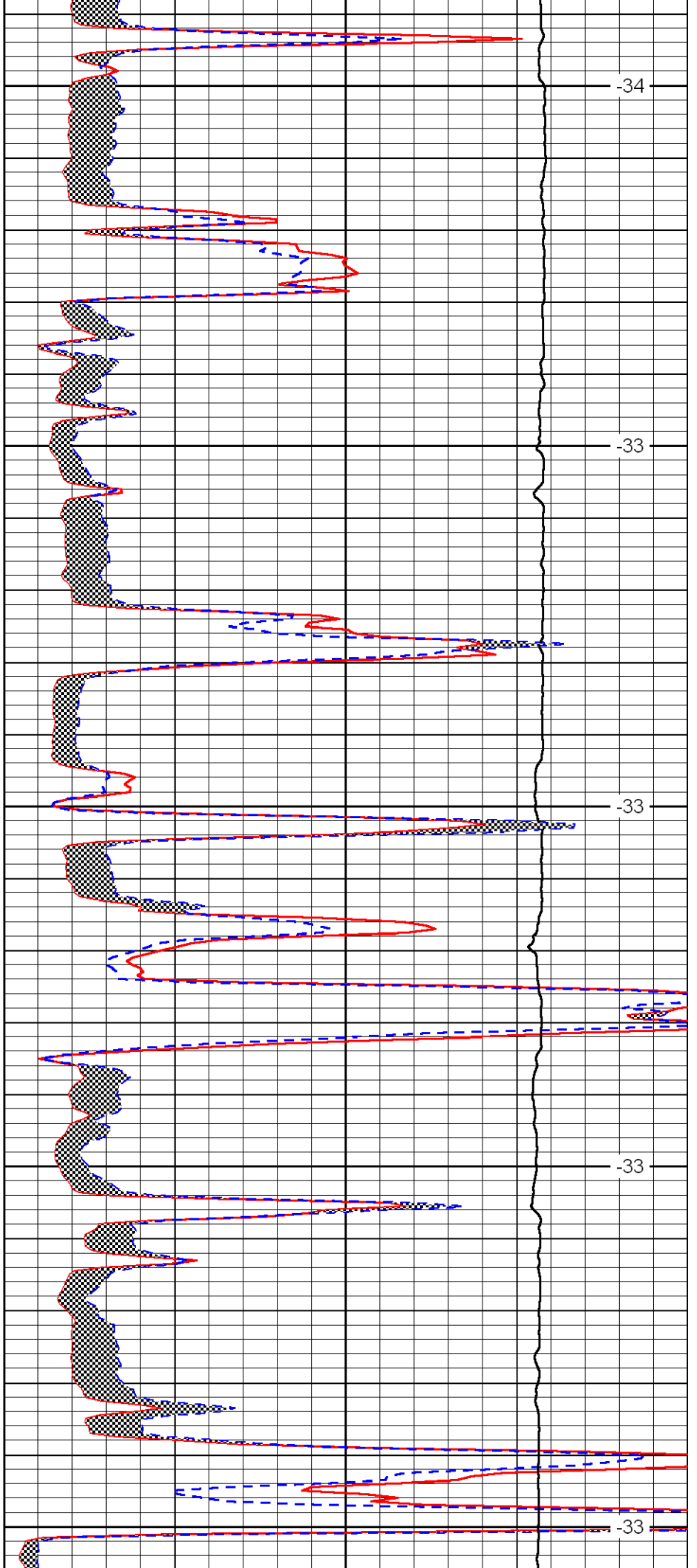
3600

3650

3700

3750

3800



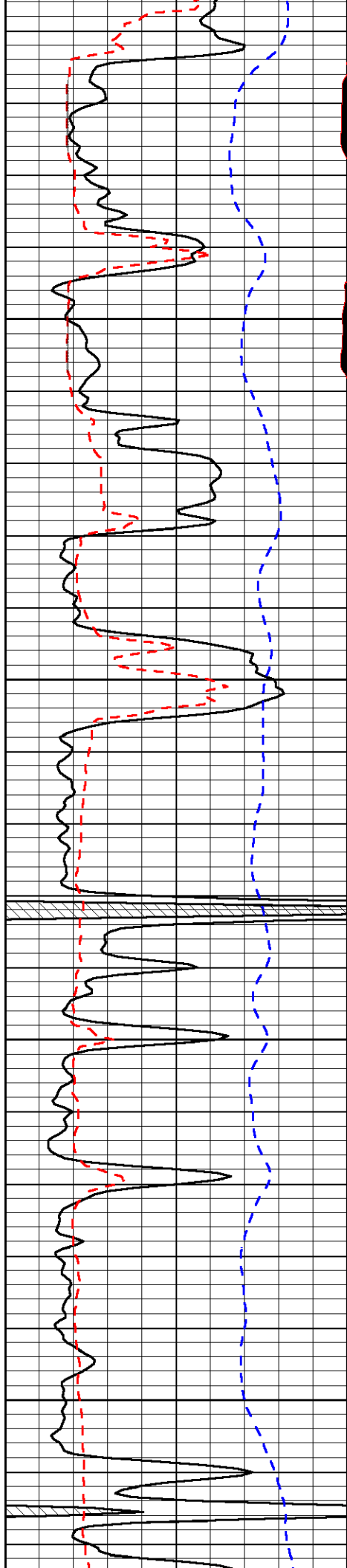
-34

-33

-33

-33

-33

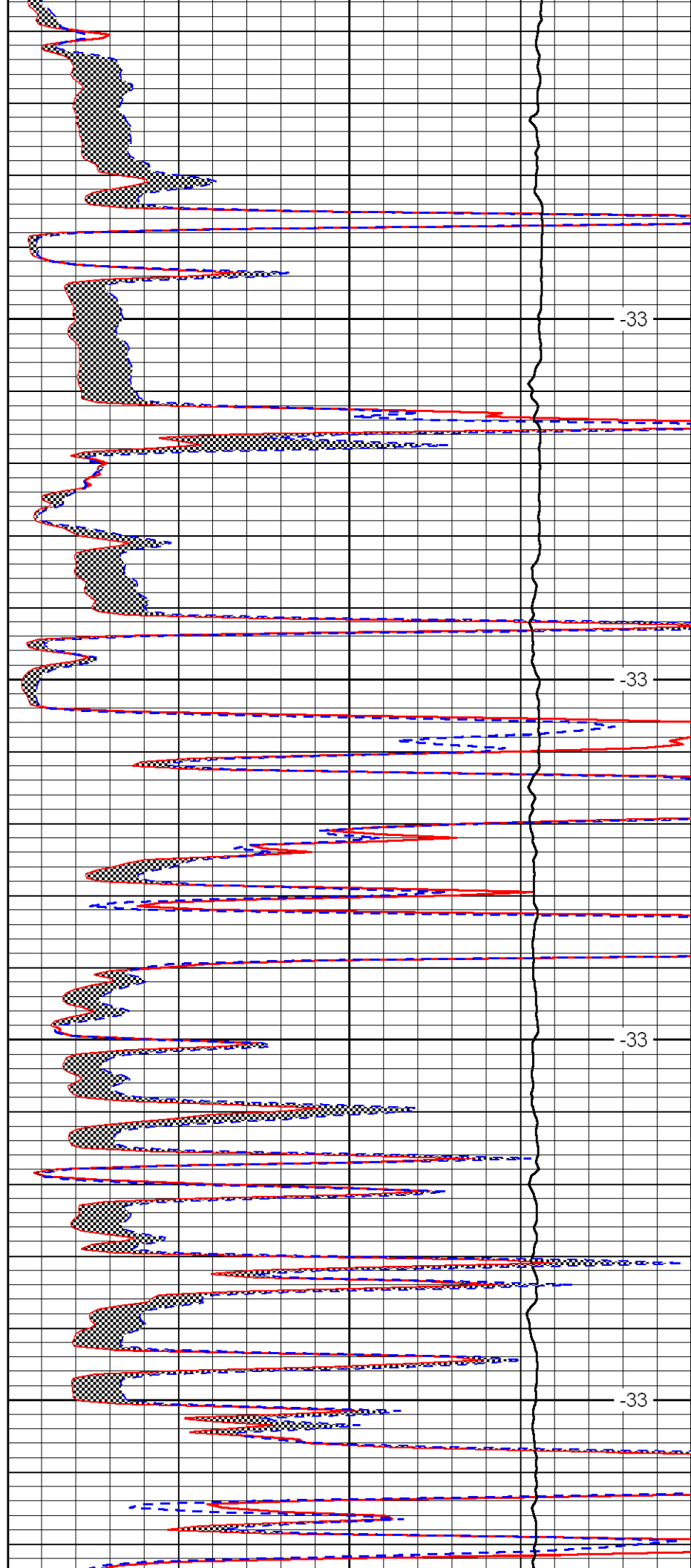


3850

3900

3950

4000

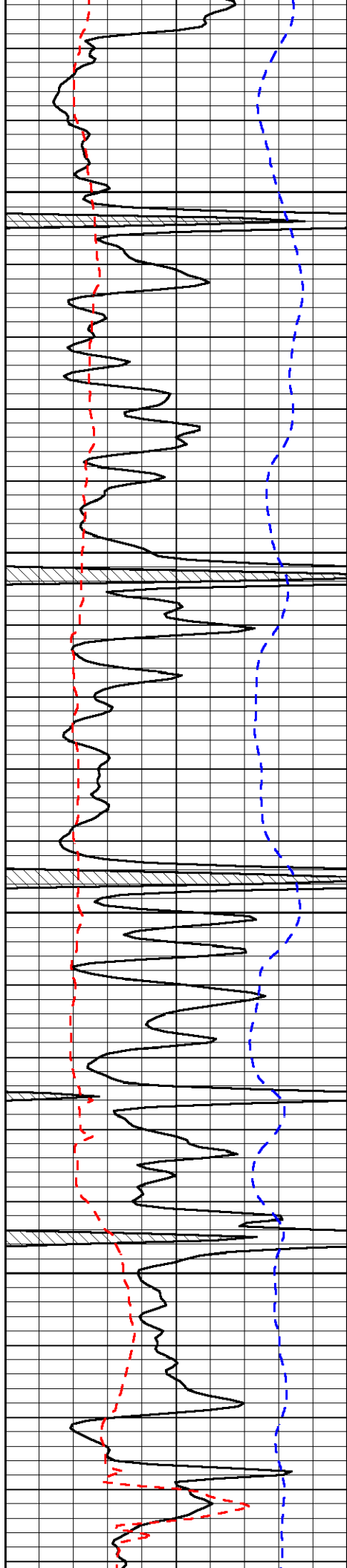


-33

-33

-33

-33

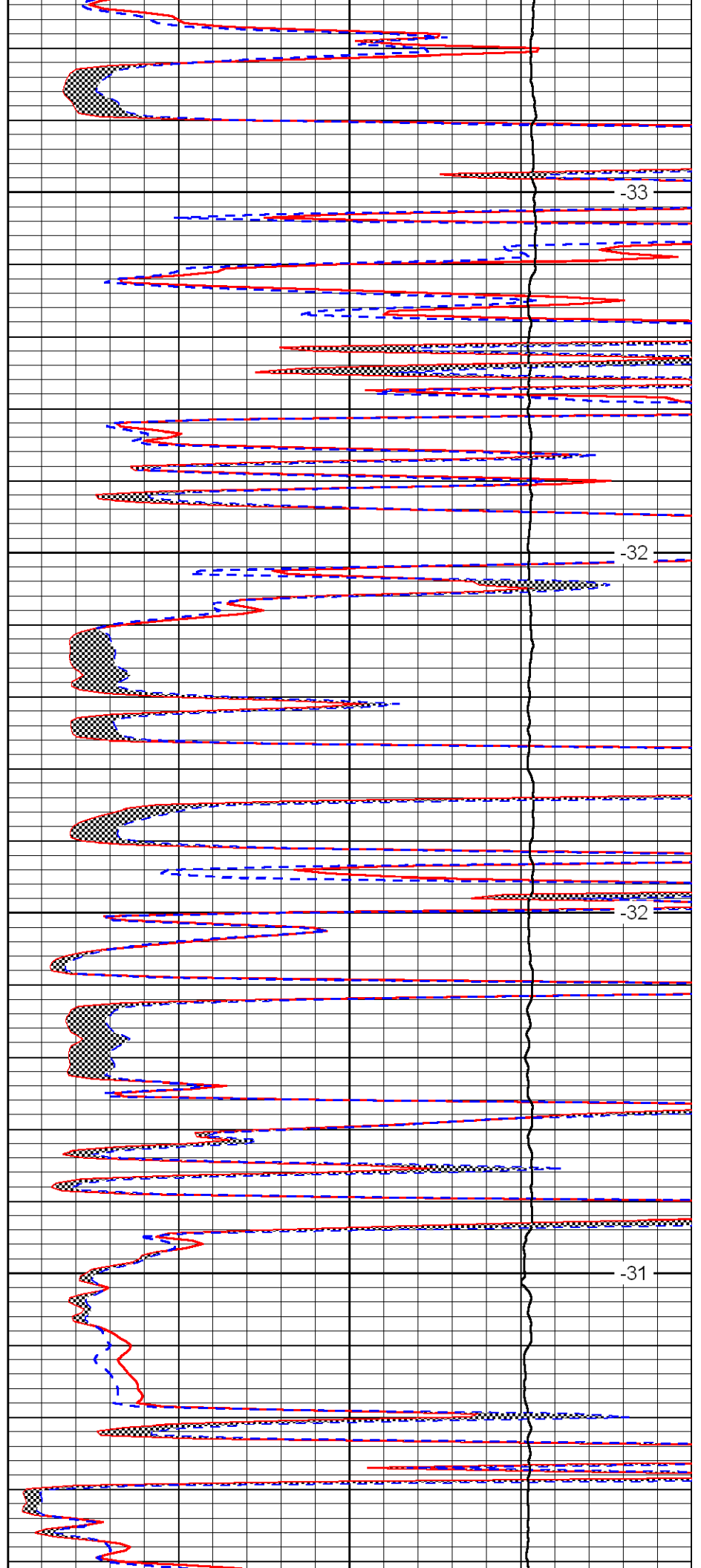


4050

4100

4150

4200

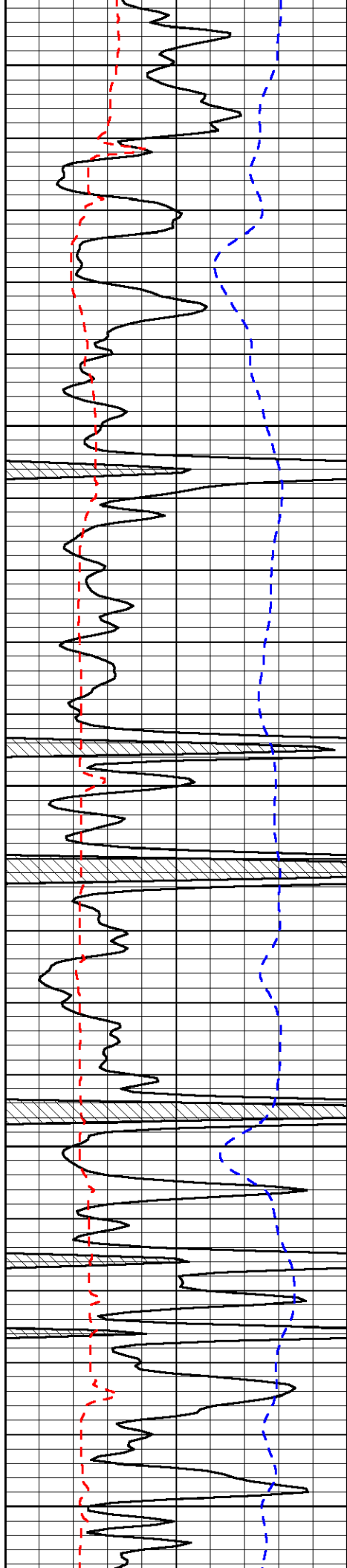


-33

-32

-32

-31



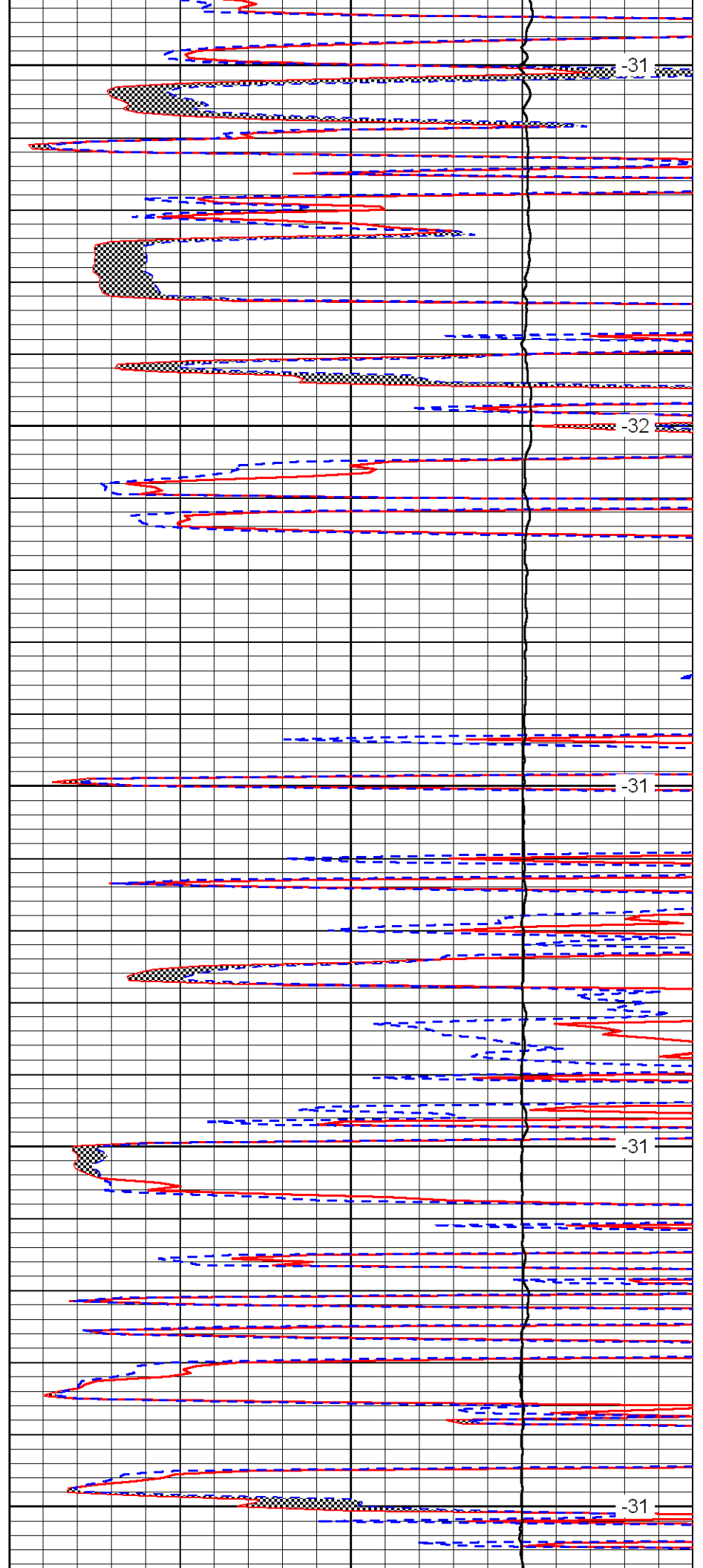
4250

4300

4350

4400

4450



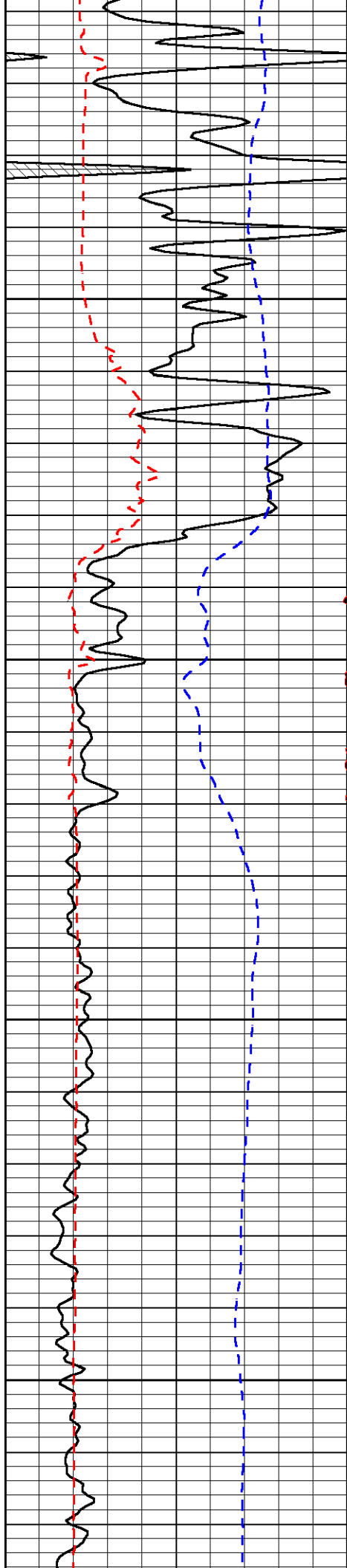
-31

-32

-31

-31

-31

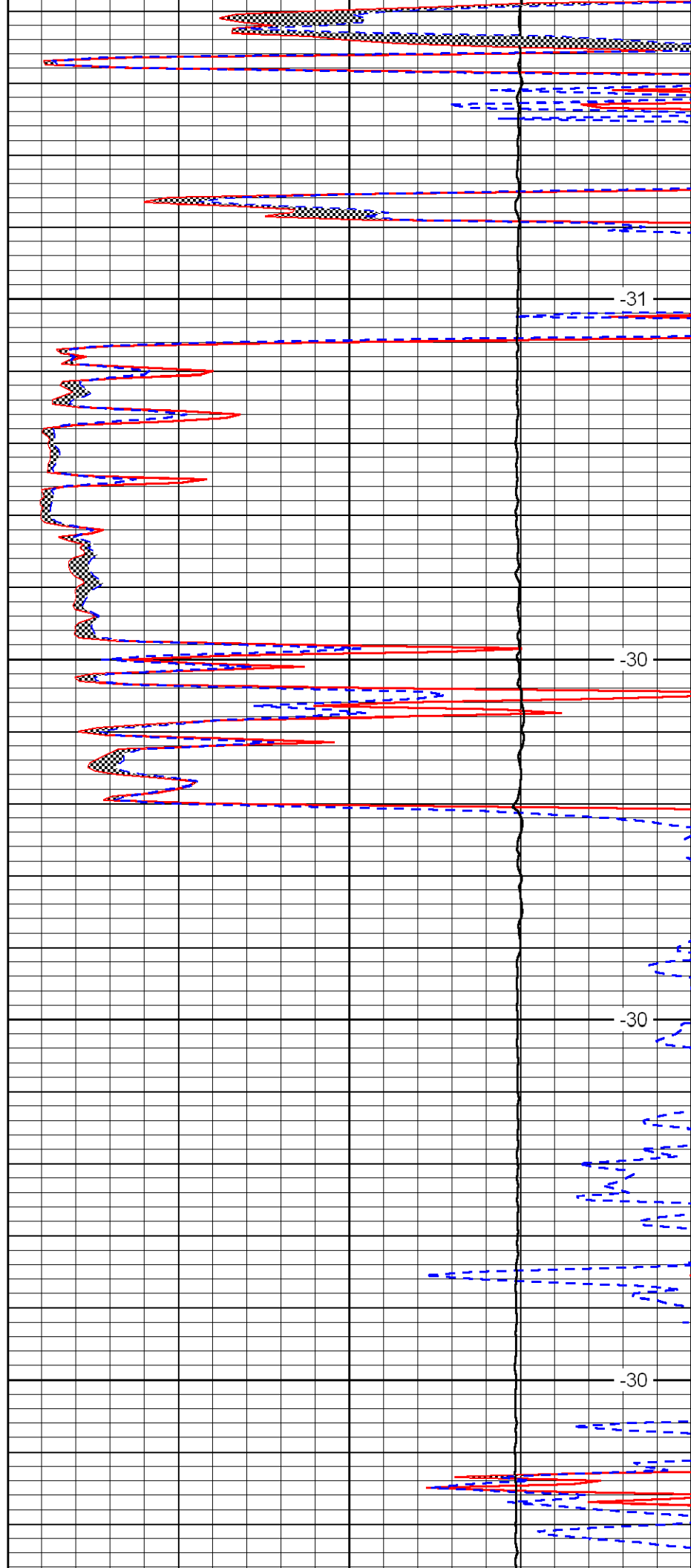


4500

4550

4600

4650

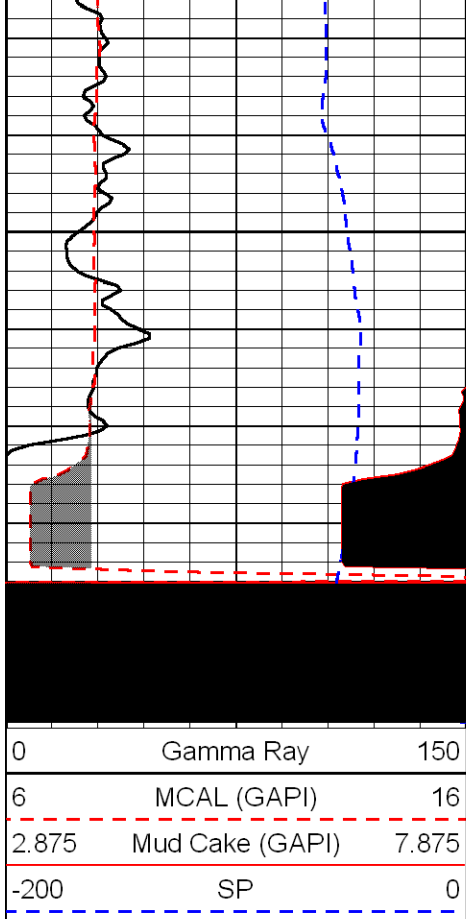


-31

-30

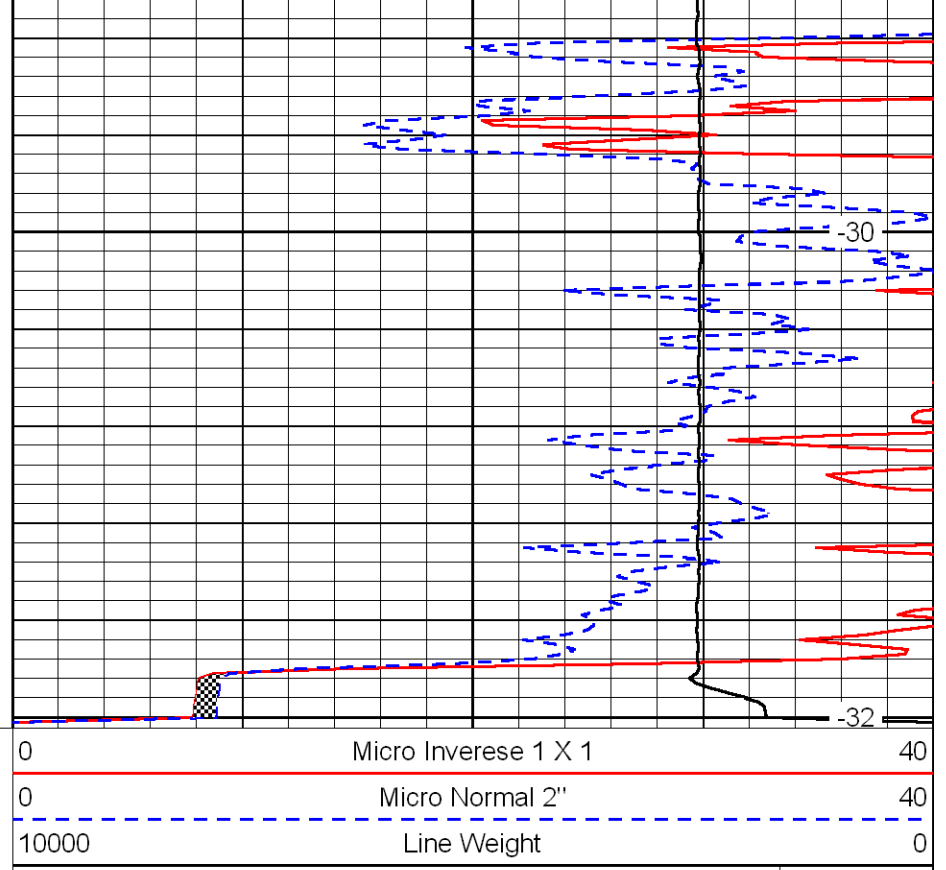
-30

-30



4700

4750



-30

-32

LSPD