



Pioneer Energy Services

# Computer Processed Interpretation

15-109-21123-00-00

API No.

Company **New Gulf Operating, LLC**

Well **Prairie Dog #1-05**

Field **Wildcat**

County **Logan** State **Kansas**

Location **2970' FSL & 330' FWL** Other Services **DIL/CNL/CDL MEL**

Sec: **5** Twp: **15S** Rge: **34W**

Permanent Datum **Ground Level** Elevation **2971**

Log Measured From **Kelly Bushing** 9 Ft. Above Perm. Datum

Drilling Measured From **Kelly Bushing** K.B. 2980 D.F. 2971 G.L. 2971

Date Recorded **8/30/2012**

Depth Logger **4744**

Curve Definitions

SW **Water Saturation**

SXO **Water Saturation In The Flushed Zone**

VCL **Volume Of Clay**

PHIE **Density - Neutron Crossplot Shale Corrected**

BWV **Bulk Volume Water**

BWMSXO **Bulk Volume Water In Flushed Zone**

DCAL **Caliper**

SPC **SP Corrected For Baseline**

DGA **Apparent Grain Density**

Payflag **If PHIE> 2 %, VCL< 40 %, SPC> -10 , SW< 50 % & DCAL< 11**

Recorded By **R. Barnhart**

Witnessed By **John Goldsmith**

Analysis By **T. Martin**

<<< Fold Here >>>

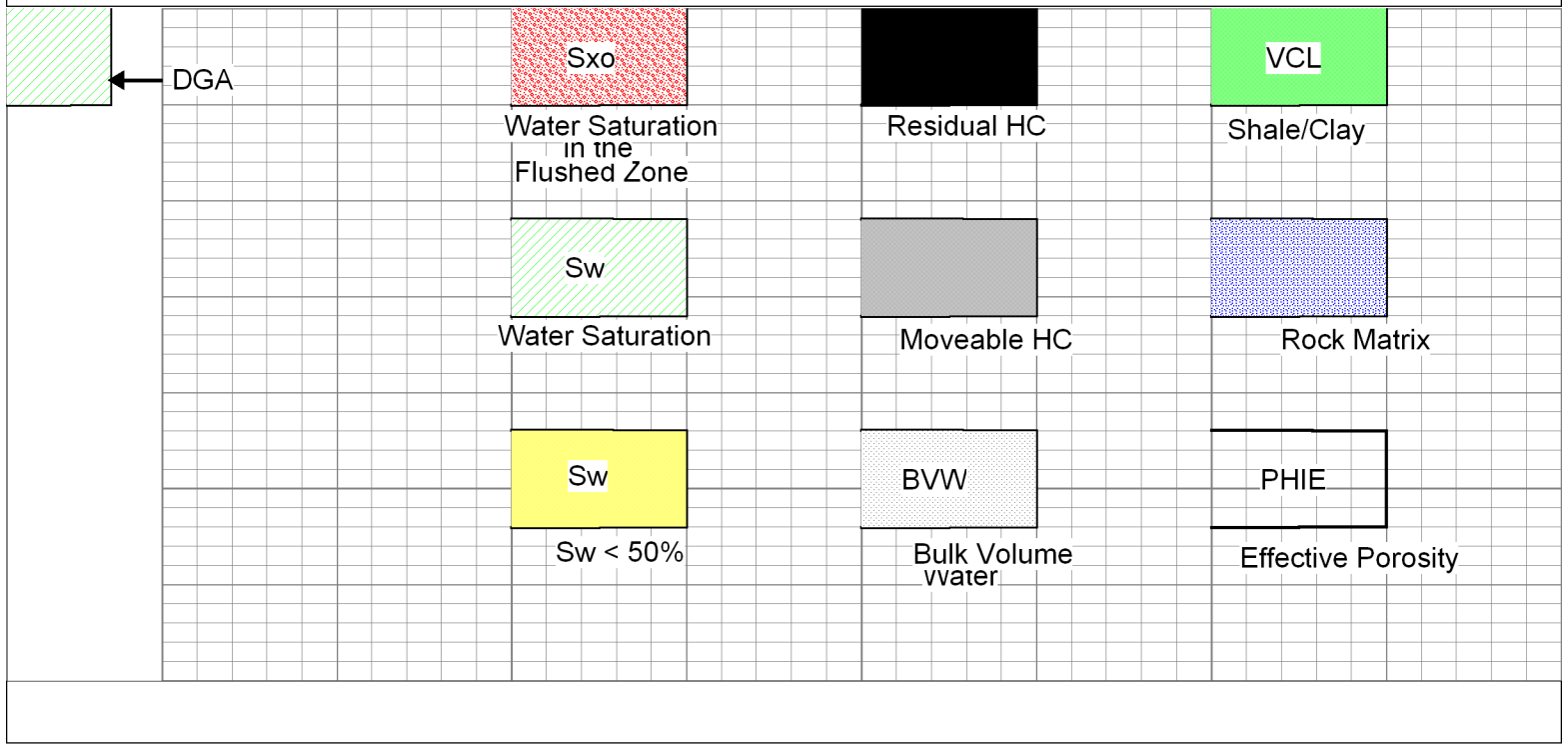
All interpretations are opinions based on inferences from electrical or other measurements and we cannot and do not guarantee the accuracy or correctness of any interpretation, and we shall not, except in the case of gross or willful negligence on our part, be liable or responsible for any loss, costs, damages, or expenses incurred or sustained by anyone resulting from any interpretation made by any of our officers, agents or employees. These interpretations are also subject to our general terms and conditions set out in our current Price Schedule.

### Comments

Thank you for using Log-Tech, Inc.  
[www.logtechinc.com](http://www.logtechinc.com)

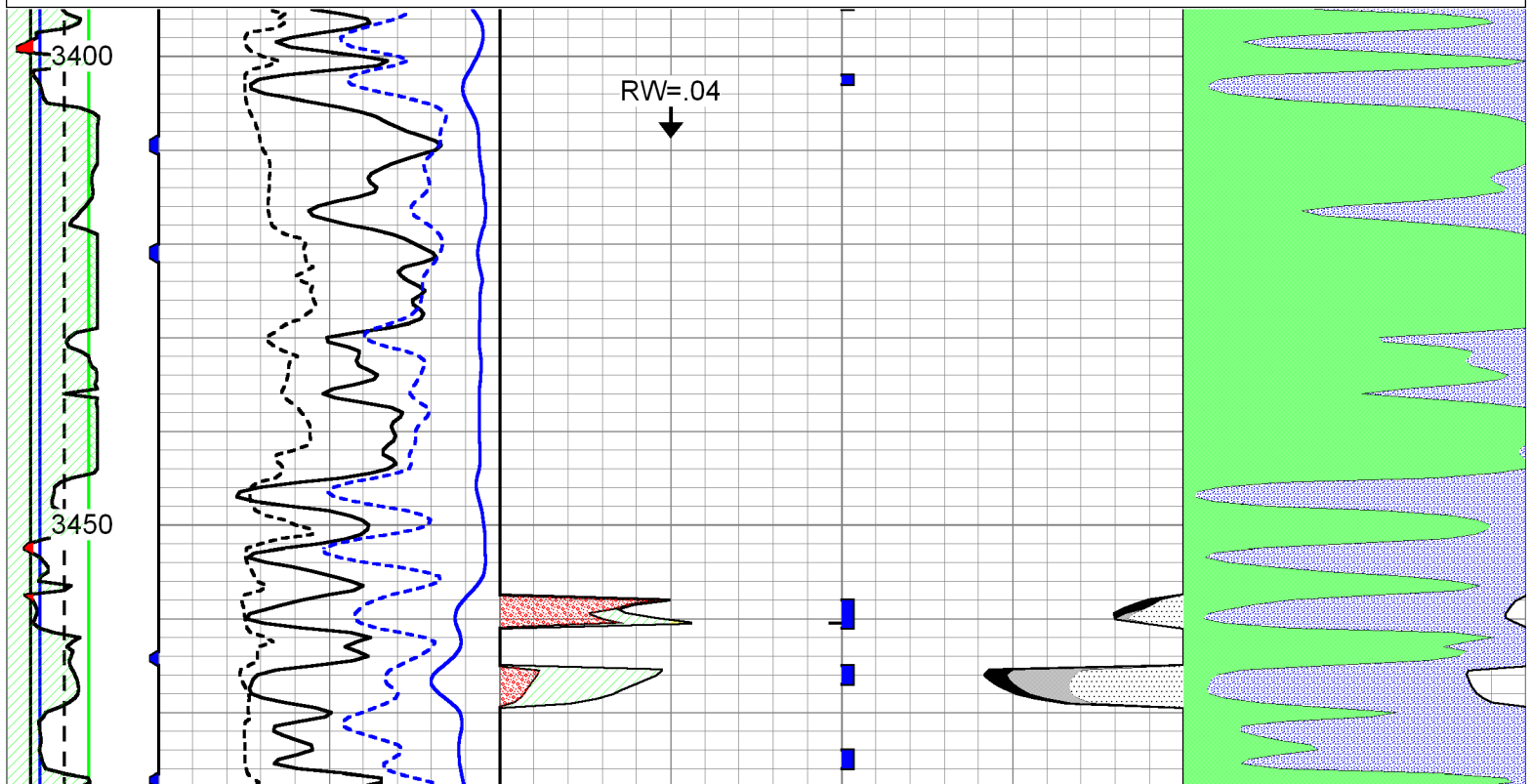
Russell Springs, KS:  
1E, 8 1/2S, 2E, S into

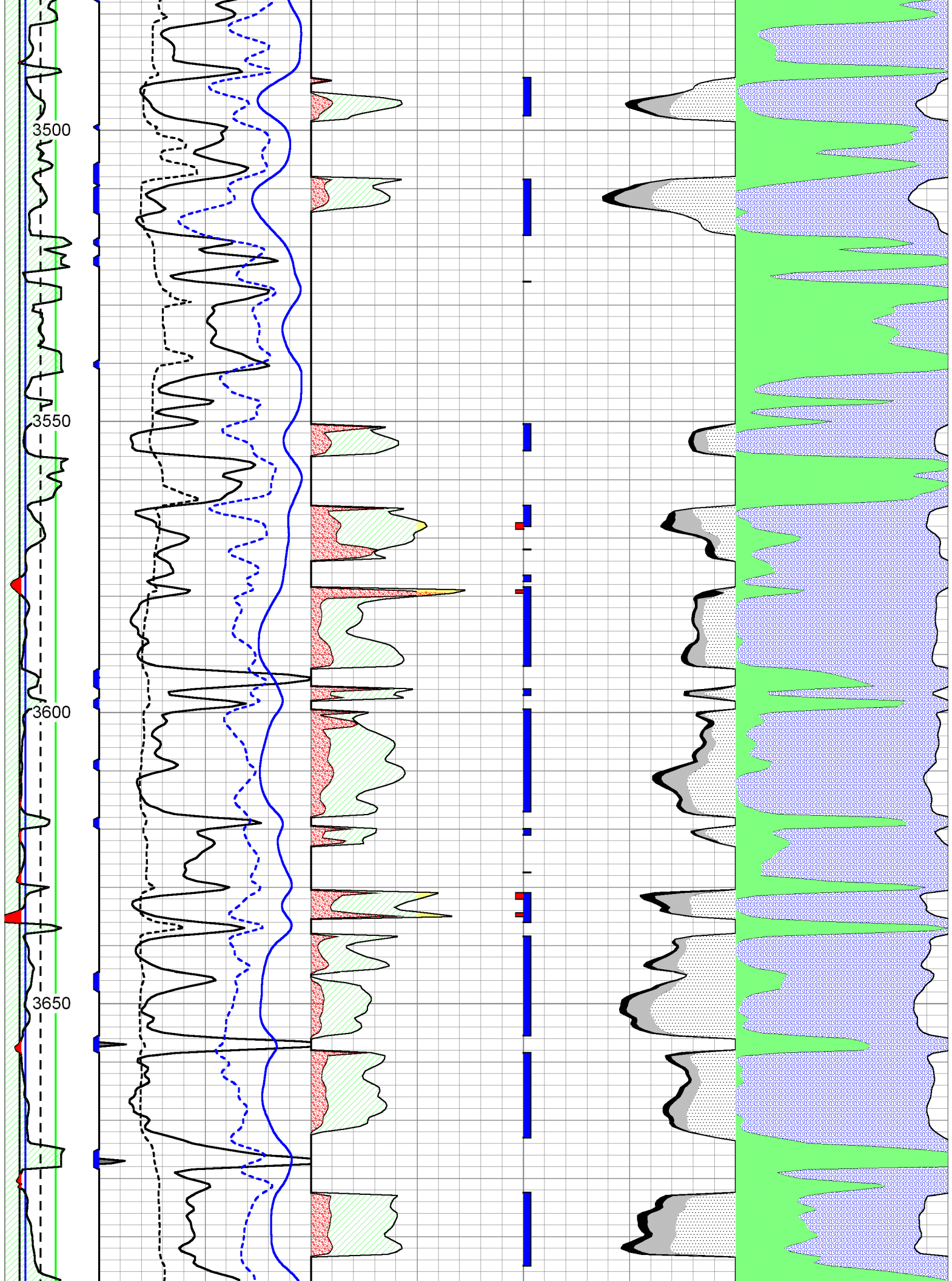
Database File: c:\warrior\data\cross plots\2wxplt.db  
Dataset Pathname: litho  
Presentation Format: 2wxplt  
Dataset Creation: Thu Apr 24 14:32:02 1997  
Charted by: Depth in Feet scaled 1:240



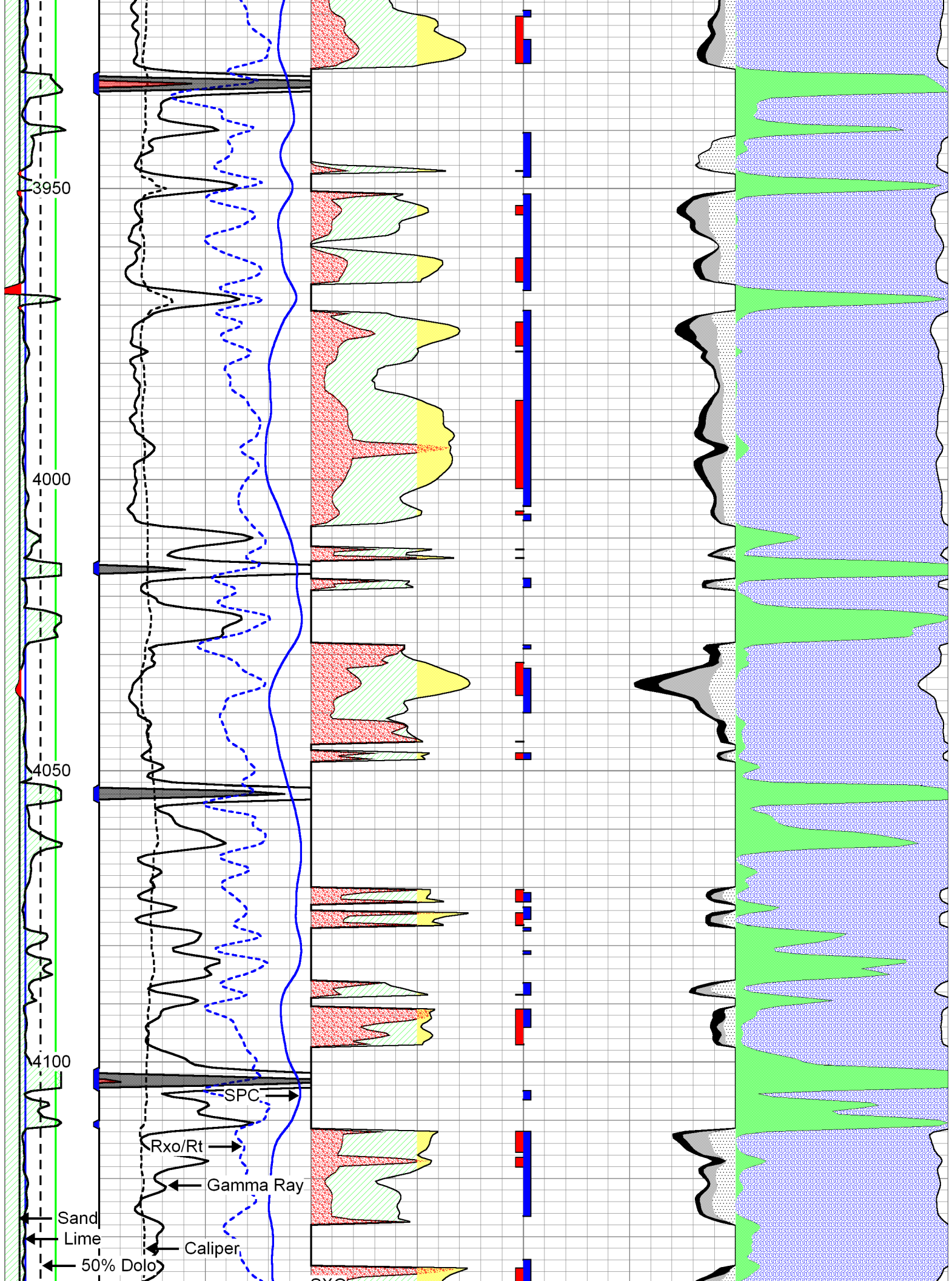
Database File: newgulfhf.db  
 Dataset Pathname: dil/ngcpi  
 Presentation Format: calc  
 Dataset Creation: Fri Aug 31 14:00:32 2012  
 Charted by: Depth in Feet scaled 1:240

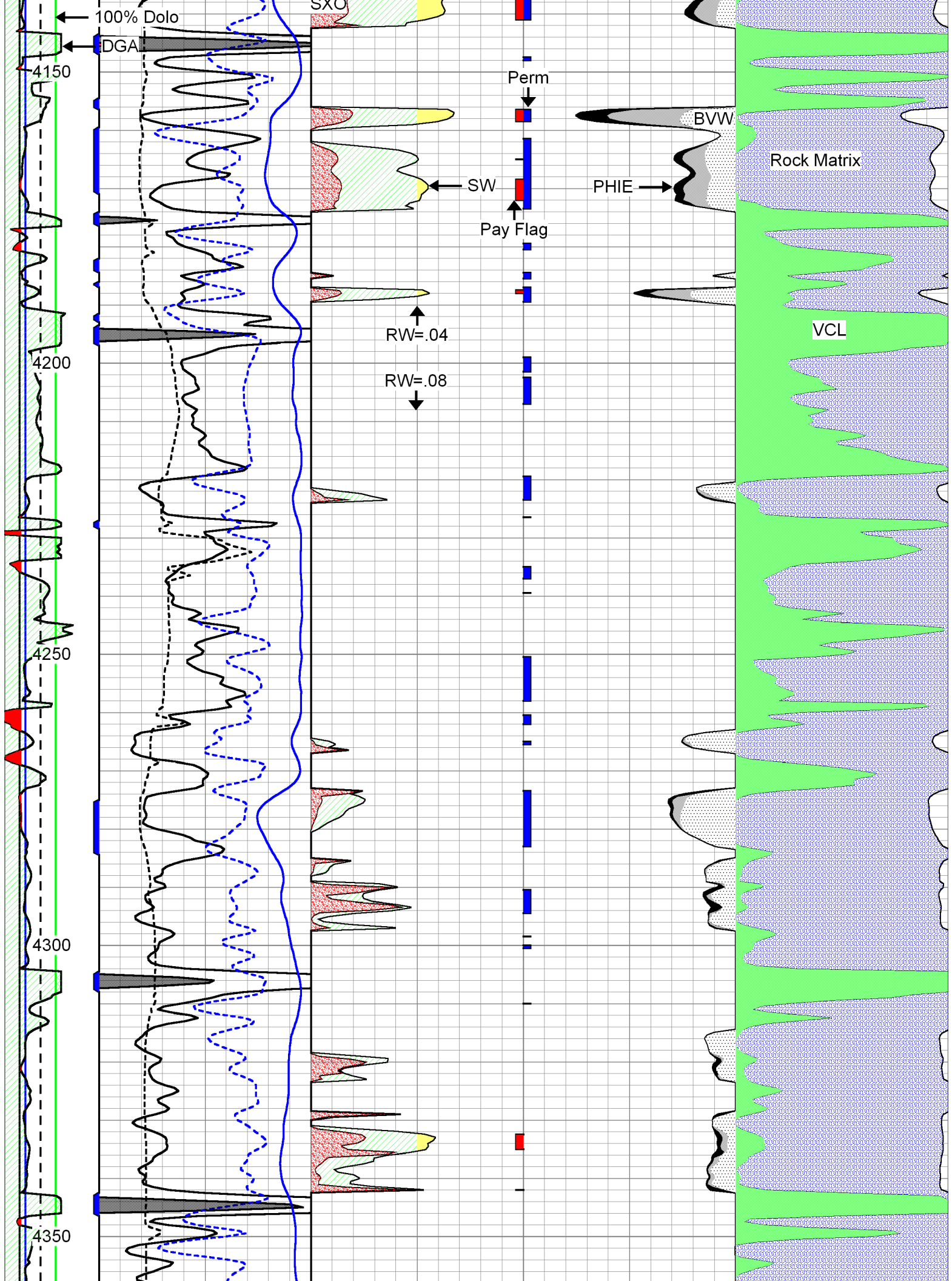
20	CLF	1	0	Gamma Ray	150	1	SW	0	0.3	PHIE	0	0	VCL	1
2.6	LM	3.1	6	DCAL (GAPI)	16	30	PAYFLAG	0	0.3	BVW	0	1	PHIE	0
	DGA		-150	SPC	0	1	SXO	0	0	PERM	30			
2.6	3.1							0.3		BVWSXO	0			



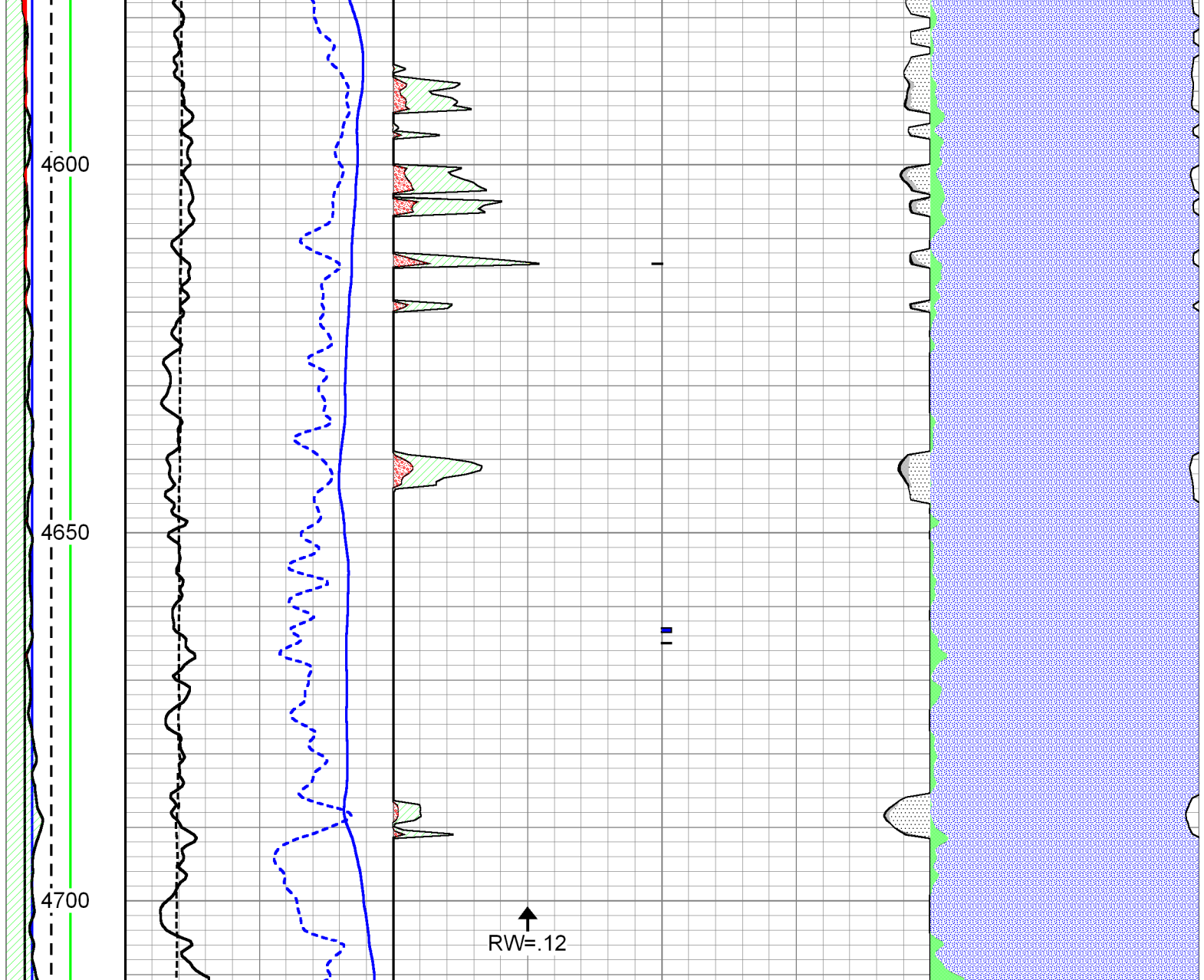












20	CLF	1	0	Gamma Ray	150	1	SW	0	0.3	PHIE	0	0	VCL	1
2.6	LM	3.1	6	DCAL (GAPI)	16	30	PAYFLAG	0	0.3	BVW	0	1	PHIE	0
	DGA		-150	SPC	0	1	SXO	0	0	PERM	30			
2.6		3.1							0.3	BVWSXO	0			