



Pioneer Energy Services

Radiation Guard Log

15-101-22392-00-00

API No.

Company **FIML Natural Resources, LLC**

Well **Burnett 6D-15-2027**

Field **Witt**

County **Lane**

State

Kansas

Location

2310' FNL & 2310' FWL

Other Services
None

Sec: **15** Twp: **20S** Rge: **27W**

Permanent Datum **Ground Level** Elevation **2609**

Log Measured From **Kelly Bushing**

10 Ft. Above Perm. Datum

Elevation
K.B. 2619
D.F. 2609
G.L. 2609

Drilling Measured From **Kelly Bushing**

9/6/2012

Date

Run Number **One**

Depth Driller

5000

Depth Logger

4998

Bottom Logged Interval

4997

Top Log Interval

4000

Casing Driller

8.625 @ 375

Casing Logger

NA

Bit Size

7.875

Type Fluid in Hole

Chemical

Salinity, ppm CL

3300

Density / Viscosity

9.1 45

pH / Fluid Loss

9.0 8.8

Source of Sample

Flowline

Rm @ Meas. Temp

0.80 @ 75

Rmf @ Meas. Temp

0.60 @ 75

Rmc @ Meas. Temp

1.08 @ 75

Source of Rmf / Rmc

Charts

Rm @ BHT

0.47 @ 128

Operating Rig Time

2 Hours

Max Rec. Temp. F

128

Equipment Number

91

Location

Hays

Recorded By

D. Schmidt

Witnessed By

Gary Doke

Kurt Talbott

<<< Fold Here >>>

All interpretations are opinions based on inferences from electrical or other measurements and we cannot and do not guarantee the accuracy or correctness of any interpretation, and we shall not, except in the case of gross or willful negligence on our part, be liable or responsible for any loss, costs, damages, or expenses incurred or sustained by anyone resulting from any interpretation made by any of our officers, agents or employees. These interpretations are also subject to our general terms and conditions set out in our current Price Schedule.

Comments

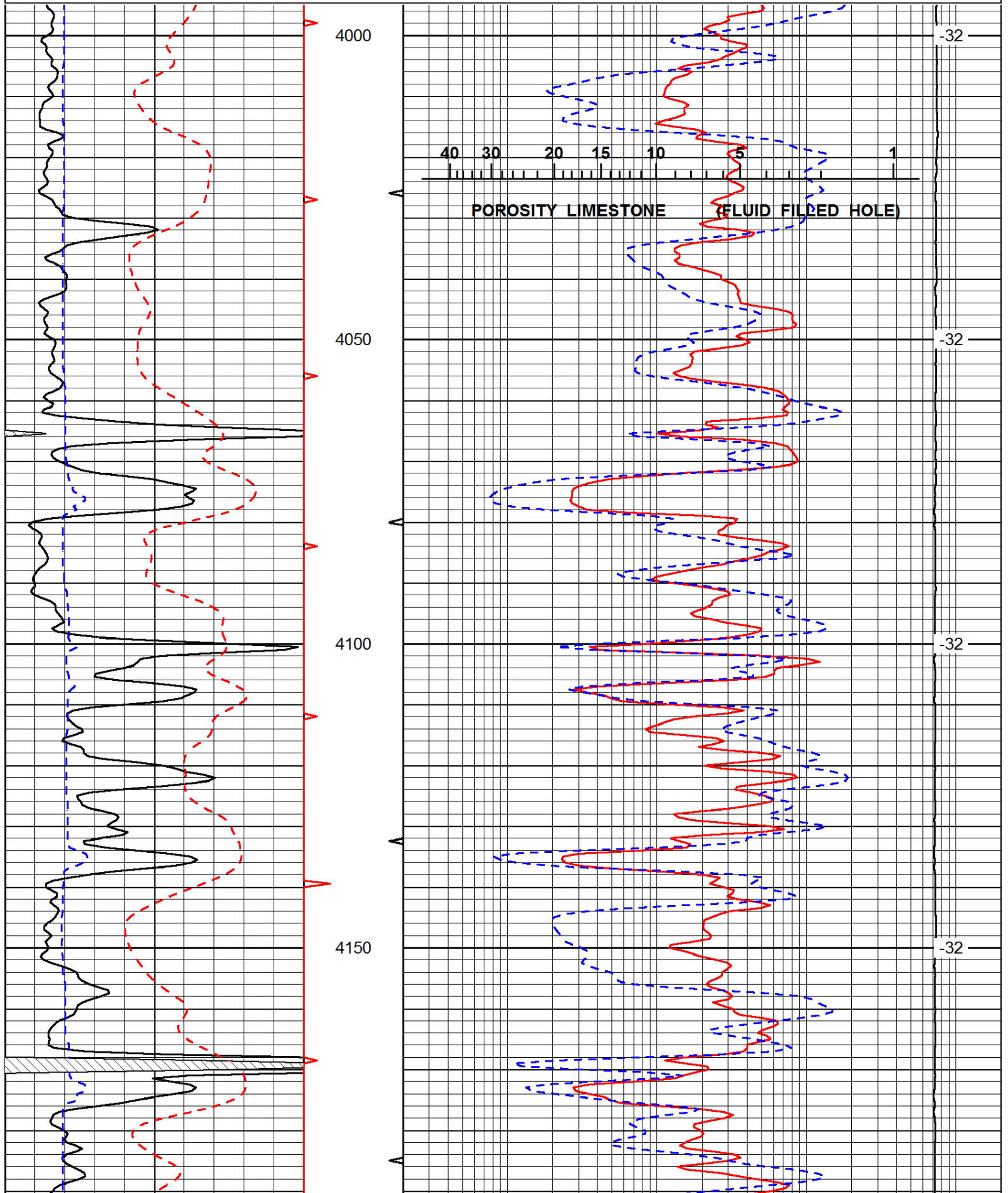
Thank you for using Pioneer Energy Services
www.pioneerenergy.com
 785 625 3858
 Ness City,
 22 West to Turkey Red Rd, 11 1/2 South,
 East into

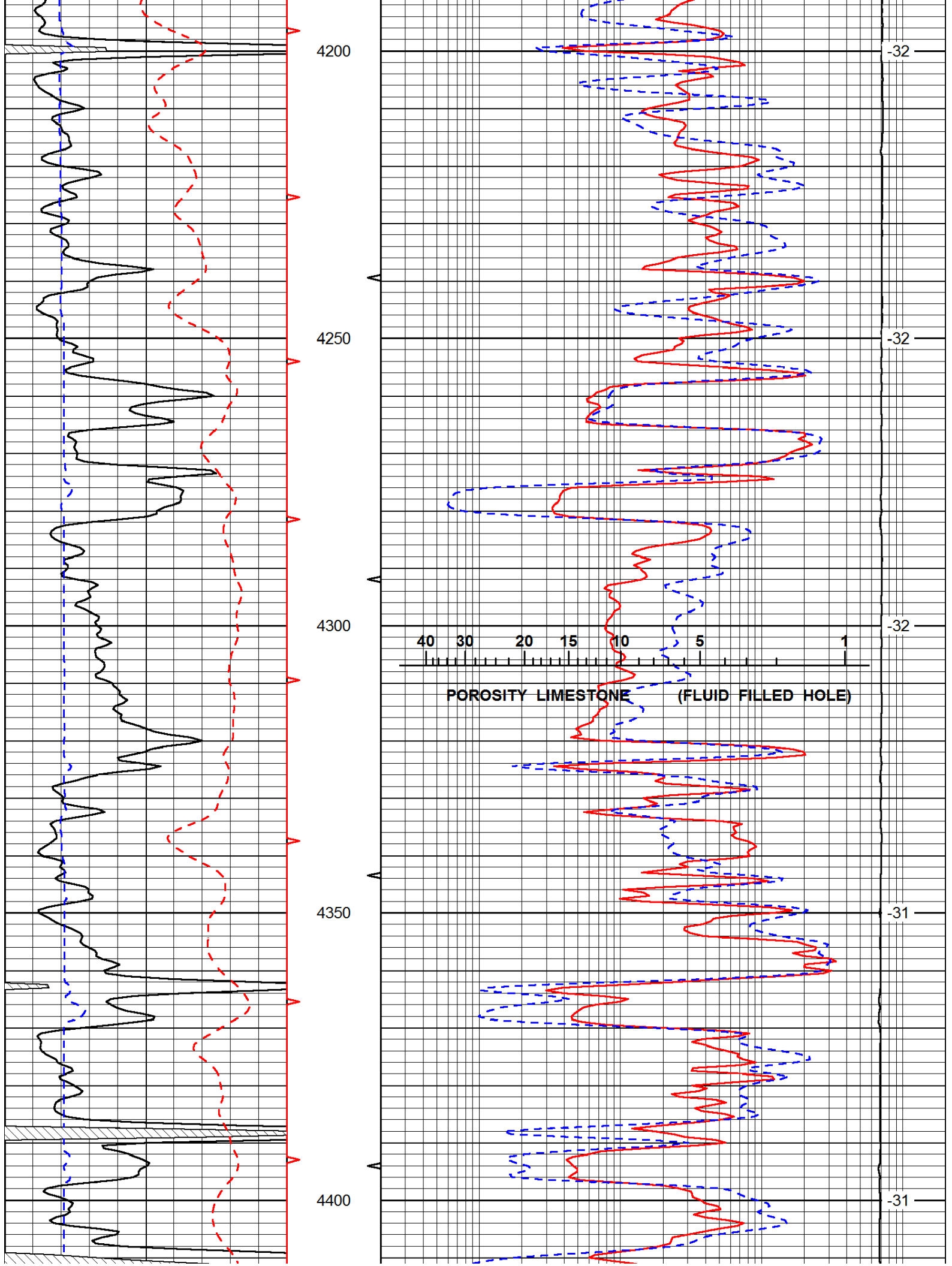
Database File: c:\warrior\data\fiml_burnett 6d-15-2027\fimlhd.db
 Dataset Pathname: rag/fimlrag
 Presentation Format: rag
 Dataset Creation: Thu Sep 06 11:50:28 2012
 Charted by: Depth in Feet scaled 1:240

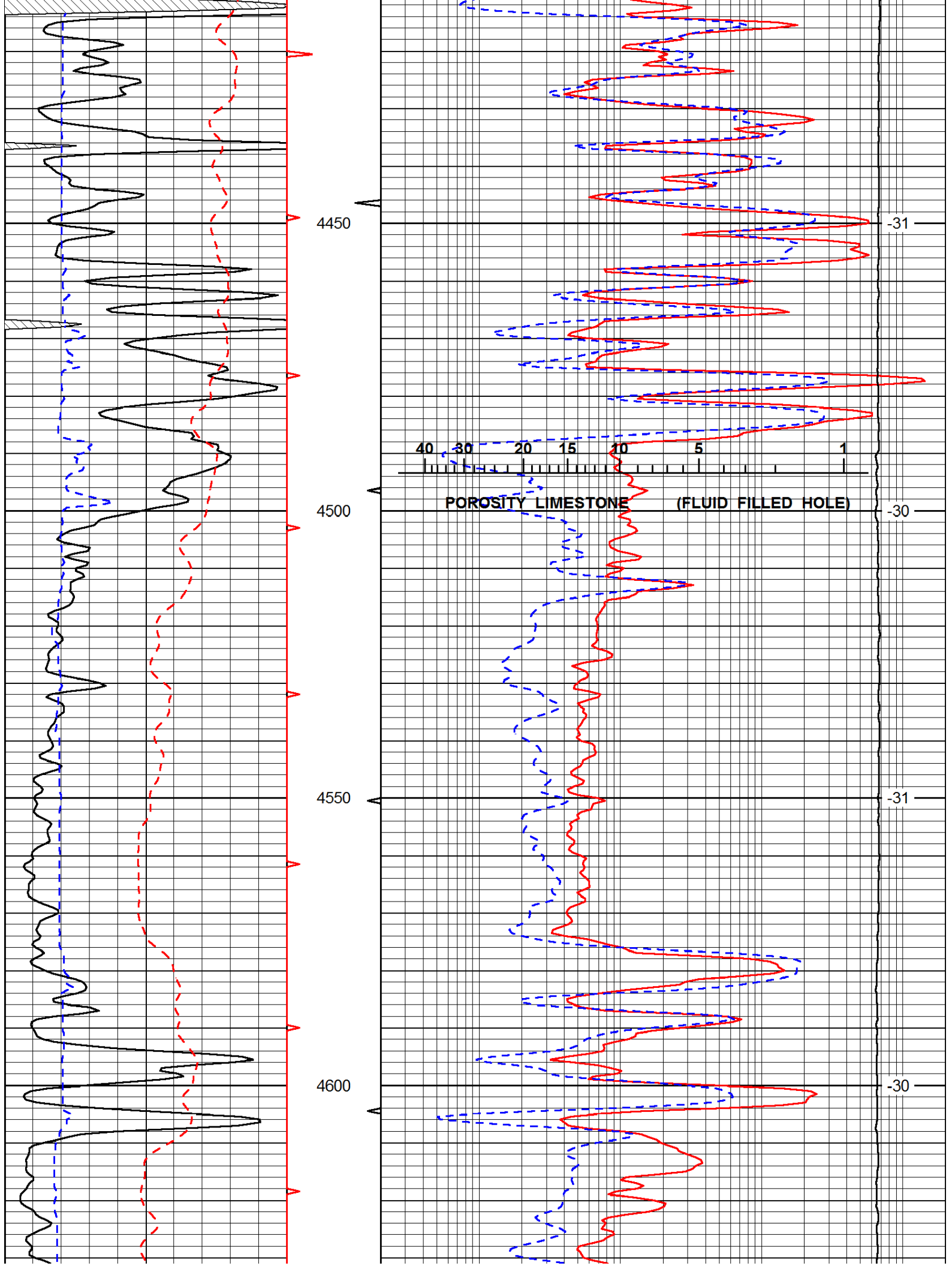
0	Gamma Ray	150
6	Caliper (GAPI)	16
-200	SP (mV)	0

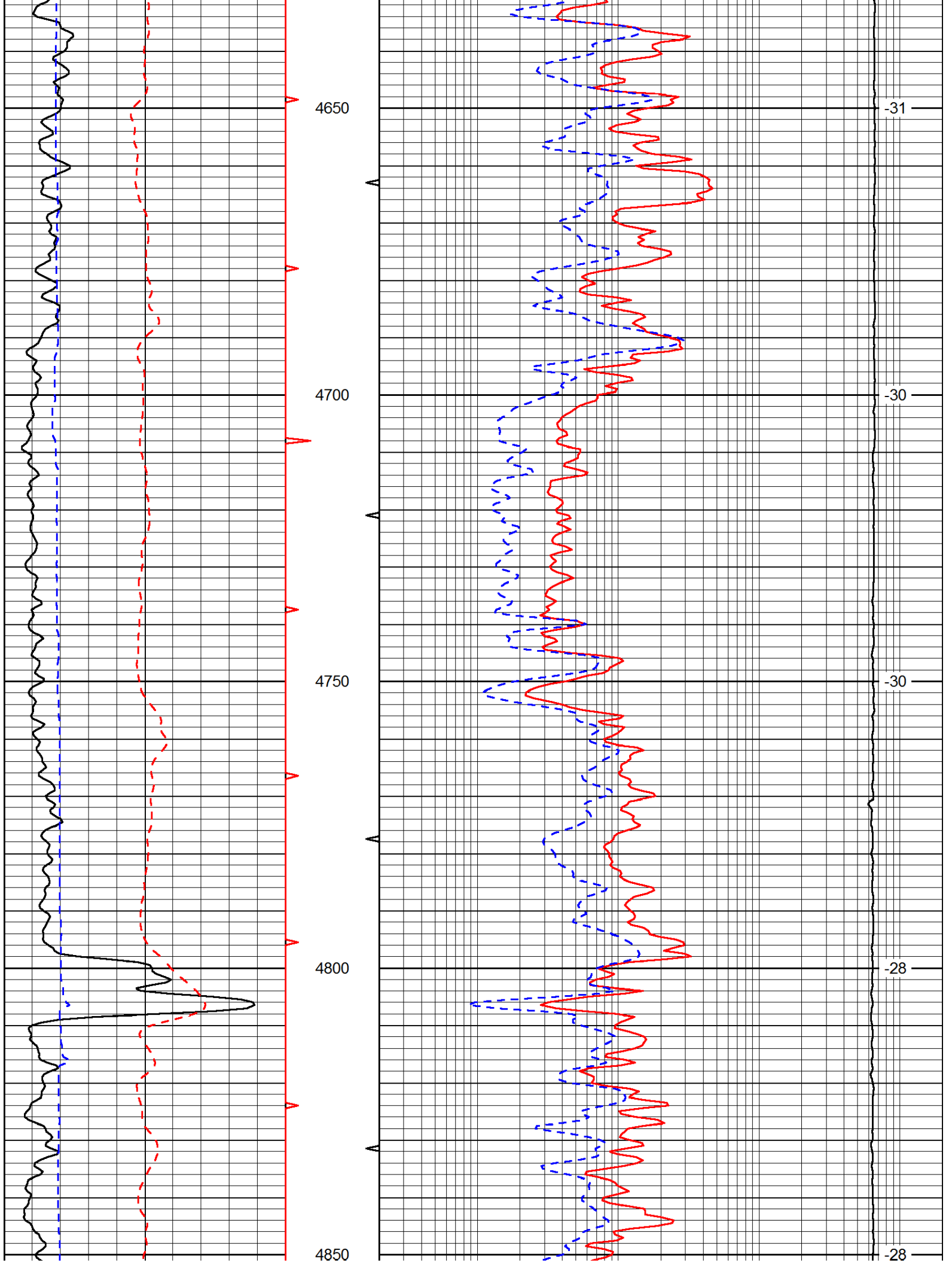
0.2	Long Guard	2000
560	Neutron	2160
15000	Line Tension	0

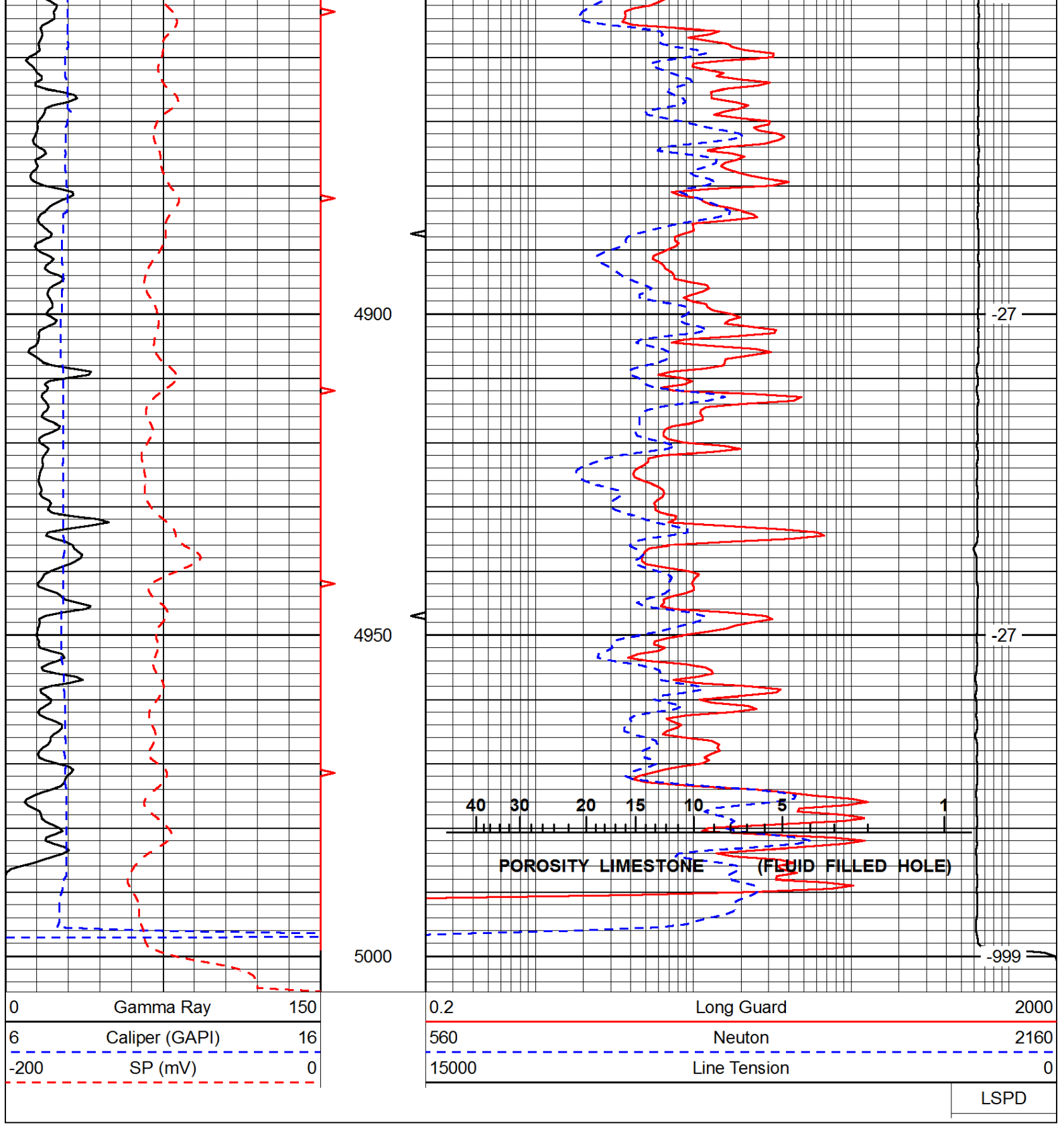
LSPD











0	Gamma Ray	150
6	Caliper (GAPI)	16
-200	SP (mV)	0

0.2	Long Guard	2000
560	Neutron	2160
15000	Line Tension	0

LSPD