



Pioneer Energy Services

# Microresistivity Log

15-179-21312-00-00

API No.

Company **Culbreath Oil & Gas Company, Inc.**

Well **Coburn #3-8**

Field **Unnamed**

County **Sheridan** State

**Kansas**

Location

1980' FNL & 1320' FWL

Other Services  
CNL/CDL  
DIL/BHCS

Sec: 8

Twp: 10S

Rge: 26W

Elevation

K.B. 2604

D.F. 2595

G.L. 2595

Permanent Datum Ground Level Elevation 2595  
Log Measured From Kelly Bushing 9 Ft. Above Perm. Datum  
Drilling Measured From Kelly Bushing

Date 9/4/2012

Run Number Two

Depth Driller 4120

Depth Logger 4122

Bottom Logged Interval 4121

Top Log Interval 3500

Casing Driller 8.625 @ 263

Casing Logger 259

Bit Size 7.875

Type Fluid in Hole Chemical

Salinity, ppm CL 3000

Density / Viscosity 9.3 49

pH / Fluid Loss 9.5 8.4

Source of Sample Flowline

Rm @ Meas. Temp 0.60 @ 85

Rmf @ Meas. Temp 0.45 @ 85

Rmc @ Meas. Temp 0.81 @ 85

Source of Rmf / Rmc Charts

Rm @ BHT 0.43 @ 119

Operating Rig Time 5 Hours

Max Rec. Temp. F 119

Equipment Number 91

Location Hays

Recorded By D. Schmidt

Witnessed By Kevin Howard

<<< Fold Here >>>

All interpretations are opinions based on inferences from electrical or other measurements and we cannot and do not guarantee the accuracy or correctness of any interpretation, and we shall not, except in the case of gross or willful negligence on our part, be liable or responsible for any loss, costs, damages, or expenses incurred or sustained by anyone resulting from any interpretation made by any of our officers, agents or employees. These interpretations are also subject to our general terms and conditions set out in our current Price Schedule.

### Comments

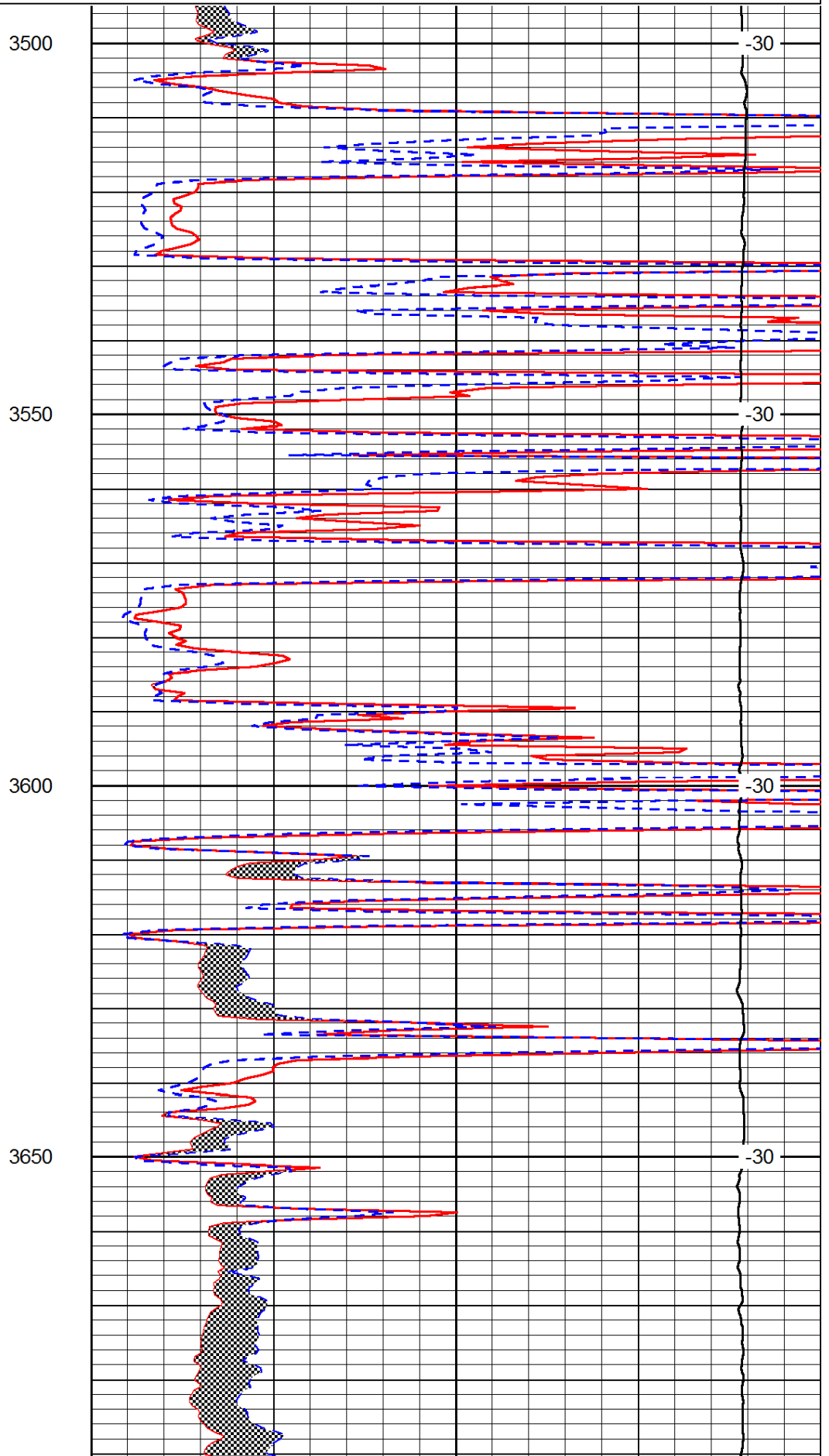
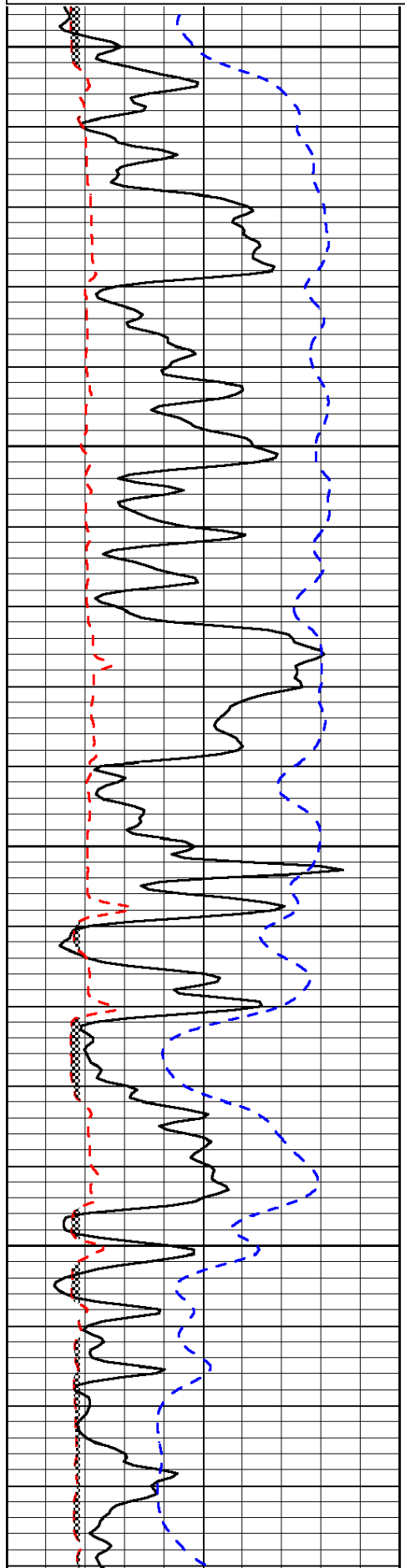
Thank you for using Pioneer Energy Services  
www.pioneerenergy.com  
785 625 3858  
I-70 & Quinter,  
9 North, 1 West, 1/2 North,  
East into

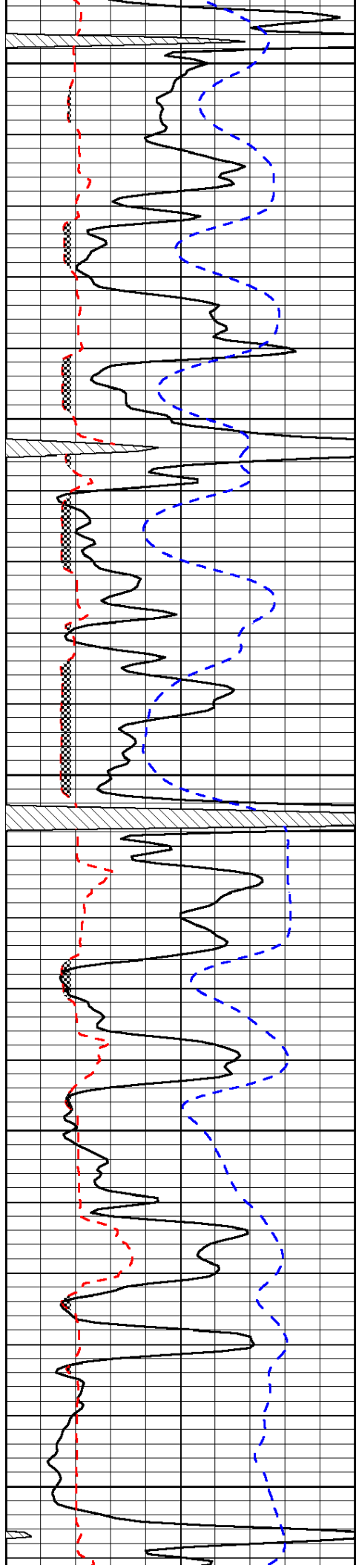
Database File: c:\warrior\data\culbreath\_coburn #3-8\culbreath\_090412hd.db  
Dataset Pathname: dil\culstack  
Presentation Format: micro  
Dataset Creation: Tue Sep 04 18:28:05 2012  
Charted by: Depth in Feet scaled 1:240

0	Gamma Ray	150
6	Micro Log Caliper (GAPI)	16
-200	SP (mV)	0

0	Micro Inverse 1 X 1	40
0	Micro Normal 2"	40
15000	Line Weight	0

LSPD





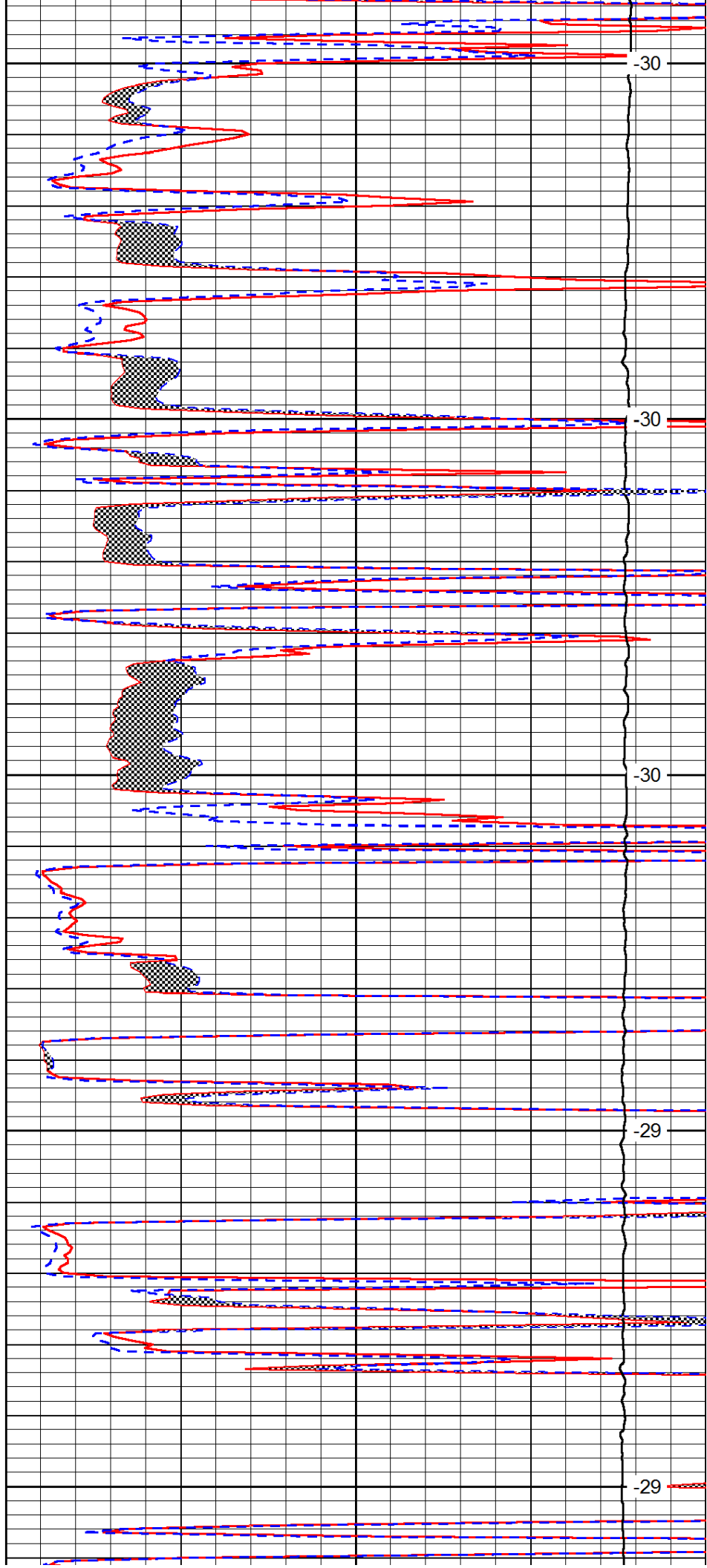
3700

3750

3800

3850

3900



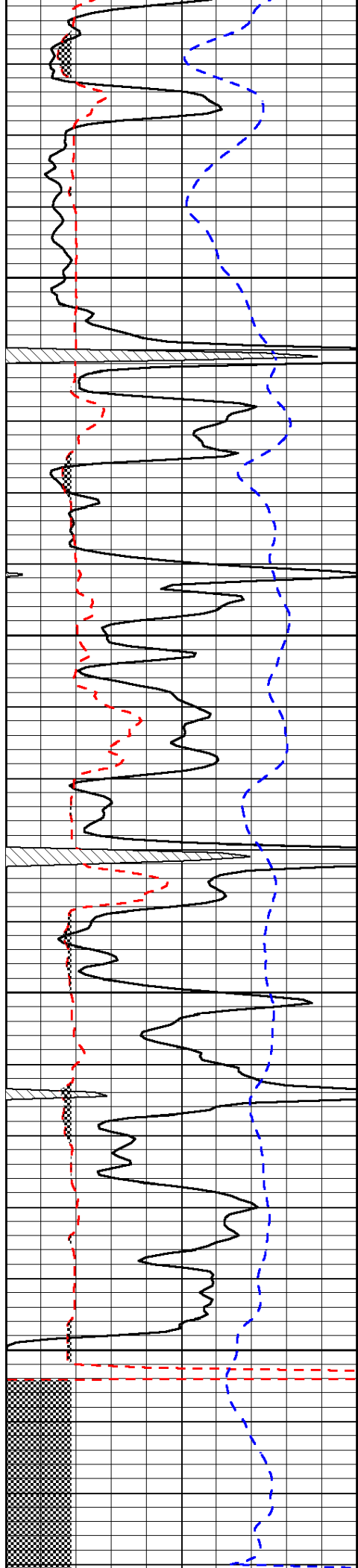
-30

-30

-30

-29

-29

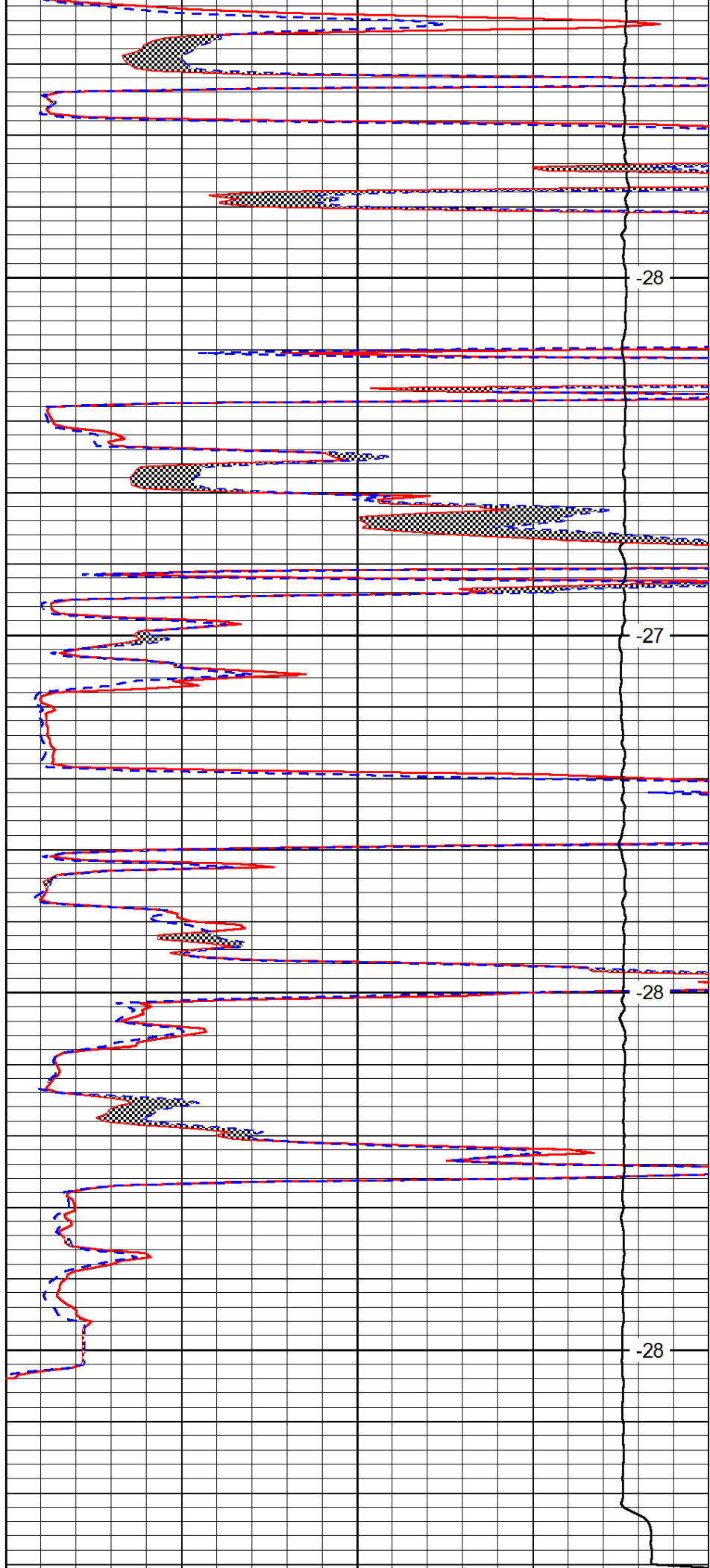


3950

4000

4050

4100



-28

-27

-28

-28

0	Gamma Ray	150
6	Micro Log Caliper (GAPI)	16
-200	SP (mV)	0

0	Micro Inverse 1 X 1	40
0	Micro Normal 2"	40
15000	Line Weight	0

LSPD
------