



Pioneer Energy Services

Borehole Compensated Sonic Log

15-179-21312-00-00

API No.

Company **Culbreath Oil & Gas Company, Inc.**
 Well **Coburn #3-8**
 Field **Unnamed**
 County **Sheridan** State **Kansas**

Other Services
CNL/CDL
MEL/DIL

Location
1980' FNL & 1320' FWL
Sec: 8 Twp: 10S Rge: 26W

Permanent Datum Ground Level Elevation 2595
 Log Measured From Kelly Bushing 9 Ft. Above Perm. Datum
 Drilling Measured From Kelly Bushing

Elevation
K.B. 2604
D.F. 2595
G.L. 2595

Date	9/4/2012	
Run Number	Two	
Type Log	BHC Sonic	
Depth Driller	4120	
Depth Logger	4122	
Bottom Logged Interval	4111	
Top Logged Interval	250	
Type Fluid In Hole	Chemical	
Salinity, PPM CL	3000	
Density Level	9.3	
	Full	
Max. Rec. Temp. F	119	
Operating Rig Time	5 Hours	
Equipment -- Location	91 Hays	
Recorded By	D. Schmidt	
Witnessed By	Kevin Howard	

Borehole Record

Casing Record

Run No.	Bit	From	To	Size	Wgt.	From	To
1	12.25	00	263	8.625	24#	00	263
2	7.875	263	4120				

<<< Fold Here >>>

All interpretations are opinions based on inferences from electrical or other measurements and we cannot and do not guarantee the accuracy or correctness of any interpretation, and we shall not, except in the case of gross or willful negligence on our part, be liable or responsible for any loss, costs, damages, or expenses incurred or sustained by anyone resulting from any interpretation made by any of our officers, agents or employees. These interpretations are also subject to our general terms and conditions set out in our current Price Schedule.

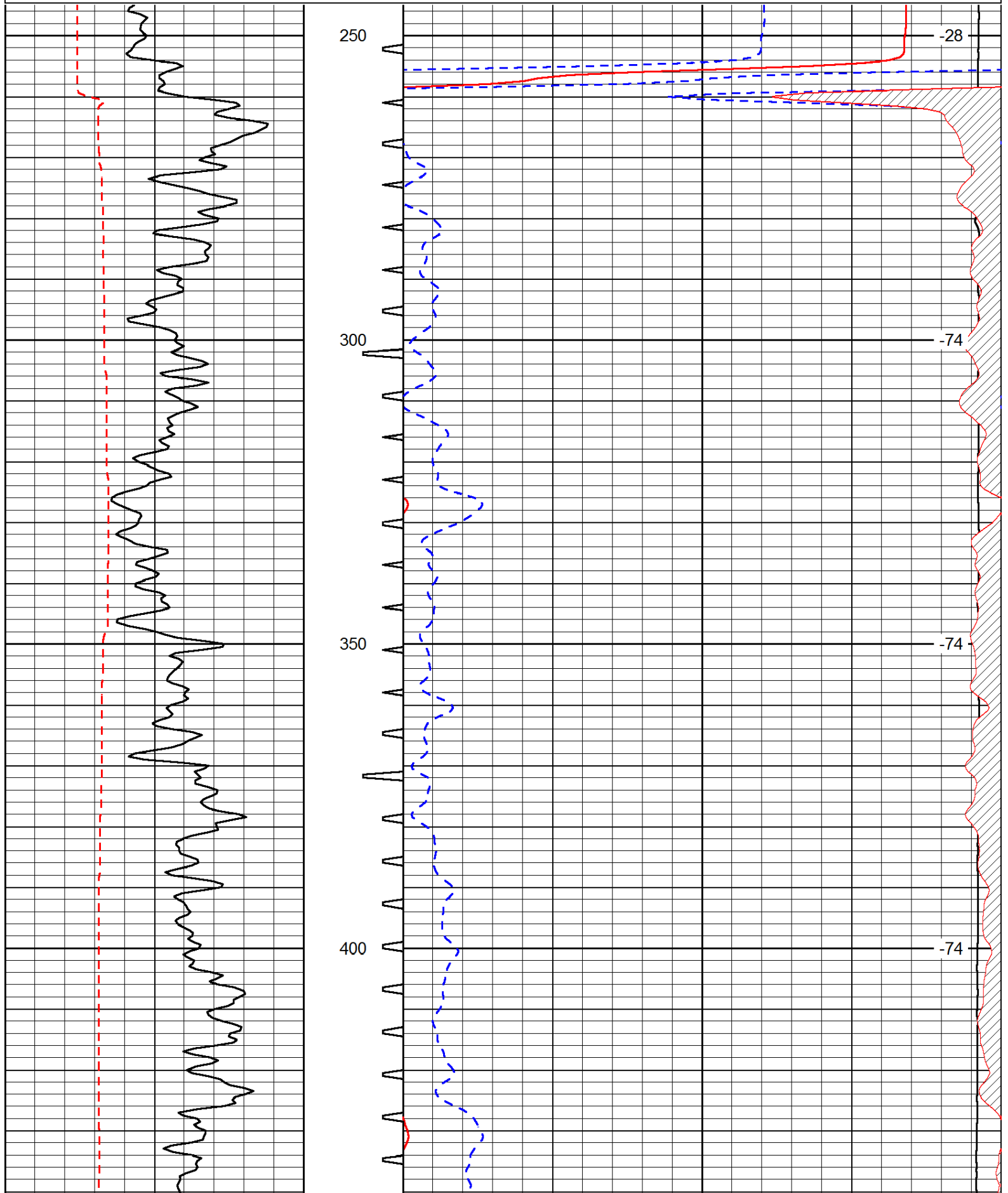
Comments

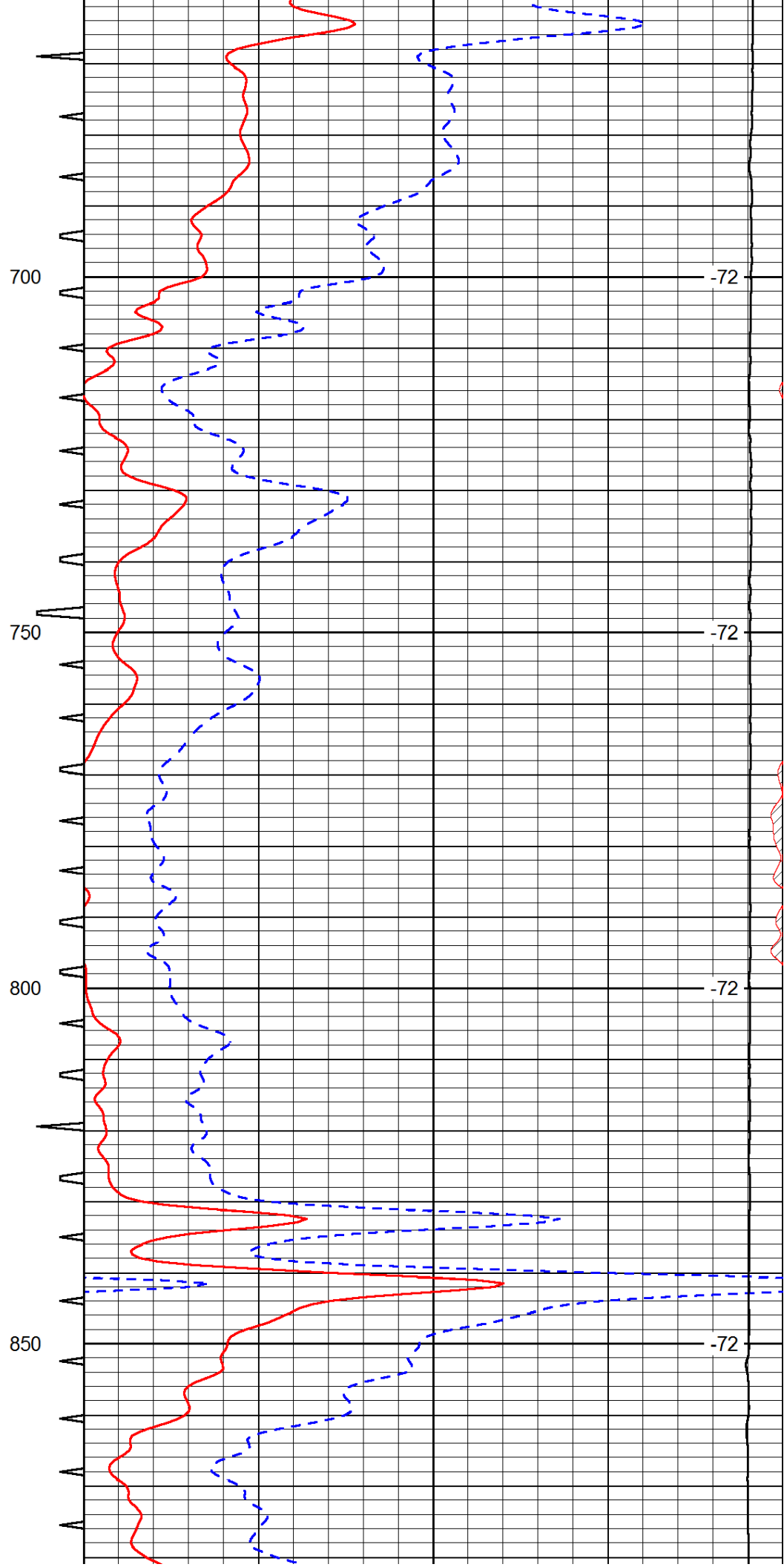
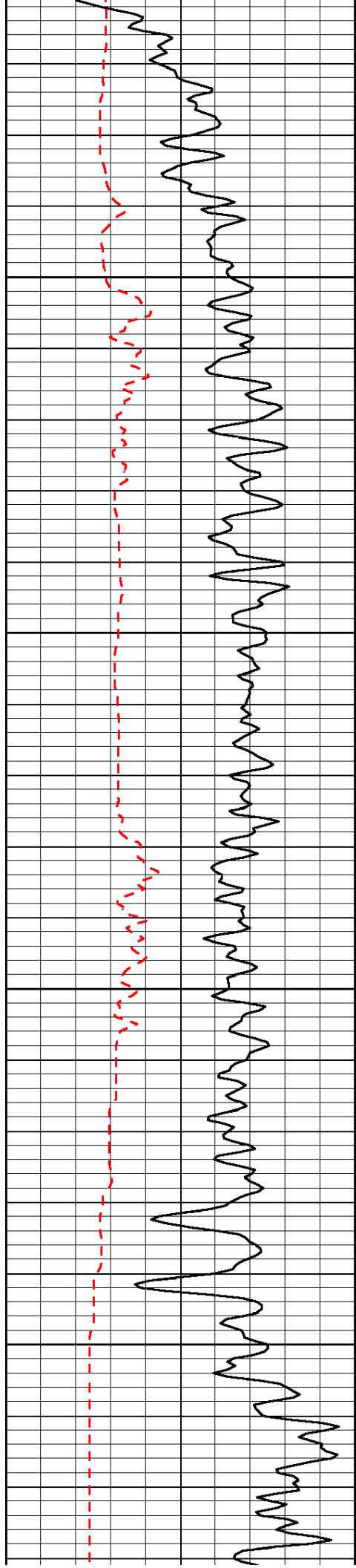
Thank you for using Pioneer Energy Services
 www.pioneerenergy.com
 785 625 3858
 I-70 & Quinter,
 9 North, 1 West, 1/2 North,
 East into

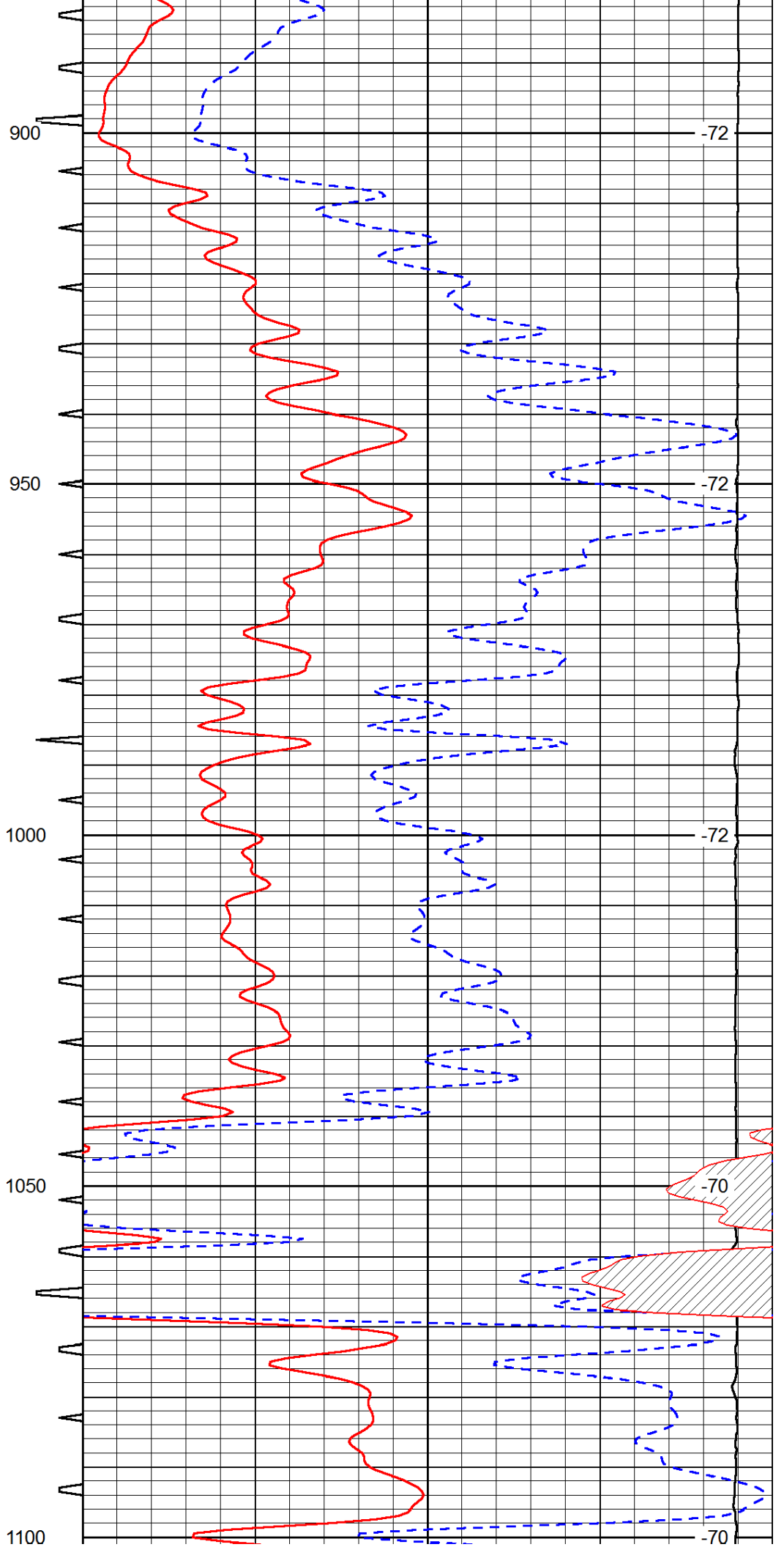
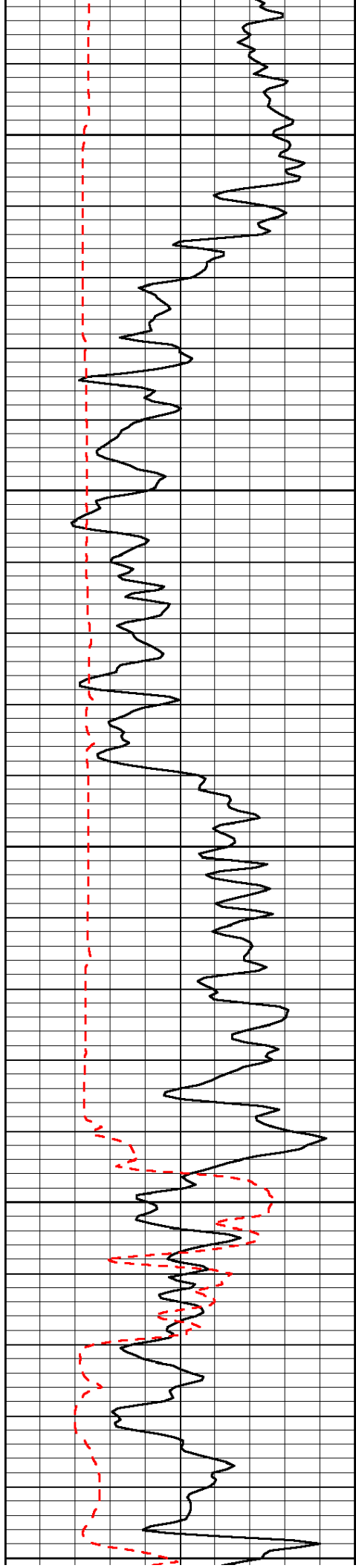
Database File: c:\warrior\data\culbreath_coburn #3-8\culbreath_090412hd.db
 Dataset Pathname: dil\culstack
 Presentation Format: sonic
 Dataset Creation: Tue Sep 04 18:28:05 2012
 Charted by: Depth in Feet scaled 1:240

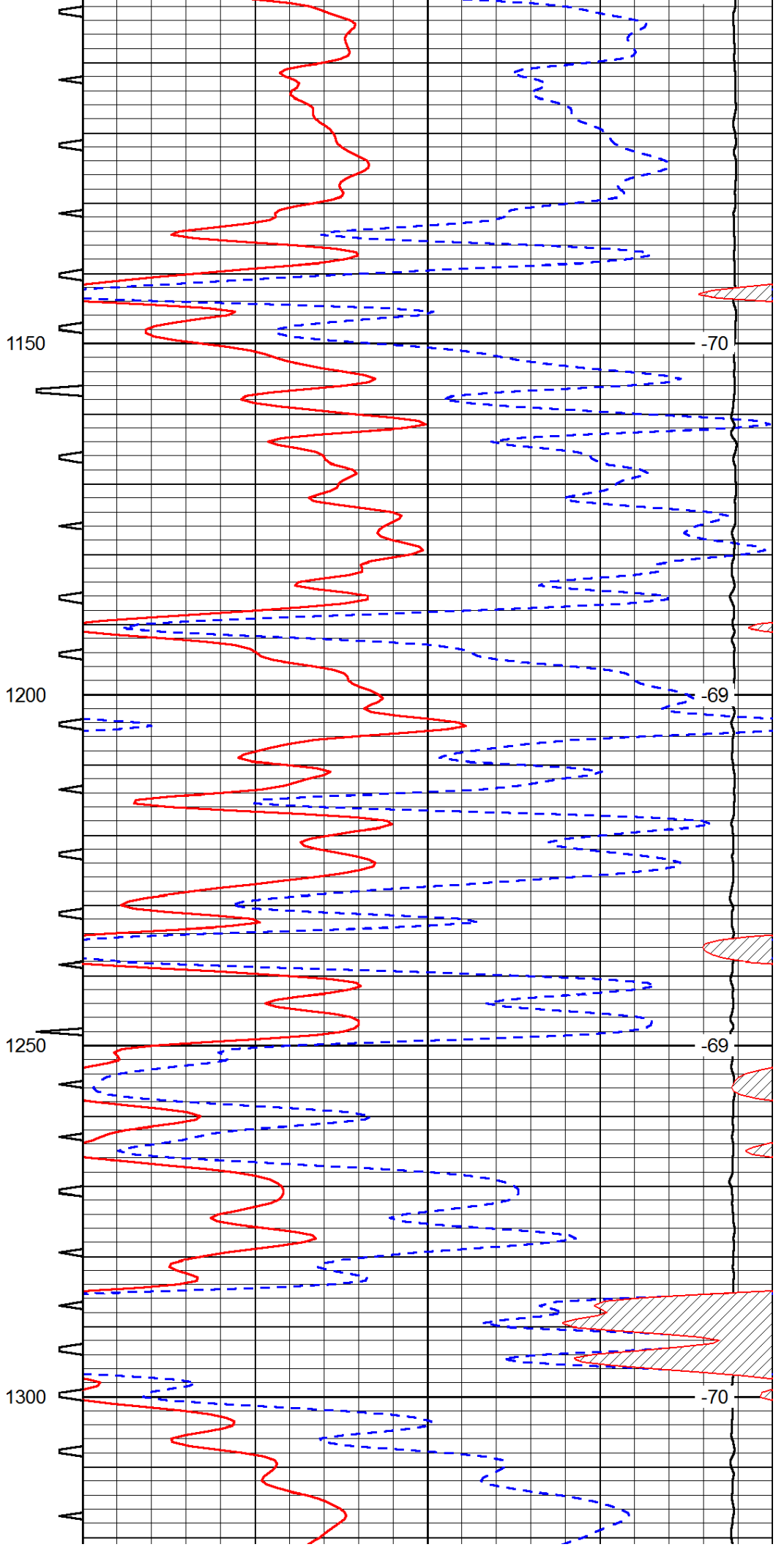
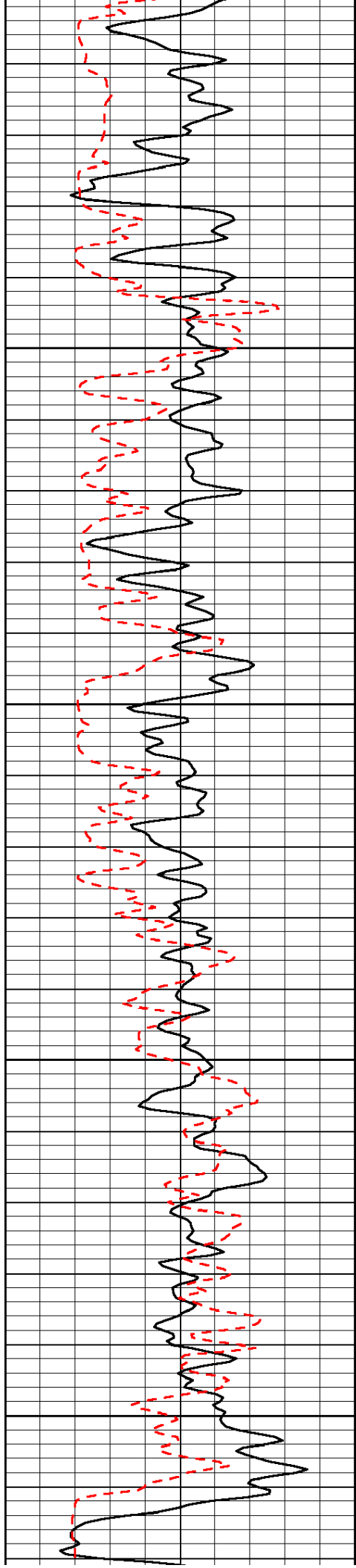
0	Gamma Ray	150	Sonic Int	140	Delta Time (usec/ft)	40
150	Gamma Ray	300	5	0	SPOR	-10
6	Caliper (GAPI)	16		15000	LTEN (lb)	0

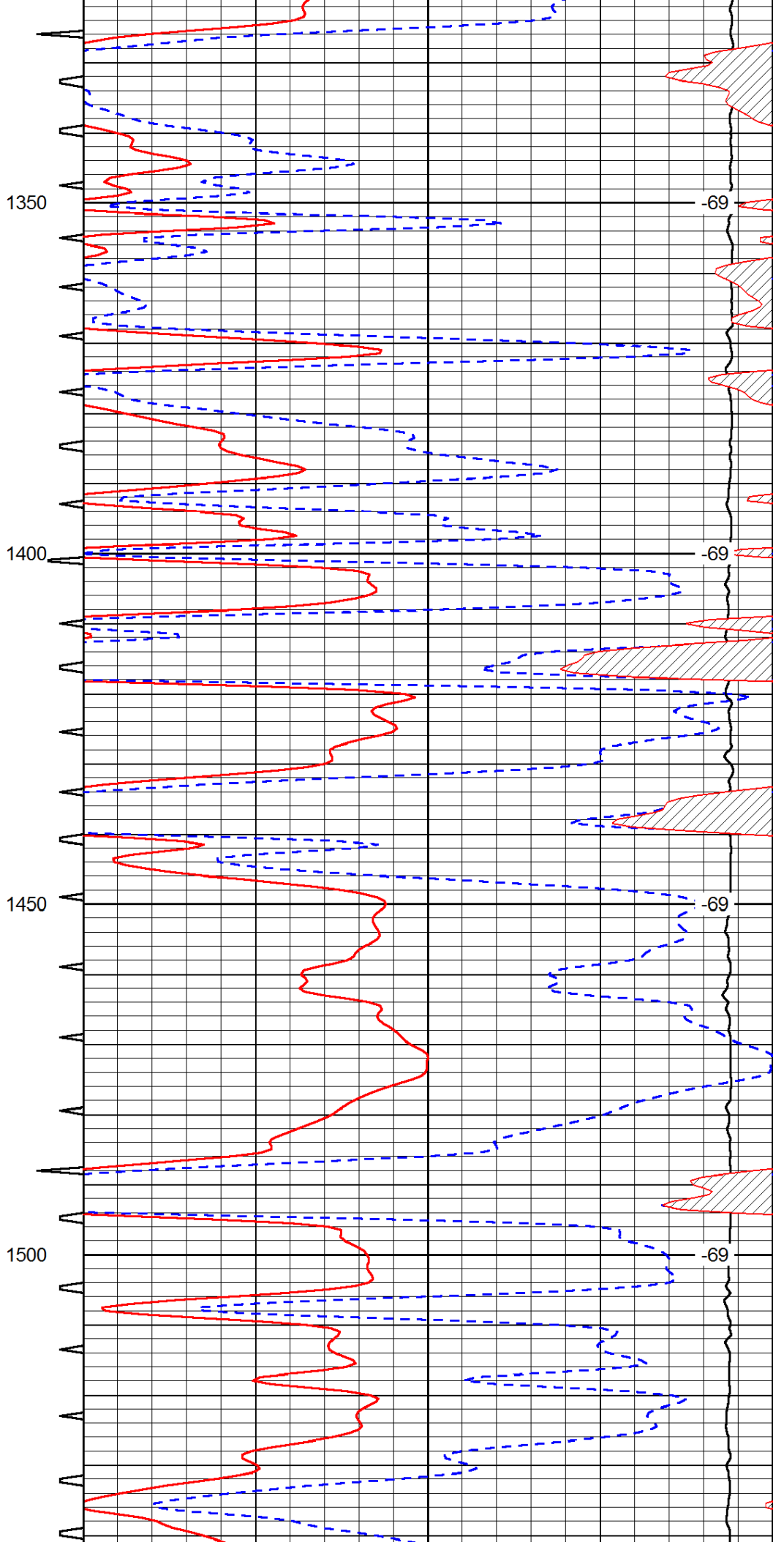
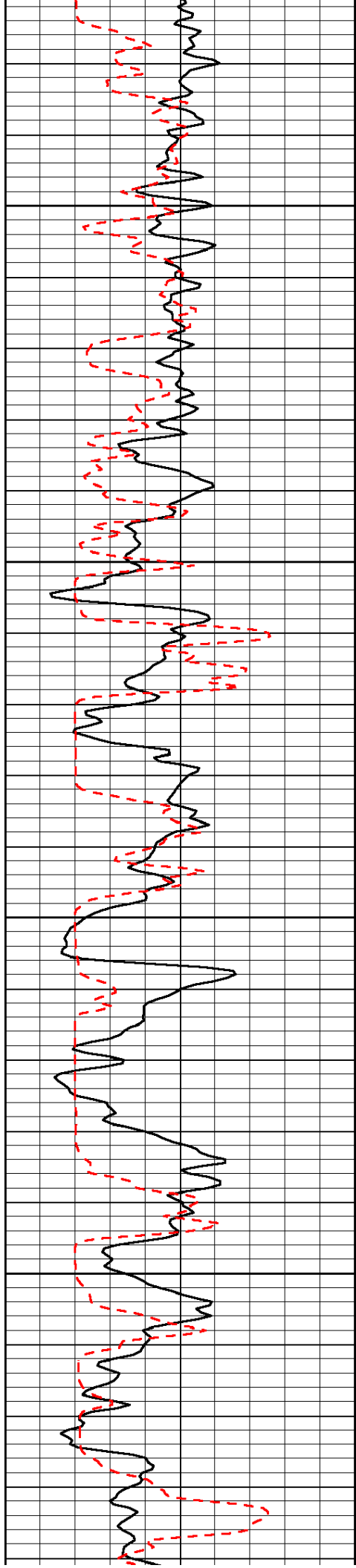
LSPD

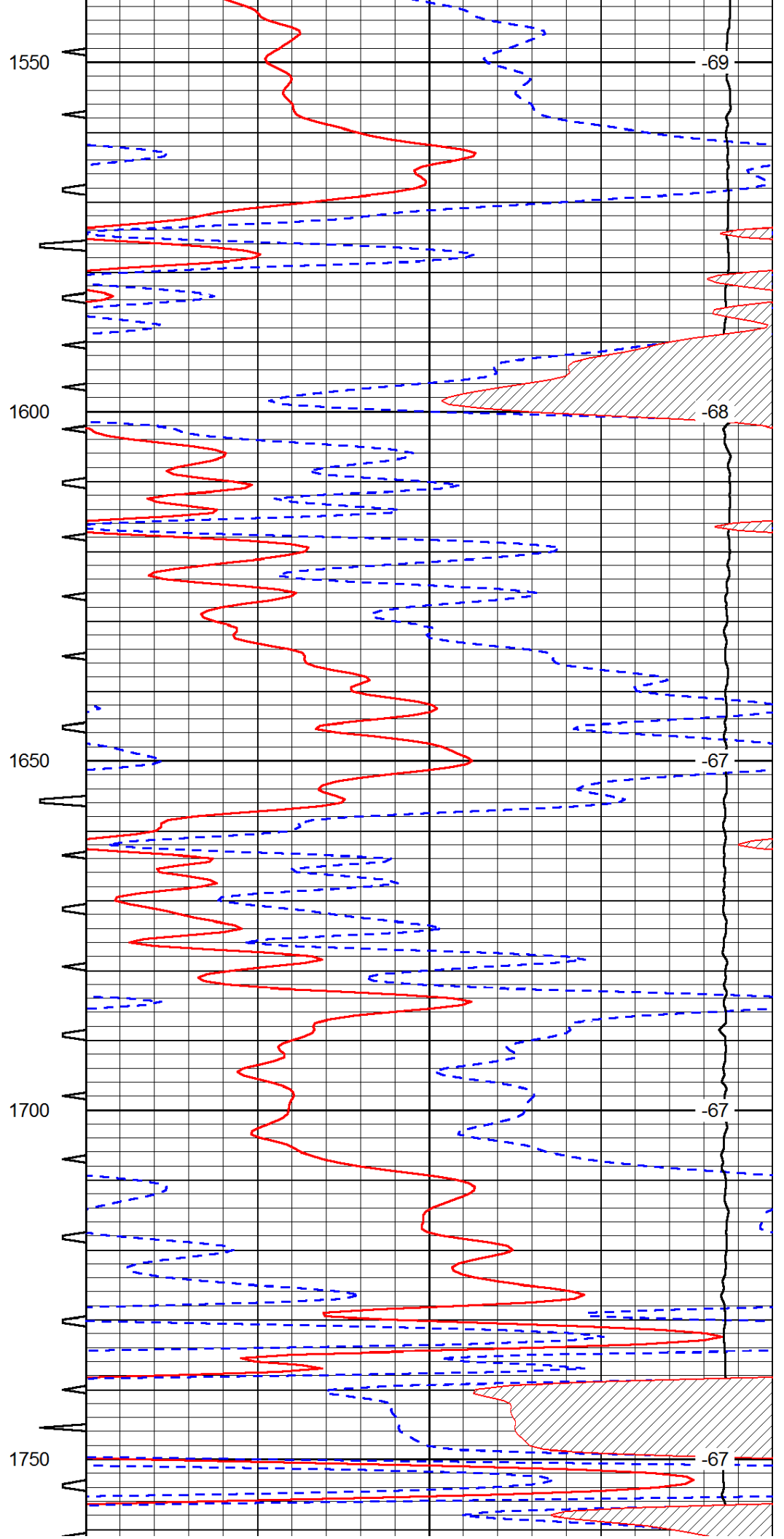
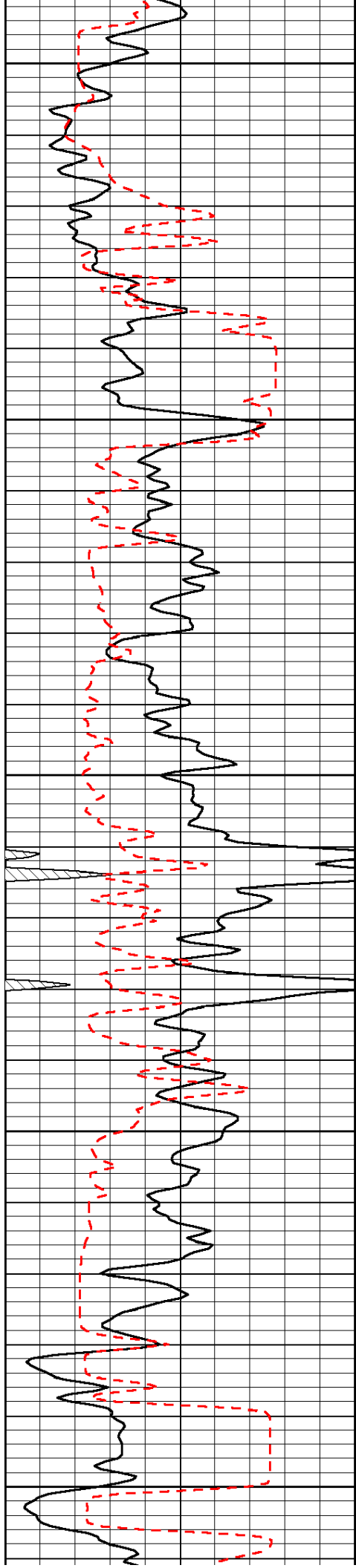


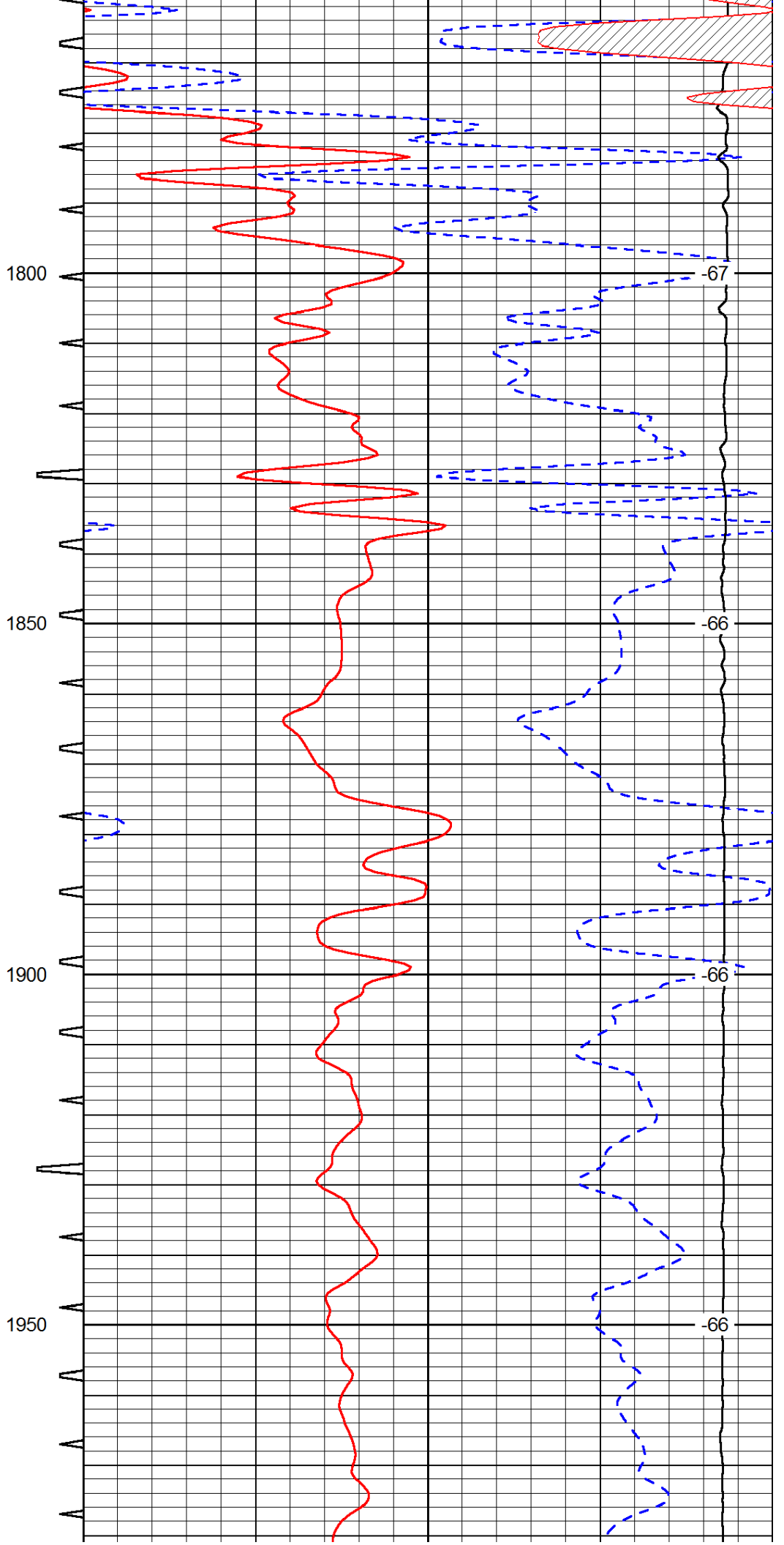
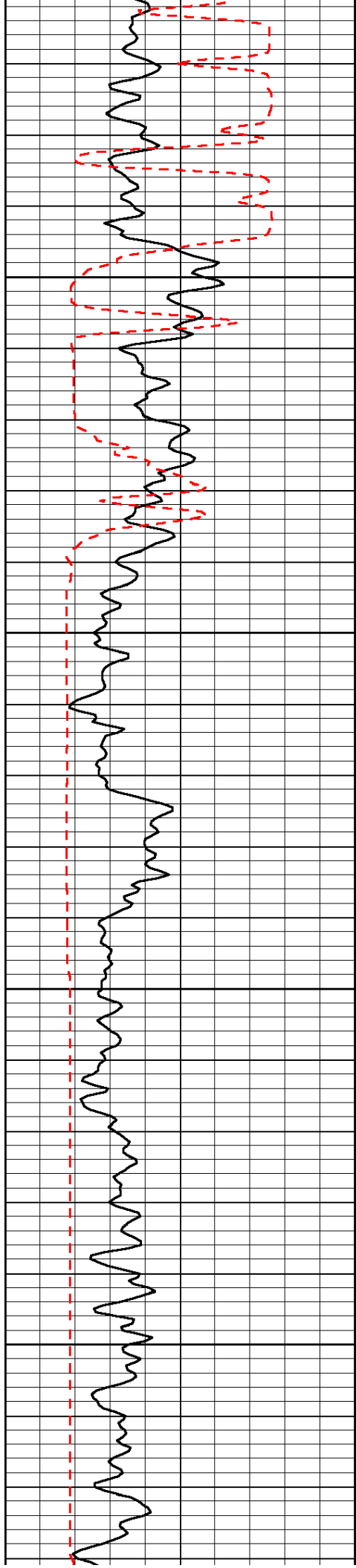


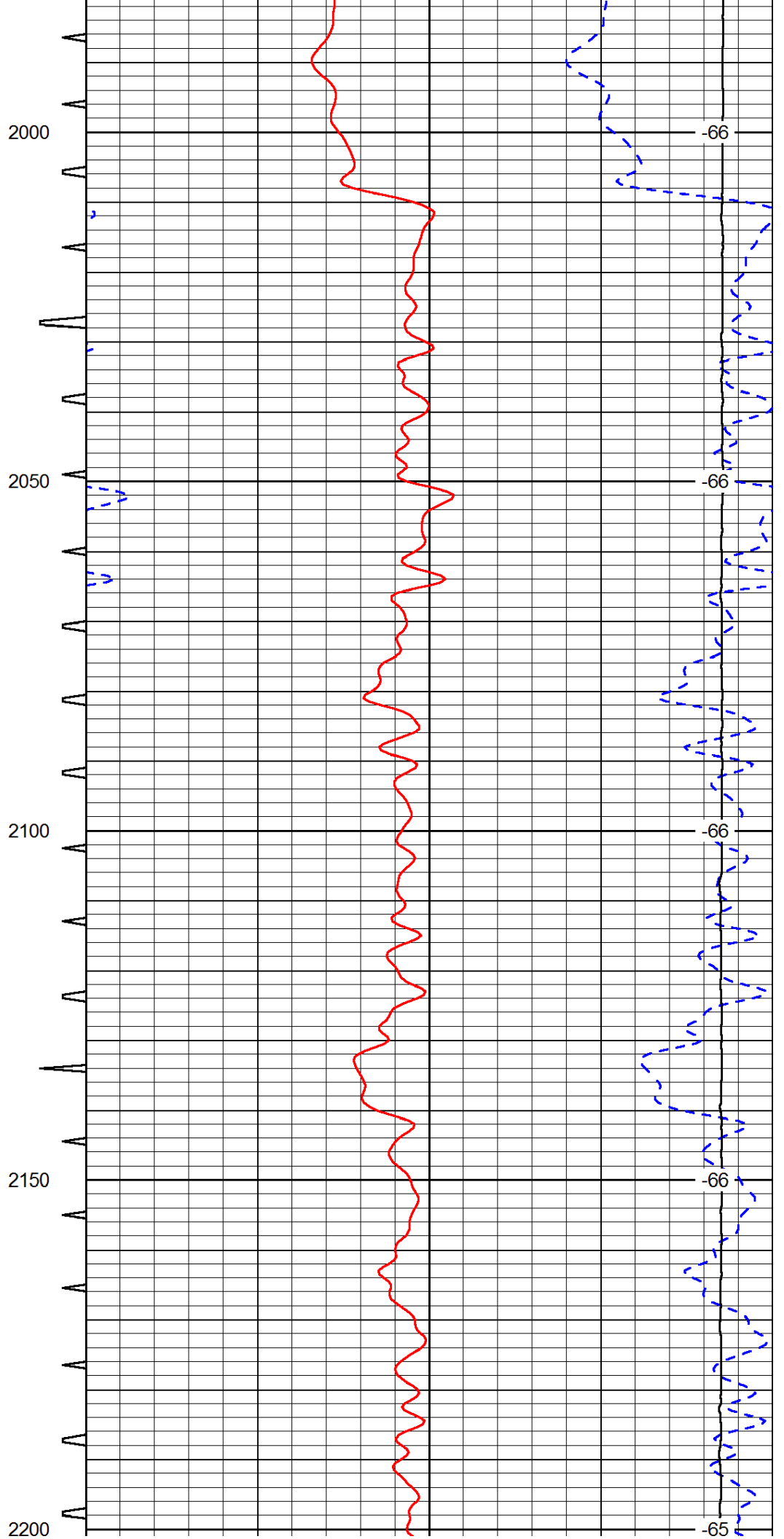
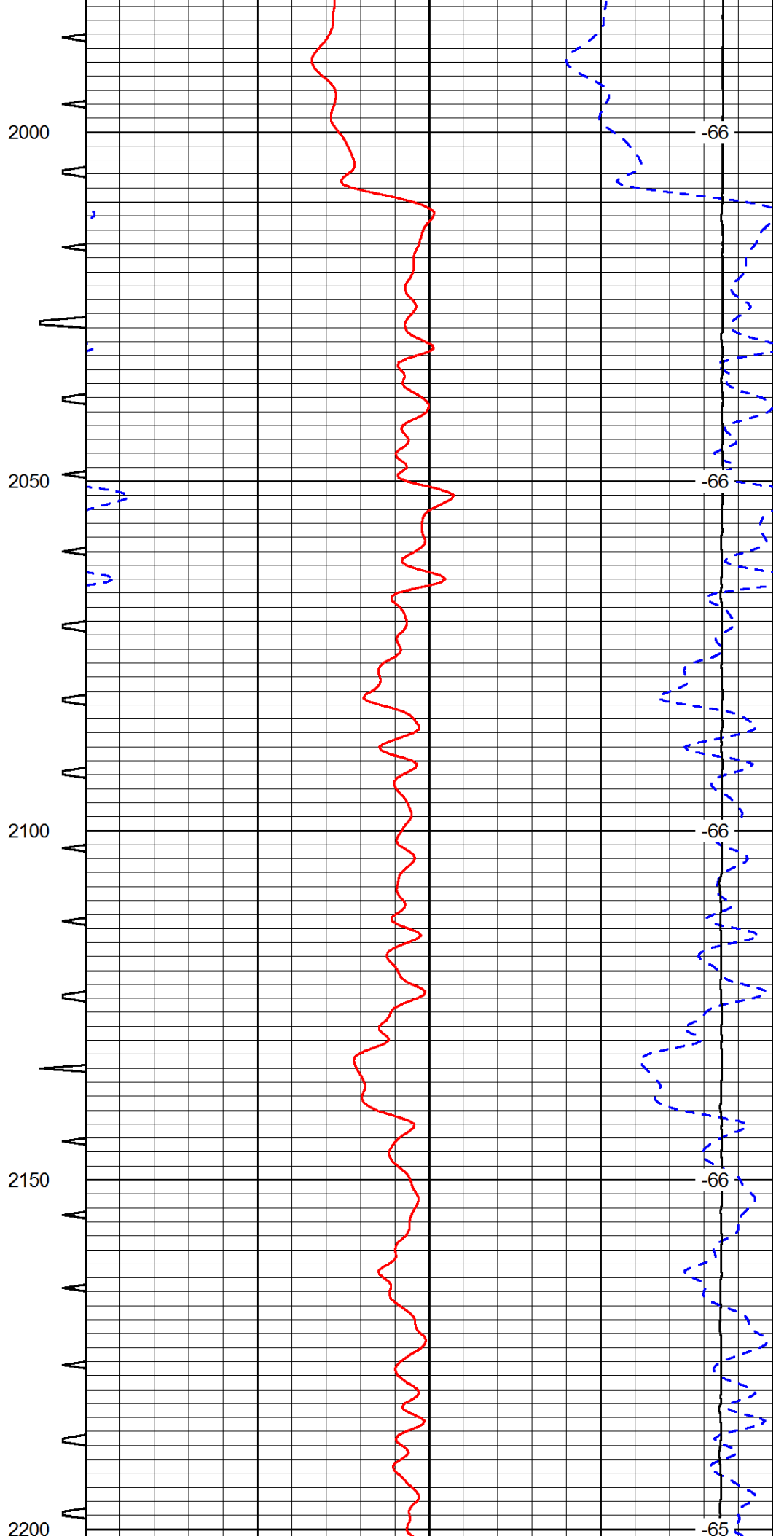
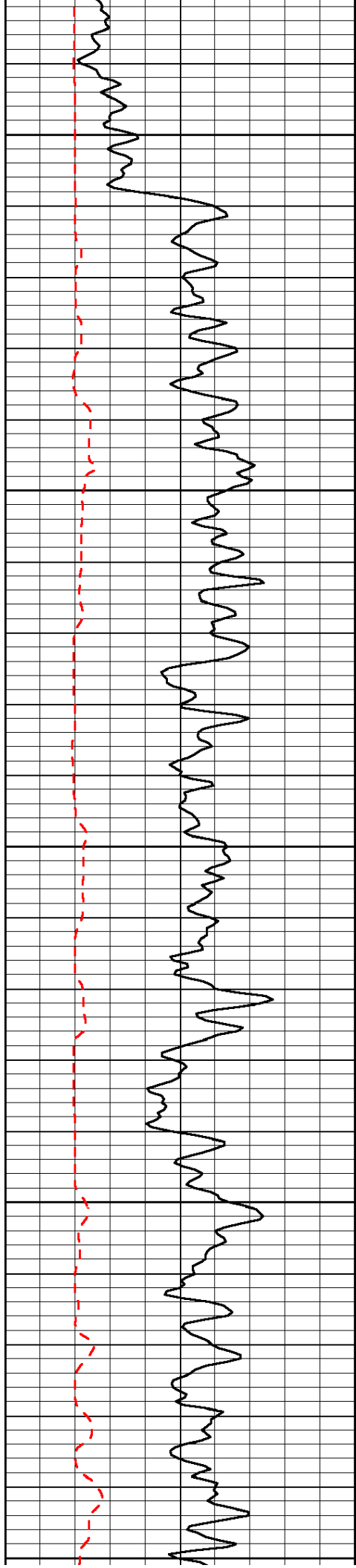


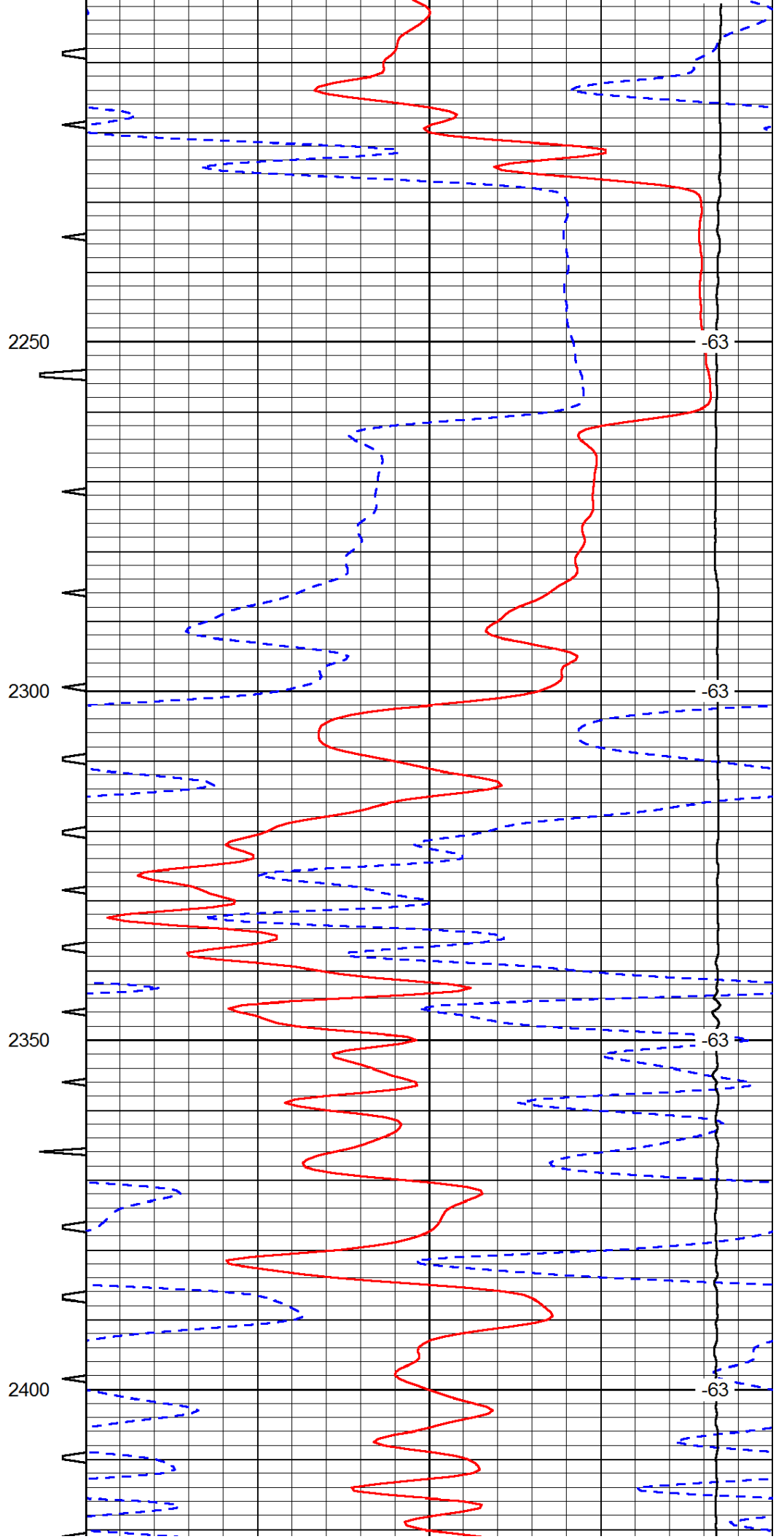
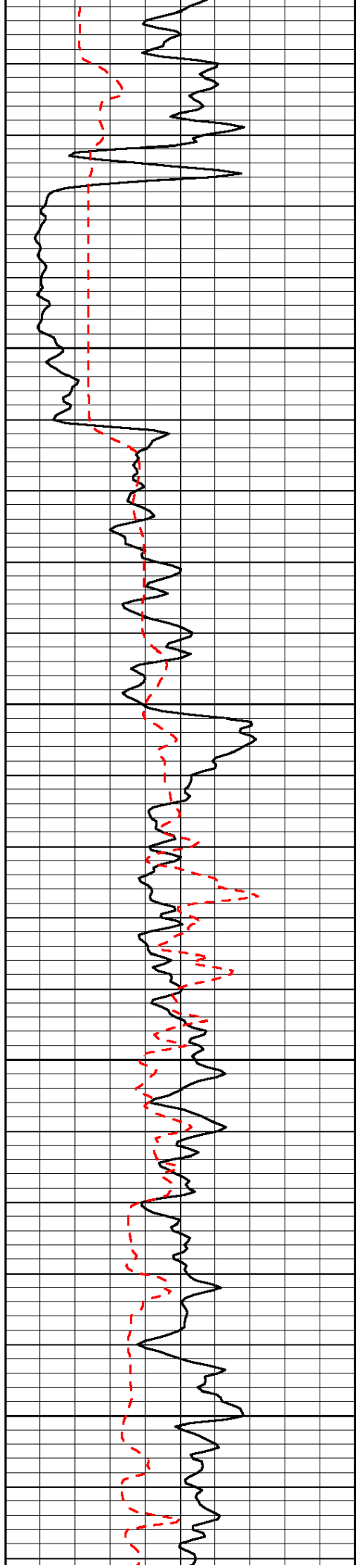


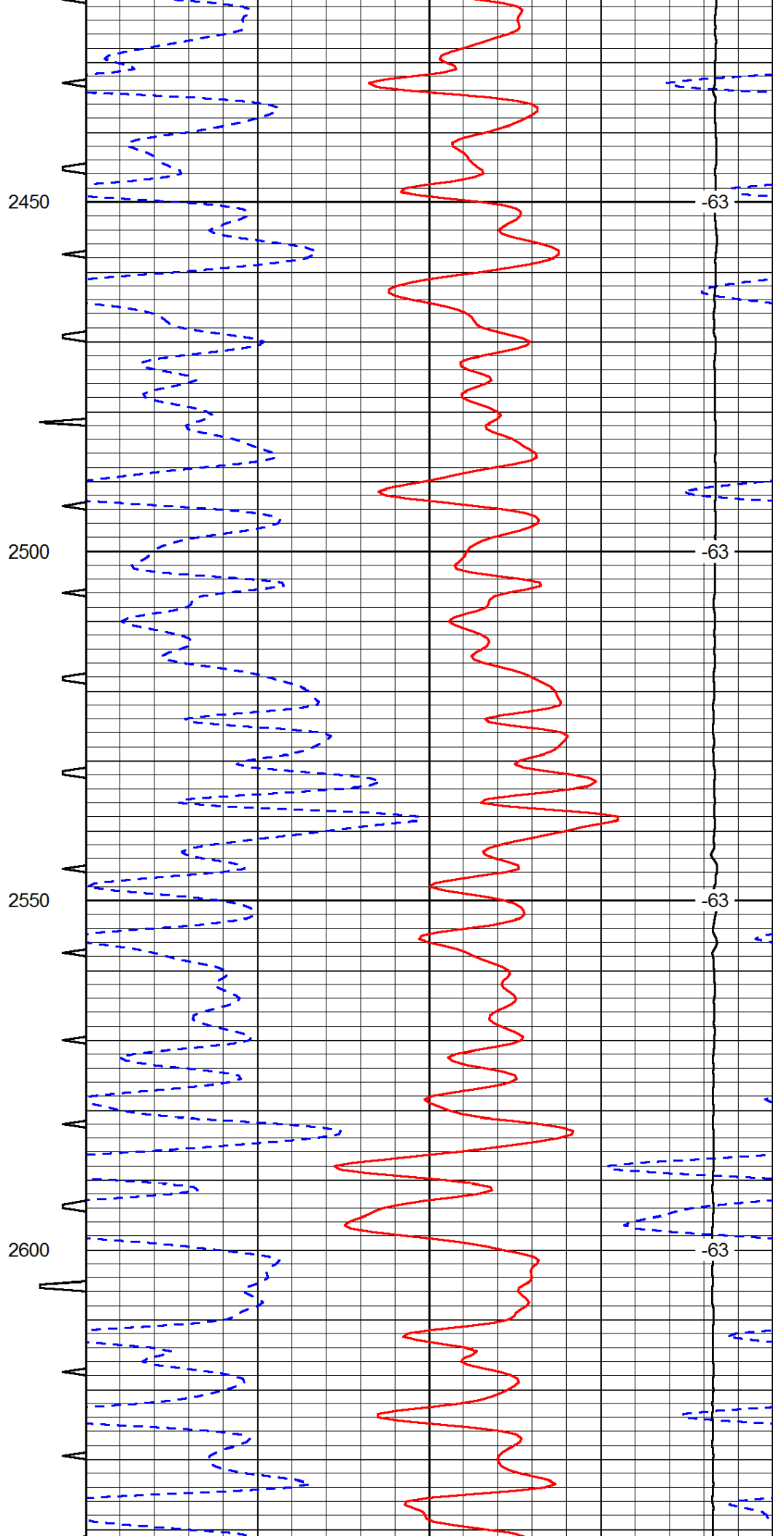
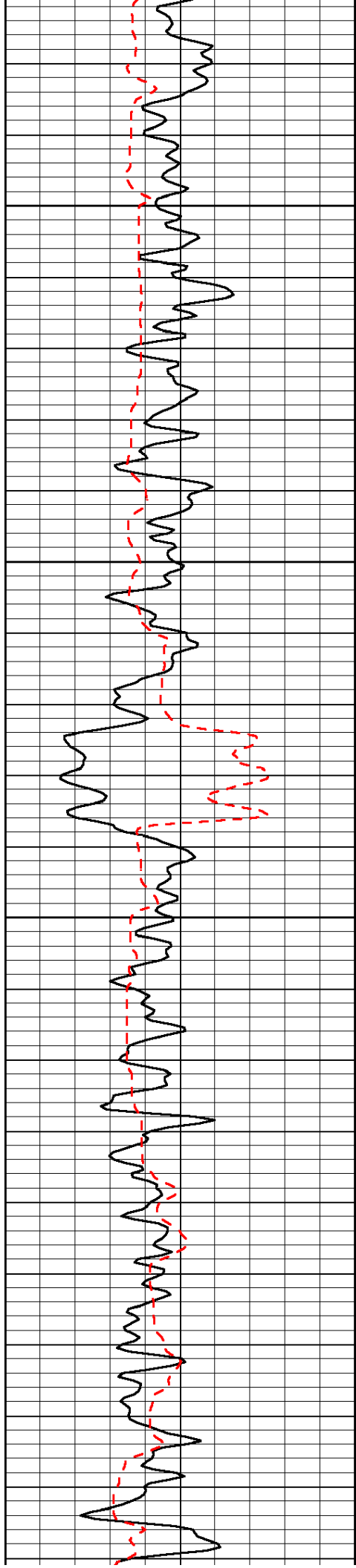


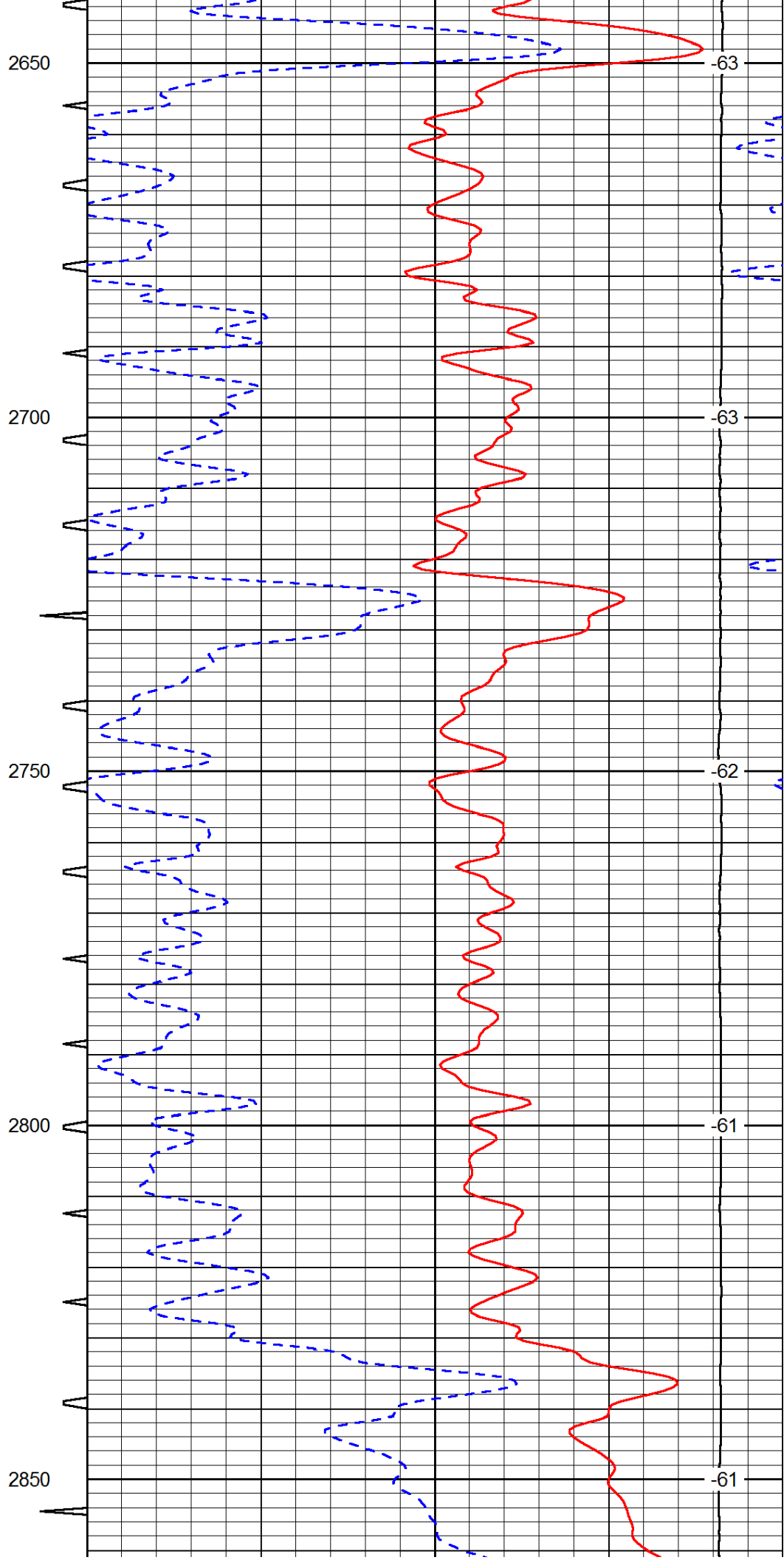
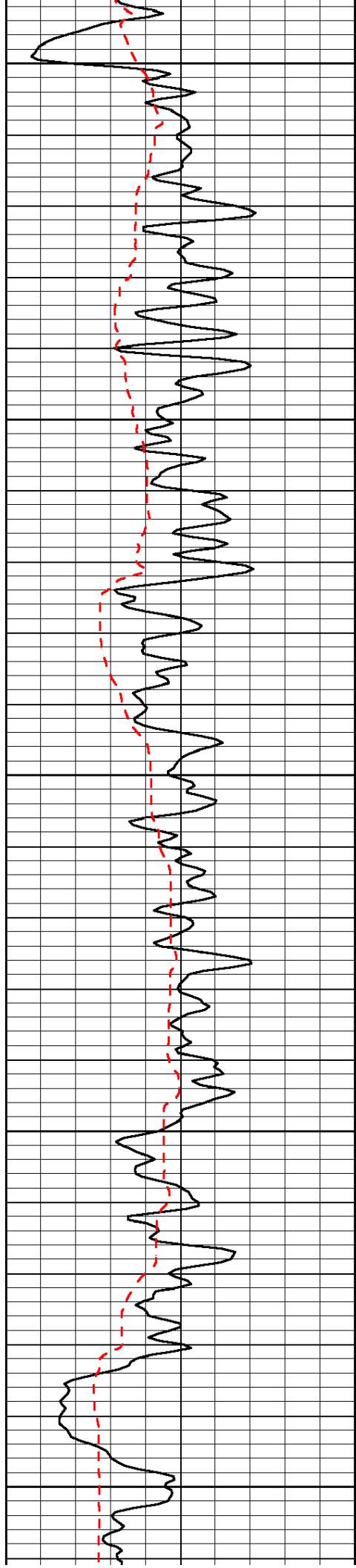


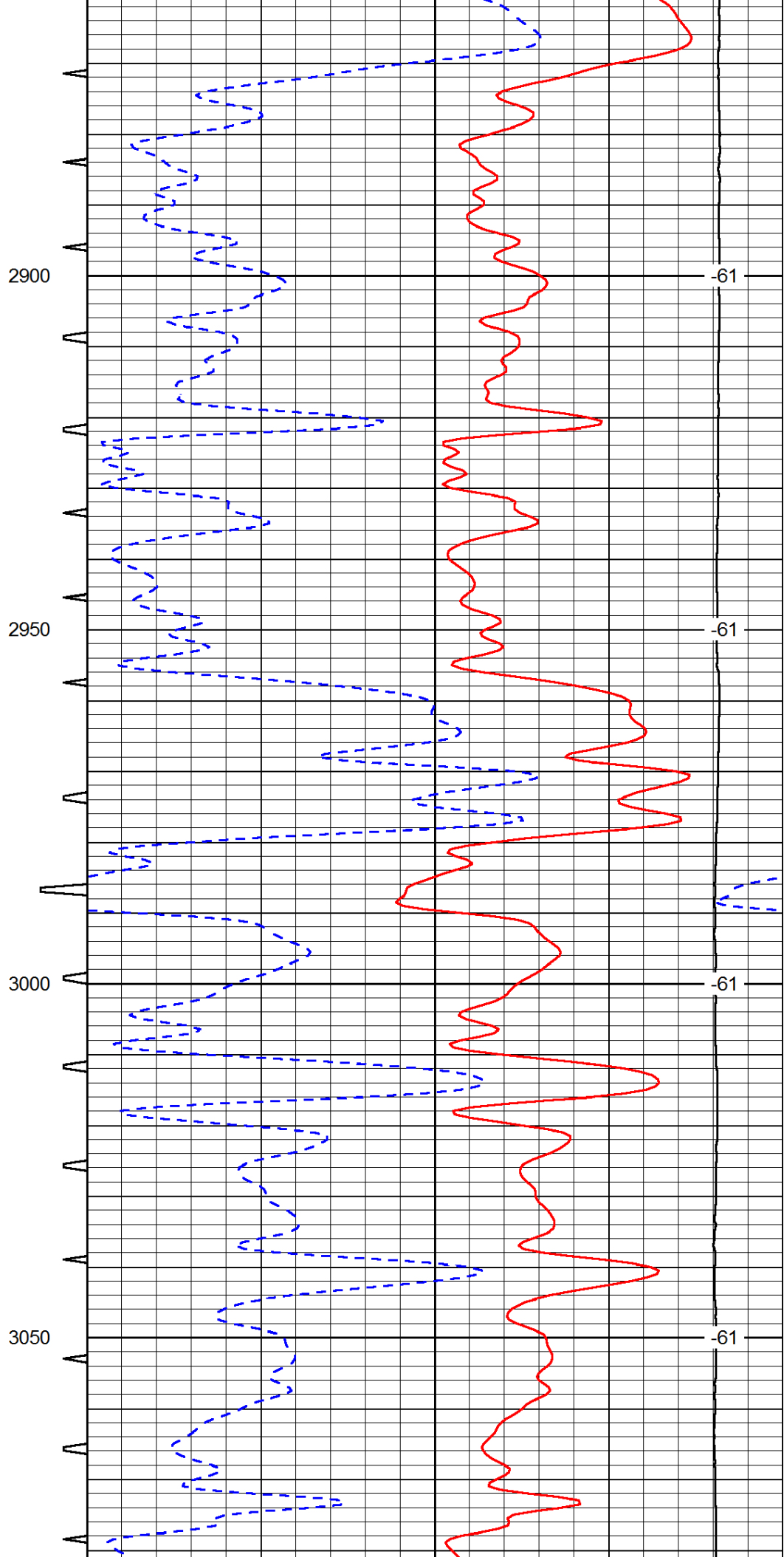
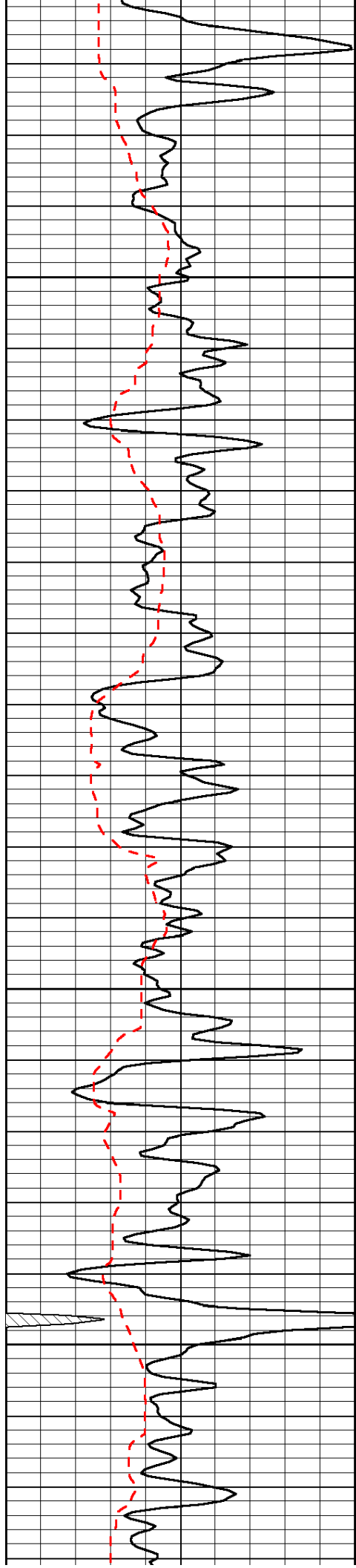


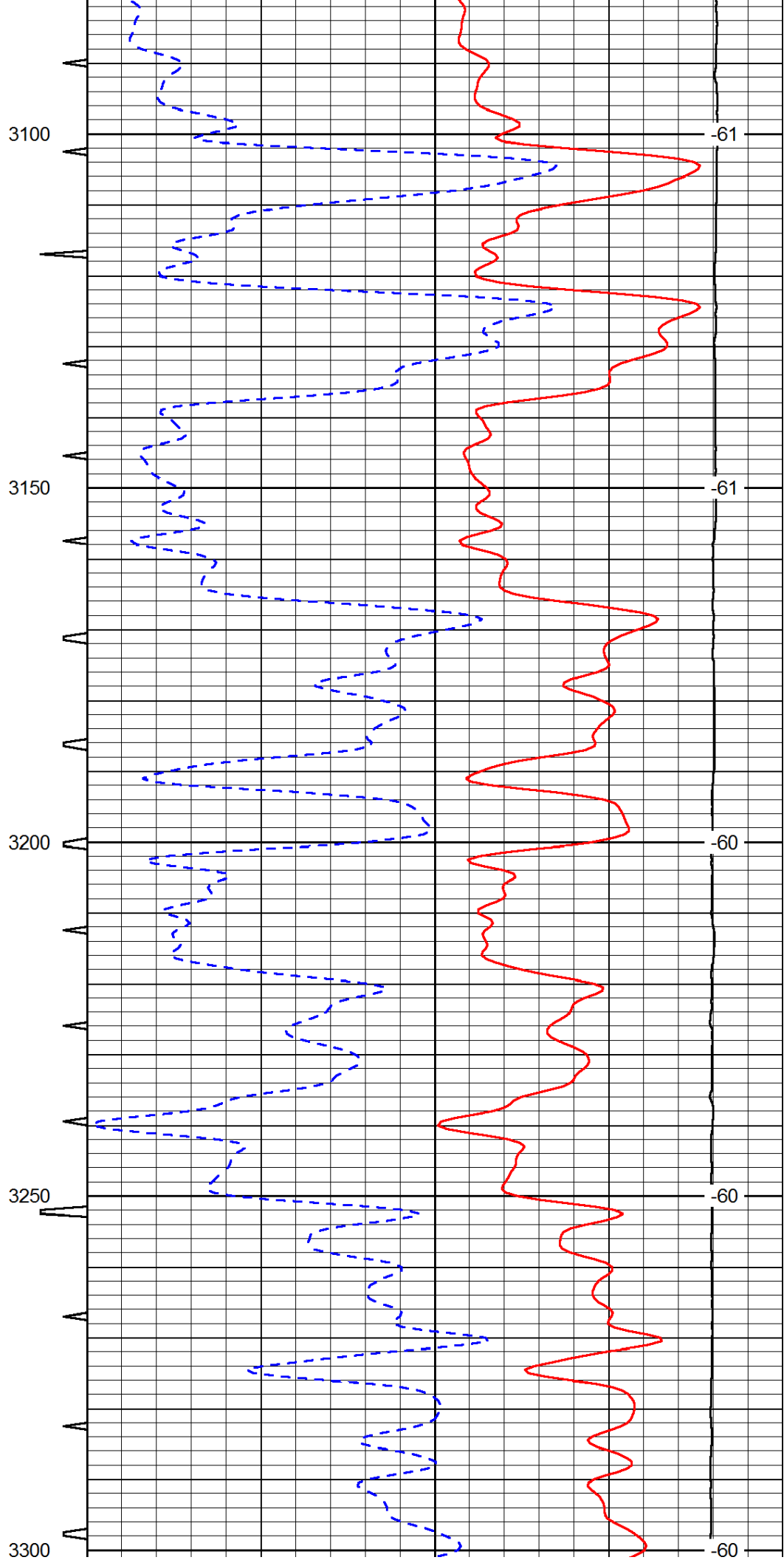
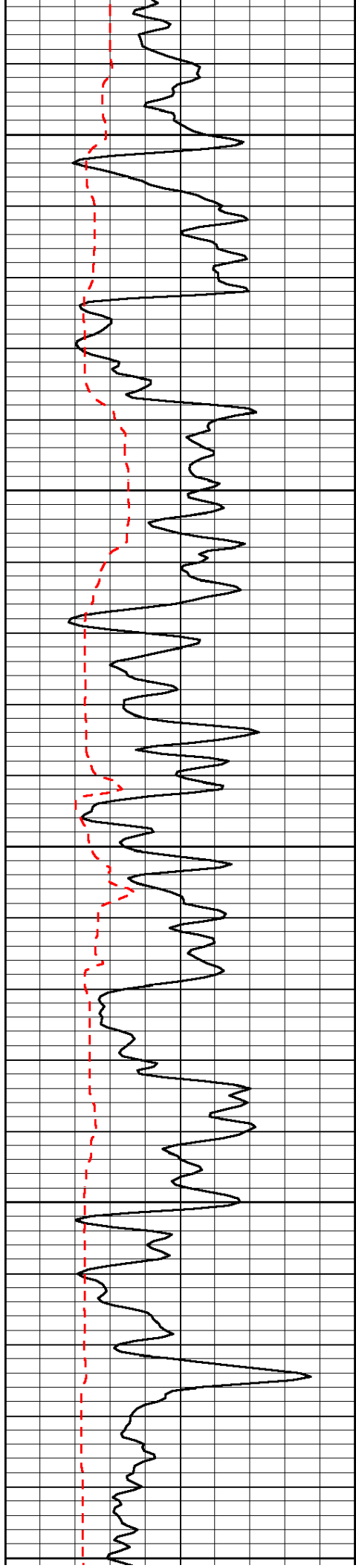


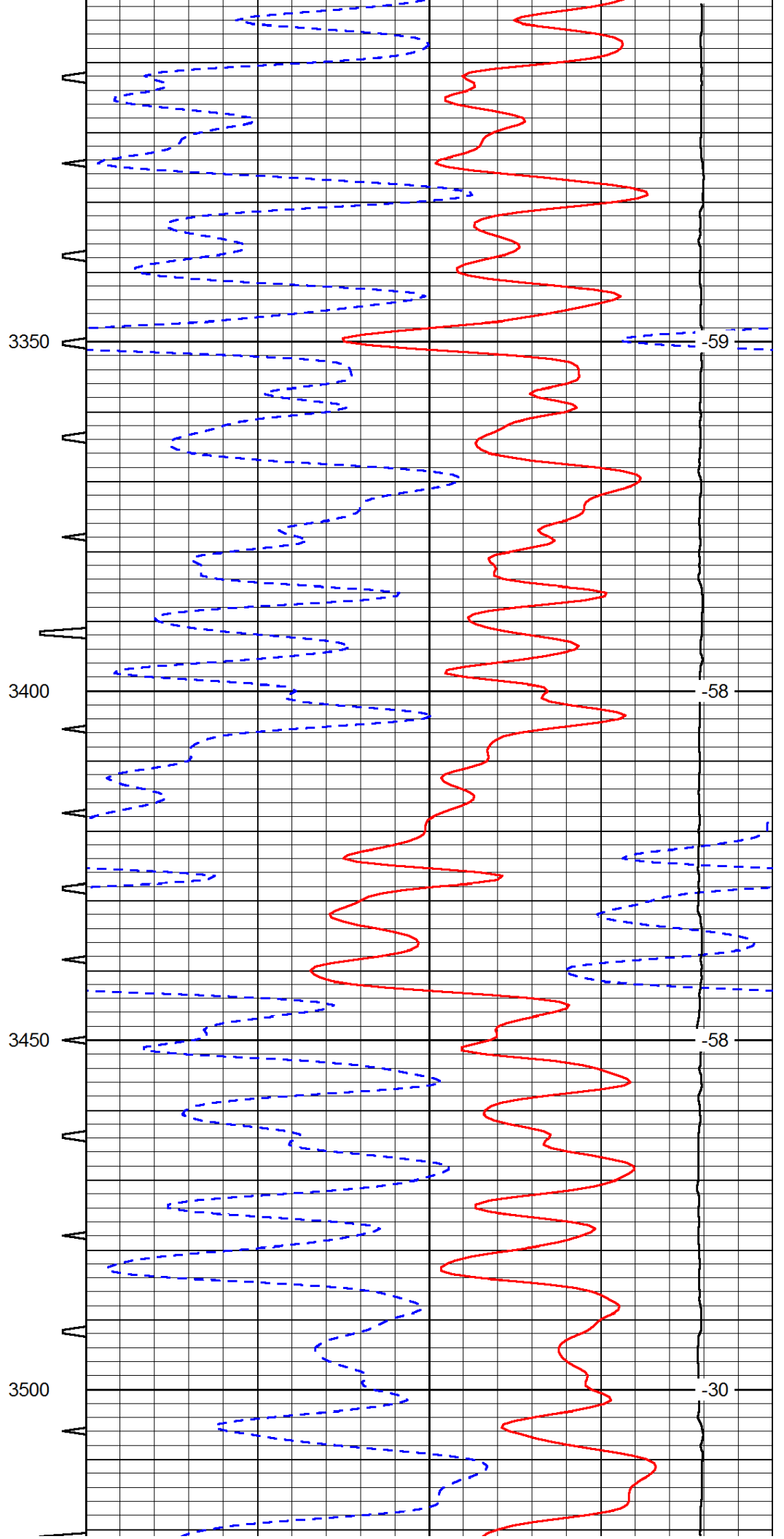
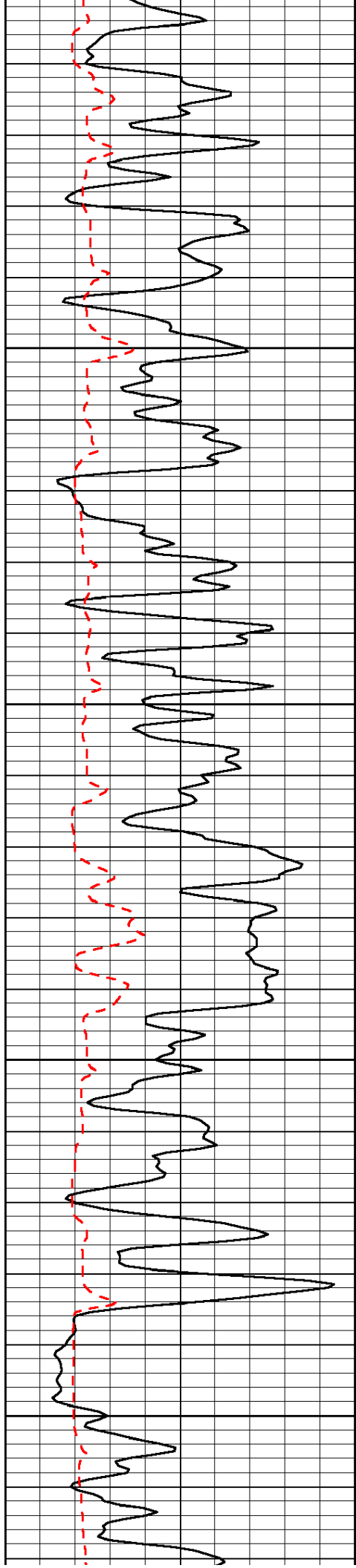


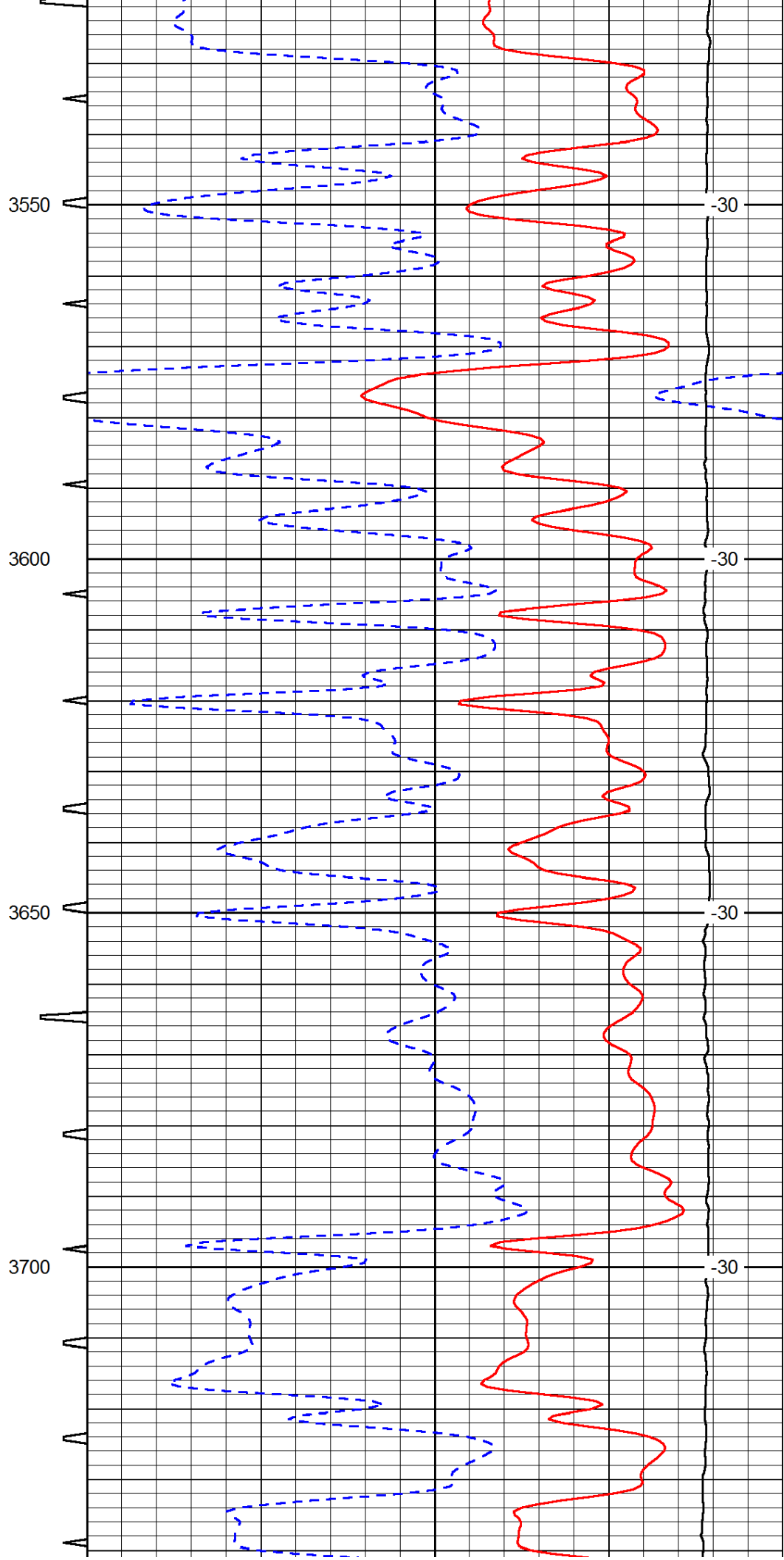
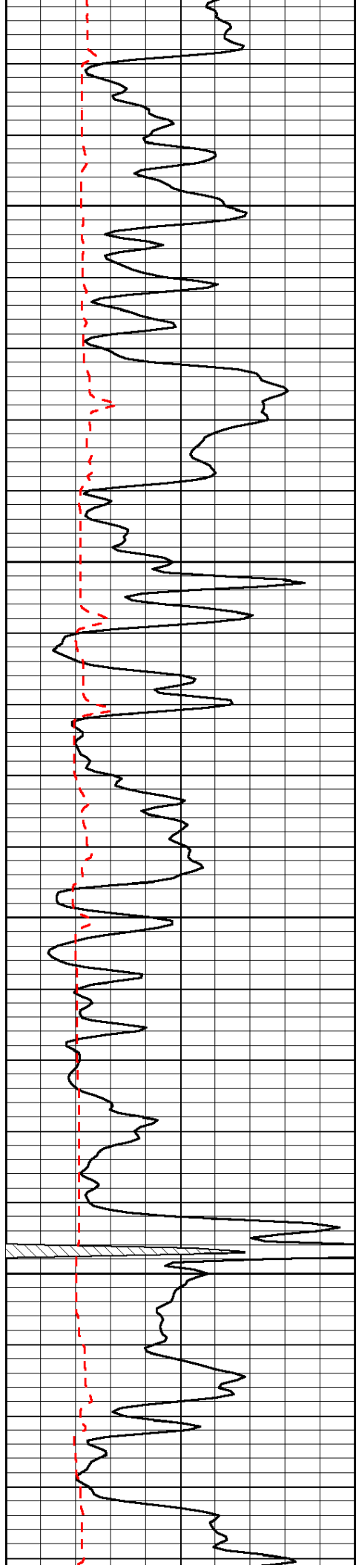


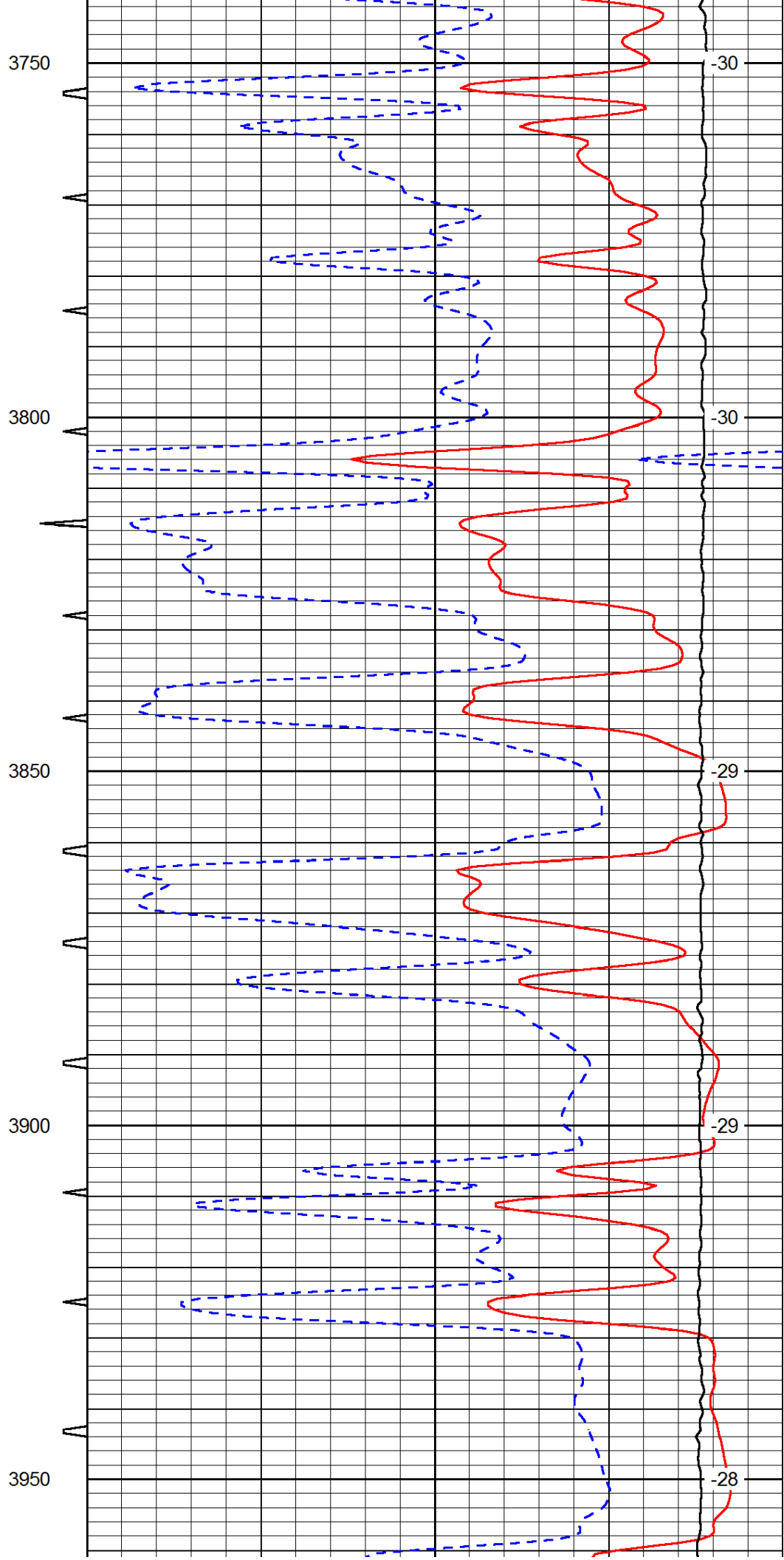
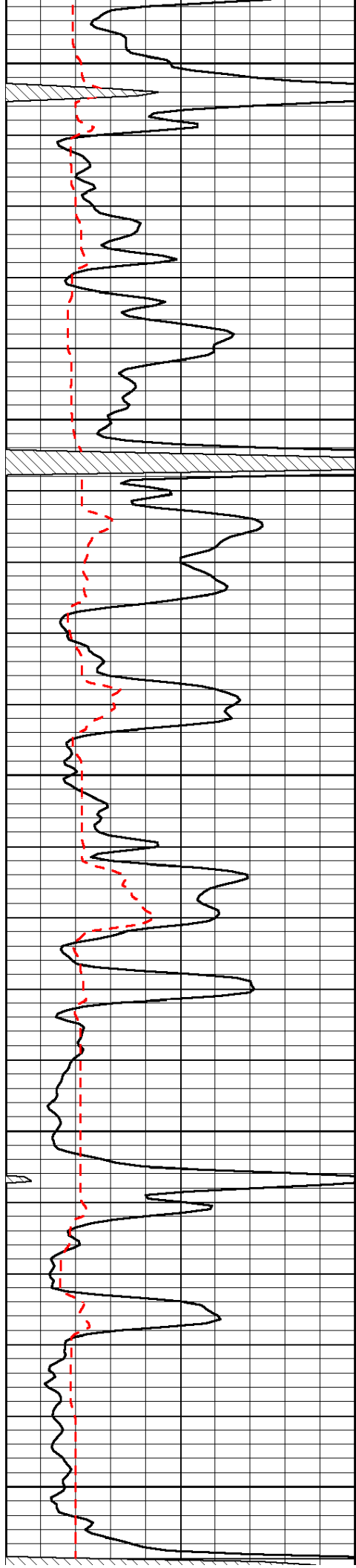


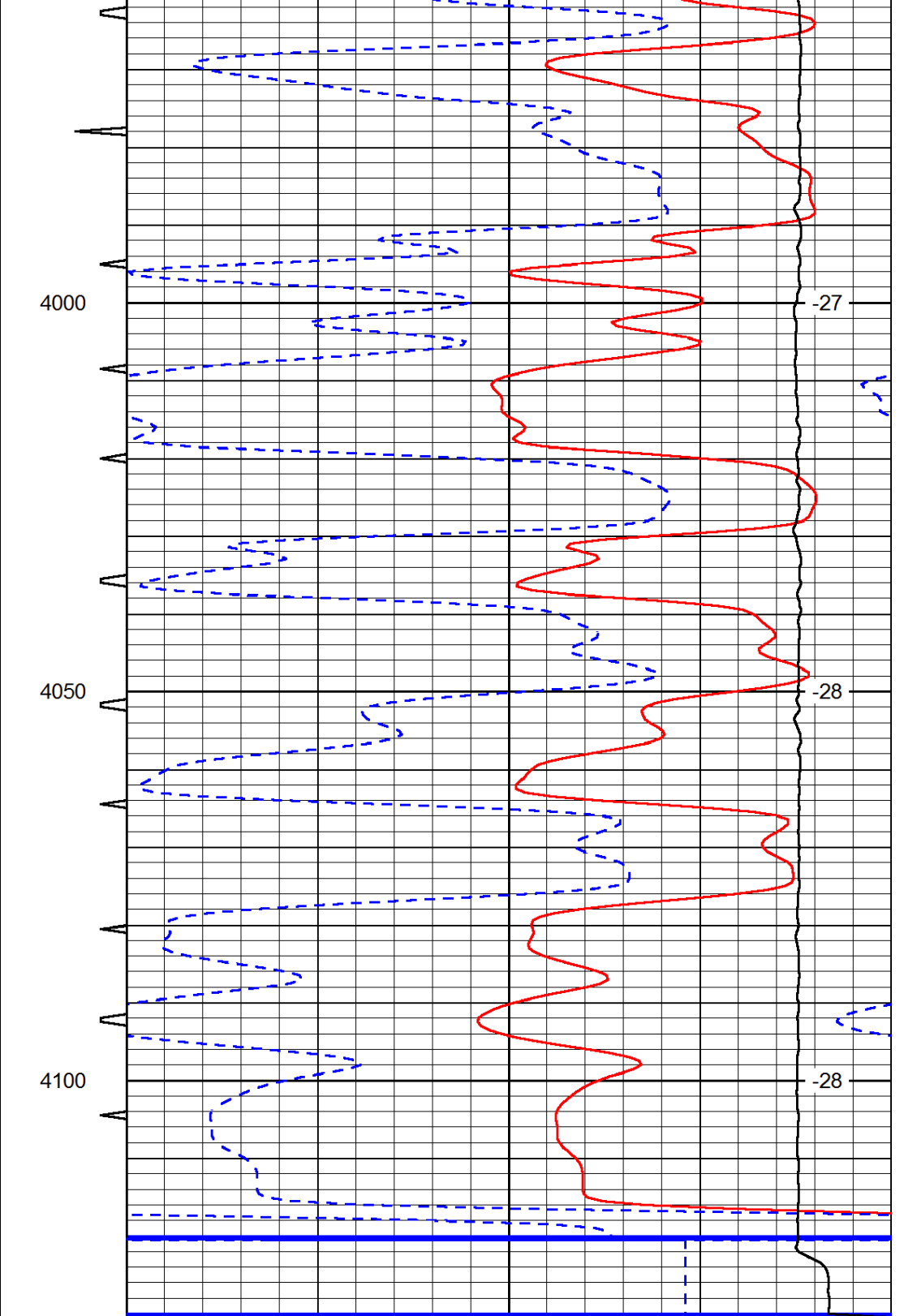
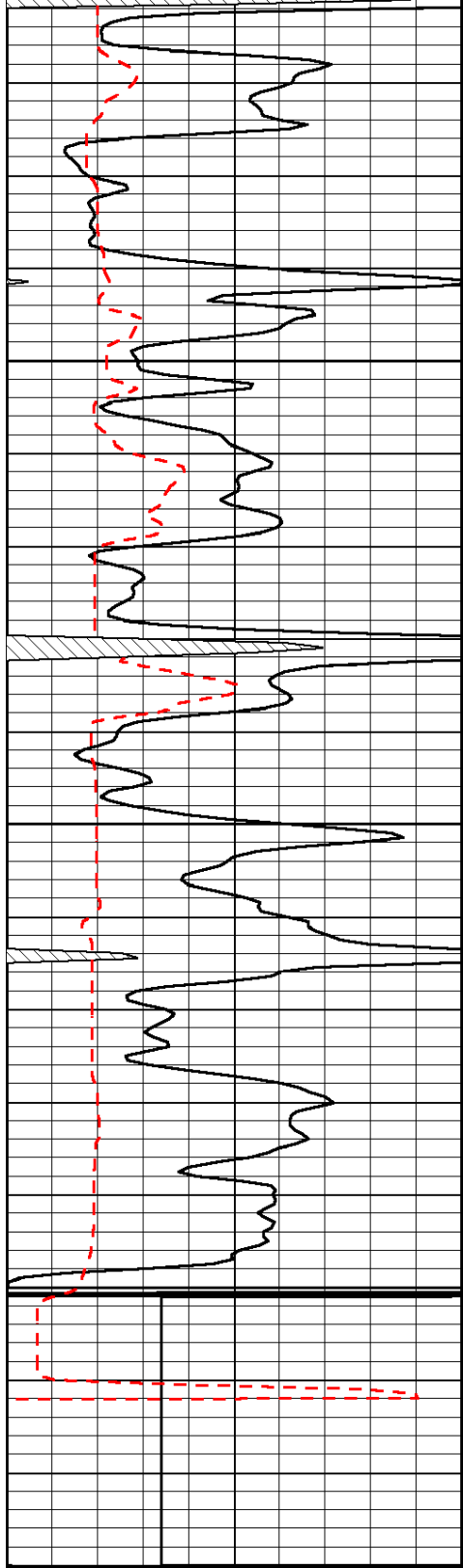












0	Gamma Ray	150	Sonic Int	140	Delta Time (usec/ft)	40
150	Gamma Ray	300	5	0	SPOR	-10
6	Caliper (GAPI)	16		15000	LTEN (lb)	0
LSPD						