



Dual Induction Log

DIGITAL LOG (785) 625-3858

API No.	15-097-21,677-00-00	
Company	L.D. Drilling, Inc.	
Well	Anthony No. 1A-34	
Field		
County	Kiowa	State
		Kansas
Location	NE NE NW 330' FNL & 2,310' FWL	
Sec:	34	Twp: 27S Rge: 18W
Other Services	CNL/CDL MEL/BHCS	

Permanent Datum	Ground Level	Elevation 2199
Log Measured From	Kelly Bushing	10 Ft. Above Perm. Datum
Drilling Measured From	Kelly Bushing	
		K.B. 2209
		D.F. 2199
		G.L. 2199

Date	10/23/2010
Run Number	One
Depth Driller	5500
Depth Logger	5504
Bottom Logged Interval	5503
Top Log Interval	500
Casing Driller	8.625 @ 505
Casing Logger	
Bit Size	7.875
Type Fluid in Hole	Chemical
Salinity, ppm CL	5000
Density / Viscosity	9.4 53
pH / Fluid Loss	8.0 9.6
Source of Sample	Flowline
Rm @ Meas. Temp	.65 @ 73
Rmf @ Meas. Temp	.49 @ 73
Rmc @ Meas. Temp	.88 @ 73
Source of Rmf / Rmc	Charts
Rm @ BHT	.36 @ 131
Operating Rig Time	5 Hours
Max Rec. Temp. F	131
Equipment Number	10
Location	Hays
Recorded By	J. Long
Witnessed By	Derek Patterson

<<< Fold Here >>>

All interpretations are opinions based on inferences from electrical or other measurements and we cannot and do not guarantee the accuracy or correctness of any interpretation, and we shall not, except in the case of gross or willful negligence on our part, be liable or responsible for any loss, costs, damages, or expenses incurred or sustained by anyone resulting from any interpretation made by any of our officers, agents or employees. These interpretations are also subject to our general terms and conditions set out in our current Price Schedule.

Comments

Thank you for using Log-Tech, Inc.
(785) 625-3858

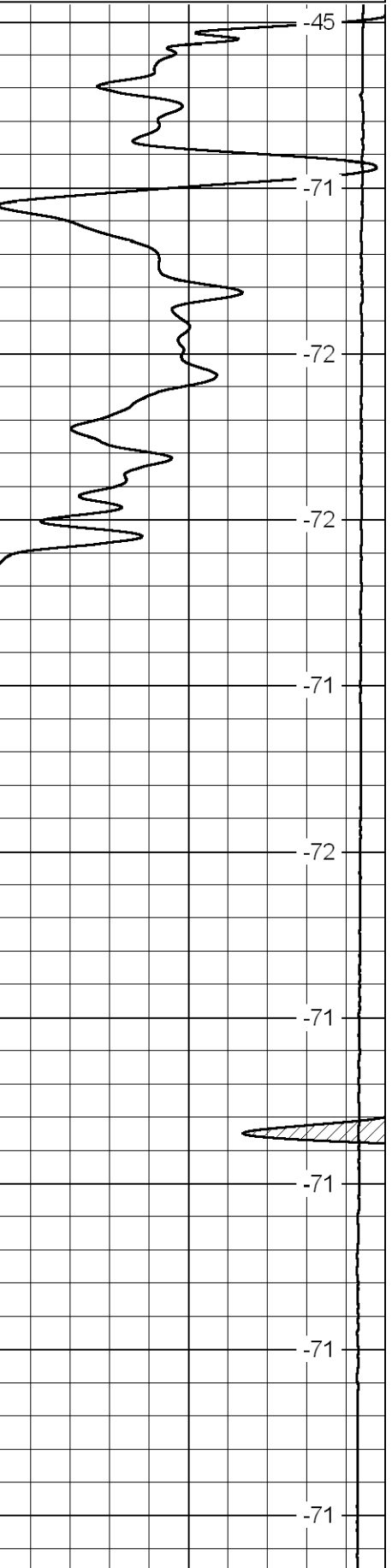
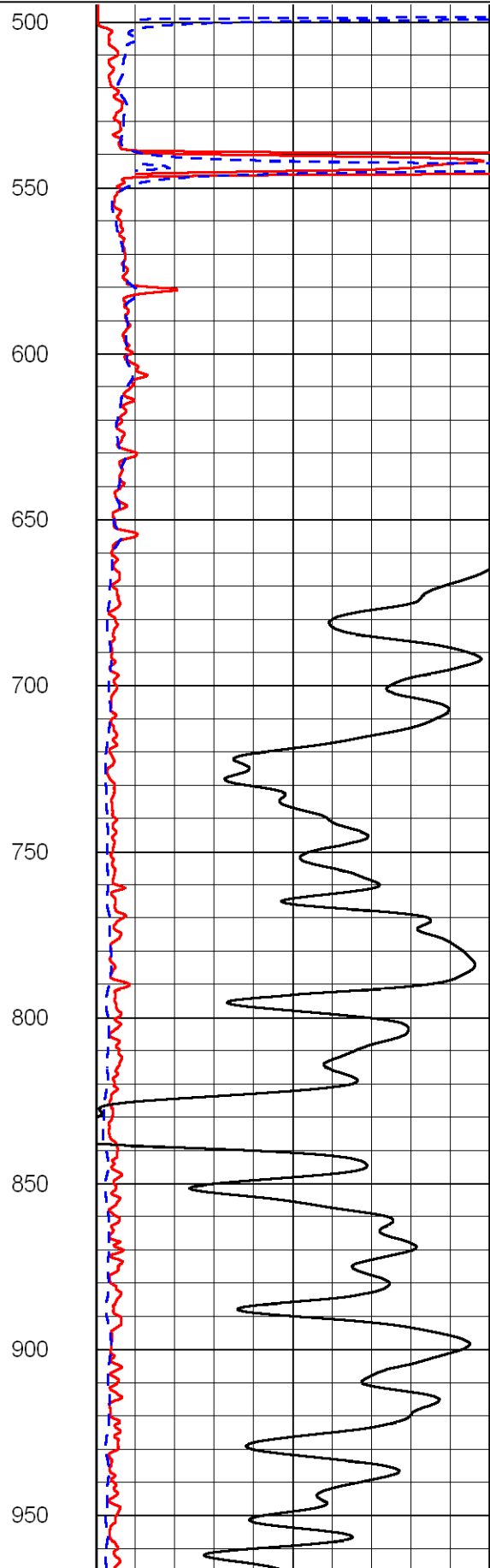
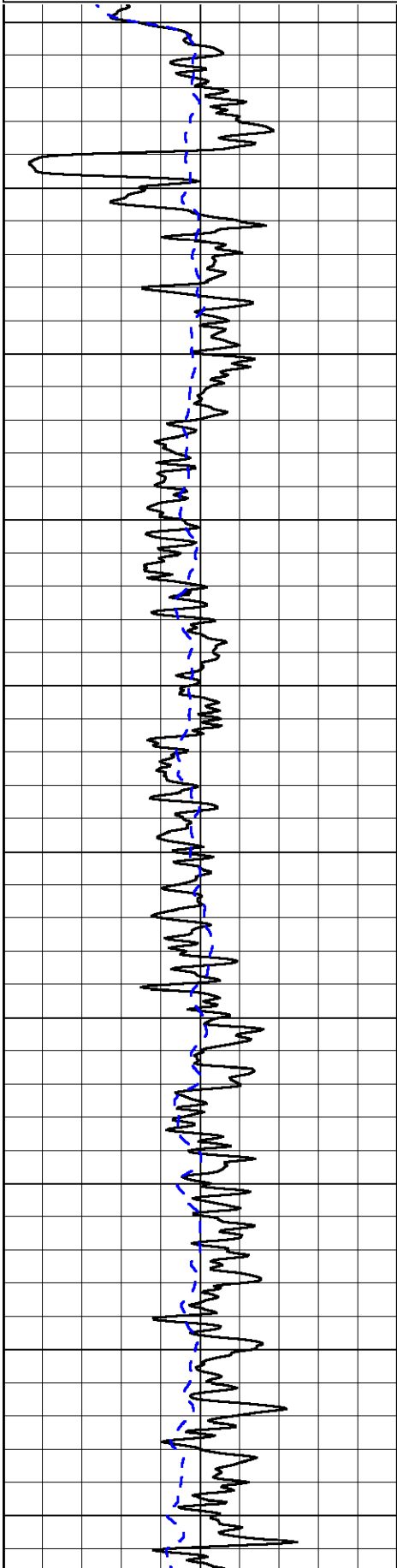
Greensburg, 1 East to Avenue 33, 2 1/2 North to Road G, 1 1/2 West, 1 North, East Into by Mailbox

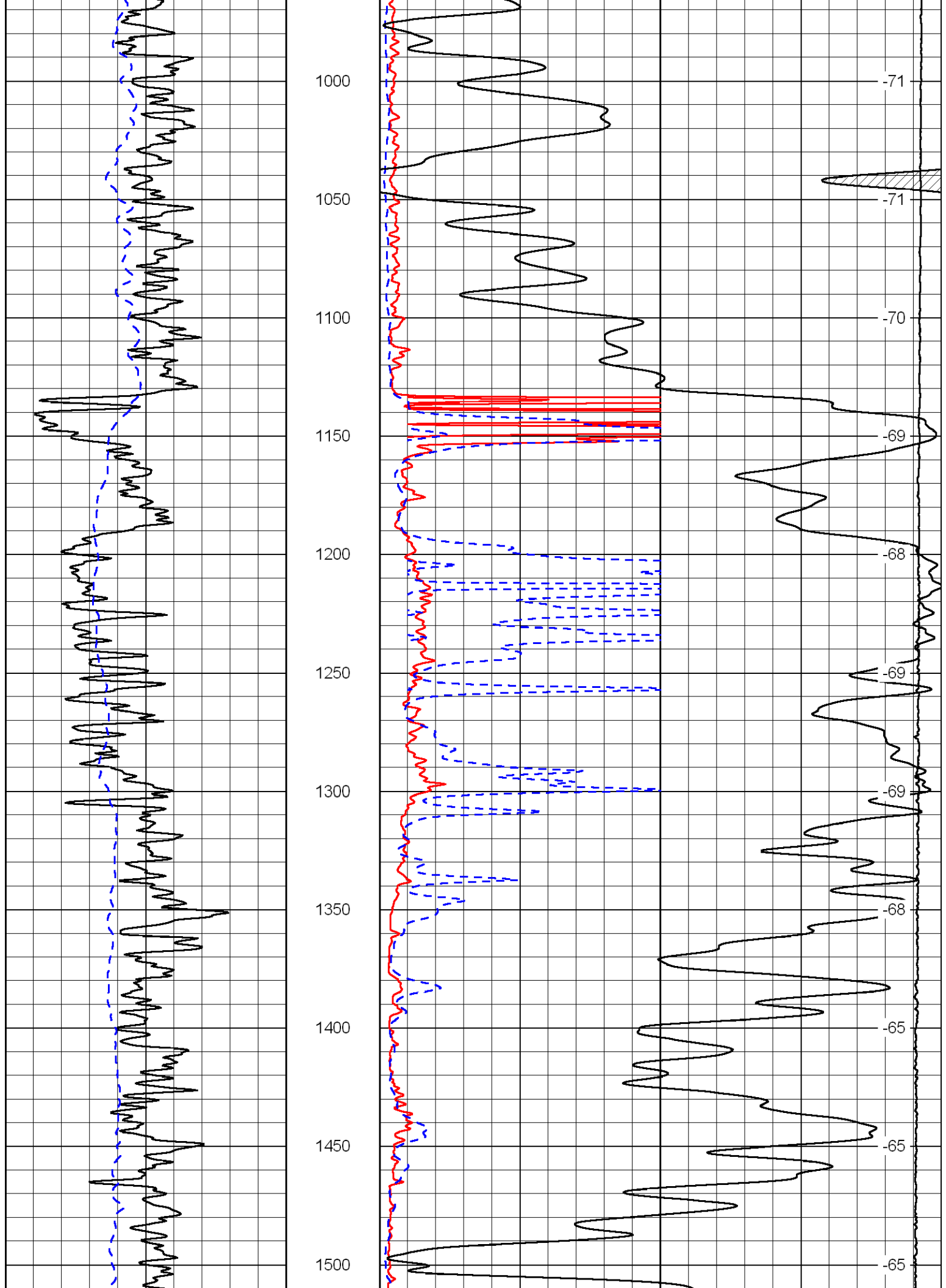
Database File: Id_anthony_1a-34hd.db
 Dataset Pathname: dil/ldstck
 Presentation Format: dil2in
 Dataset Creation: Sun Oct 24 03:23:53 2010
 Charted by: Depth in Feet scaled 1:600

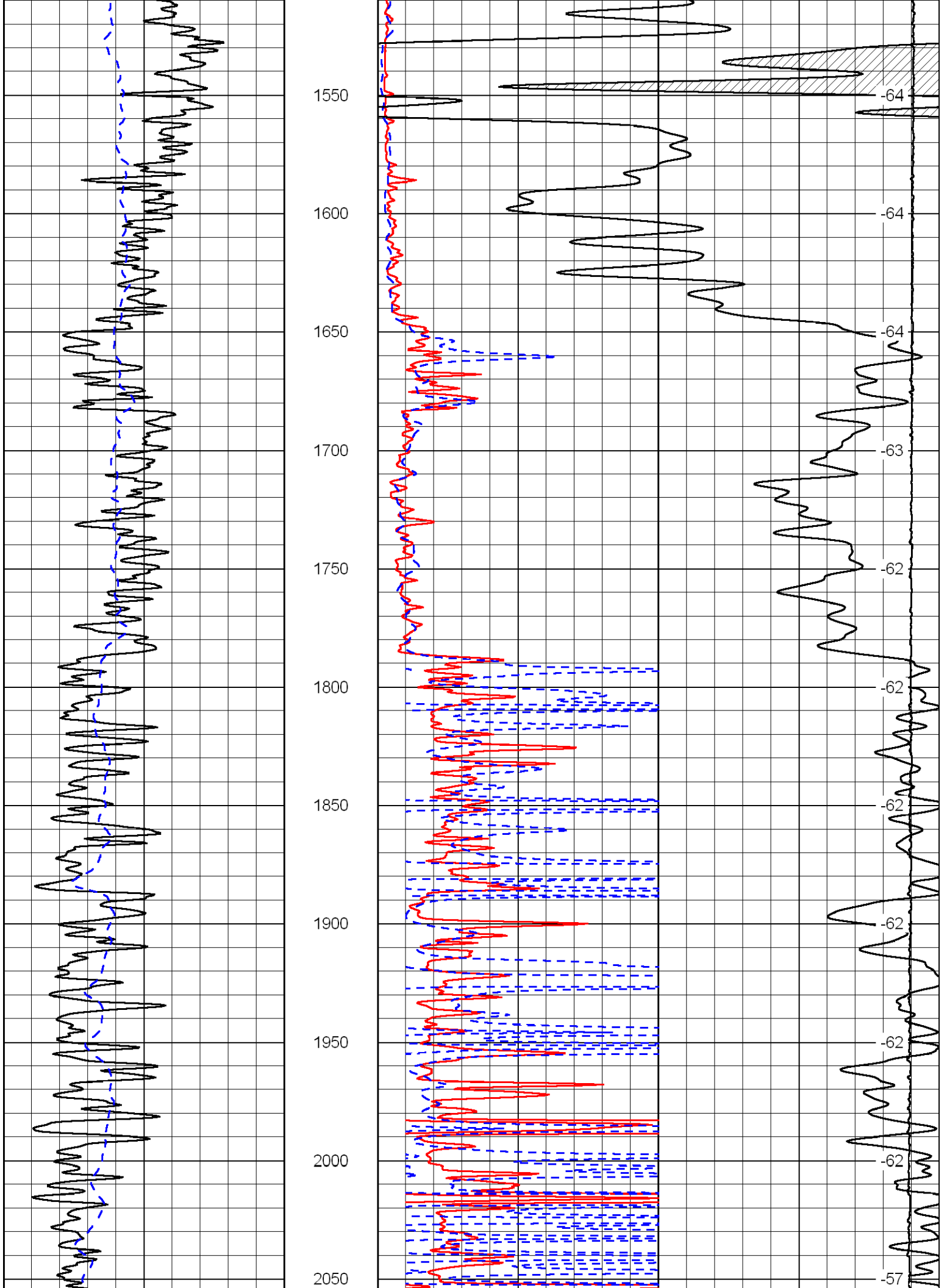
0 Gamma Ray 150
-200 SP 0

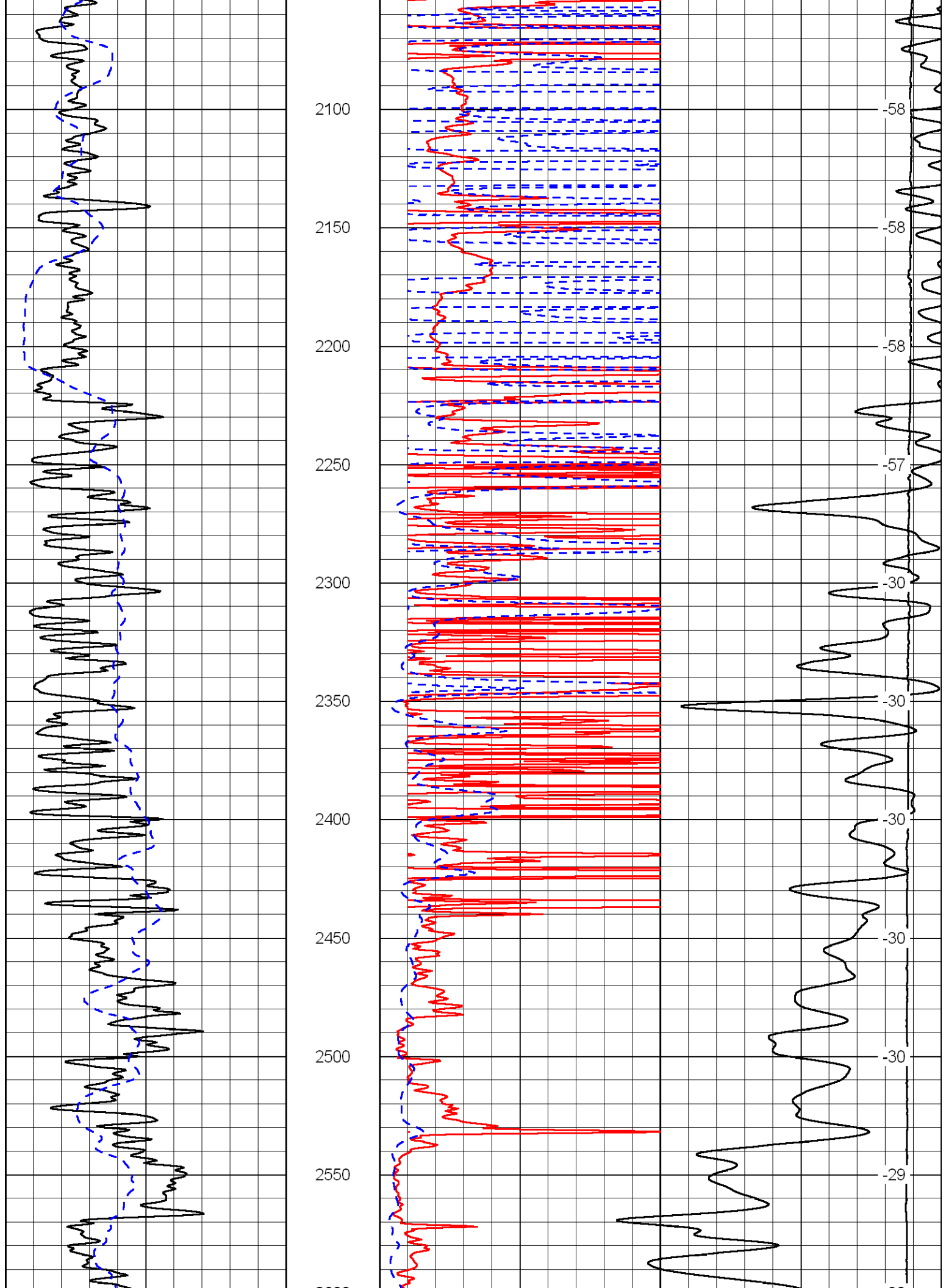
0 Shallow Resistivity 50
0 Deep Resistivity 50
1000 Conductivity 0
15000 Line Tension 0
50 Shallow Resistivity 500
50 Deep Resistivity 500

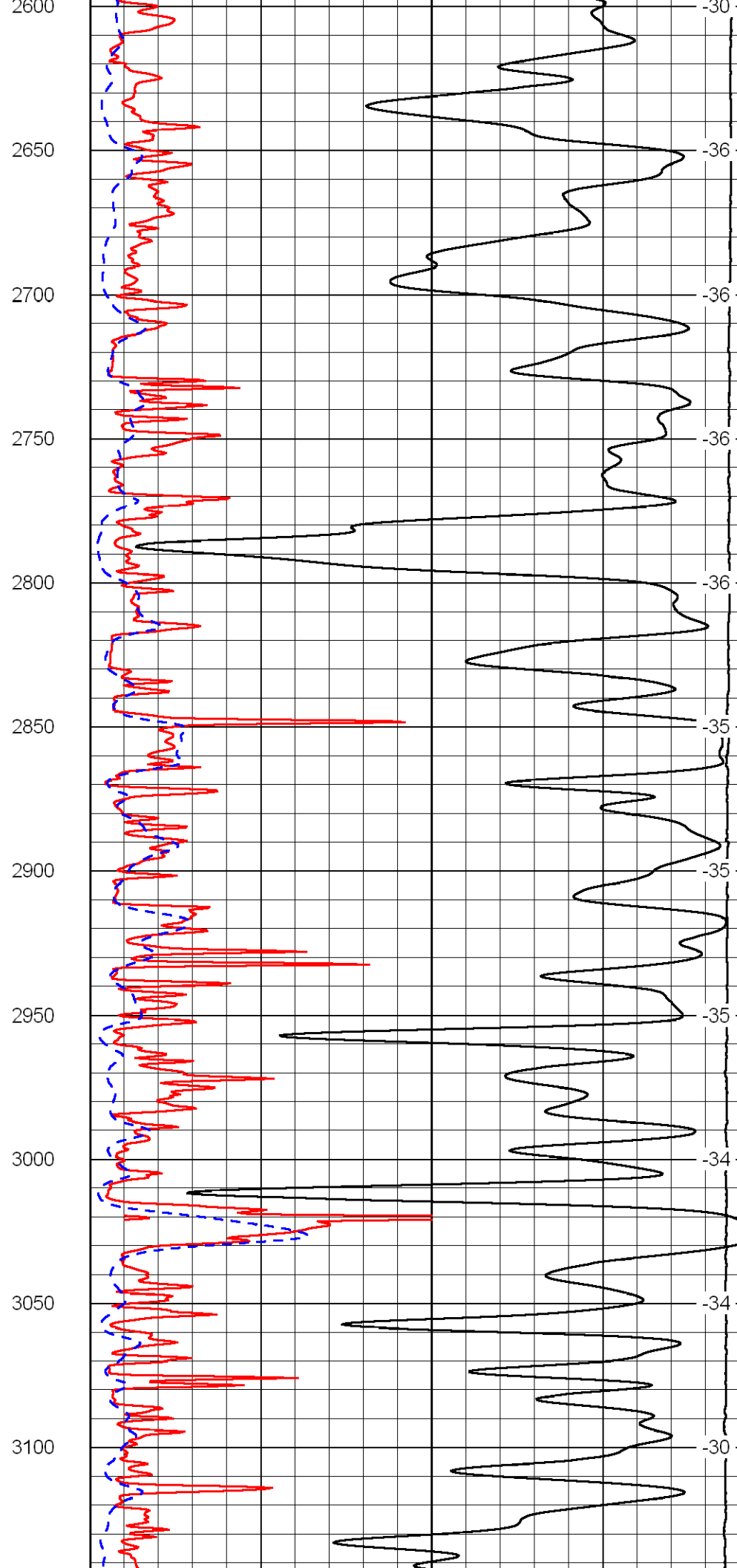
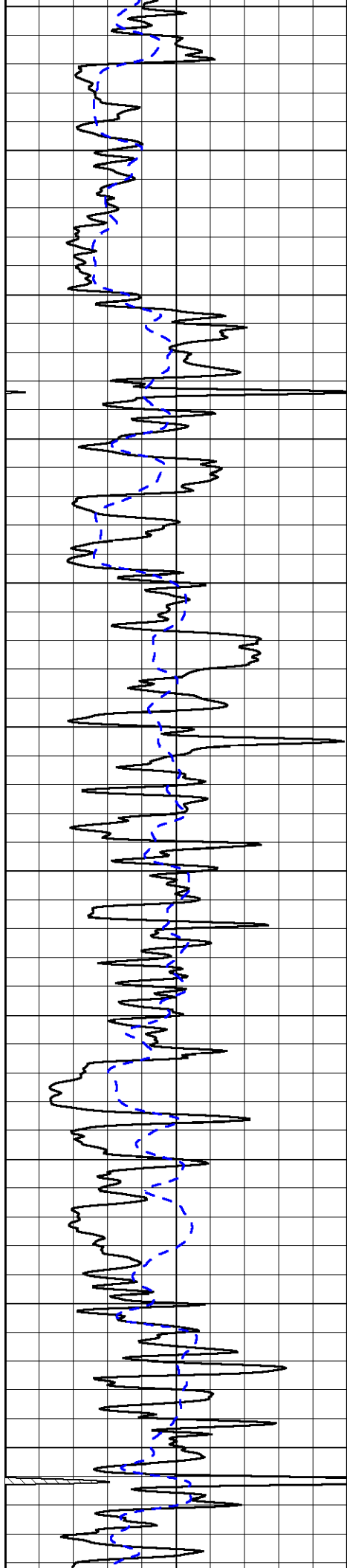
LSPD

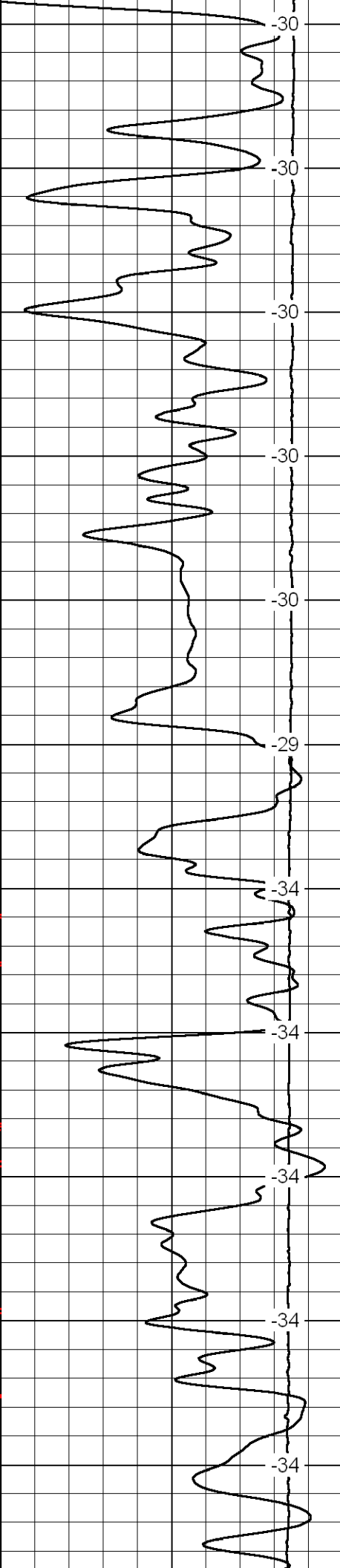
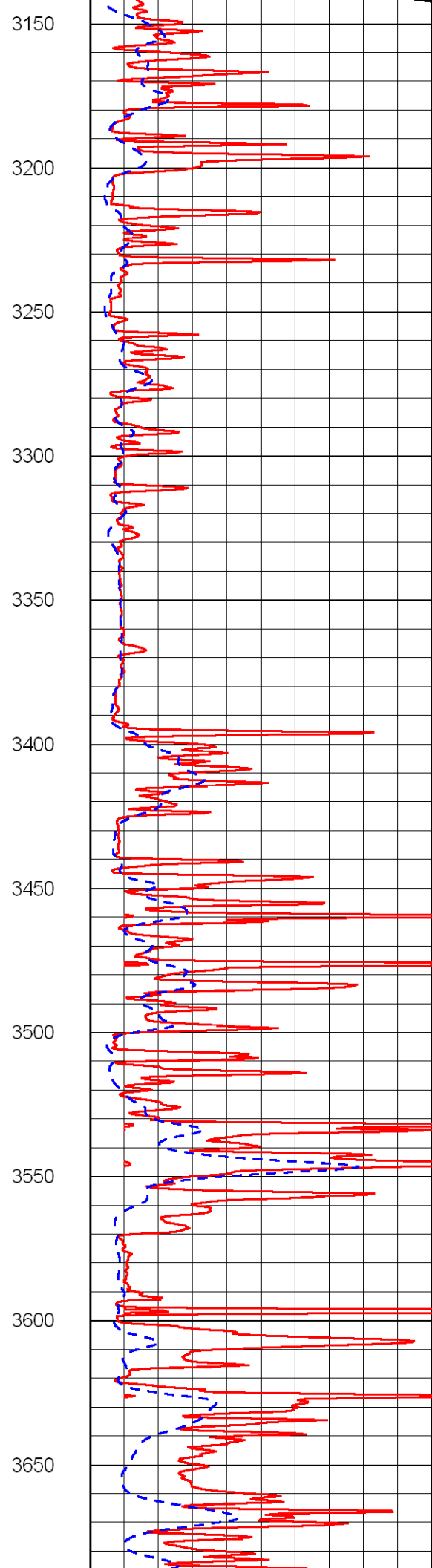
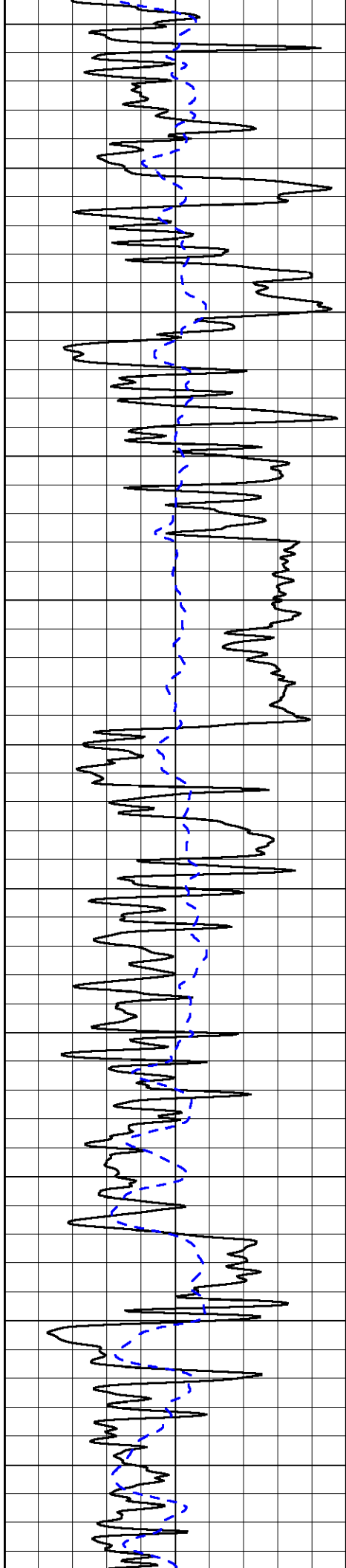


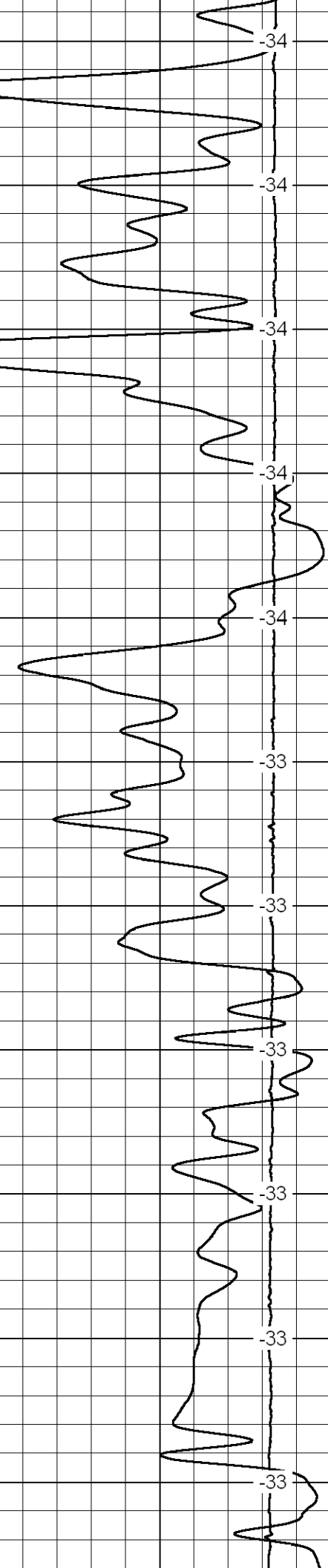
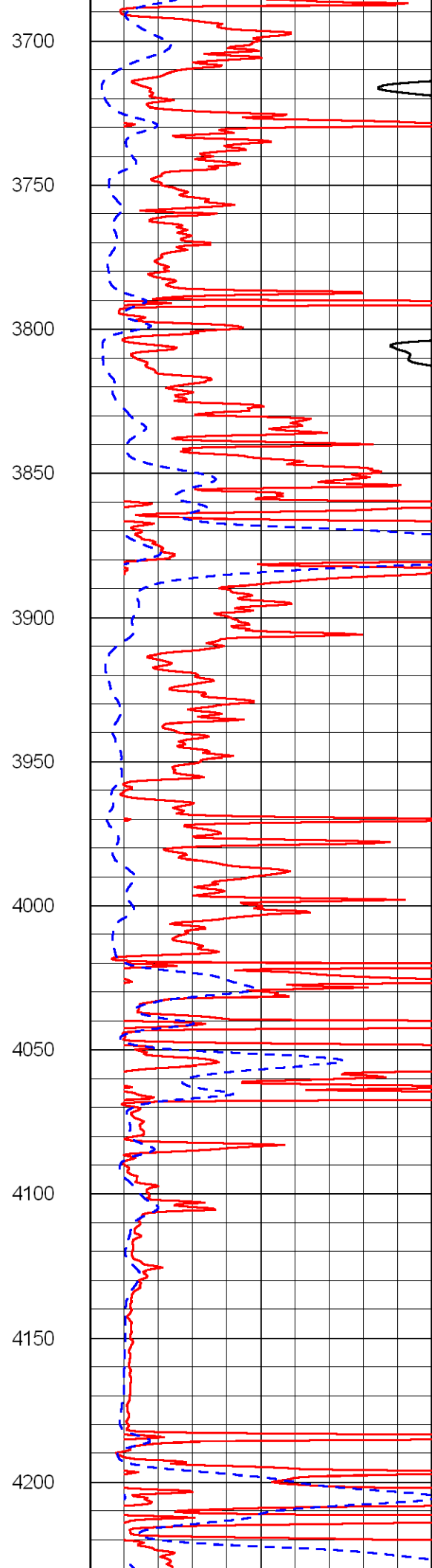
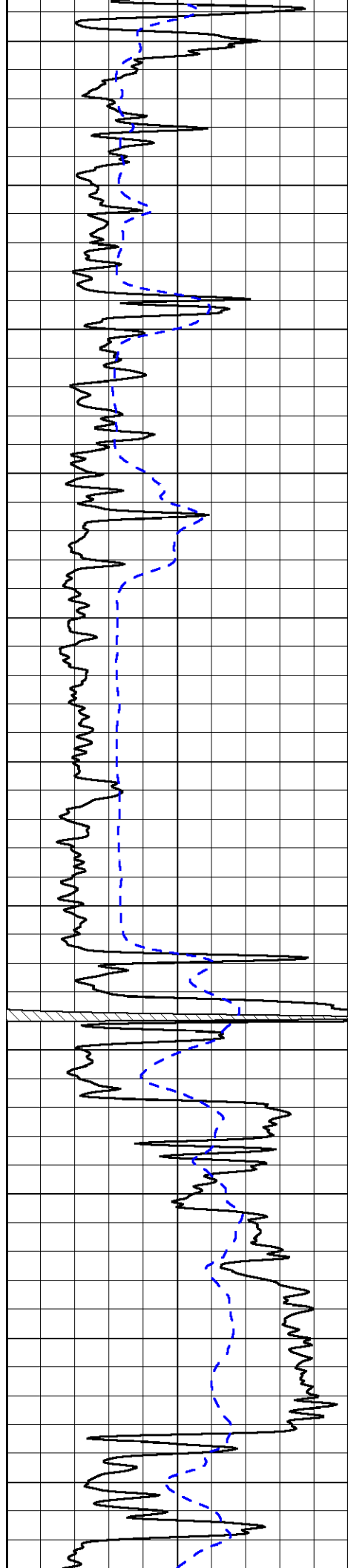


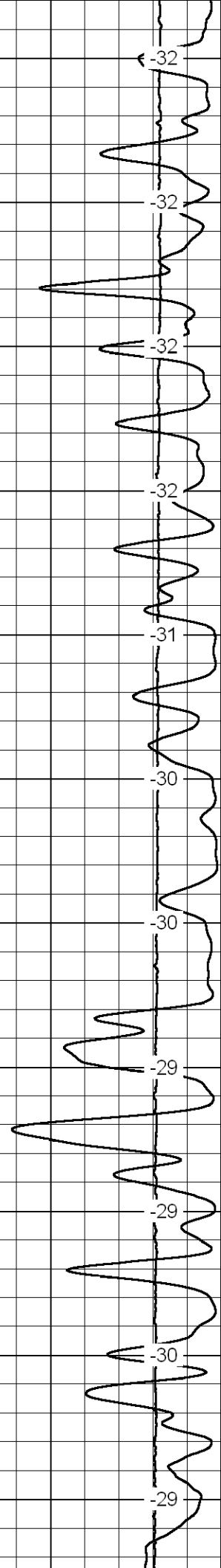
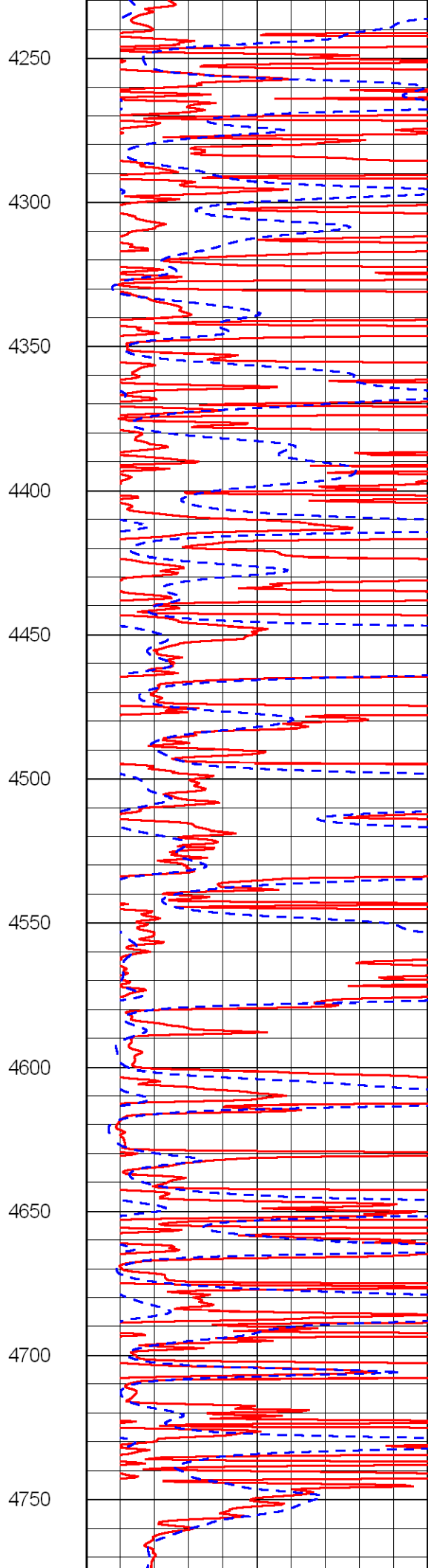
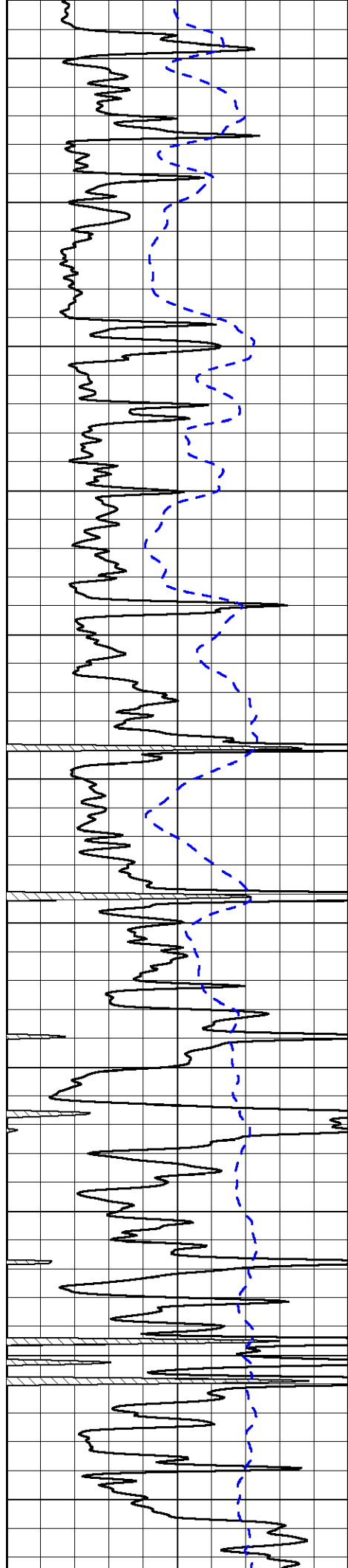


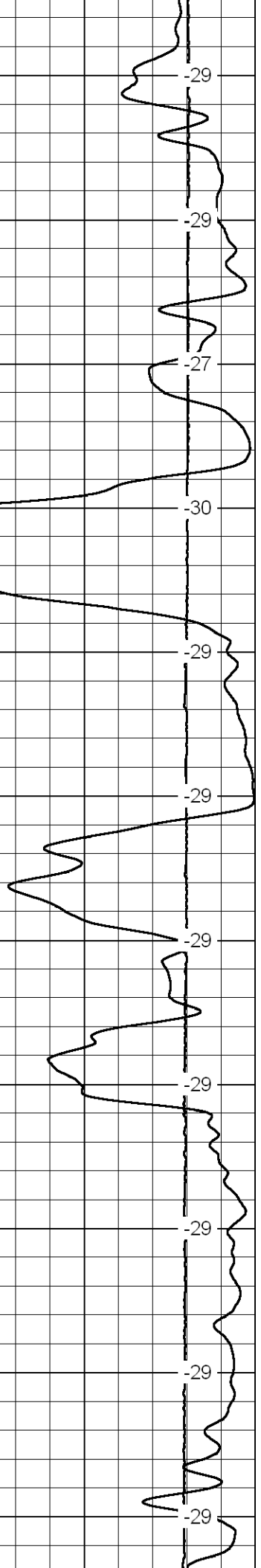
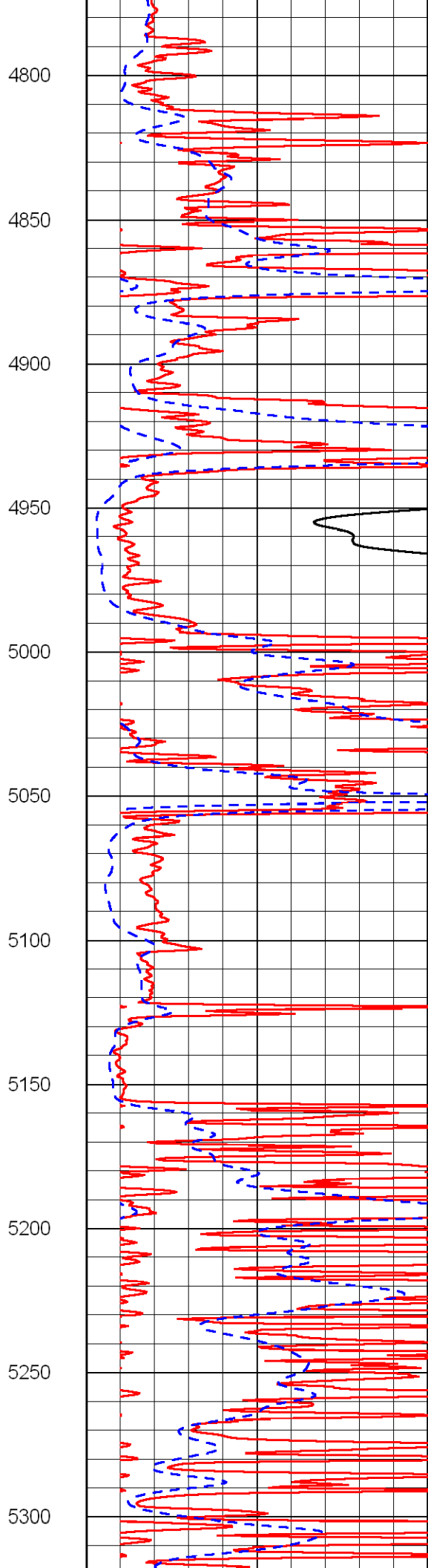
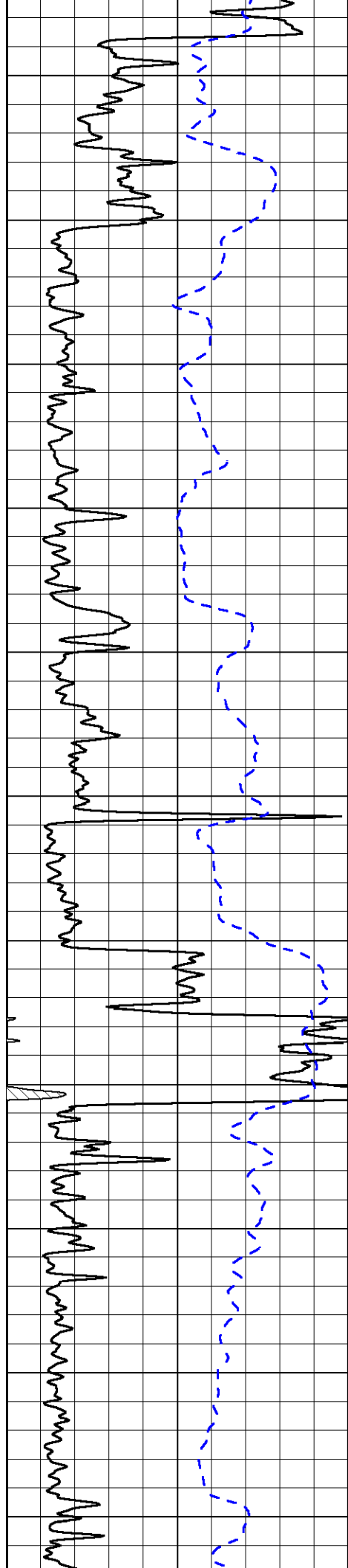


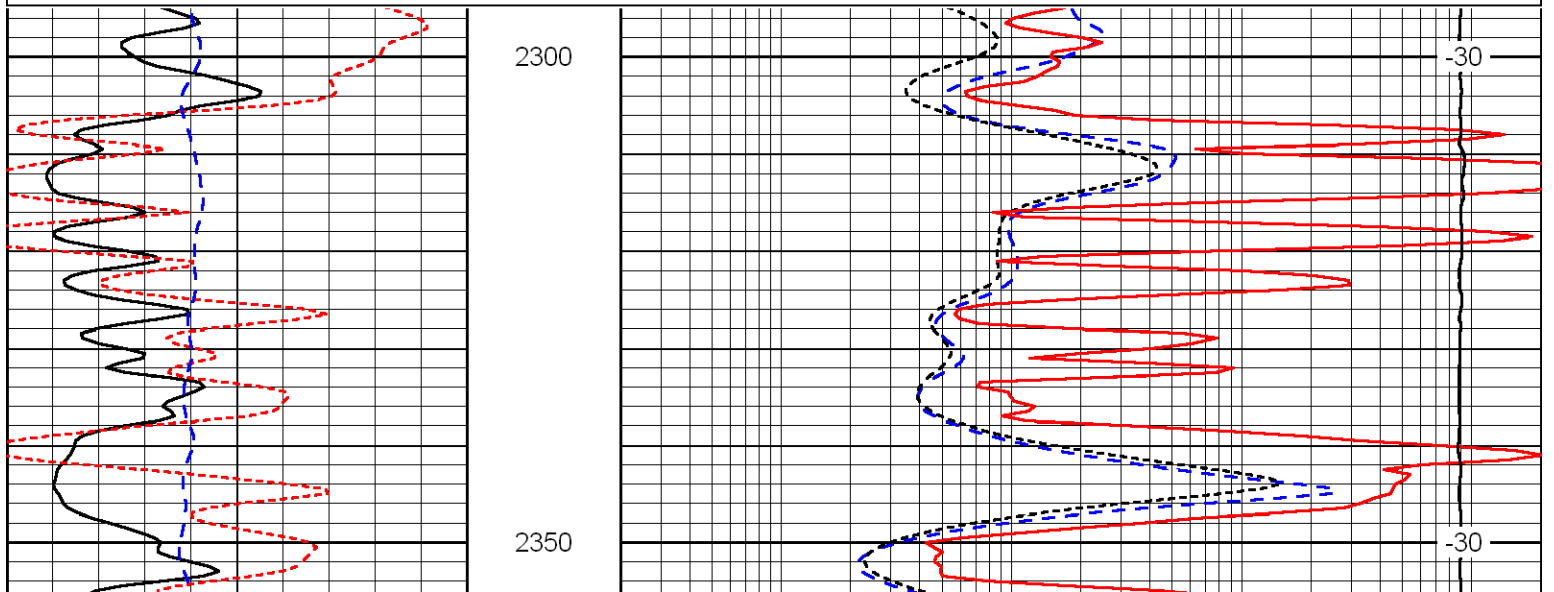
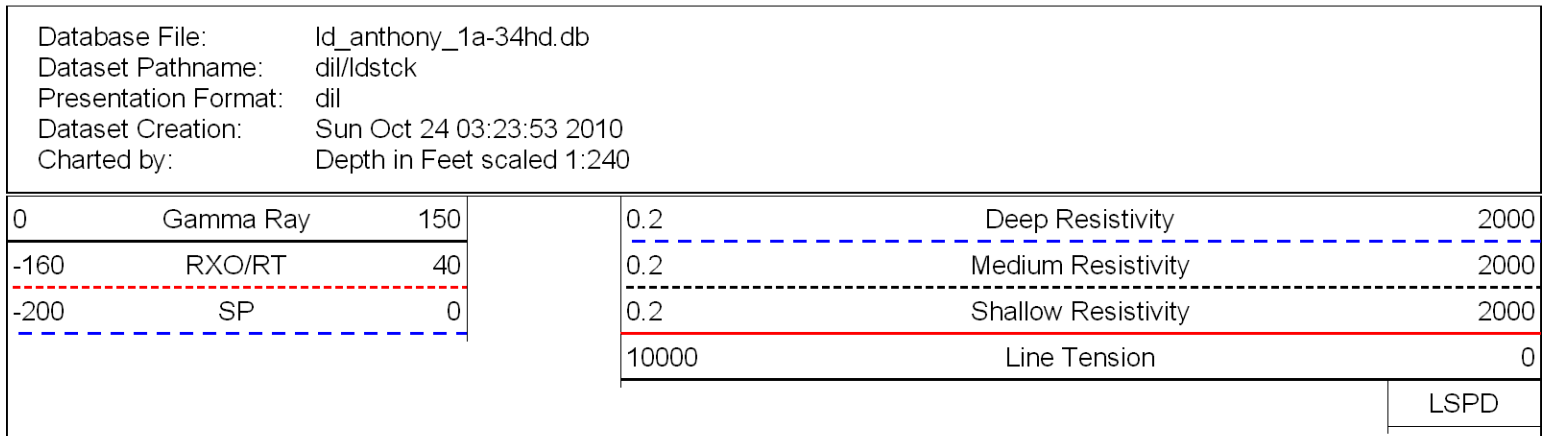
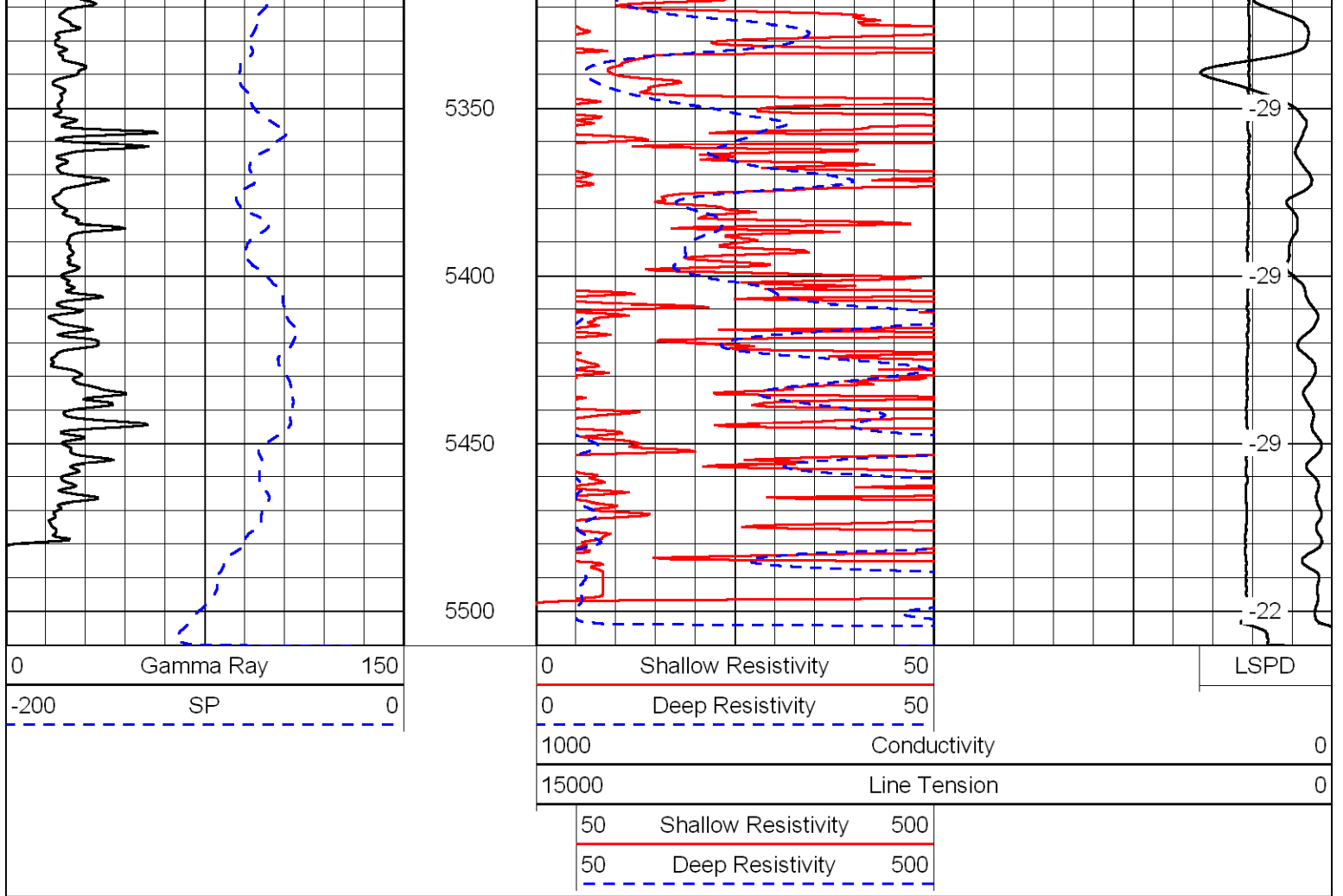


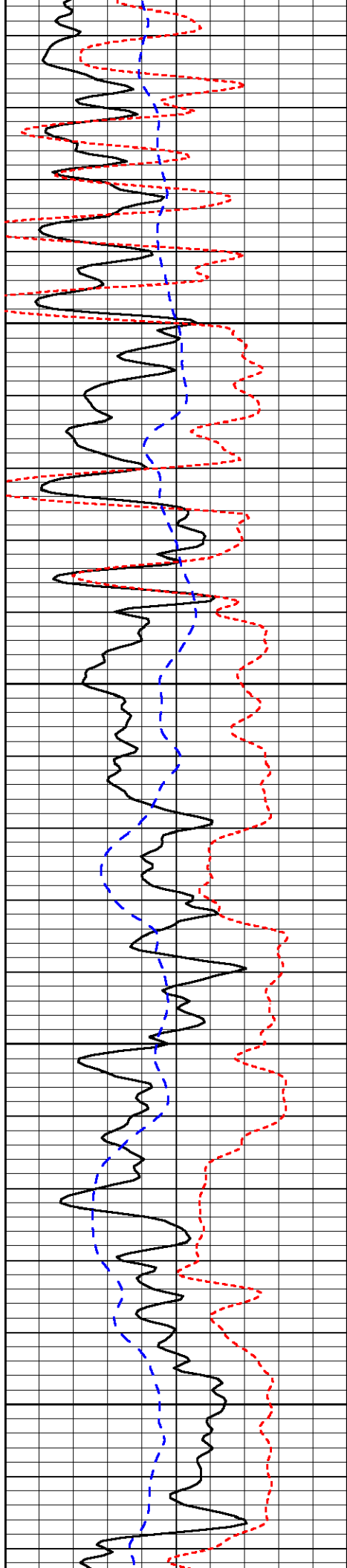










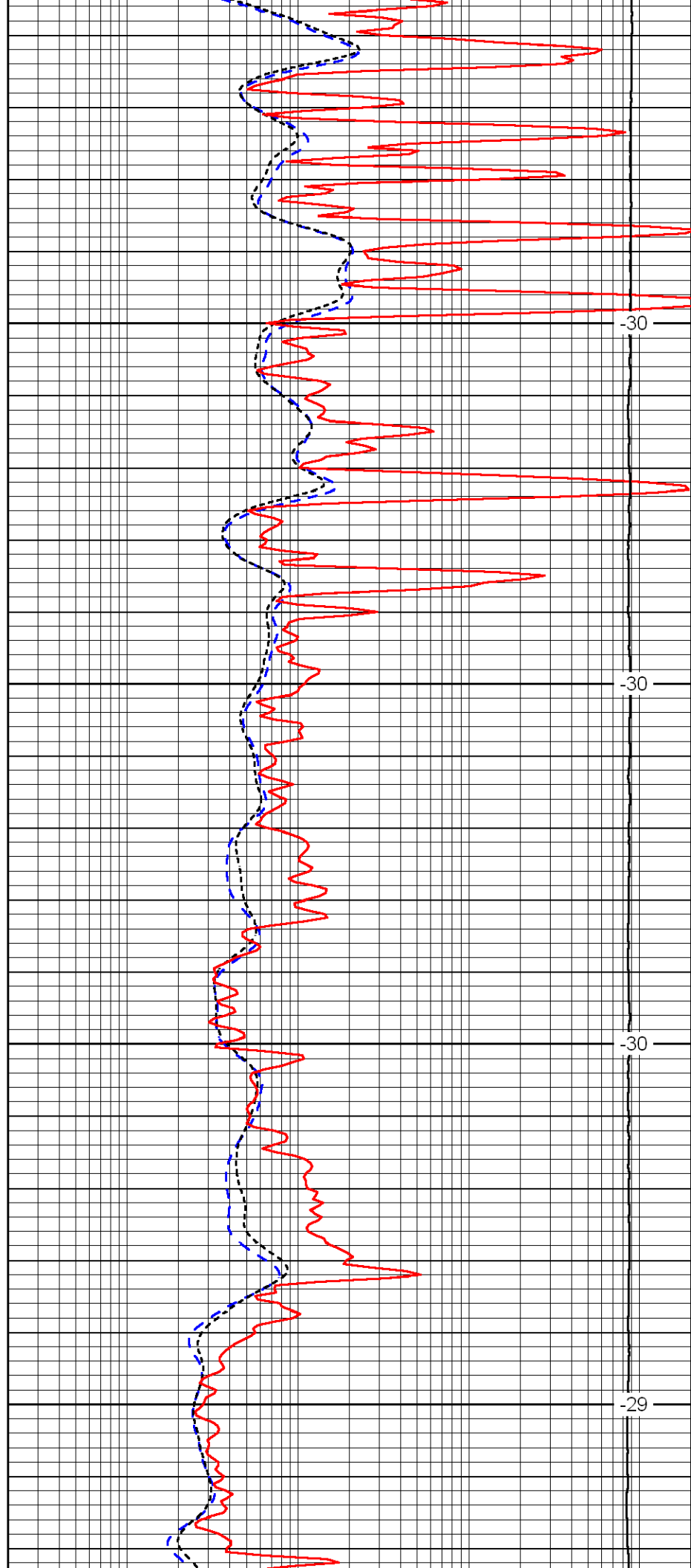


2400

2450

2500

2550

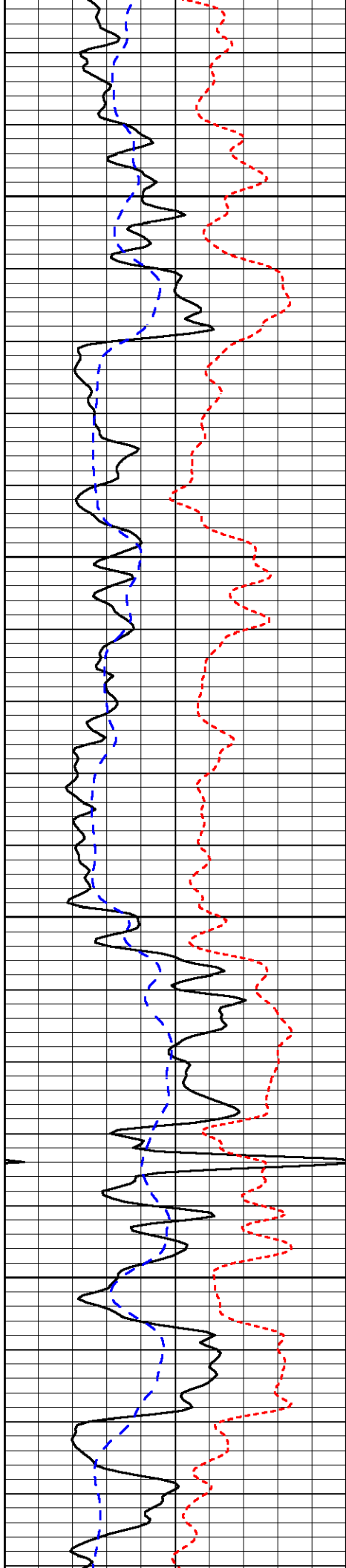


-30

-30

-30

-29

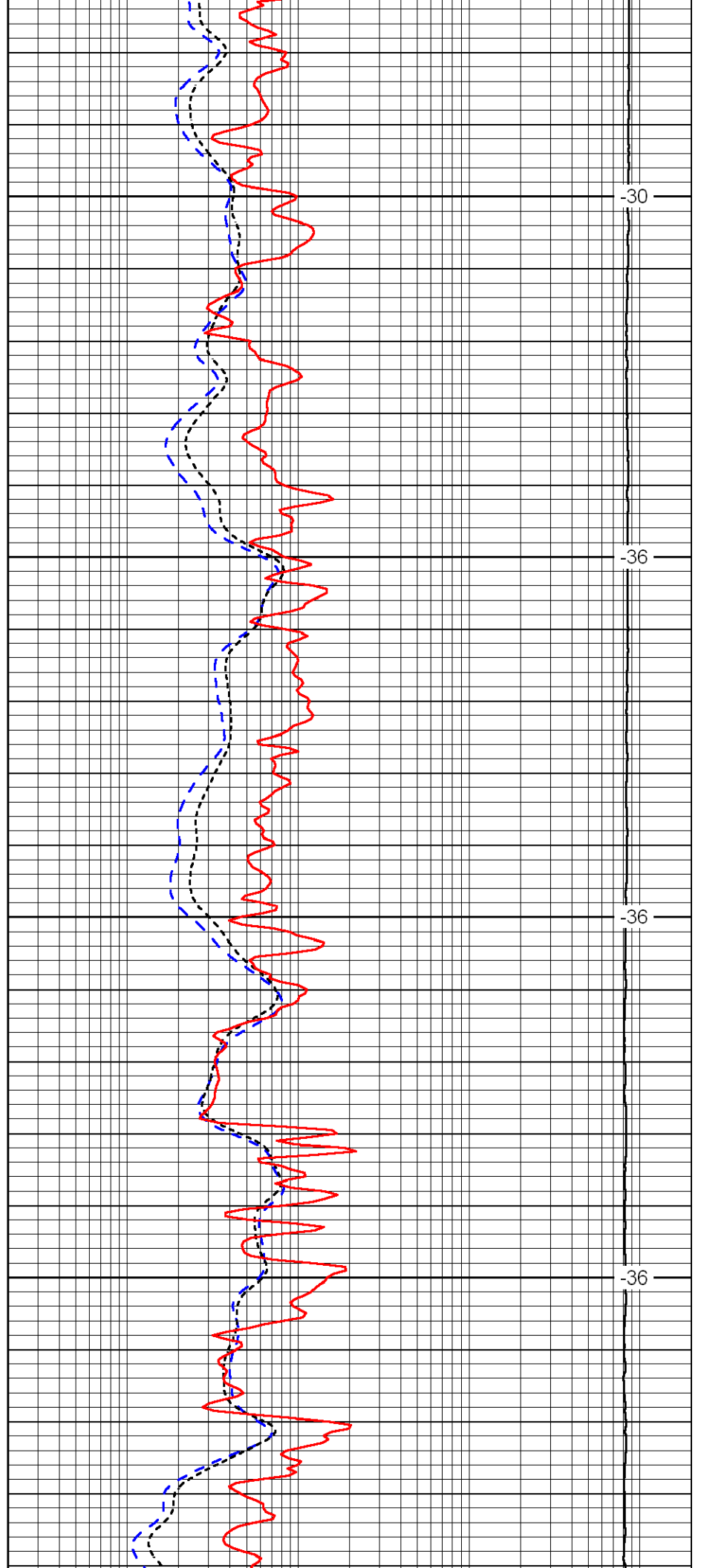


2600

2650

2700

2750

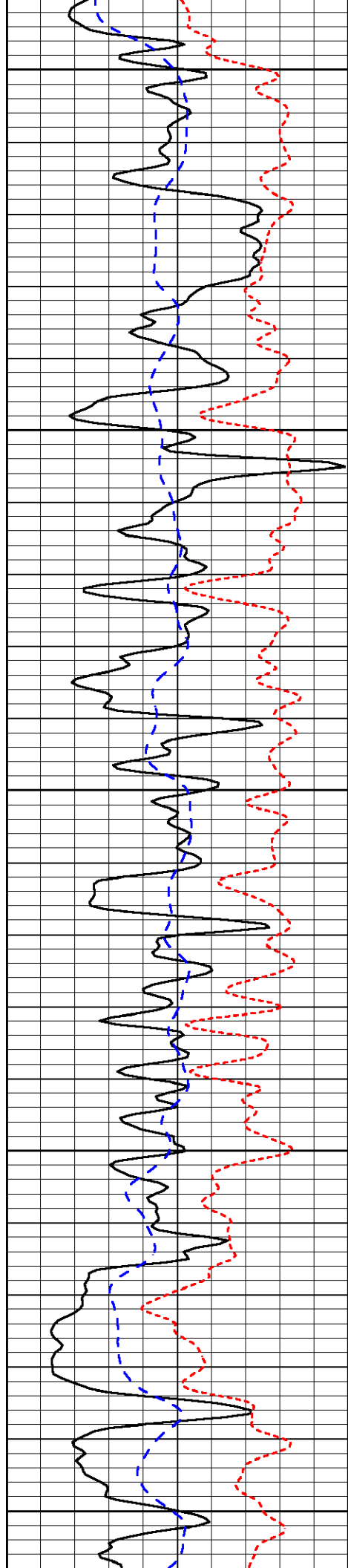


-30

-36

-36

-36



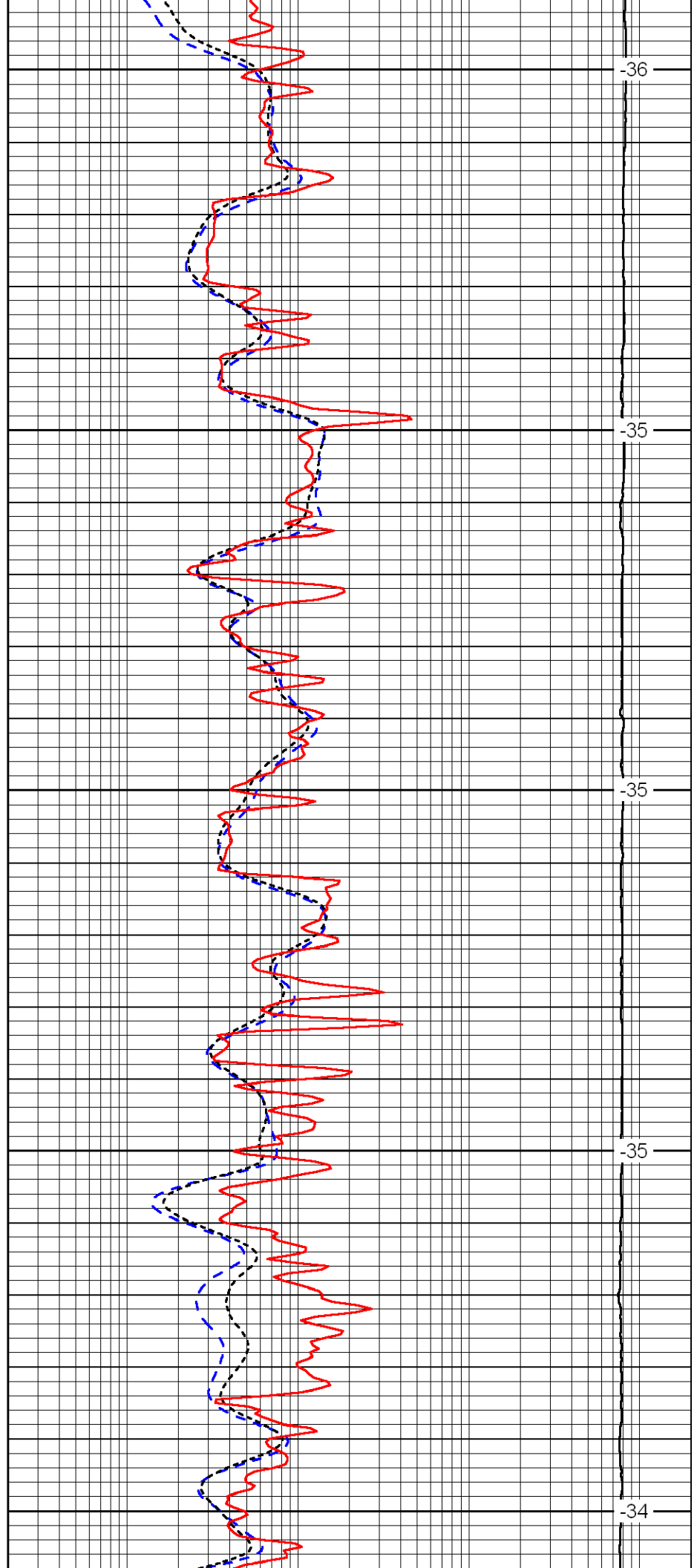
2800

2850

2900

2950

3000



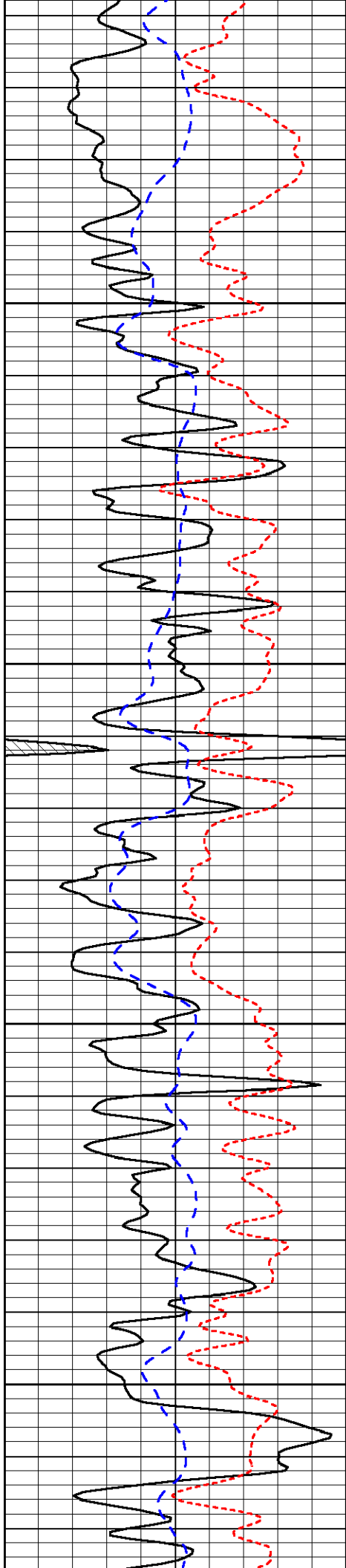
-36

-35

-35

-35

-34

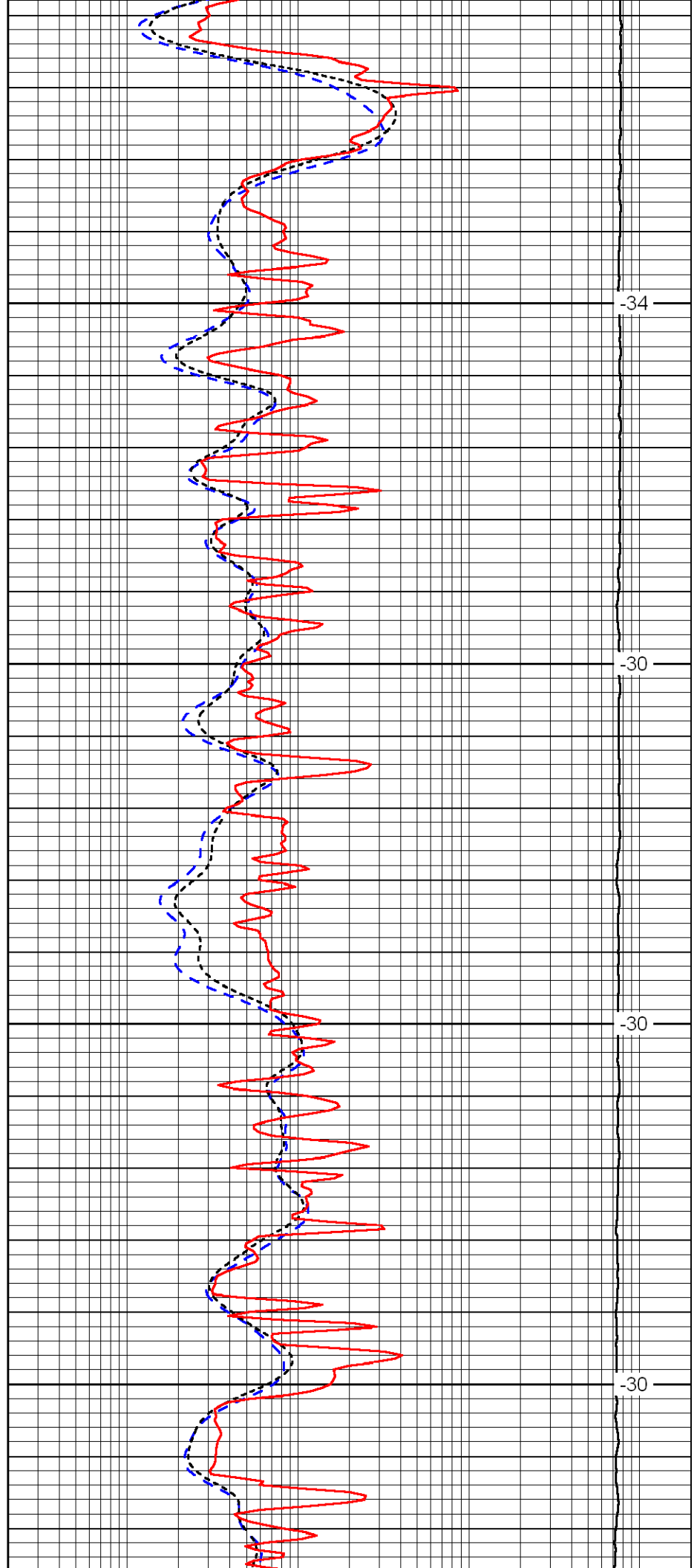


3050

3100

3150

3200

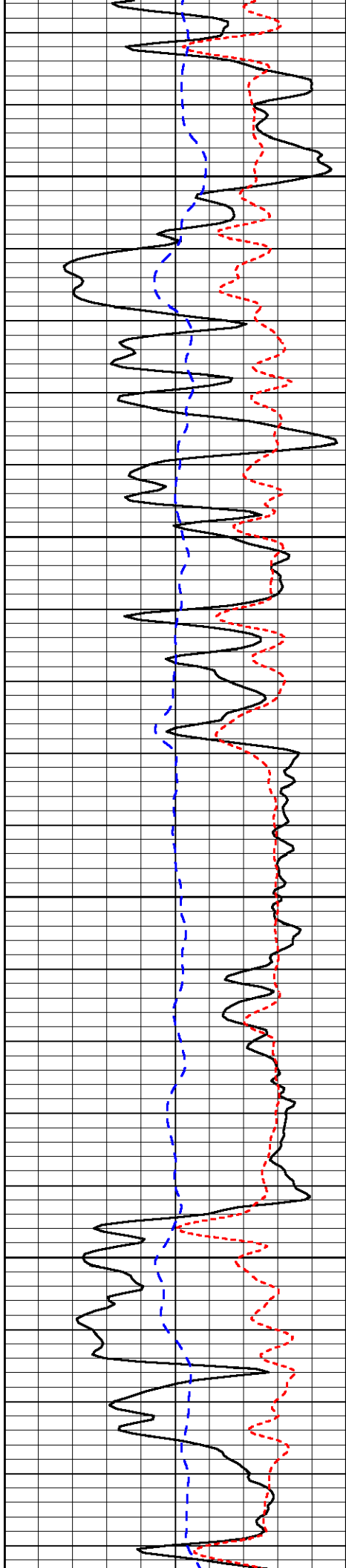


-34

-30

-30

-30

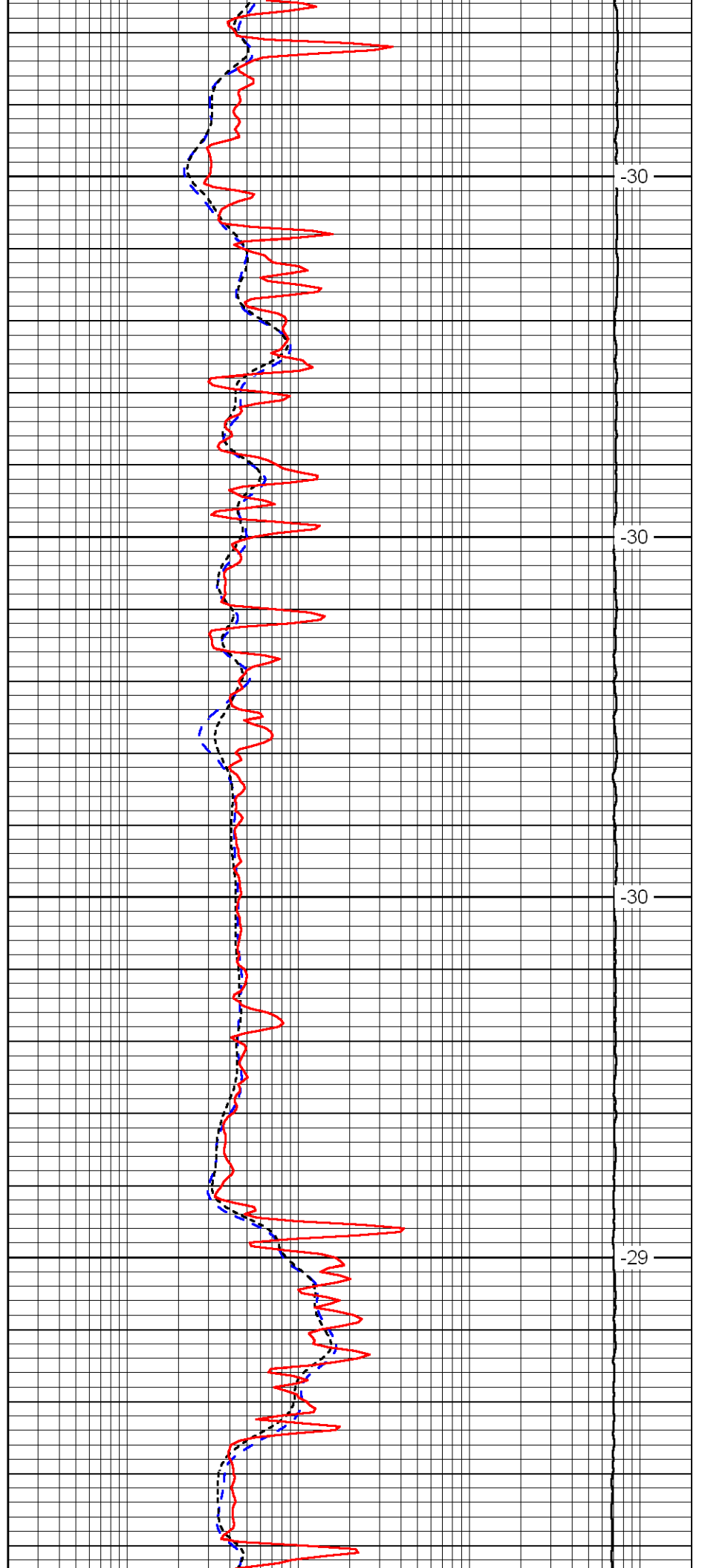


3250

3300

3350

3400

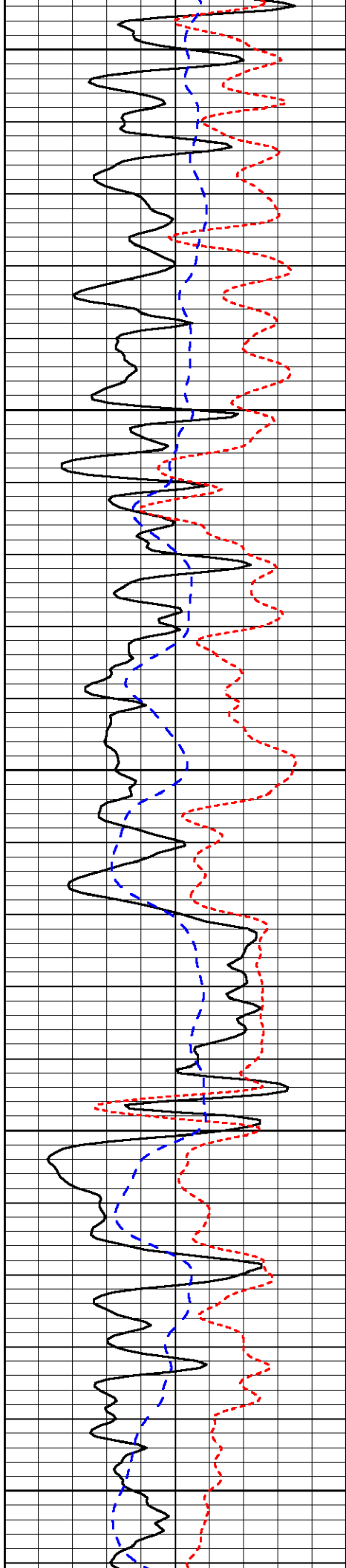


-30

-30

-30

-29



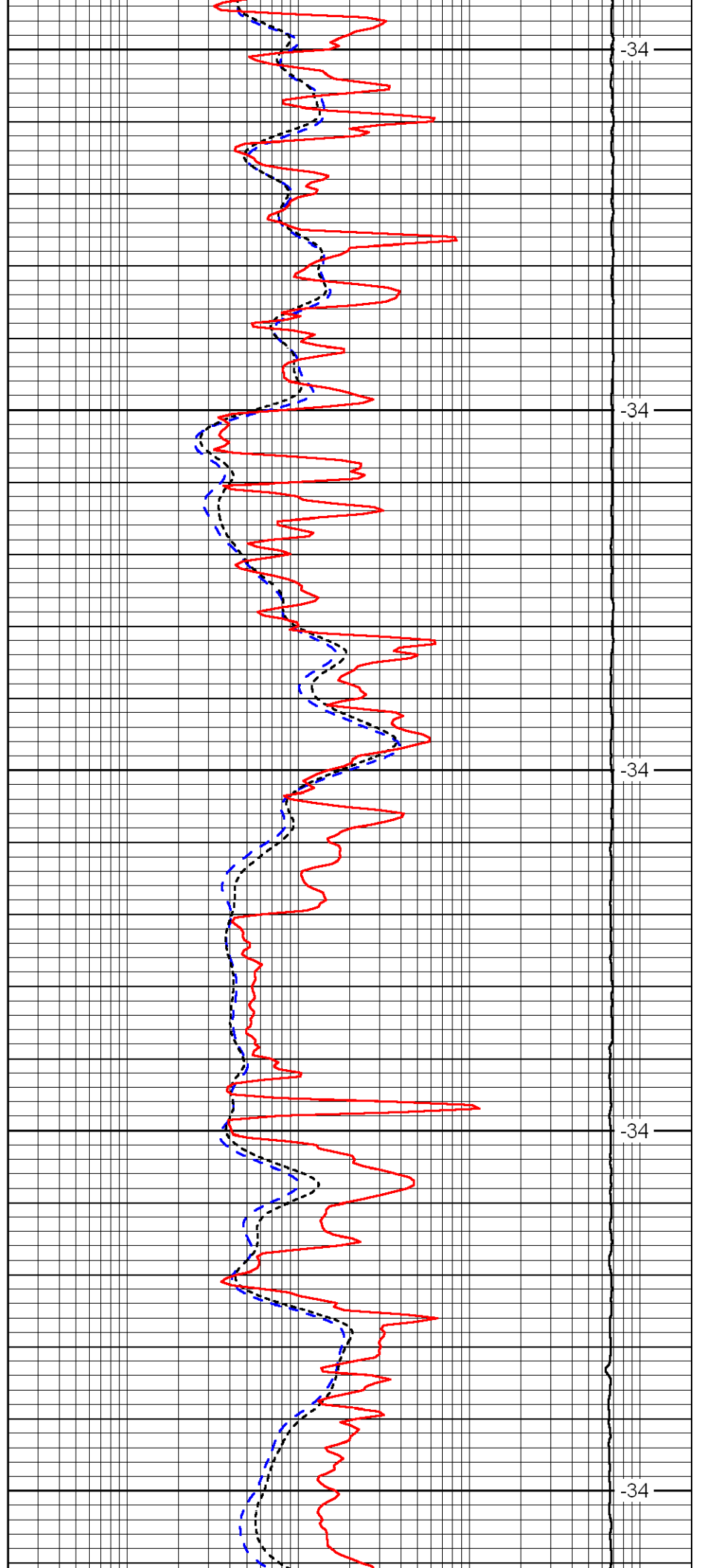
3450

3500

3550

3600

3650



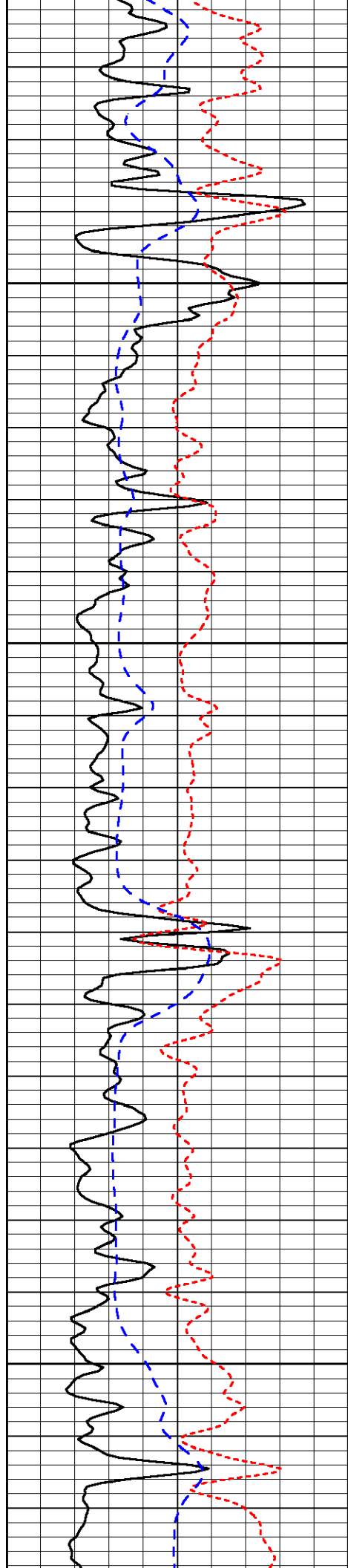
34

34

34

34

34

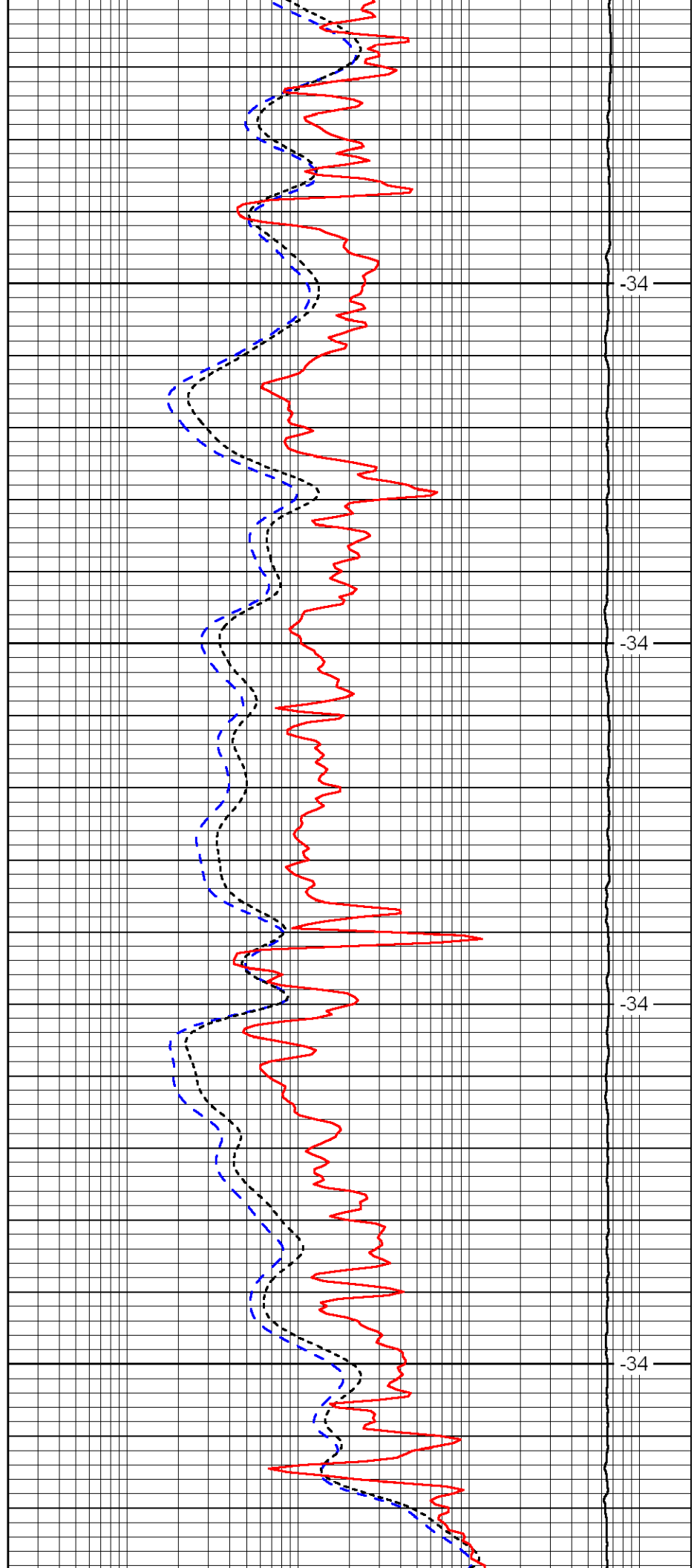


3700

3750

3800

3850

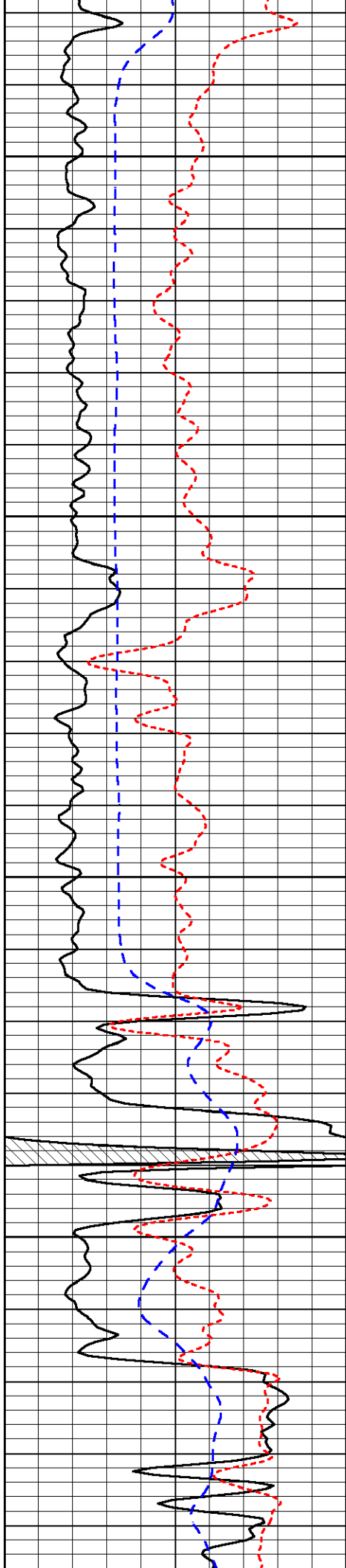


-34

-34

-34

-34

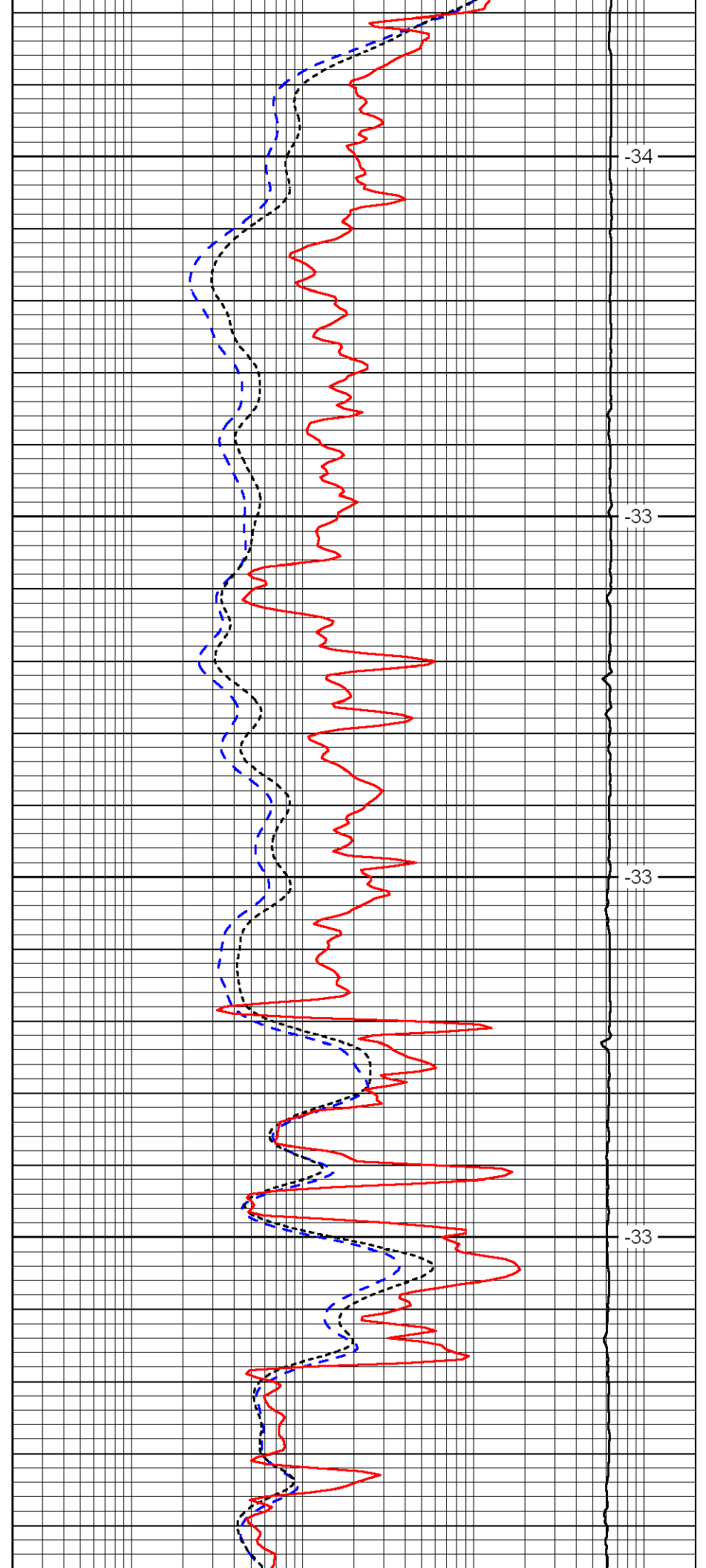


3900

3950

4000

4050

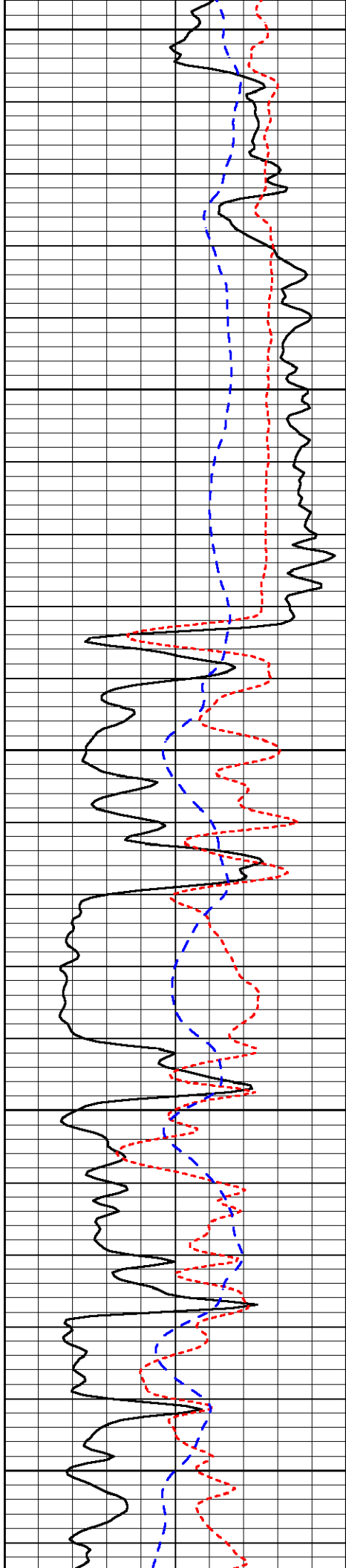


-34

-33

-33

-33



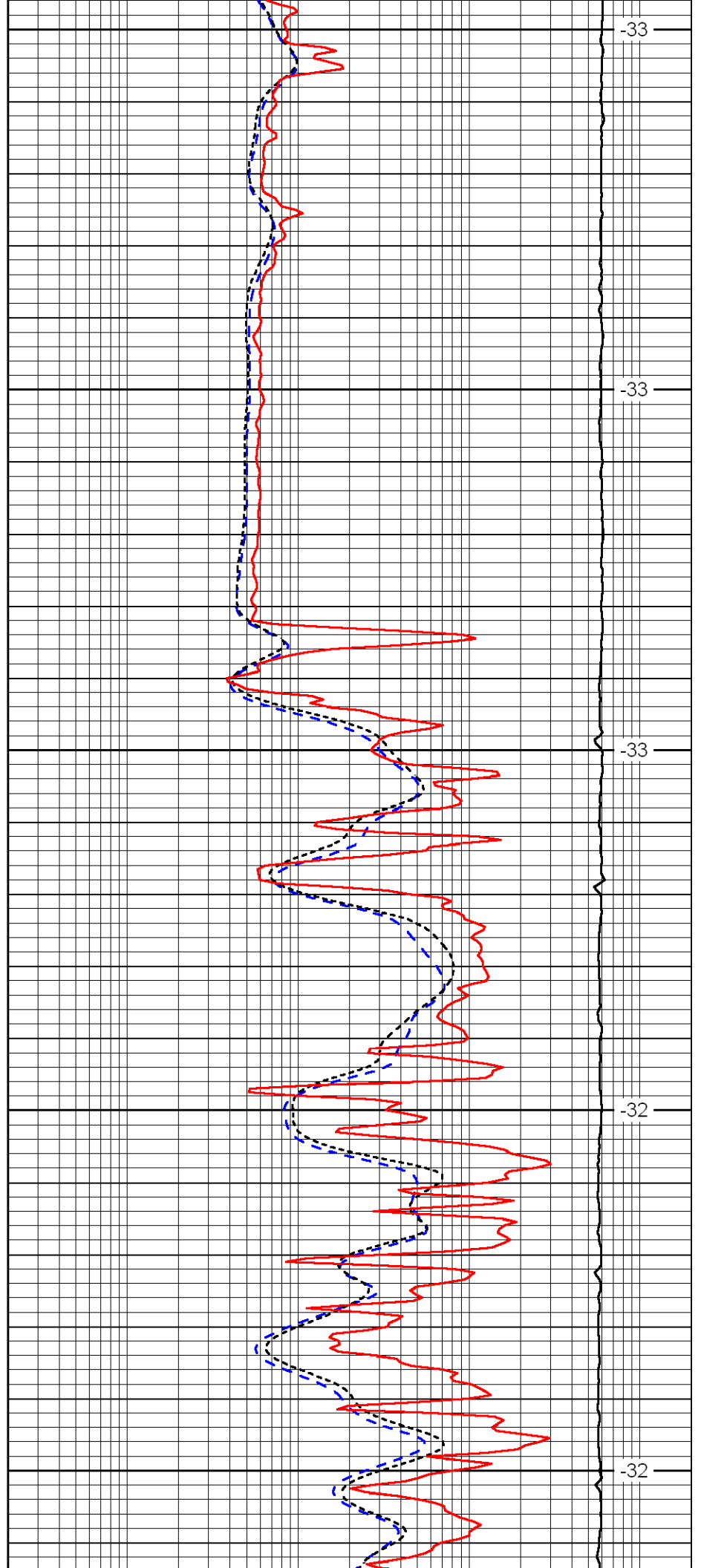
4100

4150

4200

4250

4300



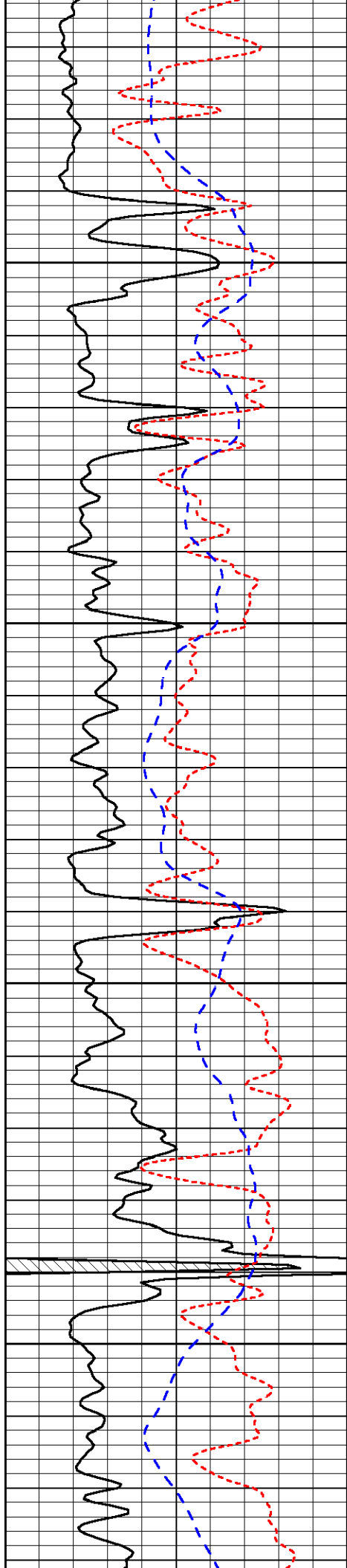
-33

-33

-33

-32

-32

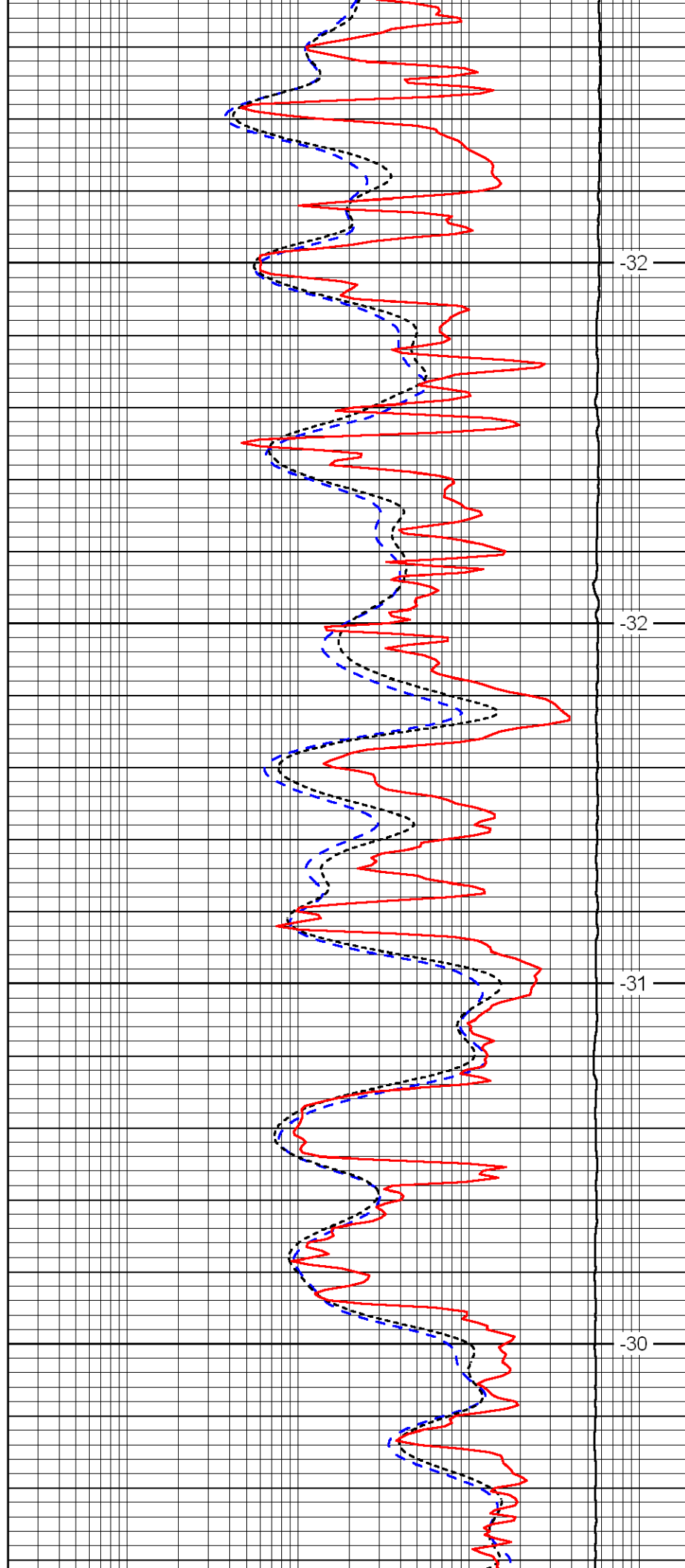


4350

4400

4450

4500

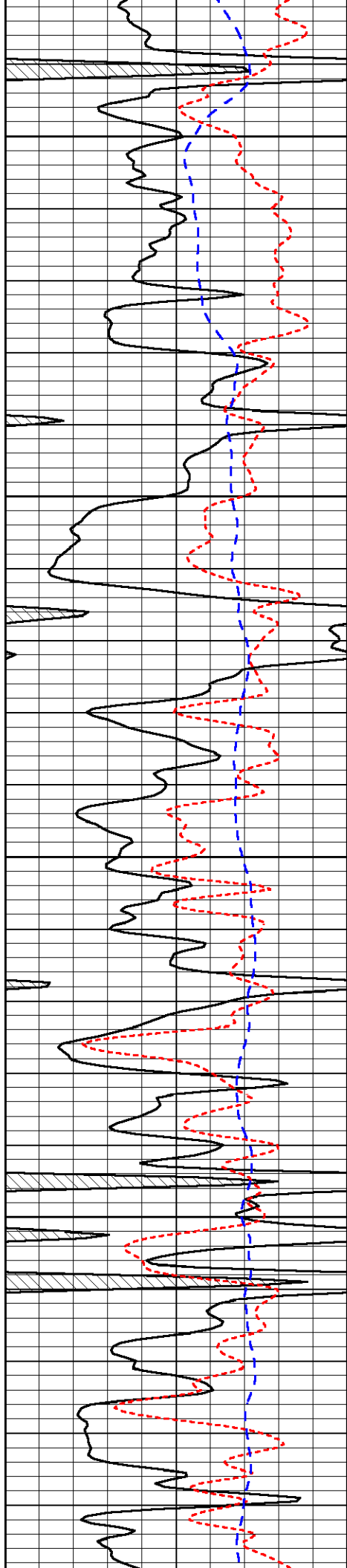


32

32

31

30

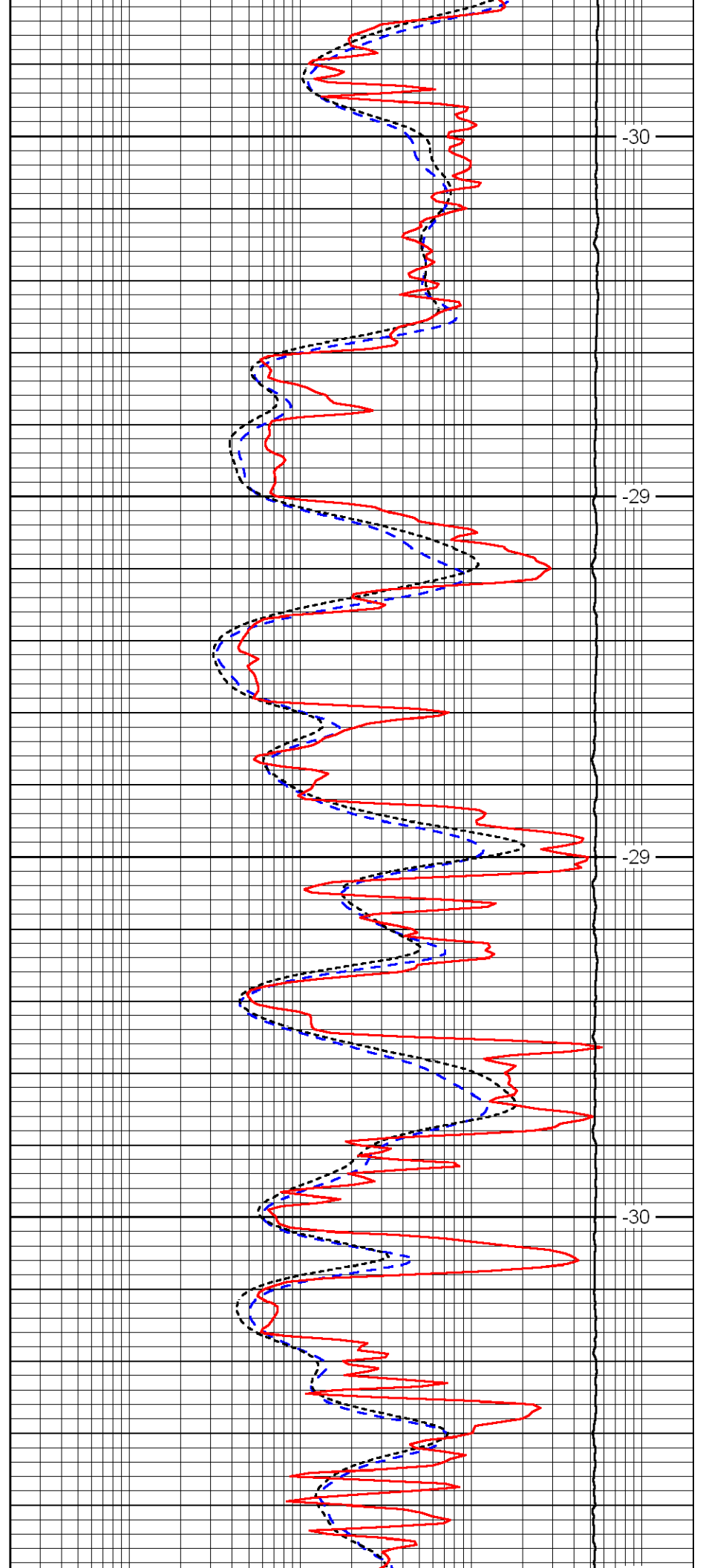


4550

4600

4650

4700

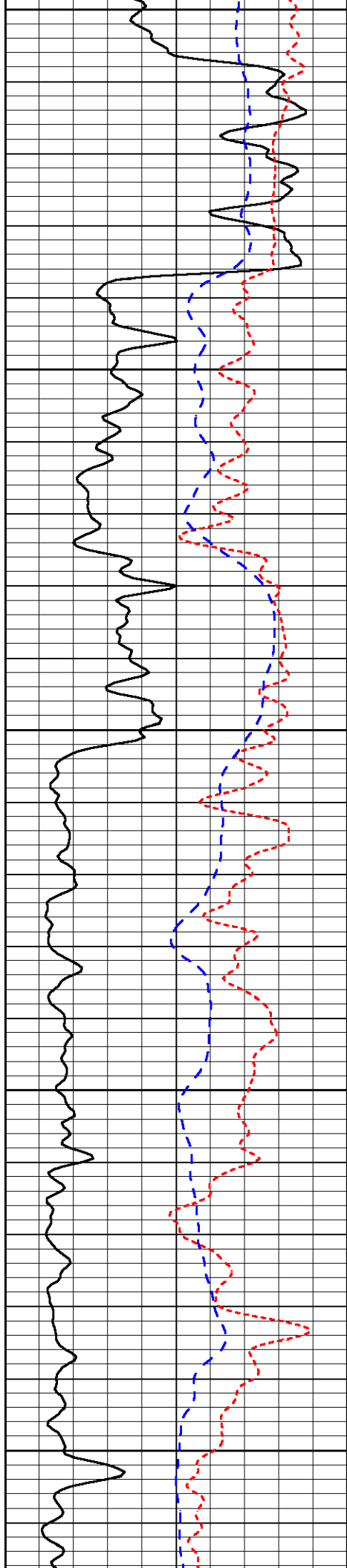


-30

-29

-29

-30



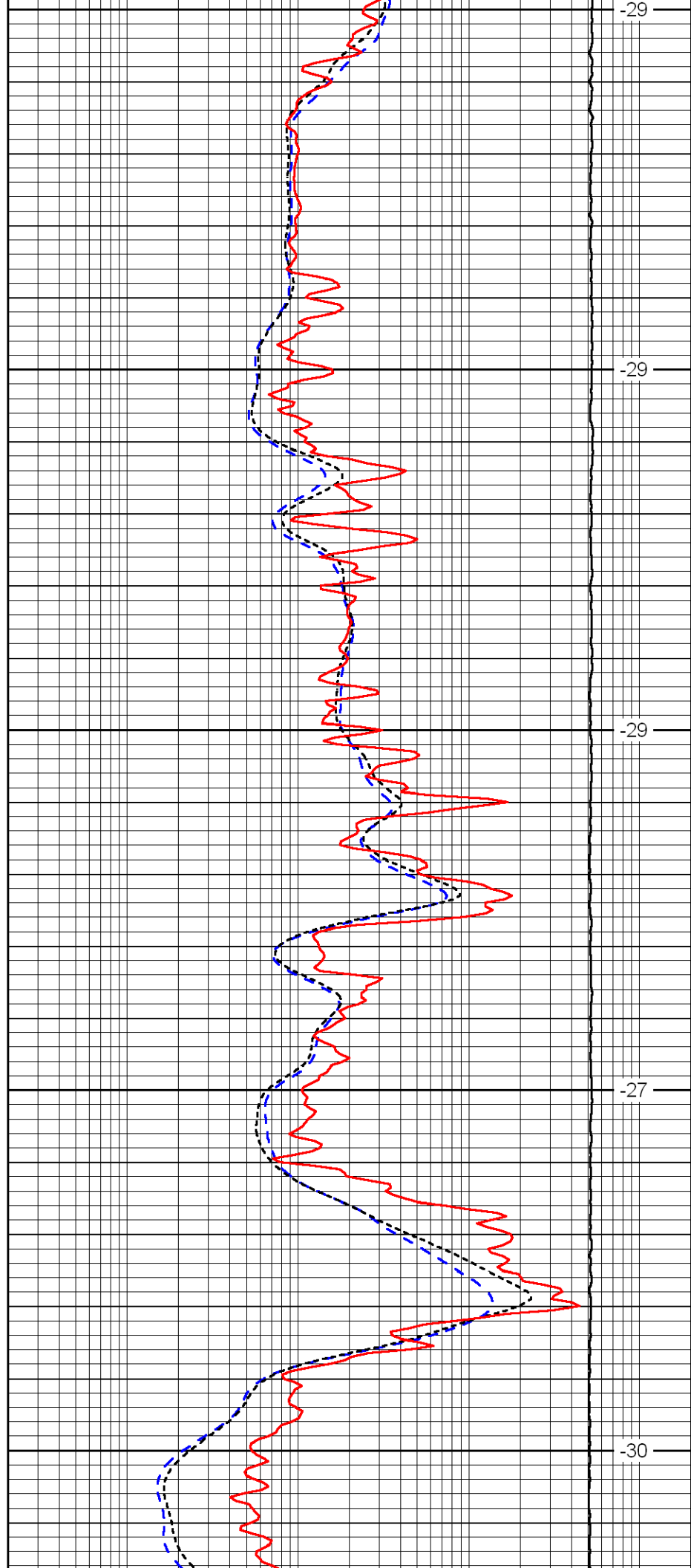
4750

4800

4850

4900

4950



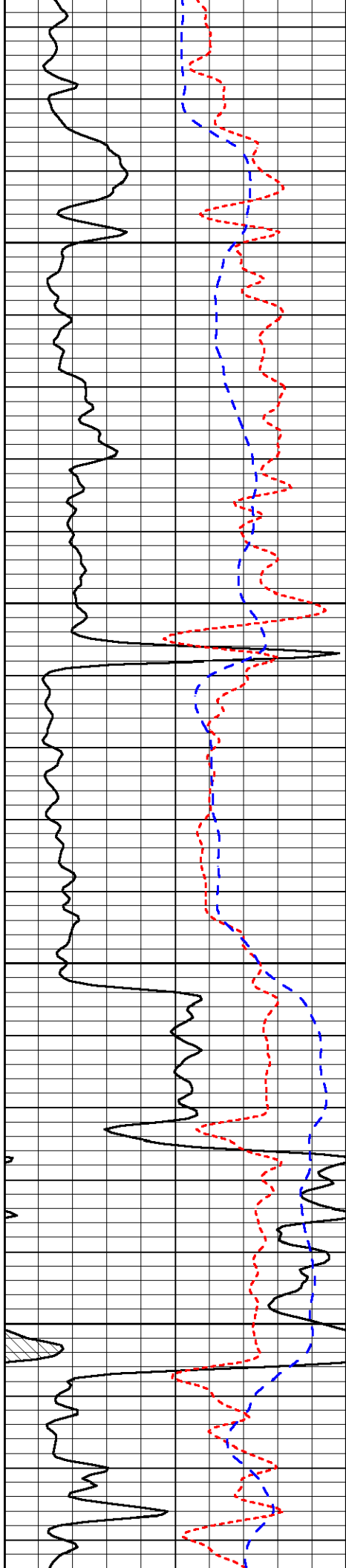
-29

-29

-29

-27

-30

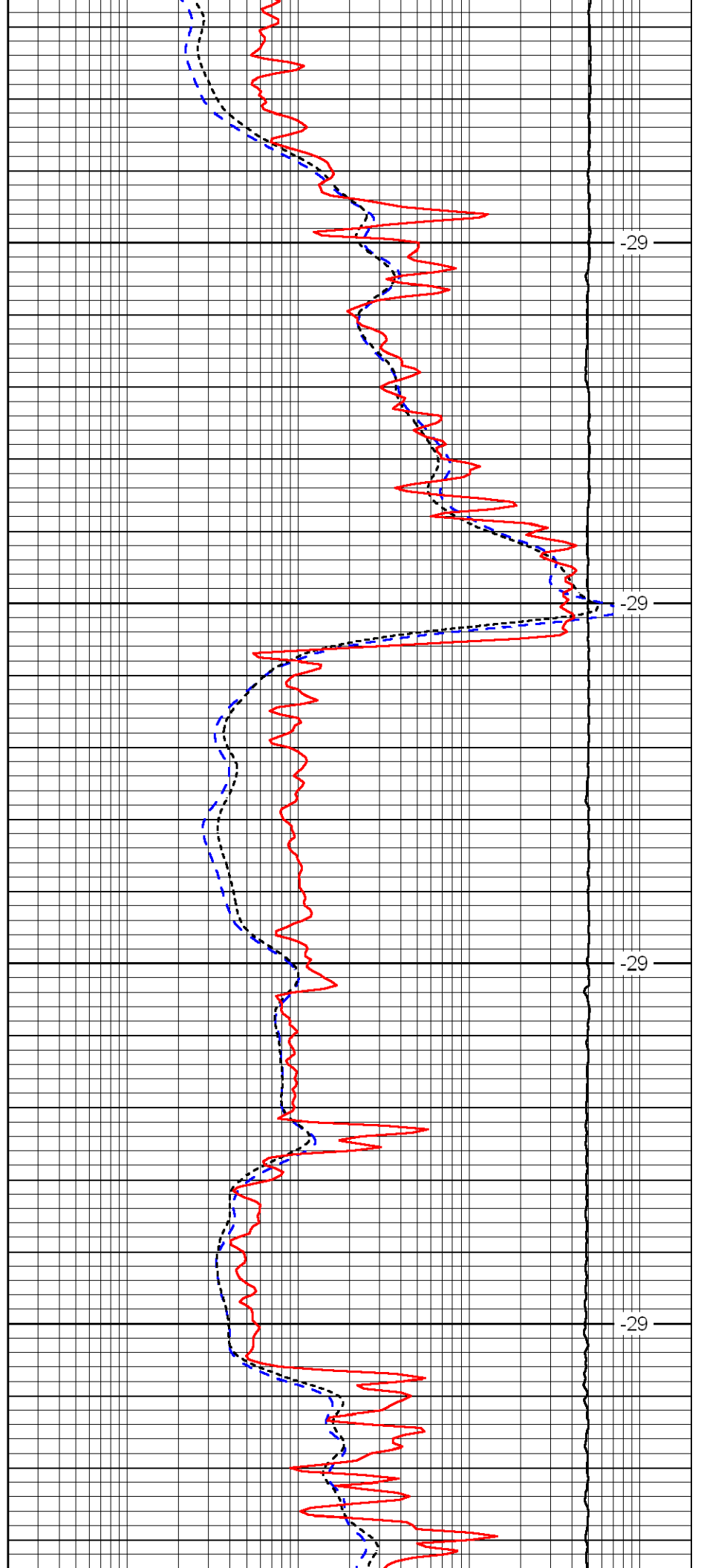


5000

5050

5100

5150

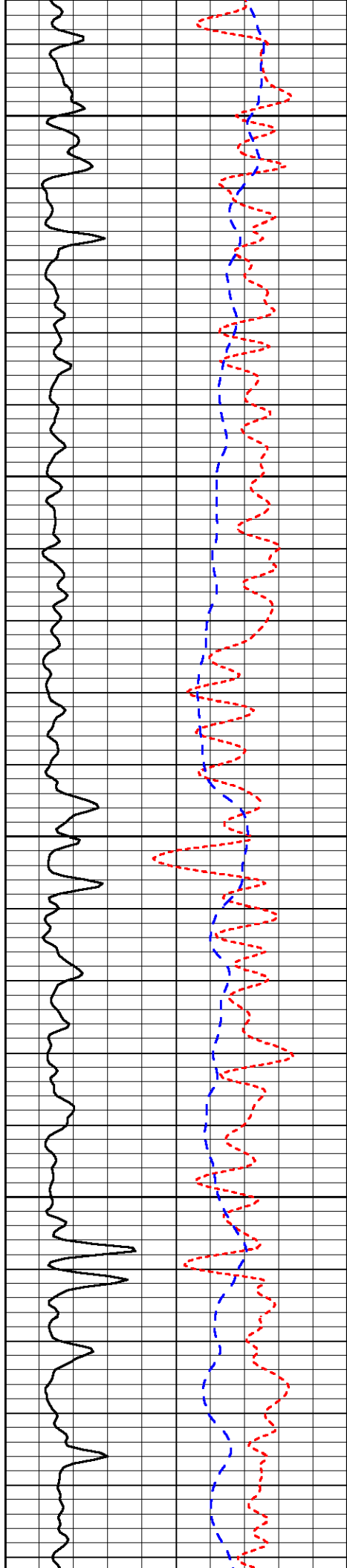


-29

-29

-29

-29



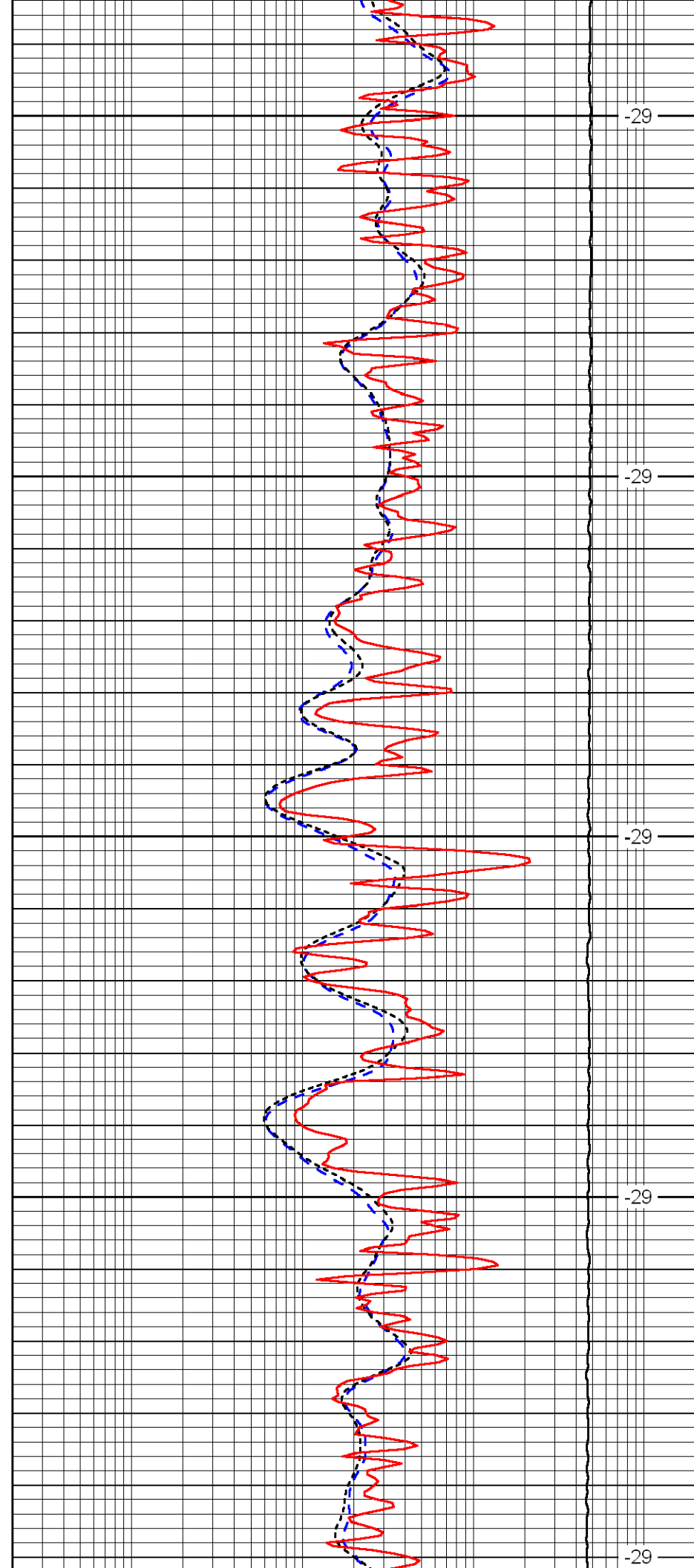
5200

5250

5300

5350

5400



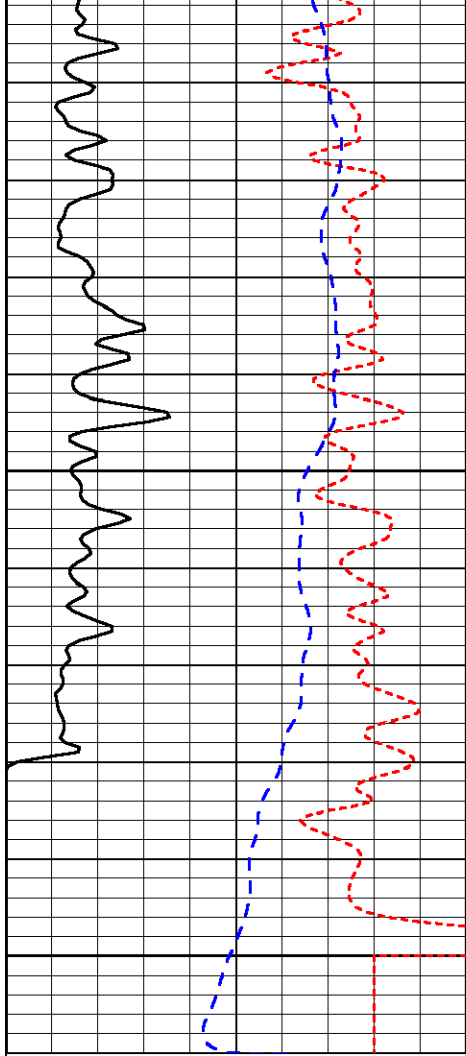
-29

-29

-29

-29

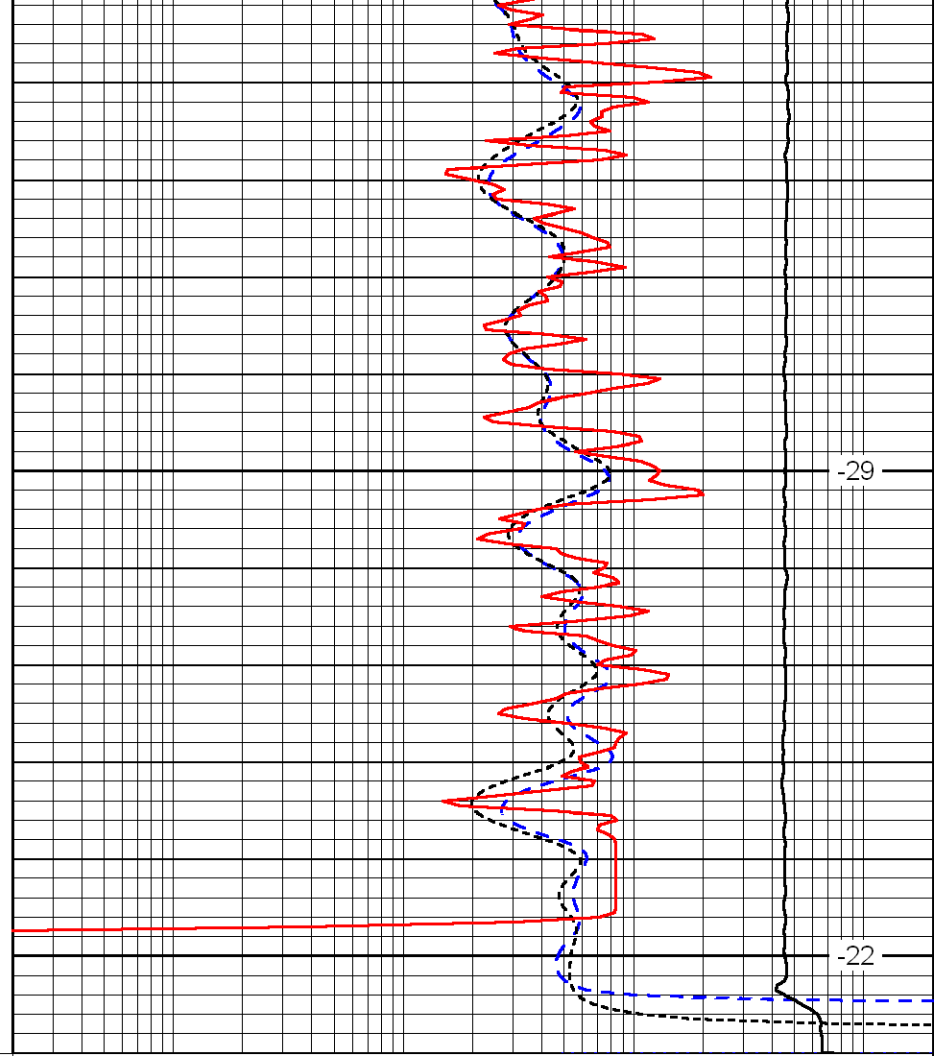
-29



5450

5500

0	Gamma Ray	150
-160	RXO/RT	40
-200	SP	0



-29

-22

0.2	Deep Resistivity	2000
0.2	Medium Resistivity	2000
0.2	Shallow Resistivity	2000
10000	Line Tension	0

LSPD