



**Borehole Compensated  
Sonic Log**

**DIGITAL LOG (785) 625-3858**

API No.	15-097-21,677-00-00
Company	L.D. Drilling, Inc.
Well	Anthony No. 1A-34
Field	
County	Kiowa
State	Kansas
Location	NE NE NW 330' FNL & 2,310' FWL
Sec: 34	Twp: 27S Rge: 18W
Permament Datum	Ground Level Elevation 2199
Log Measured From	Kelly Bushing 10 Ft. Above Perm. Datum
Drilling Measured From	Kelly Bushing
Date	10/23/2010
Run Number	Two
Type Log	BHC Sonic
Depth Driller	5500
Depth Logger	5504
Bottom Logged Interval	5493
Top Logged Interval	500
Type Fluid In Hole	Chemical
Salinity, PPM CL	5000
Density	9.4
Level	Full
Max. Rec. Temp. F	131
Operating Rig Time	5 Hours
Equipment -- Location	10 Hays
Recorded By	J. Long
Witnessed By	Derek Patterson

Other Services	CNL/CDL DIL/MEL
Elevation	K.B. 2209 D.F. 2199 G.L. 2199

Borehole Record		Casing Record					
Run No	Bit	From	To	Size	Wgt.	From	To
One	12.25	00	505	8.625	23#	00	505
Two	7.875	505	TD				

<<< Fold Here >>>

All interpretations are opinions based on inferences from electrical or other measurements and we cannot and do not guarantee the accuracy or correctness of any interpretation, and we shall not, except in the case of gross or willful negligence on our part, be liable or responsible for any loss, costs, damages, or expenses incurred or sustained by anyone resulting from any interpretation made by any of our officers, agents or employees. These interpretations are also subject to our general terms and conditions set out in our current Price Schedule.

**Comments**

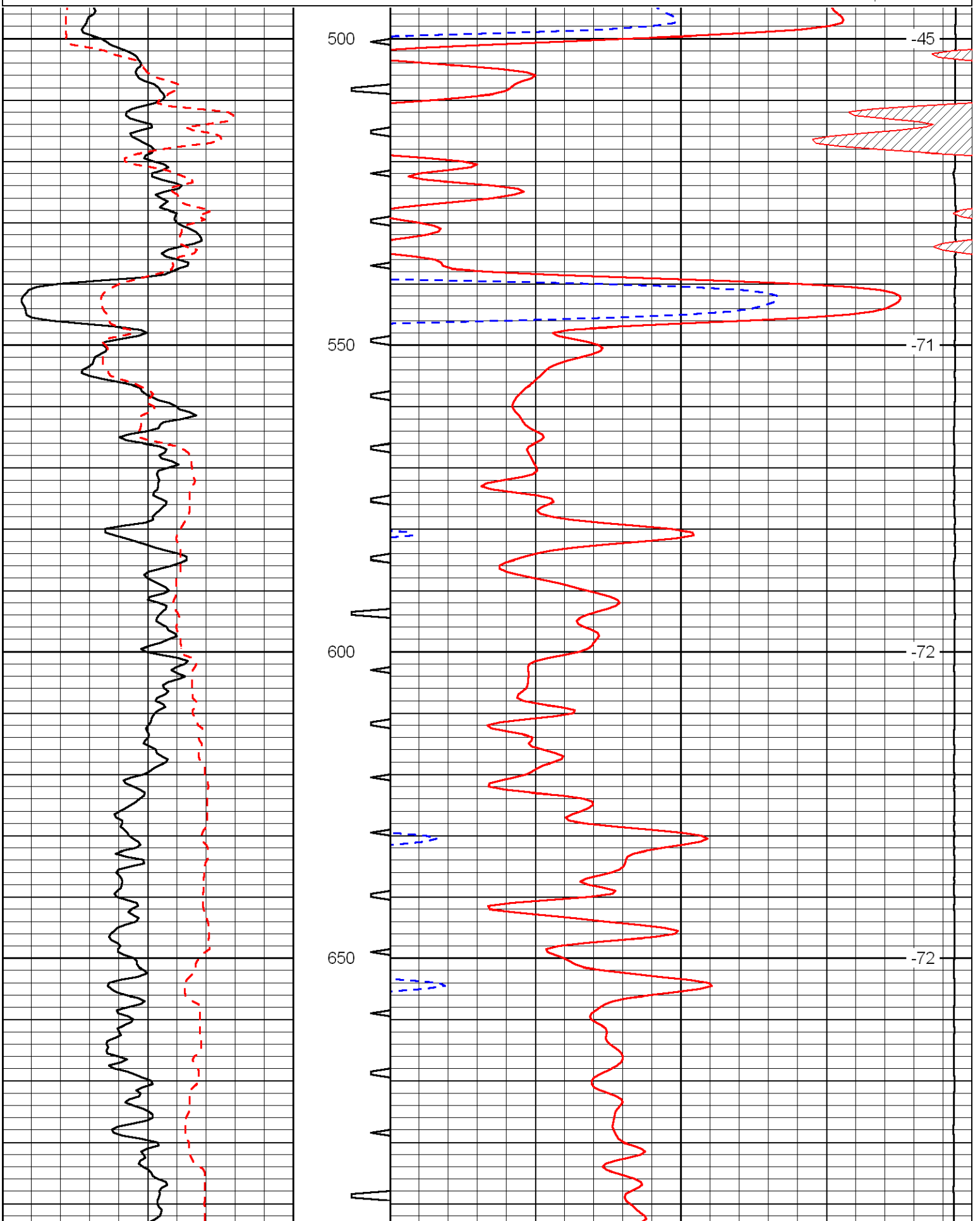
Thank you for using Log-Tech, Inc.  
(785) 625-3858

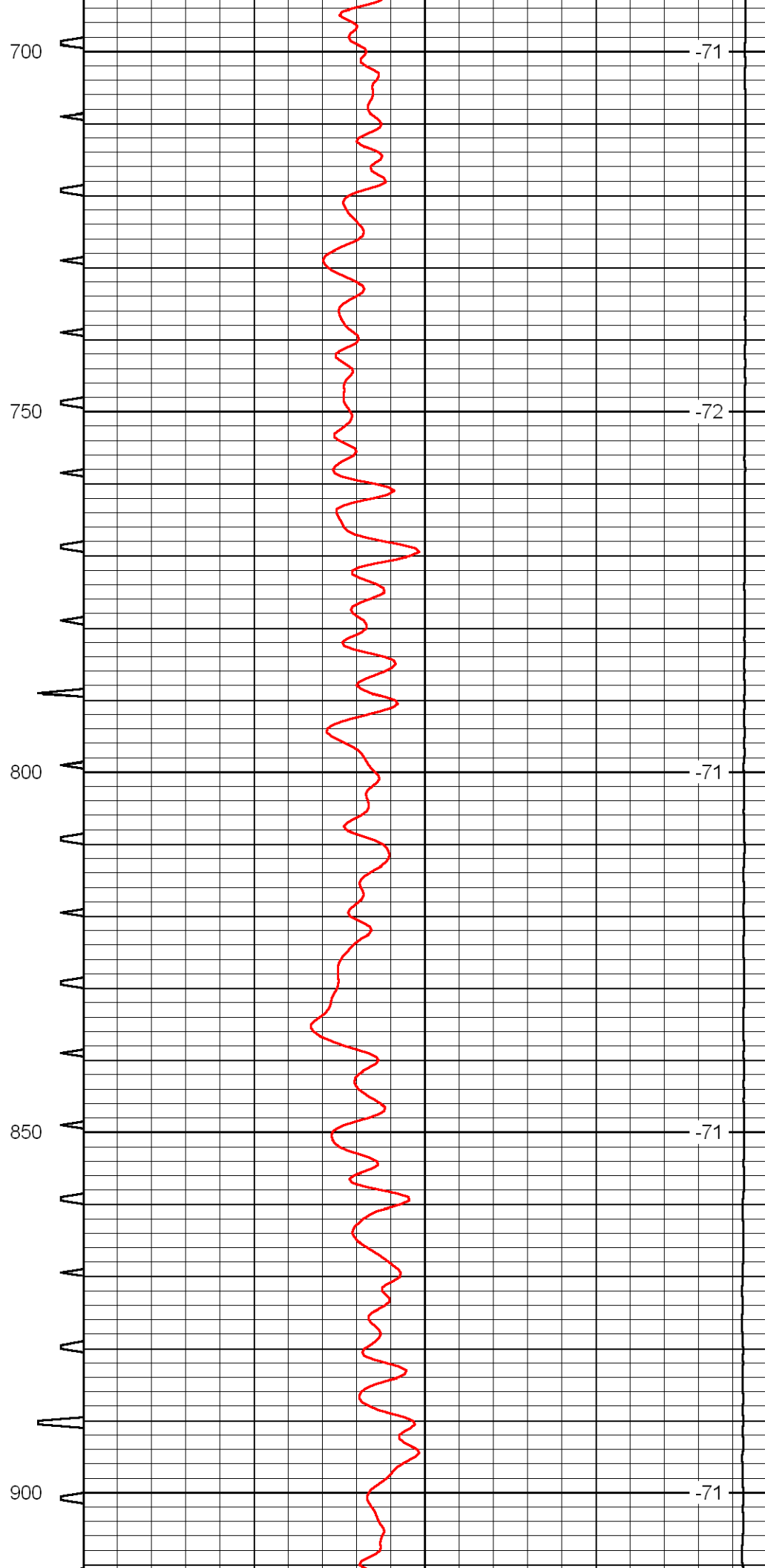
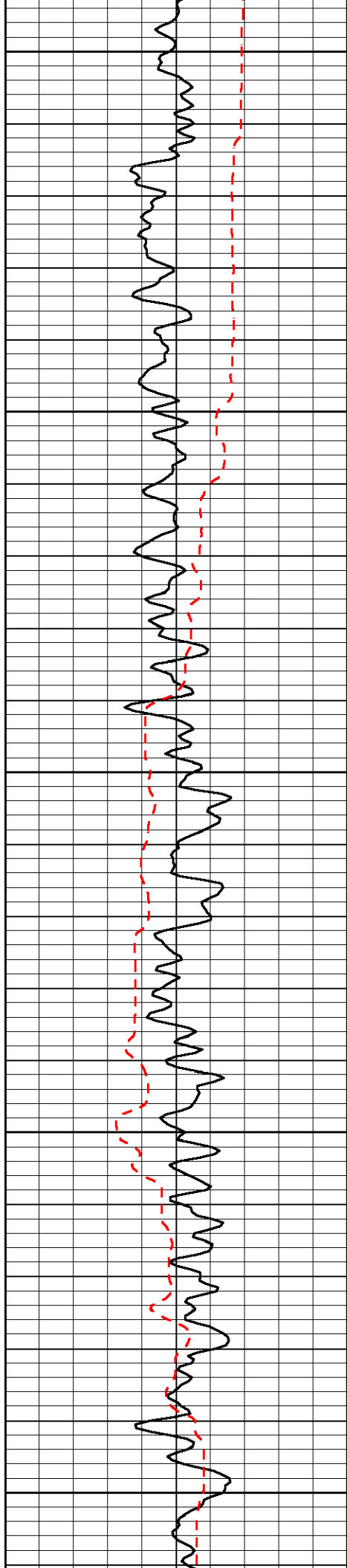
Greensburg, 1 East to Avenue 33, 2 1/2 North to Road G, 1 1/2 West, 1 North, East Into by Mailbox

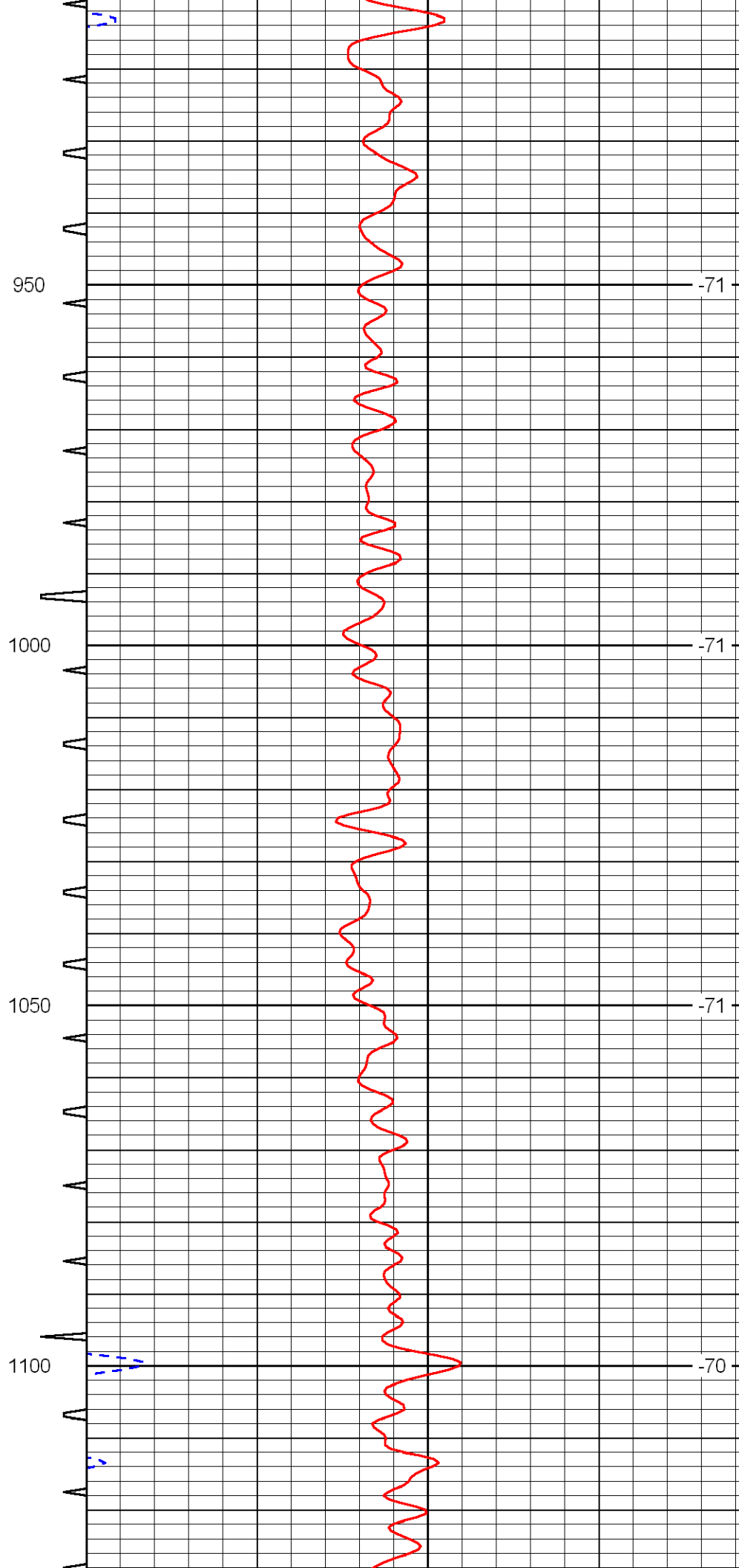
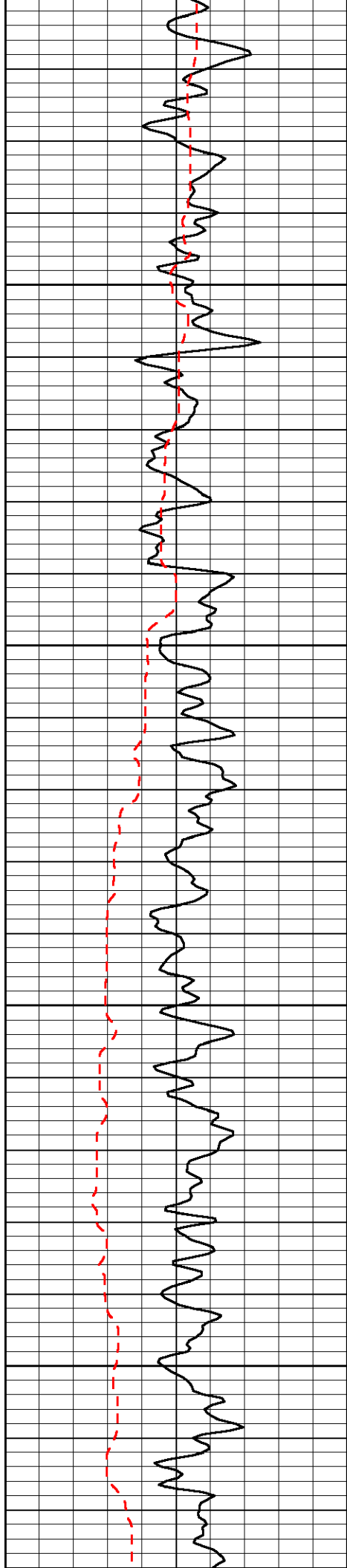
Database File: Id\_anthony\_1a-34hd.db  
 Dataset Pathname: dil/ldstck  
 Presentation Format: sonic  
 Dataset Creation: Sun Oct 24 03:23:53 2010  
 Charted by: Depth in Feet scaled 1:240

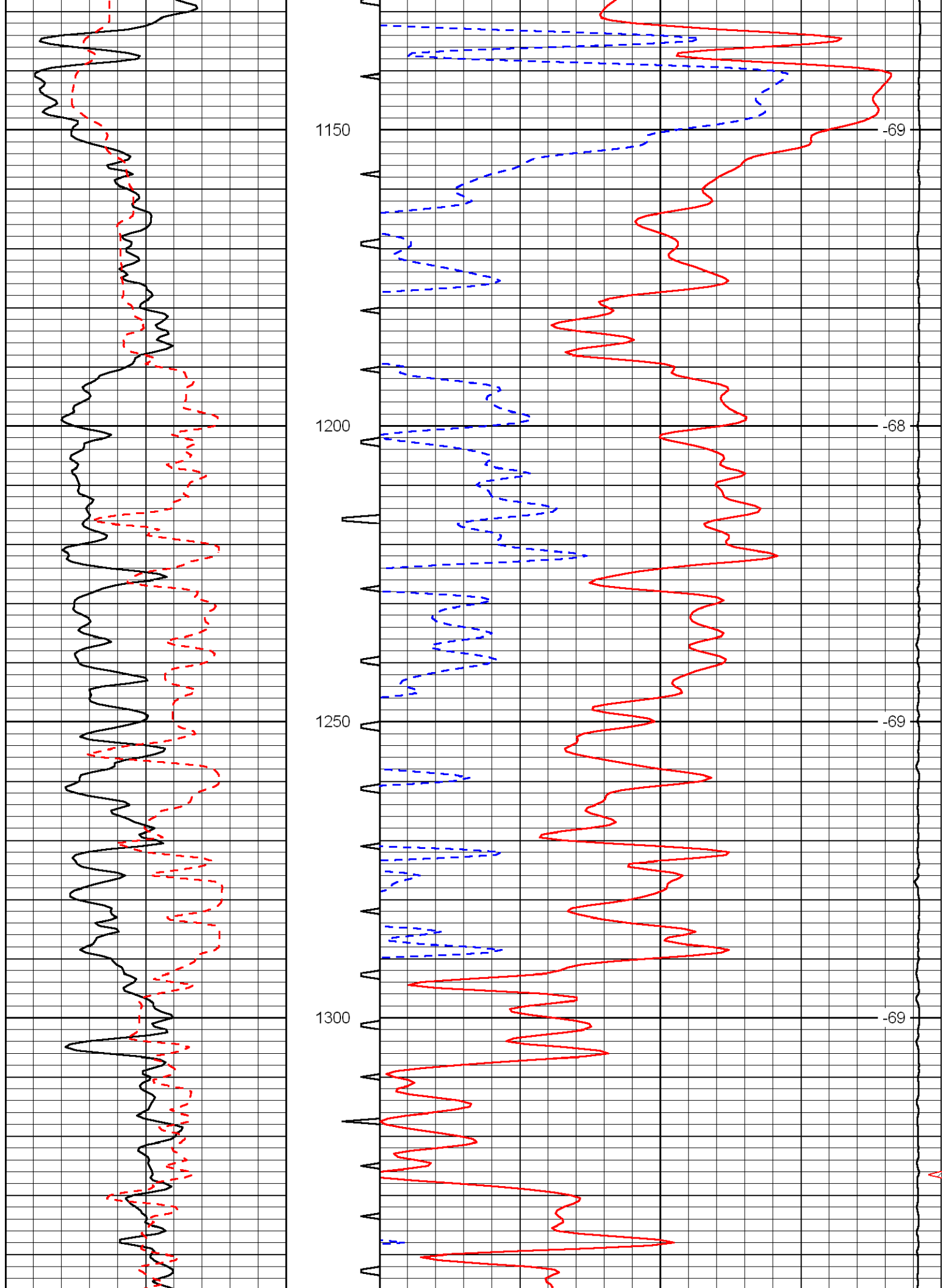
0	Gamma Ray	150	Sonic Int	140	Delta Time (usec/ft)	40
150	Gamma Ray	300	5	0	Sonic Porosity	-10
6	dCAL (GAPI)	16		15000	LTEN (lb)	0

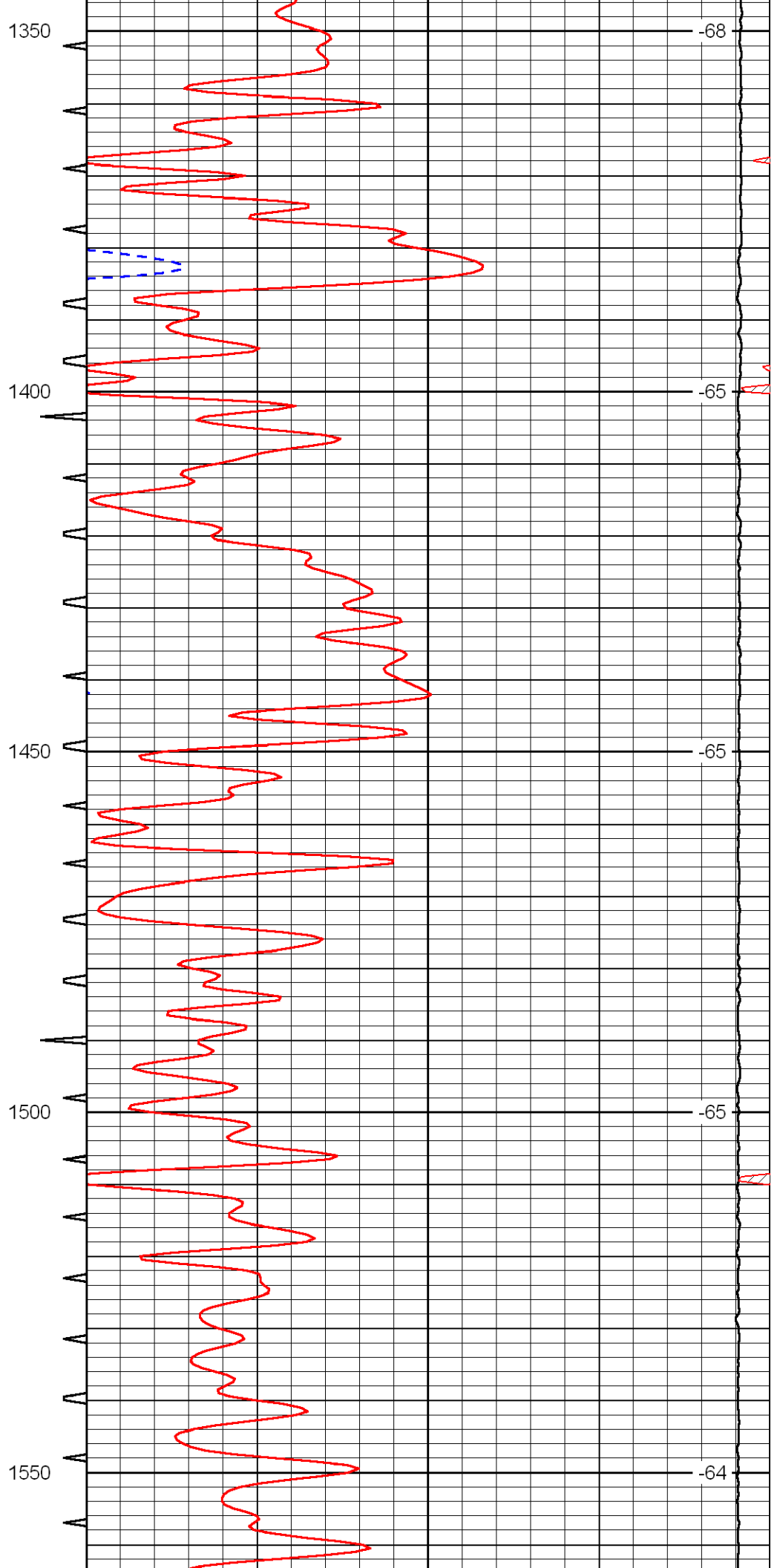
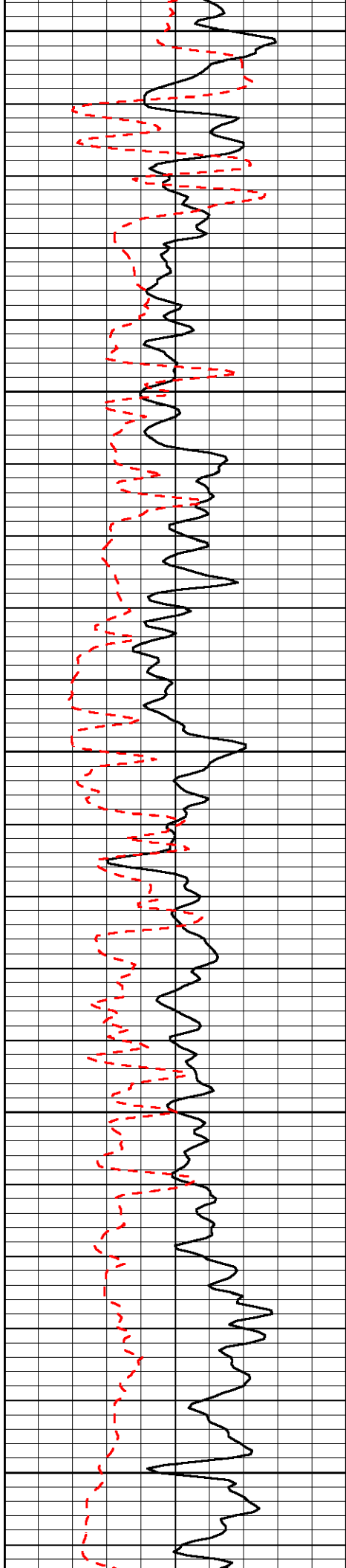
LSPD

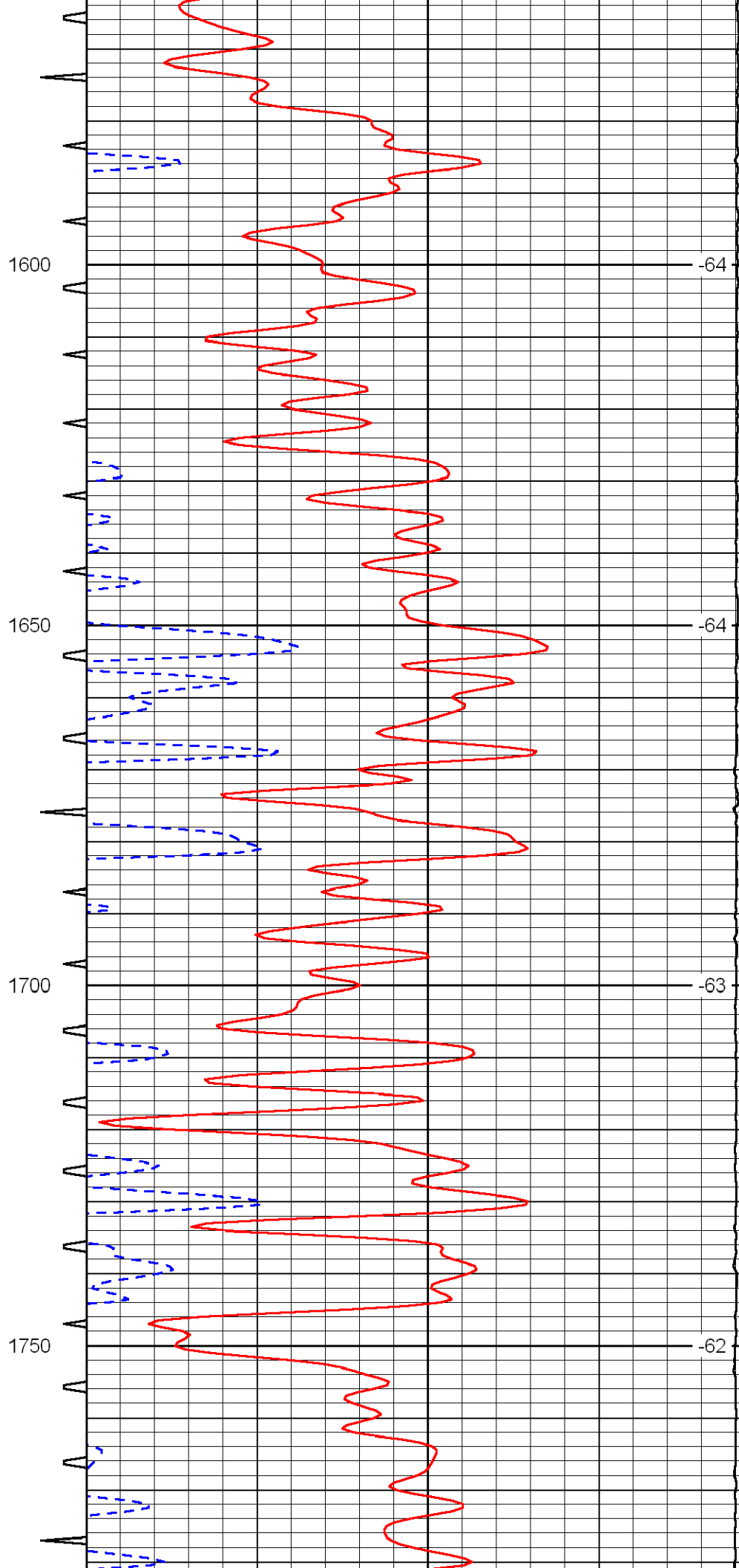
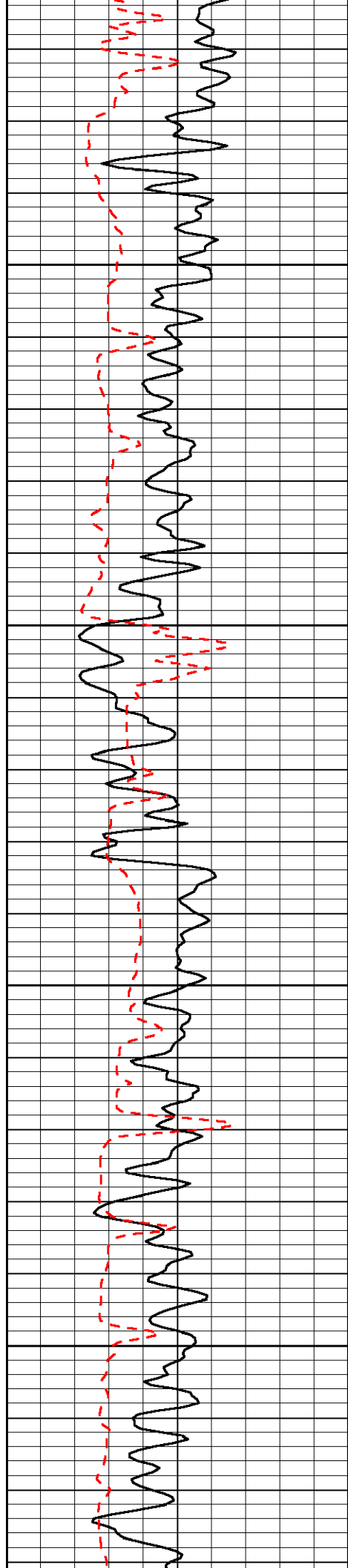


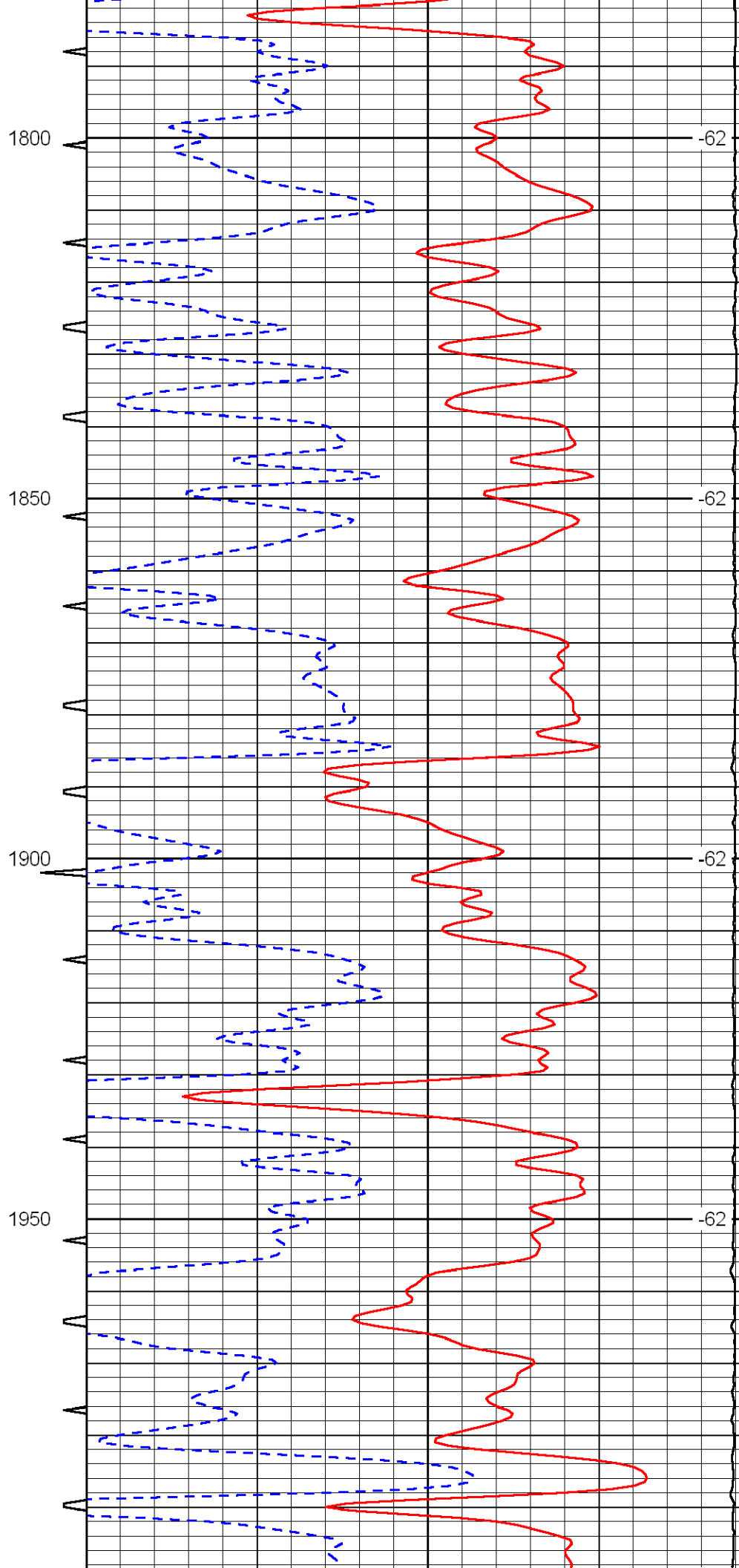
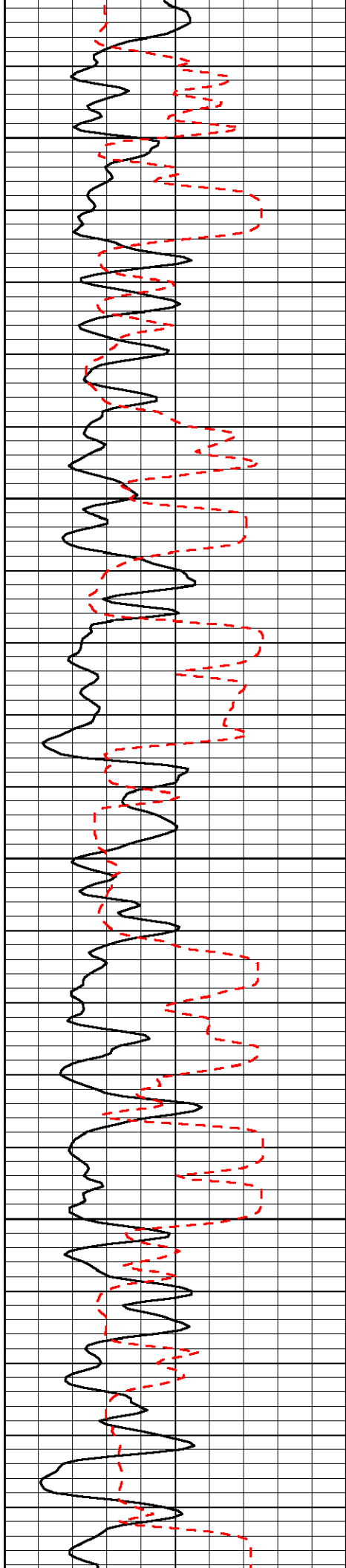


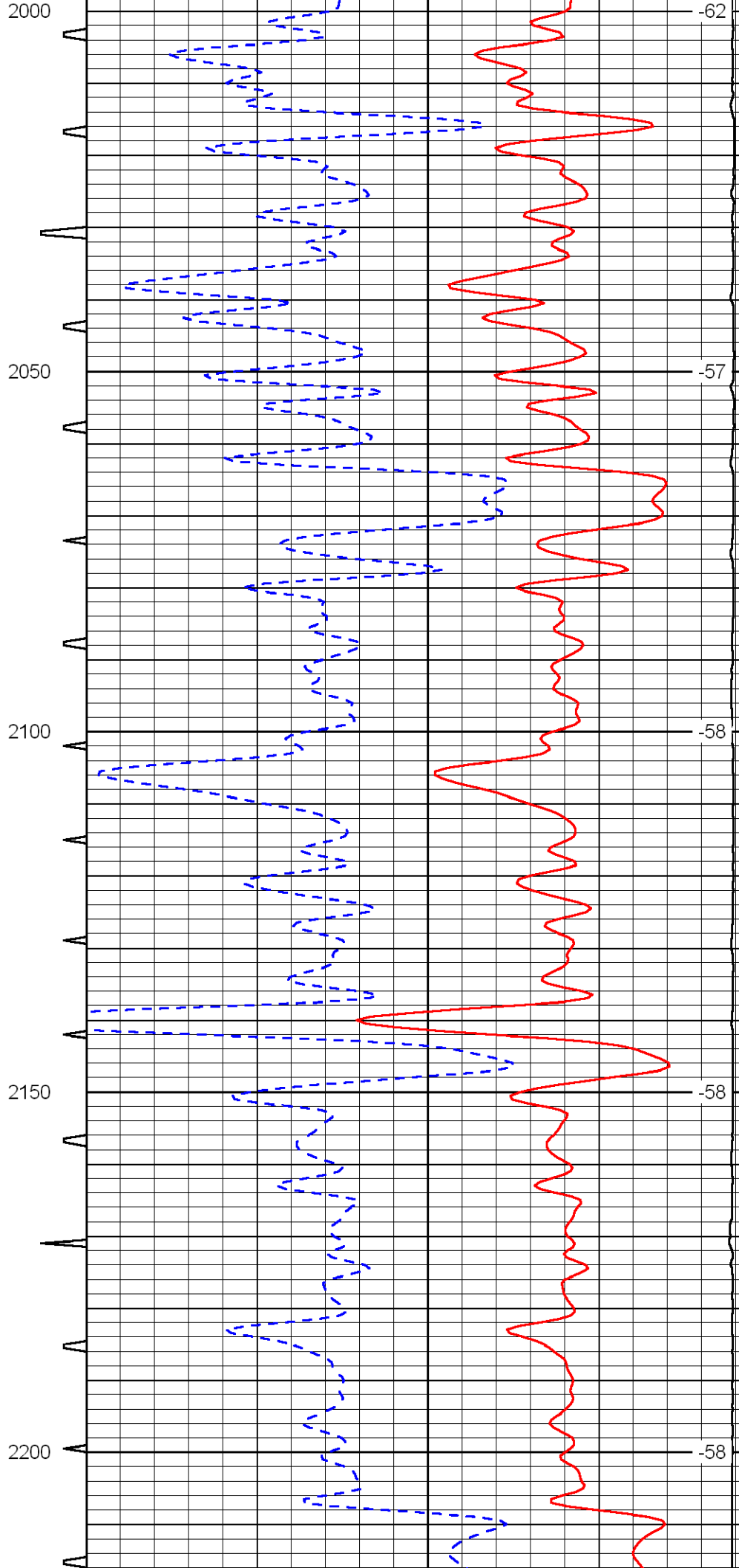
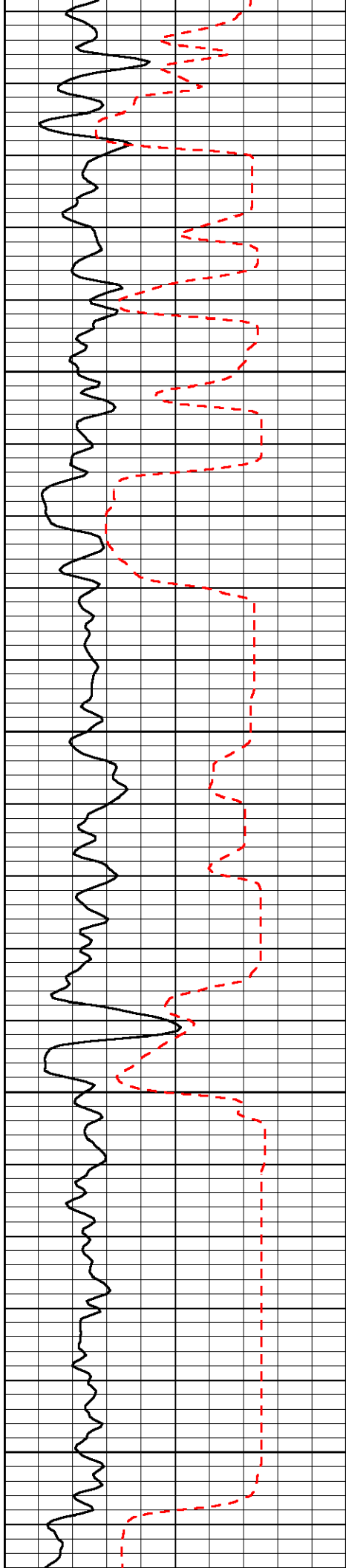


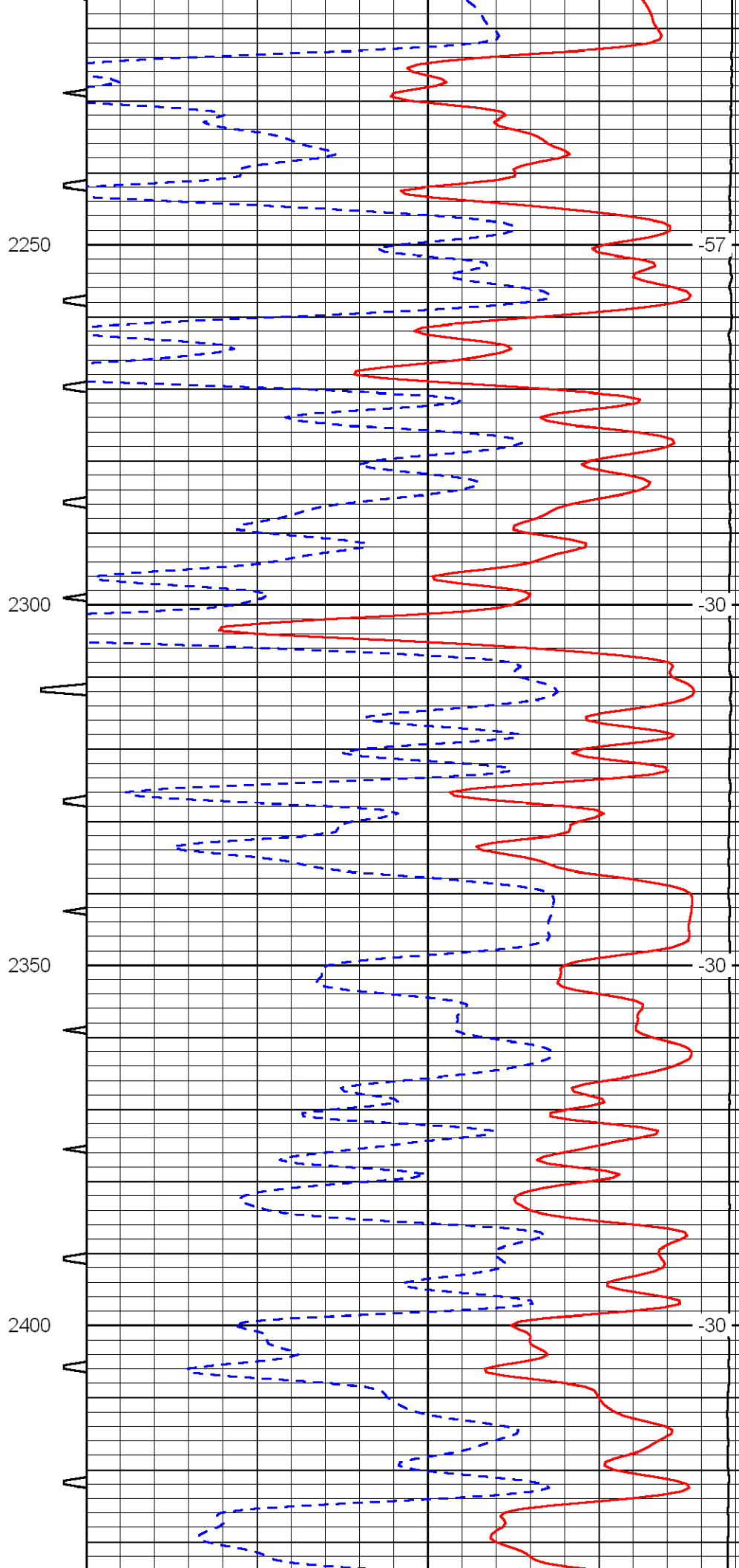
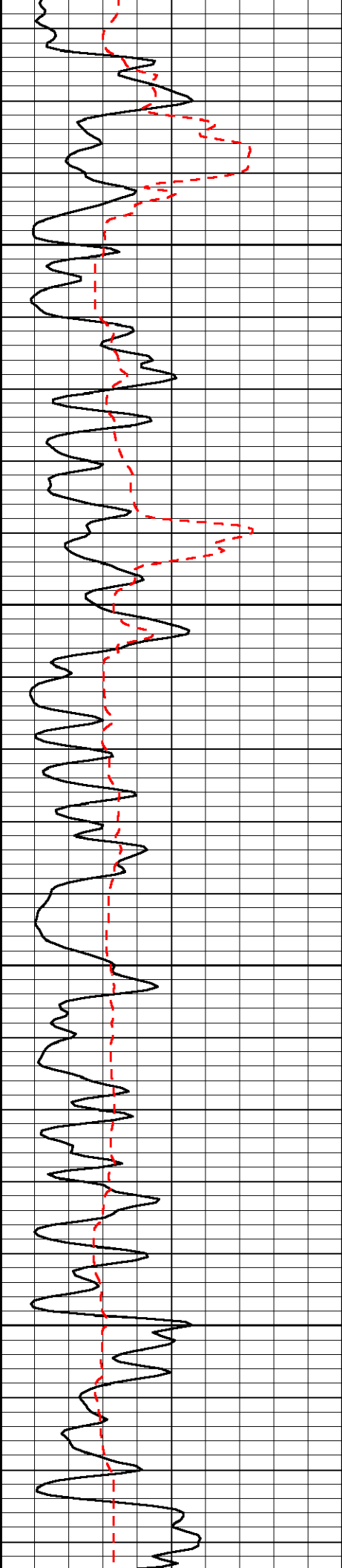


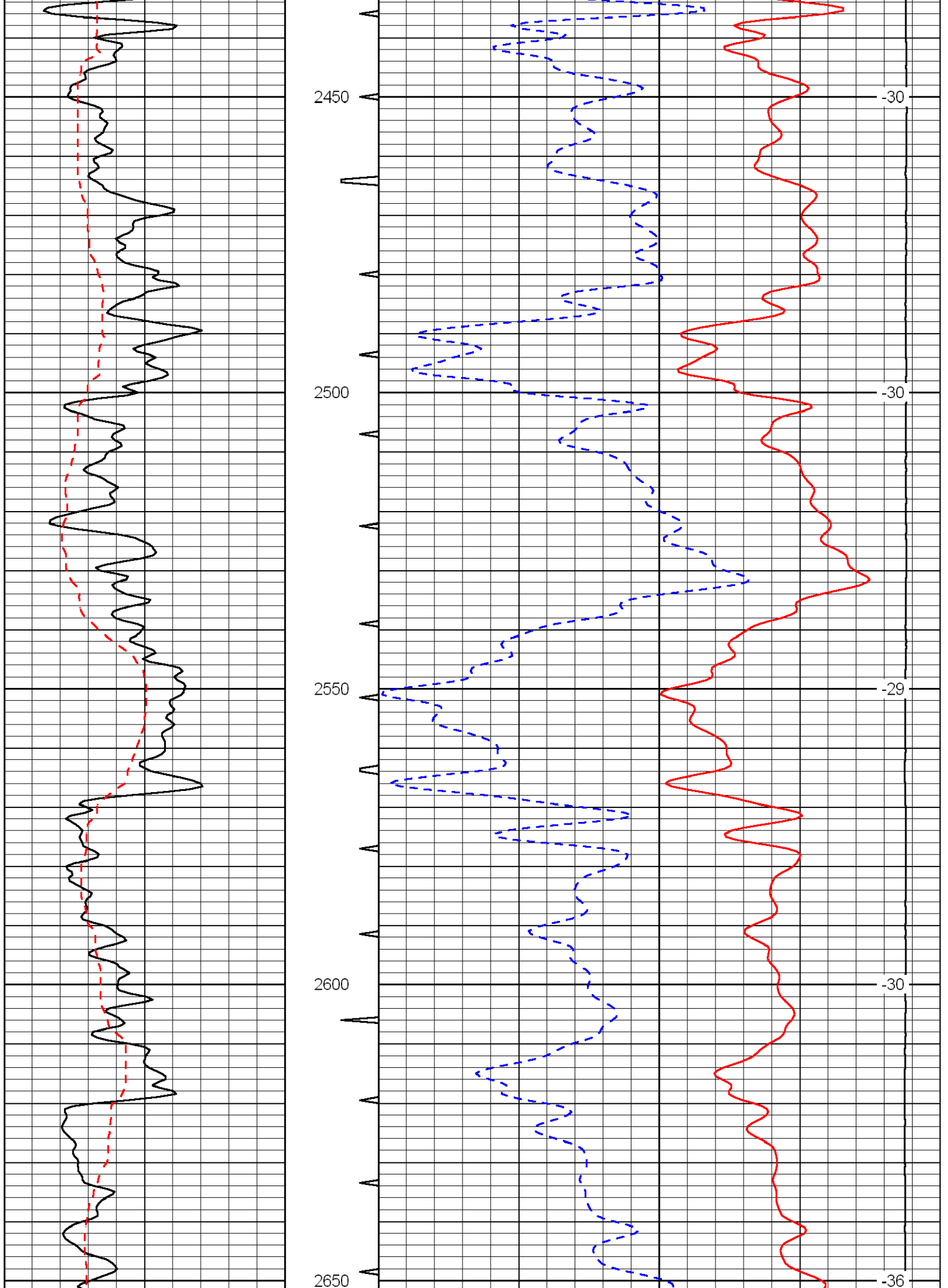


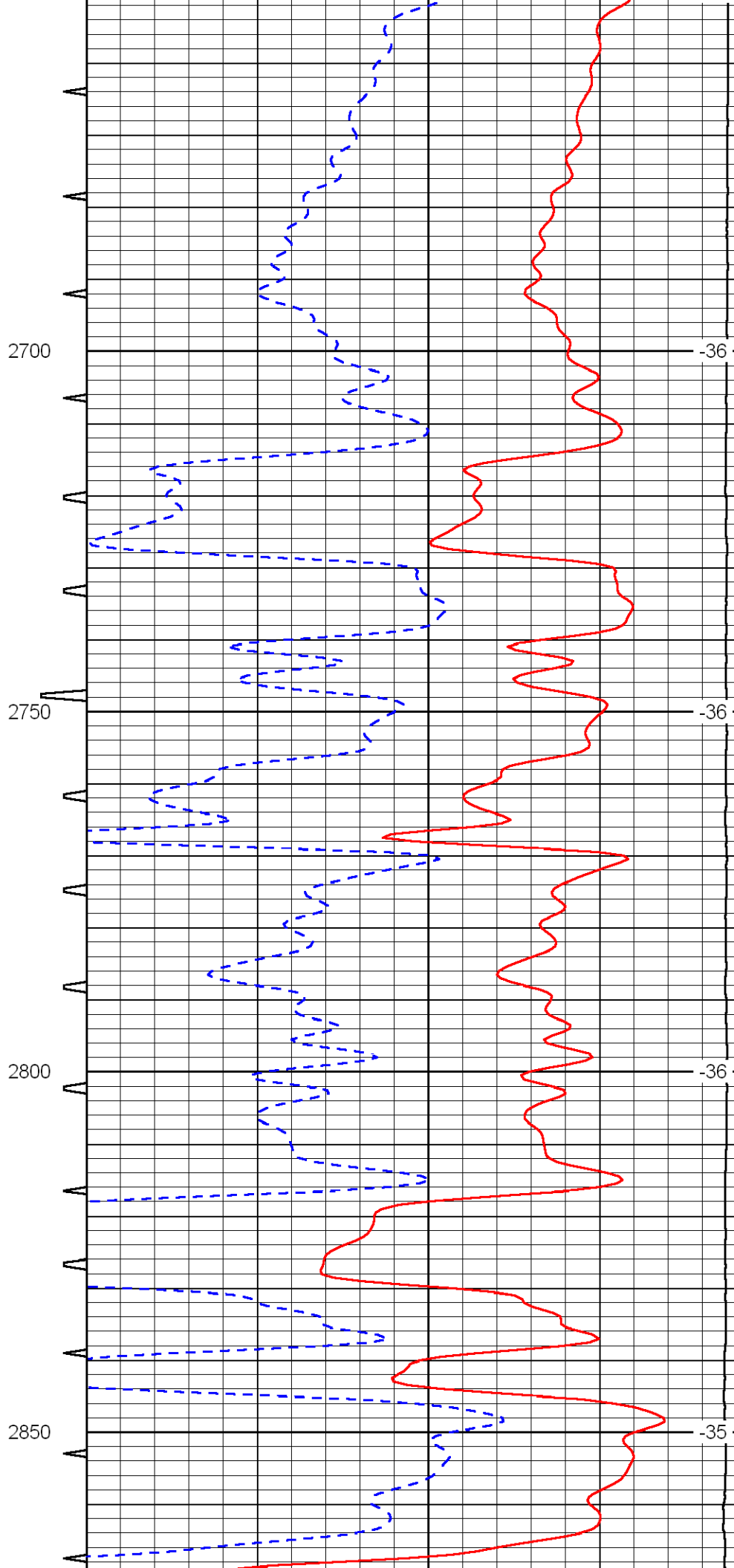
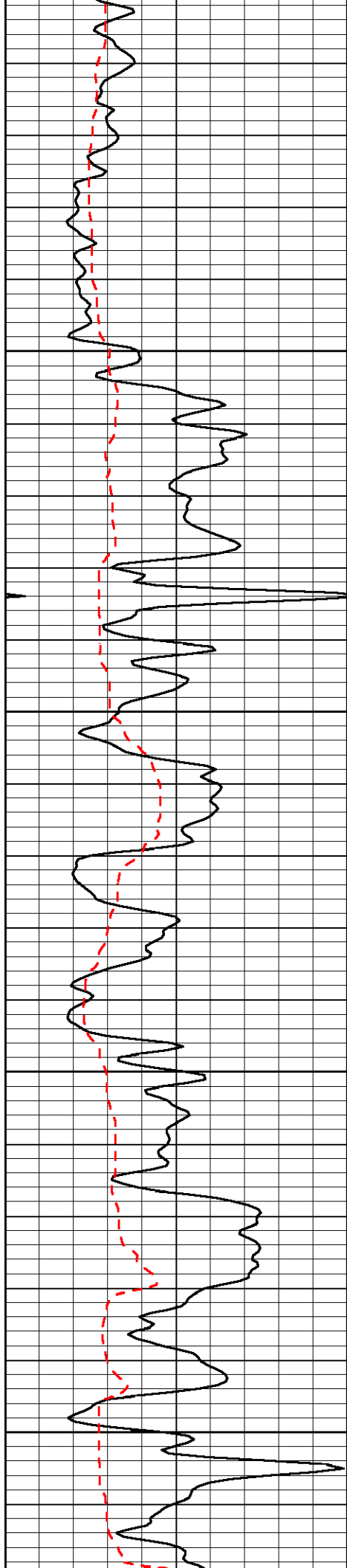


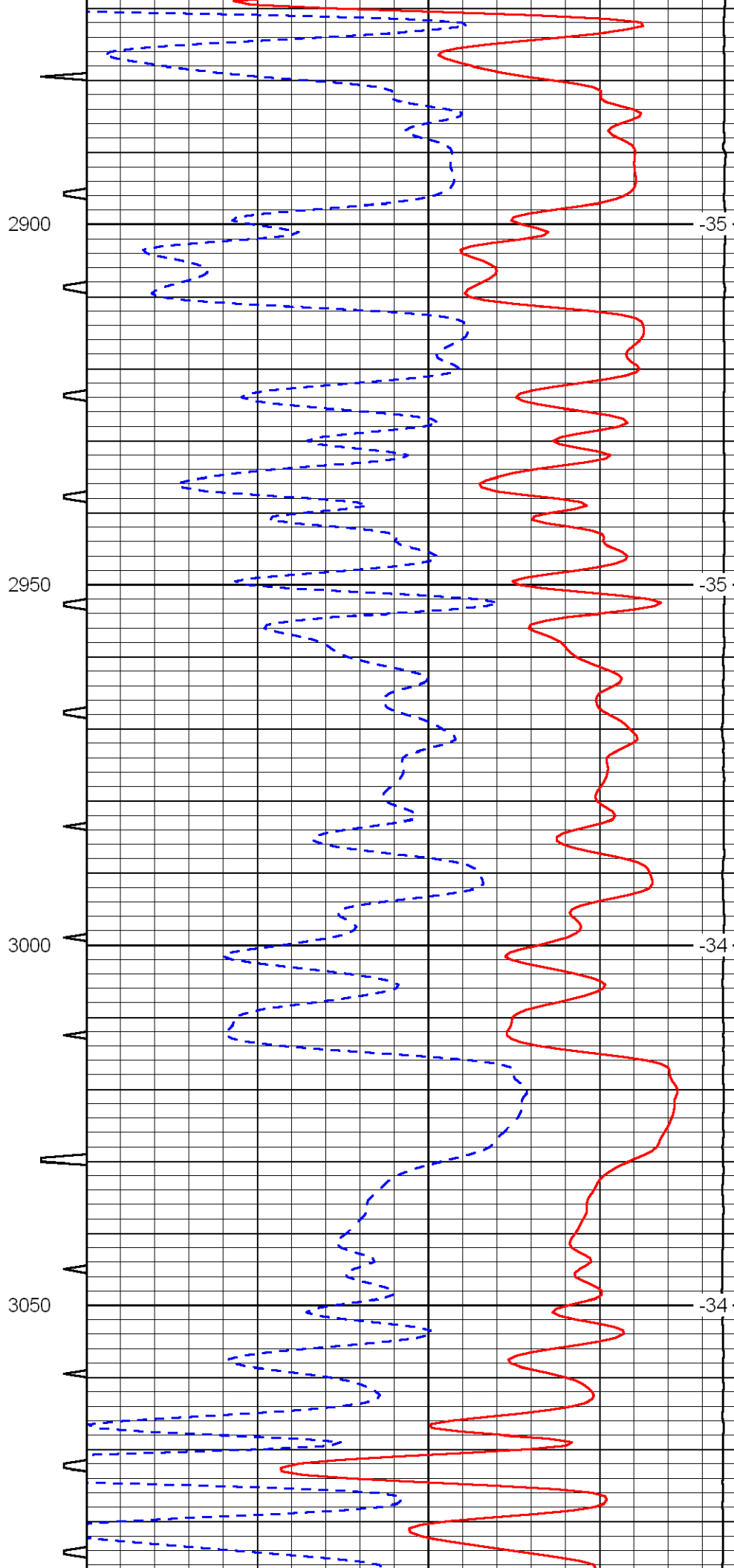
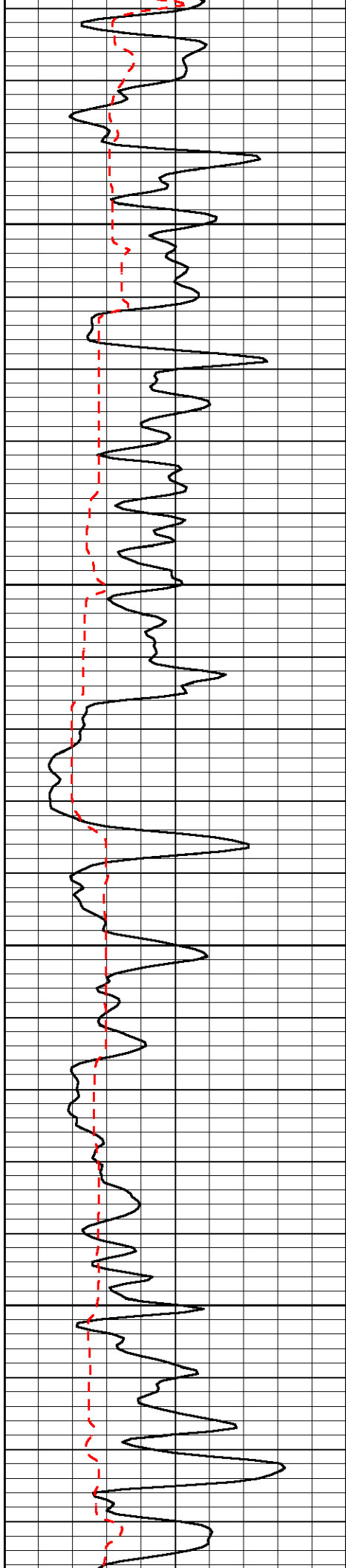


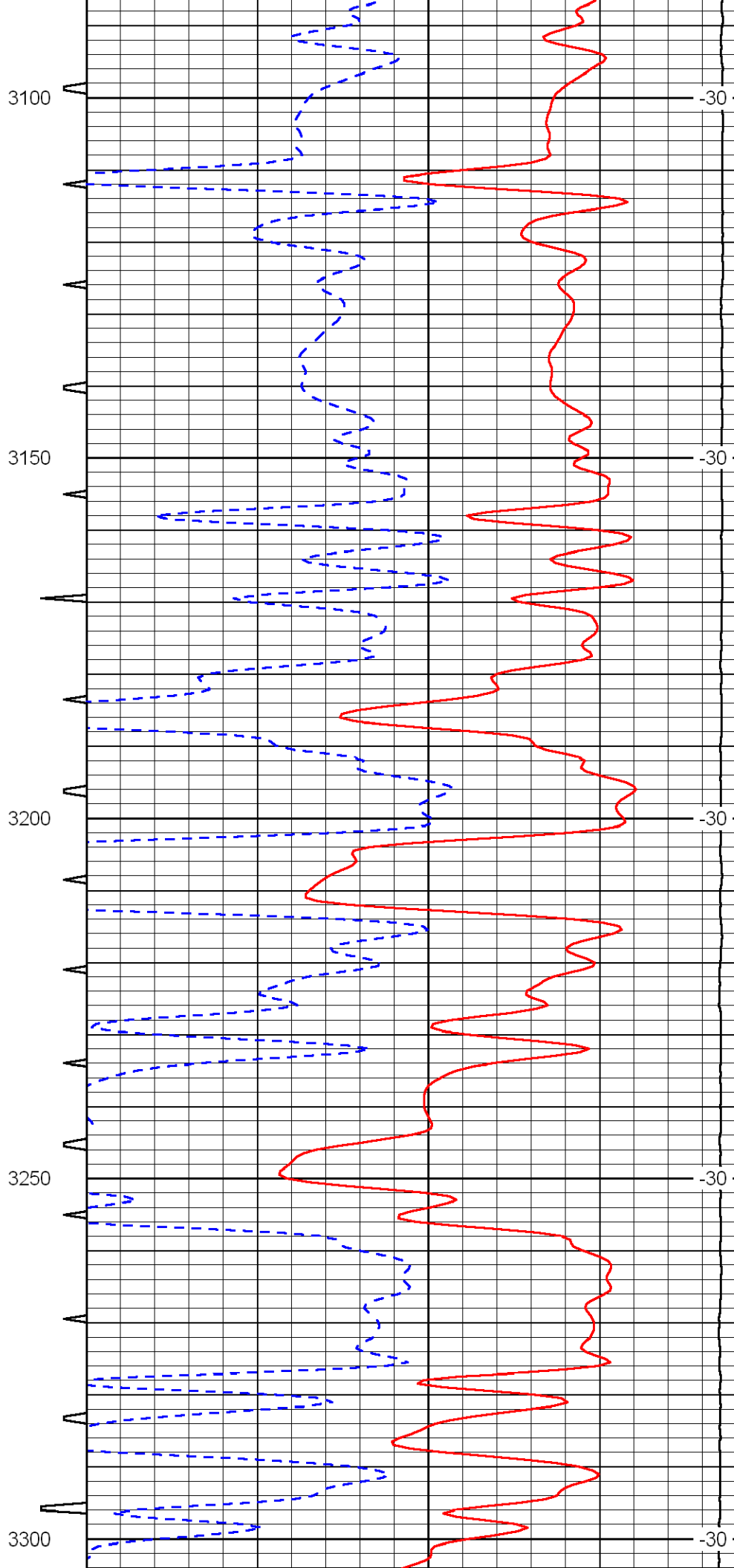
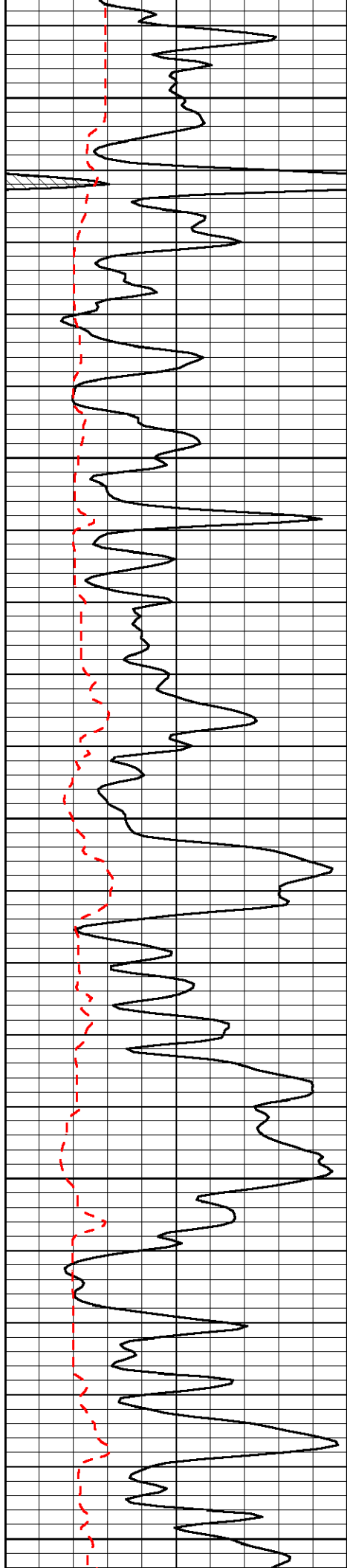


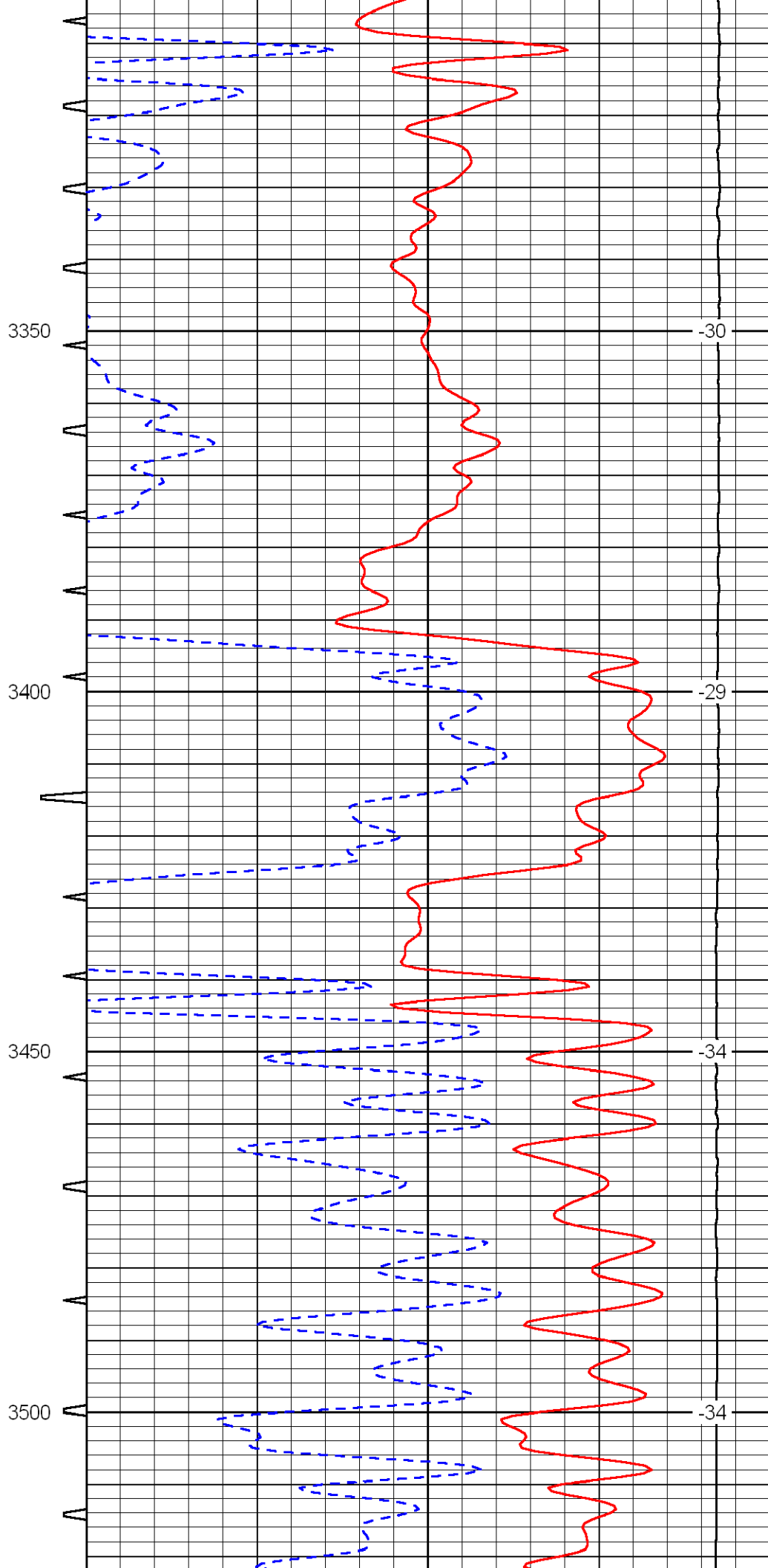
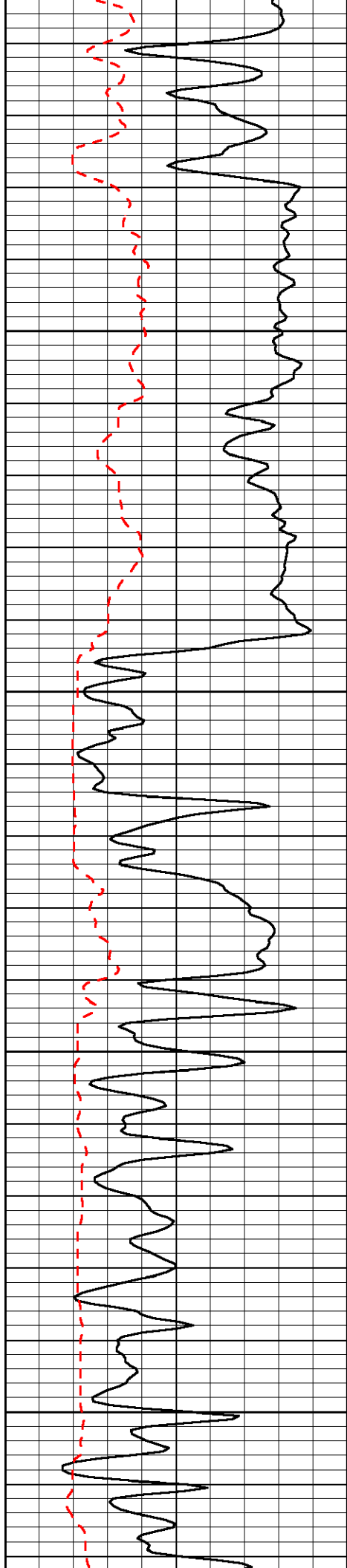


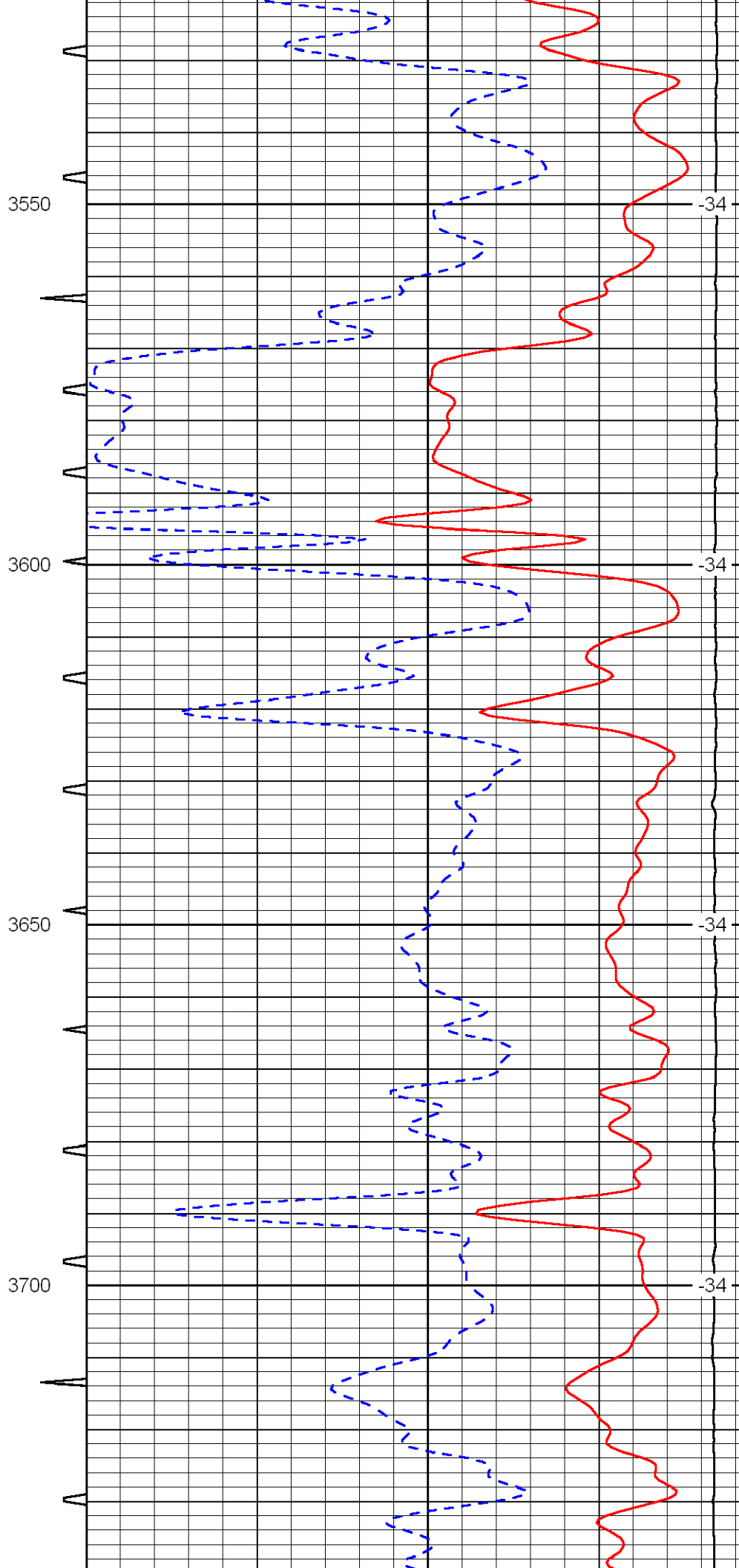
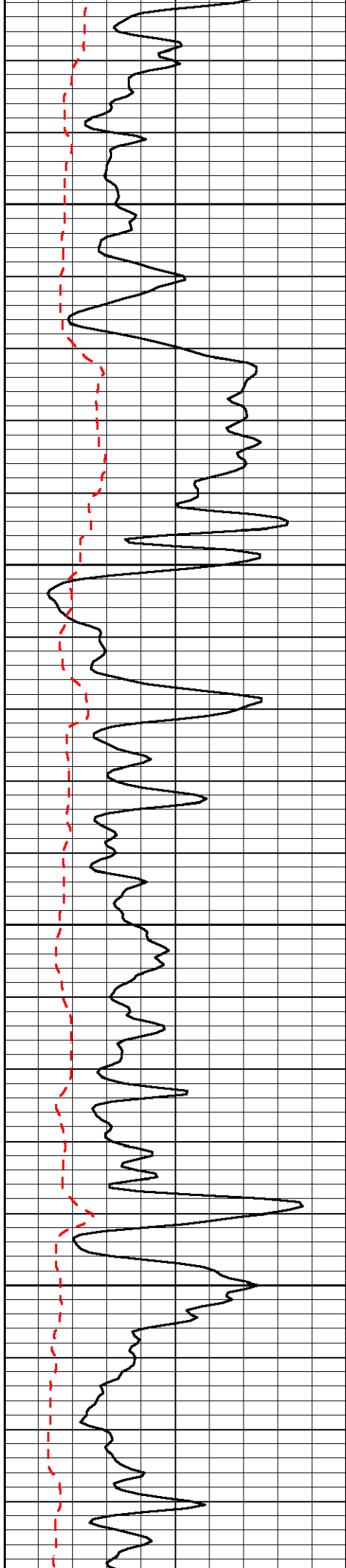


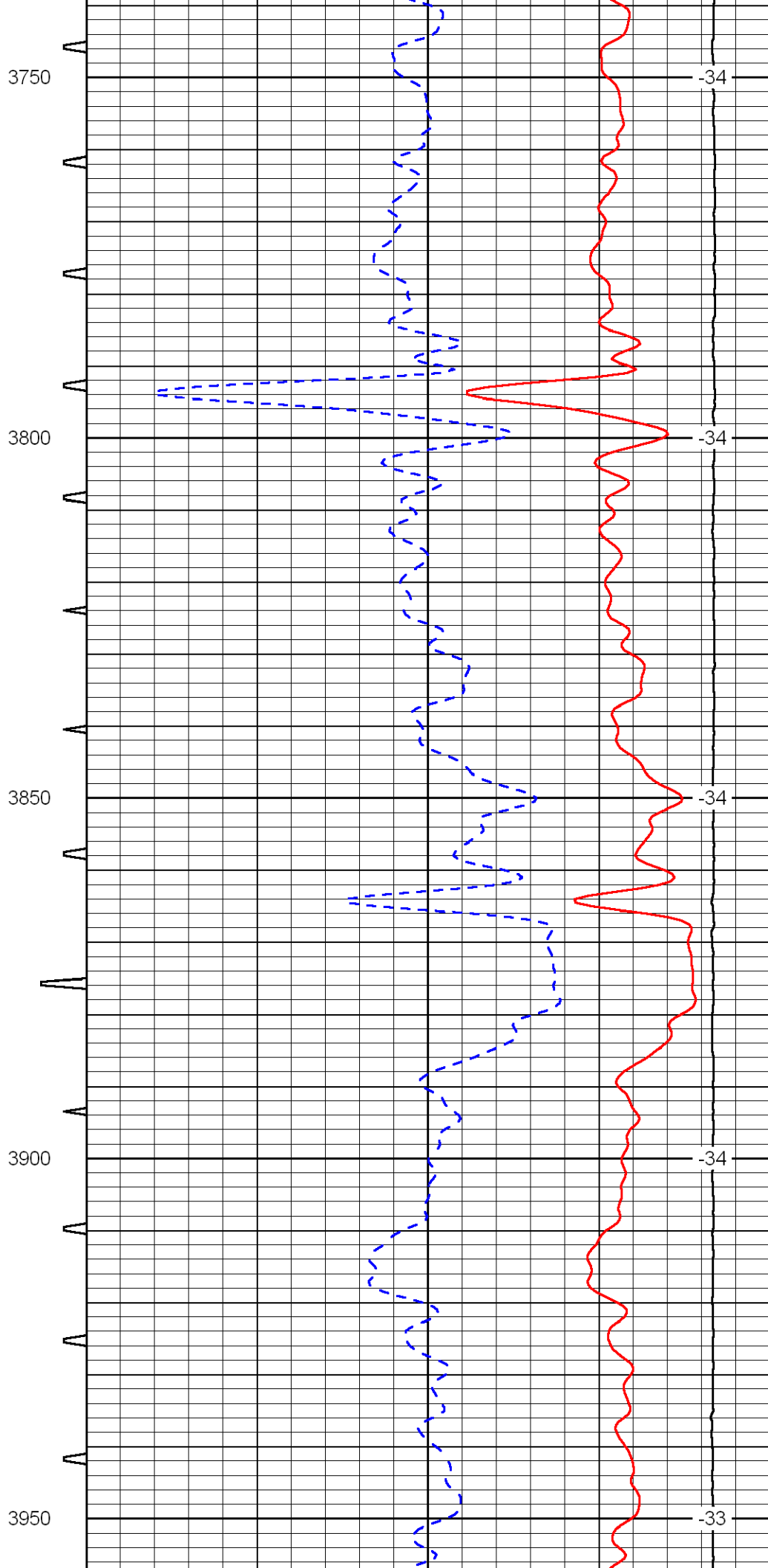
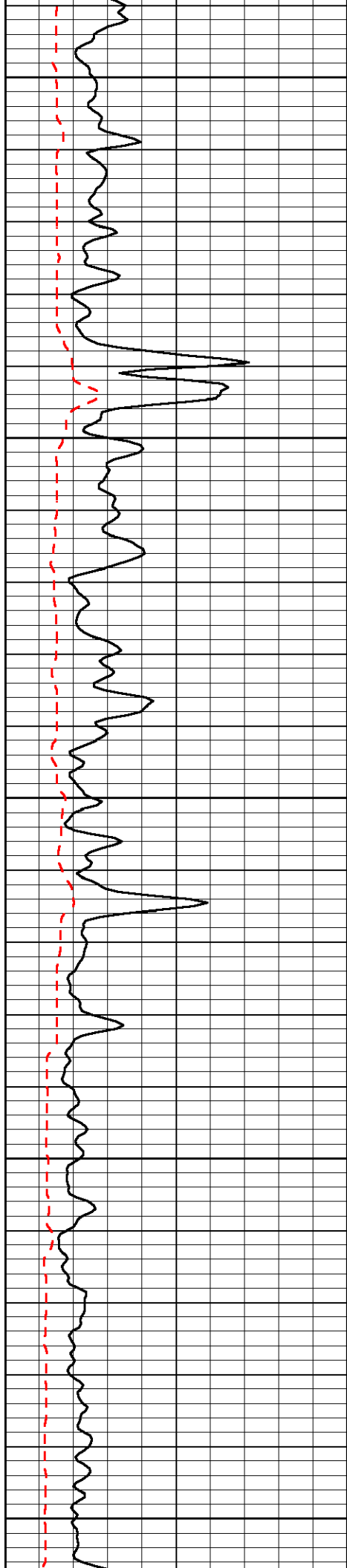


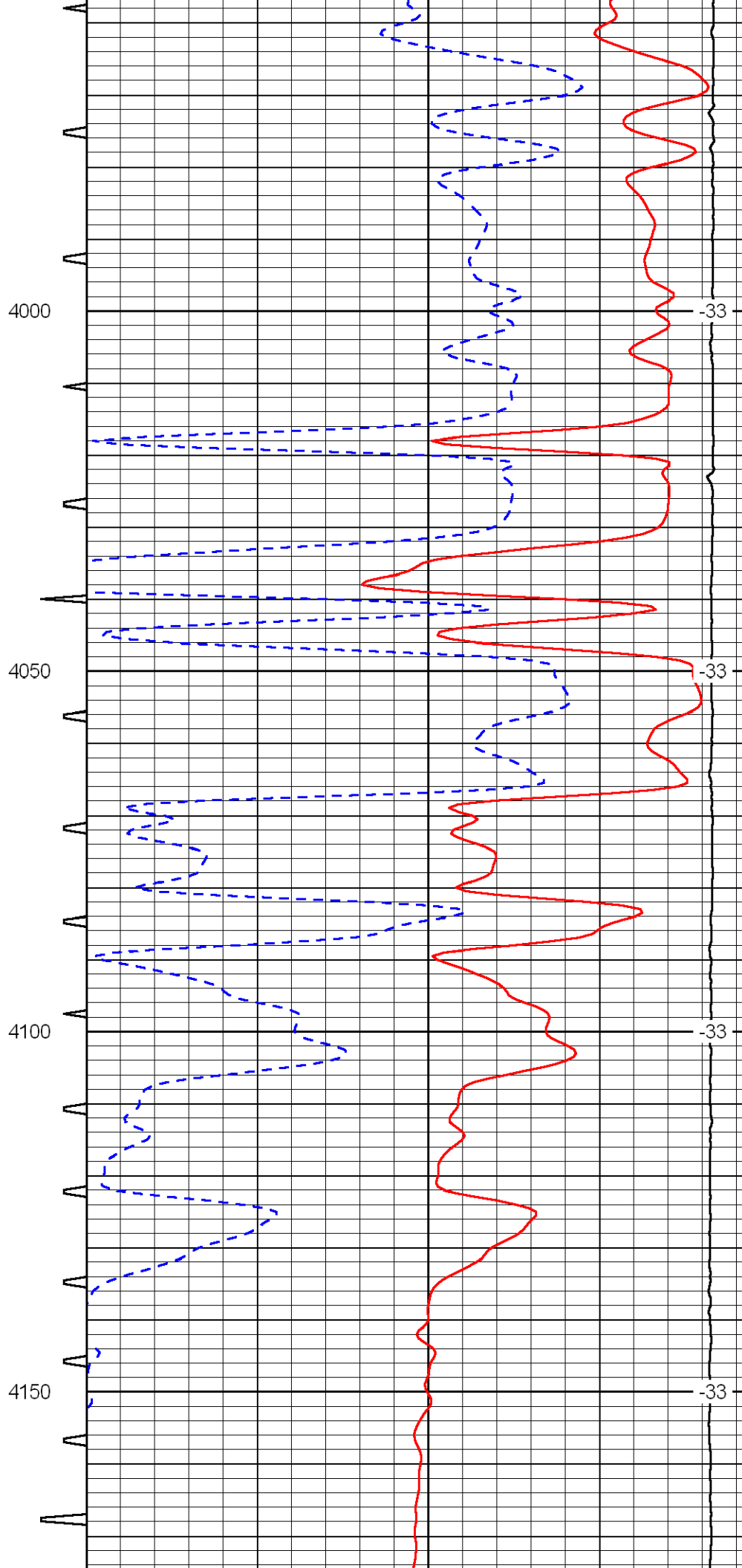
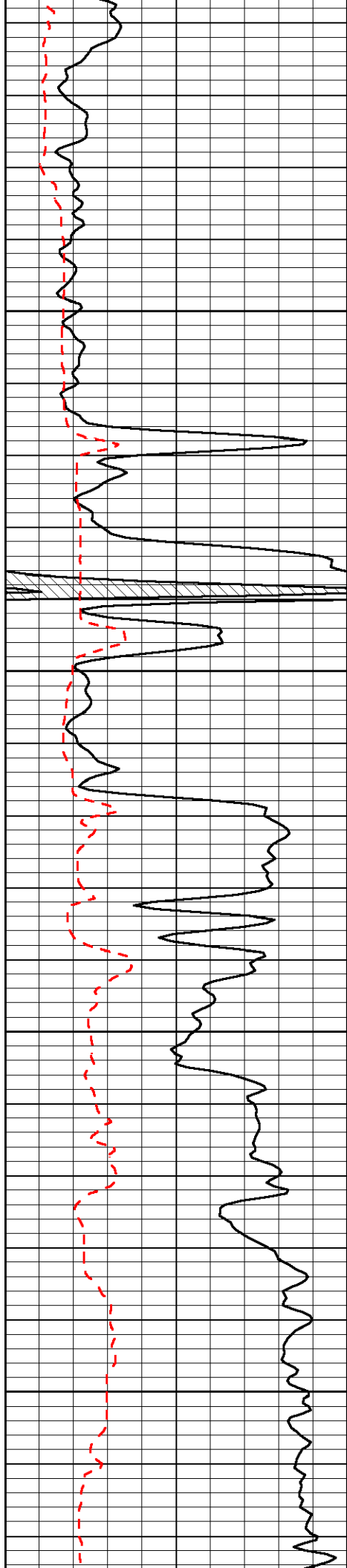


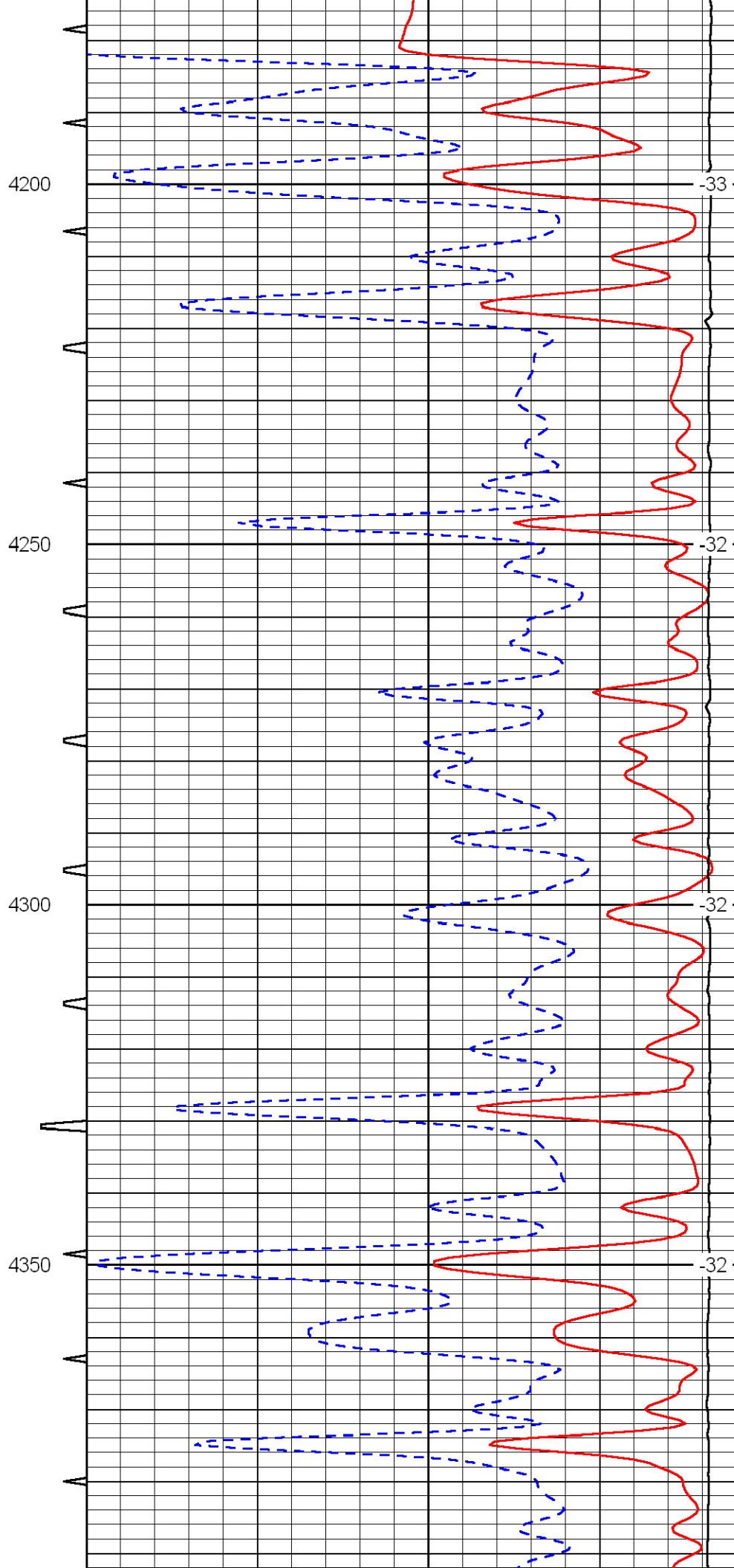
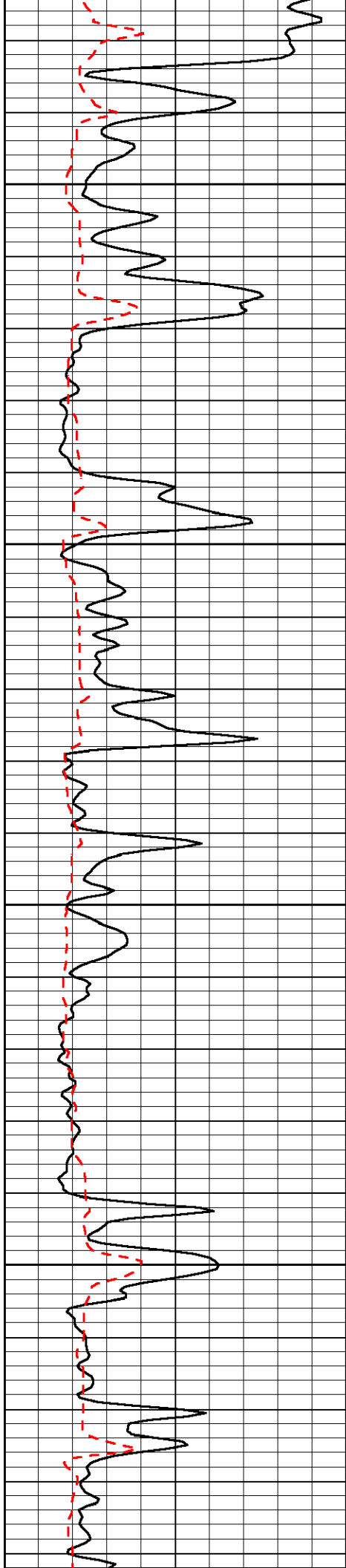


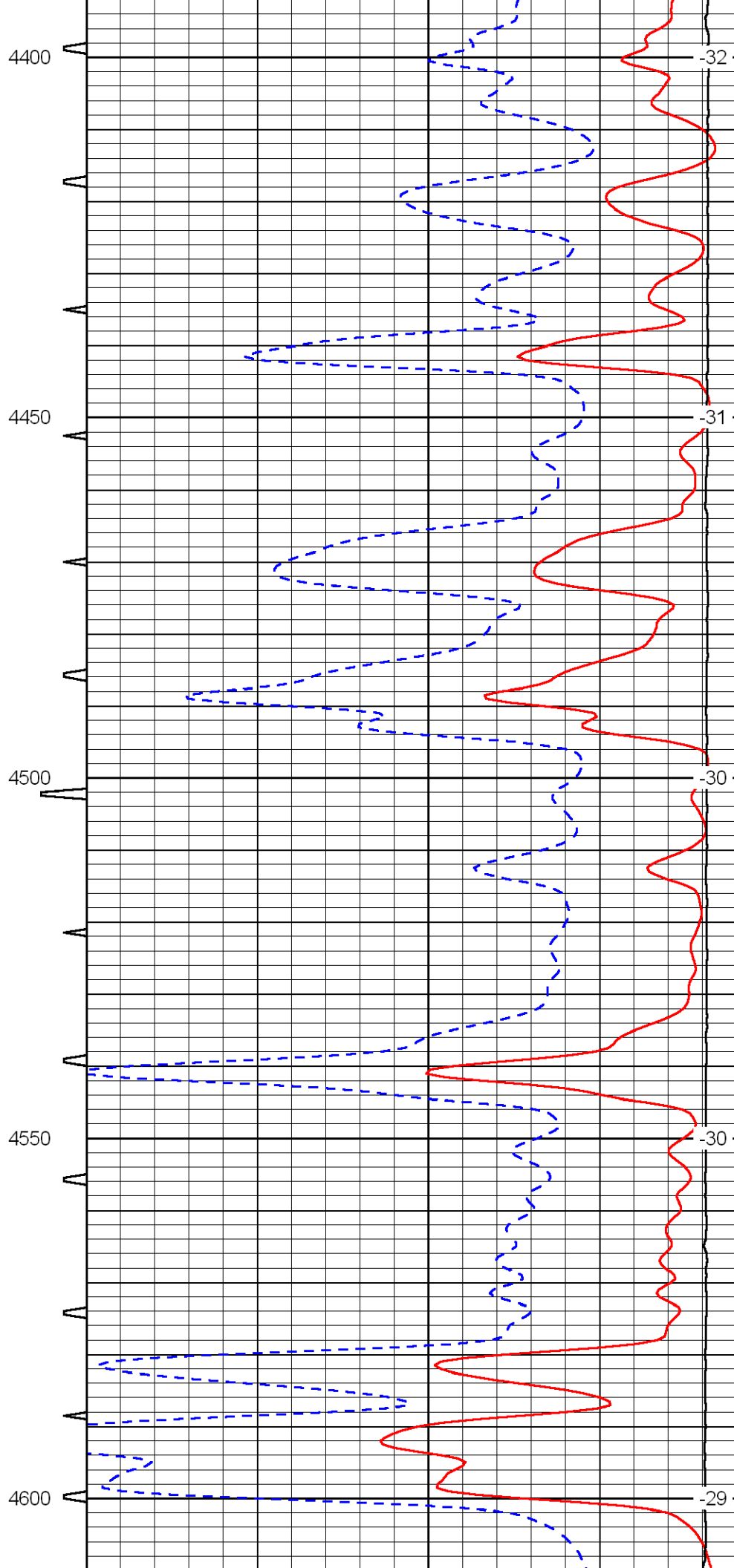
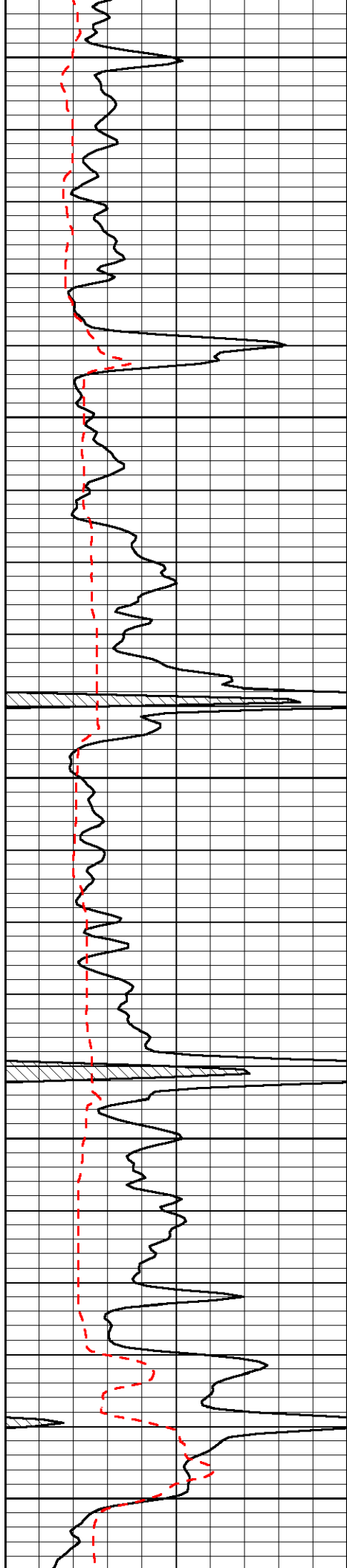


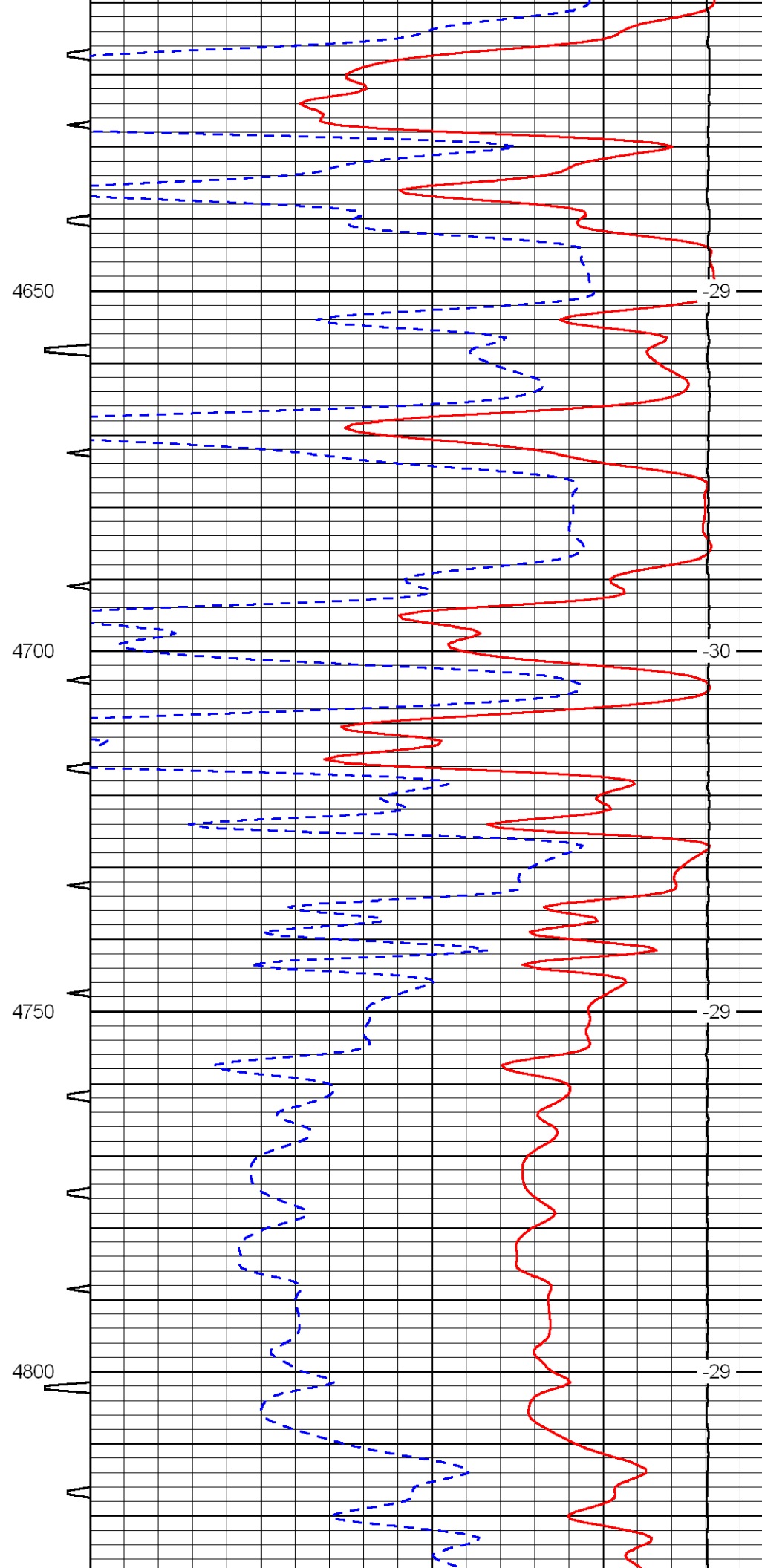
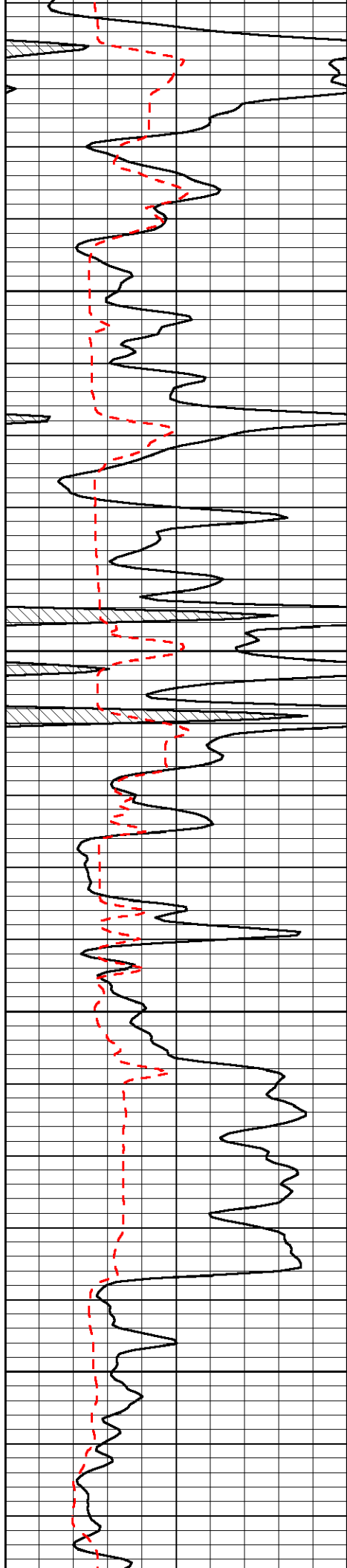


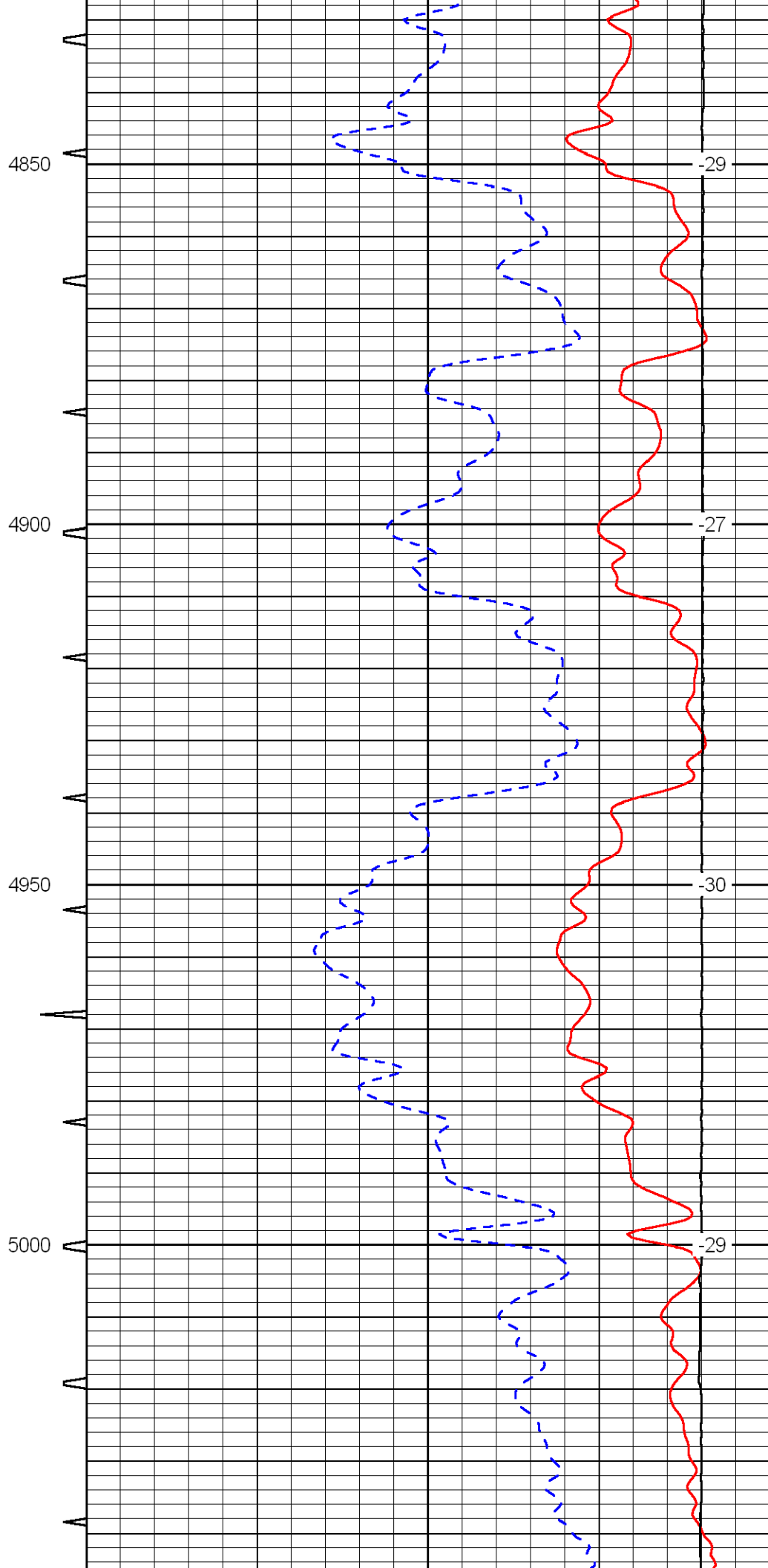
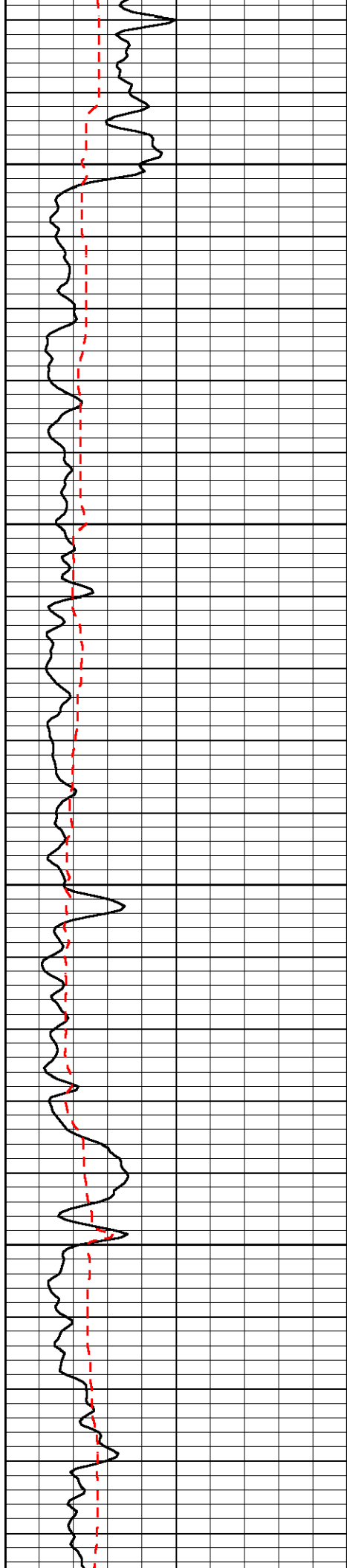


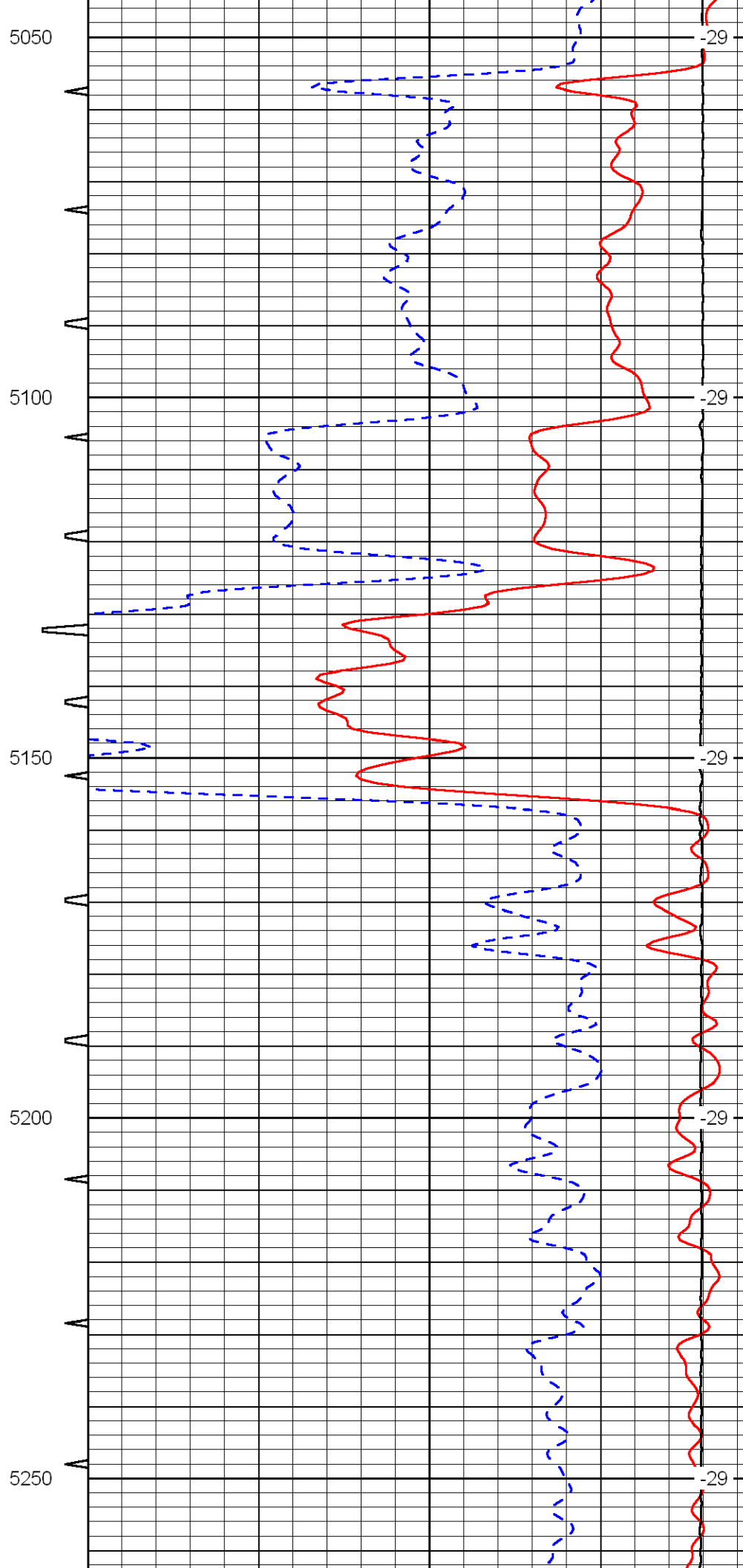
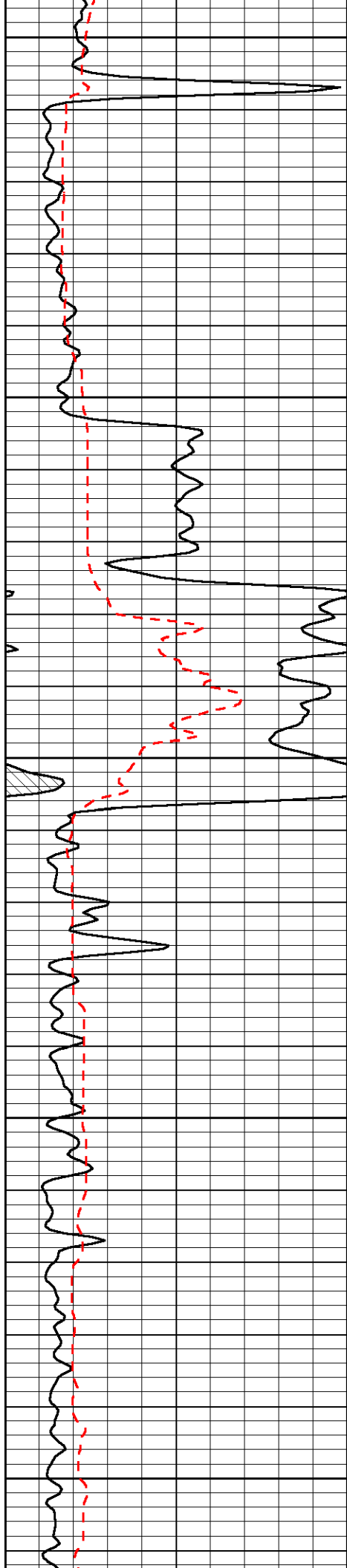


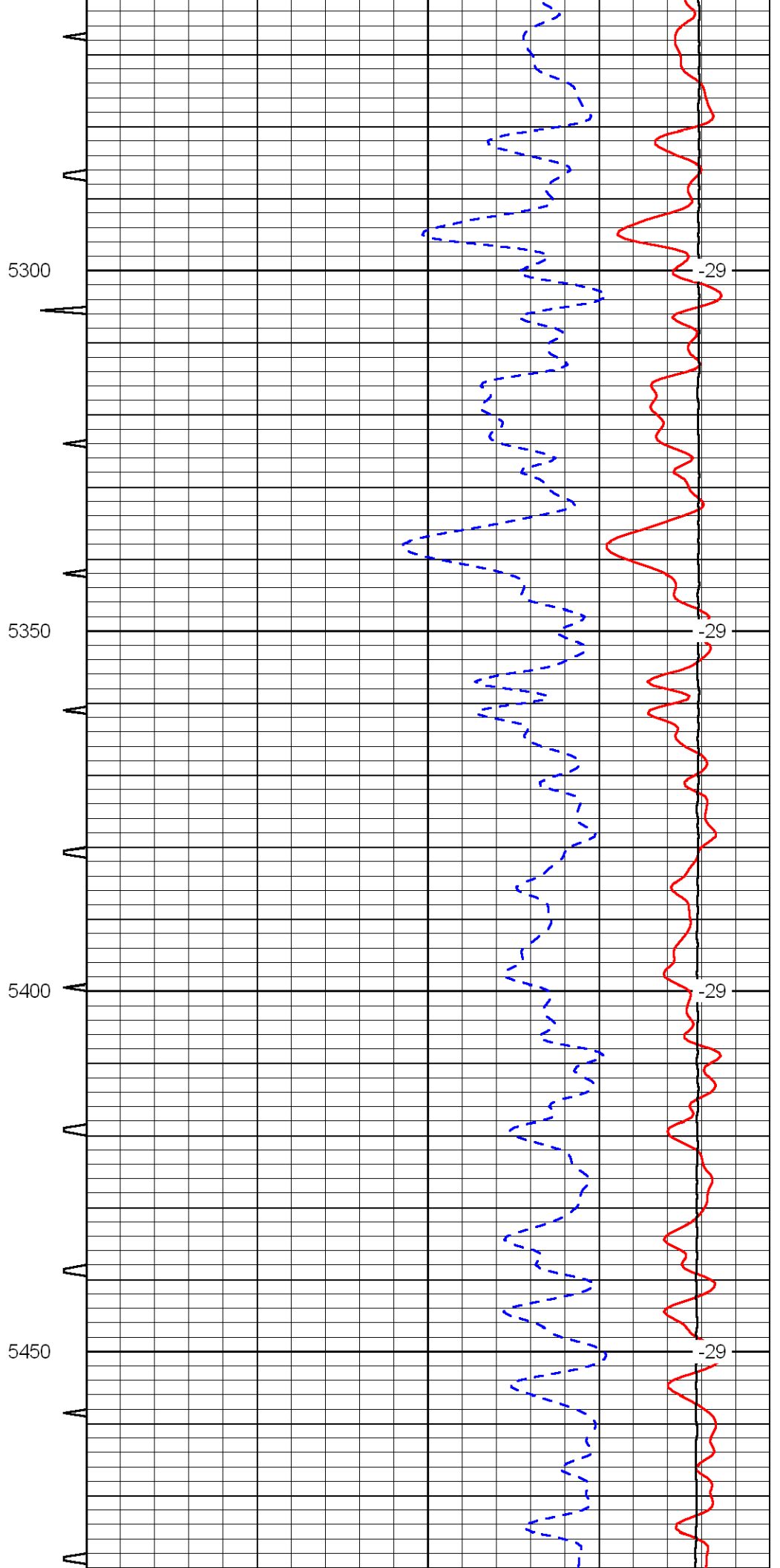
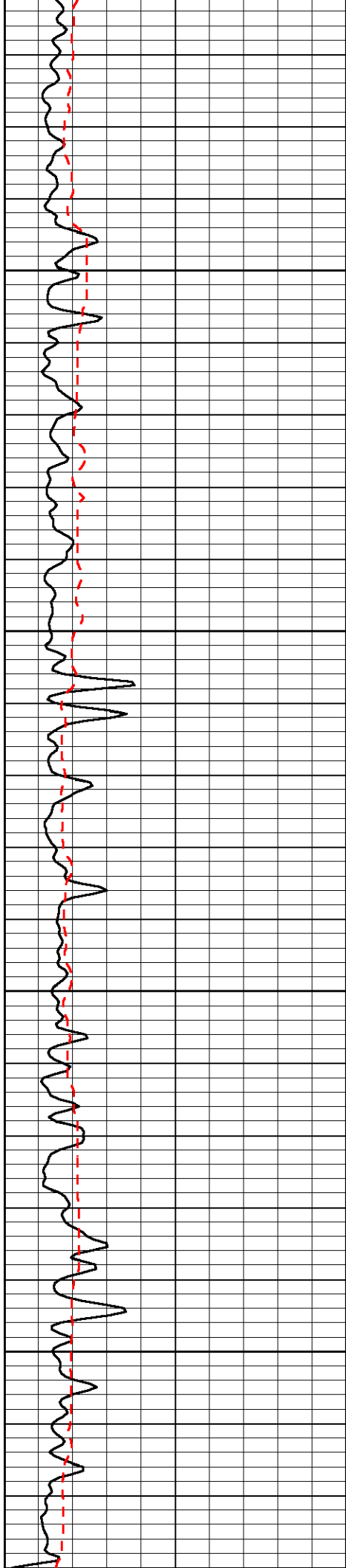


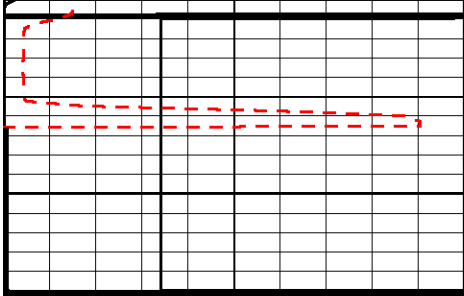




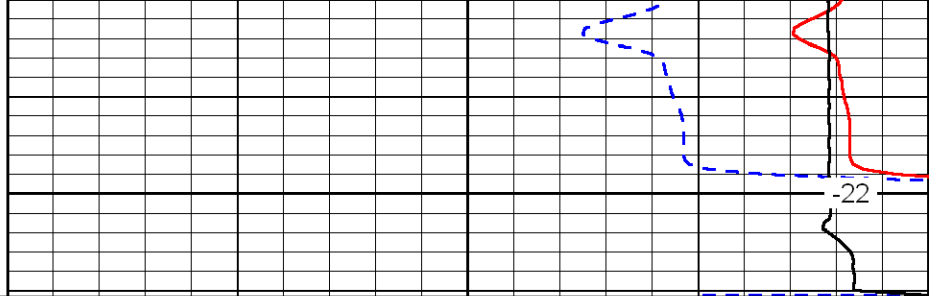








5500



0	Gamma Ray	150	Sonic Int	140	Delta Time (usec/ft)	40
150	Gamma Ray	300	5	0	Sonic Porosity	-10
6	dCAL (GAPI)	16		15000	LTEN (lb)	0
						LSPD