



Microresistivity Log

DIGITAL LOG (785) 625-3858

API No.	15-097-21,677-00-00		
Company	L.D. Drilling, Inc.		
Well	Anthony No. 1A-34		
Field			
County	Kiowa	State	Kansas
Location	NE NE NW 330' FNL & 2,310' FWL		
Sec: 34	Twp: 27S	Rge: 18W	
Other Services CNL/CDL DIL/BHCS			

Permanent Datum	Ground Level	Elevation 2199
Log Measured From	Kelly Bushing	10 Ft. Above Perm. Datum
Drilling Measured From	Kelly Bushing	

Date	10/23/2010	
Run Number	Two	
Depth Driller	5500	
Depth Logger	5504	
Bottom Logged Interval	5503	
Top Log Interval	2300	
Casing Driller	8.625 @ 505	
Casing Logger	500	
Bit Size	7.875	
Type Fluid in Hole	Chemical	
Salinity, ppm CL	5000	
Density / Viscosity	9.4	53
pH / Fluid Loss	8.0	9.6
Source of Sample	Flowline	
Rm @ Meas. Temp	.65 @	73
Rmf @ Meas. Temp	.49 @	73
Rmc @ Meas. Temp	.88 @	73
Source of Rmf / Rmc	Charts	
Rm @ BHT	.36 @	131
Operating Rig Time	5 Hours	
Max Rec. Temp. F	131	
Equipment Number	10	
Location	Hays	
Recorded By	J. Long	
Witnessed By	Derek Patterson	

<<< Fold Here >>>

All interpretations are opinions based on inferences from electrical or other measurements and we cannot and do not guarantee the accuracy or correctness of any interpretation, and we shall not, except in the case of gross or willful negligence on our part, be liable or responsible for any loss, costs, damages, or expenses incurred or sustained by anyone resulting from any interpretation made by any of our officers, agents or employees. These interpretations are also subject to our general terms and conditions set out in our current Price Schedule.

Comments

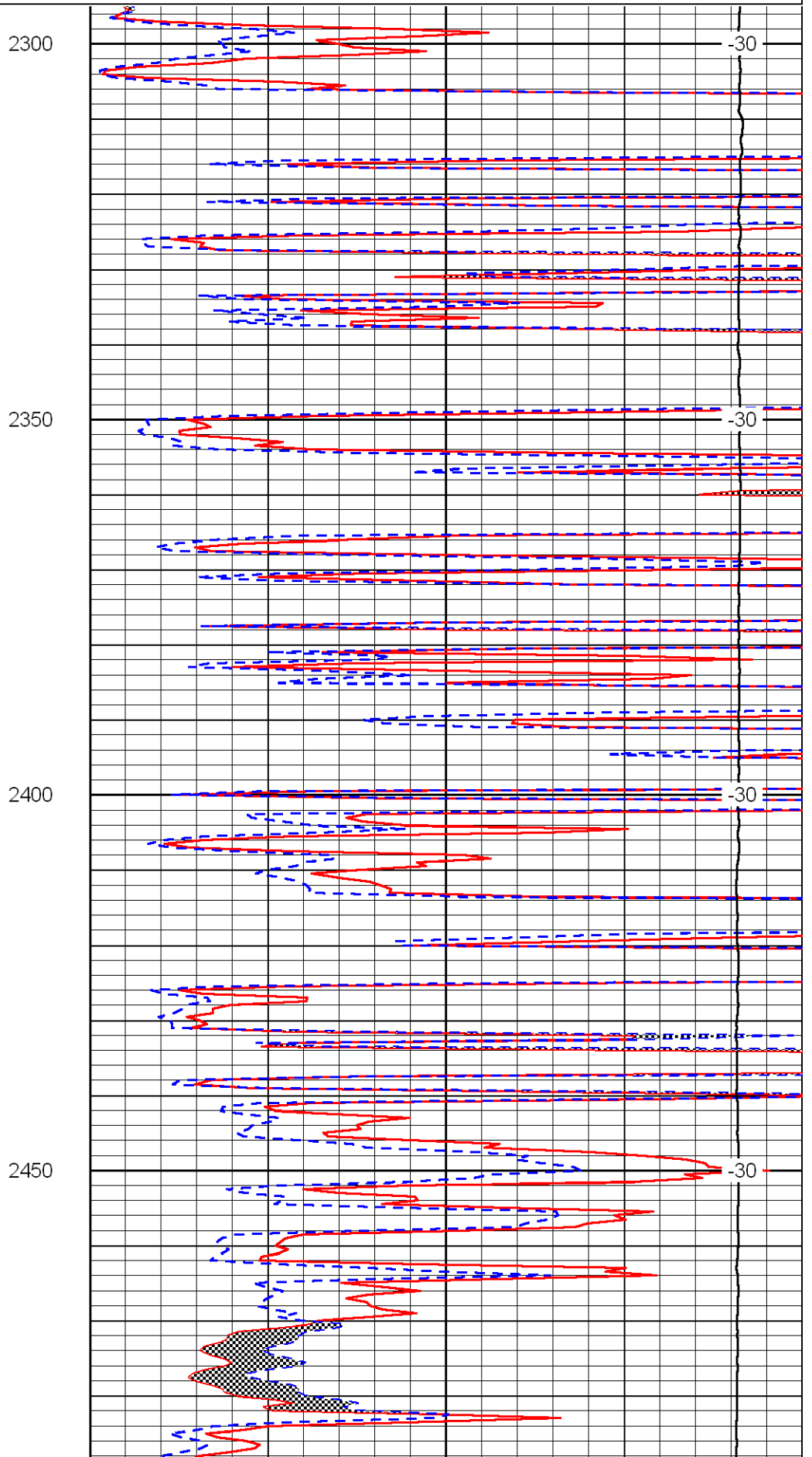
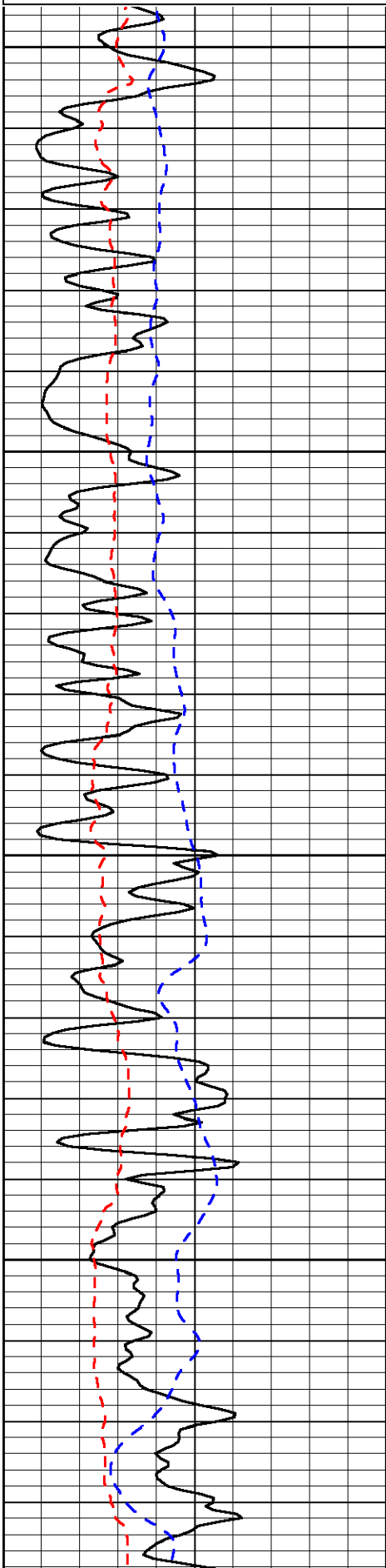
Thank you for using Log-Tech, Inc.
(785) 625-3858

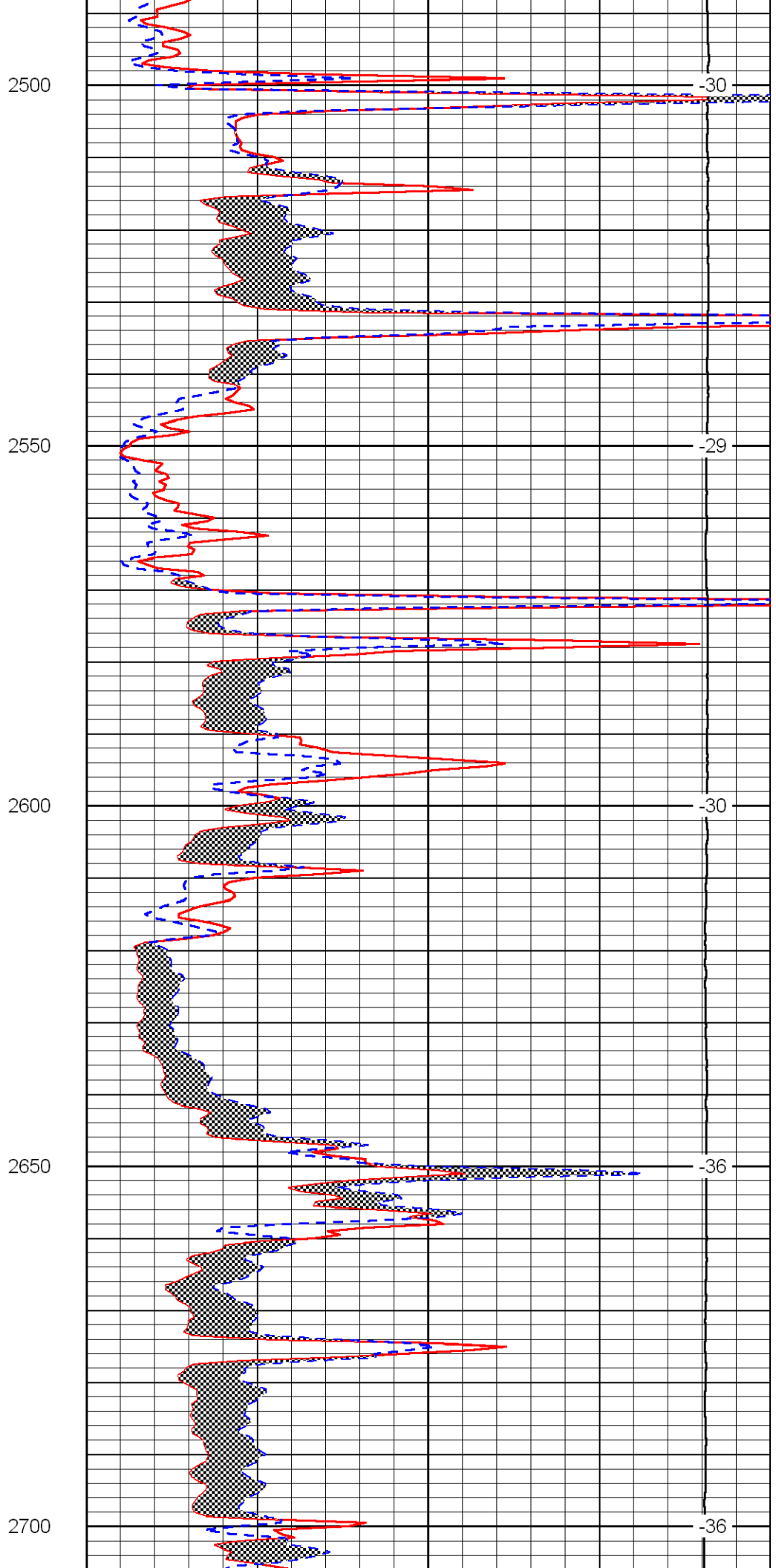
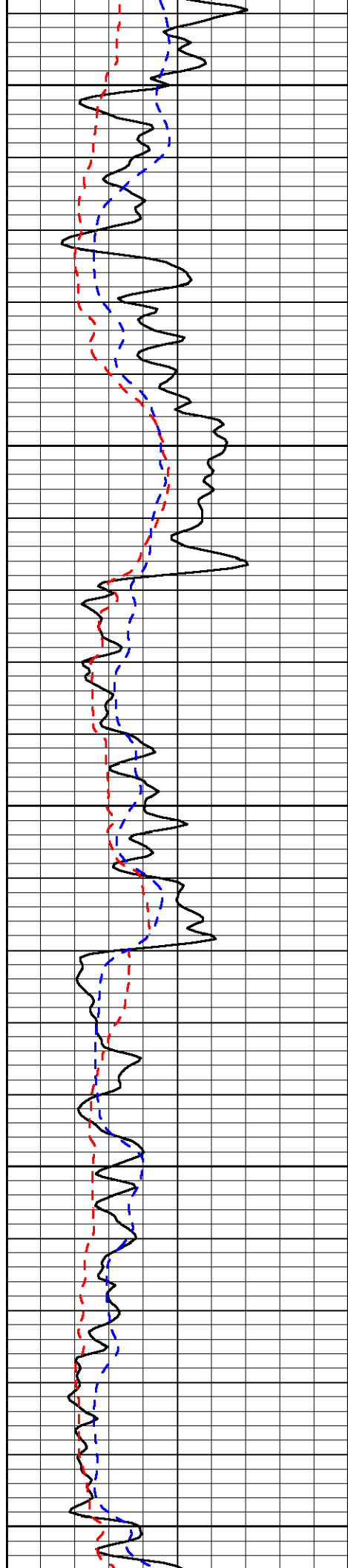
Greensburg, 1 East to Avenue 33, 2 1/2 North to Road G, 1 1/2 West, 1 North, East Into by Mailbox

Database File:	ld_anthony_1a-34hd.db
Dataset Pathname:	dil/ldstck
Presentation Format:	micro
Dataset Creation:	Sun Oct 24 03:23:53 2010
Charted by:	Depth in Feet scaled 1:240

0	Gamma Ray	150
6	MCAL (GAPI)	16
2.875	Mud Cake (GAPI)	7.875
-200	SP	0

0	Micro Inverse 1 X 1	40
0	Micro Normal 2"	40
10000	Line Weight	0
		LSPD





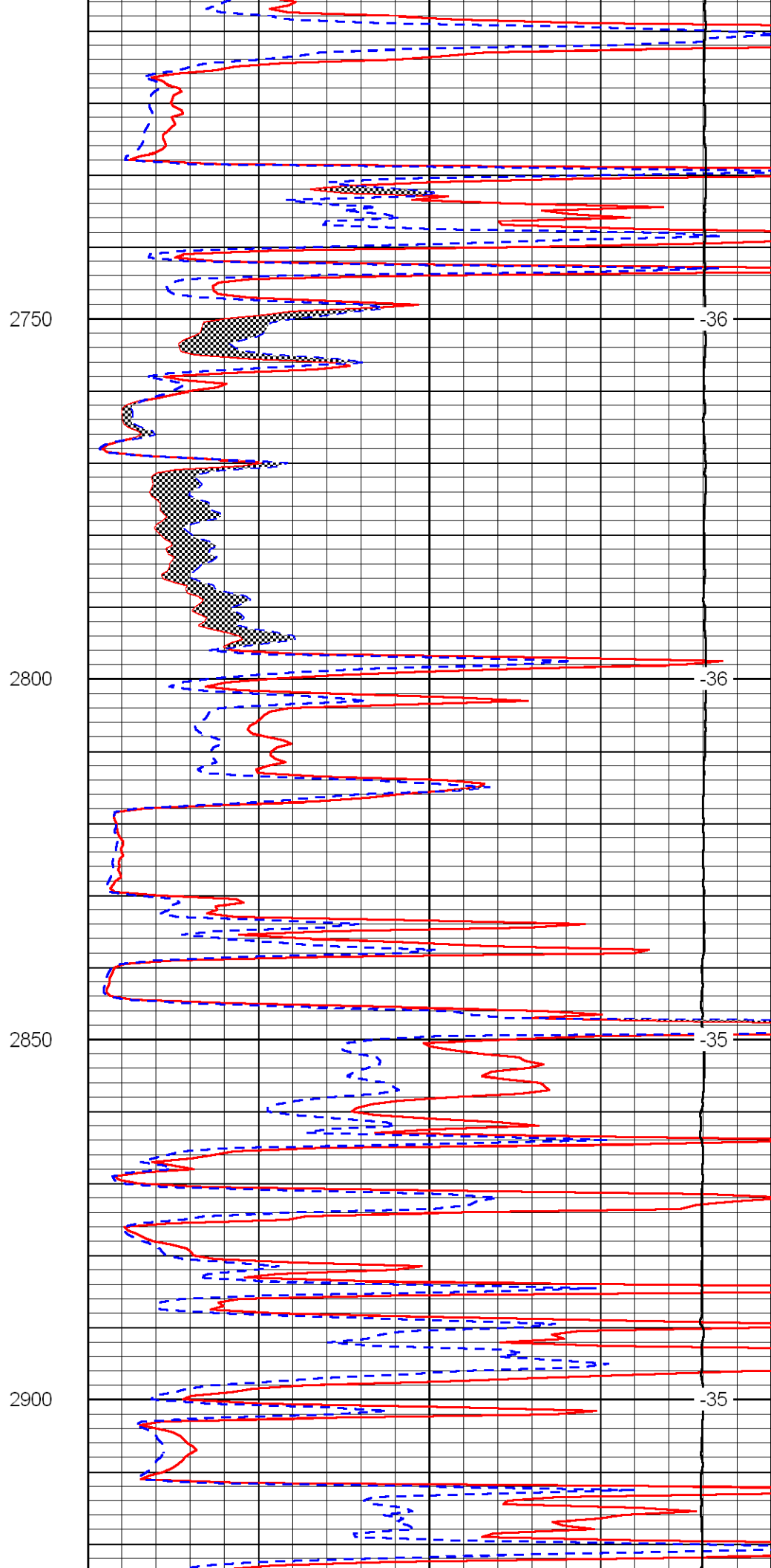
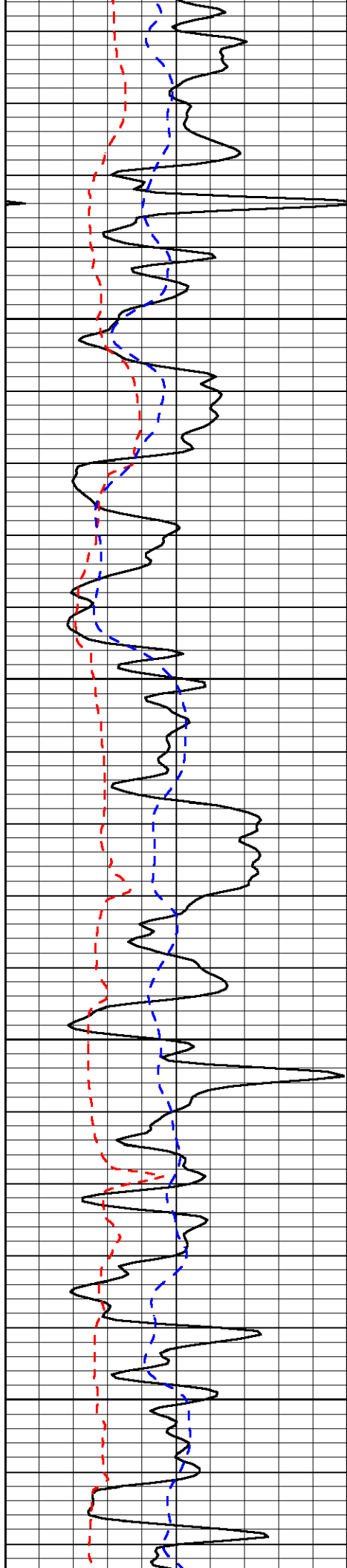
30

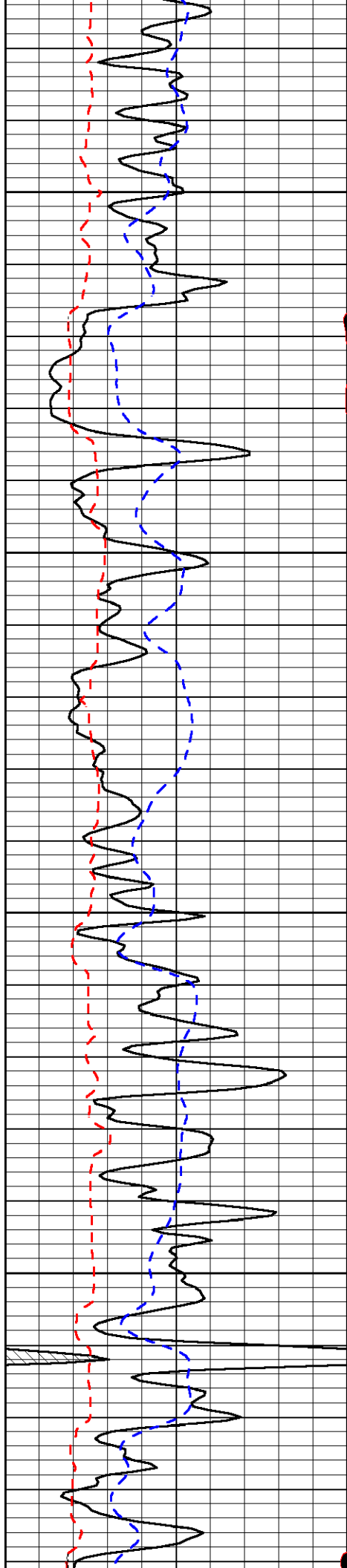
29

30

36

36



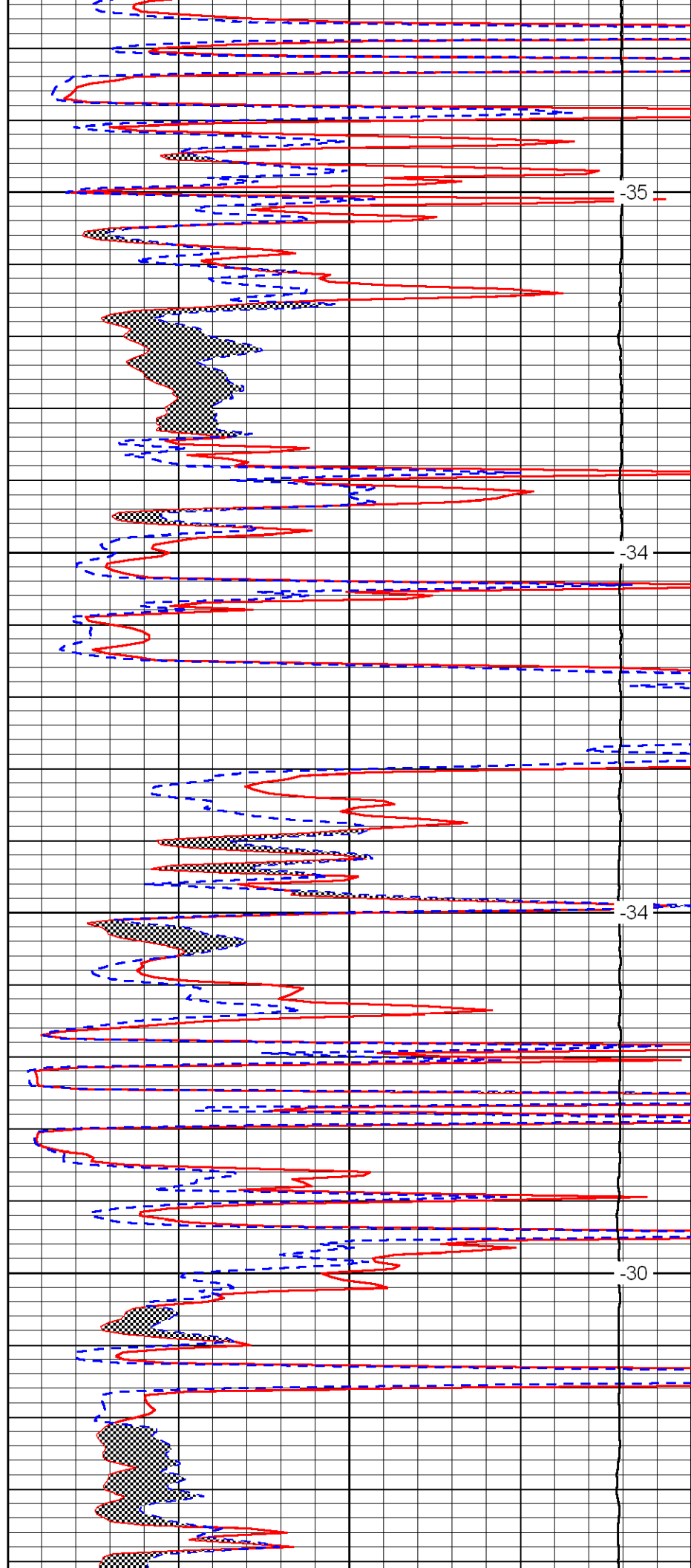


2950

3000

3050

3100

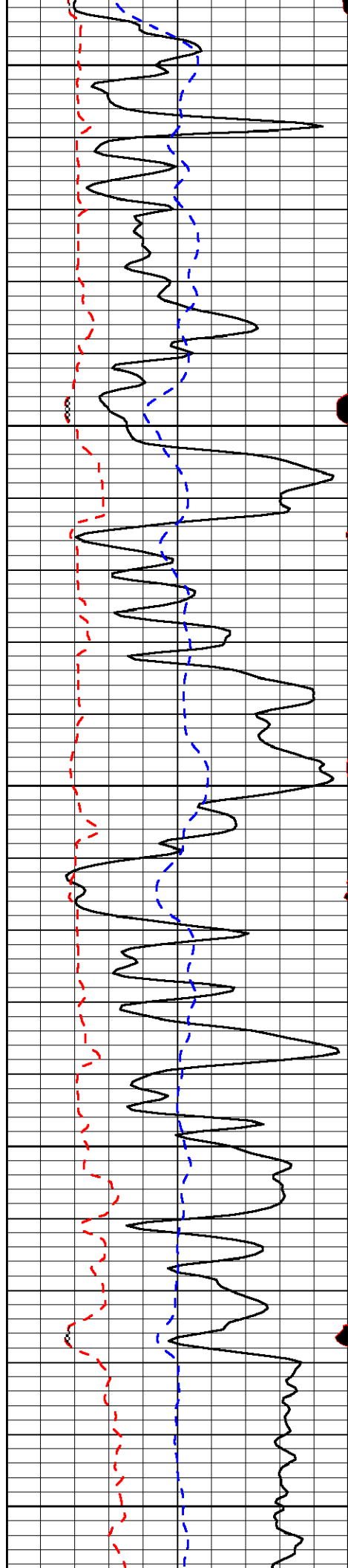


35

34

34

30



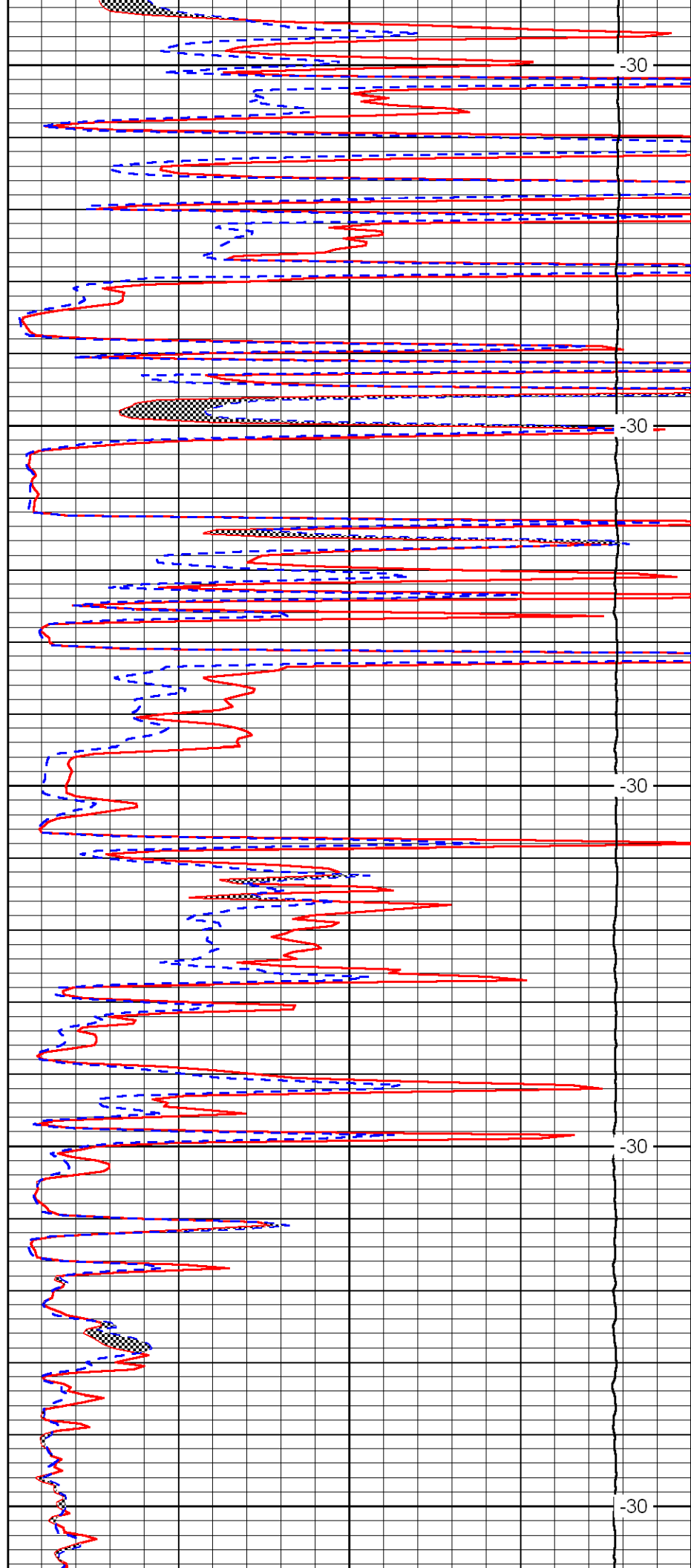
3150

3200

3250

3300

3350



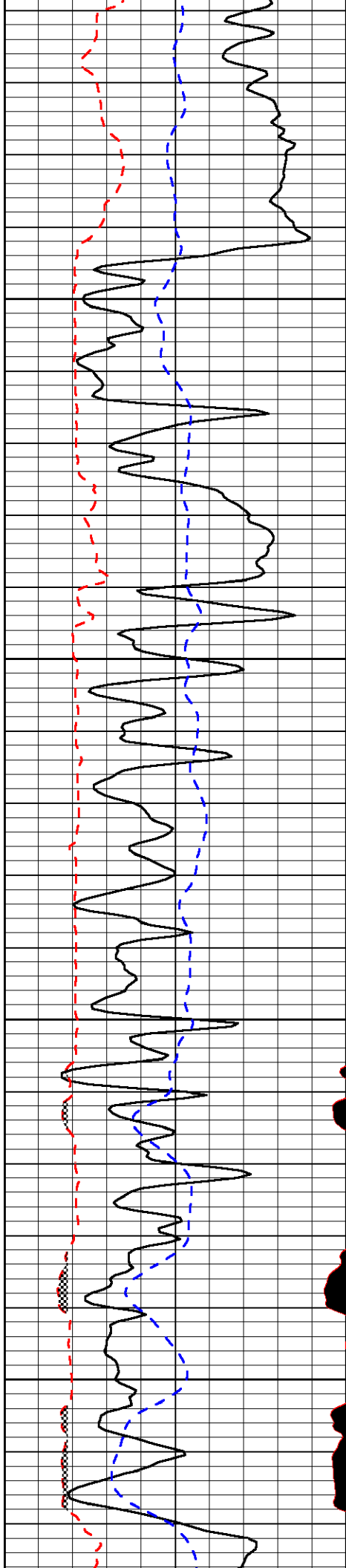
-30

-30

-30

-30

-30

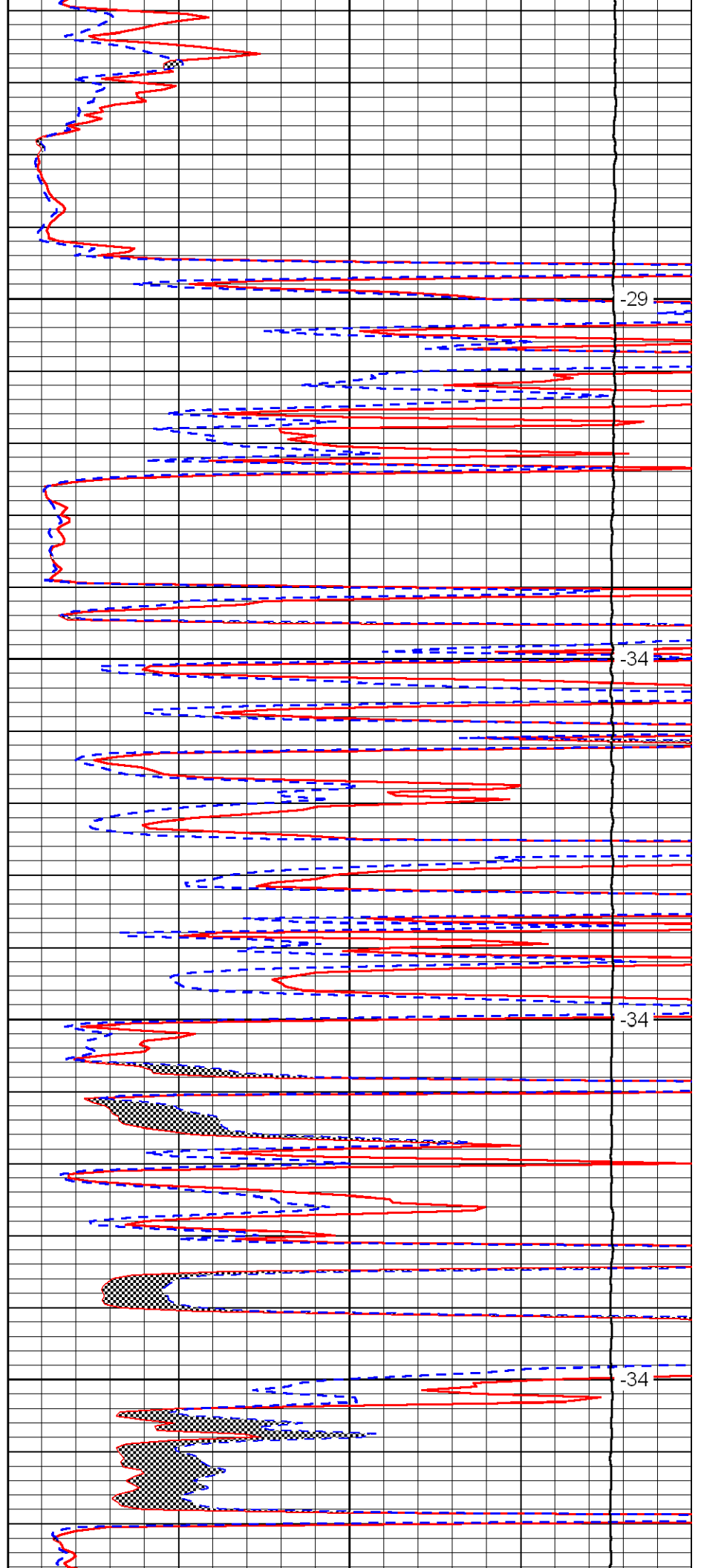


3400

3450

3500

3550

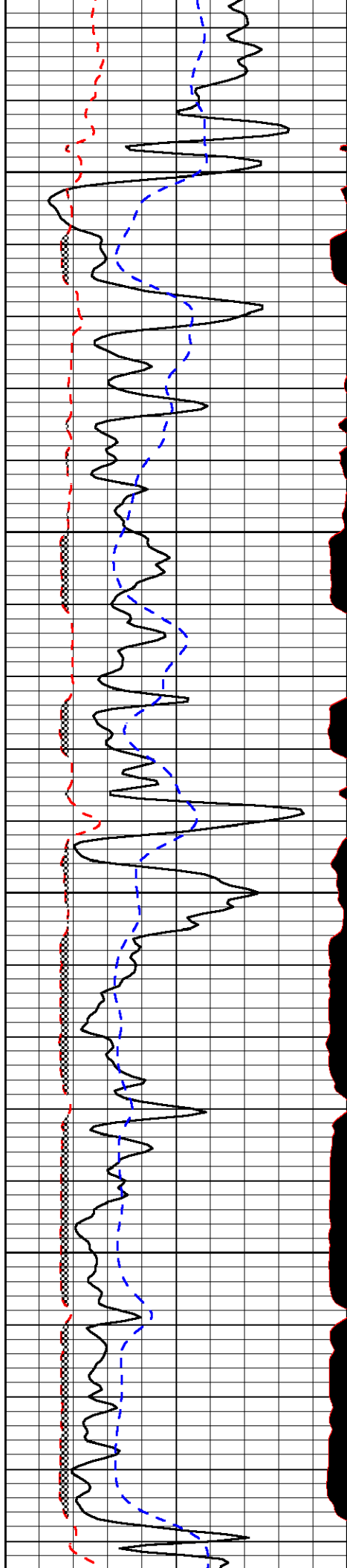


29

34

34

34

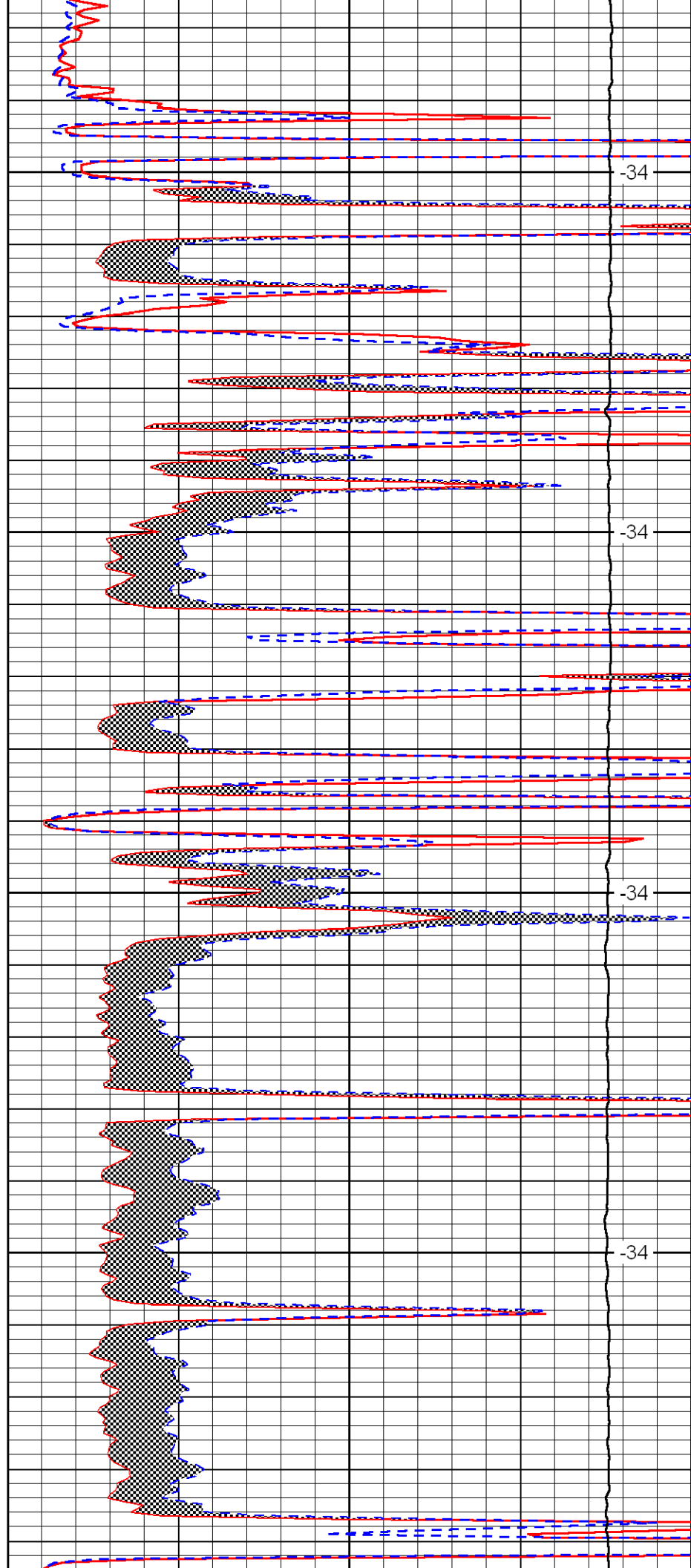


3600

3650

3700

3750

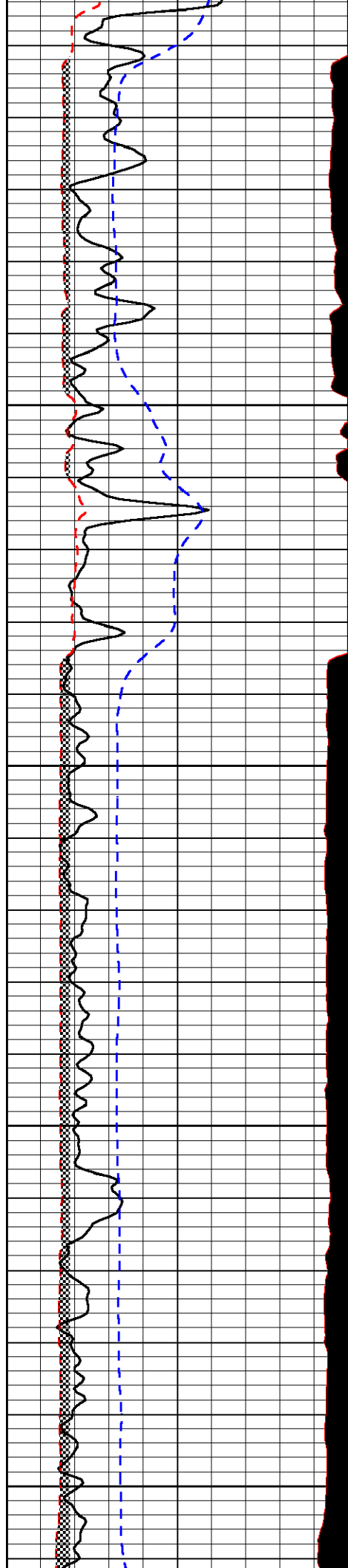


-34

-34

-34

-34



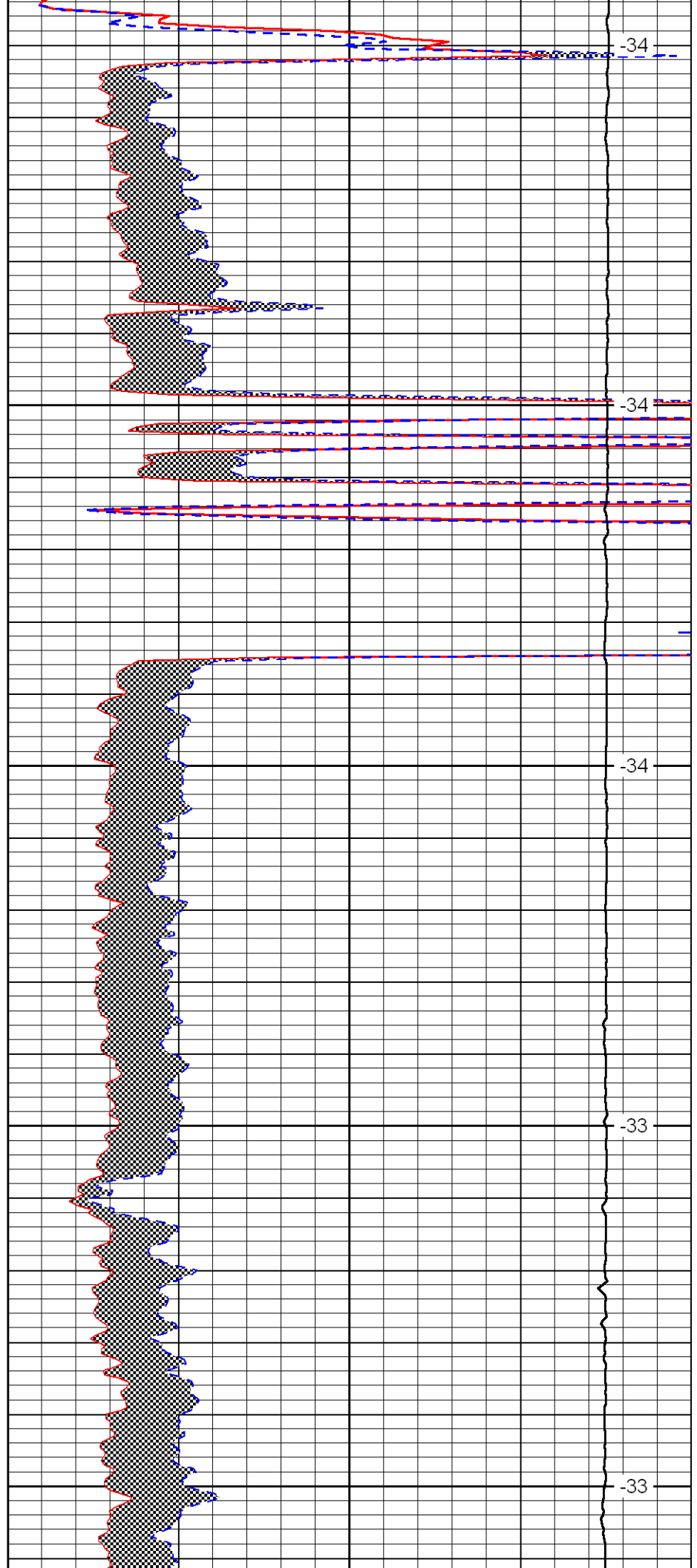
3800

3850

3900

3950

4000



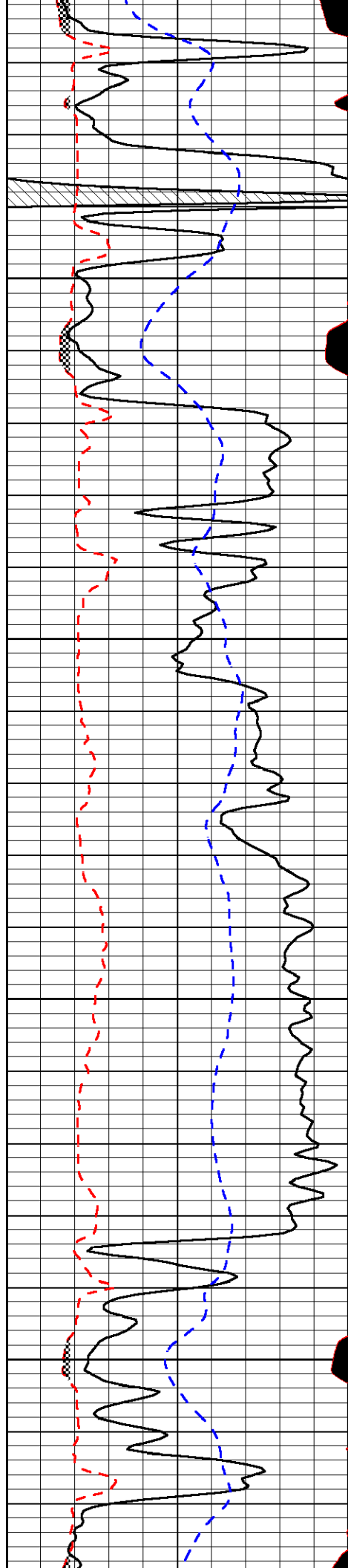
-34

-34

-34

-33

-33

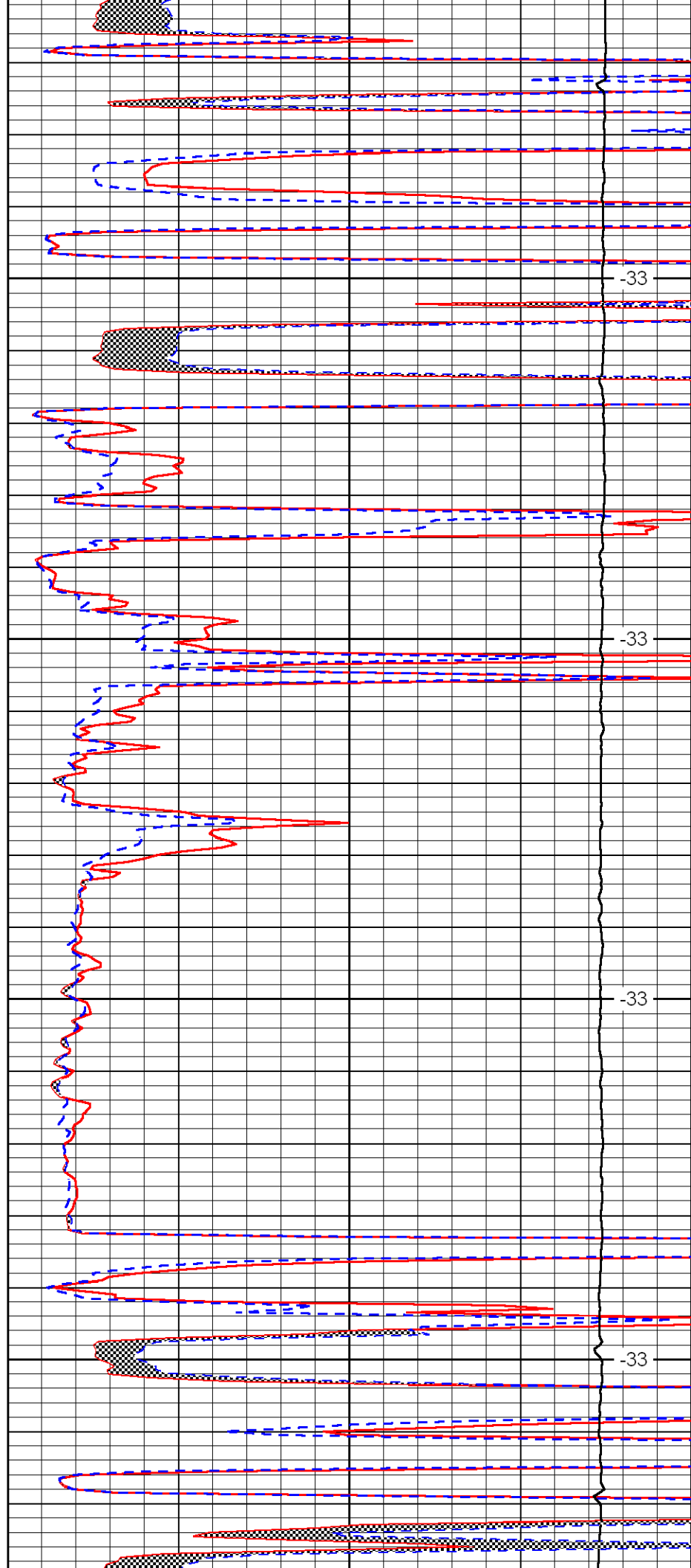


4050

4100

4150

4200

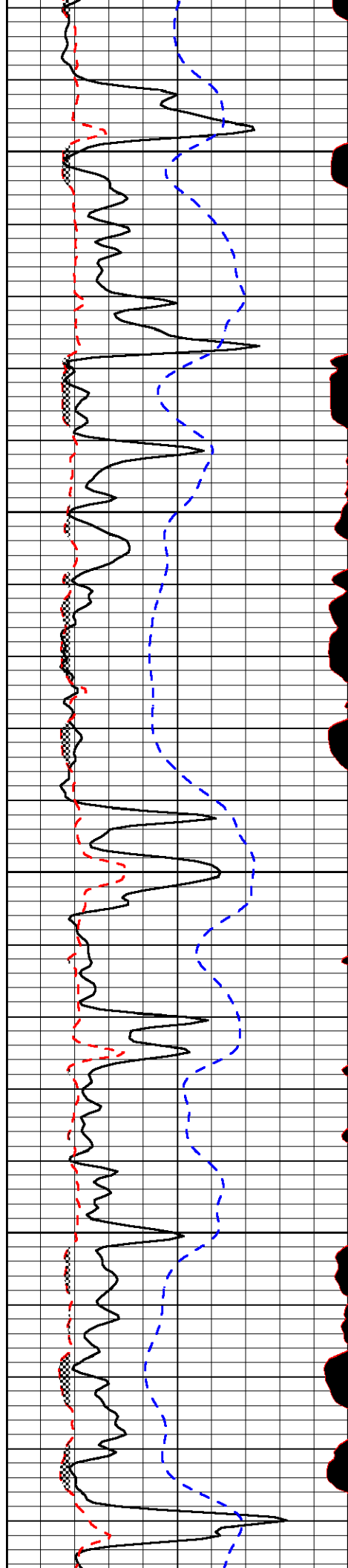


-33

-33

-33

-33

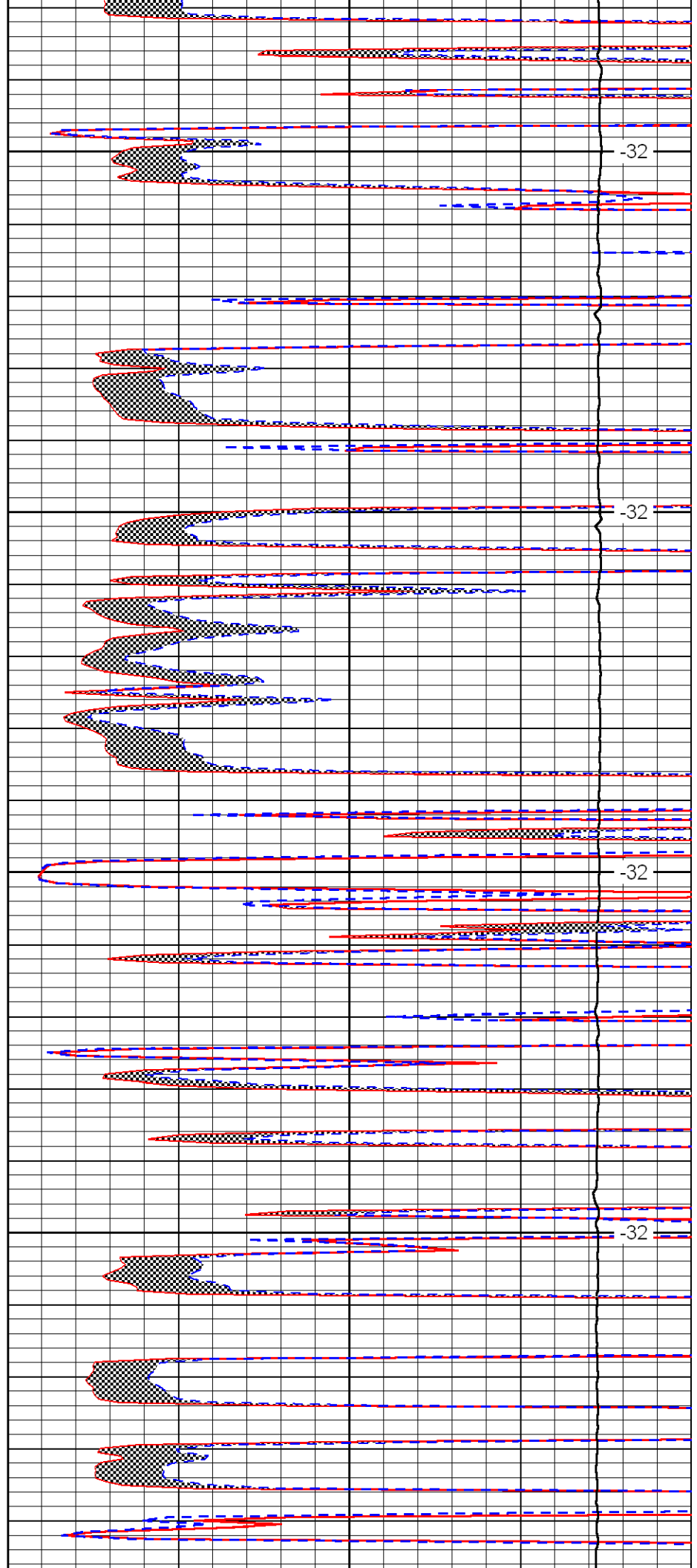


4250

4300

4350

4400

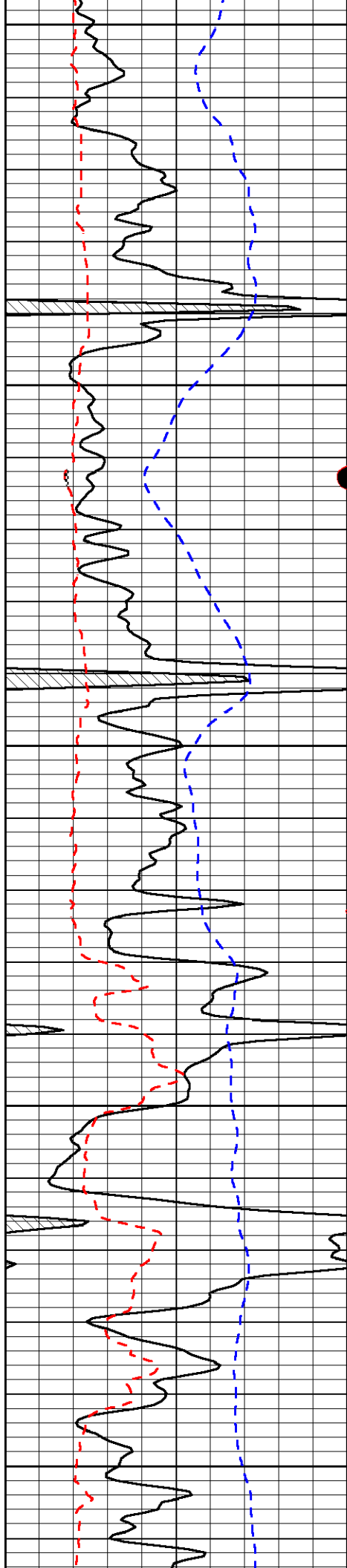


-32

-32

-32

-32



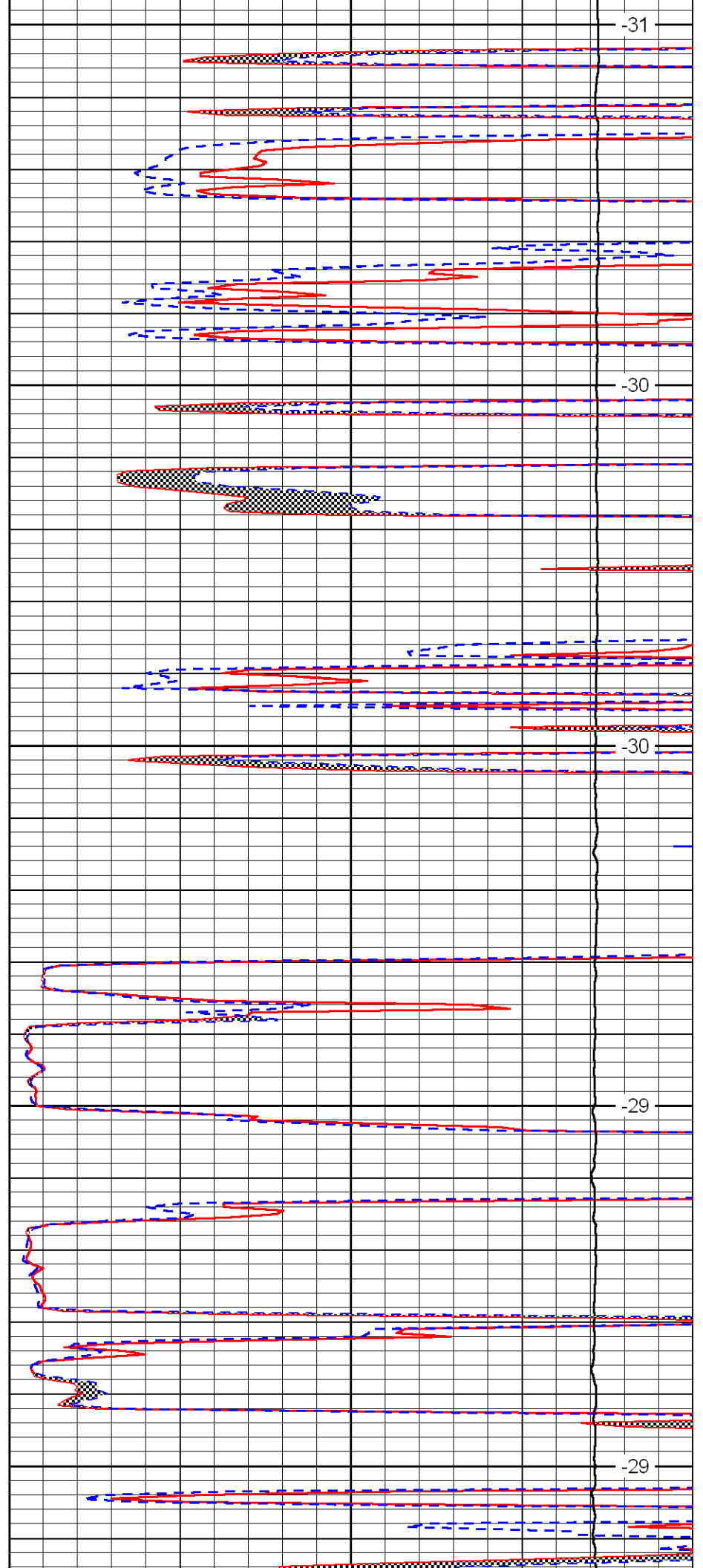
4450

4500

4550

4600

4650



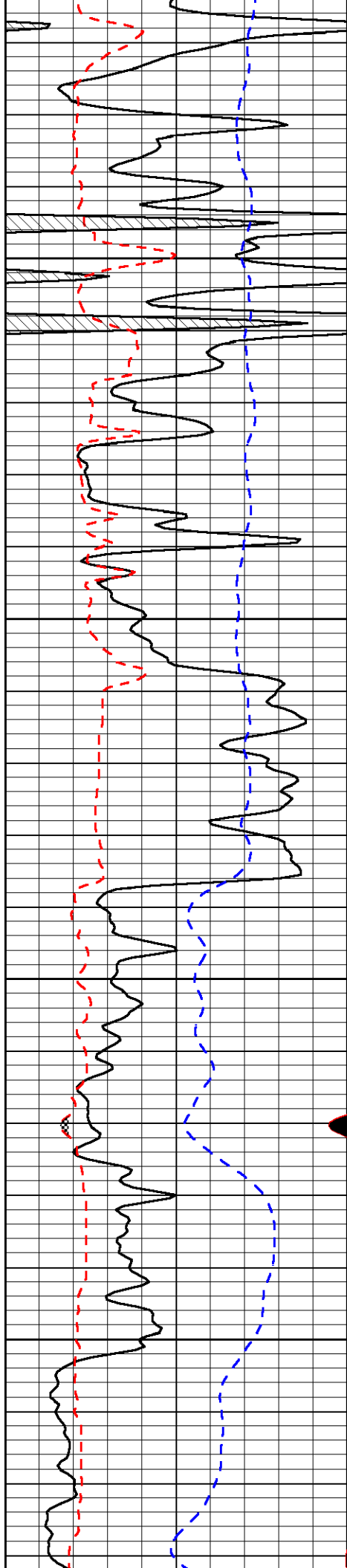
-31

-30

-30

-29

-29

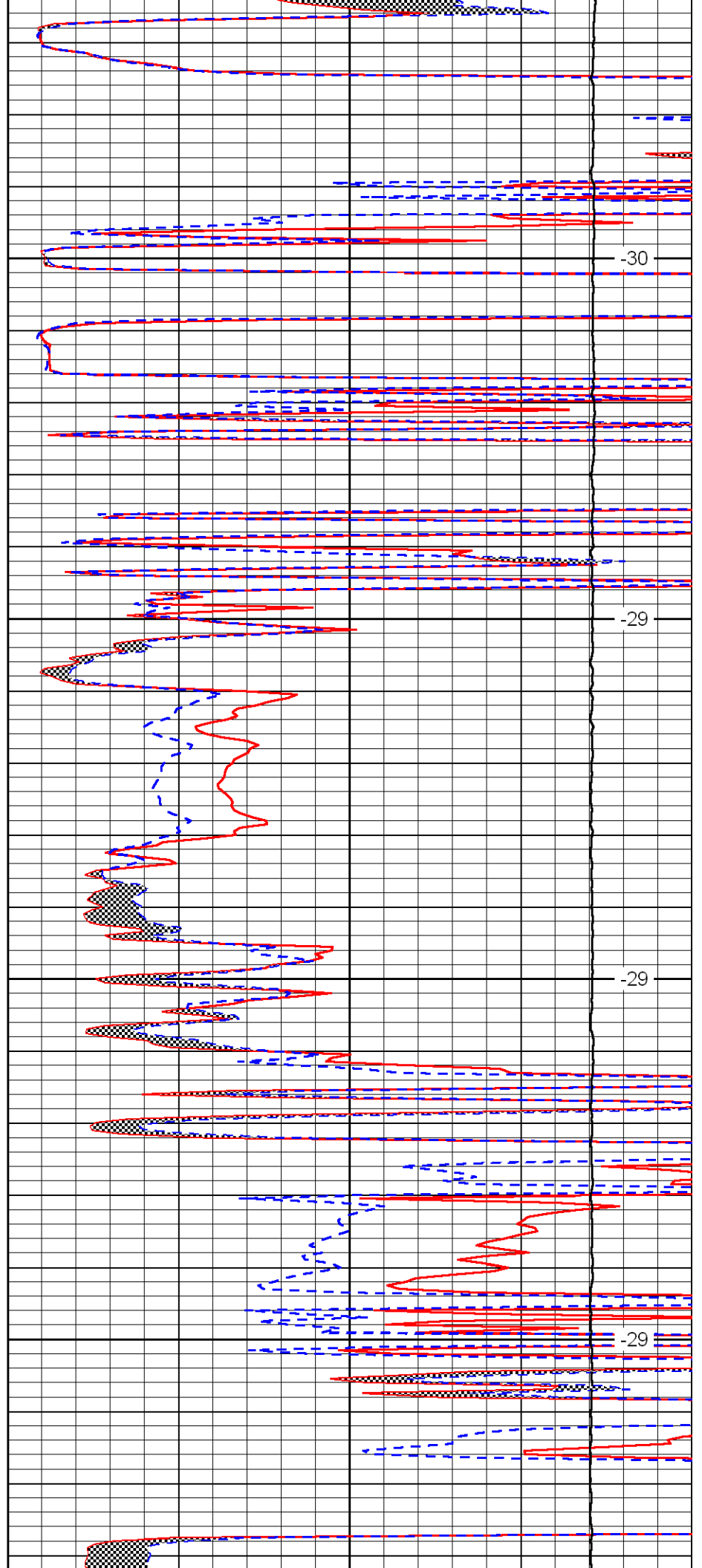


4700

4750

4800

4850

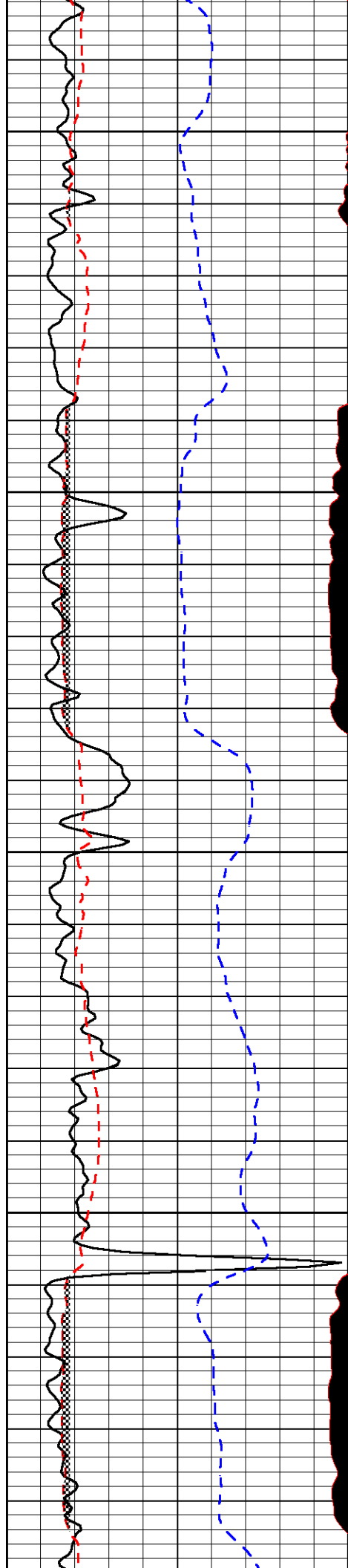


-30

-29

-29

-29



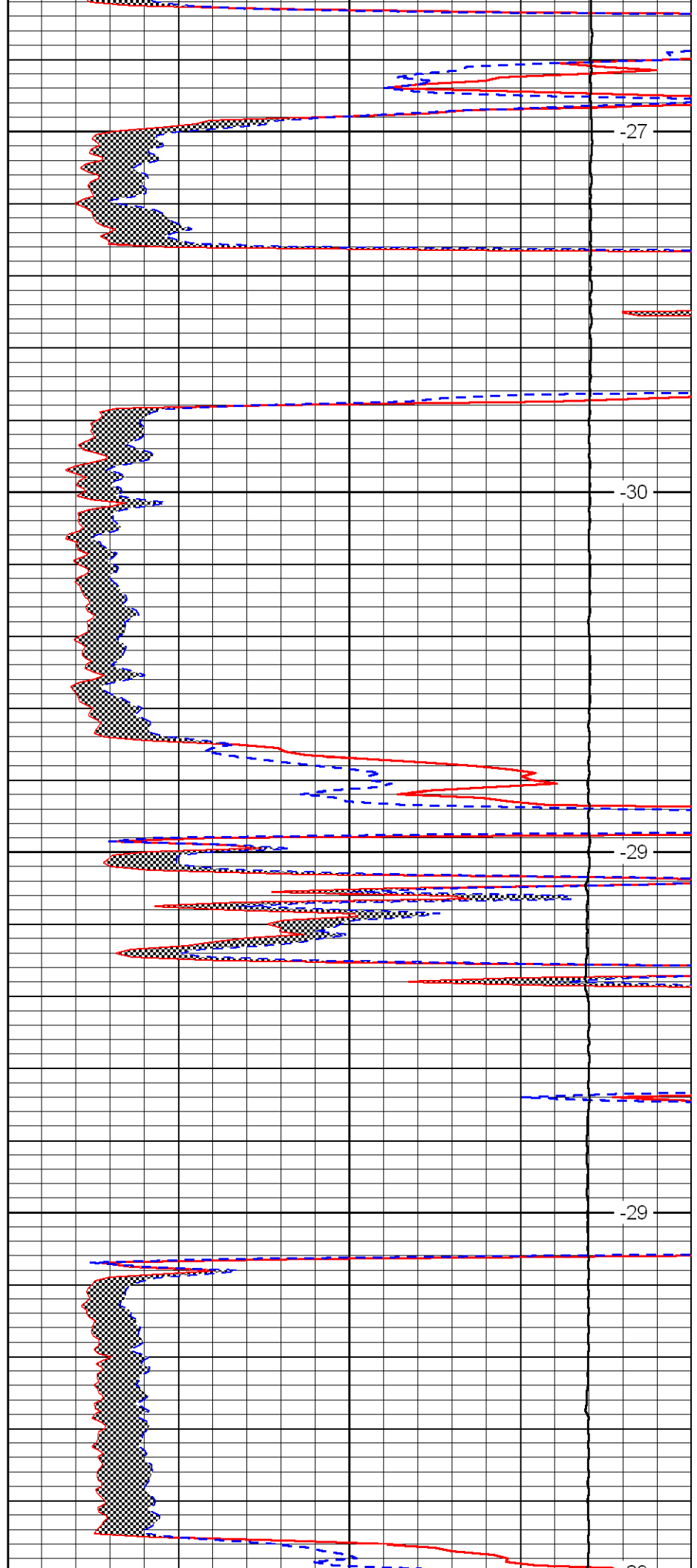
4900

4950

5000

5050

5100



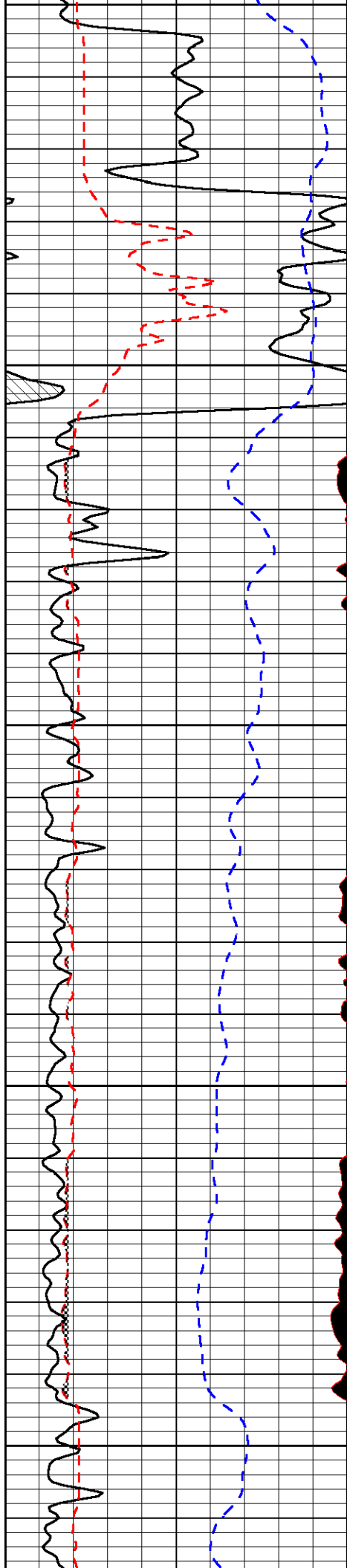
-27

-30

-29

-29

-26



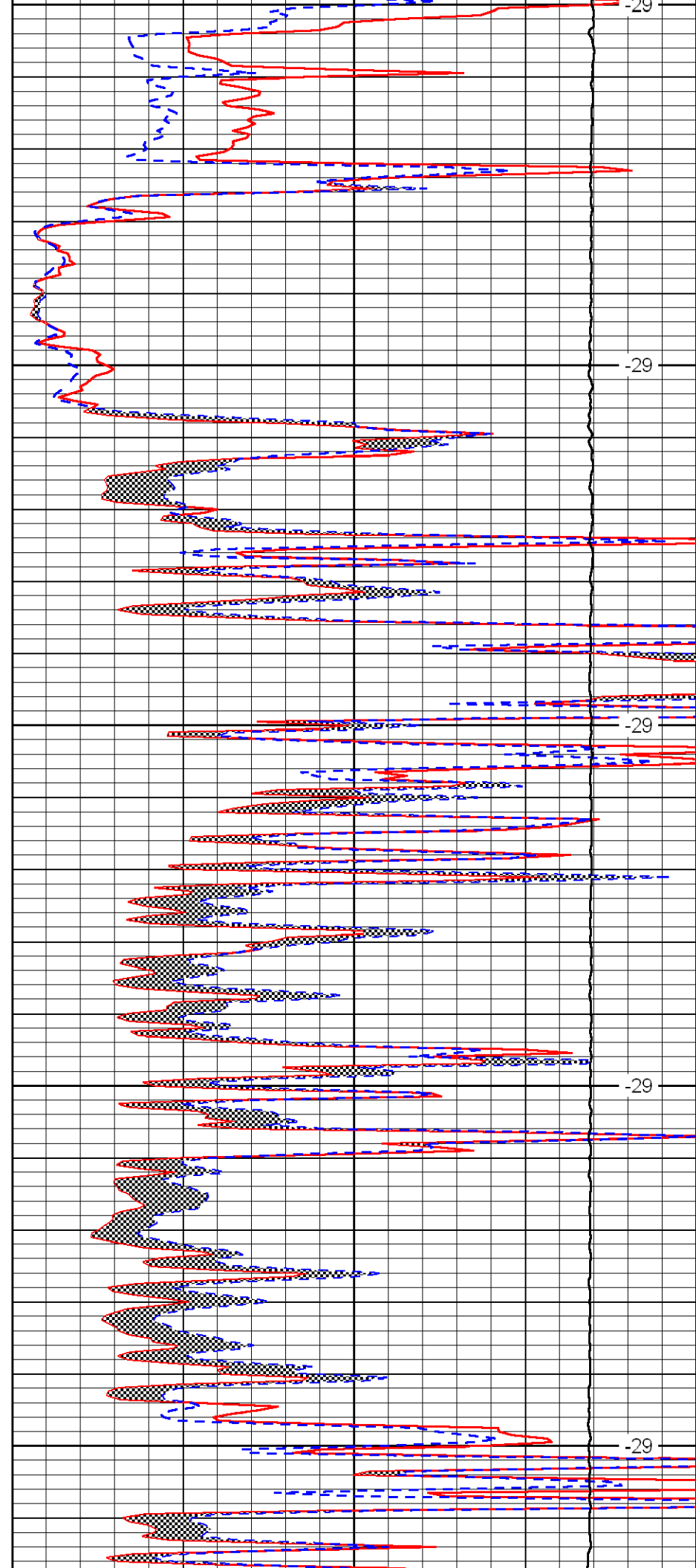
5100

5150

5200

5250

5300



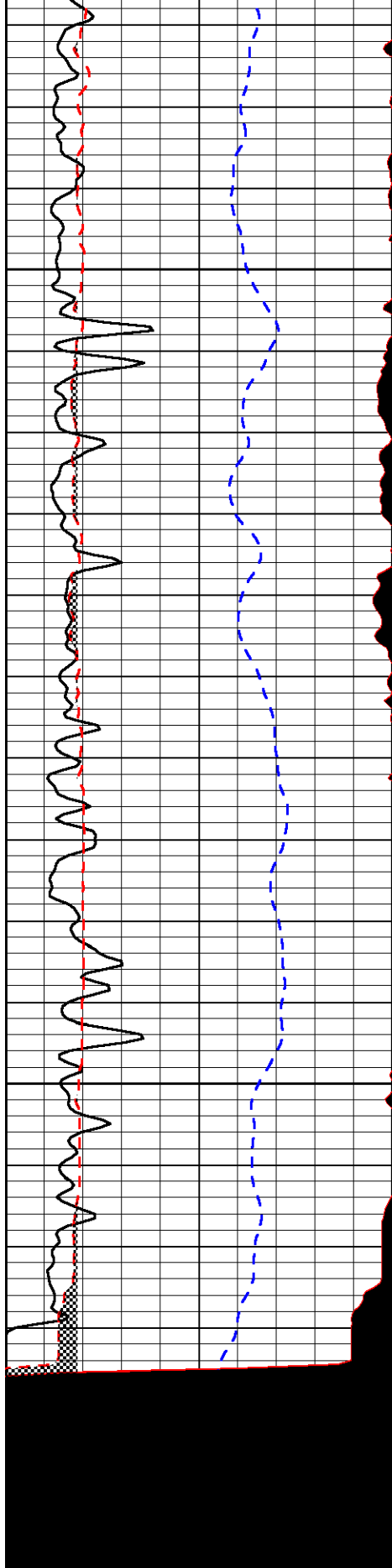
-29

-29

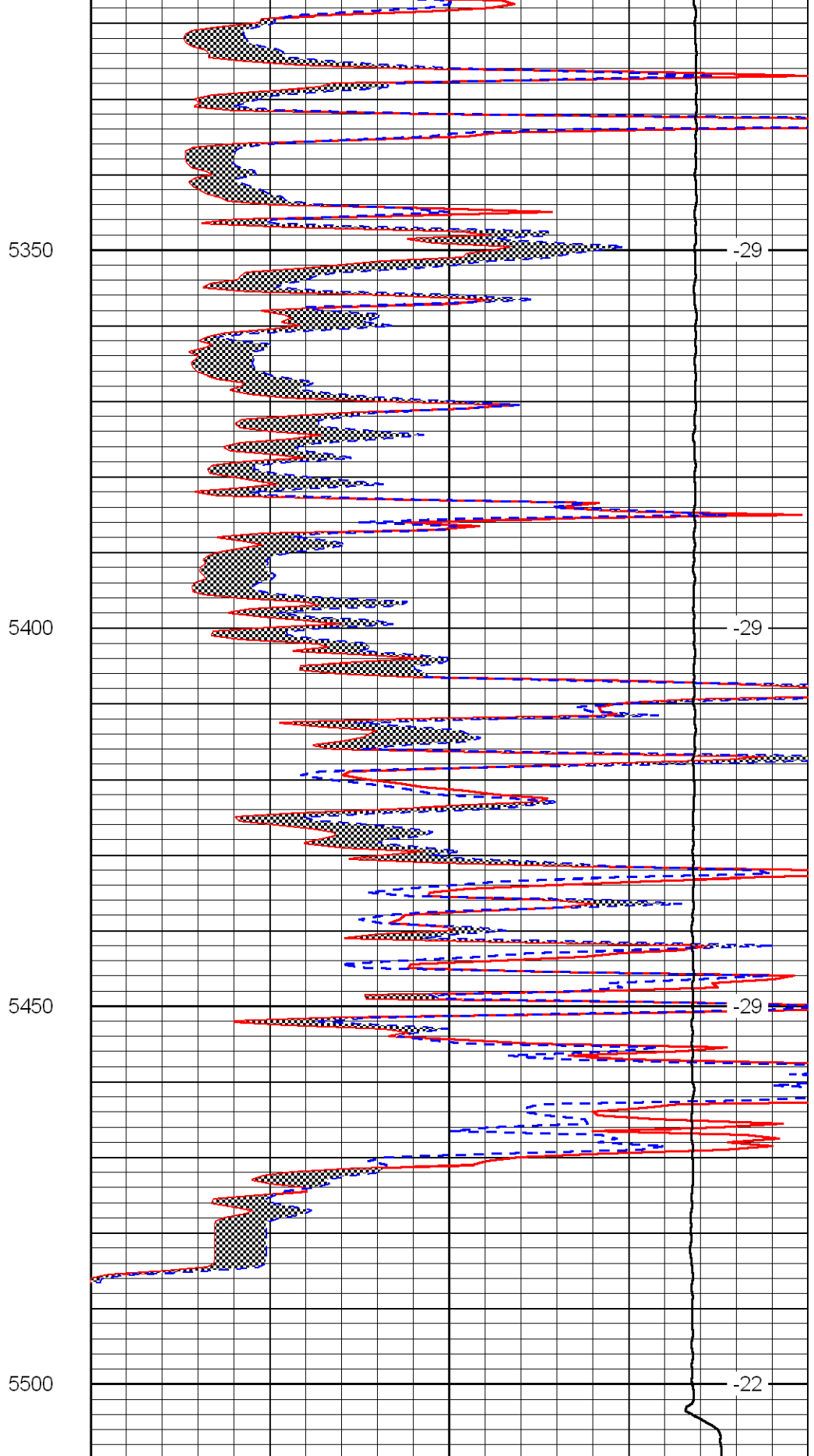
-29

-29

-29



0	Gamma Ray	150
6	MCAL (GAPI)	16
2.875	Mud Cake (GAPI)	7.875
-200	SP	0



0	Micro Inverse 1 X 1	40
0	Micro Normal 2''	40
10000	Line Weight	0

LSPD

