



SUPERIOR
Hays,
Kansas

COMPENSATED
NEUTRON/DENSITY
PE LOG

Company NEW GULF OPERATING, LLC.
 Well WRIGHT #1
 Field WILDCAT
 County LOGAN
 State KANSAS

Company NEW GULF OPERATING, LLC.
 Well WRIGHT #1
 Field WILDCAT
 County LOGAN State KANSAS

Location: API # : 15-109-20893-0000
 2023' FNL & 330' FEL
 N/2 - SE - SE - NE
 SEC 31 TWP 14S RGE 34W
 Permanent Datum GROUND LEVEL Elevation 3049
 Log Measured From KELLY BUSHING 8' A.G.L.
 Drilling Measured From KELLY BUSHING
 Other Services
 DIL/MEL
 Elevation
 K.B. 3057
 D.F. 3055
 G.L. 3049

Date	11/16/10
Run Number	ONE
Depth Driller	4770
Depth Logger	4769
Bottom Logged Interval	4745
Top Log Interval	3500
Casing Driller	8 5/8" @ 248'
Casing Logger	249'
Bit Size	7 7/8
Type Fluid in Hole	CHEMICAL MUD
Density / Viscosity	9.2/52
pH / Fluid Loss	10.0/8.0
Source of Sample	FLOWLINE
Rim @ Meas. Temp	0.55 @ 77F
Rmf @ Meas. Temp	0.41 @ 77F
Rmc @ Meas. Temp	0.66 @ 77F
Source of Rmf / Rmc	MEASURED
Rim @ BHT	0.34 @ 123F
Time Circulation Stopped	2 HOURS
Time Logger on Bottom	
Maximum Recorded Temperature	123F
Equipment Number	680
Location	HAYS, KS.
Recorded By	JEFF GRONEMEG
Witnessed By	BOB STOLZLE
	JOE JOE BIRDWELL

<<< Fold Here >>>

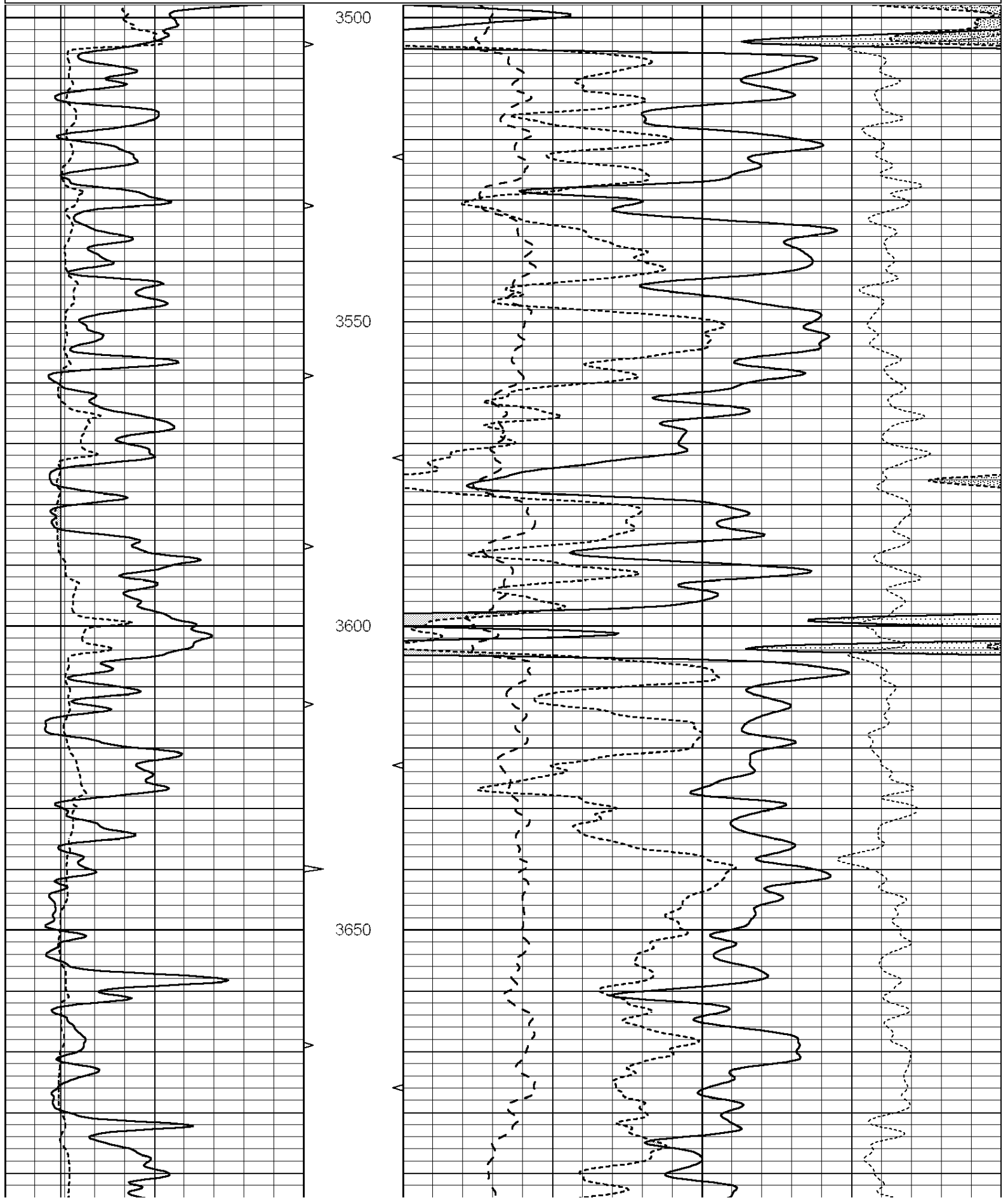
All interpretations are opinions based on inferences from electrical or other measurements and we cannot and do not guarantee the accuracy or correctness of any interpretation, and we shall not, except in the case of gross or willful negligence on our part, be liable or responsible for any loss, costs, damages, or expenses incurred or sustained by anyone resulting from any interpretation made by any of our officers, agents or employees. These interpretations are also subject to our general terms and conditions set out in our current Price Schedule.

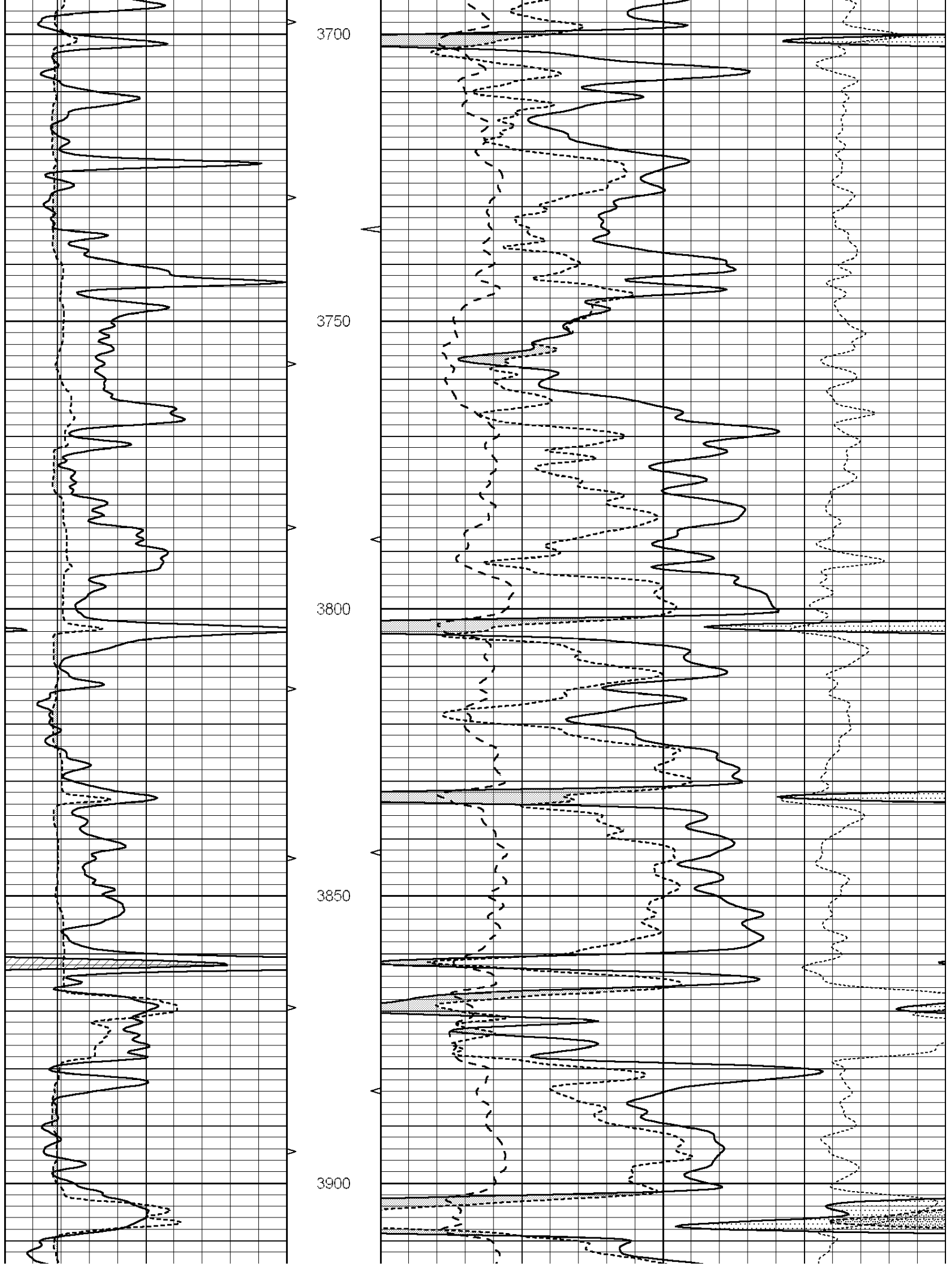
Comments

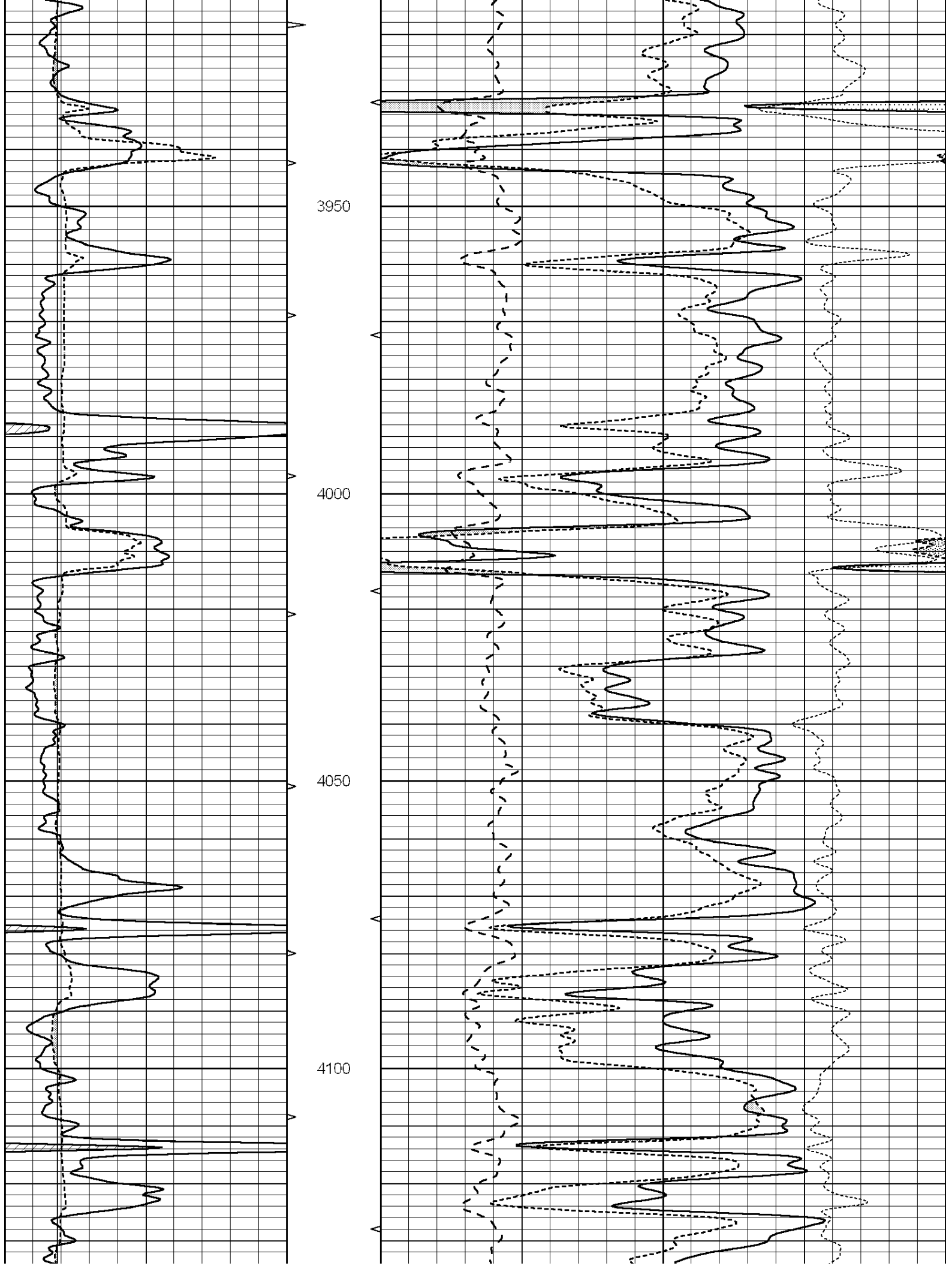
THANK YOU FOR USING SUPERIOR WELL SERVICE (785) 628-6395
 DIRECTIONS
 OAKLEY, KS - 23 MILES SOUTH TO GOLD RD. - 4 1/2 MILES WEST TO RD 390
 NORTH & WEST TO INDIAN RD - 10 MILES WEST TO RD 290
 SOUTH INTO

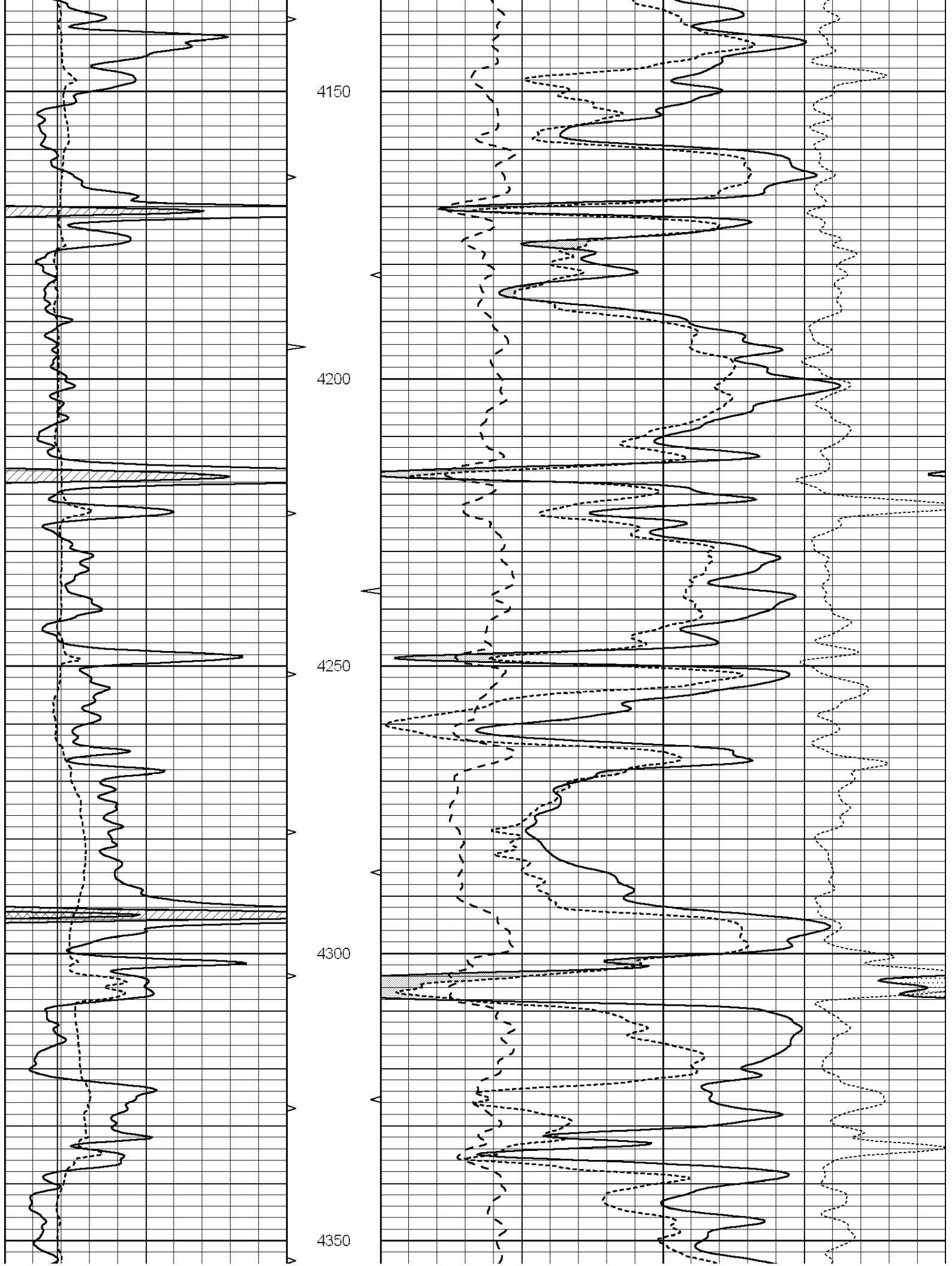
Database File: 006039pe.db
 Dataset Pathname: pass3.3
 Presentation Format: _ldt_neu
 Dataset Creation: Tue Nov 16 15:50:51 2010 by Calc Open-Cased 090629
 Charted by: Depth in Feet scaled 1:240

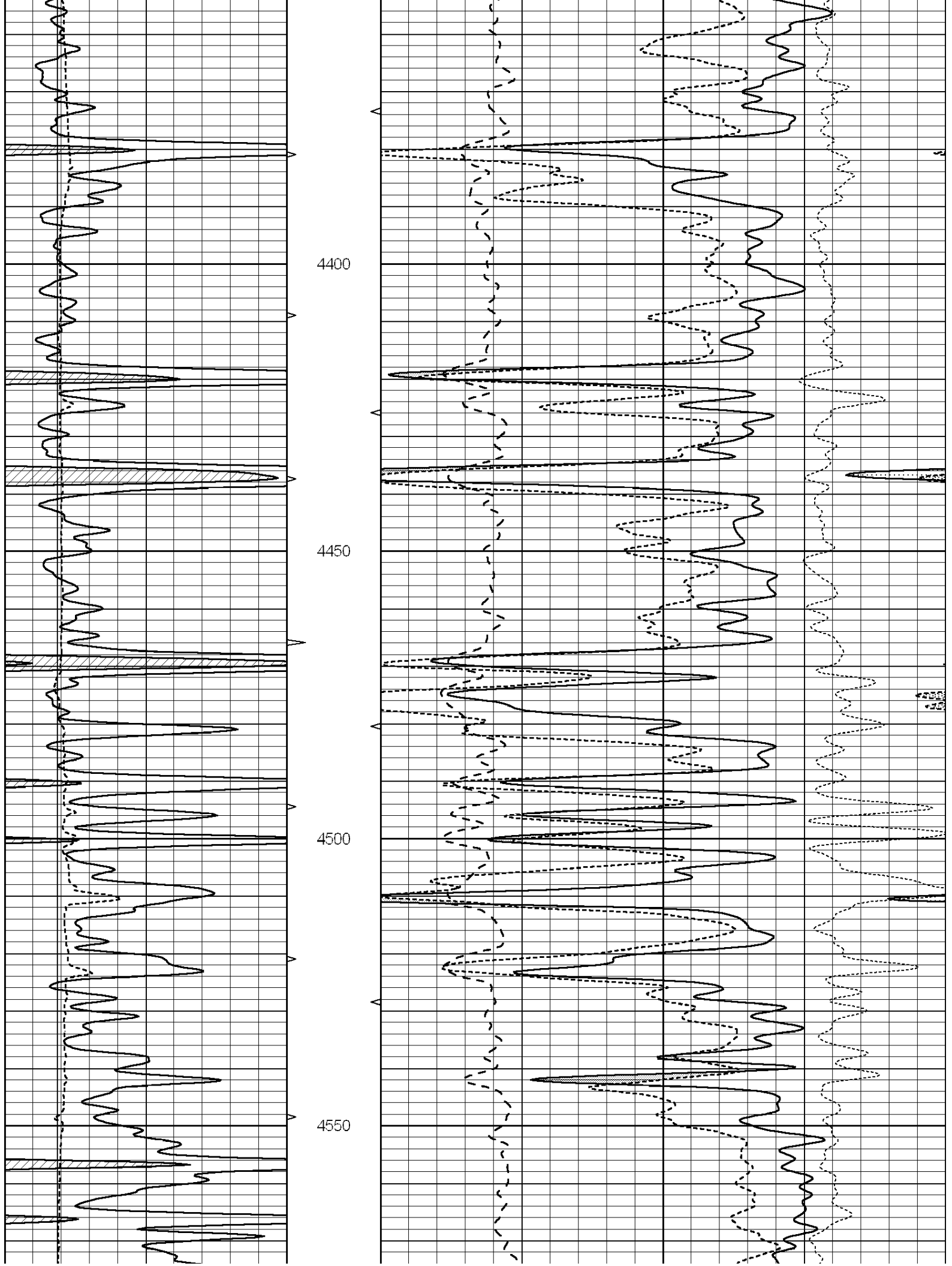
0	GAMMA RAY (GAPI)	150	ABHV	30	COMPENSATED DENSITY (pu)	-10
6	CALIPER (in)	16	10 (ft3)	0 30	COMPENSATED NEUTRON (pu)	-10
			TBHV	0	PE	10 -0.25
			0 (ft3)	10	CORRECTION (g/cc)	0.25

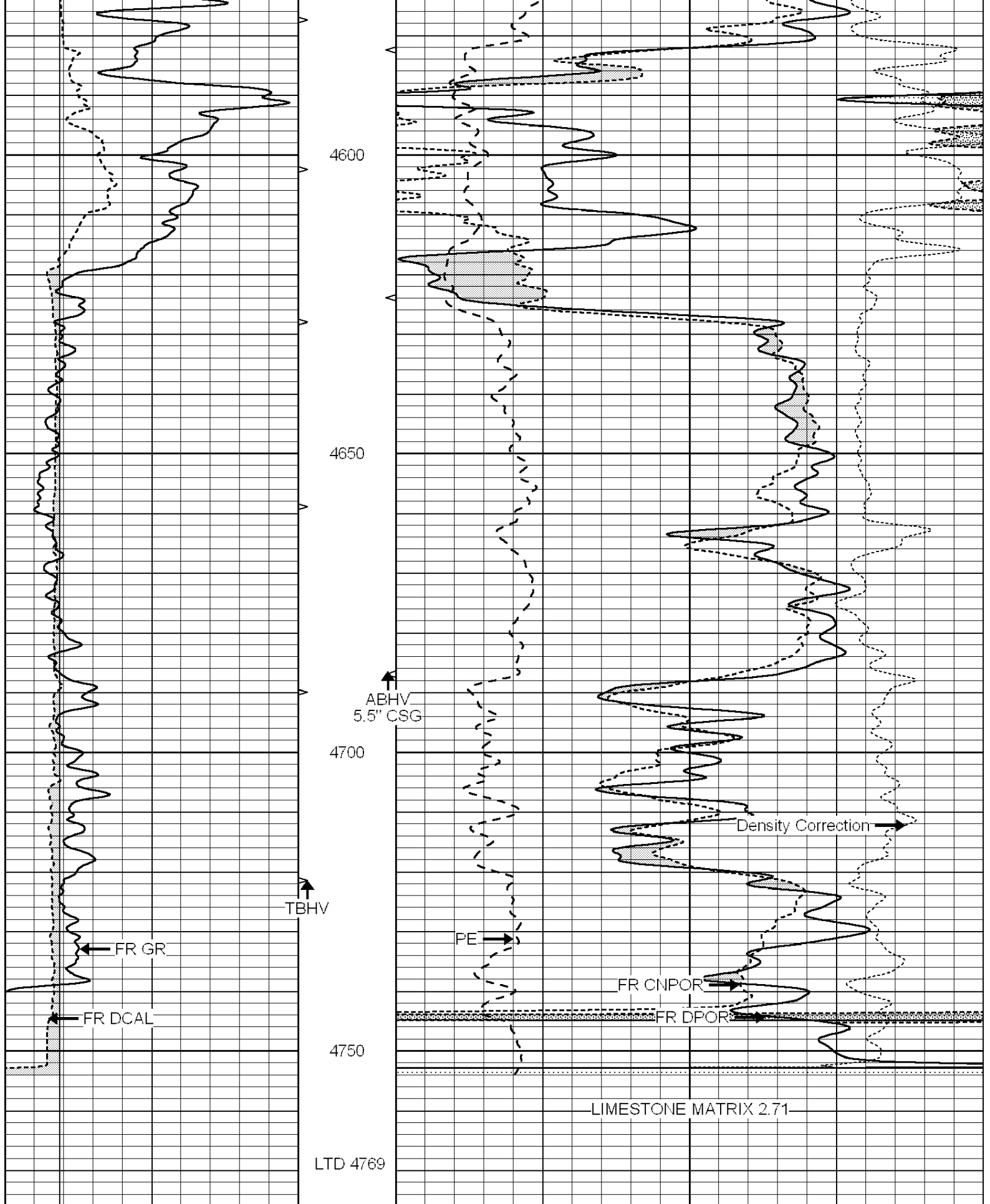












0	GAMMA RAY (GAPI)	150	ABHV	30	COMPENSATED DENSITY (pu)	-10			
6	CALIPER (in)	16	10 (ft3)	0	30	COMPENSATED NEUTRON (pu)	-10		
			TBHV	0	PE	10	-0.25	CORRECTION (g/cc)	0.25
			0 (ft3)	10					

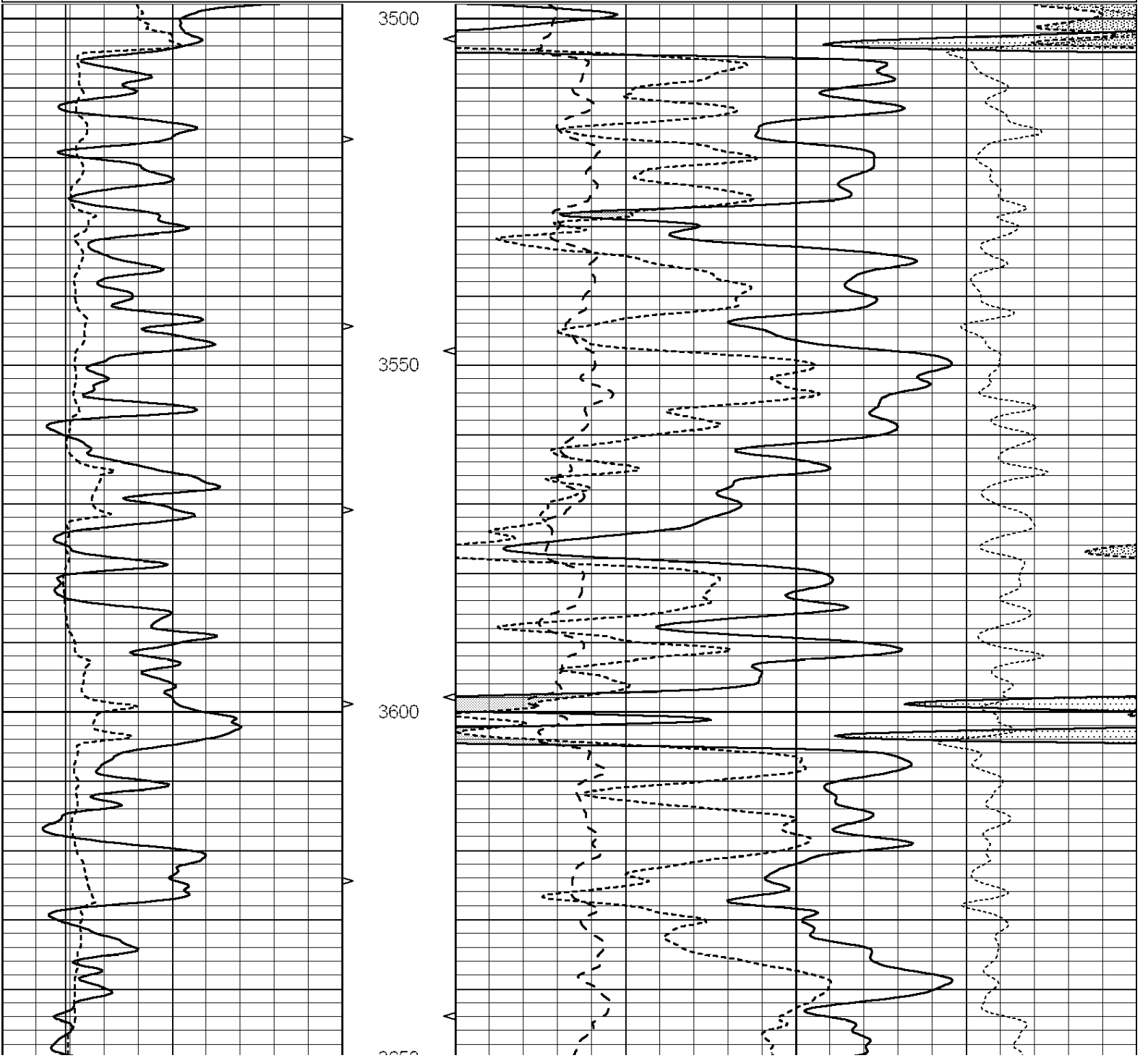


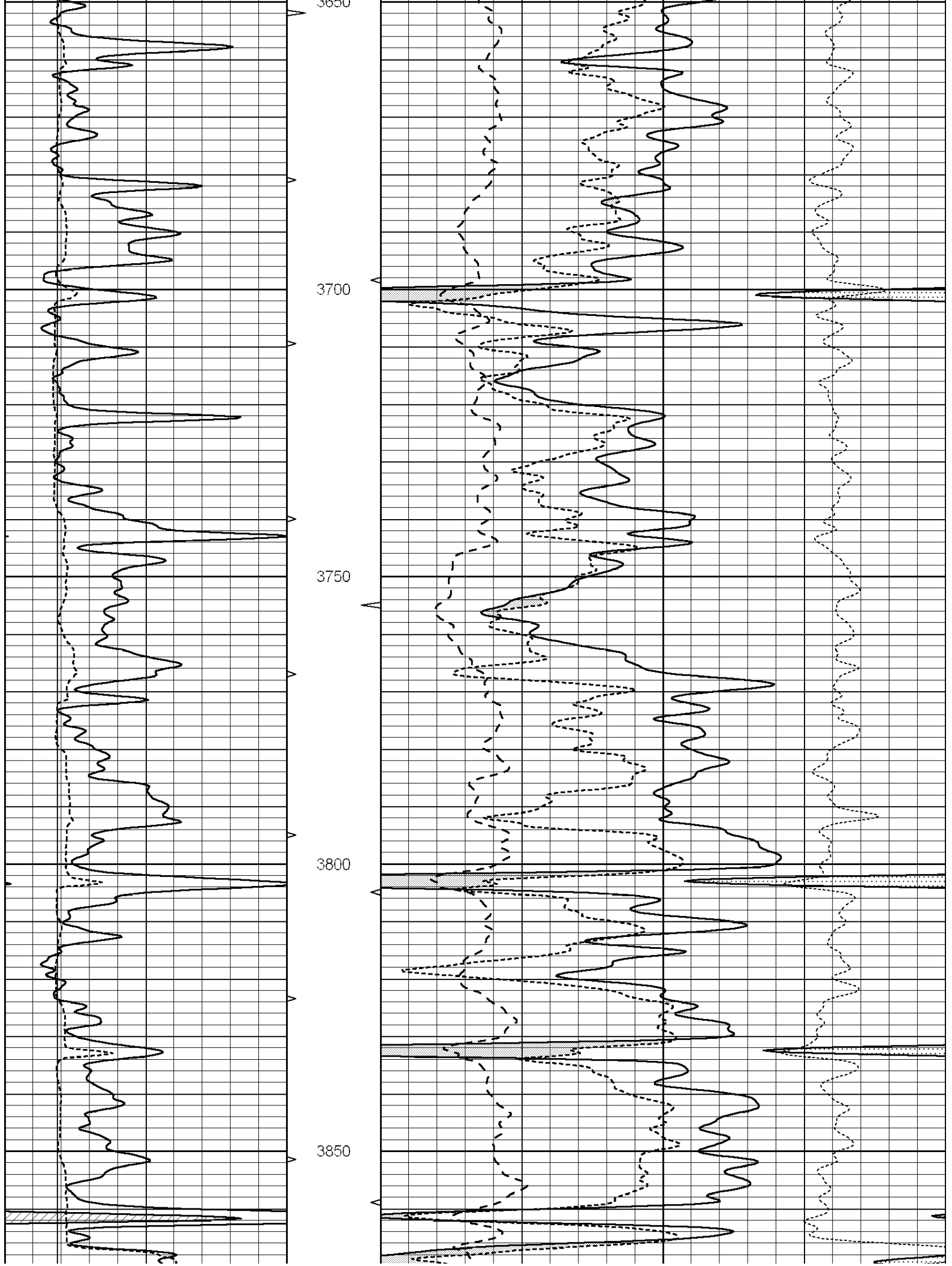
SUPERIOR
Hays,
Kansas

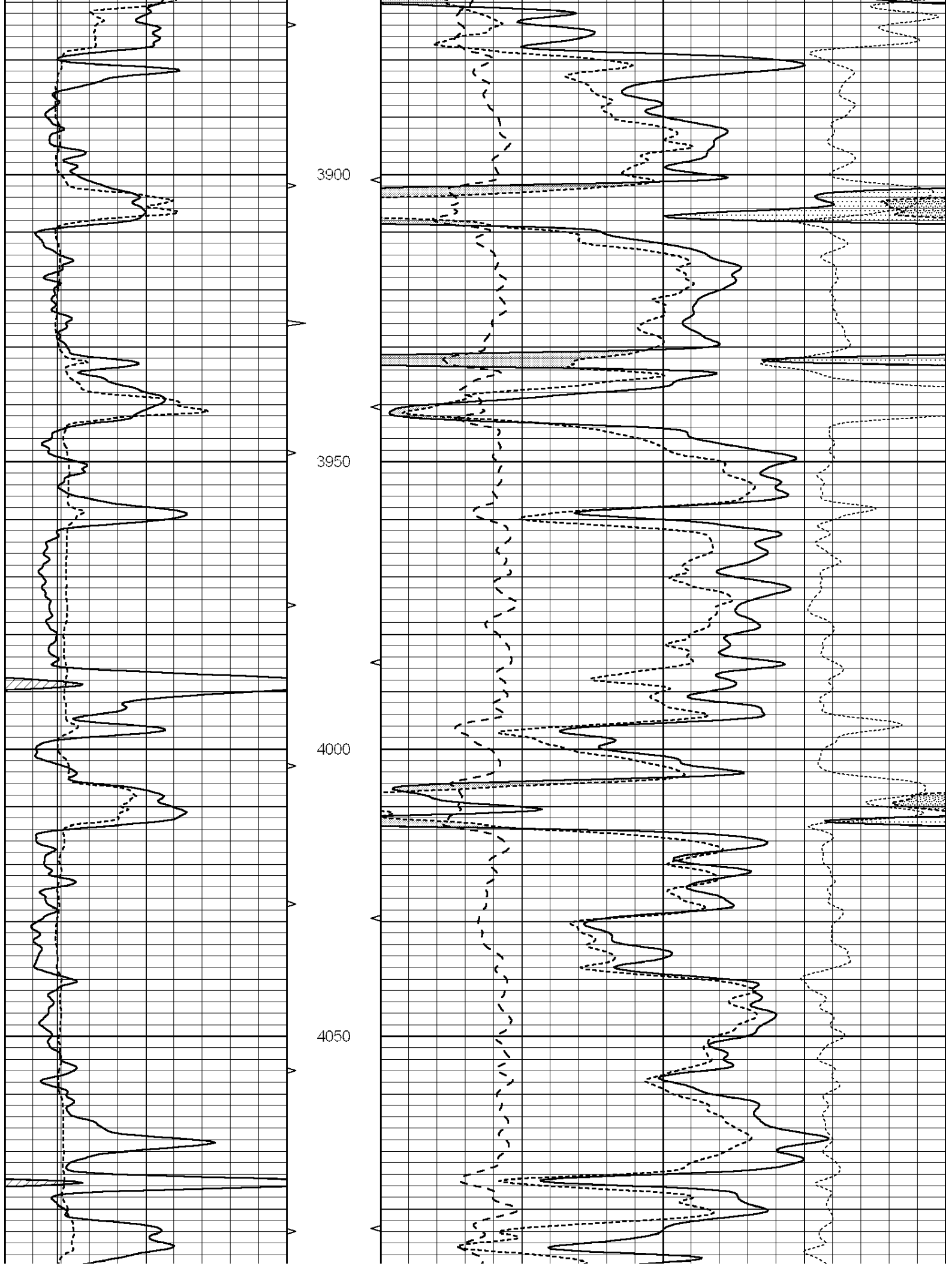
REPEAT SECTION

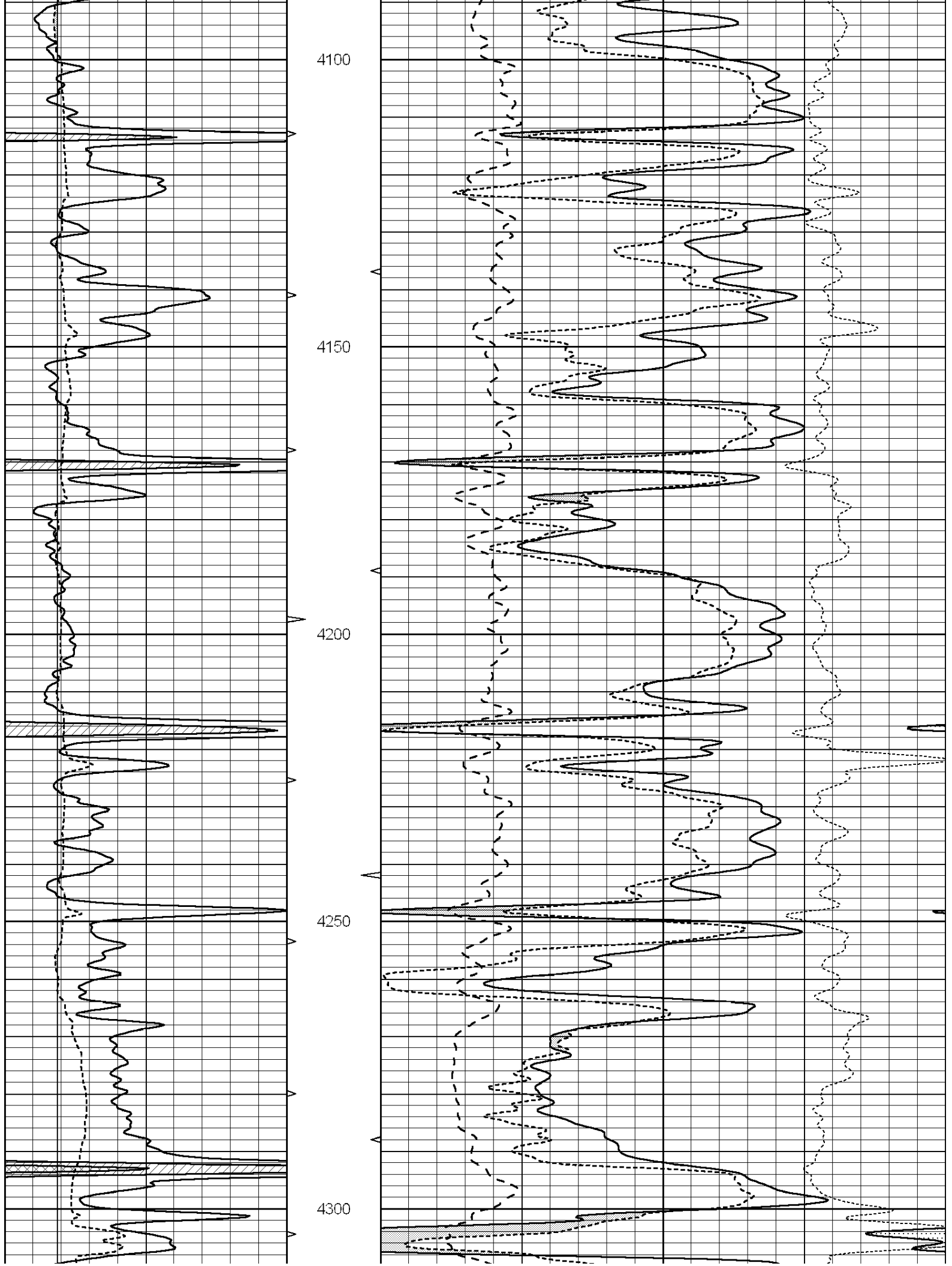
Database File: 006039pe.db
 Dataset Pathname: pass2.5
 Presentation Format: _ldt_neu
 Dataset Creation: Tue Nov 16 15:52:37 2010 by Calc Open-Cased 090629
 Charted by: Depth in Feet scaled 1:240

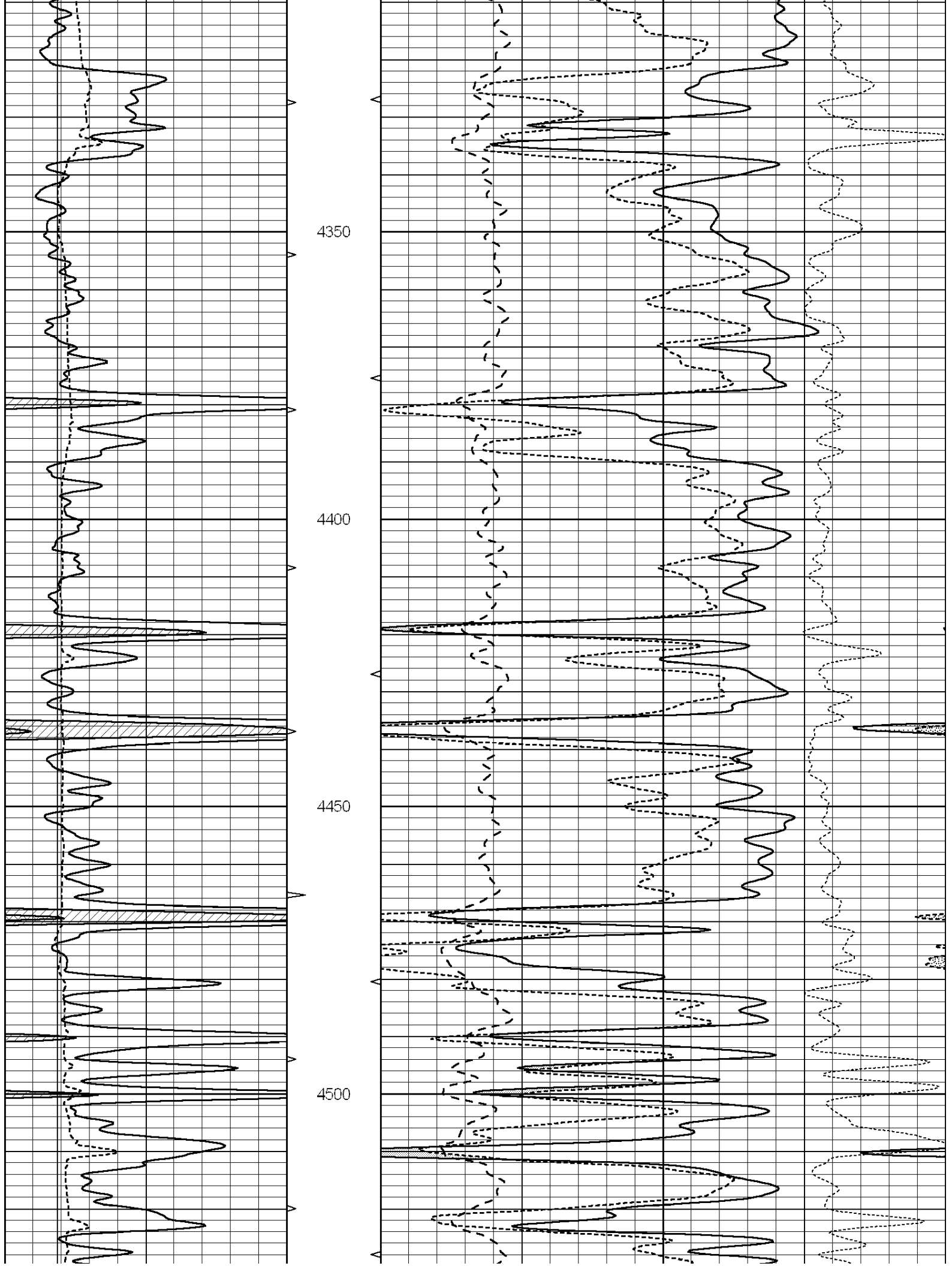
0	GAMMA RAY (GAPI)	150	ABHV	30	COMPENSATED DENSITY (pu)			-10	
6	CALIPER (in)	16	10 (ft3)	0	30	COMPENSATED NEUTRON (pu)			-10
			TBHV	0	PE	10	-0.25	CORRECTION (g/cc)	0.25
			0 (ft3)	10					

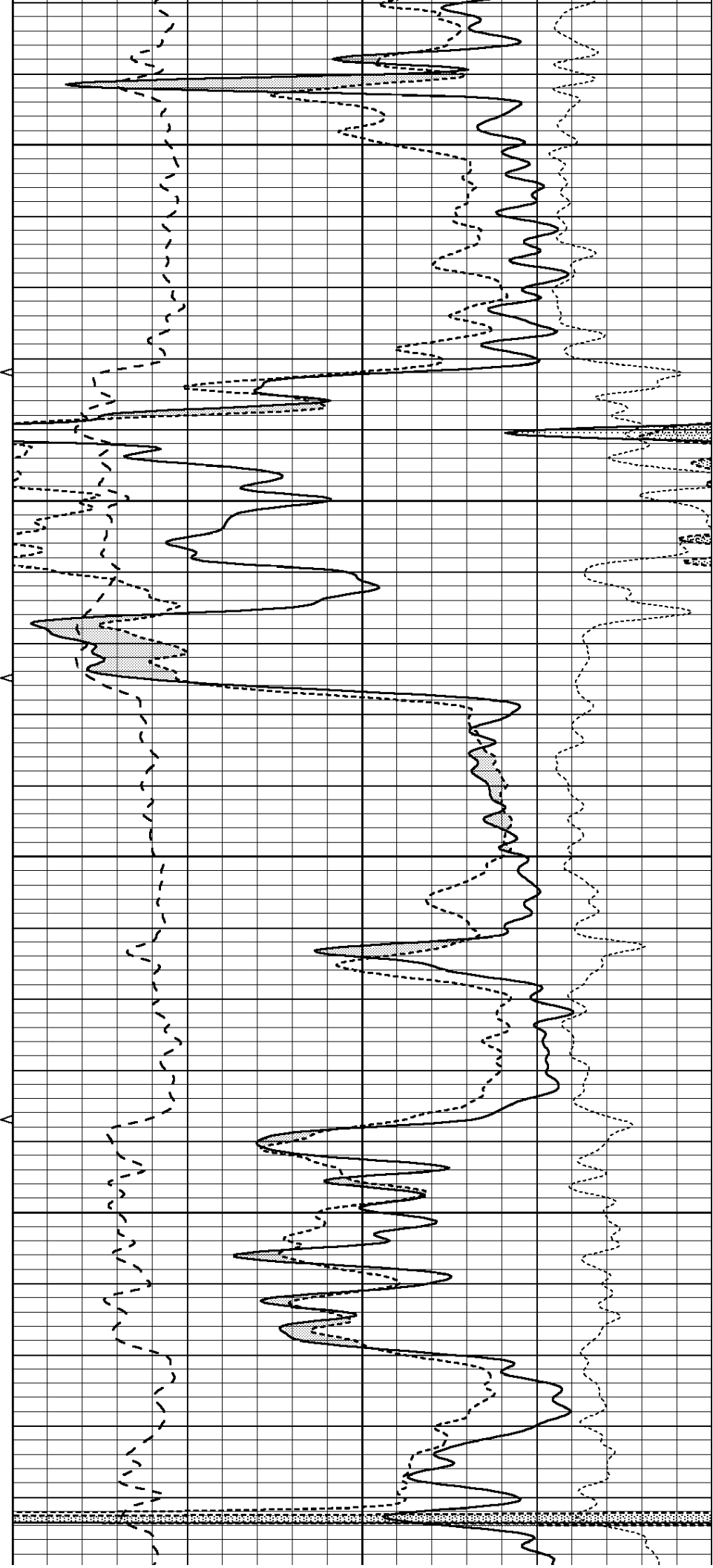
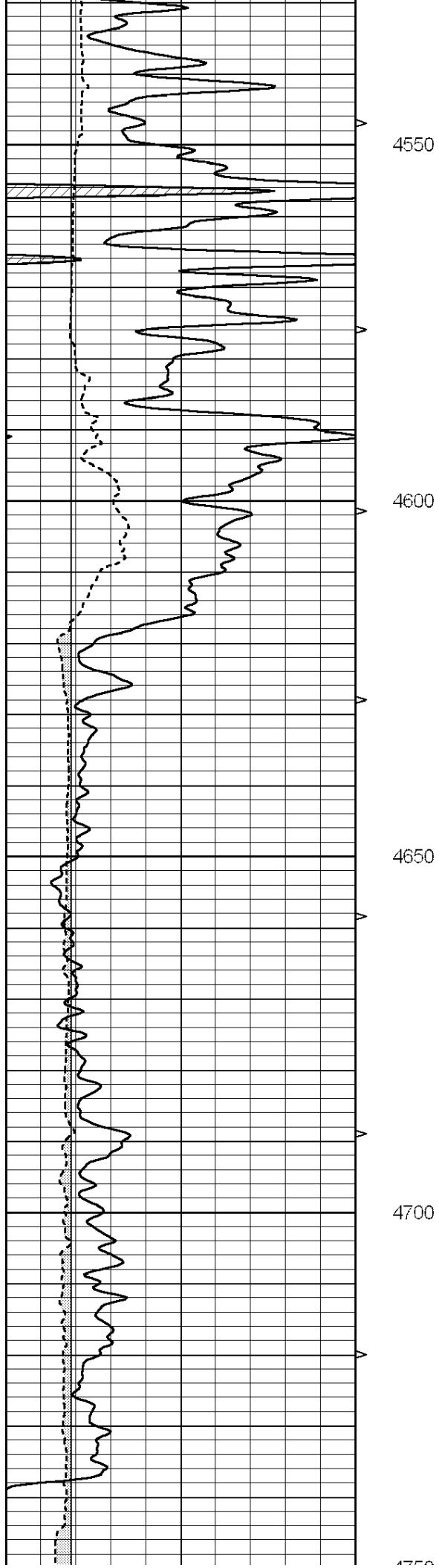












			4750						
0	GAMMA RAY (GAPI)	150	ABHV	30	COMPENSATED DENSITY (pu)			-10	
6	CALIPER (in)	16	10 (ft3)	0	30	COMPENSATED NEUTRON (pu)			-10
			TBHV	0	PE	10	-0.25	CORRECTION (g/cc)	0.25
			0 (ft3)	10					

Calibration Report

Database File: 006039pe.db
 Dataset Pathname: pass3.3
 Dataset Creation: Tue Nov 16 15:50:51 2010 by Calc Open-Cased 090629

Dual Induction Calibration Report

Serial-Model: PROBE7-DILG
 Surface Cal Performed: Wed Jul 30 06:14:24 2008
 Downhole Cal Performed: Mon Jul 28 12:02:56 2008
 After Survey Verification Performed: Mon Jul 28 12:02:56 2008

Surface Calibration

Loop:	Readings				References			Results	
	Air	Loop			Air	Loop		m	b
Deep	-0.014	0.629	V	0.000	400.000	mmho/m	621.923	8.759	
Medium	0.039	0.728	V	0.000	464.000	mmho/m	673.322	-26.058	
Internal:	Zero	Cal		Zero	Cal		m	b	
Deep	0.011	0.610	V	0.000	400.000	mmho/m	667.135	-7.256	
Medium	0.005	0.712	V	0.000	464.000	mmho/m	655.677	-3.102	

Downhole Calibration

	Readings				References			Results	
	Zero	Cal			Zero	Cal		m'	b'
Deep	0.000	0.000	mmho/m	14.508	388.384	mmho/m	1.000	0.000	
Medium	0.000	0.000	mmho/m	166.367	504.400	mmho/m	1.000	0.000	
LL3		7.500	V		1400.000	Ohm-m			
		0.000	V		20.000	Ohm-m			
		-7.200	V		4000.000	mmho-m			

After Survey Verification

	Readings				Targets			Results	
	Zero	Cal			Zero	Cal		m'	b'
Deep	0.000	0.000	mmho/m	0.000	0.000	mmho/m	0.000	0.000	
Medium	0.000	0.000	mmho/m	0.000	0.000	mmho/m	0.000	0.000	
LL3		1.000	Ohm-m		1.000	Ohm-m			
		0.000	Ohm-m		0.000	Ohm-m			
		1.000	mmho-m		1.000	mmho-m			

Litho Density Calibration Report
 Serial: 002 Model: PRB
 Performed Mon Oct 29 15:40:49 2007

	Background	Magnesium	Aluminum	Sandstone	
Window 1	1056.3	9118.0	2809.7	10378.4	cps
Window 2	969.9	7671.9	2431.6	8565.8	cps
Window 3	683.8	2939.8	1161.0	3161.8	cps
Window 4	231.4	231.6	226.7	230.8	cps
Long Space	0.0	6702.0	1461.7	7595.9	cps
Short Space	1.2	1433.6	959.4	1568.6	cps
Rho		1.7100	2.5900	1.3800	g/cc
Pe			2.5700	1.5500	

Rib Angle	: 45.2	Rib Slope	: 1.008	Density/Spine Ratio	: 0.559
Spine Angle	: 75.2	Spine Slope	: 3.791	Spine Intercept	: -18.7

Caliper		
	Readings	Reference
Low Ref	2.3	8.0
High Ref	4.3	14.0
	Gain: 3.1	Offset: -0.9

Compensated Neutron Calibration Report

Serial Number:	5I
Tool Model:	G

CALIBRATION

Detector	Readings	Target	Normalization
Short Space	1.00 cps	1.00 cps	1.0000
Long Space	1.00 cps	1.00 cps	1.0000

Gamma Ray Calibration Report

Serial Number:	GR6
Tool Model:	OPEN
Performed:	Wed Jul 14 14:14:30 2010
Calibrator Value:	150.0 GAPI
Background Reading:	0.0 cps
Calibrator Reading:	276.0 cps
Sensitivity:	0.5335 GAPI/cps