



SUPERIOR
Hays,
Kansas

MICRO
LOG

Company NEW GULF OPERATING, LLC.
Well WRIGHT #1
Field WILDCAT
County LOGAN
State KANSAS

Company NEW GULF OPERATING, LLC.
Well WRIGHT #1
Field WILDCAT
County LOGAN State KANSAS

Location: API # : 15-109-20893-0000
2023' FNL & 330' FEL
N/2 - SE - SE - NE
SEC 31 TWP 14S RGE 34W
Permanent Datum GROUND LEVEL Elevation 3049
Log Measured From KELLY BUSHING 8' A.G.L.
Drilling Measured From KELLY BUSHING
Other Services
CDL/CNL
PE/DIL
Elevation
K.B. 3057
D.F. 3055
G.L. 3049

Date	11/16/10
Run Number	TWO
Depth Driller	4770
Depth Logger	4769
Bottom Logged Interval	4767
Top Log Interval	3500
Casing Driller	8 5/8" @ 248'
Casing Logger	249'
Bit Size	7 7/8
Type Fluid in Hole	CHEMICAL MUD
Density / Viscosity	9.2/52
pH / Fluid Loss	10.0/8.0
Source of Sample	FLOWLINE
Rim @ Meas. Temp	0.55 @ 77F
Rmf @ Meas. Temp	0.41 @ 77F
Rmc @ Meas. Temp	0.66 @ 77F
Source of Rmf / Rmc	MEASURED
Rim @ BHT	0.34 @ 123F
Time Circulation Stopped	2 HOURS
Time Logger on Bottom	
Maximum Recorded Temperature	123F
Equipment Number	680
Location	HAYS, KS.
Recorded By	JEFF GRONEMEG
Witnessed By	BOB STOLZLE
	JOE JOE BIRDWELL

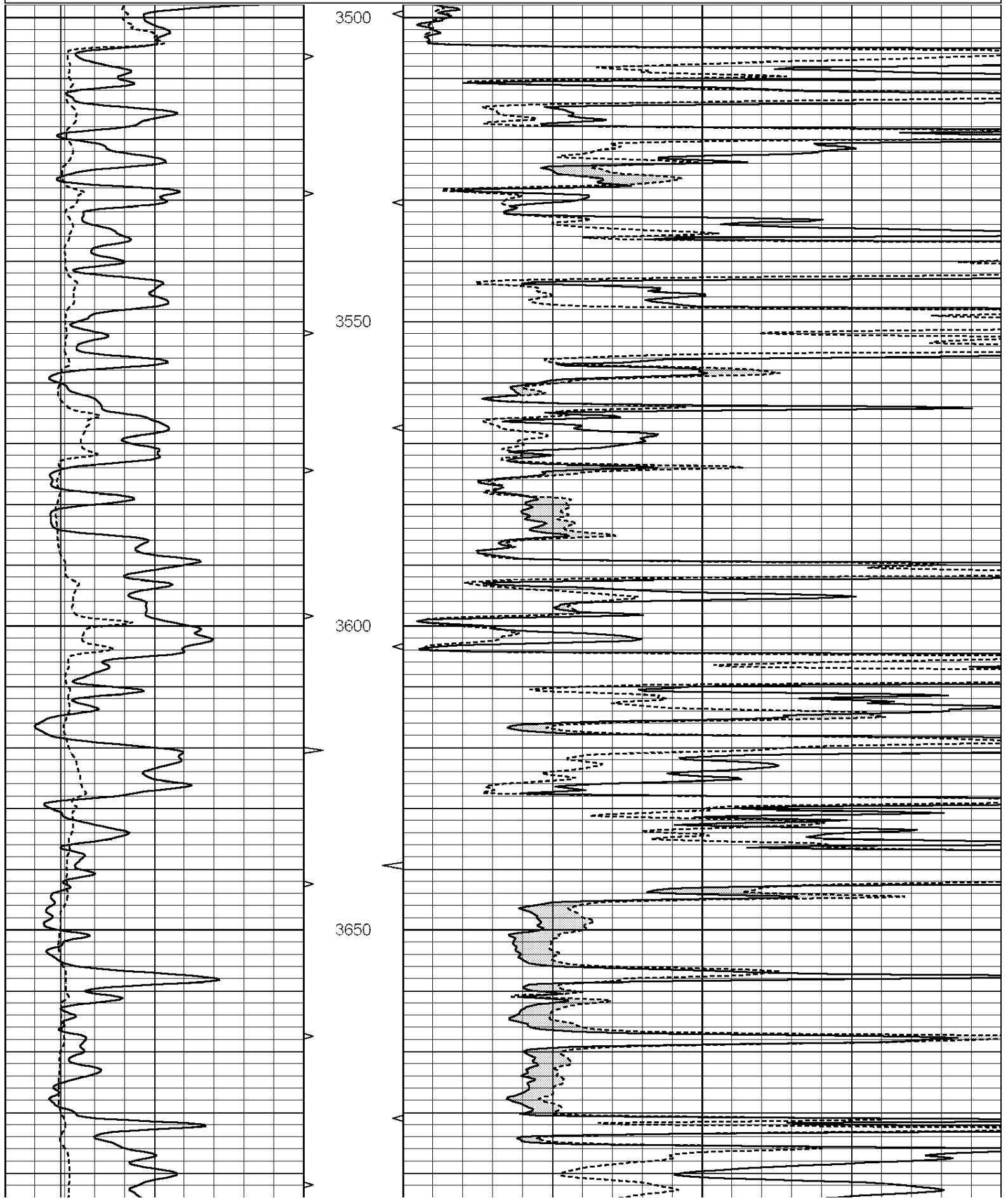
<<< Fold Here >>>

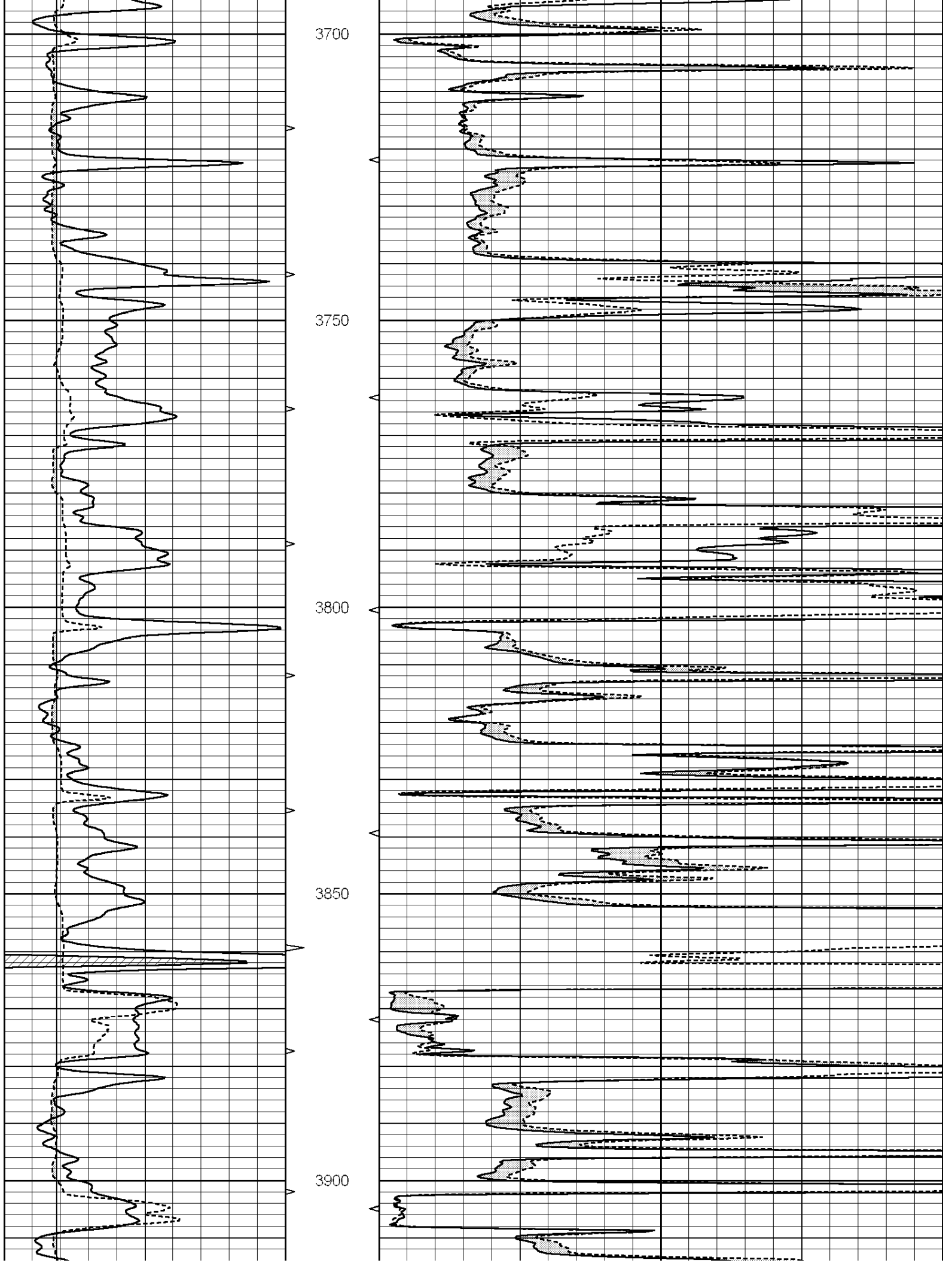
All interpretations are opinions based on inferences from electrical or other measurements and we cannot and do not guarantee the accuracy or correctness of any interpretation, and we shall not, except in the case of gross or willful negligence on our part, be liable or responsible for any loss, costs, damages, or expenses incurred or sustained by anyone resulting from any interpretation made by any of our officers, agents or employees. These interpretations are also subject to our general terms and conditions set out in our current Price Schedule.

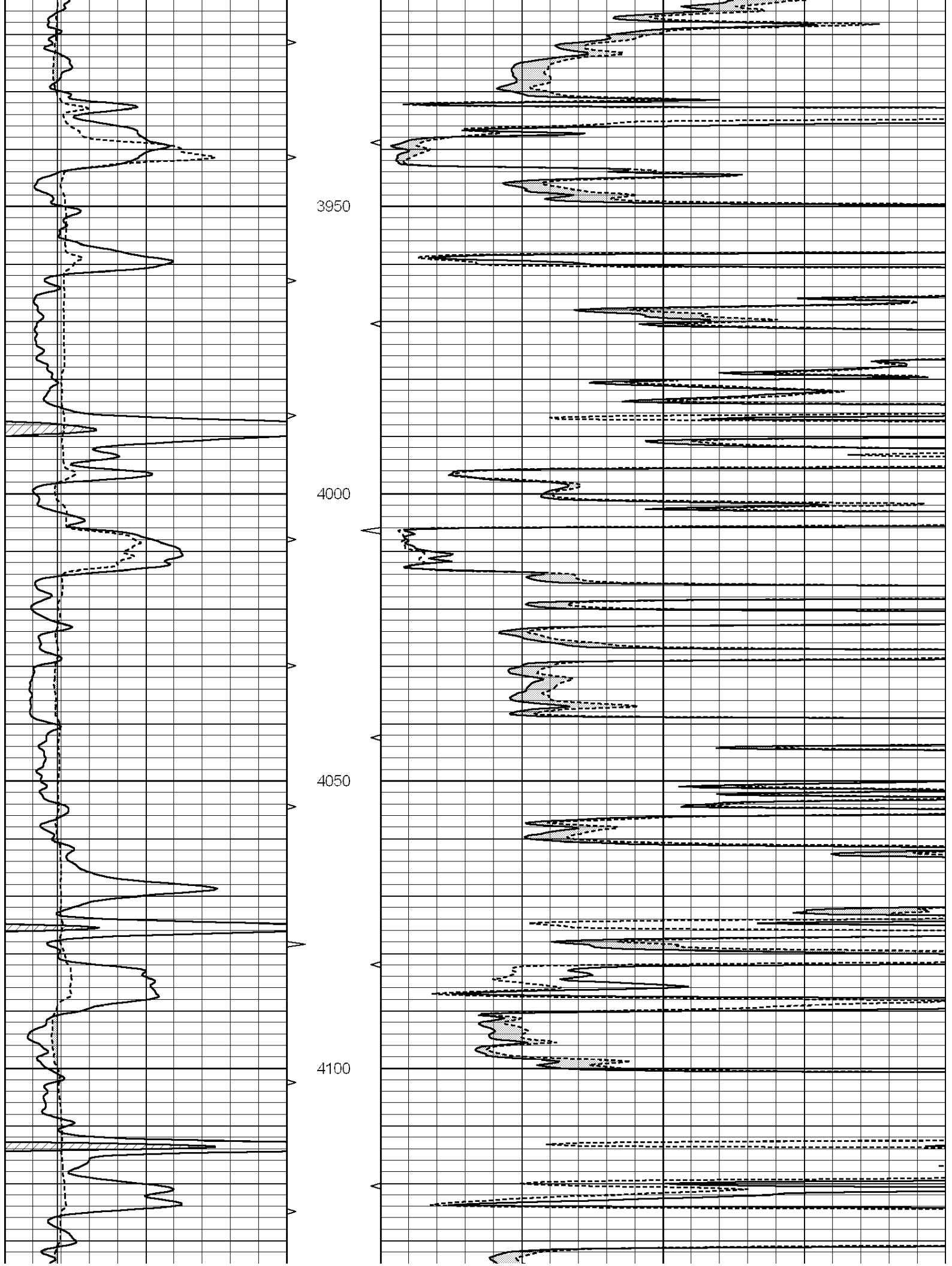
Comments

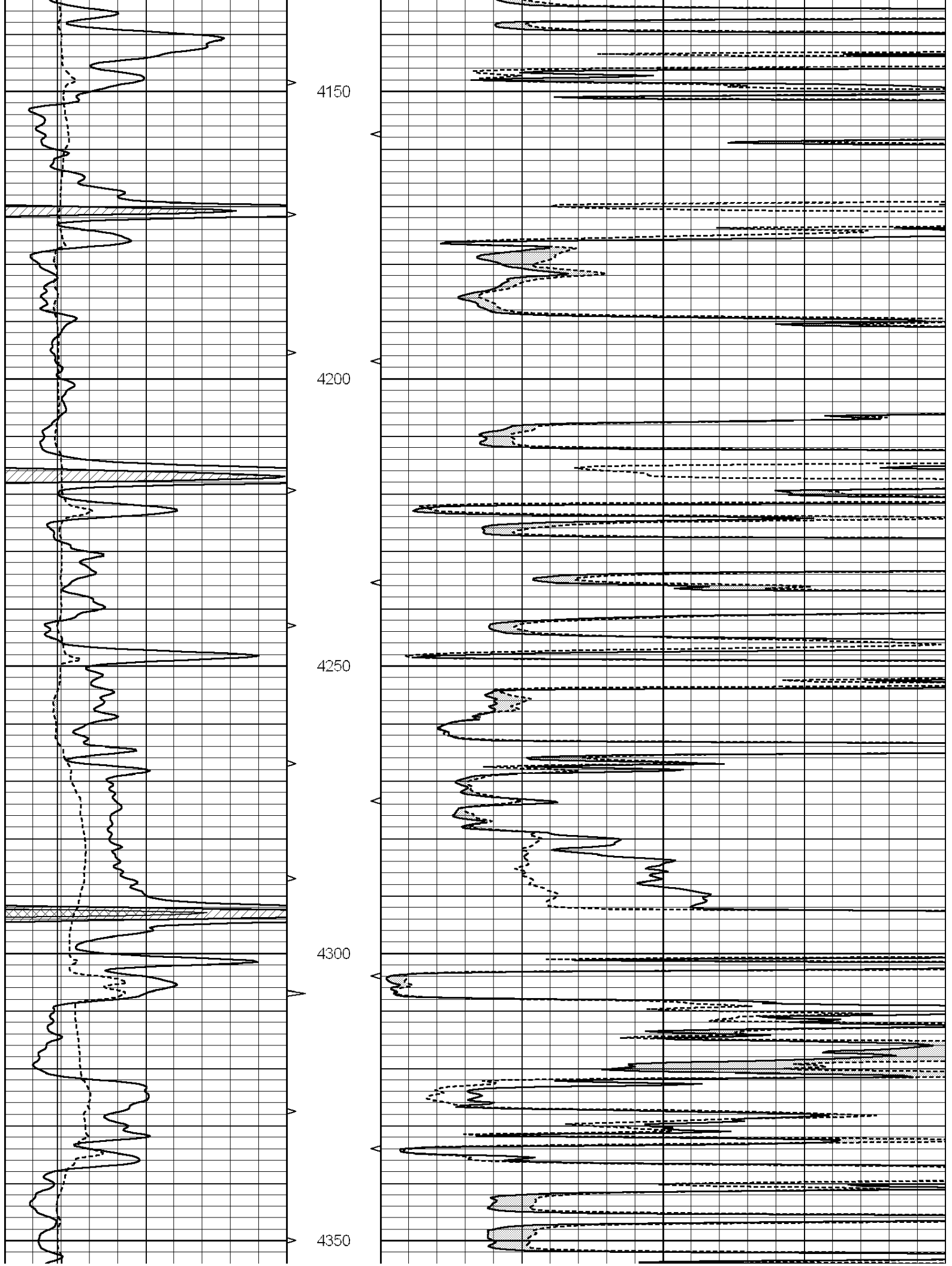
THANK YOU FOR USING SUPERIOR WELL SERVICE (785) 628-6395
DIRECTIONS
OAKLEY, KS - 23 MILES SOUTH TO GOLD RD. - 4 1/2 MILES WEST TO RD 390
NORTH & WEST TO INDIAN RD - 10 MILES WEST TO RD 290
SOUTH INTO

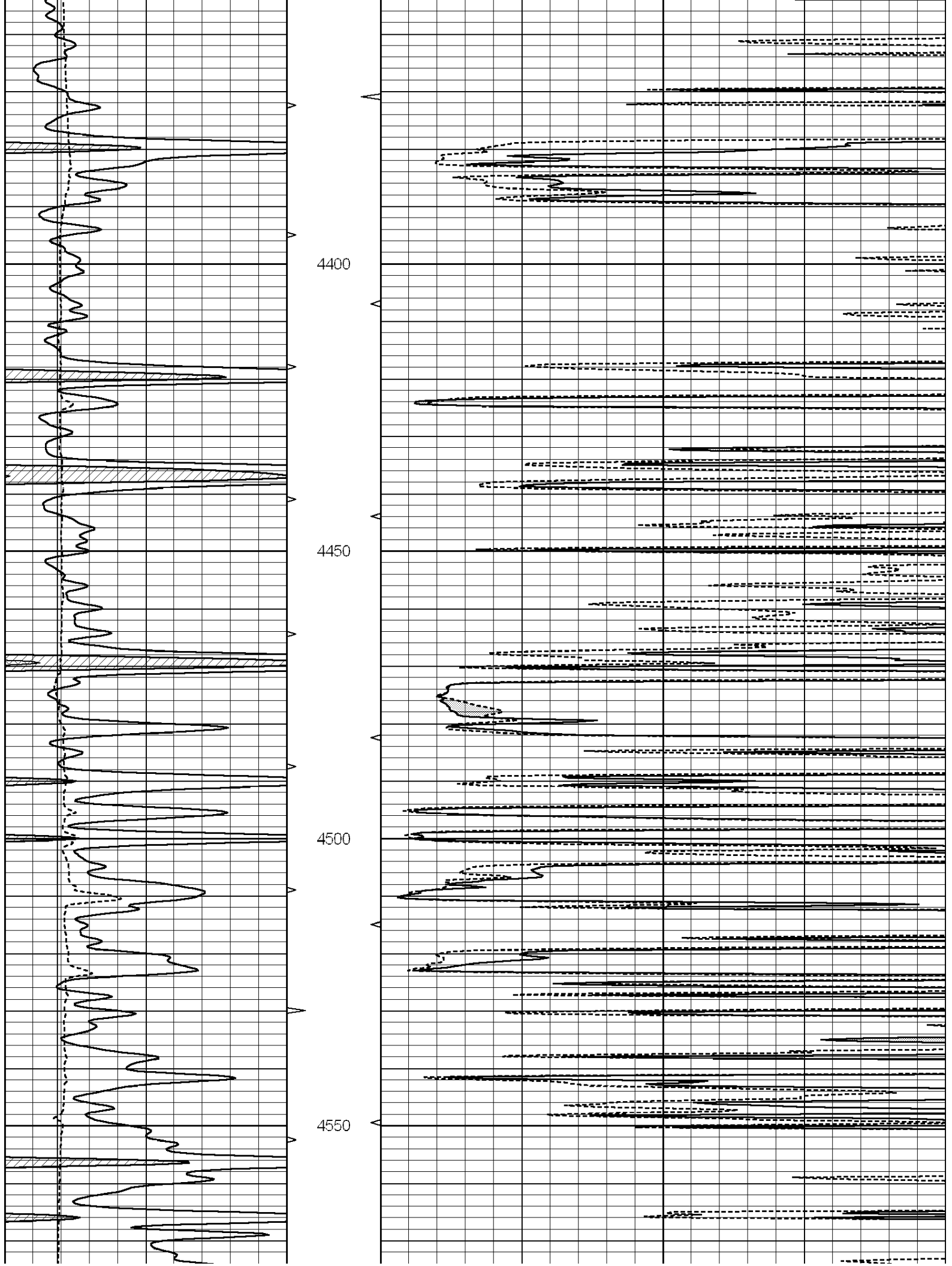
0	GAMMA RAY (GAPI)	150	ABHV	0	MEL1.5 (Ohm-m)	40
6	CALIPER (in)	16	10 (ft3)	0 0	MEL2.0 (Ohm-m)	40
			TBHV			
			0 (ft3)			

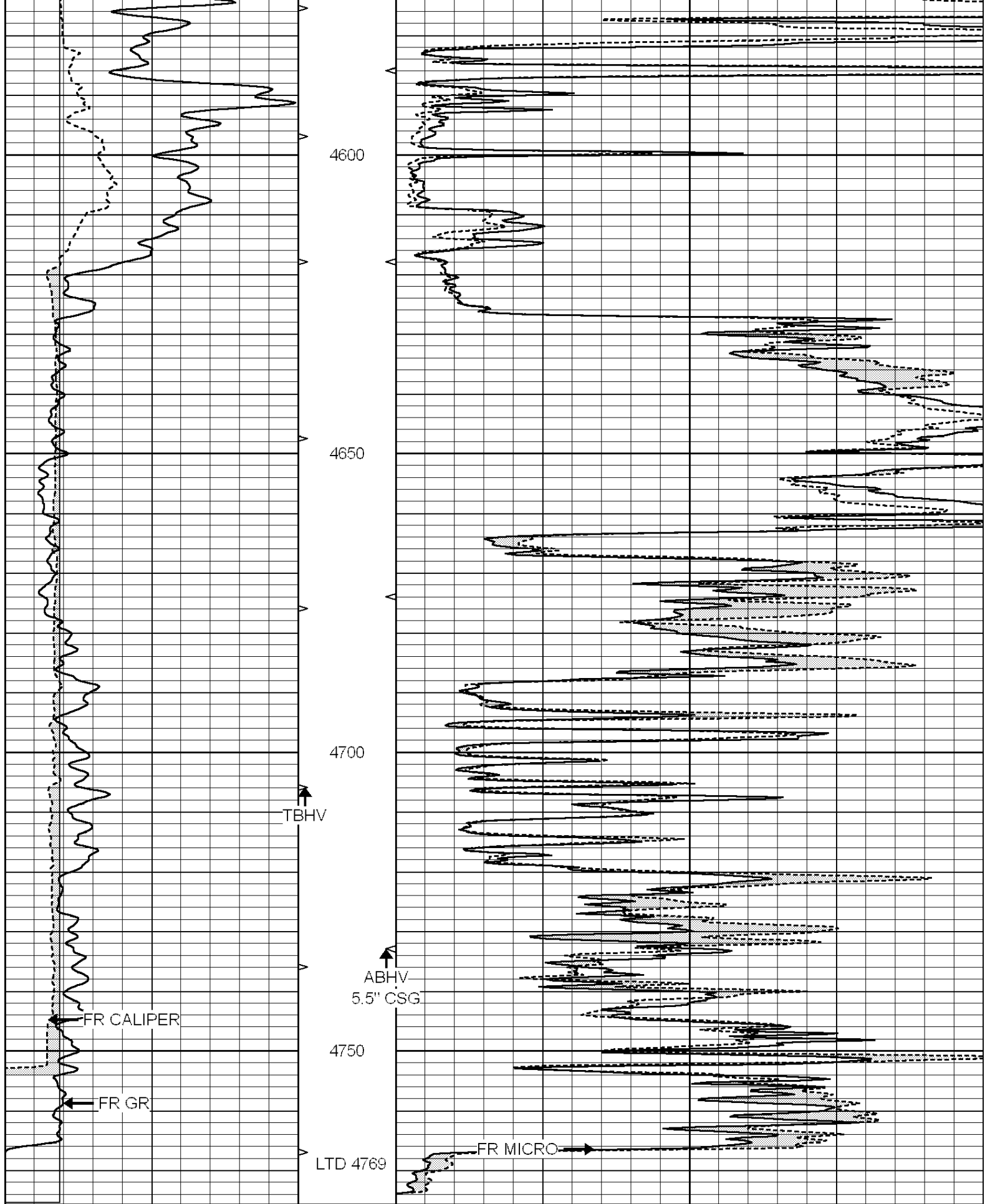












0	GAMMA RAY (GAPI)	150	ABHV	0	MEL1.5 (Ohm-m)	40
6	CALIPER (in)	16	10 (ft3)	0 0	MEL2.0 (Ohm-m)	40
			TBHV			
			0 (ft3)	10		

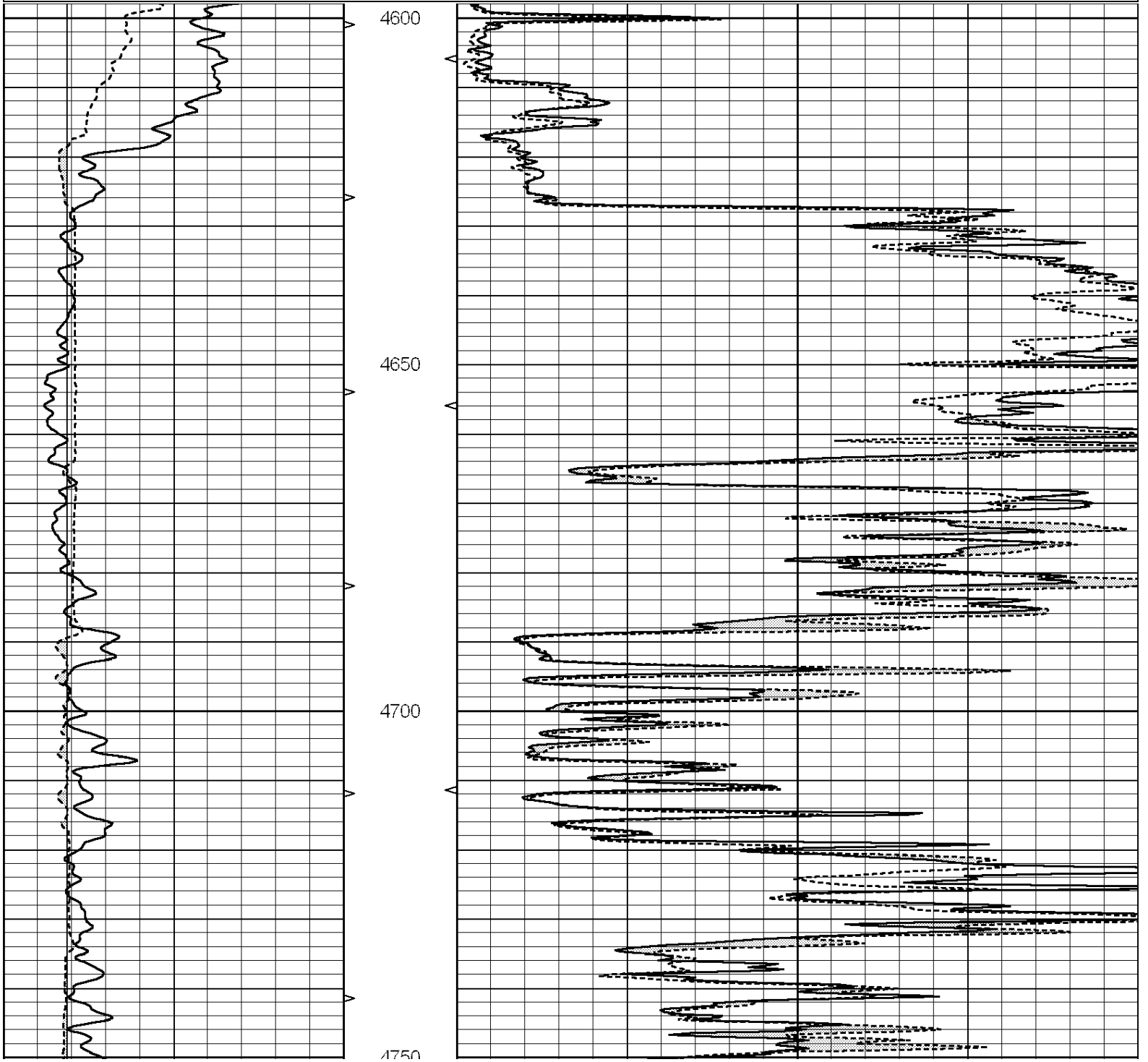


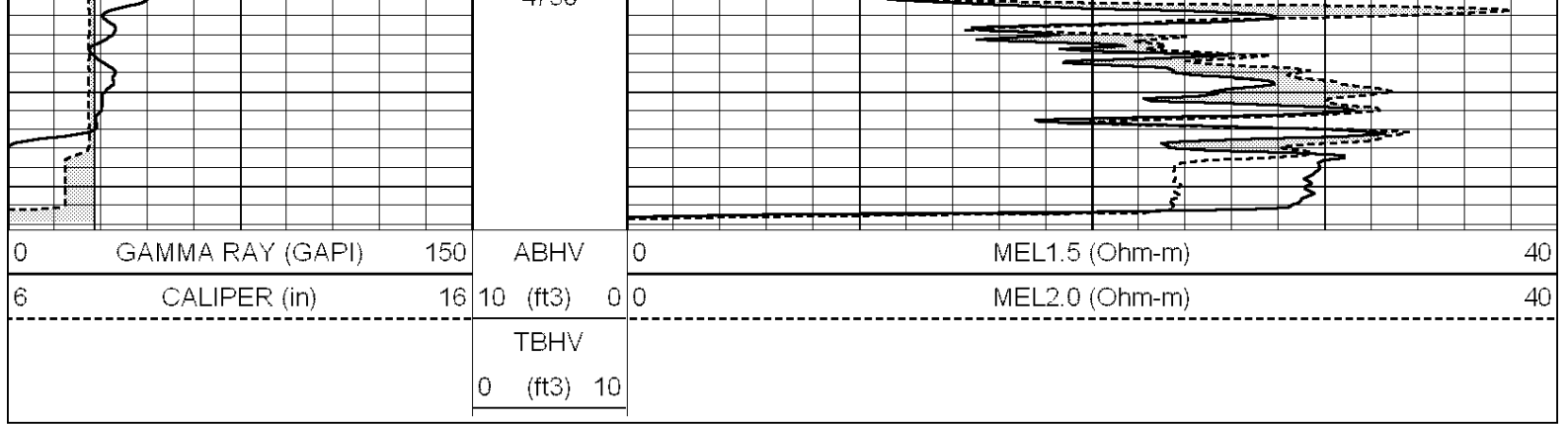
SUPERIOR
Hays,
Kansas

REPEAT SECTION

Database File: 006039pe.db
 Dataset Pathname: pass4.1
 Presentation Format: _micro
 Dataset Creation: Tue Nov 16 17:21:51 2010 by Calc Open-Cased 090629
 Charted by: Depth in Feet scaled 1:240

0	GAMMA RAY (GAPI)	150	ABHV	0	MEL1.5 (Ohm-m)	40
6	CALIPER (in)	16	10 (ft3)	0	MEL2.0 (Ohm-m)	40
			TBHV			
			0 (ft3)	10		





Calibration Report

Database File: 006039pe.db
 Dataset Pathname: pass5.3
 Dataset Creation: Tue Nov 16 18:08:44 2010

MICRO Calibration Report

Serial Number:	MICRO3	
Tool Model:	PROBE	
Performed:	Wed Oct 20 22:08:56 2010	
Caliper Calibration:	Gain=3.841	Offset=-6.219
	Low Cal	High Cal
References	8.000	14.000
Readings	4.333	5.895
1.5" Calibration:	Gain=291.940	Offset=-1.753
	Low Cal	High Cal
References	0.000	20.000
Readings	0.006	0.223
2" Calibration:	Gain=290.050	Offset=-3.049
	Low Cal	High Cal
References	0.000	20.000
Readings	0.009	0.177

Gamma Ray Calibration Report

Serial Number:	GR6	
Tool Model:	OPEN	
Performed:	Wed Jul 14 14:14:30 2010	
Calibrator Value:	150.0	GAPI
Background Reading:	0.0	cps
Calibrator Reading:	276.0	cps
Sensitivity:	0.5335	GAPI/cps